

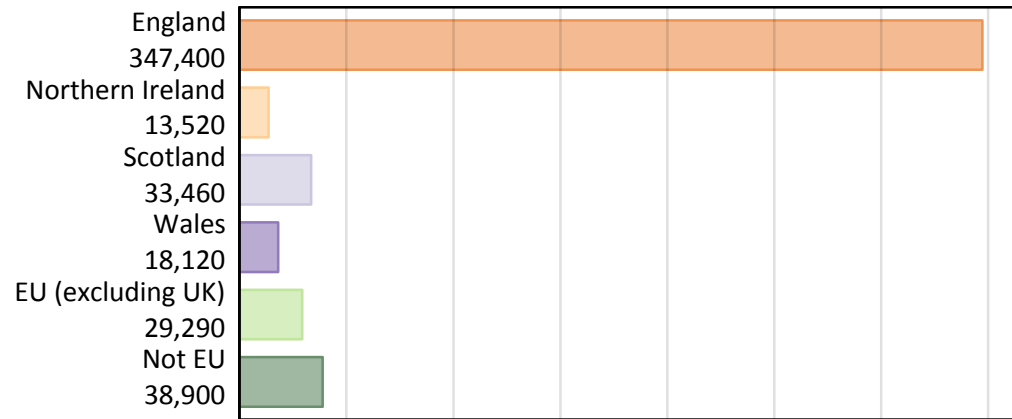
Daily Clearing Analysis: Country

Analysis at 00:05 on Thursday 29 August 2019 (14 days after A level results day)

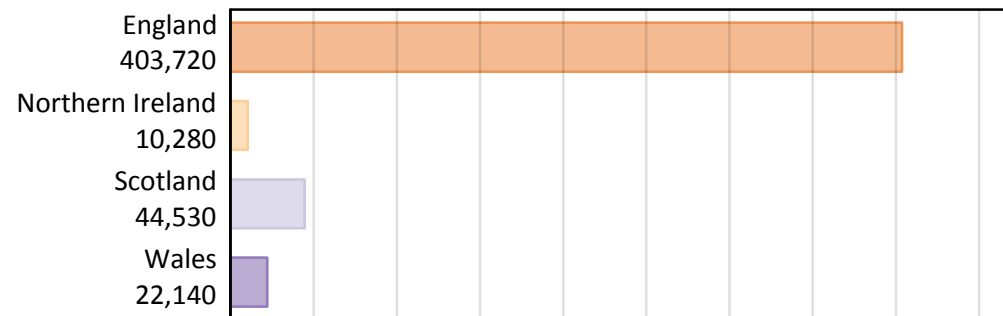
B.1 Placed applicants by country of provider and domicile, 2019 cycle

Domicile of applicant	Country of provider				
	England	Northern Ireland	Scotland	Wales	UK
England	333,050	300	4,340	9,720	347,400
Northern Ireland	3,220	9,310	870	130	13,520
Scotland	1,490	20	31,910	40	33,460
Wales	7,790	10	130	10,190	18,120
EU (excluding UK)	24,060	410	3,880	940	29,290
Not EU	34,120	230	3,400	1,140	38,900
All	403,720	10,280	44,530	22,140	480,680

B.2 Placed applicants by domicile group



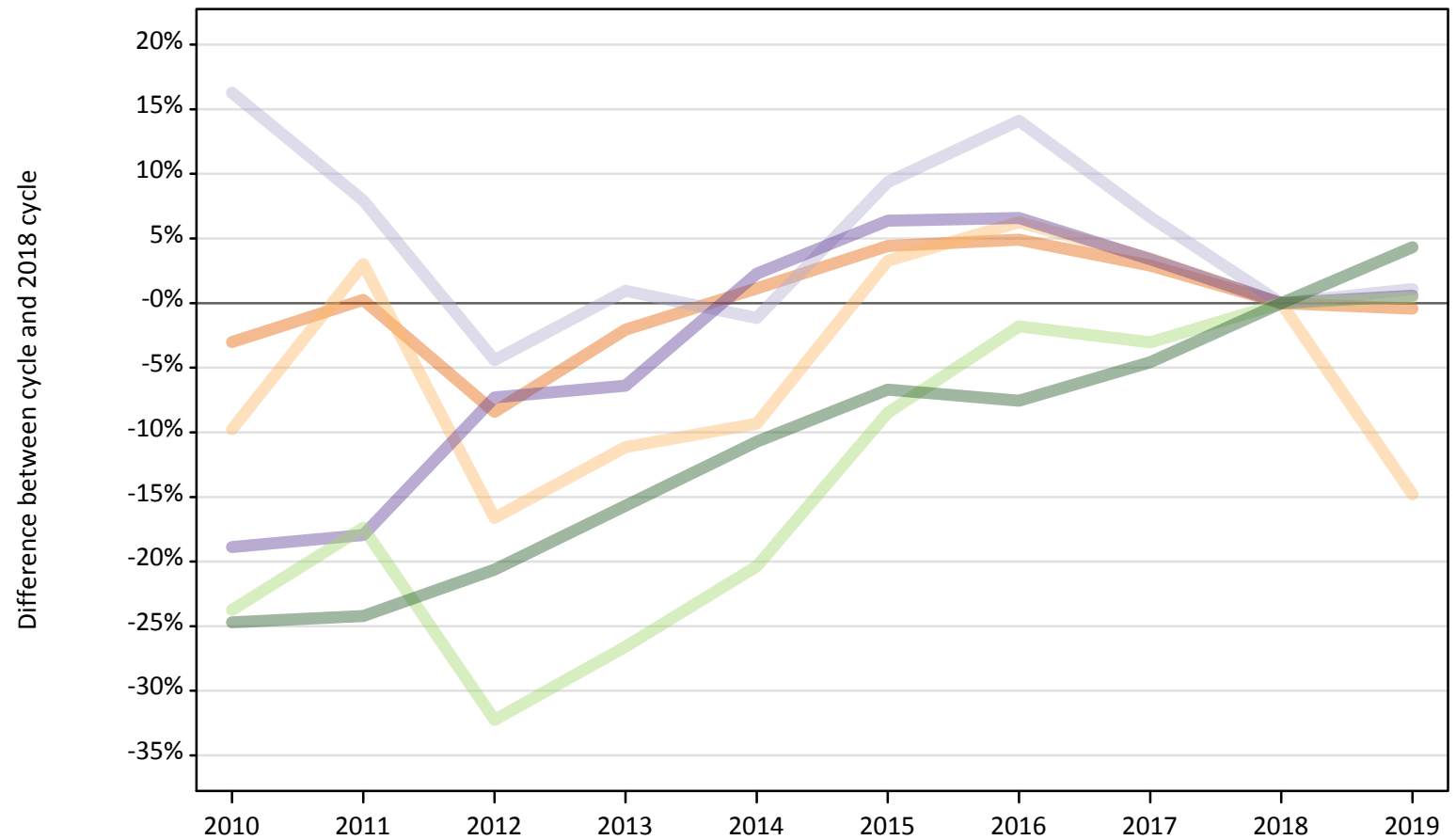
B.3 Placed applicants by country of provider



B.4 Placed applicants at 14 days after A level results day: providers in England

Selected applicant domiciles: difference between cycle and 2018 cycle (at 14 days after A level results day)

- England
- Northern Ireland
- Scotland
- Wales
- EU (excluding UK)
- Not EU



Note: The percentage change is not plotted in the above chart for groups with fewer than 30 placed applicants in any one cycle.

B.5 Placed applicants at 14 days after A level results day: providers in England

Placed applicants by domicile (at 14 days after A level results day)

Domicile of applicant	2010	2011	2012	2013	2014	2015	2016	2017	2018	2019
England	324,370	335,300	306,370	327,600	338,320	349,290	350,920	344,200	334,490	333,050
Northern Ireland	3,410	3,890	3,150	3,350	3,420	3,900	4,010	3,910	3,780	3,220
Scotland	1,710	1,590	1,410	1,490	1,460	1,610	1,680	1,570	1,470	1,490
Wales	6,280	6,360	7,180	7,250	7,920	8,240	8,260	8,010	7,750	7,790
EU (excluding UK)	18,270	19,790	16,230	17,590	19,080	21,920	23,520	23,220	23,950	24,060
Not EU	24,630	24,790	25,970	27,590	29,200	30,520	30,240	31,210	32,710	34,120

B.6 Placed applicants at 14 days after A level results day: providers in England

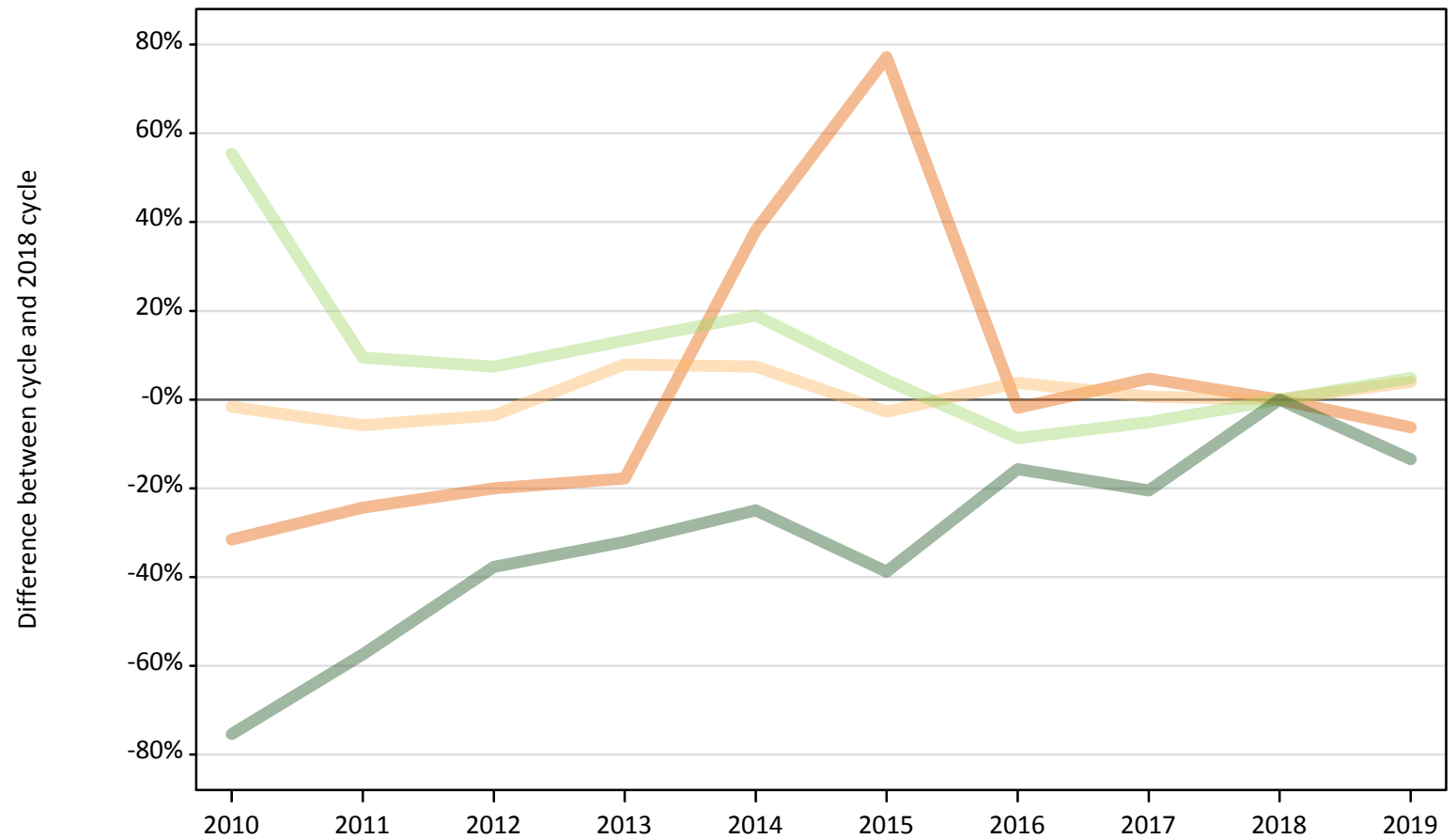
Selected applicant domiciles: difference between cycle and 2018 cycle (at 14 days after A level results day)

Domicile of applicant	2010	2011	2012	2013	2014	2015	2016	2017	2018	2019
England	-3%	0%	-8%	-2%	1%	4%	5%	3%	0%	-0%
Northern Ireland	-10%	3%	-17%	-11%	-9%	3%	6%	3%	0%	-15%
Scotland	16%	8%	-4%	1%	-1%	9%	14%	7%	0%	1%
Wales	-19%	-18%	-7%	-6%	2%	6%	7%	3%	0%	1%
EU (excluding UK)	-24%	-17%	-32%	-27%	-20%	-8%	-2%	-3%	0%	0%
Not EU	-25%	-24%	-21%	-16%	-11%	-7%	-8%	-5%	0%	4%

Note: The percentage change is not recorded in the above table for groups with fewer than 10 placed applicants in that cycle or in the 2018 cycle.

B.7 Placed applicants at 14 days after A level results day: providers in Northern Ireland
Selected applicant domiciles: difference between cycle and 2018 cycle (at 14 days after A level results day)

- England
- Northern Ireland
- Scotland
- Wales
- EU (excluding UK)
- Not EU



Note: The percentage change is not plotted in the above chart for groups with fewer than 30 placed applicants in any one cycle.

B.8 Placed applicants at 14 days after A level results day: providers in Northern Ireland

Placed applicants by domicile (at 14 days after A level results day)

Domicile of applicant	2010	2011	2012	2013	2014	2015	2016	2017	2018	2019
England	220	240	260	260	440	570	310	340	320	300
Northern Ireland	8,800	8,430	8,630	9,660	9,620	8,710	9,290	9,010	8,950	9,310
Scotland	20	20	30	10	20	20	20	30	30	20
Wales	10	10	0	10	10	10	10	10	10	10
EU (excluding UK)	610	430	420	440	460	410	360	370	390	410
Not EU	70	110	170	180	200	160	230	210	270	230

B.9 Placed applicants at 14 days after A level results day: providers in Northern Ireland

Selected applicant domiciles: difference between cycle and 2018 cycle (at 14 days after A level results day)

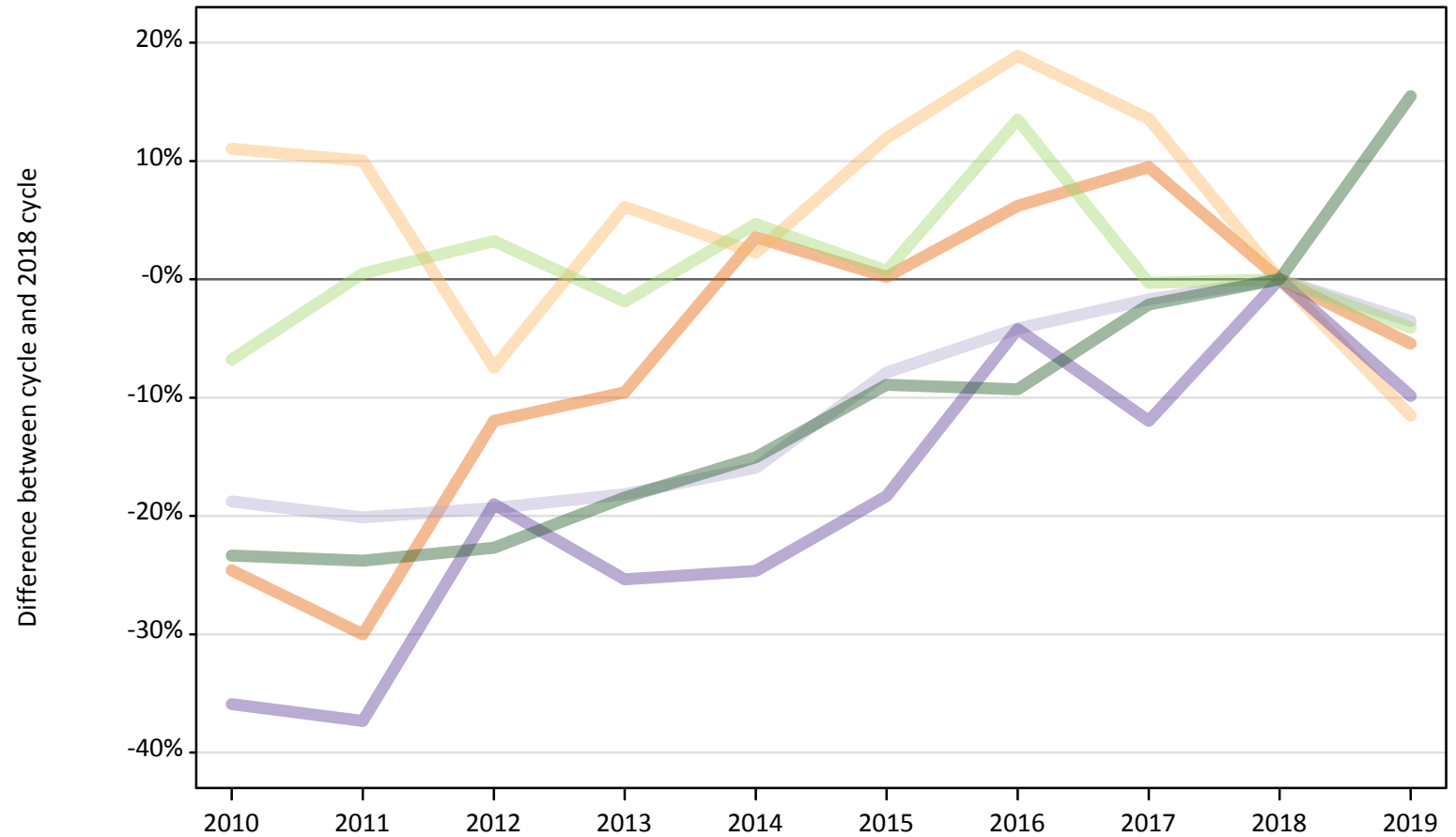
Domicile of applicant	2010	2011	2012	2013	2014	2015	2016	2017	2018	2019
England	-32%	-24%	-20%	-18%	38%	77%	-2%	5%	0%	-6%
Northern Ireland	-2%	-6%	-4%	8%	7%	-3%	4%	1%	0%	4%
Scotland	-15%	-30%	-4%	-48%	-37%	-26%	-30%	19%	0%	-30%
Wales						30%	10%	40%	0%	20%
EU (excluding UK)	55%	9%	7%	13%	19%	4%	-9%	-5%	0%	5%
Not EU	-75%	-57%	-38%	-32%	-25%	-39%	-16%	-21%	0%	-13%

Note: The percentage change is not recorded in the above table for groups with fewer than 10 placed applicants in that cycle or in the 2018 cycle.

B.10 Placed applicants at 14 days after A level results day: providers in Scotland

Selected applicant domiciles: difference between cycle and 2018 cycle (at 14 days after A level results day)

- England
- Northern Ireland
- Scotland
- Wales
- EU (excluding UK)
- Not EU



Note: The percentage change is not plotted in the above chart for groups with fewer than 30 placed applicants in any one cycle.

B.11 Placed applicants at 14 days after A level results day: providers in Scotland

Placed applicants by domicile (at 14 days after A level results day)

Domicile of applicant	2010	2011	2012	2013	2014	2015	2016	2017	2018	2019
England	3,460	3,210	4,040	4,150	4,750	4,600	4,870	5,020	4,590	4,340
Northern Ireland	1,090	1,080	910	1,040	1,000	1,100	1,160	1,110	980	870
Scotland	26,870	26,420	26,690	27,070	27,810	30,470	31,700	32,520	33,080	31,910
Wales	90	90	120	110	110	120	140	130	140	130
EU (excluding UK)	3,770	4,070	4,180	3,970	4,240	4,080	4,600	4,040	4,050	3,880
Not EU	2,260	2,250	2,280	2,400	2,500	2,680	2,670	2,880	2,950	3,400

B.12 Placed applicants at 14 days after A level results day: providers in Scotland

Selected applicant domiciles: difference between cycle and 2018 cycle (at 14 days after A level results day)

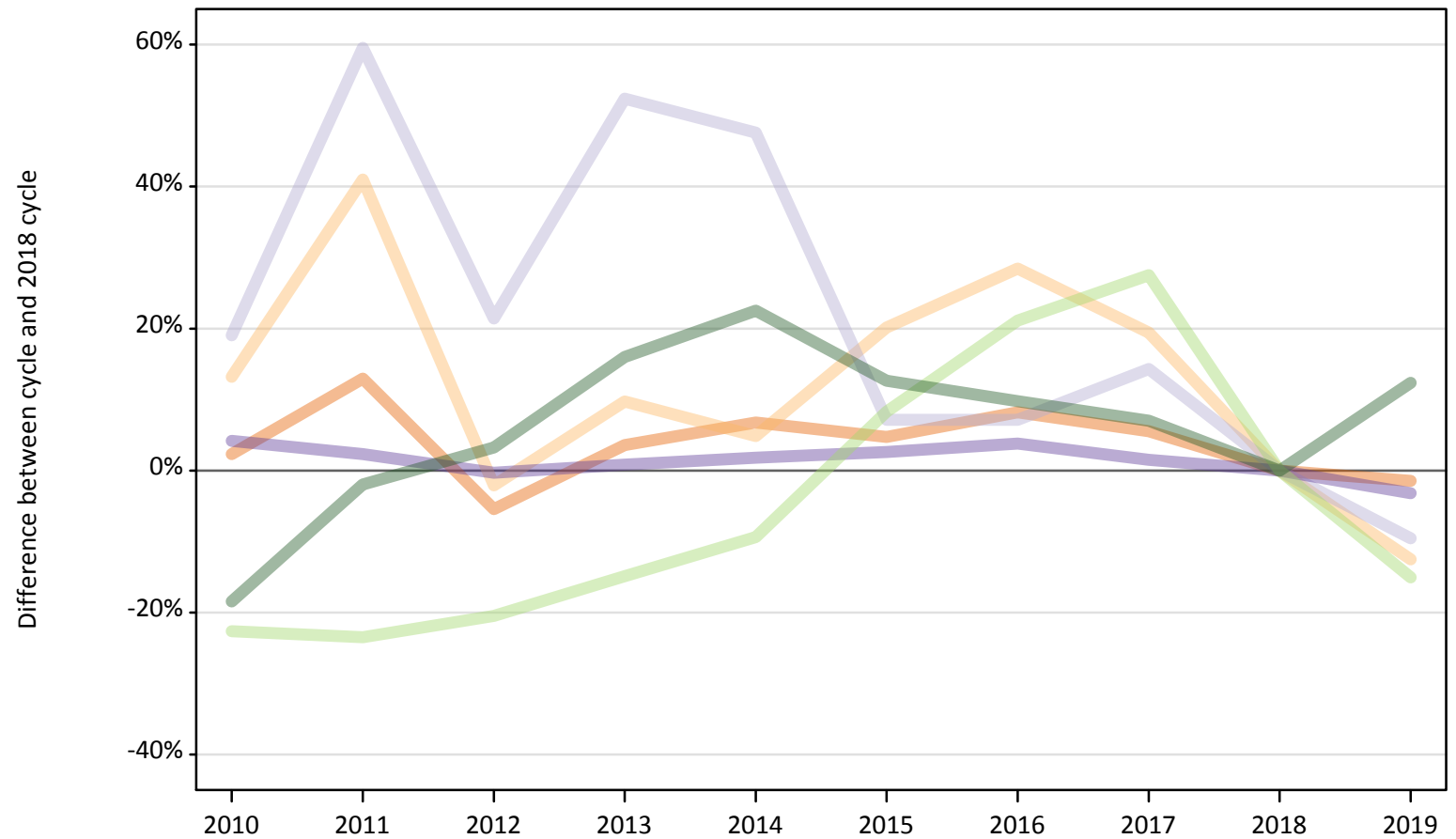
Domicile of applicant	2010	2011	2012	2013	2014	2015	2016	2017	2018	2019
England	-25%	-30%	-12%	-10%	4%	0%	6%	9%	0%	-5%
Northern Ireland	11%	10%	-7%	6%	2%	12%	19%	14%	0%	-12%
Scotland	-19%	-20%	-19%	-18%	-16%	-8%	-4%	-2%	0%	-4%
Wales	-36%	-37%	-19%	-25%	-25%	-18%	-4%	-12%	0%	-10%
EU (excluding UK)	-7%	0%	3%	-2%	5%	1%	14%	-0%	0%	-4%
Not EU	-23%	-24%	-23%	-18%	-15%	-9%	-9%	-2%	0%	15%

Note: The percentage change is not recorded in the above table for groups with fewer than 10 placed applicants in that cycle or in the 2018 cycle.

B.13 Placed applicants at 14 days after A level results day: providers in Wales

Selected applicant domiciles: difference between cycle and 2018 cycle (at 14 days after A level results day)

- England
- Northern Ireland
- Scotland
- Wales
- EU (excluding UK)
- Not EU



Note: The percentage change is not plotted in the above chart for groups with fewer than 30 placed applicants in any one cycle.

B.14 Placed applicants at 14 days after A level results day: providers in Wales

Placed applicants by domicile (at 14 days after A level results day)

Domicile of applicant	2010	2011	2012	2013	2014	2015	2016	2017	2018	2019
England	10,090	11,140	9,320	10,220	10,530	10,330	10,670	10,410	9,860	9,720
Northern Ireland	160	200	140	160	150	170	190	170	140	130
Scotland	50	70	50	60	60	50	50	50	40	40
Wales	10,960	10,760	10,490	10,610	10,710	10,790	10,920	10,680	10,520	10,190
EU (excluding UK)	860	850	880	940	1,000	1,200	1,340	1,410	1,110	940
Not EU	830	990	1,050	1,180	1,240	1,140	1,110	1,080	1,010	1,140

B.15 Placed applicants at 14 days after A level results day: providers in Wales

Selected applicant domiciles: difference between cycle and 2018 cycle (at 14 days after A level results day)

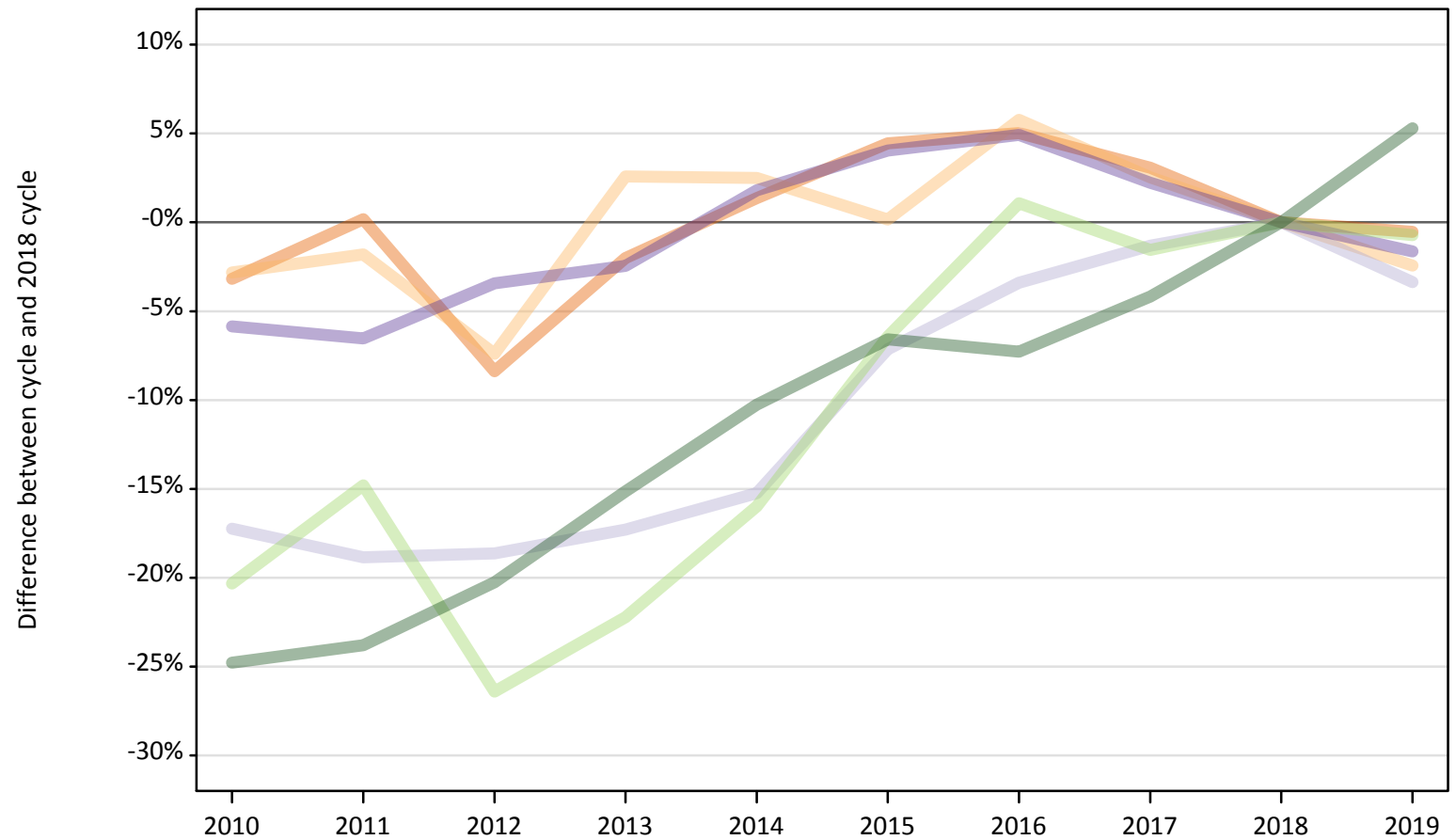
Domicile of applicant	2010	2011	2012	2013	2014	2015	2016	2017	2018	2019
England	2%	13%	-5%	4%	7%	5%	8%	6%	0%	-1%
Northern Ireland	13%	41%	-2%	10%	5%	20%	28%	19%	0%	-13%
Scotland	19%	60%	21%	52%	48%	7%	7%	14%	0%	-10%
Wales	4%	2%	-0%	1%	2%	3%	4%	2%	0%	-3%
EU (excluding UK)	-23%	-23%	-20%	-15%	-9%	8%	21%	28%	0%	-15%
Not EU	-18%	-2%	3%	16%	23%	13%	10%	7%	0%	12%

Note: The percentage change is not recorded in the above table for groups with fewer than 10 placed applicants in that cycle or in the 2018 cycle.

B.16 Placed applicants at 14 days after A level results day: providers in the UK

Selected applicant domiciles: difference between cycle and 2018 cycle (at 14 days after A level results day)

- England
- Northern Ireland
- Scotland
- Wales
- EU (excluding UK)
- Not EU



Note: The percentage change is not plotted in the above chart for groups with fewer than 30 placed applicants in any one cycle.

B.17 Placed applicants at 14 days after A level results day: providers in the UK

Placed applicants by domicile (at 14 days after A level results day)

Domicile of applicant	2010	2011	2012	2013	2014	2015	2016	2017	2018	2019
England	338,140	349,890	319,990	342,220	354,040	364,780	366,780	359,970	349,260	347,400
Northern Ireland	13,460	13,600	12,830	14,210	14,200	13,870	14,650	14,200	13,850	13,520
Scotland	28,660	28,100	28,170	28,640	29,340	32,150	33,450	34,170	34,620	33,460
Wales	17,340	17,220	17,790	17,970	18,750	19,160	19,320	18,830	18,420	18,120
EU (excluding UK)	23,500	25,130	21,710	22,940	24,780	27,610	29,820	29,040	29,500	29,290
Not EU	27,780	28,150	29,460	31,350	33,150	34,510	34,250	35,390	36,940	38,900

B.18 Placed applicants at 14 days after A level results day: providers in the UK

Selected applicant domiciles: difference between cycle and 2018 cycle (at 14 days after A level results day)

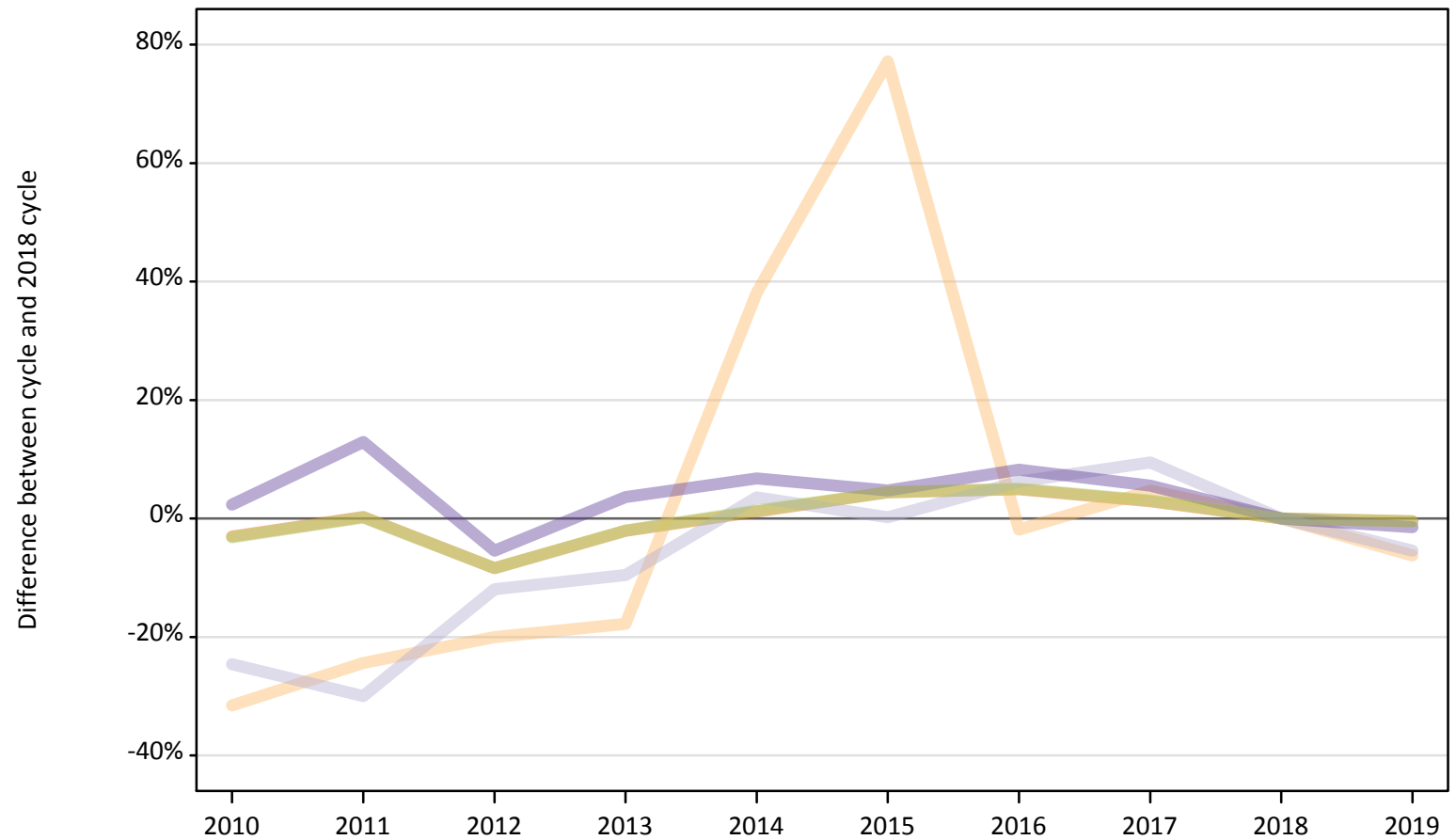
Domicile of applicant	2010	2011	2012	2013	2014	2015	2016	2017	2018	2019
England	-3%	0%	-8%	-2%	1%	4%	5%	3%	0%	-1%
Northern Ireland	-3%	-2%	-7%	3%	2%	0%	6%	3%	0%	-2%
Scotland	-17%	-19%	-19%	-17%	-15%	-7%	-3%	-1%	0%	-3%
Wales	-6%	-7%	-3%	-2%	2%	4%	5%	2%	0%	-2%
EU (excluding UK)	-20%	-15%	-26%	-22%	-16%	-6%	1%	-2%	0%	-1%
Not EU	-25%	-24%	-20%	-15%	-10%	-7%	-7%	-4%	0%	5%

Note: The percentage change is not recorded in the above table for groups with fewer than 10 placed applicants in that cycle or in the 2018 cycle.

B.19 Placed applicants at 14 days after A level results day: domiciled in England

Selected provider countries: difference between cycle and 2018 cycle (at 14 days after A level results day)

- England
- Northern Ireland
- Scotland
- Wales
- UK



Note: The percentage change is not plotted in the above chart for groups with fewer than 30 placed applicants in any one cycle.

B.20 Placed applicants at 14 days after A level results day: domiciled in England

Placed applicants by provider country (at 14 days after A level results day)

Country of provider	2010	2011	2012	2013	2014	2015	2016	2017	2018	2019
England	324,370	335,300	306,370	327,600	338,320	349,290	350,920	344,200	334,490	333,050
Northern Ireland	220	240	260	260	440	570	310	340	320	300
Scotland	3,460	3,210	4,040	4,150	4,750	4,600	4,870	5,020	4,590	4,340
Wales	10,090	11,140	9,320	10,220	10,530	10,330	10,670	10,410	9,860	9,720
UK	338,140	349,890	319,990	342,220	354,040	364,780	366,780	359,970	349,260	347,400

B.21 Placed applicants at 14 days after A level results day: domiciled in England

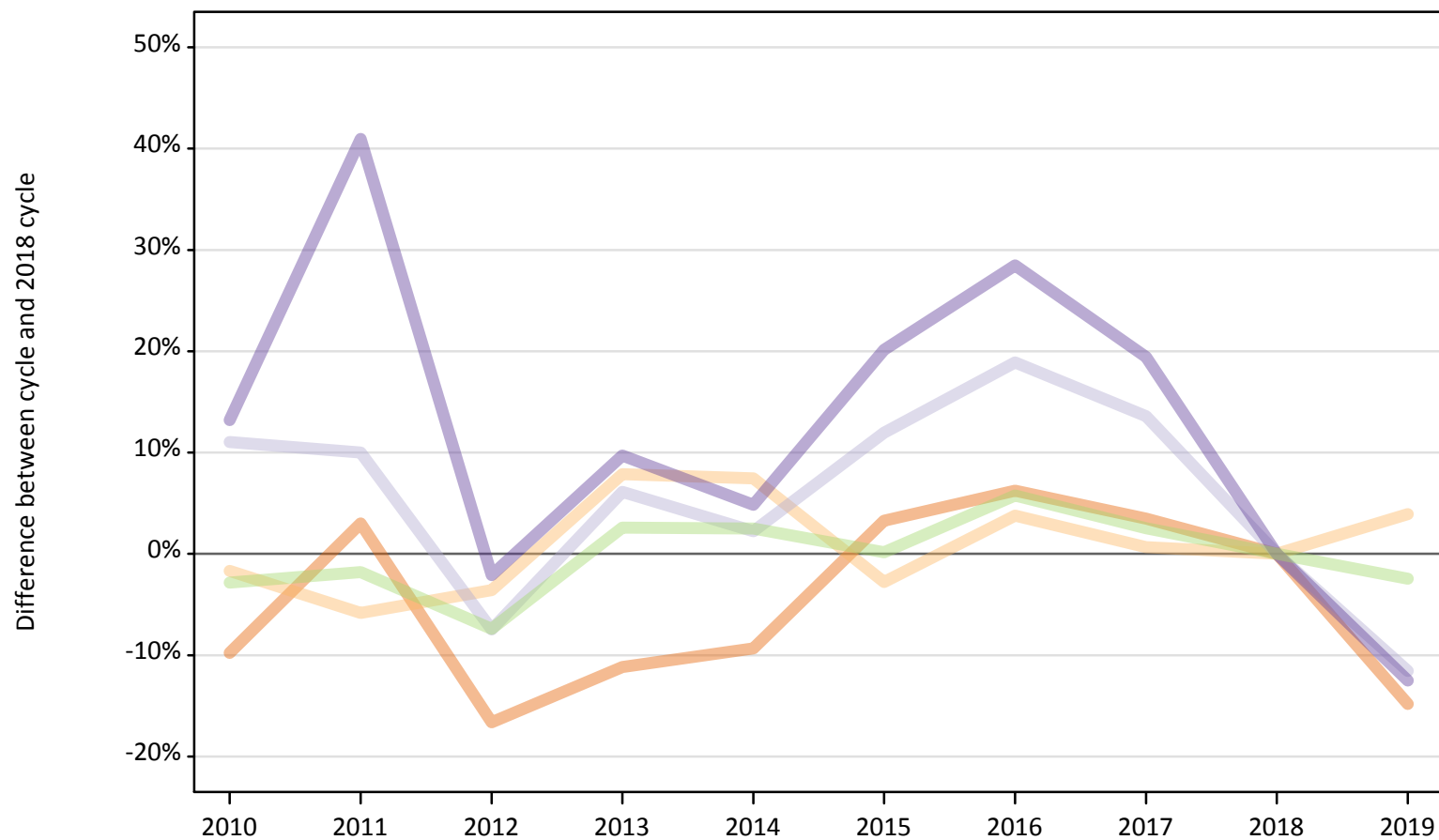
Selected provider countries: difference between cycle and 2018 cycle (at 14 days after A level results day)

Country of provider	2010	2011	2012	2013	2014	2015	2016	2017	2018	2019
England	-3%	0%	-8%	-2%	1%	4%	5%	3%	0%	-0%
Northern Ireland	-32%	-24%	-20%	-18%	38%	77%	-2%	5%	0%	-6%
Scotland	-25%	-30%	-12%	-10%	4%	0%	6%	9%	0%	-5%
Wales	2%	13%	-5%	4%	7%	5%	8%	6%	0%	-1%
UK	-3%	0%	-8%	-2%	1%	4%	5%	3%	0%	-1%

Note: The percentage change is not recorded in the above table for groups with fewer than 10 placed applicants in that cycle or in the 2018 cycle.

B.22 Placed applicants at 14 days after A level results day: domiciled in Northern Ireland
Selected provider countries: difference between cycle and 2018 cycle (at 14 days after A level results day)

- England
- Northern Ireland
- Scotland
- Wales
- UK



Note: The percentage change is not plotted in the above chart for groups with fewer than 30 placed applicants in any one cycle.

B.23 Placed applicants at 14 days after A level results day: domiciled in Northern Ireland

Placed applicants by provider country (at 14 days after A level results day)

Country of provider	2010	2011	2012	2013	2014	2015	2016	2017	2018	2019
England	3,410	3,890	3,150	3,350	3,420	3,900	4,010	3,910	3,780	3,220
Northern Ireland	8,800	8,430	8,630	9,660	9,620	8,710	9,290	9,010	8,950	9,310
Scotland	1,090	1,080	910	1,040	1,000	1,100	1,160	1,110	980	870
Wales	160	200	140	160	150	170	190	170	140	130
UK	13,460	13,600	12,830	14,210	14,200	13,870	14,650	14,200	13,850	13,520

B.24 Placed applicants at 14 days after A level results day: domiciled in Northern Ireland

Selected provider countries: difference between cycle and 2018 cycle (at 14 days after A level results day)

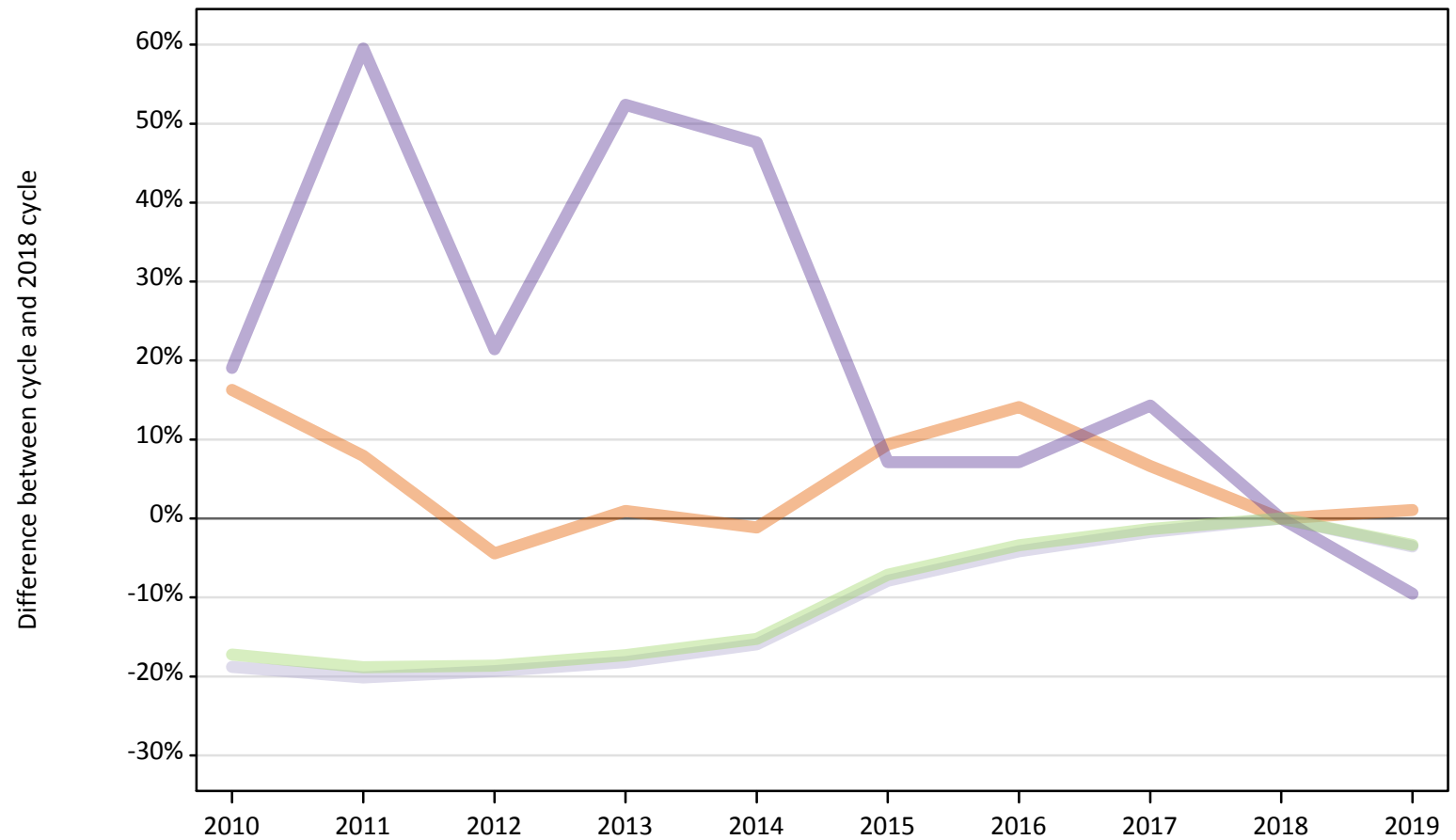
Country of provider	2010	2011	2012	2013	2014	2015	2016	2017	2018	2019
England	-10%	3%	-17%	-11%	-9%	3%	6%	3%	0%	-15%
Northern Ireland	-2%	-6%	-4%	8%	7%	-3%	4%	1%	0%	4%
Scotland	11%	10%	-7%	6%	2%	12%	19%	14%	0%	-12%
Wales	13%	41%	-2%	10%	5%	20%	28%	19%	0%	-13%
UK	-3%	-2%	-7%	3%	2%	0%	6%	3%	0%	-2%

Note: The percentage change is not recorded in the above table for groups with fewer than 10 placed applicants in that cycle or in the 2018 cycle.

B.25 Placed applicants at 14 days after A level results day: domiciled in Scotland

Selected provider countries: difference between cycle and 2018 cycle (at 14 days after A level results day)

- England
- Northern Ireland
- Scotland
- Wales
- UK



Note: The percentage change is not plotted in the above chart for groups with fewer than 30 placed applicants in any one cycle.

B.26 Placed applicants at 14 days after A level results day: domiciled in Scotland

Placed applicants by provider country (at 14 days after A level results day)

Country of provider	2010	2011	2012	2013	2014	2015	2016	2017	2018	2019
England	1,710	1,590	1,410	1,490	1,460	1,610	1,680	1,570	1,470	1,490
Northern Ireland	20	20	30	10	20	20	20	30	30	20
Scotland	26,870	26,420	26,690	27,070	27,810	30,470	31,700	32,520	33,080	31,910
Wales	50	70	50	60	60	50	50	50	40	40
UK	28,660	28,100	28,170	28,640	29,340	32,150	33,450	34,170	34,620	33,460

B.27 Placed applicants at 14 days after A level results day: domiciled in Scotland

Selected provider countries: difference between cycle and 2018 cycle (at 14 days after A level results day)

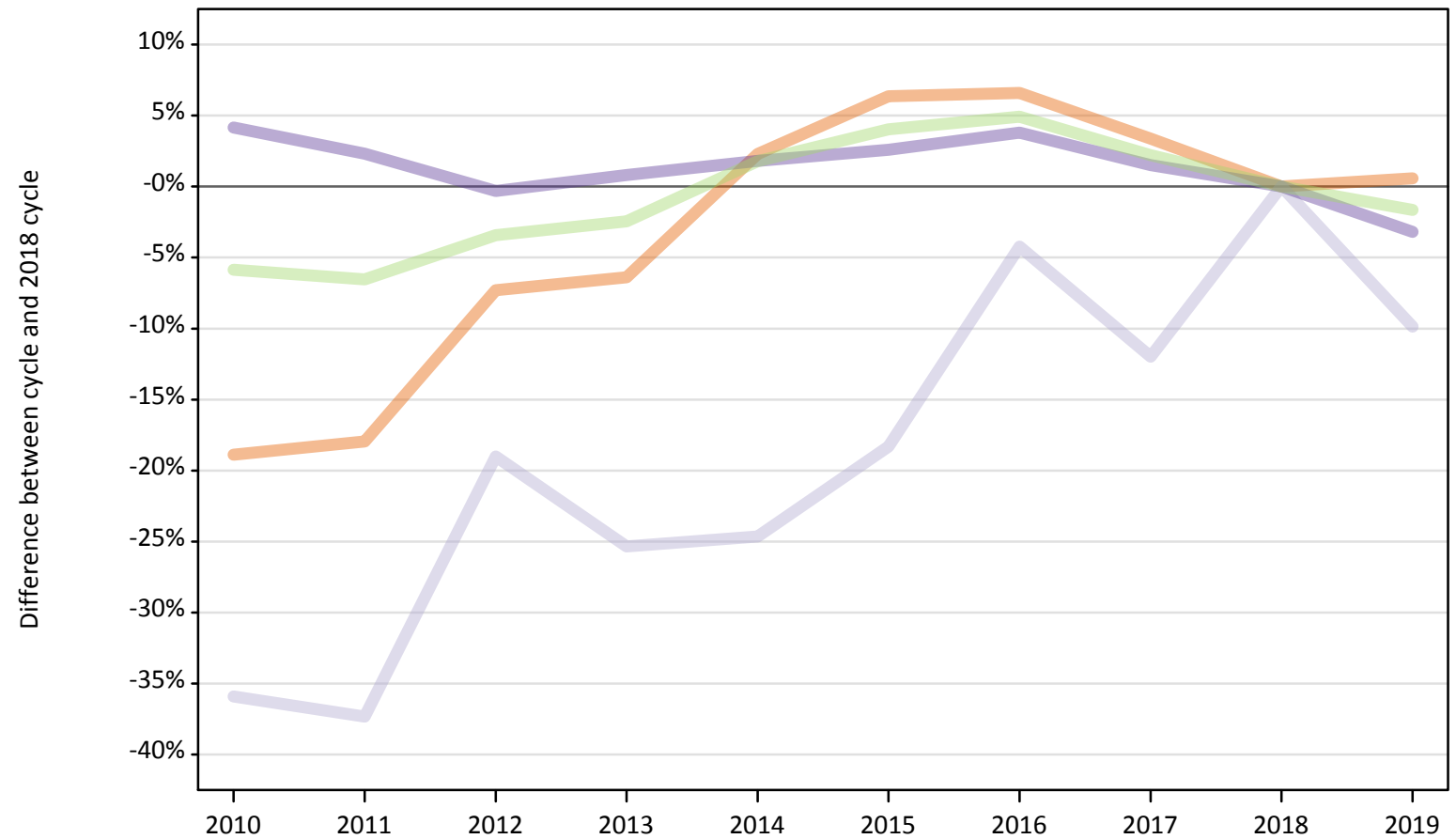
Country of provider	2010	2011	2012	2013	2014	2015	2016	2017	2018	2019
England	16%	8%	-4%	1%	-1%	9%	14%	7%	0%	1%
Northern Ireland	-15%	-30%	-4%	-48%	-37%	-26%	-30%	19%	0%	-30%
Scotland	-19%	-20%	-19%	-18%	-16%	-8%	-4%	-2%	0%	-4%
Wales	19%	60%	21%	52%	48%	7%	7%	14%	0%	-10%
UK	-17%	-19%	-19%	-17%	-15%	-7%	-3%	-1%	0%	-3%

Note: The percentage change is not recorded in the above table for groups with fewer than 10 placed applicants in that cycle or in the 2018 cycle.

B.28 Placed applicants at 14 days after A level results day: domiciled in Wales

Selected provider countries: difference between cycle and 2018 cycle (at 14 days after A level results day)

- England
- Northern Ireland
- Scotland
- Wales
- UK



Note: The percentage change is not plotted in the above chart for groups with fewer than 30 placed applicants in any one cycle.

B.29 Placed applicants at 14 days after A level results day: domiciled in Wales

Placed applicants by provider country (at 14 days after A level results day)

Country of provider	2010	2011	2012	2013	2014	2015	2016	2017	2018	2019
England	6,280	6,360	7,180	7,250	7,920	8,240	8,260	8,010	7,750	7,790
Northern Ireland	10	10	0	10	10	10	10	10	10	10
Scotland	90	90	120	110	110	120	140	130	140	130
Wales	10,960	10,760	10,490	10,610	10,710	10,790	10,920	10,680	10,520	10,190
UK	17,340	17,220	17,790	17,970	18,750	19,160	19,320	18,830	18,420	18,120

B.30 Placed applicants at 14 days after A level results day: domiciled in Wales

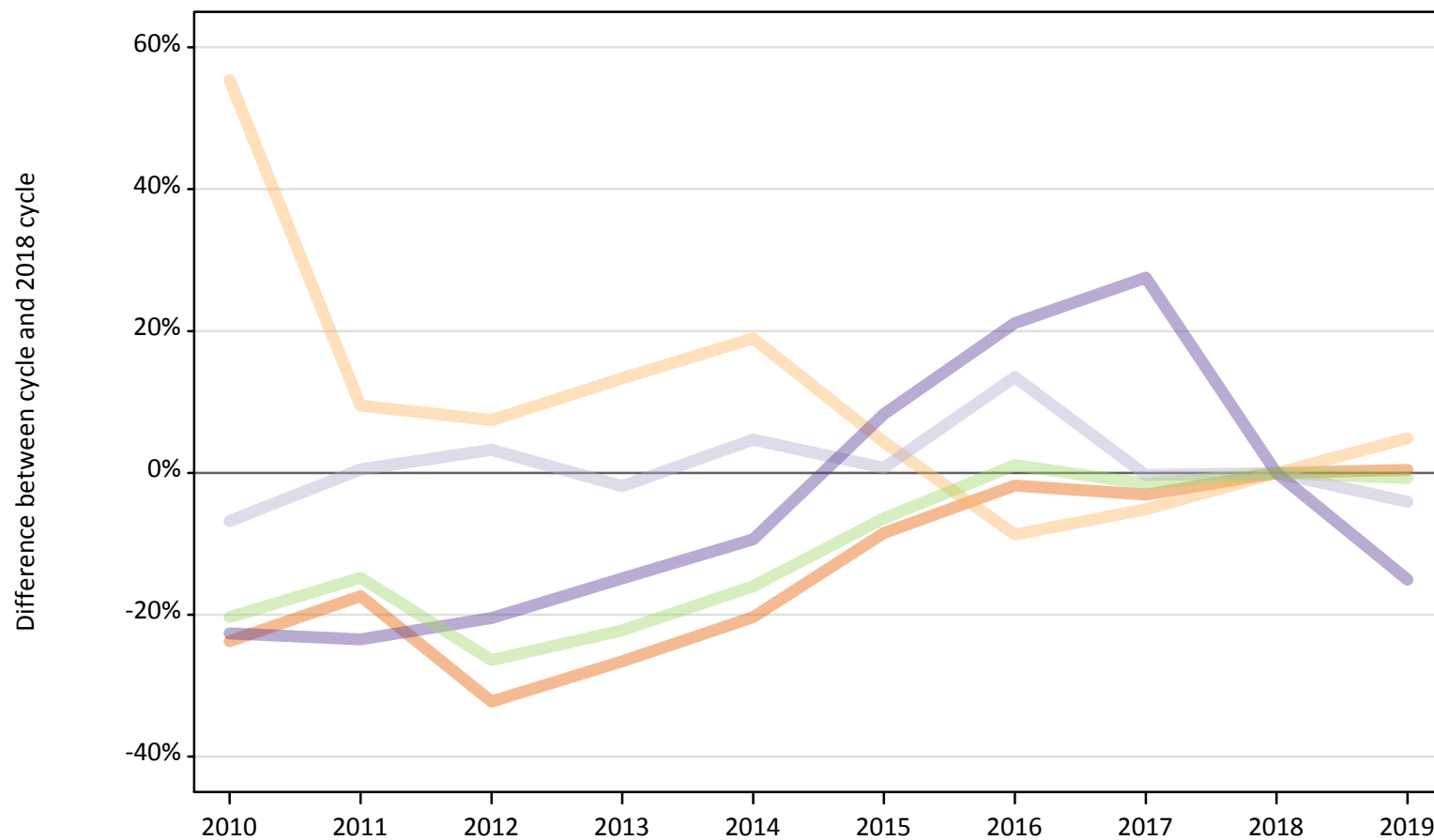
Selected provider countries: difference between cycle and 2018 cycle (at 14 days after A level results day)

Country of provider	2010	2011	2012	2013	2014	2015	2016	2017	2018	2019
England	-19%	-18%	-7%	-6%	2%	6%	7%	3%	0%	1%
Northern Ireland						30%	10%	40%	0%	20%
Scotland	-36%	-37%	-19%	-25%	-25%	-18%	-4%	-12%	0%	-10%
Wales	4%	2%	-0%	1%	2%	3%	4%	2%	0%	-3%
UK	-6%	-7%	-3%	-2%	2%	4%	5%	2%	0%	-2%

Note: The percentage change is not recorded in the above table for groups with fewer than 10 placed applicants in that cycle or in the 2018 cycle.

B.31 Placed applicants at 14 days after A level results day: domiciled in EU (excluding UK)
Selected provider countries: difference between cycle and 2018 cycle (at 14 days after A level results day)

- England
- Northern Ireland
- Scotland
- Wales
- UK



Note: The percentage change is not plotted in the above chart for groups with fewer than 30 placed applicants in any one cycle.

B.32 Placed applicants at 14 days after A level results day: domiciled in EU (excluding UK)

Placed applicants by provider country (at 14 days after A level results day)

Country of provider	2010	2011	2012	2013	2014	2015	2016	2017	2018	2019
England	18,270	19,790	16,230	17,590	19,080	21,920	23,520	23,220	23,950	24,060
Northern Ireland	610	430	420	440	460	410	360	370	390	410
Scotland	3,770	4,070	4,180	3,970	4,240	4,080	4,600	4,040	4,050	3,880
Wales	860	850	880	940	1,000	1,200	1,340	1,410	1,110	940
UK	23,500	25,130	21,710	22,940	24,780	27,610	29,820	29,040	29,500	29,290

B.33 Placed applicants at 14 days after A level results day: domiciled in EU (excluding UK)

Selected provider countries: difference between cycle and 2018 cycle (at 14 days after A level results day)

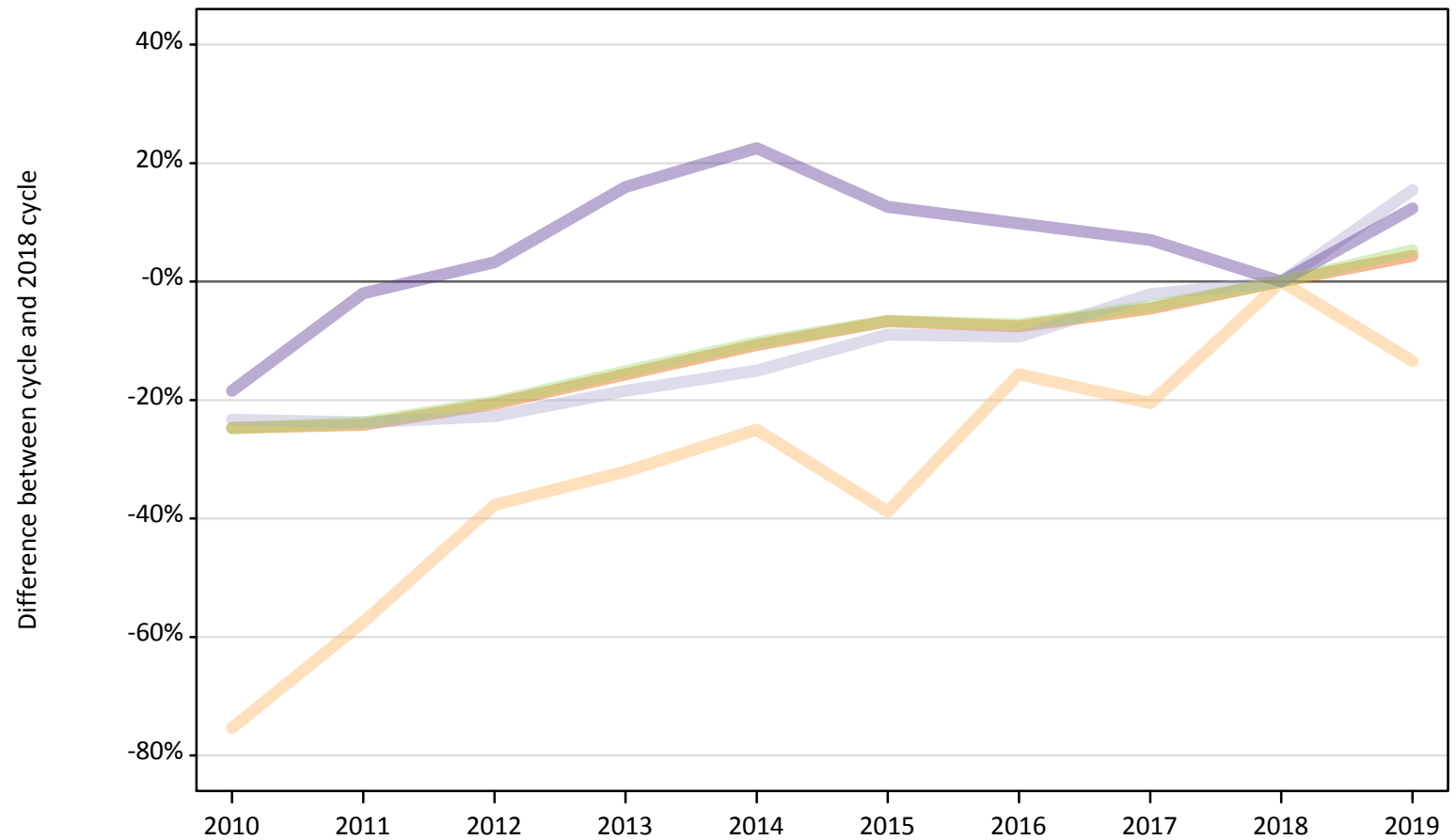
Country of provider	2010	2011	2012	2013	2014	2015	2016	2017	2018	2019
England	-24%	-17%	-32%	-27%	-20%	-8%	-2%	-3%	0%	0%
Northern Ireland	55%	9%	7%	13%	19%	4%	-9%	-5%	0%	5%
Scotland	-7%	0%	3%	-2%	5%	1%	14%	-0%	0%	-4%
Wales	-23%	-23%	-20%	-15%	-9%	8%	21%	28%	0%	-15%
UK	-20%	-15%	-26%	-22%	-16%	-6%	1%	-2%	0%	-1%

Note: The percentage change is not recorded in the above table for groups with fewer than 10 placed applicants in that cycle or in the 2018 cycle.

B.34 Placed applicants at 14 days after A level results day: domiciled in Not EU

Selected provider countries: difference between cycle and 2018 cycle (at 14 days after A level results day)

- England
- Northern Ireland
- Scotland
- Wales
- UK



Note: The percentage change is not plotted in the above chart for groups with fewer than 30 placed applicants in any one cycle.

B.35 Placed applicants at 14 days after A level results day: domiciled in Not EU

Placed applicants by provider country (at 14 days after A level results day)

Country of provider	2010	2011	2012	2013	2014	2015	2016	2017	2018	2019
England	24,630	24,790	25,970	27,590	29,200	30,520	30,240	31,210	32,710	34,120
Northern Ireland	70	110	170	180	200	160	230	210	270	230
Scotland	2,260	2,250	2,280	2,400	2,500	2,680	2,670	2,880	2,950	3,400
Wales	830	990	1,050	1,180	1,240	1,140	1,110	1,080	1,010	1,140
UK	27,780	28,150	29,460	31,350	33,150	34,510	34,250	35,390	36,940	38,900

B.36 Placed applicants at 14 days after A level results day: domiciled in Not EU

Selected provider countries: difference between cycle and 2018 cycle (at 14 days after A level results day)

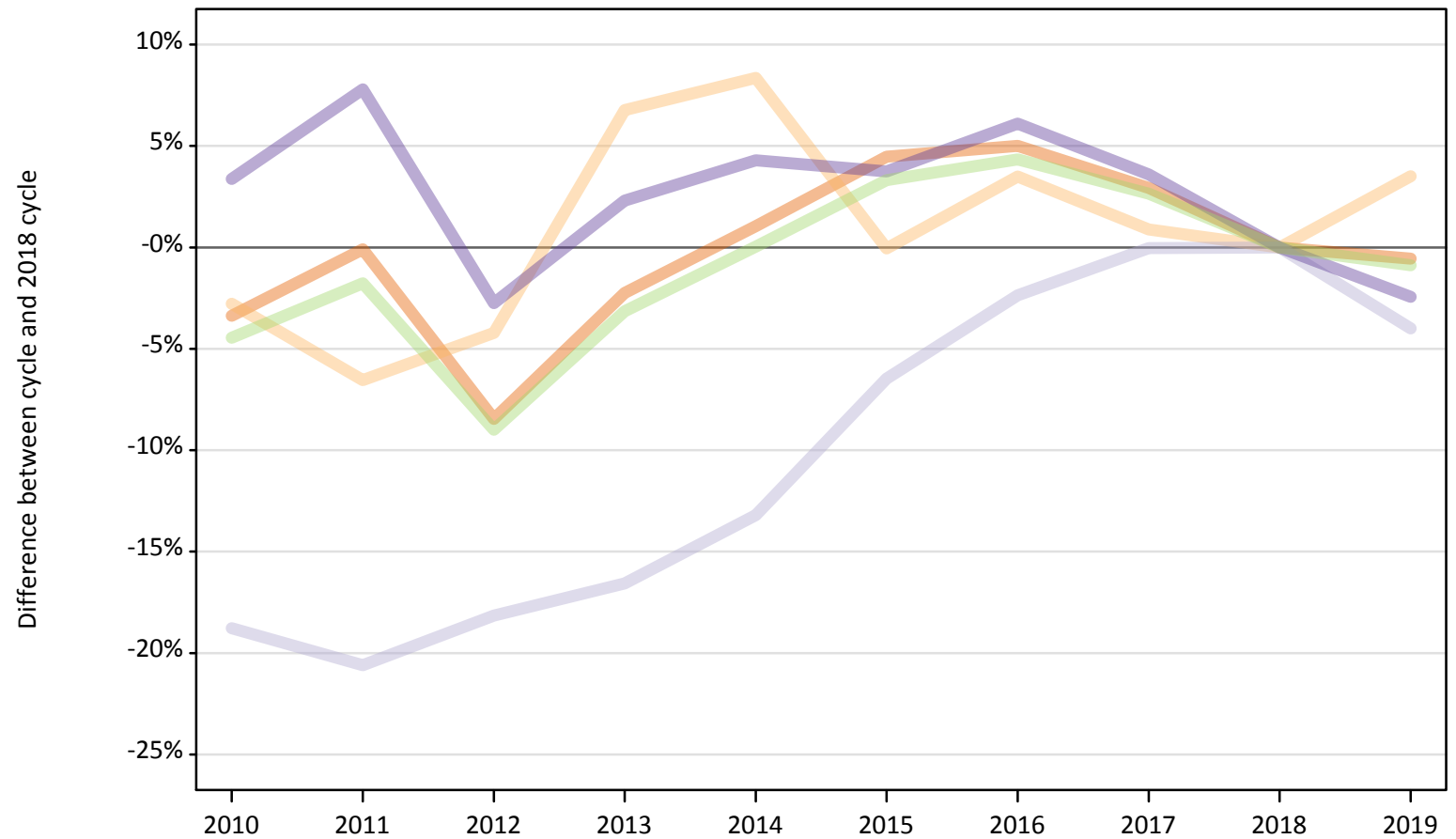
Country of provider	2010	2011	2012	2013	2014	2015	2016	2017	2018	2019
England	-25%	-24%	-21%	-16%	-11%	-7%	-8%	-5%	0%	4%
Northern Ireland	-75%	-57%	-38%	-32%	-25%	-39%	-16%	-21%	0%	-13%
Scotland	-23%	-24%	-23%	-18%	-15%	-9%	-9%	-2%	0%	15%
Wales	-18%	-2%	3%	16%	23%	13%	10%	7%	0%	12%
UK	-25%	-24%	-20%	-15%	-10%	-7%	-7%	-4%	0%	5%

Note: The percentage change is not recorded in the above table for groups with fewer than 10 placed applicants in that cycle or in the 2018 cycle.

B.37 Placed applicants at 14 days after A level results day: domiciled in UK

Selected provider countries: difference between cycle and 2018 cycle (at 14 days after A level results day)

- England
- Northern Ireland
- Scotland
- Wales
- UK



Note: The percentage change is not plotted in the above chart for groups with fewer than 30 placed applicants in any one cycle.

B.38 Placed applicants at 14 days after A level results day: domiciled in UK

Placed applicants by provider country (at 14 days after A level results day)

Country of provider	2010	2011	2012	2013	2014	2015	2016	2017	2018	2019
England	335,780	347,130	318,100	339,690	351,120	363,040	364,870	357,690	347,480	345,550
Northern Ireland	9,050	8,700	8,920	9,940	10,090	9,310	9,640	9,390	9,310	9,640
Scotland	31,510	30,800	31,750	32,370	33,670	36,280	37,870	38,780	38,790	37,240
Wales	21,260	22,170	20,000	21,040	21,450	21,340	21,820	21,310	20,570	20,070
UK	397,600	408,800	378,770	403,040	416,330	429,970	434,200	427,160	416,150	412,490

B.39 Placed applicants at 14 days after A level results day: domiciled in UK

Selected provider countries: difference between cycle and 2018 cycle (at 14 days after A level results day)

Country of provider	2010	2011	2012	2013	2014	2015	2016	2017	2018	2019
England	-3%	-0%	-8%	-2%	1%	4%	5%	3%	0%	-1%
Northern Ireland	-3%	-7%	-4%	7%	8%	-0%	3%	1%	0%	4%
Scotland	-19%	-21%	-18%	-17%	-13%	-6%	-2%	-0%	0%	-4%
Wales	3%	8%	-3%	2%	4%	4%	6%	4%	0%	-2%
UK	-4%	-2%	-9%	-3%	0%	3%	4%	3%	0%	-1%

Note: The percentage change is not recorded in the above table for groups with fewer than 10 placed applicants in that cycle or in the 2018 cycle.