

## Analysis at 00:05 on Thursday 29 August 2019 (14 days after A level results day)

### C.1 Placed applicants by country of domicile and age group, 2019 cycle (14 days after A level results day)

| Domicile of applicant | Age group    |         |        |          |             |
|-----------------------|--------------|---------|--------|----------|-------------|
|                       | 17 and under | 18      | 19     | 20 to 24 | 25 and over |
| England               | 580          | 205,550 | 65,350 | 46,550   | 29,370      |
| Northern Ireland      | 30           | 7,970   | 2,370  | 2,320    | 830         |
| Scotland              | 510          | 14,040  | 4,390  | 7,870    | 6,650       |
| Wales                 | 20           | 9,890   | 3,320  | 2,790    | 2,090       |
| UK                    | 1,140        | 237,450 | 75,430 | 59,530   | 38,940      |

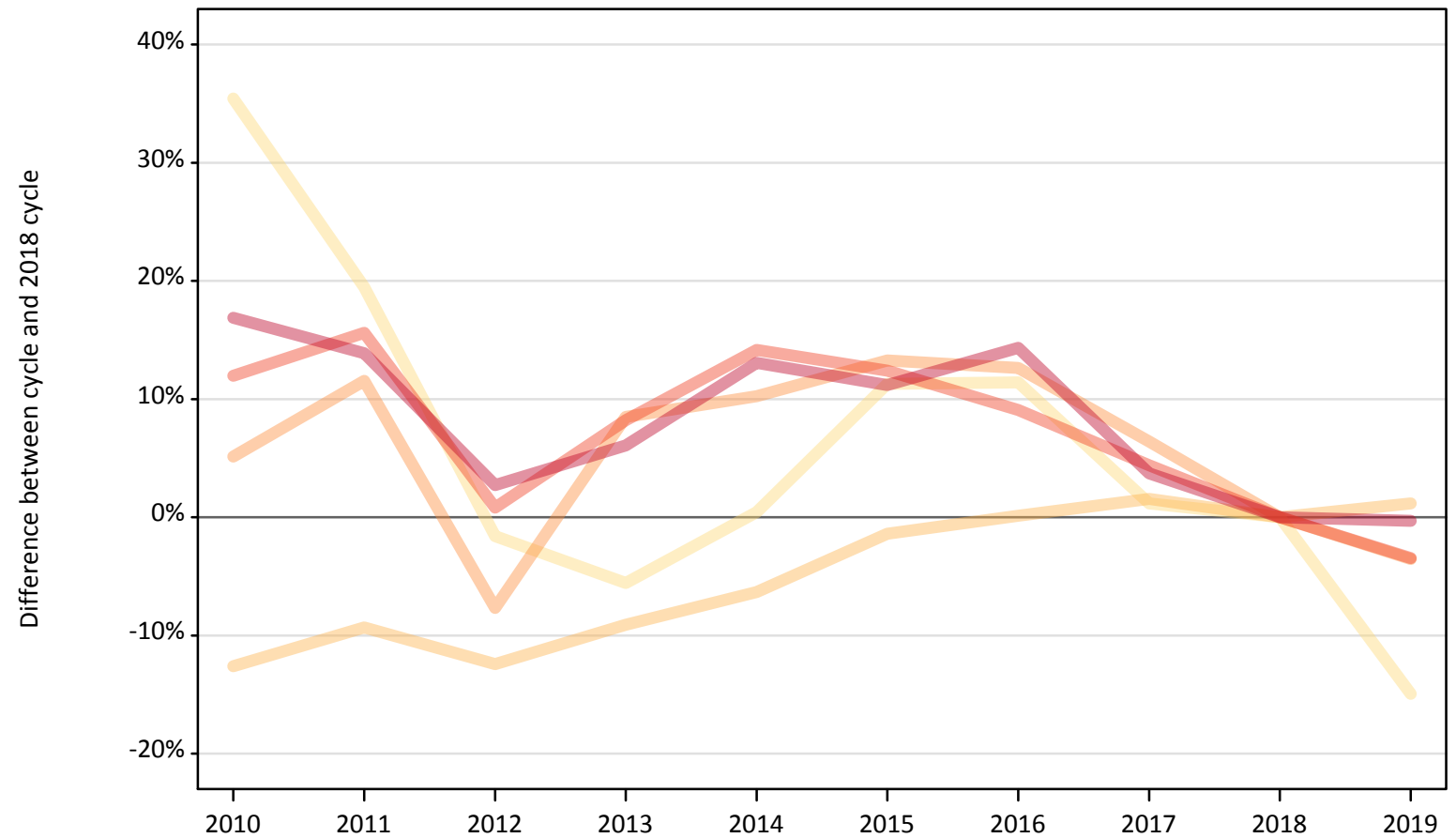
### C.2 Proportion of 18 year old population placed by country of domicile, 2019 cycle (14 days after A level results day)

| Domicile of applicant | Age group | 2019  |
|-----------------------|-----------|-------|
| England               | 18        | 34.4% |
| Northern Ireland      | 18        | 35.6% |
| Scotland              | 18        | 26.1% |
| Wales                 | 18        | 29.4% |

### C.3 Placed applicants from England by age group at 14 days after A level results day

Selected age groups: difference between cycle and 2018 cycle

- 17 and under
- 18
- 19
- 20 to 24
- 25 and over



Note: The percentage change is not plotted in the above chart for groups with fewer than 30 placed applicants in any one cycle.

#### C.4 Placed applicants from England by age group at 14 days after A level results day

All age groups

| Domicile of applicant | Age group    | 2010    | 2011    | 2012    | 2013    | 2014    | 2015    | 2016    | 2017    | 2018    | 2019    |
|-----------------------|--------------|---------|---------|---------|---------|---------|---------|---------|---------|---------|---------|
| England               | 17 and under | 930     | 820     | 670     | 650     | 690     | 760     | 760     | 690     | 680     | 580     |
|                       | 18           | 177,560 | 184,210 | 177,900 | 184,650 | 190,300 | 200,330 | 203,430 | 206,300 | 203,150 | 205,550 |
|                       | 19           | 71,240  | 75,570  | 62,560  | 73,500  | 74,700  | 76,740  | 76,320  | 72,090  | 67,760  | 65,350  |
|                       | 20 to 24     | 53,990  | 55,750  | 48,610  | 52,180  | 55,050  | 54,200  | 52,600  | 50,340  | 48,220  | 46,550  |
|                       | 25 and over  | 34,430  | 33,540  | 30,260  | 31,250  | 33,300  | 32,750  | 33,680  | 30,540  | 29,450  | 29,370  |

#### C.5 Placed applicants from England by age group at 14 days after A level results day

Selected age groups: difference between cycle and 2018 cycle

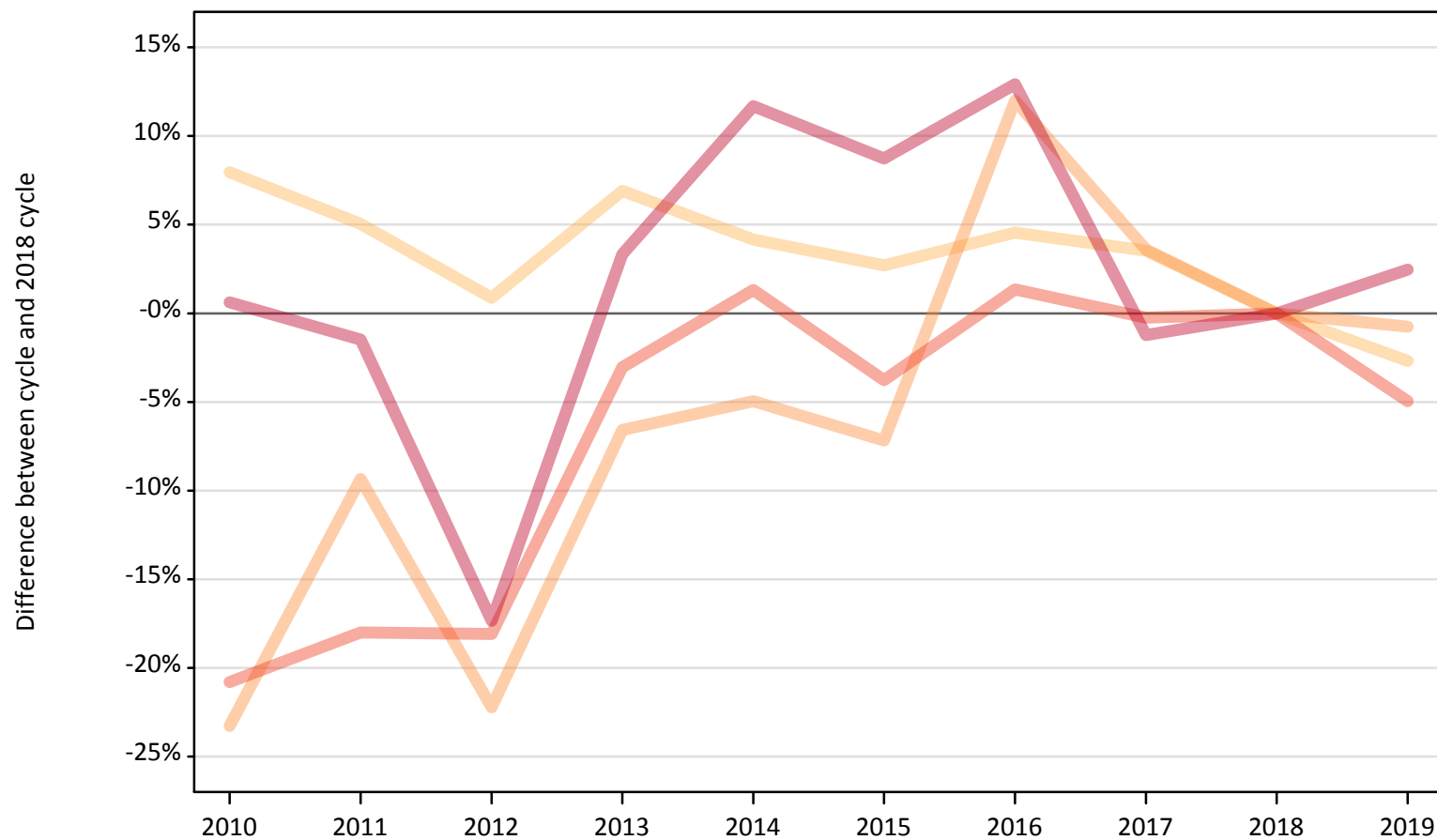
| Domicile of applicant | Age group    | 2010 | 2011 | 2012 | 2013 | 2014 | 2015 | 2016 | 2017 | 2018 | 2019 |
|-----------------------|--------------|------|------|------|------|------|------|------|------|------|------|
| England               | 17 and under | 35%  | 19%  | -2%  | -6%  | 0%   | 11%  | 11%  | 1%   | 0%   | -15% |
|                       | 18           | -13% | -9%  | -12% | -9%  | -6%  | -1%  | 0%   | 2%   | 0%   | 1%   |
|                       | 19           | 5%   | 12%  | -8%  | 8%   | 10%  | 13%  | 13%  | 6%   | 0%   | -4%  |
|                       | 20 to 24     | 12%  | 16%  | 1%   | 8%   | 14%  | 12%  | 9%   | 4%   | 0%   | -3%  |
|                       | 25 and over  | 17%  | 14%  | 3%   | 6%   | 13%  | 11%  | 14%  | 4%   | 0%   | -0%  |

Note: The percentage change is not recorded in the above table for groups with fewer than 10 placed applicants in that cycle or in the 2018 cycle.

## C.6 Placed applicants from Northern Ireland by age group at 14 days after A level results day

Selected age groups: difference between cycle and 2018 cycle

- 17 and under
- 18
- 19
- 20 to 24
- 25 and over



Note: The percentage change is not plotted in the above chart for groups with fewer than 30 placed applicants in any one cycle.

### C.7 Placed applicants from Northern Ireland by age group at 14 days after A level results day

All age groups

| Domicile of applicant | Age group    | 2010  | 2011  | 2012  | 2013  | 2014  | 2015  | 2016  | 2017  | 2018  | 2019  |
|-----------------------|--------------|-------|-------|-------|-------|-------|-------|-------|-------|-------|-------|
| Northern Ireland      | 17 and under | 40    | 40    | 40    | 20    | 20    | 20    | 30    | 20    | 30    | 30    |
|                       | 18           | 8,840 | 8,600 | 8,260 | 8,760 | 8,530 | 8,410 | 8,560 | 8,480 | 8,190 | 7,970 |
|                       | 19           | 1,830 | 2,160 | 1,860 | 2,230 | 2,270 | 2,210 | 2,670 | 2,470 | 2,390 | 2,370 |
|                       | 20 to 24     | 1,930 | 2,000 | 2,000 | 2,360 | 2,470 | 2,350 | 2,470 | 2,430 | 2,440 | 2,320 |
|                       | 25 and over  | 820   | 800   | 670   | 840   | 910   | 880   | 920   | 800   | 810   | 830   |

### C.8 Placed applicants from Northern Ireland by age group at 14 days after A level results day

Selected age groups: difference between cycle and 2018 cycle

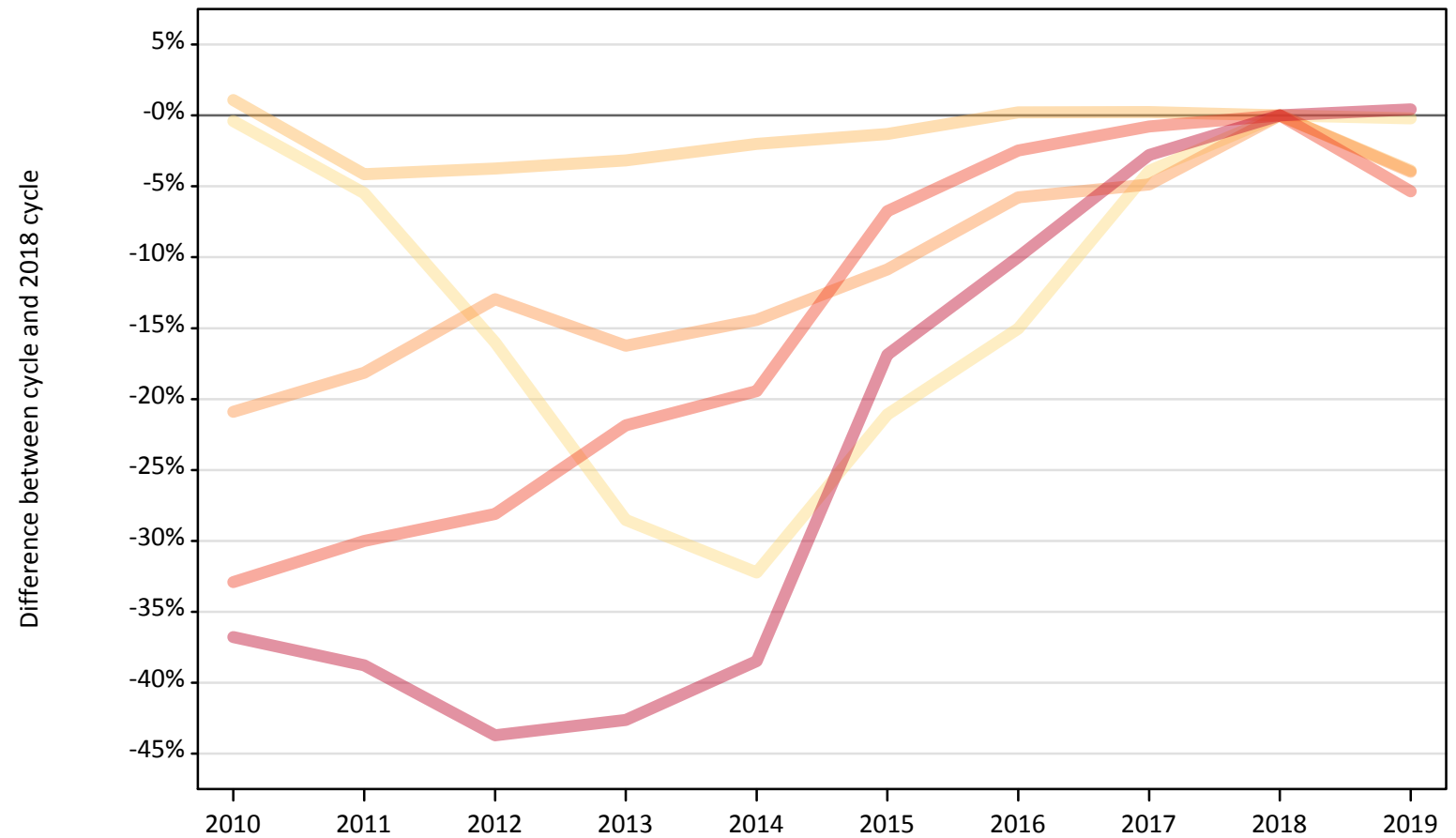
| Domicile of applicant | Age group    | 2010 | 2011 | 2012 | 2013 | 2014 | 2015 | 2016 | 2017 | 2018 | 2019 |
|-----------------------|--------------|------|------|------|------|------|------|------|------|------|------|
| Northern Ireland      | 17 and under | 50%  | 42%  | 62%  | -15% | -19% | -31% | 15%  | -31% | 0%   | 8%   |
|                       | 18           | 8%   | 5%   | 1%   | 7%   | 4%   | 3%   | 5%   | 4%   | 0%   | -3%  |
|                       | 19           | -23% | -9%  | -22% | -7%  | -5%  | -7%  | 12%  | 4%   | 0%   | -1%  |
|                       | 20 to 24     | -21% | -18% | -18% | -3%  | 1%   | -4%  | 1%   | -0%  | 0%   | -5%  |
|                       | 25 and over  | 1%   | -1%  | -17% | 3%   | 12%  | 9%   | 13%  | -1%  | 0%   | 2%   |

Note: The percentage change is not recorded in the above table for groups with fewer than 10 placed applicants in that cycle or in the 2018 cycle.

### C.9 Placed applicants from Scotland by age group at 14 days after A level results day

Selected age groups: difference between cycle and 2018 cycle

- 17 and under
- 18
- 19
- 20 to 24
- 25 and over



Note: The percentage change is not plotted in the above chart for groups with fewer than 30 placed applicants in any one cycle.

### C.10 Placed applicants from Scotland by age group at 14 days after A level results day

All age groups

| Domicile of applicant | Age group    | 2010   | 2011   | 2012   | 2013   | 2014   | 2015   | 2016   | 2017   | 2018   | 2019   |
|-----------------------|--------------|--------|--------|--------|--------|--------|--------|--------|--------|--------|--------|
| Scotland              | 17 and under | 510    | 480    | 430    | 370    | 350    | 400    | 440    | 490    | 510    | 510    |
|                       | 18           | 14,770 | 14,000 | 14,060 | 14,150 | 14,320 | 14,420 | 14,640 | 14,640 | 14,610 | 14,040 |
|                       | 19           | 3,610  | 3,740  | 3,980  | 3,830  | 3,910  | 4,070  | 4,300  | 4,350  | 4,570  | 4,390  |
|                       | 20 to 24     | 5,580  | 5,820  | 5,980  | 6,500  | 6,700  | 7,760  | 8,110  | 8,250  | 8,320  | 7,870  |
|                       | 25 and over  | 4,180  | 4,050  | 3,730  | 3,800  | 4,070  | 5,500  | 5,960  | 6,430  | 6,620  | 6,650  |

### C.11 Placed applicants from Scotland by age group at 14 days after A level results day

Selected age groups: difference between cycle and 2018 cycle

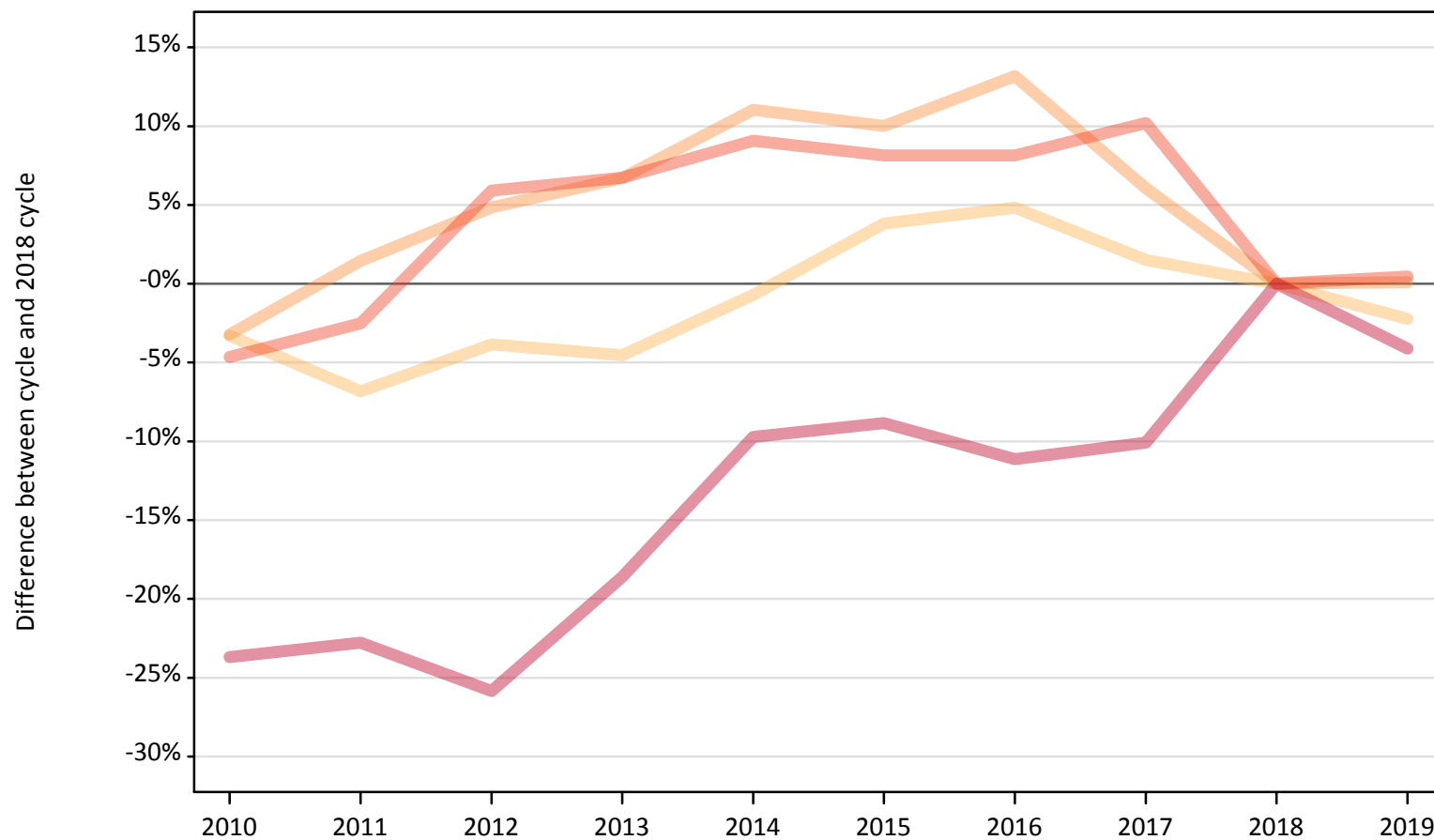
| Domicile of applicant | Age group    | 2010 | 2011 | 2012 | 2013 | 2014 | 2015 | 2016 | 2017 | 2018 | 2019 |
|-----------------------|--------------|------|------|------|------|------|------|------|------|------|------|
| Scotland              | 17 and under | -0%  | -5%  | -16% | -29% | -32% | -21% | -15% | -4%  | 0%   | -0%  |
|                       | 18           | 1%   | -4%  | -4%  | -3%  | -2%  | -1%  | 0%   | 0%   | 0%   | -4%  |
|                       | 19           | -21% | -18% | -13% | -16% | -14% | -11% | -6%  | -5%  | 0%   | -4%  |
|                       | 20 to 24     | -33% | -30% | -28% | -22% | -19% | -7%  | -2%  | -1%  | 0%   | -5%  |
|                       | 25 and over  | -37% | -39% | -44% | -43% | -38% | -17% | -10% | -3%  | 0%   | 0%   |

Note: The percentage change is not recorded in the above table for groups with fewer than 10 placed applicants in that cycle or in the 2018 cycle.

### C.12 Placed applicants from Wales by age group at 14 days after A level results day

Selected age groups: difference between cycle and 2018 cycle

- 17 and under
- 18
- 19
- 20 to 24
- 25 and over



Note: The percentage change is not plotted in the above chart for groups with fewer than 30 placed applicants in any one cycle.



### C.13 Placed applicants from Wales by age group at 14 days after A level results day

All age groups

| Domicile of applicant | Age group    | 2010  | 2011  | 2012  | 2013  | 2014   | 2015   | 2016   | 2017   | 2018   | 2019  |
|-----------------------|--------------|-------|-------|-------|-------|--------|--------|--------|--------|--------|-------|
| Wales                 | 17 and under | 30    | 30    | 20    | 30    | 20     | 20     | 20     | 20     | 30     | 20    |
|                       | 18           | 9,780 | 9,430 | 9,730 | 9,660 | 10,040 | 10,500 | 10,600 | 10,270 | 10,120 | 9,890 |
|                       | 19           | 3,210 | 3,370 | 3,480 | 3,540 | 3,680  | 3,650  | 3,760  | 3,520  | 3,320  | 3,320 |
|                       | 20 to 24     | 2,650 | 2,710 | 2,940 | 2,960 | 3,030  | 3,000  | 3,000  | 3,060  | 2,780  | 2,790 |
|                       | 25 and over  | 1,670 | 1,690 | 1,620 | 1,780 | 1,970  | 1,990  | 1,940  | 1,960  | 2,180  | 2,090 |

### C.14 Placed applicants from Wales by age group at 14 days after A level results day

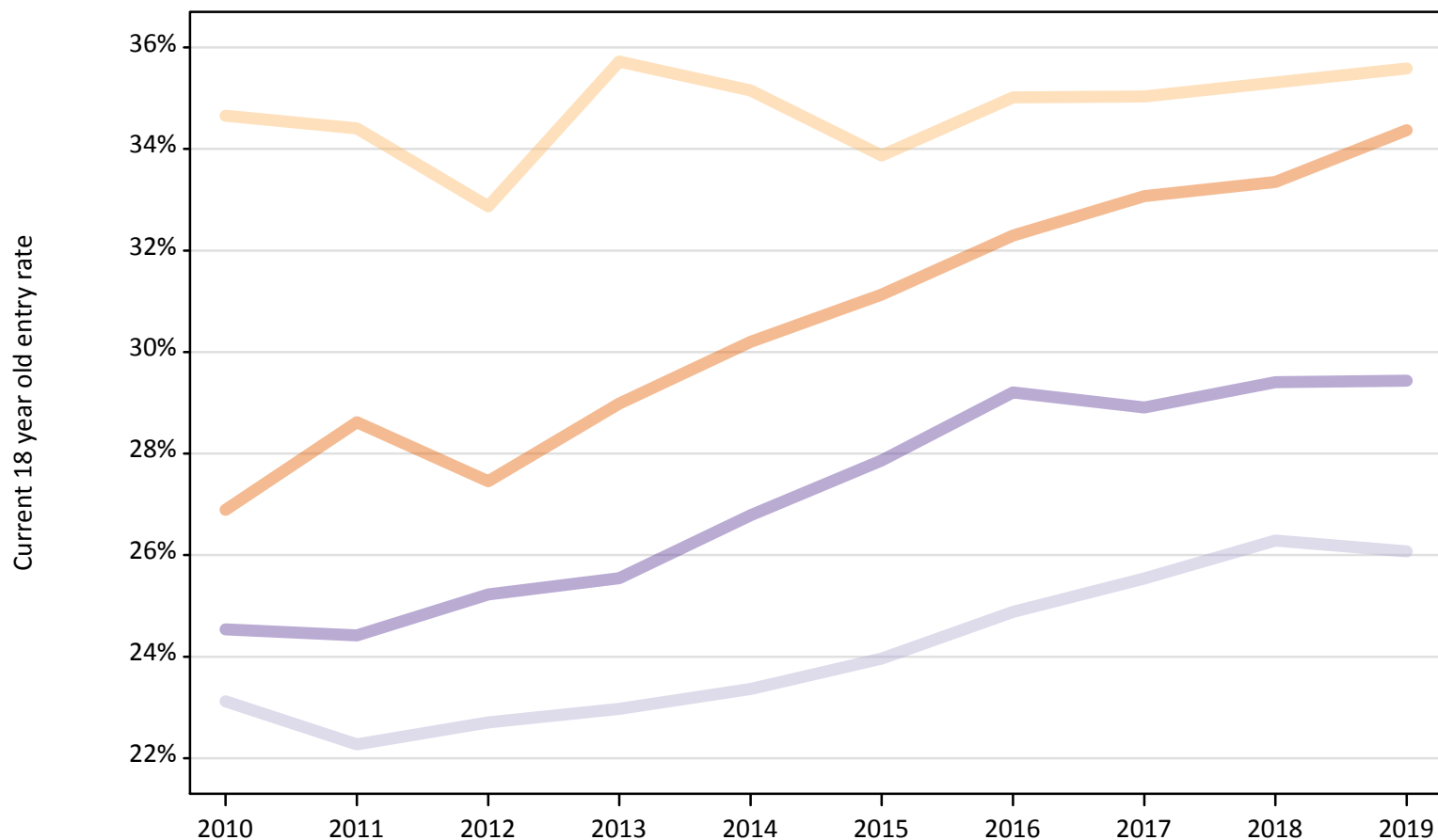
Selected age groups: difference between cycle and 2018 cycle

| Domicile of applicant | Age group    | 2010 | 2011 | 2012 | 2013 | 2014 | 2015 | 2016 | 2017 | 2018 | 2019 |
|-----------------------|--------------|------|------|------|------|------|------|------|------|------|------|
| Wales                 | 17 and under | 36%  | 32%  | -16% | 20%  | -12% | -28% | -8%  | -32% | 0%   | -12% |
|                       | 18           | -3%  | -7%  | -4%  | -5%  | -1%  | 4%   | 5%   | 2%   | 0%   | -2%  |
|                       | 19           | -3%  | 1%   | 5%   | 7%   | 11%  | 10%  | 13%  | 6%   | 0%   | 0%   |
|                       | 20 to 24     | -5%  | -3%  | 6%   | 7%   | 9%   | 8%   | 8%   | 10%  | 0%   | 0%   |
|                       | 25 and over  | -24% | -23% | -26% | -19% | -10% | -9%  | -11% | -10% | 0%   | -4%  |

Note: The percentage change is not recorded in the above table for groups with fewer than 10 placed applicants in that cycle or in the 2018 cycle.

### C.15 Entry rates for 18 year olds by UK country of domicile: 14 days after A level results day

Placed 18 year old applicants as a proportion of the 18 year old population



### C.16 Entry rates for 18 year olds by UK country of domicile: 14 days after A level results day

Placed 18 year old applicants as a proportion of the 18 year old population

| Domicile of applicant | Age group | 2010  | 2011  | 2012  | 2013  | 2014  | 2015  | 2016  | 2017  | 2018  | 2019  |
|-----------------------|-----------|-------|-------|-------|-------|-------|-------|-------|-------|-------|-------|
| England               | 18        | 26.9% | 28.6% | 27.5% | 29.0% | 30.2% | 31.1% | 32.3% | 33.1% | 33.3% | 34.4% |
| Northern Ireland      | 18        | 34.7% | 34.4% | 32.9% | 35.7% | 35.2% | 33.9% | 35.0% | 35.0% | 35.3% | 35.6% |
| Scotland              | 18        | 23.1% | 22.3% | 22.7% | 23.0% | 23.4% | 24.0% | 24.9% | 25.5% | 26.3% | 26.1% |
| Wales                 | 18        | 24.5% | 24.4% | 25.2% | 25.5% | 26.8% | 27.9% | 29.2% | 28.9% | 29.4% | 29.4% |