

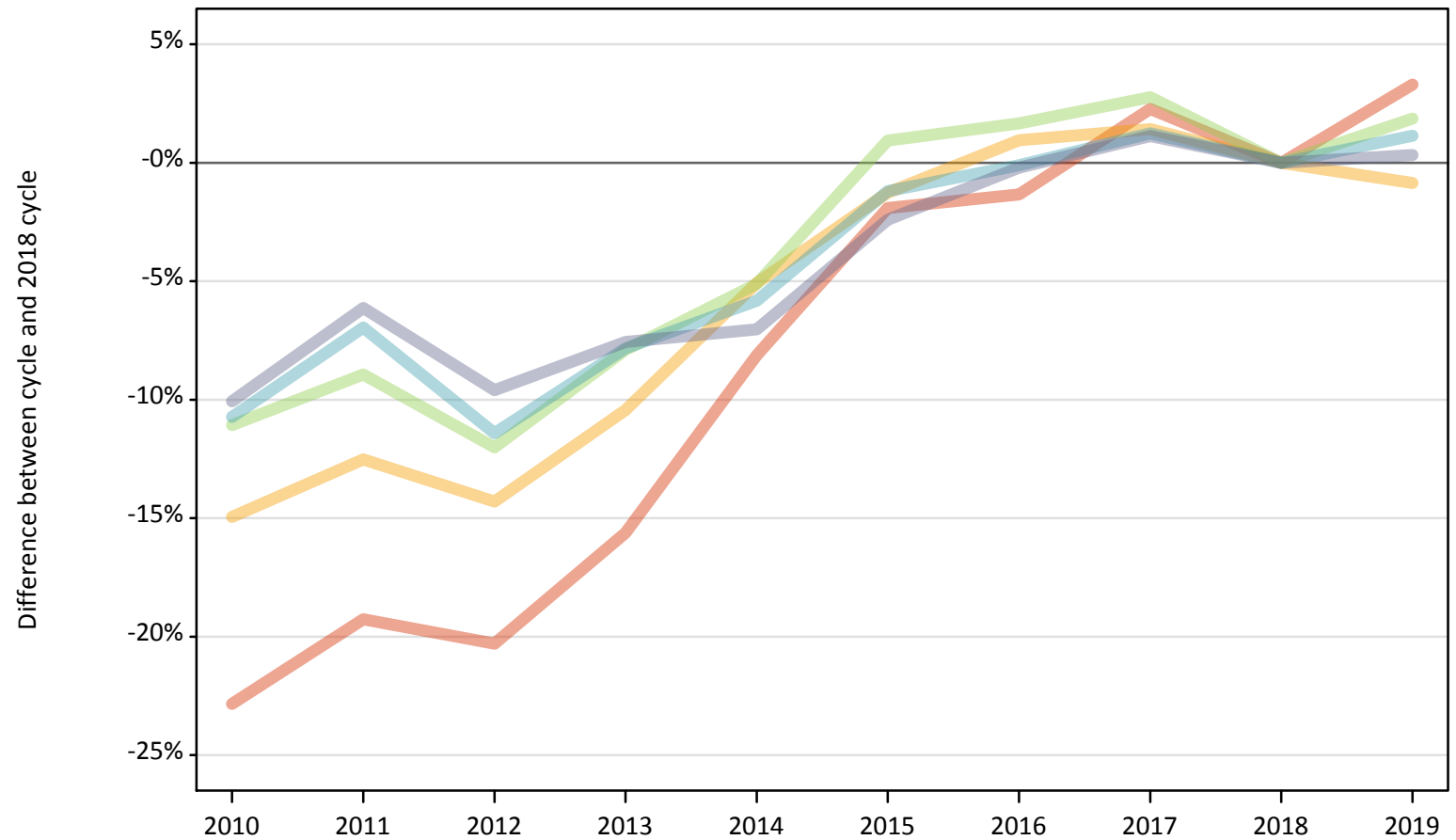
# Daily Clearing Analysis: POLAR4

Analysis at 00:05 on Thursday 29 August 2019 (14 days after A level results day)

P.1 Placed 18 year old applicants from England by POLAR4 quintile: 14 days after A level results day

Placed 18 year old applicants: change relative to 2018 cycle totals

- Quintile 1
- Quintile 2
- Quintile 3
- Quintile 4
- Quintile 5



Note: The percentage change is not plotted in the above chart for groups with fewer than 30 placed applicants in any one cycle.

## P.2 Placed 18 year old applicants from England by POLAR4 quintile: 14 days after A level results day

Applicant Status	POLAR4	2010	2011	2012	2013	2014	2015	2016	2017	2018	2019
Placed	Quintile 1	17,000	17,780	17,560	18,590	20,240	21,610	21,730	22,530	22,030	22,760
	Quintile 2	26,060	26,800	26,260	27,440	29,090	30,260	30,930	31,080	30,640	30,380
	Quintile 3	33,240	34,030	32,890	34,430	35,460	37,720	37,990	38,410	37,380	38,070
	Quintile 4	41,450	43,200	41,130	42,800	43,730	45,880	46,380	47,010	46,430	46,960
	Quintile 5	59,450	62,050	59,760	61,110	61,460	64,510	65,970	66,850	66,100	66,320

## P.3 Placed 18 year old applicants from England by POLAR4 quintile: 14 days after A level results day

Placed 18 year old applicants: change relative to 2018 cycle totals

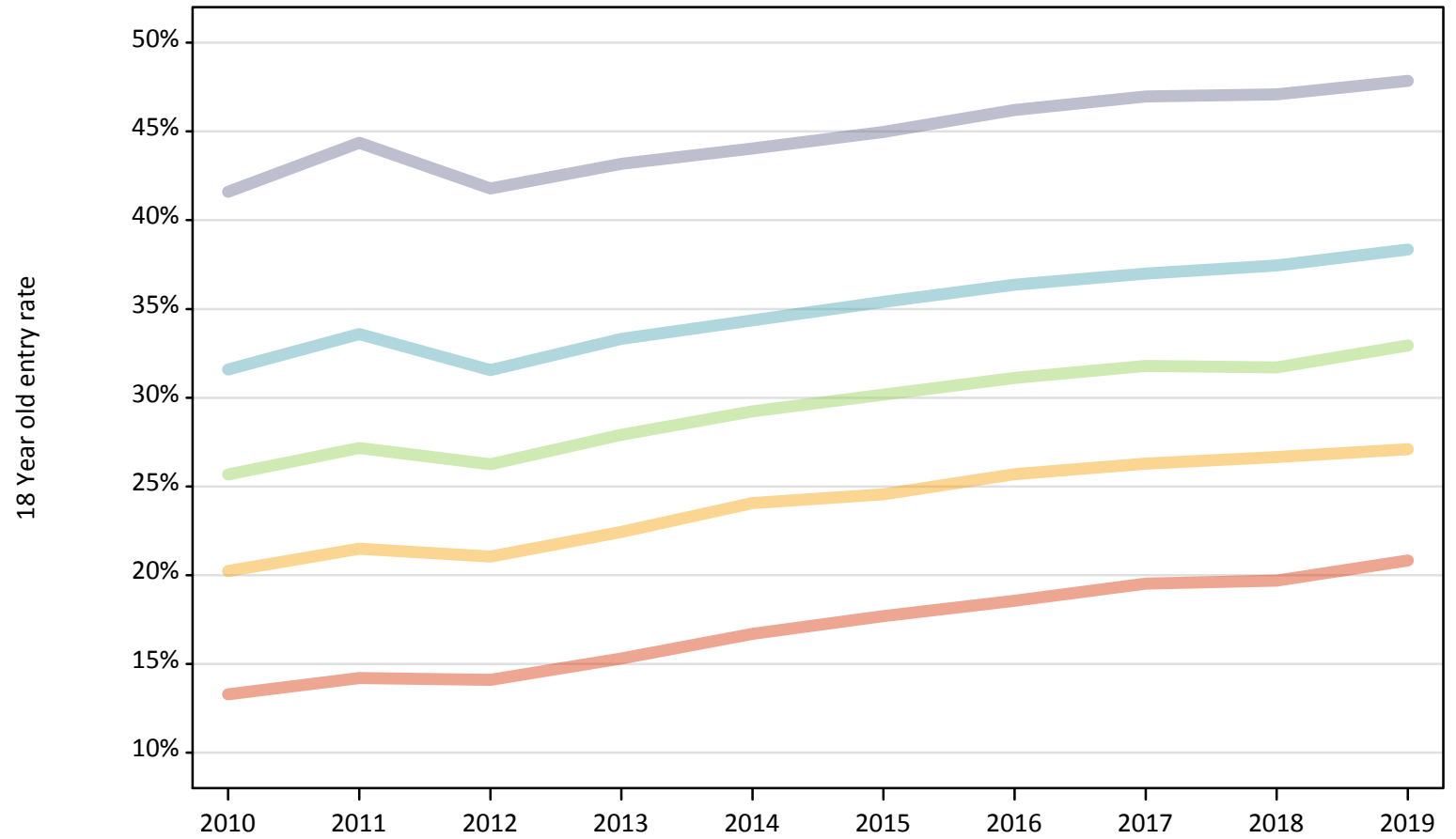
Applicant Status	POLAR4	2010	2011	2012	2013	2014	2015	2016	2017	2018	2019
Placed	Quintile 1	-23%	-19%	-20%	-16%	-8%	-2%	-1%	2%	0%	3%
	Quintile 2	-15%	-13%	-14%	-10%	-5%	-1%	1%	1%	0%	-1%
	Quintile 3	-11%	-9%	-12%	-8%	-5%	1%	2%	3%	0%	2%
	Quintile 4	-11%	-7%	-11%	-8%	-6%	-1%	-0%	1%	0%	1%
	Quintile 5	-10%	-6%	-10%	-8%	-7%	-2%	-0%	1%	0%	0%

Note: The percentage change is not recorded in the above table for groups with fewer than 10 placed applicants in that cycle or in the 2018 cycle.

## P.4 Placed 18 year old applicants from England by POLAR4 quintile: 14 days after A level results day

Placed 18 year old applicants: entry rate

- Quintile 1
- Quintile 2
- Quintile 3
- Quintile 4
- Quintile 5



**P.5 Placed 18 year old applicants from England by POLAR4 quintile: 14 days after A level results day**

Placed 18 year old applicants: entry rate

Applicant Status	POLAR4	2010	2011	2012	2013	2014	2015	2016	2017	2018	2019
Placed	Quintile 1	13.3%	14.2%	14.1%	15.3%	16.7%	17.7%	18.6%	19.5%	19.7%	20.8%
	Quintile 2	20.2%	21.5%	21.1%	22.4%	24.1%	24.6%	25.7%	26.3%	26.7%	27.1%
	Quintile 3	25.7%	27.2%	26.2%	27.9%	29.2%	30.2%	31.1%	31.8%	31.7%	32.9%
	Quintile 4	31.6%	33.6%	31.6%	33.3%	34.4%	35.4%	36.4%	37.0%	37.4%	38.3%
	Quintile 5	41.6%	44.4%	41.8%	43.2%	44.0%	45.0%	46.2%	47.0%	47.1%	47.8%

**P.6 Placed 18 year old applicants from England by POLAR4 quintile: 14 days after A level results day**

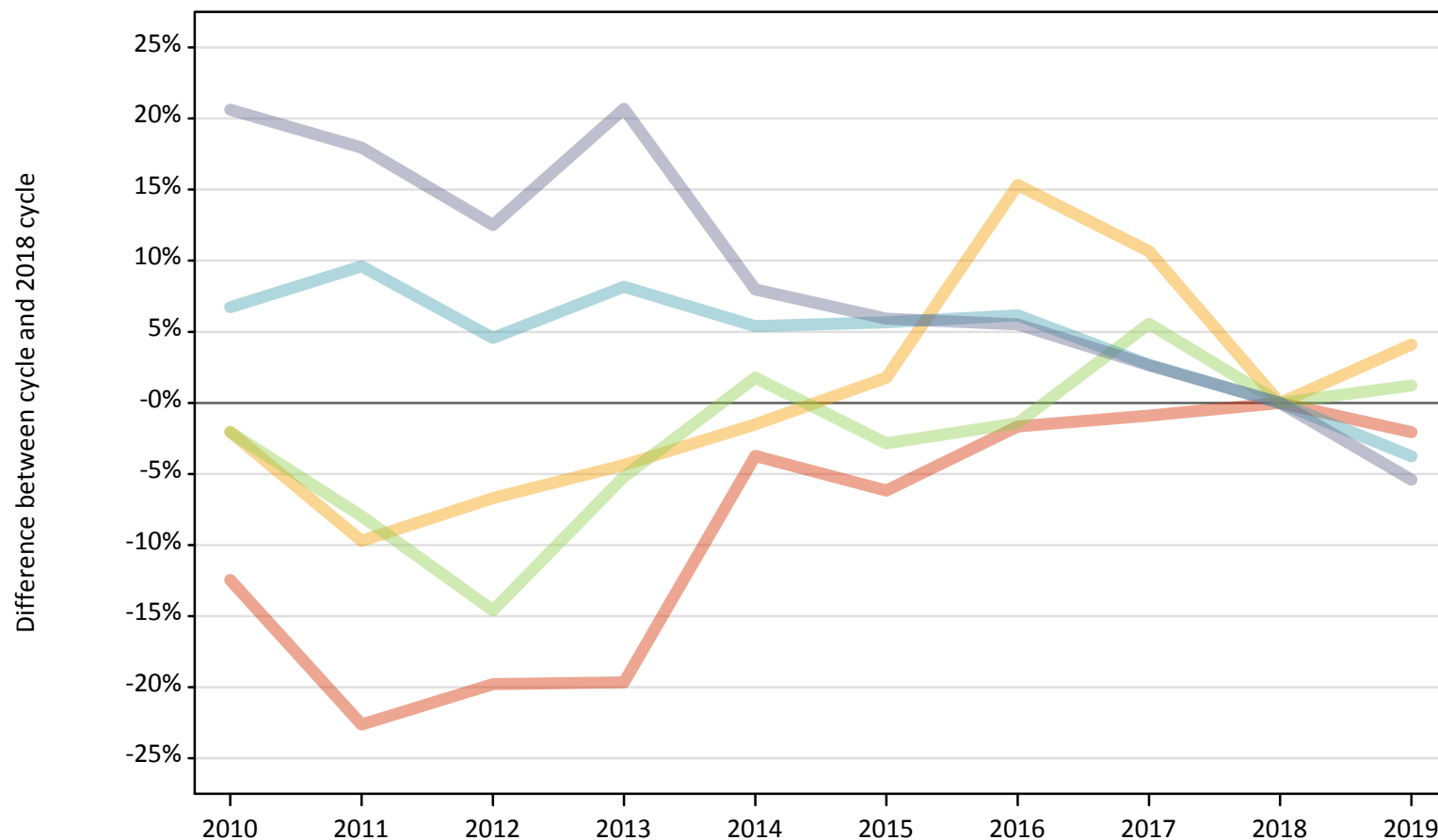
Placed 18 year old applicants: entry rate (indexed to 100 = Quintile 1)

Applicant Status	POLAR4	2010	2011	2012	2013	2014	2015	2016	2017	2018	2019
Placed	Quintile 1	100	100	100	100	100	100	100	100	100	100
	Quintile 2	152	151	149	147	144	139	138	135	135	130
	Quintile 3	193	191	186	182	175	171	168	163	161	158
	Quintile 4	238	236	224	218	206	200	196	189	190	184
	Quintile 5	313	312	296	282	264	254	249	241	239	230

### P.7 Placed 18 year old applicants from Northern Ireland by POLAR4 quintile: 14 days after A level results day

Placed 18 year old applicants: change relative to 2018 cycle totals

- Quintile 1
- Quintile 2
- Quintile 3
- Quintile 4
- Quintile 5



Note: The percentage change is not plotted in the above chart for groups with fewer than 30 placed applicants in any one cycle.

**P.8 Placed 18 year old applicants from Northern Ireland by POLAR4 quintile: 14 days after A level results day**

Applicant Status	POLAR4	2010	2011	2012	2013	2014	2015	2016	2017	2018	2019
Placed	Quintile 1	680	600	620	630	750	730	770	770	780	760
	Quintile 2	720	660	680	700	720	740	840	810	730	760
	Quintile 3	1,380	1,290	1,200	1,330	1,430	1,360	1,380	1,480	1,400	1,420
	Quintile 4	2,220	2,280	2,180	2,250	2,190	2,200	2,210	2,140	2,080	2,000
	Quintile 5	3,830	3,750	3,570	3,830	3,430	3,360	3,350	3,260	3,180	3,000

**P.9 Placed 18 year old applicants from Northern Ireland by POLAR4 quintile: 14 days after A level results day**

Placed 18 year old applicants: change relative to 2018 cycle totals

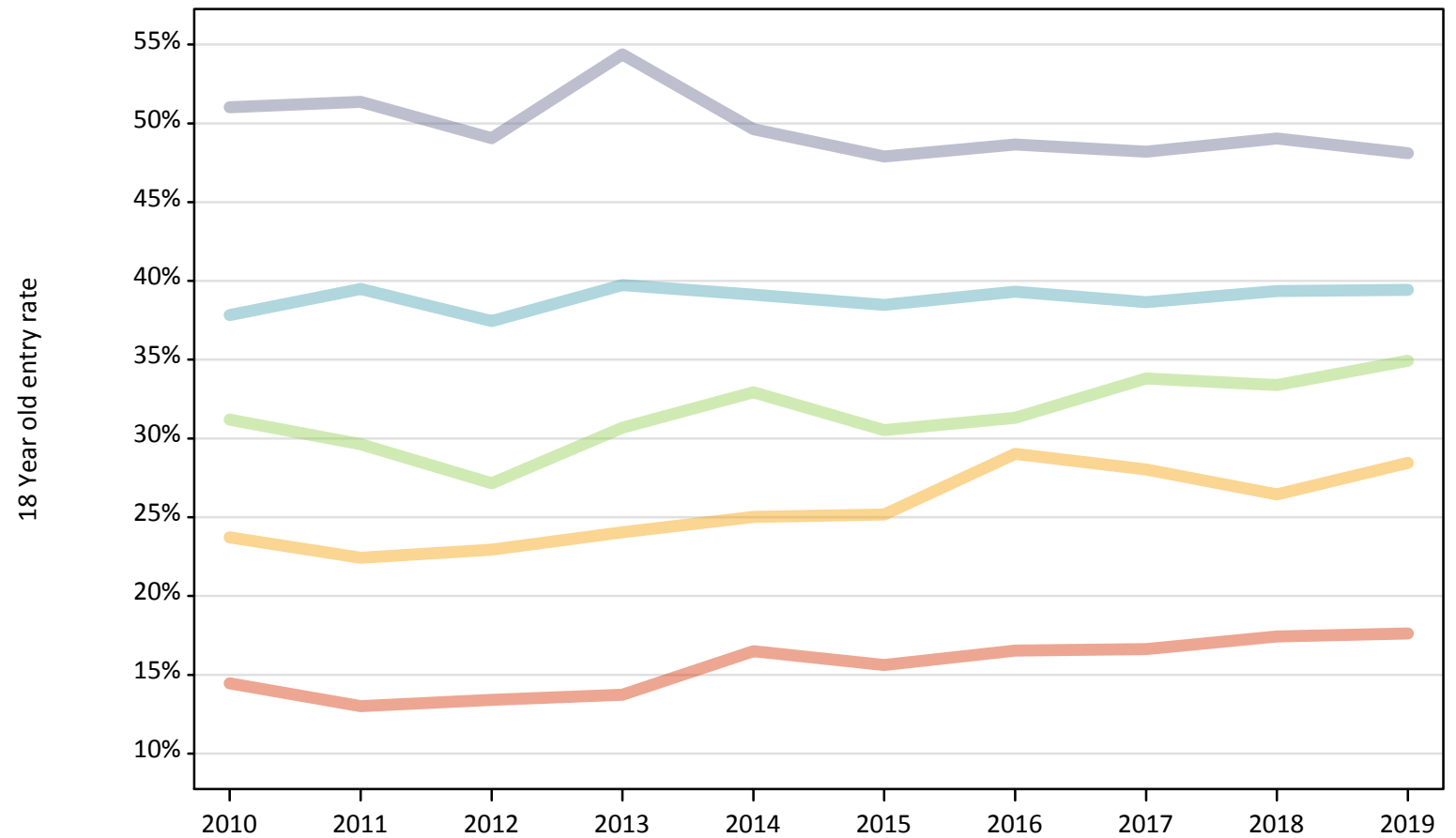
Applicant Status	POLAR4	2010	2011	2012	2013	2014	2015	2016	2017	2018	2019
Placed	Quintile 1	-12%	-23%	-20%	-20%	-4%	-6%	-2%	-1%	0%	-2%
	Quintile 2	-2%	-10%	-7%	-4%	-2%	2%	15%	11%	0%	4%
	Quintile 3	-2%	-8%	-15%	-5%	2%	-3%	-1%	6%	0%	1%
	Quintile 4	7%	10%	5%	8%	5%	6%	6%	3%	0%	-4%
	Quintile 5	21%	18%	13%	21%	8%	6%	6%	3%	0%	-5%

Note: The percentage change is not recorded in the above table for groups with fewer than 10 placed applicants in that cycle or in the 2018 cycle.

**P.10 Placed 18 year old applicants from Northern Ireland by POLAR4 quintile: 14 days after A level results day**

Placed 18 year old applicants: entry rate

- Quintile 1
- Quintile 2
- Quintile 3
- Quintile 4
- Quintile 5



**P.11 Placed 18 year old applicants from Northern Ireland by POLAR4 quintile: 14 days after A level results day**

Placed 18 year old applicants: entry rate

Applicant Status	POLAR4	2010	2011	2012	2013	2014	2015	2016	2017	2018	2019
Placed	Quintile 1	14.5%	13.0%	13.4%	13.7%	16.5%	15.6%	16.5%	16.6%	17.4%	17.6%
	Quintile 2	23.7%	22.4%	22.9%	24.0%	25.0%	25.2%	29.0%	28.0%	26.4%	28.4%
	Quintile 3	31.2%	29.6%	27.2%	30.7%	32.9%	30.5%	31.3%	33.8%	33.4%	34.9%
	Quintile 4	37.8%	39.5%	37.5%	39.7%	39.1%	38.5%	39.3%	38.6%	39.3%	39.4%
	Quintile 5	51.0%	51.4%	49.1%	54.4%	49.6%	47.9%	48.7%	48.2%	49.0%	48.1%

**P.12 Placed 18 year old applicants from Northern Ireland by POLAR4 quintile: 14 days after A level results day**

Placed 18 year old applicants: entry rate (indexed to 100 = Quintile 1)

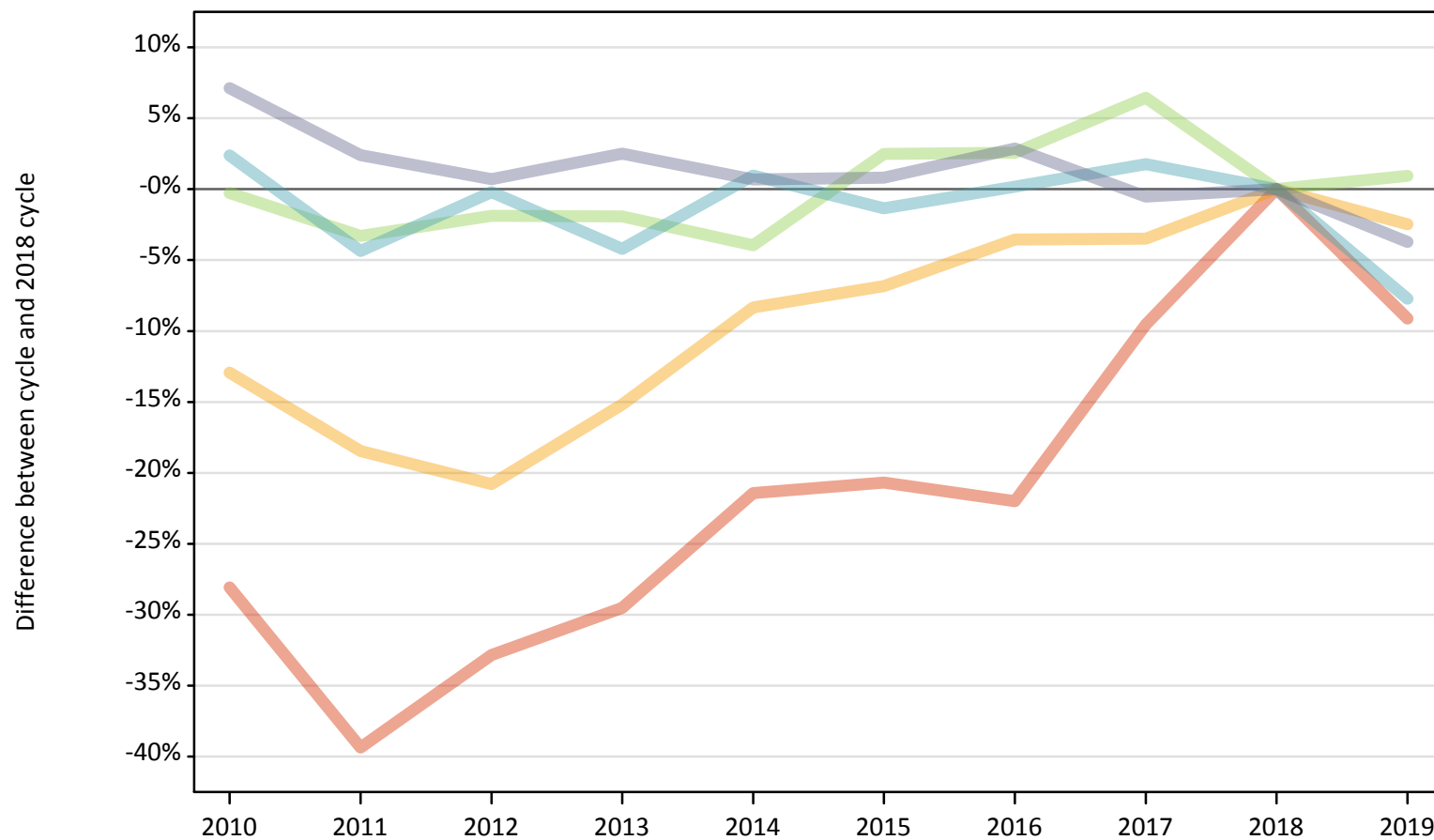
Applicant Status	POLAR4	2010	2011	2012	2013	2014	2015	2016	2017	2018	2019
Placed	Quintile 1	100	100	100	100	100	100	100	100	100	100
	Quintile 2	164	172	171	175	152	161	175	169	152	161
	Quintile 3	216	228	203	224	200	195	189	203	191	198
	Quintile 4	262	304	279	289	237	246	238	232	226	224
	Quintile 5	353	395	366	396	301	307	294	290	281	273



### P.13 Placed 18 year old applicants from Scotland by POLAR4 quintile: 14 days after A level results day

Placed 18 year old applicants: change relative to 2018 cycle totals

- Quintile 1
- Quintile 2
- Quintile 3
- Quintile 4
- Quintile 5



Note: The percentage change is not plotted in the above chart for groups with fewer than 30 placed applicants in any one cycle.

**P.14 Placed 18 year old applicants from Scotland by POLAR4 quintile: 14 days after A level results day**

Applicant Status	POLAR4	2010	2011	2012	2013	2014	2015	2016	2017	2018	2019
Placed	Quintile 1	500	420	460	490	540	550	540	630	690	630
	Quintile 2	1,270	1,190	1,160	1,240	1,340	1,360	1,410	1,410	1,460	1,430
	Quintile 3	2,240	2,170	2,210	2,200	2,160	2,300	2,310	2,390	2,250	2,270
	Quintile 4	3,440	3,210	3,350	3,220	3,390	3,310	3,360	3,420	3,360	3,100
	Quintile 5	7,290	6,970	6,850	6,980	6,850	6,860	7,000	6,770	6,810	6,550

**P.15 Placed 18 year old applicants from Scotland by POLAR4 quintile: 14 days after A level results day**

Placed 18 year old applicants: change relative to 2018 cycle totals

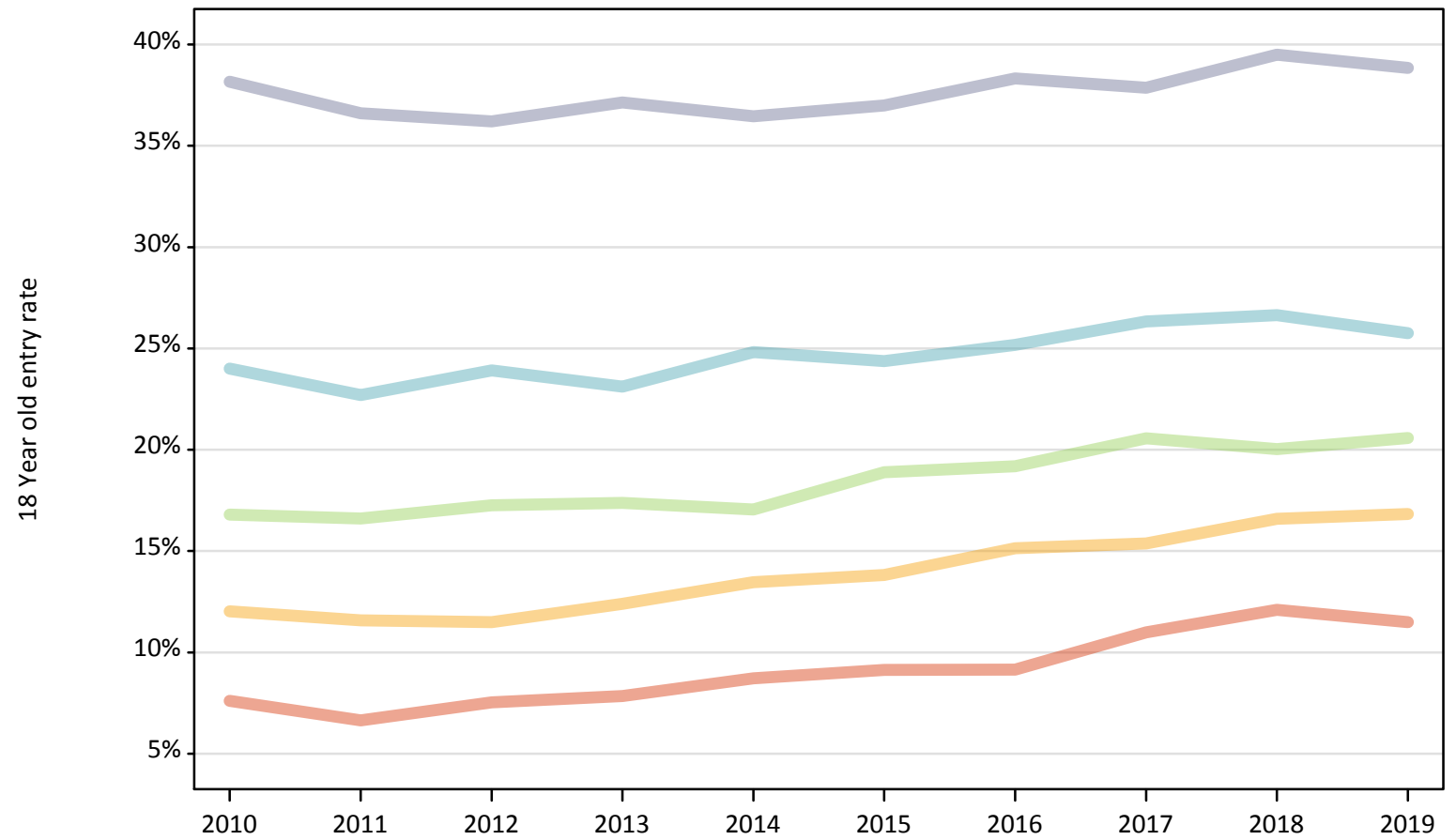
Applicant Status	POLAR4	2010	2011	2012	2013	2014	2015	2016	2017	2018	2019
Placed	Quintile 1	-28%	-39%	-33%	-30%	-21%	-21%	-22%	-10%	0%	-9%
	Quintile 2	-13%	-18%	-21%	-15%	-8%	-7%	-4%	-3%	0%	-2%
	Quintile 3	-0%	-3%	-2%	-2%	-4%	2%	3%	6%	0%	1%
	Quintile 4	2%	-4%	-0%	-4%	1%	-1%	0%	2%	0%	-8%
	Quintile 5	7%	2%	1%	2%	1%	1%	3%	-1%	0%	-4%

Note: The percentage change is not recorded in the above table for groups with fewer than 10 placed applicants in that cycle or in the 2018 cycle.

**P.16 Placed 18 year old applicants from Scotland by POLAR4 quintile: 14 days after A level results day**

Placed 18 year old applicants: entry rate

- Quintile 1
- Quintile 2
- Quintile 3
- Quintile 4
- Quintile 5



**P.17 Placed 18 year old applicants from Scotland by POLAR4 quintile: 14 days after A level results day**

Placed 18 year old applicants: entry rate

Applicant Status	POLAR4	2010	2011	2012	2013	2014	2015	2016	2017	2018	2019
Placed	Quintile 1	7.6%	6.6%	7.5%	7.9%	8.7%	9.1%	9.1%	11.0%	12.1%	11.5%
	Quintile 2	12.0%	11.6%	11.5%	12.4%	13.5%	13.8%	15.1%	15.4%	16.6%	16.8%
	Quintile 3	16.8%	16.6%	17.3%	17.4%	17.1%	18.9%	19.2%	20.6%	20.0%	20.6%
	Quintile 4	24.0%	22.7%	23.9%	23.1%	24.8%	24.4%	25.2%	26.3%	26.6%	25.8%
	Quintile 5	38.2%	36.6%	36.2%	37.1%	36.5%	37.0%	38.3%	37.9%	39.5%	38.8%

**P.18 Placed 18 year old applicants from Scotland by POLAR4 quintile: 14 days after A level results day**

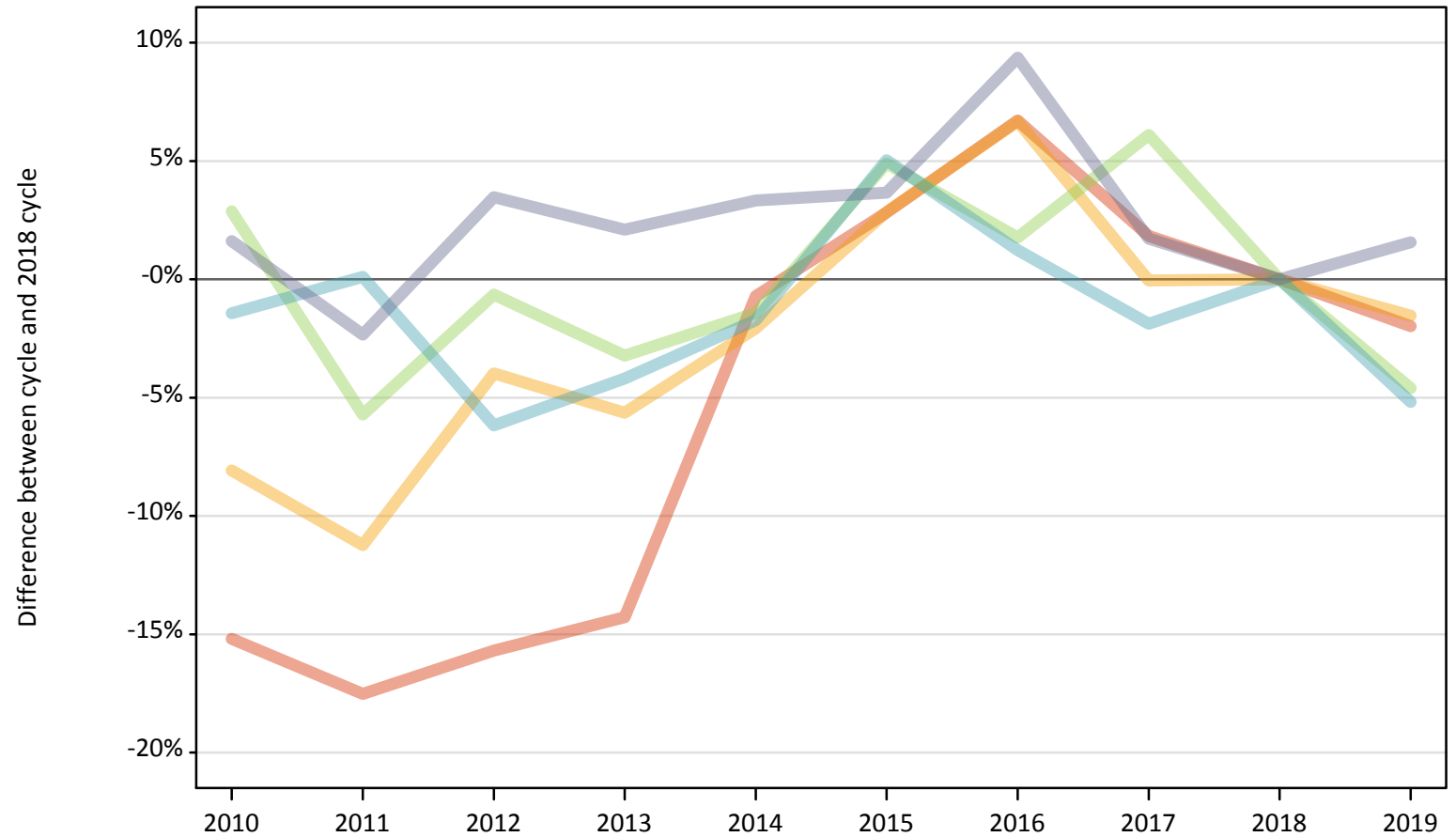
Placed 18 year old applicants: entry rate (indexed to 100 = Quintile 1)

Applicant Status	POLAR4	2010	2011	2012	2013	2014	2015	2016	2017	2018	2019
Placed	Quintile 1	100	100	100	100	100	100	100	100	100	100
	Quintile 2	158	174	153	158	155	151	165	140	137	146
	Quintile 3	221	250	229	221	196	207	210	187	166	179
	Quintile 4	316	342	318	294	285	267	275	240	220	224
	Quintile 5	502	551	481	473	418	405	419	345	326	338

**P.19 Placed 18 year old applicants from Wales by POLAR4 quintile: 14 days after A level results day**

Placed 18 year old applicants: change relative to 2018 cycle totals

- Quintile 1
- Quintile 2
- Quintile 3
- Quintile 4
- Quintile 5



Note: The percentage change is not plotted in the above chart for groups with fewer than 30 placed applicants in any one cycle.

**P.20 Placed 18 year old applicants from Wales by POLAR4 quintile: 14 days after A level results day**

Applicant Status	POLAR4	2010	2011	2012	2013	2014	2015	2016	2017	2018	2019
Placed	Quintile 1	1,200	1,170	1,190	1,210	1,410	1,460	1,510	1,440	1,420	1,390
	Quintile 2	2,040	1,970	2,130	2,090	2,170	2,280	2,360	2,220	2,220	2,180
	Quintile 3	2,390	2,190	2,310	2,250	2,290	2,440	2,370	2,470	2,330	2,220
	Quintile 4	2,000	2,030	1,900	1,940	1,990	2,130	2,050	1,990	2,030	1,920
	Quintile 5	2,140	2,050	2,180	2,150	2,170	2,180	2,300	2,140	2,100	2,140

**P.21 Placed 18 year old applicants from Wales by POLAR4 quintile: 14 days after A level results day**

Placed 18 year old applicants: change relative to 2018 cycle totals

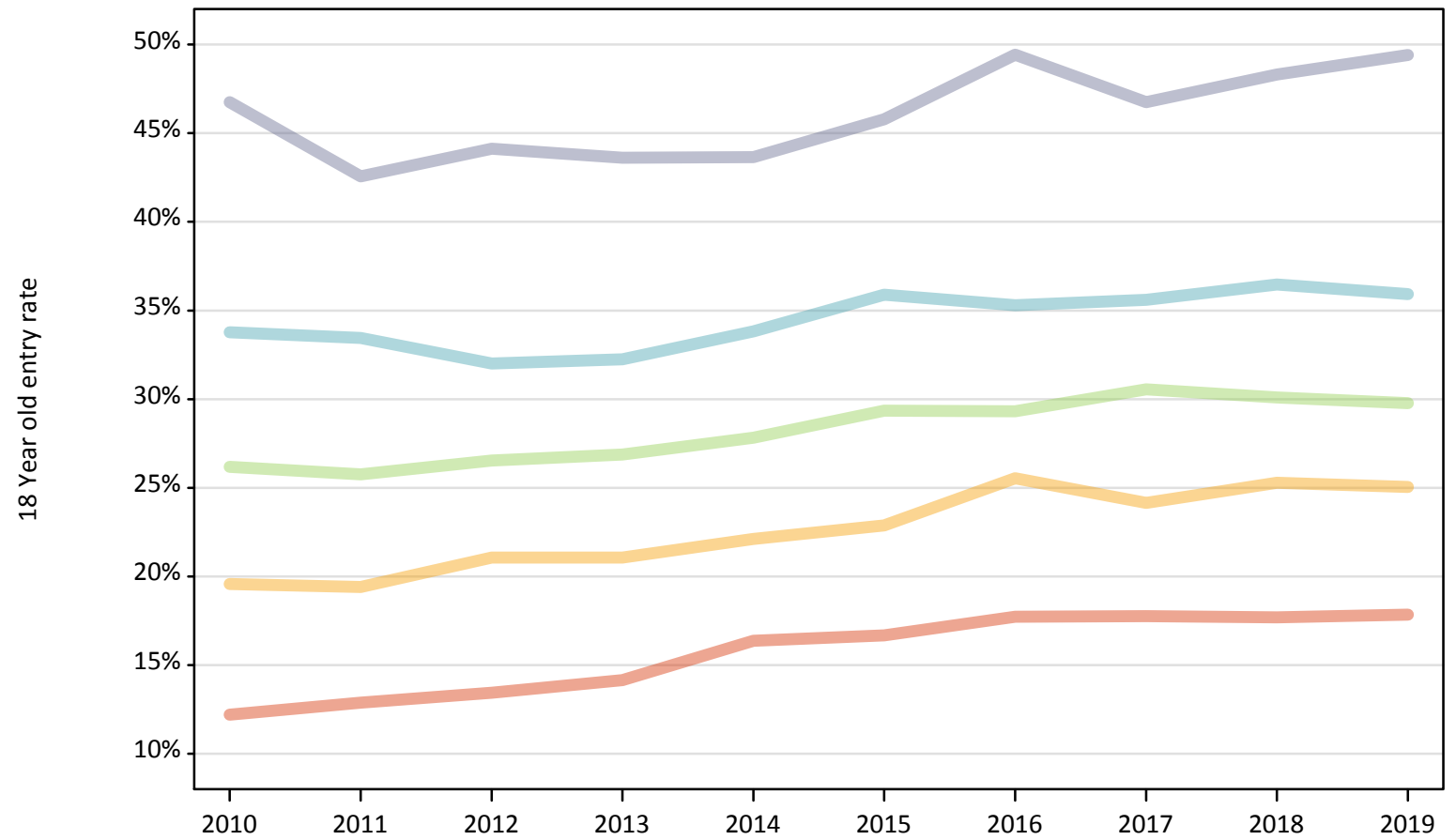
Applicant Status	POLAR4	2010	2011	2012	2013	2014	2015	2016	2017	2018	2019
Placed	Quintile 1	-15%	-18%	-16%	-14%	-1%	3%	7%	2%	0%	-2%
	Quintile 2	-8%	-11%	-4%	-6%	-2%	3%	7%	-0%	0%	-2%
	Quintile 3	3%	-6%	-1%	-3%	-1%	5%	2%	6%	0%	-5%
	Quintile 4	-1%	0%	-6%	-4%	-2%	5%	1%	-2%	0%	-5%
	Quintile 5	2%	-2%	3%	2%	3%	4%	9%	2%	0%	2%

Note: The percentage change is not recorded in the above table for groups with fewer than 10 placed applicants in that cycle or in the 2018 cycle.

## P.22 Placed 18 year old applicants from Wales by POLAR4 quintile: 14 days after A level results day

Placed 18 year old applicants: entry rate

- Quintile 1
- Quintile 2
- Quintile 3
- Quintile 4
- Quintile 5



**P.23 Placed 18 year old applicants from Wales by POLAR4 quintile: 14 days after A level results day**

Placed 18 year old applicants: entry rate

Applicant Status	POLAR4	2010	2011	2012	2013	2014	2015	2016	2017	2018	2019
Placed	Quintile 1	12.2%	12.9%	13.4%	14.2%	16.4%	16.7%	17.7%	17.8%	17.7%	17.9%
	Quintile 2	19.6%	19.4%	21.1%	21.1%	22.1%	22.9%	25.5%	24.1%	25.3%	25.1%
	Quintile 3	26.2%	25.8%	26.5%	26.9%	27.8%	29.3%	29.3%	30.6%	30.1%	29.8%
	Quintile 4	33.8%	33.4%	32.0%	32.2%	33.8%	35.9%	35.3%	35.6%	36.5%	35.9%
	Quintile 5	46.8%	42.6%	44.1%	43.6%	43.6%	45.8%	49.4%	46.8%	48.3%	49.4%

**P.24 Placed 18 year old applicants from Wales by POLAR4 quintile: 14 days after A level results day**

Placed 18 year old applicants: entry rate (indexed to 100 = Quintile 1)

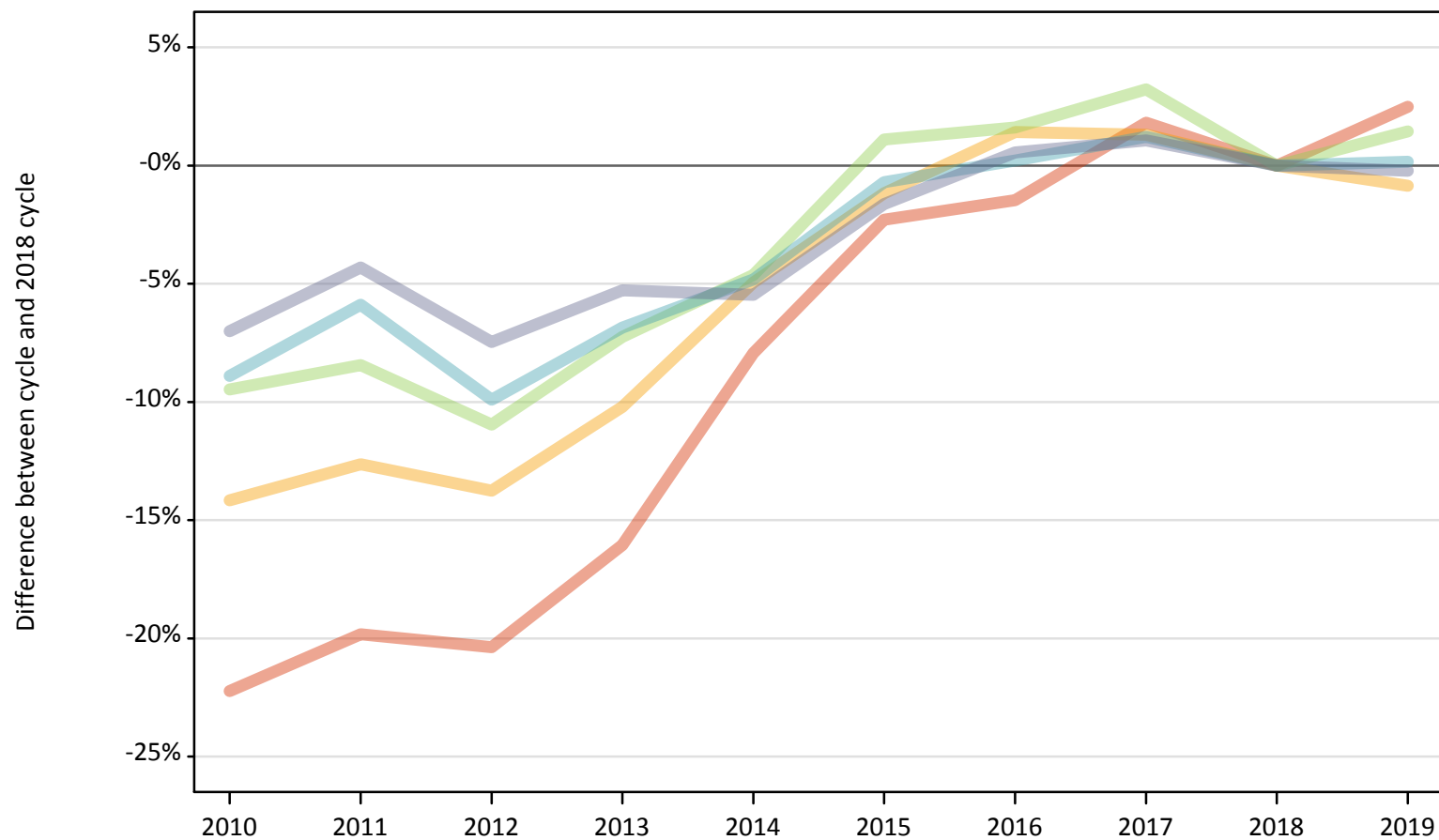
Applicant Status	POLAR4	2010	2011	2012	2013	2014	2015	2016	2017	2018	2019
Placed	Quintile 1	100	100	100	100	100	100	100	100	100	100
	Quintile 2	160	150	157	149	135	137	144	136	143	140
	Quintile 3	215	200	198	190	170	176	165	172	170	167
	Quintile 4	277	260	238	228	207	215	199	200	206	201
	Quintile 5	383	330	328	308	266	274	279	263	273	277



## P.25 Placed 18 year old applicants from the UK by POLAR4 quintile: 14 days after A level results day

Placed 18 year old applicants: change relative to 2018 cycle totals

- Quintile 1
- Quintile 2
- Quintile 3
- Quintile 4
- Quintile 5



Note: The percentage change is not plotted in the above chart for groups with fewer than 30 placed applicants in any one cycle.

**P.26 Placed 18 year old applicants from the UK by POLAR4 quintile: 14 days after A level results day**

Applicant Status	POLAR4	2010	2011	2012	2013	2014	2015	2016	2017	2018	2019
Placed	Quintile 1	19,380	19,970	19,840	20,910	22,940	24,340	24,550	25,360	24,910	25,530
	Quintile 2	30,090	30,620	30,230	31,470	33,320	34,640	35,550	35,510	35,050	34,750
	Quintile 3	39,250	39,690	38,600	40,210	41,340	43,830	44,050	44,750	43,350	43,980
	Quintile 4	49,100	50,720	48,560	50,200	51,300	53,510	54,010	54,550	53,890	53,980
	Quintile 5	72,710	74,820	72,360	74,060	73,910	76,920	78,620	79,020	78,190	78,020

**P.27 Placed 18 year old applicants from the UK by POLAR4 quintile: 14 days after A level results day**

Placed 18 year old applicants: change relative to 2018 cycle totals

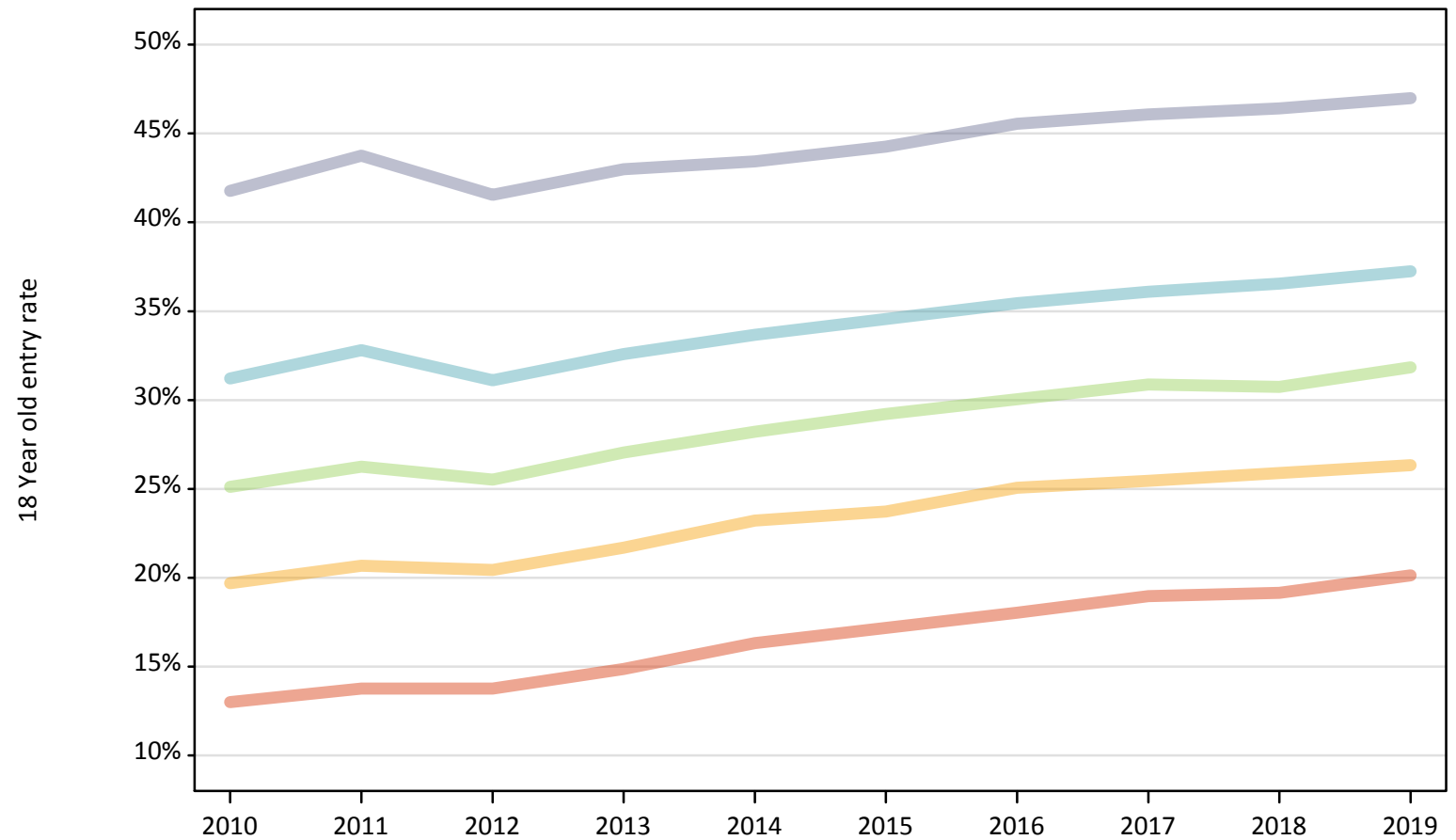
Applicant Status	POLAR4	2010	2011	2012	2013	2014	2015	2016	2017	2018	2019
Placed	Quintile 1	-22%	-20%	-20%	-16%	-8%	-2%	-1%	2%	0%	2%
	Quintile 2	-14%	-13%	-14%	-10%	-5%	-1%	1%	1%	0%	-1%
	Quintile 3	-9%	-8%	-11%	-7%	-5%	1%	2%	3%	0%	1%
	Quintile 4	-9%	-6%	-10%	-7%	-5%	-1%	0%	1%	0%	0%
	Quintile 5	-7%	-4%	-7%	-5%	-5%	-2%	1%	1%	0%	-0%

Note: The percentage change is not recorded in the above table for groups with fewer than 10 placed applicants in that cycle or in the 2018 cycle.

## P.28 Placed 18 year old applicants from the UK by POLAR4 quintile: 14 days after A level results day

Placed 18 year old applicants: entry rate

- Quintile 1
- Quintile 2
- Quintile 3
- Quintile 4
- Quintile 5



**P.29 Placed 18 year old applicants from the UK by POLAR4 quintile: 14 days after A level results day**

Placed 18 year old applicants: entry rate

Applicant Status	POLAR4	2010	2011	2012	2013	2014	2015	2016	2017	2018	2019
Placed	Quintile 1	13.0%	13.8%	13.8%	14.9%	16.3%	17.2%	18.0%	19.0%	19.2%	20.1%
	Quintile 2	19.7%	20.7%	20.4%	21.7%	23.2%	23.7%	25.1%	25.5%	25.9%	26.3%
	Quintile 3	25.1%	26.2%	25.5%	27.0%	28.2%	29.2%	30.0%	30.9%	30.7%	31.8%
	Quintile 4	31.2%	32.8%	31.1%	32.6%	33.7%	34.6%	35.5%	36.1%	36.5%	37.3%
	Quintile 5	41.8%	43.8%	41.5%	43.0%	43.4%	44.3%	45.6%	46.1%	46.4%	47.0%

**P.30 Placed 18 year old applicants from the UK by POLAR4 quintile: 14 days after A level results day**

Placed 18 year old applicants: entry rate (indexed to 100 = Quintile 1)

Applicant Status	POLAR4	2010	2011	2012	2013	2014	2015	2016	2017	2018	2019
Placed	Quintile 1	100	100	100	100	100	100	100	100	100	100
	Quintile 2	151	150	149	146	142	138	139	134	135	131
	Quintile 3	193	191	186	182	173	170	167	163	160	158
	Quintile 4	240	238	226	219	206	201	197	190	191	185
	Quintile 5	321	318	302	289	266	257	253	243	242	233