

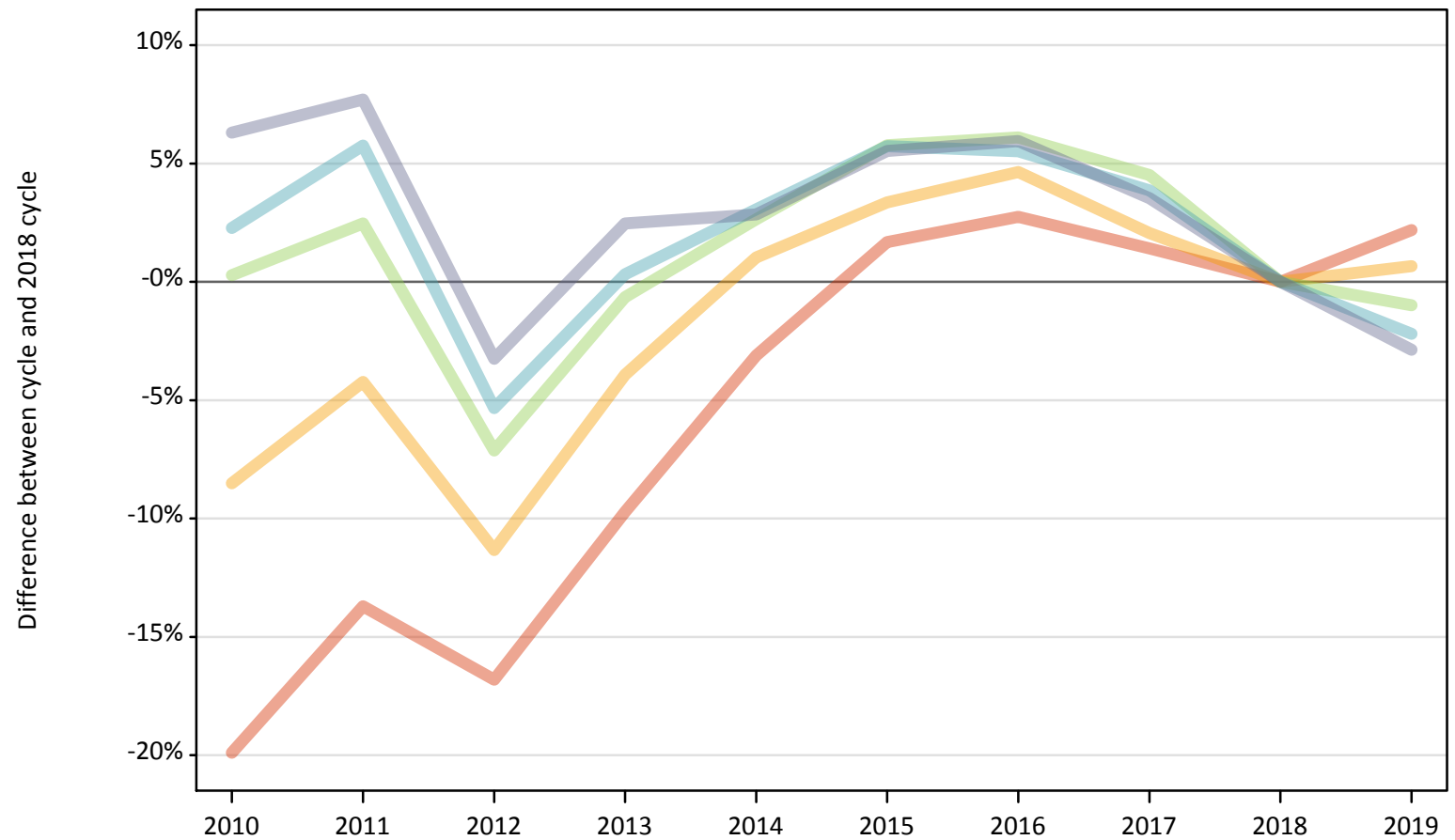
# Daily Clearing Analysis: IMD2015

Analysis at 00:05 on Thursday 29 August 2019 (14 days after A level results day)

## J.1 Placed applicants from England by IMD2015 quintile: 14 days after A level results day

Placed applicants: change relative to 2018 cycle totals

- Quintile 1
- Quintile 2
- Quintile 3
- Quintile 4
- Quintile 5



Note: The percentage change is not plotted in the above chart for groups with fewer than 30 placed applicants in any one cycle.

### J.2 Placed applicants from England by IMD2015 quintile: 14 days after A level results day

Applicant Status IMD2015		2010	2011	2012	2013	2014	2015	2016	2017	2018	2019
Placed	Quintile 1	52,410	56,460	54,430	59,070	63,390	66,530	67,230	66,360	65,430	66,860
	Quintile 2	58,250	60,970	56,450	61,170	64,320	65,810	66,620	64,980	63,670	64,090
	Quintile 3	65,080	66,490	60,270	64,470	66,610	68,640	68,850	67,820	64,890	64,250
	Quintile 4	72,700	75,170	67,290	71,310	73,260	75,150	75,000	73,830	71,080	69,520
	Quintile 5	88,670	89,840	80,700	85,460	85,790	88,030	88,370	86,350	83,410	81,010

### J.3 Placed applicants from England by IMD2015 quintile: 14 days after A level results day

Placed applicants: change relative to 2018 cycle totals

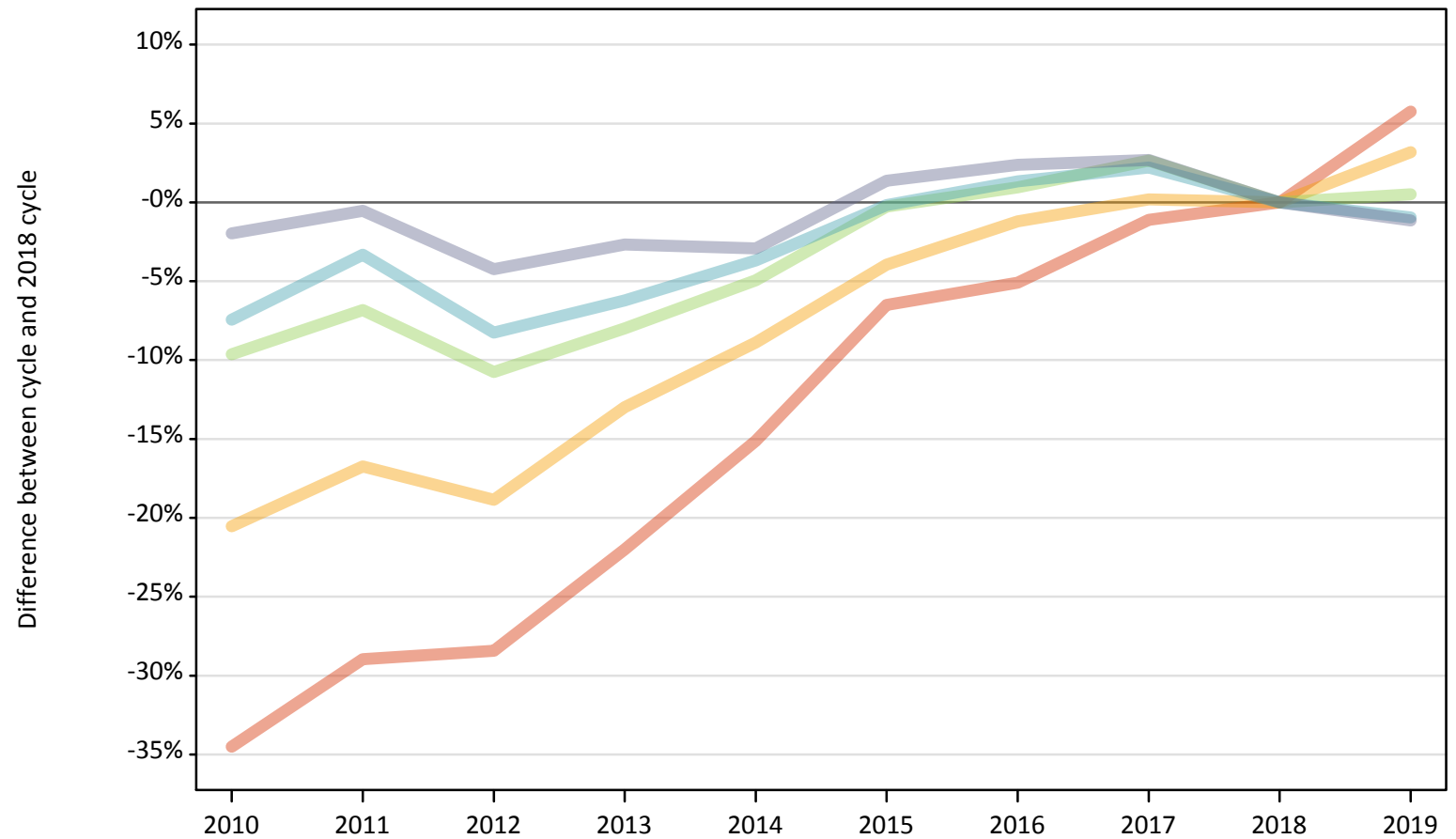
Applicant Status IMD2015		2010	2011	2012	2013	2014	2015	2016	2017	2018	2019
Placed	Quintile 1	-20%	-14%	-17%	-10%	-3%	2%	3%	1%	0%	2%
	Quintile 2	-9%	-4%	-11%	-4%	1%	3%	5%	2%	0%	1%
	Quintile 3	0%	2%	-7%	-1%	3%	6%	6%	5%	0%	-1%
	Quintile 4	2%	6%	-5%	0%	3%	6%	6%	4%	0%	-2%
	Quintile 5	6%	8%	-3%	2%	3%	6%	6%	4%	0%	-3%

Note: The percentage change is not recorded in the above table for groups with fewer than 10 placed applicants in that cycle or in the 2018 cycle.

### J.4 Placed 18 year old applicants from England by IMD2015 quintile: 14 days after A level results day

Placed 18 year old applicants: change relative to 2018 cycle totals

- Quintile 1
- Quintile 2
- Quintile 3
- Quintile 4
- Quintile 5



Note: The percentage change is not plotted in the above chart for groups with fewer than 30 placed applicants in any one cycle.

### J.5 Placed 18 year old applicants from England by IMD2015 quintile: 14 days after A level results day

Applicant Status IMD2015		2010	2011	2012	2013	2014	2015	2016	2017	2018	2019
Placed	Quintile 1	20,450	22,180	22,340	24,350	26,500	29,180	29,630	30,870	31,220	33,010
	Quintile 2	26,350	27,610	26,910	28,860	30,220	31,860	32,770	33,220	33,160	34,220
	Quintile 3	33,870	34,920	33,440	34,480	35,620	37,370	37,830	38,470	37,480	37,670
	Quintile 4	41,140	42,980	40,780	41,690	42,820	44,380	45,050	45,440	44,450	44,030
	Quintile 5	55,400	56,210	54,120	55,000	54,870	57,290	57,860	58,030	56,510	55,870

### J.6 Placed 18 year old applicants from England by IMD2015 quintile: 14 days after A level results day

Placed 18 year old applicants: change relative to 2018 cycle totals

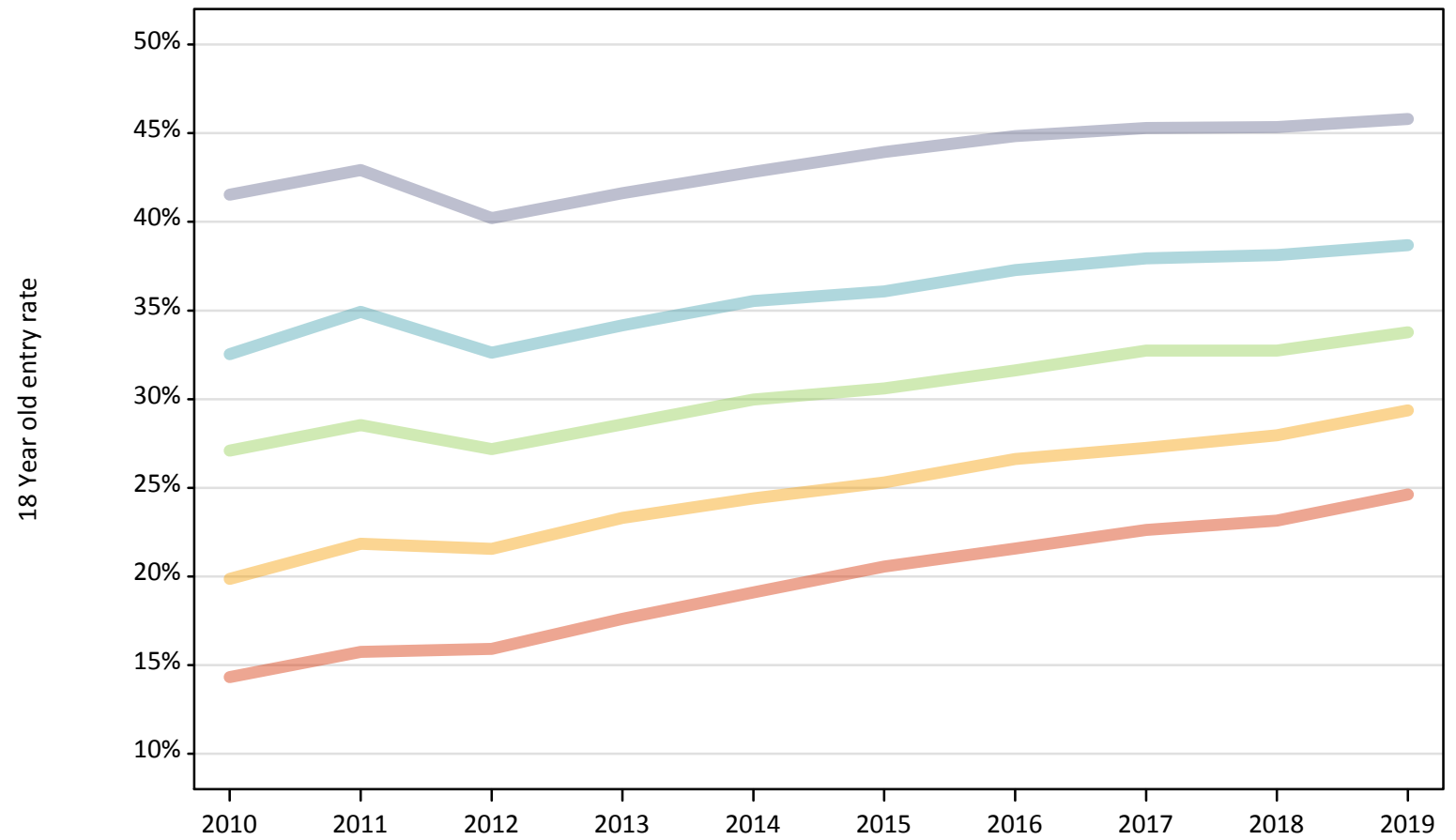
Applicant Status IMD2015		2010	2011	2012	2013	2014	2015	2016	2017	2018	2019
Placed	Quintile 1	-35%	-29%	-28%	-22%	-15%	-7%	-5%	-1%	0%	6%
	Quintile 2	-21%	-17%	-19%	-13%	-9%	-4%	-1%	0%	0%	3%
	Quintile 3	-10%	-7%	-11%	-8%	-5%	-0%	1%	3%	0%	1%
	Quintile 4	-7%	-3%	-8%	-6%	-4%	-0%	1%	2%	0%	-1%
	Quintile 5	-2%	-1%	-4%	-3%	-3%	1%	2%	3%	0%	-1%

Note: The percentage change is not recorded in the above table for groups with fewer than 10 placed applicants in that cycle or in the 2018 cycle.

### J.7 Placed 18 year old applicants from England by IMD2015 quintile: 14 days after A level results day

Placed 18 year old applicants: entry rate

- Quintile 1
- Quintile 2
- Quintile 3
- Quintile 4
- Quintile 5



**J.8 Placed 18 year old applicants from England by IMD2015 quintile: 14 days after A level results day**

Placed 18 year old applicants: entry rate

Applicant Status	IMD2015	2010	2011	2012	2013	2014	2015	2016	2017	2018	2019
Placed	Quintile 1	14.3%	15.7%	15.9%	17.6%	19.1%	20.6%	21.6%	22.6%	23.2%	24.6%
	Quintile 2	19.9%	21.8%	21.6%	23.3%	24.4%	25.3%	26.6%	27.2%	28.0%	29.4%
	Quintile 3	27.1%	28.5%	27.2%	28.6%	30.0%	30.6%	31.6%	32.7%	32.7%	33.8%
	Quintile 4	32.5%	34.9%	32.6%	34.2%	35.5%	36.1%	37.3%	37.9%	38.1%	38.7%
	Quintile 5	41.5%	42.9%	40.2%	41.6%	42.8%	43.9%	44.8%	45.3%	45.3%	45.8%

**J.9 Placed 18 year old applicants from England by IMD2015 quintile: 14 days after A level results day**

Placed 18 year old applicants: entry rate (indexed to 100 = Quintile 1)

Applicant Status	IMD2015	2010	2011	2012	2013	2014	2015	2016	2017	2018	2019
Placed	Quintile 1	100	100	100	100	100	100	100	100	100	100
	Quintile 2	139	139	135	132	128	123	123	120	121	119
	Quintile 3	189	181	171	162	157	149	147	145	141	137
	Quintile 4	227	222	205	194	186	176	173	168	165	157
	Quintile 5	290	273	253	236	224	214	208	200	196	186