

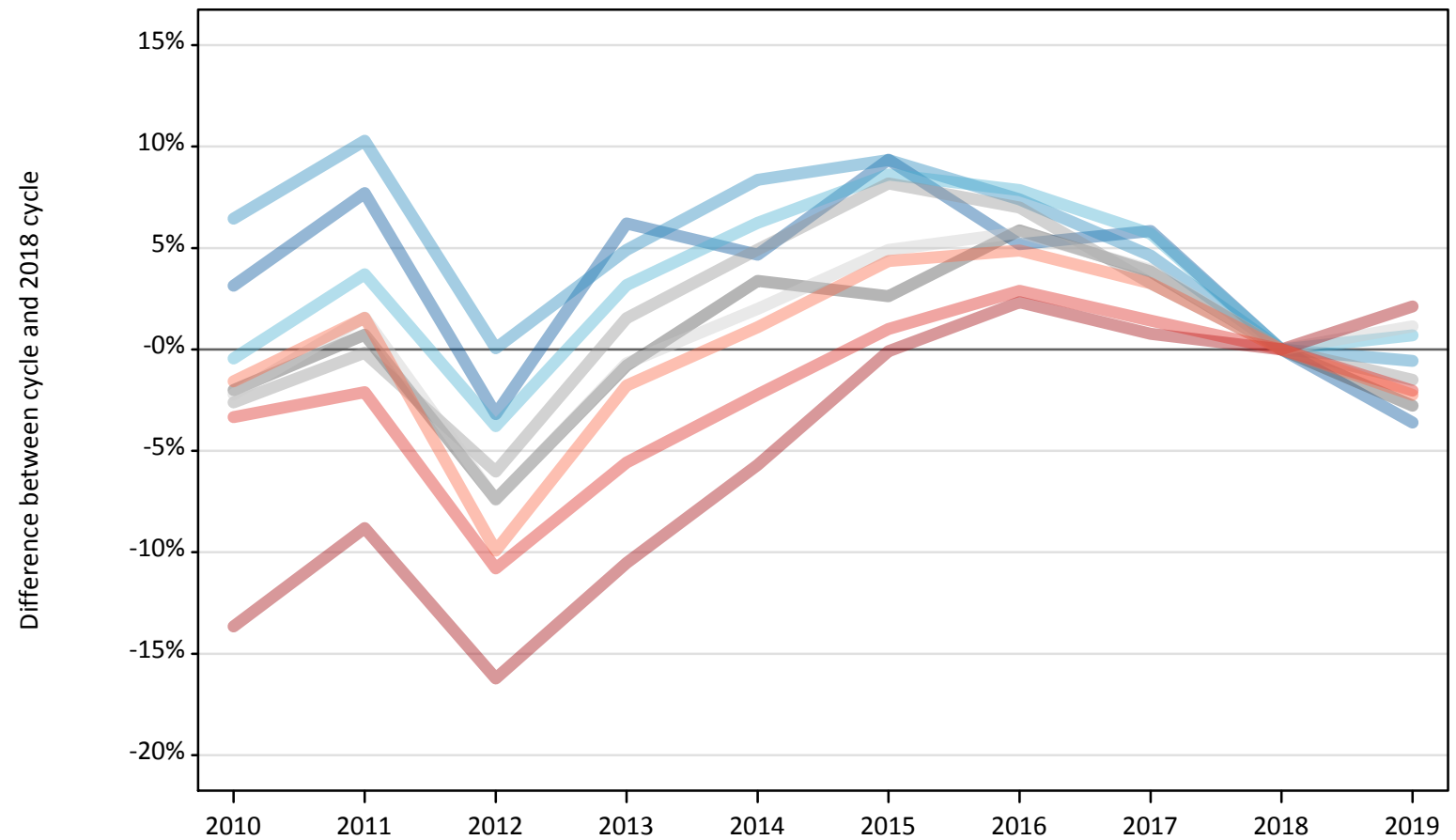
Daily Clearing Analysis: Region

Analysis at 00:05 on Thursday 29 August 2019 (14 days after A level results day)

R.1 Placed applicants by region of domicile: 14 days after A level results day

Placed applicants: change relative to 2018 cycle totals

- North East
- North West
- Yorkshire and The Humber
- East Midlands
- West Midlands
- East of England
- London
- South East
- South West



Note: The percentage change is not plotted in the above chart for groups with fewer than 30 placed applicants in any one cycle.

R.2 Placed applicants by region of domicile: 14 days after A level results day

Applicant Status	Domicile	2010	2011	2012	2013	2014	2015	2016	2017	2018	2019
Placed	North East	15,010	15,670	14,080	15,450	15,230	15,910	15,300	15,400	14,550	14,020
	North West	47,200	48,900	44,370	46,520	48,050	48,480	47,620	46,390	44,340	44,090
	Yorkshire and The Humber	30,800	32,090	29,770	31,920	32,870	33,610	33,370	32,700	30,940	31,160
	East Midlands	26,350	27,080	24,910	26,670	27,800	27,590	28,470	27,920	26,890	26,150
	West Midlands	35,160	36,040	33,930	36,660	37,880	39,060	38,630	37,280	36,100	35,570
	East of England	35,110	36,460	33,240	35,660	36,620	37,660	37,970	37,310	35,900	36,310
	London	60,540	63,940	58,740	62,730	66,120	70,050	71,740	70,660	70,110	71,600
	South East	56,280	57,000	51,940	54,980	56,930	58,810	59,910	59,050	58,220	57,040
	South West	31,700	32,710	29,010	31,630	32,560	33,610	33,780	33,250	32,210	31,480
	(England total)	338,140	349,890	319,990	342,220	354,040	364,780	366,780	359,970	349,260	347,400
	Scotland	28,660	28,100	28,170	28,640	29,340	32,150	33,450	34,170	34,620	33,460
	Northern Ireland	13,460	13,600	12,830	14,210	14,200	13,870	14,650	14,200	13,850	13,520
	Wales	17,340	17,220	17,790	17,970	18,750	19,160	19,320	18,830	18,420	18,120
	UK	397,600	408,800	378,770	403,040	416,330	429,970	434,200	427,160	416,150	412,490

R.3 Placed applicants by region of domicile: 14 days after A level results day

Placed applicants: change relative to 2018 cycle totals

Applicant Status	Domicile	2010	2011	2012	2013	2014	2015	2016	2017	2018	2019
Placed	North East	3%	8%	-3%	6%	5%	9%	5%	6%	0%	-4%
	North West	6%	10%	0%	5%	8%	9%	7%	5%	0%	-1%
	Yorkshire and The Humber	-0%	4%	-4%	3%	6%	9%	8%	6%	0%	1%
	East Midlands	-2%	1%	-7%	-1%	3%	3%	6%	4%	0%	-3%
	West Midlands	-3%	-0%	-6%	2%	5%	8%	7%	3%	0%	-1%
	East of England	-2%	2%	-7%	-1%	2%	5%	6%	4%	0%	1%
	London	-14%	-9%	-16%	-11%	-6%	-0%	2%	1%	0%	2%
	South East	-3%	-2%	-11%	-6%	-2%	1%	3%	1%	0%	-2%
	South West	-2%	2%	-10%	-2%	1%	4%	5%	3%	0%	-2%
	(England total)	-3%	0%	-8%	-2%	1%	4%	5%	3%	0%	-1%
	Scotland	-17%	-19%	-19%	-17%	-15%	-7%	-3%	-1%	0%	-3%
	Northern Ireland	-3%	-2%	-7%	3%	2%	0%	6%	3%	0%	-2%
	Wales	-6%	-7%	-3%	-2%	2%	4%	5%	2%	0%	-2%
	UK	-4%	-2%	-9%	-3%	0%	3%	4%	3%	0%	-1%

Note: The percentage change is not recorded in the above table for groups with fewer than 10 placed applicants in that cycle or in the 2018 cycle.

R.4 Placed applicants by region of domicile: 14 days after A level results day

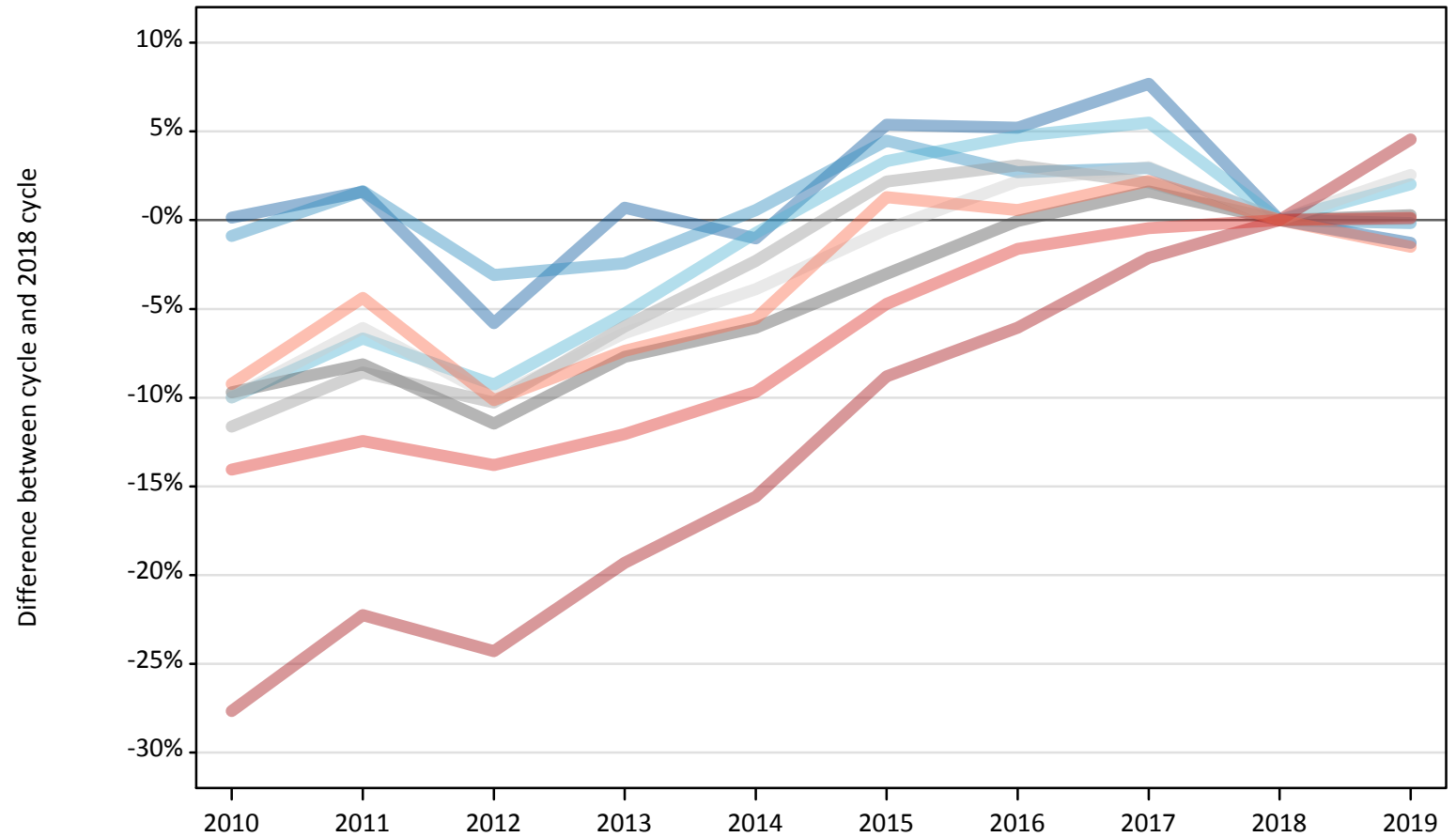
Placed applicants: absolute change relative to 2018 cycle totals

Applicant Status	Domicile	2010	2011	2012	2013	2014	2015	2016	2017	2018	2019
Placed	North East	460	1,120	-460	900	680	1,360	750	850	0	-520
	North West	2,860	4,560	30	2,180	3,710	4,140	3,280	2,050	0	-250
	Yorkshire and The Humber	-140	1,150	-1,170	980	1,930	2,670	2,430	1,770	0	220
	East Midlands	-540	190	-1,980	-220	910	710	1,580	1,030	0	-740
	West Midlands	-940	-60	-2,170	560	1,780	2,960	2,530	1,180	0	-540
	East of England	-790	570	-2,660	-240	720	1,760	2,070	1,410	0	410
	London	-9,580	-6,180	-11,370	-7,380	-4,000	-60	1,630	540	0	1,480
	South East	-1,940	-1,220	-6,280	-3,240	-1,300	590	1,690	830	0	-1,190
	South West	-500	500	-3,190	-570	350	1,400	1,570	1,050	0	-720
	(England total)	-11,120	630	-29,270	-7,030	4,780	15,520	17,520	10,710	0	-1,850
	Scotland	-5,970	-6,530	-6,450	-5,990	-5,280	-2,470	-1,180	-460	0	-1,170
	Northern Ireland	-390	-250	-1,020	360	350	20	800	350	0	-340
	Wales	-1,080	-1,200	-630	-450	330	740	910	410	0	-300
	UK	-18,550	-7,350	-37,380	-13,110	180	13,820	18,050	11,010	0	-3,660

R.5 Placed 18 year old applicants by region of domicile: 14 days after A level results day

Placed 18 year old applicants: change relative to 2018 cycle totals

- North East
- North West
- Yorkshire and The Humber
- East Midlands
- West Midlands
- East of England
- London
- South East
- South West



Note: The percentage change is not plotted in the above chart for groups with fewer than 30 placed applicants in any one cycle.

R.6 Placed 18 year old applicants by region of domicile: 14 days after A level results day

Applicant Status	Domicile	2010	2011	2012	2013	2014	2015	2016	2017	2018	2019
Placed	North East	8,050	8,170	7,570	8,090	7,960	8,470	8,460	8,660	8,040	7,930
	North West	25,840	26,500	25,270	25,450	26,220	27,250	26,780	26,840	26,080	26,040
	Yorkshire and The Humber	16,410	17,020	16,550	17,270	18,100	18,840	19,100	19,240	18,230	18,600
	East Midlands	14,500	14,750	14,220	14,820	15,080	15,570	16,050	16,320	16,060	16,100
	West Midlands	18,360	18,990	18,640	19,530	20,300	21,230	21,420	21,220	20,770	20,790
	East of England	20,100	20,970	20,100	20,910	21,460	22,220	22,820	23,000	22,330	22,900
	London	28,090	30,190	29,410	31,340	32,780	35,420	36,490	38,010	38,840	40,600
	South East	30,580	31,160	30,680	31,300	32,140	33,910	35,010	35,430	35,590	35,630
	South West	15,630	16,460	15,470	15,950	16,260	17,440	17,310	17,600	17,220	16,960
	(England total)	177,560	184,210	177,900	184,650	190,300	200,330	203,430	206,300	203,150	205,550
	Scotland	14,770	14,000	14,060	14,150	14,320	14,420	14,640	14,640	14,610	14,040
	Northern Ireland	8,840	8,600	8,260	8,760	8,530	8,410	8,560	8,480	8,190	7,970
	Wales	9,780	9,430	9,730	9,660	10,040	10,500	10,600	10,270	10,120	9,890
	UK	210,960	216,240	209,950	217,210	223,190	233,660	237,230	239,700	236,070	237,450

R.7 Placed 18 year old applicants by region of domicile: 14 days after A level results day

Placed 18 year old applicants: change relative to 2018 cycle totals

Applicant Status	Domicile	2010	2011	2012	2013	2014	2015	2016	2017	2018	2019
Placed	North East	0%	2%	-6%	1%	-1%	5%	5%	8%	0%	-1%
	North West	-1%	2%	-3%	-2%	1%	4%	3%	3%	0%	-0%
	Yorkshire and The Humber	-10%	-7%	-9%	-5%	-1%	3%	5%	6%	0%	2%
	East Midlands	-10%	-8%	-11%	-8%	-6%	-3%	-0%	2%	0%	0%
	West Midlands	-12%	-9%	-10%	-6%	-2%	2%	3%	2%	0%	0%
	East of England	-10%	-6%	-10%	-6%	-4%	-1%	2%	3%	0%	3%
	London	-28%	-22%	-24%	-19%	-16%	-9%	-6%	-2%	0%	5%
	South East	-14%	-12%	-14%	-12%	-10%	-5%	-2%	-0%	0%	0%
	South West	-9%	-4%	-10%	-7%	-6%	1%	1%	2%	0%	-2%
	(England total)	-13%	-9%	-12%	-9%	-6%	-1%	0%	2%	0%	1%
	Scotland	1%	-4%	-4%	-3%	-2%	-1%	0%	0%	0%	-4%
	Northern Ireland	8%	5%	1%	7%	4%	3%	5%	4%	0%	-3%
	Wales	-3%	-7%	-4%	-5%	-1%	4%	5%	2%	0%	-2%
	UK	-11%	-8%	-11%	-8%	-5%	-1%	0%	2%	0%	1%

Note: The percentage change is not recorded in the above table for groups with fewer than 10 placed applicants in that cycle or in the 2018 cycle.

R.8 Placed 18 year old applicants by region of domicile: 14 days after A level results day

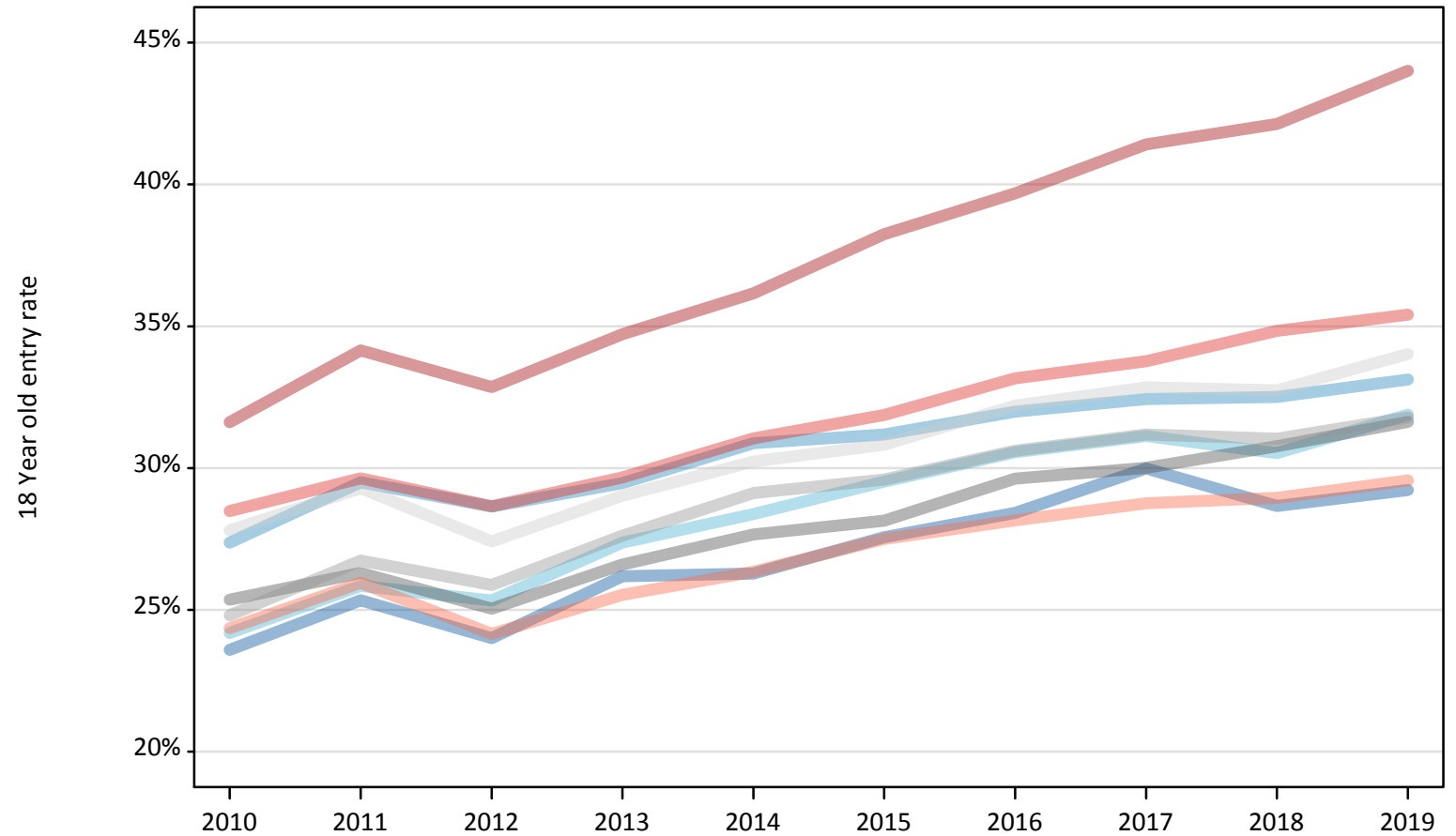
Placed 18 year old applicants: absolute change relative to 2018 cycle totals

Applicant Status	Domicile	2010	2011	2012	2013	2014	2015	2016	2017	2018	2019
Placed	North East	10	130	-470	60	-80	430	420	620	0	-100
	North West	-230	420	-810	-630	150	1,170	710	770	0	-40
	Yorkshire and The Humber	-1,820	-1,220	-1,690	-960	-130	610	860	1,000	0	370
	East Midlands	-1,560	-1,310	-1,840	-1,240	-970	-490	-10	260	0	40
	West Midlands	-2,420	-1,780	-2,140	-1,250	-480	450	640	440	0	10
	East of England	-2,230	-1,360	-2,230	-1,420	-870	-110	490	670	0	570
	London	-10,750	-8,650	-9,430	-7,500	-6,050	-3,420	-2,350	-830	0	1,770
	South East	-5,000	-4,430	-4,910	-4,290	-3,450	-1,680	-580	-160	0	50
	South West	-1,590	-760	-1,750	-1,270	-960	220	100	380	0	-260
	(England total)	-25,590	-18,940	-25,250	-18,500	-12,850	-2,820	280	3,150	0	2,400
	Scotland	160	-610	-550	-460	-290	-190	30	40	0	-570
	Northern Ireland	650	410	70	570	340	220	370	290	0	-220
	Wales	-330	-690	-390	-460	-70	390	490	150	0	-230
	UK	-25,110	-19,820	-26,120	-18,850	-12,870	-2,400	1,170	3,630	0	1,390

R.9 Placed 18 year old applicants by region of domicile: 14 days after A level results day

Placed 18 year old applicants: entry rate

- North East
- North West
- Yorkshire and The Humber
- East Midlands
- West Midlands
- East of England
- London
- South East
- South West



R.10 Placed 18 year old applicants by region of domicile: 14 days after A level results day

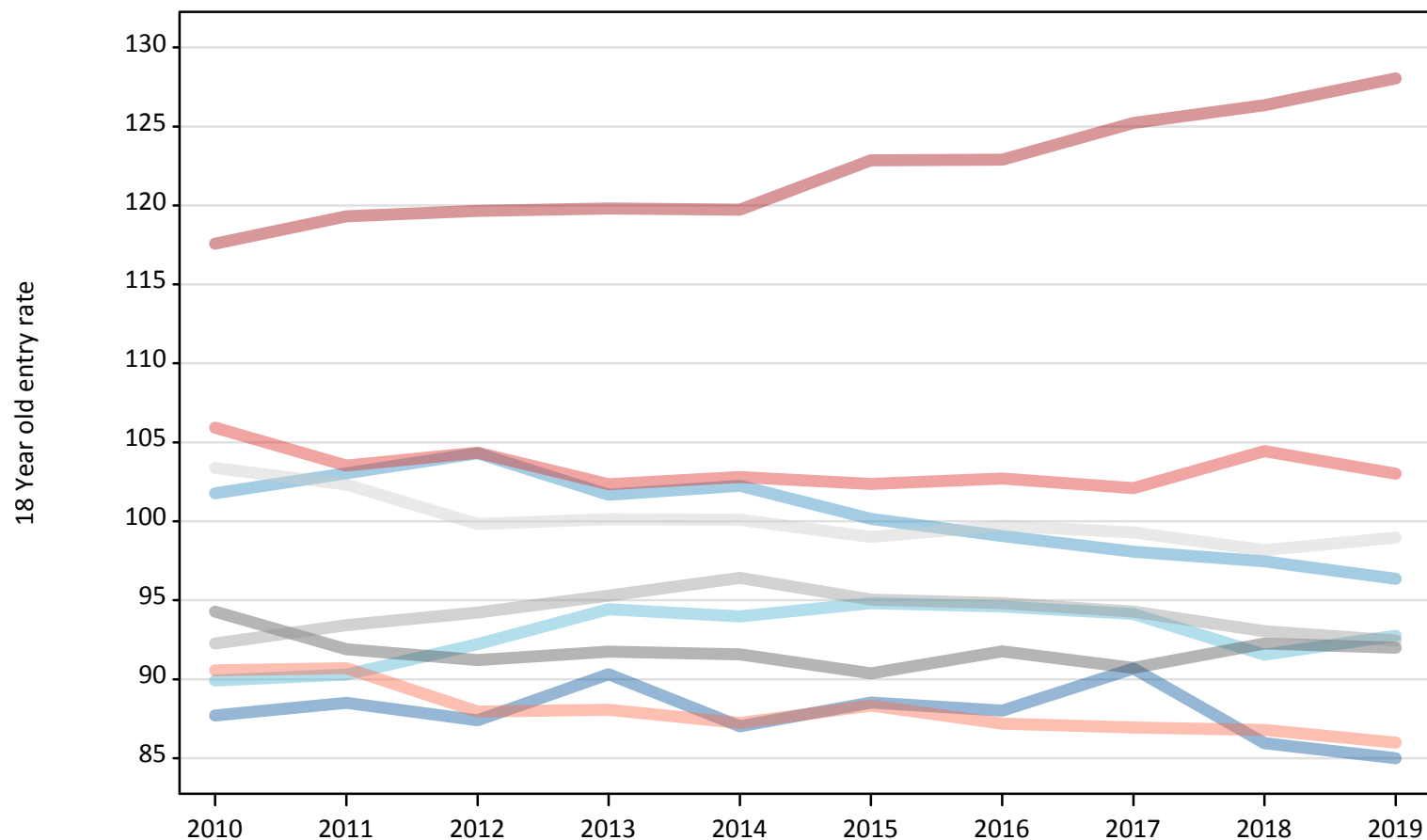
Placed 18 year old applicants: entry rate

Applicant Status	Domicile	2010	2011	2012	2013	2014	2015	2016	2017	2018	2019
Placed	North East	23.6%	25.3%	24.0%	26.2%	26.3%	27.6%	28.4%	30.0%	28.7%	29.2%
	North West	27.4%	29.5%	28.6%	29.5%	30.9%	31.2%	32.0%	32.4%	32.5%	33.1%
	Yorkshire and The Humber	24.2%	25.8%	25.3%	27.4%	28.4%	29.5%	30.6%	31.1%	30.5%	31.9%
	East Midlands	25.4%	26.3%	25.0%	26.6%	27.7%	28.1%	29.6%	30.0%	30.8%	31.6%
	West Midlands	24.8%	26.7%	25.9%	27.6%	29.1%	29.6%	30.6%	31.2%	31.0%	31.8%
	East of England	27.8%	29.3%	27.4%	29.0%	30.2%	30.8%	32.2%	32.8%	32.7%	34.0%
	London	31.6%	34.1%	32.9%	34.7%	36.2%	38.2%	39.7%	41.4%	42.1%	44.0%
	South East	28.5%	29.6%	28.7%	29.7%	31.0%	31.9%	33.2%	33.8%	34.8%	35.4%
	South West	24.4%	26.0%	24.1%	25.5%	26.3%	27.5%	28.2%	28.8%	28.9%	29.6%
	(England total)	26.9%	28.6%	27.5%	29.0%	30.2%	31.1%	32.3%	33.1%	33.3%	34.4%
	Scotland	23.1%	22.3%	22.7%	23.0%	23.4%	24.0%	24.9%	25.5%	26.3%	26.1%
	Northern Ireland	34.7%	34.4%	32.9%	35.7%	35.2%	33.9%	35.0%	35.0%	35.3%	35.6%
	Wales	24.5%	24.4%	25.2%	25.5%	26.8%	27.9%	29.2%	28.9%	29.4%	29.4%
	UK	26.7%	28.1%	27.1%	28.5%	29.6%	30.5%	31.6%	32.4%	32.7%	33.5%

R.11 Placed 18 year old applicants by region of domicile: 14 days after A level results day

Placed 18 year old applicants: entry rates (indexed to 100 = England)

- North East
- North West
- Yorkshire and The Humber
- East Midlands
- West Midlands
- East of England
- London
- South East
- South West



R.12 Placed 18 year old applicants by region of domicile: 14 days after A level results day

Placed 18 year old applicants: entry rate (indexed to 100 = England)

Applicant Status	Domicile	2010	2011	2012	2013	2014	2015	2016	2017	2018	2019
Placed	North East	88	89	87	90	87	89	88	91	86	85
	North West	102	103	104	102	102	100	99	98	97	96
	Yorkshire and The Humber	90	90	92	94	94	95	95	94	92	93
	East Midlands	94	92	91	92	92	90	92	91	92	92
	West Midlands	92	93	94	95	96	95	95	94	93	92
	East of England	103	102	100	100	100	99	100	99	98	99
	London	118	119	120	120	120	123	123	125	126	128
	South East	106	104	104	102	103	102	103	102	104	103
	South West	91	91	88	88	87	88	87	87	87	86
	(England total)	100	100	100	100	100	100	100	100	100	100