

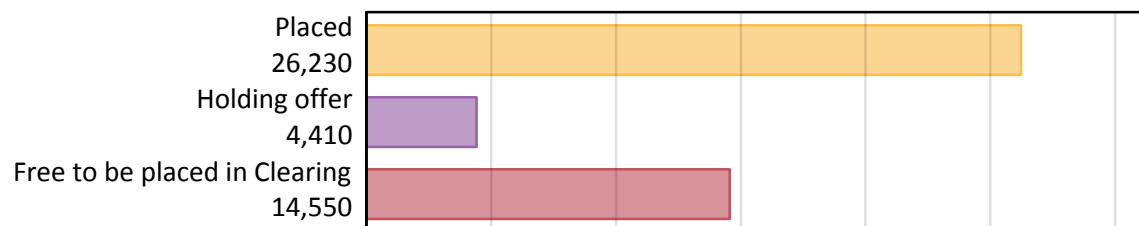
Daily Clearing Analysis: Overview

B7 Nursing analysis at 00:05 on Thursday 29 August 2019 (14 days after A level results day)

AB.1 Placed applicants to nursing from all domiciles, 2019 cycle

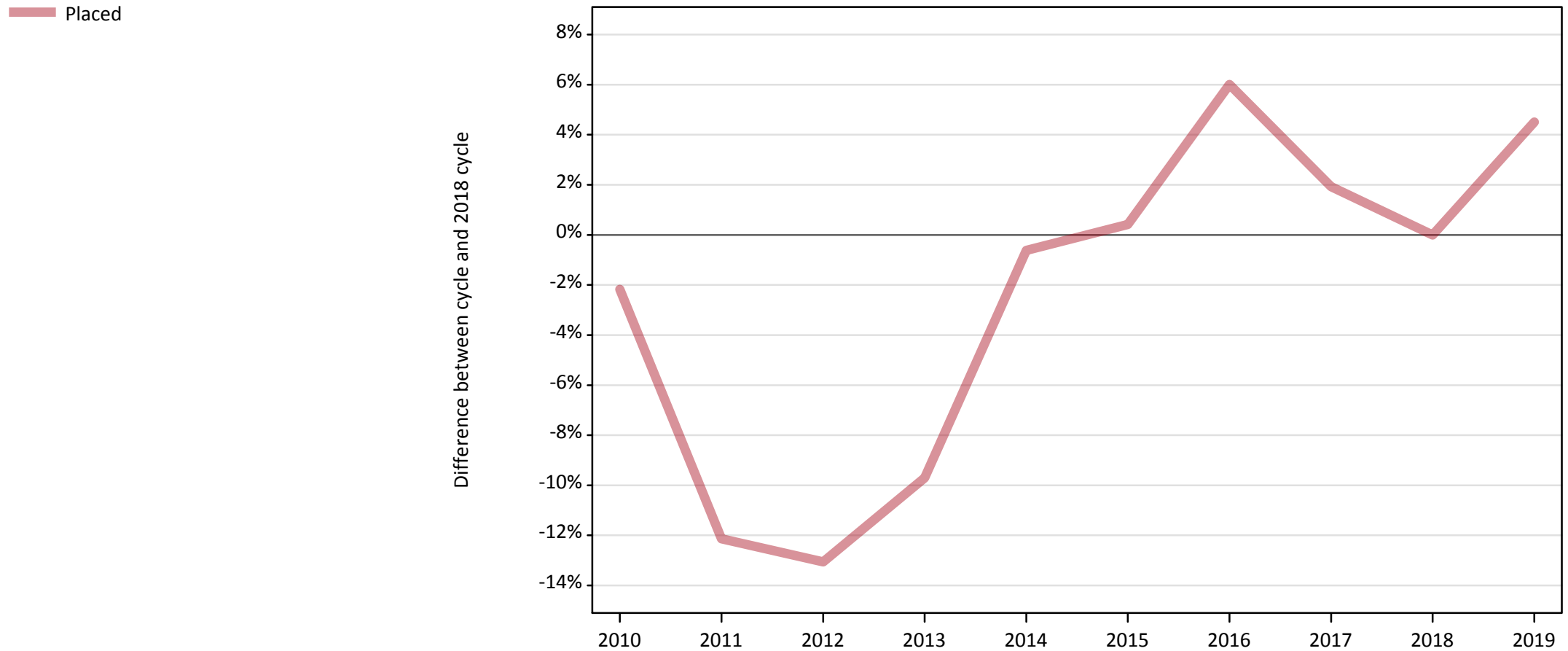
Applicant type	Status	2019
Main scheme	Placed (Clearing)	1,480
	Placed (Adjustment)	10
	Placed (Firm)	22,510
	Placed (Insurance)	550
	Placed (Other)	1,200
	Holding offer	4,410
	Free to be placed in Clearing	14,550
Direct to Clearing	Placed (Direct to Clearing)	480
	Other (Direct to Clearing)	490
All applicants	Placed	26,230

AB.2 Summary of nursing applicants who are placed, holding offers or free to be placed in Clearing (all domiciles)



AB.3 Placed applicants to nursing from all domiciles: 14 days after A level results day

Placed applicants to nursing: difference between cycle and 2018 cycle



Note: The percentage change is not plotted in the above chart for groups with fewer than 30 placed applicants in any one cycle.

AB.4 Placed applicants to nursing from all domiciles: 14 days after A level results day

Placed applicants to nursing: applicants at 14 days after A level results day

Applicant type	Status	2010	2011	2012	2013	2014	2015	2016	2017	2018	2019
All applicants	Placed	24,550	22,050	21,820	22,660	24,940	25,200	26,600	25,580	25,100	26,230

AB.5 Placed applicants to nursing from all domiciles: 14 days after A level results day

Placed applicants to nursing: difference between cycle and 2018 cycle

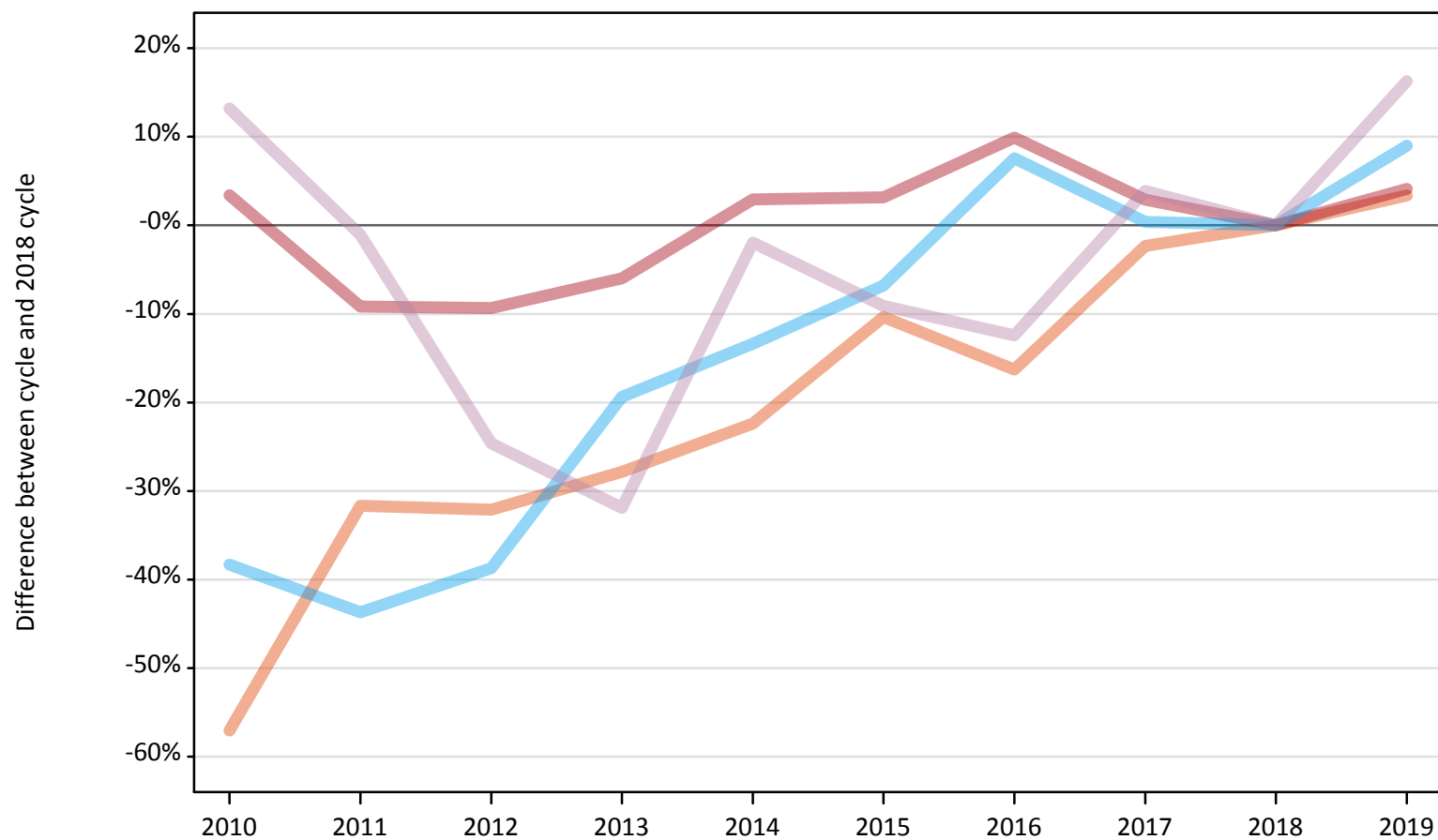
Applicant type	Status	2010	2011	2012	2013	2014	2015	2016	2017	2018	2019
All applicants	Placed	-2%	-12%	-13%	-10%	-1%	0%	6%	2%	0%	5%

Note: The percentage change is not recorded in the above table for groups with fewer than 10 placed applicants in that cycle or in the 2018 cycle.

AB.6 Placed main scheme applicants to nursing from all domiciles: 14 days after A level results day

All Main scheme placed routes (excluding Adjustment): difference between cycle and 2018 cycle

- Placed (Clearing)
- Placed (Firm)
- Placed (Insurance)
- Placed (Other)



Note: The percentage change is not plotted in the above chart for groups with fewer than 30 placed applicants in any one cycle.

AB.7 Placed main scheme applicants to nursing from all domiciles: 14 days after A level results day

All Main scheme placed routes (excluding Adjustment): applicants at 14 days after A level results day

Applicant type	Status	2010	2011	2012	2013	2014	2015	2016	2017	2018	2019
Main scheme	Placed (Clearing)	610	980	970	1,030	1,110	1,280	1,200	1,400	1,430	1,480
	Placed (Firm)	22,360	19,640	19,610	20,330	22,260	22,310	23,760	22,240	21,620	22,510
	Placed (Insurance)	310	280	310	400	430	470	540	500	500	550
	Placed (Other)	1,170	1,020	780	700	1,010	940	900	1,070	1,030	1,200

AB.8 Placed main scheme applicants to nursing from all domiciles: 14 days after A level results day

All Main scheme placed routes (excluding Adjustment): difference between cycle and 2018 cycle

Applicant type	Status	2010	2011	2012	2013	2014	2015	2016	2017	2018	2019
Main scheme	Placed (Clearing)	-57%	-32%	-32%	-28%	-22%	-10%	-16%	-2%	0%	3%
	Placed (Firm)	3%	-9%	-9%	-6%	3%	3%	10%	3%	0%	4%
	Placed (Insurance)	-38%	-44%	-39%	-19%	-13%	-7%	8%	0%	0%	9%
	Placed (Other)	13%	-1%	-25%	-32%	-2%	-9%	-12%	4%	0%	16%

Note: The percentage change is not recorded in the above table for groups with fewer than 10 placed applicants in that cycle or in the 2018 cycle.

AB.9 Main scheme applicants placed to nursing through adjustment: 14 days after A level results day

Placed through adjustment: difference between cycle and 2018 cycle

[This chart is not part of this report]

AB.10 Main scheme applicants placed to nursing through adjustment: 14 days after A level results day

Placed through adjustment: applicants at 14 days after A level results day

Applicant type	Status	2010	2011	2012	2013	2014	2015	2016	2017	2018	2019
Main scheme	Placed (Adjustment)	0	0	0	10	10	10	0	20	10	10

AB.11 Main scheme applicants placed to nursing through adjustment: 14 days after A level results day

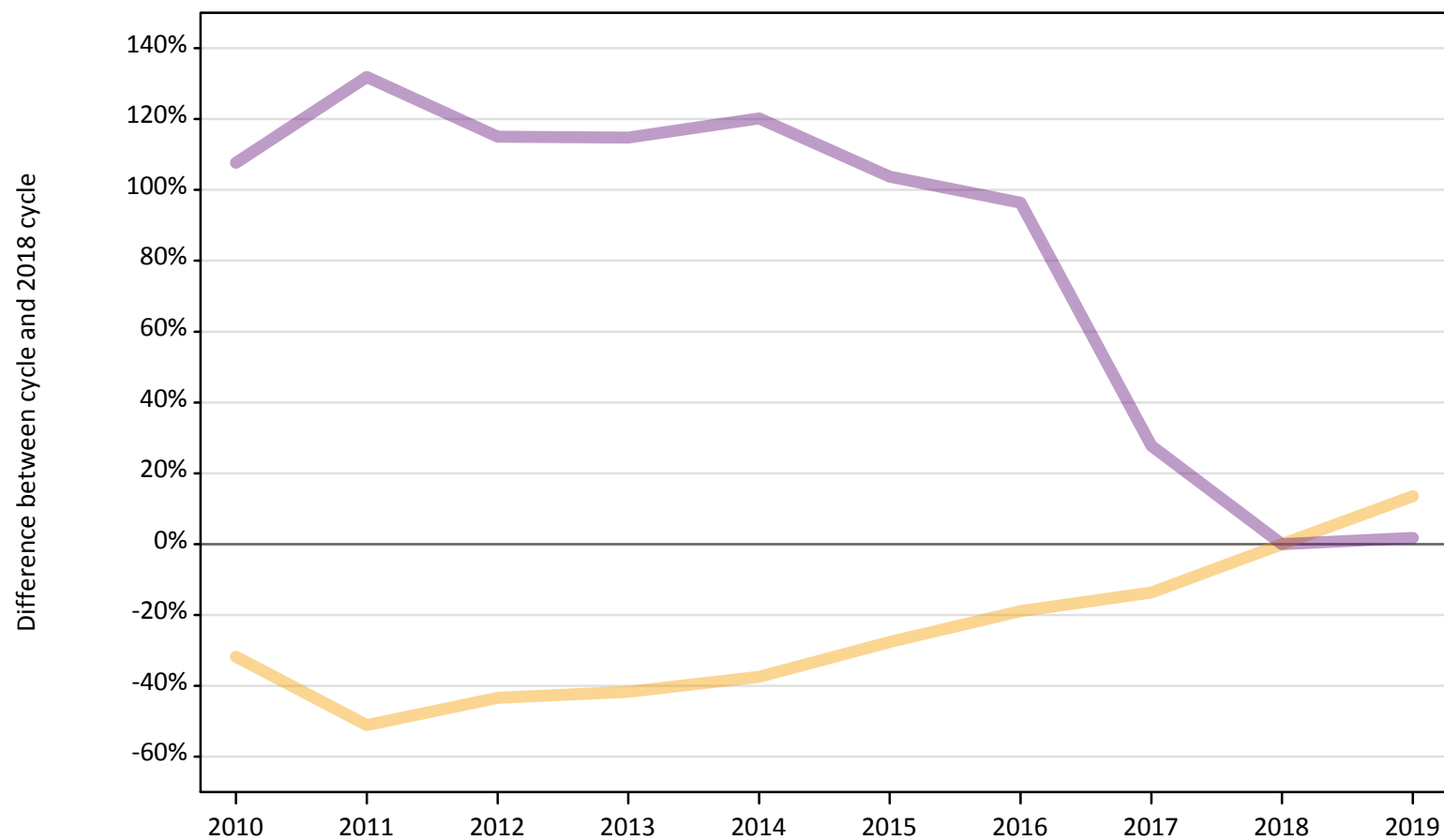
Placed through adjustment: difference between cycle and 2018 cycle

[This table is not part of this report]

AB.12 Main scheme applicants to nursing not currently placed from all domiciles: 14 days after A level results day

Applicants in unplaced states: difference between cycle and 2018 cycle

— Holding offer
— Free to be placed in Clearing



Note: The percentage change is not plotted in the above chart for groups with fewer than 30 unplaced applicants in any one cycle.

AB.13 Main scheme applicants to nursing not currently placed from all domiciles: 14 days after A level results day

Applicants in unplaced states: applicants at 14 days after A level results day

Applicant type	Status	2010	2011	2012	2013	2014	2015	2016	2017	2018	2019
Main scheme	Holding offer	2,650	1,900	2,200	2,270	2,430	2,820	3,150	3,360	3,890	4,410
	Free to be placed in Clearing	29,700	33,160	30,750	30,720	31,480	29,130	28,080	18,270	14,300	14,550

AB.14 Main scheme applicants to nursing not currently placed from all domiciles: 14 days after A level results day

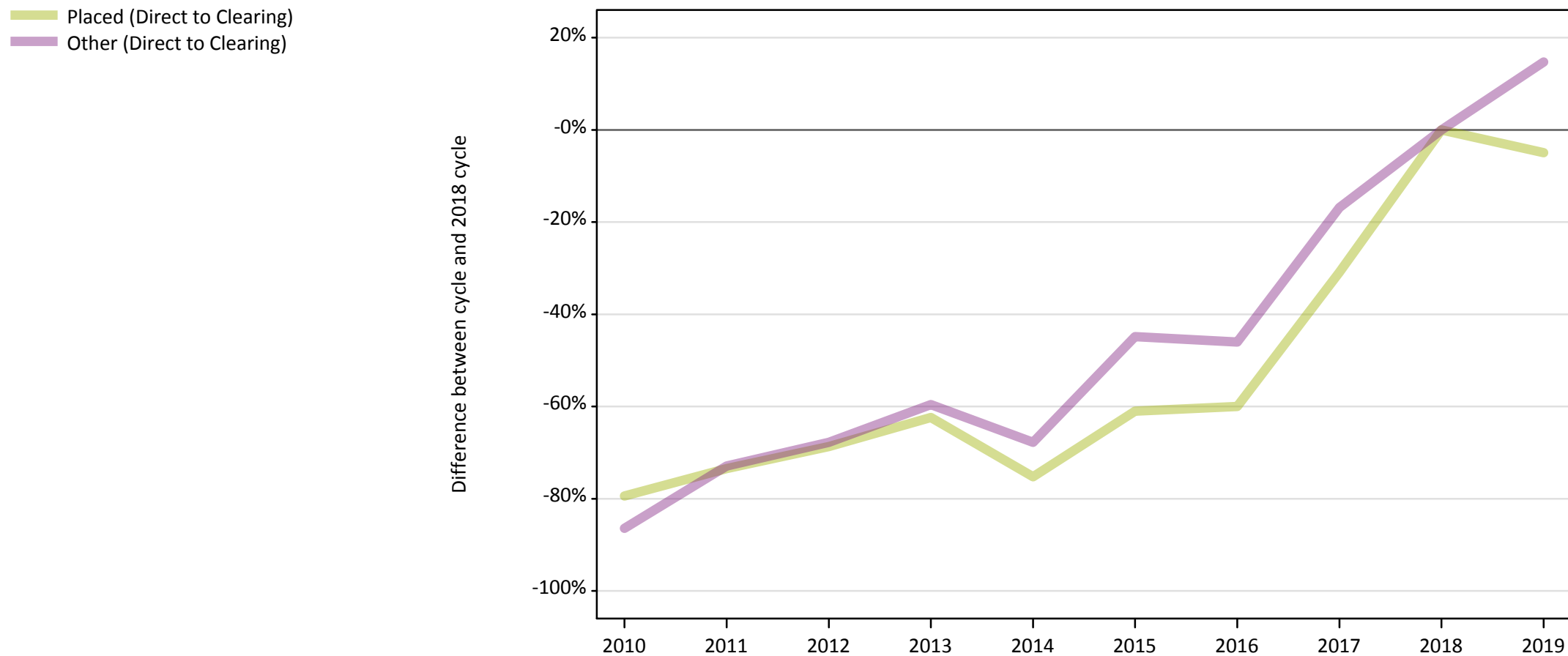
Applicants in unplaced states: difference between cycle and 2018 cycle

Applicant type	Status	2010	2011	2012	2013	2014	2015	2016	2017	2018	2019
Main scheme	Holding offer	-32%	-51%	-43%	-42%	-37%	-28%	-19%	-14%	0%	13%
	Free to be placed in Clearing	108%	132%	115%	115%	120%	104%	96%	28%	0%	2%

Note: The percentage change is not recorded in the above table for groups with fewer than 10 unplaced applicants in that cycle or in the 2018 cycle.

AB.15 Direct to Clearing applicants from all domiciles: 14 days after A level results day

Direct to Clearing: difference between cycle and 2018 cycle



Note: The percentage change is not plotted in the above chart for groups with fewer than 30 placed applicants in any one cycle.

AB.16 Direct to Clearing applicants from all domiciles: 14 days after A level results day

Direct to Clearing 14 days after A level results day

Applicant type	Status	2010	2011	2012	2013	2014	2015	2016	2017	2018	2019
Direct to Clearing	Placed (Direct to Clearing)	100	130	160	190	130	200	200	350	510	480
	Other (Direct to Clearing)	60	120	140	170	140	240	230	360	430	490

AB.17 Direct to Clearing applicants from all domiciles: 14 days after A level results day

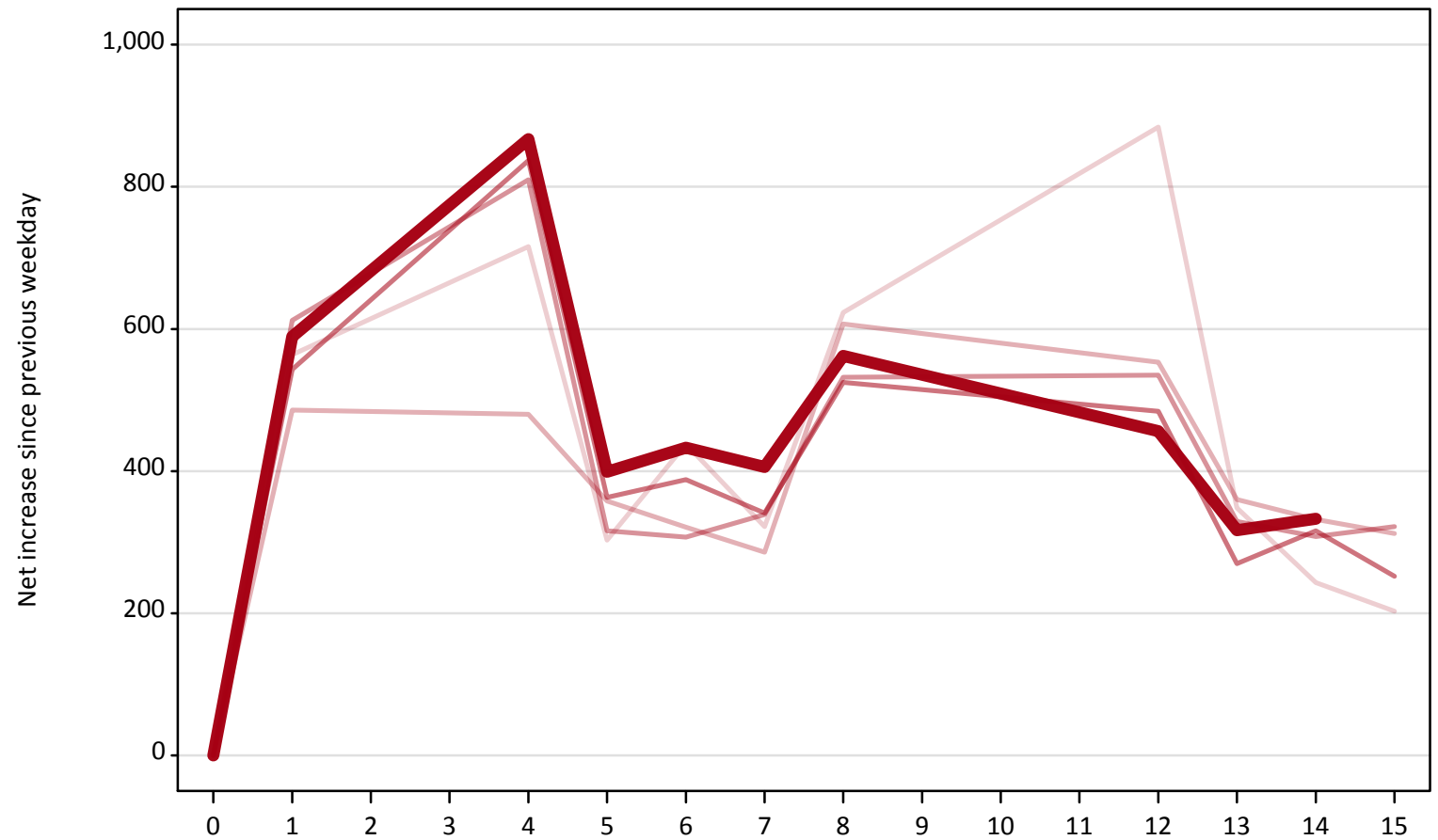
Direct to Clearing: difference between cycle and 2018 cycle

Applicant type	Status	2010	2011	2012	2013	2014	2015	2016	2017	2018	2019
Direct to Clearing	Placed (Direct to Clearing)	-79%	-73%	-69%	-62%	-75%	-61%	-60%	-31%	0%	-5%
	Other (Direct to Clearing)	-86%	-73%	-68%	-60%	-68%	-45%	-46%	-17%	0%	15%

Note: The percentage change is not recorded in the above table for groups with fewer than 10 placed applicants in that cycle or in the 2018 cycle.

AB.18 All Placed: Daily net change (from all domiciles)
Net increase since previous weekday (2019 cycle up to 14 days after A level results day)

- 2015
- 2016
- 2017
- 2018
- 2019**



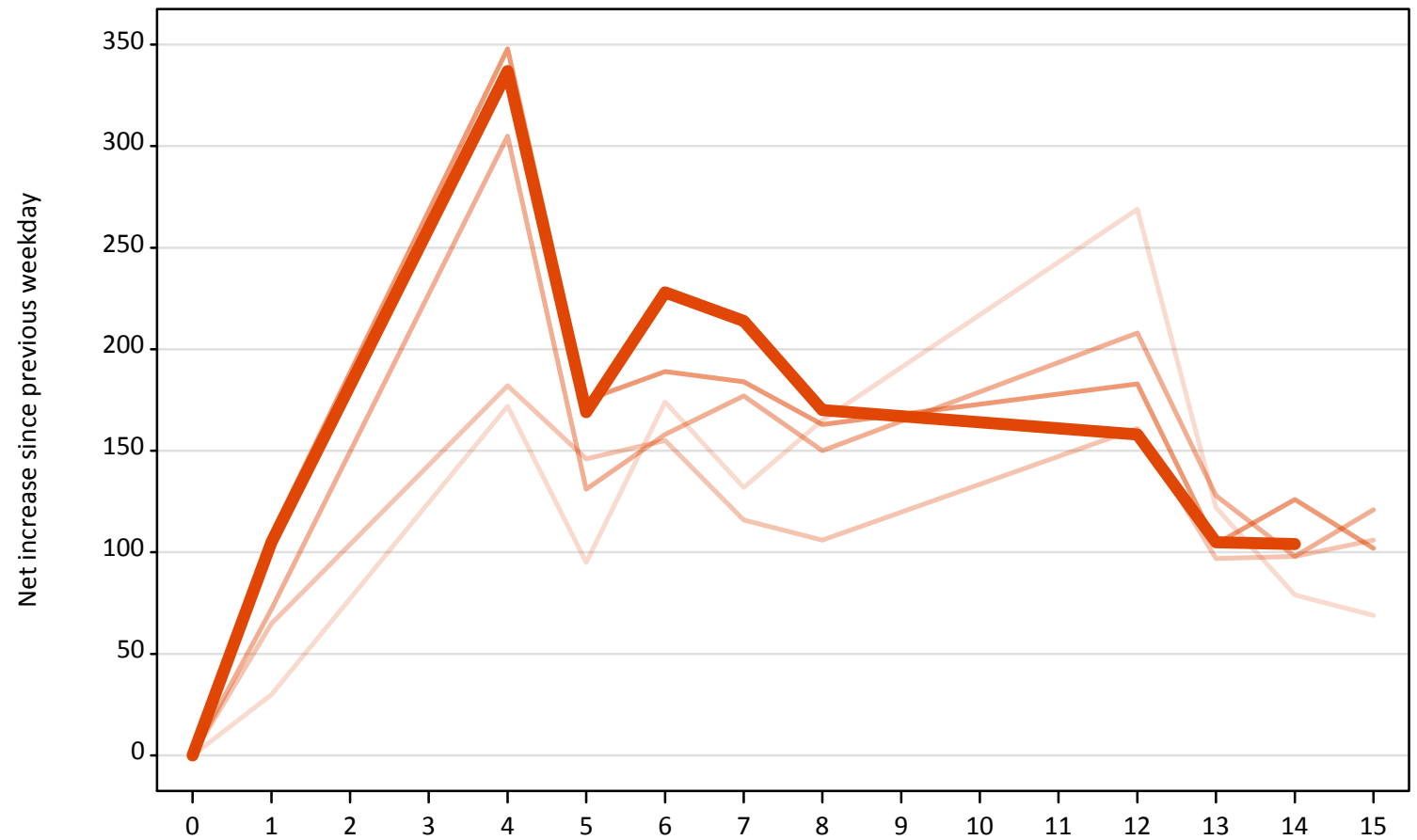
AB.19 All Placed: Daily net change (from all domiciles)

Net increase since previous weekday (2019 cycle up to 14 days after A level results day)

Applicant status, days since A level results day		2015	2016	2017	2018	2019
All Placed	0	0	0	0	0	0
	1	560	490	610	540	590
	4	720	480	810	840	870
	5	300	360	320	360	400
	6	440	320	310	390	430
	7	320	290	340	340	410
	8	620	610	530	530	560
	12	880	550	540	480	460
	13	350	360	330	270	320
	14	240	330	310	320	330
	15	200	310	320	250	

AB.20 Placed through Clearing only: Daily net change (from all domiciles)
Net increase since previous weekday (2019 cycle up to 14 days after A level results day)

- 2015
- 2016
- 2017
- 2018
- 2019**



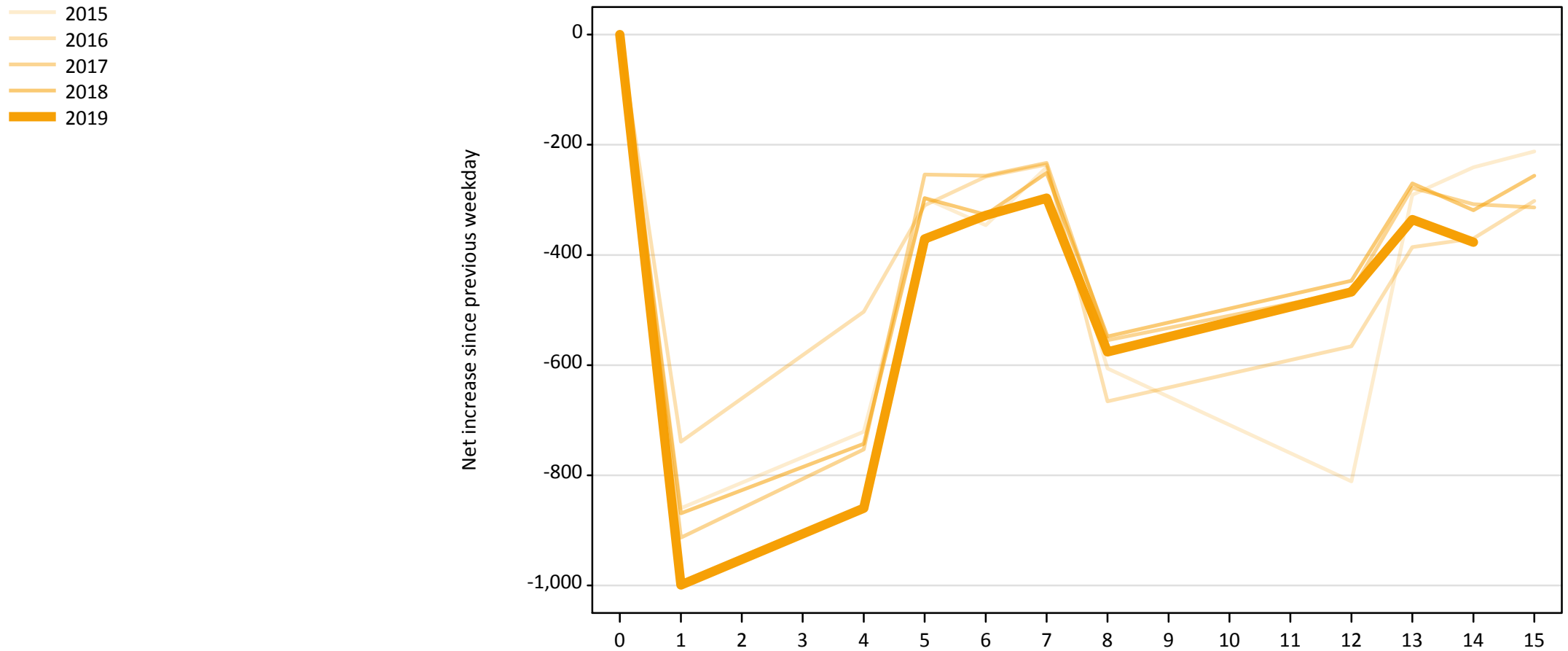
AB.21 Placed through Clearing only: Daily net change (from all domiciles)

Net increase since previous weekday (2019 cycle up to 14 days after A level results day)

Applicant status, days since A level results day		2015	2016	2017	2018	2019
Placed through Clearing only	0	0	0	0	0	0
	1	30	70	70	110	110
	4	170	180	310	350	340
	5	100	150	130	180	170
	6	170	160	160	190	230
	7	130	120	180	180	210
	8	170	110	150	160	170
	12	270	160	210	180	160
	13	120	100	130	100	110
	14	80	100	100	130	100
	15	70	110	120	100	

AB.22 Holding Offer: Daily net change (from all domiciles)

Net increase since previous weekday (2019 cycle up to 14 days after A level results day)



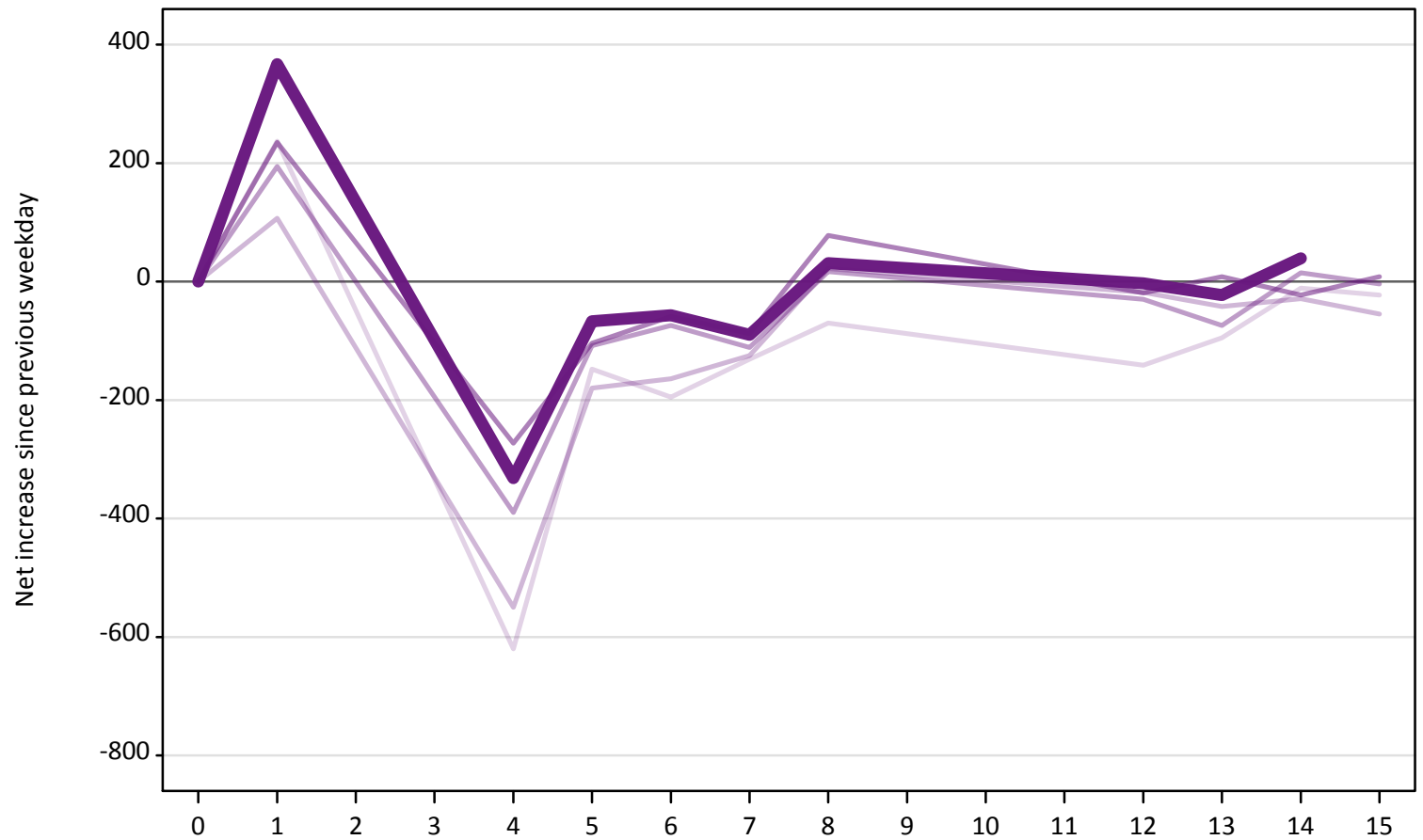
AB.23 Holding Offer: Daily net change (from all domiciles)

Net increase since previous weekday (2019 cycle up to 14 days after A level results day)

Applicant status, days since A level results day		2015	2016	2017	2018	2019
Holding Offer	0	0	0	0	0	0
	1	-860	-740	-910	-870	-1,000
	4	-720	-500	-750	-740	-860
	5	-300	-310	-250	-300	-370
	6	-350	-260	-260	-330	-330
	7	-240	-240	-230	-250	-300
	8	-610	-670	-560	-550	-580
	12	-810	-570	-470	-450	-470
	13	-290	-390	-280	-270	-340
	14	-240	-370	-310	-320	-380
	15	-210	-300	-310	-260	

AB.24 Free to be placed in Clearing: Daily net change (from all domiciles)
Net increase since previous weekday (2019 cycle up to 14 days after A level results day)

- 2015
- 2016
- 2017
- 2018
- 2019



AB.25 Free to be placed in Clearing: Daily net change (from all domiciles)

Net increase since previous weekday (2019 cycle up to 14 days after A level results day)

Applicant status, days since A level results day	2015	2016	2017	2018	2019	
Free to be placed in Clearing	0	0	0	0	0	
	1	240	110	190	240	370
	4	-620	-550	-390	-270	-330
	5	-150	-180	-110	-100	-70
	6	-200	-160	-70	-60	-60
	7	-130	-130	-110	-90	-90
	8	-70	20	20	80	30
	12	-140	-20	-30	-20	0
	13	-100	-40	-70	10	-20
	14	-10	-30	20	-20	40
	15	-20	-60	0	10	