

B7 Nursing analysis at 00:05 on Thursday 29 August 2019 (14 days after A level results day)

CB.1 Placed applicants to nursing by country of domicile and age group, 2019 cycle (14 days after A level results day)

Domicile of applicant	Age group				
	17 and under	18	19	20 to 24	25 and over
England	0	5,030	2,350	4,180	7,880
Northern Ireland	0	340	180	250	290
Scotland	30	690	350	770	1,600
Wales	0	350	240	410	710
UK	30	6,410	3,120	5,620	10,480

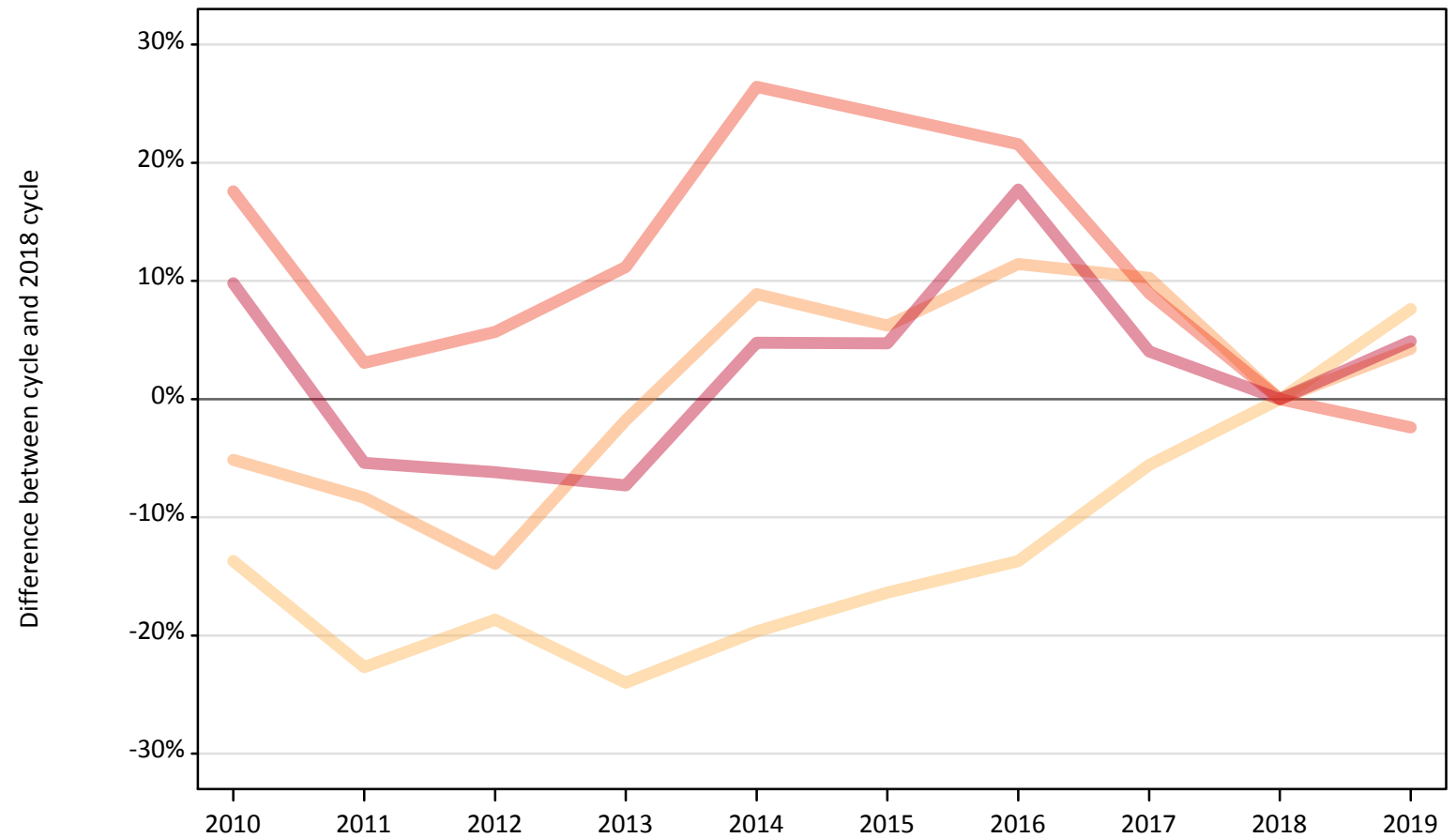
CB.2 Proportion of 18 year old population placed to nursing by country of domicile, 2019 cycle (14 days after A level results day)

Domicile of applicant	Age group	2019
England	18	0.8%
Northern Ireland	18	1.5%
Scotland	18	1.3%
Wales	18	1.1%

CB.3 Placed applicants to nursing from England by age group at 14 days after A level results day

Selected age groups: difference between cycle and 2018 cycle

- 17 and under
- 18
- 19
- 20 to 24
- 25 and over



Note: The percentage change is not plotted in the above chart for groups with fewer than 30 placed applicants in any one cycle.

CB.4 Placed applicants to nursing from England by age group at 14 days after A level results day

All age groups

Domicile of applicant	Age group	2010	2011	2012	2013	2014	2015	2016	2017	2018	2019
England	17 and under	80	30	0	0	10	0	0	10	10	0
	18	4,030	3,610	3,800	3,550	3,760	3,910	4,030	4,410	4,670	5,030
	19	2,140	2,060	1,940	2,210	2,450	2,390	2,510	2,480	2,250	2,350
	20 to 24	5,040	4,420	4,530	4,770	5,420	5,310	5,210	4,670	4,290	4,180
	25 and over	8,250	7,110	7,050	6,960	7,870	7,870	8,850	7,820	7,510	7,880

CB.5 Placed applicants to nursing from England by age group at 14 days after A level results day

Selected age groups: difference between cycle and 2018 cycle

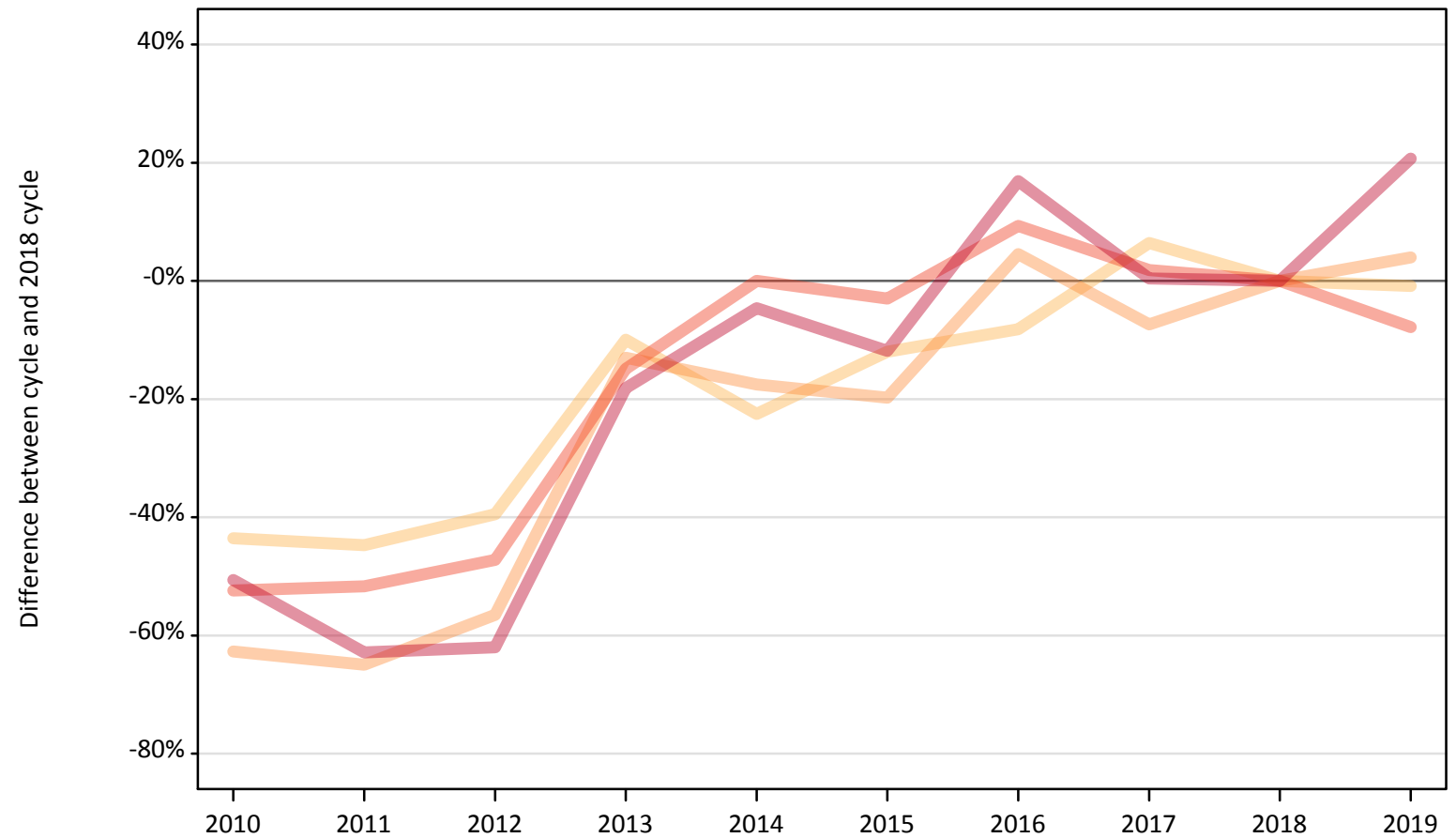
Domicile of applicant	Age group	2010	2011	2012	2013	2014	2015	2016	2017	2018	2019
England	17 and under										
	18	-14%	-23%	-19%	-24%	-20%	-16%	-14%	-6%	0%	8%
	19	-5%	-8%	-14%	-2%	9%	6%	11%	10%	0%	4%
	20 to 24	18%	3%	6%	11%	26%	24%	22%	9%	0%	-2%
	25 and over	10%	-5%	-6%	-7%	5%	5%	18%	4%	0%	5%

Note: The percentage change is not recorded in the above table for groups with fewer than 10 placed applicants in that cycle or in the 2018 cycle.

CB.6 Placed applicants to nursing from Northern Ireland by age group at 14 days after A level results day

Selected age groups: difference between cycle and 2018 cycle

- 17 and under
- 18
- 19
- 20 to 24
- 25 and over



Note: The percentage change is not plotted in the above chart for groups with fewer than 30 placed applicants in any one cycle.

CB.7 Placed applicants to nursing from Northern Ireland by age group at 14 days after A level results day

All age groups

Domicile of applicant	Age group	2010	2011	2012	2013	2014	2015	2016	2017	2018	2019
Northern Ireland	17 and under	0	0	0	0	0	0	0	0	0	0
	18	190	190	210	310	270	300	310	360	340	340
	19	70	60	80	150	150	140	190	160	180	180
	20 to 24	130	130	140	230	270	260	290	270	270	250
	25 and over	120	90	90	190	230	210	280	240	240	290

CB.8 Placed applicants to nursing from Northern Ireland by age group at 14 days after A level results day

Selected age groups: difference between cycle and 2018 cycle

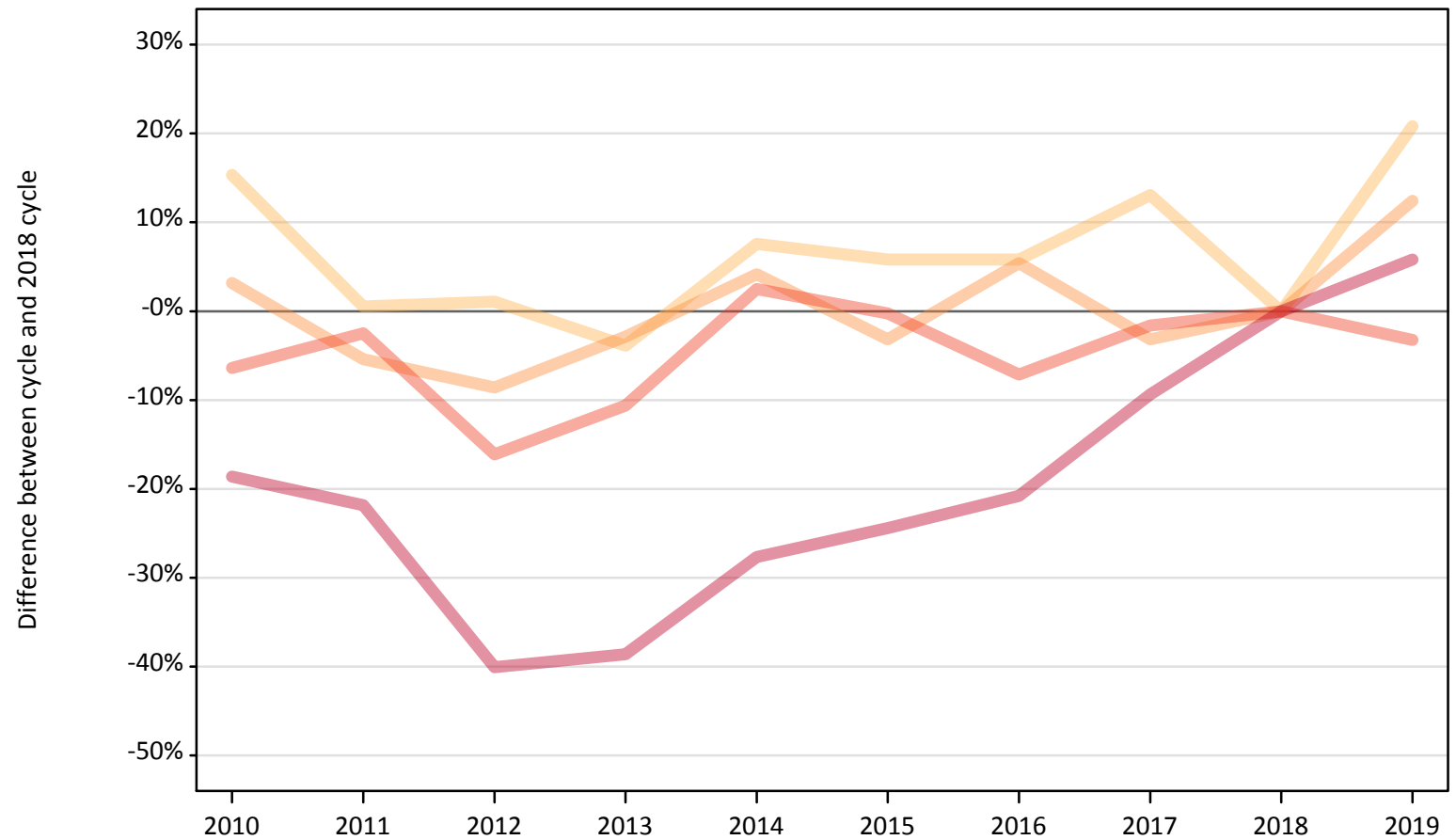
Domicile of applicant	Age group	2010	2011	2012	2013	2014	2015	2016	2017	2018	2019
Northern Ireland	17 and under										
	18	-44%	-45%	-39%	-10%	-23%	-12%	-8%	6%	0%	-1%
	19	-63%	-65%	-56%	-13%	-18%	-20%	5%	-7%	0%	4%
	20 to 24	-52%	-52%	-47%	-15%	0%	-3%	9%	2%	0%	-8%
	25 and over	-51%	-63%	-62%	-18%	-5%	-12%	17%	0%	0%	21%

Note: The percentage change is not recorded in the above table for groups with fewer than 10 placed applicants in that cycle or in the 2018 cycle.

CB.9 Placed applicants to nursing from Scotland by age group at 14 days after A level results day

Selected age groups: difference between cycle and 2018 cycle

- 17 and under
- 18
- 19
- 20 to 24
- 25 and over



Note: The percentage change is not plotted in the above chart for groups with fewer than 30 placed applicants in any one cycle.

CB.10 Placed applicants to nursing from Scotland by age group at 14 days after A level results day

All age groups

Domicile of applicant	Age group	2010	2011	2012	2013	2014	2015	2016	2017	2018	2019
Scotland	17 and under	40	30	30	20	20	10	20	20	20	30
	18	650	570	570	550	610	600	600	640	570	690
	19	320	300	290	310	330	300	330	300	310	350
	20 to 24	750	780	670	720	820	800	740	790	800	770
	25 and over	1,230	1,180	910	930	1,100	1,150	1,200	1,370	1,520	1,600

CB.11 Placed applicants to nursing from Scotland by age group at 14 days after A level results day

Selected age groups: difference between cycle and 2018 cycle

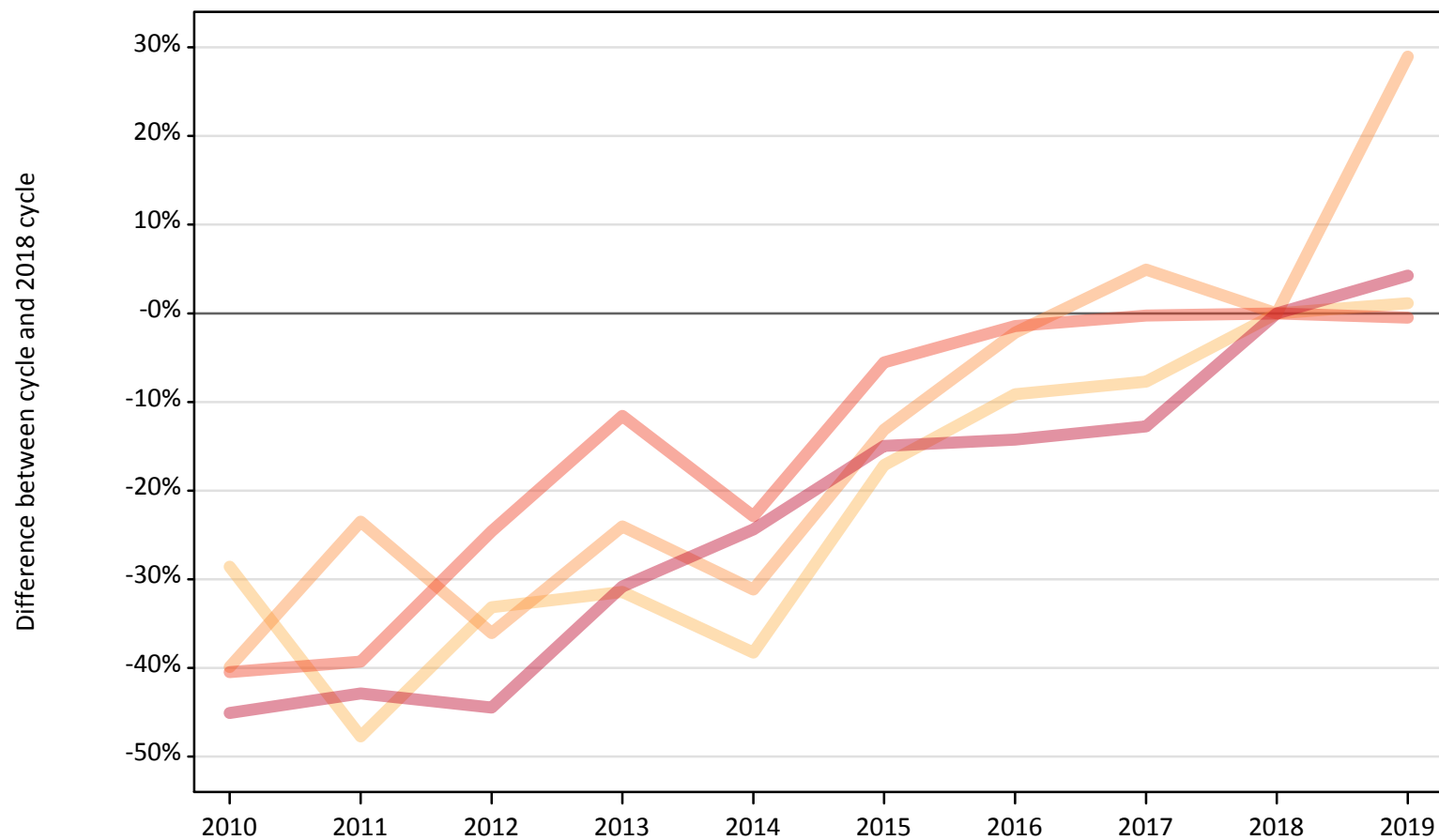
Domicile of applicant	Age group	2010	2011	2012	2013	2014	2015	2016	2017	2018	2019
Scotland	17 and under	159%	47%	47%	24%	0%	-24%	-6%	24%	0%	47%
	18	15%	1%	1%	-4%	8%	6%	6%	13%	0%	21%
	19	3%	-5%	-9%	-3%	4%	-3%	5%	-3%	0%	12%
	20 to 24	-6%	-3%	-16%	-11%	3%	-0%	-7%	-2%	0%	-3%
	25 and over	-19%	-22%	-40%	-39%	-28%	-24%	-21%	-9%	0%	6%

Note: The percentage change is not recorded in the above table for groups with fewer than 10 placed applicants in that cycle or in the 2018 cycle.

CB.12 Placed applicants to nursing from Wales by age group at 14 days after A level results day

Selected age groups: difference between cycle and 2018 cycle

- 17 and under
- 18
- 19
- 20 to 24
- 25 and over



Note: The percentage change is not plotted in the above chart for groups with fewer than 30 placed applicants in any one cycle.

CB.13 Placed applicants to nursing from Wales by age group at 14 days after A level results day

All age groups

Domicile of applicant	Age group	2010	2011	2012	2013	2014	2015	2016	2017	2018	2019
Wales	17 and under	0	0	0	0	0	0	0	0	0	0
	18	250	180	230	240	220	290	320	320	350	350
	19	110	140	120	140	130	160	180	190	180	240
	20 to 24	250	250	310	370	320	390	410	410	420	410
	25 and over	370	390	380	470	520	580	580	590	680	710

CB.14 Placed applicants to nursing from Wales by age group at 14 days after A level results day

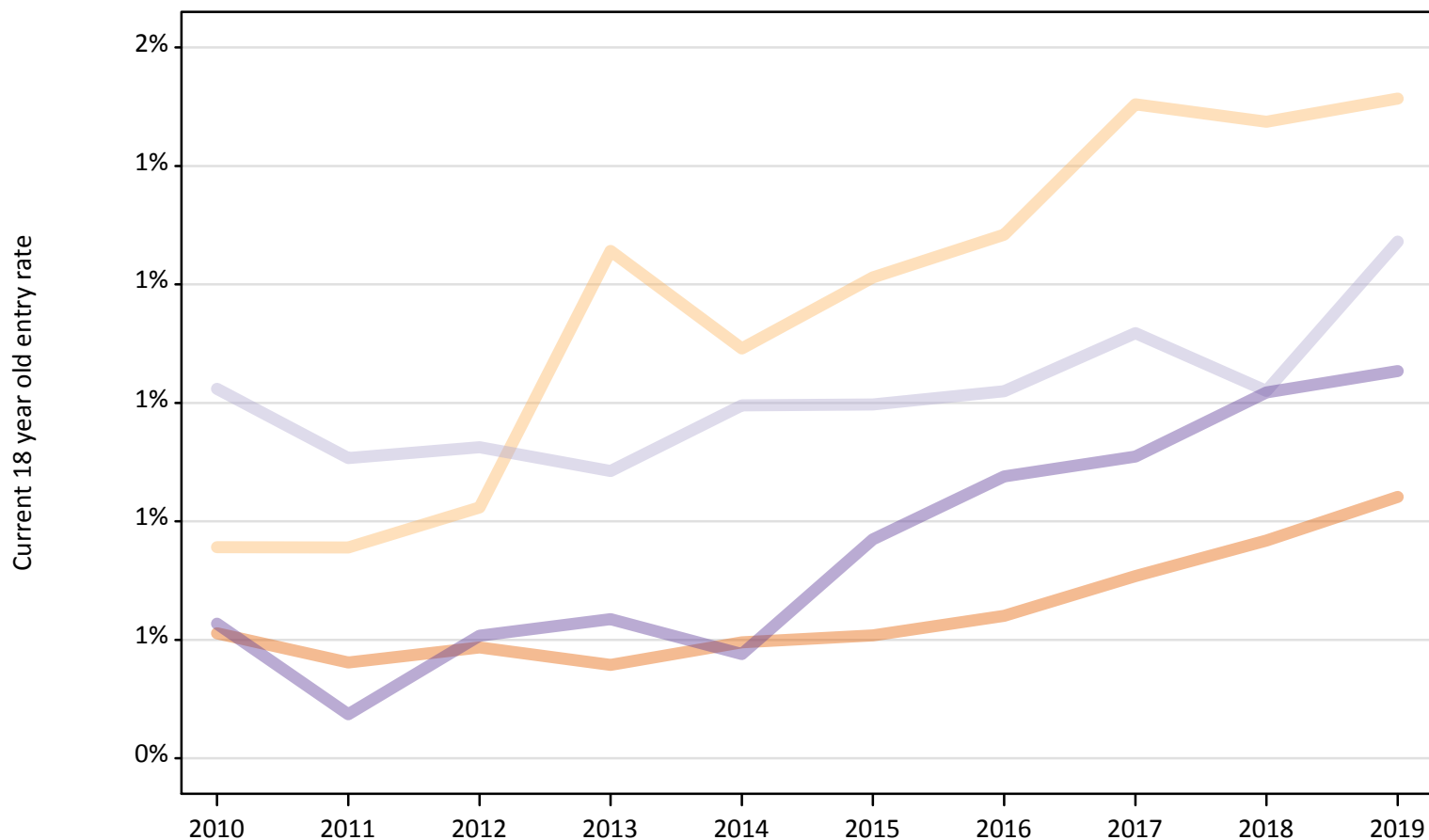
Selected age groups: difference between cycle and 2018 cycle

Domicile of applicant	Age group	2010	2011	2012	2013	2014	2015	2016	2017	2018	2019
Wales	17 and under										
	18	-29%	-48%	-33%	-31%	-38%	-17%	-9%	-8%	0%	1%
	19	-40%	-23%	-36%	-24%	-31%	-13%	-2%	5%	0%	29%
	20 to 24	-40%	-39%	-25%	-12%	-23%	-6%	-1%	-0%	0%	-0%
	25 and over	-45%	-43%	-44%	-31%	-24%	-15%	-14%	-13%	0%	4%

Note: The percentage change is not recorded in the above table for groups with fewer than 10 placed applicants in that cycle or in the 2018 cycle.

CB.15 Entry rates to nursing for 18 year olds by UK country of domicile: 14 days after A level results day

Placed 18 year old applicants as a proportion of the 18 year old population



CB.16 Entry rates to nursing for 18 year olds by UK country of domicile: 14 days after A level results day

Placed 18 year old applicants as a proportion of the 18 year old population

Domicile of applicant	Age group	2010	2011	2012	2013	2014	2015	2016	2017	2018	2019
England	18	0.6%	0.6%	0.6%	0.6%	0.6%	0.6%	0.6%	0.7%	0.8%	0.8%
Northern Ireland	18	0.8%	0.8%	0.8%	1.3%	1.1%	1.2%	1.3%	1.5%	1.5%	1.5%
Scotland	18	1.0%	0.9%	0.9%	0.9%	1.0%	1.0%	1.0%	1.1%	1.0%	1.3%
Wales	18	0.6%	0.5%	0.6%	0.6%	0.6%	0.8%	0.9%	0.9%	1.0%	1.1%