

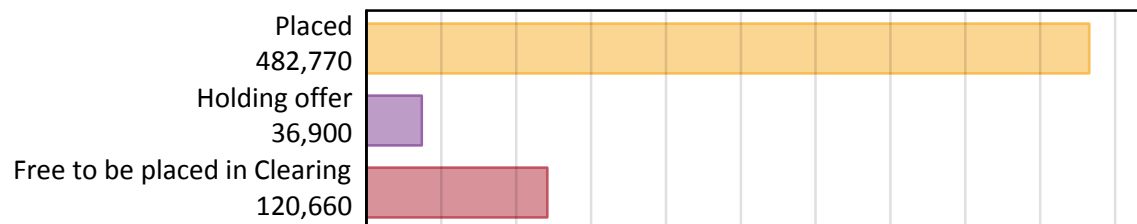
# Daily Clearing Analysis: Overview

## Analysis at 00:05 on Friday 30 August 2019 (15 days after A level results day)

### A.1 Applicants by type and status from all domiciles, 2019 cycle

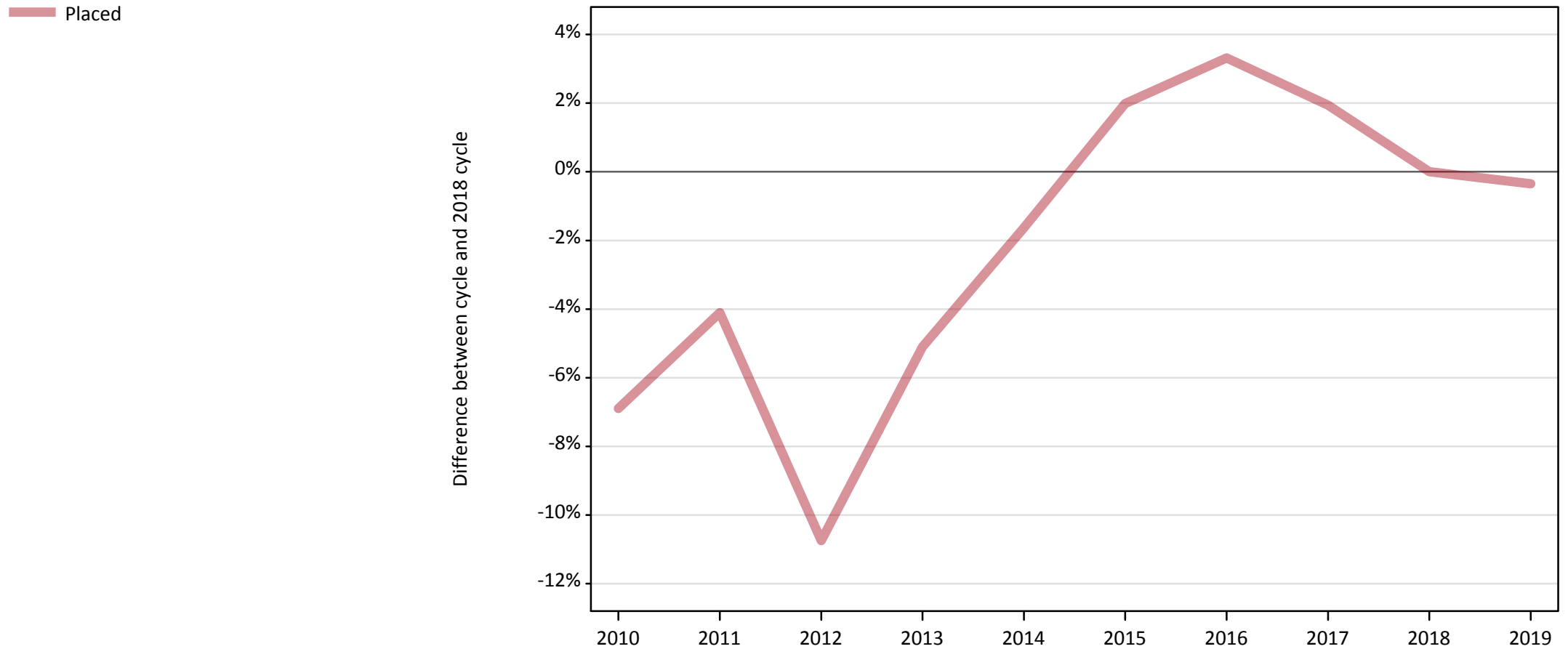
Applicant type	Status	2019
Main scheme	Placed (Clearing)	46,250
	Placed (Adjustment)	600
	Placed (Firm)	376,370
	Placed (Insurance)	33,580
	Placed (Other)	13,980
	Holding offer	36,900
	Free to be placed in Clearing	120,660
Direct to Clearing	Placed (Direct to Clearing)	11,990
	Other (Direct to Clearing)	8,400
All applicants	Placed	482,770

### A.2 Summary of applicants who are placed, holding offers or free to be placed in Clearing ( all domiciles )



### A.3 All placed applicants from all domiciles: 15 days after A level results day

All placed applicants: difference between cycle and 2018 cycle



Note: The percentage change is not plotted in the above chart for groups with fewer than 30 placed applicants in any one cycle.

#### A.4 All placed applicants from all domiciles: 15 days after A level results day

All placed applicants: applicants at 15 days after A level results day

Applicant type	Status	2010	2011	2012	2013	2014	2015	2016	2017	2018	2019
All applicants	Placed	451,060	464,580	432,400	459,750	476,540	494,110	500,510	493,860	484,460	482,770

#### A.5 All placed applicants from all domiciles: 15 days after A level results day

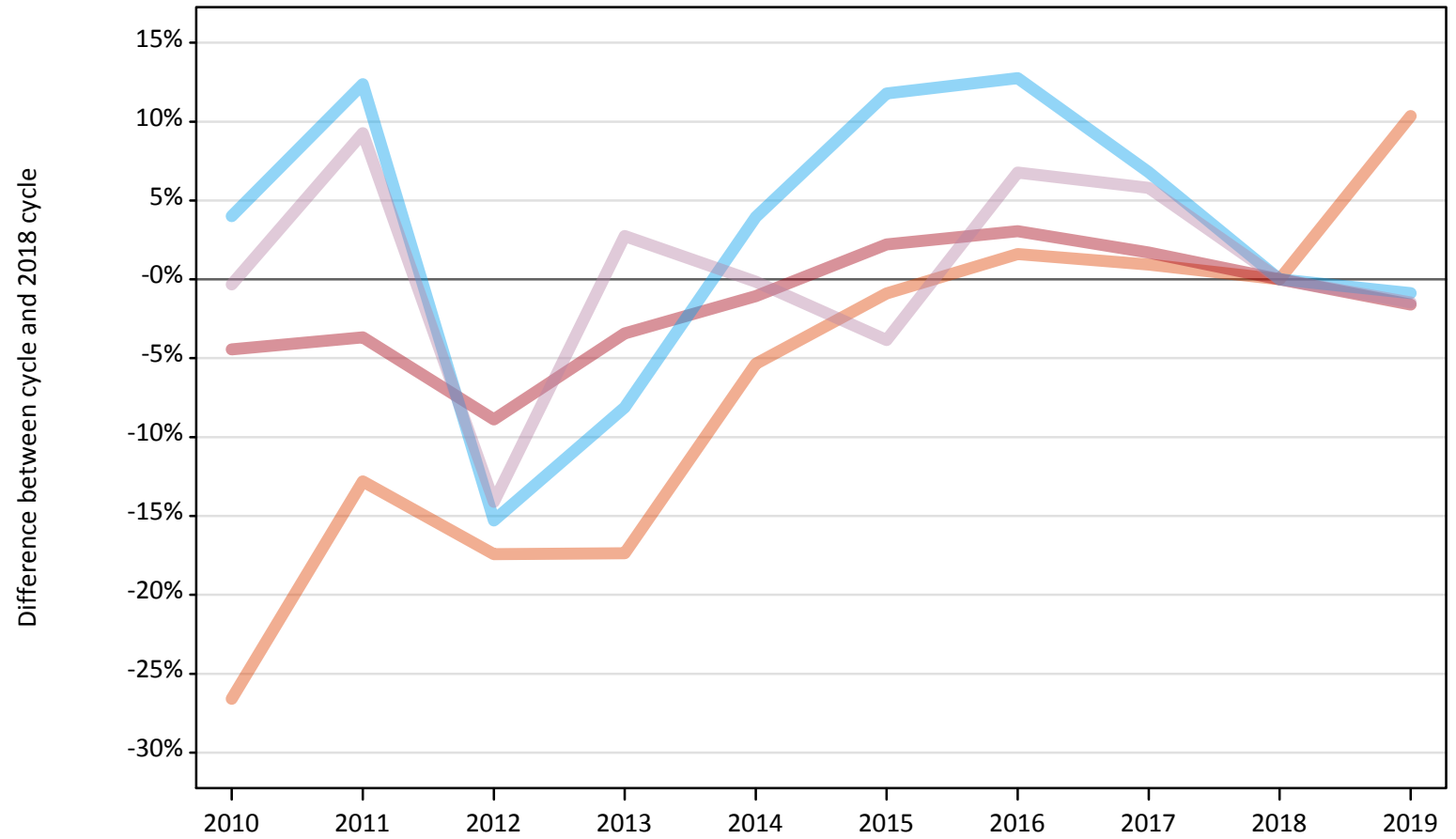
All placed applicants: difference between cycle and 2018 cycle

Applicant type	Status	2010	2011	2012	2013	2014	2015	2016	2017	2018	2019
All applicants	Placed	-7%	-4%	-11%	-5%	-2%	2%	3%	2%	0%	-0%

Note: The percentage change is not recorded in the above table for groups with fewer than 10 placed applicants in that cycle or in the 2018 cycle.

**A.6 Placed main scheme applicants from all domiciles: 15 days after A level results day**  
All Main scheme placed routes (excluding Adjustment): difference between cycle and 2018 cycle

- Placed (Clearing)
- Placed (Firm)
- Placed (Insurance)
- Placed (Other)



Note: The percentage change is not plotted in the above chart for groups with fewer than 30 placed applicants in any one cycle.

### A.7 Placed main scheme applicants from all domiciles: 15 days after A level results day

All Main scheme placed routes (excluding Adjustment): applicants at 15 days after A level results day

Applicant type	Status	2010	2011	2012	2013	2014	2015	2016	2017	2018	2019
Main scheme	Placed (Clearing)	30,770	36,540	34,610	34,630	39,670	41,530	42,580	42,300	41,910	46,250
	Placed (Firm)	365,540	368,410	348,530	369,410	378,450	390,980	394,150	389,020	382,510	376,370
	Placed (Insurance)	35,230	38,070	28,690	31,120	35,210	37,870	38,190	36,170	33,870	33,580
	Placed (Other)	14,140	15,500	12,190	14,580	14,170	13,640	15,150	15,010	14,190	13,980

### A.8 Placed main scheme applicants from all domiciles: 15 days after A level results day

All Main scheme placed routes (excluding Adjustment): difference between cycle and 2018 cycle

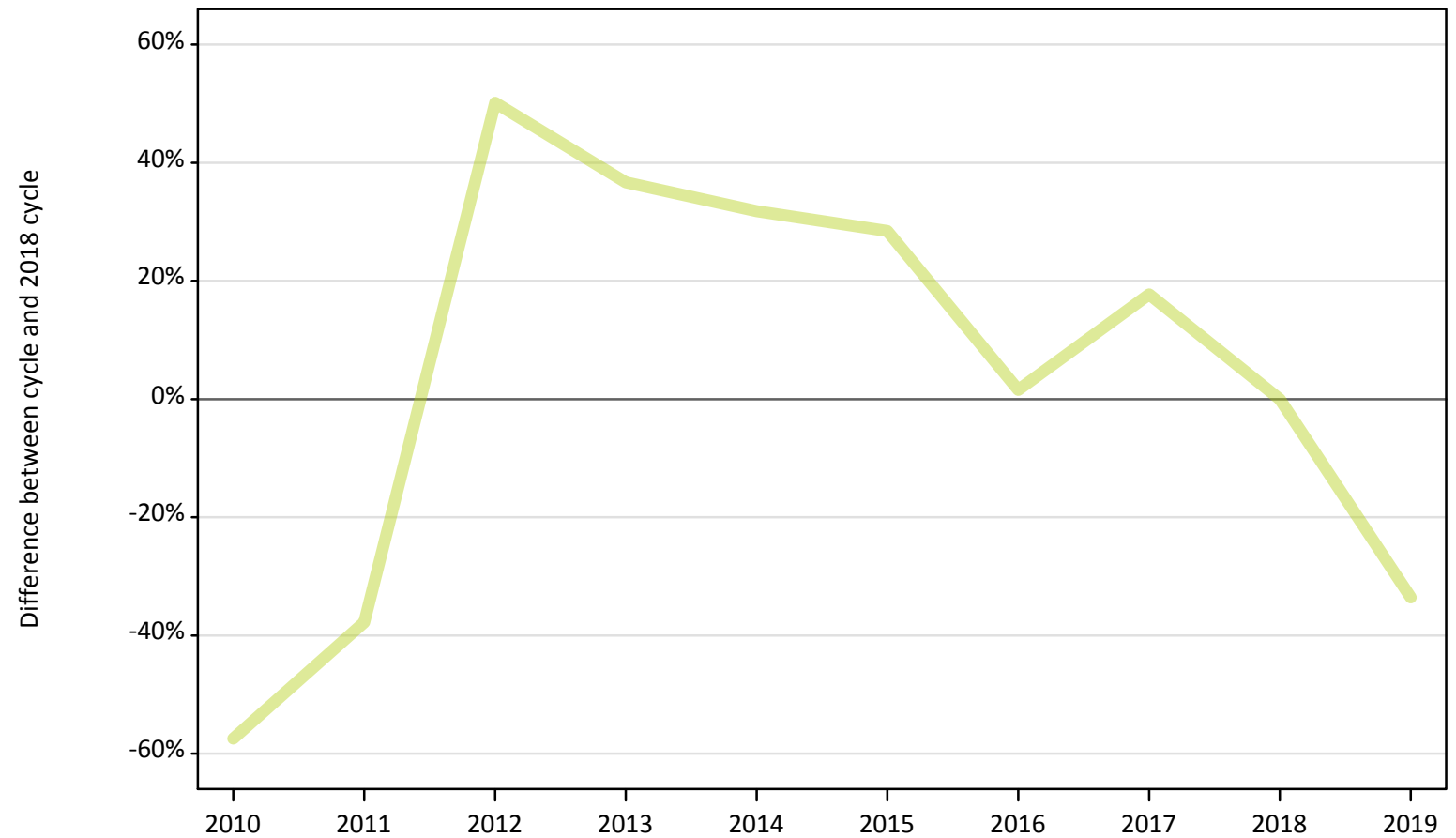
Applicant type	Status	2010	2011	2012	2013	2014	2015	2016	2017	2018	2019
Main scheme	Placed (Clearing)	-27%	-13%	-17%	-17%	-5%	-1%	2%	1%	0%	10%
	Placed (Firm)	-4%	-4%	-9%	-3%	-1%	2%	3%	2%	0%	-2%
	Placed (Insurance)	4%	12%	-15%	-8%	4%	12%	13%	7%	0%	-1%
	Placed (Other)	-0%	9%	-14%	3%	-0%	-4%	7%	6%	0%	-1%

Note: The percentage change is not recorded in the above table for groups with fewer than 10 placed applicants in that cycle or in the 2018 cycle.

## A.9 Main scheme applicants placed through adjustment: 15 days after A level results day

Placed through adjustment: difference between cycle and 2018 cycle

Placed (Adjustment)



Note: The percentage change is not plotted in the above chart for groups with fewer than 30 placed applicants in any one cycle.

### A.10 Main scheme applicants placed through adjustment: 15 days after A level results day

Placed through adjustment: applicants at 15 days after A level results day

Applicant type	Status	2010	2011	2012	2013	2014	2015	2016	2017	2018	2019
Main scheme	Placed (Adjustment)	380	560	1,360	1,230	1,190	1,160	920	1,060	900	600

### A.11 Main scheme applicants placed through adjustment: 15 days after A level results day

Placed through adjustment: difference between cycle and 2018 cycle

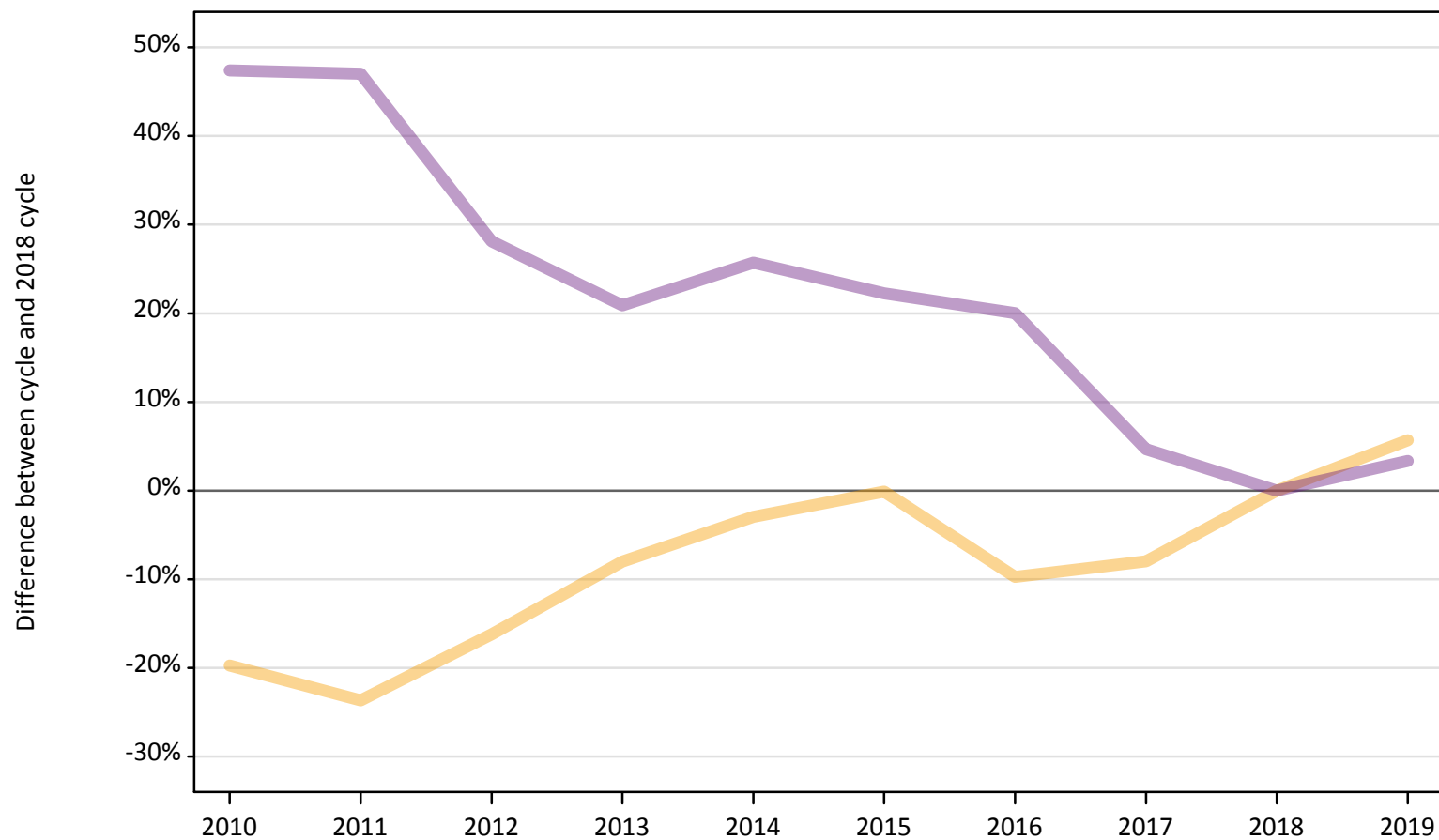
Applicant type	Status	2010	2011	2012	2013	2014	2015	2016	2017	2018	2019
Main scheme	Placed (Adjustment)	-57%	-38%	50%	37%	32%	28%	2%	18%	0%	-34%

Note: The percentage change is not recorded in the above table for groups with fewer than 10 placed applicants in that cycle or in the 2018 cycle.

## A.12 Main scheme applicants not currently placed from all domiciles: 15 days after A level results day

Applicants in unplaced states: difference between cycle and 2018 cycle

— Holding offer  
— Free to be placed in Clearing



Note: The percentage change is not plotted in the above chart for groups with fewer than 30 unplaced applicants in any one cycle.



**A.13 Main scheme applicants not currently placed from all domiciles: 15 days after A level results day**

Applicants in unplaced states: applicants at 15 days after A level results day

Applicant type	Status	2010	2011	2012	2013	2014	2015	2016	2017	2018	2019
Main scheme	Holding offer	28,020	26,650	29,260	32,110	33,880	34,870	31,520	32,140	34,920	36,900
	Free to be placed in Clearing	172,110	171,680	149,590	141,180	146,790	142,760	140,130	122,220	116,770	120,660

**A.14 Main scheme applicants not currently placed from all domiciles: 15 days after A level results day**

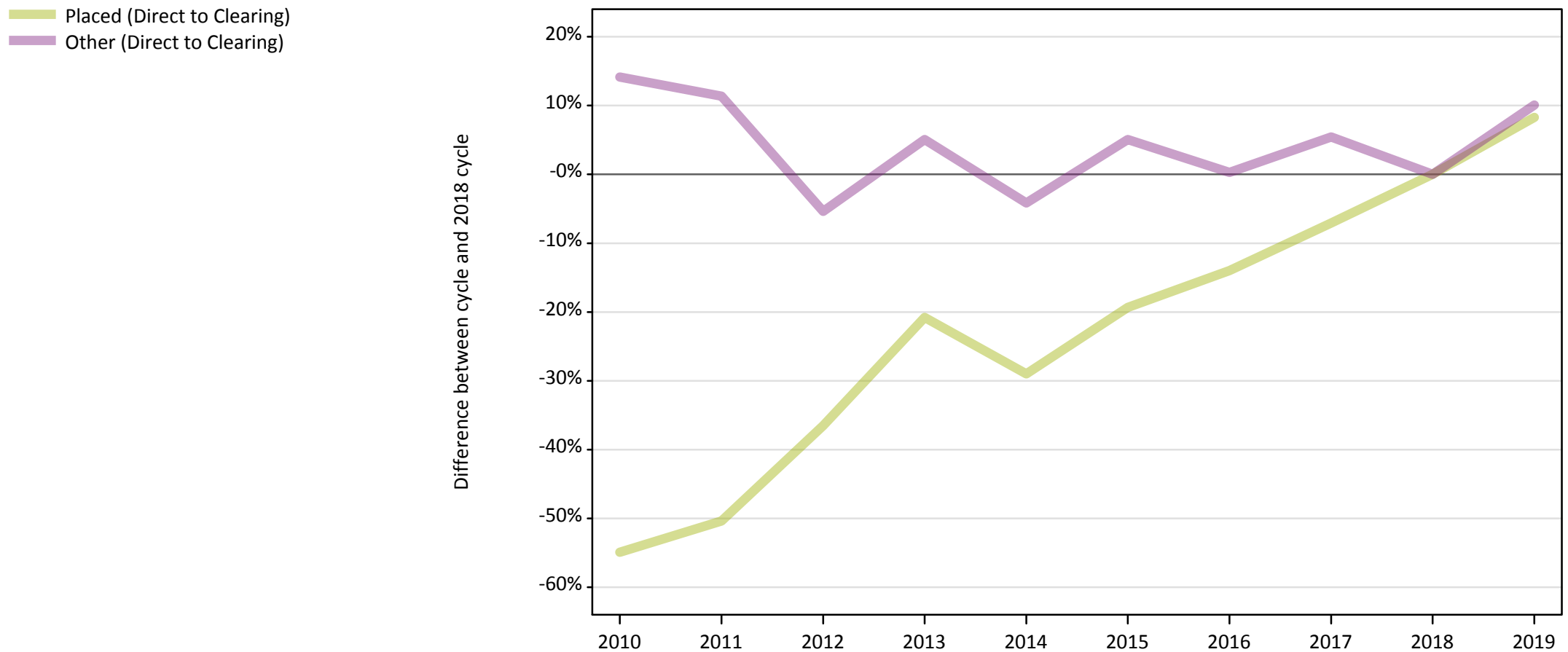
Applicants in unplaced states: difference between cycle and 2018 cycle

Applicant type	Status	2010	2011	2012	2013	2014	2015	2016	2017	2018	2019
Main scheme	Holding offer	-20%	-24%	-16%	-8%	-3%	-0%	-10%	-8%	0%	6%
	Free to be placed in Clearing	47%	47%	28%	21%	26%	22%	20%	5%	0%	3%

Note: The percentage change is not recorded in the above table for groups with fewer than 10 unplaced applicants in that cycle or in the 2018 cycle.

### A.15 Direct to Clearing applicants from all domiciles: 15 days after A level results day

Direct to Clearing: difference between cycle and 2018 cycle



Note: The percentage change is not plotted in the above chart for groups with fewer than 30 placed applicants in any one cycle.

**A.16 Direct to Clearing applicants from all domiciles: 15 days after A level results day**

Direct to Clearing 15 days after A level results day

Applicant type	Status	2010	2011	2012	2013	2014	2015	2016	2017	2018	2019
Direct to Clearing	Placed (Direct to Clearing)	4,990	5,500	7,030	8,770	7,860	8,930	9,530	10,290	11,080	11,990
	Other (Direct to Clearing)	8,710	8,490	7,220	8,010	7,310	8,010	7,650	8,040	7,630	8,400

**A.17 Direct to Clearing applicants from all domiciles: 15 days after A level results day**

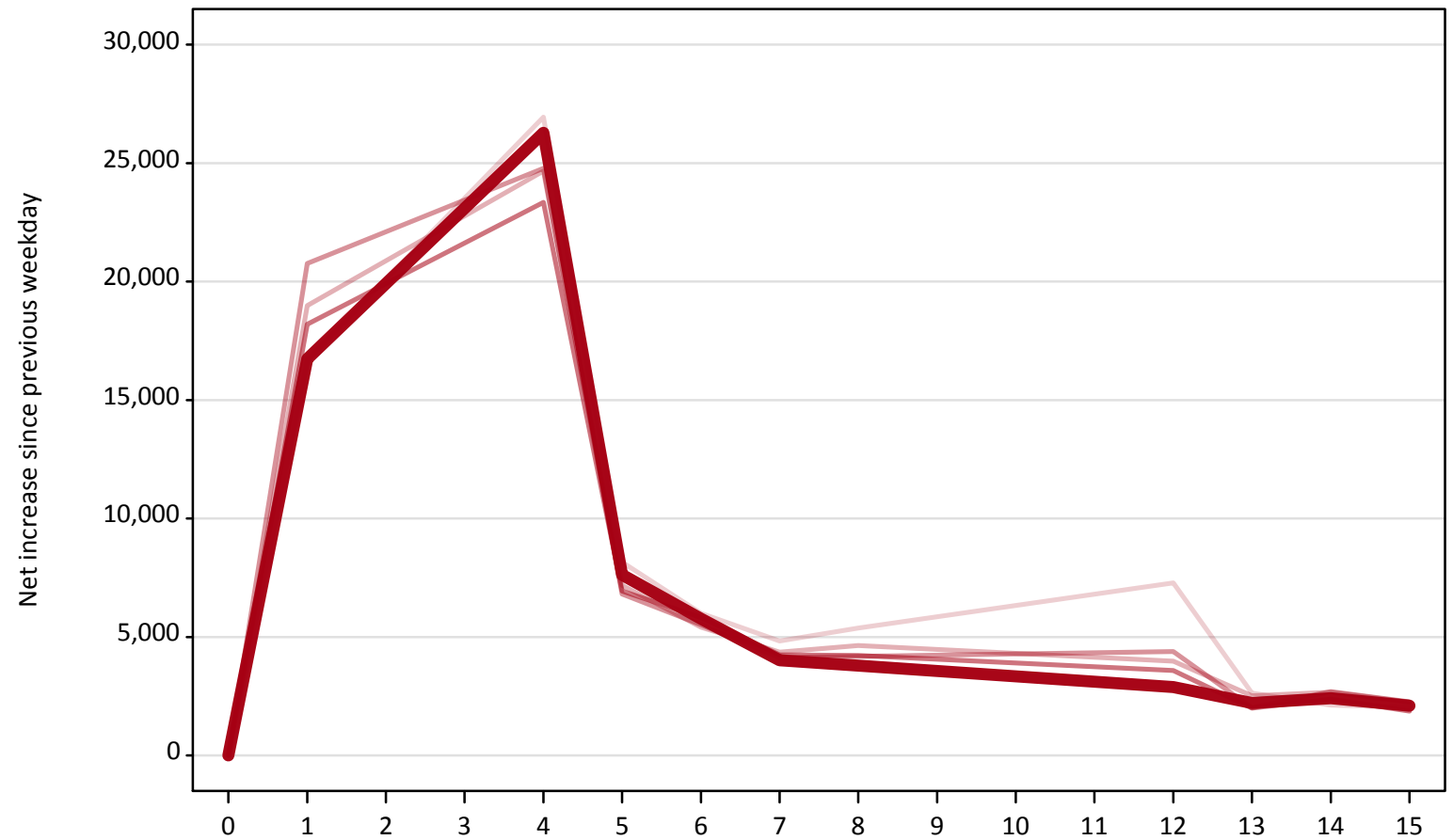
Direct to Clearing: difference between cycle and 2018 cycle

Applicant type	Status	2010	2011	2012	2013	2014	2015	2016	2017	2018	2019
Direct to Clearing	Placed (Direct to Clearing)	-55%	-50%	-37%	-21%	-29%	-19%	-14%	-7%	0%	8%
	Other (Direct to Clearing)	14%	11%	-5%	5%	-4%	5%	0%	5%	0%	10%

Note: The percentage change is not recorded in the above table for groups with fewer than 10 placed applicants in that cycle or in the 2018 cycle.

**A.18 All Placed: Daily net change (from all domiciles)**  
Net increase since previous weekday (2019 cycle up to 15 days after A level results day)

- 2015
- 2016
- 2017
- 2018
- 2019**

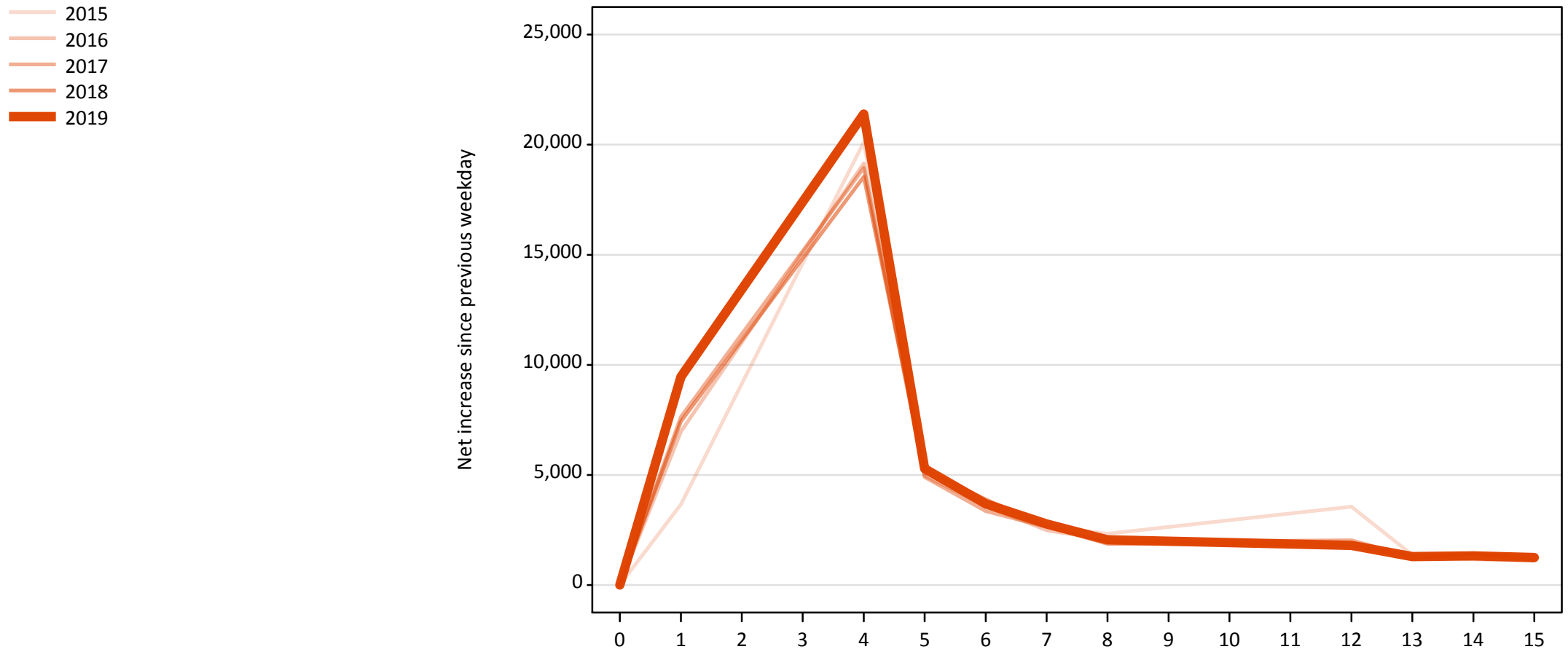


**A.19 All Placed: Daily net change (from all domiciles)**

Net increase since previous weekday (2019 cycle up to 15 days after A level results day)

Applicant status, days since A level results day		2015	2016	2017	2018	2019
All Placed	0	0	0	0	0	0
	1	16,680	18,990	20,770	18,200	16,740
	4	26,940	24,670	24,790	23,340	26,280
	5	8,160	7,170	6,810	6,940	7,620
	6	6,000	5,410	5,510	5,820	5,770
	7	4,830	4,350	4,140	4,240	4,010
	8	5,370	4,640	4,190	4,220	3,790
	12	7,280	3,980	4,380	3,590	2,880
	13	2,630	2,510	2,010	2,000	2,210
	14	2,120	2,660	2,700	2,370	2,420
	15	2,030	2,250	2,260	1,870	2,100

**A.20 Placed through Clearing only: Daily net change (from all domiciles)**  
Net increase since previous weekday (2019 cycle up to 15 days after A level results day)



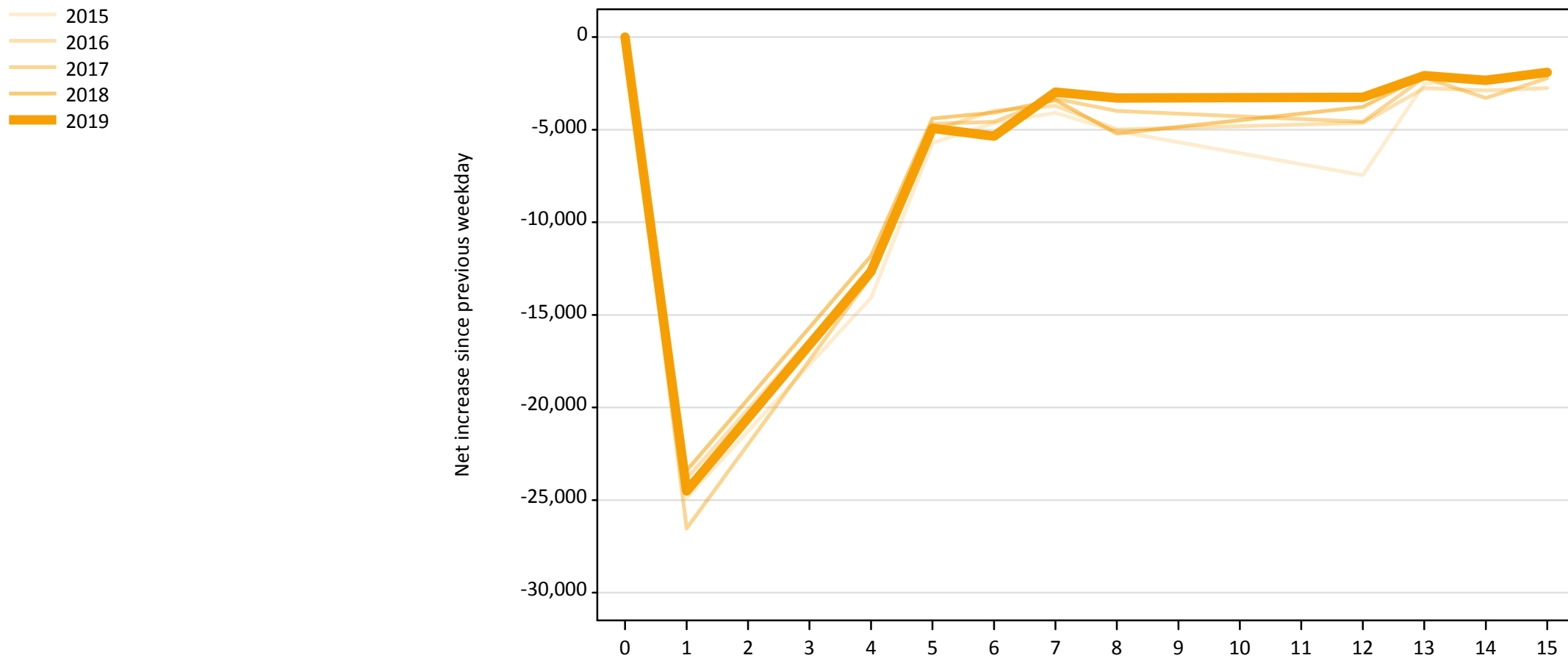
**A.21 Placed through Clearing only: Daily net change (from all domiciles)**

Net increase since previous weekday (2019 cycle up to 15 days after A level results day)

Applicant status, days since A level results day		2015	2016	2017	2018	2019
Placed through Clearing only	0	0	0	0	0	0
	1	3,660	6,970	7,640	7,440	9,460
	4	20,110	19,140	18,940	18,550	21,390
	5	5,290	4,960	4,910	5,250	5,280
	6	3,560	3,590	3,360	3,890	3,680
	7	2,680	2,480	2,640	2,660	2,770
	8	2,330	2,050	1,950	1,880	2,050
	12	3,550	1,740	2,030	1,840	1,800
	13	1,370	1,350	1,270	1,190	1,290
	14	1,160	1,420	1,370	1,440	1,330
	15	1,100	1,210	1,320	1,130	1,250

### A.22 Holding Offer: Daily net change (from all domiciles)

Net increase since previous weekday (2019 cycle up to 15 days after A level results day)





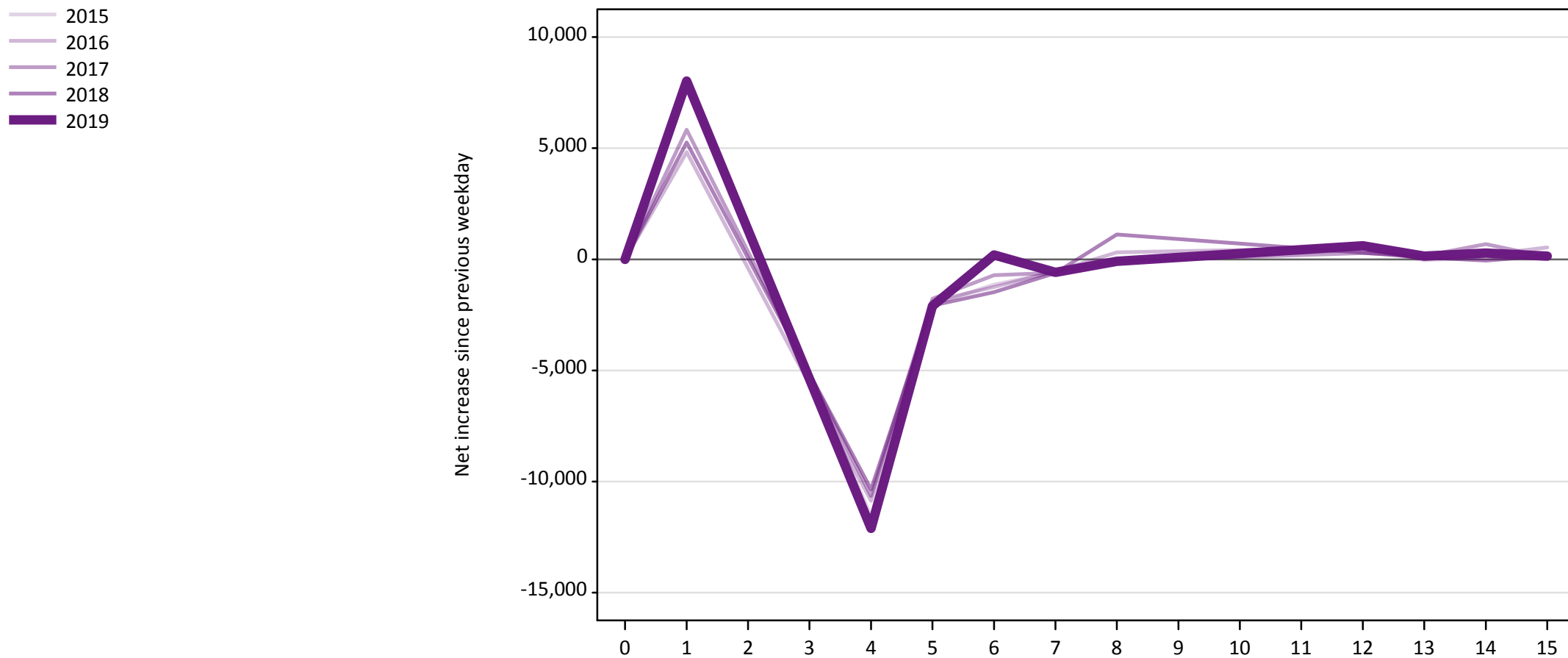
**A.23 Holding Offer: Daily net change (from all domiciles)**

Net increase since previous weekday (2019 cycle up to 15 days after A level results day)

Applicant status, days since A level results day		2015	2016	2017	2018	2019
Holding Offer	0	0	0	0	0	0
	1	-24,880	-23,840	-26,530	-23,410	-24,510
	4	-14,080	-12,600	-12,900	-11,810	-12,650
	5	-5,720	-5,030	-4,680	-4,390	-4,930
	6	-4,650	-3,970	-4,580	-4,080	-5,340
	7	-4,090	-3,700	-3,330	-3,400	-2,970
	8	-5,080	-4,990	-3,990	-5,210	-3,290
	12	-7,460	-4,640	-4,580	-3,770	-3,260
	13	-2,520	-2,760	-2,180	-2,080	-2,080
	14	-2,130	-2,880	-3,280	-2,250	-2,340
	15	-1,980	-2,760	-2,230	-2,020	-1,900

### A.24 Free to be placed in Clearing: Daily net change (from all domiciles)

Net increase since previous weekday (2019 cycle up to 15 days after A level results day)



**A.25 Free to be placed in Clearing: Daily net change (from all domiciles)**

Net increase since previous weekday (2019 cycle up to 15 days after A level results day)

Applicant status, days since A level results day		2015	2016	2017	2018	2019
Free to be placed in Clearing	0	0	0	0	0	0
	1	8,010	4,820	5,830	5,260	8,020
	4	-11,570	-10,870	-10,650	-10,350	-12,110
	5	-2,040	-1,900	-1,780	-2,080	-2,110
	6	-1,130	-1,250	-710	-1,480	200
	7	-570	-540	-610	-620	-590
	8	-80	310	-80	1,120	-90
	12	430	530	280	290	610
	13	-40	120	150	90	140
	14	80	200	680	-60	280
	15	60	530	100	160	140