

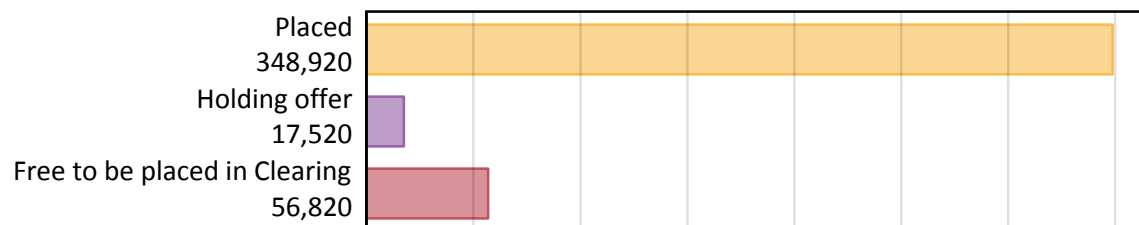
Daily Clearing Analysis: Overview

Analysis at 00:05 on Friday 30 August 2019 (15 days after A level results day)

A.1 Applicants by type and status from England, 2019 cycle

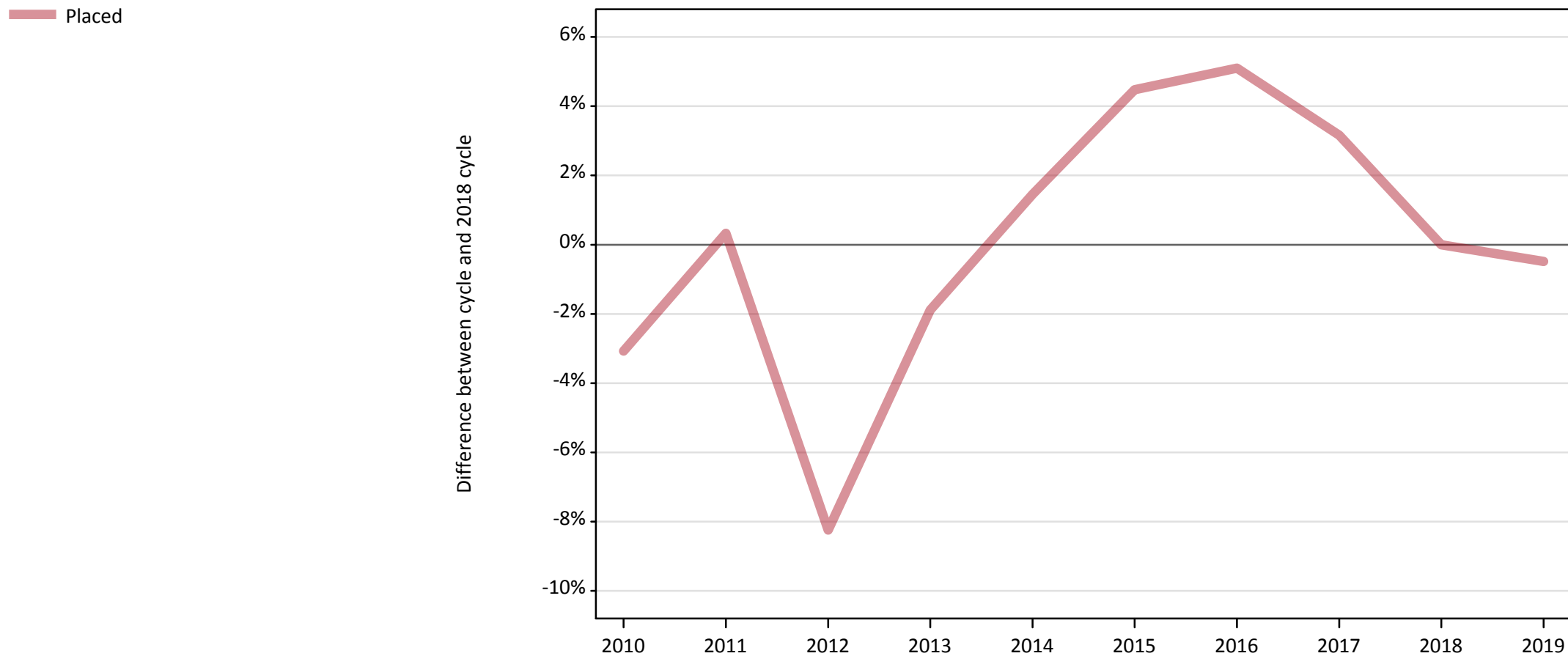
Applicant type	Status	2019
Main scheme	Placed (Clearing)	37,920
	Placed (Adjustment)	500
	Placed (Firm)	266,700
	Placed (Insurance)	24,700
	Placed (Other)	9,370
	Holding offer	17,520
	Free to be placed in Clearing	56,820
Direct to Clearing	Placed (Direct to Clearing)	9,740
	Other (Direct to Clearing)	6,350
All applicants	Placed	348,920

A.2 Summary of applicants who are placed, holding offers or free to be placed in Clearing (England)



A.3 All placed applicants from England: 15 days after A level results day

All placed applicants: difference between cycle and 2018 cycle



Note: The percentage change is not plotted in the above chart for groups with fewer than 30 placed applicants in any one cycle.

A.4 All placed applicants from England: 15 days after A level results day

All placed applicants: applicants at 15 days after A level results day

Applicant type	Status	2010	2011	2012	2013	2014	2015	2016	2017	2018	2019
All applicants	Placed	339,840	351,780	321,710	344,000	355,720	366,320	368,510	361,710	350,620	348,920

A.5 All placed applicants from England: 15 days after A level results day

All placed applicants: difference between cycle and 2018 cycle

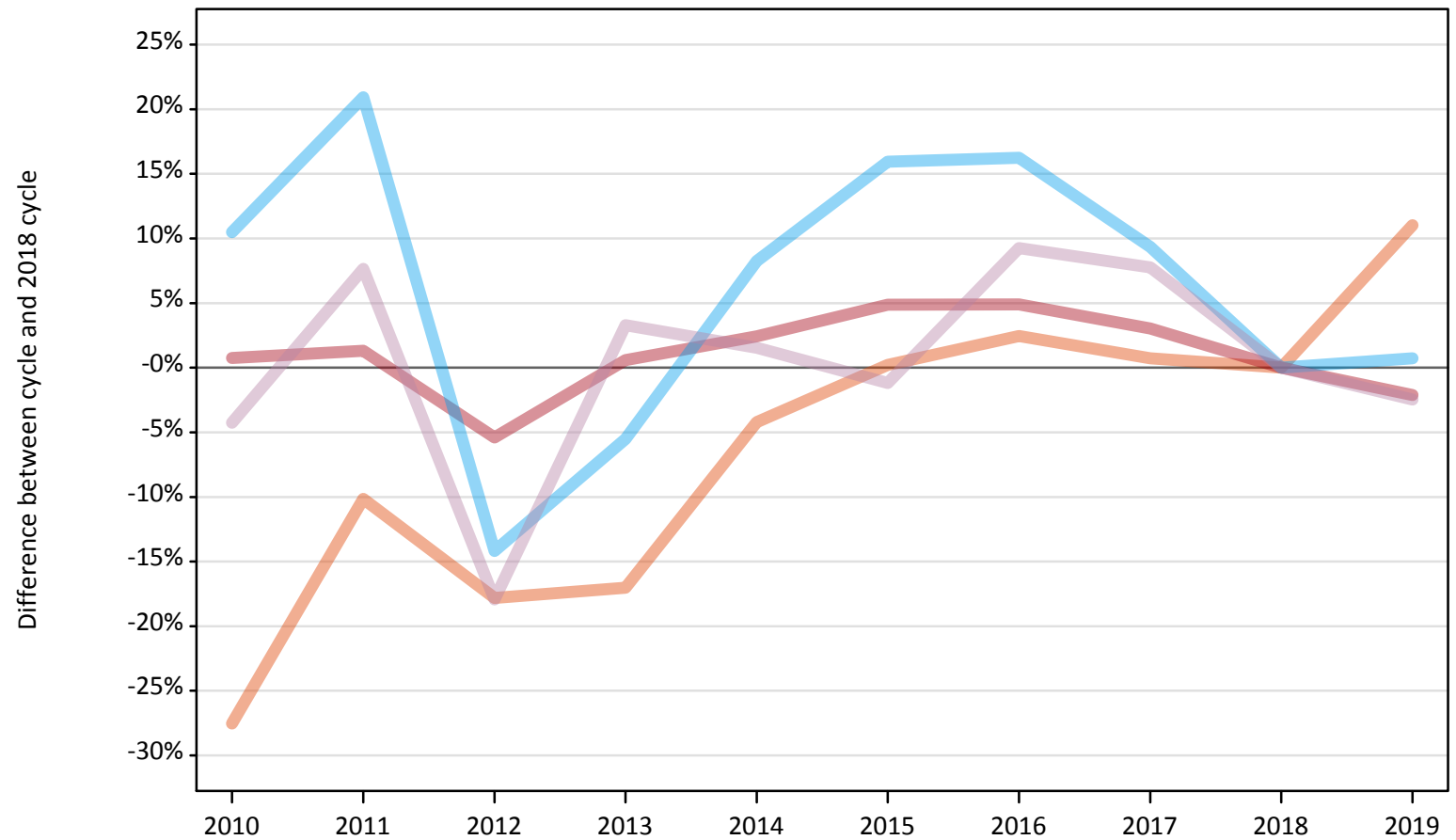
Applicant type	Status	2010	2011	2012	2013	2014	2015	2016	2017	2018	2019
All applicants	Placed	-3%	0%	-8%	-2%	1%	4%	5%	3%	0%	-0%

Note: The percentage change is not recorded in the above table for groups with fewer than 10 placed applicants in that cycle or in the 2018 cycle.

A.6 Placed main scheme applicants from England: 15 days after A level results day

All Main scheme placed routes (excluding Adjustment): difference between cycle and 2018 cycle

- Placed (Clearing)
- Placed (Firm)
- Placed (Insurance)
- Placed (Other)



Note: The percentage change is not plotted in the above chart for groups with fewer than 30 placed applicants in any one cycle.

A.7 Placed main scheme applicants from England: 15 days after A level results day

All Main scheme placed routes (excluding Adjustment): applicants at 15 days after A level results day

Applicant type	Status	2010	2011	2012	2013	2014	2015	2016	2017	2018	2019
Main scheme	Placed (Clearing)	24,750	30,680	28,070	28,330	32,710	34,220	34,990	34,400	34,150	37,920
	Placed (Firm)	274,510	276,040	257,780	274,100	279,110	285,750	285,820	280,740	272,490	266,700
	Placed (Insurance)	27,090	29,650	21,040	23,160	26,540	28,430	28,500	26,810	24,520	24,700
	Placed (Other)	9,200	10,340	7,880	9,920	9,750	9,490	10,490	10,350	9,610	9,370

A.8 Placed main scheme applicants from England: 15 days after A level results day

All Main scheme placed routes (excluding Adjustment): difference between cycle and 2018 cycle

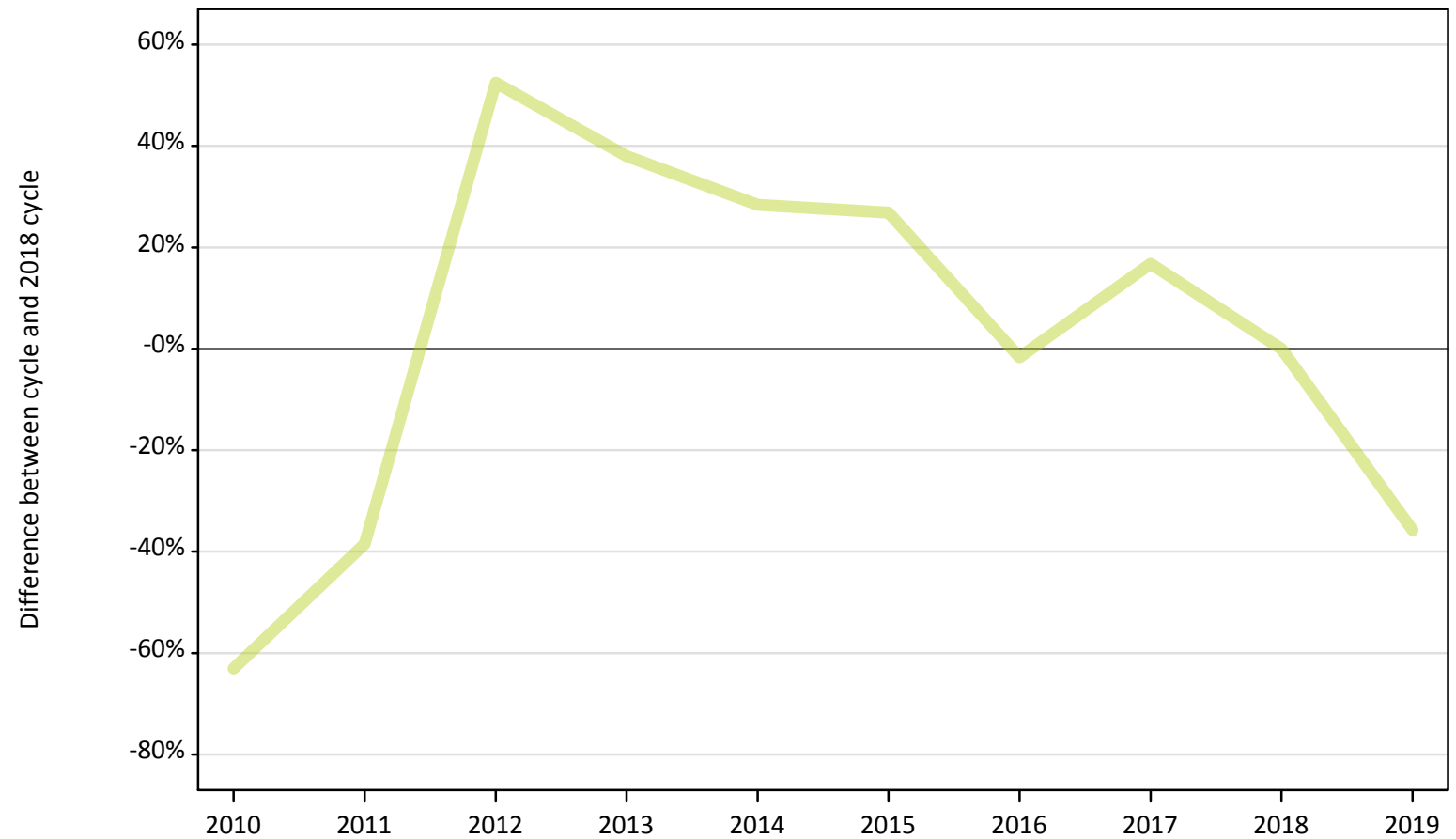
Applicant type	Status	2010	2011	2012	2013	2014	2015	2016	2017	2018	2019
Main scheme	Placed (Clearing)	-28%	-10%	-18%	-17%	-4%	0%	2%	1%	0%	11%
	Placed (Firm)	1%	1%	-5%	1%	2%	5%	5%	3%	0%	-2%
	Placed (Insurance)	10%	21%	-14%	-6%	8%	16%	16%	9%	0%	1%
	Placed (Other)	-4%	8%	-18%	3%	2%	-1%	9%	8%	0%	-2%

Note: The percentage change is not recorded in the above table for groups with fewer than 10 placed applicants in that cycle or in the 2018 cycle.

A.9 Main scheme applicants placed through adjustment: 15 days after A level results day

Placed through adjustment: difference between cycle and 2018 cycle

Placed (Adjustment)



Note: The percentage change is not plotted in the above chart for groups with fewer than 30 placed applicants in any one cycle.

A.10 Main scheme applicants placed through adjustment: 15 days after A level results day

Placed through adjustment: applicants at 15 days after A level results day

Applicant type	Status	2010	2011	2012	2013	2014	2015	2016	2017	2018	2019
Main scheme	Placed (Adjustment)	290	480	1,180	1,070	990	980	760	900	770	500

A.11 Main scheme applicants placed through adjustment: 15 days after A level results day

Placed through adjustment: difference between cycle and 2018 cycle

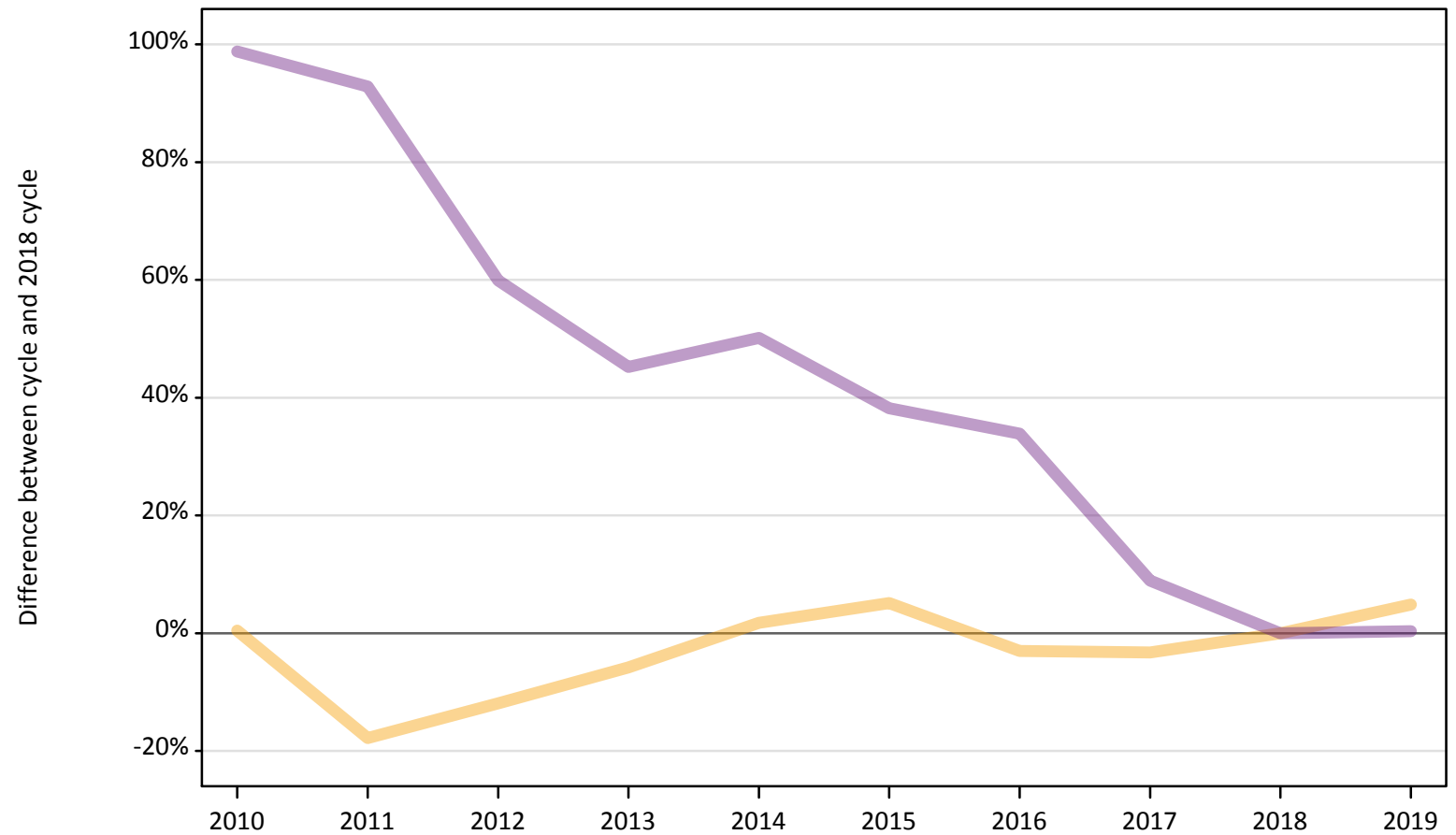
Applicant type	Status	2010	2011	2012	2013	2014	2015	2016	2017	2018	2019
Main scheme	Placed (Adjustment)	-63%	-39%	52%	38%	28%	27%	-2%	17%	0%	-36%

Note: The percentage change is not recorded in the above table for groups with fewer than 10 placed applicants in that cycle or in the 2018 cycle.

A.12 Main scheme applicants not currently placed from England: 15 days after A level results day

Applicants in unplaced states: difference between cycle and 2018 cycle

— Holding offer
— Free to be placed in Clearing



Note: The percentage change is not plotted in the above chart for groups with fewer than 30 unplaced applicants in any one cycle.

A.13 Main scheme applicants not currently placed from England: 15 days after A level results day

Applicants in unplaced states: applicants at 15 days after A level results day

Applicant type	Status	2010	2011	2012	2013	2014	2015	2016	2017	2018	2019
Main scheme	Holding offer	16,780	13,730	14,720	15,740	17,000	17,560	16,210	16,160	16,710	17,520
	Free to be placed in Clearing	112,560	109,180	90,540	82,230	85,030	78,250	75,790	61,680	56,620	56,820

A.14 Main scheme applicants not currently placed from England: 15 days after A level results day

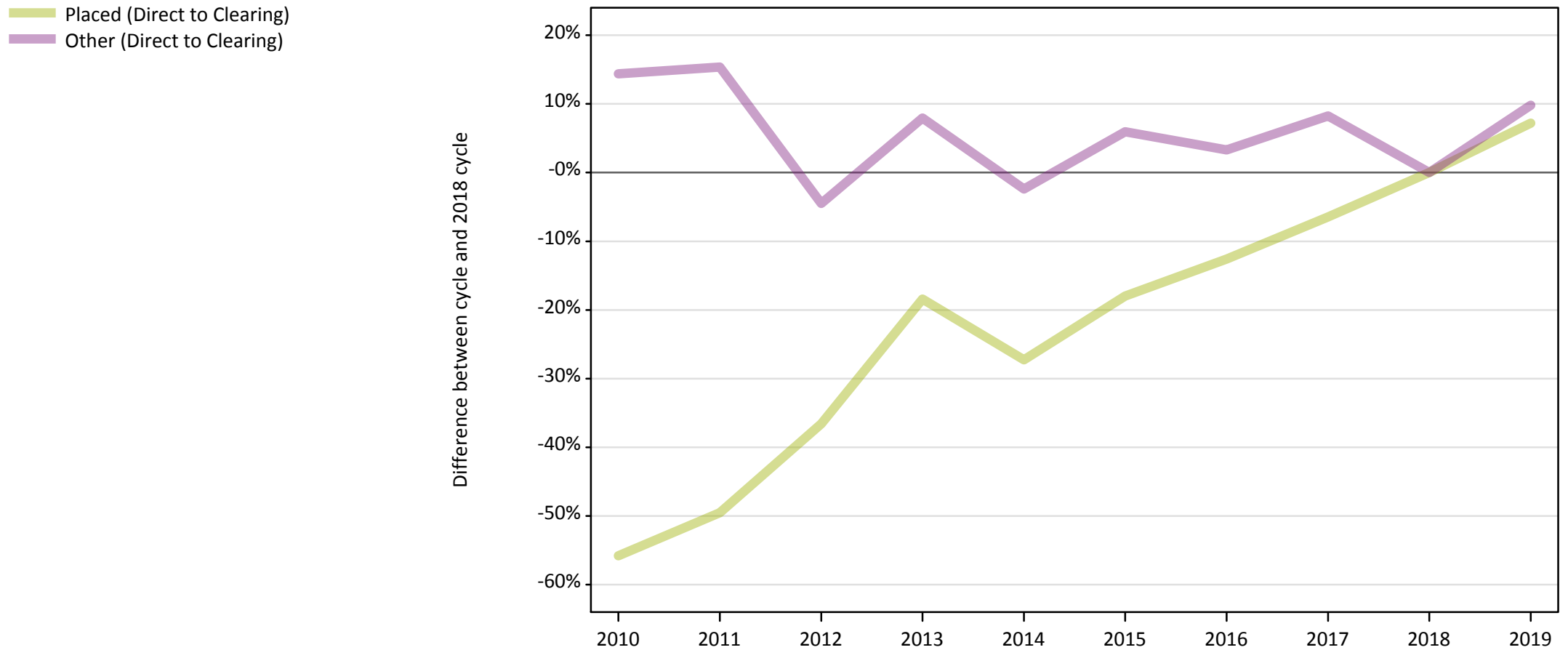
Applicants in unplaced states: difference between cycle and 2018 cycle

Applicant type	Status	2010	2011	2012	2013	2014	2015	2016	2017	2018	2019
Main scheme	Holding offer	0%	-18%	-12%	-6%	2%	5%	-3%	-3%	0%	5%
	Free to be placed in Clearing	99%	93%	60%	45%	50%	38%	34%	9%	0%	0%

Note: The percentage change is not recorded in the above table for groups with fewer than 10 unplaced applicants in that cycle or in the 2018 cycle.

A.15 Direct to Clearing applicants from England: 15 days after A level results day

Direct to Clearing: difference between cycle and 2018 cycle



Note: The percentage change is not plotted in the above chart for groups with fewer than 30 placed applicants in any one cycle.

A.16 Direct to Clearing applicants from England: 15 days after A level results day

Direct to Clearing 15 days after A level results day

Applicant type	Status	2010	2011	2012	2013	2014	2015	2016	2017	2018	2019
Direct to Clearing	Placed (Direct to Clearing)	4,020	4,590	5,760	7,410	6,610	7,450	7,940	8,500	9,090	9,740
	Other (Direct to Clearing)	6,610	6,670	5,520	6,240	5,640	6,120	5,970	6,260	5,780	6,350

A.17 Direct to Clearing applicants from England: 15 days after A level results day

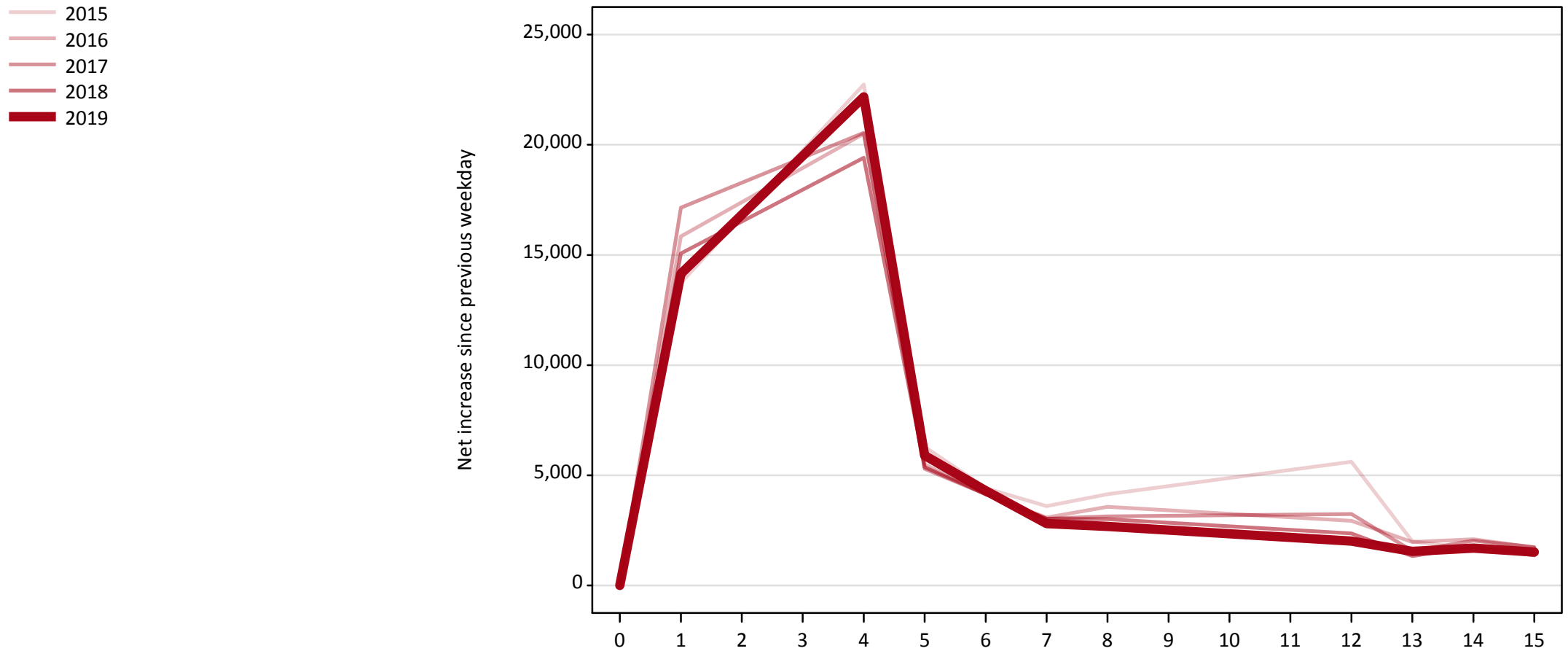
Direct to Clearing: difference between cycle and 2018 cycle

Applicant type	Status	2010	2011	2012	2013	2014	2015	2016	2017	2018	2019
Direct to Clearing	Placed (Direct to Clearing)	-56%	-50%	-37%	-18%	-27%	-18%	-13%	-6%	0%	7%
	Other (Direct to Clearing)	14%	15%	-4%	8%	-2%	6%	3%	8%	0%	10%

Note: The percentage change is not recorded in the above table for groups with fewer than 10 placed applicants in that cycle or in the 2018 cycle.

A.18 All Placed: Daily net change (from England)

Net increase since previous weekday (2019 cycle up to 15 days after A level results day)

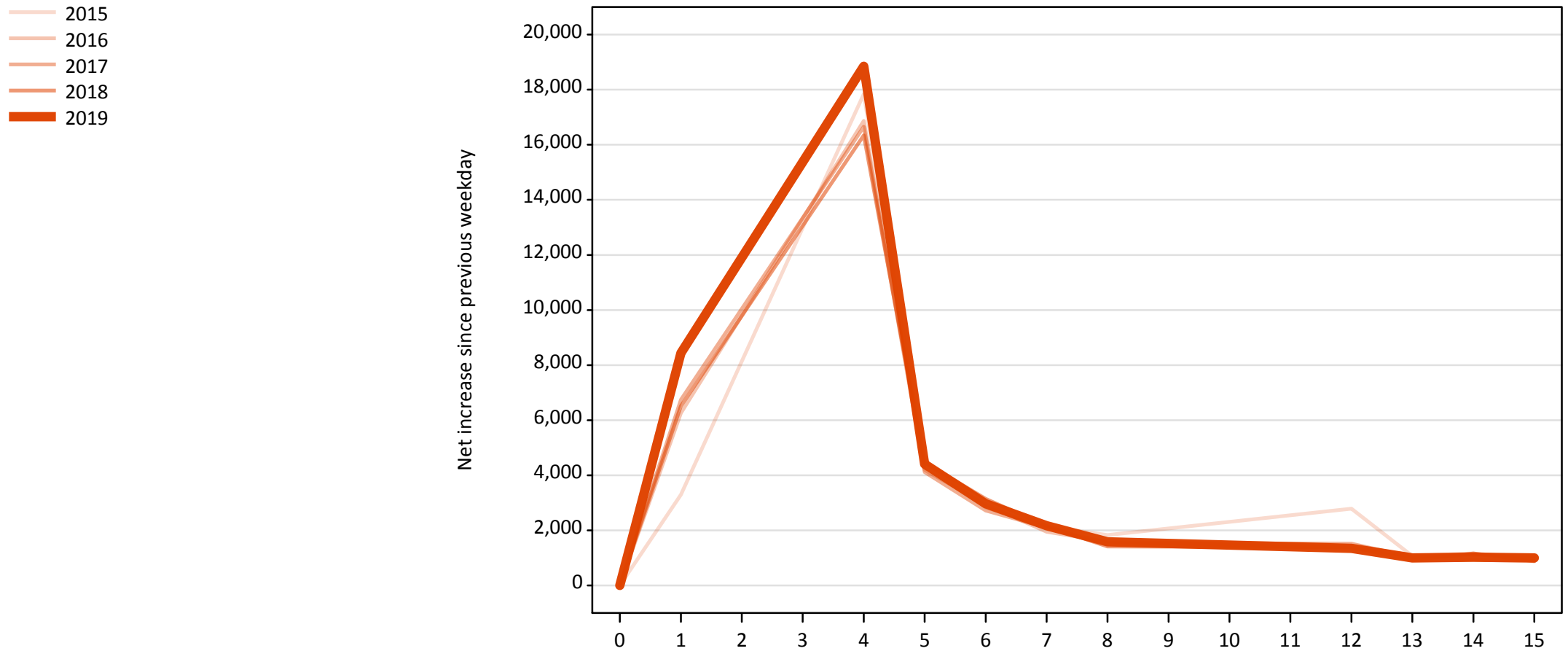


A.19 All Placed: Daily net change (from England)

Net increase since previous weekday (2019 cycle up to 15 days after A level results day)

Applicant status, days since A level results day	2015	2016	2017	2018	2019	
All Placed	0	0	0	0	0	
	1	13,730	15,840	17,150	15,070	14,150
	4	22,730	20,500	20,540	19,410	22,170
	5	6,300	5,500	5,300	5,370	5,900
	6	4,410	4,120	4,140	4,150	4,300
	7	3,600	3,080	3,030	3,030	2,800
	8	4,140	3,570	3,130	3,010	2,680
	12	5,610	2,940	3,240	2,360	2,020
	13	2,000	1,970	1,560	1,340	1,550
	14	1,640	2,100	2,030	1,760	1,690
	15	1,540	1,730	1,740	1,360	1,520

A.20 Placed through Clearing only: Daily net change (from England)
Net increase since previous weekday (2019 cycle up to 15 days after A level results day)



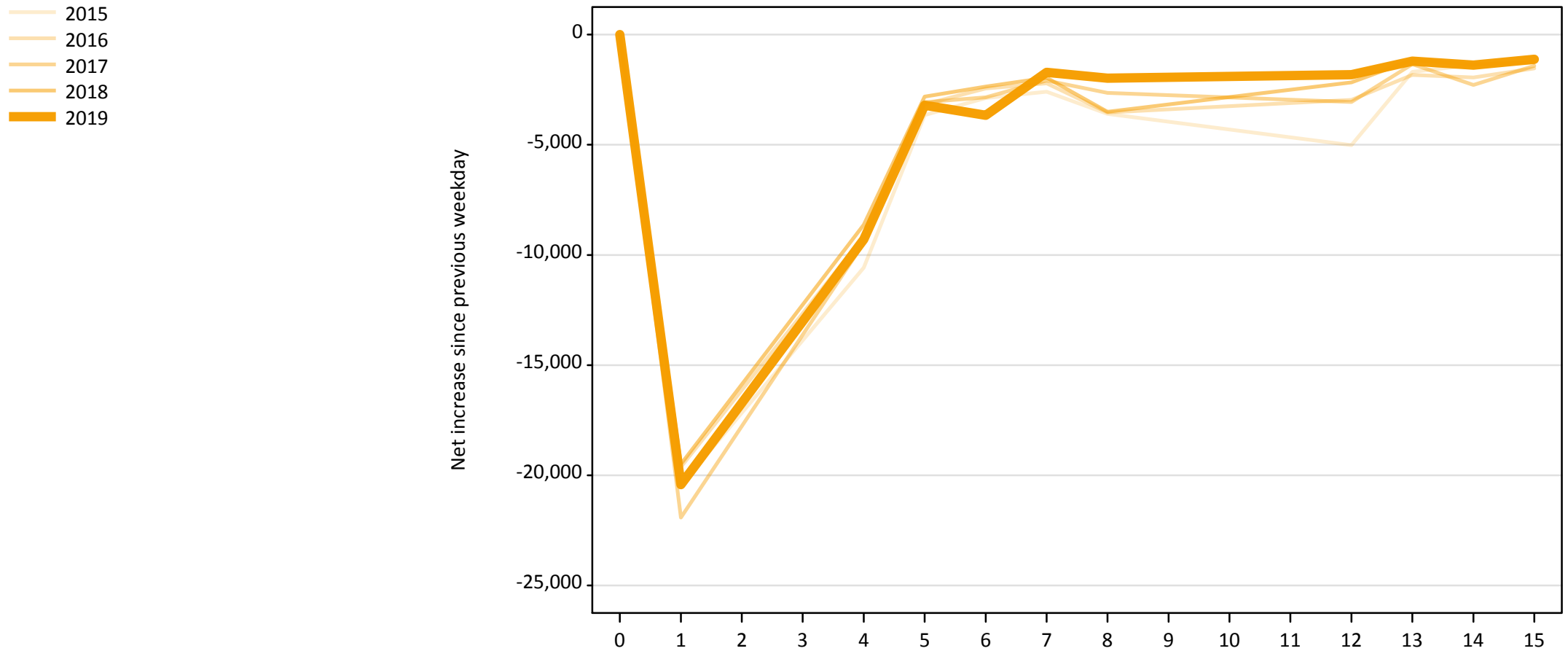
A.21 Placed through Clearing only: Daily net change (from England)

Net increase since previous weekday (2019 cycle up to 15 days after A level results day)

Applicant status, days since A level results day		2015	2016	2017	2018	2019
Placed through Clearing only	0	0	0	0	0	0
	1	3,300	6,260	6,740	6,510	8,440
	4	17,850	16,870	16,660	16,340	18,850
	5	4,470	4,190	4,120	4,470	4,410
	6	2,830	2,940	2,720	3,150	2,970
	7	2,140	1,950	2,100	2,160	2,170
	8	1,830	1,590	1,540	1,410	1,580
	12	2,790	1,360	1,510	1,390	1,350
	13	1,060	1,080	1,020	920	1,000
	14	930	1,160	1,120	1,160	1,030
	15	880	970	1,060	880	1,000

A.22 Holding Offer: Daily net change (from England)

Net increase since previous weekday (2019 cycle up to 15 days after A level results day)

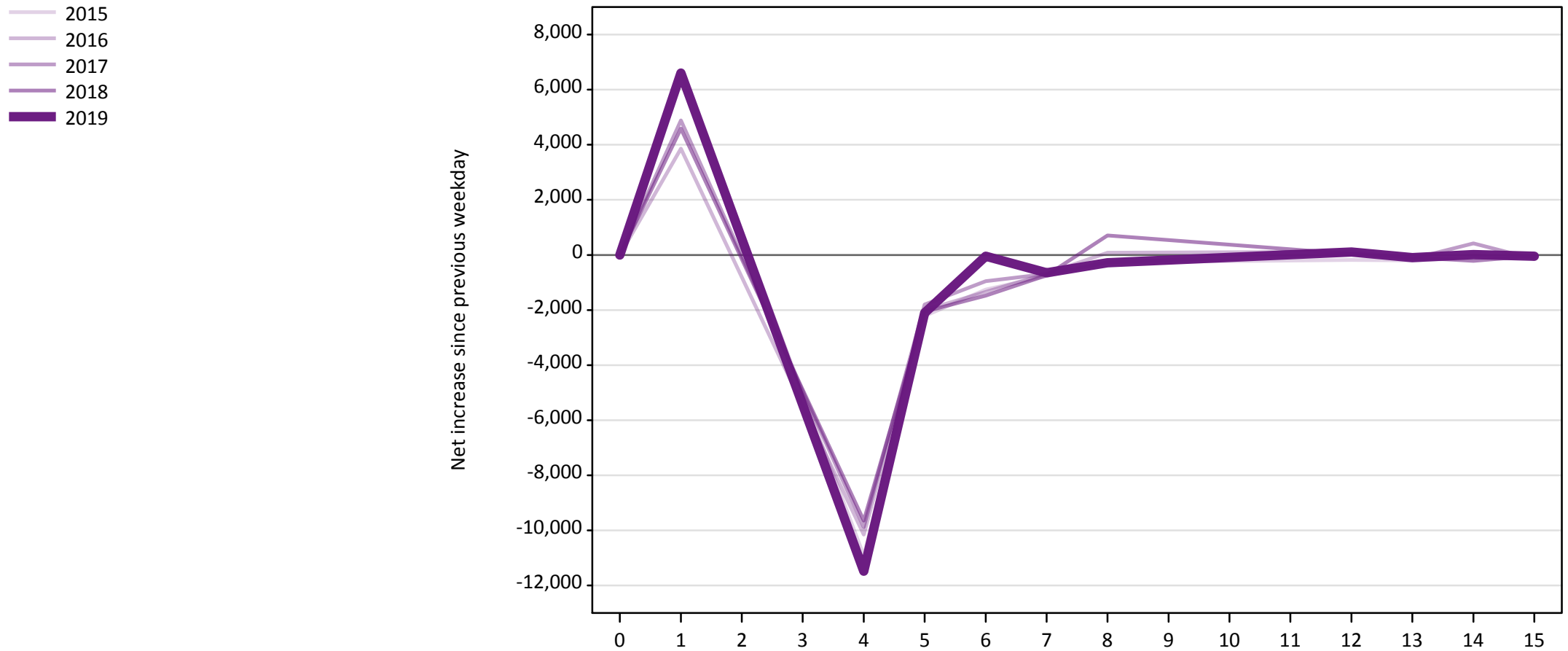


A.23 Holding Offer: Daily net change (from England)

Net increase since previous weekday (2019 cycle up to 15 days after A level results day)

Applicant status, days since A level results day	2015	2016	2017	2018	2019	
Holding Offer	0	0	0	0	0	
	1	-20,460	-19,620	-21,920	-19,500	-20,430
	4	-10,580	-9,160	-9,470	-8,630	-9,300
	5	-3,660	-3,160	-3,060	-2,820	-3,210
	6	-2,870	-2,450	-2,840	-2,360	-3,660
	7	-2,590	-2,210	-2,080	-1,960	-1,720
	8	-3,590	-3,540	-2,650	-3,510	-1,980
	12	-5,010	-2,970	-3,060	-2,170	-1,820
	13	-1,690	-1,830	-1,340	-1,160	-1,210
	14	-1,370	-1,950	-2,290	-1,360	-1,390
	15	-1,280	-1,530	-1,420	-1,240	-1,120

A.24 Free to be placed in Clearing: Daily net change (from England)
Net increase since previous weekday (2019 cycle up to 15 days after A level results day)



A.25 Free to be placed in Clearing: Daily net change (from England)

Net increase since previous weekday (2019 cycle up to 15 days after A level results day)

Applicant status, days since A level results day		2015	2016	2017	2018	2019
Free to be placed in Clearing	0	0	0	0	0	0
	1	6,690	3,860	4,890	4,590	6,600
	4	-10,920	-10,160	-9,880	-9,640	-11,480
	5	-2,220	-2,000	-1,800	-2,050	-2,110
	6	-1,260	-1,340	-950	-1,480	-40
	7	-770	-680	-690	-740	-640
	8	-270	80	-270	710	-290
	12	-190	110	50	40	110
	13	-200	-130	-140	-90	-100
	14	-120	-20	420	-220	10
	15	-70	-70	-150	-30	-50