

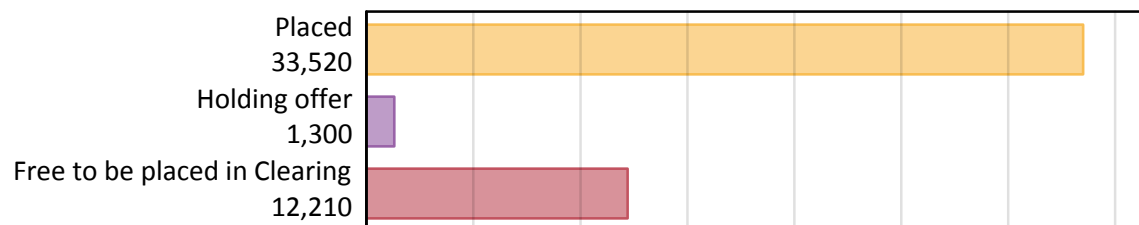
# Daily Clearing Analysis: Overview

Analysis at 00:05 on Friday 30 August 2019 (15 days after A level results day)

## A.1 Applicants by type and status from Scotland, 2019 cycle

| Applicant type     | Status                        | 2019   |
|--------------------|-------------------------------|--------|
| Main scheme        | Placed (Clearing)             | 1,210  |
|                    | Placed (Adjustment)           | 0      |
|                    | Placed (Firm)                 | 30,050 |
|                    | Placed (Insurance)            | 1,250  |
|                    | Placed (Other)                | 590    |
|                    | Holding offer                 | 1,300  |
|                    | Free to be placed in Clearing | 12,210 |
| Direct to Clearing | Placed (Direct to Clearing)   | 420    |
|                    | Other (Direct to Clearing)    | 430    |
| All applicants     | Placed                        | 33,520 |

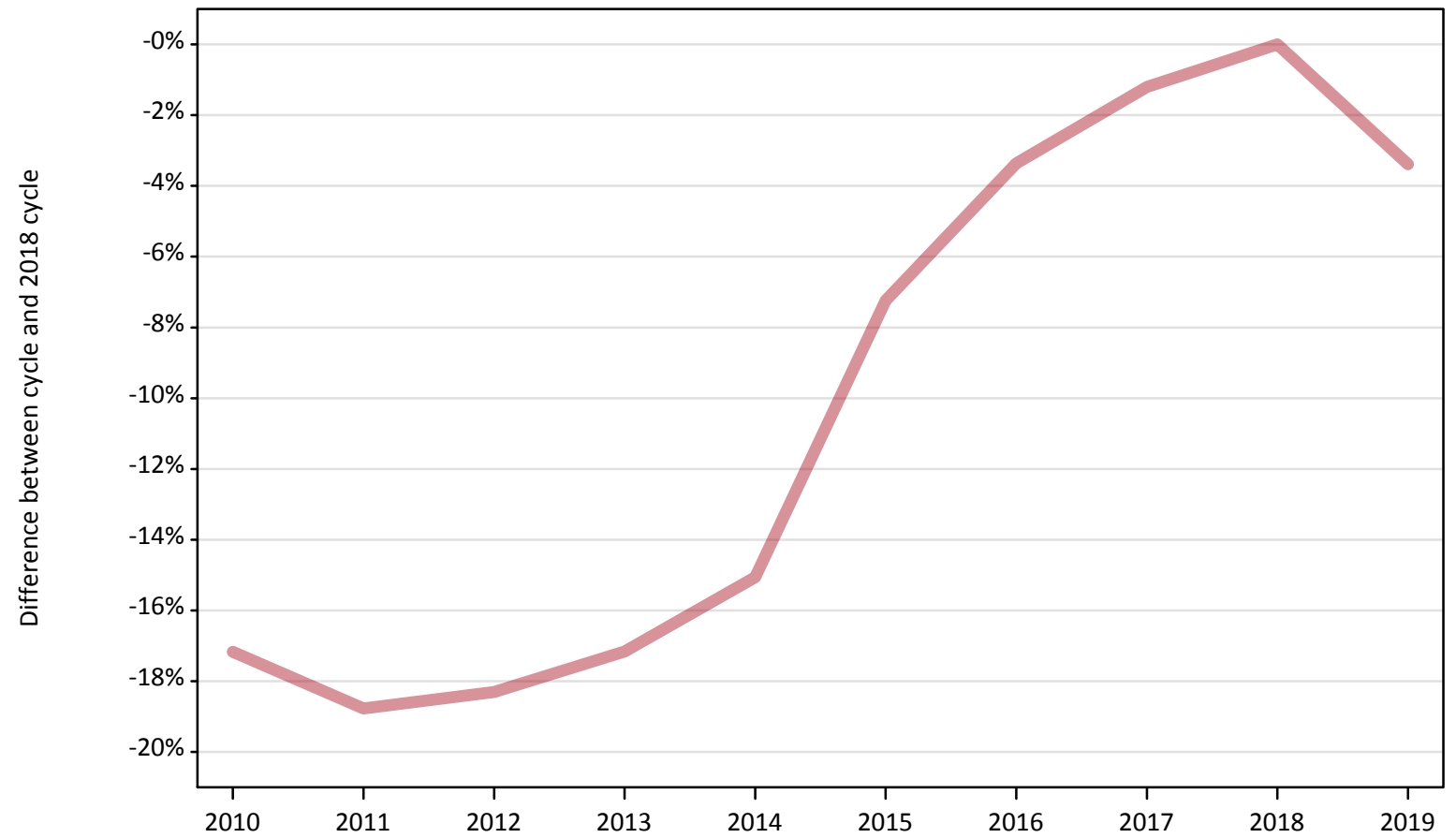
## A.2 Summary of applicants who are placed, holding offers or free to be placed in Clearing ( Scotland )



### A.3 All placed applicants from Scotland: 15 days after A level results day

All placed applicants: difference between cycle and 2018 cycle

Placed



Note: The percentage change is not plotted in the above chart for groups with fewer than 30 placed applicants in any one cycle.

#### A.4 All placed applicants from Scotland: 15 days after A level results day

All placed applicants: applicants at 15 days after A level results day

| Applicant type | Status | 2010   | 2011   | 2012   | 2013   | 2014   | 2015   | 2016   | 2017   | 2018   | 2019   |
|----------------|--------|--------|--------|--------|--------|--------|--------|--------|--------|--------|--------|
| All applicants | Placed | 28,730 | 28,180 | 28,340 | 28,740 | 29,470 | 32,180 | 33,520 | 34,270 | 34,690 | 33,520 |

#### A.5 All placed applicants from Scotland: 15 days after A level results day

All placed applicants: difference between cycle and 2018 cycle

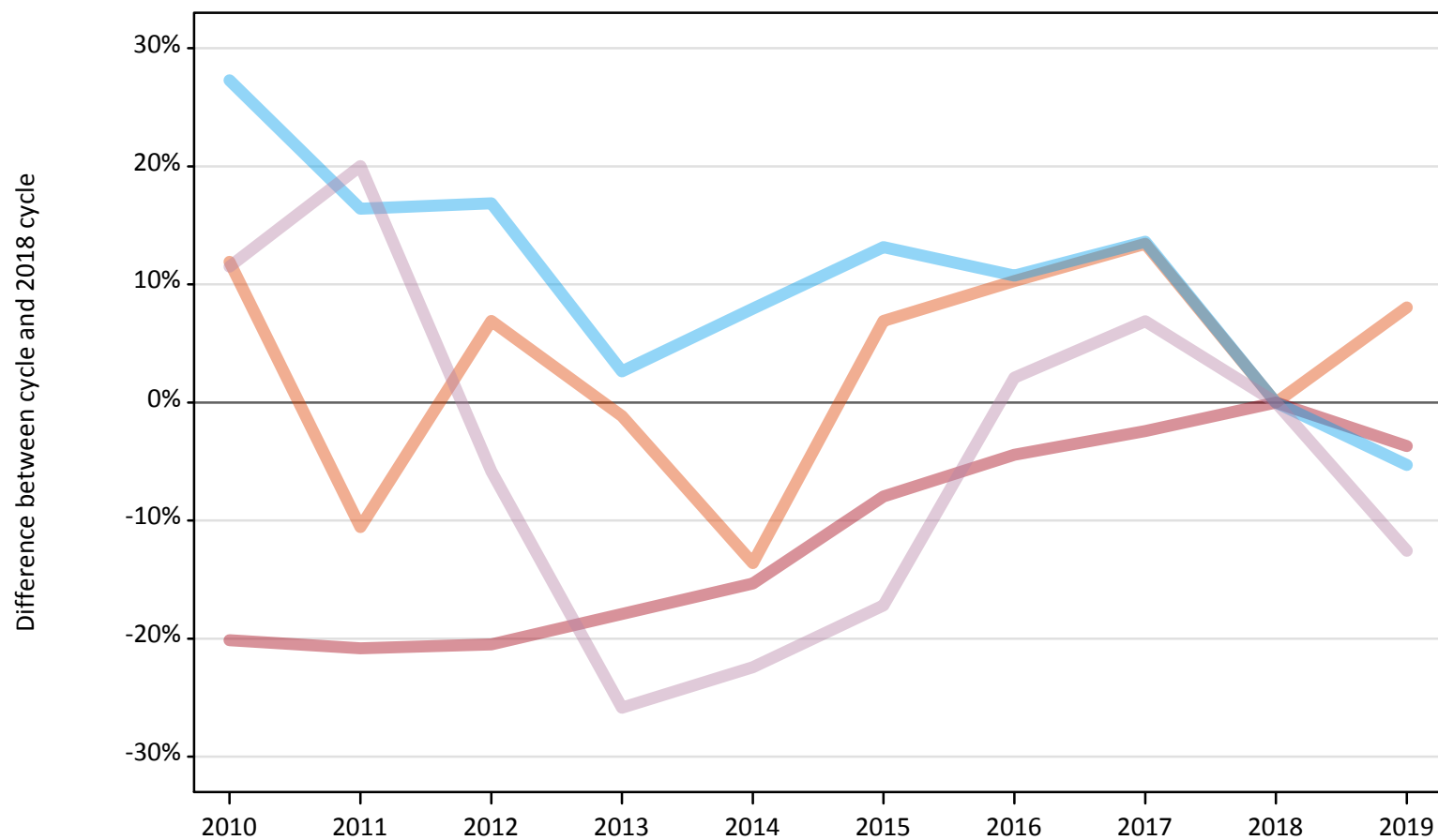
| Applicant type | Status | 2010 | 2011 | 2012 | 2013 | 2014 | 2015 | 2016 | 2017 | 2018 | 2019 |
|----------------|--------|------|------|------|------|------|------|------|------|------|------|
| All applicants | Placed | -17% | -19% | -18% | -17% | -15% | -7%  | -3%  | -1%  | 0%   | -3%  |

Note: The percentage change is not recorded in the above table for groups with fewer than 10 placed applicants in that cycle or in the 2018 cycle.

## A.6 Placed main scheme applicants from Scotland: 15 days after A level results day

All Main scheme placed routes (excluding Adjustment): difference between cycle and 2018 cycle

- Placed (Clearing)
- Placed (Firm)
- Placed (Insurance)
- Placed (Other)



Note: The percentage change is not plotted in the above chart for groups with fewer than 30 placed applicants in any one cycle.

### A.7 Placed main scheme applicants from Scotland: 15 days after A level results day

All Main scheme placed routes (excluding Adjustment): applicants at 15 days after A level results day

| Applicant type | Status             | 2010   | 2011   | 2012   | 2013   | 2014   | 2015   | 2016   | 2017   | 2018   | 2019   |
|----------------|--------------------|--------|--------|--------|--------|--------|--------|--------|--------|--------|--------|
| Main scheme    | Placed (Clearing)  | 1,250  | 1,000  | 1,190  | 1,100  | 970    | 1,190  | 1,230  | 1,270  | 1,120  | 1,210  |
|                | Placed (Firm)      | 24,920 | 24,700 | 24,800 | 25,610 | 26,410 | 28,710 | 29,820 | 30,440 | 31,200 | 30,050 |
|                | Placed (Insurance) | 1,680  | 1,540  | 1,550  | 1,360  | 1,430  | 1,500  | 1,470  | 1,500  | 1,320  | 1,250  |
|                | Placed (Other)     | 750    | 800    | 630    | 500    | 520    | 550    | 680    | 720    | 670    | 590    |

### A.8 Placed main scheme applicants from Scotland: 15 days after A level results day

All Main scheme placed routes (excluding Adjustment): difference between cycle and 2018 cycle

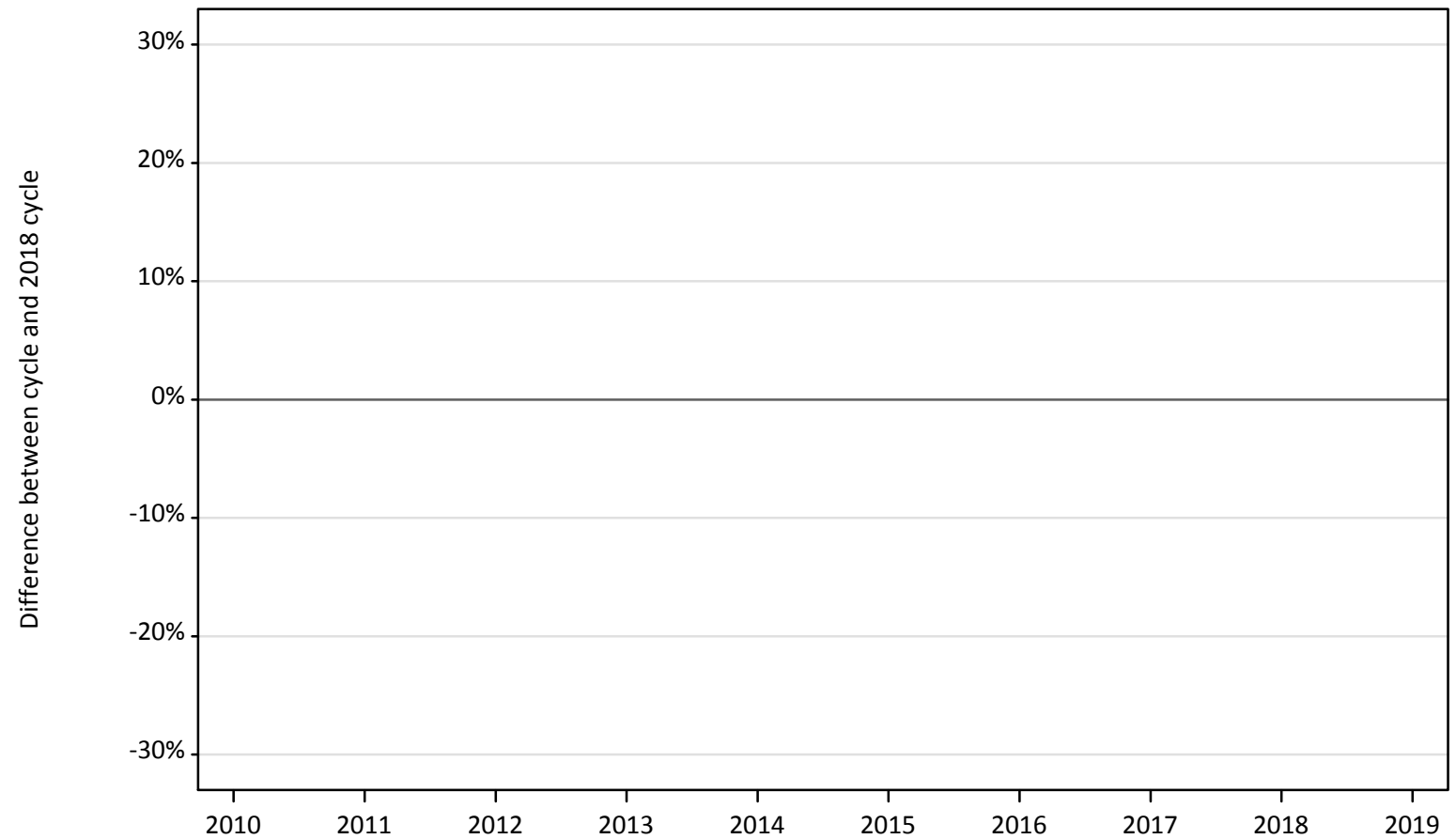
| Applicant type | Status             | 2010 | 2011 | 2012 | 2013 | 2014 | 2015 | 2016 | 2017 | 2018 | 2019 |
|----------------|--------------------|------|------|------|------|------|------|------|------|------|------|
| Main scheme    | Placed (Clearing)  | 12%  | -11% | 7%   | -1%  | -14% | 7%   | 10%  | 13%  | 0%   | 8%   |
|                | Placed (Firm)      | -20% | -21% | -21% | -18% | -15% | -8%  | -4%  | -2%  | 0%   | -4%  |
|                | Placed (Insurance) | 27%  | 16%  | 17%  | 3%   | 8%   | 13%  | 11%  | 14%  | 0%   | -5%  |
|                | Placed (Other)     | 12%  | 20%  | -6%  | -26% | -22% | -17% | 2%   | 7%   | 0%   | -13% |

Note: The percentage change is not recorded in the above table for groups with fewer than 10 placed applicants in that cycle or in the 2018 cycle.

### A.9 Main scheme applicants placed through adjustment: 15 days after A level results day

Placed through adjustment: difference between cycle and 2018 cycle

Placed (Adjustment)



Note: The percentage change is not plotted in the above chart for groups with fewer than 30 placed applicants in any one cycle.

### A.10 Main scheme applicants placed through adjustment: 15 days after A level results day

Placed through adjustment: applicants at 15 days after A level results day

| Applicant type | Status              | 2010 | 2011 | 2012 | 2013 | 2014 | 2015 | 2016 | 2017 | 2018 | 2019 |
|----------------|---------------------|------|------|------|------|------|------|------|------|------|------|
| Main scheme    | Placed (Adjustment) | 0    | 10   | 20   | 10   | 10   | 10   | 10   | 0    | 10   | 0    |

### A.11 Main scheme applicants placed through adjustment: 15 days after A level results day

Placed through adjustment: difference between cycle and 2018 cycle

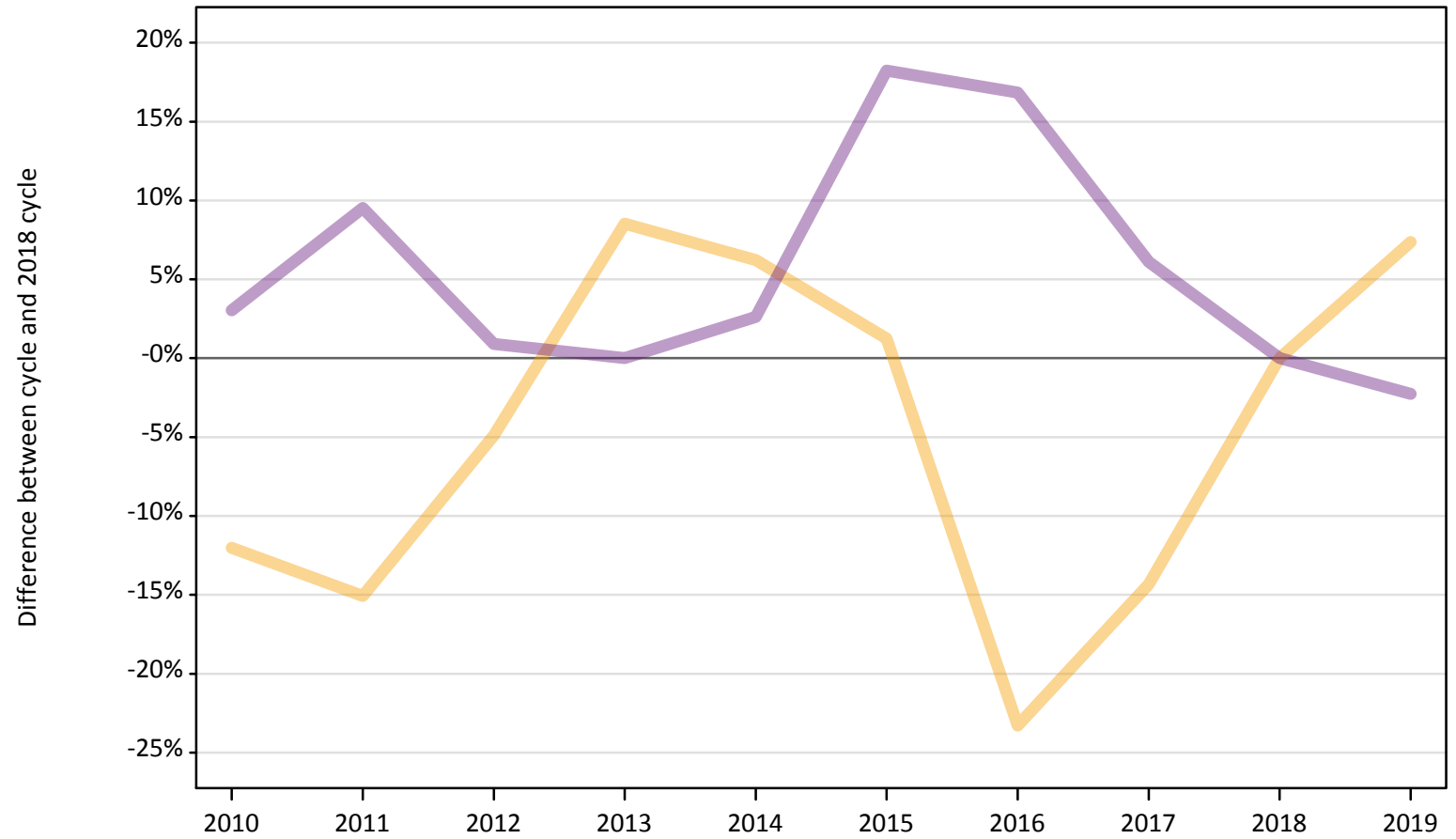
| Applicant type | Status              | 2010 | 2011 | 2012 | 2013 | 2014 | 2015 | 2016 | 2017 | 2018 | 2019 |
|----------------|---------------------|------|------|------|------|------|------|------|------|------|------|
| Main scheme    | Placed (Adjustment) |      |      |      |      |      |      |      |      |      |      |

Note: The percentage change is not recorded in the above table for groups with fewer than 10 placed applicants in that cycle or in the 2018 cycle.

### A.12 Main scheme applicants not currently placed from Scotland: 15 days after A level results day

Applicants in unplaced states: difference between cycle and 2018 cycle

— Holding offer  
— Free to be placed in Clearing



Note: The percentage change is not plotted in the above chart for groups with fewer than 30 unplaced applicants in any one cycle.



### A.13 Main scheme applicants not currently placed from Scotland: 15 days after A level results day

Applicants in unplaced states: applicants at 15 days after A level results day

| Applicant type | Status                        | 2010   | 2011   | 2012   | 2013   | 2014   | 2015   | 2016   | 2017   | 2018   | 2019   |
|----------------|-------------------------------|--------|--------|--------|--------|--------|--------|--------|--------|--------|--------|
| Main scheme    | Holding offer                 | 1,060  | 1,030  | 1,150  | 1,310  | 1,280  | 1,220  | 930    | 1,030  | 1,210  | 1,300  |
|                | Free to be placed in Clearing | 12,880 | 13,680 | 12,610 | 12,500 | 12,820 | 14,770 | 14,600 | 13,260 | 12,500 | 12,210 |

### A.14 Main scheme applicants not currently placed from Scotland: 15 days after A level results day

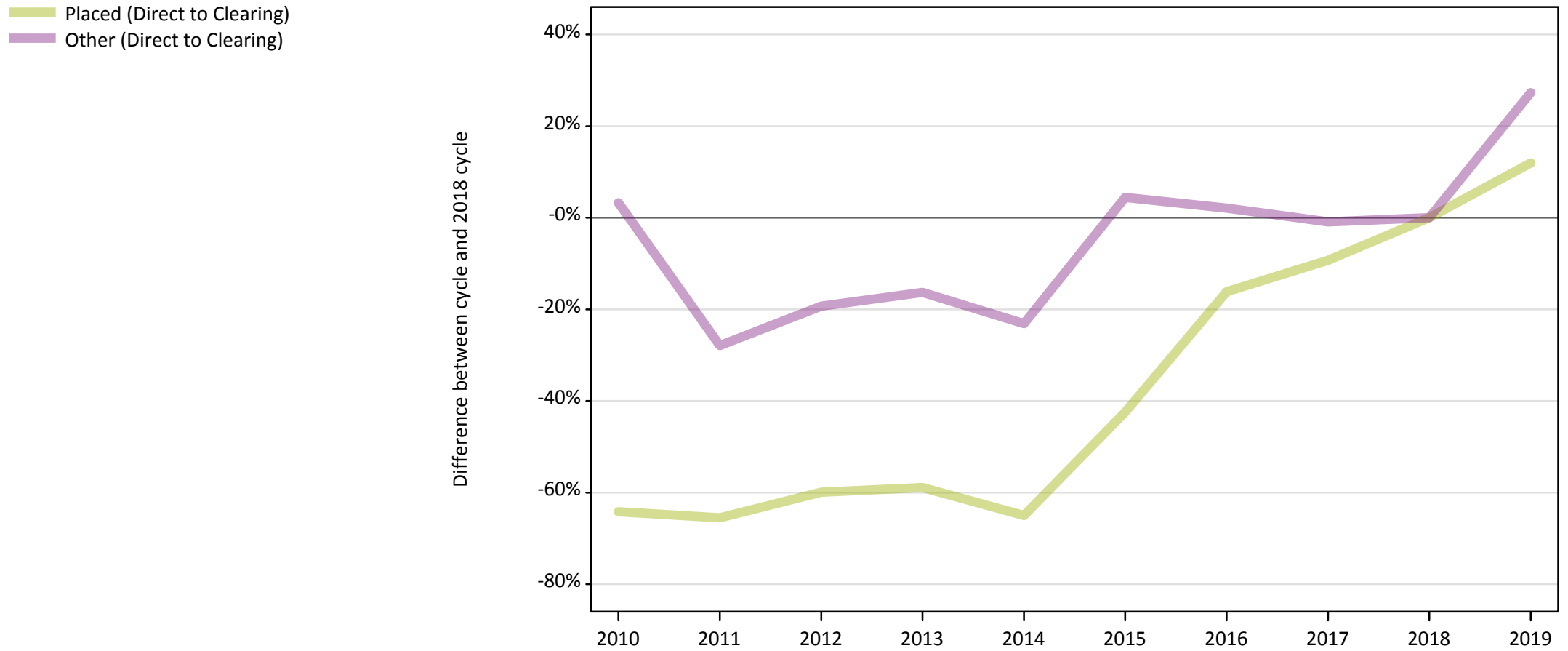
Applicants in unplaced states: difference between cycle and 2018 cycle

| Applicant type | Status                        | 2010 | 2011 | 2012 | 2013 | 2014 | 2015 | 2016 | 2017 | 2018 | 2019 |
|----------------|-------------------------------|------|------|------|------|------|------|------|------|------|------|
| Main scheme    | Holding offer                 | -12% | -15% | -5%  | 9%   | 6%   | 1%   | -23% | -14% | 0%   | 7%   |
|                | Free to be placed in Clearing | 3%   | 10%  | 1%   | 0%   | 3%   | 18%  | 17%  | 6%   | 0%   | -2%  |

Note: The percentage change is not recorded in the above table for groups with fewer than 10 unplaced applicants in that cycle or in the 2018 cycle.

### A.15 Direct to Clearing applicants from Scotland: 15 days after A level results day

Direct to Clearing: difference between cycle and 2018 cycle



Note: The percentage change is not plotted in the above chart for groups with fewer than 30 placed applicants in any one cycle.

### A.16 Direct to Clearing applicants from Scotland: 15 days after A level results day

Direct to Clearing 15 days after A level results day

| Applicant type     | Status                      | 2010 | 2011 | 2012 | 2013 | 2014 | 2015 | 2016 | 2017 | 2018 | 2019 |
|--------------------|-----------------------------|------|------|------|------|------|------|------|------|------|------|
| Direct to Clearing | Placed (Direct to Clearing) | 140  | 130  | 150  | 160  | 130  | 220  | 320  | 340  | 380  | 420  |
|                    | Other (Direct to Clearing)  | 350  | 240  | 270  | 280  | 260  | 350  | 340  | 330  | 340  | 430  |

### A.17 Direct to Clearing applicants from Scotland: 15 days after A level results day

Direct to Clearing: difference between cycle and 2018 cycle

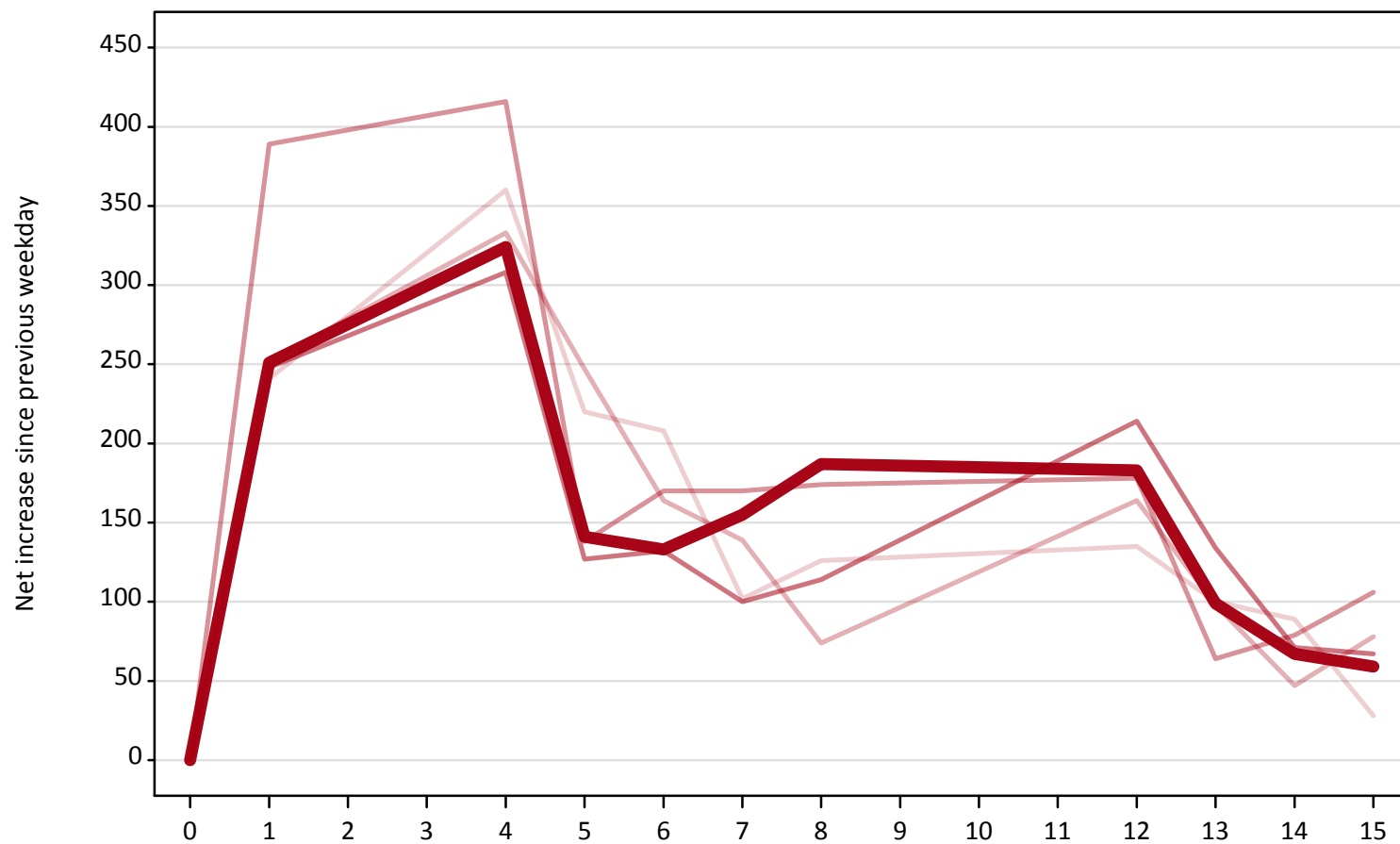
| Applicant type     | Status                      | 2010 | 2011 | 2012 | 2013 | 2014 | 2015 | 2016 | 2017 | 2018 | 2019 |
|--------------------|-----------------------------|------|------|------|------|------|------|------|------|------|------|
| Direct to Clearing | Placed (Direct to Clearing) | -64% | -66% | -60% | -59% | -65% | -42% | -16% | -9%  | 0%   | 12%  |
|                    | Other (Direct to Clearing)  | 3%   | -28% | -19% | -16% | -23% | 4%   | 2%   | -1%  | 0%   | 27%  |

Note: The percentage change is not recorded in the above table for groups with fewer than 10 placed applicants in that cycle or in the 2018 cycle.

### A.18 All Placed: Daily net change (from Scotland)

Net increase since previous weekday (2019 cycle up to 15 days after A level results day)

- 2015
- 2016
- 2017
- 2018
- 2019**

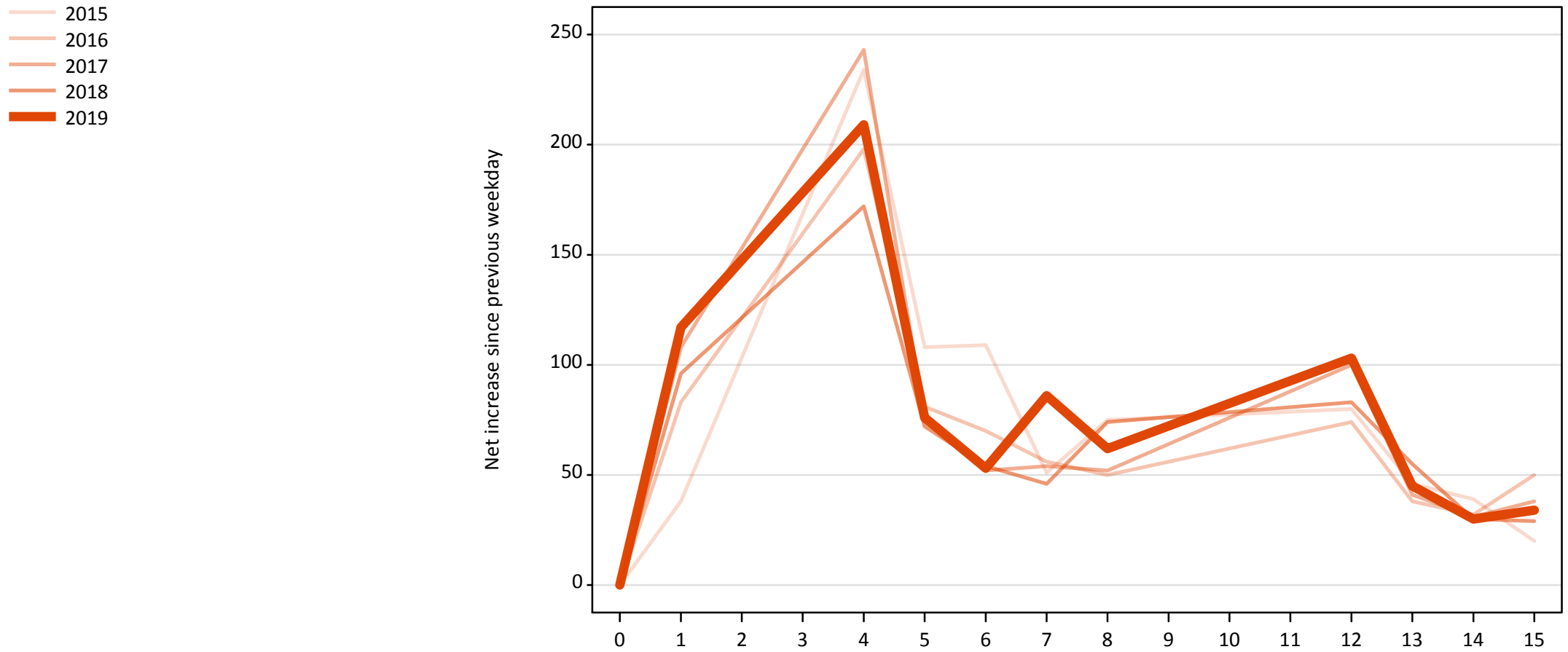


**A.19 All Placed: Daily net change (from Scotland)**

Net increase since previous weekday (2019 cycle up to 15 days after A level results day)

| Applicant status, days since A level results day | 2015 | 2016 | 2017 | 2018 | 2019 |     |
|--|------|------|------|------|------|-----|
| All Placed                                       | 0    | 0    | 0    | 0    | 0    |     |
|  | 1    | 240  | 250  | 390  | 250  | 250 |
|  | 4    | 360  | 330  | 420  | 310  | 320 |
|  | 5    | 220  | 250  | 140  | 130  | 140 |
|  | 6    | 210  | 160  | 170  | 130  | 130 |
|  | 7    | 100  | 140  | 170  | 100  | 160 |
|  | 8    | 130  | 70   | 170  | 110  | 190 |
|  | 12   | 140  | 160  | 180  | 210  | 180 |
|  | 13   | 100  | 100  | 60   | 130  | 100 |
|  | 14   | 90   | 50   | 80   | 70   | 70  |
|  | 15   | 30   | 80   | 110  | 70   | 60  |

**A.20 Placed through Clearing only: Daily net change (from Scotland)**  
Net increase since previous weekday (2019 cycle up to 15 days after A level results day)



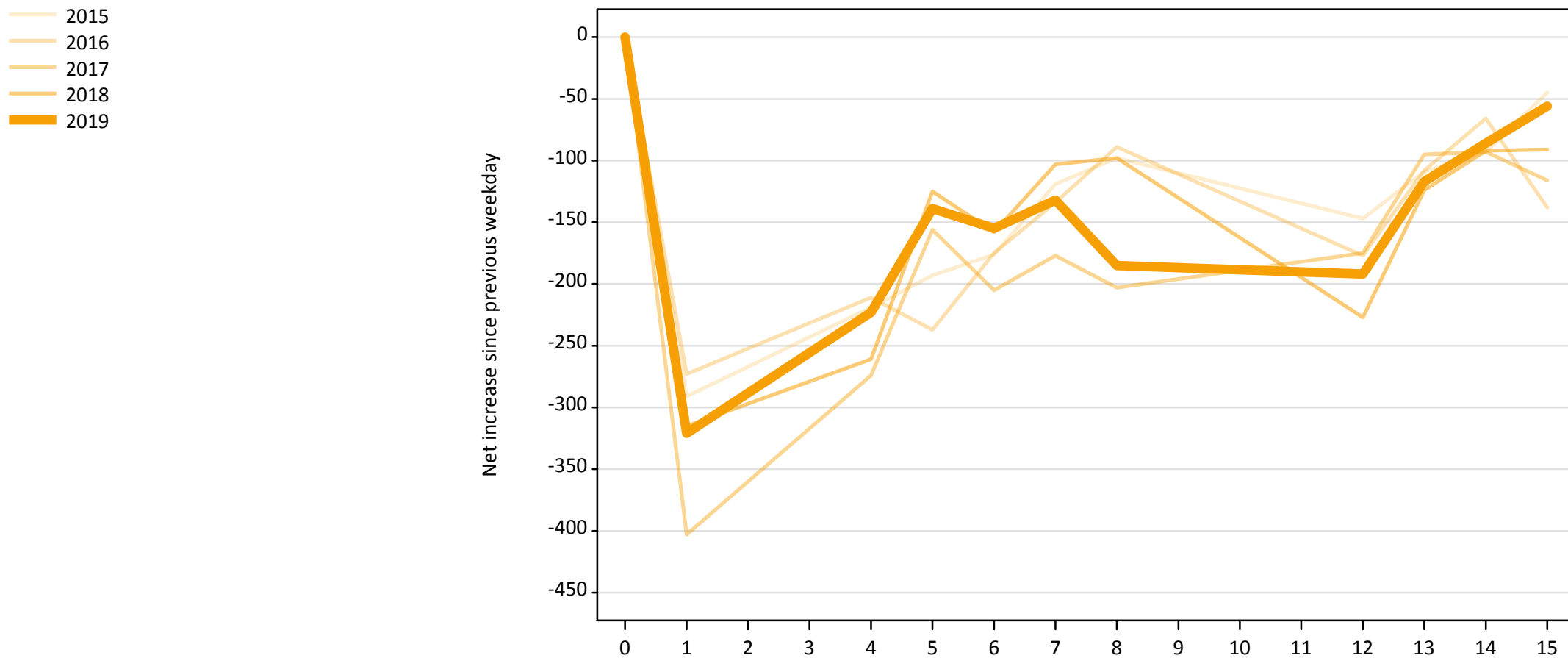
### A.21 Placed through Clearing only: Daily net change (from Scotland)

Net increase since previous weekday (2019 cycle up to 15 days after A level results day)

| Applicant status, days since A level results day |    | 2015 | 2016 | 2017 | 2018 | 2019 |
|--|----|------|------|------|------|------|
| Placed through Clearing only                     | 0  | 0    | 0    | 0    | 0    | 0    |
|  | 1  | 40   | 80   | 110  | 100  | 120  |
|  | 4  | 230  | 200  | 240  | 170  | 210  |
|  | 5  | 110  | 80   | 80   | 70   | 80   |
|  | 6  | 110  | 70   | 50   | 50   | 50   |
|  | 7  | 50   | 60   | 50   | 50   | 90   |
|  | 8  | 80   | 50   | 50   | 70   | 60   |
|  | 12 | 80   | 70   | 100  | 80   | 100  |
|  | 13 | 50   | 40   | 40   | 60   | 50   |
|  | 14 | 40   | 30   | 30   | 30   | 30   |
|  | 15 | 20   | 50   | 40   | 30   | 30   |

### A.22 Holding Offer: Daily net change (from Scotland)

Net increase since previous weekday (2019 cycle up to 15 days after A level results day)





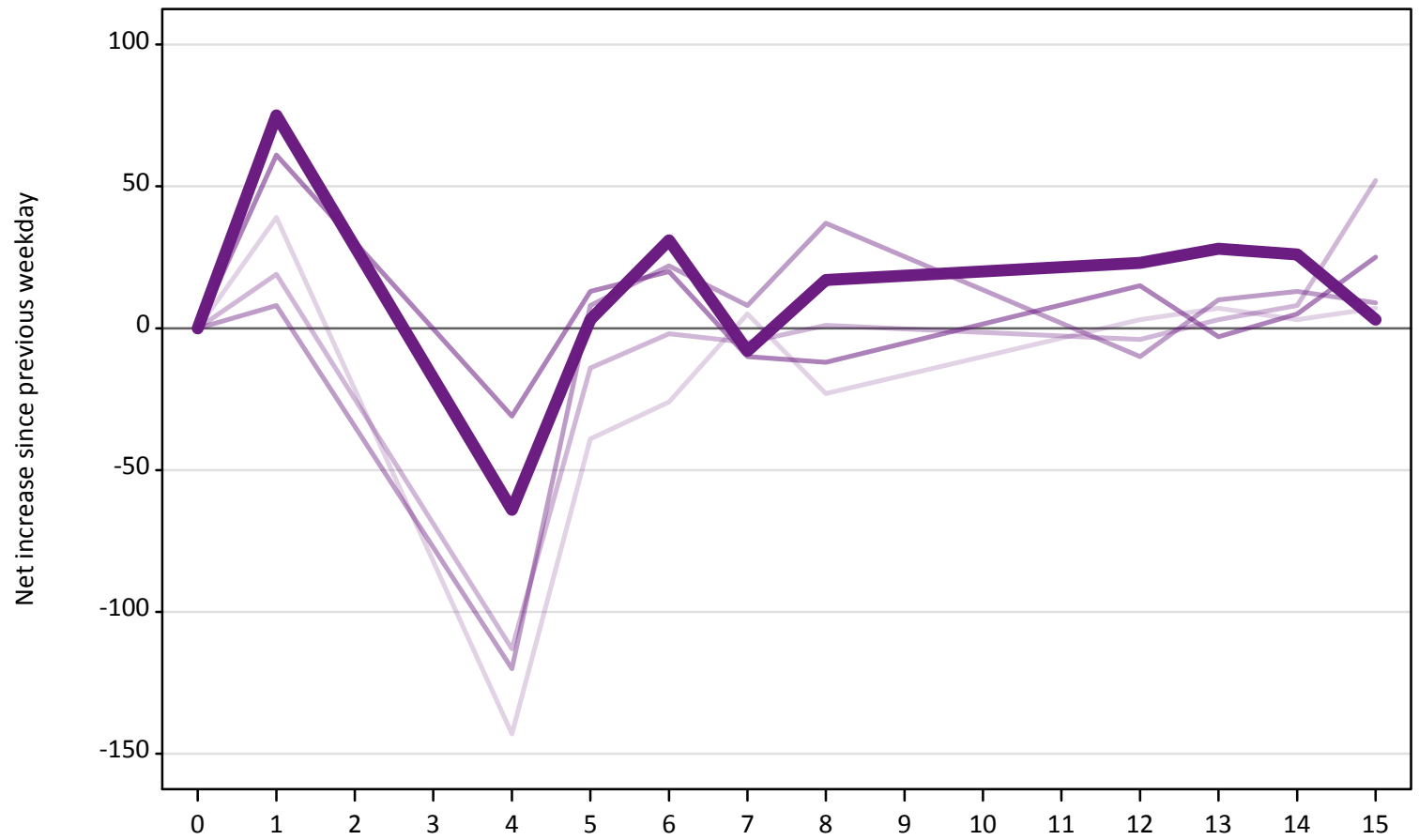
### A.23 Holding Offer: Daily net change (from Scotland)

Net increase since previous weekday (2019 cycle up to 15 days after A level results day)

| Applicant status, days since A level results day |    | 2015 | 2016 | 2017 | 2018 | 2019 |
|--|----|------|------|------|------|------|
| Holding Offer                                    | 0  | 0    | 0    | 0    | 0    | 0    |
|  | 1  | -290 | -270 | -400 | -320 | -320 |
|  | 4  | -220 | -210 | -270 | -260 | -220 |
|  | 5  | -190 | -240 | -160 | -130 | -140 |
|  | 6  | -180 | -180 | -210 | -160 | -160 |
|  | 7  | -120 | -130 | -180 | -100 | -130 |
|  | 8  | -100 | -90  | -200 | -100 | -190 |
|  | 12 | -150 | -180 | -180 | -230 | -190 |
|  | 13 | -110 | -110 | -100 | -120 | -120 |
|  | 14 | -90  | -70  | -90  | -90  | -90  |
|  | 15 | -50  | -140 | -120 | -90  | -60  |

**A.24 Free to be placed in Clearing: Daily net change (from Scotland)**  
Net increase since previous weekday (2019 cycle up to 15 days after A level results day)

- 2015
- 2016
- 2017
- 2018
- 2019



**A.25 Free to be placed in Clearing: Daily net change (from Scotland)**

Net increase since previous weekday (2019 cycle up to 15 days after A level results day)

| Applicant status, days since A level results day |    | 2015 | 2016 | 2017 | 2018 | 2019 |
|--|----|------|------|------|------|------|
| Free to be placed in Clearing                    | 0  | 0    | 0    | 0    | 0    | 0    |
|  | 1  | 40   | 20   | 10   | 60   | 80   |
|  | 4  | -140 | -110 | -120 | -30  | -60  |
|  | 5  | -40  | -10  | 10   | 10   | 0    |
|  | 6  | -30  | 0    | 20   | 20   | 30   |
|  | 7  | 10   | -10  | 10   | -10  | -10  |
|  | 8  | -20  | 0    | 40   | -10  | 20   |
|  | 12 | 0    | 0    | -10  | 20   | 20   |
|  | 13 | 10   | 0    | 10   | 0    | 30   |
|  | 14 | 0    | 10   | 10   | 10   | 30   |
|  | 15 | 10   | 50   | 10   | 30   | 0    |