

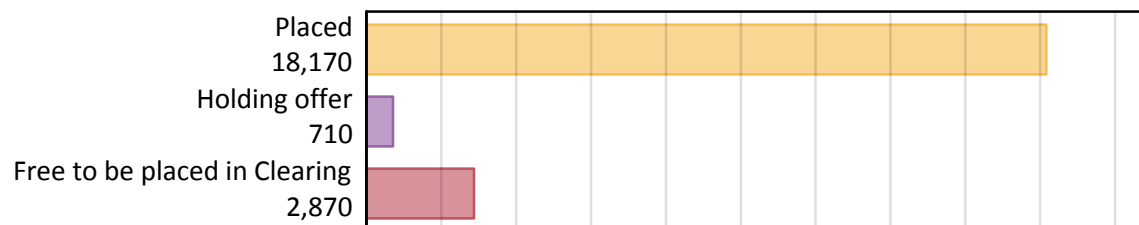
Daily Clearing Analysis: Overview

Analysis at 00:05 on Friday 30 August 2019 (15 days after A level results day)

A.1 Applicants by type and status from Wales, 2019 cycle

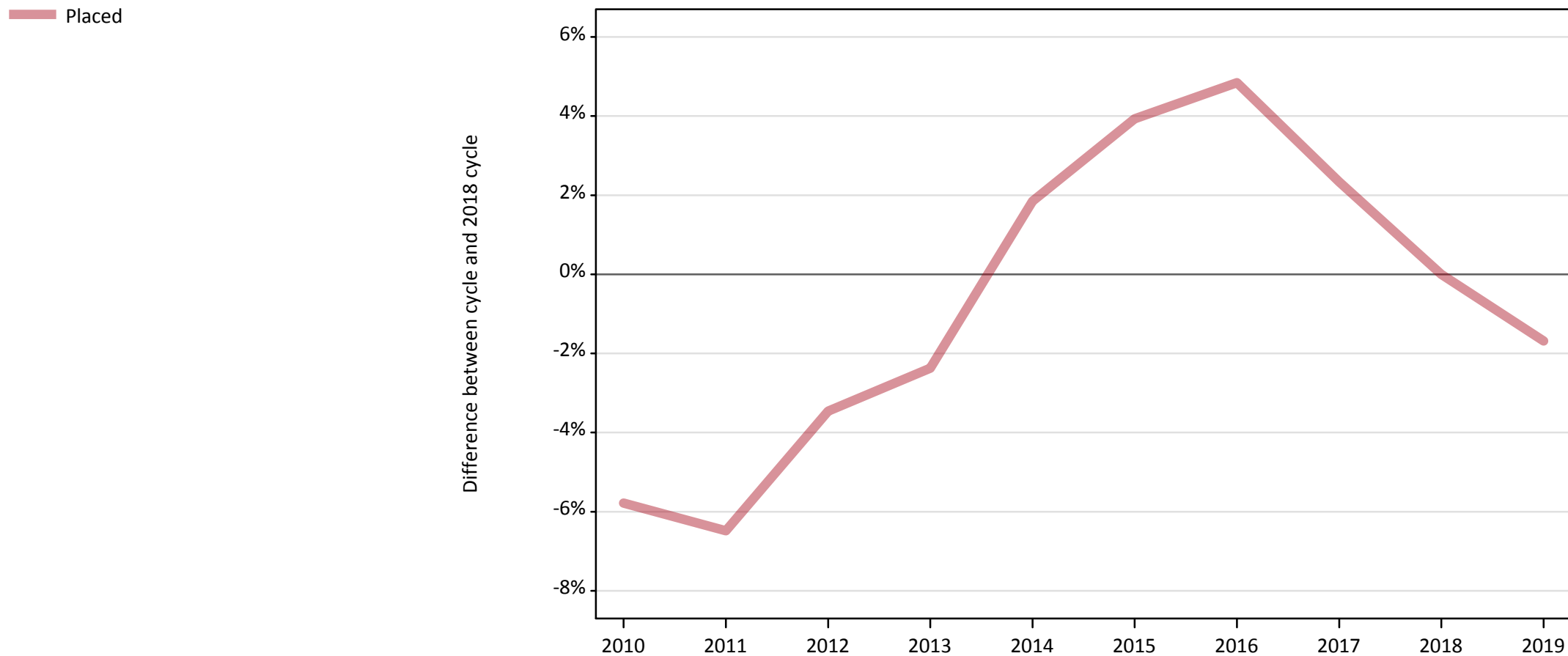
Applicant type	Status	2019
Main scheme	Placed (Clearing)	1,240
	Placed (Adjustment)	10
	Placed (Firm)	15,100
	Placed (Insurance)	810
	Placed (Other)	450
	Holding offer	710
	Free to be placed in Clearing	2,870
Direct to Clearing	Placed (Direct to Clearing)	560
	Other (Direct to Clearing)	270
All applicants	Placed	18,170

A.2 Summary of applicants who are placed, holding offers or free to be placed in Clearing (Wales)



A.3 All placed applicants from Wales: 15 days after A level results day

All placed applicants: difference between cycle and 2018 cycle



Note: The percentage change is not plotted in the above chart for groups with fewer than 30 placed applicants in any one cycle.

A.4 All placed applicants from Wales: 15 days after A level results day

All placed applicants: applicants at 15 days after A level results day

Applicant type	Status	2010	2011	2012	2013	2014	2015	2016	2017	2018	2019
All applicants	Placed	17,410	17,280	17,840	18,040	18,820	19,210	19,370	18,910	18,480	18,170

A.5 All placed applicants from Wales: 15 days after A level results day

All placed applicants: difference between cycle and 2018 cycle

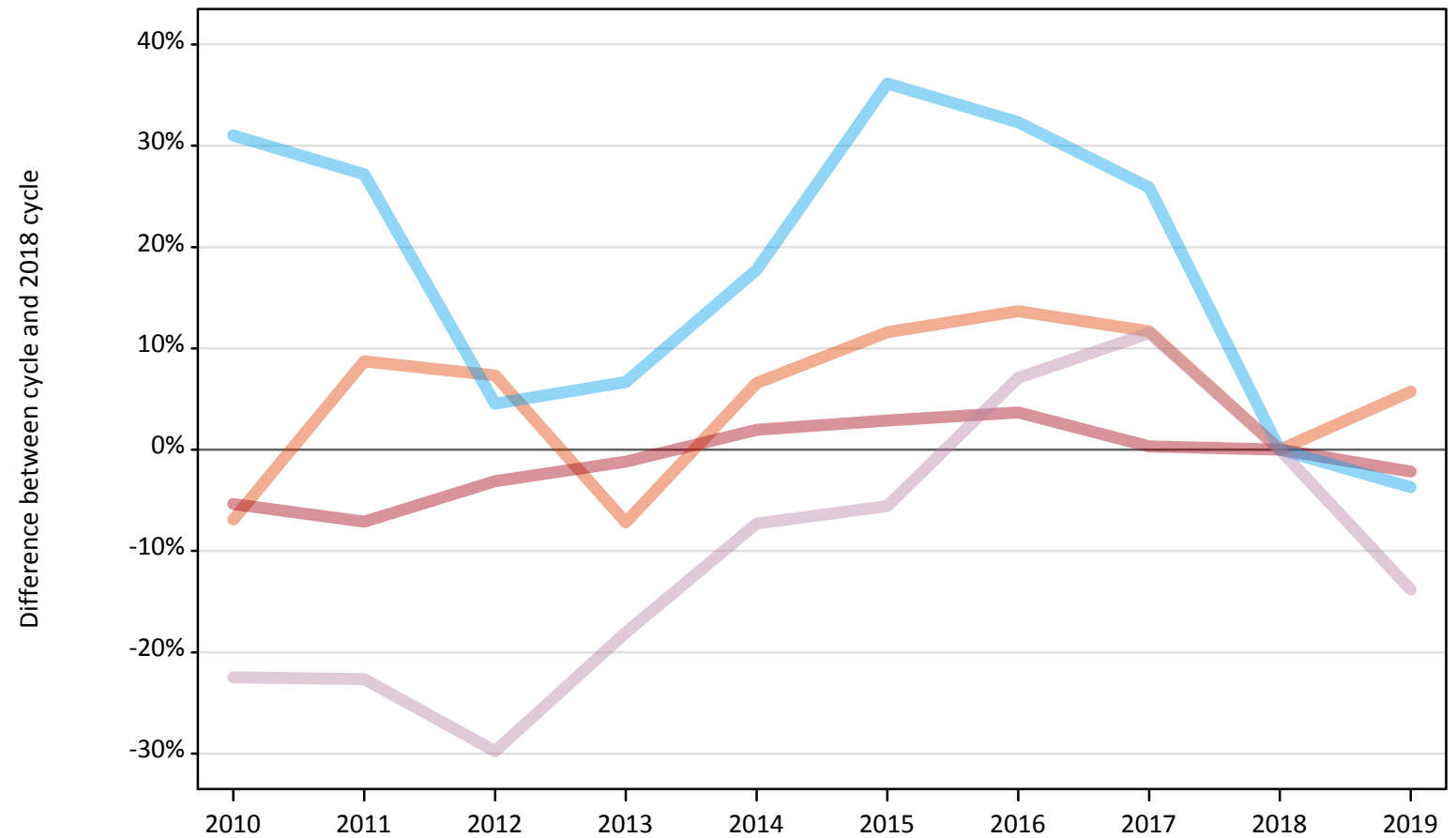
Applicant type	Status	2010	2011	2012	2013	2014	2015	2016	2017	2018	2019
All applicants	Placed	-6%	-6%	-3%	-2%	2%	4%	5%	2%	0%	-2%

Note: The percentage change is not recorded in the above table for groups with fewer than 10 placed applicants in that cycle or in the 2018 cycle.

A.6 Placed main scheme applicants from Wales: 15 days after A level results day

All Main scheme placed routes (excluding Adjustment): difference between cycle and 2018 cycle

- Placed (Clearing)
- Placed (Firm)
- Placed (Insurance)
- Placed (Other)



Note: The percentage change is not plotted in the above chart for groups with fewer than 30 placed applicants in any one cycle.

A.7 Placed main scheme applicants from Wales: 15 days after A level results day

All Main scheme placed routes (excluding Adjustment): applicants at 15 days after A level results day

Applicant type	Status	2010	2011	2012	2013	2014	2015	2016	2017	2018	2019
Main scheme	Placed (Clearing)	1,090	1,270	1,260	1,090	1,250	1,310	1,330	1,310	1,170	1,240
	Placed (Firm)	14,610	14,330	14,950	15,250	15,740	15,880	16,000	15,480	15,430	15,100
	Placed (Insurance)	1,100	1,070	880	890	990	1,140	1,110	1,060	840	810
	Placed (Other)	400	400	370	430	480	490	560	580	520	450

A.8 Placed main scheme applicants from Wales: 15 days after A level results day

All Main scheme placed routes (excluding Adjustment): difference between cycle and 2018 cycle

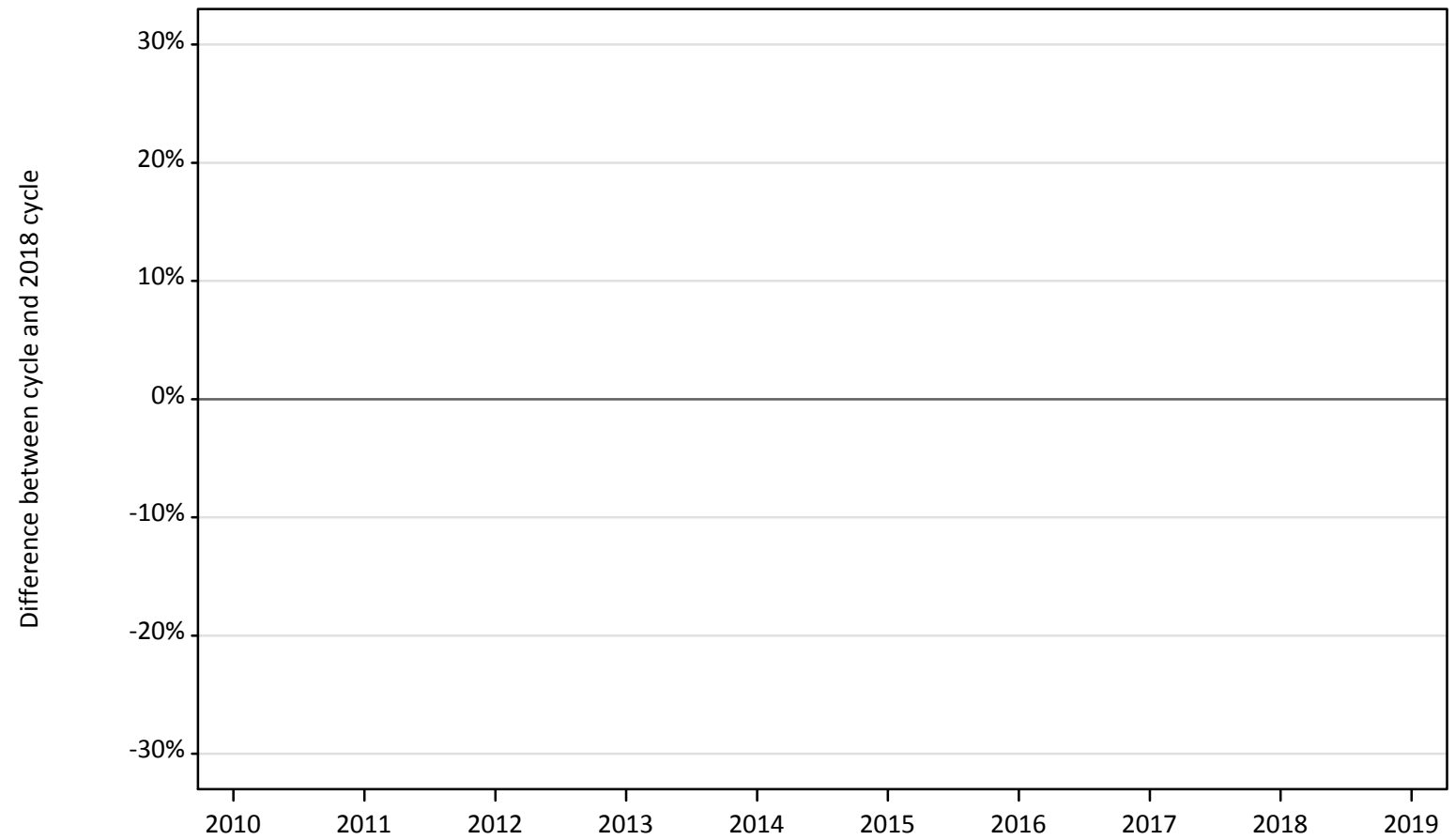
Applicant type	Status	2010	2011	2012	2013	2014	2015	2016	2017	2018	2019
Main scheme	Placed (Clearing)	-7%	9%	7%	-7%	7%	12%	14%	12%	0%	6%
	Placed (Firm)	-5%	-7%	-3%	-1%	2%	3%	4%	0%	0%	-2%
	Placed (Insurance)	31%	27%	5%	7%	18%	36%	32%	26%	0%	-4%
	Placed (Other)	-22%	-23%	-30%	-18%	-7%	-6%	7%	12%	0%	-14%

Note: The percentage change is not recorded in the above table for groups with fewer than 10 placed applicants in that cycle or in the 2018 cycle.

A.9 Main scheme applicants placed through adjustment: 15 days after A level results day

Placed through adjustment: difference between cycle and 2018 cycle

Placed (Adjustment)



Note: The percentage change is not plotted in the above chart for groups with fewer than 30 placed applicants in any one cycle.

A.10 Main scheme applicants placed through adjustment: 15 days after A level results day

Placed through adjustment: applicants at 15 days after A level results day

Applicant type	Status	2010	2011	2012	2013	2014	2015	2016	2017	2018	2019
Main scheme	Placed (Adjustment)	10	10	30	30	30	30	20	30	30	10

A.11 Main scheme applicants placed through adjustment: 15 days after A level results day

Placed through adjustment: difference between cycle and 2018 cycle

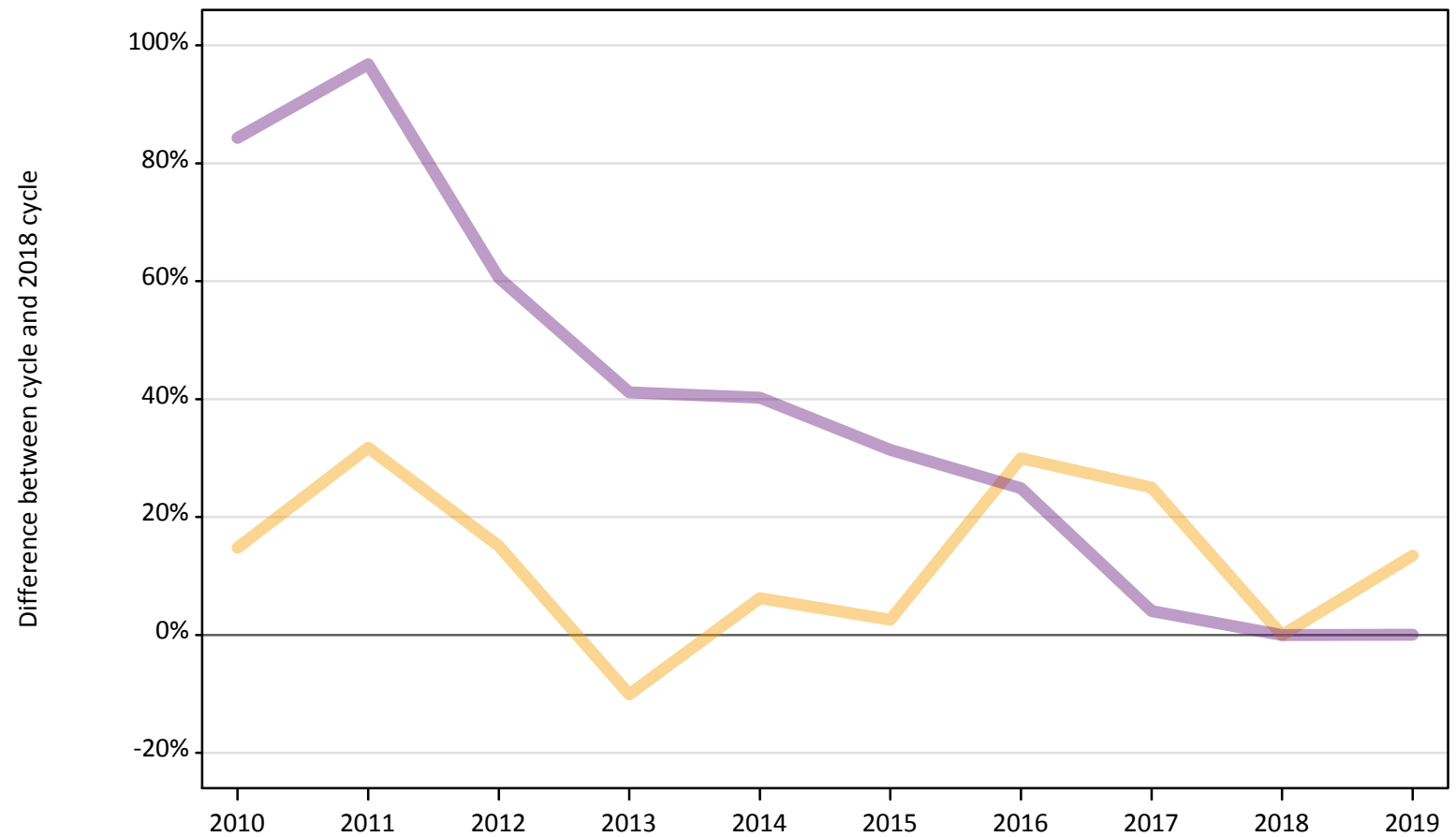
Applicant type	Status	2010	2011	2012	2013	2014	2015	2016	2017	2018	2019
Main scheme	Placed (Adjustment)	-61%	-70%	-12%	-21%	-3%	-18%	-45%	-3%	0%	-61%

Note: The percentage change is not recorded in the above table for groups with fewer than 10 placed applicants in that cycle or in the 2018 cycle.

A.12 Main scheme applicants not currently placed from Wales: 15 days after A level results day

Applicants in unplaced states: difference between cycle and 2018 cycle

— Holding offer
— Free to be placed in Clearing



Note: The percentage change is not plotted in the above chart for groups with fewer than 30 unplaced applicants in any one cycle.

A.13 Main scheme applicants not currently placed from Wales: 15 days after A level results day

Applicants in unplaced states: applicants at 15 days after A level results day

Applicant type	Status	2010	2011	2012	2013	2014	2015	2016	2017	2018	2019
Main scheme	Holding offer	720	820	720	560	660	640	810	780	620	710
	Free to be placed in Clearing	5,290	5,650	4,610	4,050	4,030	3,770	3,590	2,990	2,870	2,870

A.14 Main scheme applicants not currently placed from Wales: 15 days after A level results day

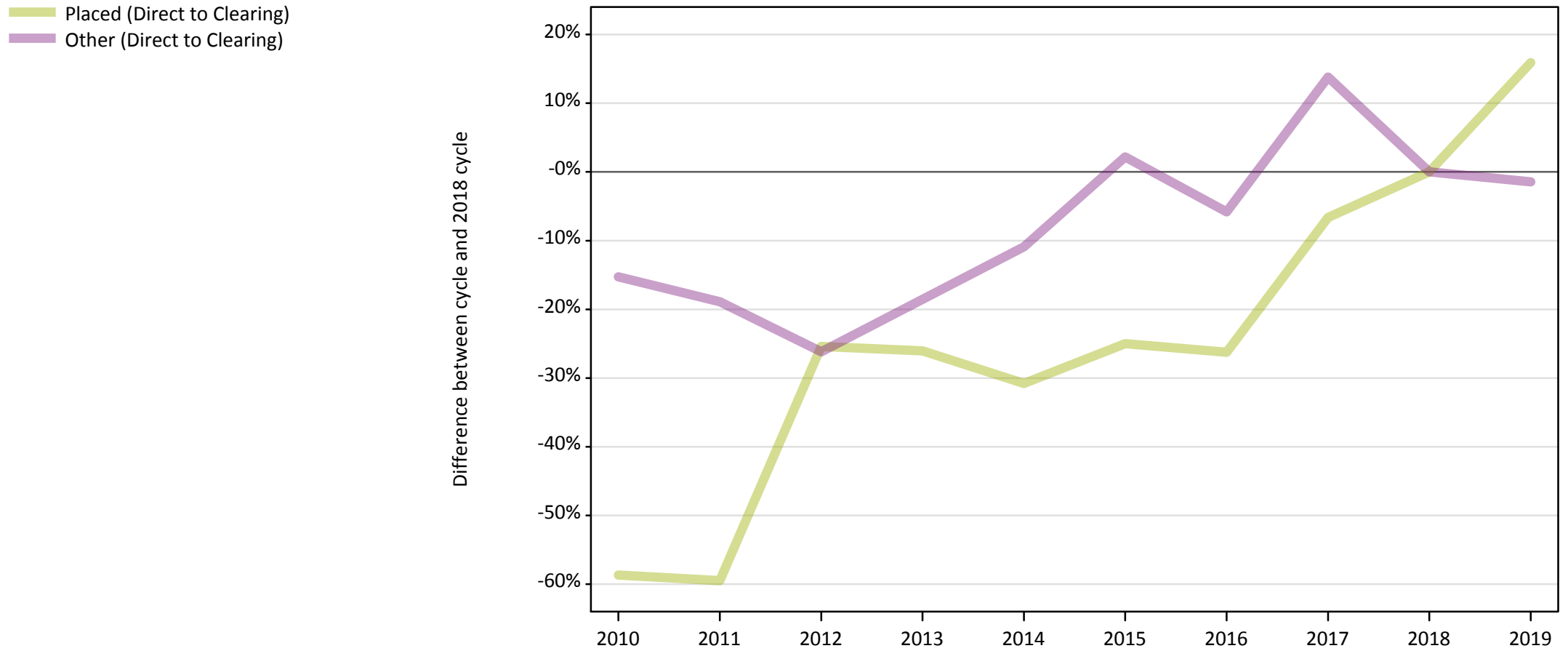
Applicants in unplaced states: difference between cycle and 2018 cycle

Applicant type	Status	2010	2011	2012	2013	2014	2015	2016	2017	2018	2019
Main scheme	Holding offer	15%	32%	15%	-10%	6%	3%	30%	25%	0%	13%
	Free to be placed in Clearing	84%	97%	61%	41%	40%	31%	25%	4%	0%	0%

Note: The percentage change is not recorded in the above table for groups with fewer than 10 unplaced applicants in that cycle or in the 2018 cycle.

A.15 Direct to Clearing applicants from Wales: 15 days after A level results day

Direct to Clearing: difference between cycle and 2018 cycle



Note: The percentage change is not plotted in the above chart for groups with fewer than 30 placed applicants in any one cycle.

A.16 Direct to Clearing applicants from Wales: 15 days after A level results day

Direct to Clearing 15 days after A level results day

Applicant type	Status	2010	2011	2012	2013	2014	2015	2016	2017	2018	2019
Direct to Clearing	Placed (Direct to Clearing)	200	200	360	360	340	360	360	450	480	560
	Other (Direct to Clearing)	230	220	200	220	250	280	260	310	280	270

A.17 Direct to Clearing applicants from Wales: 15 days after A level results day

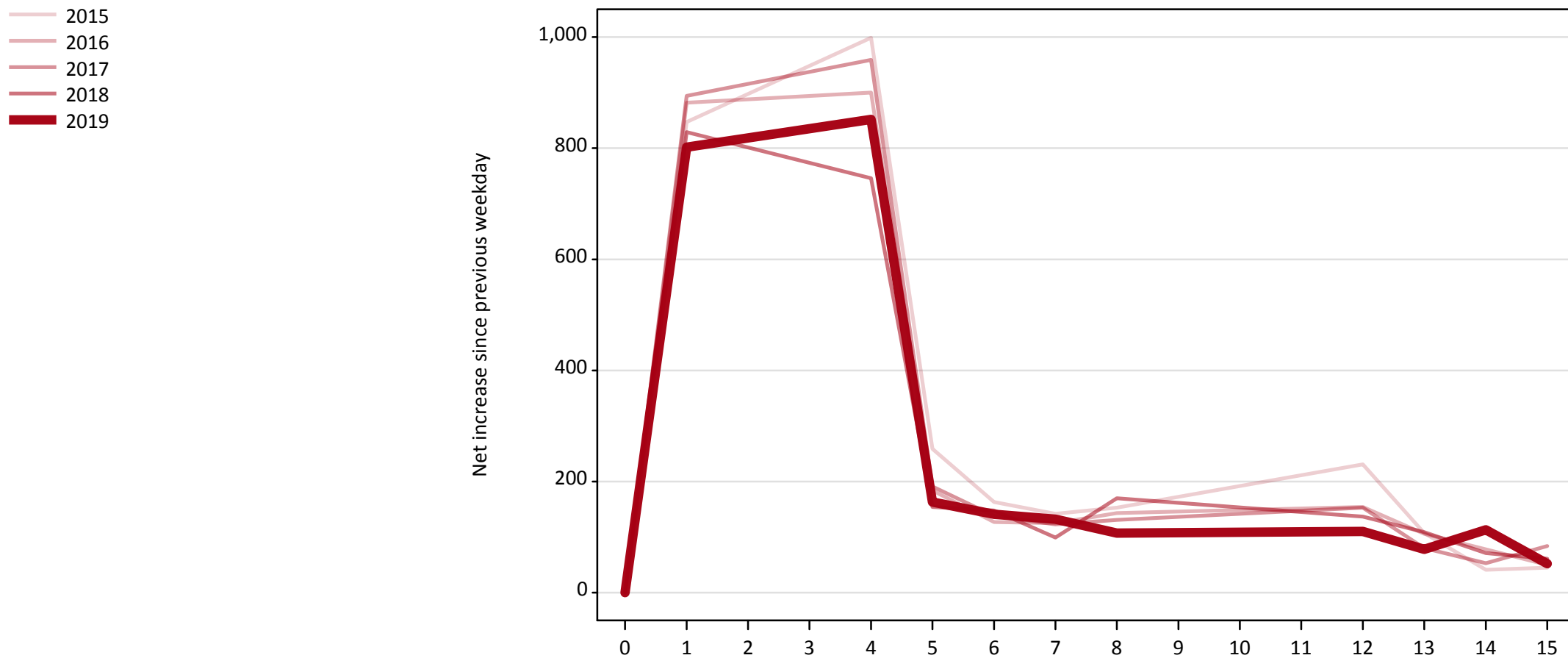
Direct to Clearing: difference between cycle and 2018 cycle

Applicant type	Status	2010	2011	2012	2013	2014	2015	2016	2017	2018	2019
Direct to Clearing	Placed (Direct to Clearing)	-59%	-60%	-25%	-26%	-31%	-25%	-26%	-7%	0%	16%
	Other (Direct to Clearing)	-15%	-19%	-26%	-19%	-11%	2%	-6%	14%	0%	-1%

Note: The percentage change is not recorded in the above table for groups with fewer than 10 placed applicants in that cycle or in the 2018 cycle.

A.18 All Placed: Daily net change (from Wales)

Net increase since previous weekday (2019 cycle up to 15 days after A level results day)

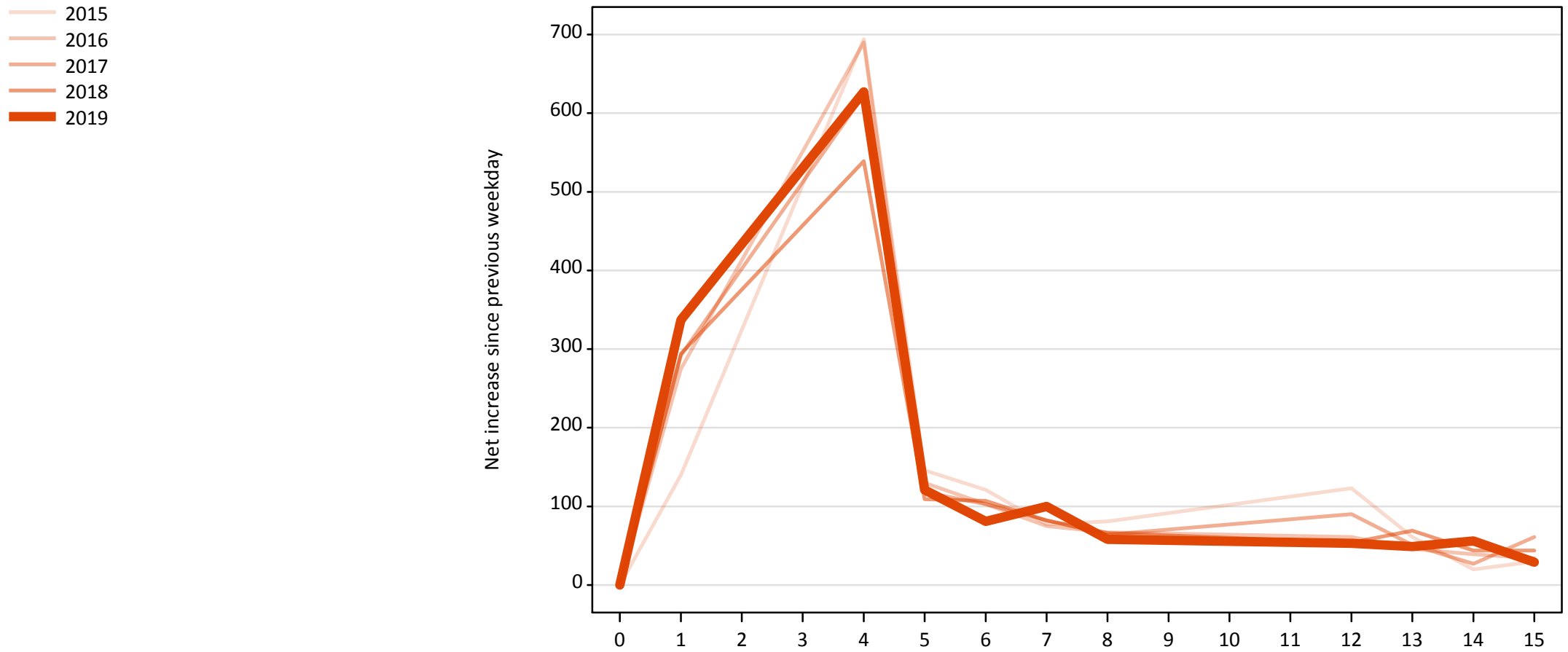


A.19 All Placed: Daily net change (from Wales)

Net increase since previous weekday (2019 cycle up to 15 days after A level results day)

Applicant status, days since A level results day		2015	2016	2017	2018	2019
All Placed	0	0	0	0	0	0
	1	850	880	890	830	800
	4	1,000	900	960	750	850
	5	260	180	190	150	160
	6	160	130	140	150	140
	7	140	130	120	100	130
	8	150	140	130	170	110
	12	230	150	150	140	110
	13	110	110	80	110	80
	14	40	80	50	70	110
	15	50	50	80	60	50

A.20 Placed through Clearing only: Daily net change (from Wales)
Net increase since previous weekday (2019 cycle up to 15 days after A level results day)



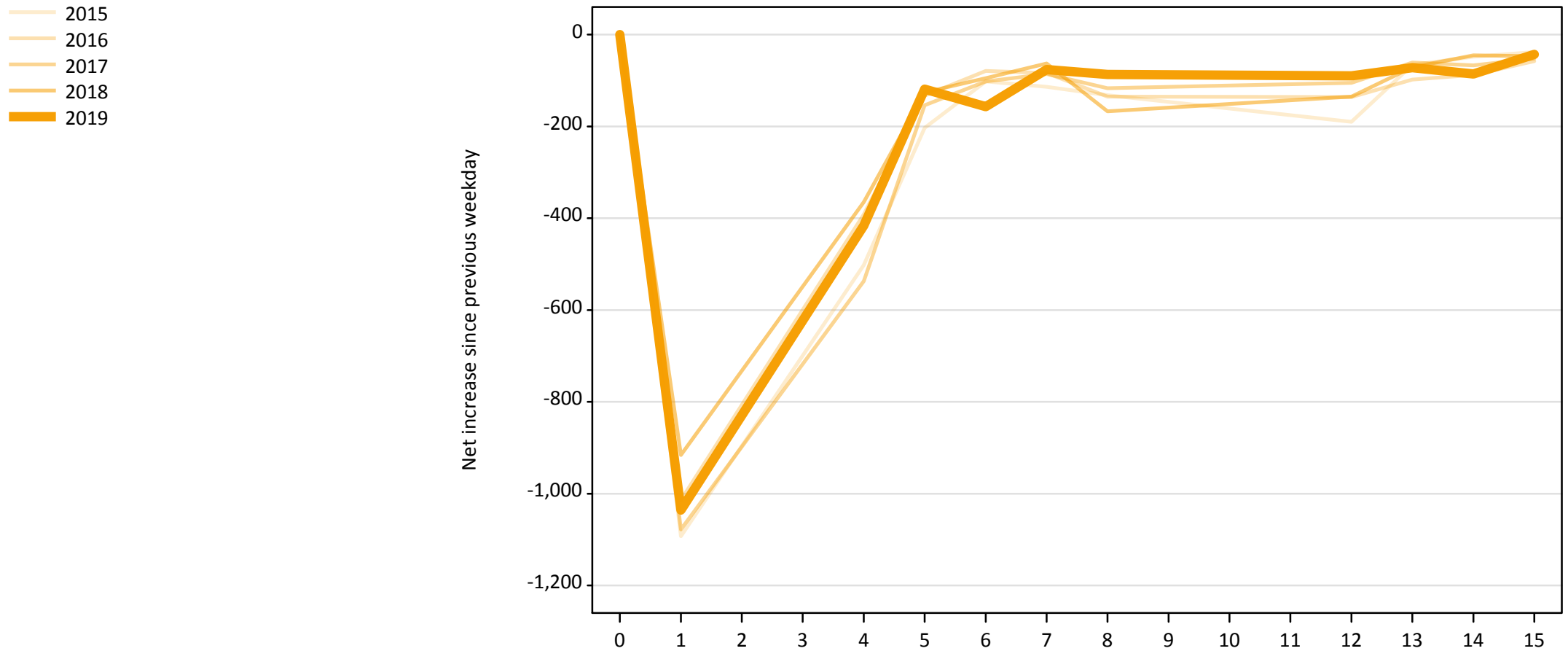
A.21 Placed through Clearing only: Daily net change (from Wales)

Net increase since previous weekday (2019 cycle up to 15 days after A level results day)

Applicant status, days since A level results day		2015	2016	2017	2018	2019
Placed through Clearing only	0	0	0	0	0	0
	1	140	280	290	290	340
	4	690	690	620	540	630
	5	150	130	120	110	120
	6	120	100	100	110	80
	7	80	80	80	80	100
	8	80	70	60	70	60
	12	120	60	90	50	50
	13	60	50	50	70	50
	14	20	40	30	40	60
	15	30	30	60	40	30

A.22 Holding Offer: Daily net change (from Wales)

Net increase since previous weekday (2019 cycle up to 15 days after A level results day)



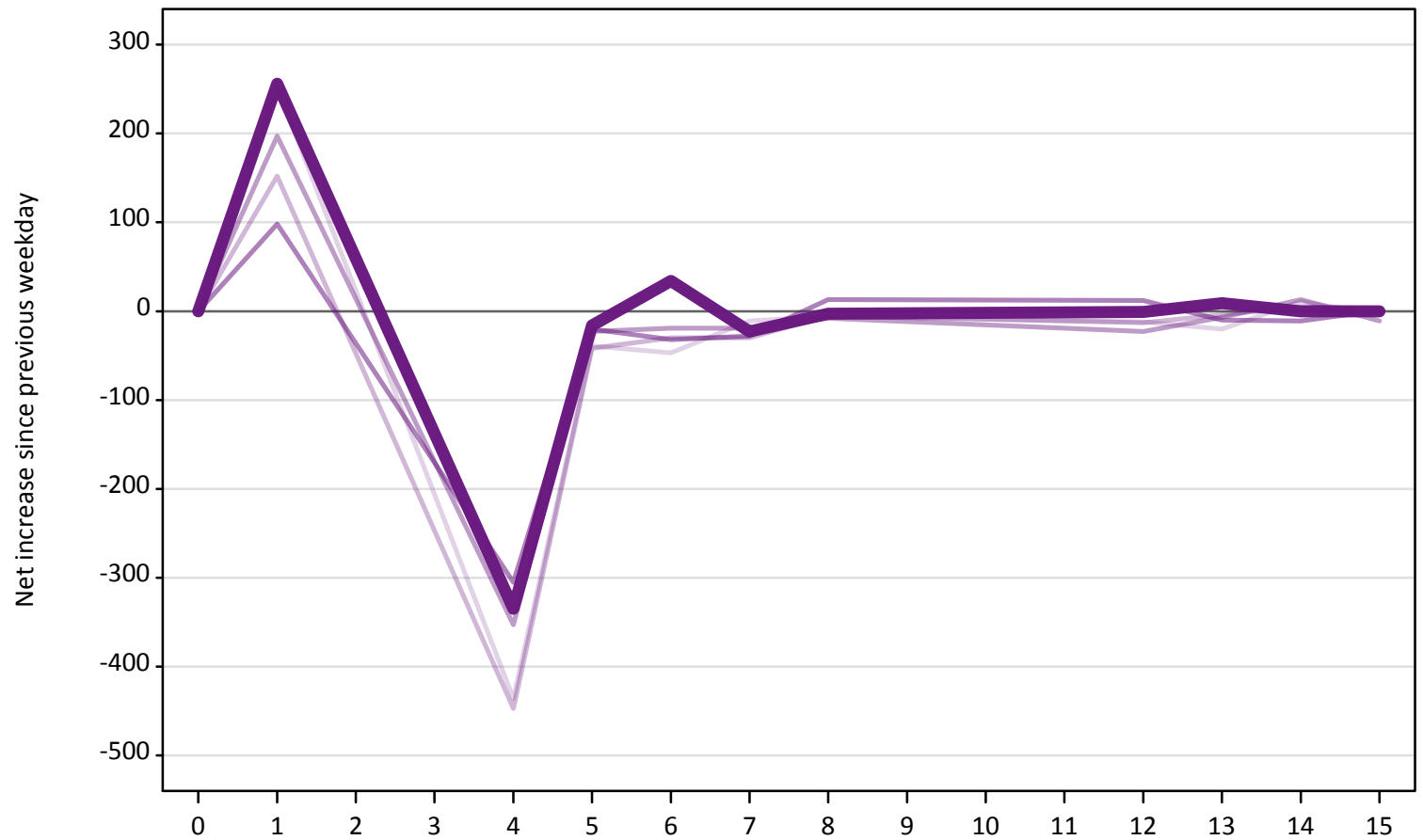
A.23 Holding Offer: Daily net change (from Wales)

Net increase since previous weekday (2019 cycle up to 15 days after A level results day)

Applicant status, days since A level results day	2015	2016	2017	2018	2019	
Holding Offer	0	0	0	0	0	
	1	-1,090	-1,010	-1,080	-920	-1,040
	4	-500	-390	-540	-370	-420
	5	-200	-130	-150	-130	-120
	6	-100	-80	-100	-100	-160
	7	-110	-80	-90	-60	-80
	8	-130	-140	-120	-170	-90
	12	-190	-140	-110	-140	-90
	13	-70	-100	-60	-70	-70
	14	-50	-90	-70	-50	-90
	15	-40	-60	-50	-50	-40

A.24 Free to be placed in Clearing: Daily net change (from Wales)
Net increase since previous weekday (2019 cycle up to 15 days after A level results day)

- 2015
- 2016
- 2017
- 2018
- 2019



A.25 Free to be placed in Clearing: Daily net change (from Wales)

Net increase since previous weekday (2019 cycle up to 15 days after A level results day)

Applicant status, days since A level results day		2015	2016	2017	2018	2019
Free to be placed in Clearing	0	0	0	0	0	0
	1	250	150	200	100	260
	4	-440	-450	-350	-310	-340
	5	-40	-40	-20	-20	-20
	6	-50	-30	-20	-30	30
	7	-10	-30	-20	-30	-20
	8	-10	-10	-10	10	0
	12	-10	-10	-20	10	0
	13	-20	0	-10	-10	10
	14	10	10	10	-10	0
	15	0	0	-10	0	0