

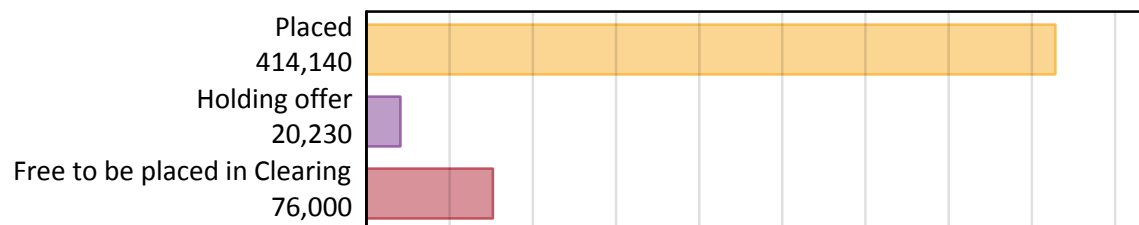
Daily Clearing Analysis: Overview

Analysis at 00:05 on Friday 30 August 2019 (15 days after A level results day)

A.1 Applicants by type and status from the UK, 2019 cycle

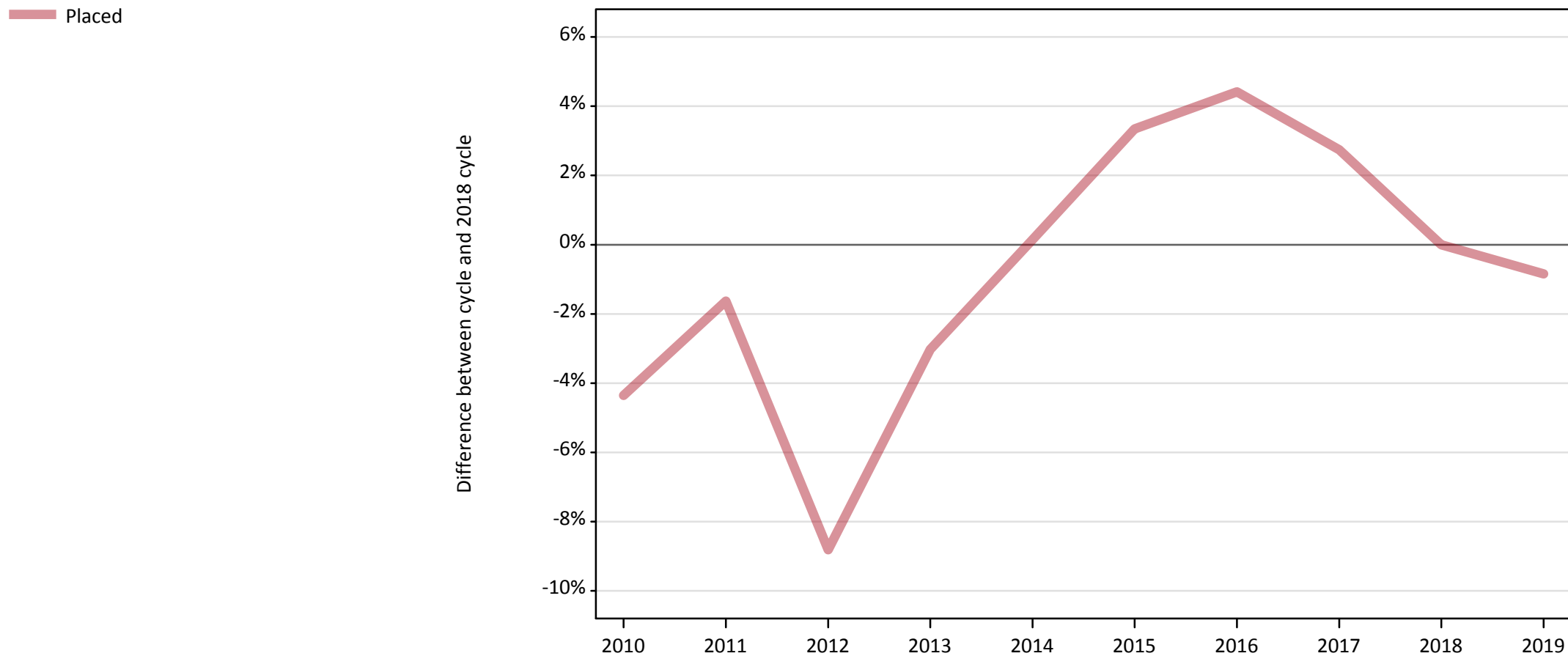
| Applicant type | Status | 2019 |
|--------------------|-------------------------------|---------|
| Main scheme | Placed (Clearing) | 41,280 |
| | Placed (Adjustment) | 530 |
| | Placed (Firm) | 323,230 |
| | Placed (Insurance) | 27,720 |
| | Placed (Other) | 10,540 |
| | Holding offer | 20,230 |
| | Free to be placed in Clearing | 76,000 |
| Direct to Clearing | Placed (Direct to Clearing) | 10,840 |
| | Other (Direct to Clearing) | 7,140 |
| All applicants | Placed | 414,140 |

A.2 Summary of applicants who are placed, holding offers or free to be placed in Clearing (the UK)



A.3 All placed applicants from the UK: 15 days after A level results day

All placed applicants: difference between cycle and 2018 cycle



Note: The percentage change is not plotted in the above chart for groups with fewer than 30 placed applicants in any one cycle.

A.4 All placed applicants from the UK: 15 days after A level results day

All placed applicants: applicants at 15 days after A level results day

| Applicant type | Status | 2010 | 2011 | 2012 | 2013 | 2014 | 2015 | 2016 | 2017 | 2018 | 2019 |
|----------------|--------|---------|---------|---------|---------|---------|---------|---------|---------|---------|---------|
| All applicants | Placed | 399,480 | 410,860 | 380,870 | 405,050 | 418,280 | 431,640 | 436,130 | 429,140 | 417,680 | 414,140 |

A.5 All placed applicants from the UK: 15 days after A level results day

All placed applicants: difference between cycle and 2018 cycle

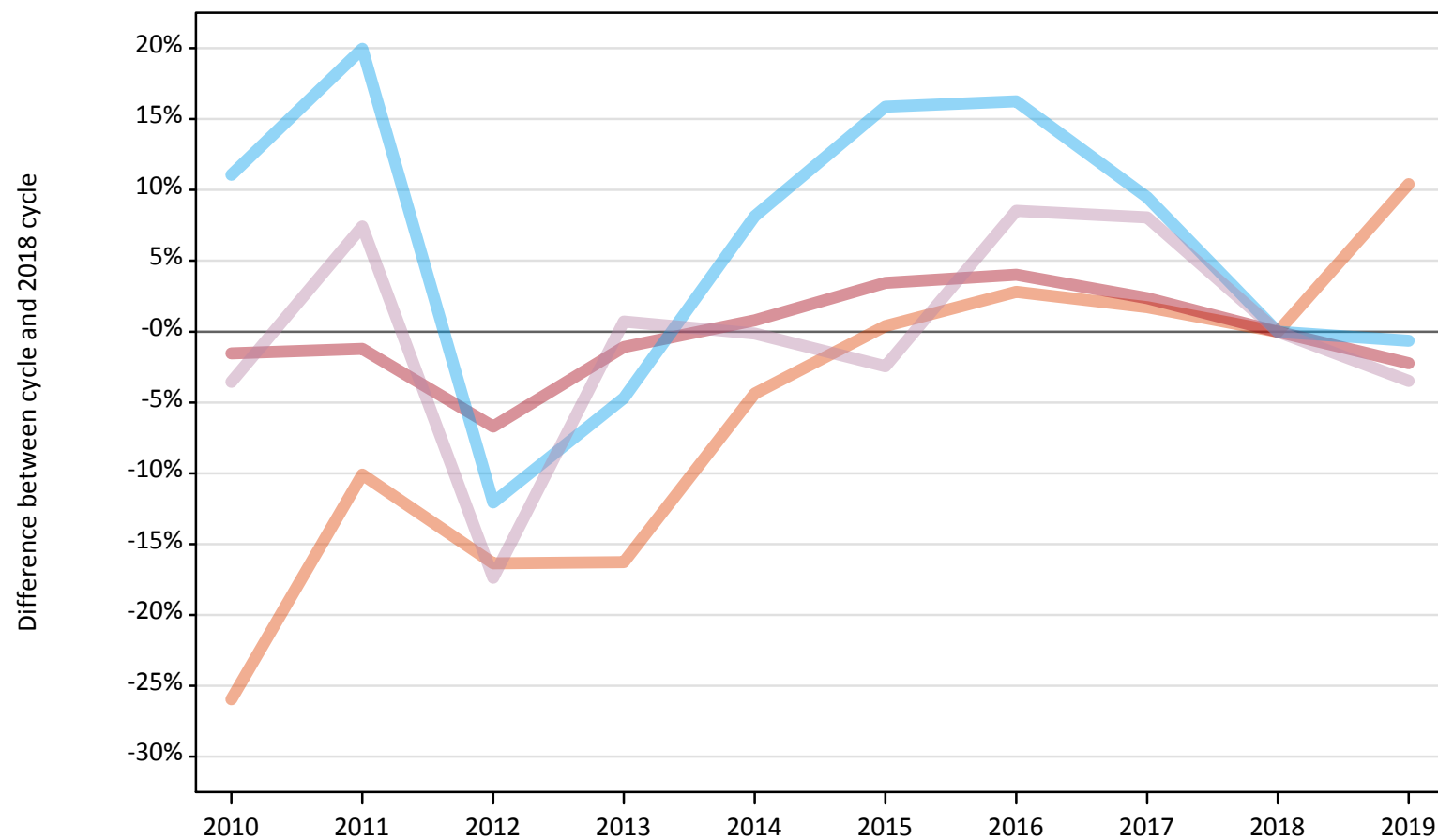
| Applicant type | Status | 2010 | 2011 | 2012 | 2013 | 2014 | 2015 | 2016 | 2017 | 2018 | 2019 |
|----------------|--------|------|------|------|------|------|------|------|------|------|------|
| All applicants | Placed | -4% | -2% | -9% | -3% | 0% | 3% | 4% | 3% | 0% | -1% |

Note: The percentage change is not recorded in the above table for groups with fewer than 10 placed applicants in that cycle or in the 2018 cycle.

A.6 Placed main scheme applicants from the UK: 15 days after A level results day

All Main scheme placed routes (excluding Adjustment): difference between cycle and 2018 cycle

- Placed (Clearing)
- Placed (Firm)
- Placed (Insurance)
- Placed (Other)



Note: The percentage change is not plotted in the above chart for groups with fewer than 30 placed applicants in any one cycle.

A.7 Placed main scheme applicants from the UK: 15 days after A level results day

All Main scheme placed routes (excluding Adjustment): applicants at 15 days after A level results day

| Applicant type | Status | 2010 | 2011 | 2012 | 2013 | 2014 | 2015 | 2016 | 2017 | 2018 | 2019 |
|----------------|--------------------|---------|---------|---------|---------|---------|---------|---------|---------|---------|---------|
| Main scheme | Placed (Clearing) | 27,690 | 33,610 | 31,270 | 31,300 | 35,750 | 37,530 | 38,440 | 38,030 | 37,390 | 41,280 |
| | Placed (Firm) | 325,530 | 326,580 | 308,440 | 327,000 | 333,210 | 341,970 | 343,890 | 338,370 | 330,600 | 323,230 |
| | Placed (Insurance) | 30,990 | 33,480 | 24,540 | 26,600 | 30,180 | 32,330 | 32,440 | 30,550 | 27,900 | 27,720 |
| | Placed (Other) | 10,530 | 11,730 | 9,020 | 11,000 | 10,900 | 10,650 | 11,850 | 11,800 | 10,920 | 10,540 |

A.8 Placed main scheme applicants from the UK: 15 days after A level results day

All Main scheme placed routes (excluding Adjustment): difference between cycle and 2018 cycle

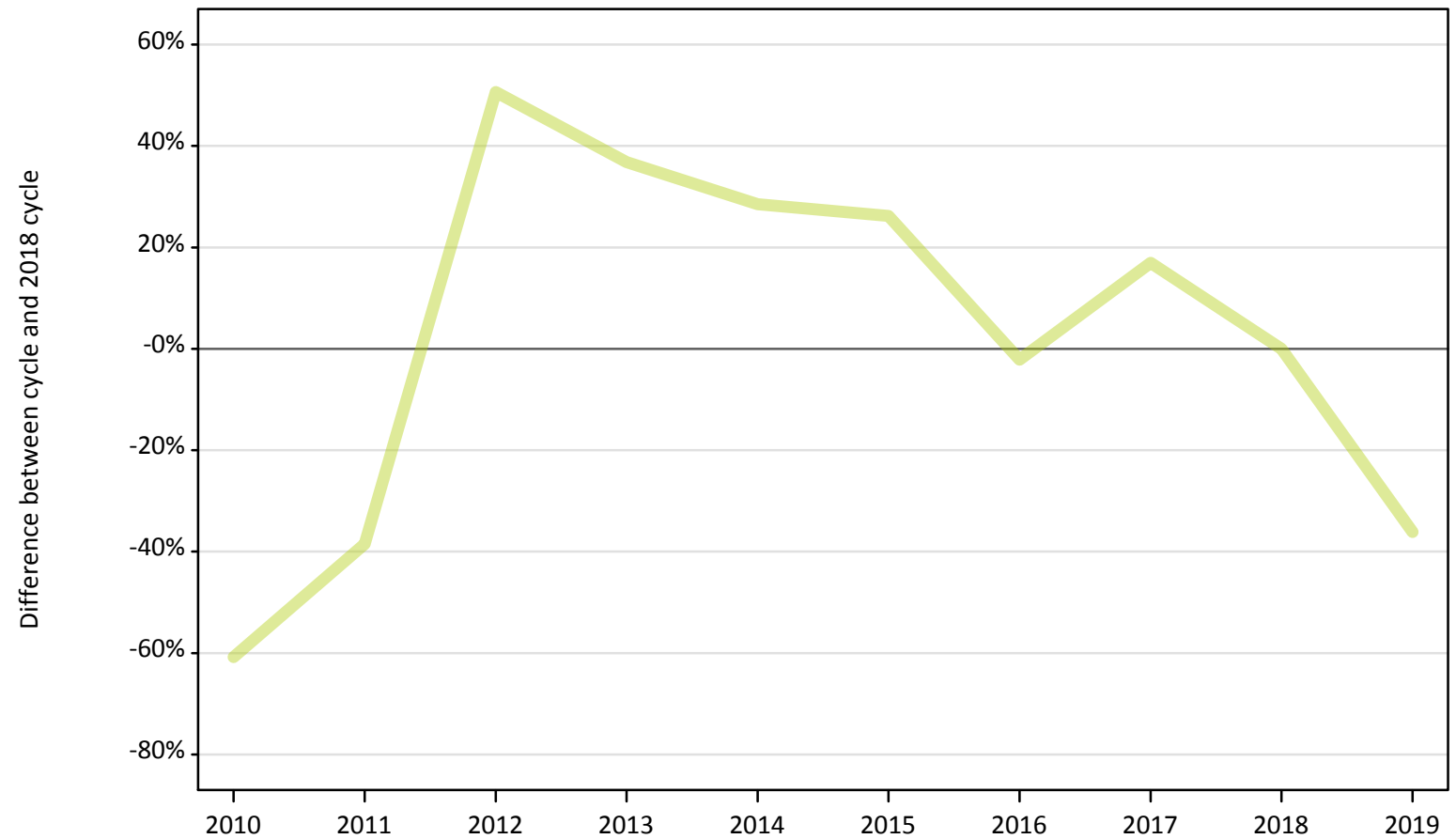
| Applicant type | Status | 2010 | 2011 | 2012 | 2013 | 2014 | 2015 | 2016 | 2017 | 2018 | 2019 |
|----------------|--------------------|------|------|------|------|------|------|------|------|------|------|
| Main scheme | Placed (Clearing) | -26% | -10% | -16% | -16% | -4% | 0% | 3% | 2% | 0% | 10% |
| | Placed (Firm) | -2% | -1% | -7% | -1% | 1% | 3% | 4% | 2% | 0% | -2% |
| | Placed (Insurance) | 11% | 20% | -12% | -5% | 8% | 16% | 16% | 9% | 0% | -1% |
| | Placed (Other) | -4% | 7% | -17% | 1% | -0% | -2% | 9% | 8% | 0% | -3% |

Note: The percentage change is not recorded in the above table for groups with fewer than 10 placed applicants in that cycle or in the 2018 cycle.

A.9 Main scheme applicants placed through adjustment: 15 days after A level results day

Placed through adjustment: difference between cycle and 2018 cycle

Placed (Adjustment)



Note: The percentage change is not plotted in the above chart for groups with fewer than 30 placed applicants in any one cycle.

A.10 Main scheme applicants placed through adjustment: 15 days after A level results day

Placed through adjustment: applicants at 15 days after A level results day

| Applicant type | Status | 2010 | 2011 | 2012 | 2013 | 2014 | 2015 | 2016 | 2017 | 2018 | 2019 |
|----------------|---------------------|------|------|-------|-------|-------|-------|------|------|------|------|
| Main scheme | Placed (Adjustment) | 330 | 510 | 1,250 | 1,140 | 1,070 | 1,050 | 810 | 970 | 830 | 530 |

A.11 Main scheme applicants placed through adjustment: 15 days after A level results day

Placed through adjustment: difference between cycle and 2018 cycle

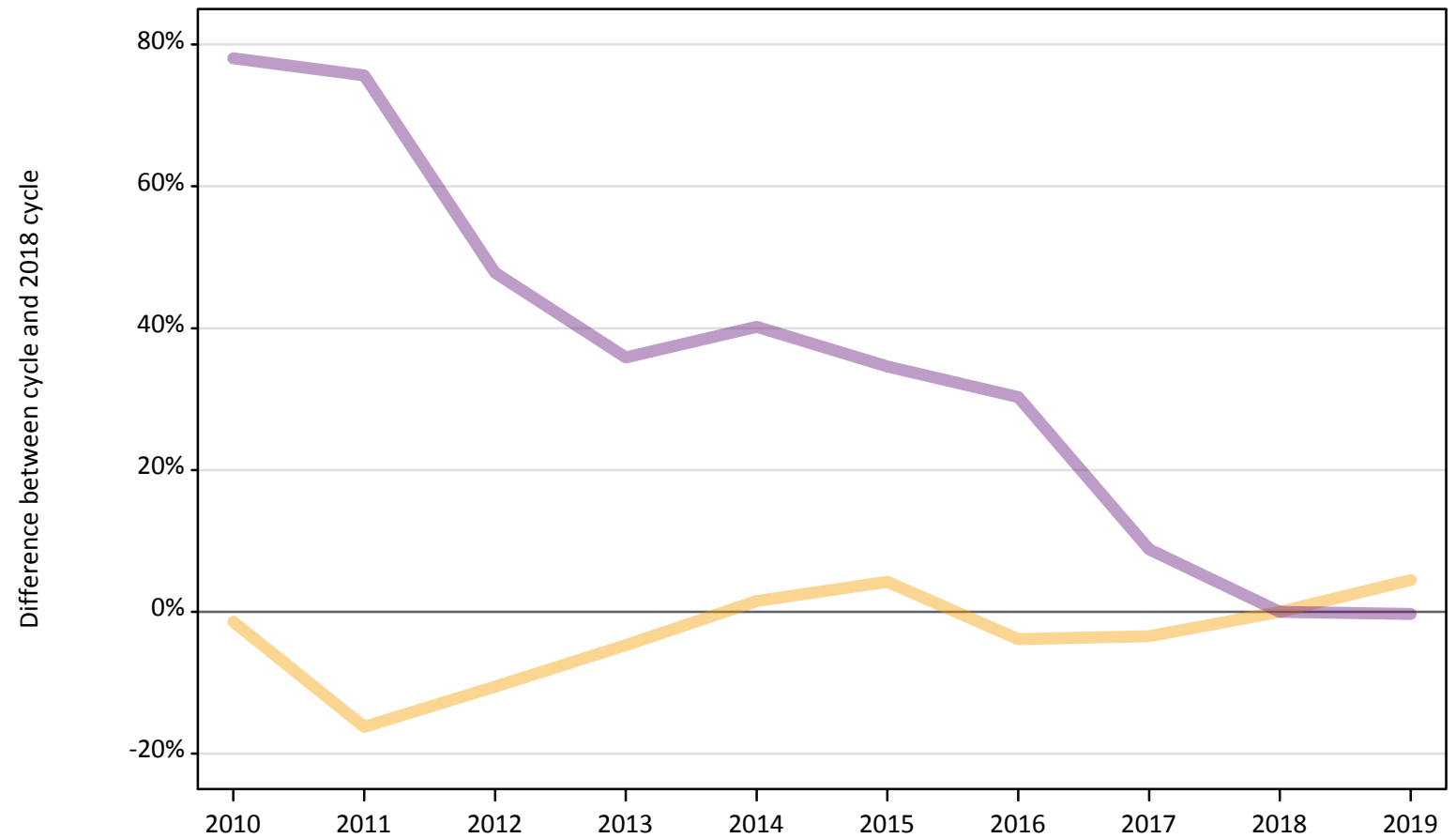
| Applicant type | Status | 2010 | 2011 | 2012 | 2013 | 2014 | 2015 | 2016 | 2017 | 2018 | 2019 |
|----------------|---------------------|------|------|------|------|------|------|------|------|------|------|
| Main scheme | Placed (Adjustment) | -61% | -39% | 51% | 37% | 29% | 26% | -2% | 17% | 0% | -36% |

Note: The percentage change is not recorded in the above table for groups with fewer than 10 placed applicants in that cycle or in the 2018 cycle.

A.12 Main scheme applicants not currently placed from the UK: 15 days after A level results day

Applicants in unplaced states: difference between cycle and 2018 cycle

— Holding offer
— Free to be placed in Clearing



Note: The percentage change is not plotted in the above chart for groups with fewer than 30 unplaced applicants in any one cycle.

A.13 Main scheme applicants not currently placed from the UK: 15 days after A level results day

Applicants in unplaced states: applicants at 15 days after A level results day

| Applicant type | Status | 2010 | 2011 | 2012 | 2013 | 2014 | 2015 | 2016 | 2017 | 2018 | 2019 |
|----------------|-------------------------------|---------|---------|---------|---------|---------|---------|--------|--------|--------|--------|
| Main scheme | Holding offer | 19,080 | 16,220 | 17,310 | 18,450 | 19,650 | 20,180 | 18,610 | 18,690 | 19,360 | 20,230 |
| | Free to be placed in Clearing | 135,720 | 133,880 | 112,680 | 103,560 | 106,860 | 102,600 | 99,290 | 82,930 | 76,220 | 76,000 |

A.14 Main scheme applicants not currently placed from the UK: 15 days after A level results day

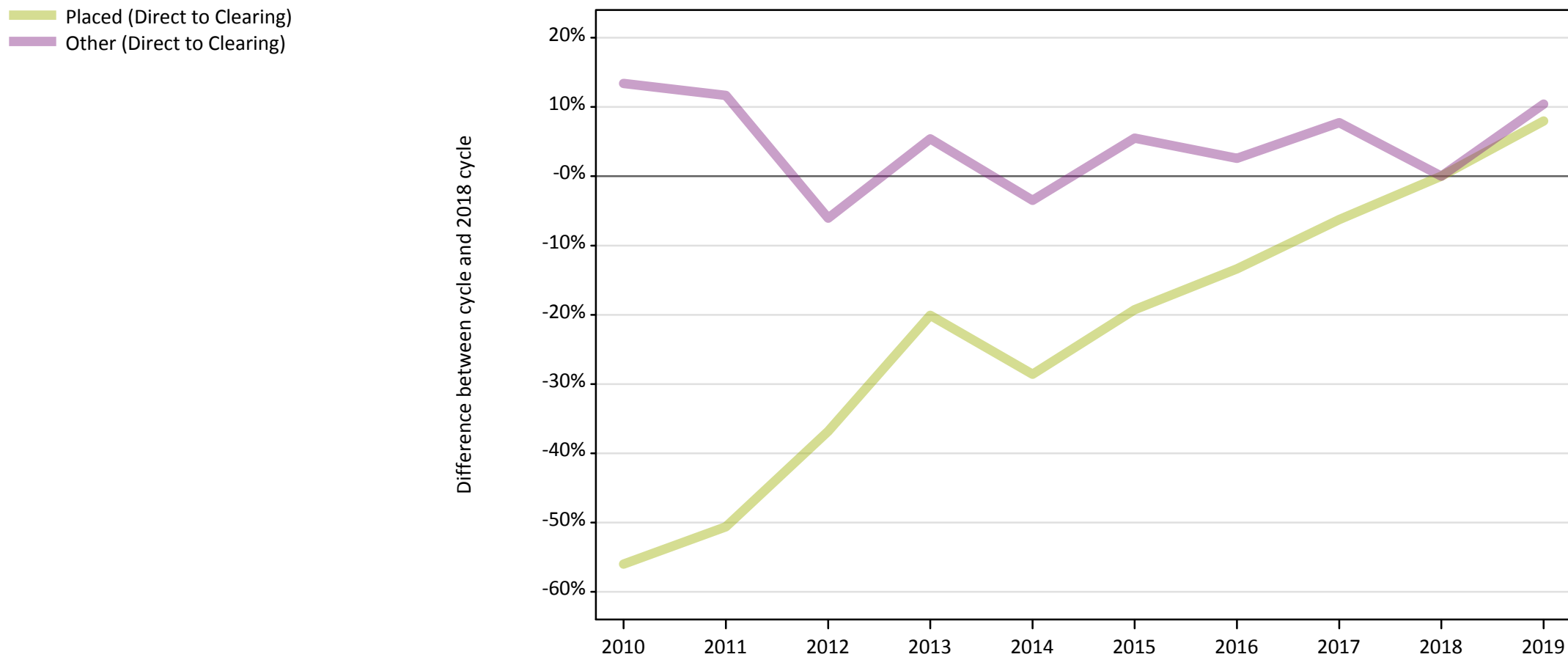
Applicants in unplaced states: difference between cycle and 2018 cycle

| Applicant type | Status | 2010 | 2011 | 2012 | 2013 | 2014 | 2015 | 2016 | 2017 | 2018 | 2019 |
|----------------|-------------------------------|------|------|------|------|------|------|------|------|------|------|
| Main scheme | Holding offer | -1% | -16% | -11% | -5% | 2% | 4% | -4% | -3% | 0% | 4% |
| | Free to be placed in Clearing | 78% | 76% | 48% | 36% | 40% | 35% | 30% | 9% | 0% | -0% |

Note: The percentage change is not recorded in the above table for groups with fewer than 10 unplaced applicants in that cycle or in the 2018 cycle.

A.15 Direct to Clearing applicants from the UK: 15 days after A level results day

Direct to Clearing: difference between cycle and 2018 cycle



Note: The percentage change is not plotted in the above chart for groups with fewer than 30 placed applicants in any one cycle.

A.16 Direct to Clearing applicants from the UK: 15 days after A level results day

Direct to Clearing 15 days after A level results day

| Applicant type | Status | 2010 | 2011 | 2012 | 2013 | 2014 | 2015 | 2016 | 2017 | 2018 | 2019 |
|--------------------|-----------------------------|-------|-------|-------|-------|-------|-------|-------|-------|--------|--------|
| Direct to Clearing | Placed (Direct to Clearing) | 4,420 | 4,960 | 6,340 | 8,020 | 7,170 | 8,110 | 8,700 | 9,410 | 10,040 | 10,840 |
| | Other (Direct to Clearing) | 7,330 | 7,220 | 6,070 | 6,810 | 6,240 | 6,820 | 6,630 | 6,960 | 6,460 | 7,140 |

A.17 Direct to Clearing applicants from the UK: 15 days after A level results day

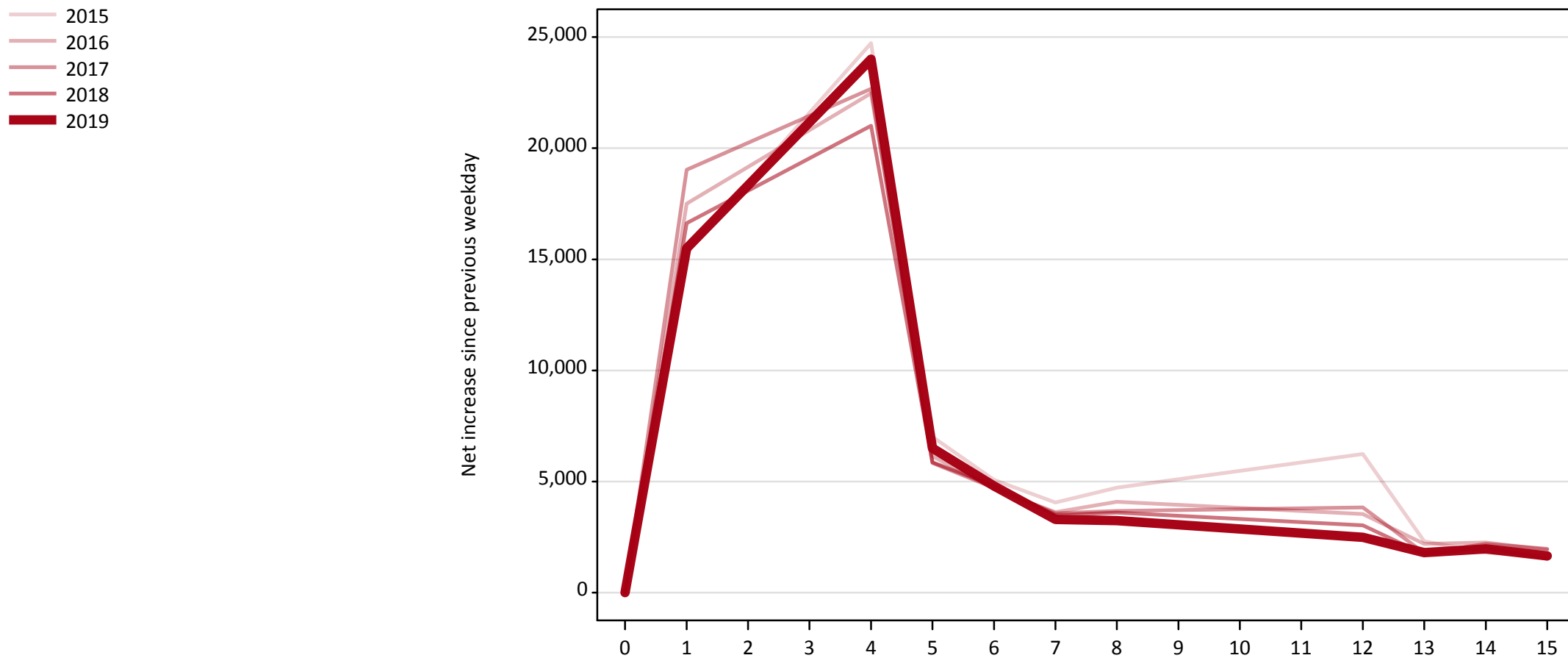
Direct to Clearing: difference between cycle and 2018 cycle

| Applicant type | Status | 2010 | 2011 | 2012 | 2013 | 2014 | 2015 | 2016 | 2017 | 2018 | 2019 |
|--------------------|-----------------------------|------|------|------|------|------|------|------|------|------|------|
| Direct to Clearing | Placed (Direct to Clearing) | -56% | -51% | -37% | -20% | -29% | -19% | -13% | -6% | 0% | 8% |
| | Other (Direct to Clearing) | 13% | 12% | -6% | 5% | -3% | 6% | 3% | 8% | 0% | 10% |

Note: The percentage change is not recorded in the above table for groups with fewer than 10 placed applicants in that cycle or in the 2018 cycle.

A.18 All Placed: Daily net change (from the UK)

Net increase since previous weekday (2019 cycle up to 15 days after A level results day)

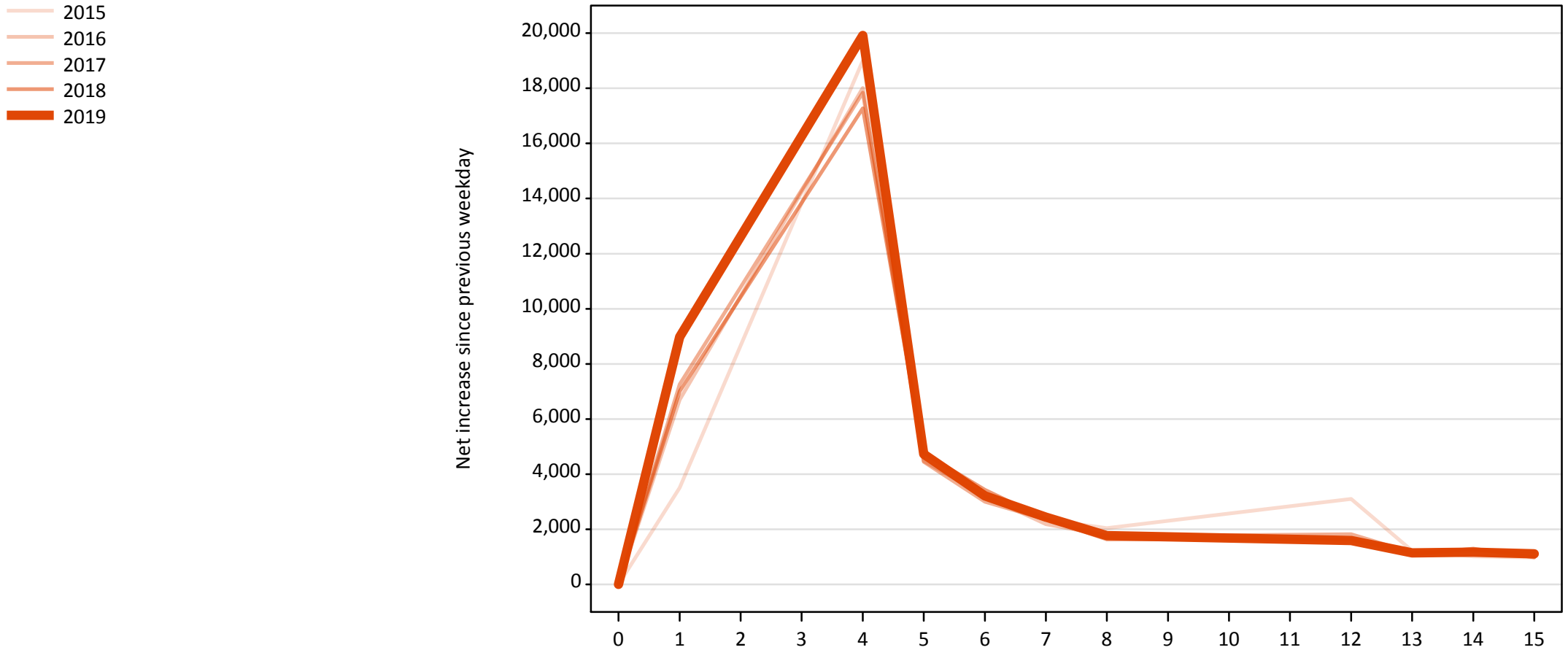


A.19 All Placed: Daily net change (from the UK)

Net increase since previous weekday (2019 cycle up to 15 days after A level results day)

| Applicant status, days since A level results day | 2015 | 2016 | 2017 | 2018 | 2019 | |
|--|------|--------|--------|--------|--------|--------|
| All Placed | 0 | 0 | 0 | 0 | 0 | |
| | 1 | 15,350 | 17,510 | 19,030 | 16,620 | 15,490 |
| | 4 | 24,730 | 22,470 | 22,670 | 21,010 | 24,010 |
| | 5 | 7,020 | 6,140 | 5,840 | 5,870 | 6,510 |
| | 6 | 5,070 | 4,660 | 4,710 | 4,810 | 4,800 |
| | 7 | 4,060 | 3,630 | 3,570 | 3,500 | 3,300 |
| | 8 | 4,720 | 4,090 | 3,670 | 3,600 | 3,240 |
| | 12 | 6,240 | 3,530 | 3,840 | 3,020 | 2,490 |
| | 13 | 2,310 | 2,200 | 1,780 | 1,720 | 1,800 |
| | 14 | 1,810 | 2,260 | 2,200 | 2,030 | 1,970 |
| | 15 | 1,680 | 1,920 | 1,970 | 1,530 | 1,650 |

A.20 Placed through Clearing only: Daily net change (from the UK)
Net increase since previous weekday (2019 cycle up to 15 days after A level results day)

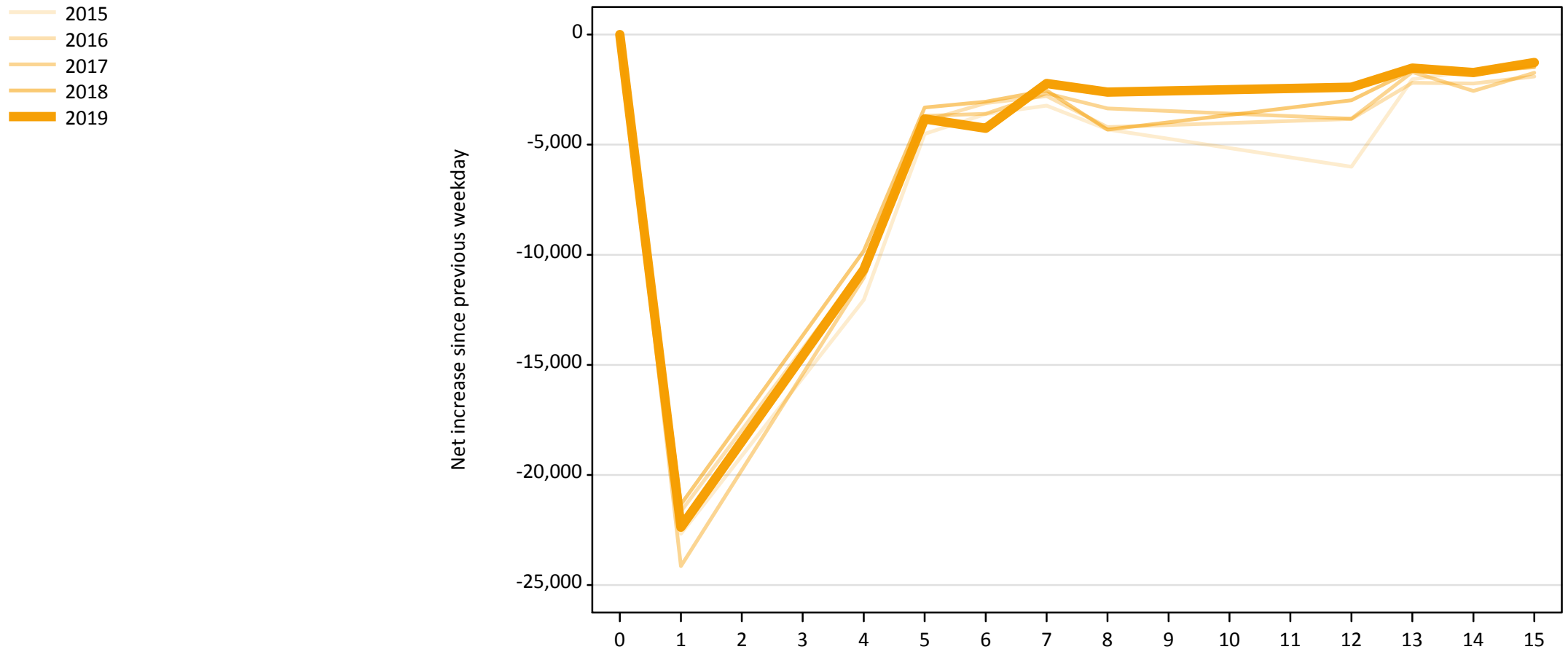


A.21 Placed through Clearing only: Daily net change (from the UK)

Net increase since previous weekday (2019 cycle up to 15 days after A level results day)

| Applicant status, days since A level results day | | 2015 | 2016 | 2017 | 2018 | 2019 |
|--|----|--------|--------|--------|--------|--------|
| Placed through Clearing only | 0 | 0 | 0 | 0 | 0 | 0 |
| | 1 | 3,510 | 6,700 | 7,260 | 7,010 | 8,980 |
| | 4 | 19,000 | 18,010 | 17,840 | 17,270 | 19,910 |
| | 5 | 4,820 | 4,470 | 4,450 | 4,770 | 4,730 |
| | 6 | 3,170 | 3,220 | 3,000 | 3,430 | 3,210 |
| | 7 | 2,350 | 2,180 | 2,360 | 2,370 | 2,440 |
| | 8 | 2,040 | 1,780 | 1,740 | 1,640 | 1,770 |
| | 12 | 3,100 | 1,570 | 1,820 | 1,640 | 1,600 |
| | 13 | 1,220 | 1,210 | 1,150 | 1,080 | 1,140 |
| | 14 | 1,020 | 1,270 | 1,220 | 1,300 | 1,170 |
| | 15 | 980 | 1,090 | 1,200 | 980 | 1,110 |

A.22 Holding Offer: Daily net change (from the UK)
Net increase since previous weekday (2019 cycle up to 15 days after A level results day)



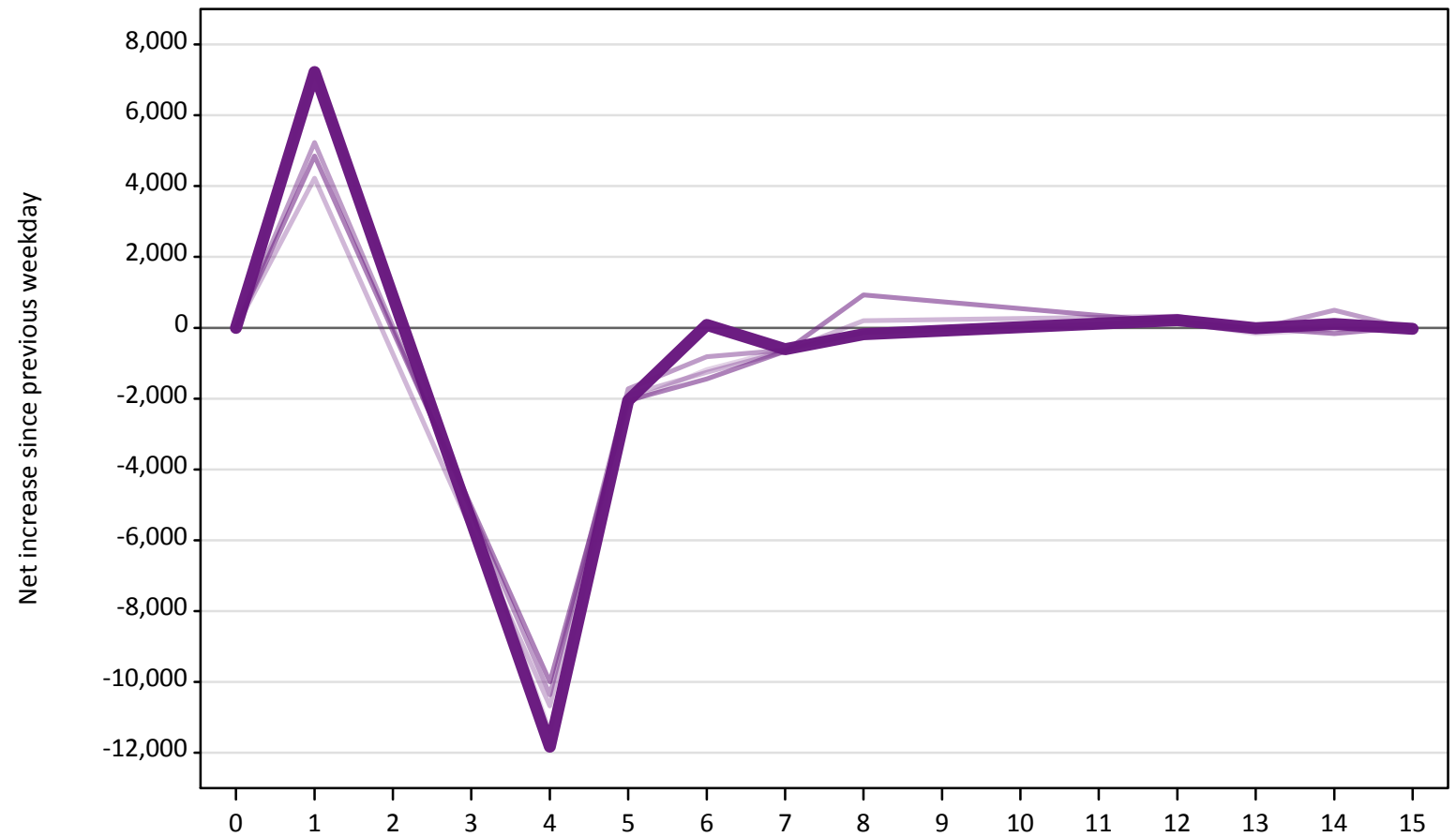
A.23 Holding Offer: Daily net change (from the UK)

Net increase since previous weekday (2019 cycle up to 15 days after A level results day)

| Applicant status, days since A level results day | | 2015 | 2016 | 2017 | 2018 | 2019 |
|--|----|---------|---------|---------|---------|---------|
| Holding Offer | 0 | 0 | 0 | 0 | 0 | 0 |
| | 1 | -22,670 | -21,650 | -24,140 | -21,330 | -22,370 |
| | 4 | -12,050 | -10,570 | -11,040 | -9,830 | -10,670 |
| | 5 | -4,510 | -3,920 | -3,690 | -3,320 | -3,840 |
| | 6 | -3,610 | -3,110 | -3,600 | -3,040 | -4,250 |
| | 7 | -3,230 | -2,790 | -2,670 | -2,540 | -2,220 |
| | 8 | -4,310 | -4,200 | -3,360 | -4,320 | -2,620 |
| | 12 | -6,000 | -3,830 | -3,830 | -2,980 | -2,390 |
| | 13 | -2,030 | -2,190 | -1,700 | -1,620 | -1,520 |
| | 14 | -1,640 | -2,220 | -2,560 | -1,700 | -1,720 |
| | 15 | -1,470 | -1,900 | -1,740 | -1,480 | -1,270 |

A.24 Free to be placed in Clearing: Daily net change (from the UK)
Net increase since previous weekday (2019 cycle up to 15 days after A level results day)

- 2015
- 2016
- 2017
- 2018
- 2019



A.25 Free to be placed in Clearing: Daily net change (from the UK)

Net increase since previous weekday (2019 cycle up to 15 days after A level results day)

| Applicant status, days since A level results day | | 2015 | 2016 | 2017 | 2018 | 2019 |
|--|----|---------|---------|---------|---------|---------|
| Free to be placed in Clearing | 0 | 0 | 0 | 0 | 0 | 0 |
| | 1 | 7,260 | 4,220 | 5,230 | 4,850 | 7,220 |
| | 4 | -11,400 | -10,680 | -10,370 | -10,000 | -11,830 |
| | 5 | -2,100 | -1,900 | -1,730 | -2,050 | -2,060 |
| | 6 | -1,180 | -1,260 | -820 | -1,450 | 80 |
| | 7 | -610 | -660 | -630 | -660 | -610 |
| | 8 | -150 | 200 | -130 | 920 | -180 |
| | 12 | 150 | 320 | 190 | 160 | 220 |
| | 13 | -170 | -50 | -40 | 0 | -10 |
| | 14 | -50 | 40 | 500 | -160 | 100 |
| | 15 | -40 | 60 | -50 | 30 | -30 |