

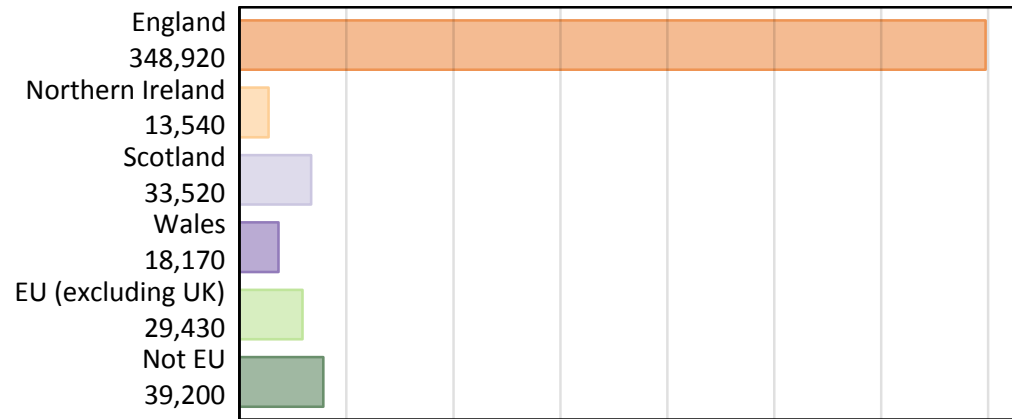
Daily Clearing Analysis: Country

Analysis at 00:05 on Friday 30 August 2019 (15 days after A level results day)

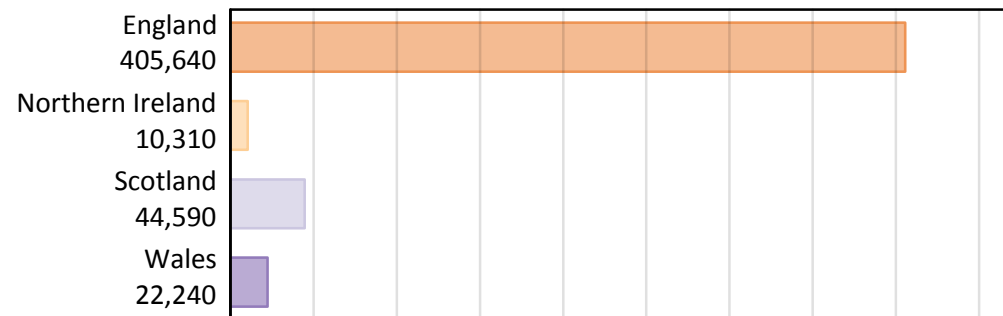
B.1 Placed applicants by country of provider and domicile, 2019 cycle

Domicile of applicant	Country of provider				
	England	Northern Ireland	Scotland	Wales	UK
England	334,550	300	4,330	9,730	348,920
Northern Ireland	3,220	9,330	870	130	13,540
Scotland	1,500	20	31,960	40	33,520
Wales	7,810	10	130	10,220	18,170
EU (excluding UK)	24,180	410	3,890	950	29,430
Not EU	34,380	240	3,410	1,170	39,200
All	405,640	10,310	44,590	22,240	482,770

B.2 Placed applicants by domicile group



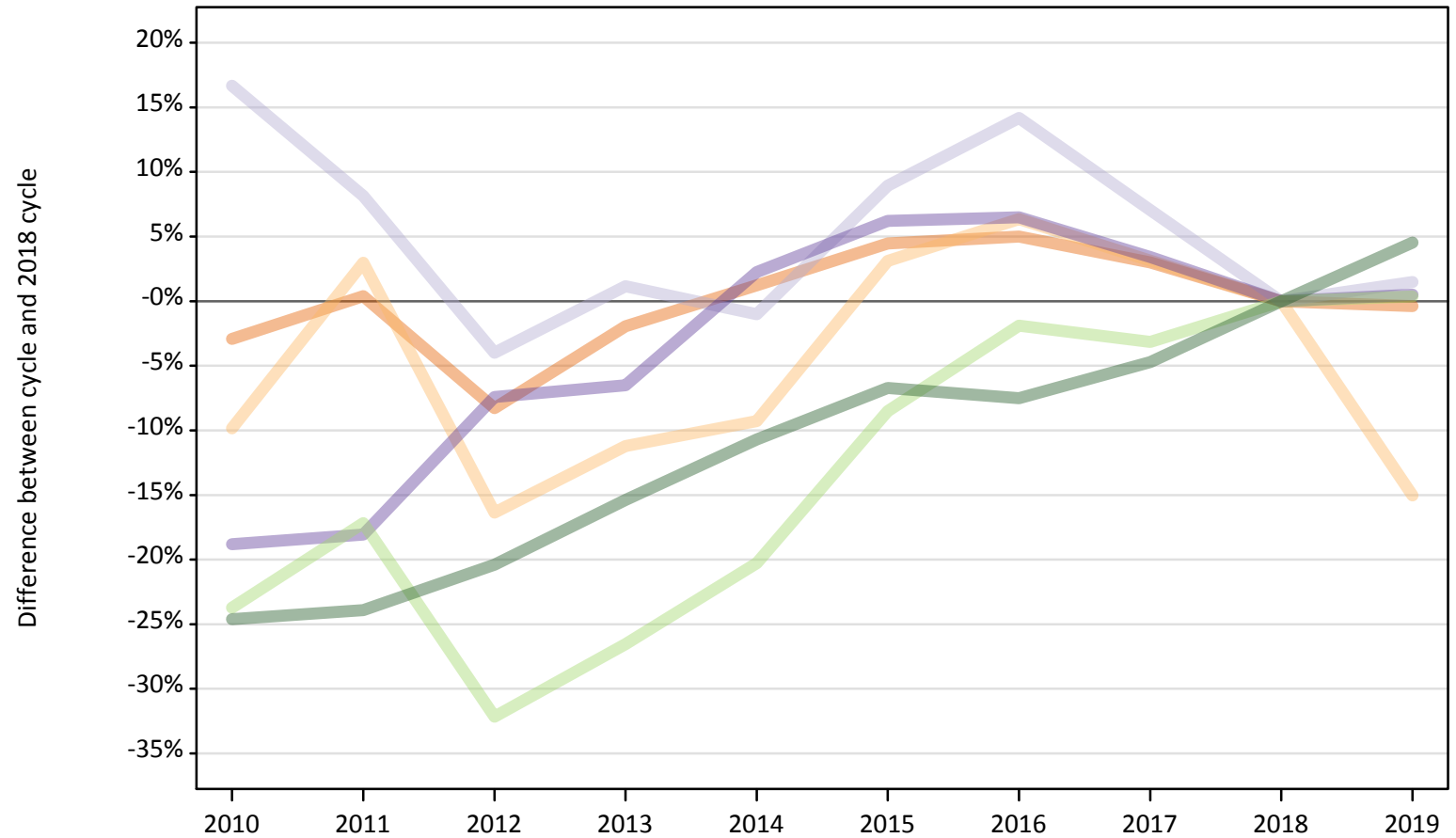
B.3 Placed applicants by country of provider



B.4 Placed applicants at 15 days after A level results day: providers in England

Selected applicant domiciles: difference between cycle and 2018 cycle (at 15 days after A level results day)

- England
- Northern Ireland
- Scotland
- Wales
- EU (excluding UK)
- Not EU



Note: The percentage change is not plotted in the above chart for groups with fewer than 30 placed applicants in any one cycle.

B.5 Placed applicants at 15 days after A level results day: providers in England

Placed applicants by domicile (at 15 days after A level results day)

Domicile of applicant	2010	2011	2012	2013	2014	2015	2016	2017	2018	2019
England	326,050	337,180	308,070	329,350	339,980	350,810	352,630	345,930	335,840	334,550
Northern Ireland	3,420	3,900	3,170	3,370	3,440	3,910	4,030	3,910	3,790	3,220
Scotland	1,720	1,600	1,420	1,490	1,460	1,610	1,680	1,580	1,480	1,500
Wales	6,310	6,370	7,190	7,260	7,950	8,250	8,270	8,040	7,770	7,810
EU (excluding UK)	18,380	19,960	16,350	17,700	19,210	22,050	23,640	23,340	24,100	24,180
Not EU	24,790	25,020	26,180	27,820	29,360	30,670	30,410	31,330	32,880	34,380

B.6 Placed applicants at 15 days after A level results day: providers in England

Selected applicant domiciles: difference between cycle and 2018 cycle (at 15 days after A level results day)

Domicile of applicant	2010	2011	2012	2013	2014	2015	2016	2017	2018	2019
England	-3%	0%	-8%	-2%	1%	4%	5%	3%	0%	-0%
Northern Ireland	-10%	3%	-16%	-11%	-9%	3%	6%	3%	0%	-15%
Scotland	17%	8%	-4%	1%	-1%	9%	14%	7%	0%	1%
Wales	-19%	-18%	-7%	-7%	2%	6%	6%	3%	0%	1%
EU (excluding UK)	-24%	-17%	-32%	-27%	-20%	-9%	-2%	-3%	0%	0%
Not EU	-25%	-24%	-20%	-15%	-11%	-7%	-8%	-5%	0%	5%

Note: The percentage change is not recorded in the above table for groups with fewer than 10 placed applicants in that cycle or in the 2018 cycle.

B.7 Placed applicants at 15 days after A level results day: providers in Northern Ireland
Selected applicant domiciles: difference between cycle and 2018 cycle (at 15 days after A level results day)

- England
- Northern Ireland
- Scotland
- Wales
- EU (excluding UK)
- Not EU



Note: The percentage change is not plotted in the above chart for groups with fewer than 30 placed applicants in any one cycle.

B.8 Placed applicants at 15 days after A level results day: providers in Northern Ireland

Placed applicants by domicile (at 15 days after A level results day)

Domicile of applicant	2010	2011	2012	2013	2014	2015	2016	2017	2018	2019
England	220	240	260	260	440	570	320	340	320	300
Northern Ireland	8,830	8,440	8,750	9,710	9,680	8,750	9,350	9,060	8,980	9,330
Scotland	20	20	30	20	20	20	20	30	30	20
Wales	10	10	0	10	10	10	10	20	10	10
EU (excluding UK)	600	430	420	440	470	400	350	370	390	410
Not EU	70	110	170	180	200	170	230	220	270	240

B.9 Placed applicants at 15 days after A level results day: providers in Northern Ireland

Selected applicant domiciles: difference between cycle and 2018 cycle (at 15 days after A level results day)

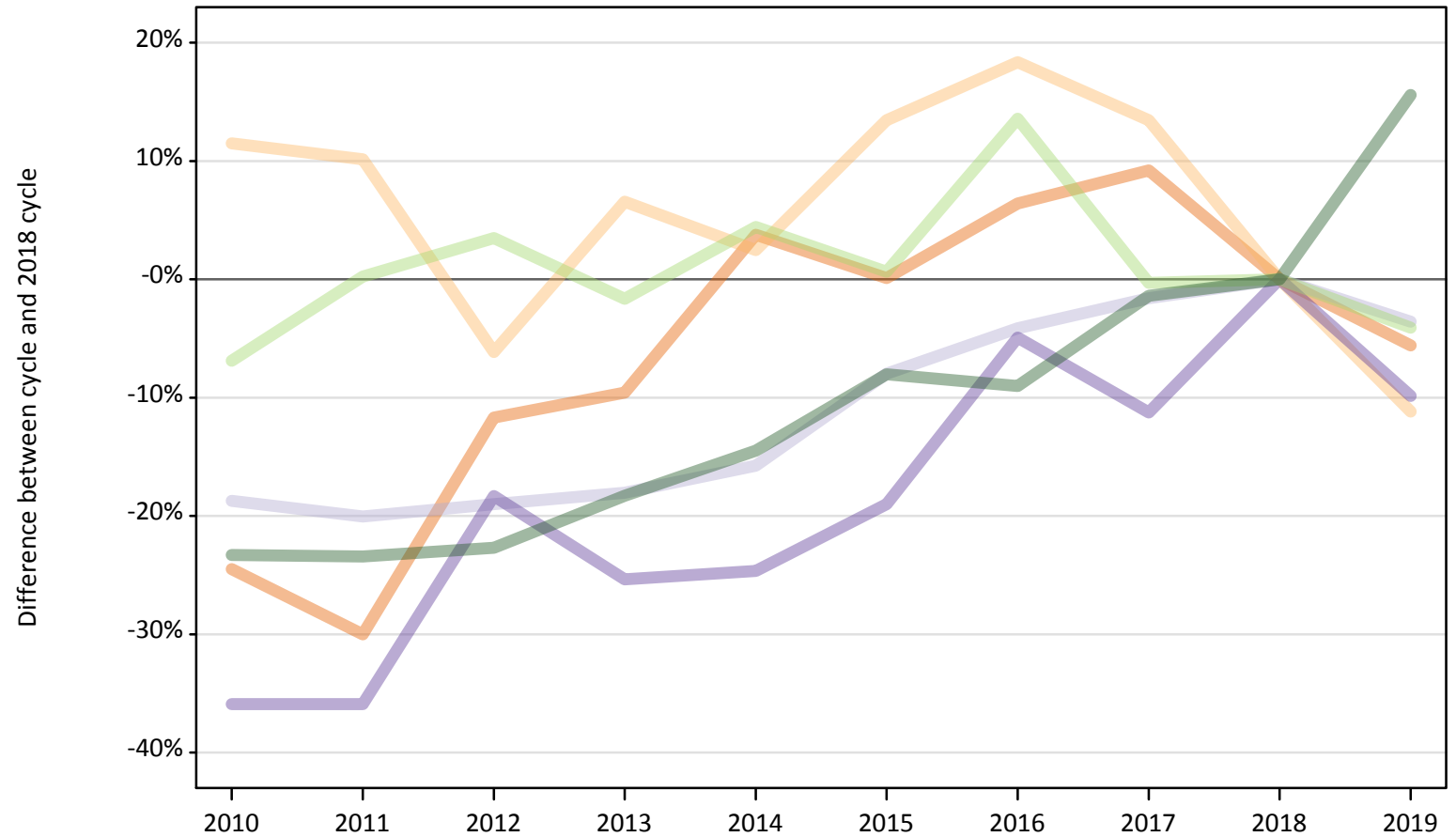
Domicile of applicant	2010	2011	2012	2013	2014	2015	2016	2017	2018	2019
England	-31%	-24%	-19%	-17%	39%	78%	-0%	6%	0%	-6%
Northern Ireland	-2%	-6%	-3%	8%	8%	-3%	4%	1%	0%	4%
Scotland	-15%	-30%	-4%	-44%	-37%	-26%	-30%	19%	0%	-30%
Wales						30%	10%	50%	0%	20%
EU (excluding UK)	54%	10%	8%	12%	19%	4%	-10%	-5%	0%	5%
Not EU	-75%	-57%	-37%	-32%	-24%	-38%	-14%	-19%	0%	-10%

Note: The percentage change is not recorded in the above table for groups with fewer than 10 placed applicants in that cycle or in the 2018 cycle.

B.10 Placed applicants at 15 days after A level results day: providers in Scotland

Selected applicant domiciles: difference between cycle and 2018 cycle (at 15 days after A level results day)

- England
- Northern Ireland
- Scotland
- Wales
- EU (excluding UK)
- Not EU



Note: The percentage change is not plotted in the above chart for groups with fewer than 30 placed applicants in any one cycle.

B.11 Placed applicants at 15 days after A level results day: providers in Scotland

Placed applicants by domicile (at 15 days after A level results day)

Domicile of applicant	2010	2011	2012	2013	2014	2015	2016	2017	2018	2019
England	3,470	3,210	4,050	4,150	4,760	4,600	4,880	5,010	4,590	4,330
Northern Ireland	1,090	1,070	920	1,040	1,000	1,110	1,150	1,110	980	870
Scotland	26,940	26,500	26,850	27,170	27,930	30,510	31,780	32,620	33,150	31,960
Wales	90	90	120	110	110	120	140	130	140	130
EU (excluding UK)	3,770	4,060	4,190	3,990	4,230	4,080	4,600	4,040	4,050	3,890
Not EU	2,270	2,260	2,280	2,410	2,530	2,720	2,690	2,910	2,950	3,410

B.12 Placed applicants at 15 days after A level results day: providers in Scotland

Selected applicant domiciles: difference between cycle and 2018 cycle (at 15 days after A level results day)

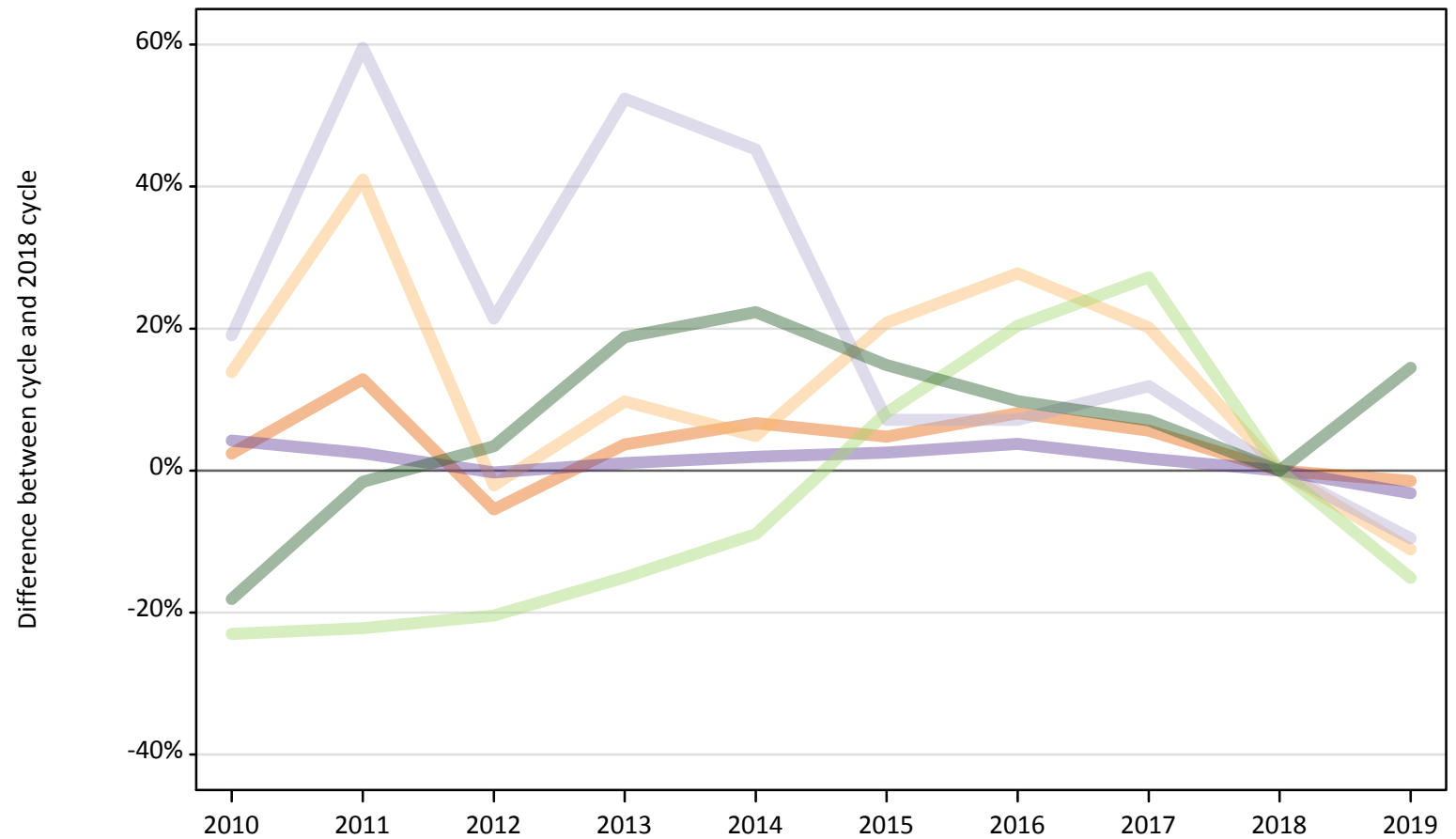
Domicile of applicant	2010	2011	2012	2013	2014	2015	2016	2017	2018	2019
England	-24%	-30%	-12%	-10%	4%	0%	6%	9%	0%	-6%
Northern Ireland	11%	10%	-6%	7%	2%	13%	18%	13%	0%	-11%
Scotland	-19%	-20%	-19%	-18%	-16%	-8%	-4%	-2%	0%	-4%
Wales	-36%	-36%	-18%	-25%	-25%	-19%	-5%	-11%	0%	-10%
EU (excluding UK)	-7%	0%	3%	-2%	4%	1%	14%	-0%	0%	-4%
Not EU	-23%	-23%	-23%	-18%	-14%	-8%	-9%	-1%	0%	16%

Note: The percentage change is not recorded in the above table for groups with fewer than 10 placed applicants in that cycle or in the 2018 cycle.

B.13 Placed applicants at 15 days after A level results day: providers in Wales

Selected applicant domiciles: difference between cycle and 2018 cycle (at 15 days after A level results day)

- England
- Northern Ireland
- Scotland
- Wales
- EU (excluding UK)
- Not EU



Note: The percentage change is not plotted in the above chart for groups with fewer than 30 placed applicants in any one cycle.

B.14 Placed applicants at 15 days after A level results day: providers in Wales

Placed applicants by domicile (at 15 days after A level results day)

Domicile of applicant	2010	2011	2012	2013	2014	2015	2016	2017	2018	2019
England	10,110	11,150	9,330	10,240	10,540	10,350	10,680	10,430	9,880	9,730
Northern Ireland	160	200	140	160	150	170	180	170	140	130
Scotland	50	70	50	60	60	50	50	50	40	40
Wales	11,000	10,820	10,530	10,670	10,760	10,830	10,950	10,730	10,560	10,220
EU (excluding UK)	860	870	890	950	1,020	1,210	1,350	1,420	1,120	950
Not EU	840	1,010	1,060	1,210	1,250	1,170	1,120	1,090	1,020	1,170

B.15 Placed applicants at 15 days after A level results day: providers in Wales

Selected applicant domiciles: difference between cycle and 2018 cycle (at 15 days after A level results day)

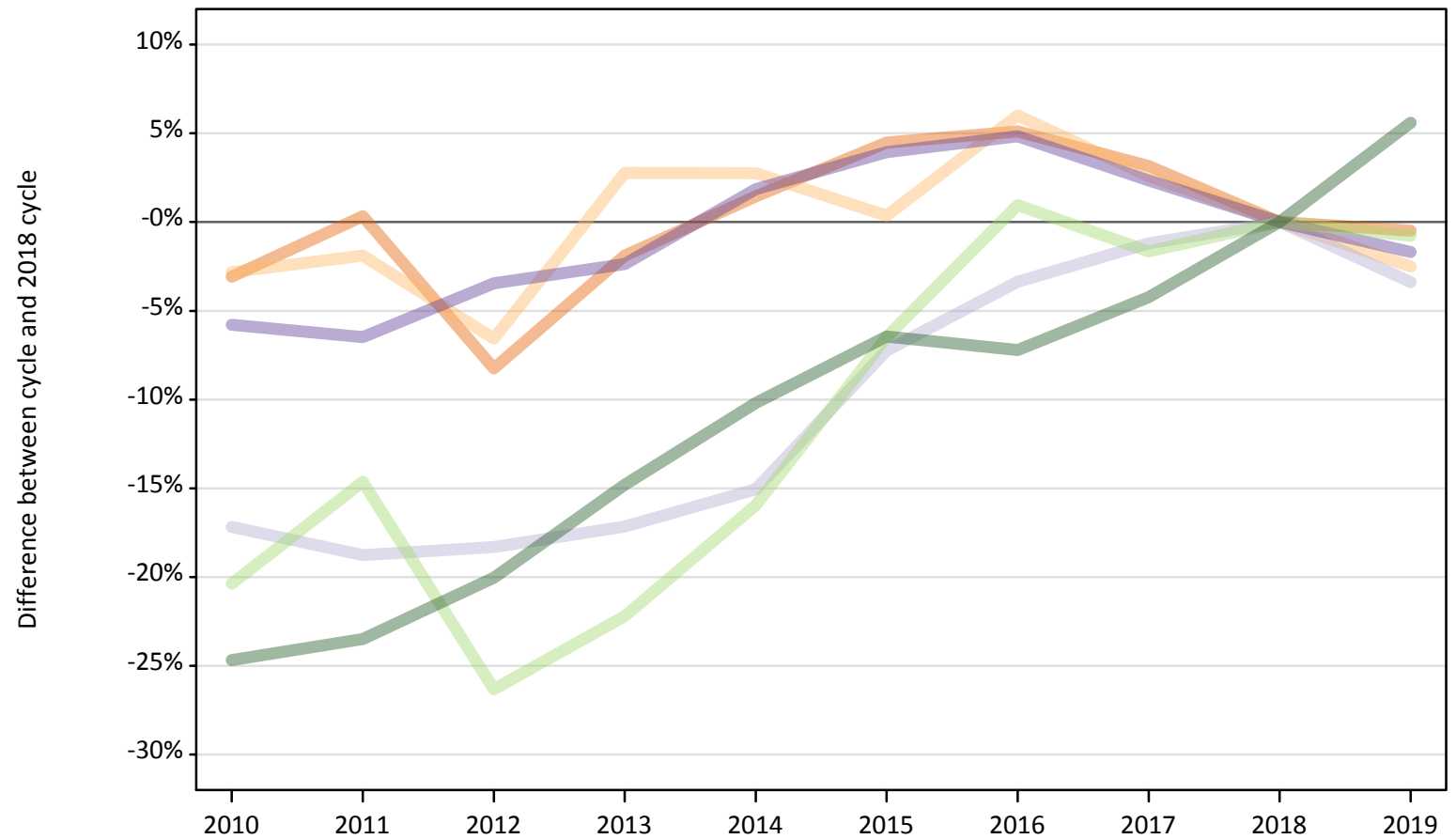
Domicile of applicant	2010	2011	2012	2013	2014	2015	2016	2017	2018	2019
England	2%	13%	-5%	4%	7%	5%	8%	6%	0%	-1%
Northern Ireland	14%	41%	-2%	10%	5%	21%	28%	20%	0%	-11%
Scotland	19%	60%	21%	52%	45%	7%	7%	12%	0%	-10%
Wales	4%	2%	-0%	1%	2%	3%	4%	2%	0%	-3%
EU (excluding UK)	-23%	-22%	-20%	-15%	-9%	8%	20%	27%	0%	-15%
Not EU	-18%	-2%	3%	19%	22%	15%	10%	7%	0%	14%

Note: The percentage change is not recorded in the above table for groups with fewer than 10 placed applicants in that cycle or in the 2018 cycle.

B.16 Placed applicants at 15 days after A level results day: providers in the UK

Selected applicant domiciles: difference between cycle and 2018 cycle (at 15 days after A level results day)

- England
- Northern Ireland
- Scotland
- Wales
- EU (excluding UK)
- Not EU



Note: The percentage change is not plotted in the above chart for groups with fewer than 30 placed applicants in any one cycle.

B.17 Placed applicants at 15 days after A level results day: providers in the UK

Placed applicants by domicile (at 15 days after A level results day)

Domicile of applicant	2010	2011	2012	2013	2014	2015	2016	2017	2018	2019
England	339,840	351,780	321,710	344,000	355,720	366,320	368,510	361,710	350,620	348,920
Northern Ireland	13,500	13,630	12,980	14,270	14,270	13,940	14,720	14,250	13,890	13,540
Scotland	28,730	28,180	28,340	28,740	29,470	32,180	33,520	34,270	34,690	33,520
Wales	17,410	17,280	17,840	18,040	18,820	19,210	19,370	18,910	18,480	18,170
EU (excluding UK)	23,610	25,320	21,850	23,070	24,930	27,740	29,940	29,170	29,660	29,430
Not EU	27,960	28,400	29,690	31,630	33,340	34,730	34,450	35,560	37,120	39,200

B.18 Placed applicants at 15 days after A level results day: providers in the UK

Selected applicant domiciles: difference between cycle and 2018 cycle (at 15 days after A level results day)

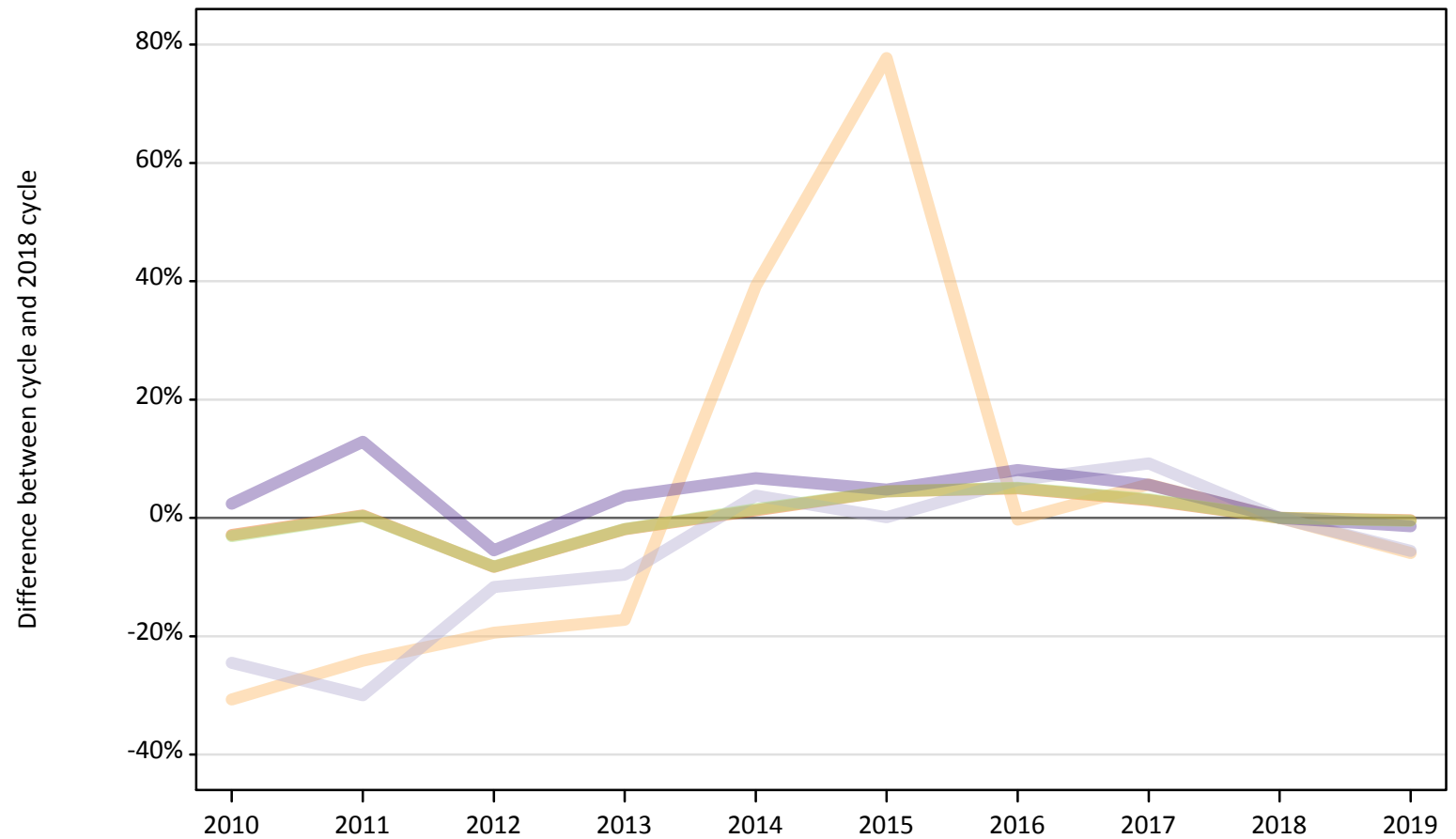
Domicile of applicant	2010	2011	2012	2013	2014	2015	2016	2017	2018	2019
England	-3%	0%	-8%	-2%	1%	4%	5%	3%	0%	-0%
Northern Ireland	-3%	-2%	-7%	3%	3%	0%	6%	3%	0%	-2%
Scotland	-17%	-19%	-18%	-17%	-15%	-7%	-3%	-1%	0%	-3%
Wales	-6%	-6%	-3%	-2%	2%	4%	5%	2%	0%	-2%
EU (excluding UK)	-20%	-15%	-26%	-22%	-16%	-6%	1%	-2%	0%	-1%
Not EU	-25%	-24%	-20%	-15%	-10%	-6%	-7%	-4%	0%	6%

Note: The percentage change is not recorded in the above table for groups with fewer than 10 placed applicants in that cycle or in the 2018 cycle.

B.19 Placed applicants at 15 days after A level results day: domiciled in England

Selected provider countries: difference between cycle and 2018 cycle (at 15 days after A level results day)

- England
- Northern Ireland
- Scotland
- Wales
- UK



Note: The percentage change is not plotted in the above chart for groups with fewer than 30 placed applicants in any one cycle.

B.20 Placed applicants at 15 days after A level results day: domiciled in England

Placed applicants by provider country (at 15 days after A level results day)

Country of provider	2010	2011	2012	2013	2014	2015	2016	2017	2018	2019
England	326,050	337,180	308,070	329,350	339,980	350,810	352,630	345,930	335,840	334,550
Northern Ireland	220	240	260	260	440	570	320	340	320	300
Scotland	3,470	3,210	4,050	4,150	4,760	4,600	4,880	5,010	4,590	4,330
Wales	10,110	11,150	9,330	10,240	10,540	10,350	10,680	10,430	9,880	9,730
UK	339,840	351,780	321,710	344,000	355,720	366,320	368,510	361,710	350,620	348,920

B.21 Placed applicants at 15 days after A level results day: domiciled in England

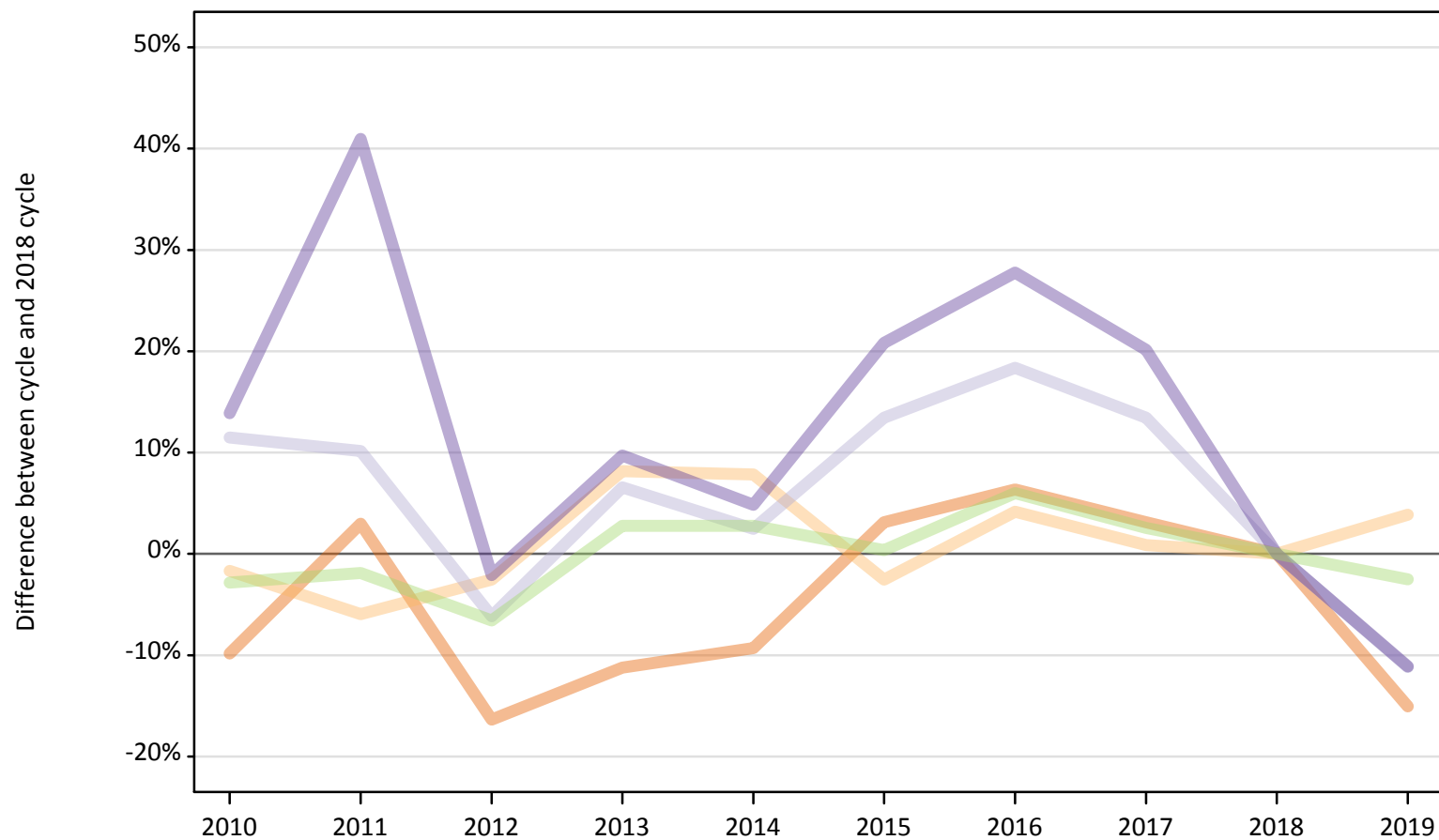
Selected provider countries: difference between cycle and 2018 cycle (at 15 days after A level results day)

Country of provider	2010	2011	2012	2013	2014	2015	2016	2017	2018	2019
England	-3%	0%	-8%	-2%	1%	4%	5%	3%	0%	-0%
Northern Ireland	-31%	-24%	-19%	-17%	39%	78%	-0%	6%	0%	-6%
Scotland	-24%	-30%	-12%	-10%	4%	0%	6%	9%	0%	-6%
Wales	2%	13%	-5%	4%	7%	5%	8%	6%	0%	-1%
UK	-3%	0%	-8%	-2%	1%	4%	5%	3%	0%	-0%

Note: The percentage change is not recorded in the above table for groups with fewer than 10 placed applicants in that cycle or in the 2018 cycle.

B.22 Placed applicants at 15 days after A level results day: domiciled in Northern Ireland
Selected provider countries: difference between cycle and 2018 cycle (at 15 days after A level results day)

- England
- Northern Ireland
- Scotland
- Wales
- UK



Note: The percentage change is not plotted in the above chart for groups with fewer than 30 placed applicants in any one cycle.

B.23 Placed applicants at 15 days after A level results day: domiciled in Northern Ireland

Placed applicants by provider country (at 15 days after A level results day)

Country of provider	2010	2011	2012	2013	2014	2015	2016	2017	2018	2019
England	3,420	3,900	3,170	3,370	3,440	3,910	4,030	3,910	3,790	3,220
Northern Ireland	8,830	8,440	8,750	9,710	9,680	8,750	9,350	9,060	8,980	9,330
Scotland	1,090	1,070	920	1,040	1,000	1,110	1,150	1,110	980	870
Wales	160	200	140	160	150	170	180	170	140	130
UK	13,500	13,630	12,980	14,270	14,270	13,940	14,720	14,250	13,890	13,540

B.24 Placed applicants at 15 days after A level results day: domiciled in Northern Ireland

Selected provider countries: difference between cycle and 2018 cycle (at 15 days after A level results day)

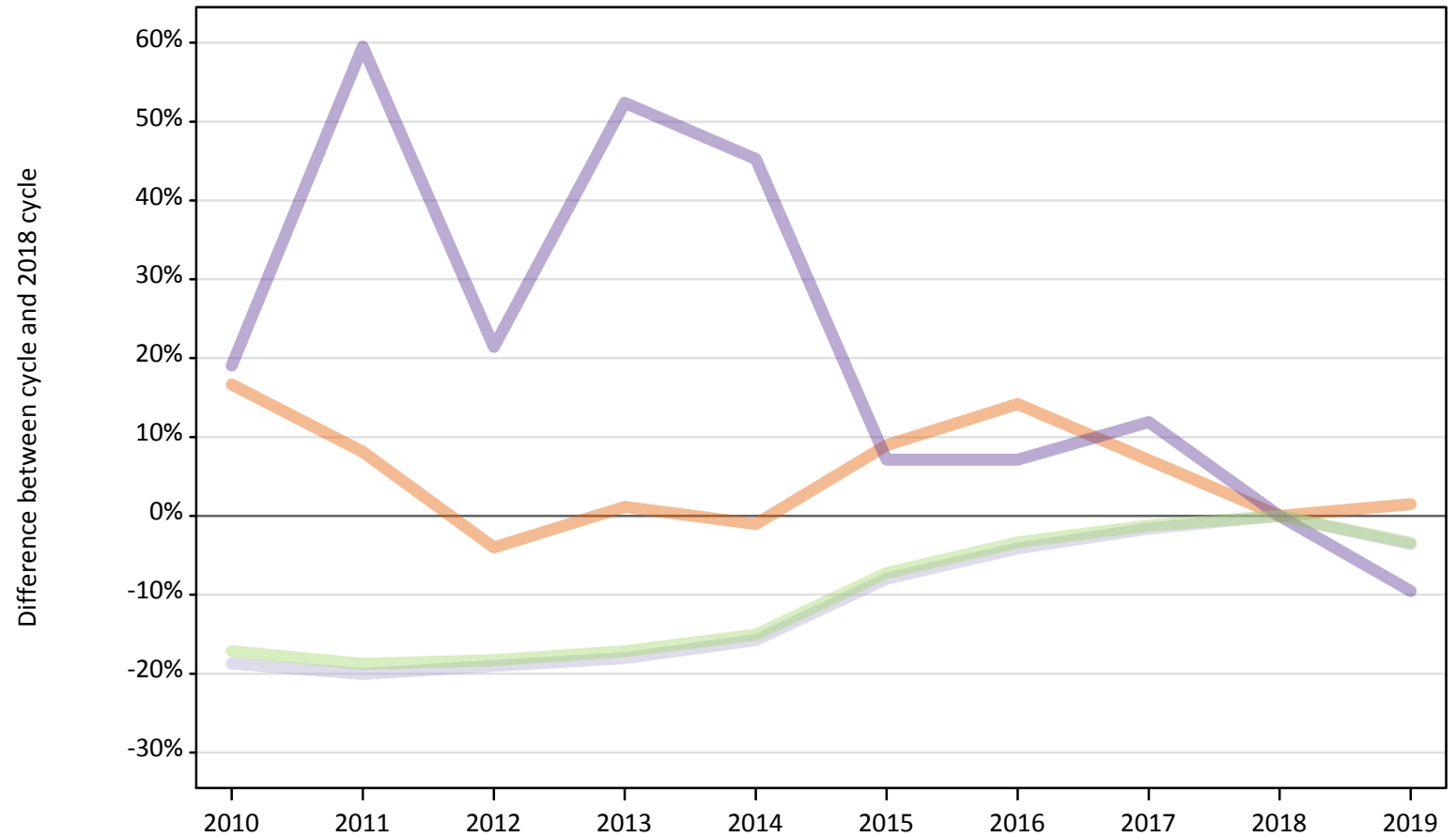
Country of provider	2010	2011	2012	2013	2014	2015	2016	2017	2018	2019
England	-10%	3%	-16%	-11%	-9%	3%	6%	3%	0%	-15%
Northern Ireland	-2%	-6%	-3%	8%	8%	-3%	4%	1%	0%	4%
Scotland	11%	10%	-6%	7%	2%	13%	18%	13%	0%	-11%
Wales	14%	41%	-2%	10%	5%	21%	28%	20%	0%	-11%
UK	-3%	-2%	-7%	3%	3%	0%	6%	3%	0%	-2%

Note: The percentage change is not recorded in the above table for groups with fewer than 10 placed applicants in that cycle or in the 2018 cycle.

B.25 Placed applicants at 15 days after A level results day: domiciled in Scotland

Selected provider countries: difference between cycle and 2018 cycle (at 15 days after A level results day)

- England
- Northern Ireland
- Scotland
- Wales
- UK



Note: The percentage change is not plotted in the above chart for groups with fewer than 30 placed applicants in any one cycle.

B.26 Placed applicants at 15 days after A level results day: domiciled in Scotland

Placed applicants by provider country (at 15 days after A level results day)

Country of provider	2010	2011	2012	2013	2014	2015	2016	2017	2018	2019
England	1,720	1,600	1,420	1,490	1,460	1,610	1,680	1,580	1,480	1,500
Northern Ireland	20	20	30	20	20	20	20	30	30	20
Scotland	26,940	26,500	26,850	27,170	27,930	30,510	31,780	32,620	33,150	31,960
Wales	50	70	50	60	60	50	50	50	40	40
UK	28,730	28,180	28,340	28,740	29,470	32,180	33,520	34,270	34,690	33,520

B.27 Placed applicants at 15 days after A level results day: domiciled in Scotland

Selected provider countries: difference between cycle and 2018 cycle (at 15 days after A level results day)

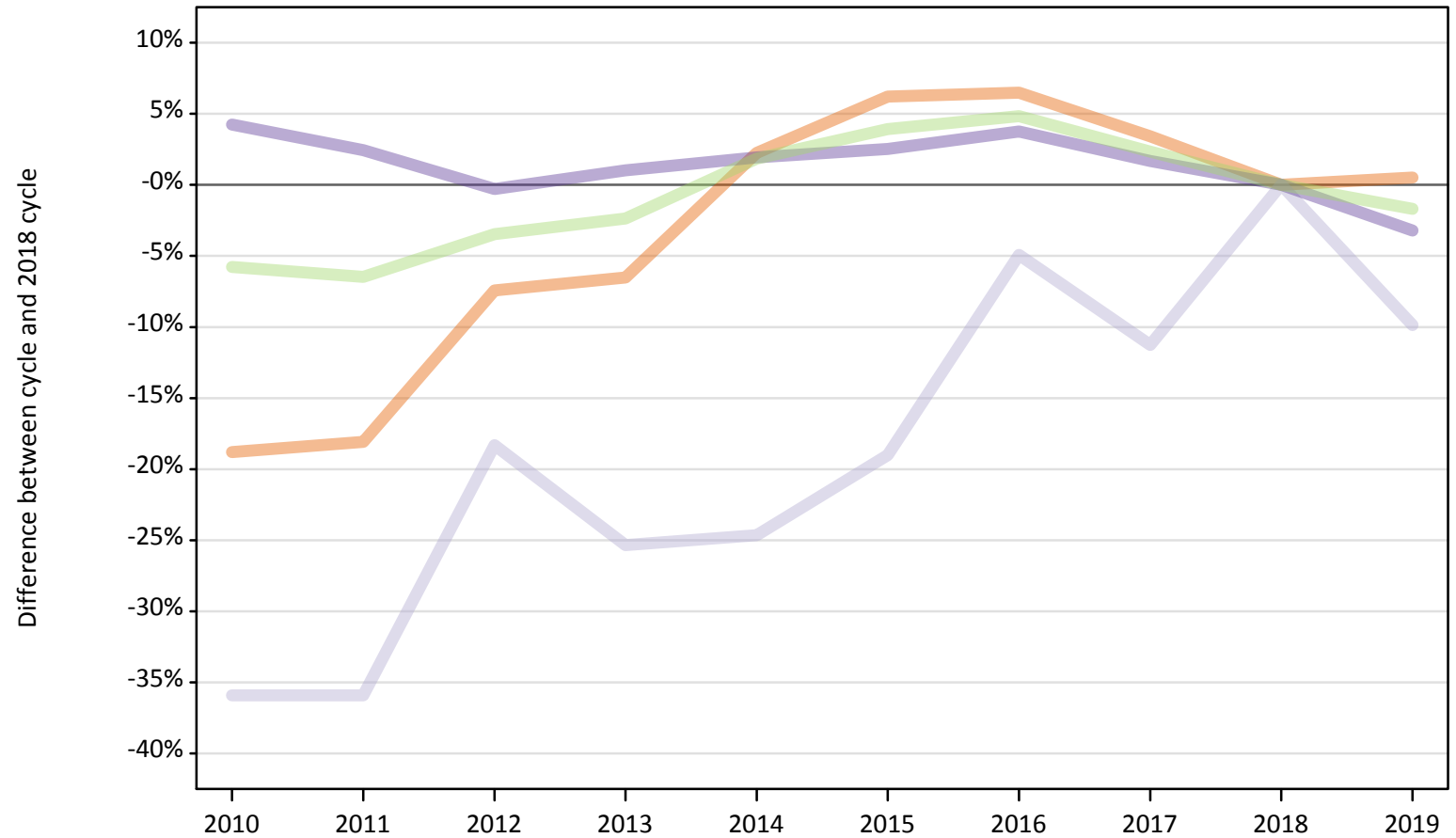
Country of provider	2010	2011	2012	2013	2014	2015	2016	2017	2018	2019
England	17%	8%	-4%	1%	-1%	9%	14%	7%	0%	1%
Northern Ireland	-15%	-30%	-4%	-44%	-37%	-26%	-30%	19%	0%	-30%
Scotland	-19%	-20%	-19%	-18%	-16%	-8%	-4%	-2%	0%	-4%
Wales	19%	60%	21%	52%	45%	7%	7%	12%	0%	-10%
UK	-17%	-19%	-18%	-17%	-15%	-7%	-3%	-1%	0%	-3%

Note: The percentage change is not recorded in the above table for groups with fewer than 10 placed applicants in that cycle or in the 2018 cycle.

B.28 Placed applicants at 15 days after A level results day: domiciled in Wales

Selected provider countries: difference between cycle and 2018 cycle (at 15 days after A level results day)

- England
- Northern Ireland
- Scotland
- Wales
- UK



Note: The percentage change is not plotted in the above chart for groups with fewer than 30 placed applicants in any one cycle.

B.29 Placed applicants at 15 days after A level results day: domiciled in Wales

Placed applicants by provider country (at 15 days after A level results day)

Country of provider	2010	2011	2012	2013	2014	2015	2016	2017	2018	2019
England	6,310	6,370	7,190	7,260	7,950	8,250	8,270	8,040	7,770	7,810
Northern Ireland	10	10	0	10	10	10	10	20	10	10
Scotland	90	90	120	110	110	120	140	130	140	130
Wales	11,000	10,820	10,530	10,670	10,760	10,830	10,950	10,730	10,560	10,220
UK	17,410	17,280	17,840	18,040	18,820	19,210	19,370	18,910	18,480	18,170

B.30 Placed applicants at 15 days after A level results day: domiciled in Wales

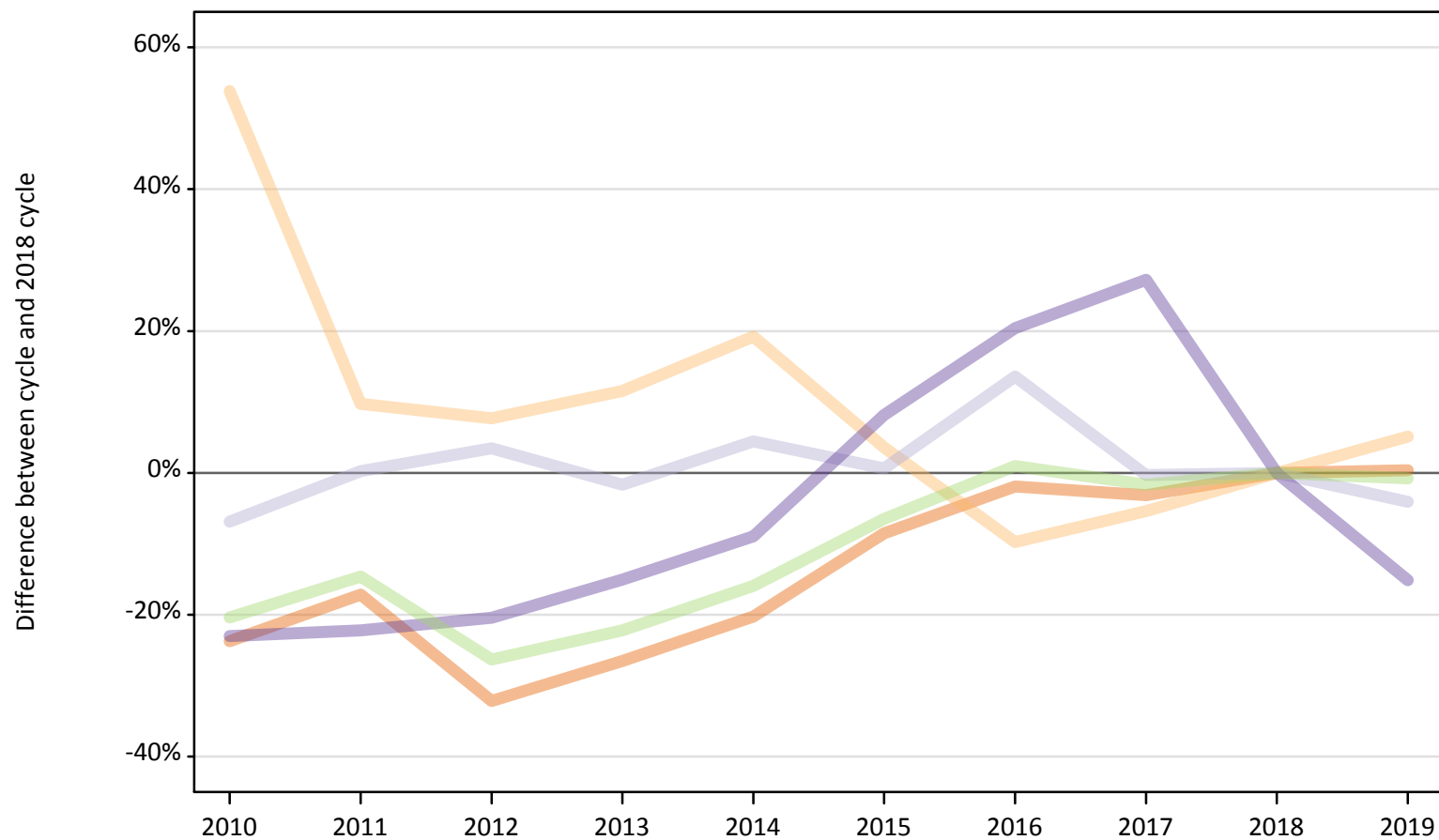
Selected provider countries: difference between cycle and 2018 cycle (at 15 days after A level results day)

Country of provider	2010	2011	2012	2013	2014	2015	2016	2017	2018	2019
England	-19%	-18%	-7%	-7%	2%	6%	6%	3%	0%	1%
Northern Ireland						30%	10%	50%	0%	20%
Scotland	-36%	-36%	-18%	-25%	-25%	-19%	-5%	-11%	0%	-10%
Wales	4%	2%	-0%	1%	2%	3%	4%	2%	0%	-3%
UK	-6%	-6%	-3%	-2%	2%	4%	5%	2%	0%	-2%

Note: The percentage change is not recorded in the above table for groups with fewer than 10 placed applicants in that cycle or in the 2018 cycle.

B.31 Placed applicants at 15 days after A level results day: domiciled in EU (excluding UK)
Selected provider countries: difference between cycle and 2018 cycle (at 15 days after A level results day)

- England
- Northern Ireland
- Scotland
- Wales
- UK



Note: The percentage change is not plotted in the above chart for groups with fewer than 30 placed applicants in any one cycle.

B.32 Placed applicants at 15 days after A level results day: domiciled in EU (excluding UK)

Placed applicants by provider country (at 15 days after A level results day)

Country of provider	2010	2011	2012	2013	2014	2015	2016	2017	2018	2019
England	18,380	19,960	16,350	17,700	19,210	22,050	23,640	23,340	24,100	24,180
Northern Ireland	600	430	420	440	470	400	350	370	390	410
Scotland	3,770	4,060	4,190	3,990	4,230	4,080	4,600	4,040	4,050	3,890
Wales	860	870	890	950	1,020	1,210	1,350	1,420	1,120	950
UK	23,610	25,320	21,850	23,070	24,930	27,740	29,940	29,170	29,660	29,430

B.33 Placed applicants at 15 days after A level results day: domiciled in EU (excluding UK)

Selected provider countries: difference between cycle and 2018 cycle (at 15 days after A level results day)

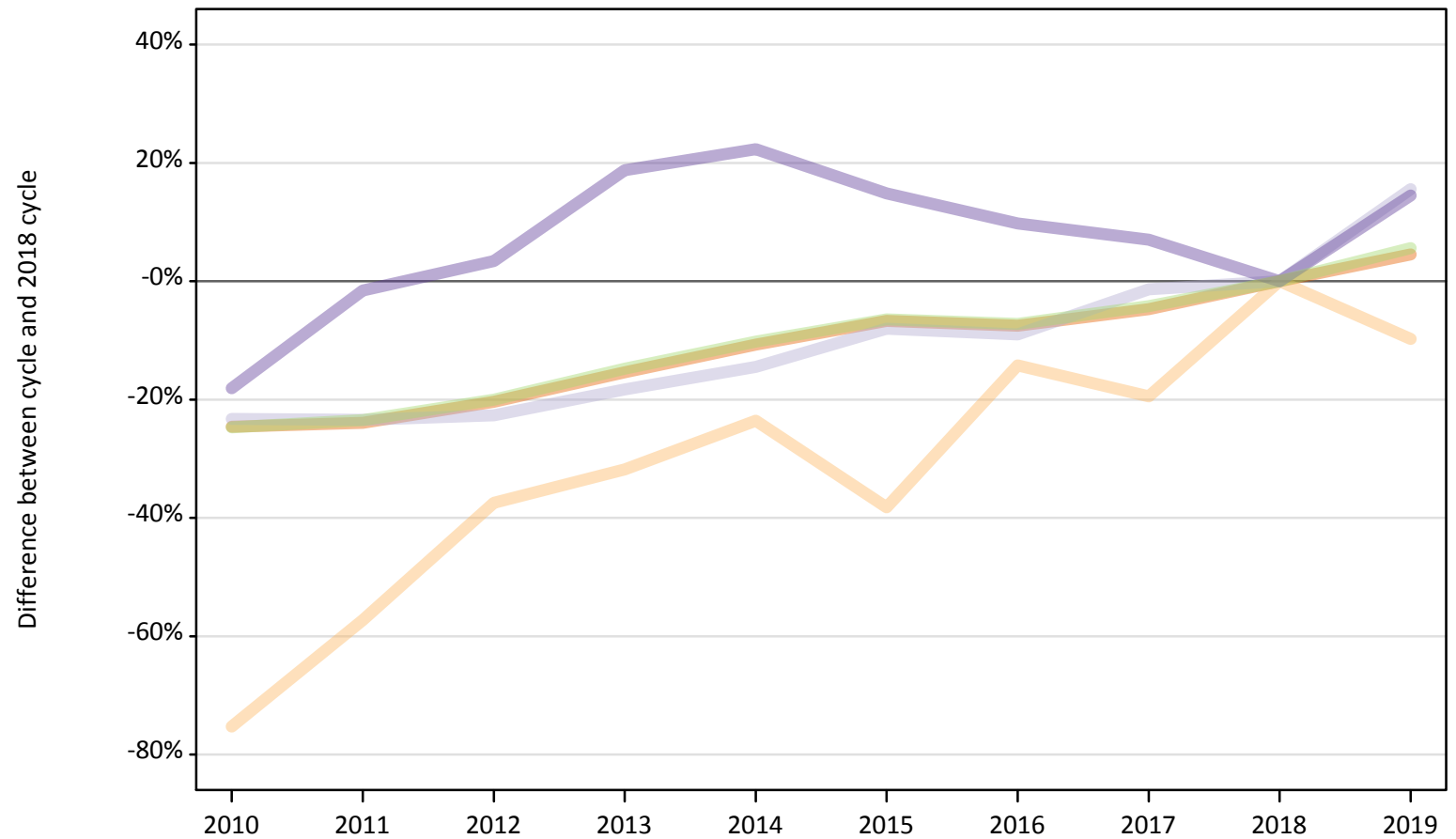
Country of provider	2010	2011	2012	2013	2014	2015	2016	2017	2018	2019
England	-24%	-17%	-32%	-27%	-20%	-9%	-2%	-3%	0%	0%
Northern Ireland	54%	10%	8%	12%	19%	4%	-10%	-5%	0%	5%
Scotland	-7%	0%	3%	-2%	4%	1%	14%	-0%	0%	-4%
Wales	-23%	-22%	-20%	-15%	-9%	8%	20%	27%	0%	-15%
UK	-20%	-15%	-26%	-22%	-16%	-6%	1%	-2%	0%	-1%

Note: The percentage change is not recorded in the above table for groups with fewer than 10 placed applicants in that cycle or in the 2018 cycle.

B.34 Placed applicants at 15 days after A level results day: domiciled in Not EU

Selected provider countries: difference between cycle and 2018 cycle (at 15 days after A level results day)

- England
- Northern Ireland
- Scotland
- Wales
- UK



Note: The percentage change is not plotted in the above chart for groups with fewer than 30 placed applicants in any one cycle.

B.35 Placed applicants at 15 days after A level results day: domiciled in Not EU

Placed applicants by provider country (at 15 days after A level results day)

Country of provider	2010	2011	2012	2013	2014	2015	2016	2017	2018	2019
England	24,790	25,020	26,180	27,820	29,360	30,670	30,410	31,330	32,880	34,380
Northern Ireland	70	110	170	180	200	170	230	220	270	240
Scotland	2,270	2,260	2,280	2,410	2,530	2,720	2,690	2,910	2,950	3,410
Wales	840	1,010	1,060	1,210	1,250	1,170	1,120	1,090	1,020	1,170
UK	27,960	28,400	29,690	31,630	33,340	34,730	34,450	35,560	37,120	39,200

B.36 Placed applicants at 15 days after A level results day: domiciled in Not EU

Selected provider countries: difference between cycle and 2018 cycle (at 15 days after A level results day)

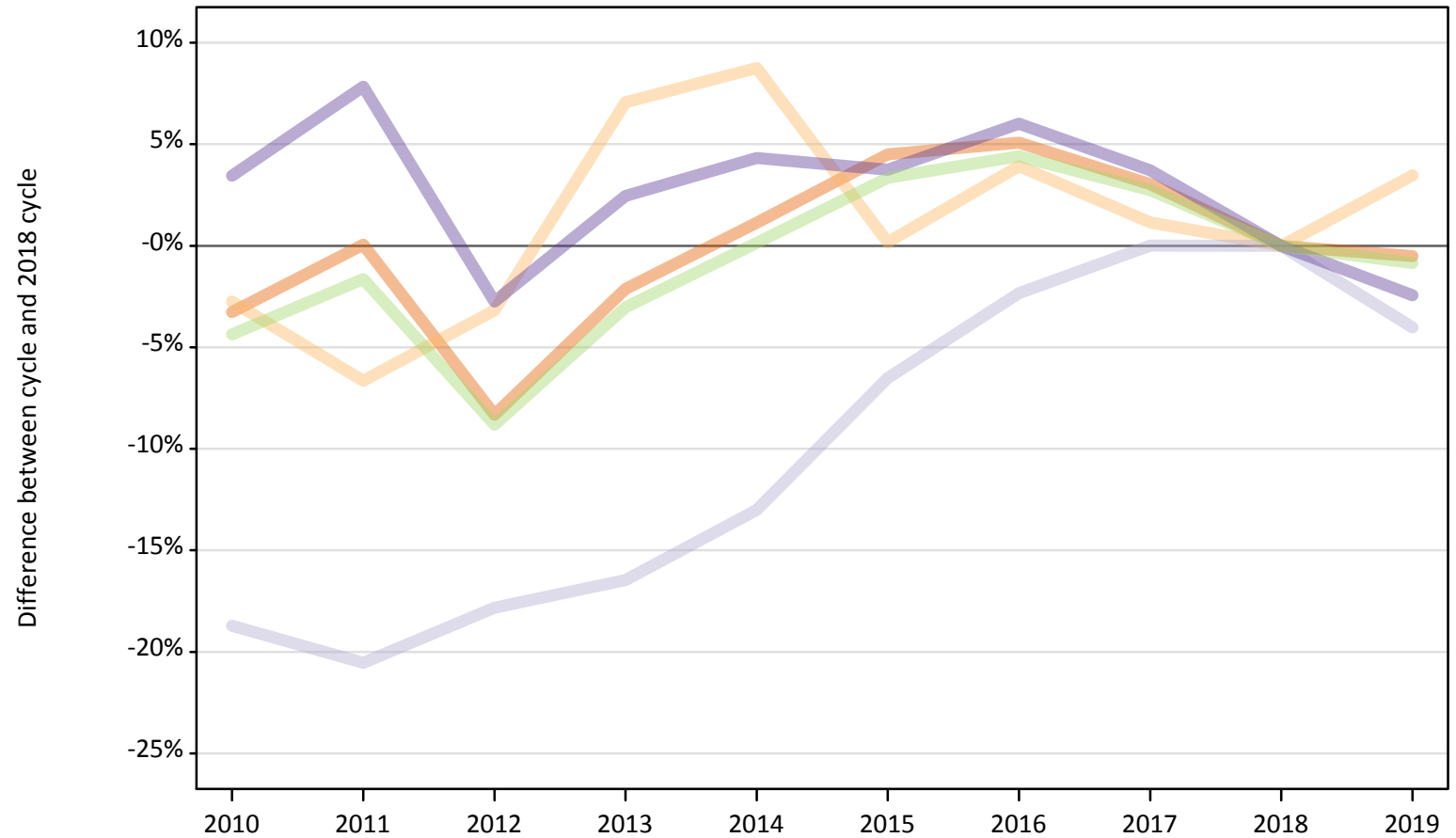
Country of provider	2010	2011	2012	2013	2014	2015	2016	2017	2018	2019
England	-25%	-24%	-20%	-15%	-11%	-7%	-8%	-5%	0%	5%
Northern Ireland	-75%	-57%	-37%	-32%	-24%	-38%	-14%	-19%	0%	-10%
Scotland	-23%	-23%	-23%	-18%	-14%	-8%	-9%	-1%	0%	16%
Wales	-18%	-2%	3%	19%	22%	15%	10%	7%	0%	14%
UK	-25%	-24%	-20%	-15%	-10%	-6%	-7%	-4%	0%	6%

Note: The percentage change is not recorded in the above table for groups with fewer than 10 placed applicants in that cycle or in the 2018 cycle.

B.37 Placed applicants at 15 days after A level results day: domiciled in UK

Selected provider countries: difference between cycle and 2018 cycle (at 15 days after A level results day)

- England
- Northern Ireland
- Scotland
- Wales
- UK



Note: The percentage change is not plotted in the above chart for groups with fewer than 30 placed applicants in any one cycle.

B.38 Placed applicants at 15 days after A level results day: domiciled in UK

Placed applicants by provider country (at 15 days after A level results day)

Country of provider	2010	2011	2012	2013	2014	2015	2016	2017	2018	2019
England	337,490	349,040	319,850	341,470	352,820	364,580	366,620	359,450	348,870	347,080
Northern Ireland	9,080	8,710	9,040	9,990	10,150	9,350	9,700	9,440	9,330	9,660
Scotland	31,580	30,880	31,930	32,460	33,800	36,320	37,950	38,860	38,850	37,290
Wales	21,330	22,230	20,050	21,130	21,510	21,390	21,860	21,380	20,620	20,120
UK	399,480	410,860	380,870	405,050	418,280	431,640	436,130	429,140	417,680	414,140

B.39 Placed applicants at 15 days after A level results day: domiciled in UK

Selected provider countries: difference between cycle and 2018 cycle (at 15 days after A level results day)

Country of provider	2010	2011	2012	2013	2014	2015	2016	2017	2018	2019
England	-3%	0%	-8%	-2%	1%	5%	5%	3%	0%	-1%
Northern Ireland	-3%	-7%	-3%	7%	9%	0%	4%	1%	0%	3%
Scotland	-19%	-21%	-18%	-16%	-13%	-7%	-2%	0%	0%	-4%
Wales	3%	8%	-3%	2%	4%	4%	6%	4%	0%	-2%
UK	-4%	-2%	-9%	-3%	0%	3%	4%	3%	0%	-1%

Note: The percentage change is not recorded in the above table for groups with fewer than 10 placed applicants in that cycle or in the 2018 cycle.