

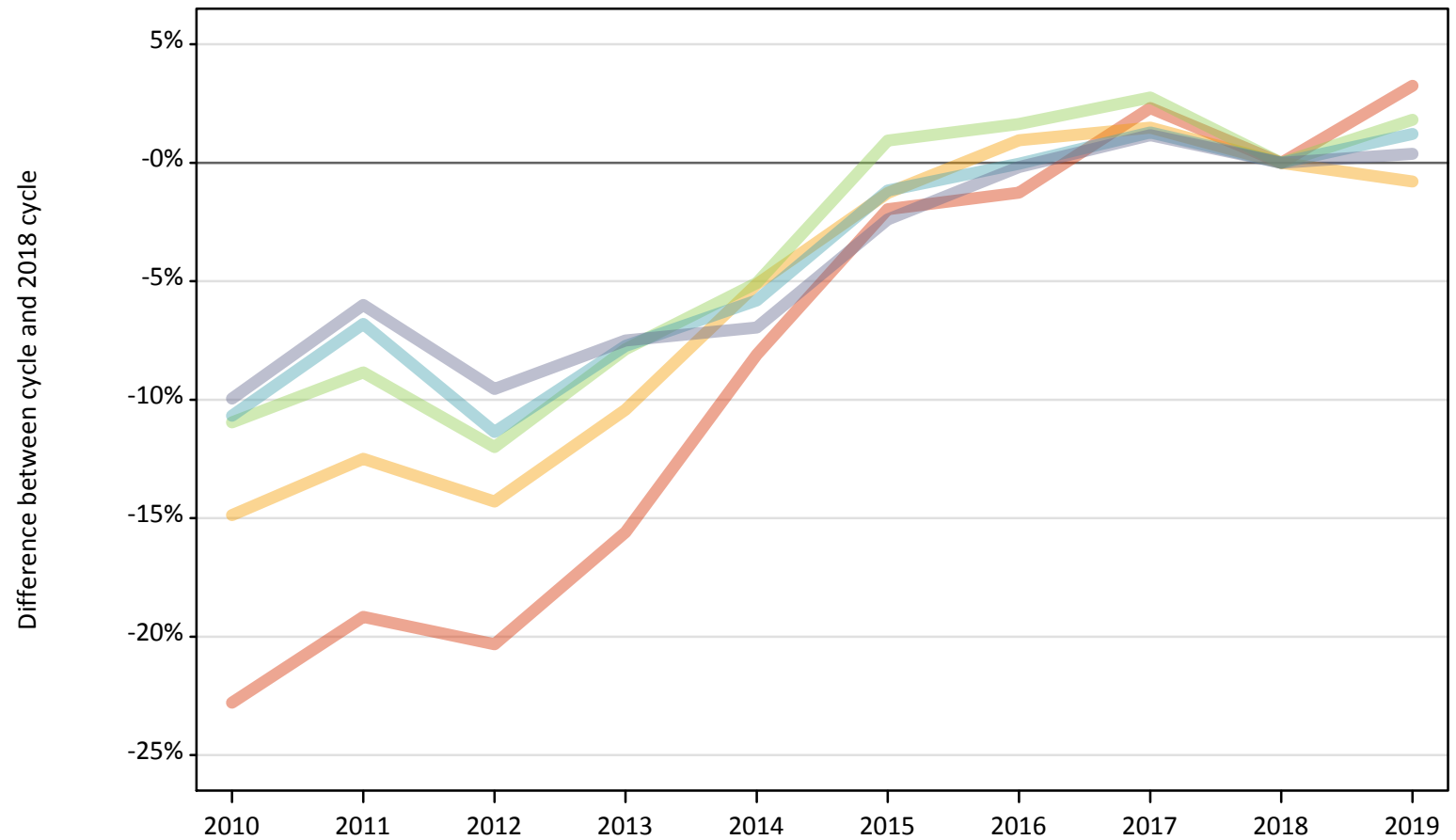
Daily Clearing Analysis: POLAR4

Analysis at 00:05 on Friday 30 August 2019 (15 days after A level results day)

P.1 Placed 18 year old applicants from England by POLAR4 quintile: 15 days after A level results day

Placed 18 year old applicants: change relative to 2018 cycle totals

- Quintile 1
- Quintile 2
- Quintile 3
- Quintile 4
- Quintile 5



Note: The percentage change is not plotted in the above chart for groups with fewer than 30 placed applicants in any one cycle.

P.2 Placed 18 year old applicants from England by POLAR4 quintile: 15 days after A level results day

Applicant Status	POLAR4	2010	2011	2012	2013	2014	2015	2016	2017	2018	2019
Placed	Quintile 1	17,050	17,850	17,600	18,640	20,290	21,650	21,800	22,590	22,080	22,800
	Quintile 2	26,140	26,870	26,320	27,510	29,130	30,320	31,000	31,160	30,710	30,460
	Quintile 3	33,340	34,130	32,950	34,490	35,540	37,790	38,050	38,470	37,440	38,120
	Quintile 4	41,520	43,320	41,200	42,890	43,780	45,940	46,470	47,080	46,480	47,050
	Quintile 5	59,530	62,150	59,800	61,150	61,510	64,530	65,990	66,880	66,110	66,360

P.3 Placed 18 year old applicants from England by POLAR4 quintile: 15 days after A level results day

Placed 18 year old applicants: change relative to 2018 cycle totals

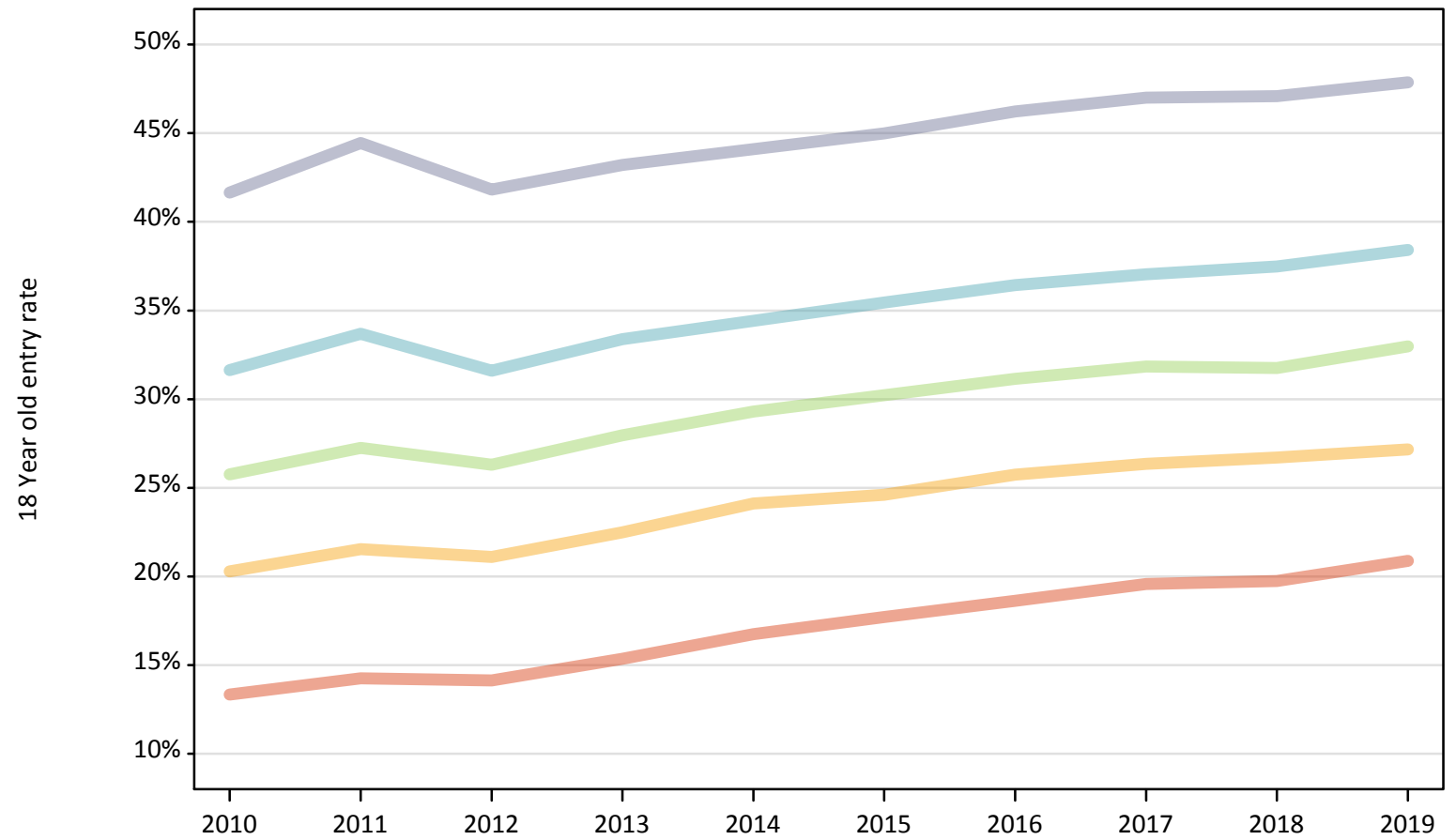
Applicant Status	POLAR4	2010	2011	2012	2013	2014	2015	2016	2017	2018	2019
Placed	Quintile 1	-23%	-19%	-20%	-16%	-8%	-2%	-1%	2%	0%	3%
	Quintile 2	-15%	-12%	-14%	-10%	-5%	-1%	1%	1%	0%	-1%
	Quintile 3	-11%	-9%	-12%	-8%	-5%	1%	2%	3%	0%	2%
	Quintile 4	-11%	-7%	-11%	-8%	-6%	-1%	-0%	1%	0%	1%
	Quintile 5	-10%	-6%	-10%	-8%	-7%	-2%	-0%	1%	0%	0%

Note: The percentage change is not recorded in the above table for groups with fewer than 10 placed applicants in that cycle or in the 2018 cycle.

P.4 Placed 18 year old applicants from England by POLAR4 quintile: 15 days after A level results day

Placed 18 year old applicants: entry rate

- Quintile 1
- Quintile 2
- Quintile 3
- Quintile 4
- Quintile 5



P.5 Placed 18 year old applicants from England by POLAR4 quintile: 15 days after A level results day

Placed 18 year old applicants: entry rate

Applicant Status	POLAR4	2010	2011	2012	2013	2014	2015	2016	2017	2018	2019
Placed	Quintile 1	13.3%	14.3%	14.1%	15.3%	16.7%	17.7%	18.6%	19.6%	19.7%	20.9%
	Quintile 2	20.3%	21.5%	21.1%	22.5%	24.1%	24.6%	25.7%	26.4%	26.7%	27.2%
	Quintile 3	25.8%	27.2%	26.3%	28.0%	29.3%	30.2%	31.2%	31.8%	31.8%	33.0%
	Quintile 4	31.6%	33.7%	31.6%	33.4%	34.4%	35.5%	36.4%	37.0%	37.5%	38.4%
	Quintile 5	41.7%	44.4%	41.8%	43.2%	44.1%	45.0%	46.2%	47.0%	47.1%	47.9%

P.6 Placed 18 year old applicants from England by POLAR4 quintile: 15 days after A level results day

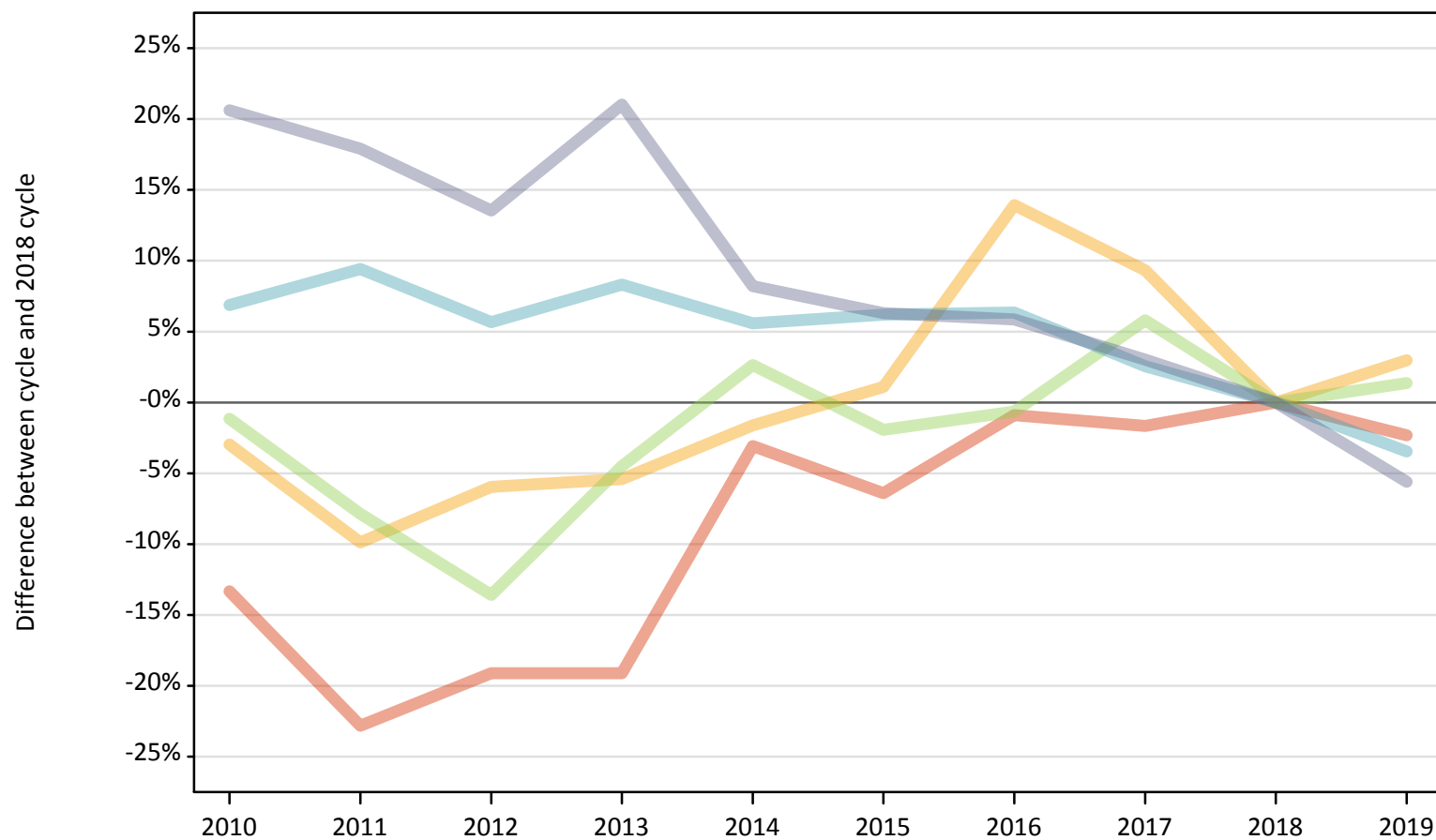
Placed 18 year old applicants: entry rate (indexed to 100 = Quintile 1)

Applicant Status	POLAR4	2010	2011	2012	2013	2014	2015	2016	2017	2018	2019
Placed	Quintile 1	100	100	100	100	100	100	100	100	100	100
	Quintile 2	152	151	149	147	144	139	138	135	135	130
	Quintile 3	193	191	186	182	175	171	167	163	161	158
	Quintile 4	237	236	224	218	206	200	196	189	190	184
	Quintile 5	312	312	296	282	263	254	248	240	239	229

P.7 Placed 18 year old applicants from Northern Ireland by POLAR4 quintile: 15 days after A level results day

Placed 18 year old applicants: change relative to 2018 cycle totals

- Quintile 1
- Quintile 2
- Quintile 3
- Quintile 4
- Quintile 5



Note: The percentage change is not plotted in the above chart for groups with fewer than 30 placed applicants in any one cycle.

P.8 Placed 18 year old applicants from Northern Ireland by POLAR4 quintile: 15 days after A level results day

Applicant Status	POLAR4	2010	2011	2012	2013	2014	2015	2016	2017	2018	2019
Placed	Quintile 1	680	600	630	630	760	730	770	770	780	760
	Quintile 2	720	670	700	700	730	750	840	810	740	760
	Quintile 3	1,380	1,290	1,210	1,340	1,440	1,370	1,390	1,480	1,400	1,420
	Quintile 4	2,220	2,280	2,200	2,250	2,200	2,210	2,210	2,130	2,080	2,010
	Quintile 5	3,830	3,750	3,610	3,840	3,440	3,380	3,360	3,270	3,180	3,000

P.9 Placed 18 year old applicants from Northern Ireland by POLAR4 quintile: 15 days after A level results day

Placed 18 year old applicants: change relative to 2018 cycle totals

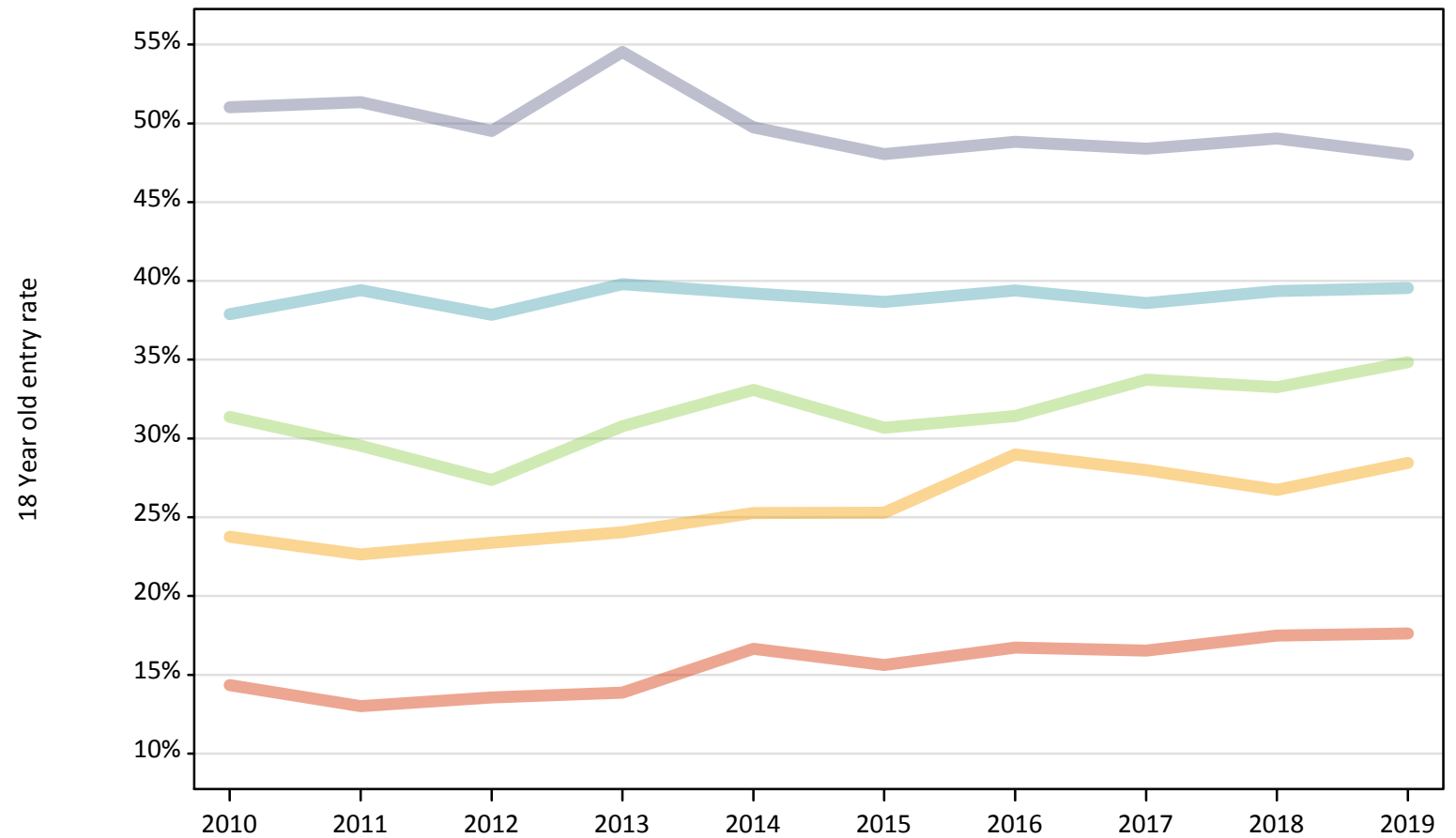
Applicant Status	POLAR4	2010	2011	2012	2013	2014	2015	2016	2017	2018	2019
Placed	Quintile 1	-13%	-23%	-19%	-19%	-3%	-6%	-1%	-2%	0%	-2%
	Quintile 2	-3%	-10%	-6%	-5%	-2%	1%	14%	9%	0%	3%
	Quintile 3	-1%	-8%	-14%	-5%	3%	-2%	-1%	6%	0%	1%
	Quintile 4	7%	9%	6%	8%	6%	6%	6%	3%	0%	-3%
	Quintile 5	21%	18%	14%	21%	8%	6%	6%	3%	0%	-6%

Note: The percentage change is not recorded in the above table for groups with fewer than 10 placed applicants in that cycle or in the 2018 cycle.

P.10 Placed 18 year old applicants from Northern Ireland by POLAR4 quintile: 15 days after A level results day

Placed 18 year old applicants: entry rate

- Quintile 1
- Quintile 2
- Quintile 3
- Quintile 4
- Quintile 5



P.11 Placed 18 year old applicants from Northern Ireland by POLAR4 quintile: 15 days after A level results day

Placed 18 year old applicants: entry rate

Applicant Status	POLAR4	2010	2011	2012	2013	2014	2015	2016	2017	2018	2019
Placed	Quintile 1	14.3%	13.0%	13.6%	13.9%	16.6%	15.6%	16.7%	16.5%	17.5%	17.6%
	Quintile 2	23.8%	22.6%	23.4%	24.0%	25.3%	25.3%	29.0%	28.0%	26.7%	28.4%
	Quintile 3	31.4%	29.5%	27.4%	30.8%	33.1%	30.7%	31.4%	33.7%	33.2%	34.8%
	Quintile 4	37.9%	39.4%	37.8%	39.8%	39.2%	38.7%	39.4%	38.6%	39.3%	39.5%
	Quintile 5	51.0%	51.3%	49.5%	54.5%	49.7%	48.1%	48.8%	48.4%	49.0%	48.0%

P.12 Placed 18 year old applicants from Northern Ireland by POLAR4 quintile: 15 days after A level results day

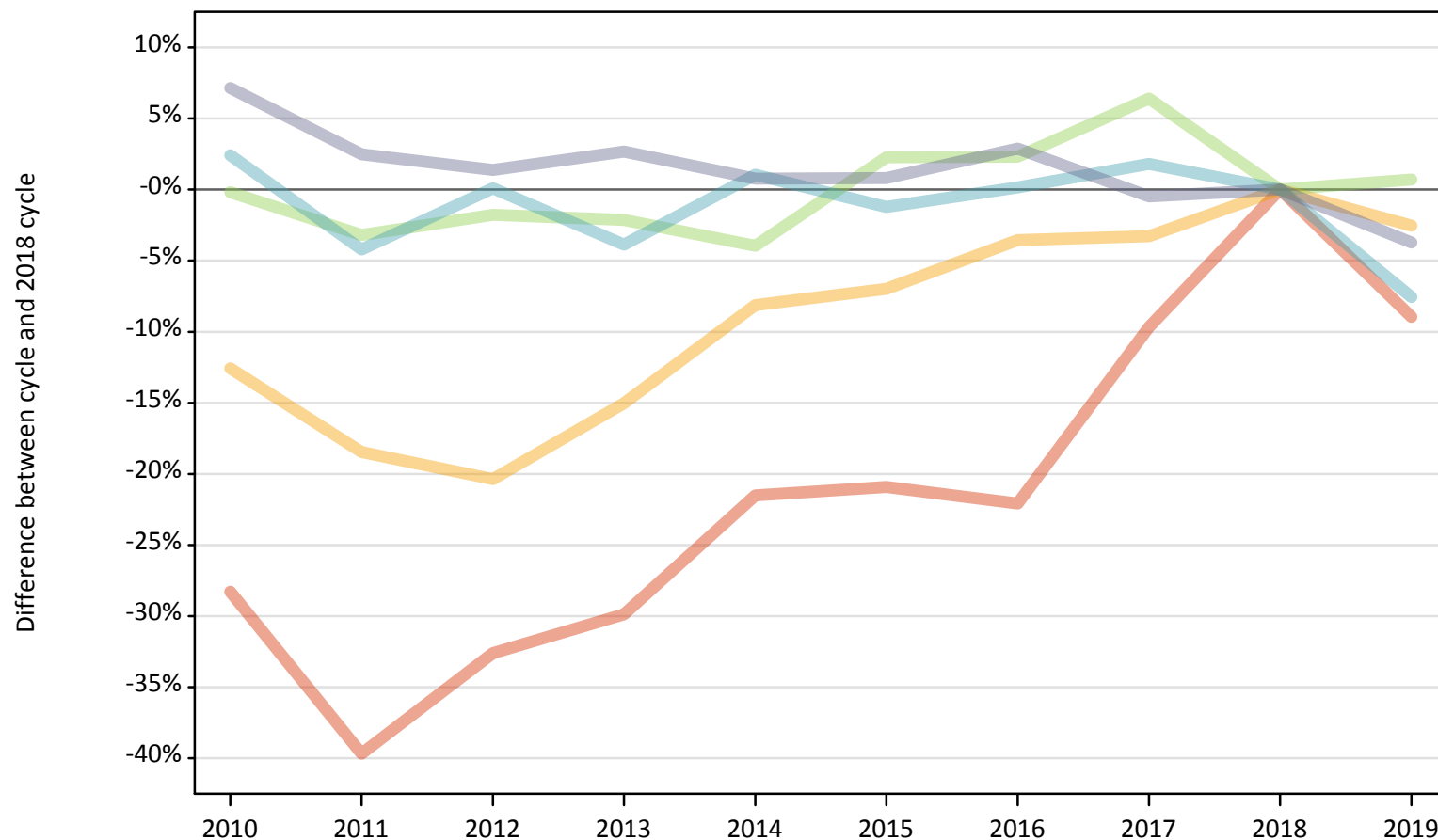
Placed 18 year old applicants: entry rate (indexed to 100 = Quintile 1)

Applicant Status	POLAR4	2010	2011	2012	2013	2014	2015	2016	2017	2018	2019
Placed	Quintile 1	100	100	100	100	100	100	100	100	100	100
	Quintile 2	166	174	172	173	152	162	173	169	153	161
	Quintile 3	219	227	202	222	199	196	188	204	190	198
	Quintile 4	264	303	279	287	235	248	236	233	225	224
	Quintile 5	356	395	365	393	299	308	292	292	280	272

P.13 Placed 18 year old applicants from Scotland by POLAR4 quintile: 15 days after A level results day

Placed 18 year old applicants: change relative to 2018 cycle totals

- Quintile 1
- Quintile 2
- Quintile 3
- Quintile 4
- Quintile 5



Note: The percentage change is not plotted in the above chart for groups with fewer than 30 placed applicants in any one cycle.

P.14 Placed 18 year old applicants from Scotland by POLAR4 quintile: 15 days after A level results day

Applicant Status	POLAR4	2010	2011	2012	2013	2014	2015	2016	2017	2018	2019
Placed	Quintile 1	500	420	470	490	540	550	540	630	690	630
	Quintile 2	1,280	1,190	1,170	1,240	1,340	1,360	1,410	1,420	1,460	1,430
	Quintile 3	2,250	2,180	2,210	2,200	2,160	2,300	2,300	2,390	2,250	2,270
	Quintile 4	3,440	3,210	3,360	3,220	3,390	3,310	3,360	3,420	3,350	3,100
	Quintile 5	7,290	6,980	6,900	6,990	6,860	6,860	7,000	6,770	6,810	6,550

P.15 Placed 18 year old applicants from Scotland by POLAR4 quintile: 15 days after A level results day

Placed 18 year old applicants: change relative to 2018 cycle totals

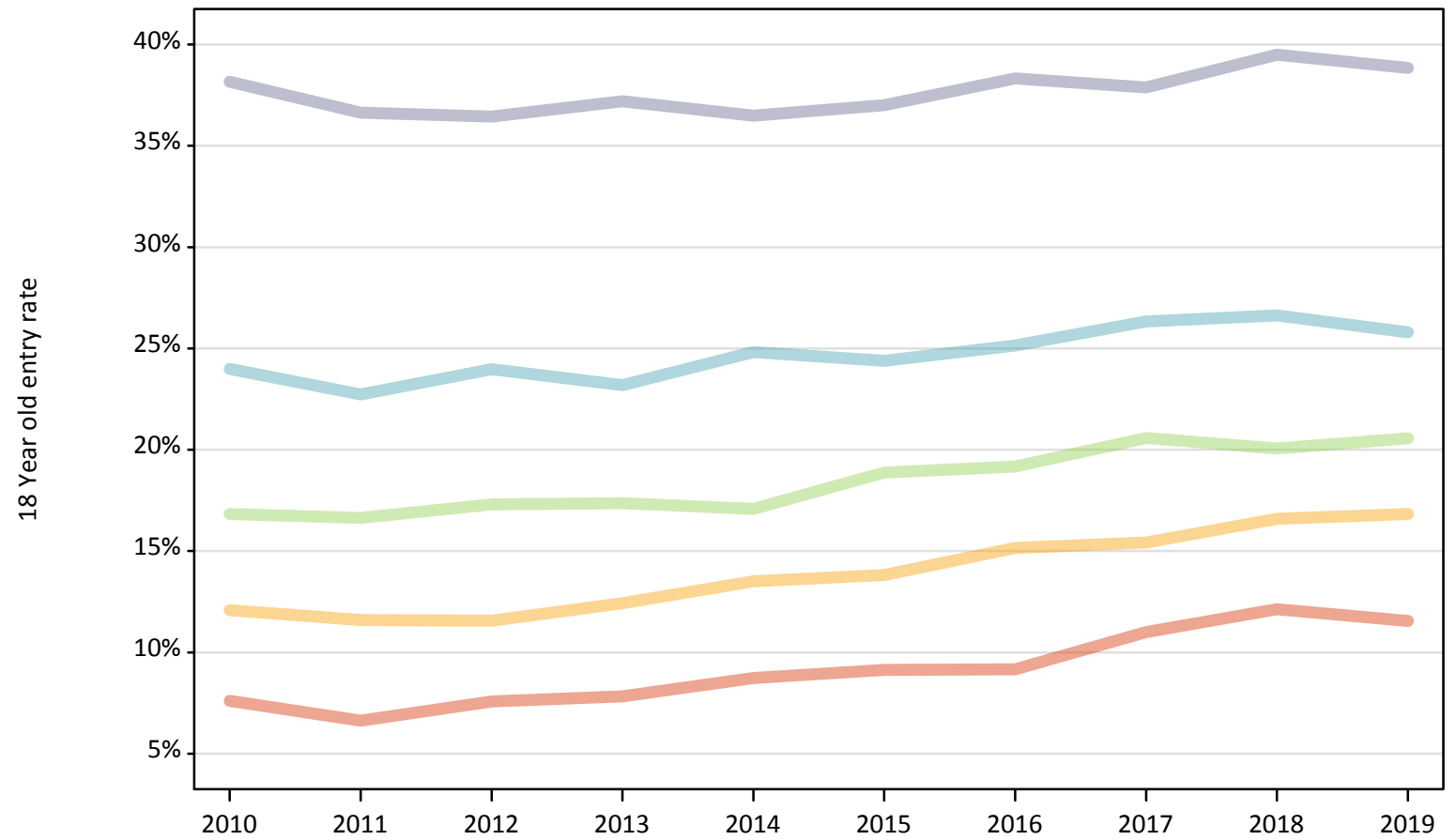
Applicant Status	POLAR4	2010	2011	2012	2013	2014	2015	2016	2017	2018	2019
Placed	Quintile 1	-28%	-40%	-33%	-30%	-22%	-21%	-22%	-10%	0%	-9%
	Quintile 2	-13%	-18%	-20%	-15%	-8%	-7%	-4%	-3%	0%	-3%
	Quintile 3	-0%	-3%	-2%	-2%	-4%	2%	2%	6%	0%	1%
	Quintile 4	2%	-4%	0%	-4%	1%	-1%	0%	2%	0%	-8%
	Quintile 5	7%	2%	1%	3%	1%	1%	3%	-0%	0%	-4%

Note: The percentage change is not recorded in the above table for groups with fewer than 10 placed applicants in that cycle or in the 2018 cycle.

P.16 Placed 18 year old applicants from Scotland by POLAR4 quintile: 15 days after A level results day

Placed 18 year old applicants: entry rate

- Quintile 1
- Quintile 2
- Quintile 3
- Quintile 4
- Quintile 5



P.17 Placed 18 year old applicants from Scotland by POLAR4 quintile: 15 days after A level results day

Placed 18 year old applicants: entry rate

Applicant Status	POLAR4	2010	2011	2012	2013	2014	2015	2016	2017	2018	2019
Placed	Quintile 1	7.6%	6.6%	7.6%	7.8%	8.7%	9.1%	9.2%	11.0%	12.1%	11.5%
	Quintile 2	12.1%	11.6%	11.6%	12.4%	13.5%	13.8%	15.2%	15.4%	16.6%	16.8%
	Quintile 3	16.8%	16.6%	17.3%	17.4%	17.1%	18.9%	19.2%	20.6%	20.1%	20.6%
	Quintile 4	24.0%	22.7%	24.0%	23.2%	24.8%	24.4%	25.1%	26.3%	26.6%	25.8%
	Quintile 5	38.2%	36.6%	36.4%	37.2%	36.5%	37.0%	38.3%	37.9%	39.5%	38.8%

P.18 Placed 18 year old applicants from Scotland by POLAR4 quintile: 15 days after A level results day

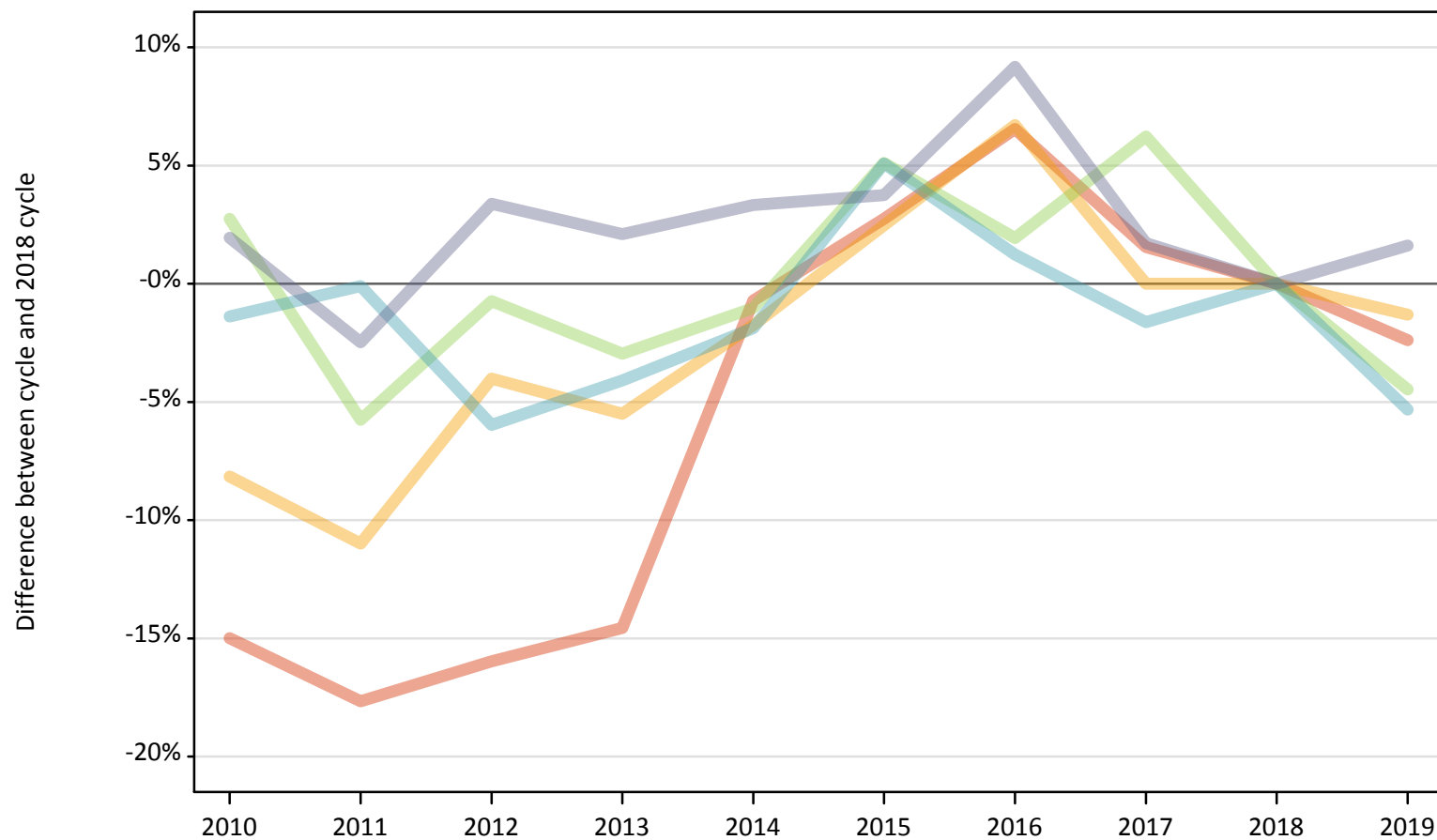
Placed 18 year old applicants: entry rate (indexed to 100 = Quintile 1)

Applicant Status	POLAR4	2010	2011	2012	2013	2014	2015	2016	2017	2018	2019
Placed	Quintile 1	100	100	100	100	100	100	100	100	100	100
	Quintile 2	159	175	152	159	155	151	165	140	137	146
	Quintile 3	221	251	228	222	196	207	209	187	165	178
	Quintile 4	315	343	316	296	284	267	274	239	219	223
	Quintile 5	502	553	481	475	418	405	418	344	326	336

P.19 Placed 18 year old applicants from Wales by POLAR4 quintile: 15 days after A level results day

Placed 18 year old applicants: change relative to 2018 cycle totals

- Quintile 1
- Quintile 2
- Quintile 3
- Quintile 4
- Quintile 5



Note: The percentage change is not plotted in the above chart for groups with fewer than 30 placed applicants in any one cycle.

P.20 Placed 18 year old applicants from Wales by POLAR4 quintile: 15 days after A level results day

Applicant Status	POLAR4	2010	2011	2012	2013	2014	2015	2016	2017	2018	2019
Placed	Quintile 1	1,210	1,170	1,190	1,210	1,410	1,460	1,510	1,440	1,420	1,390
	Quintile 2	2,040	1,980	2,130	2,100	2,180	2,270	2,370	2,220	2,220	2,190
	Quintile 3	2,390	2,190	2,310	2,260	2,300	2,450	2,370	2,470	2,330	2,220
	Quintile 4	2,000	2,030	1,910	1,940	1,990	2,130	2,050	1,990	2,030	1,920
	Quintile 5	2,140	2,050	2,170	2,150	2,170	2,180	2,300	2,140	2,100	2,140

P.21 Placed 18 year old applicants from Wales by POLAR4 quintile: 15 days after A level results day

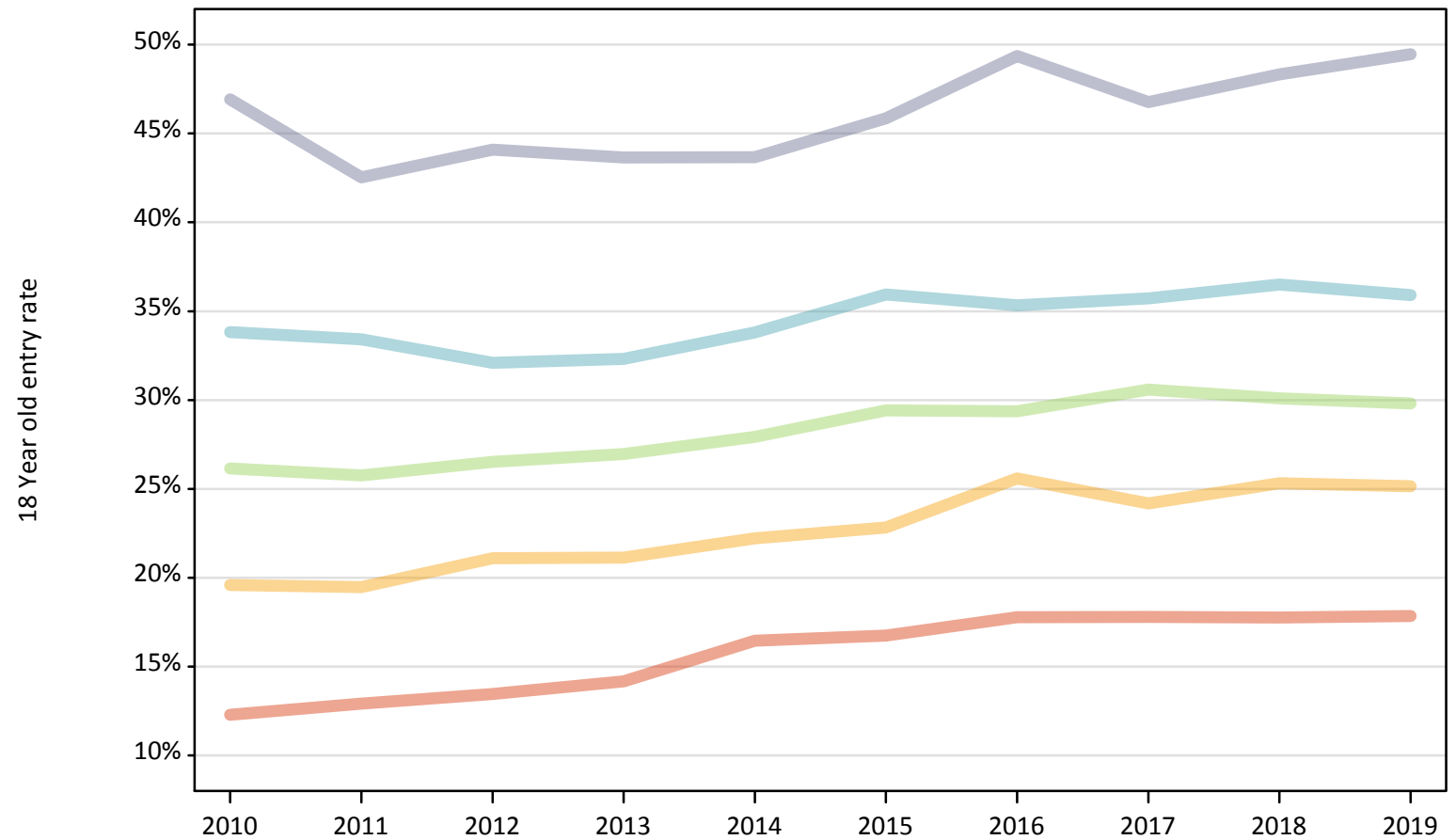
Placed 18 year old applicants: change relative to 2018 cycle totals

Applicant Status	POLAR4	2010	2011	2012	2013	2014	2015	2016	2017	2018	2019
Placed	Quintile 1	-15%	-18%	-16%	-15%	-1%	3%	7%	2%	0%	-2%
	Quintile 2	-8%	-11%	-4%	-5%	-2%	2%	7%	0%	0%	-1%
	Quintile 3	3%	-6%	-1%	-3%	-1%	5%	2%	6%	0%	-4%
	Quintile 4	-1%	-0%	-6%	-4%	-2%	5%	1%	-2%	0%	-5%
	Quintile 5	2%	-2%	3%	2%	3%	4%	9%	2%	0%	2%

Note: The percentage change is not recorded in the above table for groups with fewer than 10 placed applicants in that cycle or in the 2018 cycle.

P.22 Placed 18 year old applicants from Wales by POLAR4 quintile: 15 days after A level results day
Placed 18 year old applicants: entry rate

- Quintile 1
- Quintile 2
- Quintile 3
- Quintile 4
- Quintile 5



P.23 Placed 18 year old applicants from Wales by POLAR4 quintile: 15 days after A level results day

Placed 18 year old applicants: entry rate

Applicant Status	POLAR4	2010	2011	2012	2013	2014	2015	2016	2017	2018	2019
Placed	Quintile 1	12.3%	12.9%	13.4%	14.2%	16.4%	16.7%	17.8%	17.8%	17.8%	17.9%
	Quintile 2	19.6%	19.5%	21.1%	21.1%	22.2%	22.8%	25.6%	24.2%	25.3%	25.1%
	Quintile 3	26.1%	25.8%	26.5%	27.0%	27.9%	29.4%	29.4%	30.6%	30.1%	29.8%
	Quintile 4	33.8%	33.4%	32.1%	32.3%	33.8%	35.9%	35.3%	35.7%	36.5%	35.9%
	Quintile 5	46.9%	42.5%	44.1%	43.6%	43.7%	45.9%	49.4%	46.8%	48.3%	49.5%

P.24 Placed 18 year old applicants from Wales by POLAR4 quintile: 15 days after A level results day

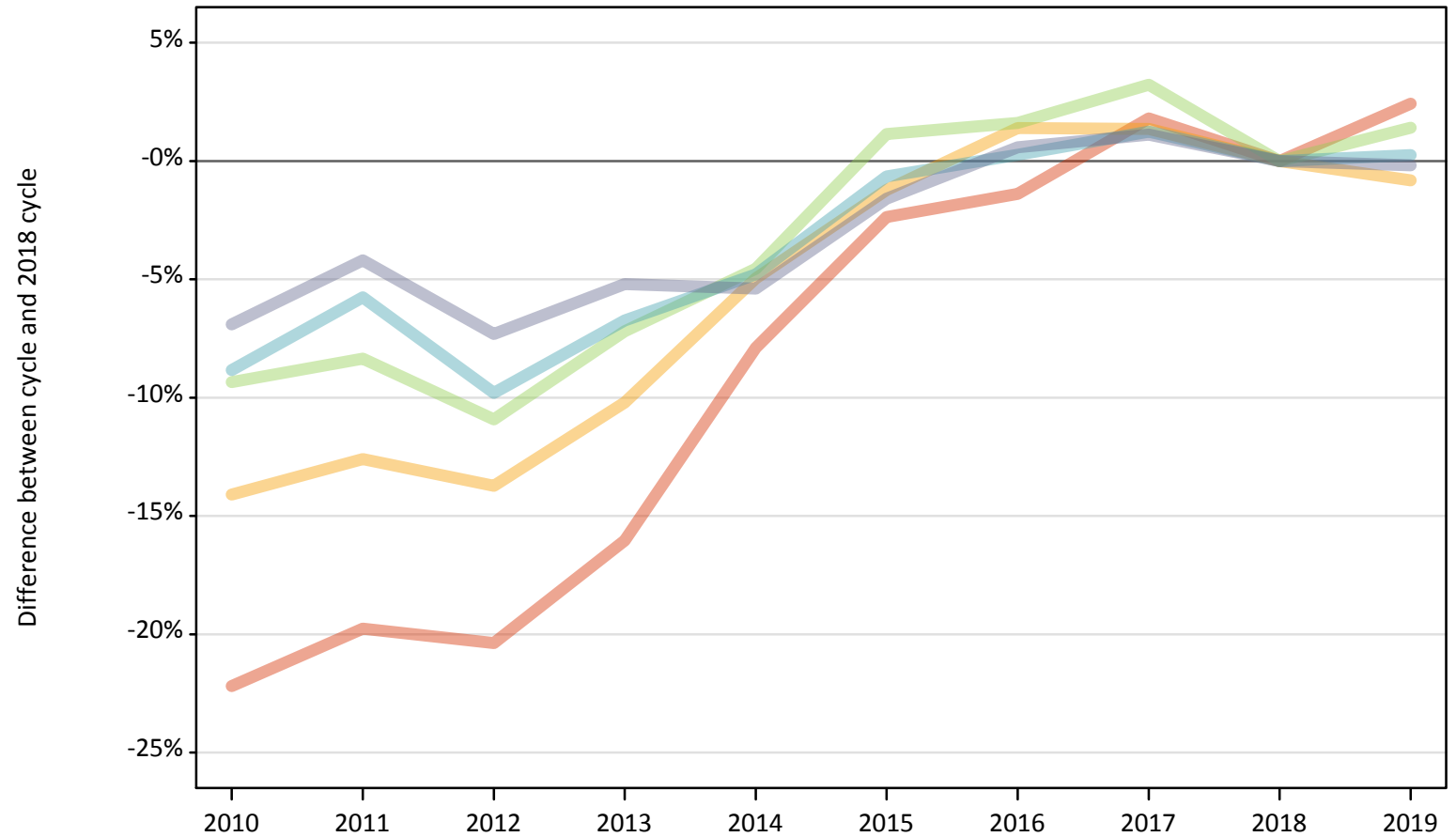
Placed 18 year old applicants: entry rate (indexed to 100 = Quintile 1)

Applicant Status	POLAR4	2010	2011	2012	2013	2014	2015	2016	2017	2018	2019
Placed	Quintile 1	100	100	100	100	100	100	100	100	100	100
	Quintile 2	159	151	157	149	135	136	144	136	143	141
	Quintile 3	213	199	197	190	170	176	165	172	169	167
	Quintile 4	275	259	239	228	206	215	199	201	205	201
	Quintile 5	382	329	328	308	265	274	278	263	272	277

P.25 Placed 18 year old applicants from the UK by POLAR4 quintile: 15 days after A level results day

Placed 18 year old applicants: change relative to 2018 cycle totals

- Quintile 1
- Quintile 2
- Quintile 3
- Quintile 4
- Quintile 5



Note: The percentage change is not plotted in the above chart for groups with fewer than 30 placed applicants in any one cycle.

P.26 Placed 18 year old applicants from the UK by POLAR4 quintile: 15 days after A level results day

Applicant Status	POLAR4	2010	2011	2012	2013	2014	2015	2016	2017	2018	2019
Placed	Quintile 1	19,430	20,040	19,890	20,970	23,010	24,390	24,630	25,430	24,980	25,580
	Quintile 2	30,180	30,700	30,310	31,540	33,380	34,700	35,620	35,600	35,130	34,840
	Quintile 3	39,360	39,790	38,670	40,290	41,440	43,910	44,120	44,820	43,420	44,030
	Quintile 4	49,180	50,840	48,660	50,310	51,360	53,590	54,090	54,620	53,950	54,080
	Quintile 5	72,800	74,920	72,480	74,130	73,980	76,950	78,650	79,060	78,200	78,050

P.27 Placed 18 year old applicants from the UK by POLAR4 quintile: 15 days after A level results day

Placed 18 year old applicants: change relative to 2018 cycle totals

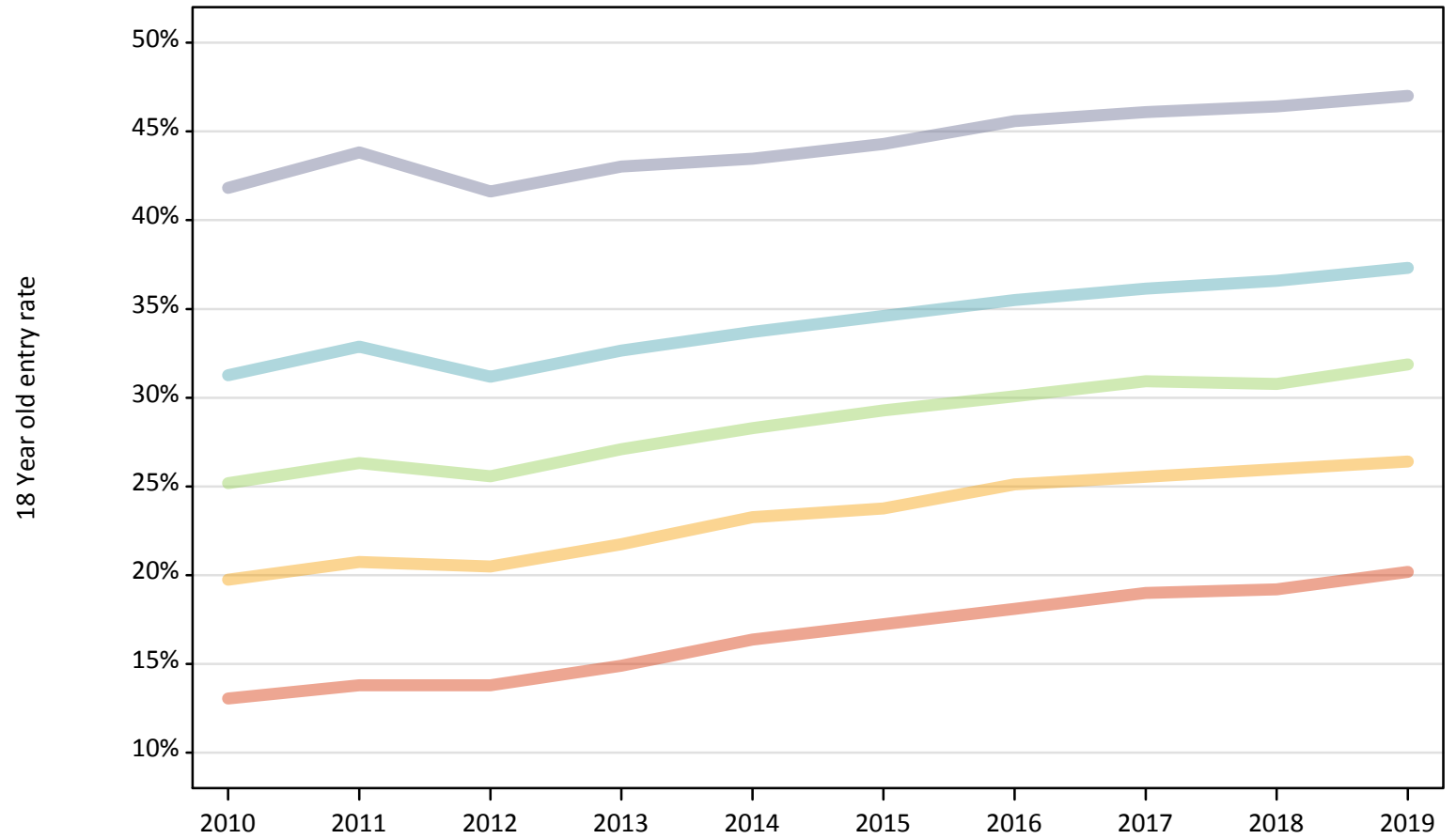
Applicant Status	POLAR4	2010	2011	2012	2013	2014	2015	2016	2017	2018	2019
Placed	Quintile 1	-22%	-20%	-20%	-16%	-8%	-2%	-1%	2%	0%	2%
	Quintile 2	-14%	-13%	-14%	-10%	-5%	-1%	1%	1%	0%	-1%
	Quintile 3	-9%	-8%	-11%	-7%	-5%	1%	2%	3%	0%	1%
	Quintile 4	-9%	-6%	-10%	-7%	-5%	-1%	0%	1%	0%	0%
	Quintile 5	-7%	-4%	-7%	-5%	-5%	-2%	1%	1%	0%	-0%

Note: The percentage change is not recorded in the above table for groups with fewer than 10 placed applicants in that cycle or in the 2018 cycle.

P.28 Placed 18 year old applicants from the UK by POLAR4 quintile: 15 days after A level results day

Placed 18 year old applicants: entry rate

- Quintile 1
- Quintile 2
- Quintile 3
- Quintile 4
- Quintile 5



P.29 Placed 18 year old applicants from the UK by POLAR4 quintile: 15 days after A level results day

Placed 18 year old applicants: entry rate

Applicant Status	POLAR4	2010	2011	2012	2013	2014	2015	2016	2017	2018	2019
Placed	Quintile 1	13.0%	13.8%	13.8%	14.9%	16.4%	17.2%	18.1%	19.0%	19.2%	20.2%
	Quintile 2	19.7%	20.7%	20.5%	21.7%	23.3%	23.8%	25.1%	25.5%	26.0%	26.4%
	Quintile 3	25.2%	26.3%	25.6%	27.1%	28.3%	29.3%	30.1%	30.9%	30.8%	31.9%
	Quintile 4	31.3%	32.9%	31.2%	32.7%	33.7%	34.6%	35.5%	36.1%	36.6%	37.3%
	Quintile 5	41.8%	43.8%	41.6%	43.0%	43.5%	44.3%	45.6%	46.1%	46.4%	47.0%

P.30 Placed 18 year old applicants from the UK by POLAR4 quintile: 15 days after A level results day

Placed 18 year old applicants: entry rate (indexed to 100 = Quintile 1)

Applicant Status	POLAR4	2010	2011	2012	2013	2014	2015	2016	2017	2018	2019
Placed	Quintile 1	100	100	100	100	100	100	100	100	100	100
	Quintile 2	151	150	149	146	142	138	139	134	135	131
	Quintile 3	193	191	185	182	173	170	166	163	160	158
	Quintile 4	240	238	226	219	206	201	196	190	190	185
	Quintile 5	321	317	302	289	266	257	252	243	242	233