

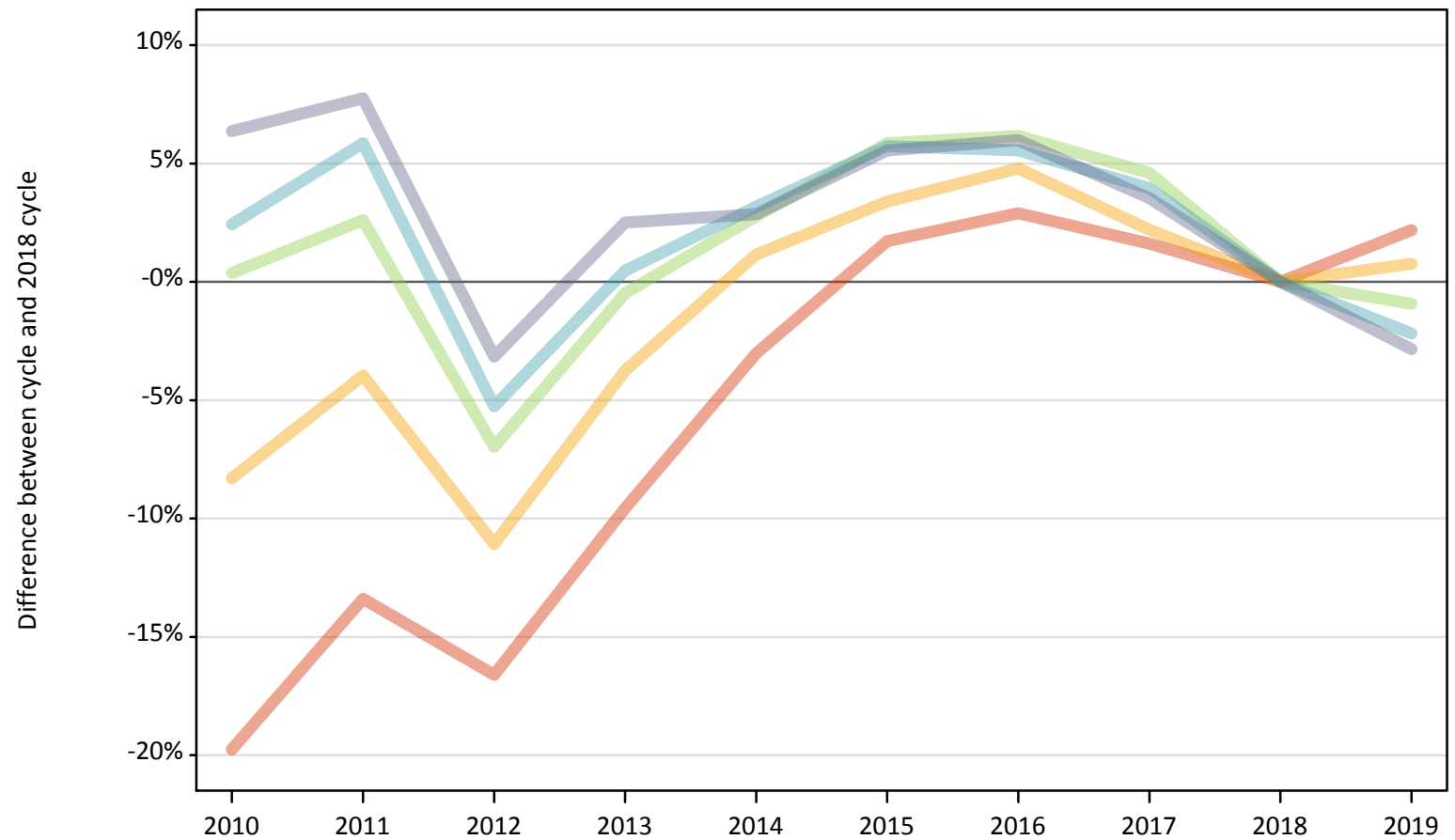
Daily Clearing Analysis: IMD2015

Analysis at 00:05 on Friday 30 August 2019 (15 days after A level results day)

J.1 Placed applicants from England by IMD2015 quintile: 15 days after A level results day

Placed applicants: change relative to 2018 cycle totals

- Quintile 1
- Quintile 2
- Quintile 3
- Quintile 4
- Quintile 5



Note: The percentage change is not plotted in the above chart for groups with fewer than 30 placed applicants in any one cycle.

J.2 Placed applicants from England by IMD2015 quintile: 15 days after A level results day

Applicant Status IMD2015		2010	2011	2012	2013	2014	2015	2016	2017	2018	2019
Placed	Quintile 1	52,900	57,090	54,970	59,610	63,920	67,050	67,830	66,980	65,920	67,360
	Quintile 2	58,680	61,460	56,900	61,600	64,740	66,160	67,060	65,400	63,990	64,480
	Quintile 3	65,370	66,820	60,580	64,810	66,930	68,940	69,140	68,120	65,120	64,520
	Quintile 4	72,980	75,430	67,510	71,590	73,510	75,340	75,210	74,070	71,250	69,700
	Quintile 5	88,870	90,030	80,900	85,640	85,940	88,190	88,550	86,500	83,550	81,180

J.3 Placed applicants from England by IMD2015 quintile: 15 days after A level results day

Placed applicants: change relative to 2018 cycle totals

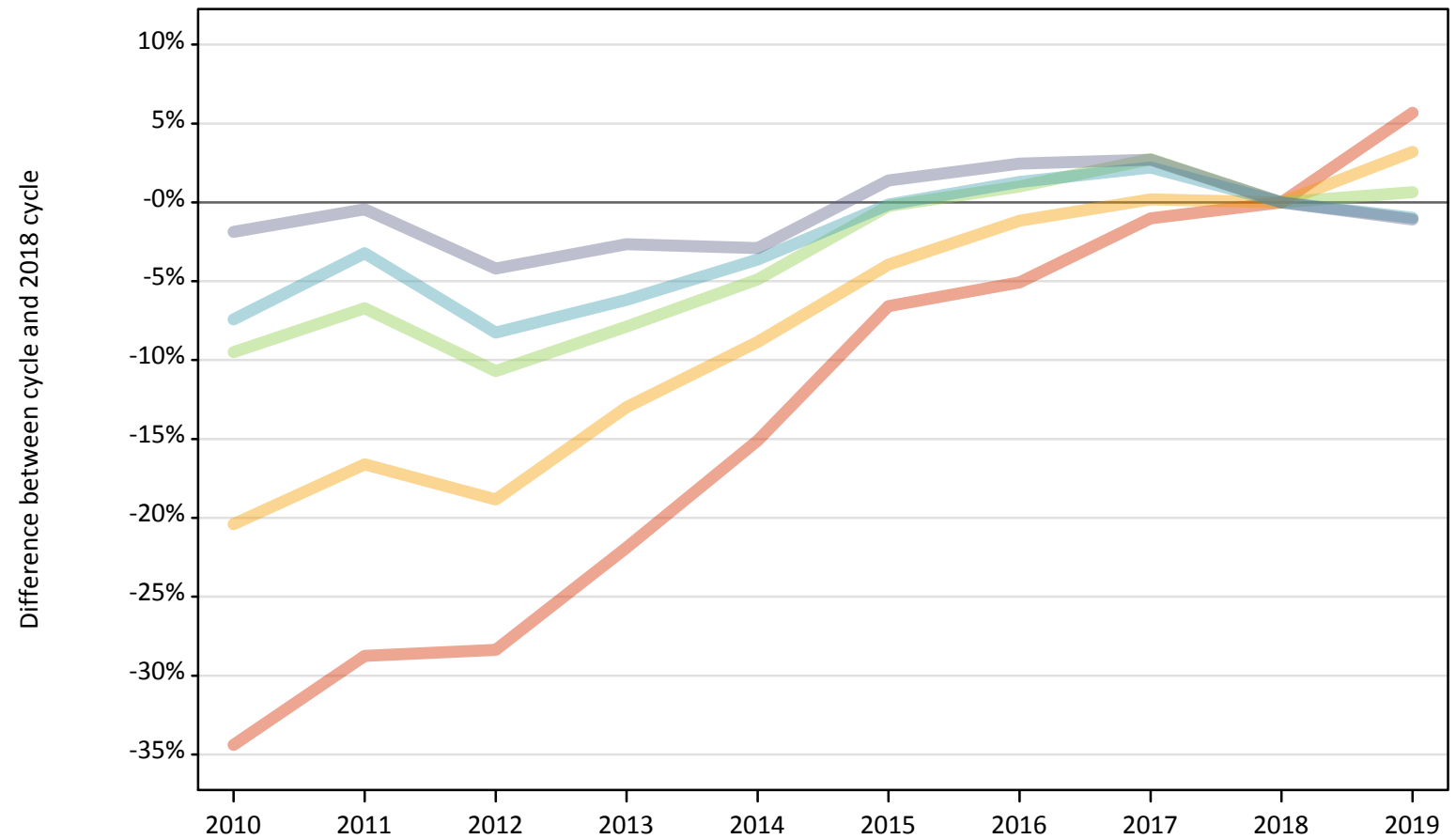
Applicant Status IMD2015		2010	2011	2012	2013	2014	2015	2016	2017	2018	2019
Placed	Quintile 1	-20%	-13%	-17%	-10%	-3%	2%	3%	2%	0%	2%
	Quintile 2	-8%	-4%	-11%	-4%	1%	3%	5%	2%	0%	1%
	Quintile 3	0%	3%	-7%	-0%	3%	6%	6%	5%	0%	-1%
	Quintile 4	2%	6%	-5%	0%	3%	6%	6%	4%	0%	-2%
	Quintile 5	6%	8%	-3%	3%	3%	6%	6%	4%	0%	-3%

Note: The percentage change is not recorded in the above table for groups with fewer than 10 placed applicants in that cycle or in the 2018 cycle.

J.4 Placed 18 year old applicants from England by IMD2015 quintile: 15 days after A level results day

Placed 18 year old applicants: change relative to 2018 cycle totals

- Quintile 1
- Quintile 2
- Quintile 3
- Quintile 4
- Quintile 5



Note: The percentage change is not plotted in the above chart for groups with fewer than 30 placed applicants in any one cycle.

J.5 Placed 18 year old applicants from England by IMD2015 quintile: 15 days after A level results day

Applicant Status IMD2015		2010	2011	2012	2013	2014	2015	2016	2017	2018	2019
Placed	Quintile 1	20,550	22,320	22,440	24,470	26,600	29,260	29,740	31,010	31,330	33,100
	Quintile 2	26,450	27,720	26,980	28,920	30,300	31,920	32,850	33,300	33,230	34,300
	Quintile 3	33,940	34,990	33,490	34,550	35,670	37,420	37,880	38,530	37,500	37,740
	Quintile 4	41,190	43,050	40,810	41,730	42,870	44,420	45,060	45,470	44,490	44,050
	Quintile 5	55,460	56,280	54,140	55,030	54,880	57,310	57,910	58,040	56,520	55,910

J.6 Placed 18 year old applicants from England by IMD2015 quintile: 15 days after A level results day

Placed 18 year old applicants: change relative to 2018 cycle totals

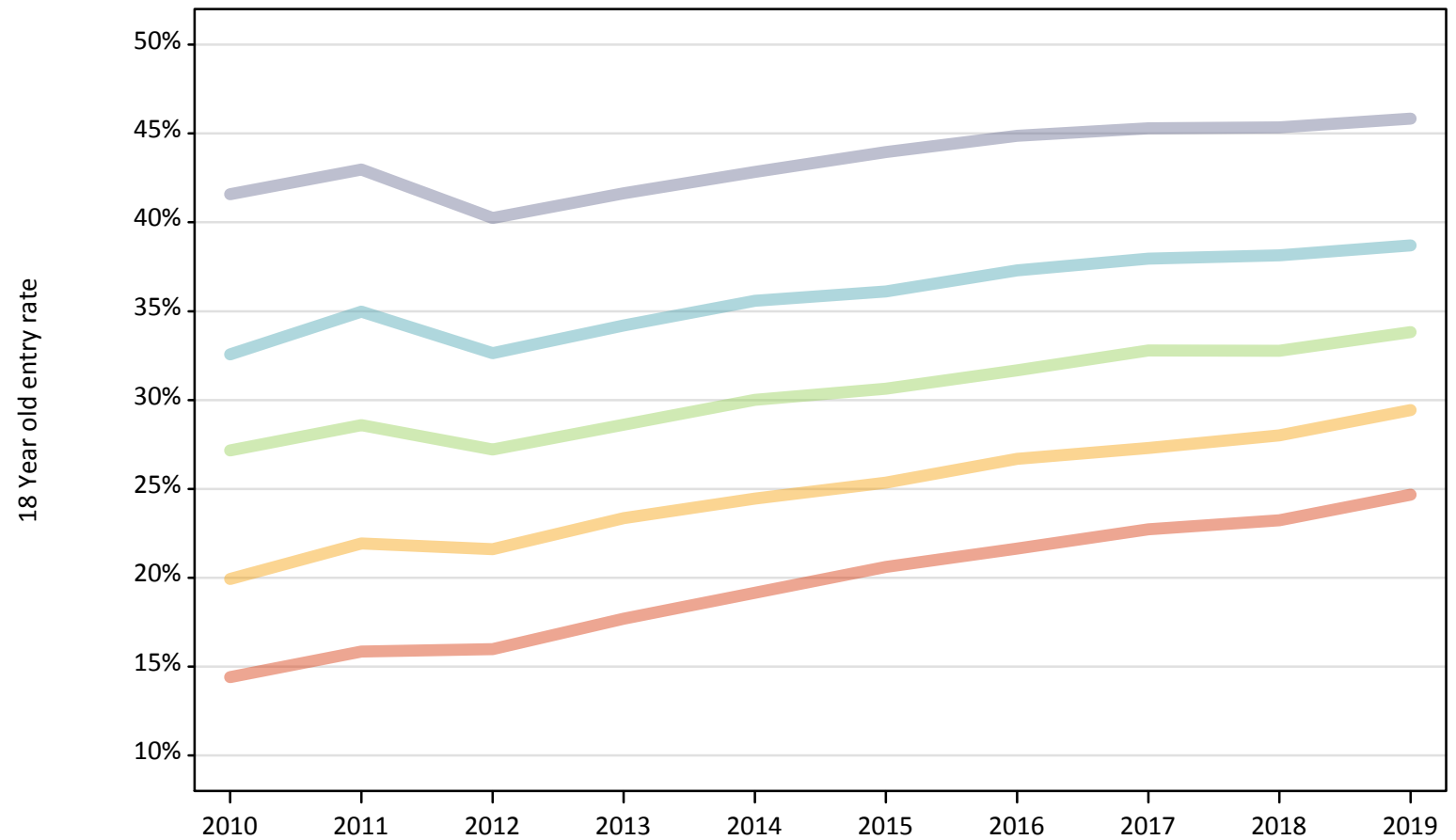
Applicant Status IMD2015		2010	2011	2012	2013	2014	2015	2016	2017	2018	2019
Placed	Quintile 1	-34%	-29%	-28%	-22%	-15%	-7%	-5%	-1%	0%	6%
	Quintile 2	-20%	-17%	-19%	-13%	-9%	-4%	-1%	0%	0%	3%
	Quintile 3	-9%	-7%	-11%	-8%	-5%	-0%	1%	3%	0%	1%
	Quintile 4	-7%	-3%	-8%	-6%	-4%	-0%	1%	2%	0%	-1%
	Quintile 5	-2%	-0%	-4%	-3%	-3%	1%	2%	3%	0%	-1%

Note: The percentage change is not recorded in the above table for groups with fewer than 10 placed applicants in that cycle or in the 2018 cycle.

J.7 Placed 18 year old applicants from England by IMD2015 quintile: 15 days after A level results day

Placed 18 year old applicants: entry rate

- Quintile 1
- Quintile 2
- Quintile 3
- Quintile 4
- Quintile 5



J.8 Placed 18 year old applicants from England by IMD2015 quintile: 15 days after A level results day

Placed 18 year old applicants: entry rate

Applicant Status	IMD2015	2010	2011	2012	2013	2014	2015	2016	2017	2018	2019
Placed	Quintile 1	14.4%	15.8%	16.0%	17.7%	19.2%	20.6%	21.6%	22.7%	23.2%	24.7%
	Quintile 2	19.9%	21.9%	21.6%	23.4%	24.5%	25.4%	26.7%	27.3%	28.0%	29.4%
	Quintile 3	27.2%	28.6%	27.2%	28.6%	30.0%	30.6%	31.7%	32.8%	32.8%	33.8%
	Quintile 4	32.6%	35.0%	32.6%	34.2%	35.6%	36.1%	37.3%	38.0%	38.1%	38.7%
	Quintile 5	41.6%	43.0%	40.2%	41.6%	42.8%	44.0%	44.9%	45.3%	45.3%	45.8%

J.9 Placed 18 year old applicants from England by IMD2015 quintile: 15 days after A level results day

Placed 18 year old applicants: entry rate (indexed to 100 = Quintile 1)

Applicant Status	IMD2015	2010	2011	2012	2013	2014	2015	2016	2017	2018	2019
Placed	Quintile 1	100	100	100	100	100	100	100	100	100	100
	Quintile 2	138	138	135	132	128	123	123	120	121	119
	Quintile 3	189	180	170	162	157	149	146	144	141	137
	Quintile 4	226	221	204	193	186	175	172	167	164	157
	Quintile 5	289	271	252	235	223	213	207	199	195	186