

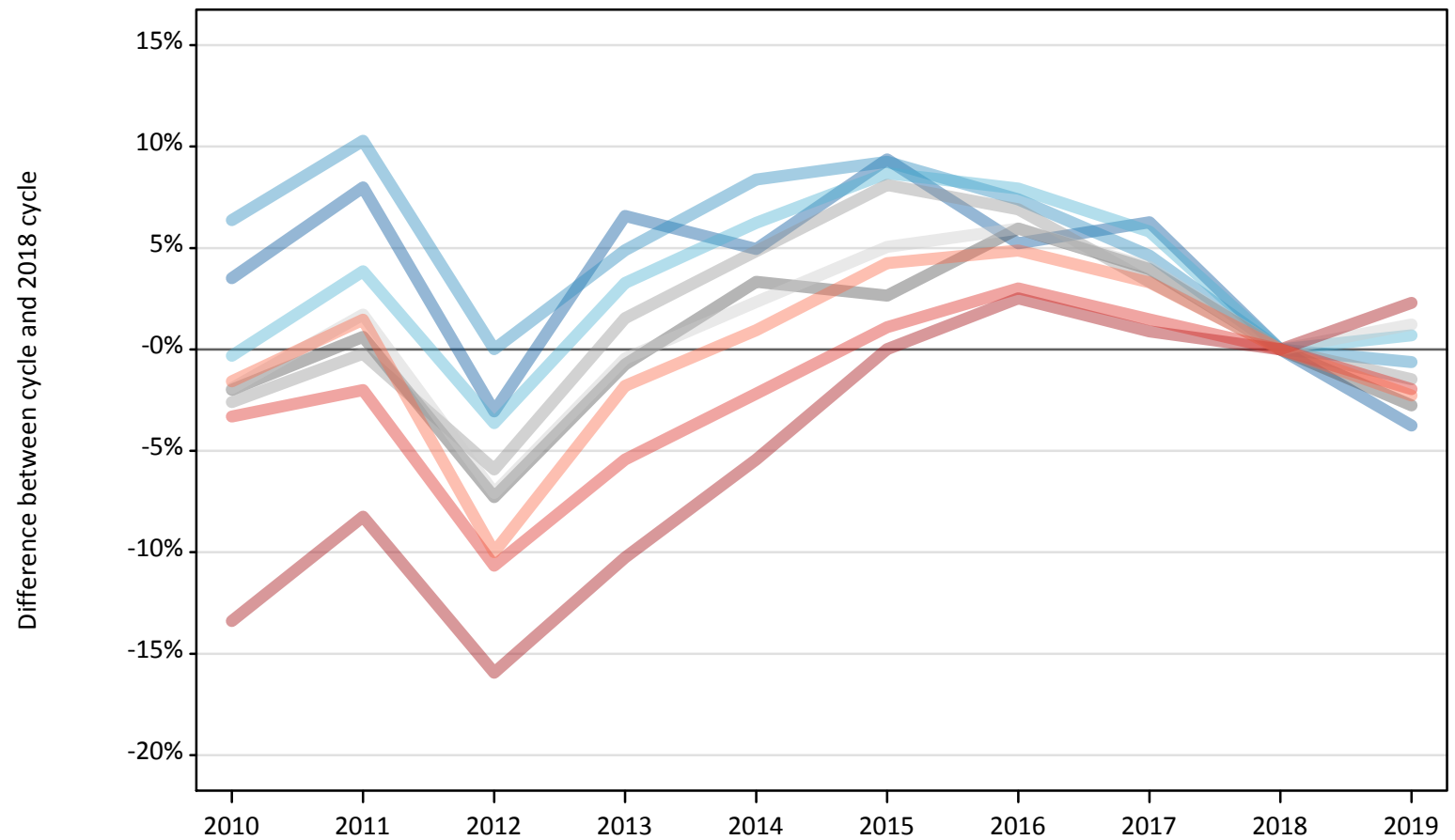
Daily Clearing Analysis: Region

Analysis at 00:05 on Friday 30 August 2019 (15 days after A level results day)

R.1 Placed applicants by region of domicile: 15 days after A level results day

Placed applicants: change relative to 2018 cycle totals

- North East
- North West
- Yorkshire and The Humber
- East Midlands
- West Midlands
- East of England
- London
- South East
- South West



Note: The percentage change is not plotted in the above chart for groups with fewer than 30 placed applicants in any one cycle.

R.2 Placed applicants by region of domicile: 15 days after A level results day

Applicant Status	Domicile	2010	2011	2012	2013	2014	2015	2016	2017	2018	2019
Placed	North East	15,110	15,760	14,150	15,560	15,320	15,960	15,360	15,510	14,590	14,050
	North West	47,390	49,140	44,560	46,730	48,290	48,680	47,850	46,620	44,550	44,280
	Yorkshire and The Humber	30,980	32,270	29,940	32,090	33,010	33,770	33,540	32,880	31,070	31,290
	East Midlands	26,450	27,150	25,020	26,790	27,890	27,710	28,600	28,050	26,990	26,240
	West Midlands	35,330	36,200	34,130	36,830	38,030	39,220	38,780	37,480	36,270	35,740
	East of England	35,280	36,590	33,420	35,810	36,810	37,790	38,120	37,430	35,970	36,410
	London	61,040	64,660	59,230	63,240	66,640	70,480	72,240	71,100	70,470	72,090
	South East	56,440	57,200	52,150	55,200	57,090	59,000	60,120	59,230	58,370	57,220
	South West	31,830	32,810	29,110	31,760	32,650	33,720	33,920	33,410	32,340	31,610
	(England total)	339,840	351,780	321,710	344,000	355,720	366,320	368,510	361,710	350,620	348,920
	Scotland	28,730	28,180	28,340	28,740	29,470	32,180	33,520	34,270	34,690	33,520
	Northern Ireland	13,500	13,630	12,980	14,270	14,270	13,940	14,720	14,250	13,890	13,540
	Wales	17,410	17,280	17,840	18,040	18,820	19,210	19,370	18,910	18,480	18,170
	UK	399,480	410,860	380,870	405,050	418,280	431,640	436,130	429,140	417,680	414,140

R.3 Placed applicants by region of domicile: 15 days after A level results day

Placed applicants: change relative to 2018 cycle totals

Applicant Status	Domicile	2010	2011	2012	2013	2014	2015	2016	2017	2018	2019
Placed	North East	4%	8%	-3%	7%	5%	9%	5%	6%	0%	-4%
	North West	6%	10%	0%	5%	8%	9%	7%	5%	0%	-1%
	Yorkshire and The Humber	-0%	4%	-4%	3%	6%	9%	8%	6%	0%	1%
	East Midlands	-2%	1%	-7%	-1%	3%	3%	6%	4%	0%	-3%
	West Midlands	-3%	-0%	-6%	2%	5%	8%	7%	3%	0%	-1%
	East of England	-2%	2%	-7%	-0%	2%	5%	6%	4%	0%	1%
	London	-13%	-8%	-16%	-10%	-5%	0%	3%	1%	0%	2%
	South East	-3%	-2%	-11%	-5%	-2%	1%	3%	1%	0%	-2%
	South West	-2%	1%	-10%	-2%	1%	4%	5%	3%	0%	-2%
	(England total)	-3%	0%	-8%	-2%	1%	4%	5%	3%	0%	-0%
	Scotland	-17%	-19%	-18%	-17%	-15%	-7%	-3%	-1%	0%	-3%
	Northern Ireland	-3%	-2%	-7%	3%	3%	0%	6%	3%	0%	-2%
	Wales	-6%	-6%	-3%	-2%	2%	4%	5%	2%	0%	-2%
	UK	-4%	-2%	-9%	-3%	0%	3%	4%	3%	0%	-1%

Note: The percentage change is not recorded in the above table for groups with fewer than 10 placed applicants in that cycle or in the 2018 cycle.

R.4 Placed applicants by region of domicile: 15 days after A level results day

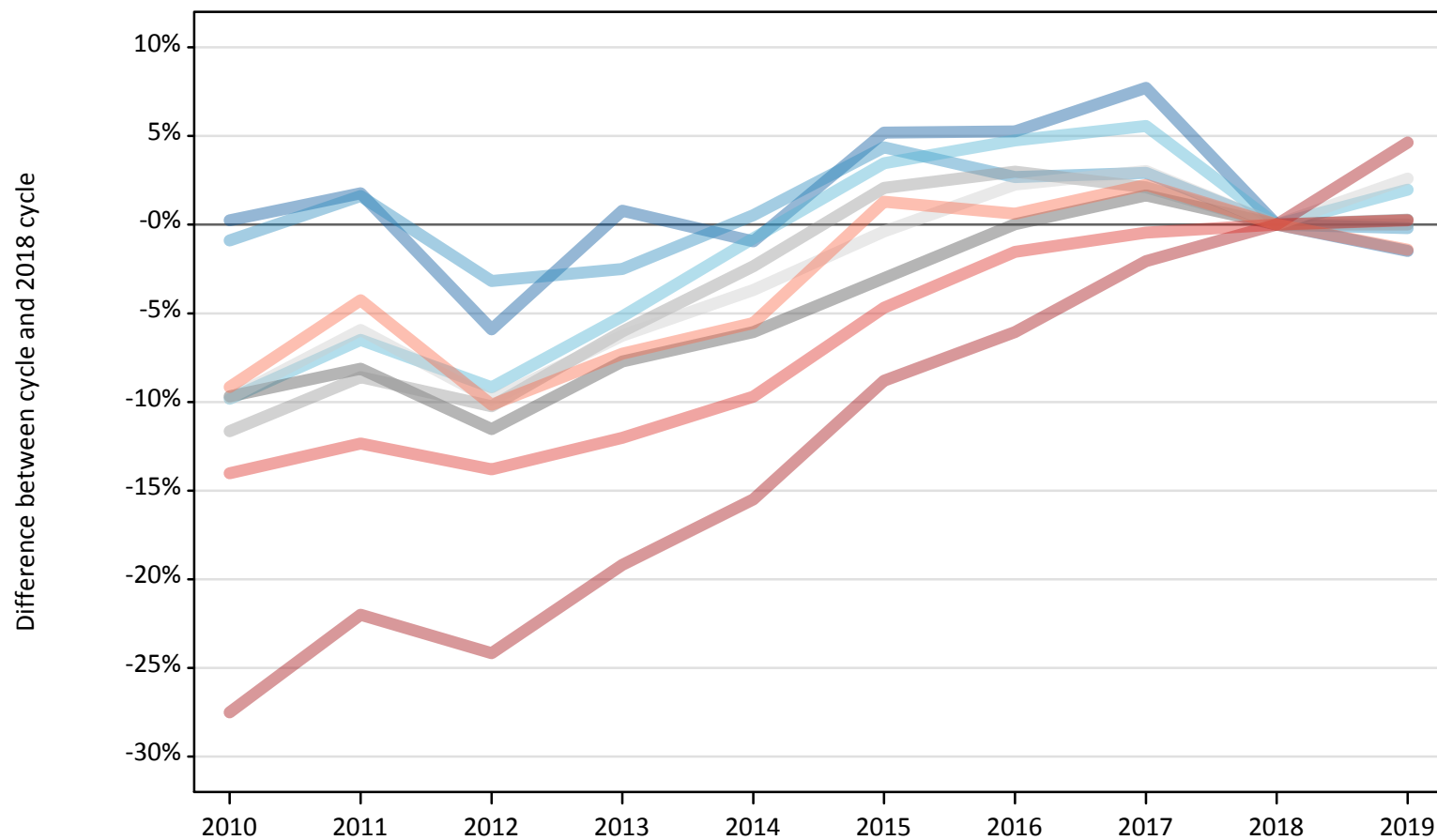
Placed applicants: absolute change relative to 2018 cycle totals

Applicant Status	Domicile	2010	2011	2012	2013	2014	2015	2016	2017	2018	2019
Placed	North East	510	1,170	-450	960	720	1,370	760	920	0	-550
	North West	2,840	4,580	10	2,180	3,730	4,120	3,290	2,060	0	-280
	Yorkshire and The Humber	-100	1,200	-1,130	1,020	1,940	2,700	2,460	1,810	0	220
	East Midlands	-540	170	-1,960	-200	900	720	1,610	1,070	0	-740
	West Midlands	-940	-80	-2,150	560	1,760	2,940	2,500	1,210	0	-540
	East of England	-690	620	-2,550	-160	840	1,820	2,150	1,460	0	440
	London	-9,430	-5,810	-11,230	-7,230	-3,830	20	1,770	630	0	1,620
	South East	-1,930	-1,170	-6,220	-3,170	-1,270	640	1,760	870	0	-1,140
	South West	-510	480	-3,230	-580	310	1,380	1,580	1,070	0	-730
	(England total)	-10,780	1,160	-28,910	-6,620	5,100	15,700	17,890	11,090	0	-1,700
	Scotland	-5,960	-6,510	-6,350	-5,950	-5,220	-2,510	-1,170	-420	0	-1,180
	Northern Ireland	-390	-260	-910	390	380	50	830	360	0	-350
	Wales	-1,070	-1,200	-640	-440	340	730	900	430	0	-310
	UK	-18,190	-6,810	-36,810	-12,630	600	13,970	18,450	11,460	0	-3,530

R.5 Placed 18 year old applicants by region of domicile: 15 days after A level results day

Placed 18 year old applicants: change relative to 2018 cycle totals

- North East
- North West
- Yorkshire and The Humber
- East Midlands
- West Midlands
- East of England
- London
- South East
- South West



Note: The percentage change is not plotted in the above chart for groups with fewer than 30 placed applicants in any one cycle.

R.6 Placed 18 year old applicants by region of domicile: 15 days after A level results day

Applicant Status	Domicile	2010	2011	2012	2013	2014	2015	2016	2017	2018	2019
Placed	North East	8,080	8,200	7,580	8,120	7,980	8,470	8,480	8,680	8,060	7,940
	North West	25,900	26,550	25,300	25,480	26,270	27,270	26,840	26,900	26,130	26,080
	Yorkshire and The Humber	16,460	17,070	16,580	17,310	18,120	18,890	19,120	19,270	18,260	18,610
	East Midlands	14,520	14,770	14,220	14,840	15,100	15,590	16,080	16,340	16,080	16,120
	West Midlands	18,390	19,020	18,680	19,560	20,320	21,250	21,430	21,250	20,810	20,820
	East of England	20,150	21,010	20,130	20,940	21,510	22,250	22,840	23,010	22,330	22,910
	London	28,200	30,340	29,490	31,430	32,870	35,470	36,540	38,090	38,890	40,690
	South East	30,610	31,210	30,690	31,330	32,150	33,940	35,060	35,450	35,610	35,690
	South West	15,650	16,500	15,480	15,980	16,280	17,460	17,340	17,620	17,230	16,990
	(England total)	177,960	184,660	178,170	184,970	190,600	200,590	203,730	206,610	203,400	205,860
	Scotland	14,780	14,020	14,130	14,170	14,330	14,420	14,640	14,660	14,610	14,050
	Northern Ireland	8,850	8,600	8,350	8,780	8,560	8,450	8,590	8,480	8,190	7,970
	Wales	9,800	9,430	9,730	9,680	10,070	10,510	10,620	10,290	10,130	9,900
	UK	211,380	216,710	210,380	217,590	223,560	233,960	237,570	240,030	236,330	237,770

R.7 Placed 18 year old applicants by region of domicile: 15 days after A level results day

Placed 18 year old applicants: change relative to 2018 cycle totals

Applicant Status	Domicile	2010	2011	2012	2013	2014	2015	2016	2017	2018	2019
Placed	North East	0%	2%	-6%	1%	-1%	5%	5%	8%	0%	-1%
	North West	-1%	2%	-3%	-3%	1%	4%	3%	3%	0%	-0%
	Yorkshire and The Humber	-10%	-7%	-9%	-5%	-1%	3%	5%	6%	0%	2%
	East Midlands	-10%	-8%	-12%	-8%	-6%	-3%	0%	2%	0%	0%
	West Midlands	-12%	-9%	-10%	-6%	-2%	2%	3%	2%	0%	0%
	East of England	-10%	-6%	-10%	-6%	-4%	-0%	2%	3%	0%	3%
	London	-28%	-22%	-24%	-19%	-15%	-9%	-6%	-2%	0%	5%
	South East	-14%	-12%	-14%	-12%	-10%	-5%	-2%	-0%	0%	0%
	South West	-9%	-4%	-10%	-7%	-6%	1%	1%	2%	0%	-1%
	(England total)	-13%	-9%	-12%	-9%	-6%	-1%	0%	2%	0%	1%
	Scotland	1%	-4%	-3%	-3%	-2%	-1%	0%	0%	0%	-4%
	Northern Ireland	8%	5%	2%	7%	5%	3%	5%	3%	0%	-3%
	Wales	-3%	-7%	-4%	-4%	-1%	4%	5%	2%	0%	-2%
	UK	-11%	-8%	-11%	-8%	-5%	-1%	1%	2%	0%	1%

Note: The percentage change is not recorded in the above table for groups with fewer than 10 placed applicants in that cycle or in the 2018 cycle.

R.8 Placed 18 year old applicants by region of domicile: 15 days after A level results day

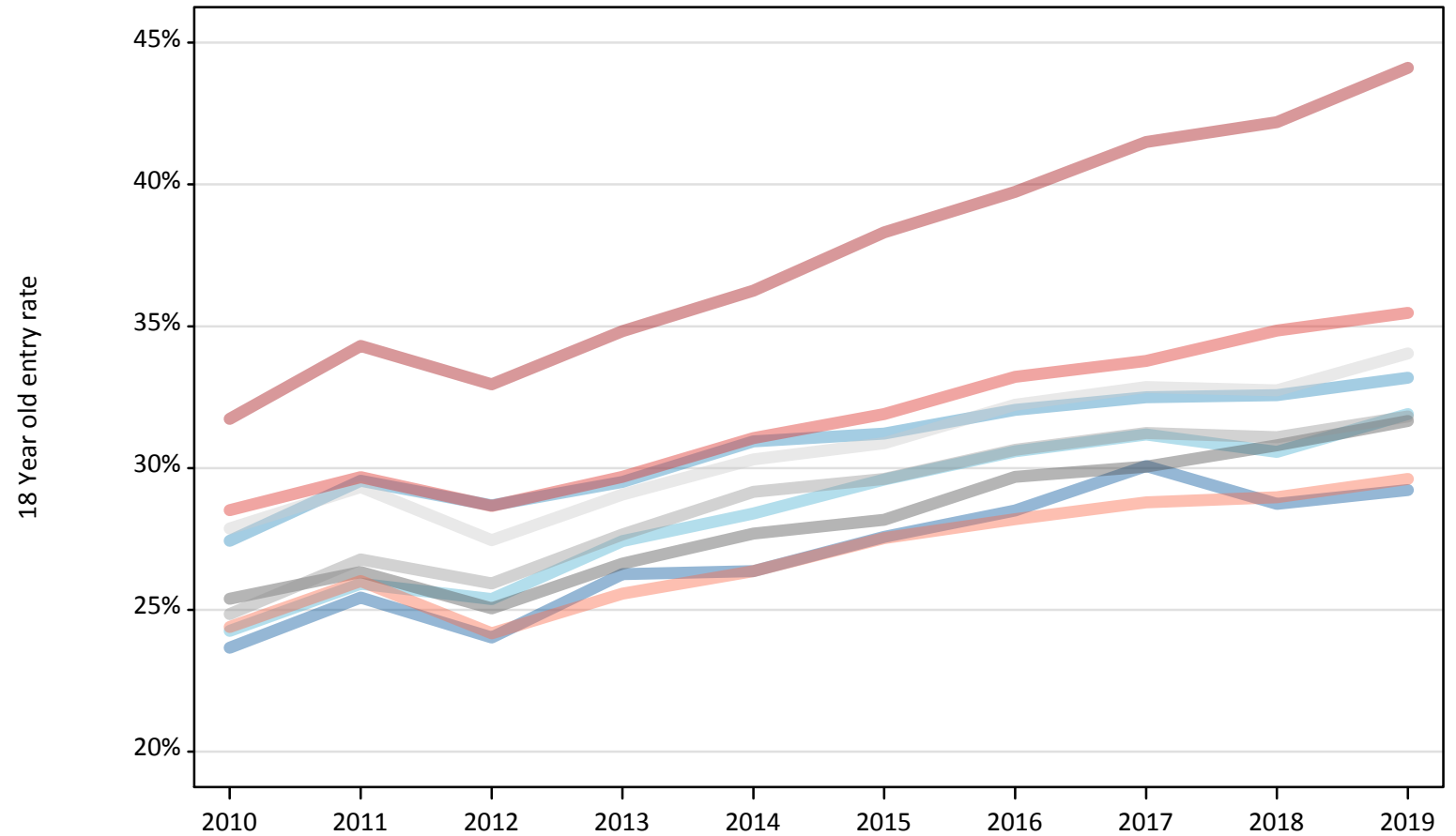
Placed 18 year old applicants: absolute change relative to 2018 cycle totals

Applicant Status	Domicile	2010	2011	2012	2013	2014	2015	2016	2017	2018	2019
Placed	North East	20	140	-480	60	-80	420	420	620	0	-120
	North West	-230	420	-830	-650	140	1,140	700	760	0	-50
	Yorkshire and The Humber	-1,790	-1,190	-1,680	-950	-140	630	870	1,020	0	360
	East Midlands	-1,560	-1,310	-1,850	-1,240	-970	-480	0	270	0	40
	West Midlands	-2,430	-1,790	-2,130	-1,260	-490	430	620	440	0	0
	East of England	-2,190	-1,330	-2,200	-1,400	-820	-90	510	680	0	580
	London	-10,700	-8,560	-9,400	-7,470	-6,030	-3,420	-2,360	-800	0	1,800
	South East	-4,990	-4,400	-4,910	-4,280	-3,460	-1,670	-550	-160	0	90
	South West	-1,580	-740	-1,750	-1,260	-960	220	110	390	0	-240
	(England total)	-25,440	-18,740	-25,230	-18,430	-12,800	-2,810	330	3,210	0	2,460
	Scotland	170	-600	-480	-450	-280	-200	20	40	0	-570
	Northern Ireland	660	410	150	590	370	250	400	290	0	-230
	Wales	-330	-700	-390	-450	-60	390	490	160	0	-220
	UK	-24,950	-19,630	-25,950	-18,740	-12,770	-2,370	1,230	3,700	0	1,440

R.9 Placed 18 year old applicants by region of domicile: 15 days after A level results day

Placed 18 year old applicants: entry rate

- North East
- North West
- Yorkshire and The Humber
- East Midlands
- West Midlands
- East of England
- London
- South East
- South West



R.10 Placed 18 year old applicants by region of domicile: 15 days after A level results day

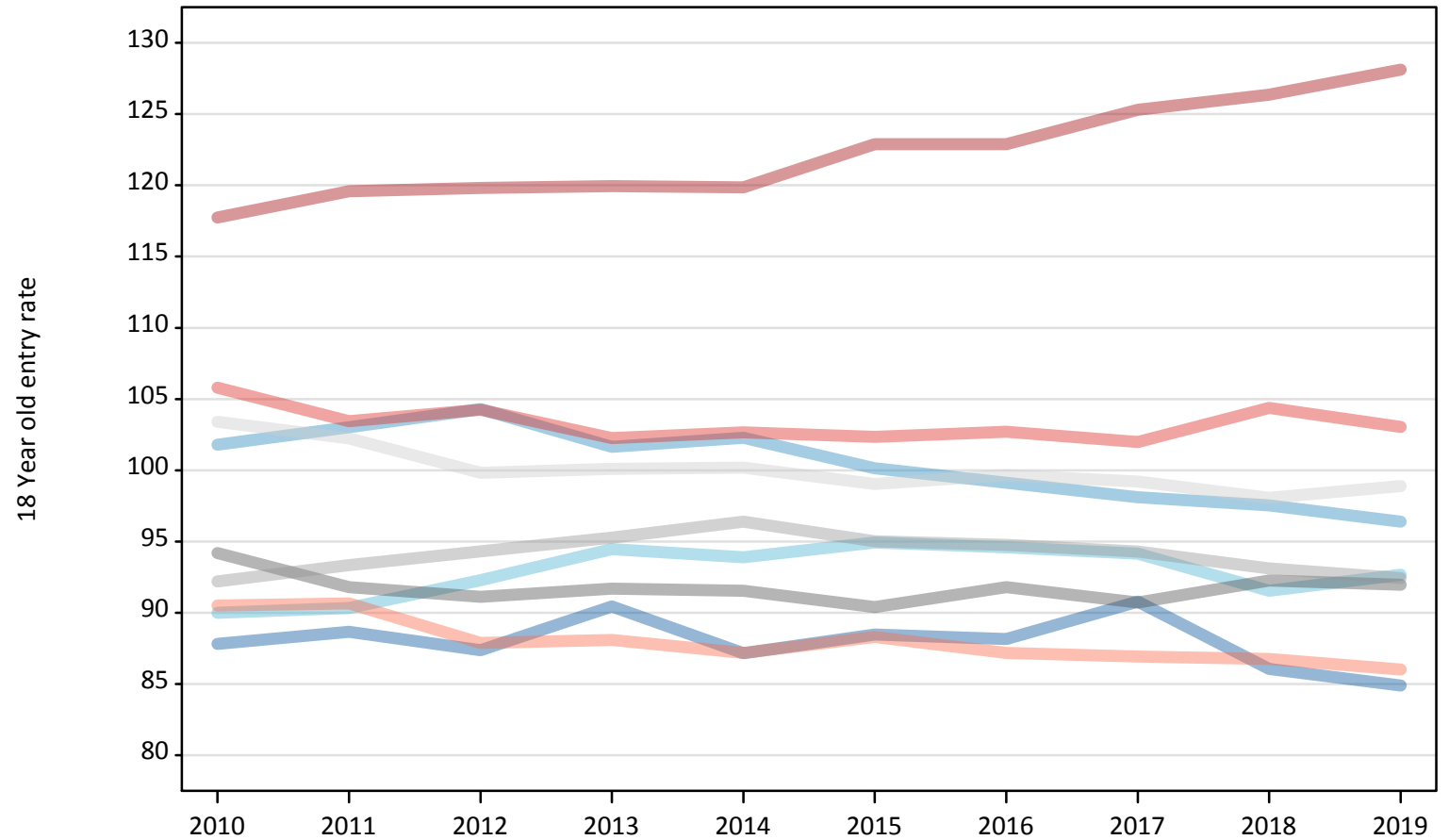
Placed 18 year old applicants: entry rate

Applicant Status	Domicile	2010	2011	2012	2013	2014	2015	2016	2017	2018	2019
Placed	North East	23.7%	25.4%	24.0%	26.3%	26.4%	27.6%	28.5%	30.1%	28.7%	29.2%
	North West	27.4%	29.6%	28.7%	29.5%	30.9%	31.2%	32.1%	32.5%	32.6%	33.2%
	Yorkshire and The Humber	24.3%	25.9%	25.4%	27.4%	28.4%	29.6%	30.6%	31.2%	30.6%	31.9%
	East Midlands	25.4%	26.3%	25.1%	26.6%	27.7%	28.2%	29.7%	30.0%	30.8%	31.7%
	West Midlands	24.8%	26.8%	25.9%	27.7%	29.2%	29.6%	30.6%	31.2%	31.1%	31.8%
	East of England	27.9%	29.3%	27.5%	29.1%	30.3%	30.9%	32.2%	32.9%	32.7%	34.0%
	London	31.7%	34.3%	33.0%	34.8%	36.3%	38.3%	39.7%	41.5%	42.2%	44.1%
	South East	28.5%	29.7%	28.7%	29.7%	31.1%	31.9%	33.2%	33.8%	34.9%	35.5%
	South West	24.4%	26.0%	24.2%	25.6%	26.4%	27.5%	28.2%	28.8%	29.0%	29.6%
	(England total)	27.0%	28.7%	27.5%	29.0%	30.2%	31.2%	32.3%	33.1%	33.4%	34.4%
	Scotland	23.1%	22.3%	22.8%	23.0%	23.4%	24.0%	24.9%	25.6%	26.3%	26.1%
	Northern Ireland	34.7%	34.4%	33.2%	35.8%	35.3%	34.0%	35.1%	35.0%	35.3%	35.6%
	Wales	24.6%	24.4%	25.2%	25.6%	26.9%	27.9%	29.2%	29.0%	29.4%	29.5%
	UK	26.8%	28.1%	27.2%	28.6%	29.7%	30.5%	31.7%	32.4%	32.7%	33.6%

R.11 Placed 18 year old applicants by region of domicile: 15 days after A level results day

Placed 18 year old applicants: entry rates (indexed to 100 = England)

- North East
- North West
- Yorkshire and The Humber
- East Midlands
- West Midlands
- East of England
- London
- South East
- South West



R.12 Placed 18 year old applicants by region of domicile: 15 days after A level results day

Placed 18 year old applicants: entry rate (indexed to 100 = England)

Applicant Status	Domicile	2010	2011	2012	2013	2014	2015	2016	2017	2018	2019
Placed	North East	88	89	87	90	87	88	88	91	86	85
	North West	102	103	104	102	102	100	99	98	98	96
	Yorkshire and The Humber	90	90	92	94	94	95	95	94	92	93
	East Midlands	94	92	91	92	92	90	92	91	92	92
	West Midlands	92	93	94	95	96	95	95	94	93	92
	East of England	103	102	100	100	100	99	100	99	98	99
	London	118	120	120	120	120	123	123	125	126	128
	South East	106	103	104	102	103	102	103	102	104	103
	South West	91	91	88	88	87	88	87	87	87	86
	(England total)	100	100	100	100	100	100	100	100	100	100