

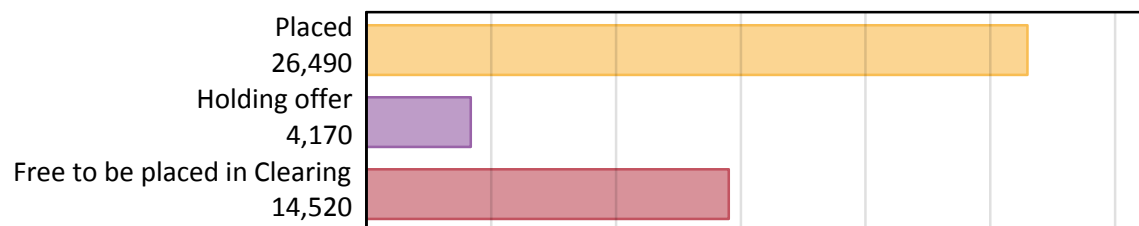
Daily Clearing Analysis: Overview

B7 Nursing analysis at 00:05 on Friday 30 August 2019 (15 days after A level results day)

AB.1 Placed applicants to nursing from all domiciles, 2019 cycle

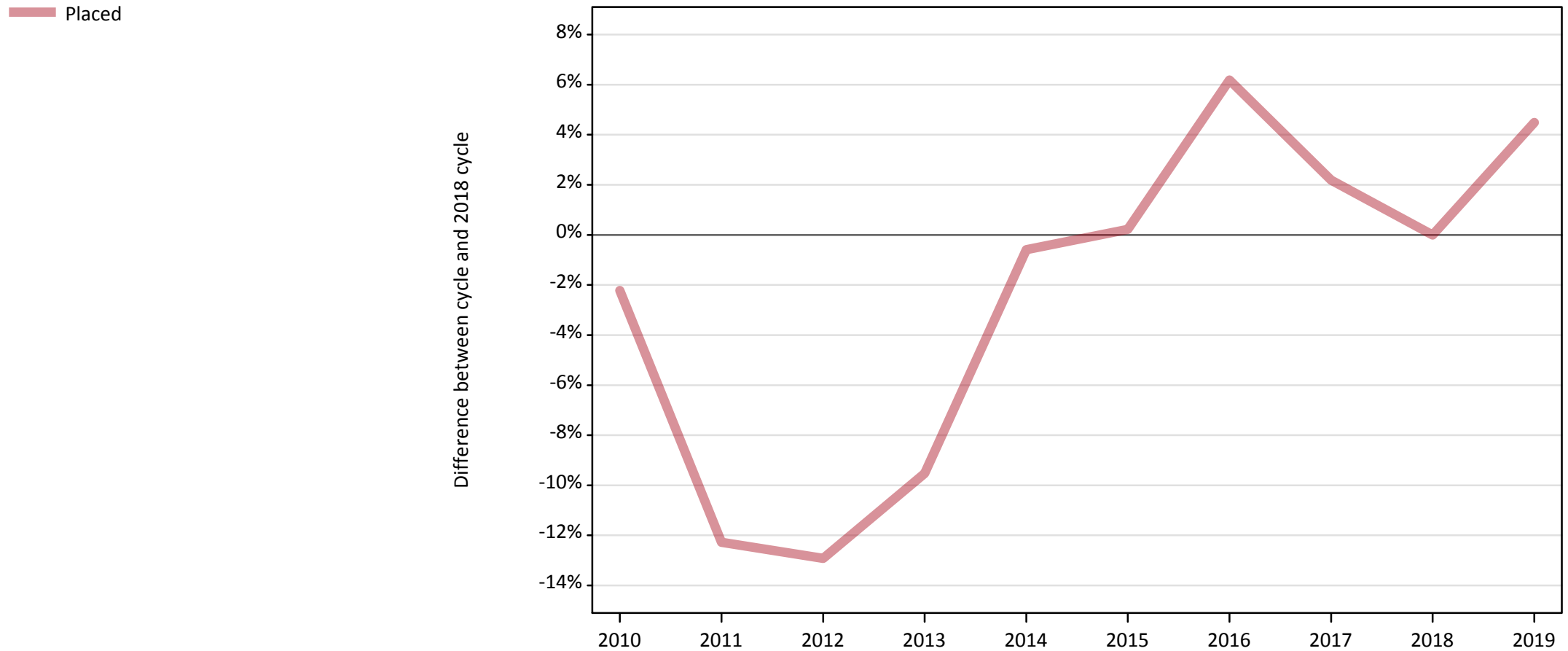
Applicant type	Status	2019
Main scheme	Placed (Clearing)	1,540
	Placed (Adjustment)	10
	Placed (Firm)	22,660
	Placed (Insurance)	560
	Placed (Other)	1,210
	Holding offer	4,170
	Free to be placed in Clearing	14,520
Direct to Clearing	Placed (Direct to Clearing)	510
	Other (Direct to Clearing)	490
All applicants	Placed	26,490

AB.2 Summary of nursing applicants who are placed, holding offers or free to be placed in Clearing (all domiciles)



AB.3 Placed applicants to nursing from all domiciles: 15 days after A level results day

Placed applicants to nursing: difference between cycle and 2018 cycle



Note: The percentage change is not plotted in the above chart for groups with fewer than 30 placed applicants in any one cycle.

AB.4 Placed applicants to nursing from all domiciles: 15 days after A level results day

Placed applicants to nursing: applicants at 15 days after A level results day

Applicant type	Status	2010	2011	2012	2013	2014	2015	2016	2017	2018	2019
All applicants	Placed	24,790	22,240	22,070	22,940	25,200	25,400	26,920	25,900	25,350	26,490

AB.5 Placed applicants to nursing from all domiciles: 15 days after A level results day

Placed applicants to nursing: difference between cycle and 2018 cycle

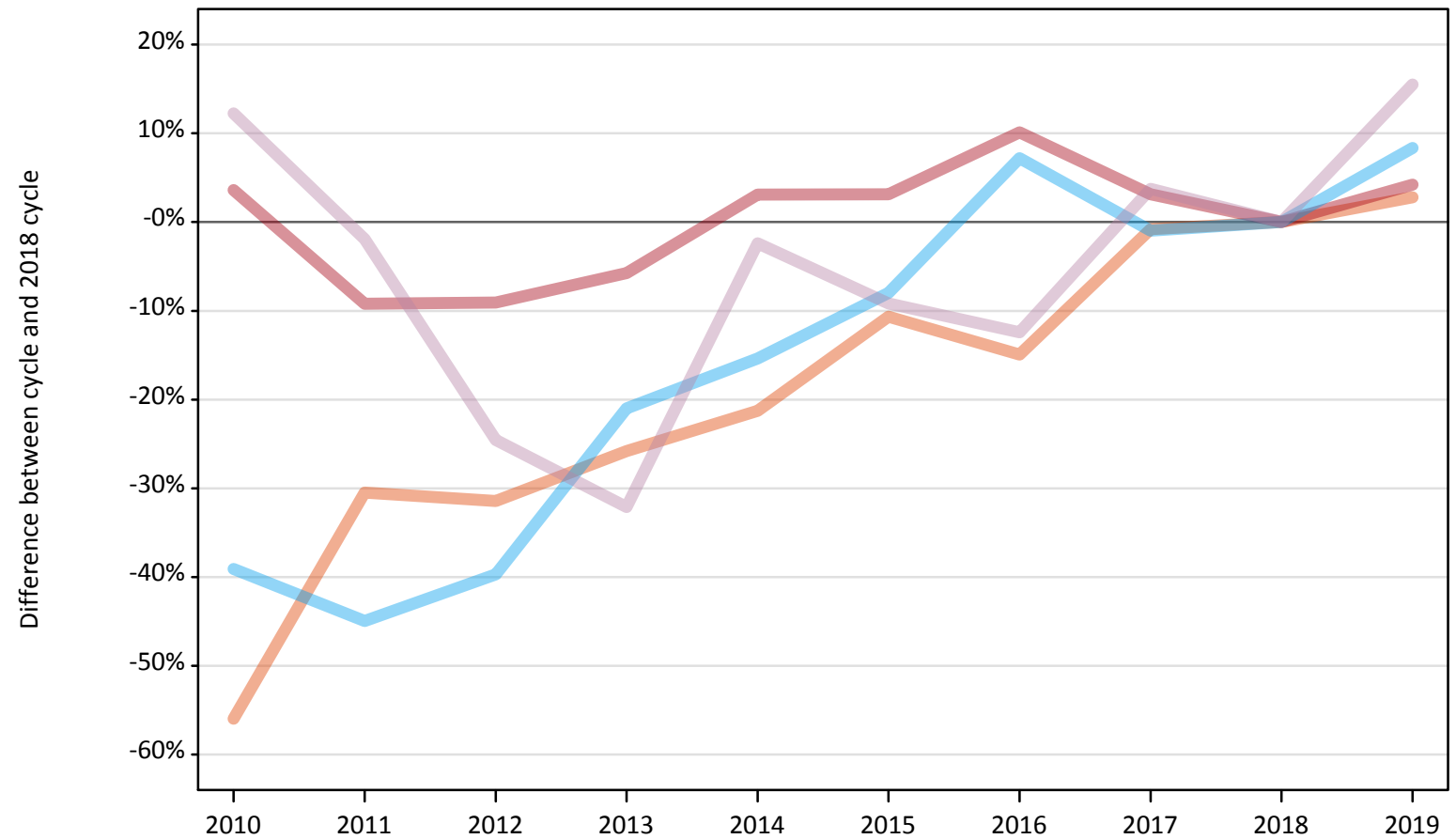
Applicant type	Status	2010	2011	2012	2013	2014	2015	2016	2017	2018	2019
All applicants	Placed	-2%	-12%	-13%	-10%	-1%	0%	6%	2%	0%	4%

Note: The percentage change is not recorded in the above table for groups with fewer than 10 placed applicants in that cycle or in the 2018 cycle.

AB.6 Placed main scheme applicants to nursing from all domiciles: 15 days after A level results day

All Main scheme placed routes (excluding Adjustment): difference between cycle and 2018 cycle

- Placed (Clearing)
- Placed (Firm)
- Placed (Insurance)
- Placed (Other)



Note: The percentage change is not plotted in the above chart for groups with fewer than 30 placed applicants in any one cycle.

AB.7 Placed main scheme applicants to nursing from all domiciles: 15 days after A level results day

All Main scheme placed routes (excluding Adjustment): applicants at 15 days after A level results day

Applicant type	Status	2010	2011	2012	2013	2014	2015	2016	2017	2018	2019
Main scheme	Placed (Clearing)	660	1,040	1,030	1,110	1,180	1,340	1,280	1,490	1,500	1,540
	Placed (Firm)	22,530	19,740	19,770	20,500	22,420	22,420	23,940	22,430	21,740	22,660
	Placed (Insurance)	310	280	310	410	440	470	550	510	510	560
	Placed (Other)	1,170	1,030	790	710	1,020	950	920	1,090	1,050	1,210

AB.8 Placed main scheme applicants to nursing from all domiciles: 15 days after A level results day

All Main scheme placed routes (excluding Adjustment): difference between cycle and 2018 cycle

Applicant type	Status	2010	2011	2012	2013	2014	2015	2016	2017	2018	2019
Main scheme	Placed (Clearing)	-56%	-30%	-31%	-26%	-21%	-11%	-15%	-1%	0%	3%
	Placed (Firm)	4%	-9%	-9%	-6%	3%	3%	10%	3%	0%	4%
	Placed (Insurance)	-39%	-45%	-40%	-21%	-15%	-8%	7%	-1%	0%	8%
	Placed (Other)	12%	-2%	-25%	-32%	-2%	-9%	-12%	4%	0%	15%

Note: The percentage change is not recorded in the above table for groups with fewer than 10 placed applicants in that cycle or in the 2018 cycle.

AB.9 Main scheme applicants placed to nursing through adjustment: 15 days after A level results day

Placed through adjustment: difference between cycle and 2018 cycle

[This chart is not part of this report]

AB.10 Main scheme applicants placed to nursing through adjustment: 15 days after A level results day

Placed through adjustment: applicants at 15 days after A level results day

Applicant type	Status	2010	2011	2012	2013	2014	2015	2016	2017	2018	2019
Main scheme	Placed (Adjustment)	0	0	0	10	10	10	0	20	10	10

AB.11 Main scheme applicants placed to nursing through adjustment: 15 days after A level results day

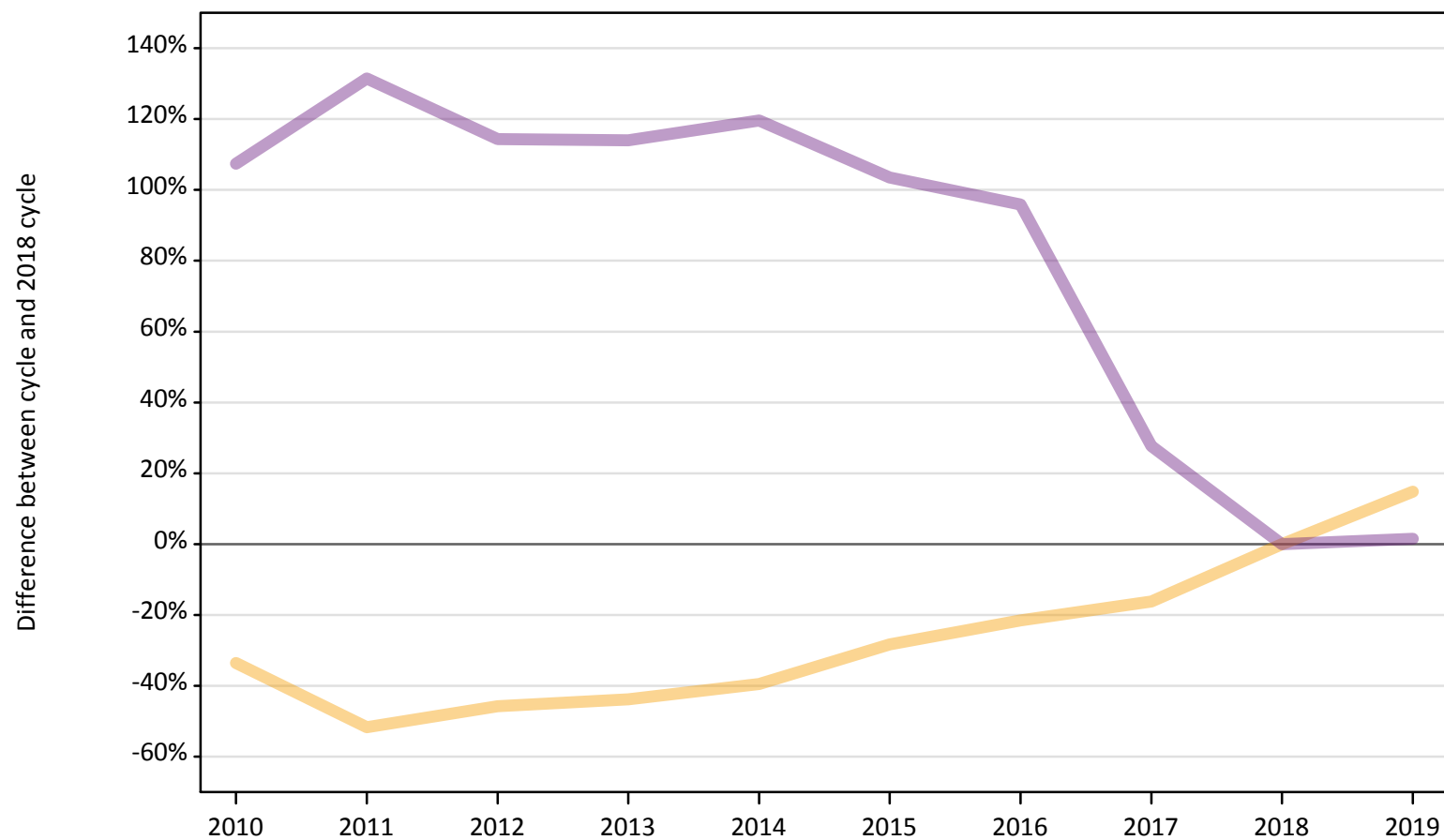
Placed through adjustment: difference between cycle and 2018 cycle

[This table is not part of this report]

AB.12 Main scheme applicants to nursing not currently placed from all domiciles: 15 days after A level results day

Applicants in unplaced states: difference between cycle and 2018 cycle

— Holding offer
— Free to be placed in Clearing



Note: The percentage change is not plotted in the above chart for groups with fewer than 30 unplaced applicants in any one cycle.

AB.13 Main scheme applicants to nursing not currently placed from all domiciles: 15 days after A level results day

Applicants in unplaced states: applicants at 15 days after A level results day

Applicant type	Status	2010	2011	2012	2013	2014	2015	2016	2017	2018	2019
Main scheme	Holding offer	2,410	1,760	1,970	2,040	2,200	2,600	2,850	3,040	3,630	4,170
	Free to be placed in Clearing	29,670	33,120	30,670	30,620	31,420	29,110	28,030	18,270	14,310	14,520

AB.14 Main scheme applicants to nursing not currently placed from all domiciles: 15 days after A level results day

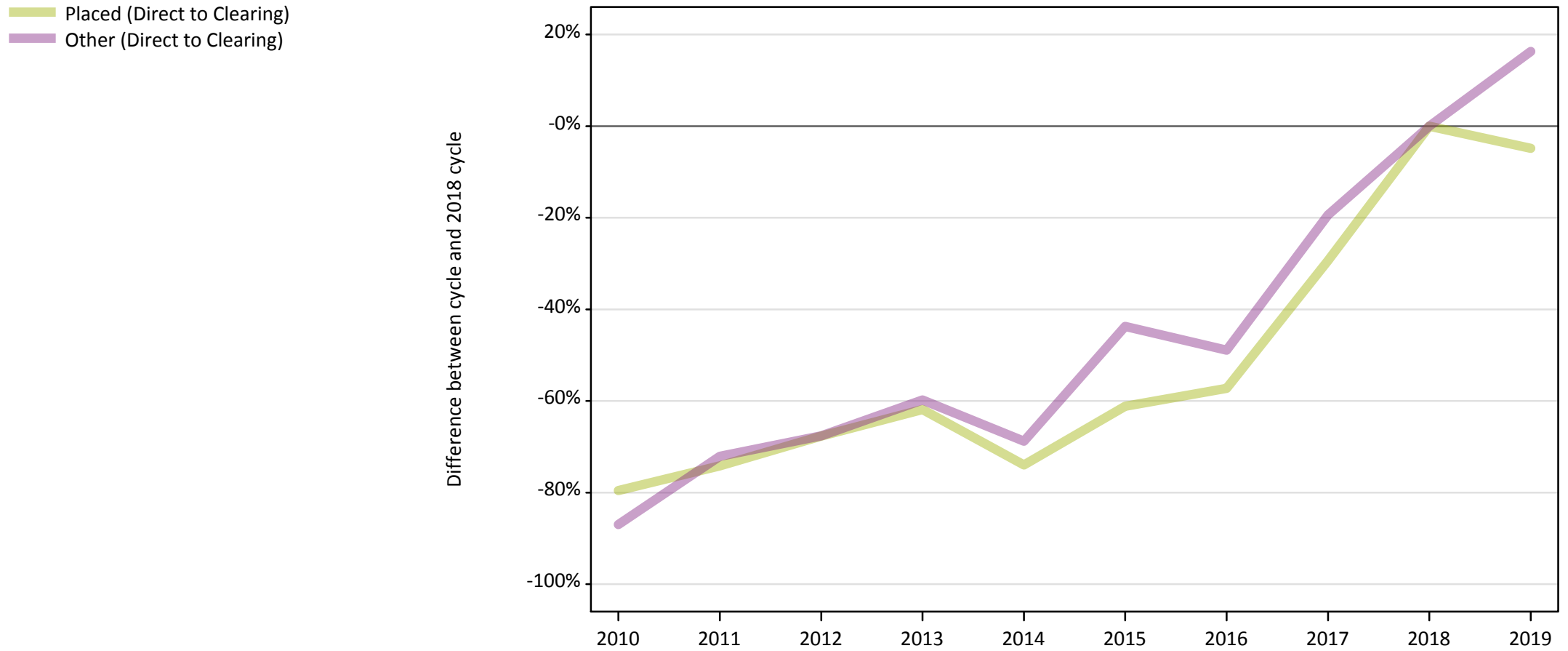
Applicants in unplaced states: difference between cycle and 2018 cycle

Applicant type	Status	2010	2011	2012	2013	2014	2015	2016	2017	2018	2019
Main scheme	Holding offer	-34%	-52%	-46%	-44%	-40%	-28%	-22%	-16%	0%	15%
	Free to be placed in Clearing	107%	131%	114%	114%	120%	103%	96%	28%	0%	1%

Note: The percentage change is not recorded in the above table for groups with fewer than 10 unplaced applicants in that cycle or in the 2018 cycle.

AB.15 Direct to Clearing applicants from all domiciles: 15 days after A level results day

Direct to Clearing: difference between cycle and 2018 cycle



Note: The percentage change is not plotted in the above chart for groups with fewer than 30 placed applicants in any one cycle.

AB.16 Direct to Clearing applicants from all domiciles: 15 days after A level results day

Direct to Clearing 15 days after A level results day

Applicant type	Status	2010	2011	2012	2013	2014	2015	2016	2017	2018	2019
Direct to Clearing	Placed (Direct to Clearing)	110	140	170	210	140	210	230	380	540	510
	Other (Direct to Clearing)	60	120	140	170	130	240	220	340	420	490

AB.17 Direct to Clearing applicants from all domiciles: 15 days after A level results day

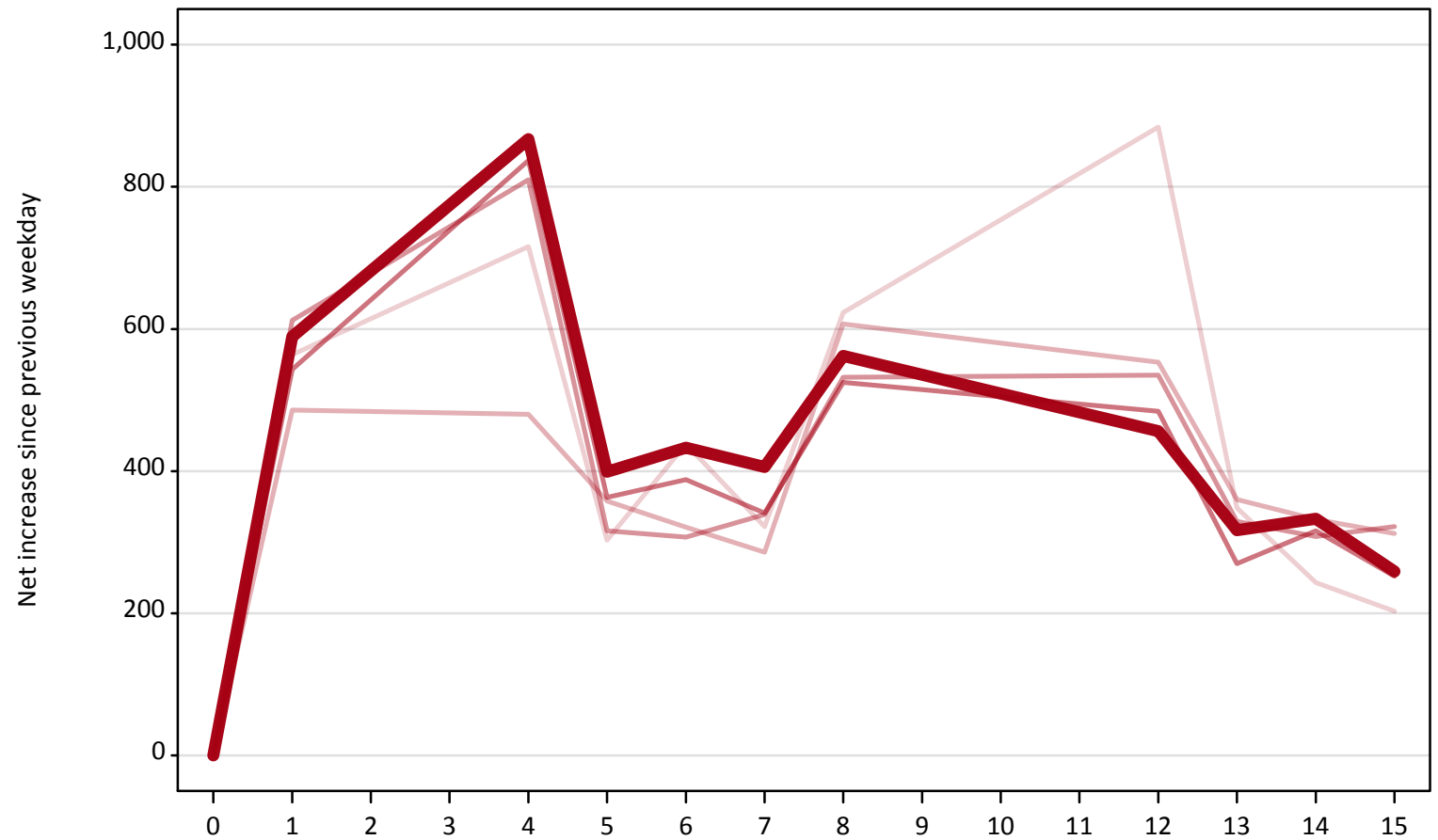
Direct to Clearing: difference between cycle and 2018 cycle

Applicant type	Status	2010	2011	2012	2013	2014	2015	2016	2017	2018	2019
Direct to Clearing	Placed (Direct to Clearing)	-80%	-74%	-68%	-62%	-74%	-61%	-57%	-29%	0%	-5%
	Other (Direct to Clearing)	-87%	-72%	-68%	-60%	-69%	-44%	-49%	-19%	0%	16%

Note: The percentage change is not recorded in the above table for groups with fewer than 10 placed applicants in that cycle or in the 2018 cycle.

AB.18 All Placed: Daily net change (from all domiciles)
Net increase since previous weekday (2019 cycle up to 15 days after A level results day)

- 2015
- 2016
- 2017
- 2018
- 2019**



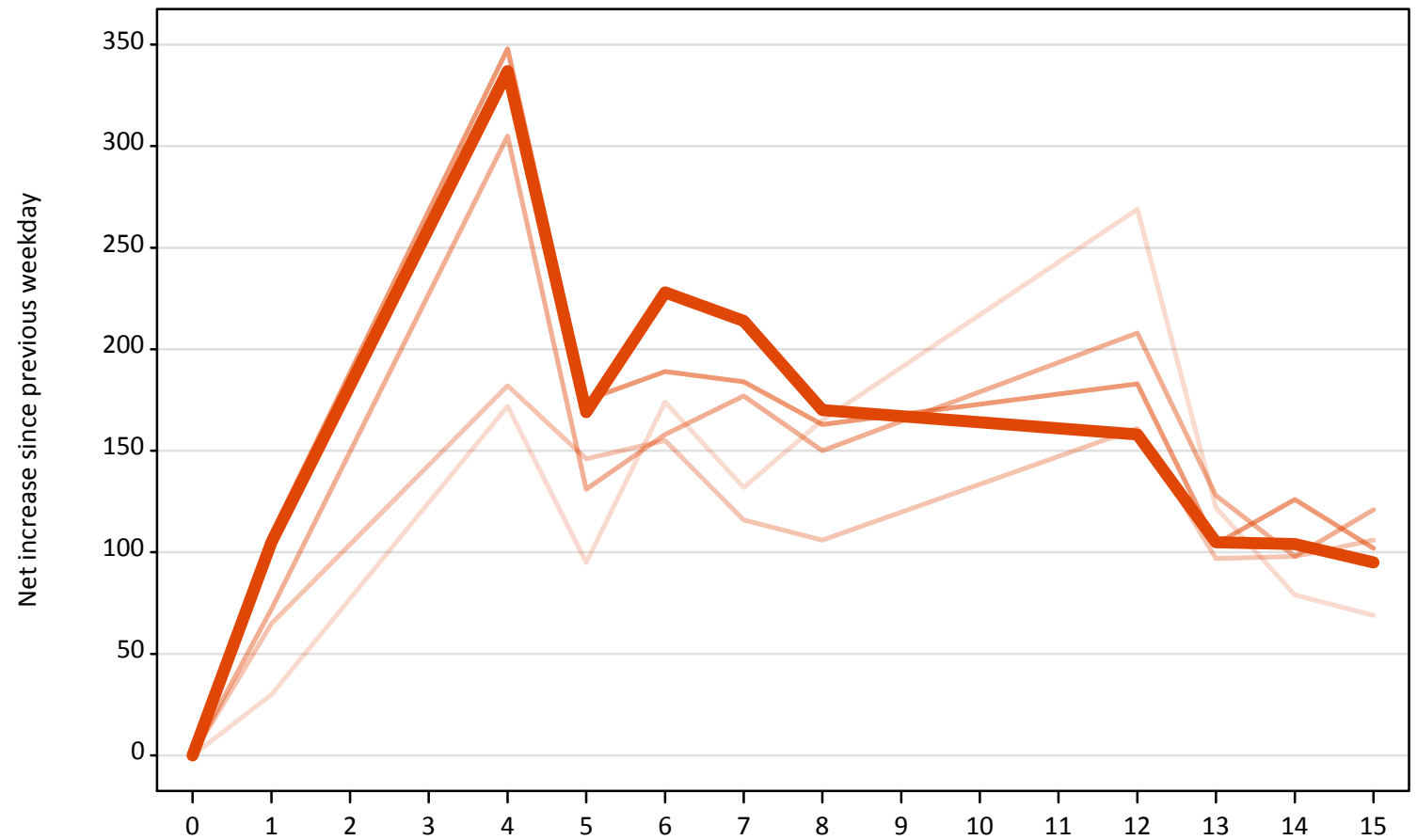
AB.19 All Placed: Daily net change (from all domiciles)

Net increase since previous weekday (2019 cycle up to 15 days after A level results day)

Applicant status, days since A level results day		2015	2016	2017	2018	2019
All Placed	0	0	0	0	0	0
	1	560	490	610	540	590
	4	720	480	810	840	870
	5	300	360	320	360	400
	6	440	320	310	390	430
	7	320	290	340	340	410
	8	620	610	530	530	560
	12	880	550	540	480	460
	13	350	360	330	270	320
	14	240	330	310	320	330
	15	200	310	320	250	260

AB.20 Placed through Clearing only: Daily net change (from all domiciles)
Net increase since previous weekday (2019 cycle up to 15 days after A level results day)

- 2015
- 2016
- 2017
- 2018
- 2019**



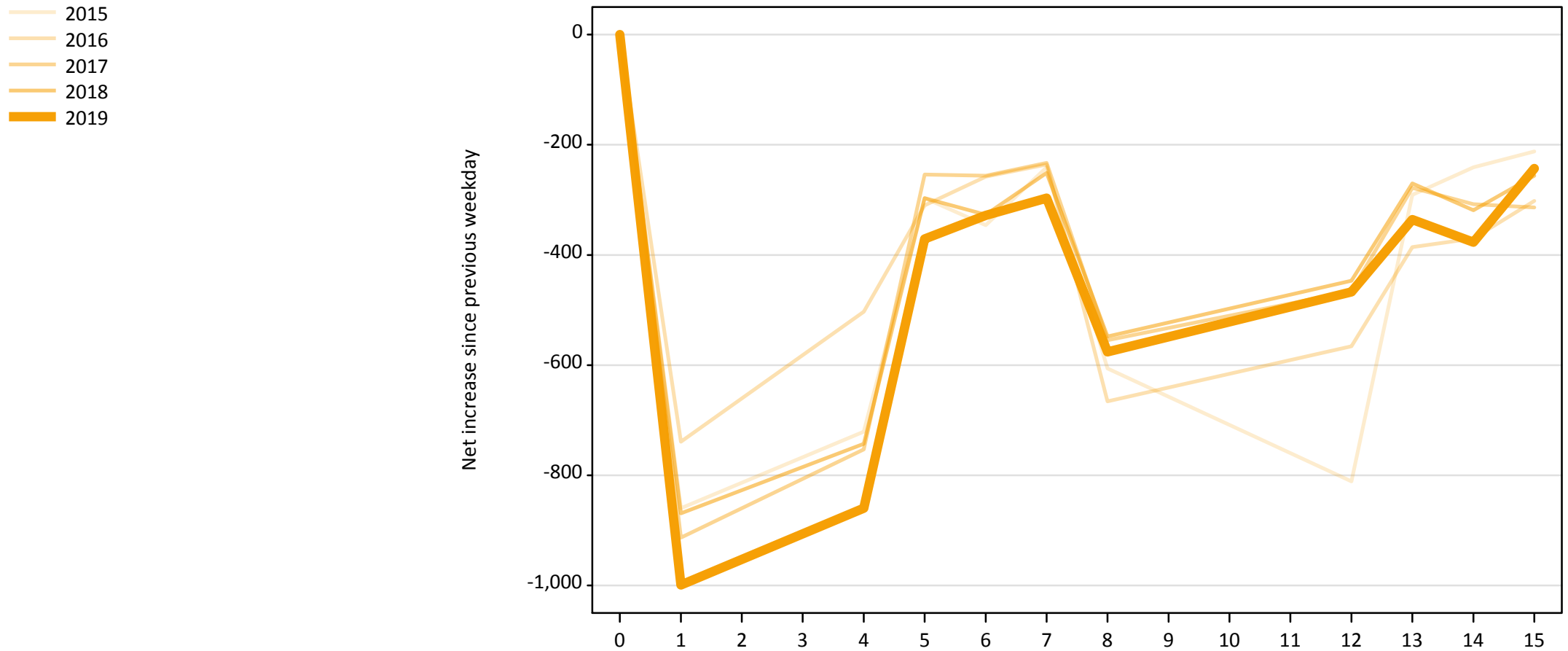
AB.21 Placed through Clearing only: Daily net change (from all domiciles)

Net increase since previous weekday (2019 cycle up to 15 days after A level results day)

Applicant status, days since A level results day		2015	2016	2017	2018	2019
Placed through Clearing only	0	0	0	0	0	0
	1	30	70	70	110	110
	4	170	180	310	350	340
	5	100	150	130	180	170
	6	170	160	160	190	230
	7	130	120	180	180	210
	8	170	110	150	160	170
	12	270	160	210	180	160
	13	120	100	130	100	110
	14	80	100	100	130	100
	15	70	110	120	100	100

AB.22 Holding Offer: Daily net change (from all domiciles)

Net increase since previous weekday (2019 cycle up to 15 days after A level results day)



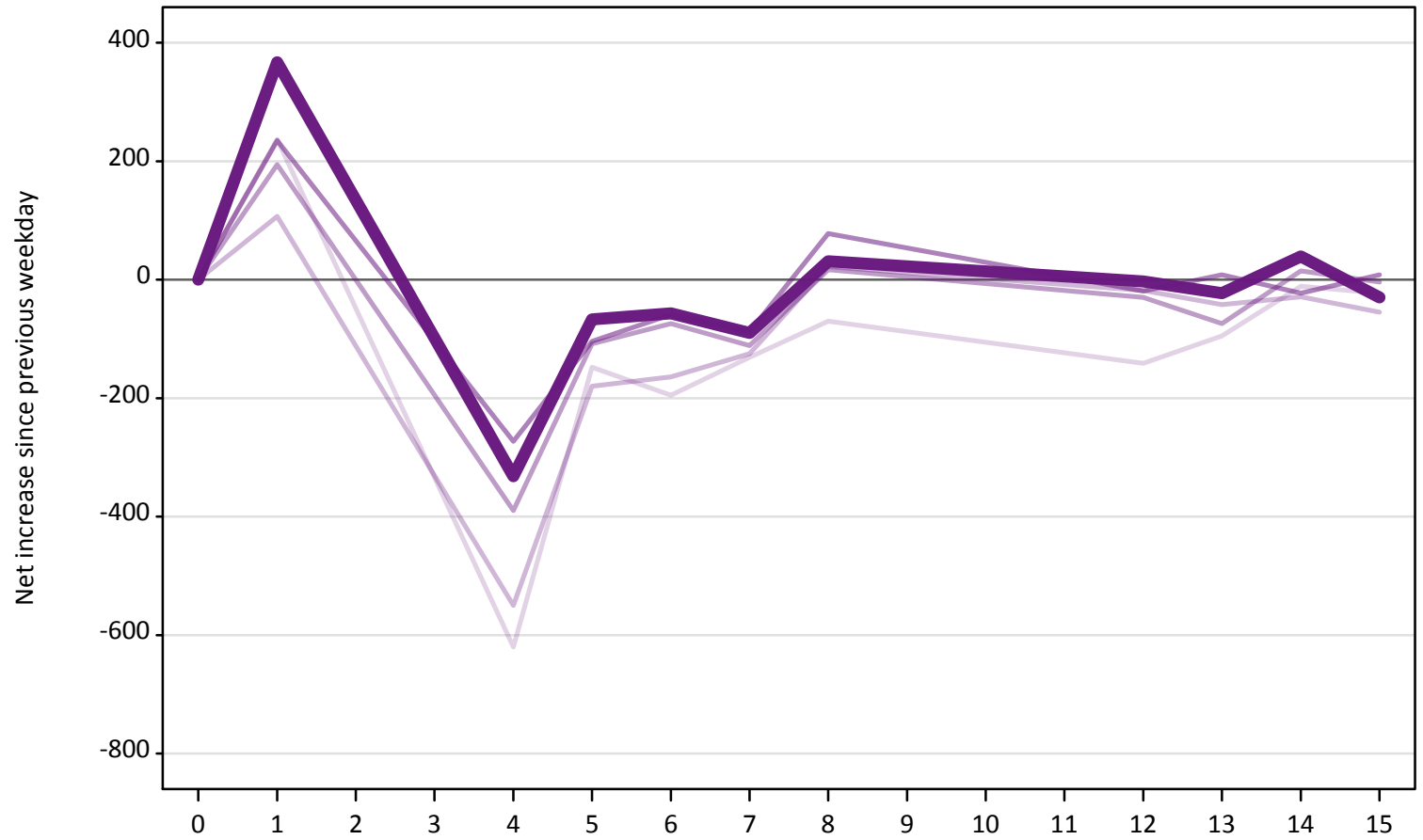
AB.23 Holding Offer: Daily net change (from all domiciles)

Net increase since previous weekday (2019 cycle up to 15 days after A level results day)

Applicant status, days since A level results day	2015	2016	2017	2018	2019	
Holding Offer	0	0	0	0	0	
	1	-860	-740	-910	-870	-1,000
	4	-720	-500	-750	-740	-860
	5	-300	-310	-250	-300	-370
	6	-350	-260	-260	-330	-330
	7	-240	-240	-230	-250	-300
	8	-610	-670	-560	-550	-580
	12	-810	-570	-470	-450	-470
	13	-290	-390	-280	-270	-340
	14	-240	-370	-310	-320	-380
	15	-210	-300	-310	-260	-240

AB.24 Free to be placed in Clearing: Daily net change (from all domiciles)
Net increase since previous weekday (2019 cycle up to 15 days after A level results day)

- 2015
- 2016
- 2017
- 2018
- 2019



AB.25 Free to be placed in Clearing: Daily net change (from all domiciles)

Net increase since previous weekday (2019 cycle up to 15 days after A level results day)

Applicant status, days since A level results day		2015	2016	2017	2018	2019
Free to be placed in Clearing	0	0	0	0	0	0
	1	240	110	190	240	370
	4	-620	-550	-390	-270	-330
	5	-150	-180	-110	-100	-70
	6	-200	-160	-70	-60	-60
	7	-130	-130	-110	-90	-90
	8	-70	20	20	80	30
	12	-140	-20	-30	-20	0
	13	-100	-40	-70	10	-20
	14	-10	-30	20	-20	40
	15	-20	-60	0	10	-30