

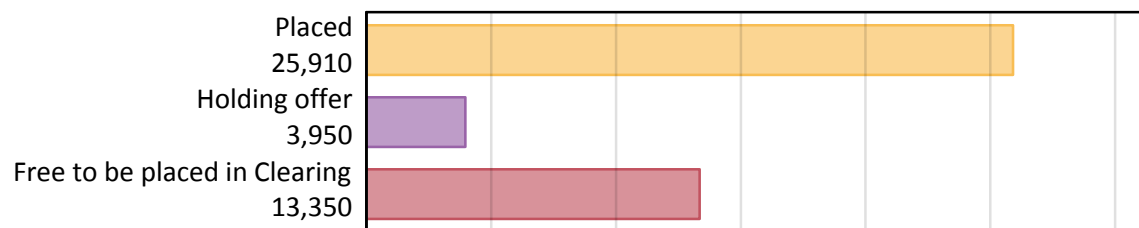
Daily Clearing Analysis: Overview

B7 Nursing analysis at 00:05 on Friday 30 August 2019 (15 days after A level results day)

AB.1 Placed applicants to nursing from the UK, 2019 cycle

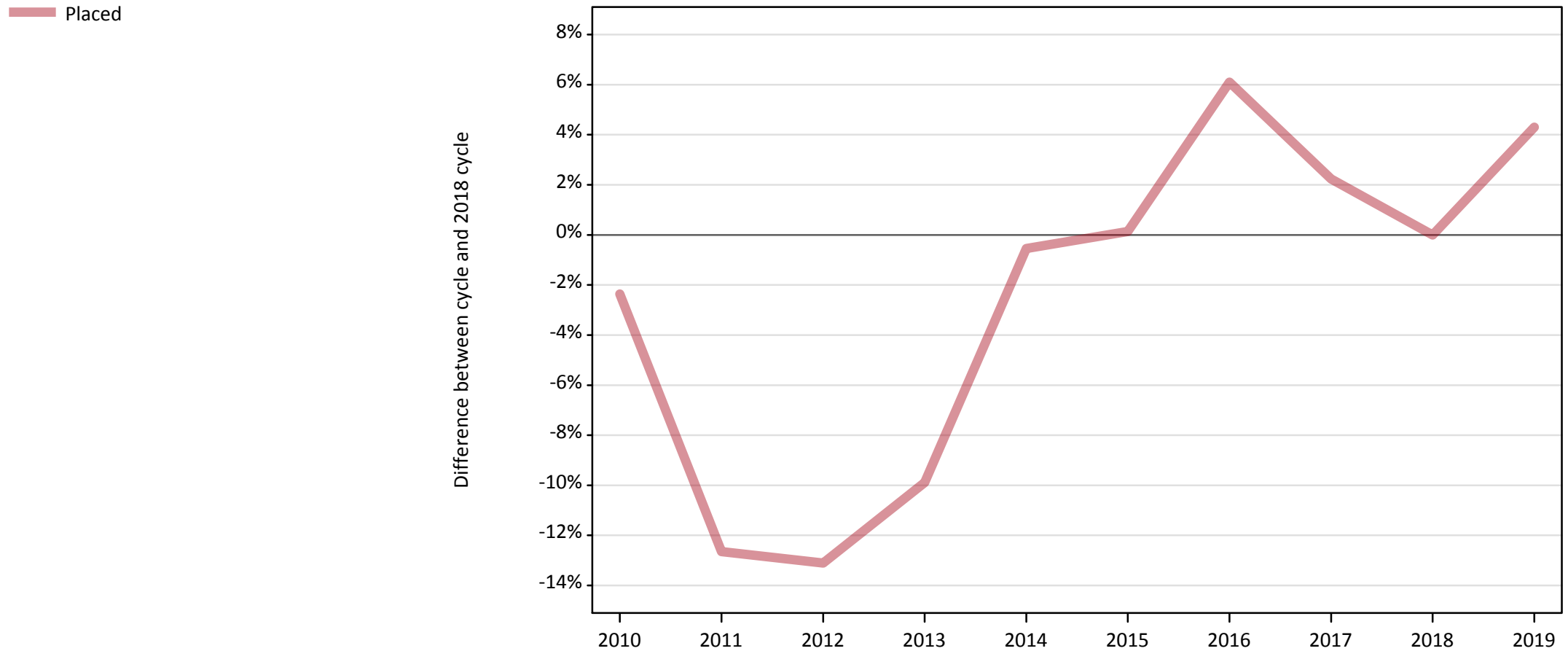
Applicant type	Status	2019
Main scheme	Placed (Clearing)	1,520
	Placed (Adjustment)	10
	Placed (Firm)	22,160
	Placed (Insurance)	540
	Placed (Other)	1,180
	Holding offer	3,950
	Free to be placed in Clearing	13,350
Direct to Clearing	Placed (Direct to Clearing)	500
	Other (Direct to Clearing)	460
All applicants	Placed	25,910

AB.2 Summary of nursing applicants who are placed, holding offers or free to be placed in Clearing (the UK)



AB.3 Placed applicants to nursing from the UK: 15 days after A level results day

Placed applicants to nursing: difference between cycle and 2018 cycle



Note: The percentage change is not plotted in the above chart for groups with fewer than 30 placed applicants in any one cycle.

AB.4 Placed applicants to nursing from the UK: 15 days after A level results day

Placed applicants to nursing: applicants at 15 days after A level results day

Applicant type	Status	2010	2011	2012	2013	2014	2015	2016	2017	2018	2019
All applicants	Placed	24,260	21,700	21,590	22,390	24,710	24,880	26,360	25,400	24,840	25,910

AB.5 Placed applicants to nursing from the UK: 15 days after A level results day

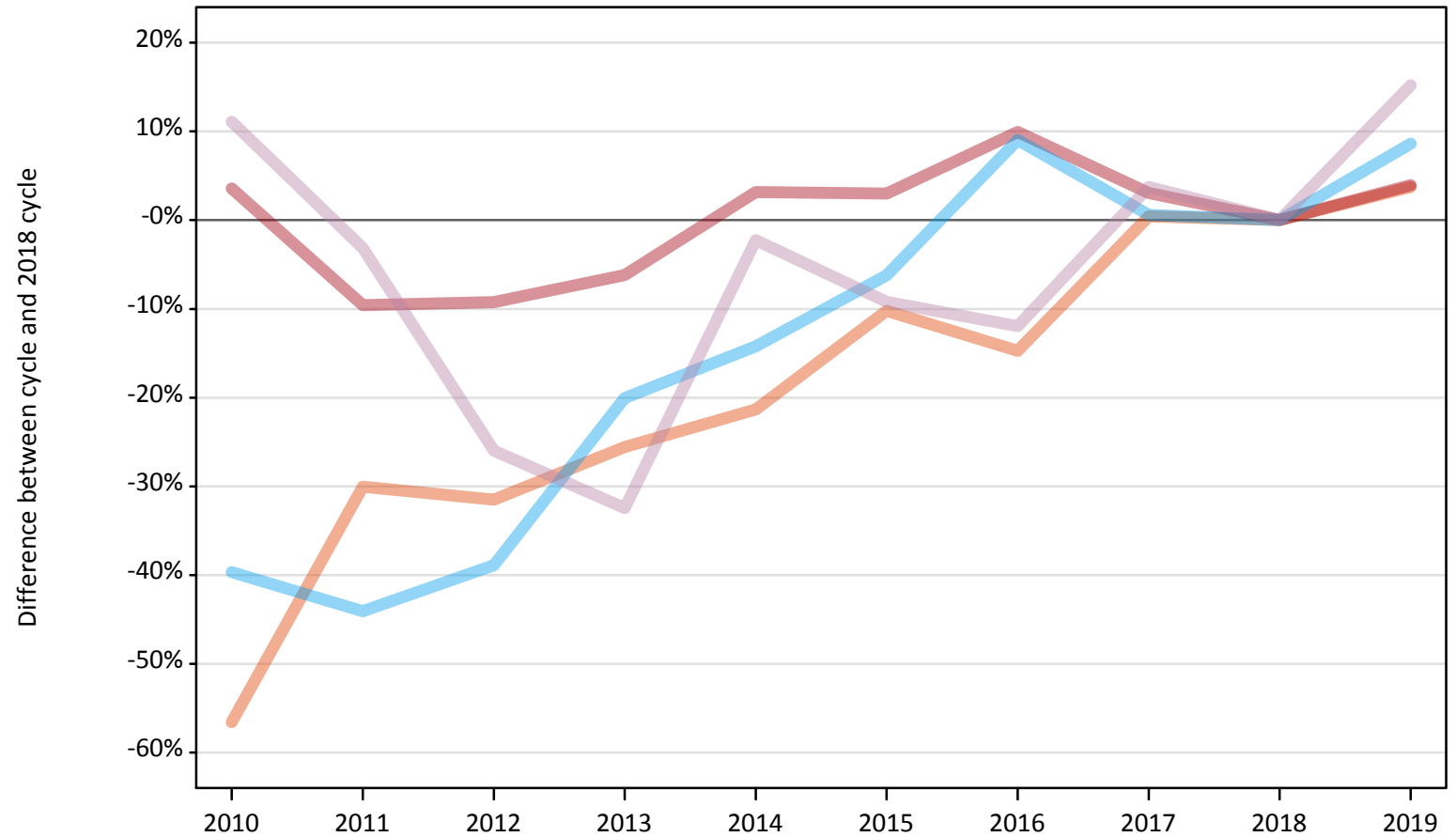
Placed applicants to nursing: difference between cycle and 2018 cycle

Applicant type	Status	2010	2011	2012	2013	2014	2015	2016	2017	2018	2019
All applicants	Placed	-2%	-13%	-13%	-10%	-1%	0%	6%	2%	0%	4%

Note: The percentage change is not recorded in the above table for groups with fewer than 10 placed applicants in that cycle or in the 2018 cycle.

AB.6 Placed main scheme applicants to nursing from the UK: 15 days after A level results day
All Main scheme placed routes (excluding Adjustment): difference between cycle and 2018 cycle

- Placed (Clearing)
- Placed (Firm)
- Placed (Insurance)
- Placed (Other)



Note: The percentage change is not plotted in the above chart for groups with fewer than 30 placed applicants in any one cycle.

AB.7 Placed main scheme applicants to nursing from the UK: 15 days after A level results day

All Main scheme placed routes (excluding Adjustment): applicants at 15 days after A level results day

Applicant type	Status	2010	2011	2012	2013	2014	2015	2016	2017	2018	2019
Main scheme	Placed (Clearing)	640	1,030	1,010	1,090	1,150	1,320	1,250	1,470	1,470	1,520
	Placed (Firm)	22,080	19,270	19,350	20,000	21,990	21,950	23,440	21,970	21,320	22,160
	Placed (Insurance)	300	280	310	400	430	470	540	500	500	540
	Placed (Other)	1,130	990	760	690	1,000	930	900	1,060	1,020	1,180

AB.8 Placed main scheme applicants to nursing from the UK: 15 days after A level results day

All Main scheme placed routes (excluding Adjustment): difference between cycle and 2018 cycle

Applicant type	Status	2010	2011	2012	2013	2014	2015	2016	2017	2018	2019
Main scheme	Placed (Clearing)	-57%	-30%	-31%	-26%	-21%	-10%	-15%	0%	0%	4%
	Placed (Firm)	4%	-10%	-9%	-6%	3%	3%	10%	3%	0%	4%
	Placed (Insurance)	-40%	-44%	-39%	-20%	-14%	-6%	9%	1%	0%	9%
	Placed (Other)	11%	-3%	-26%	-32%	-2%	-9%	-12%	4%	0%	15%

Note: The percentage change is not recorded in the above table for groups with fewer than 10 placed applicants in that cycle or in the 2018 cycle.

AB.9 Main scheme applicants placed to nursing through adjustment: 15 days after A level results day

Placed through adjustment: difference between cycle and 2018 cycle

[This chart is not part of this report]

AB.10 Main scheme applicants placed to nursing through adjustment: 15 days after A level results day

Placed through adjustment: applicants at 15 days after A level results day

Applicant type	Status	2010	2011	2012	2013	2014	2015	2016	2017	2018	2019
Main scheme	Placed (Adjustment)	0	0	0	10	10	10	0	20	10	10

AB.11 Main scheme applicants placed to nursing through adjustment: 15 days after A level results day

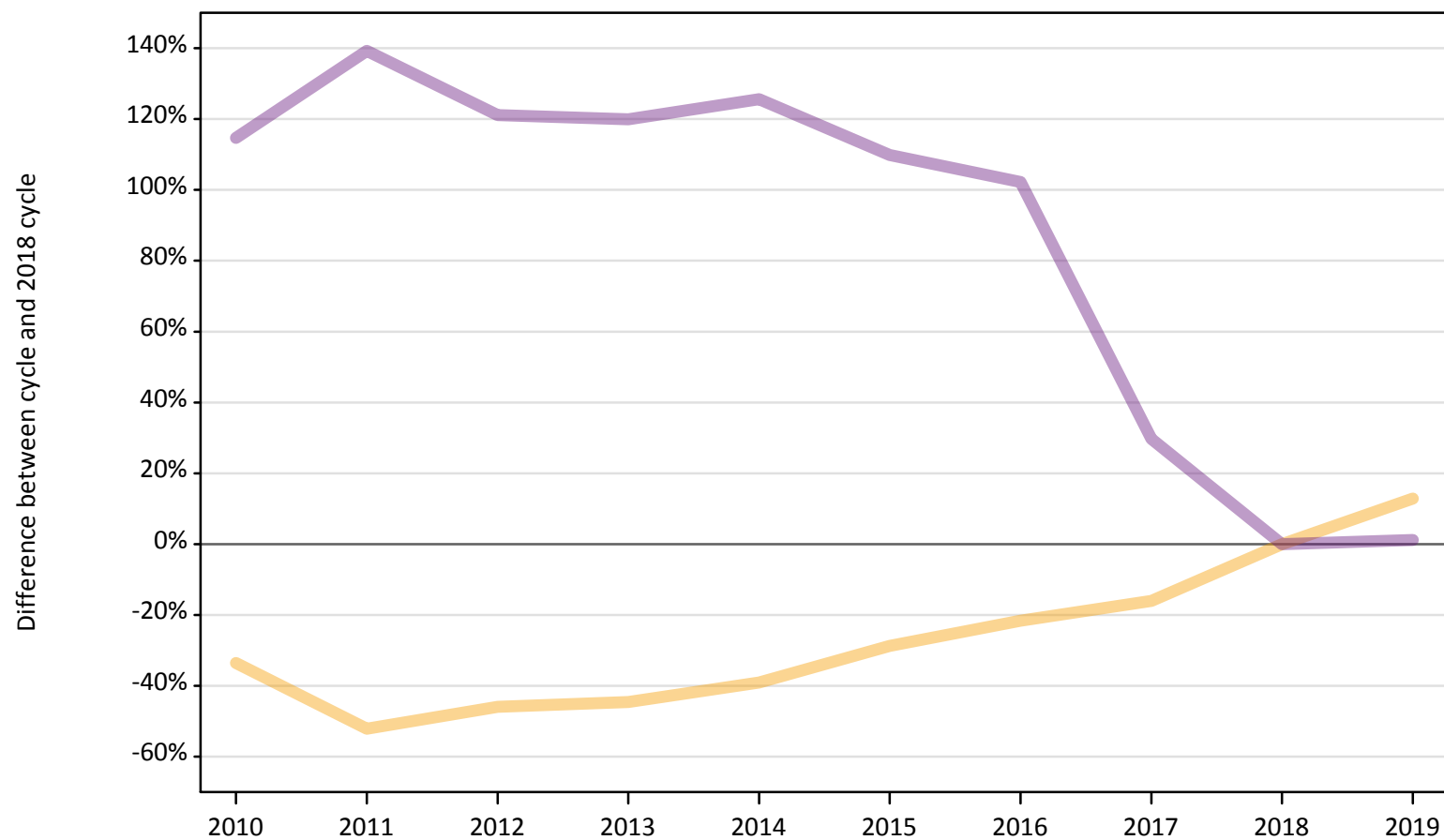
Placed through adjustment: difference between cycle and 2018 cycle

[This table is not part of this report]

AB.12 Main scheme applicants to nursing not currently placed from the UK: 15 days after A level results day

Applicants in unplaced states: difference between cycle and 2018 cycle

— Holding offer
— Free to be placed in Clearing



Note: The percentage change is not plotted in the above chart for groups with fewer than 30 unplaced applicants in any one cycle.

AB.13 Main scheme applicants to nursing not currently placed from the UK: 15 days after A level results day

Applicants in unplaced states: applicants at 15 days after A level results day

Applicant type	Status	2010	2011	2012	2013	2014	2015	2016	2017	2018	2019
Main scheme	Holding offer	2,330	1,680	1,890	1,940	2,140	2,500	2,750	2,940	3,500	3,950
	Free to be placed in Clearing	28,330	31,580	29,180	29,030	29,780	27,690	26,690	17,120	13,200	13,350

AB.14 Main scheme applicants to nursing not currently placed from the UK: 15 days after A level results day

Applicants in unplaced states: difference between cycle and 2018 cycle

Applicant type	Status	2010	2011	2012	2013	2014	2015	2016	2017	2018	2019
Main scheme	Holding offer	-34%	-52%	-46%	-45%	-39%	-29%	-22%	-16%	0%	13%
	Free to be placed in Clearing	115%	139%	121%	120%	126%	110%	102%	30%	0%	1%

Note: The percentage change is not recorded in the above table for groups with fewer than 10 unplaced applicants in that cycle or in the 2018 cycle.

AB.15 Direct to Clearing applicants from the UK: 15 days after A level results day

Direct to Clearing: difference between cycle and 2018 cycle



Note: The percentage change is not plotted in the above chart for groups with fewer than 30 placed applicants in any one cycle.

AB.16 Direct to Clearing applicants from the UK: 15 days after A level results day

Direct to Clearing 15 days after A level results day

Applicant type	Status	2010	2011	2012	2013	2014	2015	2016	2017	2018	2019
Direct to Clearing	Placed (Direct to Clearing)	110	130	170	200	130	210	230	380	530	500
	Other (Direct to Clearing)	50	110	130	160	130	230	220	330	400	460

AB.17 Direct to Clearing applicants from the UK: 15 days after A level results day

Direct to Clearing: difference between cycle and 2018 cycle

Applicant type	Status	2010	2011	2012	2013	2014	2015	2016	2017	2018	2019
Direct to Clearing	Placed (Direct to Clearing)	-80%	-75%	-68%	-62%	-75%	-61%	-58%	-29%	0%	-5%
	Other (Direct to Clearing)	-88%	-72%	-67%	-59%	-68%	-43%	-46%	-19%	0%	16%

Note: The percentage change is not recorded in the above table for groups with fewer than 10 placed applicants in that cycle or in the 2018 cycle.