

## B7 Nursing analysis at 00:05 on Friday 30 August 2019 (15 days after A level results day)

### CB.1 Placed applicants to nursing by country of domicile and age group, 2019 cycle (15 days after A level results day)

Domicile of applicant	Age group				
	17 and under	18	19	20 to 24	25 and over
England	0	5,070	2,380	4,240	7,980
Northern Ireland	0	340	190	250	290
Scotland	30	690	350	780	1,610
Wales	0	360	240	420	720
UK	30	6,450	3,160	5,680	10,590

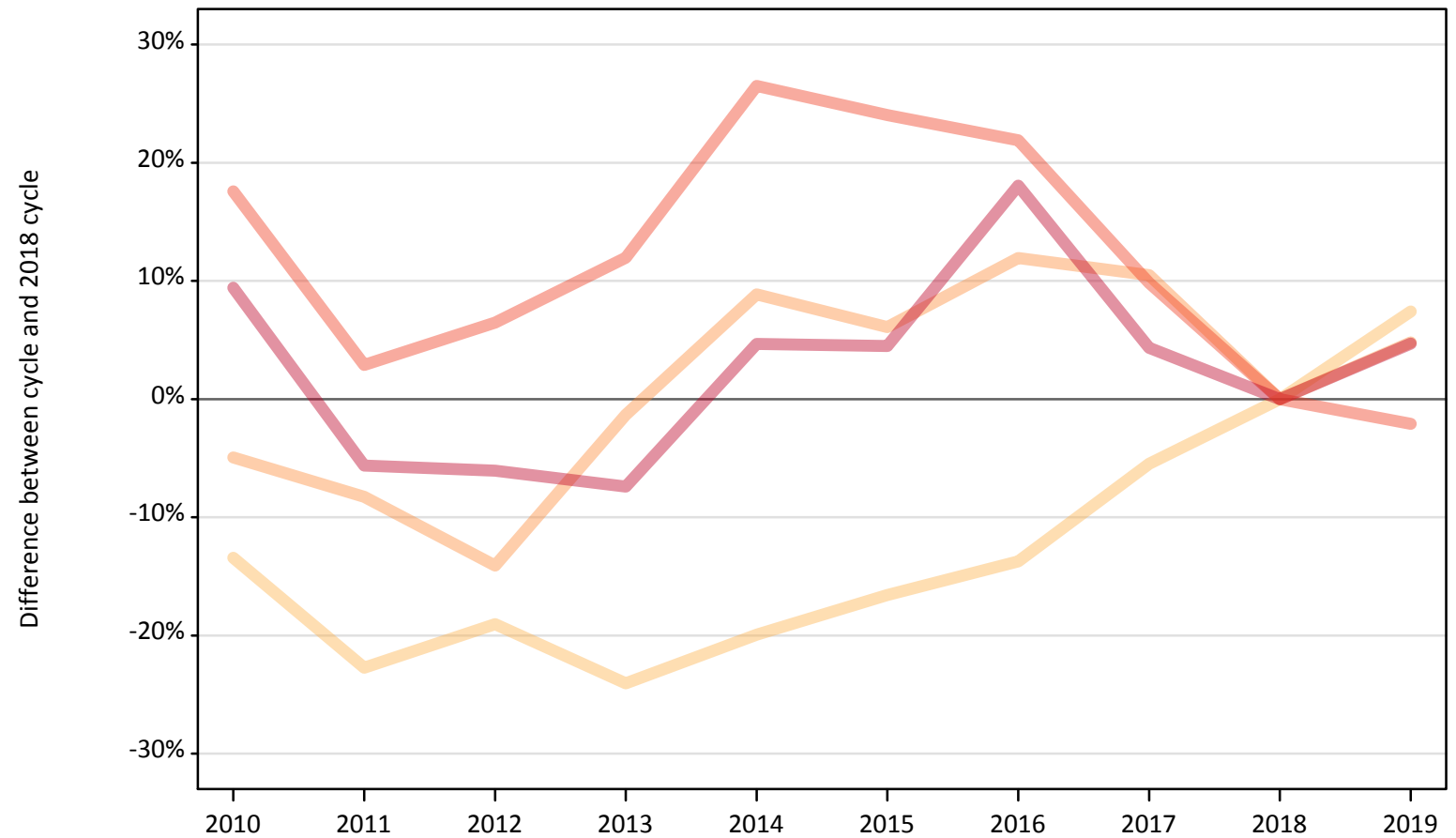
### CB.2 Proportion of 18 year old population placed to nursing by country of domicile, 2019 cycle (15 days after A level results day)

Domicile of applicant	Age group	2019
England	18	0.8%
Northern Ireland	18	1.5%
Scotland	18	1.3%
Wales	18	1.1%

### CB.3 Placed applicants to nursing from England by age group at 15 days after A level results day

Selected age groups: difference between cycle and 2018 cycle

- 17 and under
- 18
- 19
- 20 to 24
- 25 and over



Note: The percentage change is not plotted in the above chart for groups with fewer than 30 placed applicants in any one cycle.

### CB.4 Placed applicants to nursing from England by age group at 15 days after A level results day

All age groups

Domicile of applicant	Age group	2010	2011	2012	2013	2014	2015	2016	2017	2018	2019
England	17 and under	80	30	0	0	10	0	0	10	10	0
	18	4,080	3,640	3,820	3,580	3,780	3,930	4,070	4,460	4,720	5,070
	19	2,160	2,080	1,950	2,240	2,470	2,410	2,540	2,510	2,270	2,380
	20 to 24	5,090	4,450	4,610	4,840	5,470	5,370	5,270	4,750	4,330	4,240
	25 and over	8,340	7,190	7,160	7,050	7,970	7,960	8,990	7,950	7,620	7,980

### CB.5 Placed applicants to nursing from England by age group at 15 days after A level results day

Selected age groups: difference between cycle and 2018 cycle

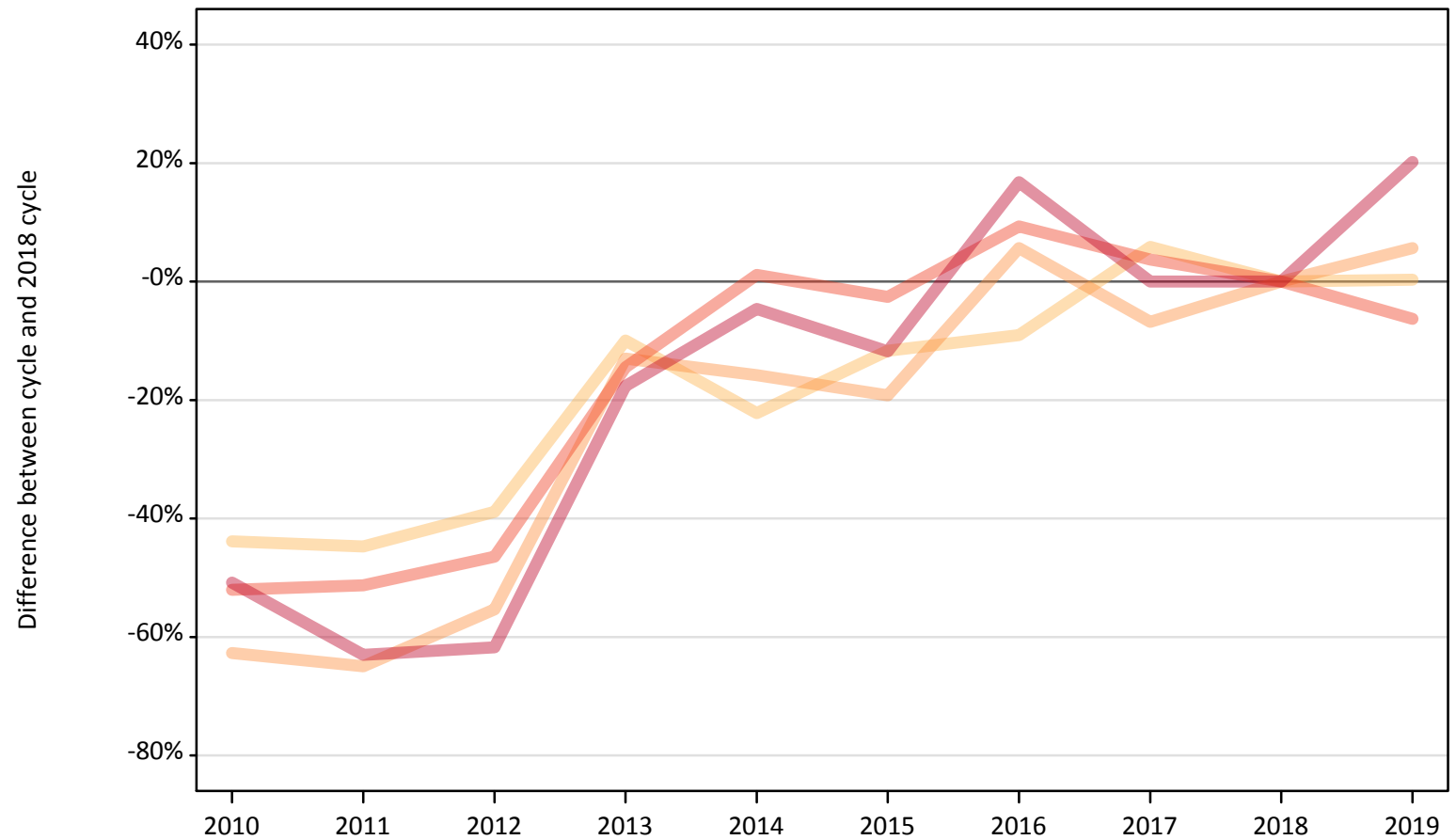
Domicile of applicant	Age group	2010	2011	2012	2013	2014	2015	2016	2017	2018	2019
England	17 and under										
	18	-13%	-23%	-19%	-24%	-20%	-17%	-14%	-5%	0%	7%
	19	-5%	-8%	-14%	-1%	9%	6%	12%	10%	0%	5%
	20 to 24	18%	3%	6%	12%	27%	24%	22%	10%	0%	-2%
	25 and over	9%	-6%	-6%	-7%	5%	4%	18%	4%	0%	5%

Note: The percentage change is not recorded in the above table for groups with fewer than 10 placed applicants in that cycle or in the 2018 cycle.

## CB.6 Placed applicants to nursing from Northern Ireland by age group at 15 days after A level results day

Selected age groups: difference between cycle and 2018 cycle

- 17 and under
- 18
- 19
- 20 to 24
- 25 and over



Note: The percentage change is not plotted in the above chart for groups with fewer than 30 placed applicants in any one cycle.

### CB.7 Placed applicants to nursing from Northern Ireland by age group at 15 days after A level results day

All age groups

Domicile of applicant	Age group	2010	2011	2012	2013	2014	2015	2016	2017	2018	2019
Northern Ireland	17 and under	0	0	0	0	0	0	0	0	0	0
	18	190	190	210	310	270	300	310	360	340	340
	19	70	60	80	150	150	140	190	170	180	190
	20 to 24	130	130	140	230	270	260	290	280	270	250
	25 and over	120	90	90	200	230	210	280	240	240	290

### CB.8 Placed applicants to nursing from Northern Ireland by age group at 15 days after A level results day

Selected age groups: difference between cycle and 2018 cycle

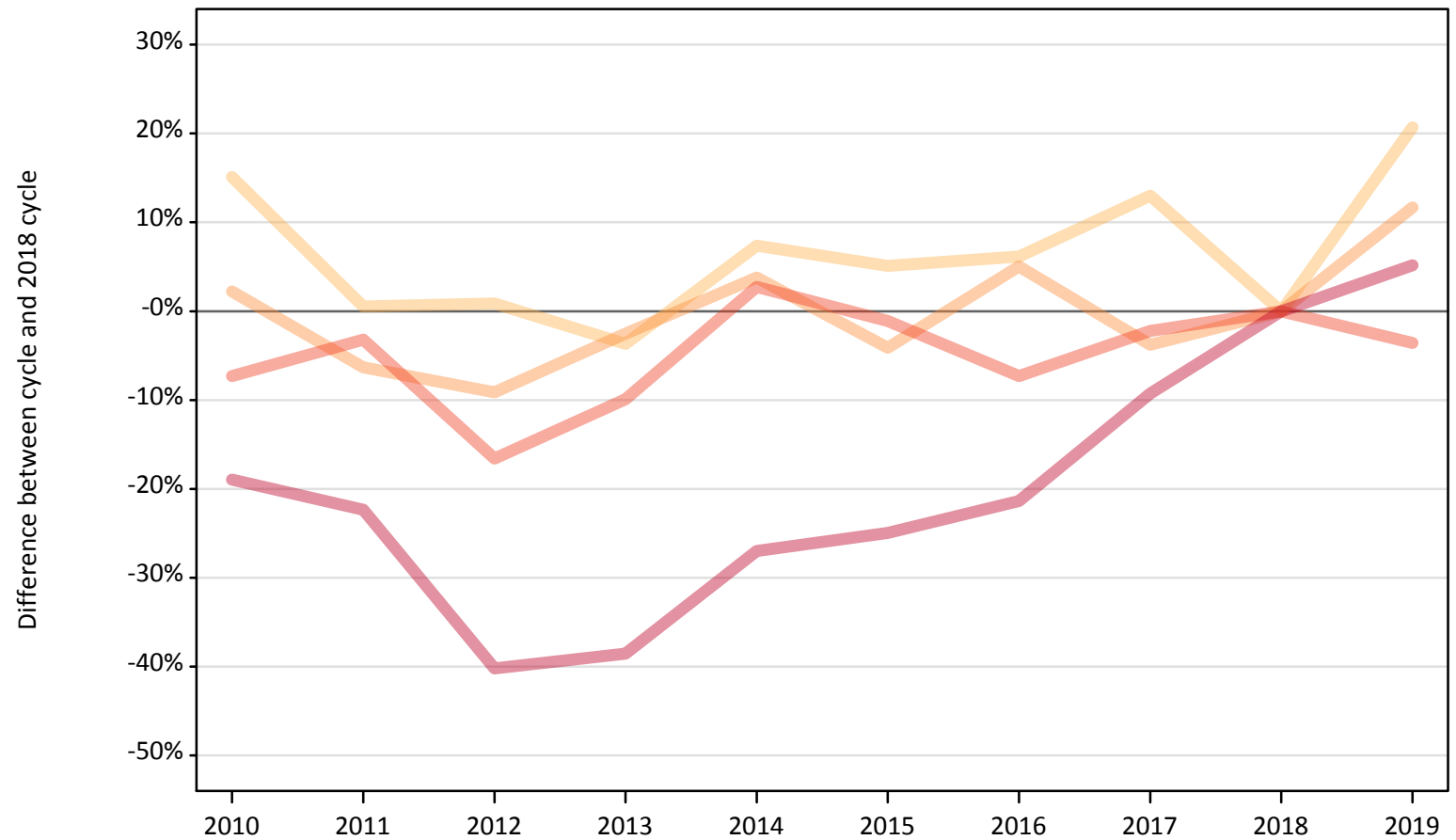
Domicile of applicant	Age group	2010	2011	2012	2013	2014	2015	2016	2017	2018	2019
Northern Ireland	17 and under										
	18	-44%	-45%	-39%	-10%	-22%	-12%	-9%	6%	0%	0%
	19	-63%	-65%	-55%	-13%	-16%	-19%	6%	-7%	0%	6%
	20 to 24	-52%	-51%	-46%	-14%	1%	-3%	9%	4%	0%	-6%
	25 and over	-51%	-63%	-62%	-18%	-5%	-12%	17%	0%	0%	20%

Note: The percentage change is not recorded in the above table for groups with fewer than 10 placed applicants in that cycle or in the 2018 cycle.

## CB.9 Placed applicants to nursing from Scotland by age group at 15 days after A level results day

Selected age groups: difference between cycle and 2018 cycle

- 17 and under
- 18
- 19
- 20 to 24
- 25 and over



Note: The percentage change is not plotted in the above chart for groups with fewer than 30 placed applicants in any one cycle.

### CB.10 Placed applicants to nursing from Scotland by age group at 15 days after A level results day

All age groups

Domicile of applicant	Age group	2010	2011	2012	2013	2014	2015	2016	2017	2018	2019
Scotland	17 and under	40	30	30	20	20	10	20	20	20	30
	18	660	570	580	550	610	600	610	640	570	690
	19	320	300	290	310	330	300	330	310	320	350
	20 to 24	750	780	670	730	830	800	750	790	810	780
	25 and over	1,240	1,190	920	940	1,120	1,150	1,200	1,390	1,530	1,610

### CB.11 Placed applicants to nursing from Scotland by age group at 15 days after A level results day

Selected age groups: difference between cycle and 2018 cycle

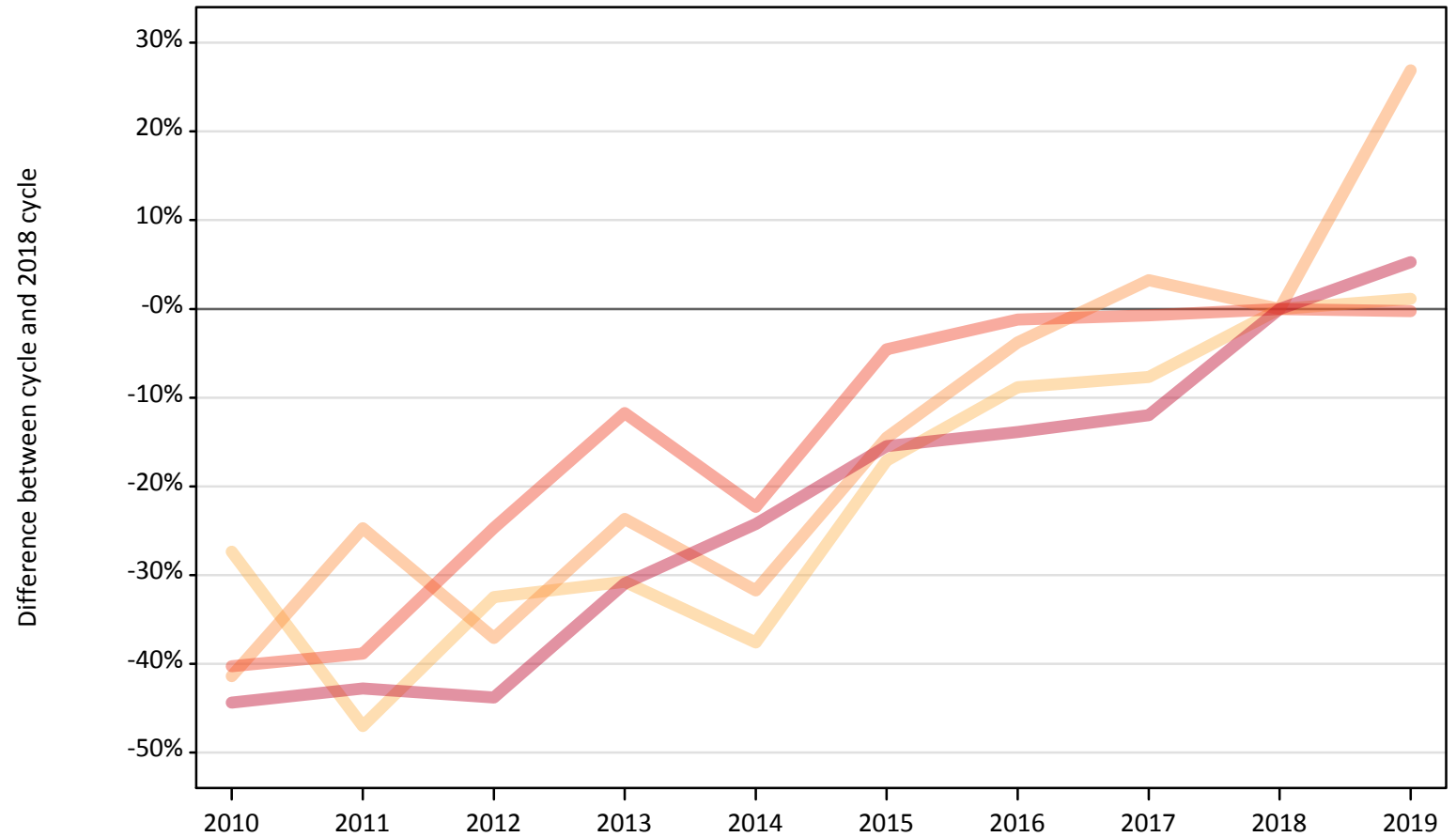
Domicile of applicant	Age group	2010	2011	2012	2013	2014	2015	2016	2017	2018	2019
Scotland	17 and under	144%	39%	44%	22%	-6%	-28%	-6%	22%	0%	39%
	18	15%	1%	1%	-4%	7%	5%	6%	13%	0%	21%
	19	2%	-6%	-9%	-3%	4%	-4%	5%	-4%	0%	12%
	20 to 24	-7%	-3%	-17%	-10%	3%	-1%	-7%	-2%	0%	-4%
	25 and over	-19%	-22%	-40%	-39%	-27%	-25%	-21%	-9%	0%	5%

Note: The percentage change is not recorded in the above table for groups with fewer than 10 placed applicants in that cycle or in the 2018 cycle.

### CB.12 Placed applicants to nursing from Wales by age group at 15 days after A level results day

Selected age groups: difference between cycle and 2018 cycle

- 17 and under
- 18
- 19
- 20 to 24
- 25 and over



Note: The percentage change is not plotted in the above chart for groups with fewer than 30 placed applicants in any one cycle.



### CB.13 Placed applicants to nursing from Wales by age group at 15 days after A level results day

All age groups

Domicile of applicant	Age group	2010	2011	2012	2013	2014	2015	2016	2017	2018	2019
Wales	17 and under	0	0	0	0	0	0	0	0	0	0
	18	260	190	240	240	220	290	320	320	350	360
	19	110	140	120	140	130	160	180	190	190	240
	20 to 24	250	260	310	370	320	400	410	410	420	420
	25 and over	380	390	390	470	520	580	590	600	690	720

### CB.14 Placed applicants to nursing from Wales by age group at 15 days after A level results day

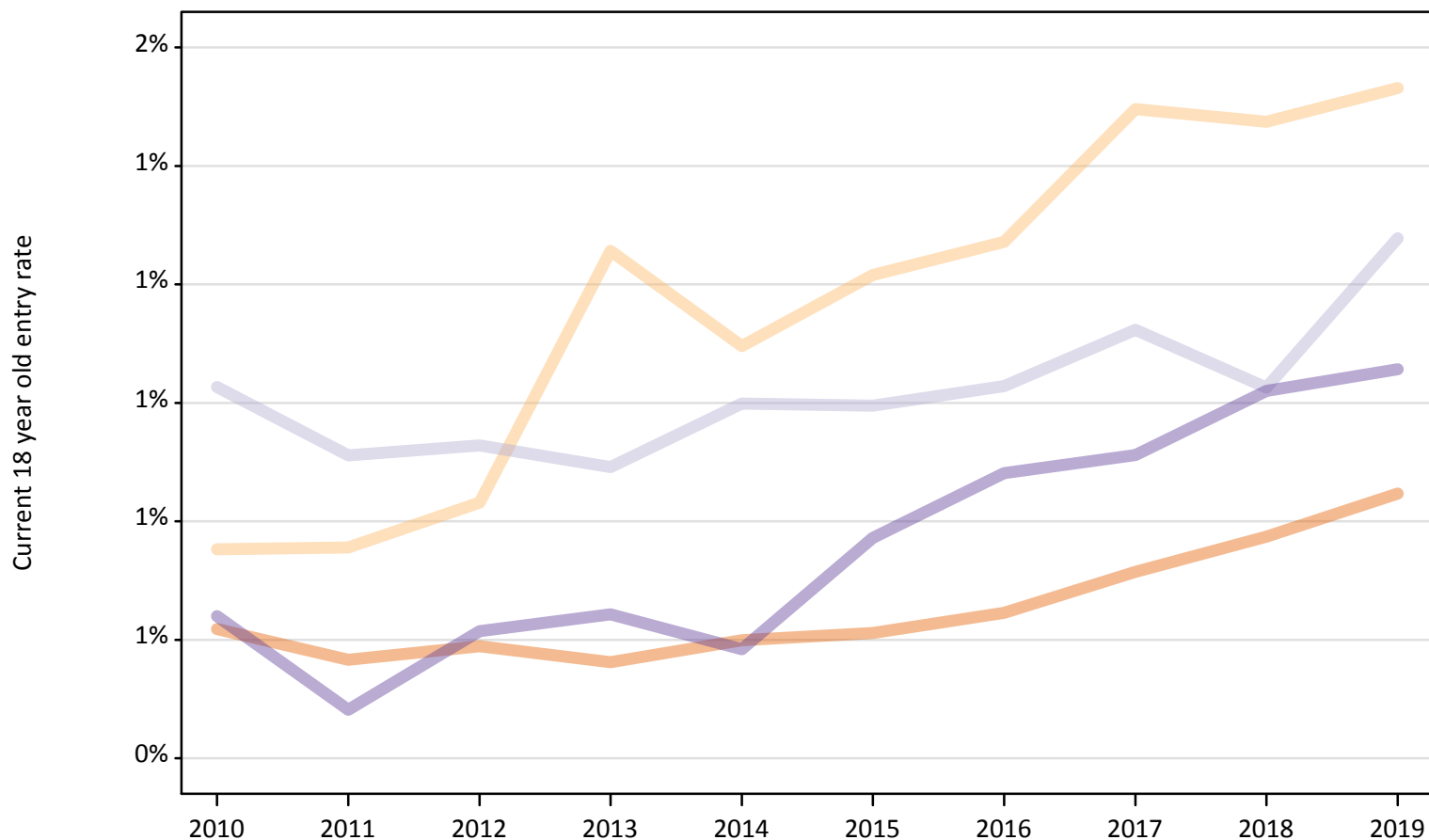
Selected age groups: difference between cycle and 2018 cycle

Domicile of applicant	Age group	2010	2011	2012	2013	2014	2015	2016	2017	2018	2019
Wales	17 and under										
	18	-27%	-47%	-32%	-31%	-38%	-17%	-9%	-8%	0%	1%
	19	-41%	-25%	-37%	-24%	-32%	-15%	-4%	3%	0%	27%
	20 to 24	-40%	-39%	-25%	-12%	-22%	-5%	-1%	-1%	0%	-0%
	25 and over	-44%	-43%	-44%	-31%	-24%	-15%	-14%	-12%	0%	5%

Note: The percentage change is not recorded in the above table for groups with fewer than 10 placed applicants in that cycle or in the 2018 cycle.

**CB.15 Entry rates to nursing for 18 year olds by UK country of domicile: 15 days after A level results day**

Placed 18 year old applicants as a proportion of the 18 year old population



**CB.16 Entry rates to nursing for 18 year olds by UK country of domicile: 15 days after A level results day**

Placed 18 year old applicants as a proportion of the 18 year old population

Domicile of applicant	Age group	2010	2011	2012	2013	2014	2015	2016	2017	2018	2019
England	18	0.6%	0.6%	0.6%	0.6%	0.6%	0.6%	0.6%	0.7%	0.8%	0.8%
Northern Ireland	18	0.8%	0.8%	0.8%	1.3%	1.1%	1.2%	1.3%	1.5%	1.5%	1.5%
Scotland	18	1.0%	0.9%	0.9%	0.9%	1.0%	1.0%	1.0%	1.1%	1.0%	1.3%
Wales	18	0.6%	0.5%	0.6%	0.6%	0.6%	0.8%	0.9%	0.9%	1.0%	1.1%