

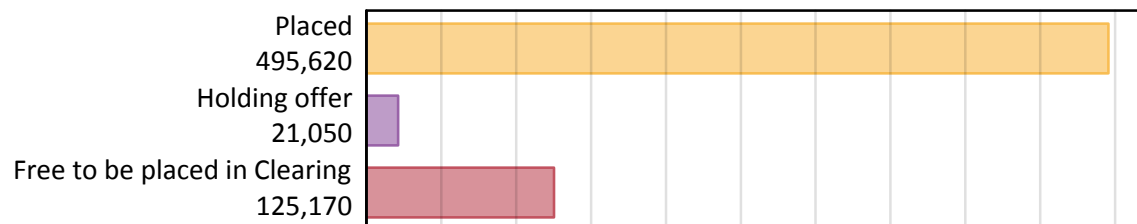
Daily Clearing Analysis: Overview

Analysis at 00:05 on Thursday 12 September 2019 (28 days after A level results day)

A.1 Applicants by type and status from all domiciles, 2019 cycle

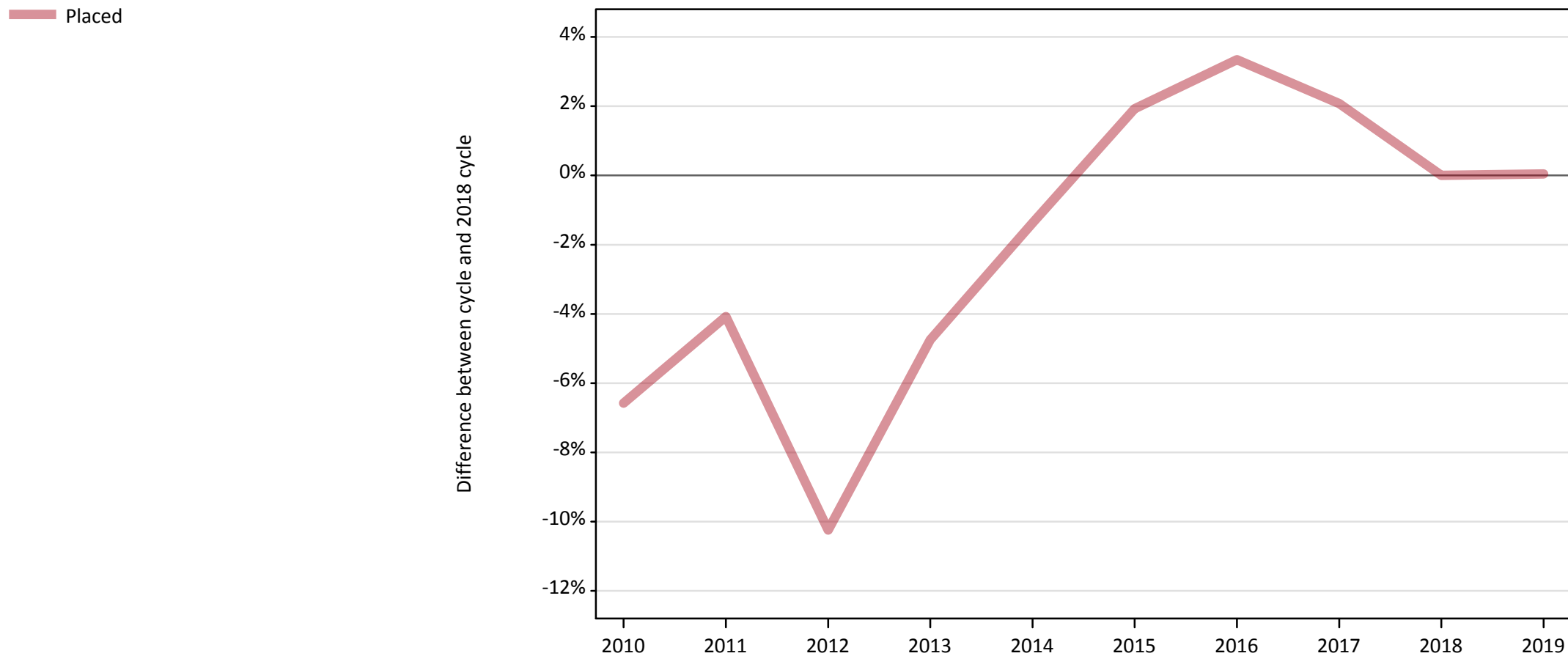
Applicant type	Status	2019
Main scheme	Placed (Clearing)	50,050
	Placed (Adjustment)	600
	Placed (Firm)	380,350
	Placed (Insurance)	34,100
	Placed (Other)	14,770
	Holding offer	21,050
	Free to be placed in Clearing	125,170
Direct to Clearing	Placed (Direct to Clearing)	15,760
	Other (Direct to Clearing)	8,090
All applicants	Placed	495,620

A.2 Summary of applicants who are placed, holding offers or free to be placed in Clearing (all domiciles)



A.3 All placed applicants from all domiciles: 28 days after A level results day

All placed applicants: difference between cycle and 2018 cycle



Note: The percentage change is not plotted in the above chart for groups with fewer than 30 placed applicants in any one cycle.

A.4 All placed applicants from all domiciles: 28 days after A level results day

All placed applicants: applicants at 28 days after A level results day

Applicant type	Status	2010	2011	2012	2013	2014	2015	2016	2017	2018	2019
All applicants	Placed	462,820	475,230	444,640	471,880	488,610	504,950	511,980	505,680	495,410	495,620

A.5 All placed applicants from all domiciles: 28 days after A level results day

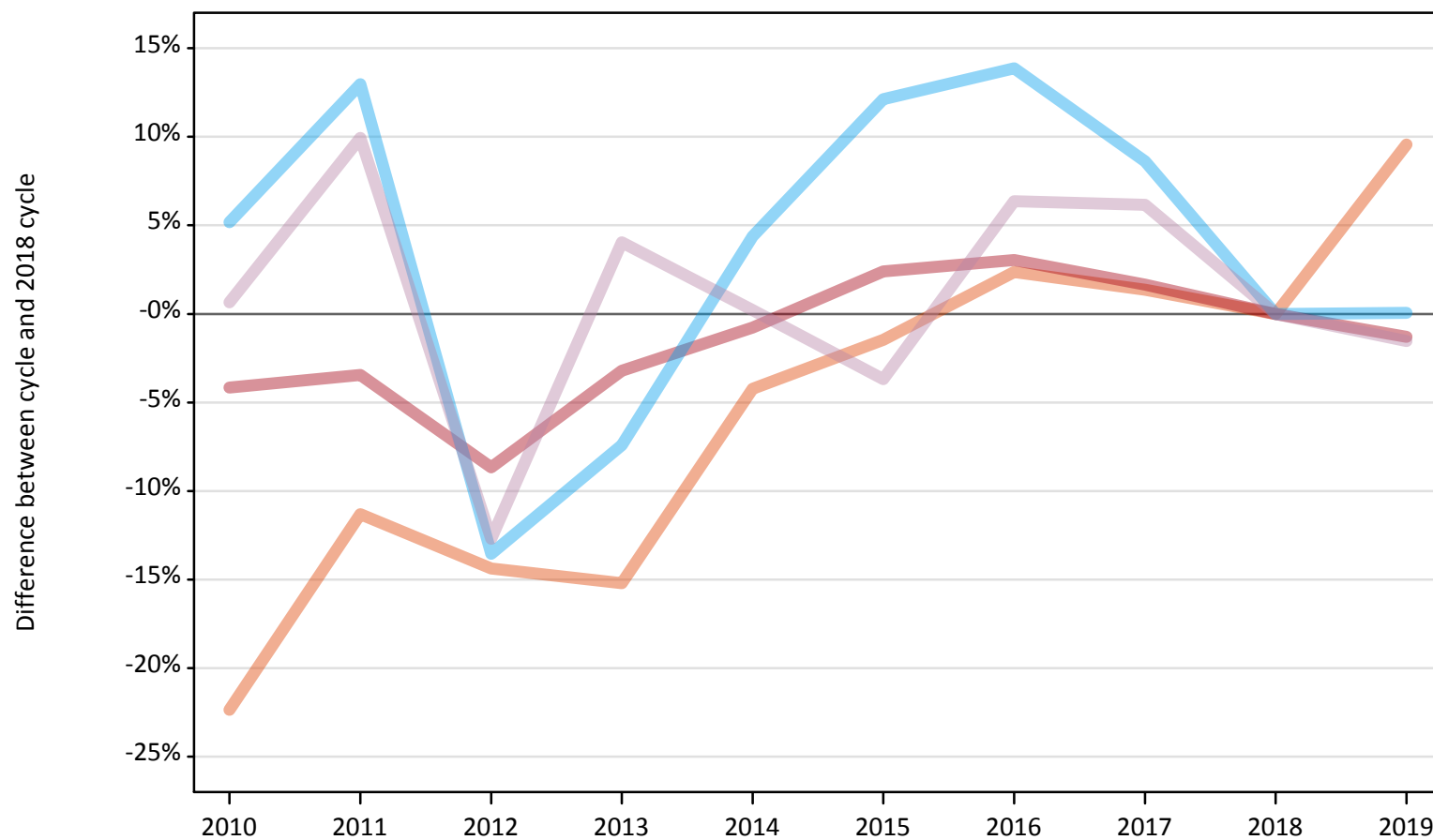
All placed applicants: difference between cycle and 2018 cycle

Applicant type	Status	2010	2011	2012	2013	2014	2015	2016	2017	2018	2019
All applicants	Placed	-7%	-4%	-10%	-5%	-1%	2%	3%	2%	0%	0%

Note: The percentage change is not recorded in the above table for groups with fewer than 10 placed applicants in that cycle or in the 2018 cycle.

A.6 Placed main scheme applicants from all domiciles: 28 days after A level results day
All Main scheme placed routes (excluding Adjustment): difference between cycle and 2018 cycle

- Placed (Clearing)
- Placed (Firm)
- Placed (Insurance)
- Placed (Other)



Note: The percentage change is not plotted in the above chart for groups with fewer than 30 placed applicants in any one cycle.

A.7 Placed main scheme applicants from all domiciles: 28 days after A level results day

All Main scheme placed routes (excluding Adjustment): applicants at 28 days after A level results day

Applicant type	Status	2010	2011	2012	2013	2014	2015	2016	2017	2018	2019
Main scheme	Placed (Clearing)	35,470	40,520	39,110	38,730	43,750	45,010	46,770	46,310	45,690	50,050
	Placed (Firm)	369,290	372,060	351,960	372,980	382,350	394,570	397,050	391,730	385,340	380,350
	Placed (Insurance)	35,850	38,500	29,460	31,550	35,580	38,210	38,810	37,020	34,080	34,100
	Placed (Other)	15,100	16,490	13,100	15,610	15,030	14,450	15,960	15,930	15,000	14,770

A.8 Placed main scheme applicants from all domiciles: 28 days after A level results day

All Main scheme placed routes (excluding Adjustment): difference between cycle and 2018 cycle

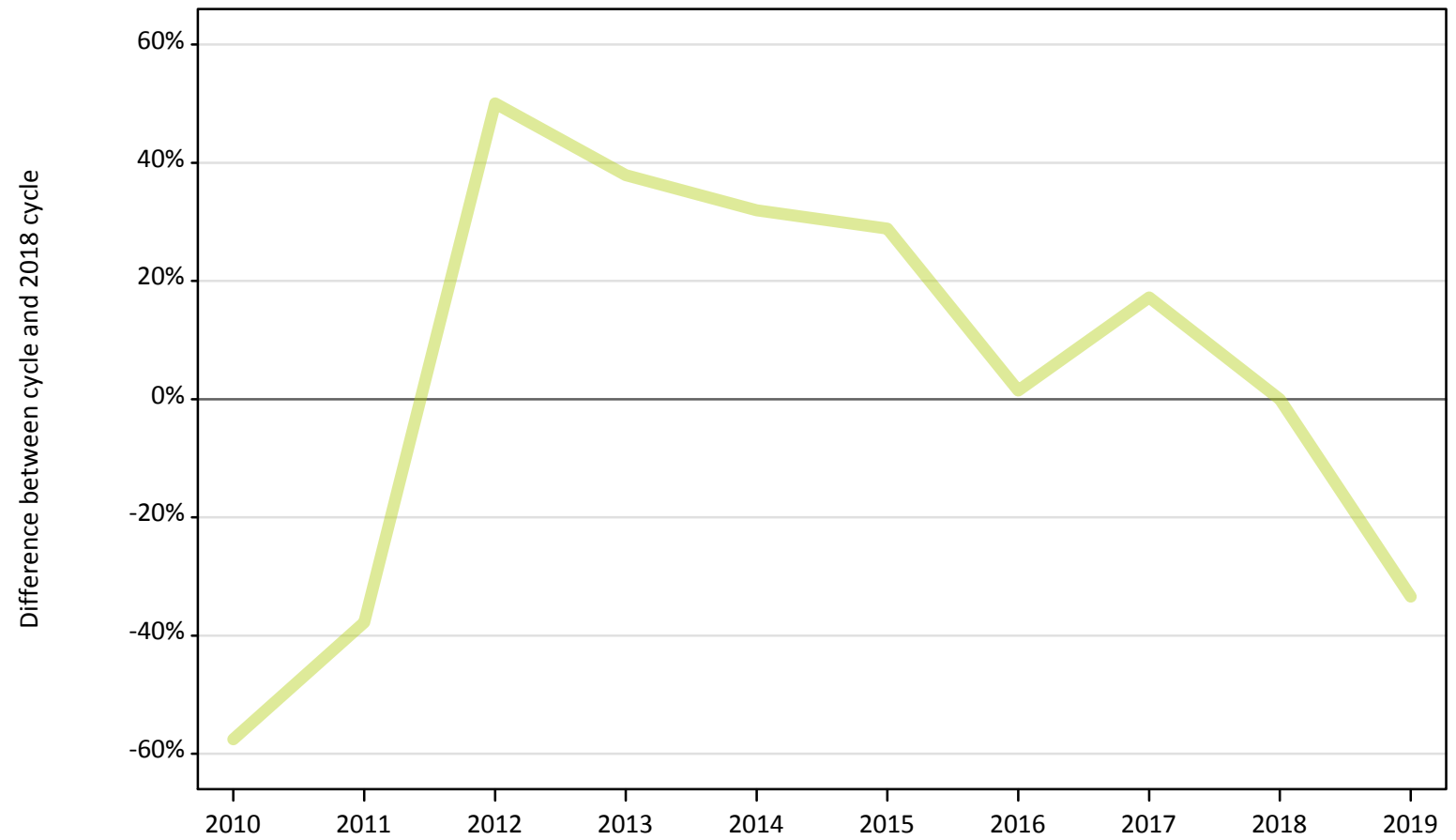
Applicant type	Status	2010	2011	2012	2013	2014	2015	2016	2017	2018	2019
Main scheme	Placed (Clearing)	-22%	-11%	-14%	-15%	-4%	-1%	2%	1%	0%	10%
	Placed (Firm)	-4%	-3%	-9%	-3%	-1%	2%	3%	2%	0%	-1%
	Placed (Insurance)	5%	13%	-14%	-7%	4%	12%	14%	9%	0%	0%
	Placed (Other)	1%	10%	-13%	4%	0%	-4%	6%	6%	0%	-2%

Note: The percentage change is not recorded in the above table for groups with fewer than 10 placed applicants in that cycle or in the 2018 cycle.

A.9 Main scheme applicants placed through adjustment: 28 days after A level results day

Placed through adjustment: difference between cycle and 2018 cycle

Placed (Adjustment)



Note: The percentage change is not plotted in the above chart for groups with fewer than 30 placed applicants in any one cycle.

A.10 Main scheme applicants placed through adjustment: 28 days after A level results day

Placed through adjustment: applicants at 28 days after A level results day

Applicant type	Status	2010	2011	2012	2013	2014	2015	2016	2017	2018	2019
Main scheme	Placed (Adjustment)	380	560	1,340	1,230	1,180	1,150	910	1,050	900	600

A.11 Main scheme applicants placed through adjustment: 28 days after A level results day

Placed through adjustment: difference between cycle and 2018 cycle

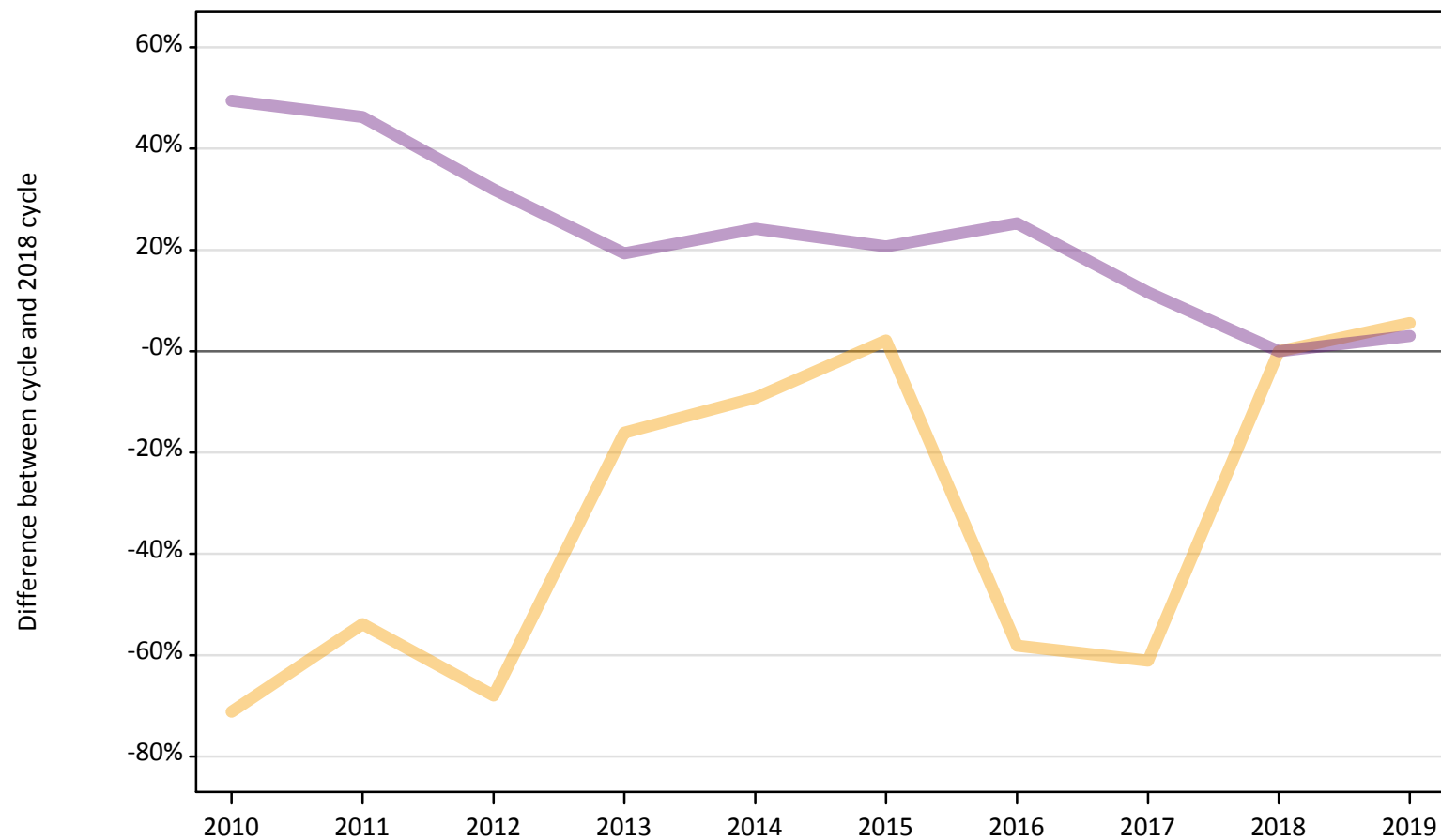
Applicant type	Status	2010	2011	2012	2013	2014	2015	2016	2017	2018	2019
Main scheme	Placed (Adjustment)	-58%	-38%	50%	38%	32%	29%	1%	17%	0%	-33%

Note: The percentage change is not recorded in the above table for groups with fewer than 10 placed applicants in that cycle or in the 2018 cycle.

A.12 Main scheme applicants not currently placed from all domiciles: 28 days after A level results day

Applicants in unplaced states: difference between cycle and 2018 cycle

— Holding offer
— Free to be placed in Clearing



Note: The percentage change is not plotted in the above chart for groups with fewer than 30 unplaced applicants in any one cycle.

A.13 Main scheme applicants not currently placed from all domiciles: 28 days after A level results day

Applicants in unplaced states: applicants at 28 days after A level results day

Applicant type	Status	2010	2011	2012	2013	2014	2015	2016	2017	2018	2019
Main scheme	Holding offer	5,750	9,200	6,390	16,730	18,100	20,360	8,350	7,760	19,930	21,050
	Free to be placed in Clearing	181,640	177,710	160,360	145,010	150,910	146,630	152,200	135,640	121,510	125,170

A.14 Main scheme applicants not currently placed from all domiciles: 28 days after A level results day

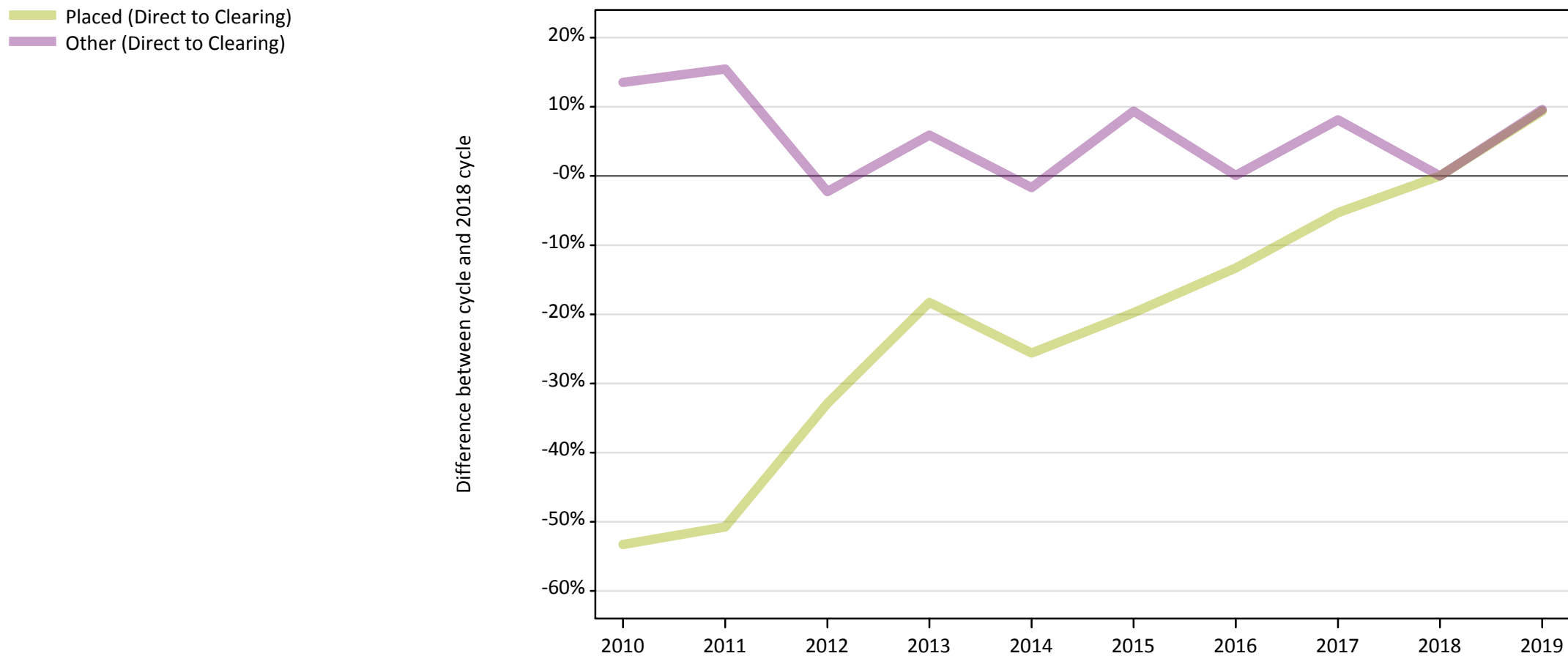
Applicants in unplaced states: difference between cycle and 2018 cycle

Applicant type	Status	2010	2011	2012	2013	2014	2015	2016	2017	2018	2019
Main scheme	Holding offer	-71%	-54%	-68%	-16%	-9%	2%	-58%	-61%	0%	6%
	Free to be placed in Clearing	49%	46%	32%	19%	24%	21%	25%	12%	0%	3%

Note: The percentage change is not recorded in the above table for groups with fewer than 10 unplaced applicants in that cycle or in the 2018 cycle.

A.15 Direct to Clearing applicants from all domiciles: 28 days after A level results day

Direct to Clearing: difference between cycle and 2018 cycle



Note: The percentage change is not plotted in the above chart for groups with fewer than 30 placed applicants in any one cycle.

A.16 Direct to Clearing applicants from all domiciles: 28 days after A level results day

Direct to Clearing 28 days after A level results day

Applicant type	Status	2010	2011	2012	2013	2014	2015	2016	2017	2018	2019
Direct to Clearing	Placed (Direct to Clearing)	6,730	7,100	9,670	11,770	10,720	11,560	12,490	13,640	14,410	15,760
	Other (Direct to Clearing)	8,380	8,530	7,220	7,820	7,260	8,080	7,390	7,980	7,380	8,090

A.17 Direct to Clearing applicants from all domiciles: 28 days after A level results day

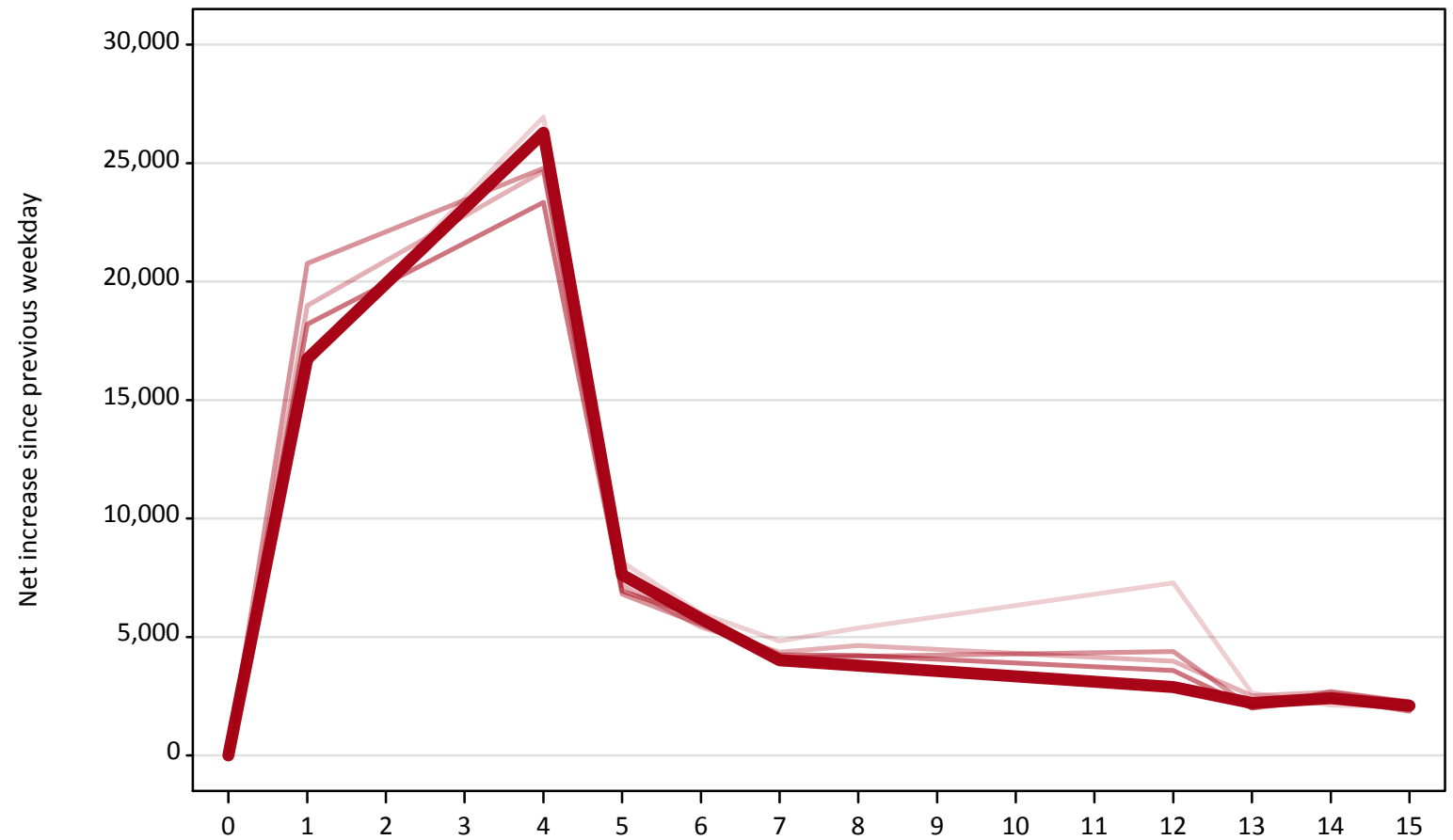
Direct to Clearing: difference between cycle and 2018 cycle

Applicant type	Status	2010	2011	2012	2013	2014	2015	2016	2017	2018	2019
Direct to Clearing	Placed (Direct to Clearing)	-53%	-51%	-33%	-18%	-26%	-20%	-13%	-5%	0%	9%
	Other (Direct to Clearing)	14%	15%	-2%	6%	-2%	9%	0%	8%	0%	10%

Note: The percentage change is not recorded in the above table for groups with fewer than 10 placed applicants in that cycle or in the 2018 cycle.

A.18 All Placed: Daily net change (from all domiciles)
Net increase since previous weekday (2019 cycle up to 28 days after A level results day)

- 2015
- 2016
- 2017
- 2018
- 2019**

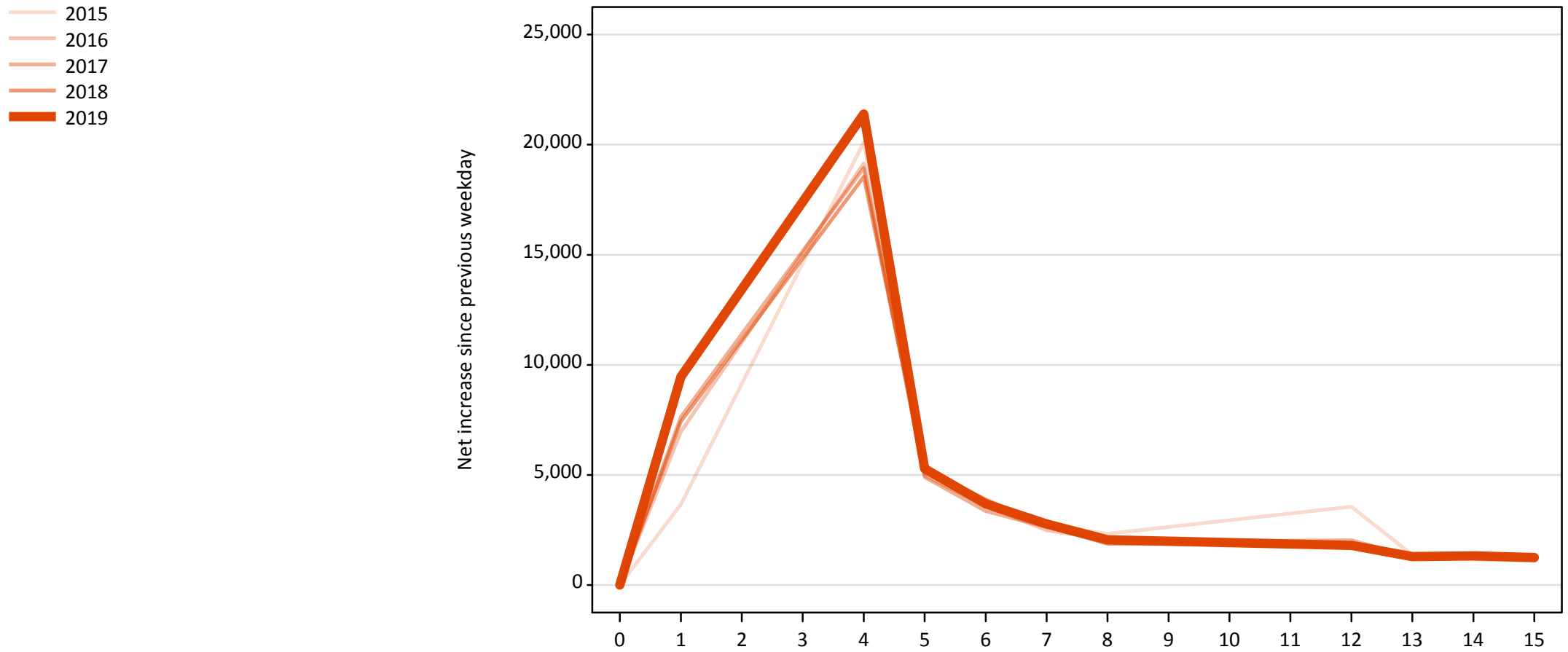


A.19 All Placed: Daily net change (from all domiciles)

Net increase since previous weekday (2019 cycle up to 28 days after A level results day)

Applicant status, days since A level results day		2015	2016	2017	2018	2019
All Placed	0	0	0	0	0	0
	1	16,680	18,990	20,770	18,200	16,740
	4	26,940	24,670	24,790	23,340	26,280
	5	8,160	7,170	6,810	6,940	7,620
	6	6,000	5,410	5,510	5,820	5,770
	7	4,830	4,350	4,140	4,240	4,010
	8	5,370	4,640	4,190	4,220	3,790
	12	7,280	3,980	4,380	3,590	2,880
	13	2,630	2,510	2,010	2,000	2,210
	14	2,120	2,660	2,700	2,370	2,420
	15	2,030	2,250	2,260	1,870	2,100

A.20 Placed through Clearing only: Daily net change (from all domiciles)
Net increase since previous weekday (2019 cycle up to 28 days after A level results day)



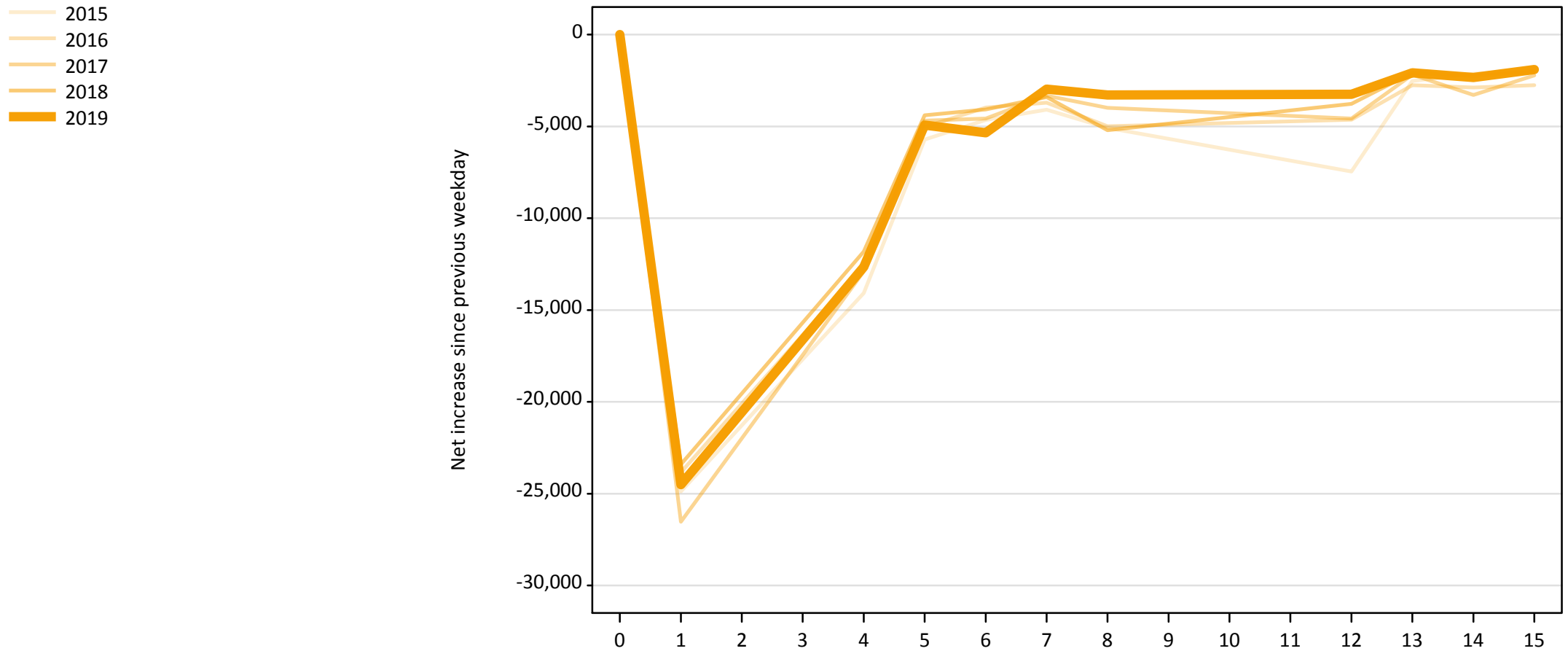
A.21 Placed through Clearing only: Daily net change (from all domiciles)

Net increase since previous weekday (2019 cycle up to 28 days after A level results day)

Applicant status, days since A level results day		2015	2016	2017	2018	2019
Placed through Clearing only	0	0	0	0	0	0
	1	3,660	6,970	7,640	7,440	9,460
	4	20,110	19,140	18,940	18,550	21,390
	5	5,290	4,960	4,910	5,250	5,280
	6	3,560	3,590	3,360	3,890	3,680
	7	2,680	2,480	2,640	2,660	2,770
	8	2,330	2,050	1,950	1,880	2,050
	12	3,550	1,740	2,030	1,840	1,800
	13	1,370	1,350	1,270	1,190	1,290
	14	1,160	1,420	1,370	1,440	1,330
	15	1,100	1,210	1,320	1,130	1,250

A.22 Holding Offer: Daily net change (from all domiciles)

Net increase since previous weekday (2019 cycle up to 28 days after A level results day)



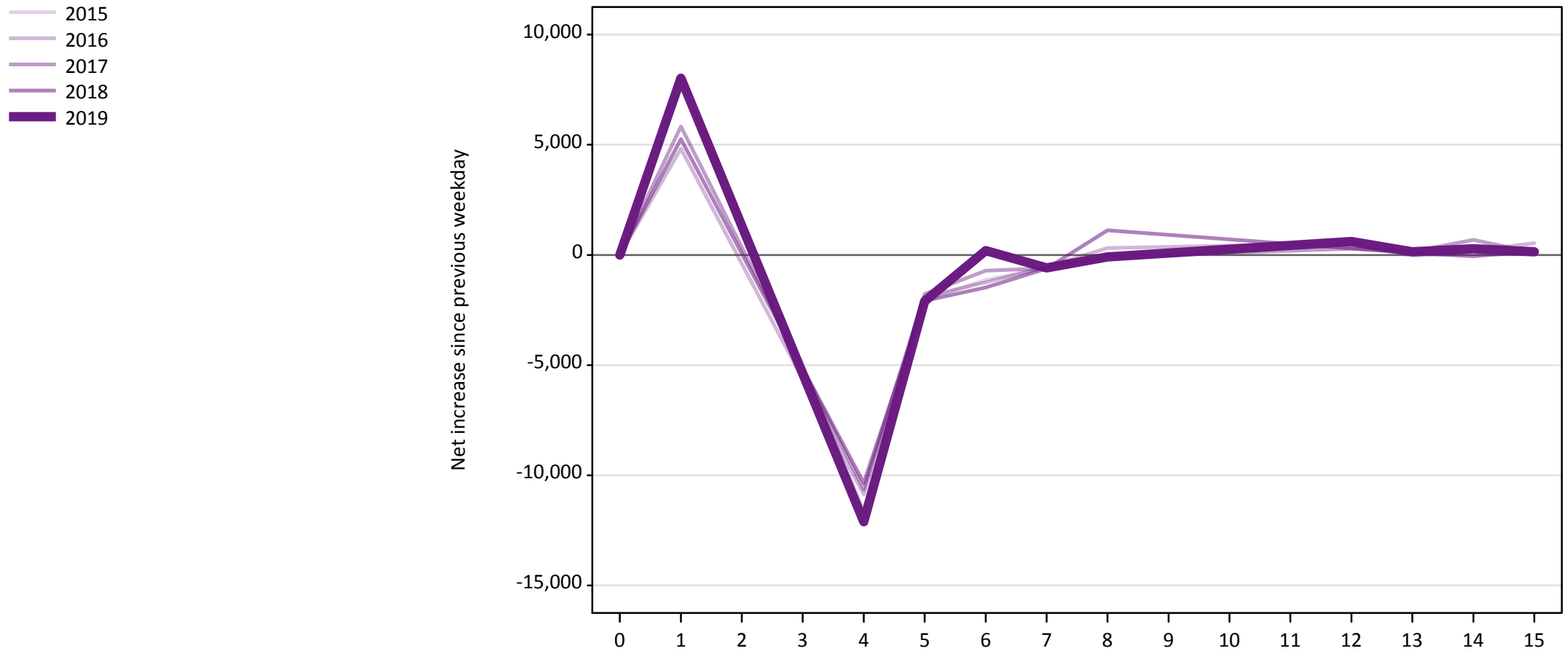
A.23 Holding Offer: Daily net change (from all domiciles)

Net increase since previous weekday (2019 cycle up to 28 days after A level results day)

Applicant status, days since A level results day		2015	2016	2017	2018	2019
Holding Offer	0	0	0	0	0	0
	1	-24,880	-23,840	-26,530	-23,410	-24,510
	4	-14,080	-12,600	-12,900	-11,810	-12,650
	5	-5,720	-5,030	-4,680	-4,390	-4,930
	6	-4,650	-3,970	-4,580	-4,080	-5,340
	7	-4,090	-3,700	-3,330	-3,400	-2,970
	8	-5,080	-4,990	-3,990	-5,210	-3,290
	12	-7,460	-4,640	-4,580	-3,770	-3,260
	13	-2,520	-2,760	-2,180	-2,080	-2,080
	14	-2,130	-2,880	-3,280	-2,250	-2,340
	15	-1,980	-2,760	-2,230	-2,020	-1,900

A.24 Free to be placed in Clearing: Daily net change (from all domiciles)

Net increase since previous weekday (2019 cycle up to 28 days after A level results day)



A.25 Free to be placed in Clearing: Daily net change (from all domiciles)

Net increase since previous weekday (2019 cycle up to 28 days after A level results day)

Applicant status, days since A level results day		2015	2016	2017	2018	2019
Free to be placed in Clearing	0	0	0	0	0	0
	1	8,010	4,820	5,830	5,260	8,020
	4	-11,570	-10,870	-10,650	-10,350	-12,110
	5	-2,040	-1,900	-1,780	-2,080	-2,110
	6	-1,130	-1,250	-710	-1,480	200
	7	-570	-540	-610	-620	-590
	8	-80	310	-80	1,120	-90
	12	430	530	280	290	610
	13	-40	120	150	90	140
	14	80	200	680	-60	280
	15	60	530	100	160	140