

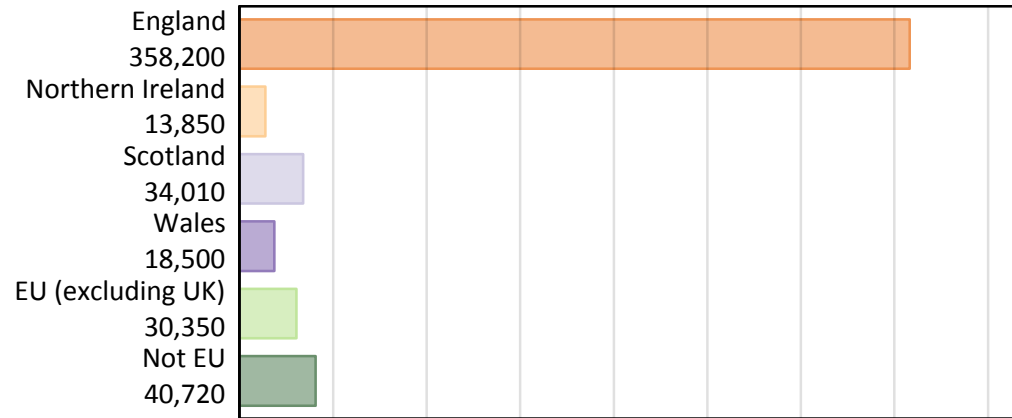
Daily Clearing Analysis: Country

Analysis at 00:05 on Thursday 12 September 2019 (28 days after A level results day)

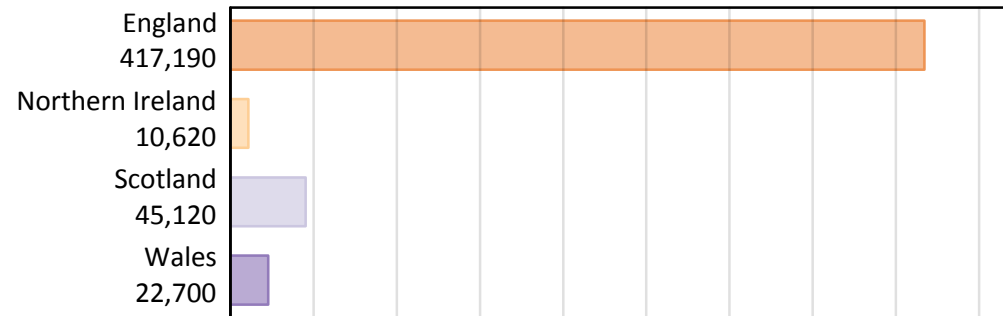
B.1 Placed applicants by country of provider and domicile, 2019 cycle

Domicile of applicant	Country of provider				
	England	Northern Ireland	Scotland	Wales	UK
England	343,760	310	4,310	9,820	358,200
Northern Ireland	3,260	9,600	860	130	13,850
Scotland	1,530	20	32,420	40	34,010
Wales	7,900	10	130	10,460	18,500
EU (excluding UK)	25,030	410	3,920	990	30,350
Not EU	35,720	270	3,480	1,250	40,720
All	417,190	10,620	45,120	22,700	495,620

B.2 Placed applicants by domicile group



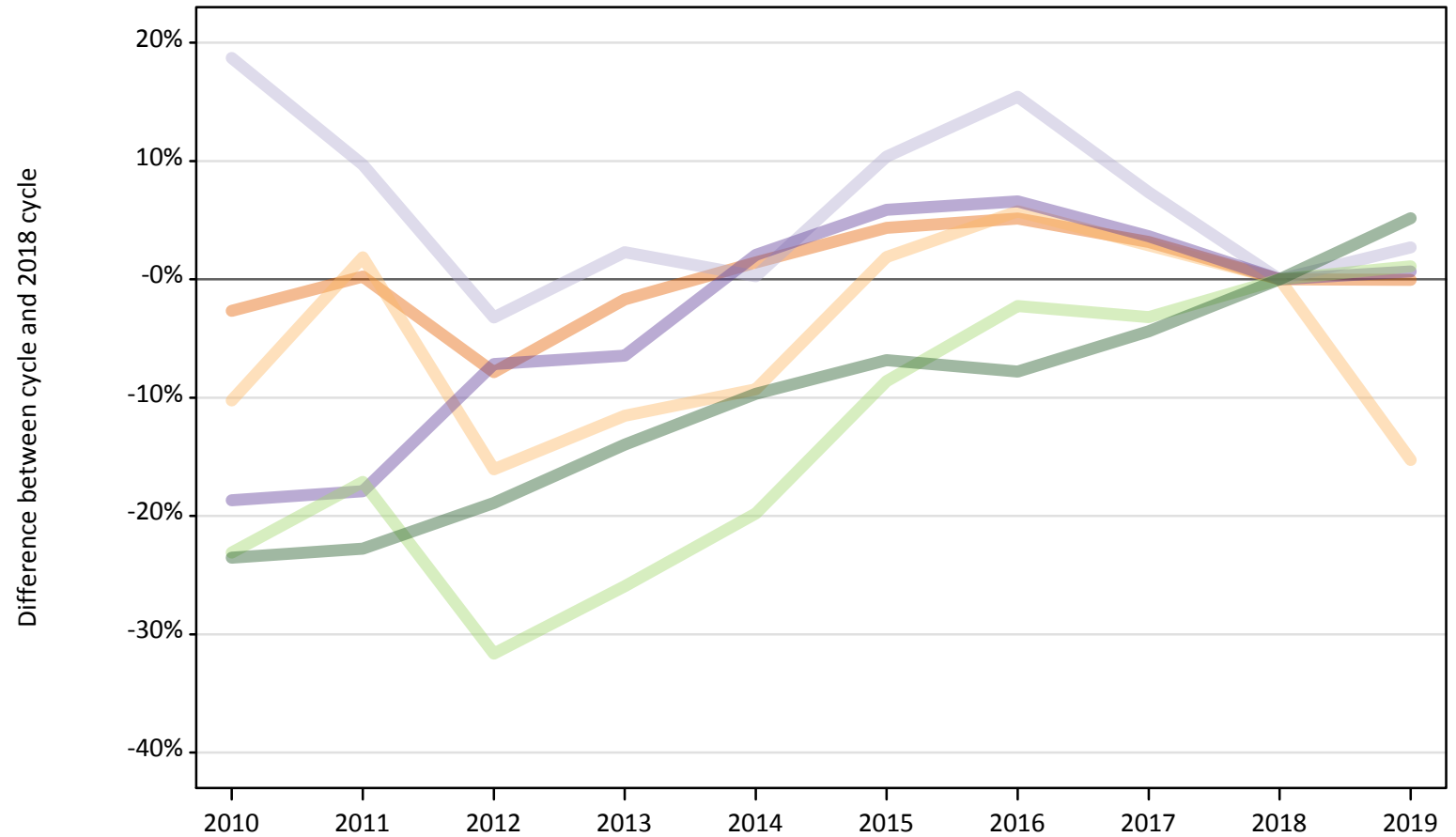
B.3 Placed applicants by country of provider



B.4 Placed applicants at 28 days after A level results day: providers in England

Selected applicant domiciles: difference between cycle and 2018 cycle (at 28 days after A level results day)

- England
- Northern Ireland
- Scotland
- Wales
- EU (excluding UK)
- Not EU



Note: The percentage change is not plotted in the above chart for groups with fewer than 30 placed applicants in any one cycle.

B.5 Placed applicants at 28 days after A level results day: providers in England

Placed applicants by domicile (at 28 days after A level results day)

Domicile of applicant	2010	2011	2012	2013	2014	2015	2016	2017	2018	2019
England	334,790	344,690	316,890	338,100	348,820	358,850	361,610	354,810	343,920	343,760
Northern Ireland	3,450	3,920	3,230	3,400	3,490	3,920	4,070	3,950	3,840	3,260
Scotland	1,760	1,630	1,440	1,520	1,490	1,640	1,710	1,590	1,490	1,530
Wales	6,380	6,440	7,280	7,340	8,010	8,310	8,360	8,130	7,850	7,900
EU (excluding UK)	19,040	20,520	16,930	18,340	19,860	22,630	24,200	23,970	24,760	25,030
Not EU	25,970	26,240	27,550	29,220	30,680	31,650	31,320	32,480	33,970	35,720

B.6 Placed applicants at 28 days after A level results day: providers in England

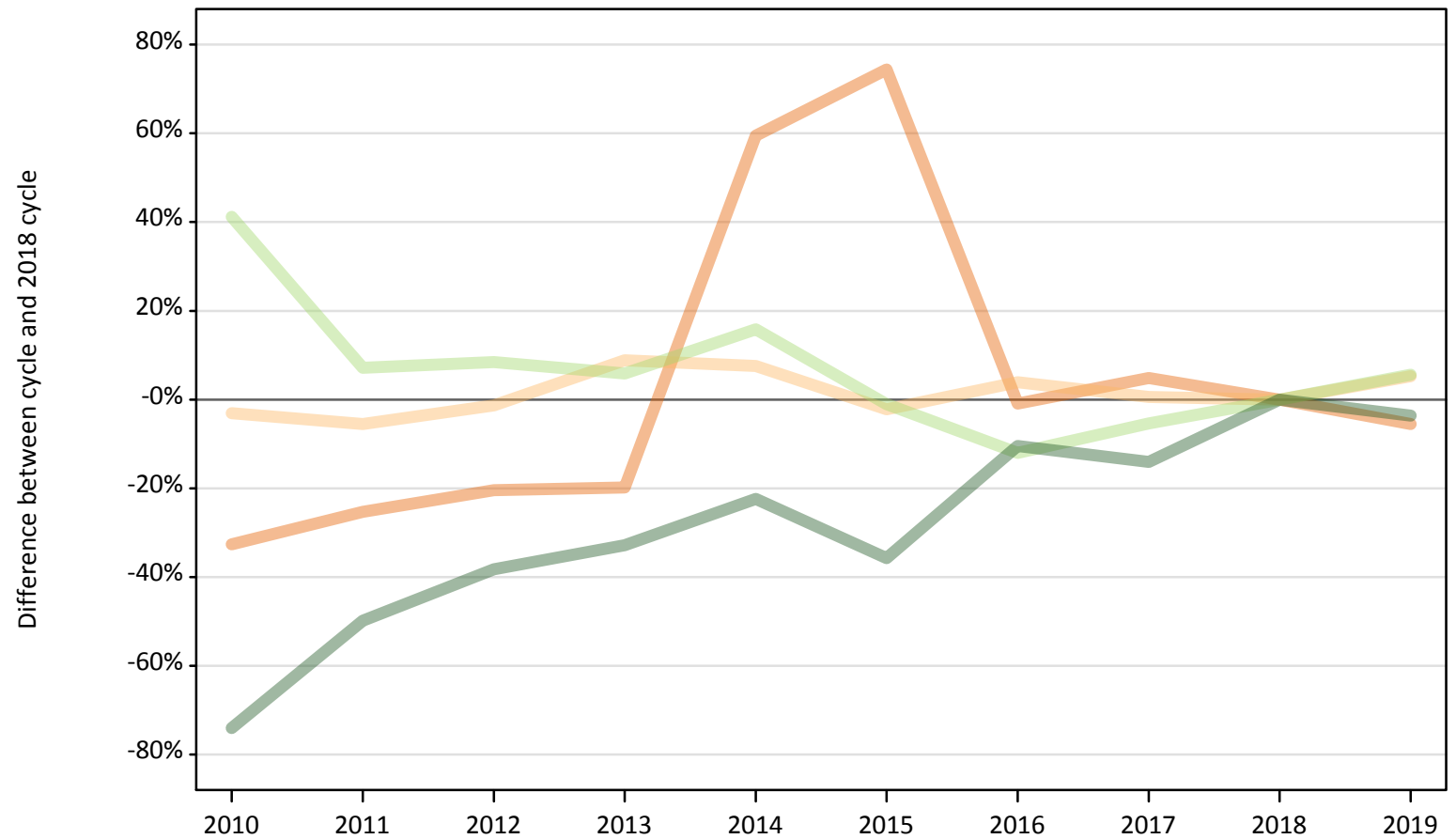
Selected applicant domiciles: difference between cycle and 2018 cycle (at 28 days after A level results day)

Domicile of applicant	2010	2011	2012	2013	2014	2015	2016	2017	2018	2019
England	-3%	0%	-8%	-2%	1%	4%	5%	3%	0%	-0%
Northern Ireland	-10%	2%	-16%	-12%	-9%	2%	6%	3%	0%	-15%
Scotland	19%	10%	-3%	2%	0%	10%	15%	7%	0%	3%
Wales	-19%	-18%	-7%	-6%	2%	6%	7%	4%	0%	1%
EU (excluding UK)	-23%	-17%	-32%	-26%	-20%	-9%	-2%	-3%	0%	1%
Not EU	-24%	-23%	-19%	-14%	-10%	-7%	-8%	-4%	0%	5%

Note: The percentage change is not recorded in the above table for groups with fewer than 10 placed applicants in that cycle or in the 2018 cycle.

B.7 Placed applicants at 28 days after A level results day: providers in Northern Ireland
Selected applicant domiciles: difference between cycle and 2018 cycle (at 28 days after A level results day)

- England
- Northern Ireland
- Scotland
- Wales
- EU (excluding UK)
- Not EU



Note: The percentage change is not plotted in the above chart for groups with fewer than 30 placed applicants in any one cycle.

B.8 Placed applicants at 28 days after A level results day: providers in Northern Ireland

Placed applicants by domicile (at 28 days after A level results day)

Domicile of applicant	2010	2011	2012	2013	2014	2015	2016	2017	2018	2019
England	220	250	260	260	520	570	330	340	330	310
Northern Ireland	8,840	8,610	9,000	9,920	9,810	8,920	9,470	9,170	9,120	9,600
Scotland	20	20	30	20	20	20	20	30	30	20
Wales	10	10	0	10	10	10	10	20	10	10
EU (excluding UK)	550	420	420	410	450	390	340	370	390	410
Not EU	70	140	170	190	220	180	250	240	280	270

B.9 Placed applicants at 28 days after A level results day: providers in Northern Ireland

Selected applicant domiciles: difference between cycle and 2018 cycle (at 28 days after A level results day)

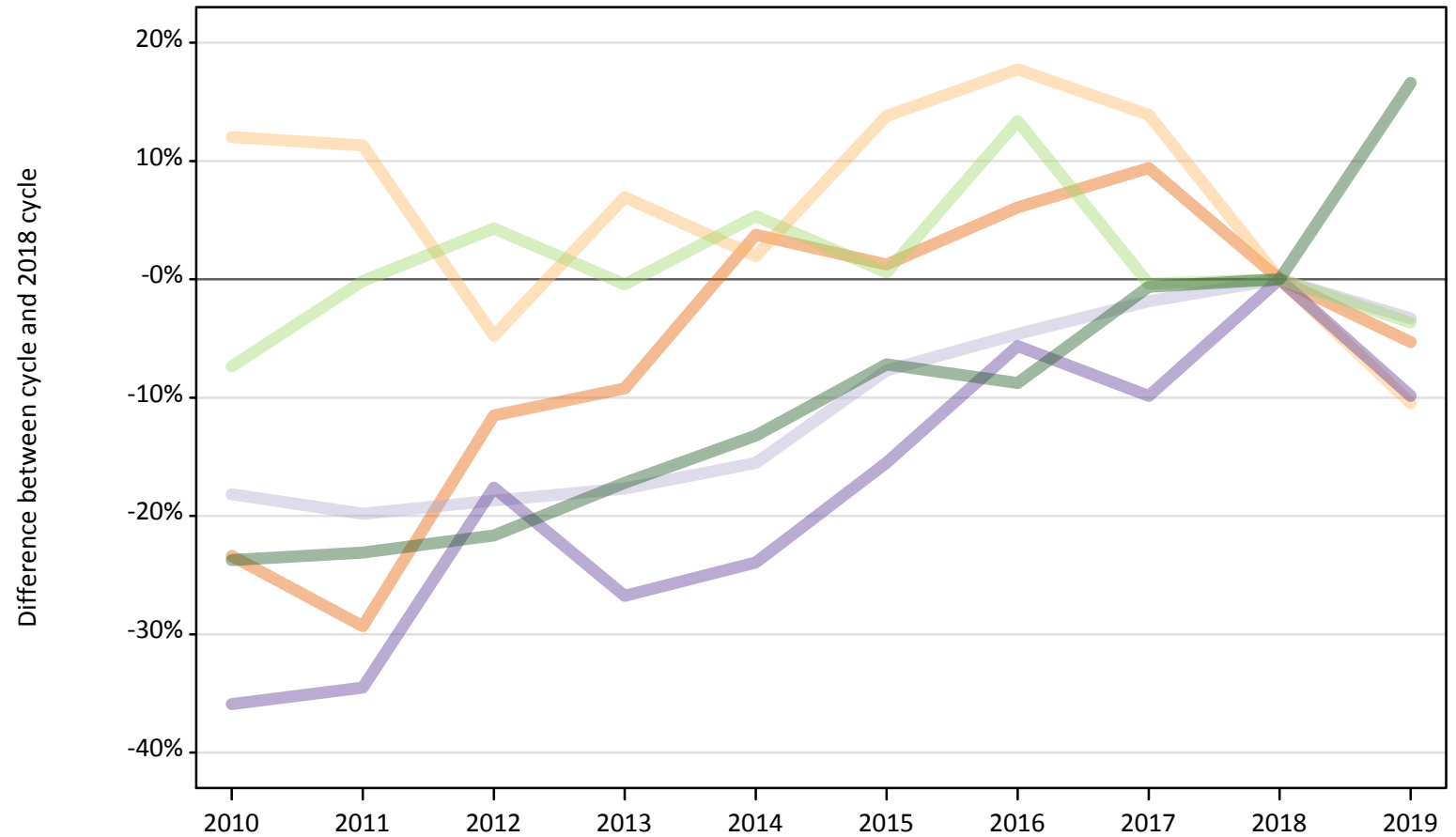
Domicile of applicant	2010	2011	2012	2013	2014	2015	2016	2017	2018	2019
England	-33%	-25%	-20%	-20%	59%	74%	-1%	5%	0%	-5%
Northern Ireland	-3%	-6%	-1%	9%	8%	-2%	4%	1%	0%	5%
Scotland	-18%	-29%	-7%	-43%	-39%	-21%	-32%	11%	0%	-36%
Wales						30%	20%	50%	0%	20%
EU (excluding UK)	41%	7%	8%	6%	16%	-1%	-12%	-5%	0%	6%
Not EU	-74%	-50%	-38%	-33%	-22%	-36%	-10%	-14%	0%	-4%

Note: The percentage change is not recorded in the above table for groups with fewer than 10 placed applicants in that cycle or in the 2018 cycle.

B.10 Placed applicants at 28 days after A level results day: providers in Scotland

Selected applicant domiciles: difference between cycle and 2018 cycle (at 28 days after A level results day)

- England
- Northern Ireland
- Scotland
- Wales
- EU (excluding UK)
- Not EU



Note: The percentage change is not plotted in the above chart for groups with fewer than 30 placed applicants in any one cycle.

B.11 Placed applicants at 28 days after A level results day: providers in Scotland

Placed applicants by domicile (at 28 days after A level results day)

Domicile of applicant	2010	2011	2012	2013	2014	2015	2016	2017	2018	2019
England	3,490	3,210	4,020	4,130	4,720	4,610	4,820	4,980	4,550	4,310
Northern Ireland	1,080	1,070	920	1,030	980	1,100	1,140	1,100	960	860
Scotland	27,430	26,880	27,260	27,600	28,330	30,950	31,980	32,910	33,530	32,420
Wales	90	90	120	100	110	120	130	130	140	130
EU (excluding UK)	3,770	4,060	4,240	4,050	4,280	4,090	4,610	4,050	4,060	3,920
Not EU	2,280	2,300	2,340	2,470	2,590	2,770	2,730	2,970	2,990	3,480

B.12 Placed applicants at 28 days after A level results day: providers in Scotland

Selected applicant domiciles: difference between cycle and 2018 cycle (at 28 days after A level results day)

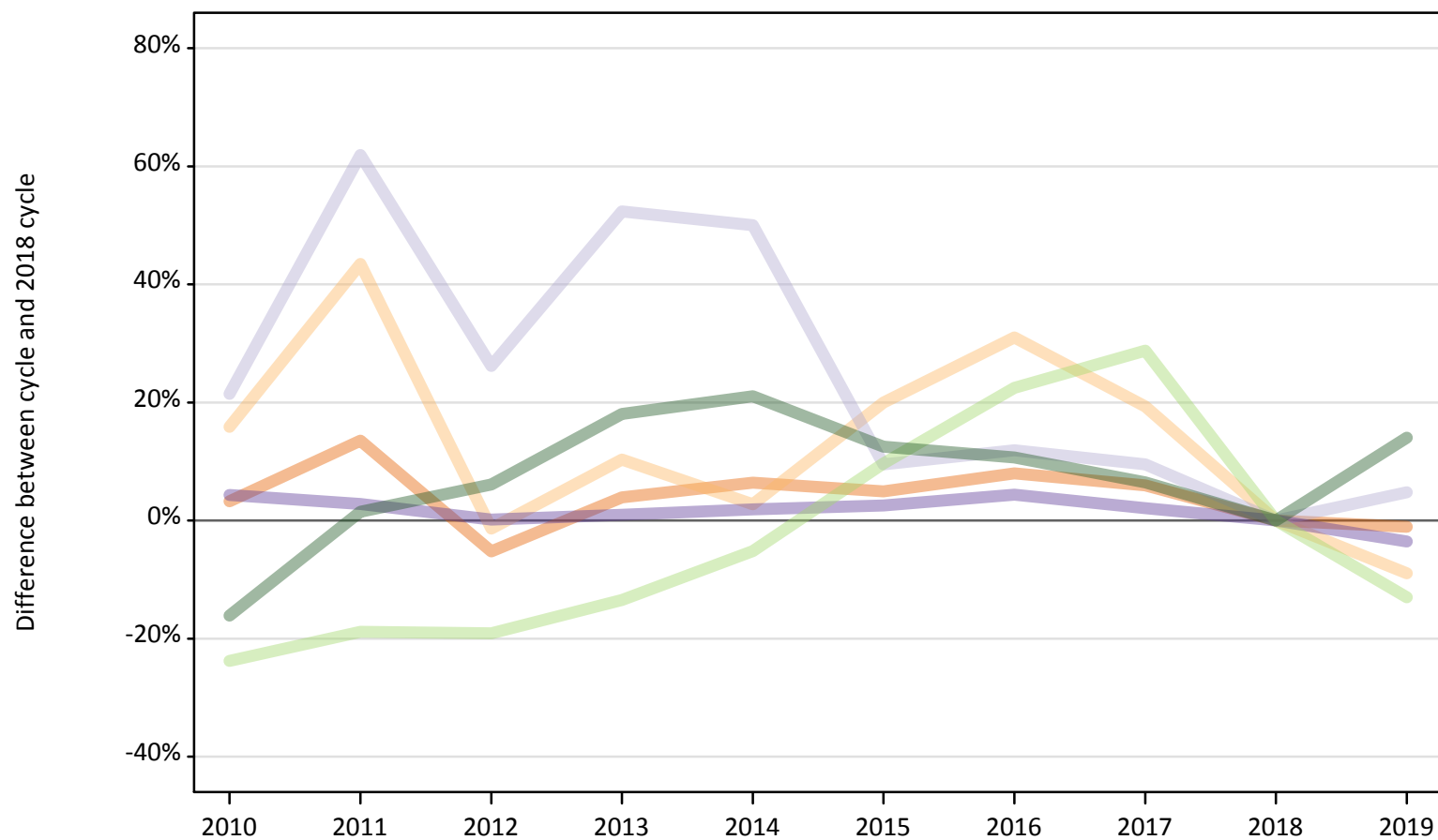
Domicile of applicant	2010	2011	2012	2013	2014	2015	2016	2017	2018	2019
England	-23%	-29%	-12%	-9%	4%	1%	6%	9%	0%	-5%
Northern Ireland	12%	11%	-5%	7%	2%	14%	18%	14%	0%	-10%
Scotland	-18%	-20%	-19%	-18%	-16%	-8%	-5%	-2%	0%	-3%
Wales	-36%	-35%	-18%	-27%	-24%	-15%	-6%	-10%	0%	-10%
EU (excluding UK)	-7%	-0%	4%	-0%	5%	1%	13%	-0%	0%	-4%
Not EU	-24%	-23%	-22%	-17%	-13%	-7%	-9%	-1%	0%	17%

Note: The percentage change is not recorded in the above table for groups with fewer than 10 placed applicants in that cycle or in the 2018 cycle.

B.13 Placed applicants at 28 days after A level results day: providers in Wales

Selected applicant domiciles: difference between cycle and 2018 cycle (at 28 days after A level results day)

- England
- Northern Ireland
- Scotland
- Wales
- EU (excluding UK)
- Not EU



Note: The percentage change is not plotted in the above chart for groups with fewer than 30 placed applicants in any one cycle.

B.14 Placed applicants at 28 days after A level results day: providers in Wales

Placed applicants by domicile (at 28 days after A level results day)

Domicile of applicant	2010	2011	2012	2013	2014	2015	2016	2017	2018	2019
England	10,250	11,270	9,410	10,320	10,570	10,420	10,720	10,520	9,930	9,820
Northern Ireland	170	210	140	160	150	170	190	170	150	130
Scotland	50	70	50	60	60	50	50	50	40	40
Wales	11,320	11,150	10,870	10,950	11,050	11,120	11,330	11,080	10,850	10,460
EU (excluding UK)	870	920	920	980	1,080	1,250	1,390	1,460	1,140	990
Not EU	920	1,110	1,160	1,300	1,330	1,230	1,210	1,170	1,100	1,250

B.15 Placed applicants at 28 days after A level results day: providers in Wales

Selected applicant domiciles: difference between cycle and 2018 cycle (at 28 days after A level results day)

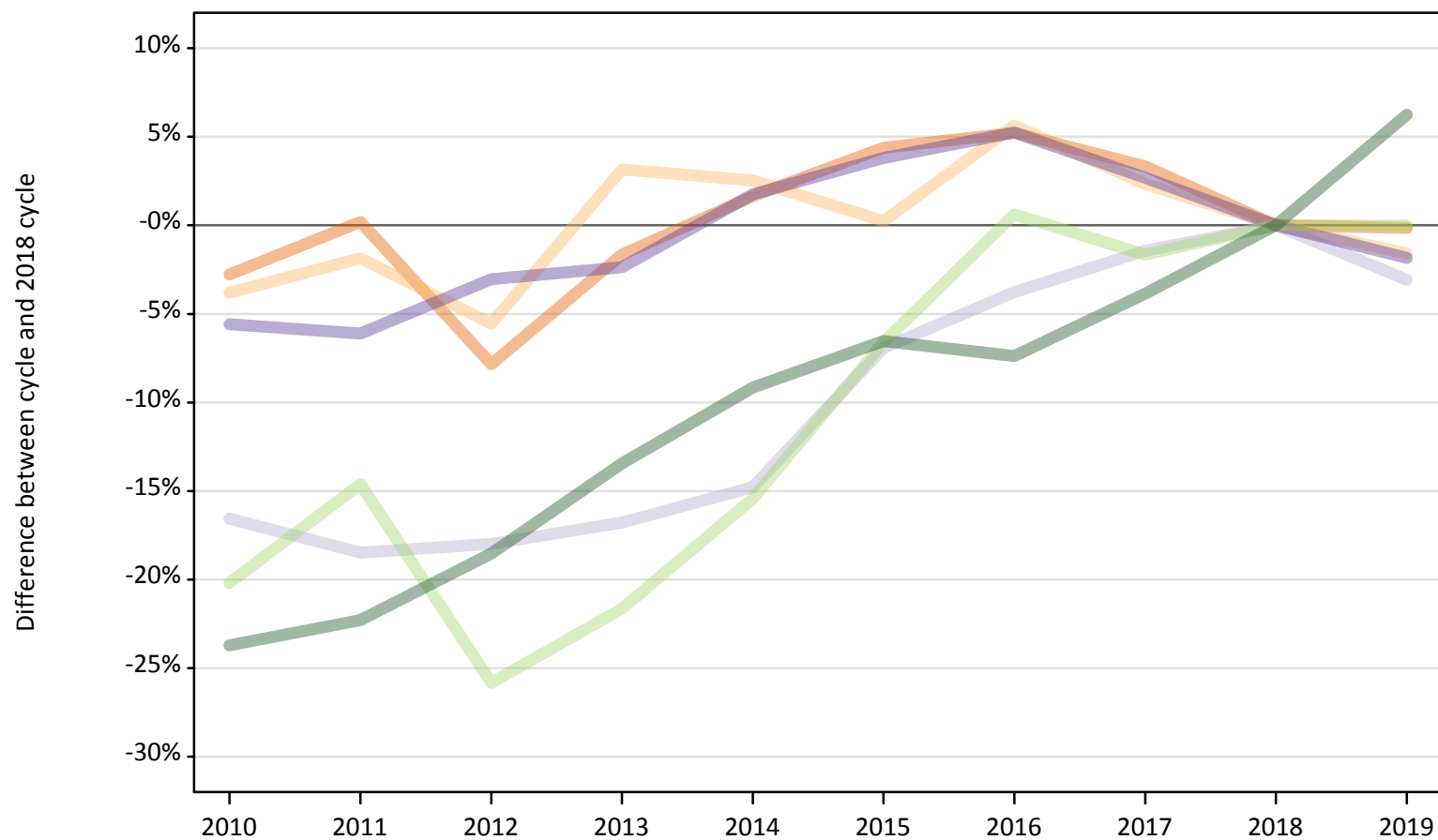
Domicile of applicant	2010	2011	2012	2013	2014	2015	2016	2017	2018	2019
England	3%	14%	-5%	4%	6%	5%	8%	6%	0%	-1%
Northern Ireland	16%	43%	-1%	10%	3%	20%	31%	19%	0%	-9%
Scotland	21%	62%	26%	52%	50%	10%	12%	10%	0%	5%
Wales	4%	3%	0%	1%	2%	3%	4%	2%	0%	-4%
EU (excluding UK)	-24%	-19%	-19%	-13%	-5%	10%	22%	29%	0%	-13%
Not EU	-16%	1%	6%	18%	21%	12%	11%	6%	0%	14%

Note: The percentage change is not recorded in the above table for groups with fewer than 10 placed applicants in that cycle or in the 2018 cycle.

B.16 Placed applicants at 28 days after A level results day: providers in the UK

Selected applicant domiciles: difference between cycle and 2018 cycle (at 28 days after A level results day)

- England
- Northern Ireland
- Scotland
- Wales
- EU (excluding UK)
- Not EU



Note: The percentage change is not plotted in the above chart for groups with fewer than 30 placed applicants in any one cycle.

B.17 Placed applicants at 28 days after A level results day: providers in the UK

Placed applicants by domicile (at 28 days after A level results day)

Domicile of applicant	2010	2011	2012	2013	2014	2015	2016	2017	2018	2019
England	348,750	359,420	330,580	352,810	364,620	374,440	377,480	370,650	358,730	358,200
Northern Ireland	13,540	13,810	13,290	14,520	14,430	14,110	14,860	14,400	14,070	13,850
Scotland	29,270	28,600	28,770	29,200	29,900	32,660	33,760	34,580	35,080	34,010
Wales	17,790	17,690	18,270	18,400	19,180	19,560	19,830	19,350	18,850	18,500
EU (excluding UK)	24,230	25,920	22,510	23,780	25,670	28,350	30,540	29,850	30,350	30,350
Not EU	29,240	29,780	31,230	33,180	34,820	35,830	35,500	36,850	38,330	40,720

B.18 Placed applicants at 28 days after A level results day: providers in the UK

Selected applicant domiciles: difference between cycle and 2018 cycle (at 28 days after A level results day)

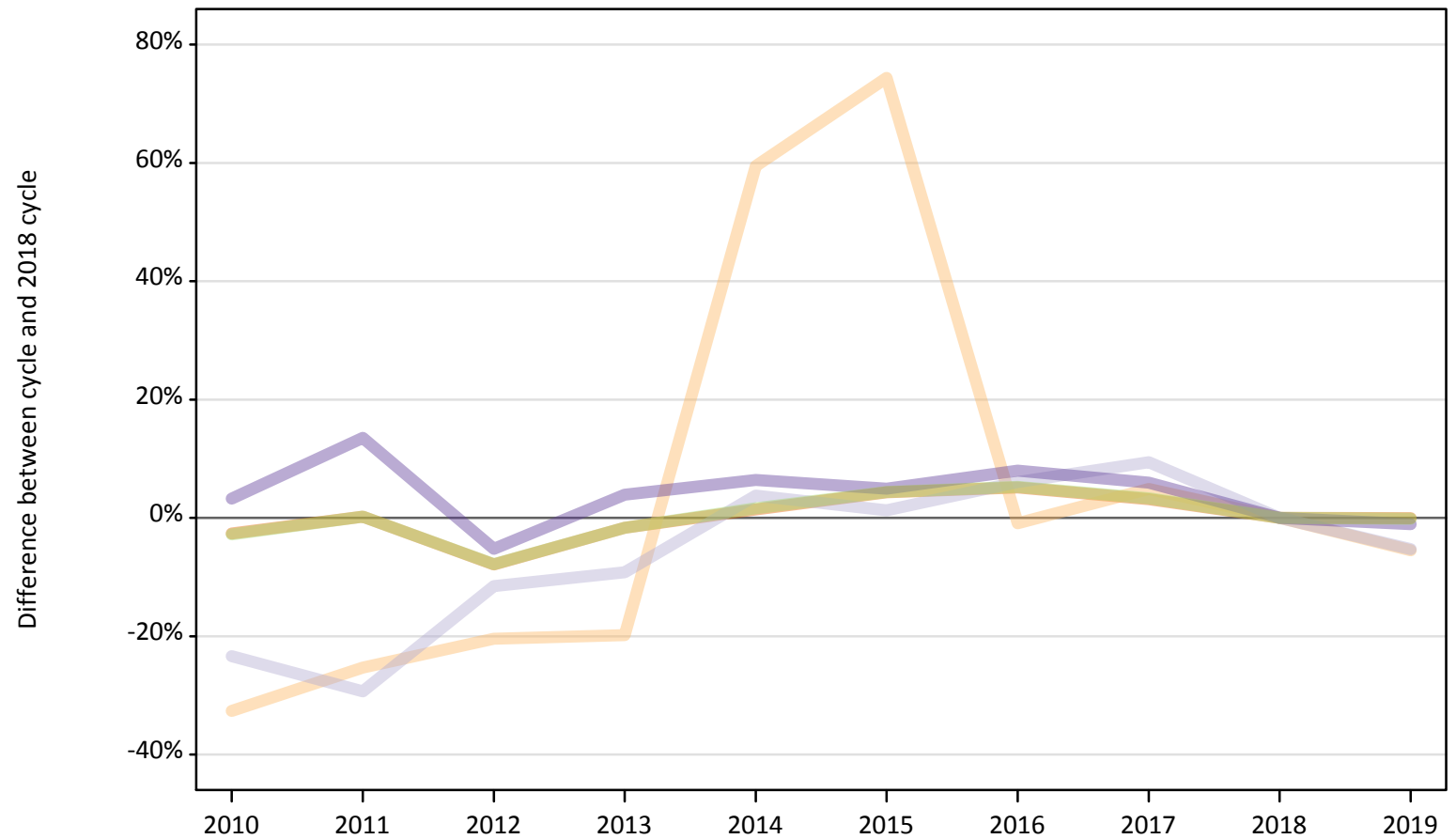
Domicile of applicant	2010	2011	2012	2013	2014	2015	2016	2017	2018	2019
England	-3%	0%	-8%	-2%	2%	4%	5%	3%	0%	-0%
Northern Ireland	-4%	-2%	-6%	3%	3%	0%	6%	2%	0%	-2%
Scotland	-17%	-18%	-18%	-17%	-15%	-7%	-4%	-1%	0%	-3%
Wales	-6%	-6%	-3%	-2%	2%	4%	5%	3%	0%	-2%
EU (excluding UK)	-20%	-15%	-26%	-22%	-15%	-7%	1%	-2%	0%	-0%
Not EU	-24%	-22%	-19%	-13%	-9%	-7%	-7%	-4%	0%	6%

Note: The percentage change is not recorded in the above table for groups with fewer than 10 placed applicants in that cycle or in the 2018 cycle.

B.19 Placed applicants at 28 days after A level results day: domiciled in England

Selected provider countries: difference between cycle and 2018 cycle (at 28 days after A level results day)

- England
- Northern Ireland
- Scotland
- Wales
- UK



Note: The percentage change is not plotted in the above chart for groups with fewer than 30 placed applicants in any one cycle.

B.20 Placed applicants at 28 days after A level results day: domiciled in England

Placed applicants by provider country (at 28 days after A level results day)

Country of provider	2010	2011	2012	2013	2014	2015	2016	2017	2018	2019
England	334,790	344,690	316,890	338,100	348,820	358,850	361,610	354,810	343,920	343,760
Northern Ireland	220	250	260	260	520	570	330	340	330	310
Scotland	3,490	3,210	4,020	4,130	4,720	4,610	4,820	4,980	4,550	4,310
Wales	10,250	11,270	9,410	10,320	10,570	10,420	10,720	10,520	9,930	9,820
UK	348,750	359,420	330,580	352,810	364,620	374,440	377,480	370,650	358,730	358,200

B.21 Placed applicants at 28 days after A level results day: domiciled in England

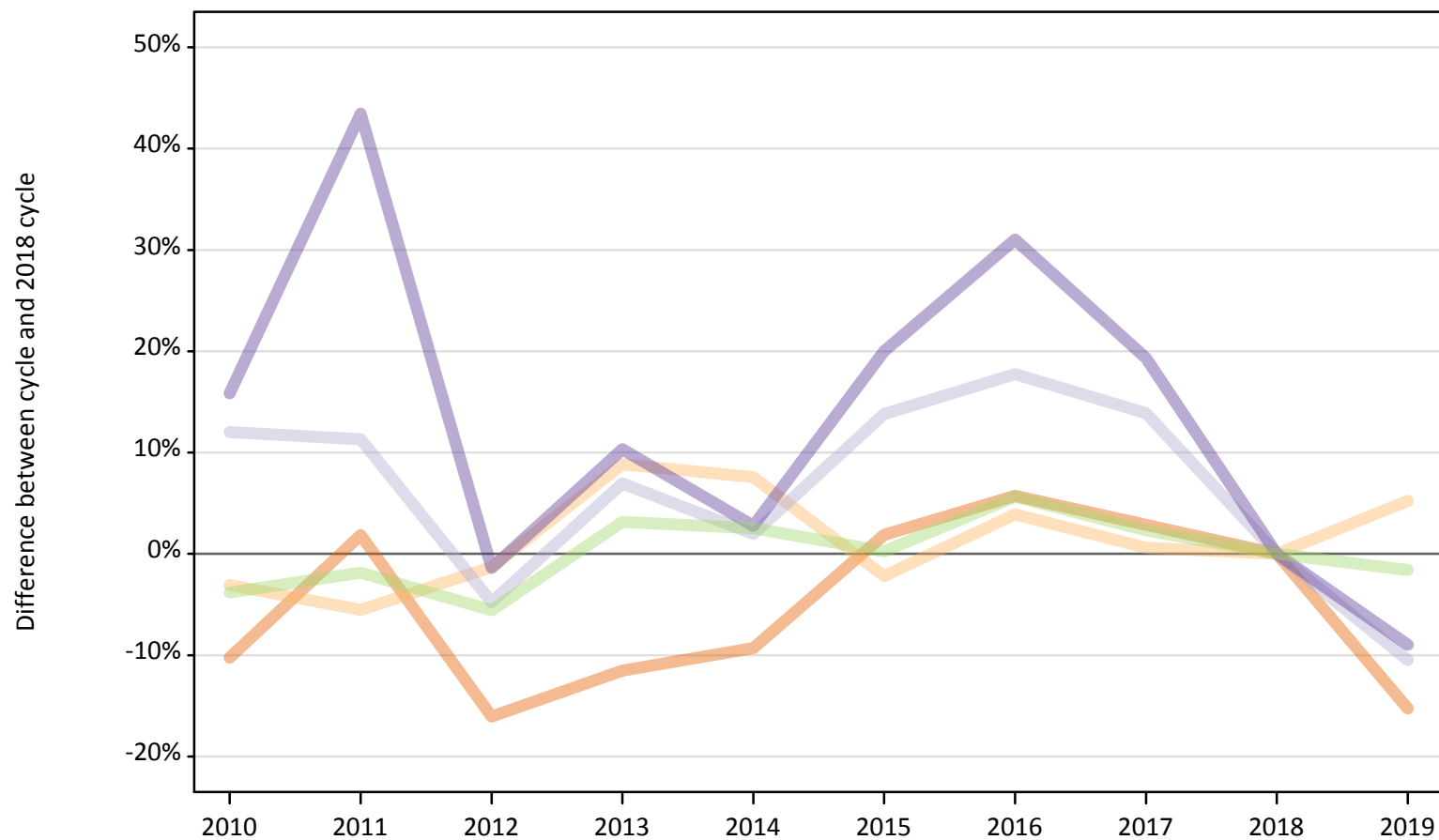
Selected provider countries: difference between cycle and 2018 cycle (at 28 days after A level results day)

Country of provider	2010	2011	2012	2013	2014	2015	2016	2017	2018	2019
England	-3%	0%	-8%	-2%	1%	4%	5%	3%	0%	-0%
Northern Ireland	-33%	-25%	-20%	-20%	59%	74%	-1%	5%	0%	-5%
Scotland	-23%	-29%	-12%	-9%	4%	1%	6%	9%	0%	-5%
Wales	3%	14%	-5%	4%	6%	5%	8%	6%	0%	-1%
UK	-3%	0%	-8%	-2%	2%	4%	5%	3%	0%	-0%

Note: The percentage change is not recorded in the above table for groups with fewer than 10 placed applicants in that cycle or in the 2018 cycle.

B.22 Placed applicants at 28 days after A level results day: domiciled in Northern Ireland
Selected provider countries: difference between cycle and 2018 cycle (at 28 days after A level results day)

- England
- Northern Ireland
- Scotland
- Wales
- UK



Note: The percentage change is not plotted in the above chart for groups with fewer than 30 placed applicants in any one cycle.

B.23 Placed applicants at 28 days after A level results day: domiciled in Northern Ireland

Placed applicants by provider country (at 28 days after A level results day)

Country of provider	2010	2011	2012	2013	2014	2015	2016	2017	2018	2019
England	3,450	3,920	3,230	3,400	3,490	3,920	4,070	3,950	3,840	3,260
Northern Ireland	8,840	8,610	9,000	9,920	9,810	8,920	9,470	9,170	9,120	9,600
Scotland	1,080	1,070	920	1,030	980	1,100	1,140	1,100	960	860
Wales	170	210	140	160	150	170	190	170	150	130
UK	13,540	13,810	13,290	14,520	14,430	14,110	14,860	14,400	14,070	13,850

B.24 Placed applicants at 28 days after A level results day: domiciled in Northern Ireland

Selected provider countries: difference between cycle and 2018 cycle (at 28 days after A level results day)

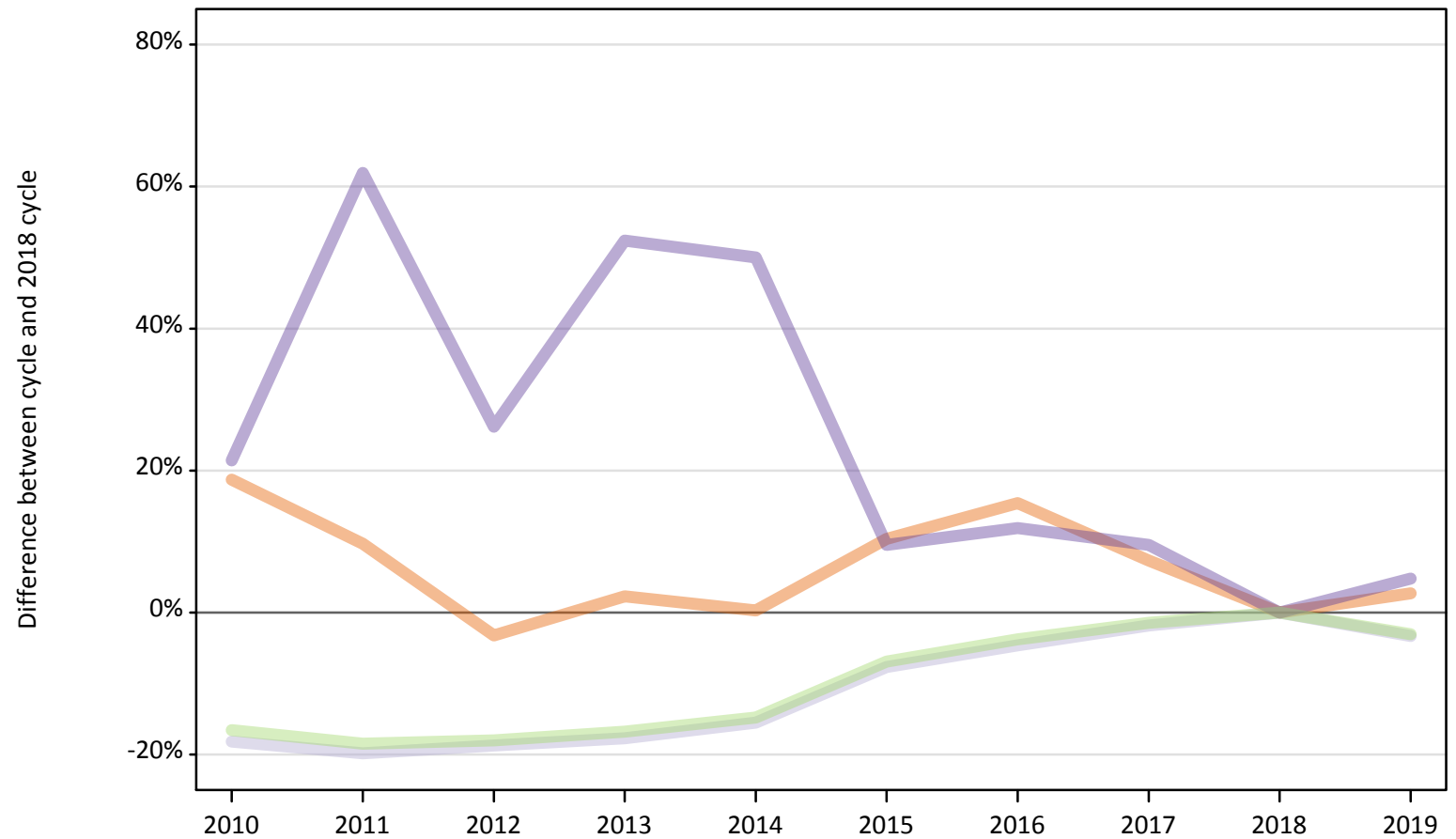
Country of provider	2010	2011	2012	2013	2014	2015	2016	2017	2018	2019
England	-10%	2%	-16%	-12%	-9%	2%	6%	3%	0%	-15%
Northern Ireland	-3%	-6%	-1%	9%	8%	-2%	4%	1%	0%	5%
Scotland	12%	11%	-5%	7%	2%	14%	18%	14%	0%	-10%
Wales	16%	43%	-1%	10%	3%	20%	31%	19%	0%	-9%
UK	-4%	-2%	-6%	3%	3%	0%	6%	2%	0%	-2%

Note: The percentage change is not recorded in the above table for groups with fewer than 10 placed applicants in that cycle or in the 2018 cycle.

B.25 Placed applicants at 28 days after A level results day: domiciled in Scotland

Selected provider countries: difference between cycle and 2018 cycle (at 28 days after A level results day)

- England
- Northern Ireland
- Scotland
- Wales
- UK



Note: The percentage change is not plotted in the above chart for groups with fewer than 30 placed applicants in any one cycle.

B.26 Placed applicants at 28 days after A level results day: domiciled in Scotland

Placed applicants by provider country (at 28 days after A level results day)

Country of provider	2010	2011	2012	2013	2014	2015	2016	2017	2018	2019
England	1,760	1,630	1,440	1,520	1,490	1,640	1,710	1,590	1,490	1,530
Northern Ireland	20	20	30	20	20	20	20	30	30	20
Scotland	27,430	26,880	27,260	27,600	28,330	30,950	31,980	32,910	33,530	32,420
Wales	50	70	50	60	60	50	50	50	40	40
UK	29,270	28,600	28,770	29,200	29,900	32,660	33,760	34,580	35,080	34,010

B.27 Placed applicants at 28 days after A level results day: domiciled in Scotland

Selected provider countries: difference between cycle and 2018 cycle (at 28 days after A level results day)

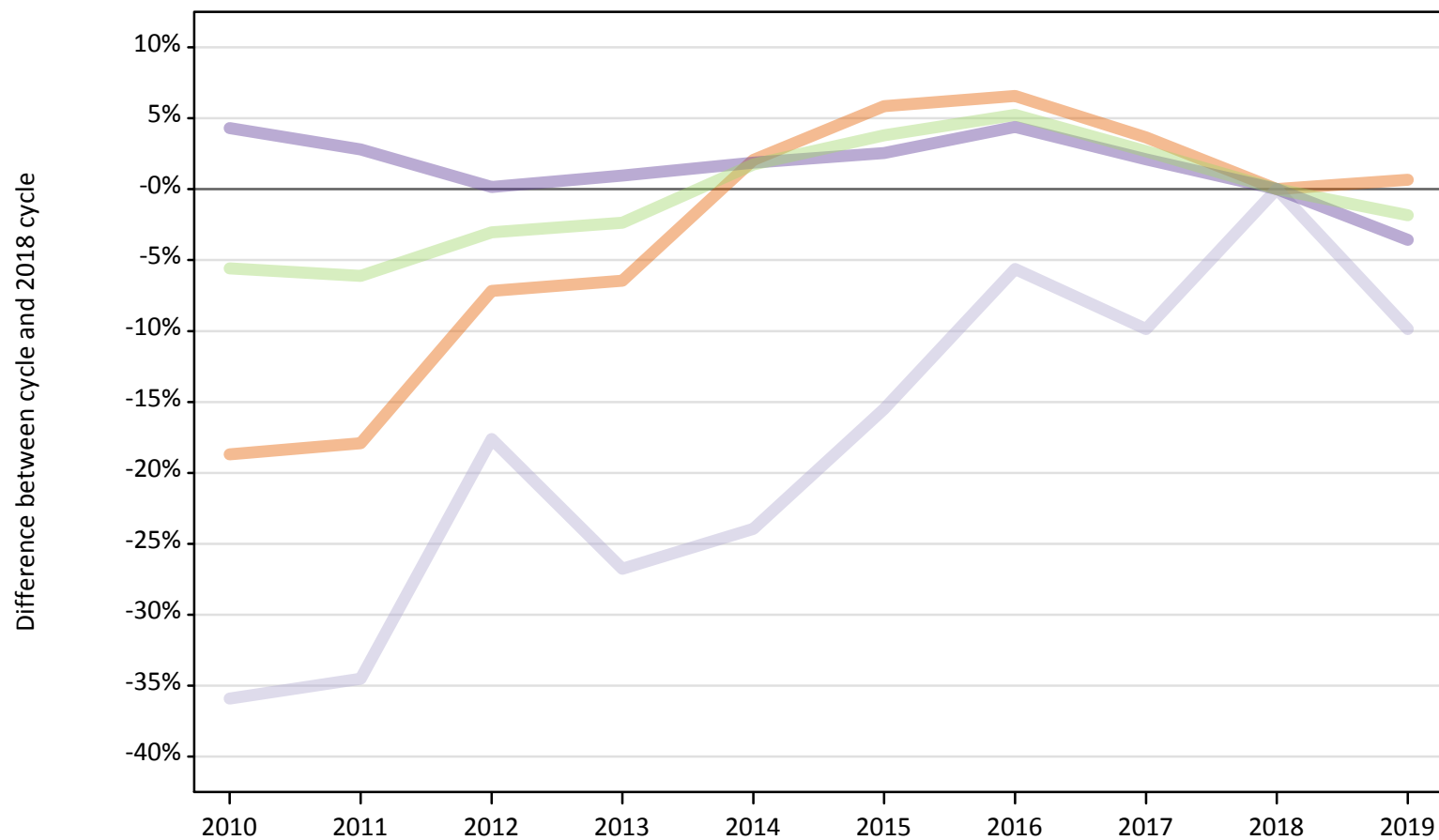
Country of provider	2010	2011	2012	2013	2014	2015	2016	2017	2018	2019
England	19%	10%	-3%	2%	0%	10%	15%	7%	0%	3%
Northern Ireland	-18%	-29%	-7%	-43%	-39%	-21%	-32%	11%	0%	-36%
Scotland	-18%	-20%	-19%	-18%	-16%	-8%	-5%	-2%	0%	-3%
Wales	21%	62%	26%	52%	50%	10%	12%	10%	0%	5%
UK	-17%	-18%	-18%	-17%	-15%	-7%	-4%	-1%	0%	-3%

Note: The percentage change is not recorded in the above table for groups with fewer than 10 placed applicants in that cycle or in the 2018 cycle.

B.28 Placed applicants at 28 days after A level results day: domiciled in Wales

Selected provider countries: difference between cycle and 2018 cycle (at 28 days after A level results day)

- England
- Northern Ireland
- Scotland
- Wales
- UK



Note: The percentage change is not plotted in the above chart for groups with fewer than 30 placed applicants in any one cycle.

B.29 Placed applicants at 28 days after A level results day: domiciled in Wales

Placed applicants by provider country (at 28 days after A level results day)

Country of provider	2010	2011	2012	2013	2014	2015	2016	2017	2018	2019
England	6,380	6,440	7,280	7,340	8,010	8,310	8,360	8,130	7,850	7,900
Northern Ireland	10	10	0	10	10	10	10	20	10	10
Scotland	90	90	120	100	110	120	130	130	140	130
Wales	11,320	11,150	10,870	10,950	11,050	11,120	11,330	11,080	10,850	10,460
UK	17,790	17,690	18,270	18,400	19,180	19,560	19,830	19,350	18,850	18,500

B.30 Placed applicants at 28 days after A level results day: domiciled in Wales

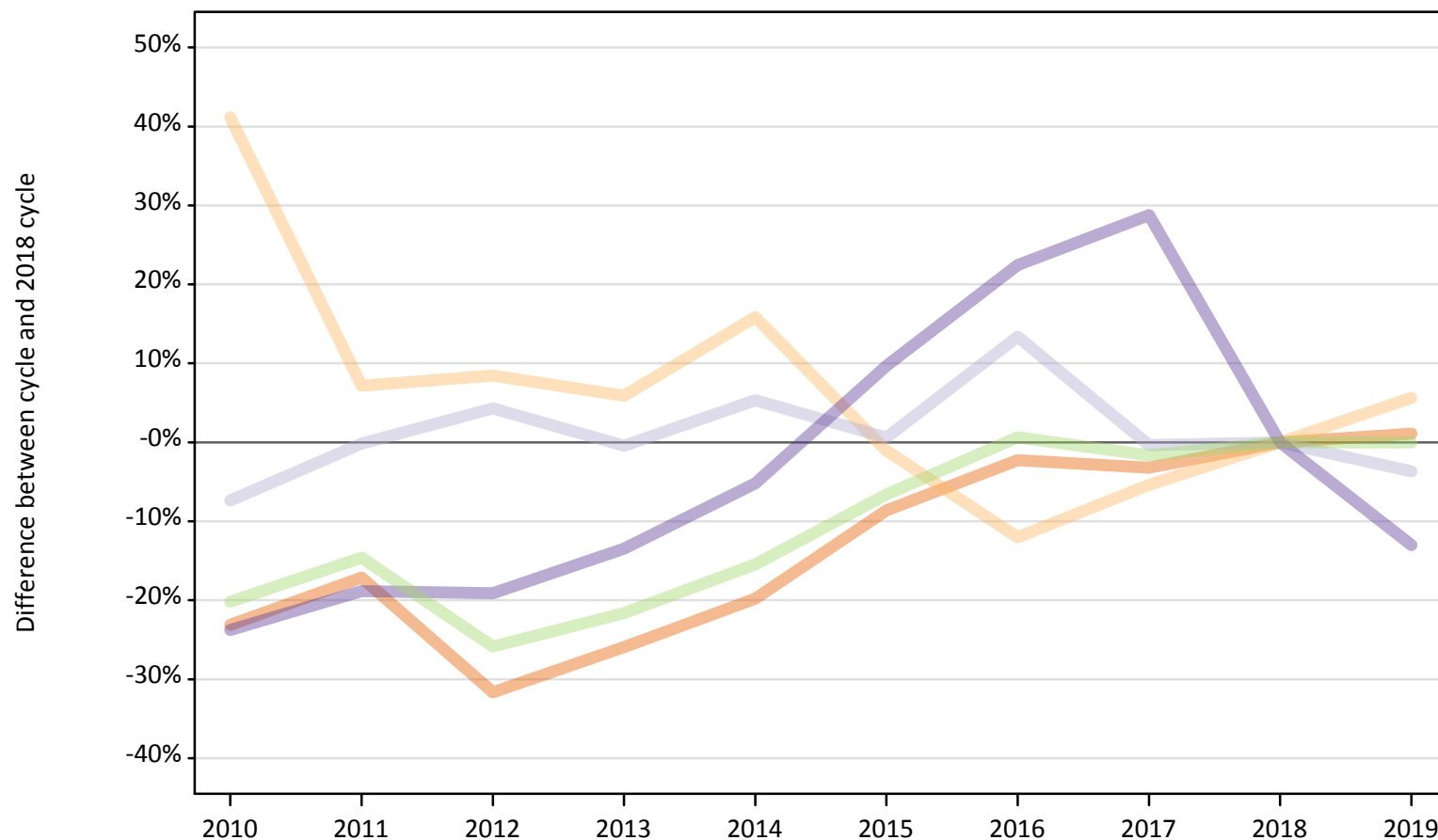
Selected provider countries: difference between cycle and 2018 cycle (at 28 days after A level results day)

Country of provider	2010	2011	2012	2013	2014	2015	2016	2017	2018	2019
England	-19%	-18%	-7%	-6%	2%	6%	7%	4%	0%	1%
Northern Ireland						30%	20%	50%	0%	20%
Scotland	-36%	-35%	-18%	-27%	-24%	-15%	-6%	-10%	0%	-10%
Wales	4%	3%	0%	1%	2%	3%	4%	2%	0%	-4%
UK	-6%	-6%	-3%	-2%	2%	4%	5%	3%	0%	-2%

Note: The percentage change is not recorded in the above table for groups with fewer than 10 placed applicants in that cycle or in the 2018 cycle.

B.31 Placed applicants at 28 days after A level results day: domiciled in EU (excluding UK)
Selected provider countries: difference between cycle and 2018 cycle (at 28 days after A level results day)

- England
- Northern Ireland
- Scotland
- Wales
- UK



Note: The percentage change is not plotted in the above chart for groups with fewer than 30 placed applicants in any one cycle.

B.32 Placed applicants at 28 days after A level results day: domiciled in EU (excluding UK)

Placed applicants by provider country (at 28 days after A level results day)

Country of provider	2010	2011	2012	2013	2014	2015	2016	2017	2018	2019
England	19,040	20,520	16,930	18,340	19,860	22,630	24,200	23,970	24,760	25,030
Northern Ireland	550	420	420	410	450	390	340	370	390	410
Scotland	3,770	4,060	4,240	4,050	4,280	4,090	4,610	4,050	4,060	3,920
Wales	870	920	920	980	1,080	1,250	1,390	1,460	1,140	990
UK	24,230	25,920	22,510	23,780	25,670	28,350	30,540	29,850	30,350	30,350

B.33 Placed applicants at 28 days after A level results day: domiciled in EU (excluding UK)

Selected provider countries: difference between cycle and 2018 cycle (at 28 days after A level results day)

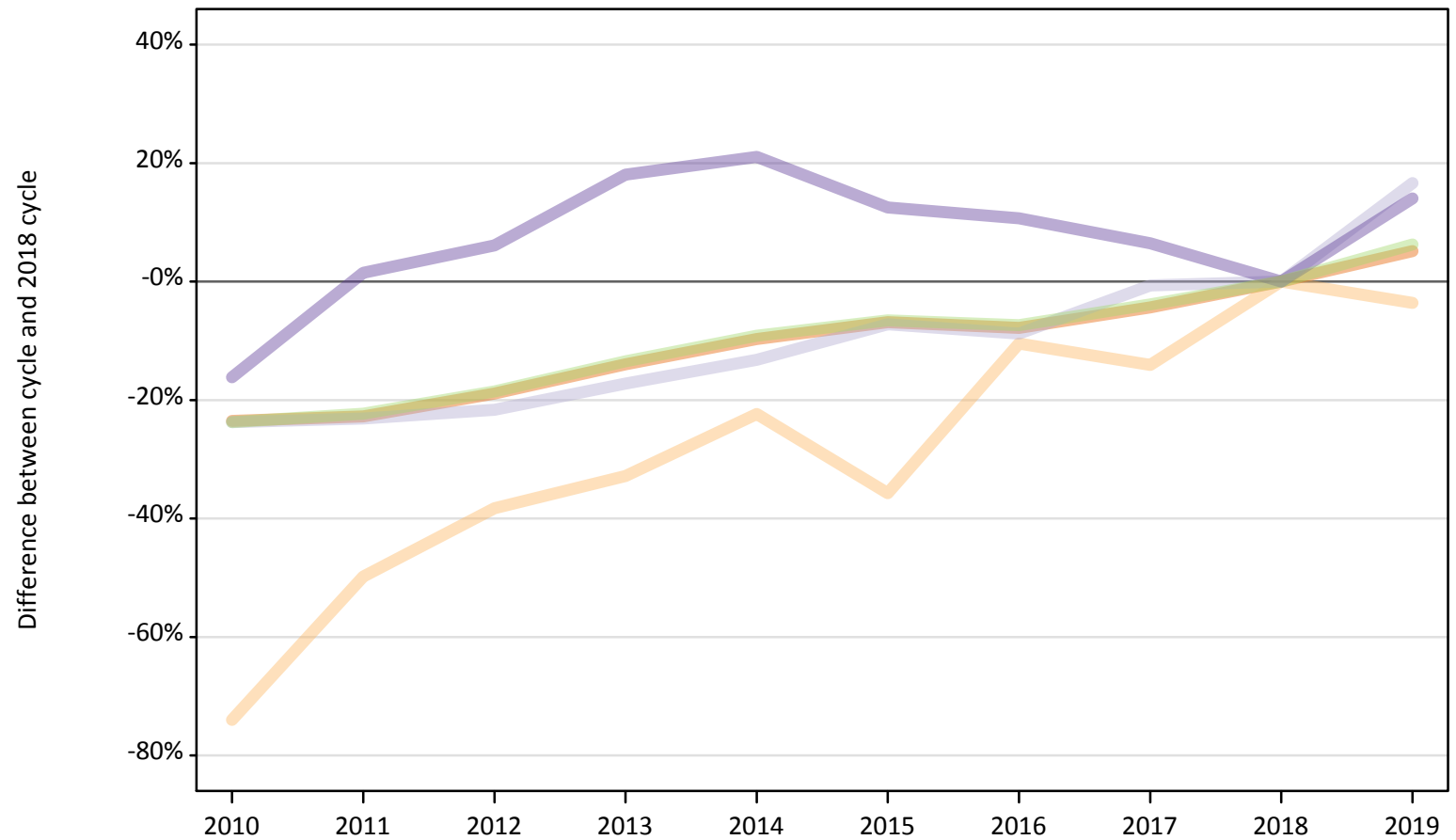
Country of provider	2010	2011	2012	2013	2014	2015	2016	2017	2018	2019
England	-23%	-17%	-32%	-26%	-20%	-9%	-2%	-3%	0%	1%
Northern Ireland	41%	7%	8%	6%	16%	-1%	-12%	-5%	0%	6%
Scotland	-7%	-0%	4%	-0%	5%	1%	13%	-0%	0%	-4%
Wales	-24%	-19%	-19%	-13%	-5%	10%	22%	29%	0%	-13%
UK	-20%	-15%	-26%	-22%	-15%	-7%	1%	-2%	0%	-0%

Note: The percentage change is not recorded in the above table for groups with fewer than 10 placed applicants in that cycle or in the 2018 cycle.

B.34 Placed applicants at 28 days after A level results day: domiciled in Not EU

Selected provider countries: difference between cycle and 2018 cycle (at 28 days after A level results day)

- England
- Northern Ireland
- Scotland
- Wales
- UK



Note: The percentage change is not plotted in the above chart for groups with fewer than 30 placed applicants in any one cycle.

B.35 Placed applicants at 28 days after A level results day: domiciled in Not EU

Placed applicants by provider country (at 28 days after A level results day)

Country of provider	2010	2011	2012	2013	2014	2015	2016	2017	2018	2019
England	25,970	26,240	27,550	29,220	30,680	31,650	31,320	32,480	33,970	35,720
Northern Ireland	70	140	170	190	220	180	250	240	280	270
Scotland	2,280	2,300	2,340	2,470	2,590	2,770	2,730	2,970	2,990	3,480
Wales	920	1,110	1,160	1,300	1,330	1,230	1,210	1,170	1,100	1,250
UK	29,240	29,780	31,230	33,180	34,820	35,830	35,500	36,850	38,330	40,720

B.36 Placed applicants at 28 days after A level results day: domiciled in Not EU

Selected provider countries: difference between cycle and 2018 cycle (at 28 days after A level results day)

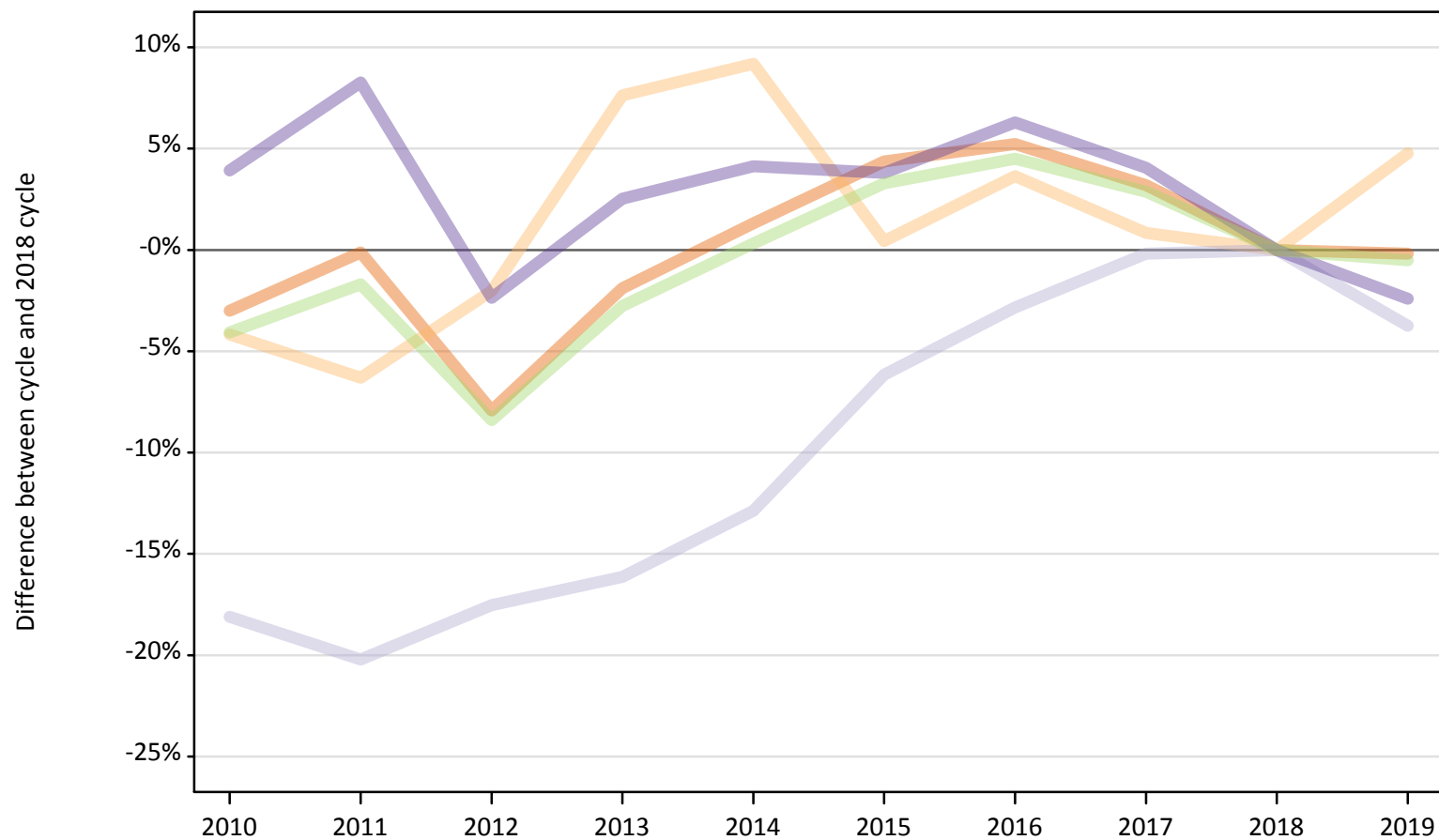
Country of provider	2010	2011	2012	2013	2014	2015	2016	2017	2018	2019
England	-24%	-23%	-19%	-14%	-10%	-7%	-8%	-4%	0%	5%
Northern Ireland	-74%	-50%	-38%	-33%	-22%	-36%	-10%	-14%	0%	-4%
Scotland	-24%	-23%	-22%	-17%	-13%	-7%	-9%	-1%	0%	17%
Wales	-16%	1%	6%	18%	21%	12%	11%	6%	0%	14%
UK	-24%	-22%	-19%	-13%	-9%	-7%	-7%	-4%	0%	6%

Note: The percentage change is not recorded in the above table for groups with fewer than 10 placed applicants in that cycle or in the 2018 cycle.

B.37 Placed applicants at 28 days after A level results day: domiciled in UK

Selected provider countries: difference between cycle and 2018 cycle (at 28 days after A level results day)

- England
- Northern Ireland
- Scotland
- Wales
- UK



Note: The percentage change is not plotted in the above chart for groups with fewer than 30 placed applicants in any one cycle.

B.38 Placed applicants at 28 days after A level results day: domiciled in UK

Placed applicants by provider country (at 28 days after A level results day)

Country of provider	2010	2011	2012	2013	2014	2015	2016	2017	2018	2019
England	346,390	356,680	328,840	350,360	361,800	372,710	375,750	368,490	357,100	356,440
Northern Ireland	9,090	8,890	9,290	10,210	10,360	9,530	9,830	9,560	9,480	9,940
Scotland	32,090	31,260	32,310	32,860	34,140	36,770	38,070	39,110	39,180	37,720
Wales	21,790	22,700	20,470	21,490	21,830	21,760	22,280	21,810	20,960	20,460
UK	409,350	419,520	390,910	414,920	428,120	440,770	445,940	438,980	426,730	424,550

B.39 Placed applicants at 28 days after A level results day: domiciled in UK

Selected provider countries: difference between cycle and 2018 cycle (at 28 days after A level results day)

Country of provider	2010	2011	2012	2013	2014	2015	2016	2017	2018	2019
England	-3%	-0%	-8%	-2%	1%	4%	5%	3%	0%	-0%
Northern Ireland	-4%	-6%	-2%	8%	9%	0%	4%	1%	0%	5%
Scotland	-18%	-20%	-18%	-16%	-13%	-6%	-3%	-0%	0%	-4%
Wales	4%	8%	-2%	3%	4%	4%	6%	4%	0%	-2%
UK	-4%	-2%	-8%	-3%	0%	3%	5%	3%	0%	-1%

Note: The percentage change is not recorded in the above table for groups with fewer than 10 placed applicants in that cycle or in the 2018 cycle.