

## Analysis at 00:05 on Thursday 12 September 2019 (28 days after A level results day)

### C.1 Placed applicants by country of domicile and age group, 2019 cycle (28 days after A level results day)

Domicile of applicant	Age group				
	17 and under	18	19	20 to 24	25 and over
England	610	207,450	67,590	50,080	32,470
Northern Ireland	30	8,030	2,440	2,480	870
Scotland	520	14,040	4,440	8,160	6,860
Wales	20	9,940	3,380	2,930	2,230
UK	1,180	239,460	77,850	63,640	42,430

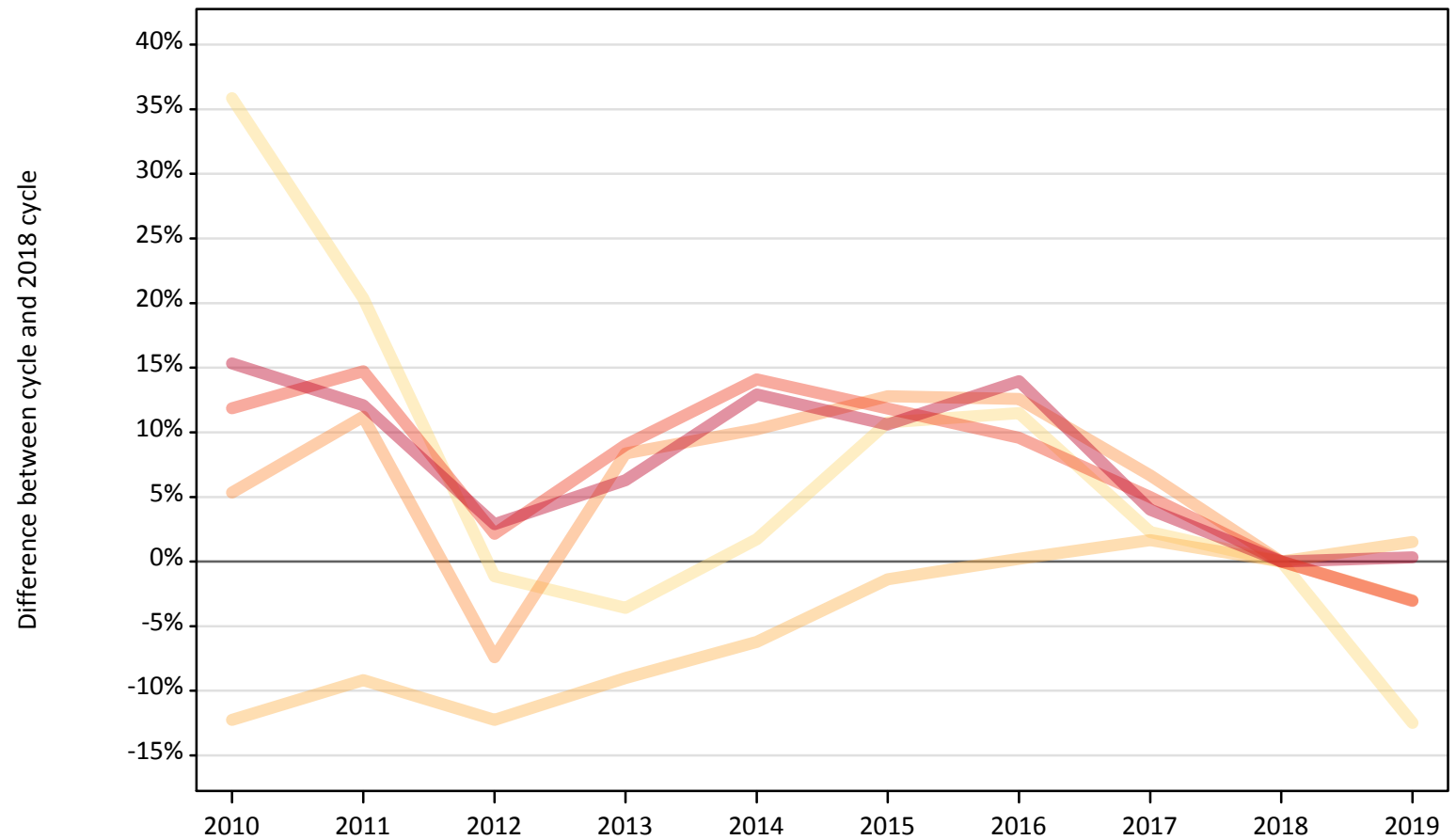
### C.2 Proportion of 18 year old population placed by country of domicile, 2019 cycle (28 days after A level results day)

Domicile of applicant	Age group	2019
England	18	34.7%
Northern Ireland	18	35.9%
Scotland	18	26.1%
Wales	18	29.6%

### C.3 Placed applicants from England by age group at 28 days after A level results day

Selected age groups: difference between cycle and 2018 cycle

- 17 and under
- 18
- 19
- 20 to 24
- 25 and over



Note: The percentage change is not plotted in the above chart for groups with fewer than 30 placed applicants in any one cycle.

#### C.4 Placed applicants from England by age group at 28 days after A level results day

All age groups

Domicile of applicant	Age group	2010	2011	2012	2013	2014	2015	2016	2017	2018	2019
England	17 and under	950	840	690	670	710	770	780	710	700	610
	18	179,290	185,560	179,320	185,910	191,630	201,510	204,780	207,720	204,330	207,450
	19	73,400	77,490	64,520	75,510	76,810	78,600	78,440	74,330	69,680	67,590
	20 to 24	57,780	59,260	52,760	56,310	58,930	57,770	56,600	54,220	51,650	50,080
	25 and over	37,330	36,280	33,300	34,400	36,550	35,800	36,880	33,660	32,370	32,470

#### C.5 Placed applicants from England by age group at 28 days after A level results day

Selected age groups: difference between cycle and 2018 cycle

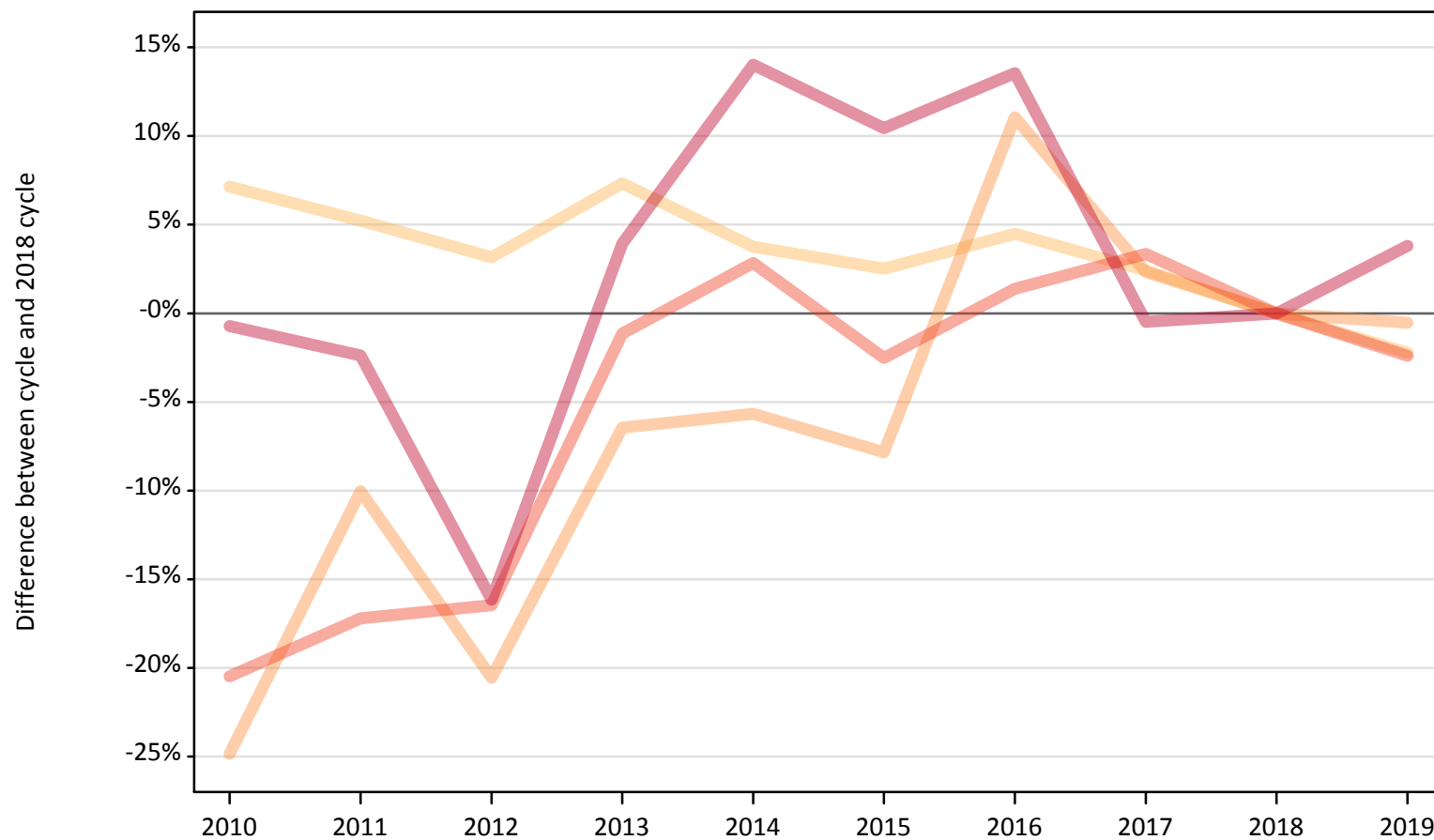
Domicile of applicant	Age group	2010	2011	2012	2013	2014	2015	2016	2017	2018	2019
England	17 and under	36%	20%	-1%	-4%	2%	11%	11%	2%	0%	-12%
	18	-12%	-9%	-12%	-9%	-6%	-1%	0%	2%	0%	2%
	19	5%	11%	-7%	8%	10%	13%	13%	7%	0%	-3%
	20 to 24	12%	15%	2%	9%	14%	12%	10%	5%	0%	-3%
	25 and over	15%	12%	3%	6%	13%	11%	14%	4%	0%	0%

Note: The percentage change is not recorded in the above table for groups with fewer than 10 placed applicants in that cycle or in the 2018 cycle.

### C.6 Placed applicants from Northern Ireland by age group at 28 days after A level results day

Selected age groups: difference between cycle and 2018 cycle

- 17 and under
- 18
- 19
- 20 to 24
- 25 and over



Note: The percentage change is not plotted in the above chart for groups with fewer than 30 placed applicants in any one cycle.

### C.7 Placed applicants from Northern Ireland by age group at 28 days after A level results day

All age groups

Domicile of applicant	Age group	2010	2011	2012	2013	2014	2015	2016	2017	2018	2019
Northern Ireland	17 and under	40	40	40	20	20	20	30	20	30	30
	18	8,800	8,640	8,470	8,820	8,520	8,420	8,580	8,410	8,210	8,030
	19	1,840	2,210	1,950	2,290	2,310	2,260	2,720	2,510	2,450	2,440
	20 to 24	2,020	2,100	2,120	2,510	2,610	2,480	2,570	2,620	2,540	2,480
	25 and over	840	820	710	880	960	930	960	840	840	870

### C.8 Placed applicants from Northern Ireland by age group at 28 days after A level results day

Selected age groups: difference between cycle and 2018 cycle

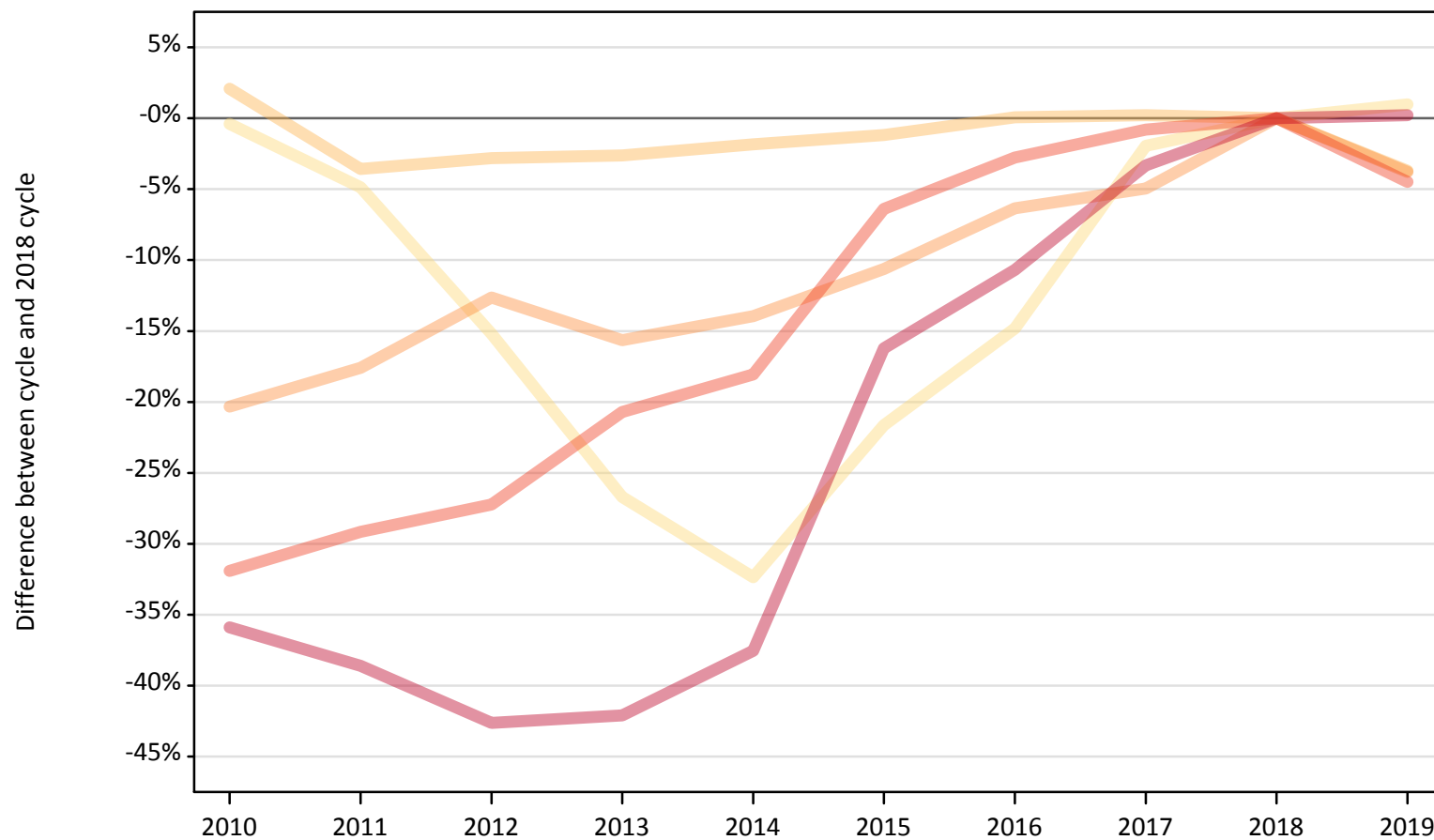
Domicile of applicant	Age group	2010	2011	2012	2013	2014	2015	2016	2017	2018	2019
Northern Ireland	17 and under	50%	42%	62%	-12%	-12%	-12%	19%	-31%	0%	8%
	18	7%	5%	3%	7%	4%	3%	4%	2%	0%	-2%
	19	-25%	-10%	-21%	-6%	-6%	-8%	11%	2%	0%	-1%
	20 to 24	-20%	-17%	-16%	-1%	3%	-3%	1%	3%	0%	-2%
	25 and over	-1%	-2%	-16%	4%	14%	10%	14%	-0%	0%	4%

Note: The percentage change is not recorded in the above table for groups with fewer than 10 placed applicants in that cycle or in the 2018 cycle.

### C.9 Placed applicants from Scotland by age group at 28 days after A level results day

Selected age groups: difference between cycle and 2018 cycle

- 17 and under
- 18
- 19
- 20 to 24
- 25 and over



Note: The percentage change is not plotted in the above chart for groups with fewer than 30 placed applicants in any one cycle.

### C.10 Placed applicants from Scotland by age group at 28 days after A level results day

All age groups

Domicile of applicant	Age group	2010	2011	2012	2013	2014	2015	2016	2017	2018	2019
Scotland	17 and under	510	490	440	380	350	400	440	500	510	520
	18	14,890	14,060	14,170	14,200	14,310	14,410	14,590	14,610	14,580	14,040
	19	3,680	3,800	4,030	3,890	3,970	4,120	4,320	4,380	4,610	4,440
	20 to 24	5,810	6,050	6,210	6,770	7,000	7,990	8,300	8,470	8,540	8,160
	25 and over	4,390	4,200	3,920	3,960	4,270	5,730	6,110	6,610	6,840	6,860

### C.11 Placed applicants from Scotland by age group at 28 days after A level results day

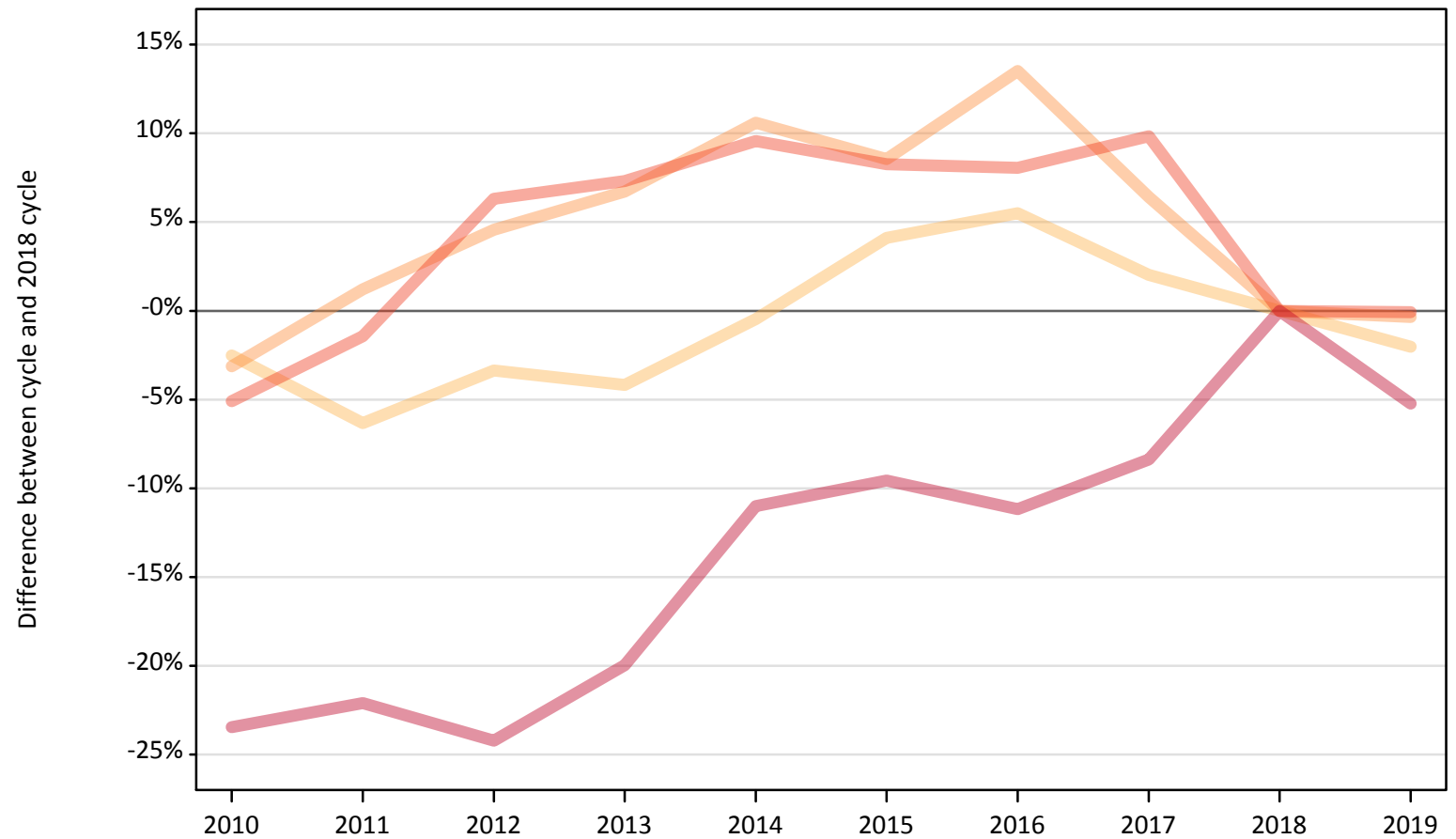
Selected age groups: difference between cycle and 2018 cycle

Domicile of applicant	Age group	2010	2011	2012	2013	2014	2015	2016	2017	2018	2019
Scotland	17 and under	-0%	-5%	-15%	-27%	-32%	-22%	-15%	-2%	0%	1%
	18	2%	-4%	-3%	-3%	-2%	-1%	0%	0%	0%	-4%
	19	-20%	-18%	-13%	-16%	-14%	-11%	-6%	-5%	0%	-4%
	20 to 24	-32%	-29%	-27%	-21%	-18%	-6%	-3%	-1%	0%	-4%
	25 and over	-36%	-39%	-43%	-42%	-38%	-16%	-11%	-3%	0%	0%

Note: The percentage change is not recorded in the above table for groups with fewer than 10 placed applicants in that cycle or in the 2018 cycle.

**C.12 Placed applicants from Wales by age group at 28 days after A level results day**  
Selected age groups: difference between cycle and 2018 cycle

- 17 and under
- 18
- 19
- 20 to 24
- 25 and over



Note: The percentage change is not plotted in the above chart for groups with fewer than 30 placed applicants in any one cycle.



### C.13 Placed applicants from Wales by age group at 28 days after A level results day

All age groups

Domicile of applicant	Age group	2010	2011	2012	2013	2014	2015	2016	2017	2018	2019
Wales	17 and under	40	40	20	30	20	20	20	20	30	20
	18	9,890	9,500	9,800	9,720	10,100	10,560	10,700	10,350	10,140	9,940
	19	3,290	3,440	3,550	3,620	3,760	3,690	3,850	3,610	3,400	3,380
	20 to 24	2,780	2,890	3,110	3,140	3,210	3,170	3,160	3,220	2,930	2,930
	25 and over	1,800	1,830	1,780	1,880	2,090	2,130	2,090	2,160	2,350	2,230

### C.14 Placed applicants from Wales by age group at 28 days after A level results day

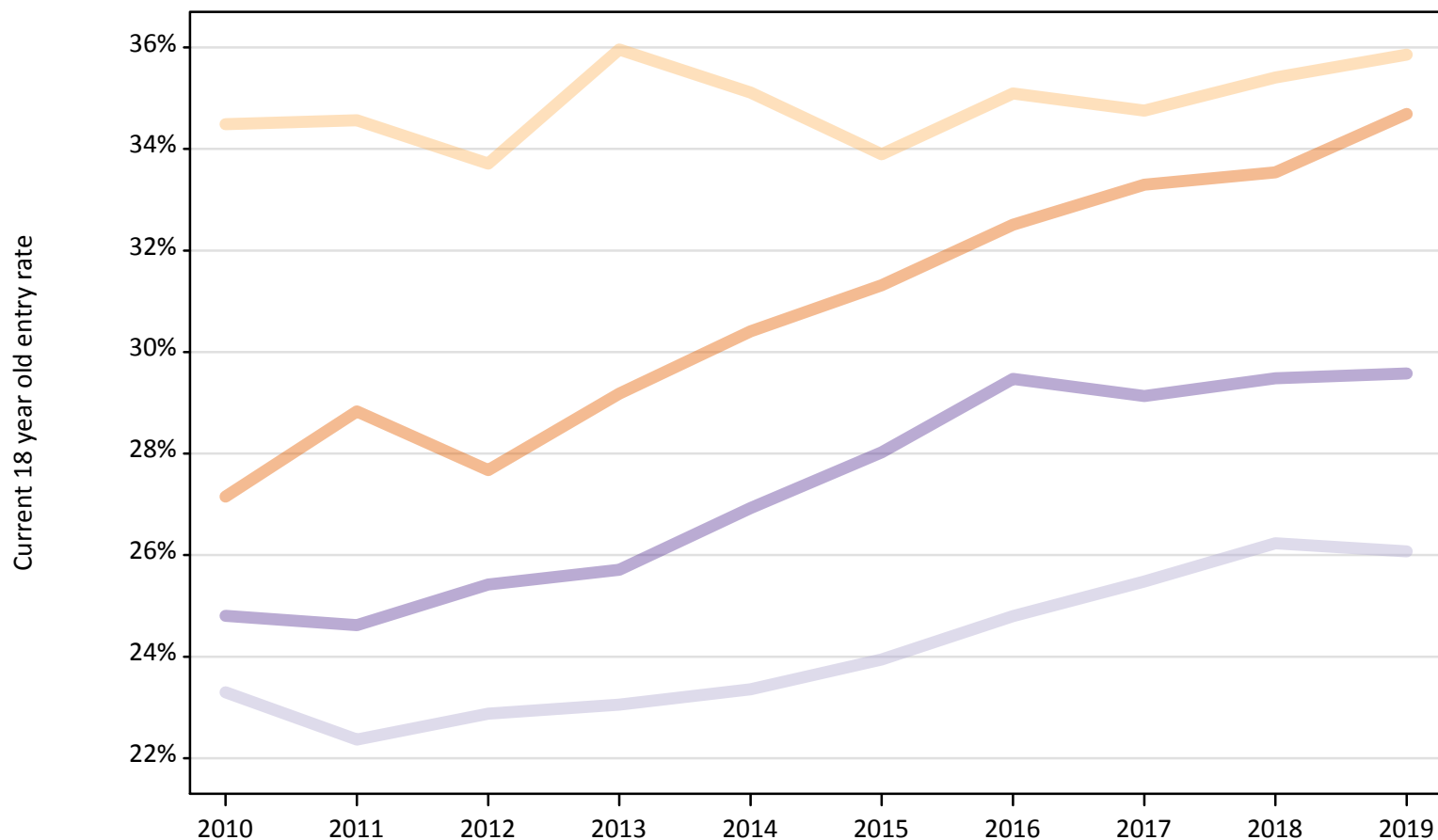
Selected age groups: difference between cycle and 2018 cycle

Domicile of applicant	Age group	2010	2011	2012	2013	2014	2015	2016	2017	2018	2019
Wales	17 and under	38%	42%	-12%	23%	-15%	-27%	-8%	-35%	0%	-15%
	18	-3%	-6%	-3%	-4%	-0%	4%	5%	2%	0%	-2%
	19	-3%	1%	5%	7%	11%	9%	14%	6%	0%	-0%
	20 to 24	-5%	-1%	6%	7%	10%	8%	8%	10%	0%	-0%
	25 and over	-23%	-22%	-24%	-20%	-11%	-10%	-11%	-8%	0%	-5%

Note: The percentage change is not recorded in the above table for groups with fewer than 10 placed applicants in that cycle or in the 2018 cycle.

### C.15 Entry rates for 18 year olds by UK country of domicile: 28 days after A level results day

Placed 18 year old applicants as a proportion of the 18 year old population



### C.16 Entry rates for 18 year olds by UK country of domicile: 28 days after A level results day

Placed 18 year old applicants as a proportion of the 18 year old population

Domicile of applicant	Age group	2010	2011	2012	2013	2014	2015	2016	2017	2018	2019
England	18	27.2%	28.8%	27.7%	29.2%	30.4%	31.3%	32.5%	33.3%	33.5%	34.7%
Northern Ireland	18	34.5%	34.6%	33.7%	36.0%	35.1%	33.9%	35.1%	34.8%	35.4%	35.9%
Scotland	18	23.3%	22.4%	22.9%	23.1%	23.4%	23.9%	24.8%	25.5%	26.2%	26.1%
Wales	18	24.8%	24.6%	25.4%	25.7%	26.9%	28.0%	29.5%	29.1%	29.5%	29.6%