

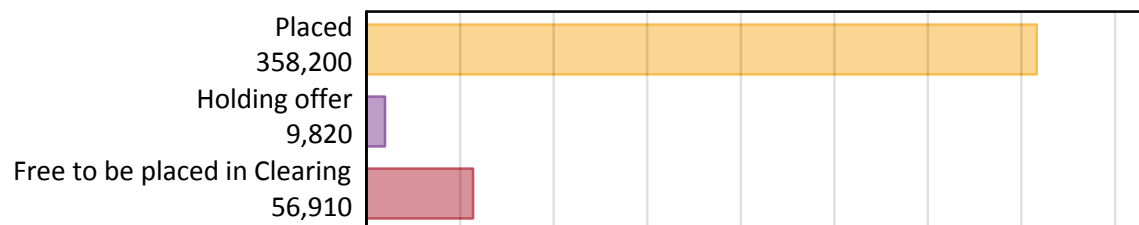
# Daily Clearing Analysis: Overview

Analysis at 00:05 on Thursday 12 September 2019 (28 days after A level results day)

## A.1 Applicants by type and status from England, 2019 cycle

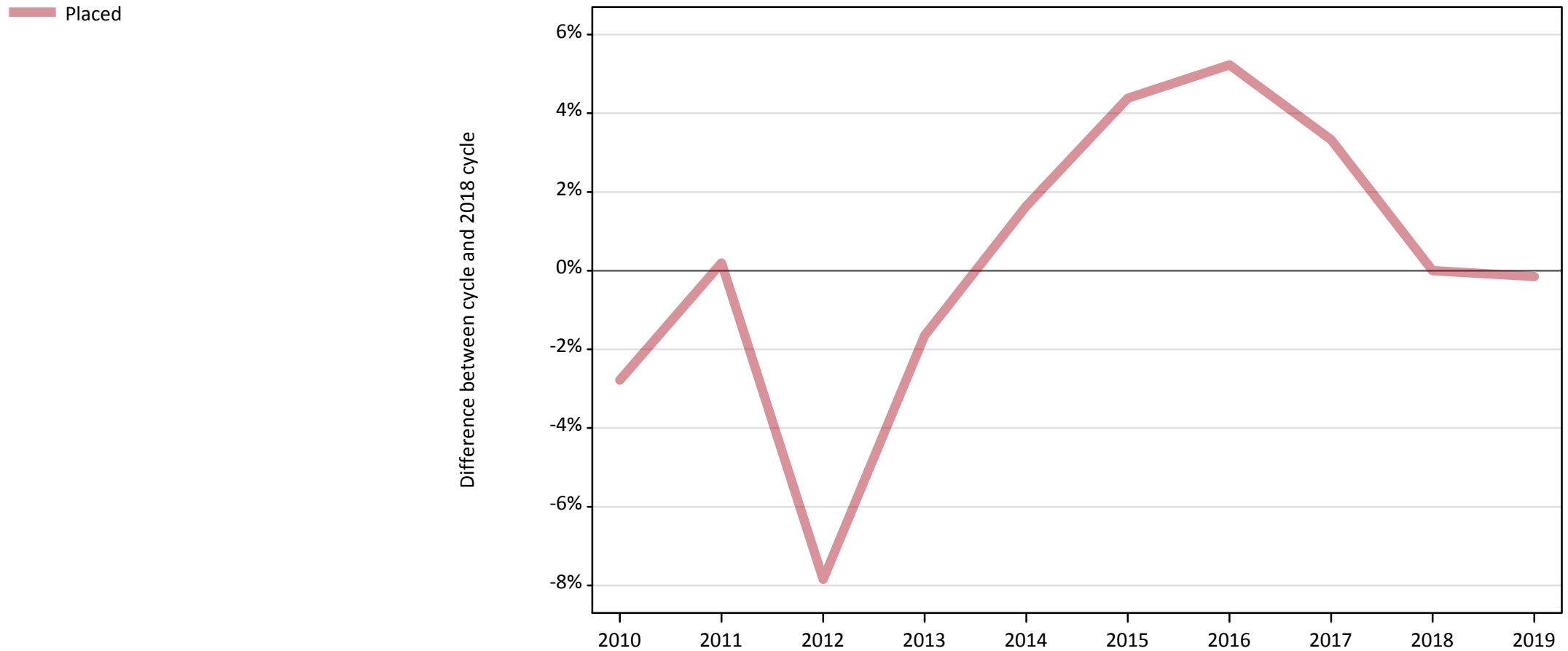
Applicant type	Status	2019
Main scheme	Placed (Clearing)	40,900
	Placed (Adjustment)	500
	Placed (Firm)	269,250
	Placed (Insurance)	24,780
	Placed (Other)	9,880
	Holding offer	9,820
	Free to be placed in Clearing	56,910
Direct to Clearing	Placed (Direct to Clearing)	12,900
	Other (Direct to Clearing)	6,100
All applicants	Placed	358,200

## A.2 Summary of applicants who are placed, holding offers or free to be placed in Clearing ( England )



### A.3 All placed applicants from England: 28 days after A level results day

All placed applicants: difference between cycle and 2018 cycle



Note: The percentage change is not plotted in the above chart for groups with fewer than 30 placed applicants in any one cycle.

#### A.4 All placed applicants from England: 28 days after A level results day

All placed applicants: applicants at 28 days after A level results day

Applicant type	Status	2010	2011	2012	2013	2014	2015	2016	2017	2018	2019
All applicants	Placed	348,750	359,420	330,580	352,810	364,620	374,440	377,480	370,650	358,730	358,200

#### A.5 All placed applicants from England: 28 days after A level results day

All placed applicants: difference between cycle and 2018 cycle

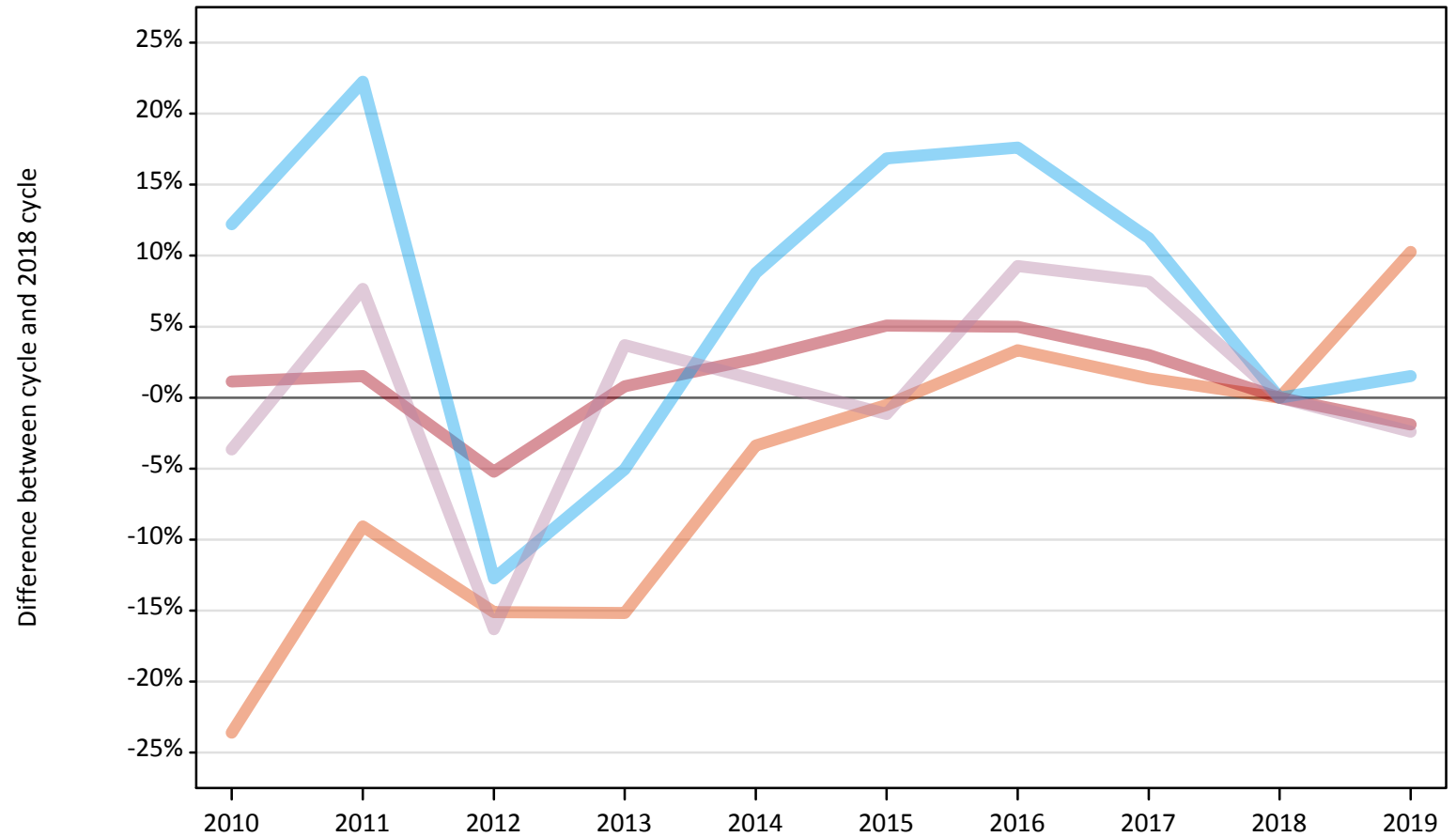
Applicant type	Status	2010	2011	2012	2013	2014	2015	2016	2017	2018	2019
All applicants	Placed	-3%	0%	-8%	-2%	2%	4%	5%	3%	0%	-0%

Note: The percentage change is not recorded in the above table for groups with fewer than 10 placed applicants in that cycle or in the 2018 cycle.

## A.6 Placed main scheme applicants from England: 28 days after A level results day

All Main scheme placed routes (excluding Adjustment): difference between cycle and 2018 cycle

- Placed (Clearing)
- Placed (Firm)
- Placed (Insurance)
- Placed (Other)



Note: The percentage change is not plotted in the above chart for groups with fewer than 30 placed applicants in any one cycle.

### A.7 Placed main scheme applicants from England: 28 days after A level results day

All Main scheme placed routes (excluding Adjustment): applicants at 28 days after A level results day

Applicant type	Status	2010	2011	2012	2013	2014	2015	2016	2017	2018	2019
Main scheme	Placed (Clearing)	28,340	33,720	31,490	31,460	35,840	36,900	38,330	37,590	37,090	40,900
	Placed (Firm)	277,550	278,570	260,120	276,610	281,930	288,340	288,100	282,660	274,430	269,250
	Placed (Insurance)	27,390	29,840	21,300	23,170	26,550	28,520	28,710	27,150	24,410	24,780
	Placed (Other)	9,760	10,900	8,480	10,500	10,260	10,010	11,070	10,960	10,130	9,880

### A.8 Placed main scheme applicants from England: 28 days after A level results day

All Main scheme placed routes (excluding Adjustment): difference between cycle and 2018 cycle

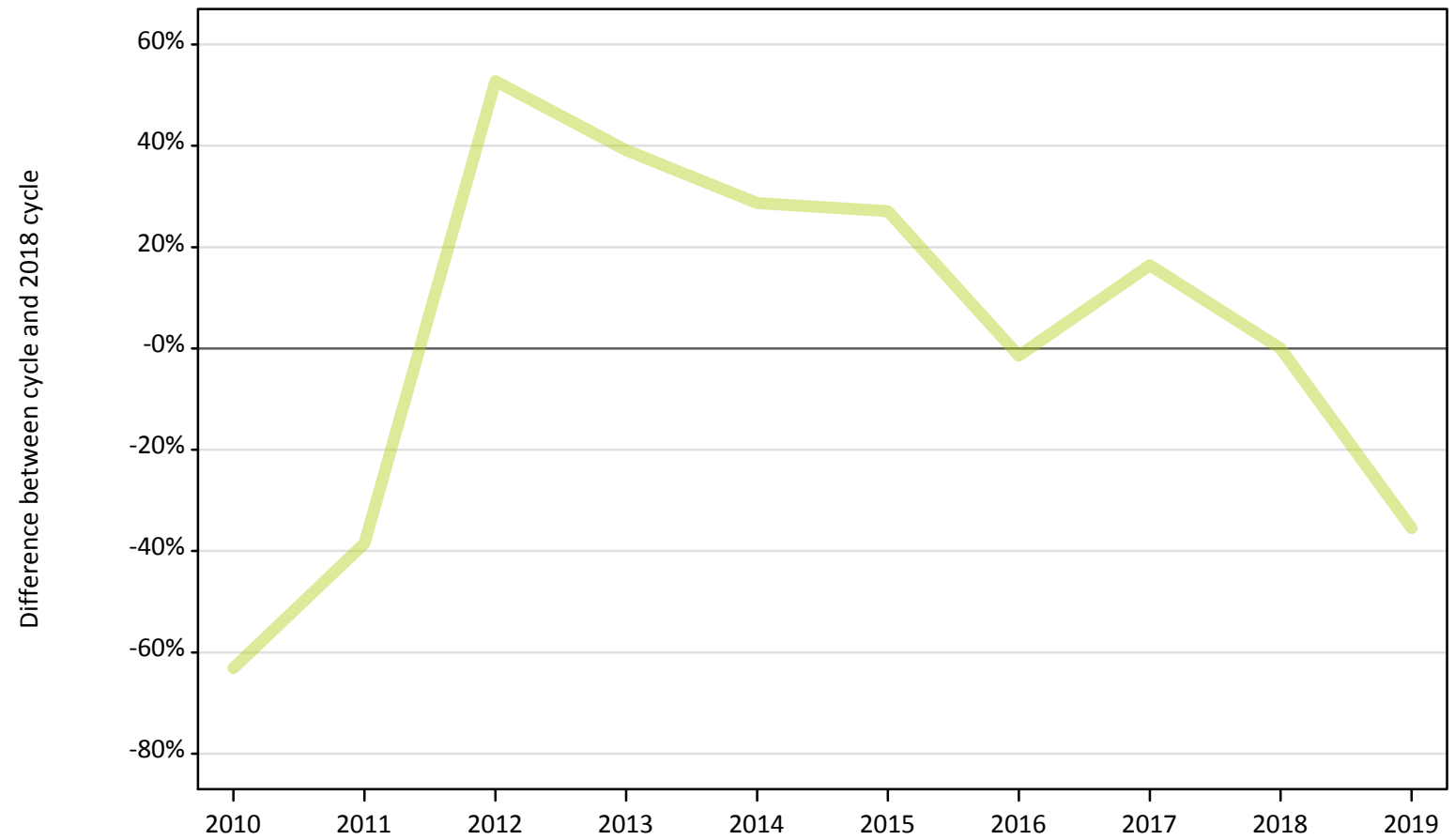
Applicant type	Status	2010	2011	2012	2013	2014	2015	2016	2017	2018	2019
Main scheme	Placed (Clearing)	-24%	-9%	-15%	-15%	-3%	-1%	3%	1%	0%	10%
	Placed (Firm)	1%	2%	-5%	1%	3%	5%	5%	3%	0%	-2%
	Placed (Insurance)	12%	22%	-13%	-5%	9%	17%	18%	11%	0%	2%
	Placed (Other)	-4%	8%	-16%	4%	1%	-1%	9%	8%	0%	-2%

Note: The percentage change is not recorded in the above table for groups with fewer than 10 placed applicants in that cycle or in the 2018 cycle.

## A.9 Main scheme applicants placed through adjustment: 28 days after A level results day

Placed through adjustment: difference between cycle and 2018 cycle

Placed (Adjustment)



Note: The percentage change is not plotted in the above chart for groups with fewer than 30 placed applicants in any one cycle.

### A.10 Main scheme applicants placed through adjustment: 28 days after A level results day

Placed through adjustment: applicants at 28 days after A level results day

Applicant type	Status	2010	2011	2012	2013	2014	2015	2016	2017	2018	2019
Main scheme	Placed (Adjustment)	280	470	1,170	1,070	990	980	760	890	770	500

### A.11 Main scheme applicants placed through adjustment: 28 days after A level results day

Placed through adjustment: difference between cycle and 2018 cycle

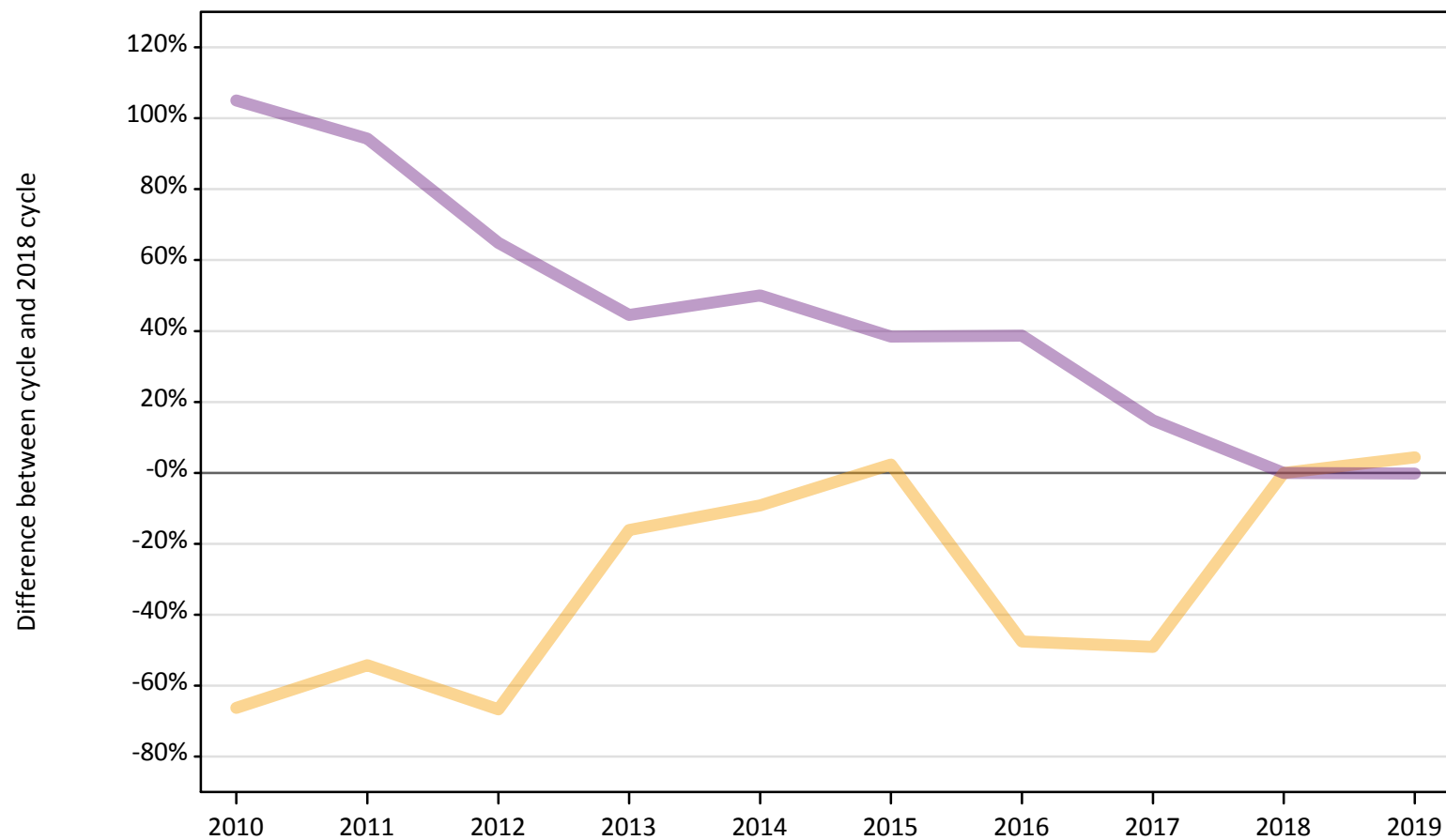
Applicant type	Status	2010	2011	2012	2013	2014	2015	2016	2017	2018	2019
Main scheme	Placed (Adjustment)	-63%	-38%	53%	39%	29%	27%	-1%	16%	0%	-35%

Note: The percentage change is not recorded in the above table for groups with fewer than 10 placed applicants in that cycle or in the 2018 cycle.

### A.12 Main scheme applicants not currently placed from England: 28 days after A level results day

Applicants in unplaced states: difference between cycle and 2018 cycle

— Holding offer  
— Free to be placed in Clearing



Note: The percentage change is not plotted in the above chart for groups with fewer than 30 unplaced applicants in any one cycle.



### A.13 Main scheme applicants not currently placed from England: 28 days after A level results day

Applicants in unplaced states: applicants at 28 days after A level results day

Applicant type	Status	2010	2011	2012	2013	2014	2015	2016	2017	2018	2019
Main scheme	Holding offer	3,180	4,300	3,130	7,900	8,550	9,630	4,940	4,790	9,410	9,820
	Free to be placed in Clearing	116,900	110,770	94,020	82,410	85,550	78,940	79,060	65,450	57,020	56,910

### A.14 Main scheme applicants not currently placed from England: 28 days after A level results day

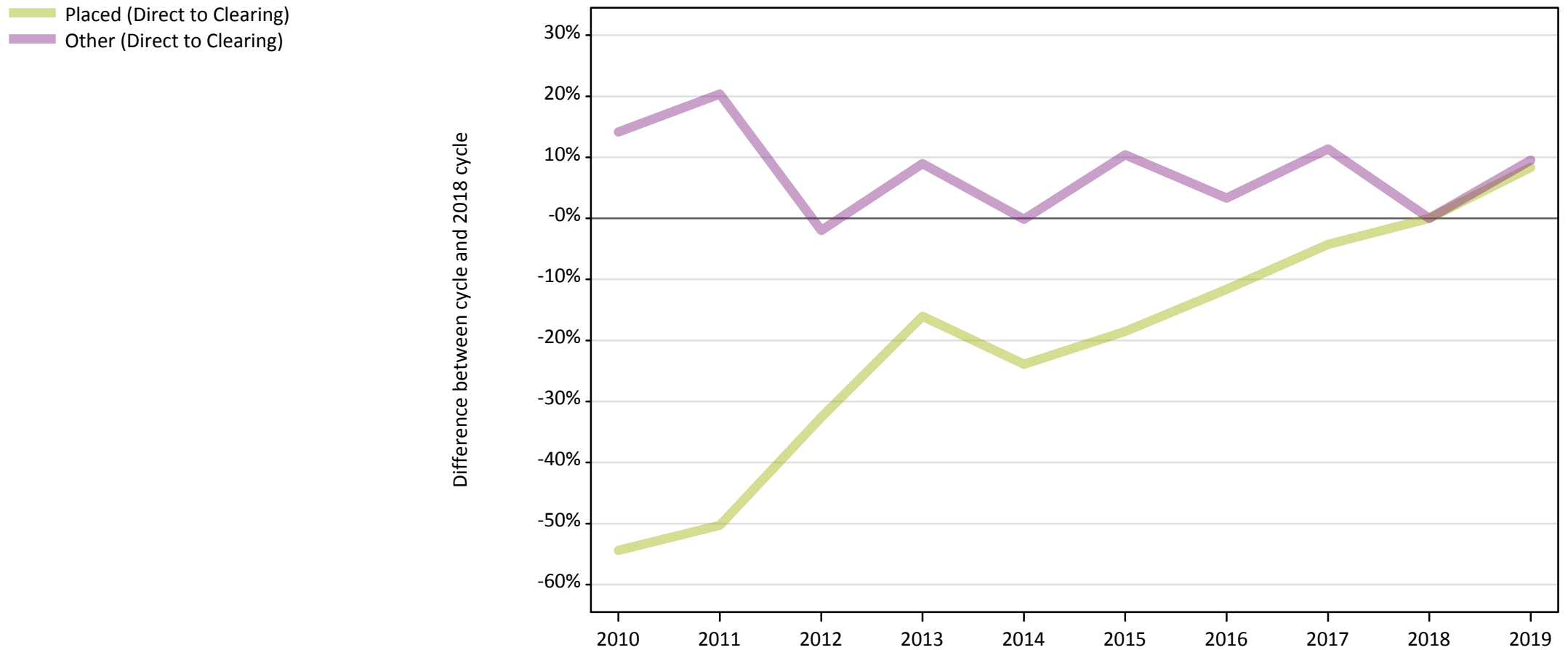
Applicants in unplaced states: difference between cycle and 2018 cycle

Applicant type	Status	2010	2011	2012	2013	2014	2015	2016	2017	2018	2019
Main scheme	Holding offer	-66%	-54%	-67%	-16%	-9%	2%	-48%	-49%	0%	4%
	Free to be placed in Clearing	105%	94%	65%	45%	50%	38%	39%	15%	0%	-0%

Note: The percentage change is not recorded in the above table for groups with fewer than 10 unplaced applicants in that cycle or in the 2018 cycle.

### A.15 Direct to Clearing applicants from England: 28 days after A level results day

Direct to Clearing: difference between cycle and 2018 cycle



Note: The percentage change is not plotted in the above chart for groups with fewer than 30 placed applicants in any one cycle.

### A.16 Direct to Clearing applicants from England: 28 days after A level results day

Direct to Clearing 28 days after A level results day

Applicant type	Status	2010	2011	2012	2013	2014	2015	2016	2017	2018	2019
Direct to Clearing	Placed (Direct to Clearing)	5,430	5,920	8,020	9,990	9,060	9,700	10,520	11,400	11,900	12,900
	Other (Direct to Clearing)	6,360	6,700	5,460	6,070	5,560	6,150	5,750	6,200	5,570	6,100

### A.17 Direct to Clearing applicants from England: 28 days after A level results day

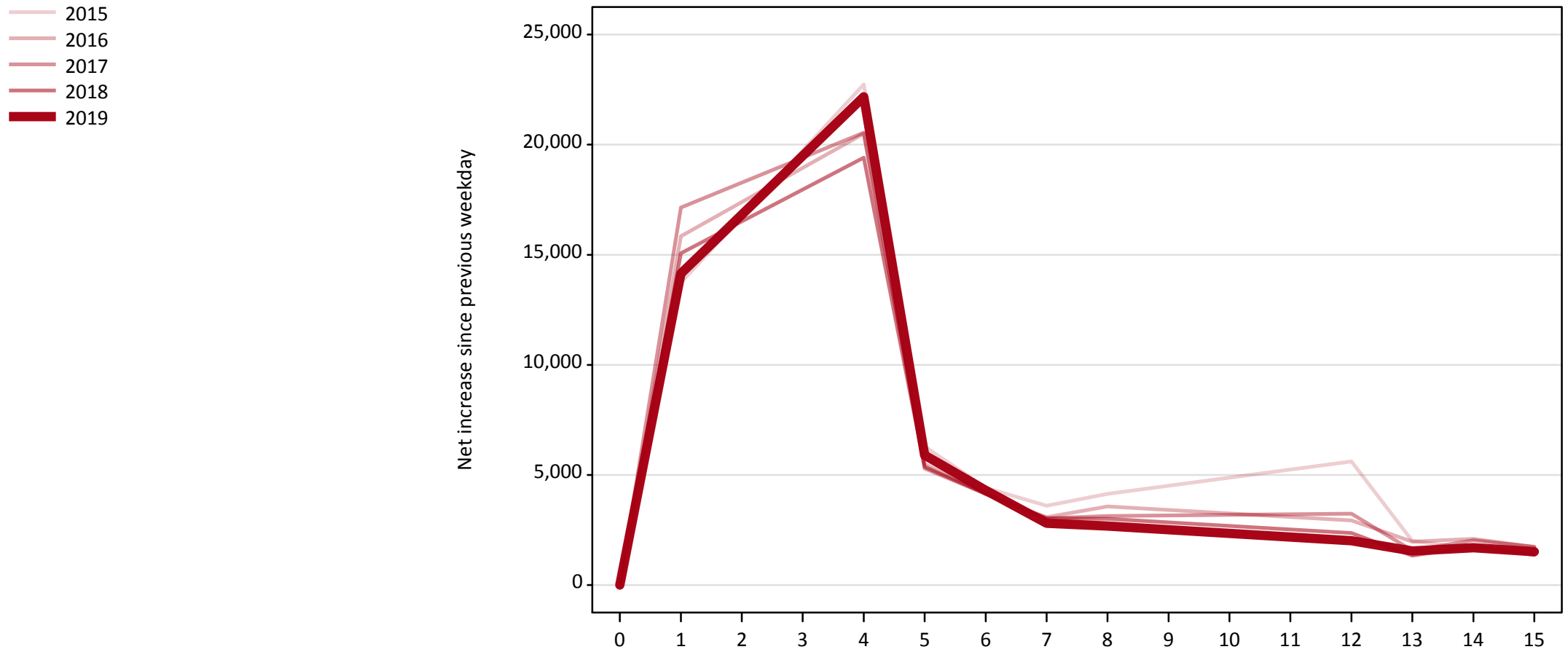
Direct to Clearing: difference between cycle and 2018 cycle

Applicant type	Status	2010	2011	2012	2013	2014	2015	2016	2017	2018	2019
Direct to Clearing	Placed (Direct to Clearing)	-54%	-50%	-33%	-16%	-24%	-19%	-12%	-4%	0%	8%
	Other (Direct to Clearing)	14%	20%	-2%	9%	-0%	10%	3%	11%	0%	10%

Note: The percentage change is not recorded in the above table for groups with fewer than 10 placed applicants in that cycle or in the 2018 cycle.

### A.18 All Placed: Daily net change (from England)

Net increase since previous weekday (2019 cycle up to 28 days after A level results day)



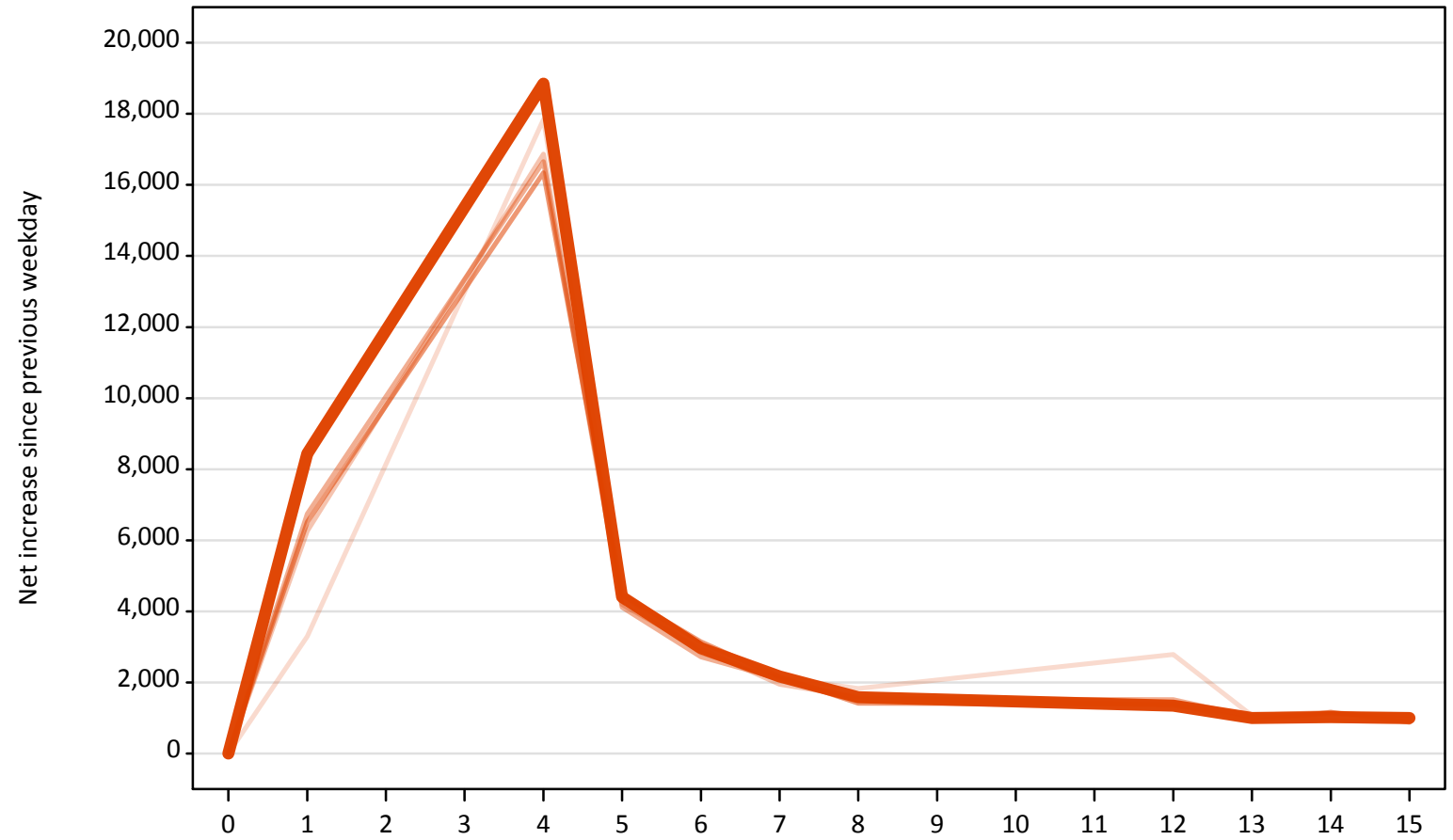
**A.19 All Placed: Daily net change (from England)**

Net increase since previous weekday (2019 cycle up to 28 days after A level results day)

Applicant status, days since A level results day	2015	2016	2017	2018	2019	
All Placed	0	0	0	0	0	
	1	13,730	15,840	17,150	15,070	14,150
	4	22,730	20,500	20,540	19,410	22,170
	5	6,300	5,500	5,300	5,370	5,900
	6	4,410	4,120	4,140	4,150	4,300
	7	3,600	3,080	3,030	3,030	2,800
	8	4,140	3,570	3,130	3,010	2,680
	12	5,610	2,940	3,240	2,360	2,020
	13	2,000	1,970	1,560	1,340	1,550
	14	1,640	2,100	2,030	1,760	1,690
	15	1,540	1,730	1,740	1,360	1,520

**A.20 Placed through Clearing only: Daily net change (from England)**  
Net increase since previous weekday (2019 cycle up to 28 days after A level results day)

- 2015
- 2016
- 2017
- 2018
- 2019**



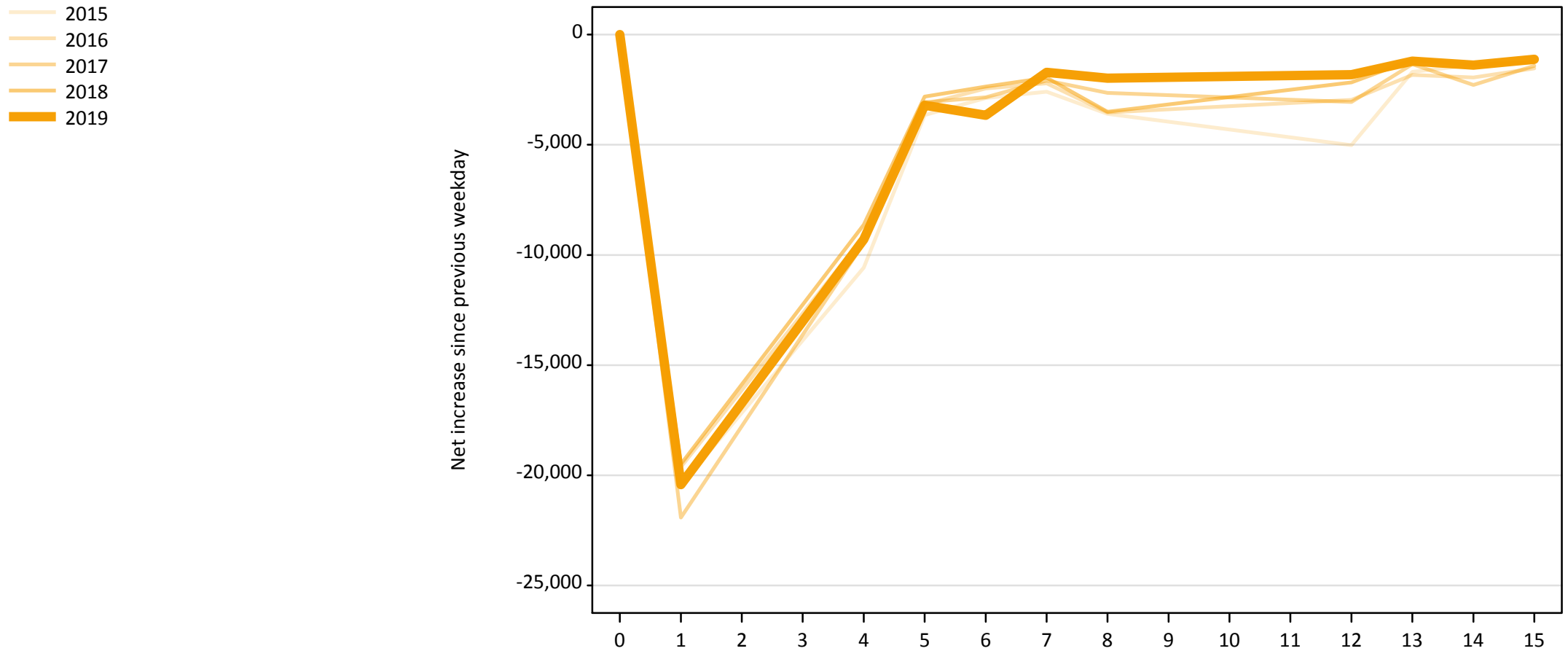
### A.21 Placed through Clearing only: Daily net change (from England)

Net increase since previous weekday (2019 cycle up to 28 days after A level results day)

Applicant status, days since A level results day		2015	2016	2017	2018	2019
Placed through Clearing only	0	0	0	0	0	0
	1	3,300	6,260	6,740	6,510	8,440
	4	17,850	16,870	16,660	16,340	18,850
	5	4,470	4,190	4,120	4,470	4,410
	6	2,830	2,940	2,720	3,150	2,970
	7	2,140	1,950	2,100	2,160	2,170
	8	1,830	1,590	1,540	1,410	1,580
	12	2,790	1,360	1,510	1,390	1,350
	13	1,060	1,080	1,020	920	1,000
	14	930	1,160	1,120	1,160	1,030
	15	880	970	1,060	880	1,000

### A.22 Holding Offer: Daily net change (from England)

Net increase since previous weekday (2019 cycle up to 28 days after A level results day)



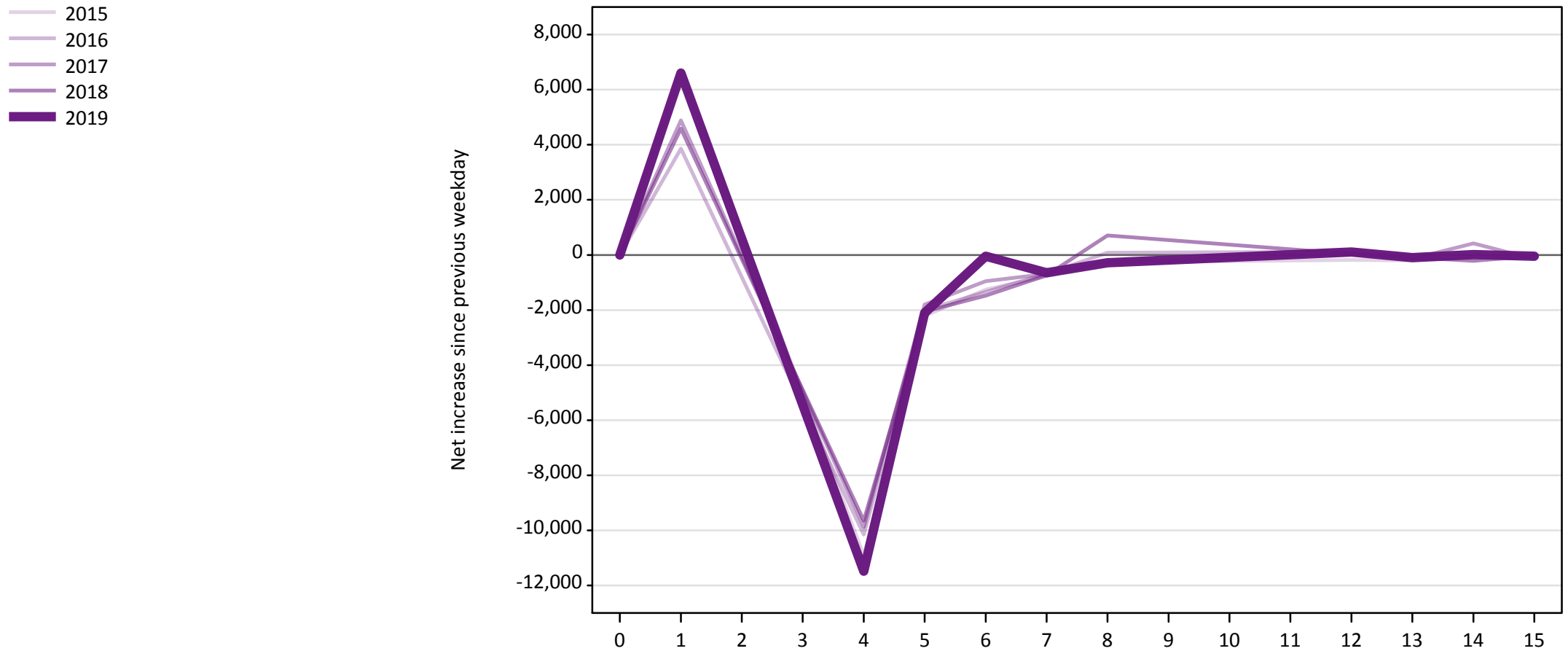


### A.23 Holding Offer: Daily net change (from England)

Net increase since previous weekday (2019 cycle up to 28 days after A level results day)

Applicant status, days since A level results day	2015	2016	2017	2018	2019	
Holding Offer	0	0	0	0	0	
	1	-20,460	-19,620	-21,920	-19,500	-20,430
	4	-10,580	-9,160	-9,470	-8,630	-9,300
	5	-3,660	-3,160	-3,060	-2,820	-3,210
	6	-2,870	-2,450	-2,840	-2,360	-3,660
	7	-2,590	-2,210	-2,080	-1,960	-1,720
	8	-3,590	-3,540	-2,650	-3,510	-1,980
	12	-5,010	-2,970	-3,060	-2,170	-1,820
	13	-1,690	-1,830	-1,340	-1,160	-1,210
	14	-1,370	-1,950	-2,290	-1,360	-1,390
	15	-1,280	-1,530	-1,420	-1,240	-1,120

**A.24 Free to be placed in Clearing: Daily net change (from England)**  
Net increase since previous weekday (2019 cycle up to 28 days after A level results day)



**A.25 Free to be placed in Clearing: Daily net change (from England)**

Net increase since previous weekday (2019 cycle up to 28 days after A level results day)

Applicant status, days since A level results day		2015	2016	2017	2018	2019
Free to be placed in Clearing	0	0	0	0	0	0
	1	6,690	3,860	4,890	4,590	6,600
	4	-10,920	-10,160	-9,880	-9,640	-11,480
	5	-2,220	-2,000	-1,800	-2,050	-2,110
	6	-1,260	-1,340	-950	-1,480	-40
	7	-770	-680	-690	-740	-640
	8	-270	80	-270	710	-290
	12	-190	110	50	40	110
	13	-200	-130	-140	-90	-100
	14	-120	-20	420	-220	10
	15	-70	-70	-150	-30	-50