

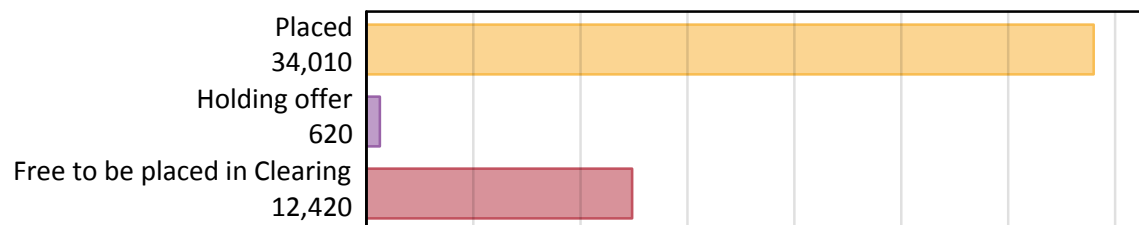
# Daily Clearing Analysis: Overview

Analysis at 00:05 on Thursday 12 September 2019 (28 days after A level results day)

## A.1 Applicants by type and status from Scotland, 2019 cycle

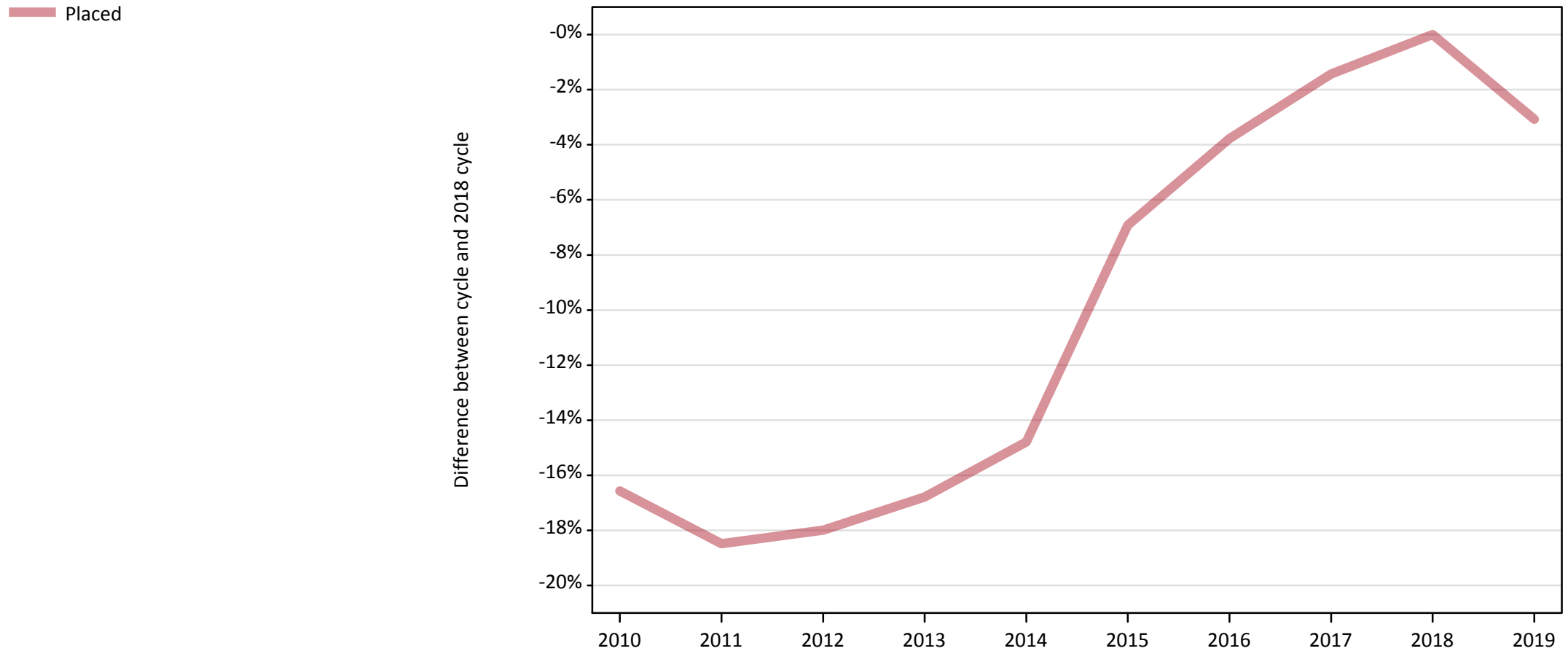
Applicant type	Status	2019
Main scheme	Placed (Clearing)	1,320
	Placed (Adjustment)	0
	Placed (Firm)	30,290
	Placed (Insurance)	1,270
	Placed (Other)	590
	Holding offer	620
	Free to be placed in Clearing	12,420
Direct to Clearing	Placed (Direct to Clearing)	530
	Other (Direct to Clearing)	410
All applicants	Placed	34,010

## A.2 Summary of applicants who are placed, holding offers or free to be placed in Clearing ( Scotland )



### A.3 All placed applicants from Scotland: 28 days after A level results day

All placed applicants: difference between cycle and 2018 cycle



Note: The percentage change is not plotted in the above chart for groups with fewer than 30 placed applicants in any one cycle.

#### A.4 All placed applicants from Scotland: 28 days after A level results day

All placed applicants: applicants at 28 days after A level results day

Applicant type	Status	2010	2011	2012	2013	2014	2015	2016	2017	2018	2019
All applicants	Placed	29,270	28,600	28,770	29,200	29,900	32,660	33,760	34,580	35,080	34,010

#### A.5 All placed applicants from Scotland: 28 days after A level results day

All placed applicants: difference between cycle and 2018 cycle

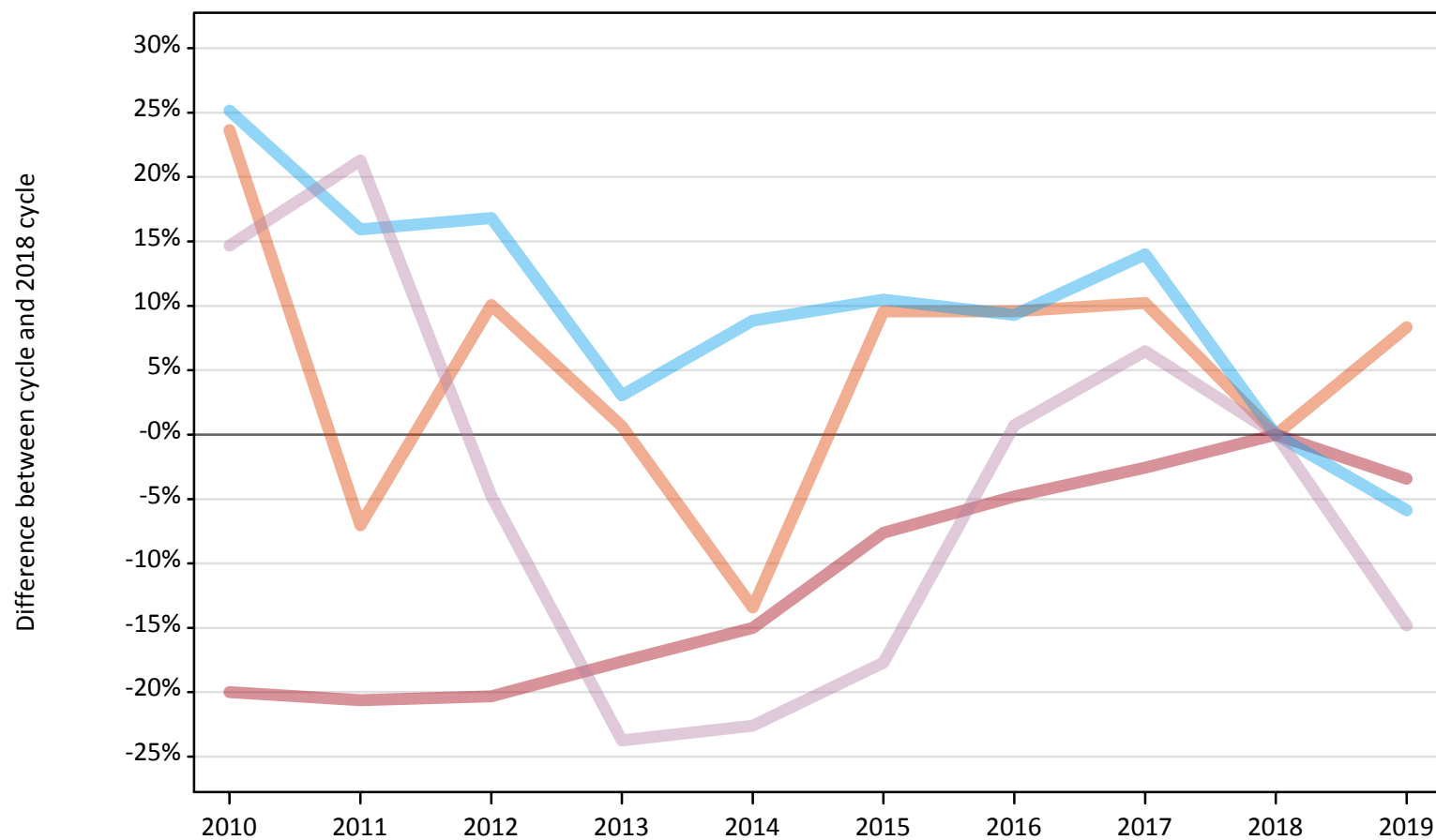
Applicant type	Status	2010	2011	2012	2013	2014	2015	2016	2017	2018	2019
All applicants	Placed	-17%	-18%	-18%	-17%	-15%	-7%	-4%	-1%	0%	-3%

Note: The percentage change is not recorded in the above table for groups with fewer than 10 placed applicants in that cycle or in the 2018 cycle.

## A.6 Placed main scheme applicants from Scotland: 28 days after A level results day

All Main scheme placed routes (excluding Adjustment): difference between cycle and 2018 cycle

- Placed (Clearing)
- Placed (Firm)
- Placed (Insurance)
- Placed (Other)



Note: The percentage change is not plotted in the above chart for groups with fewer than 30 placed applicants in any one cycle.

### A.7 Placed main scheme applicants from Scotland: 28 days after A level results day

All Main scheme placed routes (excluding Adjustment): applicants at 28 days after A level results day

Applicant type	Status	2010	2011	2012	2013	2014	2015	2016	2017	2018	2019
Main scheme	Placed (Clearing)	1,510	1,140	1,350	1,230	1,060	1,340	1,340	1,350	1,220	1,320
	Placed (Firm)	25,090	24,900	24,990	25,840	26,660	28,980	29,860	30,560	31,360	30,290
	Placed (Insurance)	1,680	1,560	1,570	1,390	1,460	1,490	1,470	1,530	1,340	1,270
	Placed (Other)	800	840	660	530	540	570	700	740	700	590

### A.8 Placed main scheme applicants from Scotland: 28 days after A level results day

All Main scheme placed routes (excluding Adjustment): difference between cycle and 2018 cycle

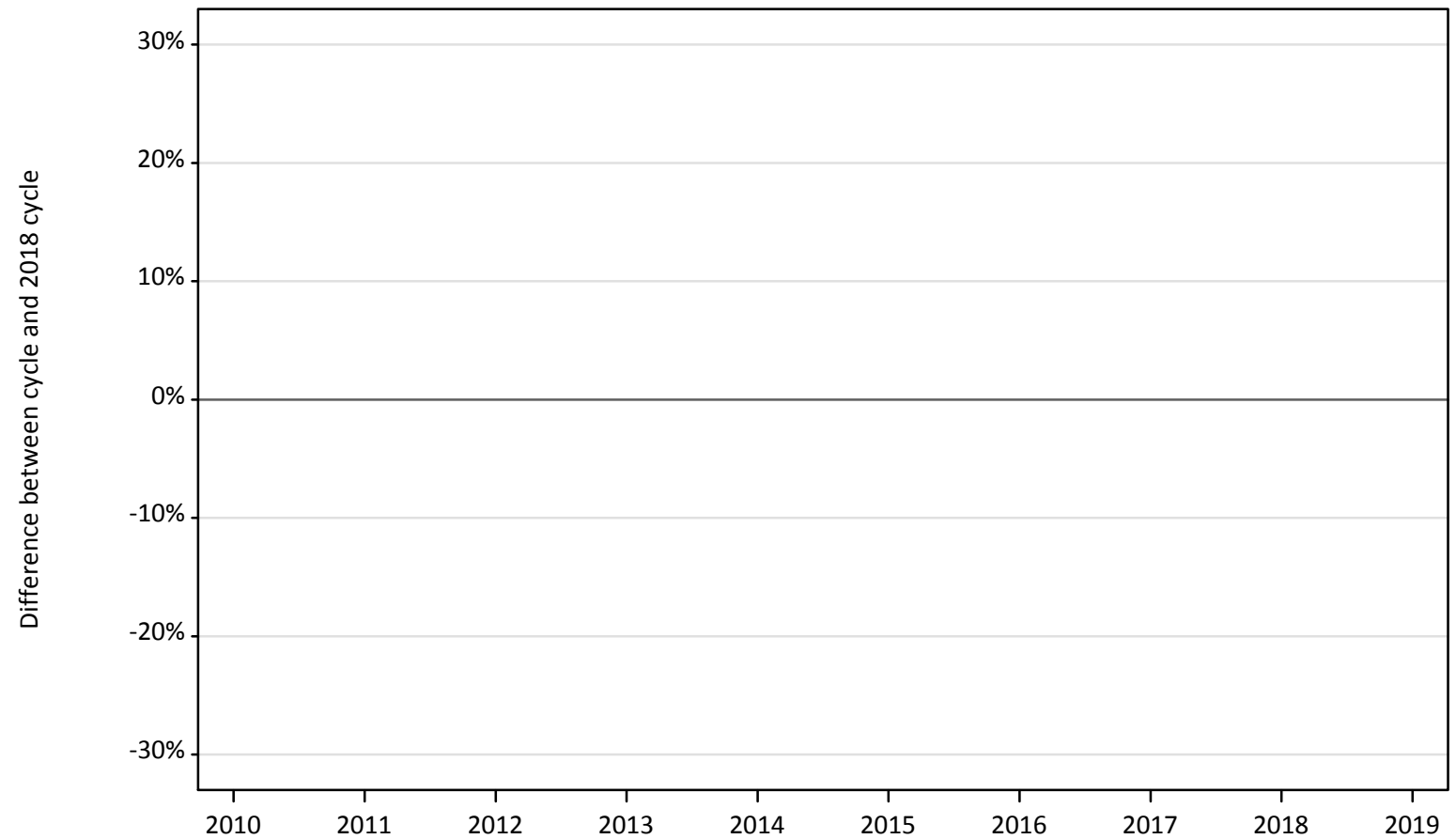
Applicant type	Status	2010	2011	2012	2013	2014	2015	2016	2017	2018	2019
Main scheme	Placed (Clearing)	24%	-7%	10%	1%	-13%	10%	10%	10%	0%	8%
	Placed (Firm)	-20%	-21%	-20%	-18%	-15%	-8%	-5%	-3%	0%	-3%
	Placed (Insurance)	25%	16%	17%	3%	9%	10%	9%	14%	0%	-6%
	Placed (Other)	15%	21%	-5%	-24%	-23%	-18%	1%	6%	0%	-15%

Note: The percentage change is not recorded in the above table for groups with fewer than 10 placed applicants in that cycle or in the 2018 cycle.

### A.9 Main scheme applicants placed through adjustment: 28 days after A level results day

Placed through adjustment: difference between cycle and 2018 cycle

Placed (Adjustment)



Note: The percentage change is not plotted in the above chart for groups with fewer than 30 placed applicants in any one cycle.

### A.10 Main scheme applicants placed through adjustment: 28 days after A level results day

Placed through adjustment: applicants at 28 days after A level results day

Applicant type	Status	2010	2011	2012	2013	2014	2015	2016	2017	2018	2019
Main scheme	Placed (Adjustment)	0	10	20	10	10	10	10	0	10	0

### A.11 Main scheme applicants placed through adjustment: 28 days after A level results day

Placed through adjustment: difference between cycle and 2018 cycle

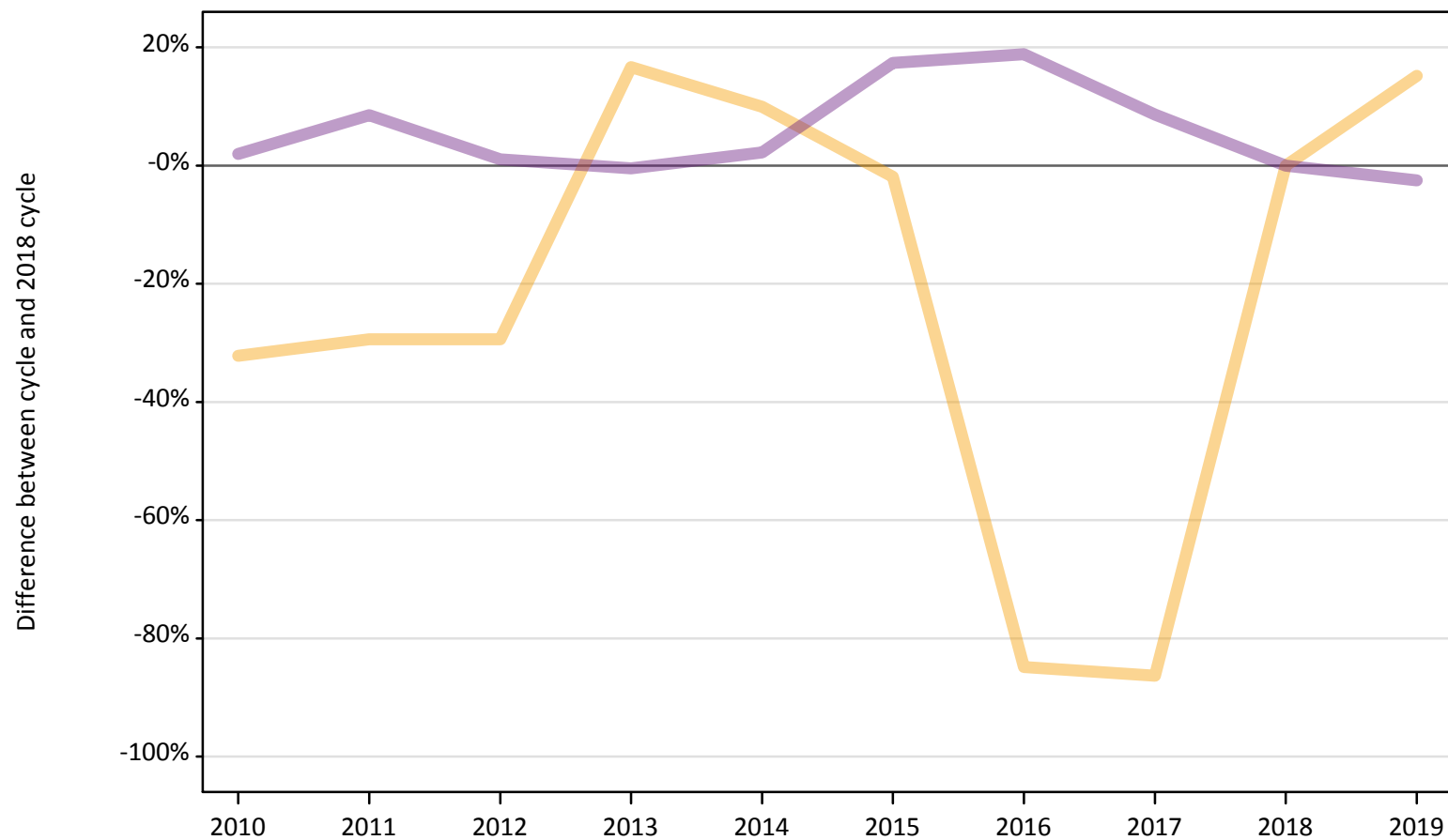
Applicant type	Status	2010	2011	2012	2013	2014	2015	2016	2017	2018	2019
Main scheme	Placed (Adjustment)										

Note: The percentage change is not recorded in the above table for groups with fewer than 10 placed applicants in that cycle or in the 2018 cycle.

### A.12 Main scheme applicants not currently placed from Scotland: 28 days after A level results day

Applicants in unplaced states: difference between cycle and 2018 cycle

— Holding offer  
— Free to be placed in Clearing



Note: The percentage change is not plotted in the above chart for groups with fewer than 30 unplaced applicants in any one cycle.



**A.13 Main scheme applicants not currently placed from Scotland: 28 days after A level results day**

Applicants in unplaced states: applicants at 28 days after A level results day

Applicant type	Status	2010	2011	2012	2013	2014	2015	2016	2017	2018	2019
Main scheme	Holding offer	360	380	380	620	590	520	80	70	530	620
	Free to be placed in Clearing	12,990	13,830	12,880	12,690	13,030	14,960	15,150	13,840	12,740	12,420

**A.14 Main scheme applicants not currently placed from Scotland: 28 days after A level results day**

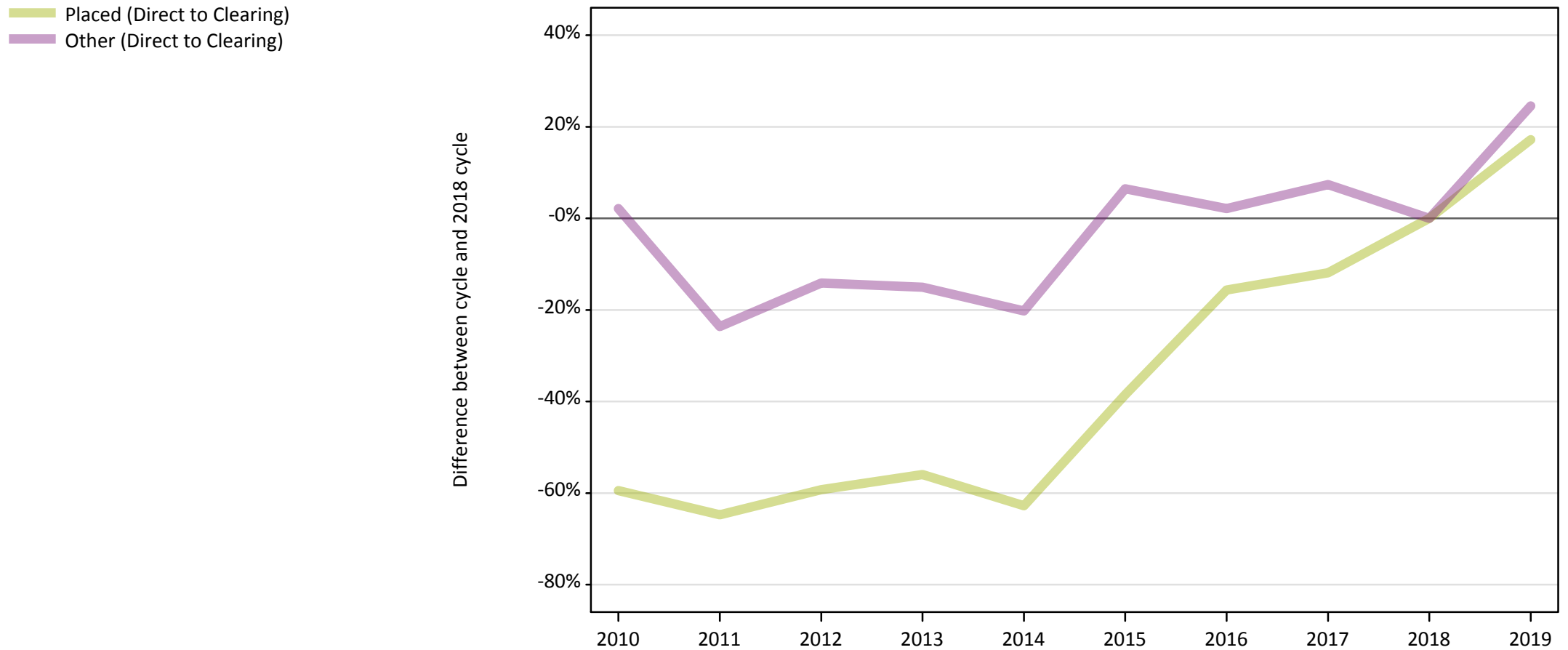
Applicants in unplaced states: difference between cycle and 2018 cycle

Applicant type	Status	2010	2011	2012	2013	2014	2015	2016	2017	2018	2019
Main scheme	Holding offer	-32%	-29%	-29%	17%	10%	-2%	-85%	-86%	0%	15%
	Free to be placed in Clearing	2%	9%	1%	-0%	2%	17%	19%	9%	0%	-3%

Note: The percentage change is not recorded in the above table for groups with fewer than 10 unplaced applicants in that cycle or in the 2018 cycle.

### A.15 Direct to Clearing applicants from Scotland: 28 days after A level results day

Direct to Clearing: difference between cycle and 2018 cycle



Note: The percentage change is not plotted in the above chart for groups with fewer than 30 placed applicants in any one cycle.

### A.16 Direct to Clearing applicants from Scotland: 28 days after A level results day

Direct to Clearing 28 days after A level results day

Applicant type	Status	2010	2011	2012	2013	2014	2015	2016	2017	2018	2019
Direct to Clearing	Placed (Direct to Clearing)	180	160	190	200	170	280	380	400	450	530
	Other (Direct to Clearing)	330	250	280	280	260	350	330	350	330	410

### A.17 Direct to Clearing applicants from Scotland: 28 days after A level results day

Direct to Clearing: difference between cycle and 2018 cycle

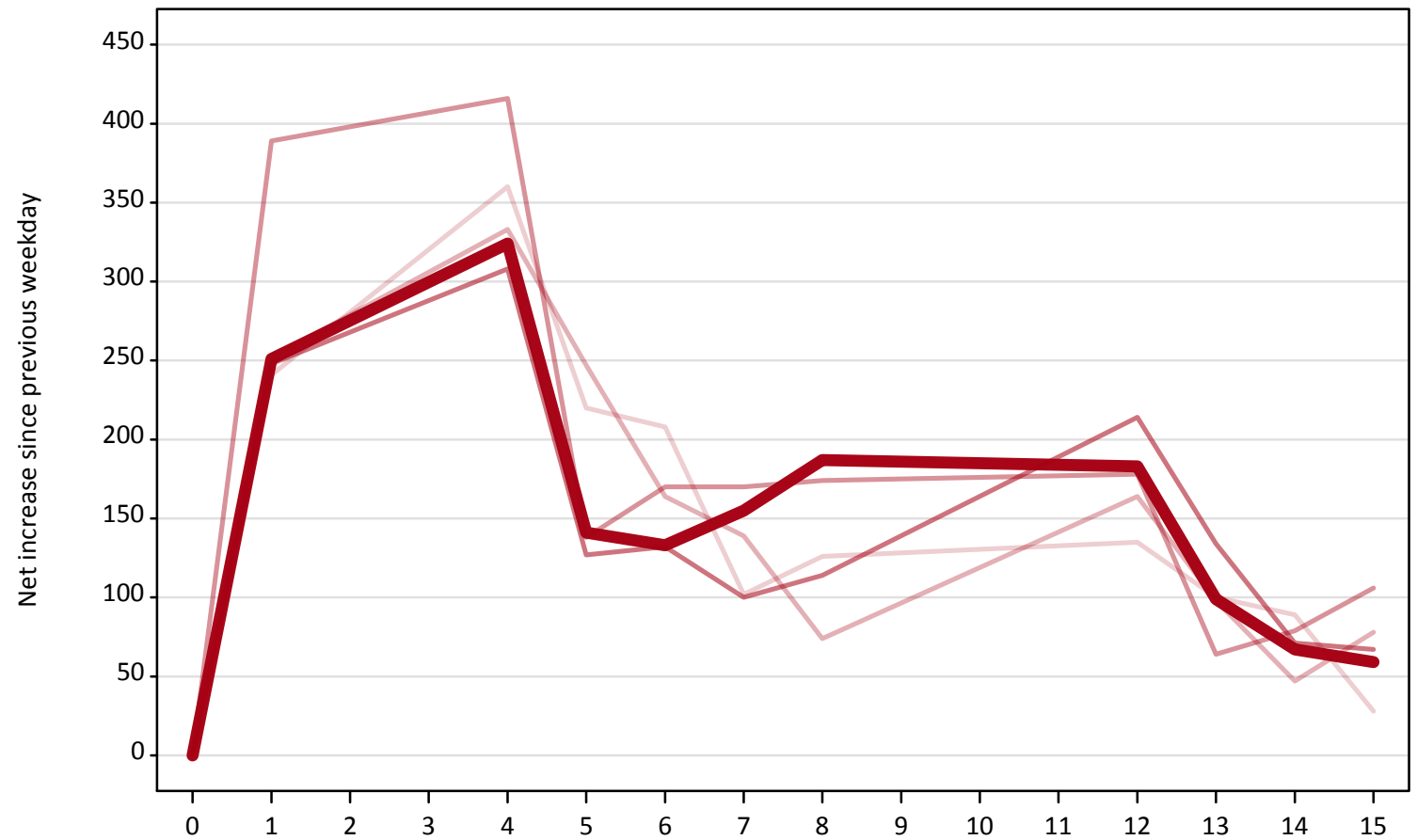
Applicant type	Status	2010	2011	2012	2013	2014	2015	2016	2017	2018	2019
Direct to Clearing	Placed (Direct to Clearing)	-59%	-65%	-59%	-56%	-63%	-39%	-16%	-12%	0%	17%
	Other (Direct to Clearing)	2%	-24%	-14%	-15%	-20%	6%	2%	7%	0%	25%

Note: The percentage change is not recorded in the above table for groups with fewer than 10 placed applicants in that cycle or in the 2018 cycle.

### A.18 All Placed: Daily net change (from Scotland)

Net increase since previous weekday (2019 cycle up to 28 days after A level results day)

- 2015
- 2016
- 2017
- 2018
- 2019**

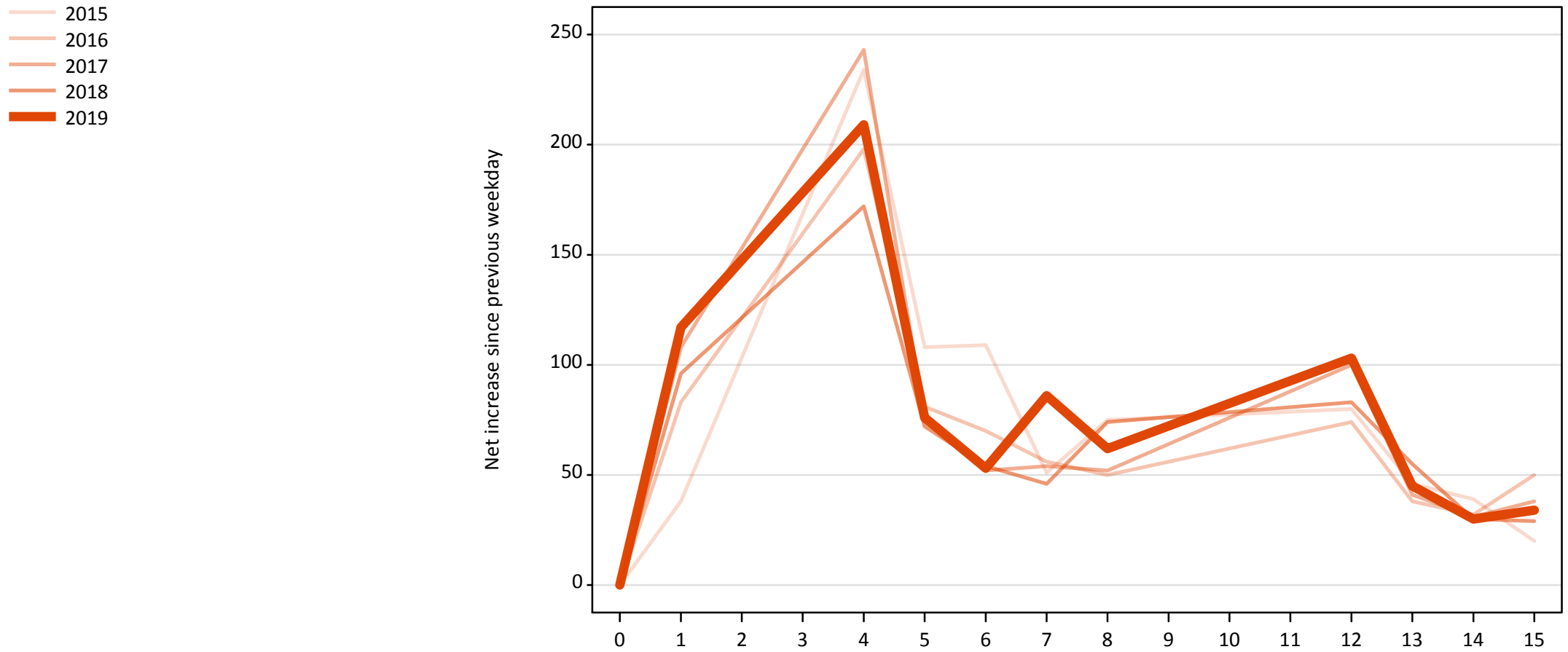


**A.19 All Placed: Daily net change (from Scotland)**

Net increase since previous weekday (2019 cycle up to 28 days after A level results day)

Applicant status, days since A level results day	2015	2016	2017	2018	2019	
All Placed	0	0	0	0	0	
	1	240	250	390	250	250
	4	360	330	420	310	320
	5	220	250	140	130	140
	6	210	160	170	130	130
	7	100	140	170	100	160
	8	130	70	170	110	190
	12	140	160	180	210	180
	13	100	100	60	130	100
	14	90	50	80	70	70
	15	30	80	110	70	60

**A.20 Placed through Clearing only: Daily net change (from Scotland)**  
Net increase since previous weekday (2019 cycle up to 28 days after A level results day)



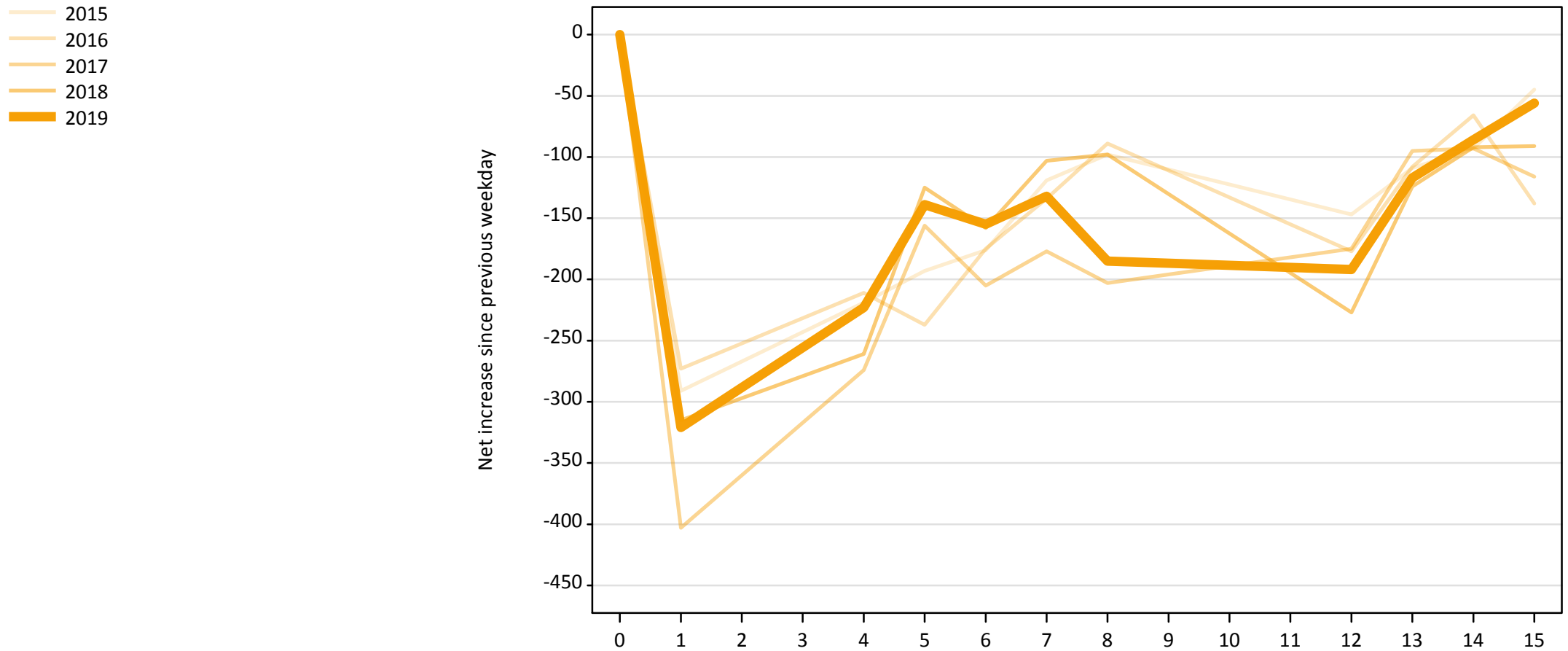
### A.21 Placed through Clearing only: Daily net change (from Scotland)

Net increase since previous weekday (2019 cycle up to 28 days after A level results day)

Applicant status, days since A level results day		2015	2016	2017	2018	2019
Placed through Clearing only	0	0	0	0	0	0
	1	40	80	110	100	120
	4	230	200	240	170	210
	5	110	80	80	70	80
	6	110	70	50	50	50
	7	50	60	50	50	90
	8	80	50	50	70	60
	12	80	70	100	80	100
	13	50	40	40	60	50
	14	40	30	30	30	30
	15	20	50	40	30	30

### A.22 Holding Offer: Daily net change (from Scotland)

Net increase since previous weekday (2019 cycle up to 28 days after A level results day)





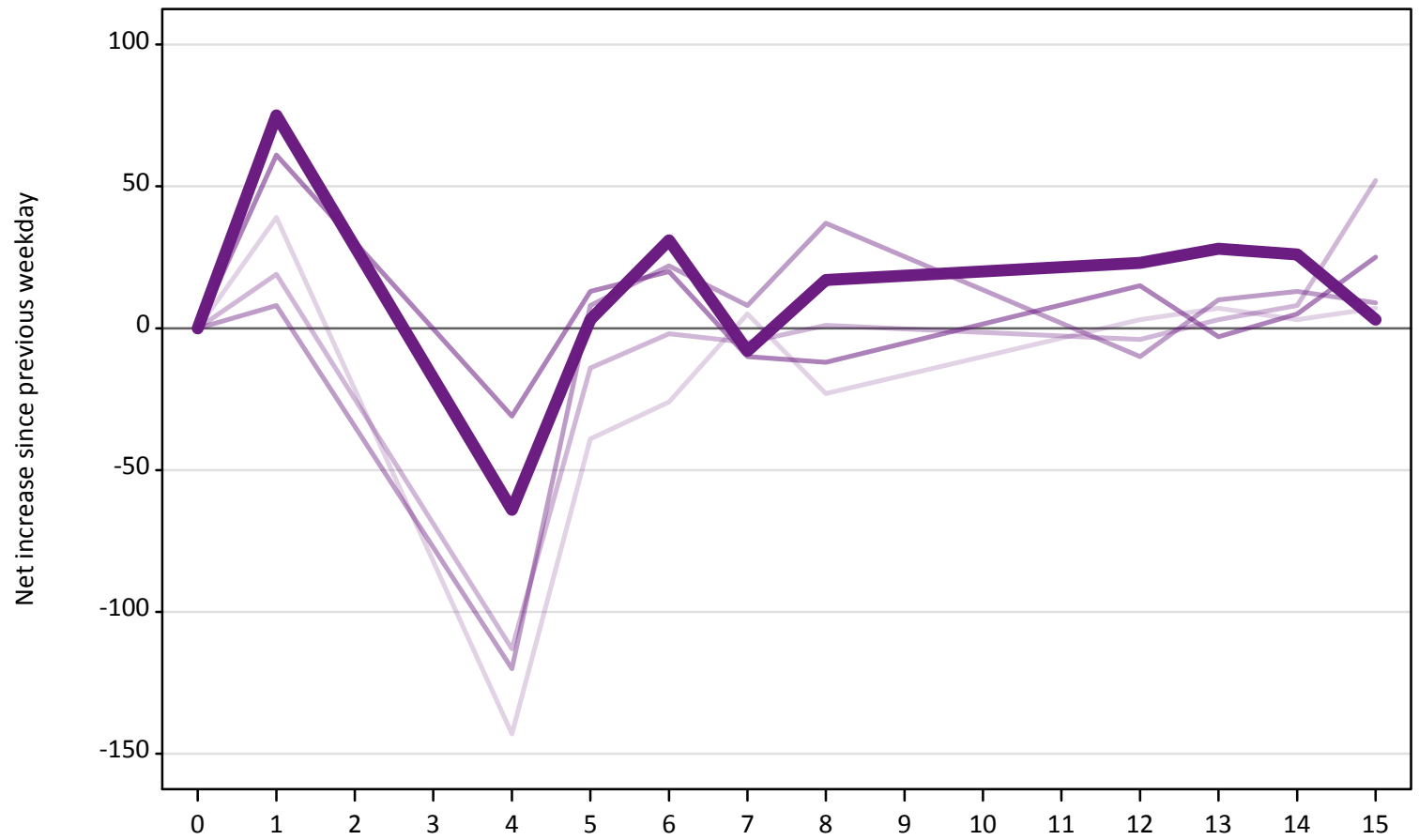
### A.23 Holding Offer: Daily net change (from Scotland)

Net increase since previous weekday (2019 cycle up to 28 days after A level results day)

Applicant status, days since A level results day		2015	2016	2017	2018	2019
Holding Offer	0	0	0	0	0	0
	1	-290	-270	-400	-320	-320
	4	-220	-210	-270	-260	-220
	5	-190	-240	-160	-130	-140
	6	-180	-180	-210	-160	-160
	7	-120	-130	-180	-100	-130
	8	-100	-90	-200	-100	-190
	12	-150	-180	-180	-230	-190
	13	-110	-110	-100	-120	-120
	14	-90	-70	-90	-90	-90
	15	-50	-140	-120	-90	-60

**A.24 Free to be placed in Clearing: Daily net change (from Scotland)**  
Net increase since previous weekday (2019 cycle up to 28 days after A level results day)

- 2015
- 2016
- 2017
- 2018
- 2019



### A.25 Free to be placed in Clearing: Daily net change (from Scotland)

Net increase since previous weekday (2019 cycle up to 28 days after A level results day)

Applicant status, days since A level results day		2015	2016	2017	2018	2019
Free to be placed in Clearing	0	0	0	0	0	0
	1	40	20	10	60	80
	4	-140	-110	-120	-30	-60
	5	-40	-10	10	10	0
	6	-30	0	20	20	30
	7	10	-10	10	-10	-10
	8	-20	0	40	-10	20
	12	0	0	-10	20	20
	13	10	0	10	0	30
	14	0	10	10	10	30
	15	10	50	10	30	0