

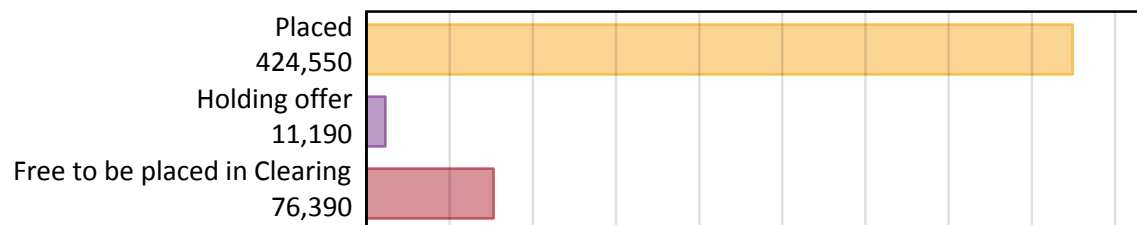
Daily Clearing Analysis: Overview

Analysis at 00:05 on Thursday 12 September 2019 (28 days after A level results day)

A.1 Applicants by type and status from the UK, 2019 cycle

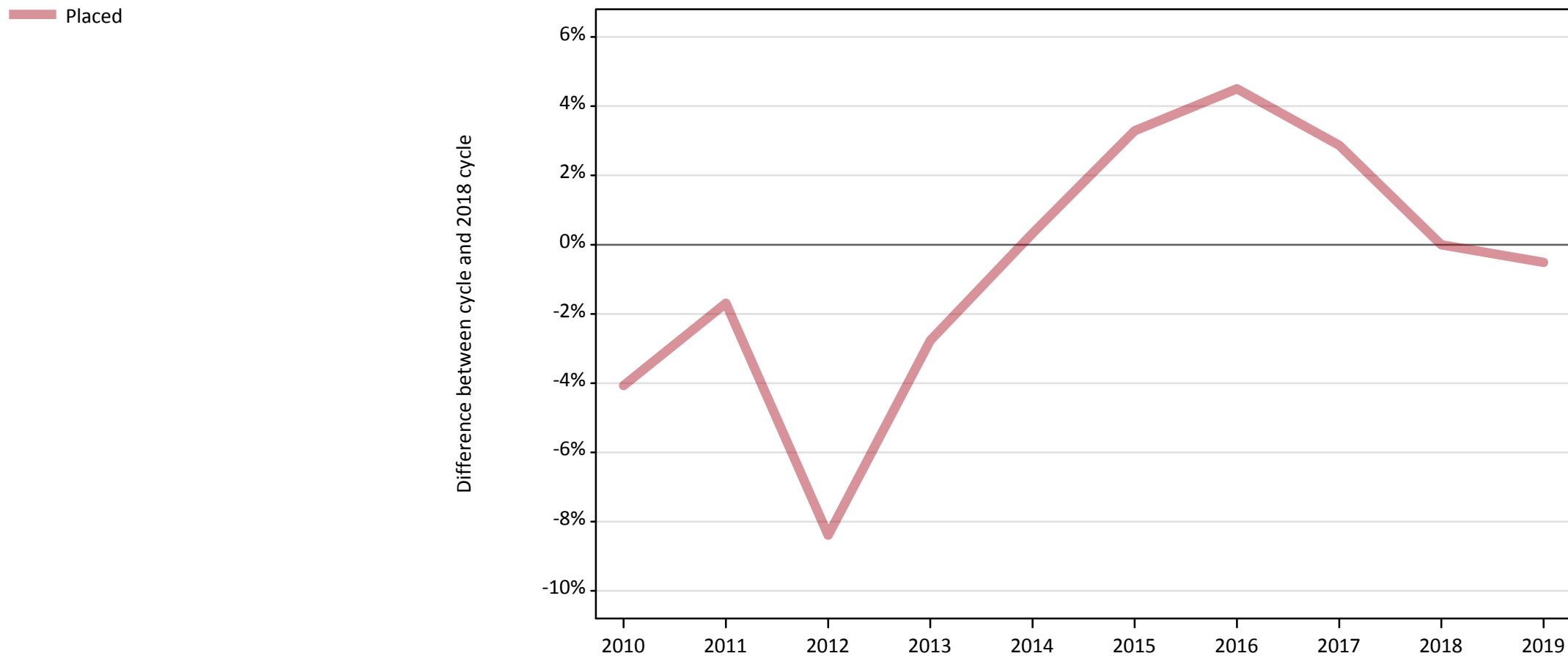
Applicant type	Status	2019
Main scheme	Placed (Clearing)	44,620
	Placed (Adjustment)	530
	Placed (Firm)	326,160
	Placed (Insurance)	27,830
	Placed (Other)	11,080
	Holding offer	11,190
	Free to be placed in Clearing	76,390
Direct to Clearing	Placed (Direct to Clearing)	14,330
	Other (Direct to Clearing)	6,830
All applicants	Placed	424,550

A.2 Summary of applicants who are placed, holding offers or free to be placed in Clearing (the UK)



A.3 All placed applicants from the UK: 28 days after A level results day

All placed applicants: difference between cycle and 2018 cycle



Note: The percentage change is not plotted in the above chart for groups with fewer than 30 placed applicants in any one cycle.

A.4 All placed applicants from the UK: 28 days after A level results day

All placed applicants: applicants at 28 days after A level results day

Applicant type	Status	2010	2011	2012	2013	2014	2015	2016	2017	2018	2019
All applicants	Placed	409,350	419,520	390,910	414,920	428,120	440,770	445,940	438,980	426,730	424,550

A.5 All placed applicants from the UK: 28 days after A level results day

All placed applicants: difference between cycle and 2018 cycle

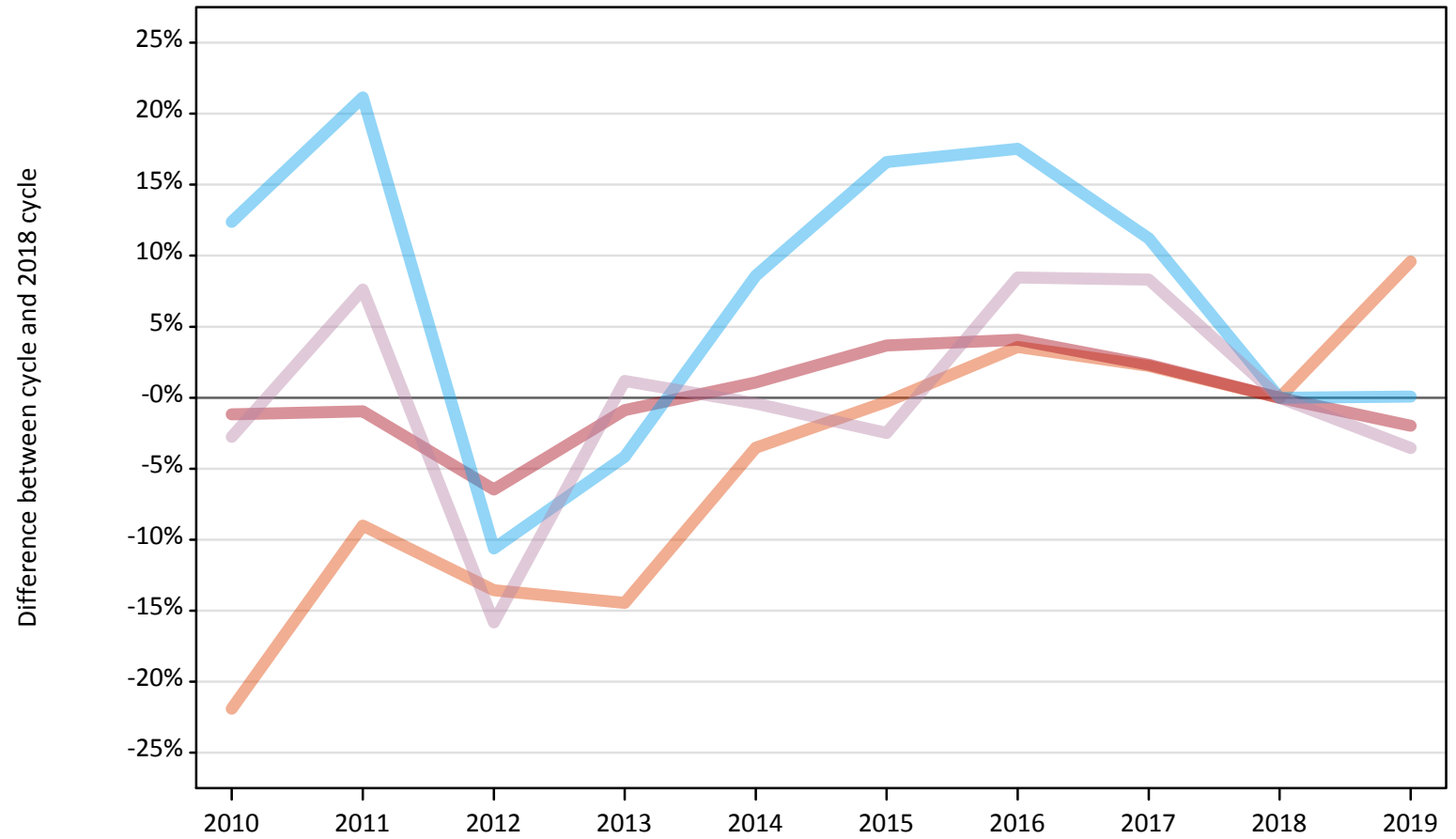
Applicant type	Status	2010	2011	2012	2013	2014	2015	2016	2017	2018	2019
All applicants	Placed	-4%	-2%	-8%	-3%	0%	3%	5%	3%	0%	-1%

Note: The percentage change is not recorded in the above table for groups with fewer than 10 placed applicants in that cycle or in the 2018 cycle.

A.6 Placed main scheme applicants from the UK: 28 days after A level results day

All Main scheme placed routes (excluding Adjustment): difference between cycle and 2018 cycle

- Placed (Clearing)
- Placed (Firm)
- Placed (Insurance)
- Placed (Other)



Note: The percentage change is not plotted in the above chart for groups with fewer than 30 placed applicants in any one cycle.

A.7 Placed main scheme applicants from the UK: 28 days after A level results day

All Main scheme placed routes (excluding Adjustment): applicants at 28 days after A level results day

Applicant type	Status	2010	2011	2012	2013	2014	2015	2016	2017	2018	2019
Main scheme	Placed (Clearing)	31,800	37,040	35,190	34,830	39,280	40,600	42,160	41,620	40,710	44,620
	Placed (Firm)	328,840	329,540	311,180	329,840	336,320	344,940	346,340	340,450	332,740	326,160
	Placed (Insurance)	31,260	33,690	24,860	26,650	30,200	32,420	32,690	30,930	27,810	27,830
	Placed (Other)	11,170	12,370	9,670	11,630	11,440	11,210	12,460	12,450	11,490	11,080

A.8 Placed main scheme applicants from the UK: 28 days after A level results day

All Main scheme placed routes (excluding Adjustment): difference between cycle and 2018 cycle

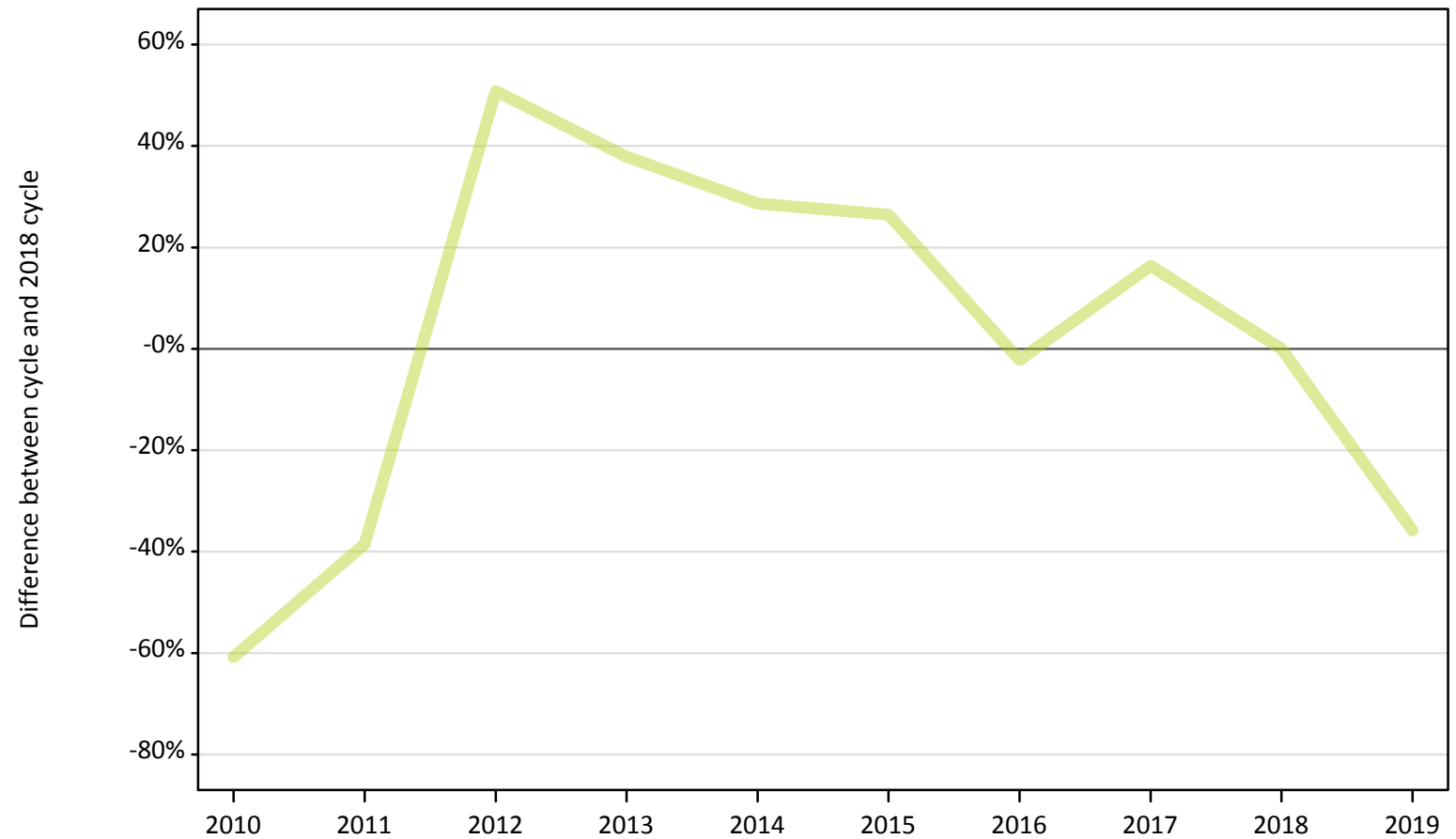
Applicant type	Status	2010	2011	2012	2013	2014	2015	2016	2017	2018	2019
Main scheme	Placed (Clearing)	-22%	-9%	-14%	-14%	-4%	-0%	4%	2%	0%	10%
	Placed (Firm)	-1%	-1%	-6%	-1%	1%	4%	4%	2%	0%	-2%
	Placed (Insurance)	12%	21%	-11%	-4%	9%	17%	18%	11%	0%	0%
	Placed (Other)	-3%	8%	-16%	1%	-0%	-2%	8%	8%	0%	-4%

Note: The percentage change is not recorded in the above table for groups with fewer than 10 placed applicants in that cycle or in the 2018 cycle.

A.9 Main scheme applicants placed through adjustment: 28 days after A level results day

Placed through adjustment: difference between cycle and 2018 cycle

Placed (Adjustment)



Note: The percentage change is not plotted in the above chart for groups with fewer than 30 placed applicants in any one cycle.

A.10 Main scheme applicants placed through adjustment: 28 days after A level results day

Placed through adjustment: applicants at 28 days after A level results day

Applicant type	Status	2010	2011	2012	2013	2014	2015	2016	2017	2018	2019
Main scheme	Placed (Adjustment)	320	510	1,240	1,140	1,060	1,040	810	960	820	530

A.11 Main scheme applicants placed through adjustment: 28 days after A level results day

Placed through adjustment: difference between cycle and 2018 cycle

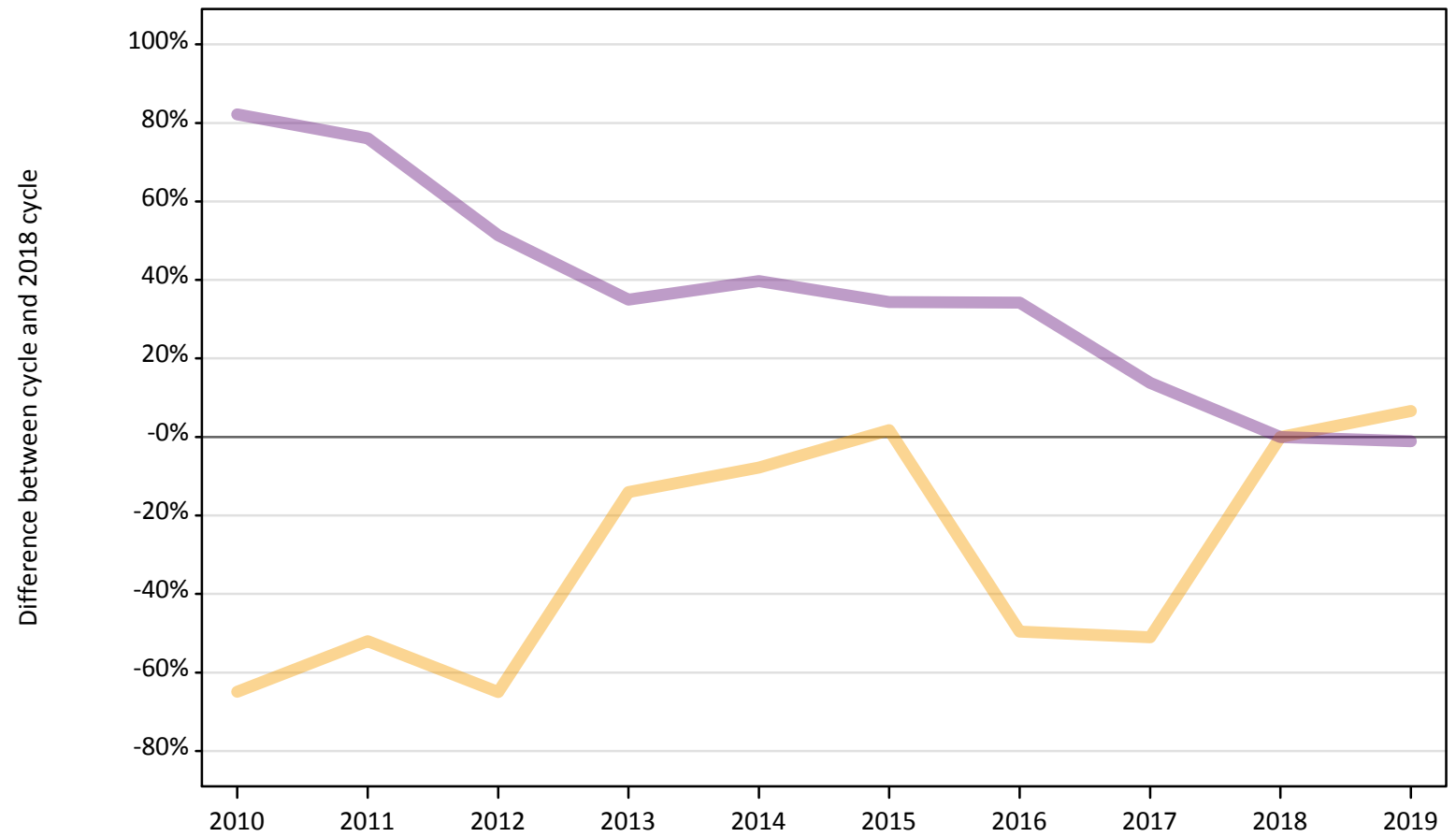
Applicant type	Status	2010	2011	2012	2013	2014	2015	2016	2017	2018	2019
Main scheme	Placed (Adjustment)	-61%	-38%	51%	38%	29%	26%	-2%	16%	0%	-36%

Note: The percentage change is not recorded in the above table for groups with fewer than 10 placed applicants in that cycle or in the 2018 cycle.

A.12 Main scheme applicants not currently placed from the UK: 28 days after A level results day

Applicants in unplaced states: difference between cycle and 2018 cycle

— Holding offer
— Free to be placed in Clearing



Note: The percentage change is not plotted in the above chart for groups with fewer than 30 unplaced applicants in any one cycle.

A.13 Main scheme applicants not currently placed from the UK: 28 days after A level results day

Applicants in unplaced states: applicants at 28 days after A level results day

Applicant type	Status	2010	2011	2012	2013	2014	2015	2016	2017	2018	2019
Main scheme	Holding offer	3,680	5,030	3,670	9,020	9,680	10,680	5,290	5,140	10,500	11,190
	Free to be placed in Clearing	140,690	135,990	116,860	104,200	107,860	103,750	103,640	87,890	77,220	76,390

A.14 Main scheme applicants not currently placed from the UK: 28 days after A level results day

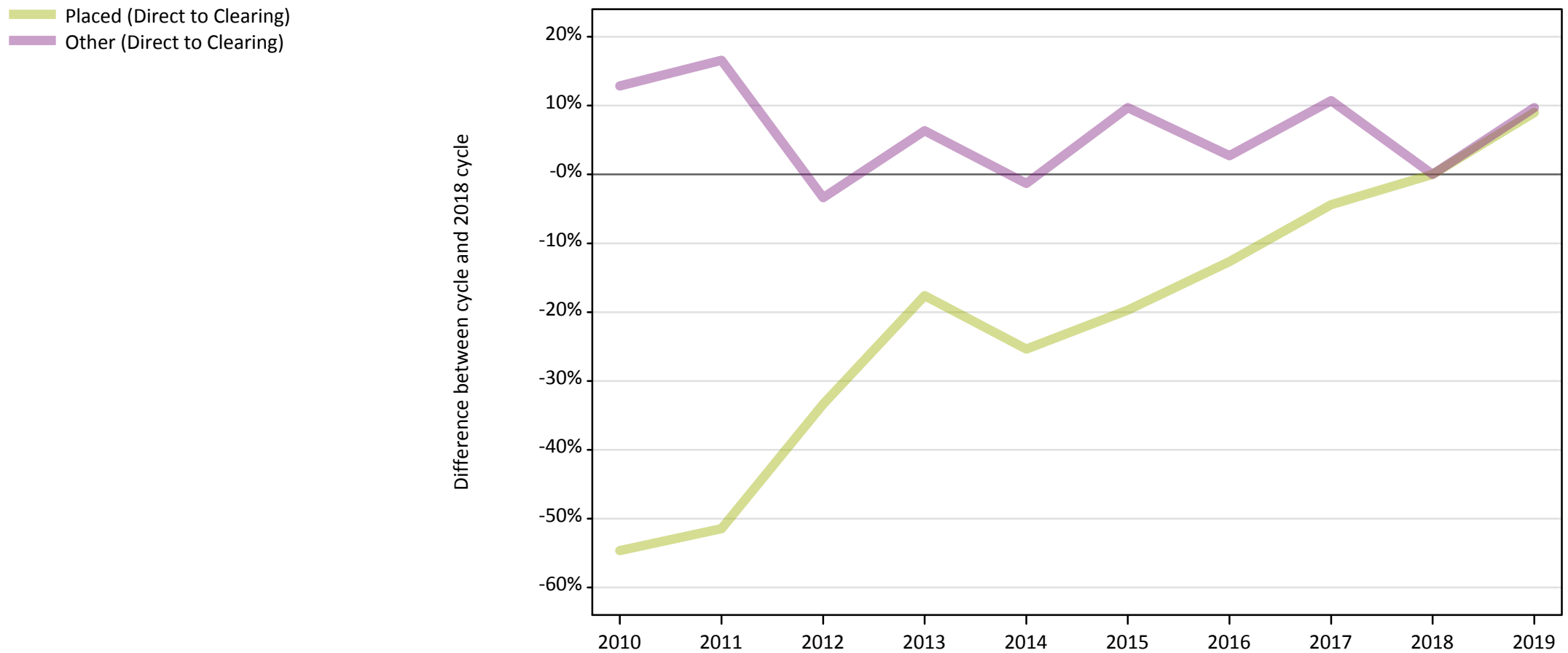
Applicants in unplaced states: difference between cycle and 2018 cycle

Applicant type	Status	2010	2011	2012	2013	2014	2015	2016	2017	2018	2019
Main scheme	Holding offer	-65%	-52%	-65%	-14%	-8%	2%	-50%	-51%	0%	7%
	Free to be placed in Clearing	82%	76%	51%	35%	40%	34%	34%	14%	0%	-1%

Note: The percentage change is not recorded in the above table for groups with fewer than 10 unplaced applicants in that cycle or in the 2018 cycle.

A.15 Direct to Clearing applicants from the UK: 28 days after A level results day

Direct to Clearing: difference between cycle and 2018 cycle



Note: The percentage change is not plotted in the above chart for groups with fewer than 30 placed applicants in any one cycle.

A.16 Direct to Clearing applicants from the UK: 28 days after A level results day

Direct to Clearing 28 days after A level results day

Applicant type	Status	2010	2011	2012	2013	2014	2015	2016	2017	2018	2019
Direct to Clearing	Placed (Direct to Clearing)	5,960	6,390	8,760	10,830	9,820	10,560	11,480	12,570	13,150	14,330
	Other (Direct to Clearing)	7,020	7,260	6,010	6,620	6,140	6,830	6,390	6,890	6,220	6,830

A.17 Direct to Clearing applicants from the UK: 28 days after A level results day

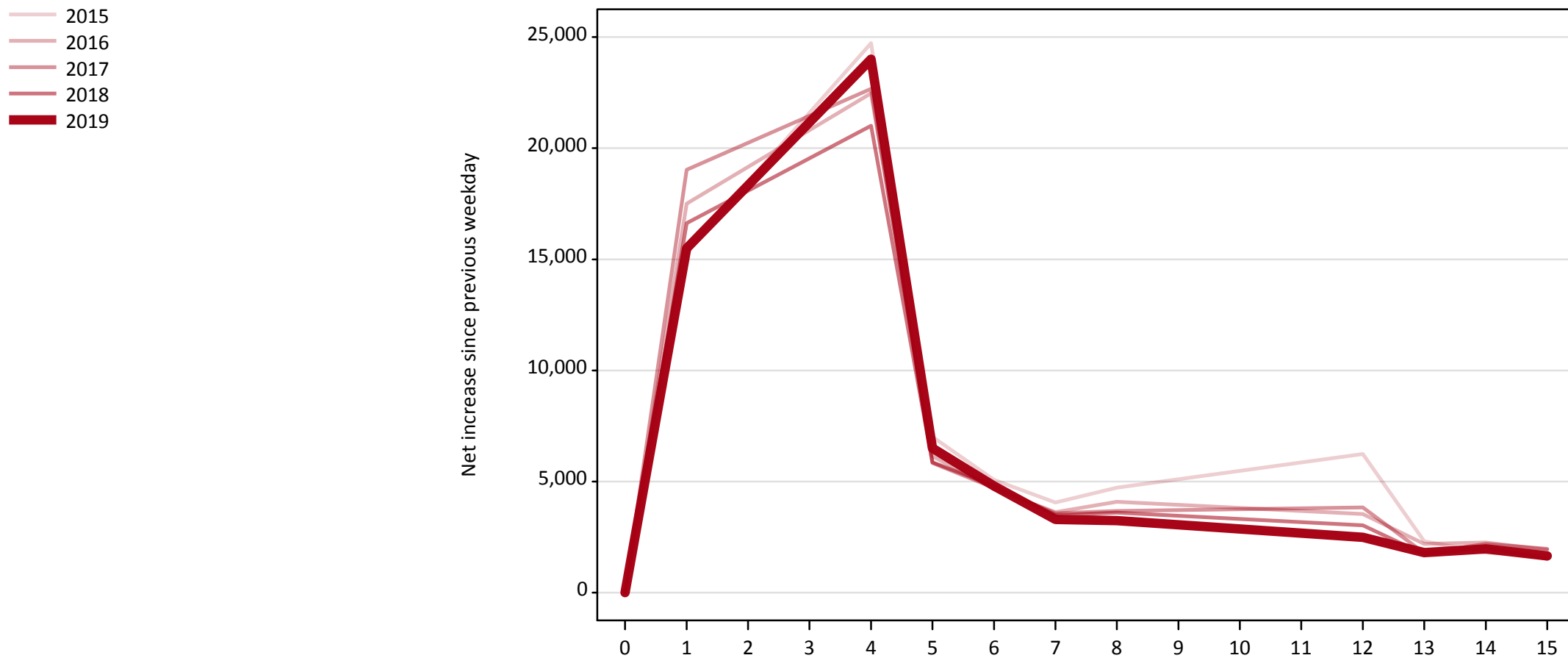
Direct to Clearing: difference between cycle and 2018 cycle

Applicant type	Status	2010	2011	2012	2013	2014	2015	2016	2017	2018	2019
Direct to Clearing	Placed (Direct to Clearing)	-55%	-51%	-33%	-18%	-25%	-20%	-13%	-4%	0%	9%
	Other (Direct to Clearing)	13%	17%	-3%	6%	-1%	10%	3%	11%	0%	10%

Note: The percentage change is not recorded in the above table for groups with fewer than 10 placed applicants in that cycle or in the 2018 cycle.

A.18 All Placed: Daily net change (from the UK)

Net increase since previous weekday (2019 cycle up to 28 days after A level results day)

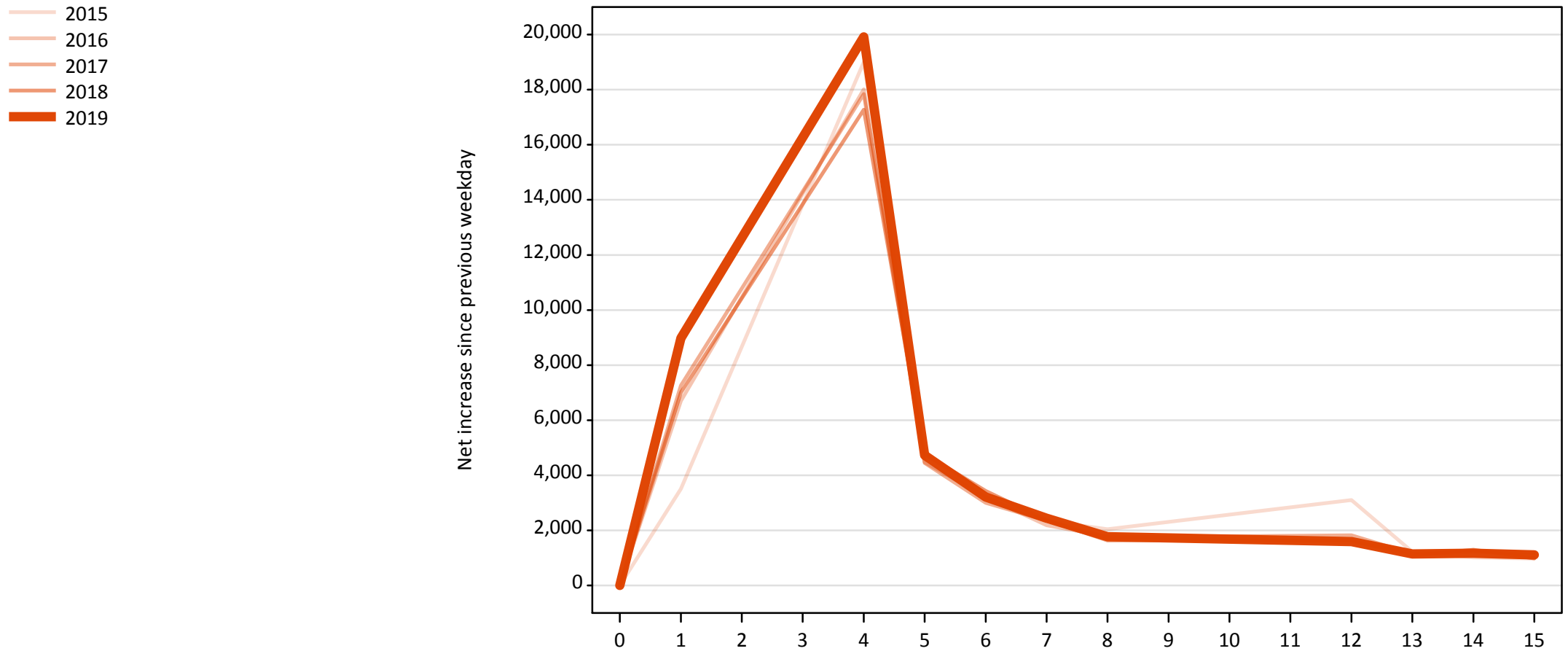


A.19 All Placed: Daily net change (from the UK)

Net increase since previous weekday (2019 cycle up to 28 days after A level results day)

Applicant status, days since A level results day	2015	2016	2017	2018	2019	
All Placed	0	0	0	0	0	
	1	15,350	17,510	19,030	16,620	15,490
	4	24,730	22,470	22,670	21,010	24,010
	5	7,020	6,140	5,840	5,870	6,510
	6	5,070	4,660	4,710	4,810	4,800
	7	4,060	3,630	3,570	3,500	3,300
	8	4,720	4,090	3,670	3,600	3,240
	12	6,240	3,530	3,840	3,020	2,490
	13	2,310	2,200	1,780	1,720	1,800
	14	1,810	2,260	2,200	2,030	1,970
	15	1,680	1,920	1,970	1,530	1,650

A.20 Placed through Clearing only: Daily net change (from the UK)
Net increase since previous weekday (2019 cycle up to 28 days after A level results day)

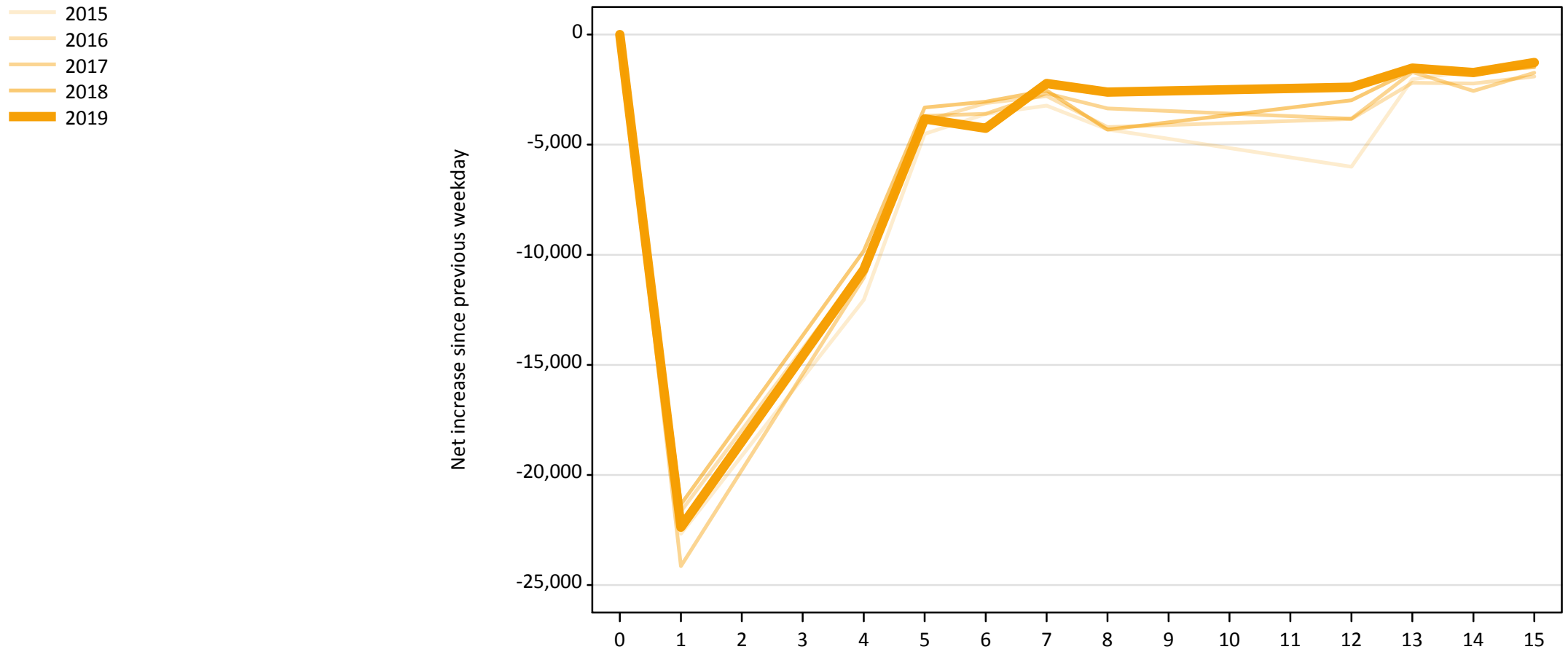


A.21 Placed through Clearing only: Daily net change (from the UK)

Net increase since previous weekday (2019 cycle up to 28 days after A level results day)

Applicant status, days since A level results day		2015	2016	2017	2018	2019
Placed through Clearing only	0	0	0	0	0	0
	1	3,510	6,700	7,260	7,010	8,980
	4	19,000	18,010	17,840	17,270	19,910
	5	4,820	4,470	4,450	4,770	4,730
	6	3,170	3,220	3,000	3,430	3,210
	7	2,350	2,180	2,360	2,370	2,440
	8	2,040	1,780	1,740	1,640	1,770
	12	3,100	1,570	1,820	1,640	1,600
	13	1,220	1,210	1,150	1,080	1,140
	14	1,020	1,270	1,220	1,300	1,170
	15	980	1,090	1,200	980	1,110

A.22 Holding Offer: Daily net change (from the UK)
Net increase since previous weekday (2019 cycle up to 28 days after A level results day)

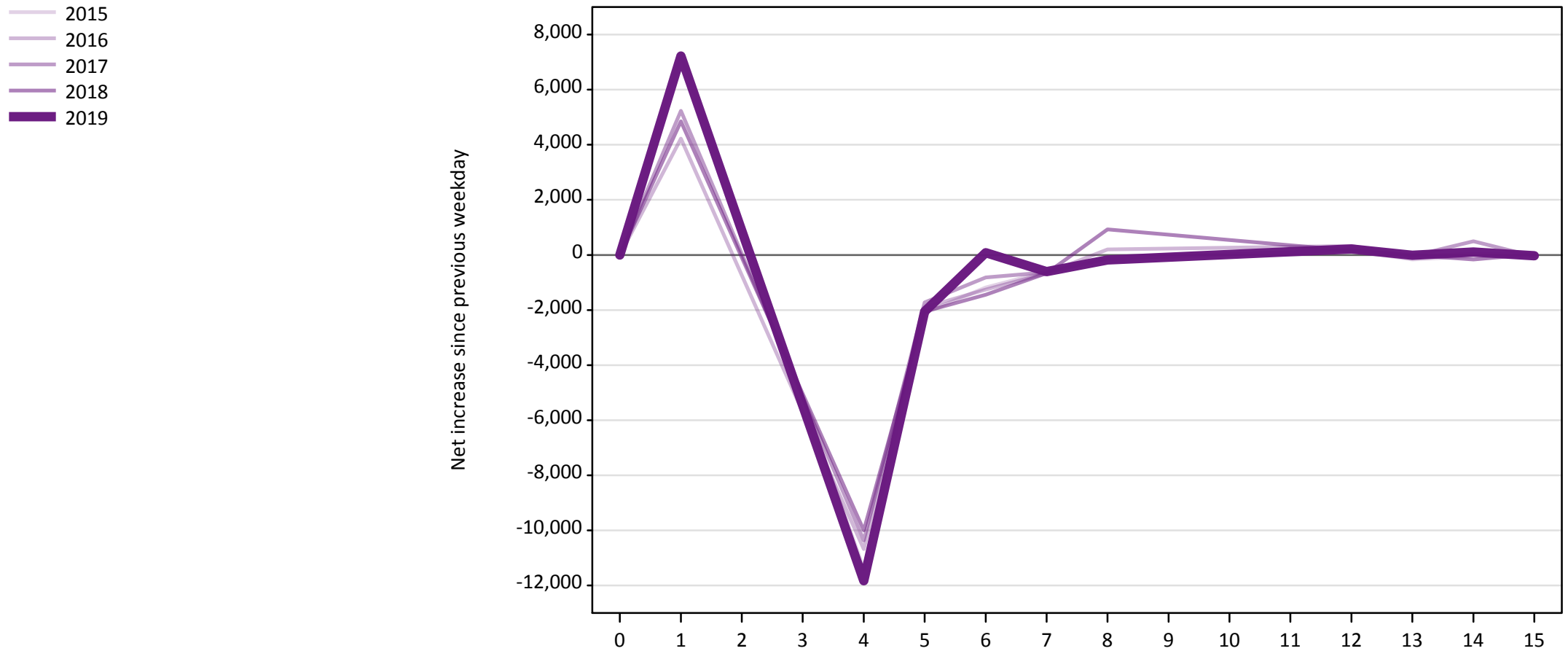


A.23 Holding Offer: Daily net change (from the UK)

Net increase since previous weekday (2019 cycle up to 28 days after A level results day)

Applicant status, days since A level results day	2015	2016	2017	2018	2019	
Holding Offer	0	0	0	0	0	
	1	-22,670	-21,650	-24,140	-21,330	-22,370
	4	-12,050	-10,570	-11,040	-9,830	-10,670
	5	-4,510	-3,920	-3,690	-3,320	-3,840
	6	-3,610	-3,110	-3,600	-3,040	-4,250
	7	-3,230	-2,790	-2,670	-2,540	-2,220
	8	-4,310	-4,200	-3,360	-4,320	-2,620
	12	-6,000	-3,830	-3,830	-2,980	-2,390
	13	-2,030	-2,190	-1,700	-1,620	-1,520
	14	-1,640	-2,220	-2,560	-1,700	-1,720
	15	-1,470	-1,900	-1,740	-1,480	-1,270

A.24 Free to be placed in Clearing: Daily net change (from the UK)
Net increase since previous weekday (2019 cycle up to 28 days after A level results day)



A.25 Free to be placed in Clearing: Daily net change (from the UK)

Net increase since previous weekday (2019 cycle up to 28 days after A level results day)

Applicant status, days since A level results day		2015	2016	2017	2018	2019
Free to be placed in Clearing	0	0	0	0	0	0
	1	7,260	4,220	5,230	4,850	7,220
	4	-11,400	-10,680	-10,370	-10,000	-11,830
	5	-2,100	-1,900	-1,730	-2,050	-2,060
	6	-1,180	-1,260	-820	-1,450	80
	7	-610	-660	-630	-660	-610
	8	-150	200	-130	920	-180
	12	150	320	190	160	220
	13	-170	-50	-40	0	-10
	14	-50	40	500	-160	100
	15	-40	60	-50	30	-30