

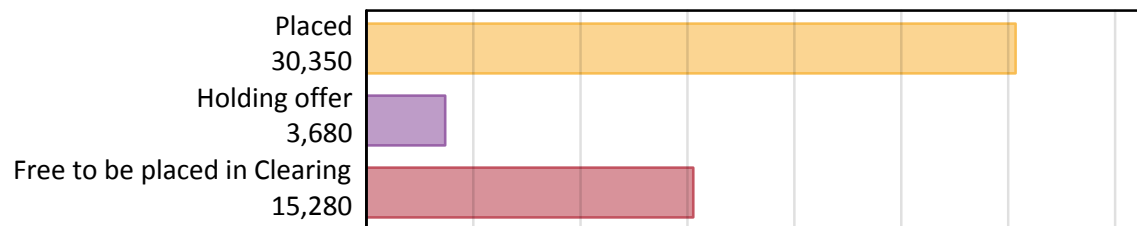
# Daily Clearing Analysis: Overview

Analysis at 00:05 on Thursday 12 September 2019 (28 days after A level results day)

## A.1 Applicants by type and status from the EU - excluding UK, 2019 cycle

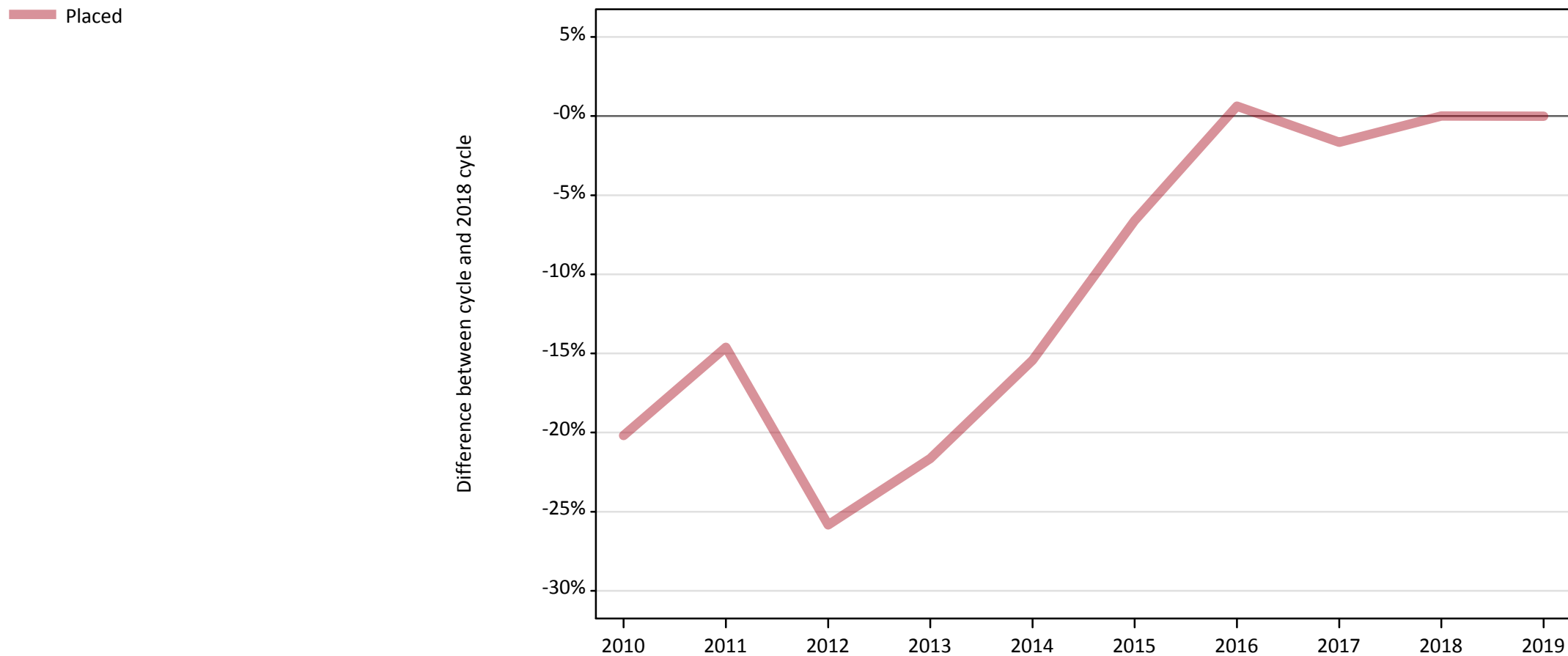
| Applicant type     | Status                        | 2019   |
|--------------------|-------------------------------|--------|
| Main scheme        | Placed (Clearing)             | 1,670  |
|                    | Placed (Adjustment)           | 20     |
|                    | Placed (Firm)                 | 24,430 |
|                    | Placed (Insurance)            | 2,250  |
|                    | Placed (Other)                | 1,400  |
|                    | Holding offer                 | 3,680  |
|                    | Free to be placed in Clearing | 15,280 |
| Direct to Clearing | Placed (Direct to Clearing)   | 580    |
|                    | Other (Direct to Clearing)    | 380    |
| All applicants     | Placed                        | 30,350 |

## A.2 Summary of applicants who are placed, holding offers or free to be placed in Clearing ( the EU - excluding UK )



### A.3 All placed applicants from the EU - excluding UK: 28 days after A level results day

All placed applicants: difference between cycle and 2018 cycle



Note: The percentage change is not plotted in the above chart for groups with fewer than 30 placed applicants in any one cycle.

#### A.4 All placed applicants from the EU - excluding UK: 28 days after A level results day

All placed applicants: applicants at 28 days after A level results day

| Applicant type | Status | 2010   | 2011   | 2012   | 2013   | 2014   | 2015   | 2016   | 2017   | 2018   | 2019   |
|----------------|--------|--------|--------|--------|--------|--------|--------|--------|--------|--------|--------|
| All applicants | Placed | 24,230 | 25,920 | 22,510 | 23,780 | 25,670 | 28,350 | 30,540 | 29,850 | 30,350 | 30,350 |

#### A.5 All placed applicants from the EU - excluding UK: 28 days after A level results day

All placed applicants: difference between cycle and 2018 cycle

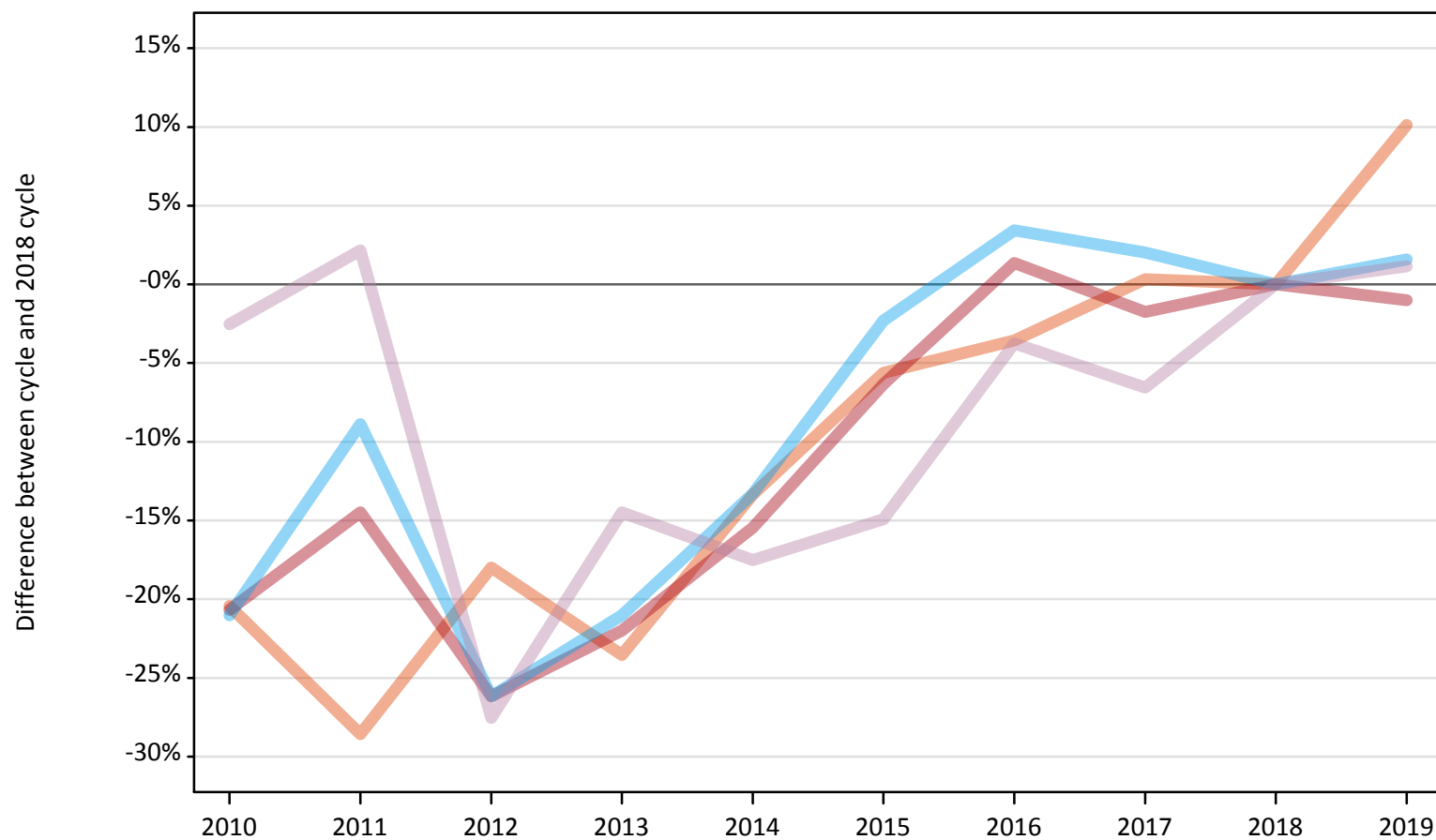
| Applicant type | Status | 2010 | 2011 | 2012 | 2013 | 2014 | 2015 | 2016 | 2017 | 2018 | 2019 |
|----------------|--------|------|------|------|------|------|------|------|------|------|------|
| All applicants | Placed | -20% | -15% | -26% | -22% | -15% | -7%  | 1%   | -2%  | 0%   | -0%  |

Note: The percentage change is not recorded in the above table for groups with fewer than 10 placed applicants in that cycle or in the 2018 cycle.

## A.6 Placed main scheme applicants from the EU - excluding UK: 28 days after A level results day

All Main scheme placed routes (excluding Adjustment): difference between cycle and 2018 cycle

- Placed (Clearing)
- Placed (Firm)
- Placed (Insurance)
- Placed (Other)



Note: The percentage change is not plotted in the above chart for groups with fewer than 30 placed applicants in any one cycle.

### A.7 Placed main scheme applicants from the EU - excluding UK: 28 days after A level results day

All Main scheme placed routes (excluding Adjustment): applicants at 28 days after A level results day

| Applicant type | Status             | 2010   | 2011   | 2012   | 2013   | 2014   | 2015   | 2016   | 2017   | 2018   | 2019   |
|----------------|--------------------|--------|--------|--------|--------|--------|--------|--------|--------|--------|--------|
| Main scheme    | Placed (Clearing)  | 1,200  | 1,080  | 1,240  | 1,160  | 1,310  | 1,430  | 1,460  | 1,520  | 1,510  | 1,670  |
|                | Placed (Firm)      | 19,580 | 21,100 | 18,220 | 19,250 | 20,870 | 23,110 | 25,020 | 24,250 | 24,680 | 24,430 |
|                | Placed (Insurance) | 1,750  | 2,020  | 1,640  | 1,750  | 1,920  | 2,170  | 2,290  | 2,260  | 2,220  | 2,250  |
|                | Placed (Other)     | 1,350  | 1,420  | 1,010  | 1,190  | 1,140  | 1,180  | 1,340  | 1,300  | 1,390  | 1,400  |

### A.8 Placed main scheme applicants from the EU - excluding UK: 28 days after A level results day

All Main scheme placed routes (excluding Adjustment): difference between cycle and 2018 cycle

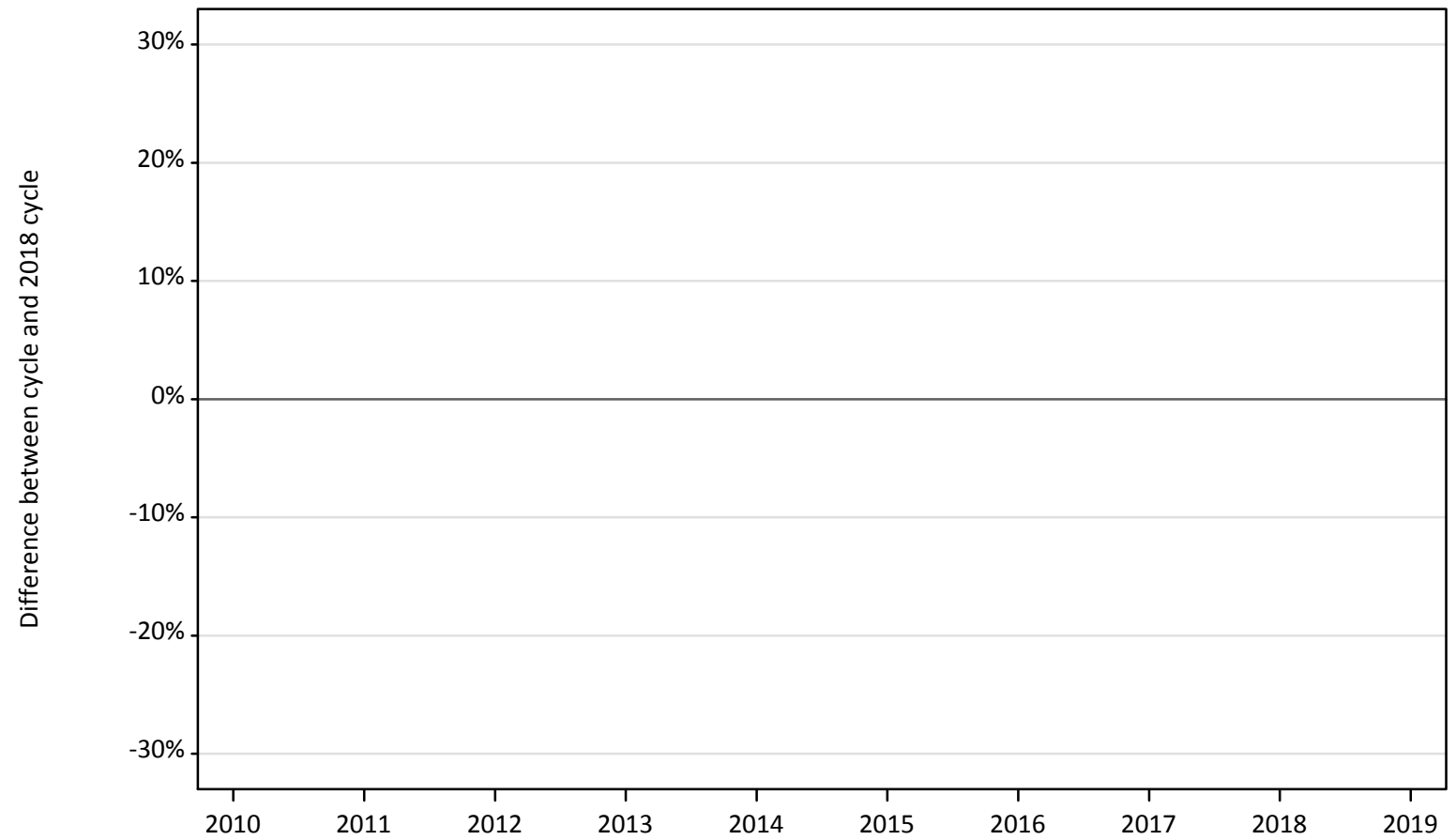
| Applicant type | Status             | 2010 | 2011 | 2012 | 2013 | 2014 | 2015 | 2016 | 2017 | 2018 | 2019 |
|----------------|--------------------|------|------|------|------|------|------|------|------|------|------|
| Main scheme    | Placed (Clearing)  | -20% | -29% | -18% | -24% | -13% | -6%  | -4%  | 0%   | 0%   | 10%  |
|                | Placed (Firm)      | -21% | -14% | -26% | -22% | -15% | -6%  | 1%   | -2%  | 0%   | -1%  |
|                | Placed (Insurance) | -21% | -9%  | -26% | -21% | -13% | -2%  | 3%   | 2%   | 0%   | 2%   |
|                | Placed (Other)     | -3%  | 2%   | -28% | -14% | -18% | -15% | -4%  | -7%  | 0%   | 1%   |

Note: The percentage change is not recorded in the above table for groups with fewer than 10 placed applicants in that cycle or in the 2018 cycle.

### A.9 Main scheme applicants placed through adjustment: 28 days after A level results day

Placed through adjustment: difference between cycle and 2018 cycle

Placed (Adjustment)



Note: The percentage change is not plotted in the above chart for groups with fewer than 30 placed applicants in any one cycle.

### A.10 Main scheme applicants placed through adjustment: 28 days after A level results day

Placed through adjustment: applicants at 28 days after A level results day

| Applicant type | Status              | 2010 | 2011 | 2012 | 2013 | 2014 | 2015 | 2016 | 2017 | 2018 | 2019 |
|----------------|---------------------|------|------|------|------|------|------|------|------|------|------|
| Main scheme    | Placed (Adjustment) | 10   | 10   | 40   | 40   | 40   | 40   | 40   | 40   | 30   | 20   |

### A.11 Main scheme applicants placed through adjustment: 28 days after A level results day

Placed through adjustment: difference between cycle and 2018 cycle

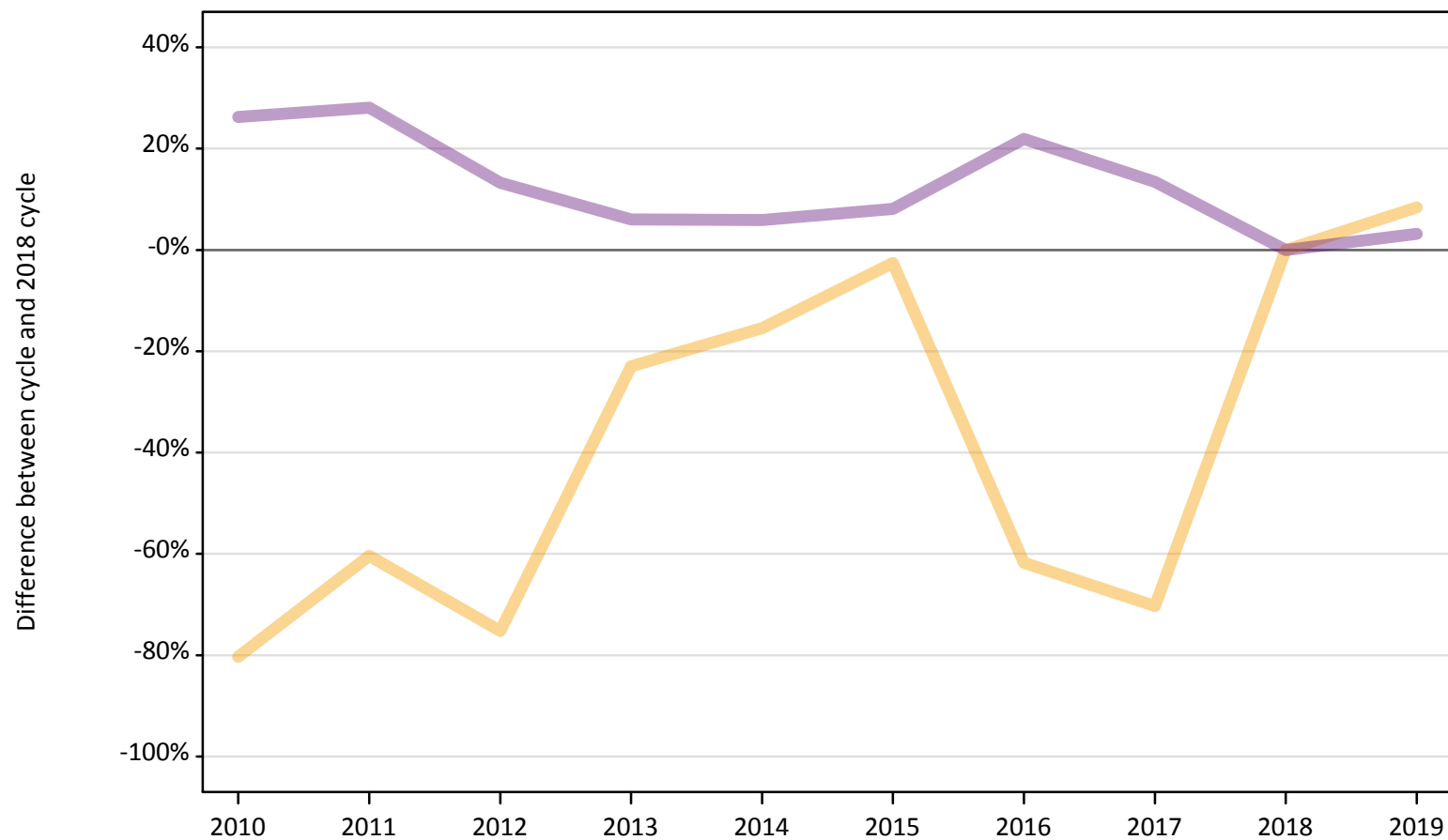
| Applicant type | Status              | 2010 | 2011 | 2012 | 2013 | 2014 | 2015 | 2016 | 2017 | 2018 | 2019 |
|----------------|---------------------|------|------|------|------|------|------|------|------|------|------|
| Main scheme    | Placed (Adjustment) | -56% | -63% | 30%  | 37%  | 33%  | 44%  | 41%  | 56%  | 0%   | -30% |

Note: The percentage change is not recorded in the above table for groups with fewer than 10 placed applicants in that cycle or in the 2018 cycle.

## A.12 Main scheme applicants not currently placed from the EU - excluding UK: 28 days after A level results day

Applicants in unplaced states: difference between cycle and 2018 cycle

— Holding offer  
— Free to be placed in Clearing



Note: The percentage change is not plotted in the above chart for groups with fewer than 30 unplaced applicants in any one cycle.



**A.13 Main scheme applicants not currently placed from the EU - excluding UK: 28 days after A level results day**

Applicants in unplaced states: applicants at 28 days after A level results day

| Applicant type | Status                        | 2010   | 2011   | 2012   | 2013   | 2014   | 2015   | 2016   | 2017   | 2018   | 2019   |
|----------------|-------------------------------|--------|--------|--------|--------|--------|--------|--------|--------|--------|--------|
| Main scheme    | Holding offer                 | 670    | 1,340  | 840    | 2,610  | 2,870  | 3,310  | 1,300  | 1,010  | 3,390  | 3,680  |
|                | Free to be placed in Clearing | 18,700 | 18,970 | 16,780 | 15,700 | 15,690 | 16,010 | 18,060 | 16,800 | 14,810 | 15,280 |

**A.14 Main scheme applicants not currently placed from the EU - excluding UK: 28 days after A level results day**

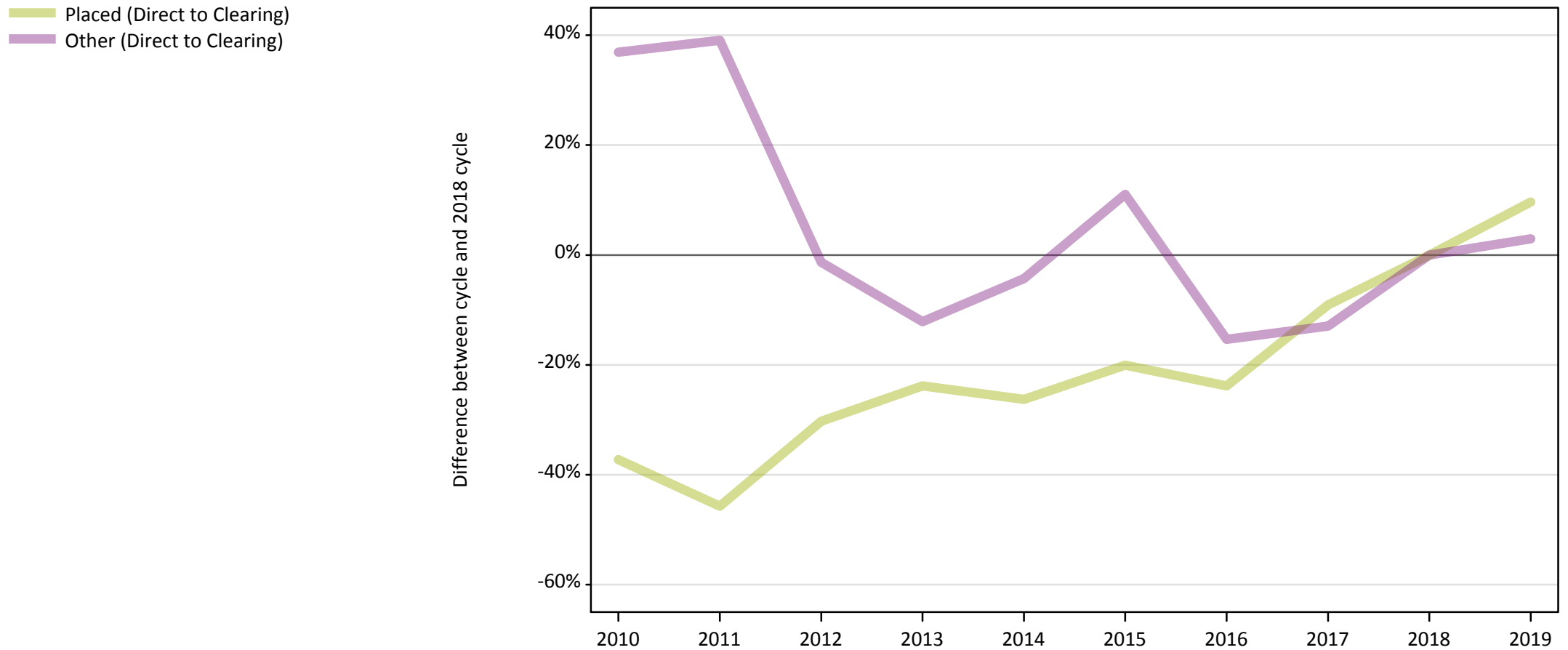
Applicants in unplaced states: difference between cycle and 2018 cycle

| Applicant type | Status                        | 2010 | 2011 | 2012 | 2013 | 2014 | 2015 | 2016 | 2017 | 2018 | 2019 |
|----------------|-------------------------------|------|------|------|------|------|------|------|------|------|------|
| Main scheme    | Holding offer                 | -80% | -60% | -75% | -23% | -15% | -3%  | -62% | -70% | 0%   | 8%   |
|                | Free to be placed in Clearing | 26%  | 28%  | 13%  | 6%   | 6%   | 8%   | 22%  | 13%  | 0%   | 3%   |

Note: The percentage change is not recorded in the above table for groups with fewer than 10 unplaced applicants in that cycle or in the 2018 cycle.

### A.15 Direct to Clearing applicants from the EU - excluding UK: 28 days after A level results day

Direct to Clearing: difference between cycle and 2018 cycle



Note: The percentage change is not plotted in the above chart for groups with fewer than 30 placed applicants in any one cycle.

### A.16 Direct to Clearing applicants from the EU - excluding UK: 28 days after A level results day

Direct to Clearing 28 days after A level results day

| Applicant type     | Status                      | 2010 | 2011 | 2012 | 2013 | 2014 | 2015 | 2016 | 2017 | 2018 | 2019 |
|--------------------|-----------------------------|------|------|------|------|------|------|------|------|------|------|
| Direct to Clearing | Placed (Direct to Clearing) | 330  | 290  | 370  | 400  | 390  | 420  | 400  | 480  | 530  | 580  |
|                    | Other (Direct to Clearing)  | 510  | 520  | 370  | 330  | 360  | 410  | 310  | 320  | 370  | 380  |

### A.17 Direct to Clearing applicants from the EU - excluding UK: 28 days after A level results day

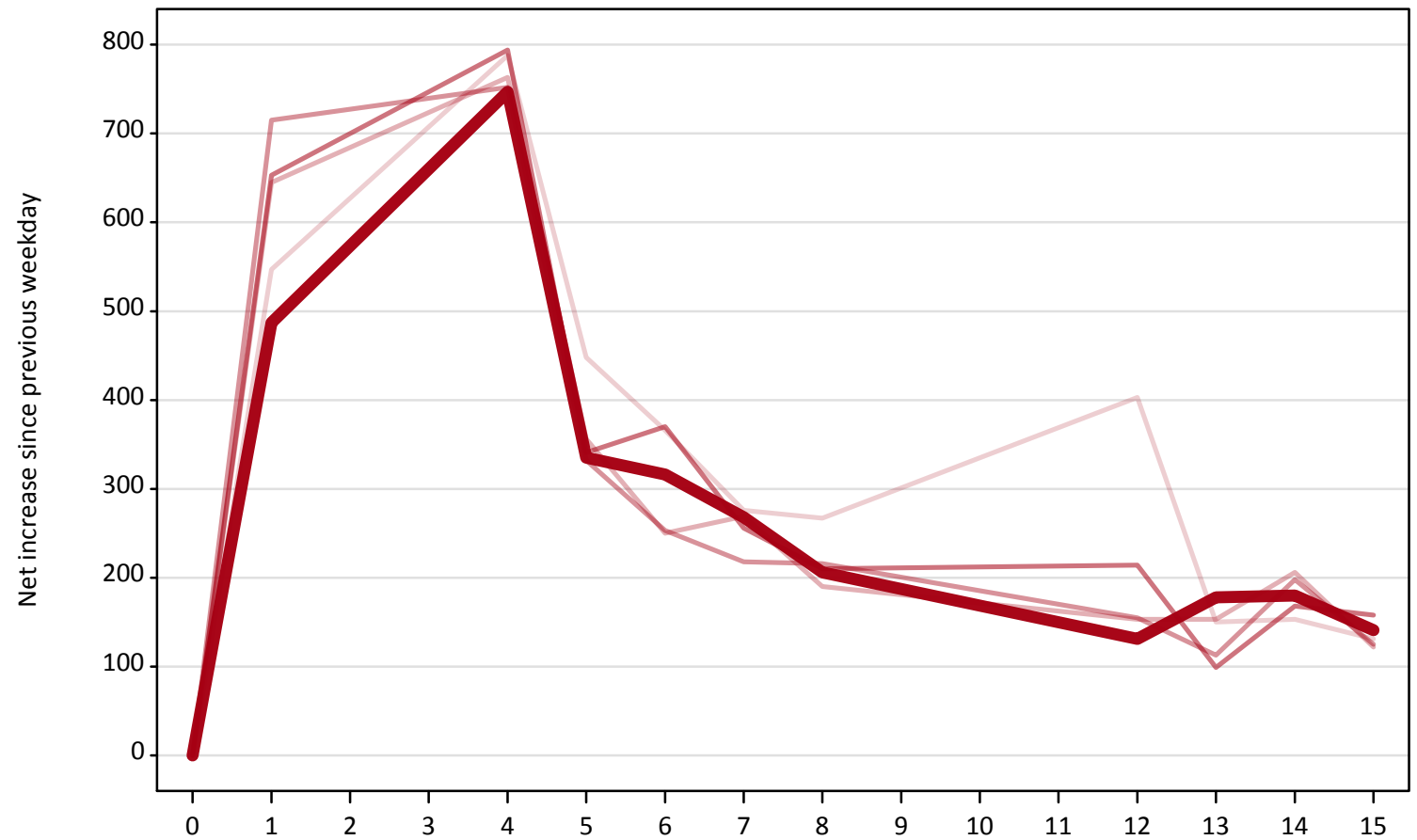
Direct to Clearing: difference between cycle and 2018 cycle

| Applicant type     | Status                      | 2010 | 2011 | 2012 | 2013 | 2014 | 2015 | 2016 | 2017 | 2018 | 2019 |
|--------------------|-----------------------------|------|------|------|------|------|------|------|------|------|------|
| Direct to Clearing | Placed (Direct to Clearing) | -37% | -46% | -30% | -24% | -26% | -20% | -24% | -9%  | 0%   | 10%  |
|                    | Other (Direct to Clearing)  | 37%  | 39%  | -1%  | -12% | -4%  | 11%  | -15% | -13% | 0%   | 3%   |

Note: The percentage change is not recorded in the above table for groups with fewer than 10 placed applicants in that cycle or in the 2018 cycle.

**A.18 All Placed: Daily net change (from the EU - excluding UK)**  
Net increase since previous weekday (2019 cycle up to 28 days after A level results day)

- 2015
- 2016
- 2017
- 2018
- 2019**

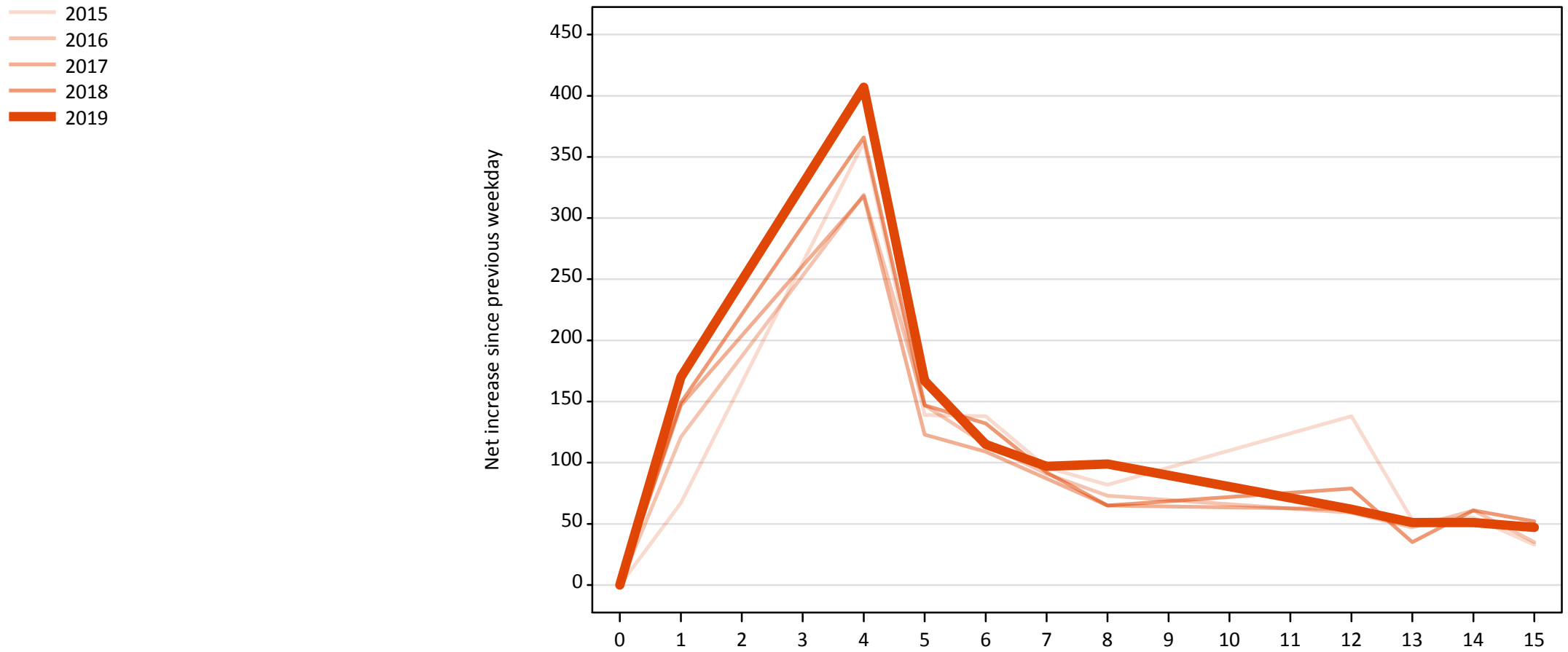


**A.19 All Placed: Daily net change (from the EU - excluding UK)**

Net increase since previous weekday (2019 cycle up to 28 days after A level results day)

| Applicant status, days since A level results day |    | 2015 | 2016 | 2017 | 2018 | 2019 |
|--|----|------|------|------|------|------|
| All Placed                                       | 0  | 0    | 0    | 0    | 0    | 0    |
|  | 1  | 550  | 650  | 720  | 650  | 490  |
|  | 4  | 790  | 760  | 750  | 790  | 750  |
|  | 5  | 450  | 360  | 330  | 340  | 340  |
|  | 6  | 370  | 250  | 250  | 370  | 320  |
|  | 7  | 280  | 270  | 220  | 260  | 270  |
|  | 8  | 270  | 190  | 220  | 210  | 210  |
|  | 12 | 400  | 150  | 160  | 210  | 130  |
|  | 13 | 150  | 150  | 110  | 100  | 180  |
|  | 14 | 150  | 210  | 200  | 170  | 180  |
|  | 15 | 130  | 120  | 130  | 160  | 140  |

**A.20 Placed through Clearing only: Daily net change (from the EU - excluding UK)**  
Net increase since previous weekday (2019 cycle up to 28 days after A level results day)



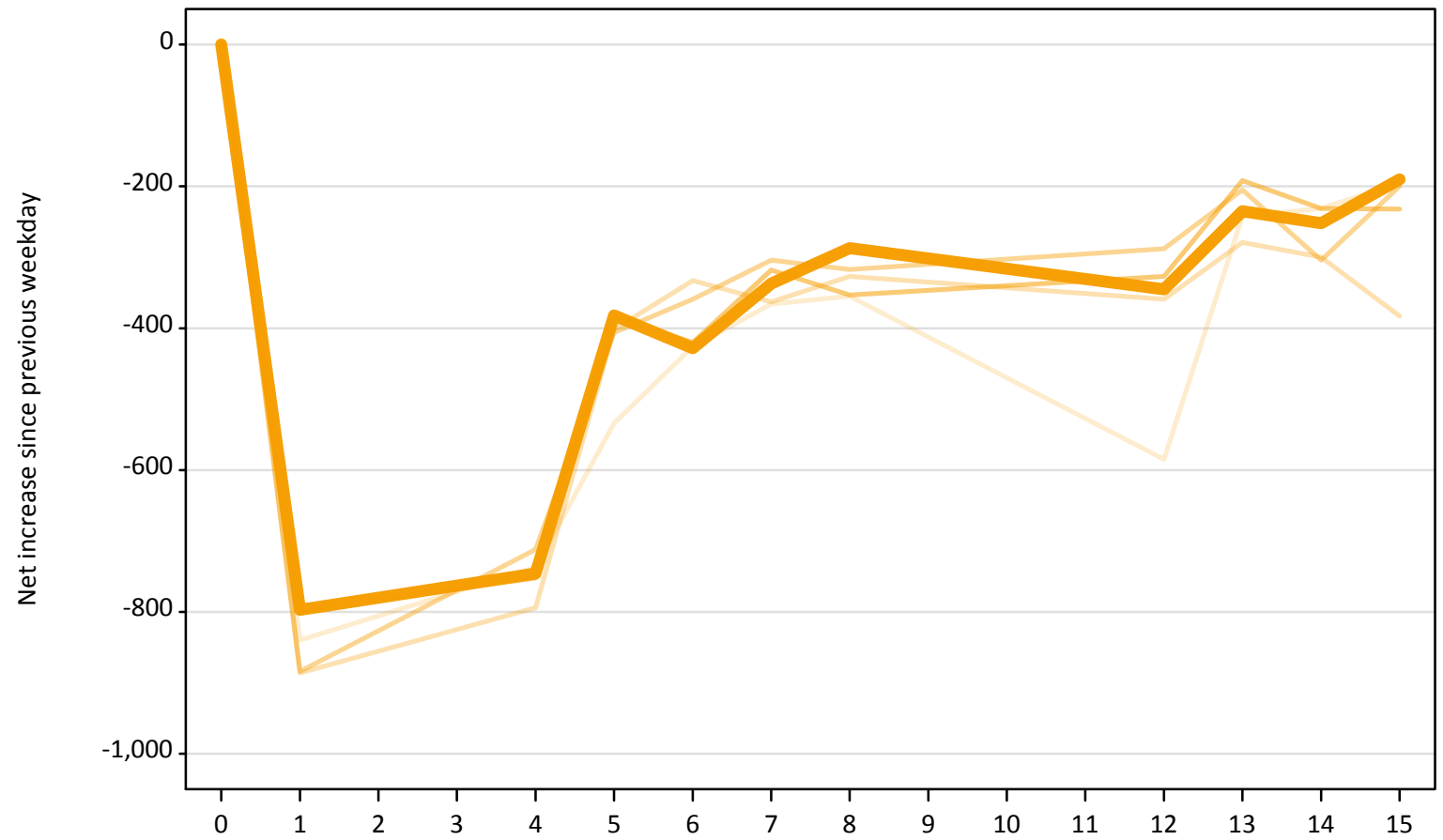
**A.21 Placed through Clearing only: Daily net change (from the EU - excluding UK)**

Net increase since previous weekday (2019 cycle up to 28 days after A level results day)

| Applicant status, days since A level results day |    | 2015 | 2016 | 2017 | 2018 | 2019 |
|--|----|------|------|------|------|------|
| Placed through Clearing only                     | 0  | 0    | 0    | 0    | 0    | 0    |
|  | 1  | 70   | 120  | 150  | 150  | 170  |
|  | 4  | 360  | 320  | 320  | 370  | 410  |
|  | 5  | 140  | 150  | 120  | 150  | 170  |
|  | 6  | 140  | 120  | 110  | 130  | 120  |
|  | 7  | 100  | 90   | 90   | 90   | 100  |
|  | 8  | 80   | 70   | 70   | 70   | 100  |
|  | 12 | 140  | 60   | 60   | 80   | 60   |
|  | 13 | 50   | 50   | 50   | 40   | 50   |
|  | 14 | 60   | 60   | 50   | 60   | 50   |
|  | 15 | 30   | 40   | 50   | 50   | 50   |

**A.22 Holding Offer: Daily net change (from the EU - excluding UK)**  
Net increase since previous weekday (2019 cycle up to 28 days after A level results day)

- 2015
- 2016
- 2017
- 2018
- 2019**





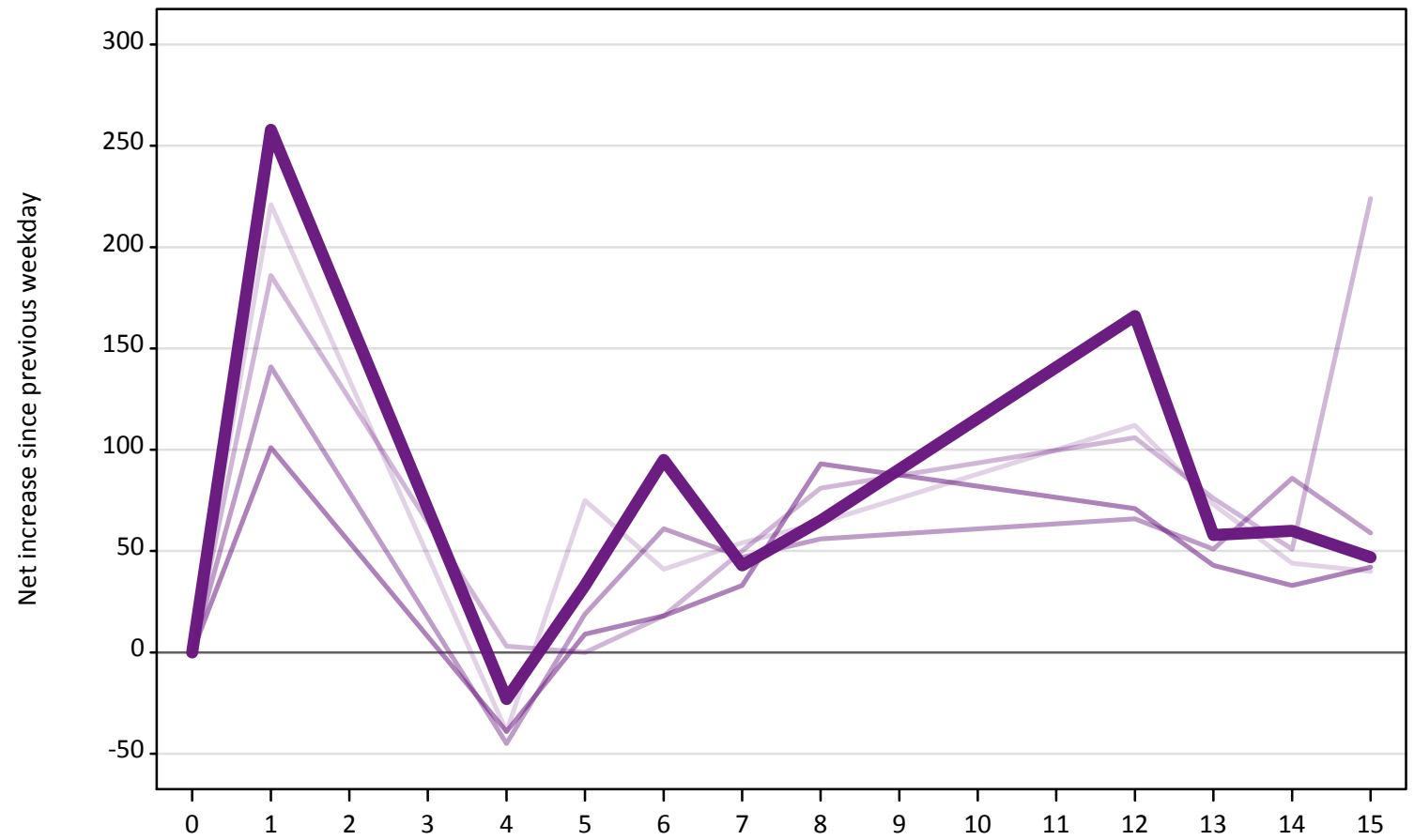
### A.23 Holding Offer: Daily net change (from the EU - excluding UK)

Net increase since previous weekday (2019 cycle up to 28 days after A level results day)

| Applicant status, days since A level results day | 2015 | 2016 | 2017 | 2018 | 2019 |      |
|--|------|------|------|------|------|------|
| Holding Offer                                    | 0    | 0    | 0    | 0    | 0    |      |
|  | 1    | -840 | -890 | -880 | -800 | -800 |
|  | 4    | -740 | -790 | -710 | -750 | -750 |
|  | 5    | -530 | -400 | -410 | -380 | -380 |
|  | 6    | -430 | -330 | -360 | -420 | -430 |
|  | 7    | -370 | -360 | -300 | -320 | -340 |
|  | 8    | -360 | -330 | -320 | -350 | -290 |
|  | 12   | -590 | -360 | -290 | -330 | -350 |
|  | 13   | -240 | -280 | -210 | -190 | -240 |
|  | 14   | -230 | -300 | -300 | -230 | -250 |
|  | 15   | -200 | -380 | -200 | -230 | -190 |

**A.24 Free to be placed in Clearing: Daily net change (from the EU - excluding UK)**  
Net increase since previous weekday (2019 cycle up to 28 days after A level results day)

- 2015
- 2016
- 2017
- 2018
- 2019



**A.25 Free to be placed in Clearing: Daily net change (from the EU - excluding UK)**

Net increase since previous weekday (2019 cycle up to 28 days after A level results day)

| Applicant status, days since A level results day |    | 2015 | 2016 | 2017 | 2018 | 2019 |
|--|----|------|------|------|------|------|
| Free to be placed in Clearing                    | 0  | 0    | 0    | 0    | 0    | 0    |
|  | 1  | 220  | 190  | 140  | 100  | 260  |
|  | 4  | -40  | 0    | -50  | -40  | -20  |
|  | 5  | 80   | 0    | 20   | 10   | 30   |
|  | 6  | 40   | 20   | 60   | 20   | 100  |
|  | 7  | 50   | 50   | 50   | 30   | 40   |
|  | 8  | 60   | 80   | 60   | 90   | 70   |
|  | 12 | 110  | 110  | 70   | 70   | 170  |
|  | 13 | 70   | 80   | 50   | 40   | 60   |
|  | 14 | 40   | 50   | 90   | 30   | 60   |
|  | 15 | 40   | 220  | 60   | 40   | 50   |