

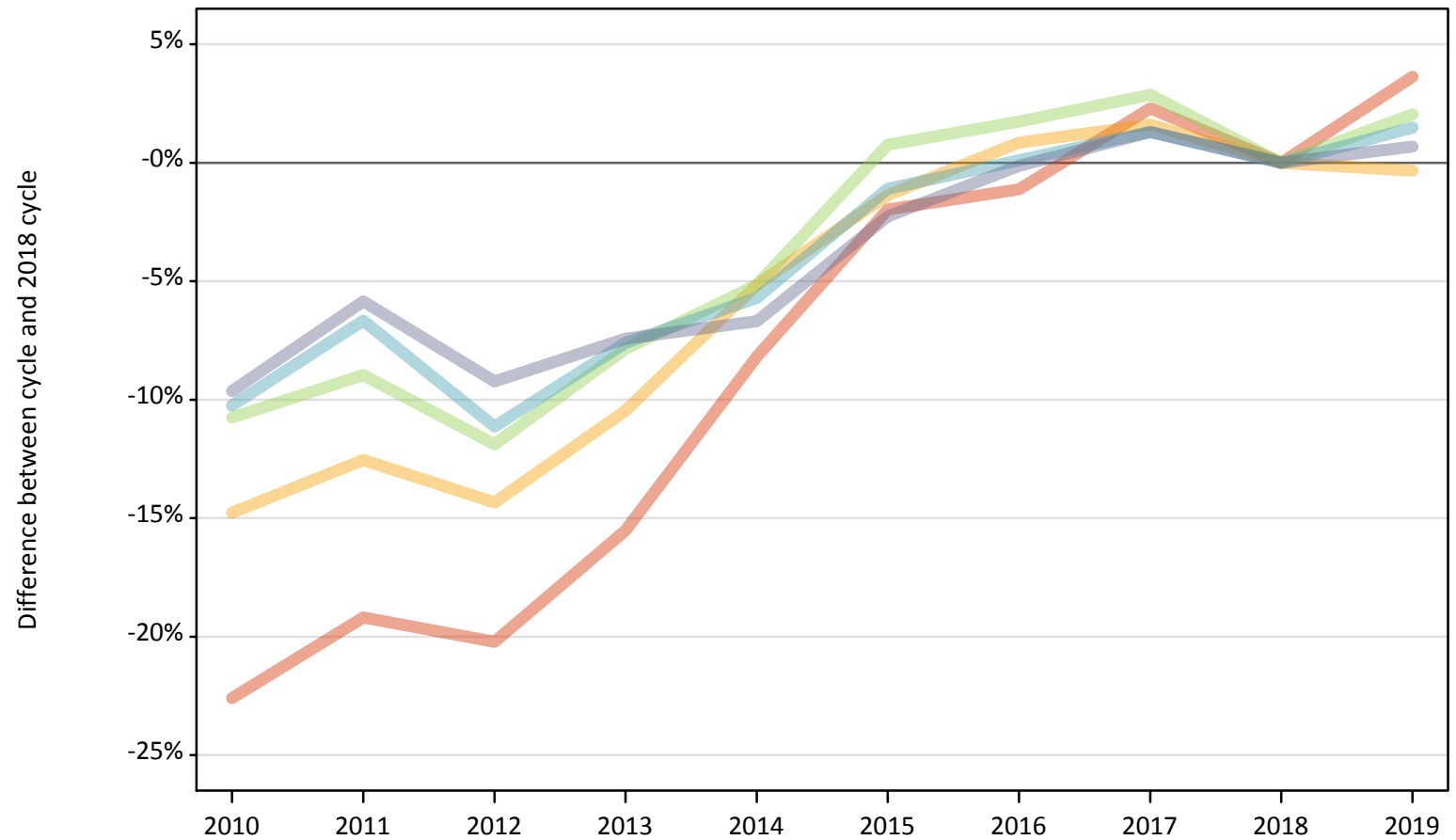
Daily Clearing Analysis: POLAR4

Analysis at 00:05 on Thursday 12 September 2019 (28 days after A level results day)

P.1 Placed 18 year old applicants from England by POLAR4 quintile: 28 days after A level results day

Placed 18 year old applicants: change relative to 2018 cycle totals

- Quintile 1
- Quintile 2
- Quintile 3
- Quintile 4
- Quintile 5



Note: The percentage change is not plotted in the above chart for groups with fewer than 30 placed applicants in any one cycle.

P.2 Placed 18 year old applicants from England by POLAR4 quintile: 28 days after A level results day

Applicant Status	POLAR4	2010	2011	2012	2013	2014	2015	2016	2017	2018	2019
Placed	Quintile 1	17,260	18,020	17,800	18,840	20,480	21,870	22,050	22,820	22,310	23,120
	Quintile 2	26,380	27,070	26,520	27,720	29,360	30,530	31,220	31,460	30,960	30,850
	Quintile 3	33,650	34,320	33,220	34,740	35,760	37,990	38,360	38,780	37,700	38,470
	Quintile 4	41,910	43,580	41,490	43,140	44,030	46,180	46,740	47,310	46,690	47,390
	Quintile 5	59,710	62,220	59,970	61,170	61,660	64,580	65,990	66,940	66,080	66,530

P.3 Placed 18 year old applicants from England by POLAR4 quintile: 28 days after A level results day

Placed 18 year old applicants: change relative to 2018 cycle totals

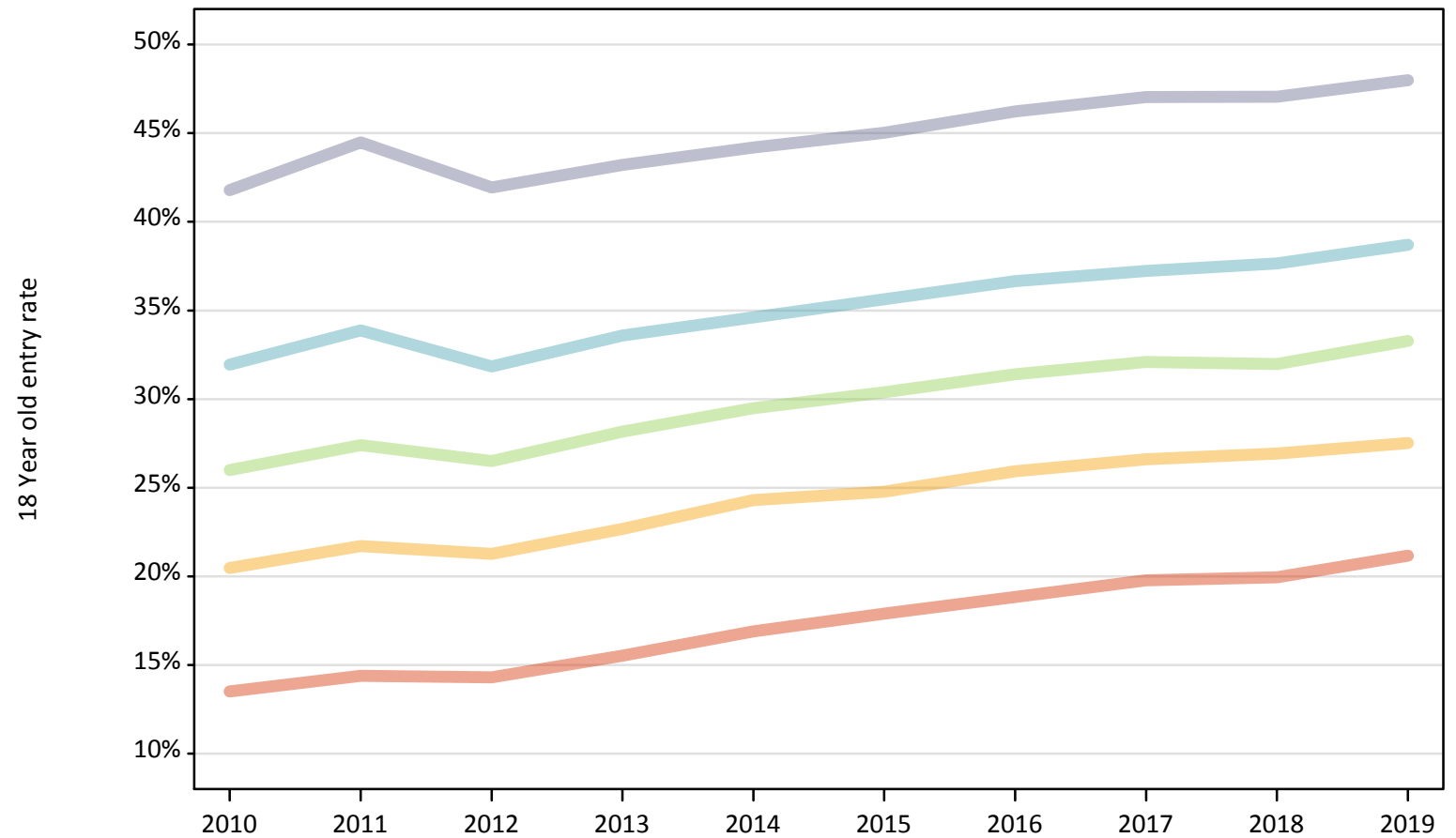
Applicant Status	POLAR4	2010	2011	2012	2013	2014	2015	2016	2017	2018	2019
Placed	Quintile 1	-23%	-19%	-20%	-16%	-8%	-2%	-1%	2%	0%	4%
	Quintile 2	-15%	-13%	-14%	-10%	-5%	-1%	1%	2%	0%	-0%
	Quintile 3	-11%	-9%	-12%	-8%	-5%	1%	2%	3%	0%	2%
	Quintile 4	-10%	-7%	-11%	-8%	-6%	-1%	0%	1%	0%	1%
	Quintile 5	-10%	-6%	-9%	-7%	-7%	-2%	-0%	1%	0%	1%

Note: The percentage change is not recorded in the above table for groups with fewer than 10 placed applicants in that cycle or in the 2018 cycle.

P.4 Placed 18 year old applicants from England by POLAR4 quintile: 28 days after A level results day

Placed 18 year old applicants: entry rate

- Quintile 1
- Quintile 2
- Quintile 3
- Quintile 4
- Quintile 5



P.5 Placed 18 year old applicants from England by POLAR4 quintile: 28 days after A level results day

Placed 18 year old applicants: entry rate

Applicant Status	POLAR4	2010	2011	2012	2013	2014	2015	2016	2017	2018	2019
Placed	Quintile 1	13.5%	14.4%	14.3%	15.5%	16.9%	17.9%	18.8%	19.8%	19.9%	21.2%
	Quintile 2	20.5%	21.7%	21.3%	22.7%	24.3%	24.8%	25.9%	26.6%	26.9%	27.5%
	Quintile 3	26.0%	27.4%	26.5%	28.2%	29.5%	30.4%	31.4%	32.1%	32.0%	33.3%
	Quintile 4	31.9%	33.9%	31.8%	33.6%	34.6%	35.6%	36.6%	37.2%	37.7%	38.7%
	Quintile 5	41.8%	44.5%	41.9%	43.2%	44.2%	45.0%	46.2%	47.0%	47.1%	48.0%

P.6 Placed 18 year old applicants from England by POLAR4 quintile: 28 days after A level results day

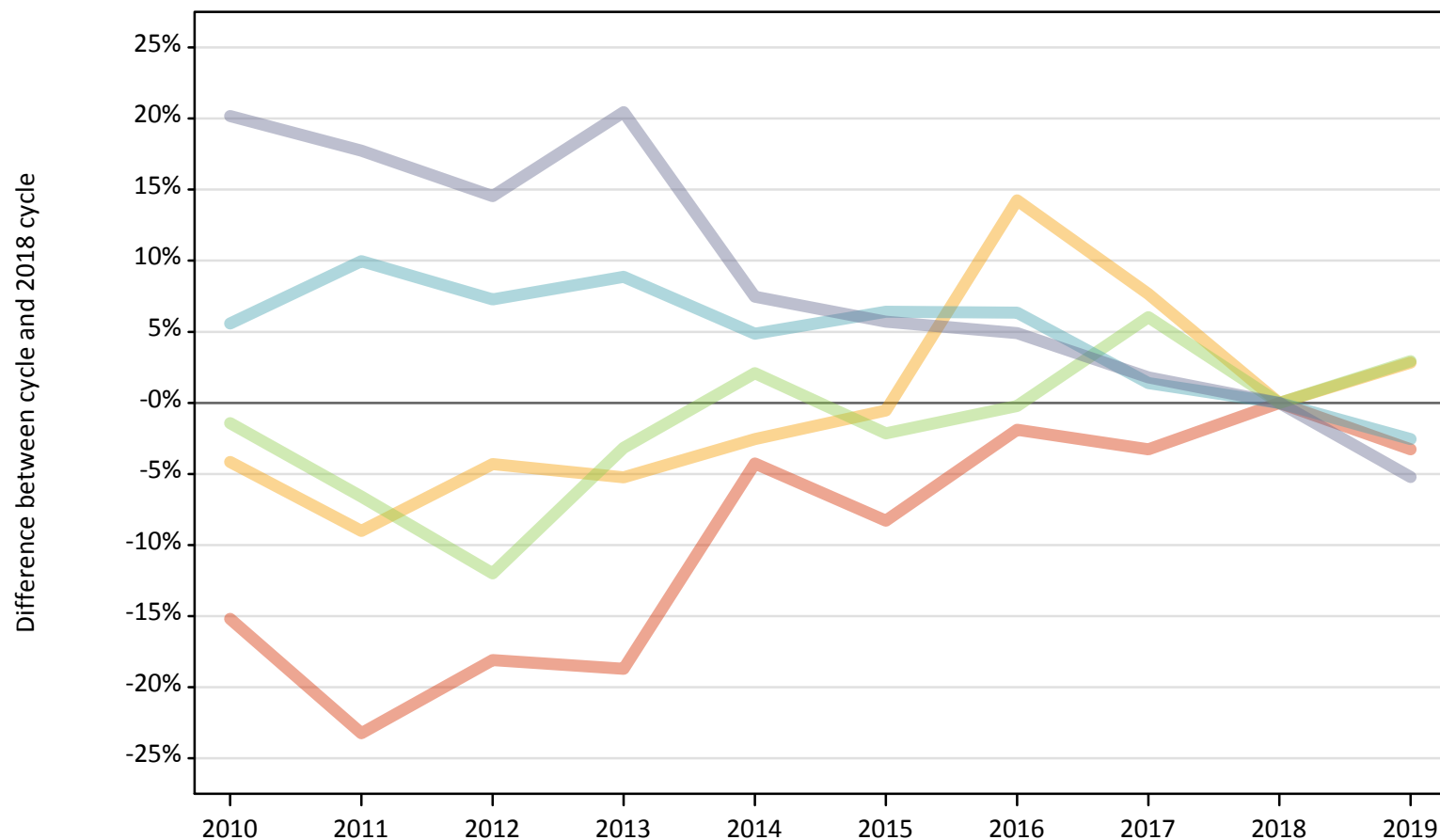
Placed 18 year old applicants: entry rate (indexed to 100 = Quintile 1)

Applicant Status	POLAR4	2010	2011	2012	2013	2014	2015	2016	2017	2018	2019
Placed	Quintile 1	100	100	100	100	100	100	100	100	100	100
	Quintile 2	152	151	149	146	144	138	138	135	135	130
	Quintile 3	193	190	185	182	174	170	167	162	160	157
	Quintile 4	237	235	223	216	205	199	195	188	189	183
	Quintile 5	310	309	293	279	262	252	245	238	236	227

P.7 Placed 18 year old applicants from Northern Ireland by POLAR4 quintile: 28 days after A level results day

Placed 18 year old applicants: change relative to 2018 cycle totals

- Quintile 1
- Quintile 2
- Quintile 3
- Quintile 4
- Quintile 5



Note: The percentage change is not plotted in the above chart for groups with fewer than 30 placed applicants in any one cycle.

P.8 Placed 18 year old applicants from Northern Ireland by POLAR4 quintile: 28 days after A level results day

Applicant Status	POLAR4	2010	2011	2012	2013	2014	2015	2016	2017	2018	2019
Placed	Quintile 1	680	610	650	650	760	730	780	770	800	770
	Quintile 2	710	680	710	710	730	740	850	800	740	770
	Quintile 3	1,370	1,300	1,230	1,350	1,420	1,360	1,390	1,480	1,390	1,430
	Quintile 4	2,190	2,280	2,230	2,260	2,180	2,210	2,210	2,110	2,080	2,020
	Quintile 5	3,830	3,750	3,650	3,830	3,420	3,370	3,340	3,240	3,180	3,020

P.9 Placed 18 year old applicants from Northern Ireland by POLAR4 quintile: 28 days after A level results day

Placed 18 year old applicants: change relative to 2018 cycle totals

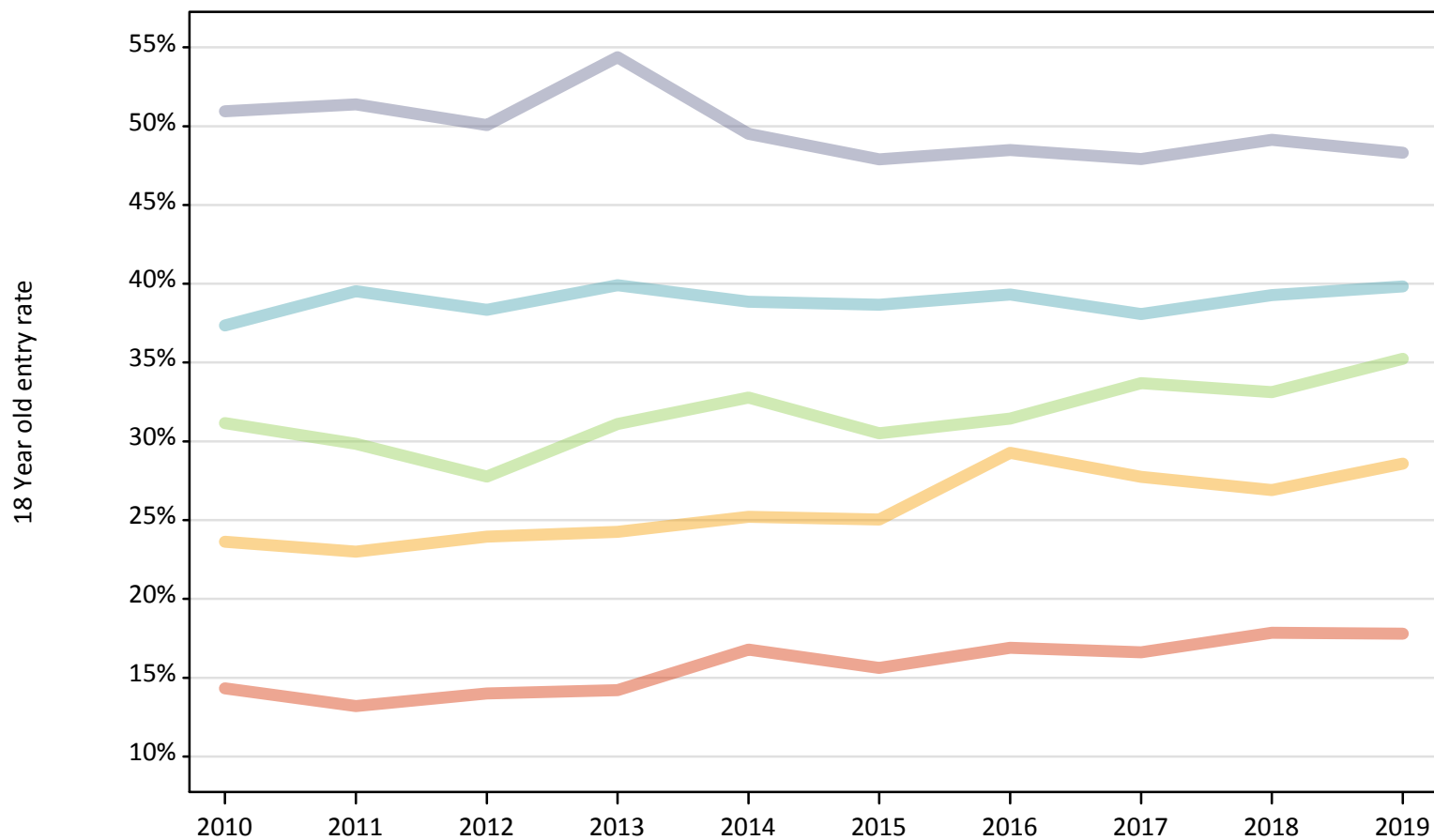
Applicant Status	POLAR4	2010	2011	2012	2013	2014	2015	2016	2017	2018	2019
Placed	Quintile 1	-15%	-23%	-18%	-19%	-4%	-8%	-2%	-3%	0%	-3%
	Quintile 2	-4%	-9%	-4%	-5%	-3%	-1%	14%	8%	0%	3%
	Quintile 3	-1%	-7%	-12%	-3%	2%	-2%	-0%	6%	0%	3%
	Quintile 4	6%	10%	7%	9%	5%	6%	6%	1%	0%	-3%
	Quintile 5	20%	18%	15%	20%	7%	6%	5%	2%	0%	-5%

Note: The percentage change is not recorded in the above table for groups with fewer than 10 placed applicants in that cycle or in the 2018 cycle.

P.10 Placed 18 year old applicants from Northern Ireland by POLAR4 quintile: 28 days after A level results day

Placed 18 year old applicants: entry rate

- Quintile 1
- Quintile 2
- Quintile 3
- Quintile 4
- Quintile 5



P.11 Placed 18 year old applicants from Northern Ireland by POLAR4 quintile: 28 days after A level results day

Placed 18 year old applicants: entry rate

Applicant Status	POLAR4	2010	2011	2012	2013	2014	2015	2016	2017	2018	2019
Placed	Quintile 1	14.3%	13.2%	14.0%	14.2%	16.8%	15.6%	16.9%	16.6%	17.8%	17.8%
	Quintile 2	23.6%	23.0%	24.0%	24.3%	25.2%	25.0%	29.3%	27.8%	26.9%	28.6%
	Quintile 3	31.2%	29.8%	27.8%	31.1%	32.8%	30.5%	31.4%	33.7%	33.1%	35.2%
	Quintile 4	37.4%	39.5%	38.3%	39.9%	38.9%	38.7%	39.3%	38.1%	39.3%	39.8%
	Quintile 5	50.9%	51.4%	50.1%	54.4%	49.5%	47.9%	48.5%	47.9%	49.1%	48.3%

P.12 Placed 18 year old applicants from Northern Ireland by POLAR4 quintile: 28 days after A level results day

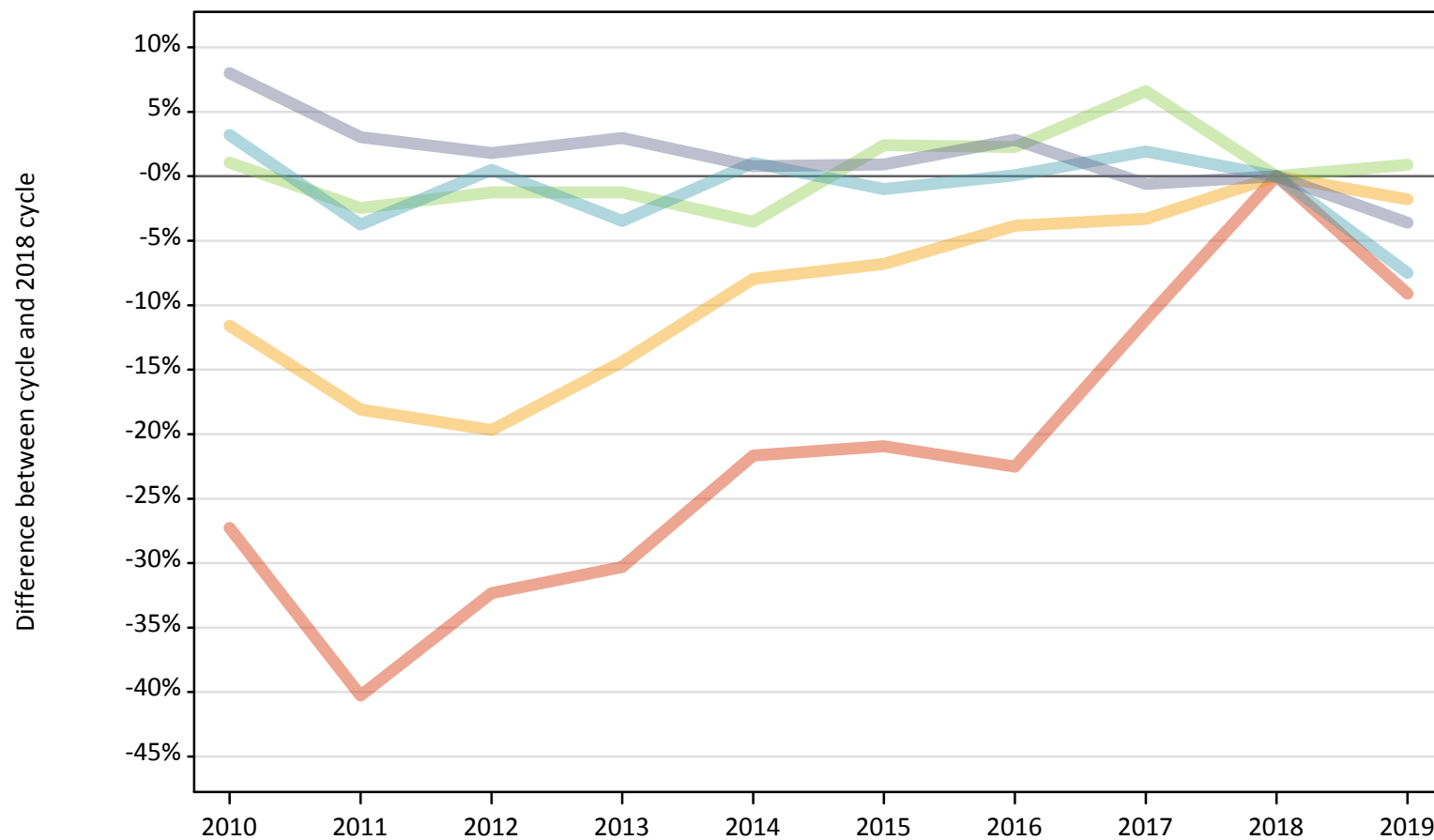
Placed 18 year old applicants: entry rate (indexed to 100 = Quintile 1)

Applicant Status	POLAR4	2010	2011	2012	2013	2014	2015	2016	2017	2018	2019
Placed	Quintile 1	100	100	100	100	100	100	100	100	100	100
	Quintile 2	165	174	171	171	150	160	173	167	151	161
	Quintile 3	217	226	198	219	195	195	186	203	186	198
	Quintile 4	261	299	274	281	232	248	233	229	220	224
	Quintile 5	356	389	357	383	295	307	287	288	275	271

P.13 Placed 18 year old applicants from Scotland by POLAR4 quintile: 28 days after A level results day

Placed 18 year old applicants: change relative to 2018 cycle totals

- Quintile 1
- Quintile 2
- Quintile 3
- Quintile 4
- Quintile 5



Note: The percentage change is not plotted in the above chart for groups with fewer than 30 placed applicants in any one cycle.

P.14 Placed 18 year old applicants from Scotland by POLAR4 quintile: 28 days after A level results day

Applicant Status	POLAR4	2010	2011	2012	2013	2014	2015	2016	2017	2018	2019
Placed	Quintile 1	500	410	470	480	540	550	540	620	690	630
	Quintile 2	1,290	1,200	1,170	1,250	1,340	1,360	1,400	1,410	1,460	1,430
	Quintile 3	2,270	2,190	2,220	2,220	2,160	2,300	2,290	2,390	2,240	2,260
	Quintile 4	3,460	3,220	3,370	3,230	3,380	3,320	3,350	3,410	3,350	3,100
	Quintile 5	7,340	7,000	6,910	6,990	6,850	6,850	6,980	6,750	6,790	6,550

P.15 Placed 18 year old applicants from Scotland by POLAR4 quintile: 28 days after A level results day

Placed 18 year old applicants: change relative to 2018 cycle totals

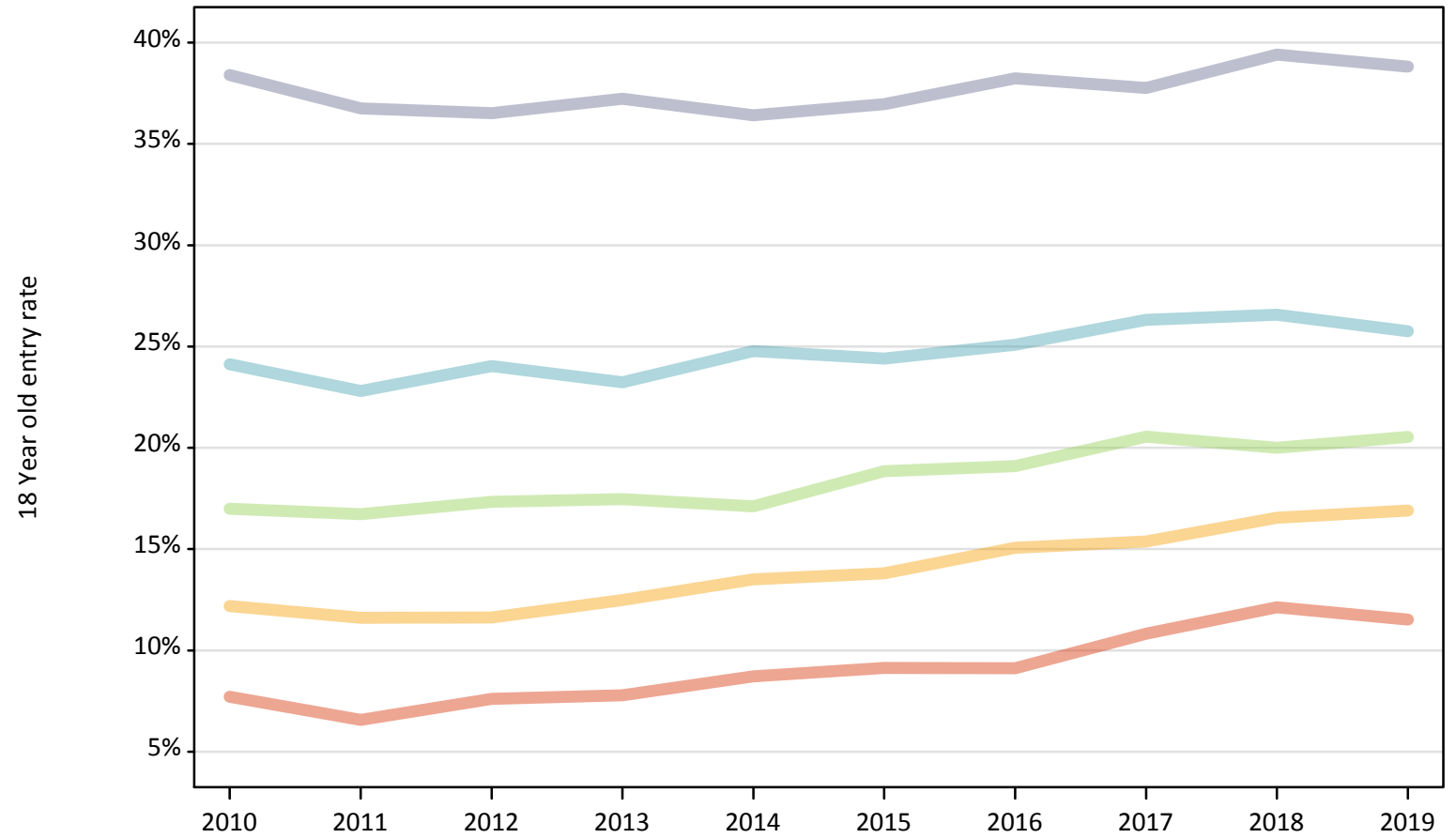
Applicant Status	POLAR4	2010	2011	2012	2013	2014	2015	2016	2017	2018	2019
Placed	Quintile 1	-27%	-40%	-32%	-30%	-22%	-21%	-23%	-11%	0%	-9%
	Quintile 2	-12%	-18%	-20%	-14%	-8%	-7%	-4%	-3%	0%	-2%
	Quintile 3	1%	-2%	-1%	-1%	-4%	2%	2%	7%	0%	1%
	Quintile 4	3%	-4%	1%	-3%	1%	-1%	0%	2%	0%	-7%
	Quintile 5	8%	3%	2%	3%	1%	1%	3%	-1%	0%	-4%

Note: The percentage change is not recorded in the above table for groups with fewer than 10 placed applicants in that cycle or in the 2018 cycle.

P.16 Placed 18 year old applicants from Scotland by POLAR4 quintile: 28 days after A level results day

Placed 18 year old applicants: entry rate

- Quintile 1
- Quintile 2
- Quintile 3
- Quintile 4
- Quintile 5



P.17 Placed 18 year old applicants from Scotland by POLAR4 quintile: 28 days after A level results day

Placed 18 year old applicants: entry rate

Applicant Status	POLAR4	2010	2011	2012	2013	2014	2015	2016	2017	2018	2019
Placed	Quintile 1	7.7%	6.6%	7.6%	7.8%	8.7%	9.1%	9.1%	10.8%	12.1%	11.5%
	Quintile 2	12.2%	11.6%	11.6%	12.5%	13.5%	13.8%	15.1%	15.4%	16.6%	16.9%
	Quintile 3	17.0%	16.7%	17.3%	17.5%	17.1%	18.8%	19.1%	20.6%	20.0%	20.5%
	Quintile 4	24.1%	22.8%	24.0%	23.2%	24.8%	24.4%	25.1%	26.3%	26.6%	25.8%
	Quintile 5	38.4%	36.8%	36.5%	37.2%	36.4%	37.0%	38.2%	37.8%	39.4%	38.8%

P.18 Placed 18 year old applicants from Scotland by POLAR4 quintile: 28 days after A level results day

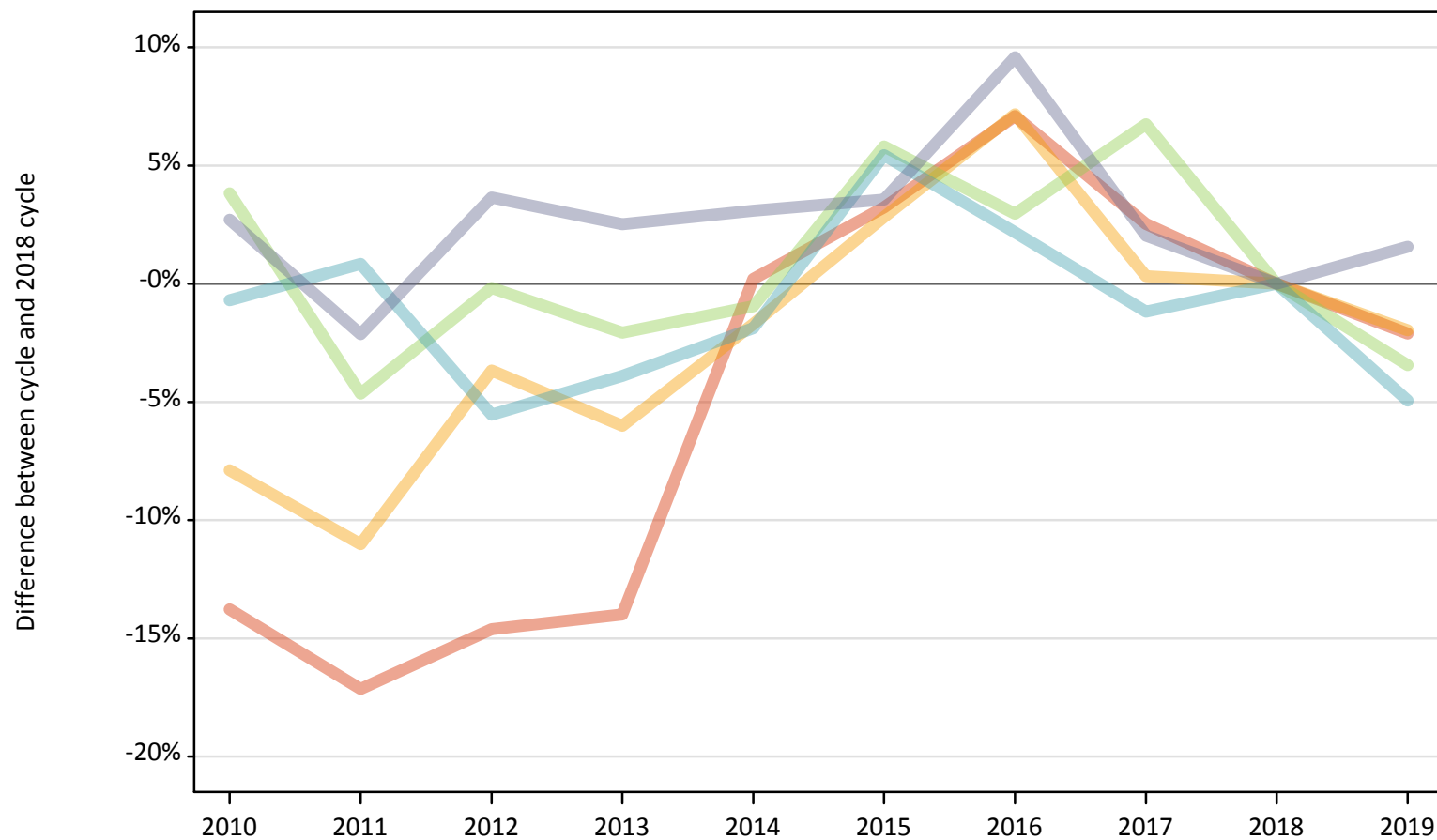
Placed 18 year old applicants: entry rate (indexed to 100 = Quintile 1)

Applicant Status	POLAR4	2010	2011	2012	2013	2014	2015	2016	2017	2018	2019
Placed	Quintile 1	100	100	100	100	100	100	100	100	100	100
	Quintile 2	158	177	153	160	155	151	165	142	136	147
	Quintile 3	220	255	228	224	196	206	210	190	165	178
	Quintile 4	313	347	316	298	284	267	275	243	219	223
	Quintile 5	498	560	480	478	418	405	419	349	325	337

P.19 Placed 18 year old applicants from Wales by POLAR4 quintile: 28 days after A level results day

Placed 18 year old applicants: change relative to 2018 cycle totals

- Quintile 1
- Quintile 2
- Quintile 3
- Quintile 4
- Quintile 5



Note: The percentage change is not plotted in the above chart for groups with fewer than 30 placed applicants in any one cycle.

P.20 Placed 18 year old applicants from Wales by POLAR4 quintile: 28 days after A level results day

Applicant Status	POLAR4	2010	2011	2012	2013	2014	2015	2016	2017	2018	2019
Placed	Quintile 1	1,230	1,180	1,220	1,220	1,430	1,470	1,520	1,460	1,420	1,390
	Quintile 2	2,060	1,990	2,150	2,100	2,190	2,300	2,390	2,240	2,230	2,190
	Quintile 3	2,410	2,220	2,320	2,280	2,300	2,460	2,390	2,480	2,330	2,250
	Quintile 4	2,010	2,040	1,910	1,950	1,990	2,130	2,070	2,000	2,020	1,920
	Quintile 5	2,170	2,060	2,190	2,160	2,170	2,180	2,310	2,150	2,110	2,140

P.21 Placed 18 year old applicants from Wales by POLAR4 quintile: 28 days after A level results day

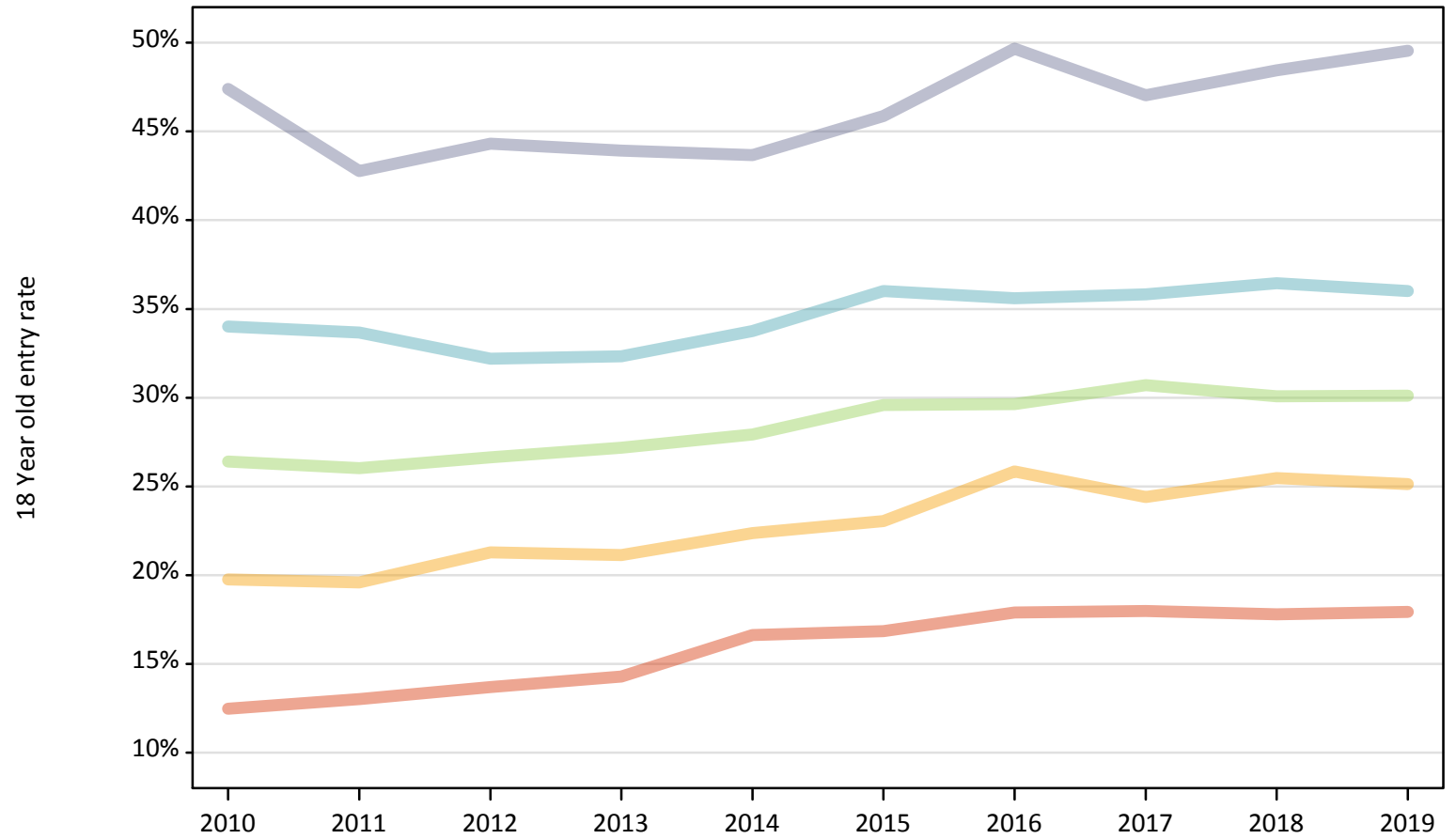
Placed 18 year old applicants: change relative to 2018 cycle totals

Applicant Status	POLAR4	2010	2011	2012	2013	2014	2015	2016	2017	2018	2019
Placed	Quintile 1	-14%	-17%	-15%	-14%	0%	3%	7%	3%	0%	-2%
	Quintile 2	-8%	-11%	-4%	-6%	-2%	3%	7%	0%	0%	-2%
	Quintile 3	4%	-5%	-0%	-2%	-1%	6%	3%	7%	0%	-3%
	Quintile 4	-1%	1%	-6%	-4%	-2%	5%	2%	-1%	0%	-5%
	Quintile 5	3%	-2%	4%	3%	3%	4%	10%	2%	0%	2%

Note: The percentage change is not recorded in the above table for groups with fewer than 10 placed applicants in that cycle or in the 2018 cycle.

P.22 Placed 18 year old applicants from Wales by POLAR4 quintile: 28 days after A level results day
Placed 18 year old applicants: entry rate

- Quintile 1
- Quintile 2
- Quintile 3
- Quintile 4
- Quintile 5



P.23 Placed 18 year old applicants from Wales by POLAR4 quintile: 28 days after A level results day

Placed 18 year old applicants: entry rate

Applicant Status	POLAR4	2010	2011	2012	2013	2014	2015	2016	2017	2018	2019
Placed	Quintile 1	12.5%	13.0%	13.7%	14.3%	16.6%	16.8%	17.9%	18.0%	17.8%	17.9%
	Quintile 2	19.8%	19.6%	21.3%	21.1%	22.4%	23.0%	25.8%	24.4%	25.5%	25.1%
	Quintile 3	26.4%	26.0%	26.6%	27.2%	27.9%	29.6%	29.6%	30.7%	30.1%	30.1%
	Quintile 4	34.0%	33.7%	32.2%	32.3%	33.8%	36.0%	35.6%	35.8%	36.4%	36.0%
	Quintile 5	47.4%	42.8%	44.3%	43.9%	43.7%	45.9%	49.7%	47.0%	48.4%	49.5%

P.24 Placed 18 year old applicants from Wales by POLAR4 quintile: 28 days after A level results day

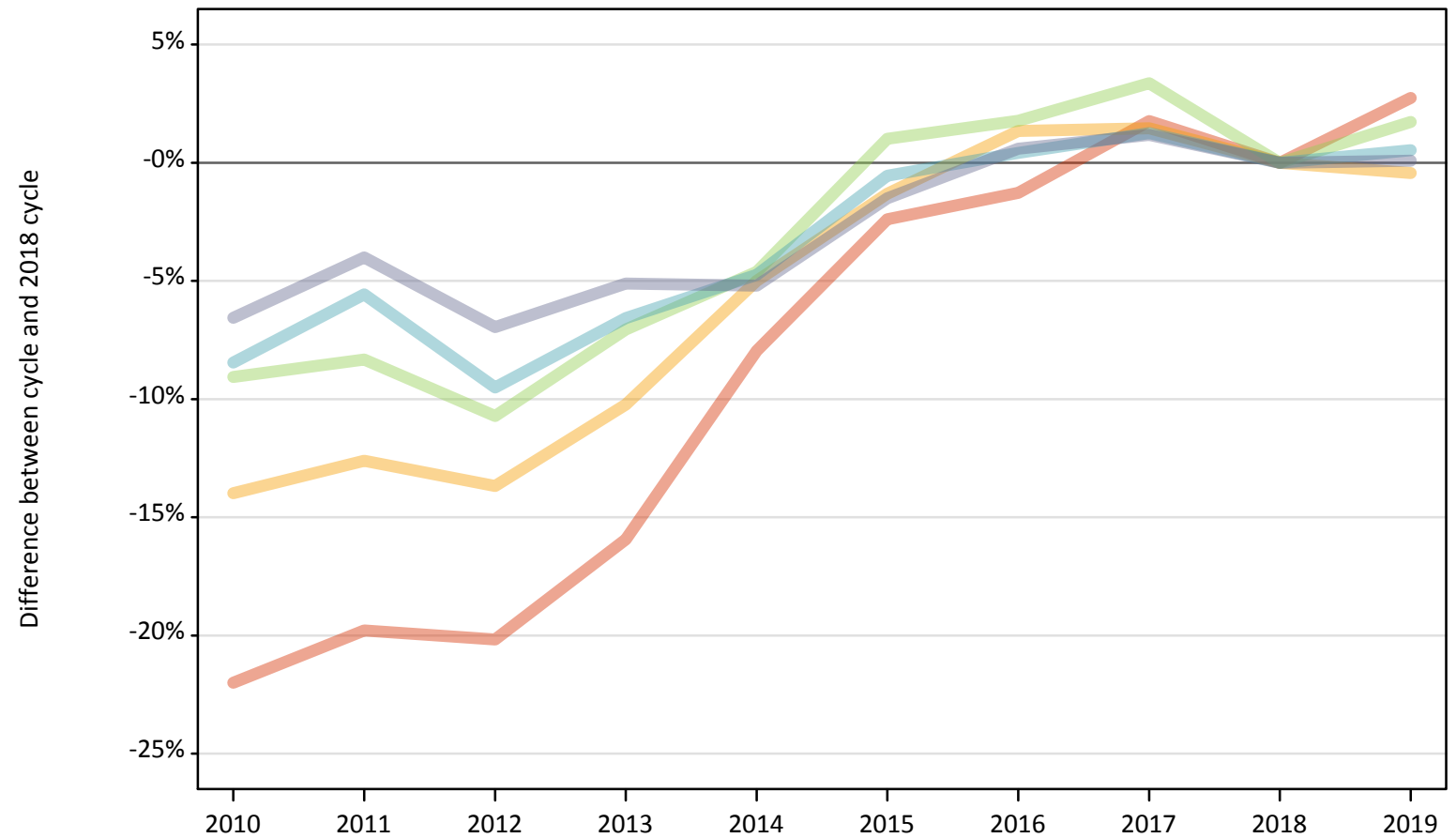
Placed 18 year old applicants: entry rate (indexed to 100 = Quintile 1)

Applicant Status	POLAR4	2010	2011	2012	2013	2014	2015	2016	2017	2018	2019
Placed	Quintile 1	100	100	100	100	100	100	100	100	100	100
	Quintile 2	158	150	156	148	135	137	144	136	143	140
	Quintile 3	212	200	195	190	168	176	166	171	169	168
	Quintile 4	272	259	235	226	203	214	199	199	205	201
	Quintile 5	380	329	324	307	263	272	278	262	272	276

P.25 Placed 18 year old applicants from the UK by POLAR4 quintile: 28 days after A level results day

Placed 18 year old applicants: change relative to 2018 cycle totals

- Quintile 1
- Quintile 2
- Quintile 3
- Quintile 4
- Quintile 5



Note: The percentage change is not plotted in the above chart for groups with fewer than 30 placed applicants in any one cycle.

P.26 Placed 18 year old applicants from the UK by POLAR4 quintile: 28 days after A level results day

Applicant Status	POLAR4	2010	2011	2012	2013	2014	2015	2016	2017	2018	2019
Placed	Quintile 1	19,670	20,230	20,130	21,200	23,210	24,610	24,900	25,660	25,220	25,910
	Quintile 2	30,440	30,930	30,550	31,770	33,630	34,930	35,870	35,910	35,390	35,240
	Quintile 3	39,700	40,030	38,980	40,580	41,650	44,110	44,440	45,130	43,660	44,410
	Quintile 4	49,570	51,130	49,000	50,580	51,580	53,840	54,370	54,820	54,140	54,430
	Quintile 5	73,030	75,030	72,720	74,160	74,100	76,980	78,620	79,080	78,160	78,230

P.27 Placed 18 year old applicants from the UK by POLAR4 quintile: 28 days after A level results day

Placed 18 year old applicants: change relative to 2018 cycle totals

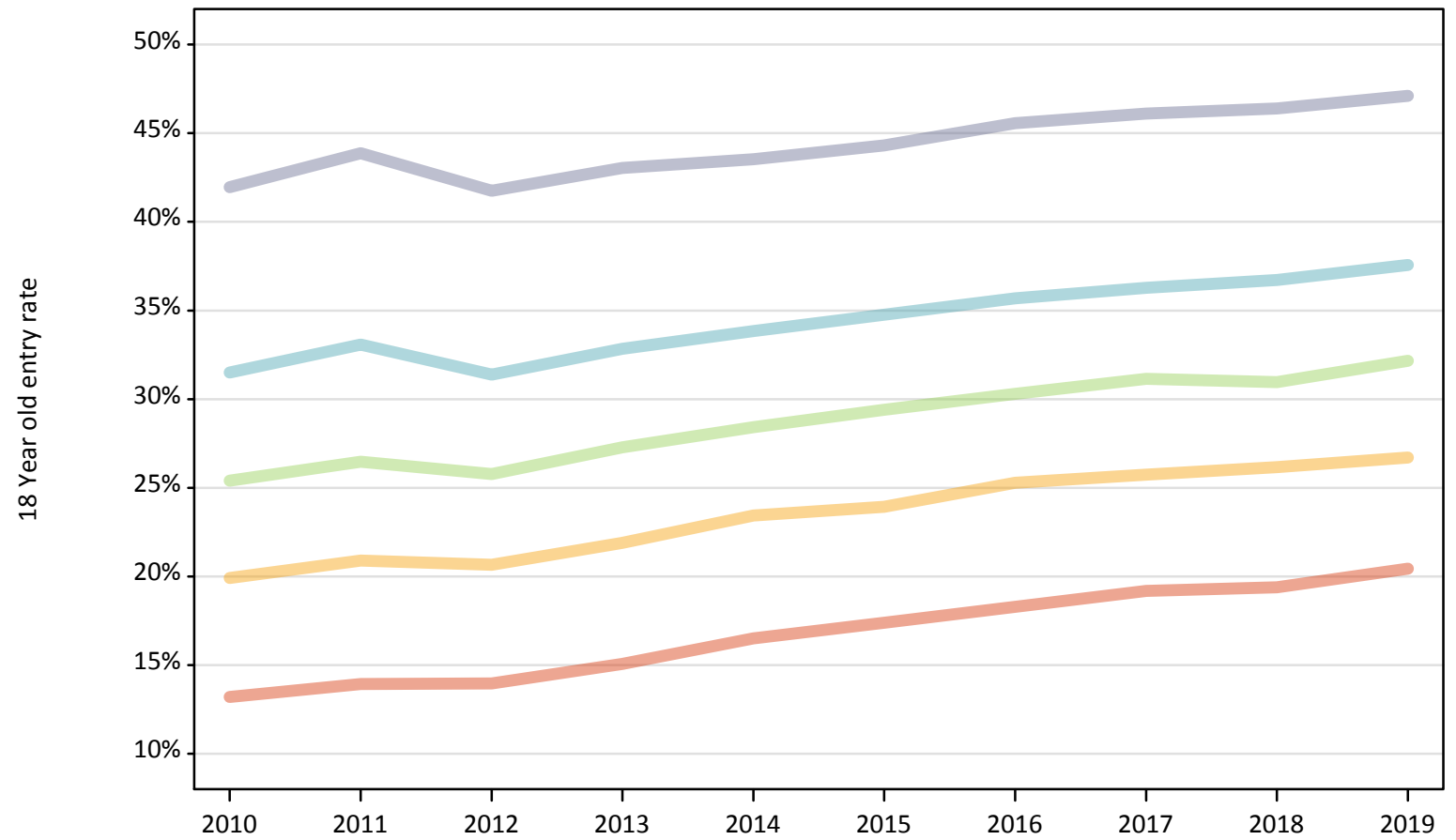
Applicant Status	POLAR4	2010	2011	2012	2013	2014	2015	2016	2017	2018	2019
Placed	Quintile 1	-22%	-20%	-20%	-16%	-8%	-2%	-1%	2%	0%	3%
	Quintile 2	-14%	-13%	-14%	-10%	-5%	-1%	1%	1%	0%	-0%
	Quintile 3	-9%	-8%	-11%	-7%	-5%	1%	2%	3%	0%	2%
	Quintile 4	-8%	-6%	-10%	-7%	-5%	-1%	0%	1%	0%	1%
	Quintile 5	-7%	-4%	-7%	-5%	-5%	-2%	1%	1%	0%	0%

Note: The percentage change is not recorded in the above table for groups with fewer than 10 placed applicants in that cycle or in the 2018 cycle.

P.28 Placed 18 year old applicants from the UK by POLAR4 quintile: 28 days after A level results day

Placed 18 year old applicants: entry rate

- Quintile 1
- Quintile 2
- Quintile 3
- Quintile 4
- Quintile 5



P.29 Placed 18 year old applicants from the UK by POLAR4 quintile: 28 days after A level results day

Placed 18 year old applicants: entry rate

Applicant Status	POLAR4	2010	2011	2012	2013	2014	2015	2016	2017	2018	2019
Placed	Quintile 1	13.2%	13.9%	14.0%	15.1%	16.5%	17.4%	18.3%	19.2%	19.4%	20.4%
	Quintile 2	19.9%	20.9%	20.7%	21.9%	23.4%	23.9%	25.3%	25.7%	26.2%	26.7%
	Quintile 3	25.4%	26.5%	25.8%	27.3%	28.4%	29.4%	30.3%	31.1%	31.0%	32.2%
	Quintile 4	31.5%	33.1%	31.4%	32.8%	33.8%	34.8%	35.7%	36.3%	36.7%	37.6%
	Quintile 5	42.0%	43.9%	41.8%	43.0%	43.5%	44.3%	45.6%	46.1%	46.4%	47.1%

P.30 Placed 18 year old applicants from the UK by POLAR4 quintile: 28 days after A level results day

Placed 18 year old applicants: entry rate (indexed to 100 = Quintile 1)

Applicant Status	POLAR4	2010	2011	2012	2013	2014	2015	2016	2017	2018	2019
Placed	Quintile 1	100	100	100	100	100	100	100	100	100	100
	Quintile 2	151	150	148	145	142	138	138	134	135	131
	Quintile 3	192	190	185	181	172	169	166	162	160	157
	Quintile 4	239	237	225	218	205	200	195	189	189	184
	Quintile 5	318	315	299	286	264	255	249	240	239	231