

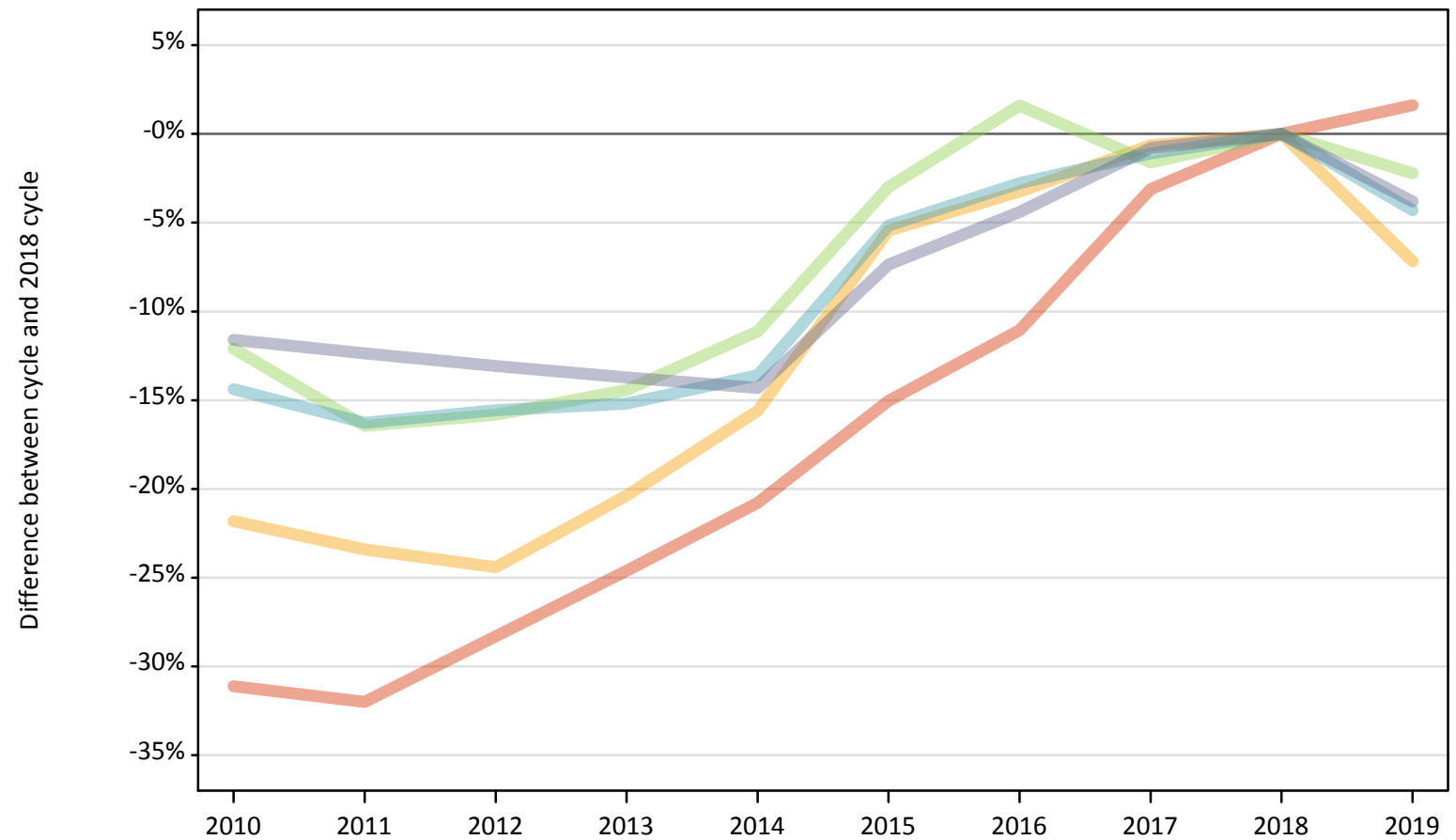
Daily Clearing Analysis: SIMD2012 2016

Analysis at 00:05 on Thursday 12 September 2019 (28 days after A level results day)

J.1 Placed applicants from Scotland by SIMD2012/2016 quintile: 28 days after A level results day

Placed applicants: change relative to 2018 cycle totals

- Quintile 1
- Quintile 2
- Quintile 3
- Quintile 4
- Quintile 5



Note: The percentage change is not plotted in the above chart for groups with fewer than 30 placed applicants in any one cycle.

J.2 Placed applicants from Scotland by SIMD2012/2016 quintile: 28 days after A level results day

Applicant Status	SIMD2012/2016	2010	2011	2012	2013	2014	2015	2016	2017	2018	2019
Placed	Quintile 1	3,610	3,560	3,760	3,950	4,150	4,450	4,660	5,080	5,240	5,330
	Quintile 2	4,310	4,230	4,170	4,390	4,660	5,220	5,340	5,480	5,520	5,120
	Quintile 3	5,620	5,340	5,380	5,470	5,680	6,200	6,500	6,290	6,390	6,250
	Quintile 4	6,720	6,570	6,630	6,660	6,780	7,440	7,630	7,760	7,850	7,510
	Quintile 5	8,810	8,730	8,660	8,600	8,540	9,230	9,520	9,880	9,960	9,580

J.3 Placed applicants from Scotland by SIMD2012/2016 quintile: 28 days after A level results day

Placed applicants: change relative to 2018 cycle totals

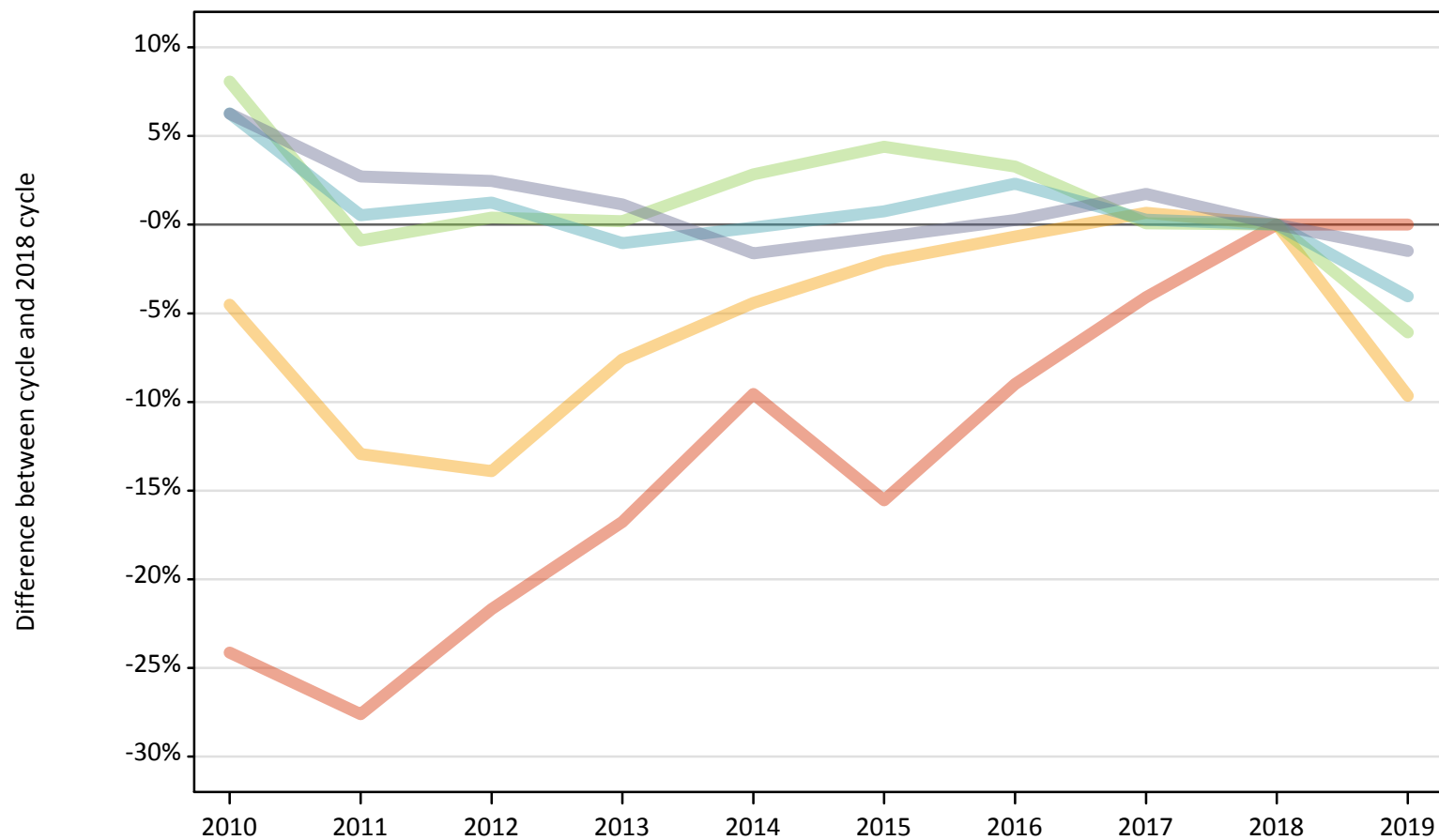
Applicant Status	SIMD2012/2016	2010	2011	2012	2013	2014	2015	2016	2017	2018	2019
Placed	Quintile 1	-31%	-32%	-28%	-25%	-21%	-15%	-11%	-3%	0%	2%
	Quintile 2	-22%	-23%	-24%	-20%	-16%	-5%	-3%	-1%	0%	-7%
	Quintile 3	-12%	-16%	-16%	-14%	-11%	-3%	2%	-2%	0%	-2%
	Quintile 4	-14%	-16%	-16%	-15%	-14%	-5%	-3%	-1%	0%	-4%
	Quintile 5	-12%	-12%	-13%	-14%	-14%	-7%	-4%	-1%	0%	-4%

Note: The percentage change is not recorded in the above table for groups with fewer than 10 placed applicants in that cycle or in the 2018 cycle.

J.4 Placed 18 year old applicants from Scotland by SIMD2012/2016 quintile: 28 days after A level results day

Placed 18 year old applicants: change relative to 2018 cycle totals

- Quintile 1
- Quintile 2
- Quintile 3
- Quintile 4
- Quintile 5



Note: The percentage change is not plotted in the above chart for groups with fewer than 30 placed applicants in any one cycle.

J.5 Placed 18 year old applicants from Scotland by SIMD2012/2016 quintile: 28 days after A level results day

Applicant Status	SIMD2012/2016	2010	2011	2012	2013	2014	2015	2016	2017	2018	2019
Placed	Quintile 1	1,110	1,060	1,150	1,220	1,330	1,240	1,340	1,410	1,470	1,470
	Quintile 2	1,860	1,700	1,680	1,800	1,860	1,910	1,940	1,960	1,950	1,760
	Quintile 3	2,770	2,540	2,580	2,570	2,640	2,680	2,650	2,570	2,570	2,410
	Quintile 4	3,780	3,570	3,600	3,520	3,550	3,580	3,640	3,570	3,560	3,410
	Quintile 5	5,320	5,140	5,130	5,060	4,920	4,970	5,020	5,090	5,000	4,930

J.6 Placed 18 year old applicants from Scotland by SIMD2012/2016 quintile: 28 days after A level results day

Placed 18 year old applicants: change relative to 2018 cycle totals

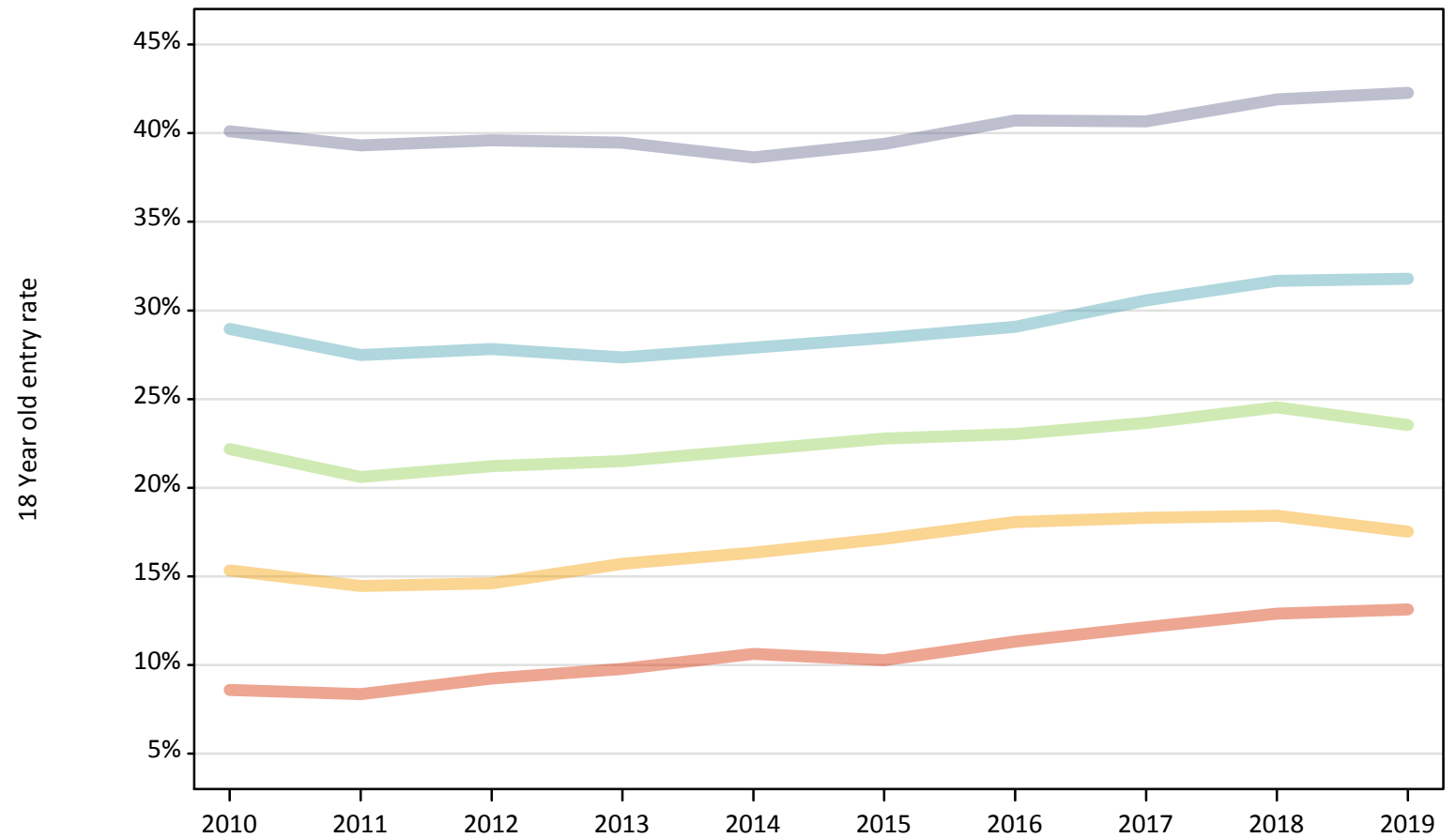
Applicant Status	SIMD2012/2016	2010	2011	2012	2013	2014	2015	2016	2017	2018	2019
Placed	Quintile 1	-24%	-28%	-22%	-17%	-10%	-16%	-9%	-4%	0%	0%
	Quintile 2	-5%	-13%	-14%	-8%	-4%	-2%	-1%	1%	0%	-10%
	Quintile 3	8%	-1%	0%	0%	3%	4%	3%	0%	0%	-6%
	Quintile 4	6%	1%	1%	-1%	-0%	1%	2%	0%	0%	-4%
	Quintile 5	6%	3%	2%	1%	-2%	-1%	0%	2%	0%	-1%

Note: The percentage change is not recorded in the above table for groups with fewer than 10 placed applicants in that cycle or in the 2018 cycle.

J.7 Placed 18 year old applicants from Scotland by SIMD2012/2016 quintile: 28 days after A level results day

Placed 18 year old applicants: entry rate

- Quintile 1
- Quintile 2
- Quintile 3
- Quintile 4
- Quintile 5



J.8 Placed 18 year old applicants from Scotland by SIMD2012/2016 quintile: 28 days after A level results day

Placed 18 year old applicants: entry rate

Applicant Status	SIMD2012/2016	2010	2011	2012	2013	2014	2015	2016	2017	2018	2019
Placed	Quintile 1	8.6%	8.4%	9.2%	9.8%	10.6%	10.3%	11.3%	12.1%	12.9%	13.1%
	Quintile 2	15.3%	14.5%	14.6%	15.7%	16.3%	17.1%	18.1%	18.3%	18.4%	17.5%
	Quintile 3	22.2%	20.6%	21.2%	21.5%	22.1%	22.8%	23.0%	23.7%	24.5%	23.5%
	Quintile 4	29.0%	27.5%	27.8%	27.4%	27.9%	28.4%	29.1%	30.6%	31.7%	31.8%
	Quintile 5	40.1%	39.3%	39.6%	39.5%	38.6%	39.4%	40.7%	40.7%	41.9%	42.3%

J.9 Placed 18 year old applicants from Scotland by SIMD2012/2016 quintile: 28 days after A level results day

Placed 18 year old applicants: entry rate (indexed to 100 = Quintile 1)

Applicant Status	SIMD2012/2016	2010	2011	2012	2013	2014	2015	2016	2017	2018	2019
Placed	Quintile 1	100	100	100	100	100	100	100	100	100	100
	Quintile 2	178	173	158	161	154	167	159	151	143	133
	Quintile 3	258	247	230	220	208	222	203	195	190	179
	Quintile 4	337	329	302	280	263	277	257	252	246	242
	Quintile 5	467	471	429	404	364	384	359	335	325	322