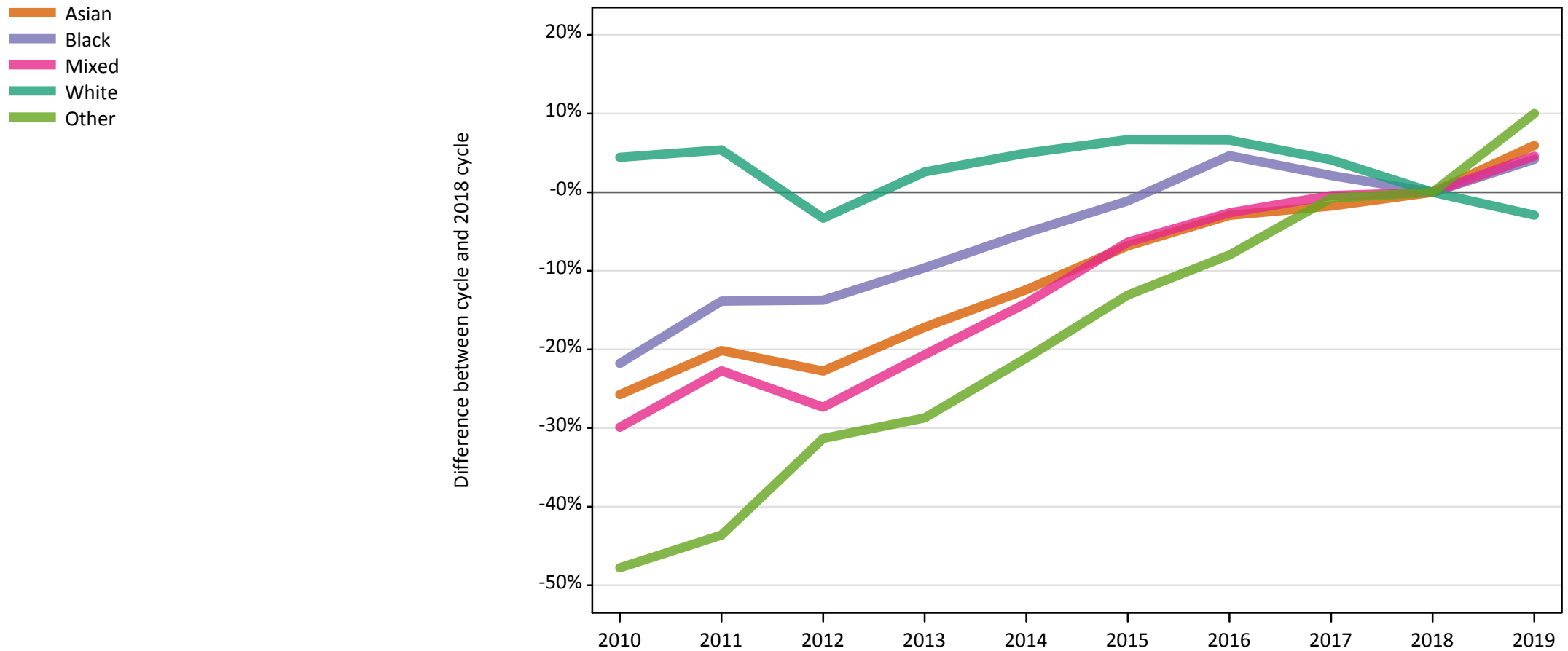


Daily Clearing Analysis: Ethnicity

Analysis at 00:05 on Thursday 12 September 2019 (28 days after A level results day)

E.1 Placed applicants from UK by ethnic group: 28 days after A level results day

Placed applicants: change relative to 2018 cycle totals



Note: The percentage change is not plotted in the above chart for groups with fewer than 30 placed applicants in any one cycle.

E.2 Placed applicants from UK by ethnic group: 28 days after A level results day

Applicant Status	Ethnic group	2010	2011	2012	2013	2014	2015	2016	2017	2018	2019
Placed	Asian	39,340	42,300	40,910	43,870	46,400	49,350	51,400	52,030	52,970	56,120
	Black	25,330	27,900	27,930	29,270	30,710	32,030	33,890	33,080	32,380	33,730
	Mixed	13,740	15,140	14,240	15,540	16,820	18,350	19,080	19,510	19,590	20,490
	White	323,740	326,730	299,810	317,940	325,420	330,770	330,550	322,790	310,010	301,000
	Other	4,100	4,430	5,390	5,600	6,200	6,820	7,220	7,790	7,850	8,640

E.3 Placed applicants from UK by ethnic group: 28 days after A level results day

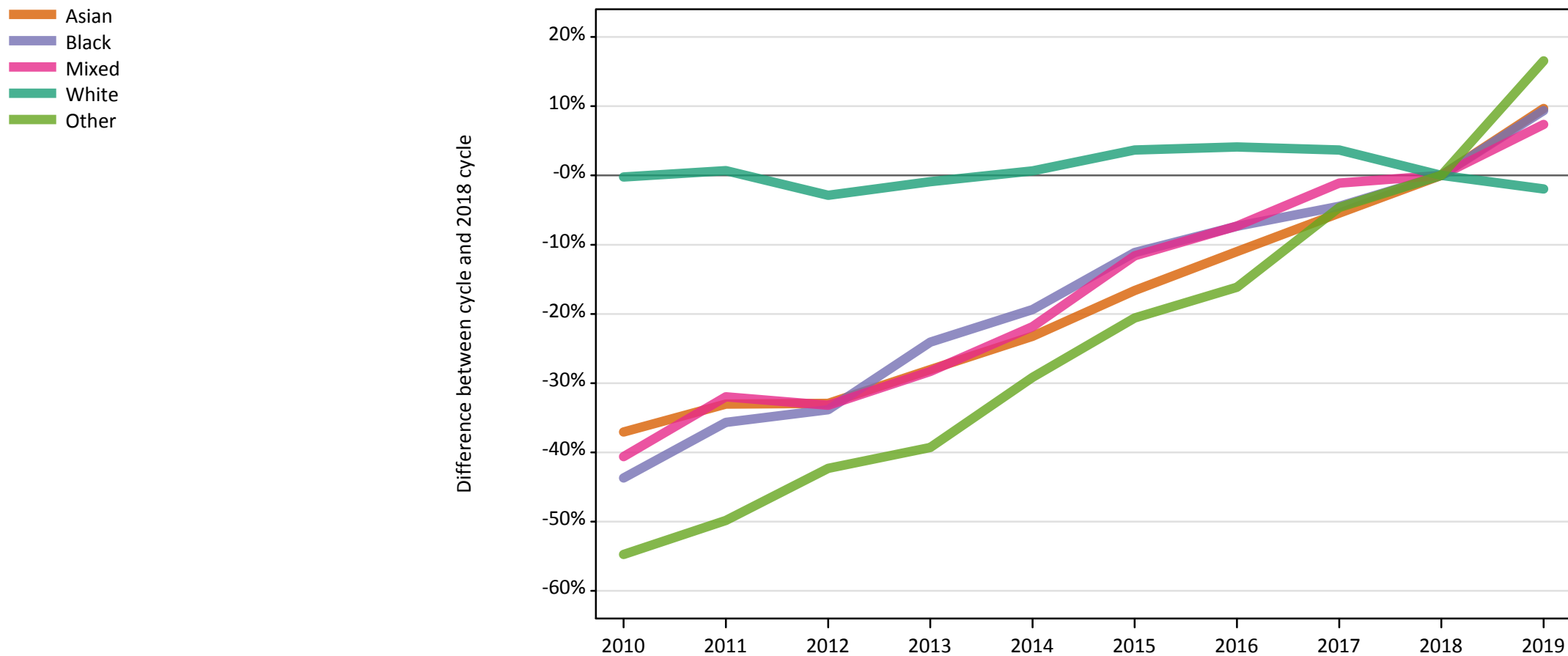
Placed applicants: change relative to 2018 cycle totals

Applicant Status	Ethnic group	2010	2011	2012	2013	2014	2015	2016	2017	2018	2019
Placed	Asian	-26%	-20%	-23%	-17%	-12%	-7%	-3%	-2%	0%	6%
	Black	-22%	-14%	-14%	-10%	-5%	-1%	5%	2%	0%	4%
	Mixed	-30%	-23%	-27%	-21%	-14%	-6%	-3%	-0%	0%	5%
	White	4%	5%	-3%	3%	5%	7%	7%	4%	0%	-3%
	Other	-48%	-44%	-31%	-29%	-21%	-13%	-8%	-1%	0%	10%

Note: The percentage change is not recorded in the above table for groups with fewer than 10 placed applicants in that cycle or in the 2018 cycle.

E.4 Placed 18 year old applicants from UK by ethnic group: 28 days after A level results day

Placed 18 year old applicants: change relative to 2018 cycle totals



Note: The percentage change is not plotted in the above chart for groups with fewer than 30 placed applicants in any one cycle.

E.5 Placed 18 year old applicants from UK by ethnic group: 28 days after A level results day

Applicant Status	Ethnic group	2010	2011	2012	2013	2014	2015	2016	2017	2018	2019
Placed	Asian	19,500	20,760	20,790	22,310	23,790	25,840	27,580	29,300	30,990	33,990
	Black	7,390	8,440	8,690	9,970	10,580	11,660	12,160	12,540	13,130	14,360
	Mixed	6,360	7,280	7,150	7,670	8,370	9,460	9,920	10,580	10,700	11,490
	White	176,690	178,250	171,950	175,450	178,240	183,580	184,340	183,580	177,050	173,590
	Other	1,730	1,910	2,200	2,310	2,700	3,030	3,200	3,630	3,810	4,440

E.6 Placed 18 year old applicants from UK by ethnic group: 28 days after A level results day

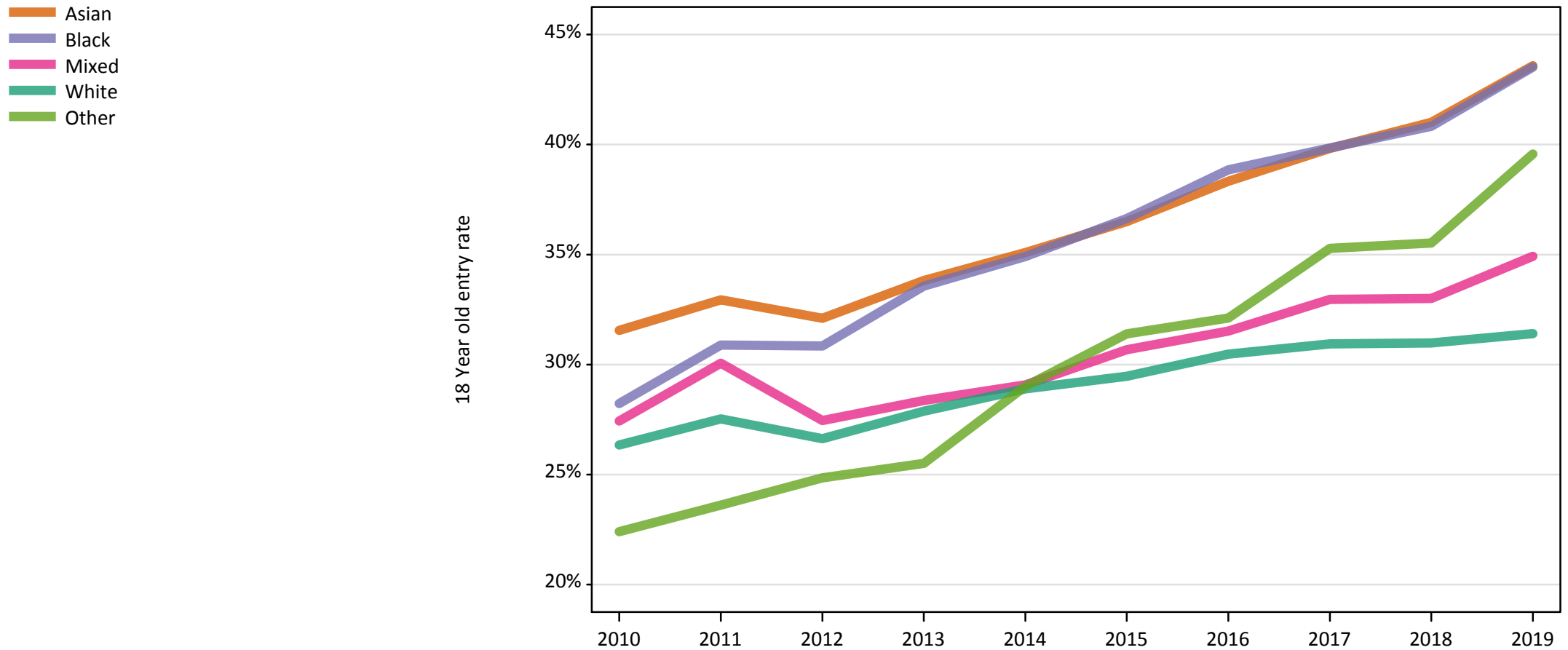
Placed 18 year old applicants: change relative to 2018 cycle totals

Applicant Status	Ethnic group	2010	2011	2012	2013	2014	2015	2016	2017	2018	2019
Placed	Asian	-37%	-33%	-33%	-28%	-23%	-17%	-11%	-5%	0%	10%
	Black	-44%	-36%	-34%	-24%	-19%	-11%	-7%	-4%	0%	9%
	Mixed	-41%	-32%	-33%	-28%	-22%	-12%	-7%	-1%	0%	7%
	White	-0%	1%	-3%	-1%	1%	4%	4%	4%	0%	-2%
	Other	-55%	-50%	-42%	-39%	-29%	-21%	-16%	-5%	0%	17%

Note: The percentage change is not recorded in the above table for groups with fewer than 10 placed applicants in that cycle or in the 2018 cycle.

E.7 Placed 18 year old applicants from UK by ethnic group: 28 days after A level results day

Placed 18 year old applicants: entry rate



E.8 Placed 18 year old applicants from UK by ethnic group: 28 days after A level results day

Placed 18 year old applicants: entry rate

Applicant Status	Ethnic group	2010	2011	2012	2013	2014	2015	2016	2017	2018	2019
Placed	Asian	31.5%	32.9%	32.1%	33.8%	35.1%	36.5%	38.3%	39.8%	41.0%	43.6%
	Black	28.2%	30.9%	30.8%	33.6%	34.9%	36.6%	38.9%	39.8%	40.8%	43.5%
	Mixed	27.4%	30.1%	27.5%	28.4%	29.1%	30.7%	31.5%	33.0%	33.0%	34.9%
	White	26.3%	27.5%	26.6%	27.9%	28.9%	29.5%	30.5%	30.9%	31.0%	31.4%
	Other	22.4%	23.6%	24.9%	25.5%	29.0%	31.4%	32.1%	35.3%	35.5%	39.6%

E.9 Placed 18 year old applicants from UK by ethnic group: 28 days after A level results day

Placed 18 year old applicants: entry rate (indexed to 100 = White ethnic group)

Applicant Status	Ethnic group	2010	2011	2012	2013	2014	2015	2016	2017	2018	2019
Placed	Asian	120	120	121	121	121	124	126	129	132	139
	Black	107	112	116	120	121	124	127	129	132	139
	Mixed	104	109	103	102	101	104	103	107	107	111
	White	100	100	100	100	100	100	100	100	100	100
	Other	85	86	93	91	100	107	105	114	115	126

E.10 Placed applicants from England by ethnic group: 28 days after A level results day

Placed applicants: change relative to 2018 cycle totals



Note: The percentage change is not plotted in the above chart for groups with fewer than 30 placed applicants in any one cycle.

E.11 Placed applicants from England by ethnic group: 28 days after A level results day

Applicant Status	Ethnic group	2010	2011	2012	2013	2014	2015	2016	2017	2018	2019
Placed	Asian	37,640	40,550	38,990	41,910	44,310	47,040	48,990	49,480	50,210	53,390
	Black	24,800	27,330	27,240	28,600	30,020	31,270	33,060	32,140	31,360	32,720
	Mixed	12,910	14,210	13,350	14,600	15,850	17,210	17,890	18,260	18,200	19,060
	White	266,590	270,280	243,440	259,890	266,190	269,290	267,270	259,990	248,050	240,770
	Other	3,940	4,270	5,140	5,350	5,910	6,490	6,860	7,440	7,440	8,130

E.12 Placed applicants from England by ethnic group: 28 days after A level results day

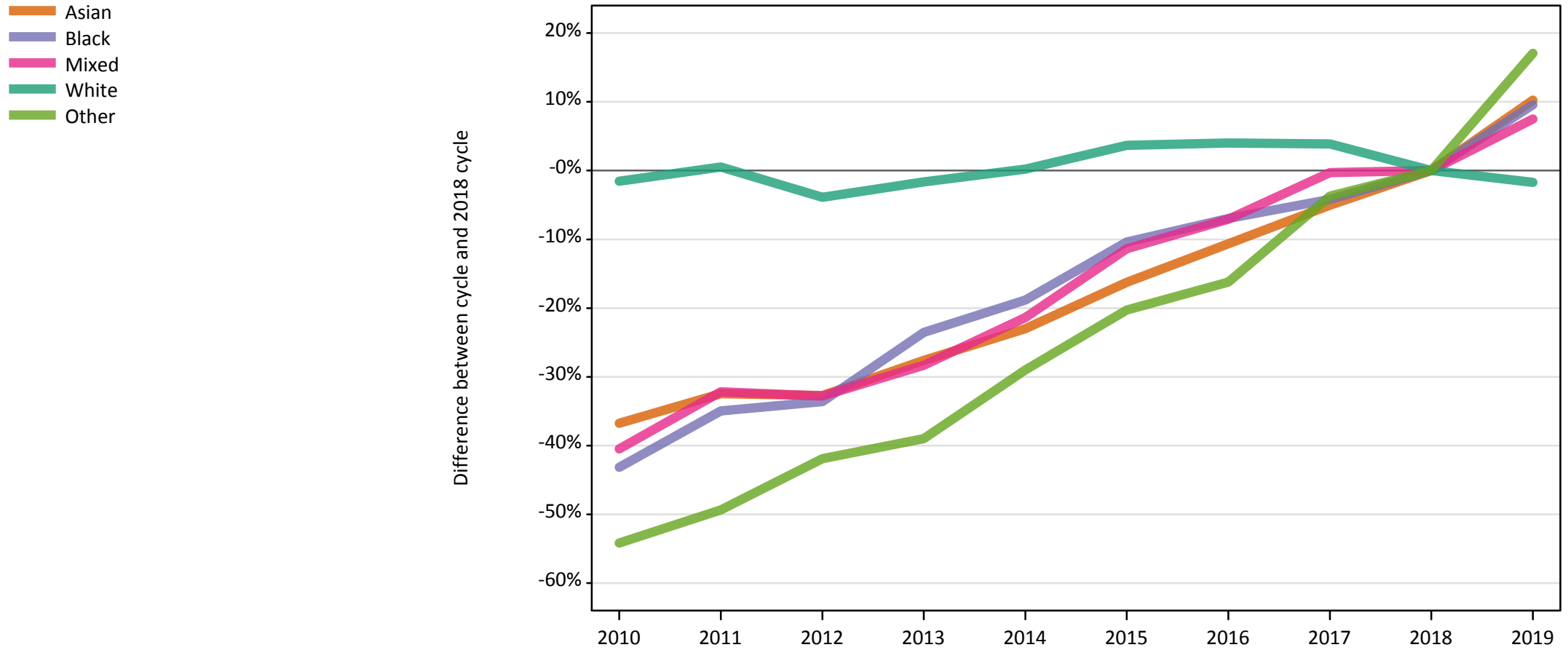
Placed applicants: change relative to 2018 cycle totals

Applicant Status	Ethnic group	2010	2011	2012	2013	2014	2015	2016	2017	2018	2019
Placed	Asian	-25%	-19%	-22%	-17%	-12%	-6%	-2%	-1%	0%	6%
	Black	-21%	-13%	-13%	-9%	-4%	-0%	5%	2%	0%	4%
	Mixed	-29%	-22%	-27%	-20%	-13%	-5%	-2%	0%	0%	5%
	White	7%	9%	-2%	5%	7%	9%	8%	5%	0%	-3%
	Other	-47%	-43%	-31%	-28%	-21%	-13%	-8%	0%	0%	9%

Note: The percentage change is not recorded in the above table for groups with fewer than 10 placed applicants in that cycle or in the 2018 cycle.

E.13 Placed 18 year old applicants from England by ethnic group: 28 days after A level results day

Placed 18 year old applicants: change relative to 2018 cycle totals



Note: The percentage change is not plotted in the above chart for groups with fewer than 30 placed applicants in any one cycle.

E.14 Placed 18 year old applicants from England by ethnic group: 28 days after A level results day

Applicant Status	Ethnic group	2010	2011	2012	2013	2014	2015	2016	2017	2018	2019
Placed	Asian	18,710	19,990	19,910	21,430	22,790	24,780	26,430	28,100	29,590	32,620
	Black	7,290	8,340	8,520	9,810	10,410	11,500	11,940	12,290	12,830	14,050
	Mixed	5,970	6,810	6,740	7,190	7,890	8,890	9,330	10,000	10,030	10,790
	White	144,540	147,560	141,120	144,400	147,140	152,210	152,710	152,520	146,800	144,300
	Other	1,670	1,840	2,110	2,220	2,580	2,900	3,050	3,500	3,640	4,260

E.15 Placed 18 year old applicants from England by ethnic group: 28 days after A level results day

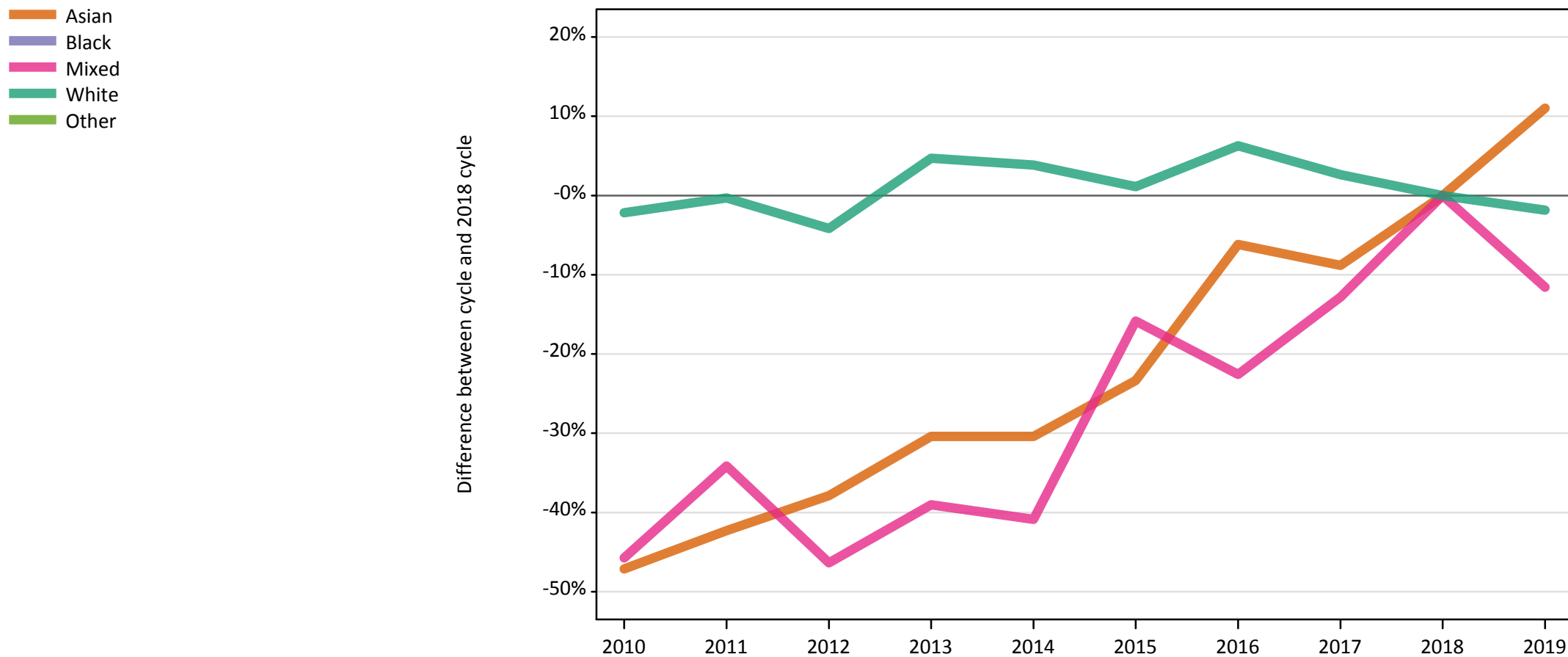
Placed 18 year old applicants: change relative to 2018 cycle totals

Applicant Status	Ethnic group	2010	2011	2012	2013	2014	2015	2016	2017	2018	2019
Placed	Asian	-37%	-32%	-33%	-28%	-23%	-16%	-11%	-5%	0%	10%
	Black	-43%	-35%	-34%	-24%	-19%	-10%	-7%	-4%	0%	10%
	Mixed	-40%	-32%	-33%	-28%	-21%	-11%	-7%	-0%	0%	8%
	White	-2%	1%	-4%	-2%	0%	4%	4%	4%	0%	-2%
	Other	-54%	-49%	-42%	-39%	-29%	-20%	-16%	-4%	0%	17%

Note: The percentage change is not recorded in the above table for groups with fewer than 10 placed applicants in that cycle or in the 2018 cycle.

E.16 Placed applicants from Northern Ireland by ethnic group: 28 days after A level results day

Placed applicants: change relative to 2018 cycle totals



Note: The percentage change is not plotted in the above chart for groups with fewer than 30 placed applicants in any one cycle.

E.17 Placed applicants from Northern Ireland by ethnic group: 28 days after A level results day

Applicant Status	Ethnic group	2010	2011	2012	2013	2014	2015	2016	2017	2018	2019
Placed	Asian	120	130	140	160	160	170	210	210	230	250
	Black	20	20	30	30	50	40	60	60	60	70
	Mixed	90	110	90	100	100	140	130	140	160	150
	White	13,260	13,510	12,990	14,190	14,080	13,710	14,410	13,910	13,550	13,300
	Other	20	10	20	20	20	10	20	30	30	30

E.18 Placed applicants from Northern Ireland by ethnic group: 28 days after A level results day

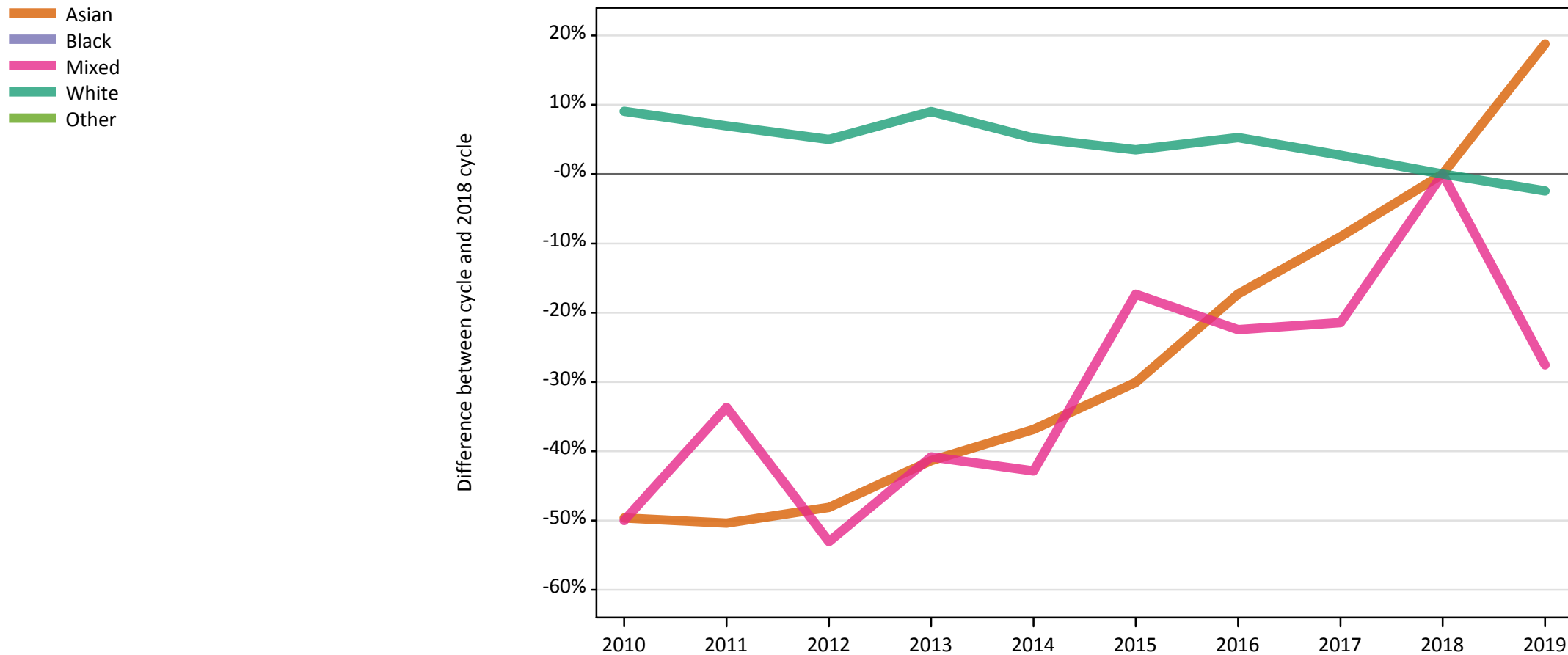
Placed applicants: change relative to 2018 cycle totals

Applicant Status	Ethnic group	2010	2011	2012	2013	2014	2015	2016	2017	2018	2019
Placed	Asian	-47%	-42%	-38%	-30%	-30%	-23%	-6%	-9%	0%	11%
	Black	-67%	-60%	-47%	-41%	-9%	-38%	5%	2%	0%	21%
	Mixed	-46%	-34%	-46%	-39%	-41%	-16%	-23%	-13%	0%	-12%
	White	-2%	-0%	-4%	5%	4%	1%	6%	3%	0%	-2%
	Other	-43%	-54%	-39%	-46%	-21%	-57%	-18%	-11%	0%	-7%

Note: The percentage change is not recorded in the above table for groups with fewer than 10 placed applicants in that cycle or in the 2018 cycle.

E.19 Placed 18 year old applicants from Northern Ireland by ethnic group: 28 days after A level results day

Placed 18 year old applicants: change relative to 2018 cycle totals



Note: The percentage change is not plotted in the above chart for groups with fewer than 30 placed applicants in any one cycle.

E.20 Placed 18 year old applicants from Northern Ireland by ethnic group: 28 days after A level results day

Applicant Status	Ethnic group	2010	2011	2012	2013	2014	2015	2016	2017	2018	2019
Placed	Asian	70	70	70	80	80	90	110	120	130	160
	Black	0	10	10	20	20	10	20	20	20	30
	Mixed	50	70	50	60	60	80	80	80	100	70
	White	8,650	8,490	8,330	8,650	8,350	8,210	8,350	8,150	7,930	7,740
	Other	10	10	10	0	10	0	10	10	20	10

E.21 Placed 18 year old applicants from Northern Ireland by ethnic group: 28 days after A level results day

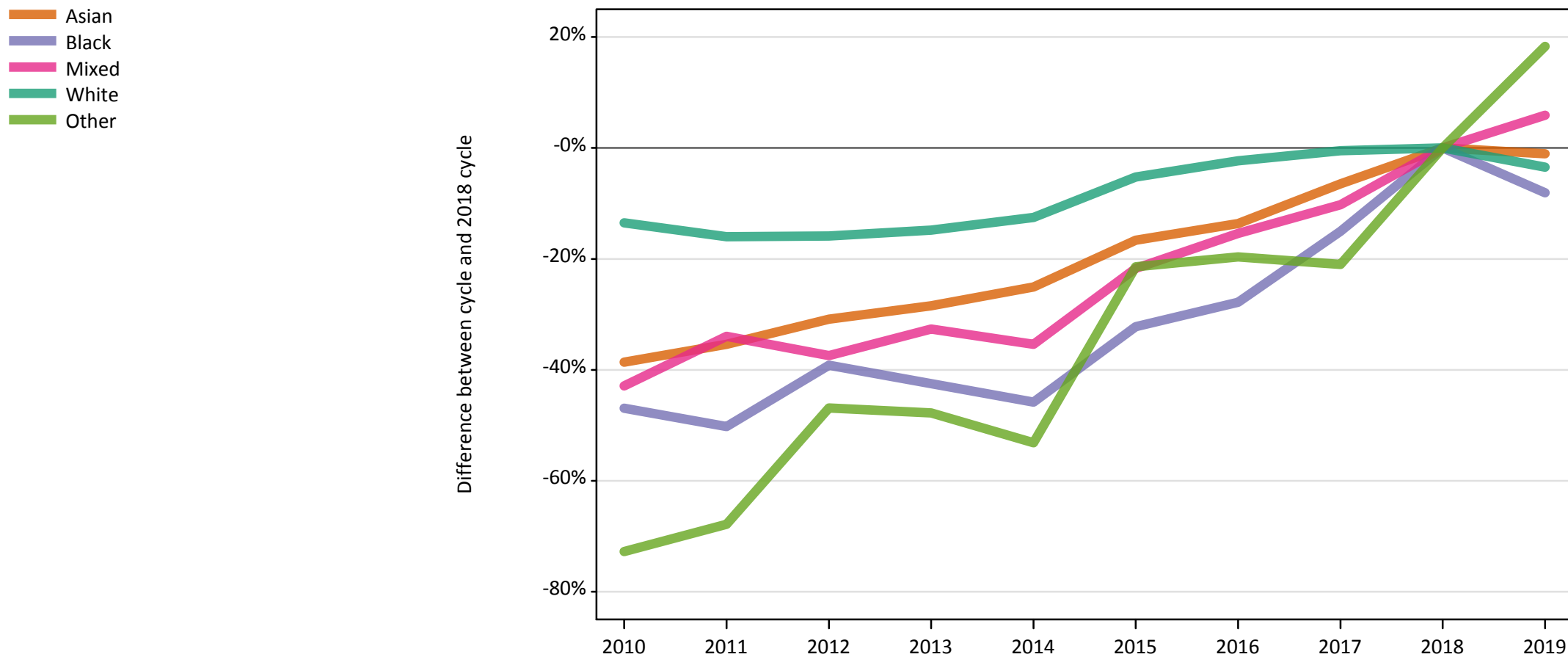
Placed 18 year old applicants: change relative to 2018 cycle totals

Applicant Status	Ethnic group	2010	2011	2012	2013	2014	2015	2016	2017	2018	2019
Placed	Asian	-50%	-50%	-48%	-41%	-37%	-30%	-17%	-9%	0%	19%
	Black			-20%	13%	27%	-33%	27%	33%	0%	67%
	Mixed	-50%	-34%	-53%	-41%	-43%	-17%	-22%	-21%	0%	-28%
	White	9%	7%	5%	9%	5%	4%	5%	3%	0%	-2%
	Other					-27%		-33%	-33%	0%	-33%

Note: The percentage change is not recorded in the above table for groups with fewer than 10 placed applicants in that cycle or in the 2018 cycle.

E.22 Placed applicants from Scotland by ethnic group: 28 days after A level results day

Placed applicants: change relative to 2018 cycle totals



Note: The percentage change is not plotted in the above chart for groups with fewer than 30 placed applicants in any one cycle.

E.23 Placed applicants from Scotland by ethnic group: 28 days after A level results day

Applicant Status	Ethnic group	2010	2011	2012	2013	2014	2015	2016	2017	2018	2019
Placed	Asian	1,010	1,070	1,140	1,180	1,240	1,380	1,430	1,550	1,650	1,640
	Black	340	320	390	360	340	430	460	540	630	580
	Mixed	400	460	440	470	450	540	590	620	700	740
	White	27,330	26,550	26,580	26,930	27,650	29,950	30,880	31,450	31,610	30,510
	Other	60	70	120	120	110	180	180	180	220	270

E.24 Placed applicants from Scotland by ethnic group: 28 days after A level results day

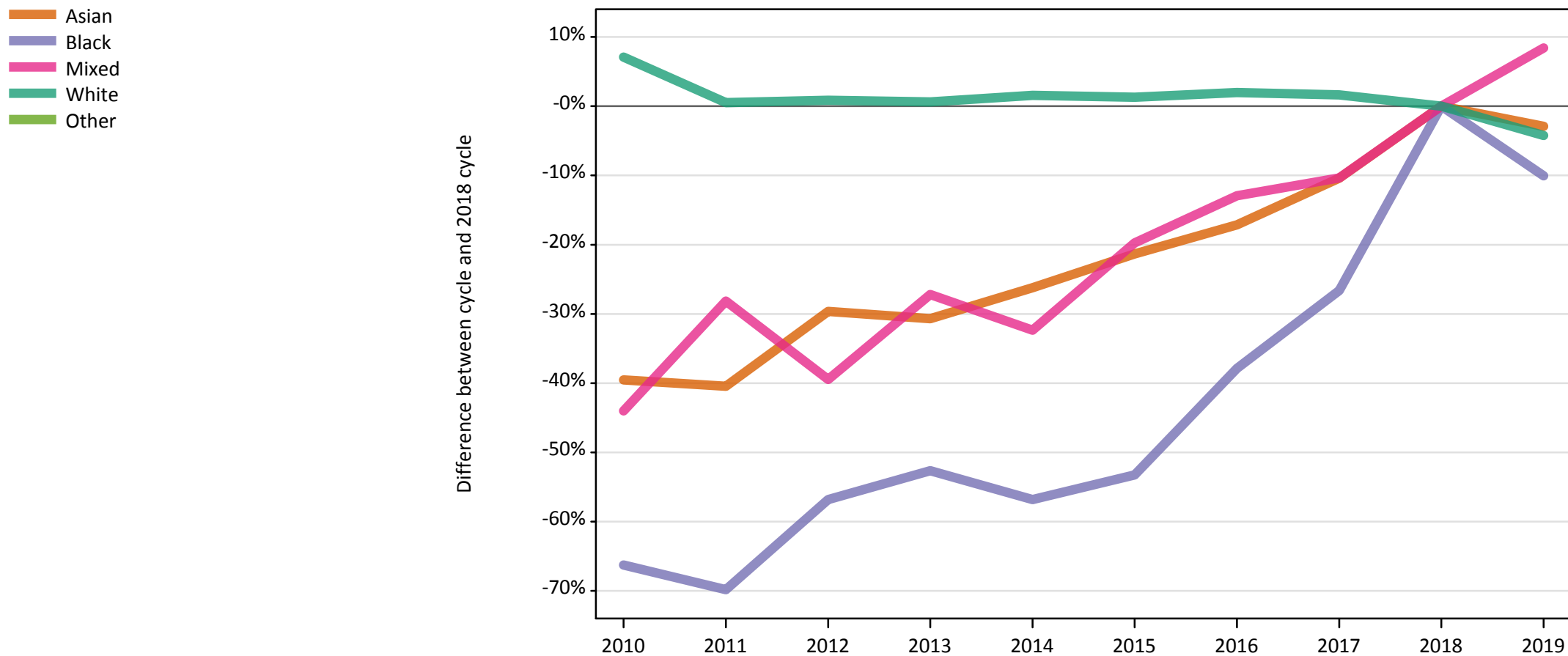
Placed applicants: change relative to 2018 cycle totals

Applicant Status	Ethnic group	2010	2011	2012	2013	2014	2015	2016	2017	2018	2019
Placed	Asian	-39%	-35%	-31%	-28%	-25%	-17%	-14%	-6%	0%	-1%
	Black	-47%	-50%	-39%	-42%	-46%	-32%	-28%	-15%	0%	-8%
	Mixed	-43%	-34%	-37%	-33%	-35%	-22%	-15%	-10%	0%	6%
	White	-14%	-16%	-16%	-15%	-13%	-5%	-2%	-0%	0%	-3%
	Other	-73%	-68%	-47%	-48%	-53%	-21%	-20%	-21%	0%	18%

Note: The percentage change is not recorded in the above table for groups with fewer than 10 placed applicants in that cycle or in the 2018 cycle.

E.25 Placed 18 year old applicants from Scotland by ethnic group: 28 days after A level results day

Placed 18 year old applicants: change relative to 2018 cycle totals



Note: The percentage change is not plotted in the above chart for groups with fewer than 30 placed applicants in any one cycle.

E.26 Placed 18 year old applicants from Scotland by ethnic group: 28 days after A level results day

Applicant Status	Ethnic group	2010	2011	2012	2013	2014	2015	2016	2017	2018	2019
Placed	Asian	460	450	530	530	560	600	630	680	760	740
	Black	60	50	70	80	70	80	110	120	170	150
	Mixed	170	220	190	230	210	250	270	280	310	340
	White	14,130	13,260	13,310	13,280	13,400	13,370	13,450	13,410	13,190	12,640
	Other	20	30	40	50	40	60	60	60	80	90

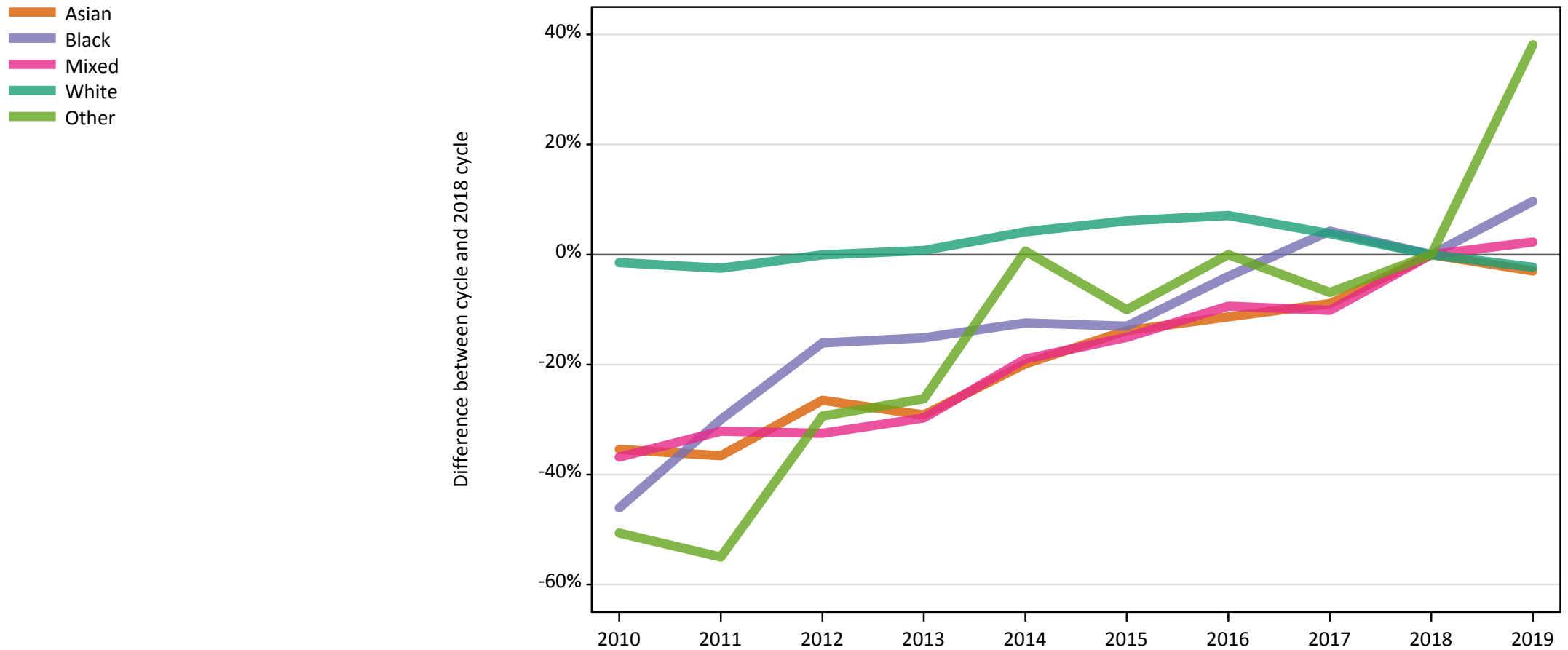
E.27 Placed 18 year old applicants from Scotland by ethnic group: 28 days after A level results day

Placed 18 year old applicants: change relative to 2018 cycle totals

Applicant Status	Ethnic group	2010	2011	2012	2013	2014	2015	2016	2017	2018	2019
Placed	Asian	-40%	-40%	-30%	-31%	-26%	-21%	-17%	-10%	0%	-3%
	Black	-66%	-70%	-57%	-53%	-57%	-53%	-38%	-27%	0%	-10%
	Mixed	-44%	-28%	-39%	-27%	-32%	-20%	-13%	-10%	0%	8%
	White	7%	1%	1%	1%	2%	1%	2%	2%	0%	-4%
	Other	-78%	-59%	-51%	-42%	-54%	-21%	-21%	-19%	0%	13%

Note: The percentage change is not recorded in the above table for groups with fewer than 10 placed applicants in that cycle or in the 2018 cycle.

E.28 Placed applicants from Wales by ethnic group: 28 days after A level results day
Placed applicants: change relative to 2018 cycle totals



Note: The percentage change is not plotted in the above chart for groups with fewer than 30 placed applicants in any one cycle.

E.29 Placed applicants from Wales by ethnic group: 28 days after A level results day

Applicant Status	Ethnic group	2010	2011	2012	2013	2014	2015	2016	2017	2018	2019
Placed	Asian	570	560	640	620	700	750	780	800	880	850
	Black	180	230	280	280	290	290	320	340	330	360
	Mixed	340	360	360	370	430	450	480	480	530	540
	White	16,560	16,390	16,800	16,930	17,500	17,830	18,000	17,450	16,810	16,420
	Other	80	70	110	120	160	140	160	150	160	220

E.30 Placed applicants from Wales by ethnic group: 28 days after A level results day

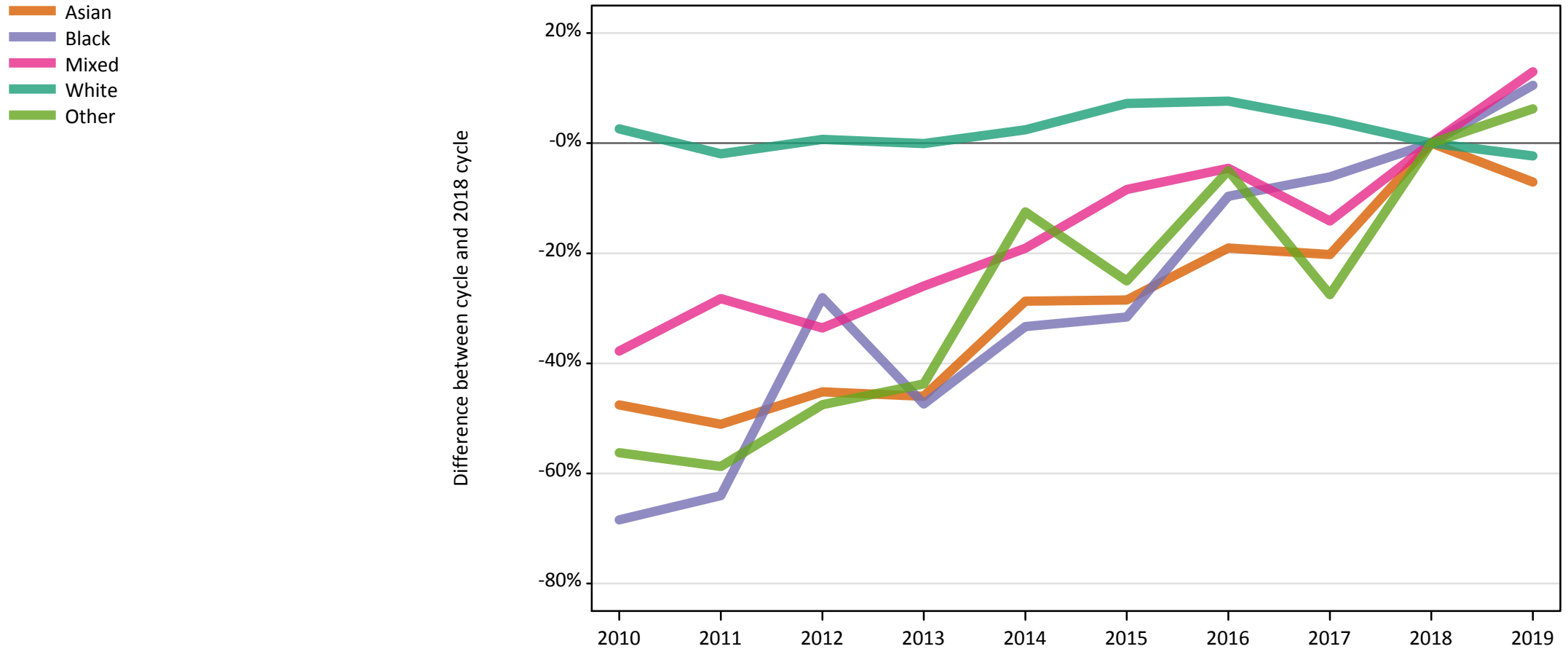
Placed applicants: change relative to 2018 cycle totals

Applicant Status	Ethnic group	2010	2011	2012	2013	2014	2015	2016	2017	2018	2019
Placed	Asian	-35%	-37%	-27%	-29%	-20%	-14%	-11%	-9%	0%	-3%
	Black	-46%	-30%	-16%	-15%	-12%	-13%	-4%	4%	0%	10%
	Mixed	-37%	-32%	-33%	-30%	-19%	-15%	-9%	-10%	0%	2%
	White	-1%	-2%	-0%	1%	4%	6%	7%	4%	0%	-2%
	Other	-51%	-55%	-29%	-26%	1%	-10%	0%	-7%	0%	38%

Note: The percentage change is not recorded in the above table for groups with fewer than 10 placed applicants in that cycle or in the 2018 cycle.

E.31 Placed 18 year old applicants from Wales by ethnic group: 28 days after A level results day

Placed 18 year old applicants: change relative to 2018 cycle totals



Note: The percentage change is not plotted in the above chart for groups with fewer than 30 placed applicants in any one cycle.

E.32 Placed 18 year old applicants from Wales by ethnic group: 28 days after A level results day

Applicant Status	Ethnic group	2010	2011	2012	2013	2014	2015	2016	2017	2018	2019
Placed	Asian	270	250	280	280	360	360	410	410	510	470
	Black	40	40	80	60	80	80	100	110	110	130
	Mixed	160	190	170	190	210	240	250	230	260	300
	White	9,360	8,950	9,190	9,120	9,350	9,780	9,820	9,510	9,120	8,910
	Other	40	30	40	50	70	60	80	60	80	90

E.33 Placed 18 year old applicants from Wales by ethnic group: 28 days after A level results day

Placed 18 year old applicants: change relative to 2018 cycle totals

Applicant Status	Ethnic group	2010	2011	2012	2013	2014	2015	2016	2017	2018	2019
Placed	Asian	-48%	-51%	-45%	-46%	-29%	-28%	-19%	-20%	0%	-7%
	Black	-68%	-64%	-28%	-47%	-33%	-32%	-10%	-6%	0%	11%
	Mixed	-38%	-28%	-34%	-26%	-19%	-8%	-5%	-14%	0%	13%
	White	3%	-2%	1%	-0%	2%	7%	8%	4%	0%	-2%
	Other	-56%	-59%	-48%	-44%	-13%	-25%	-5%	-28%	0%	6%

Note: The percentage change is not recorded in the above table for groups with fewer than 10 placed applicants in that cycle or in the 2018 cycle.