

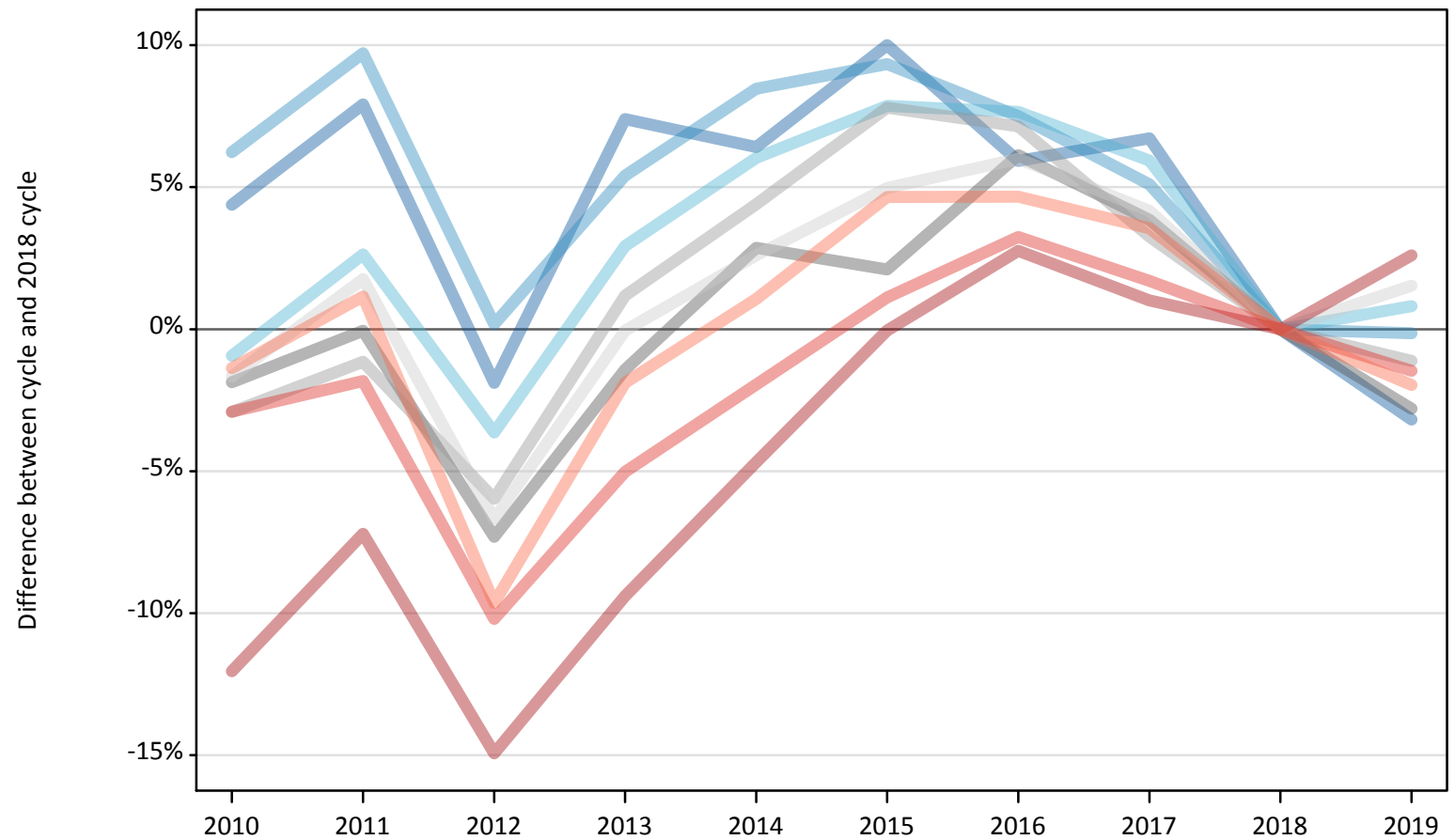
# Daily Clearing Analysis: Region

Analysis at 00:05 on Thursday 12 September 2019 (28 days after A level results day)

## R.1 Placed applicants by region of domicile: 28 days after A level results day

Placed applicants: change relative to 2018 cycle totals

- North East
- North West
- Yorkshire and The Humber
- East Midlands
- West Midlands
- East of England
- London
- South East
- South West



Note: The percentage change is not plotted in the above chart for groups with fewer than 30 placed applicants in any one cycle.

## R.2 Placed applicants by region of domicile: 28 days after A level results day

Applicant Status	Domicile	2010	2011	2012	2013	2014	2015	2016	2017	2018	2019
Placed	North East	15,480	16,010	14,550	15,930	15,790	16,320	15,710	15,830	14,830	14,360
	North West	48,420	50,000	45,650	48,040	49,430	49,830	48,990	47,900	45,570	45,510
	Yorkshire and The Humber	31,690	32,840	30,830	32,930	33,920	34,510	34,440	33,890	31,990	32,250
	East Midlands	27,040	27,540	25,540	27,160	28,350	28,140	29,250	28,620	27,560	26,790
	West Midlands	36,120	36,780	34,990	37,650	38,840	40,110	39,860	38,410	37,200	36,790
	East of England	35,940	37,190	34,110	36,530	37,500	38,370	38,740	38,070	36,550	37,110
	London	64,110	67,630	62,000	66,040	69,470	72,860	74,900	73,630	72,890	74,790
	South East	57,390	58,040	53,080	56,140	57,960	59,780	61,030	60,120	59,110	58,250
	South West	32,560	33,390	29,830	32,390	33,370	34,550	34,550	34,190	33,010	32,360
	(England total)	348,750	359,420	330,580	352,810	364,620	374,440	377,480	370,650	358,730	358,200
	Scotland	29,270	28,600	28,770	29,200	29,900	32,660	33,760	34,580	35,080	34,010
	Northern Ireland	13,540	13,810	13,290	14,520	14,430	14,110	14,860	14,400	14,070	13,850
	Wales	17,790	17,690	18,270	18,400	19,180	19,560	19,830	19,350	18,850	18,500
	UK	409,350	419,520	390,910	414,920	428,120	440,770	445,940	438,980	426,730	424,550

### R.3 Placed applicants by region of domicile: 28 days after A level results day

Placed applicants: change relative to 2018 cycle totals

Applicant Status	Domicile	2010	2011	2012	2013	2014	2015	2016	2017	2018	2019
Placed	North East	4%	8%	-2%	7%	6%	10%	6%	7%	0%	-3%
	North West	6%	10%	0%	5%	8%	9%	7%	5%	0%	-0%
	Yorkshire and The Humber	-1%	3%	-4%	3%	6%	8%	8%	6%	0%	1%
	East Midlands	-2%	-0%	-7%	-1%	3%	2%	6%	4%	0%	-3%
	West Midlands	-3%	-1%	-6%	1%	4%	8%	7%	3%	0%	-1%
	East of England	-2%	2%	-7%	-0%	3%	5%	6%	4%	0%	2%
	London	-12%	-7%	-15%	-9%	-5%	-0%	3%	1%	0%	3%
	South East	-3%	-2%	-10%	-5%	-2%	1%	3%	2%	0%	-1%
	South West	-1%	1%	-10%	-2%	1%	5%	5%	4%	0%	-2%
	(England total)	-3%	0%	-8%	-2%	2%	4%	5%	3%	0%	-0%
	Scotland	-17%	-18%	-18%	-17%	-15%	-7%	-4%	-1%	0%	-3%
	Northern Ireland	-4%	-2%	-6%	3%	3%	0%	6%	2%	0%	-2%
	Wales	-6%	-6%	-3%	-2%	2%	4%	5%	3%	0%	-2%
UK	-4%	-2%	-8%	-3%	0%	3%	5%	3%	0%	-1%	

Note: The percentage change is not recorded in the above table for groups with fewer than 10 placed applicants in that cycle or in the 2018 cycle.

#### R.4 Placed applicants by region of domicile: 28 days after A level results day

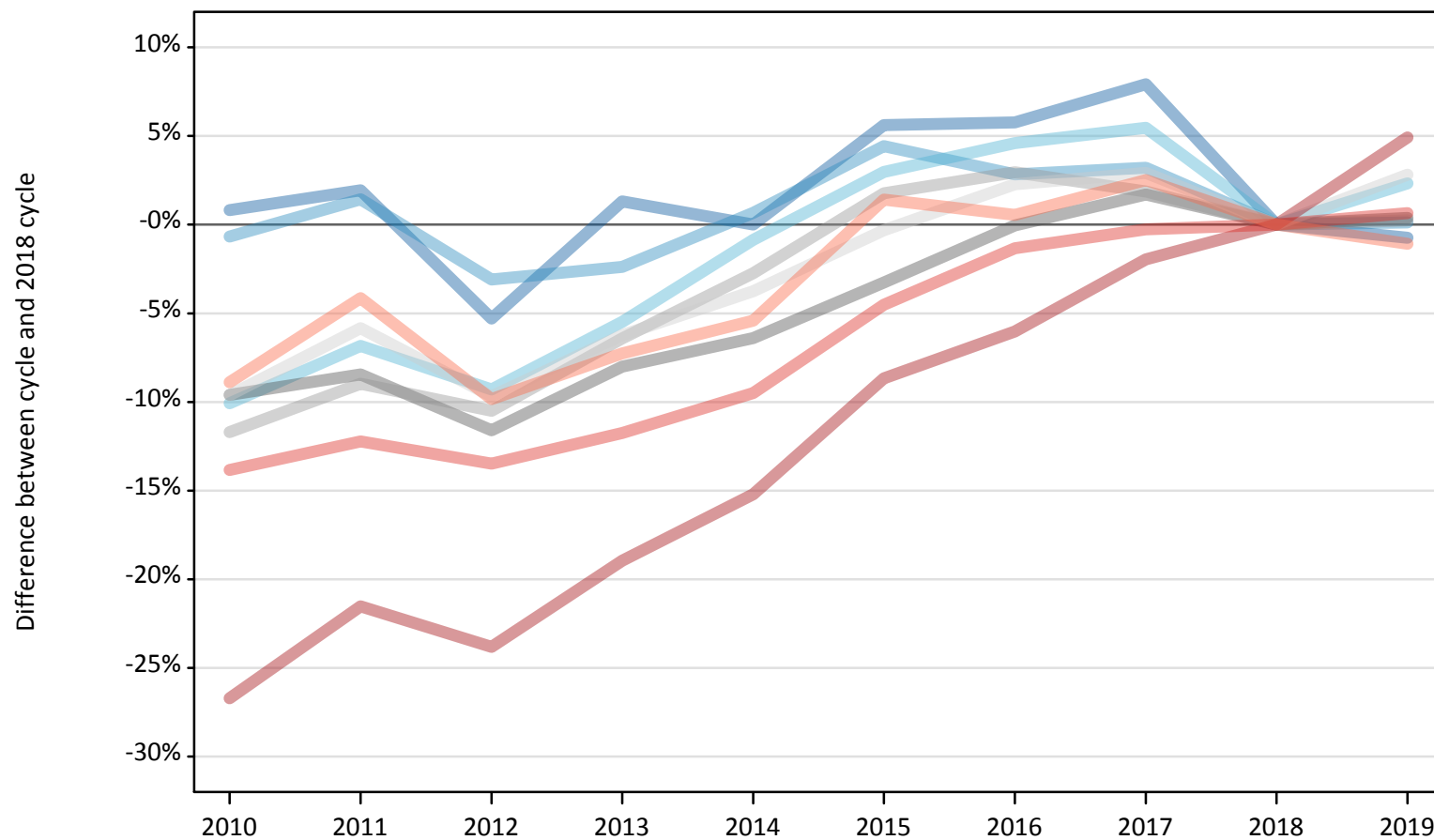
Placed applicants: absolute change relative to 2018 cycle totals

Applicant Status	Domicile	2010	2011	2012	2013	2014	2015	2016	2017	2018	2019
Placed	North East	650	1,170	-280	1,100	950	1,480	880	1,000	0	-470
	North West	2,840	4,430	80	2,460	3,860	4,250	3,420	2,320	0	-70
	Yorkshire and The Humber	-300	840	-1,160	940	1,930	2,520	2,450	1,900	0	260
	East Midlands	-510	-20	-2,010	-390	790	580	1,690	1,060	0	-770
	West Midlands	-1,090	-430	-2,220	440	1,640	2,900	2,660	1,210	0	-410
	East of England	-610	650	-2,440	-20	950	1,820	2,190	1,520	0	560
	London	-8,780	-5,260	-10,890	-6,850	-3,420	-30	2,010	740	0	1,900
	South East	-1,720	-1,080	-6,030	-2,970	-1,160	660	1,920	1,000	0	-870
	South West	-450	380	-3,180	-620	350	1,540	1,540	1,170	0	-650
	(England total)	-9,970	700	-28,150	-5,920	5,900	15,720	18,760	11,930	0	-530
	Scotland	-5,810	-6,490	-6,310	-5,890	-5,190	-2,430	-1,330	-500	0	-1,080
	Northern Ireland	-540	-260	-780	450	360	40	790	330	0	-220
	Wales	-1,050	-1,150	-580	-450	330	720	990	510	0	-350
	UK	-17,380	-7,200	-35,820	-11,810	1,400	14,040	19,210	12,260	0	-2,170

## R.5 Placed 18 year old applicants by region of domicile: 28 days after A level results day

Placed 18 year old applicants: change relative to 2018 cycle totals

- North East
- North West
- Yorkshire and The Humber
- East Midlands
- West Midlands
- East of England
- London
- South East
- South West



Note: The percentage change is not plotted in the above chart for groups with fewer than 30 placed applicants in any one cycle.

## R.6 Placed 18 year old applicants by region of domicile: 28 days after A level results day

Applicant Status	Domicile	2010	2011	2012	2013	2014	2015	2016	2017	2018	2019
Placed	North East	8,150	8,240	7,660	8,190	8,090	8,540	8,550	8,730	8,090	8,030
	North West	26,100	26,650	25,460	25,650	26,450	27,440	27,020	27,120	26,280	26,310
	Yorkshire and The Humber	16,560	17,160	16,710	17,410	18,260	18,970	19,270	19,430	18,420	18,850
	East Midlands	14,600	14,780	14,280	14,860	15,120	15,620	16,140	16,420	16,150	16,210
	West Midlands	18,550	19,120	18,800	19,660	20,430	21,380	21,630	21,400	21,010	21,060
	East of England	20,240	21,090	20,230	21,000	21,560	22,330	22,910	23,050	22,400	23,030
	London	28,680	30,710	29,810	31,710	33,170	35,740	36,770	38,360	39,130	41,050
	South East	30,660	31,230	30,780	31,400	32,200	33,970	35,110	35,490	35,580	35,810
	South West	15,750	16,570	15,590	16,030	16,350	17,530	17,380	17,730	17,290	17,100
	(England total)	179,290	185,560	179,320	185,910	191,630	201,510	204,780	207,720	204,330	207,450
	Scotland	14,890	14,060	14,170	14,200	14,310	14,410	14,590	14,610	14,580	14,040
	Northern Ireland	8,800	8,640	8,470	8,820	8,520	8,420	8,580	8,410	8,210	8,030
	Wales	9,890	9,500	9,800	9,720	10,100	10,560	10,700	10,350	10,140	9,940
	UK	212,870	217,760	211,760	218,650	224,560	234,900	238,650	241,090	237,270	239,460

## R.7 Placed 18 year old applicants by region of domicile: 28 days after A level results day

Placed 18 year old applicants: change relative to 2018 cycle totals

Applicant Status	Domicile	2010	2011	2012	2013	2014	2015	2016	2017	2018	2019
Placed	North East	1%	2%	-5%	1%	0%	6%	6%	8%	0%	-1%
	North West	-1%	1%	-3%	-2%	1%	4%	3%	3%	0%	0%
	Yorkshire and The Humber	-10%	-7%	-9%	-5%	-1%	3%	5%	5%	0%	2%
	East Midlands	-10%	-8%	-12%	-8%	-6%	-3%	-0%	2%	0%	0%
	West Midlands	-12%	-9%	-11%	-6%	-3%	2%	3%	2%	0%	0%
	East of England	-10%	-6%	-10%	-6%	-4%	-0%	2%	3%	0%	3%
	London	-27%	-22%	-24%	-19%	-15%	-9%	-6%	-2%	0%	5%
	South East	-14%	-12%	-13%	-12%	-10%	-5%	-1%	-0%	0%	1%
	South West	-9%	-4%	-10%	-7%	-5%	1%	1%	3%	0%	-1%
	(England total)	-12%	-9%	-12%	-9%	-6%	-1%	0%	2%	0%	2%
	Scotland	2%	-4%	-3%	-3%	-2%	-1%	0%	0%	0%	-4%
	Northern Ireland	7%	5%	3%	7%	4%	3%	4%	2%	0%	-2%
	Wales	-3%	-6%	-3%	-4%	-0%	4%	5%	2%	0%	-2%
	UK	-10%	-8%	-11%	-8%	-5%	-1%	1%	2%	0%	1%

Note: The percentage change is not recorded in the above table for groups with fewer than 10 placed applicants in that cycle or in the 2018 cycle.

## R.8 Placed 18 year old applicants by region of domicile: 28 days after A level results day

Placed 18 year old applicants: absolute change relative to 2018 cycle totals

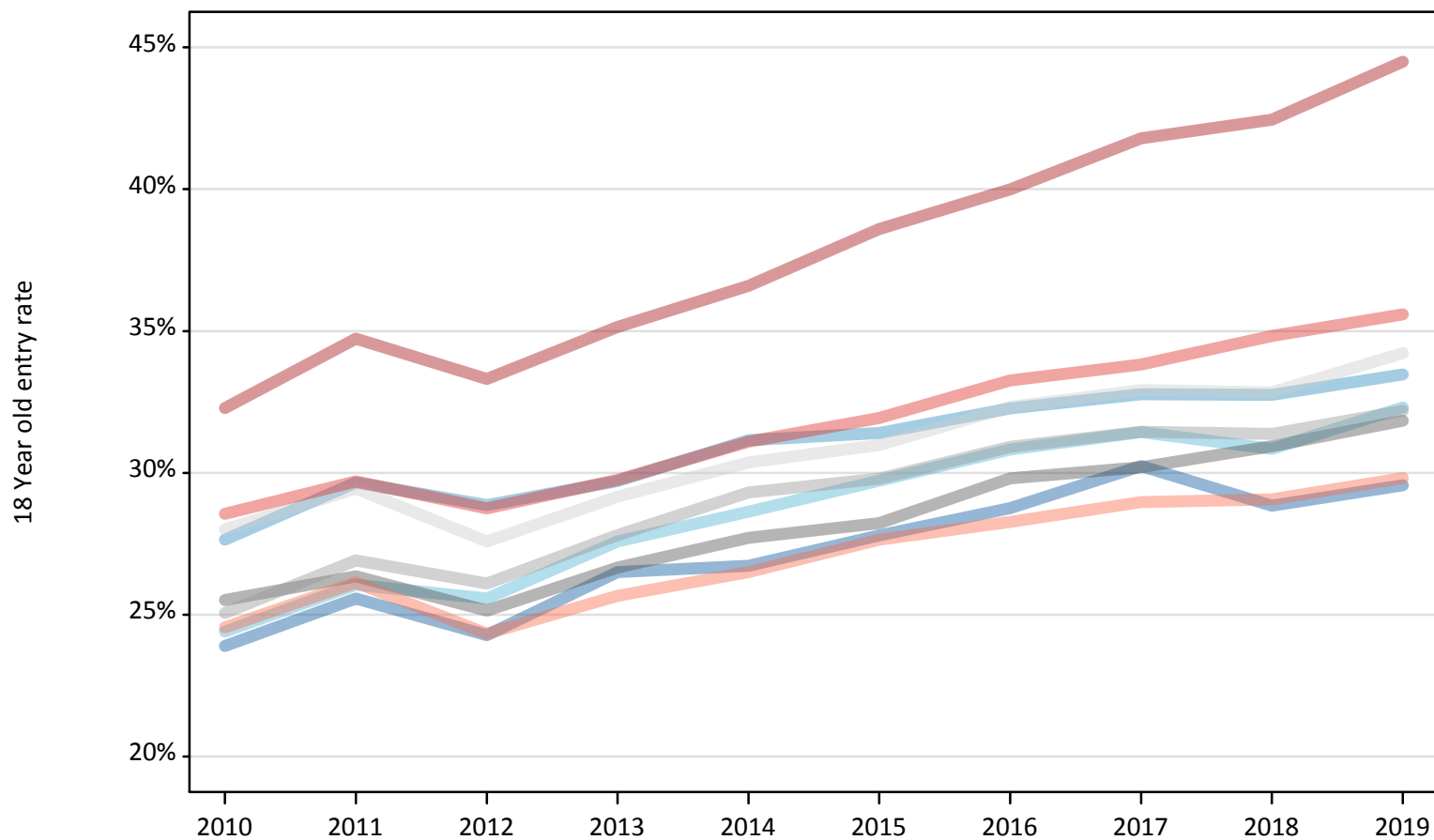
Applicant Status	Domicile	2010	2011	2012	2013	2014	2015	2016	2017	2018	2019
Placed	North East	70	160	-430	110	0	450	470	640	0	-60
	North West	-180	380	-810	-630	170	1,170	750	840	0	30
	Yorkshire and The Humber	-1,860	-1,260	-1,710	-1,010	-160	550	850	1,010	0	430
	East Midlands	-1,550	-1,370	-1,870	-1,290	-1,030	-530	-10	280	0	60
	West Midlands	-2,460	-1,890	-2,210	-1,350	-580	370	620	390	0	50
	East of England	-2,150	-1,310	-2,170	-1,390	-840	-70	510	660	0	630
	London	-10,450	-8,420	-9,320	-7,420	-5,950	-3,390	-2,360	-770	0	1,930
	South East	-4,920	-4,350	-4,800	-4,180	-3,380	-1,610	-470	-90	0	230
	South West	-1,540	-720	-1,700	-1,260	-940	240	90	440	0	-190
	(England total)	-25,040	-18,770	-25,010	-18,420	-12,700	-2,820	450	3,390	0	3,120
	Scotland	310	-520	-410	-380	-270	-170	10	30	0	-540
	Northern Ireland	590	430	260	600	310	210	370	200	0	-180
	Wales	-260	-640	-340	-420	-50	420	560	210	0	-210
	UK	-24,400	-19,510	-25,510	-18,620	-12,710	-2,370	1,380	3,830	0	2,190



## R.9 Placed 18 year old applicants by region of domicile: 28 days after A level results day

Placed 18 year old applicants: entry rate

- North East
- North West
- Yorkshire and The Humber
- East Midlands
- West Midlands
- East of England
- London
- South East
- South West



## R.10 Placed 18 year old applicants by region of domicile: 28 days after A level results day

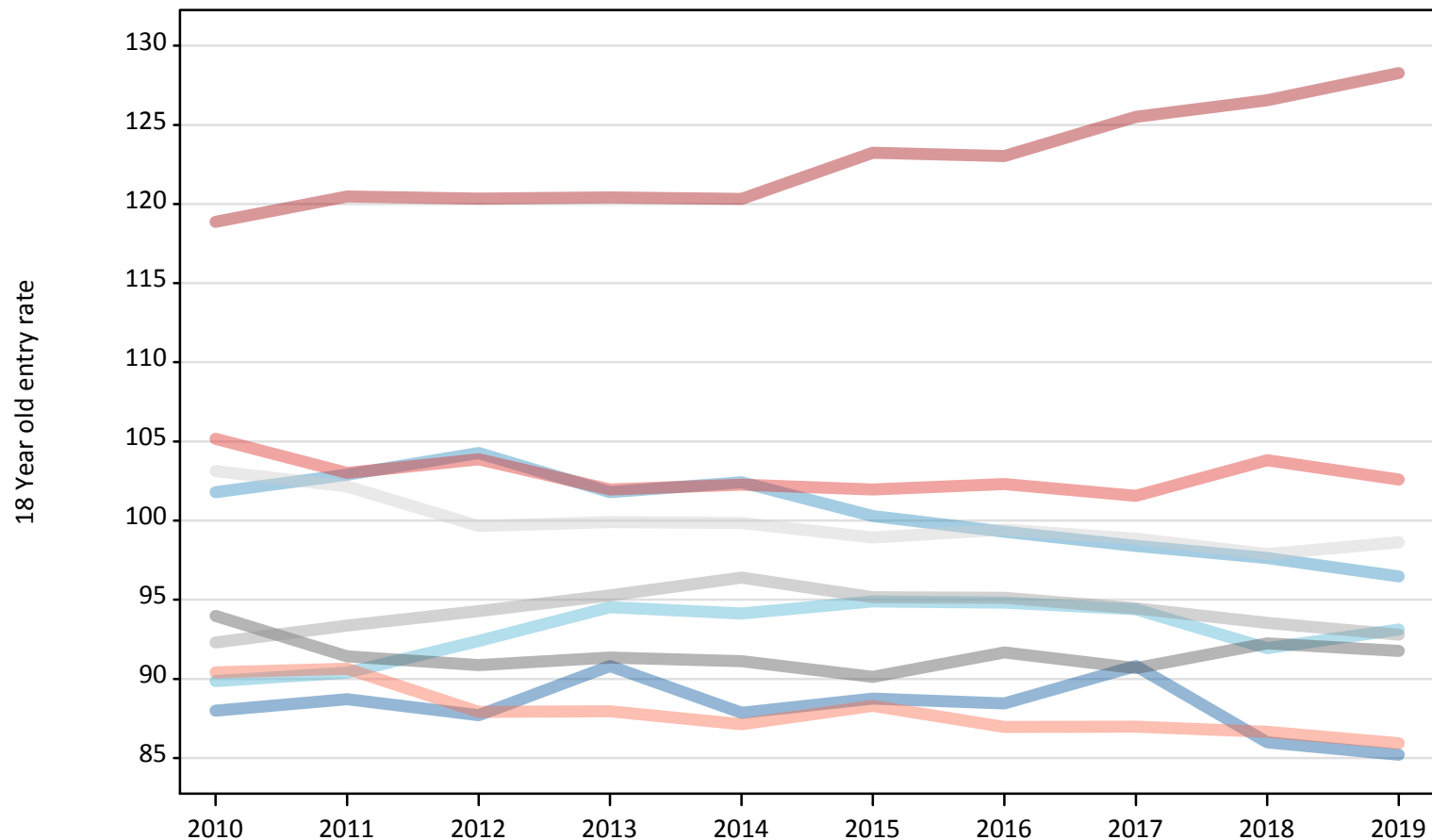
Placed 18 year old applicants: entry rate

Applicant Status	Domicile	2010	2011	2012	2013	2014	2015	2016	2017	2018	2019
Placed	North East	23.9%	25.6%	24.3%	26.5%	26.7%	27.8%	28.8%	30.2%	28.8%	29.6%
	North West	27.6%	29.7%	28.9%	29.7%	31.1%	31.4%	32.3%	32.8%	32.7%	33.5%
	Yorkshire and The Humber	24.4%	26.1%	25.6%	27.6%	28.6%	29.7%	30.8%	31.4%	30.8%	32.3%
	East Midlands	25.5%	26.4%	25.1%	26.7%	27.7%	28.2%	29.8%	30.2%	30.9%	31.8%
	West Midlands	25.1%	26.9%	26.1%	27.8%	29.3%	29.8%	30.9%	31.4%	31.4%	32.2%
	East of England	28.0%	29.5%	27.6%	29.2%	30.4%	31.0%	32.3%	32.9%	32.8%	34.2%
	London	32.3%	34.7%	33.3%	35.1%	36.6%	38.6%	40.0%	41.8%	42.4%	44.5%
	South East	28.6%	29.7%	28.8%	29.8%	31.1%	31.9%	33.3%	33.8%	34.8%	35.6%
	South West	24.5%	26.1%	24.3%	25.7%	26.5%	27.6%	28.3%	29.0%	29.1%	29.8%
	(England total)	27.2%	28.8%	27.7%	29.2%	30.4%	31.3%	32.5%	33.3%	33.5%	34.7%
	Scotland	23.3%	22.4%	22.9%	23.1%	23.4%	23.9%	24.8%	25.5%	26.2%	26.1%
	Northern Ireland	34.5%	34.6%	33.7%	36.0%	35.1%	33.9%	35.1%	34.8%	35.4%	35.9%
	Wales	24.8%	24.6%	25.4%	25.7%	26.9%	28.0%	29.5%	29.1%	29.5%	29.6%
	UK	27.0%	28.3%	27.4%	28.7%	29.8%	30.7%	31.8%	32.5%	32.8%	33.8%

### R.11 Placed 18 year old applicants by region of domicile: 28 days after A level results day

Placed 18 year old applicants: entry rates (indexed to 100 = England)

- North East
- North West
- Yorkshire and The Humber
- East Midlands
- West Midlands
- East of England
- London
- South East
- South West



**R.12 Placed 18 year old applicants by region of domicile: 28 days after A level results day**

Placed 18 year old applicants: entry rate (indexed to 100 = England)

Applicant Status	Domicile	2010	2011	2012	2013	2014	2015	2016	2017	2018	2019
Placed	North East	88	89	88	91	88	89	88	91	86	85
	North West	102	103	104	102	102	100	99	98	98	96
	Yorkshire and The Humber	90	90	92	95	94	95	95	94	92	93
	East Midlands	94	91	91	91	91	90	92	91	92	92
	West Midlands	92	93	94	95	96	95	95	94	94	93
	East of England	103	102	100	100	100	99	99	99	98	99
	London	119	120	120	120	120	123	123	125	127	128
	South East	105	103	104	102	102	102	102	102	104	103
	South West	90	91	88	88	87	88	87	87	87	86
	(England total)	100	100	100	100	100	100	100	100	100	100