

## B7 Nursing analysis at 00:05 on Thursday 12 September 2019 (28 days after A level results day)

### CB.1 Placed applicants to nursing by country of domicile and age group, 2019 cycle (28 days after A level results day)

Domicile of applicant	Age group				
	17 and under	18	19	20 to 24	25 and over
England	10	5,240	2,500	4,560	8,740
Northern Ireland	0	350	190	260	300
Scotland	30	700	370	810	1,660
Wales	0	360	250	440	760
UK	30	6,650	3,300	6,070	11,450

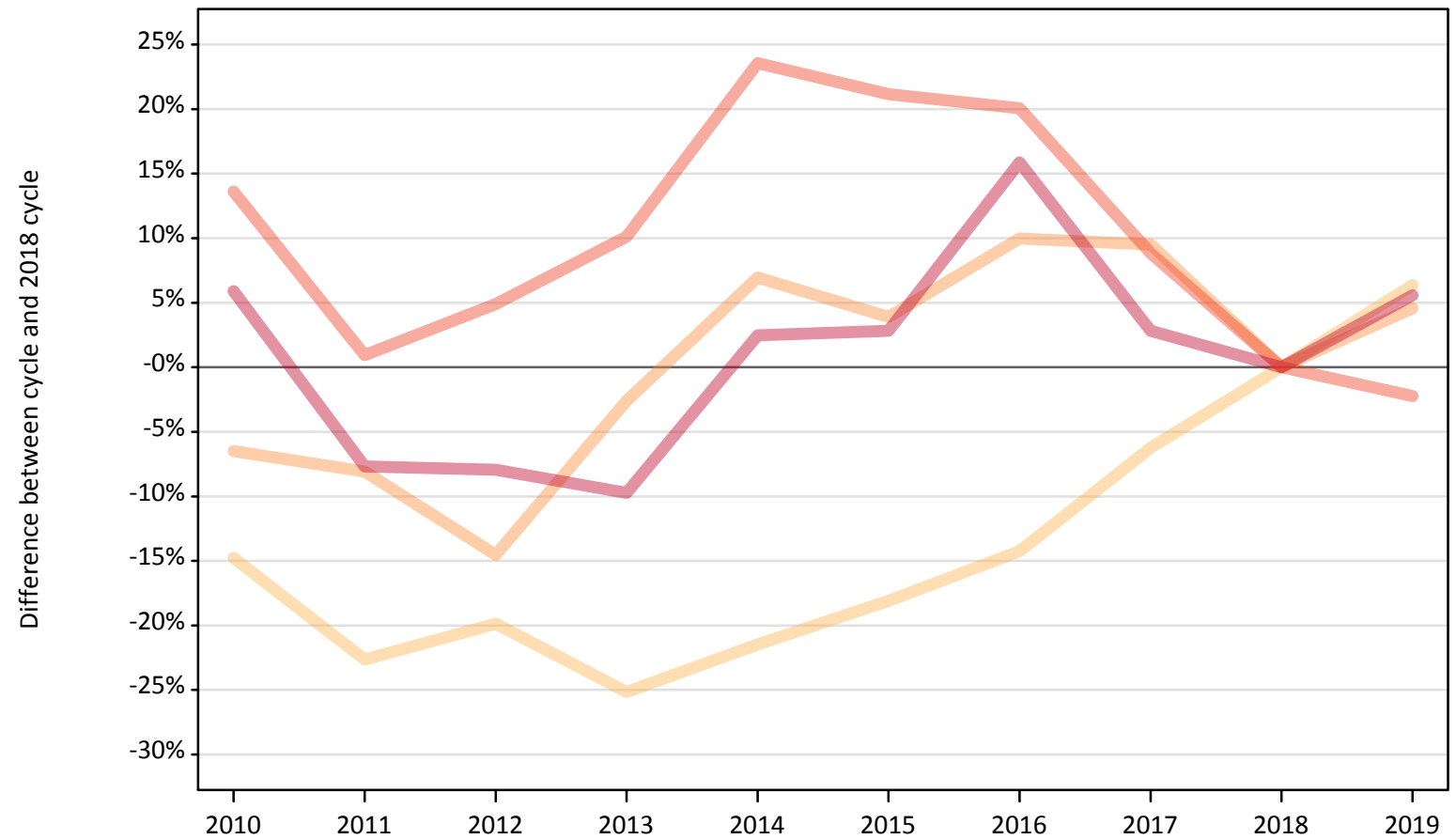
### CB.2 Proportion of 18 year old population placed to nursing by country of domicile, 2019 cycle (28 days after A level results day)

Domicile of applicant	Age group	2019
England	18	0.9%
Northern Ireland	18	1.6%
Scotland	18	1.3%
Wales	18	1.1%

### CB.3 Placed applicants to nursing from England by age group at 28 days after A level results day

Selected age groups: difference between cycle and 2018 cycle

- 17 and under
- 18
- 19
- 20 to 24
- 25 and over



Note: The percentage change is not plotted in the above chart for groups with fewer than 30 placed applicants in any one cycle.

### CB.4 Placed applicants to nursing from England by age group at 28 days after A level results day

All age groups

Domicile of applicant	Age group	2010	2011	2012	2013	2014	2015	2016	2017	2018	2019
England	17 and under	80	30	0	0	10	0	0	10	10	10
	18	4,200	3,810	3,950	3,690	3,870	4,030	4,220	4,620	4,920	5,240
	19	2,230	2,190	2,040	2,330	2,550	2,480	2,630	2,610	2,390	2,500
	20 to 24	5,300	4,710	4,890	5,130	5,760	5,650	5,600	5,070	4,660	4,560
	25 and over	8,770	7,640	7,620	7,470	8,480	8,510	9,590	8,510	8,280	8,740

### CB.5 Placed applicants to nursing from England by age group at 28 days after A level results day

Selected age groups: difference between cycle and 2018 cycle

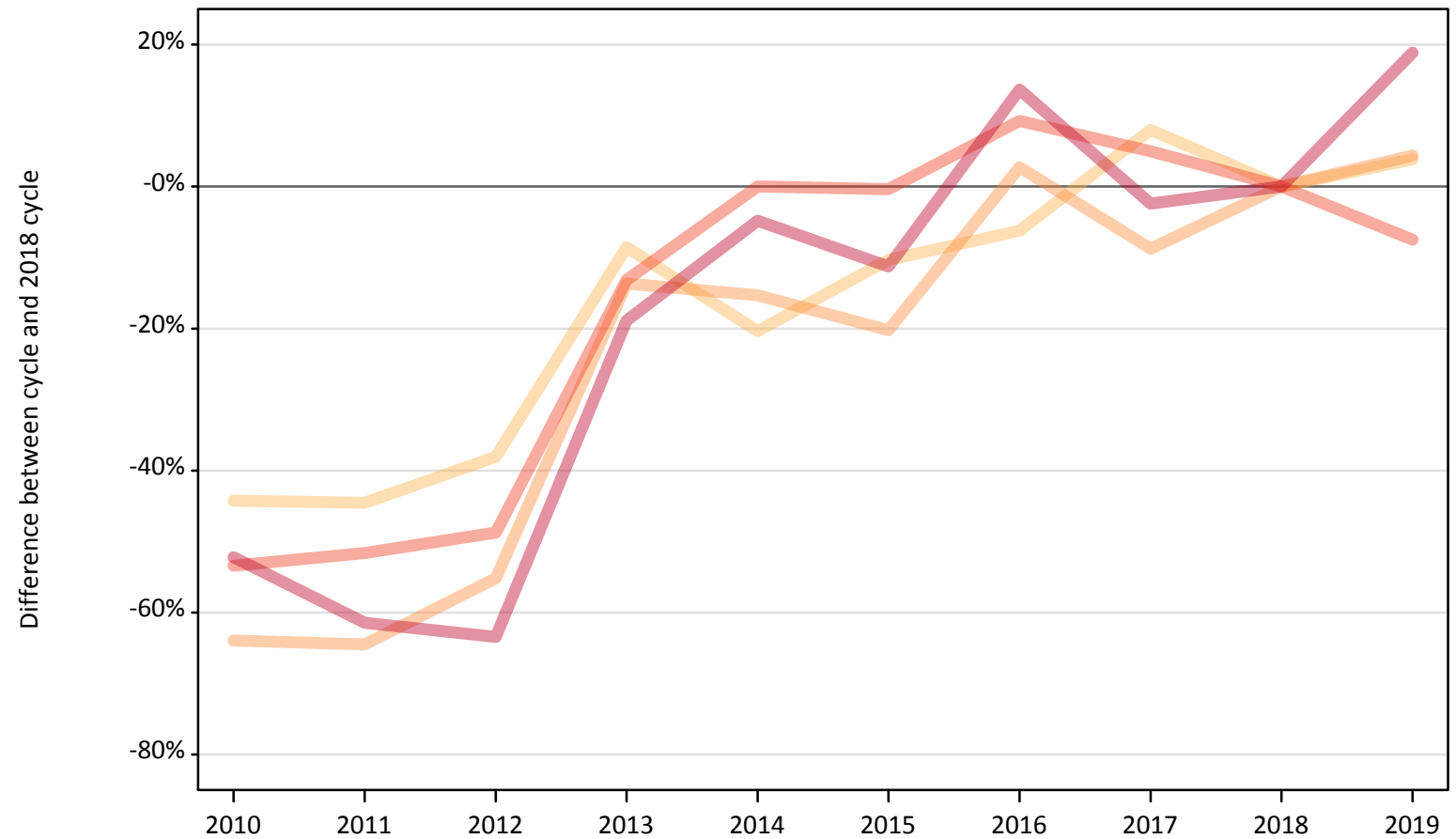
Domicile of applicant	Age group	2010	2011	2012	2013	2014	2015	2016	2017	2018	2019
England	17 and under										
	18	-15%	-23%	-20%	-25%	-21%	-18%	-14%	-6%	0%	6%
	19	-6%	-8%	-15%	-3%	7%	4%	10%	10%	0%	5%
	20 to 24	14%	1%	5%	10%	24%	21%	20%	9%	0%	-2%
	25 and over	6%	-8%	-8%	-10%	2%	3%	16%	3%	0%	6%

Note: The percentage change is not recorded in the above table for groups with fewer than 10 placed applicants in that cycle or in the 2018 cycle.

## CB.6 Placed applicants to nursing from Northern Ireland by age group at 28 days after A level results day

Selected age groups: difference between cycle and 2018 cycle

- 17 and under
- 18
- 19
- 20 to 24
- 25 and over



Note: The percentage change is not plotted in the above chart for groups with fewer than 30 placed applicants in any one cycle.

### CB.7 Placed applicants to nursing from Northern Ireland by age group at 28 days after A level results day

All age groups

Domicile of applicant	Age group	2010	2011	2012	2013	2014	2015	2016	2017	2018	2019
Northern Ireland	17 and under	0	0	0	0	0	0	0	0	0	0
	18	190	190	210	310	270	300	320	370	340	350
	19	70	70	80	160	160	150	190	170	180	190
	20 to 24	130	140	140	240	280	280	310	300	280	260
	25 and over	120	100	90	200	240	220	280	240	250	300

### CB.8 Placed applicants to nursing from Northern Ireland by age group at 28 days after A level results day

Selected age groups: difference between cycle and 2018 cycle

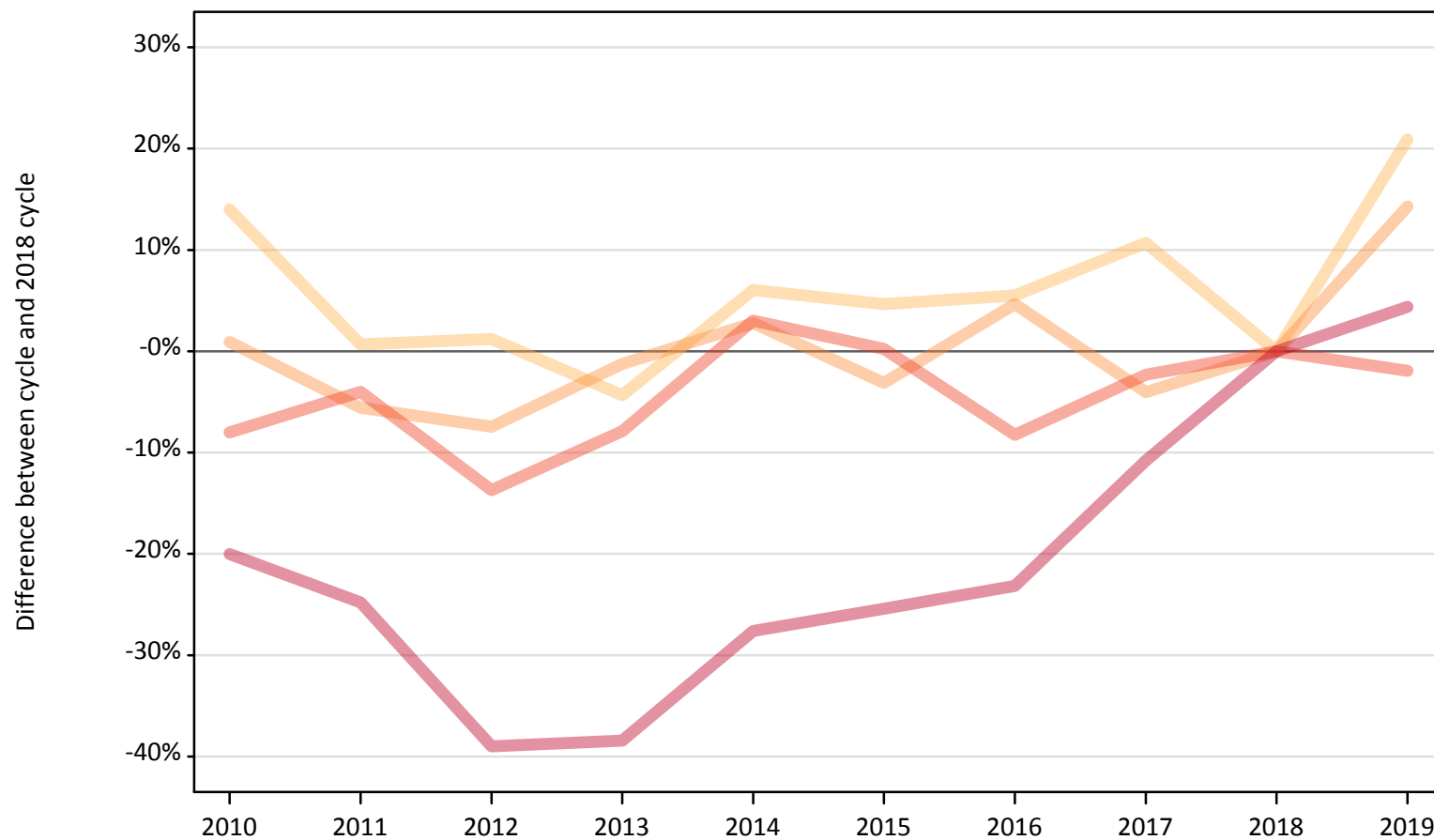
Domicile of applicant	Age group	2010	2011	2012	2013	2014	2015	2016	2017	2018	2019
Northern Ireland	17 and under										
	18	-44%	-45%	-38%	-9%	-20%	-10%	-6%	8%	0%	4%
	19	-64%	-64%	-55%	-14%	-15%	-20%	3%	-9%	0%	4%
	20 to 24	-53%	-52%	-49%	-13%	0%	-0%	9%	5%	0%	-7%
	25 and over	-52%	-61%	-63%	-19%	-5%	-11%	14%	-2%	0%	19%

Note: The percentage change is not recorded in the above table for groups with fewer than 10 placed applicants in that cycle or in the 2018 cycle.

### CB.9 Placed applicants to nursing from Scotland by age group at 28 days after A level results day

Selected age groups: difference between cycle and 2018 cycle

- 17 and under
- 18
- 19
- 20 to 24
- 25 and over



Note: The percentage change is not plotted in the above chart for groups with fewer than 30 placed applicants in any one cycle.

### CB.10 Placed applicants to nursing from Scotland by age group at 28 days after A level results day

All age groups

Domicile of applicant	Age group	2010	2011	2012	2013	2014	2015	2016	2017	2018	2019
Scotland	17 and under	40	30	30	20	20	10	20	20	20	30
	18	660	580	590	550	610	610	610	640	580	700
	19	330	300	300	320	330	310	340	310	320	370
	20 to 24	760	790	710	760	850	830	760	810	830	810
	25 and over	1,270	1,200	970	980	1,150	1,190	1,220	1,420	1,590	1,660

### CB.11 Placed applicants to nursing from Scotland by age group at 28 days after A level results day

Selected age groups: difference between cycle and 2018 cycle

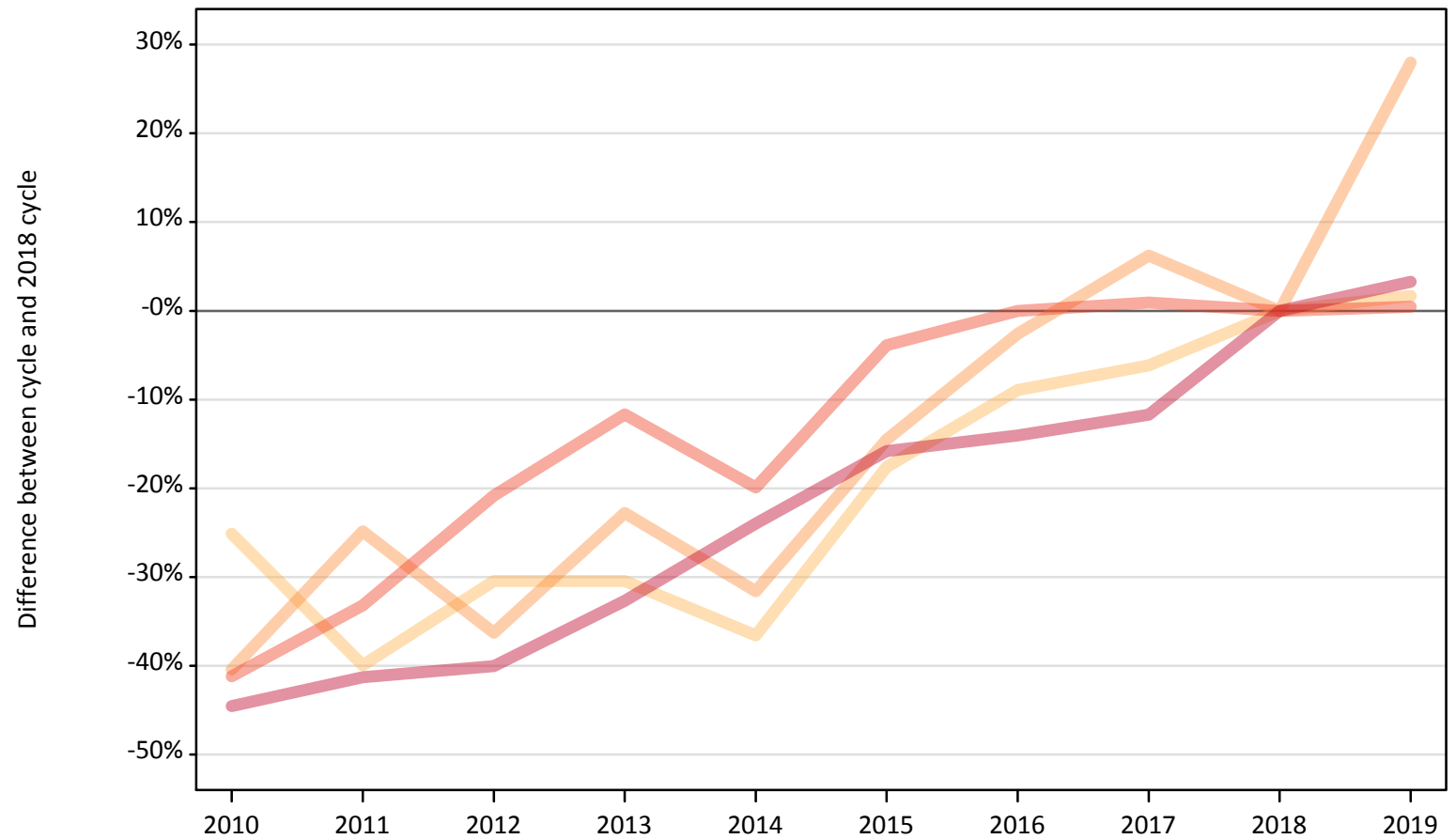
Domicile of applicant	Age group	2010	2011	2012	2013	2014	2015	2016	2017	2018	2019
Scotland	17 and under	132%	32%	37%	26%	-5%	-32%	-11%	21%	0%	37%
	18	14%	1%	1%	-4%	6%	5%	6%	11%	0%	21%
	19	1%	-6%	-7%	-1%	3%	-3%	5%	-4%	0%	14%
	20 to 24	-8%	-4%	-14%	-8%	3%	0%	-8%	-2%	0%	-2%
	25 and over	-20%	-25%	-39%	-38%	-28%	-25%	-23%	-11%	0%	4%

Note: The percentage change is not recorded in the above table for groups with fewer than 10 placed applicants in that cycle or in the 2018 cycle.

### CB.12 Placed applicants to nursing from Wales by age group at 28 days after A level results day

Selected age groups: difference between cycle and 2018 cycle

- 17 and under
- 18
- 19
- 20 to 24
- 25 and over



Note: The percentage change is not plotted in the above chart for groups with fewer than 30 placed applicants in any one cycle.



### CB.13 Placed applicants to nursing from Wales by age group at 28 days after A level results day

All age groups

Domicile of applicant	Age group	2010	2011	2012	2013	2014	2015	2016	2017	2018	2019
Wales	17 and under	0	0	0	0	0	0	0	0	0	0
	18	270	220	250	250	230	300	330	340	360	360
	19	120	150	120	150	130	170	190	210	190	250
	20 to 24	260	290	350	390	350	420	440	440	440	440
	25 and over	410	430	440	490	560	620	630	650	730	760

### CB.14 Placed applicants to nursing from Wales by age group at 28 days after A level results day

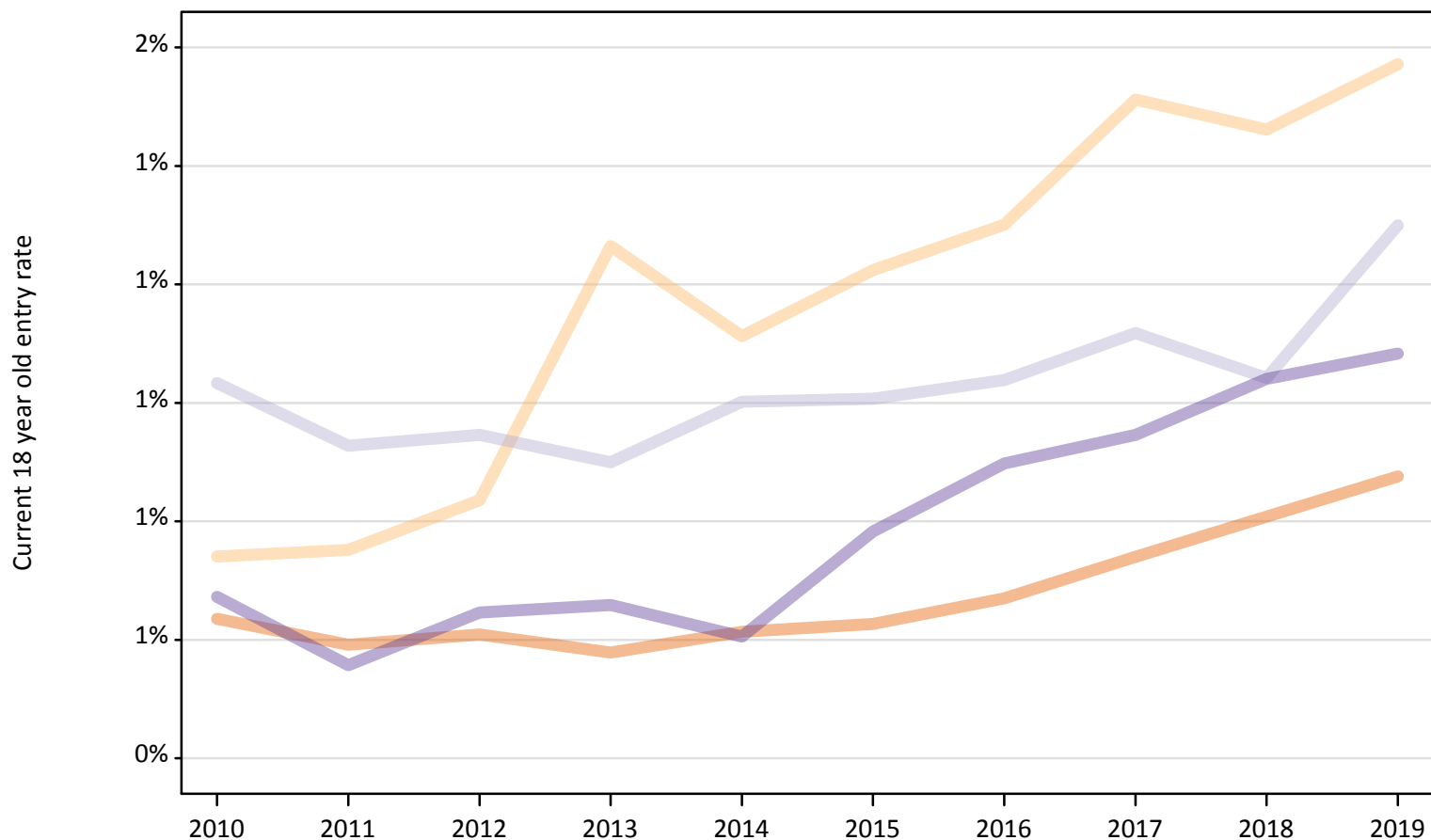
Selected age groups: difference between cycle and 2018 cycle

Domicile of applicant	Age group	2010	2011	2012	2013	2014	2015	2016	2017	2018	2019
Wales	17 and under										
	18	-25%	-40%	-30%	-30%	-37%	-18%	-9%	-6%	0%	2%
	19	-40%	-25%	-36%	-23%	-32%	-15%	-3%	6%	0%	28%
	20 to 24	-41%	-33%	-21%	-12%	-20%	-4%	0%	1%	0%	0%
	25 and over	-45%	-41%	-40%	-33%	-24%	-16%	-14%	-12%	0%	3%

Note: The percentage change is not recorded in the above table for groups with fewer than 10 placed applicants in that cycle or in the 2018 cycle.

**CB.15 Entry rates to nursing for 18 year olds by UK country of domicile: 28 days after A level results day**

Placed 18 year old applicants as a proportion of the 18 year old population



**CB.16 Entry rates to nursing for 18 year olds by UK country of domicile: 28 days after A level results day**

Placed 18 year old applicants as a proportion of the 18 year old population

Domicile of applicant	Age group	2010	2011	2012	2013	2014	2015	2016	2017	2018	2019
England	18	0.6%	0.6%	0.6%	0.6%	0.6%	0.6%	0.7%	0.7%	0.8%	0.9%
Northern Ireland	18	0.7%	0.8%	0.8%	1.3%	1.1%	1.2%	1.3%	1.5%	1.5%	1.6%
Scotland	18	1.0%	0.9%	0.9%	0.9%	1.0%	1.0%	1.0%	1.1%	1.0%	1.3%
Wales	18	0.7%	0.6%	0.6%	0.7%	0.6%	0.8%	0.9%	0.9%	1.0%	1.1%