

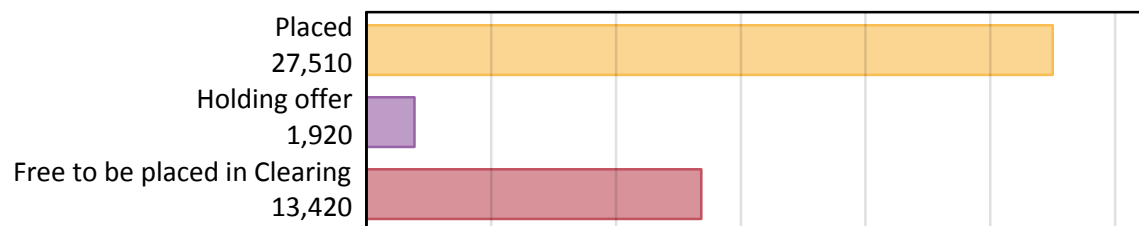
Daily Clearing Analysis: Overview

B7 Nursing analysis at 00:05 on Thursday 12 September 2019 (28 days after A level results day)

AB.1 Placed applicants to nursing from the UK, 2019 cycle

Applicant type	Status	2019
Main scheme	Placed (Clearing)	1,970
	Placed (Adjustment)	10
	Placed (Firm)	22,870
	Placed (Insurance)	600
	Placed (Other)	1,290
	Holding offer	1,920
	Free to be placed in Clearing	13,420
Direct to Clearing	Placed (Direct to Clearing)	760
	Other (Direct to Clearing)	430
All applicants	Placed	27,510

AB.2 Summary of nursing applicants who are placed, holding offers or free to be placed in Clearing (the UK)



AB.3 Placed applicants to nursing from the UK: 28 days after A level results day

Placed applicants to nursing: difference between cycle and 2018 cycle



Note: The percentage change is not plotted in the above chart for groups with fewer than 30 placed applicants in any one cycle.

AB.4 Placed applicants to nursing from the UK: 28 days after A level results day

Placed applicants to nursing: applicants at 28 days after A level results day

Applicant type	Status	2010	2011	2012	2013	2014	2015	2016	2017	2018	2019
All applicants	Placed	25,190	22,850	22,780	23,450	25,840	26,070	27,660	26,720	26,370	27,510

AB.5 Placed applicants to nursing from the UK: 28 days after A level results day

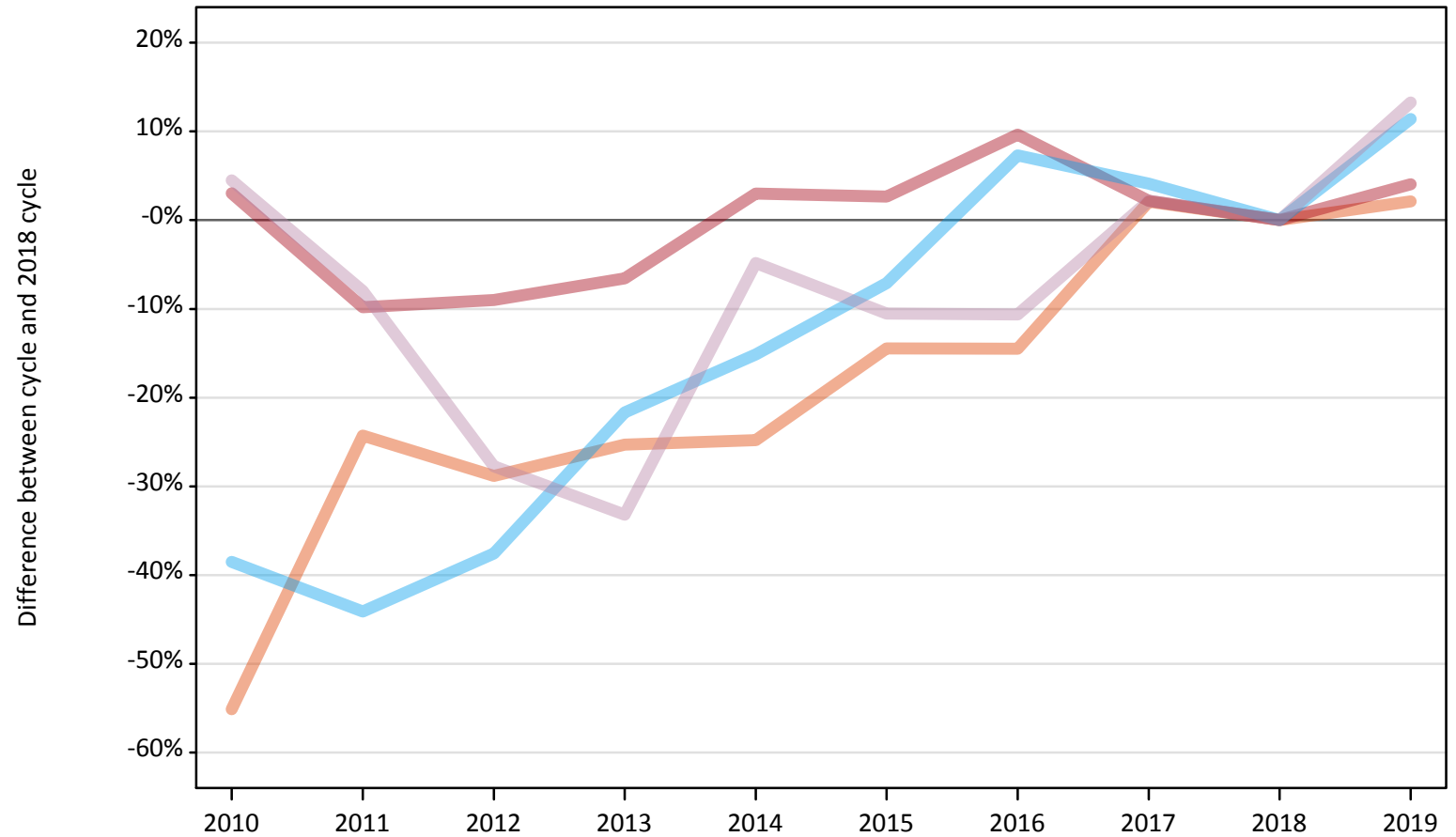
Placed applicants to nursing: difference between cycle and 2018 cycle

Applicant type	Status	2010	2011	2012	2013	2014	2015	2016	2017	2018	2019
All applicants	Placed	-4%	-13%	-14%	-11%	-2%	-1%	5%	1%	0%	4%

Note: The percentage change is not recorded in the above table for groups with fewer than 10 placed applicants in that cycle or in the 2018 cycle.

AB.6 Placed main scheme applicants to nursing from the UK: 28 days after A level results day
All Main scheme placed routes (excluding Adjustment): difference between cycle and 2018 cycle

- Placed (Clearing)
- Placed (Firm)
- Placed (Insurance)
- Placed (Other)



Note: The percentage change is not plotted in the above chart for groups with fewer than 30 placed applicants in any one cycle.

AB.7 Placed main scheme applicants to nursing from the UK: 28 days after A level results day

All Main scheme placed routes (excluding Adjustment): applicants at 28 days after A level results day

Applicant type	Status	2010	2011	2012	2013	2014	2015	2016	2017	2018	2019
Main scheme	Placed (Clearing)	870	1,460	1,380	1,440	1,450	1,650	1,650	1,970	1,930	1,970
	Placed (Firm)	22,650	19,830	20,000	20,540	22,640	22,570	24,110	22,470	21,990	22,870
	Placed (Insurance)	330	300	330	420	450	500	570	560	540	600
	Placed (Other)	1,190	1,050	820	760	1,080	1,020	1,020	1,160	1,140	1,290

AB.8 Placed main scheme applicants to nursing from the UK: 28 days after A level results day

All Main scheme placed routes (excluding Adjustment): difference between cycle and 2018 cycle

Applicant type	Status	2010	2011	2012	2013	2014	2015	2016	2017	2018	2019
Main scheme	Placed (Clearing)	-55%	-24%	-29%	-25%	-25%	-14%	-14%	2%	0%	2%
	Placed (Firm)	3%	-10%	-9%	-7%	3%	3%	10%	2%	0%	4%
	Placed (Insurance)	-39%	-44%	-38%	-22%	-15%	-7%	7%	4%	0%	11%
	Placed (Other)	4%	-8%	-28%	-33%	-5%	-11%	-11%	2%	0%	13%

Note: The percentage change is not recorded in the above table for groups with fewer than 10 placed applicants in that cycle or in the 2018 cycle.

AB.9 Main scheme applicants placed to nursing through adjustment: 28 days after A level results day

Placed through adjustment: difference between cycle and 2018 cycle

[This chart is not part of this report]

AB.10 Main scheme applicants placed to nursing through adjustment: 28 days after A level results day

Placed through adjustment: applicants at 28 days after A level results day

Applicant type	Status	2010	2011	2012	2013	2014	2015	2016	2017	2018	2019
Main scheme	Placed (Adjustment)	0	0	0	10	10	10	0	20	10	10

AB.11 Main scheme applicants placed to nursing through adjustment: 28 days after A level results day

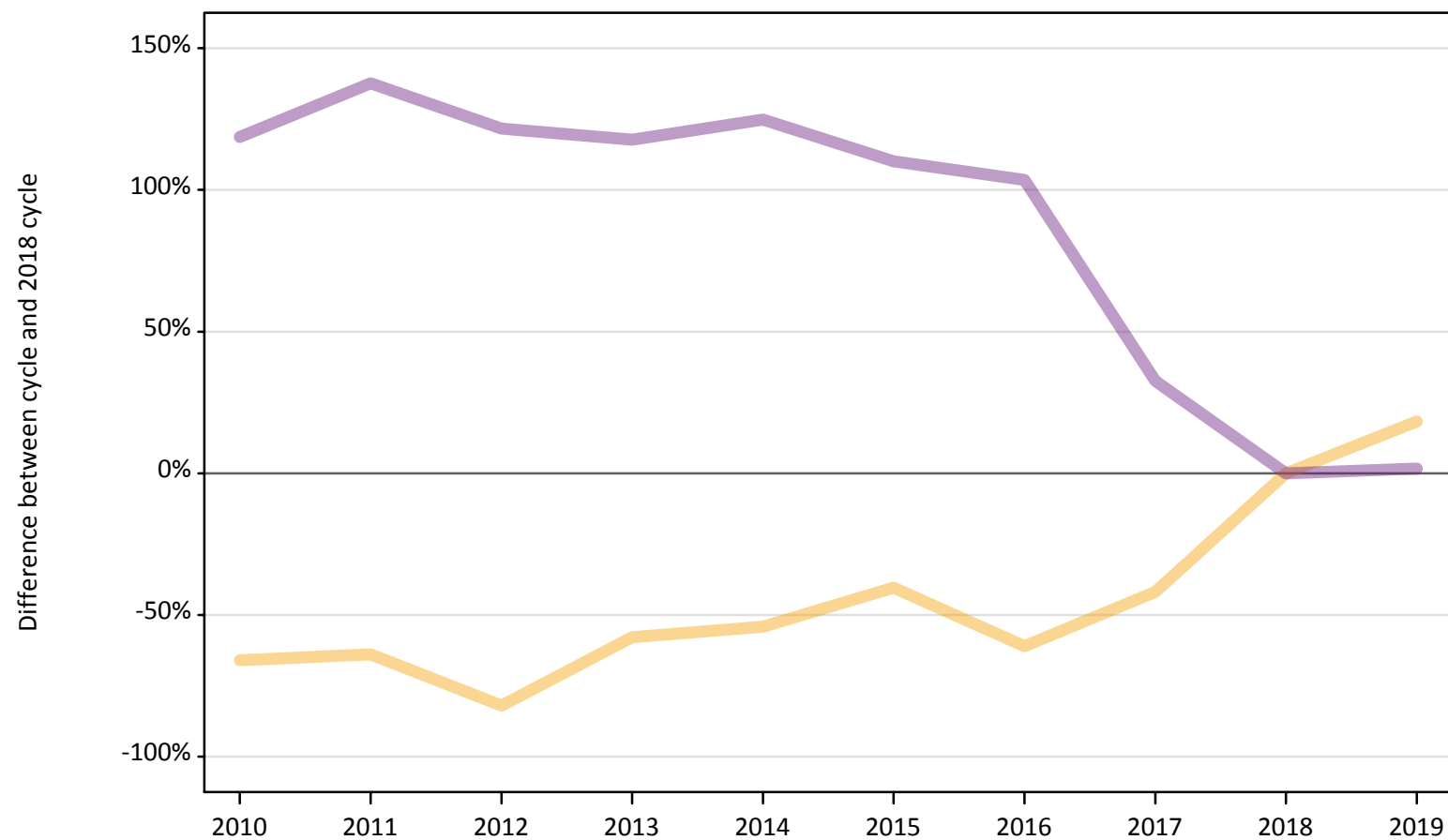
Placed through adjustment: difference between cycle and 2018 cycle

[This table is not part of this report]

AB.12 Main scheme applicants to nursing not currently placed from the UK: 28 days after A level results day

Applicants in unplaced states: difference between cycle and 2018 cycle

— Holding offer
— Free to be placed in Clearing



Note: The percentage change is not plotted in the above chart for groups with fewer than 30 unplaced applicants in any one cycle.

AB.13 Main scheme applicants to nursing not currently placed from the UK: 28 days after A level results day

Applicants in unplaced states: applicants at 28 days after A level results day

Applicant type	Status	2010	2011	2012	2013	2014	2015	2016	2017	2018	2019
Main scheme	Holding offer	550	590	290	680	740	970	630	940	1,620	1,920
	Free to be placed in Clearing	28,860	31,360	29,260	28,740	29,670	27,730	26,870	17,500	13,200	13,420

AB.14 Main scheme applicants to nursing not currently placed from the UK: 28 days after A level results day

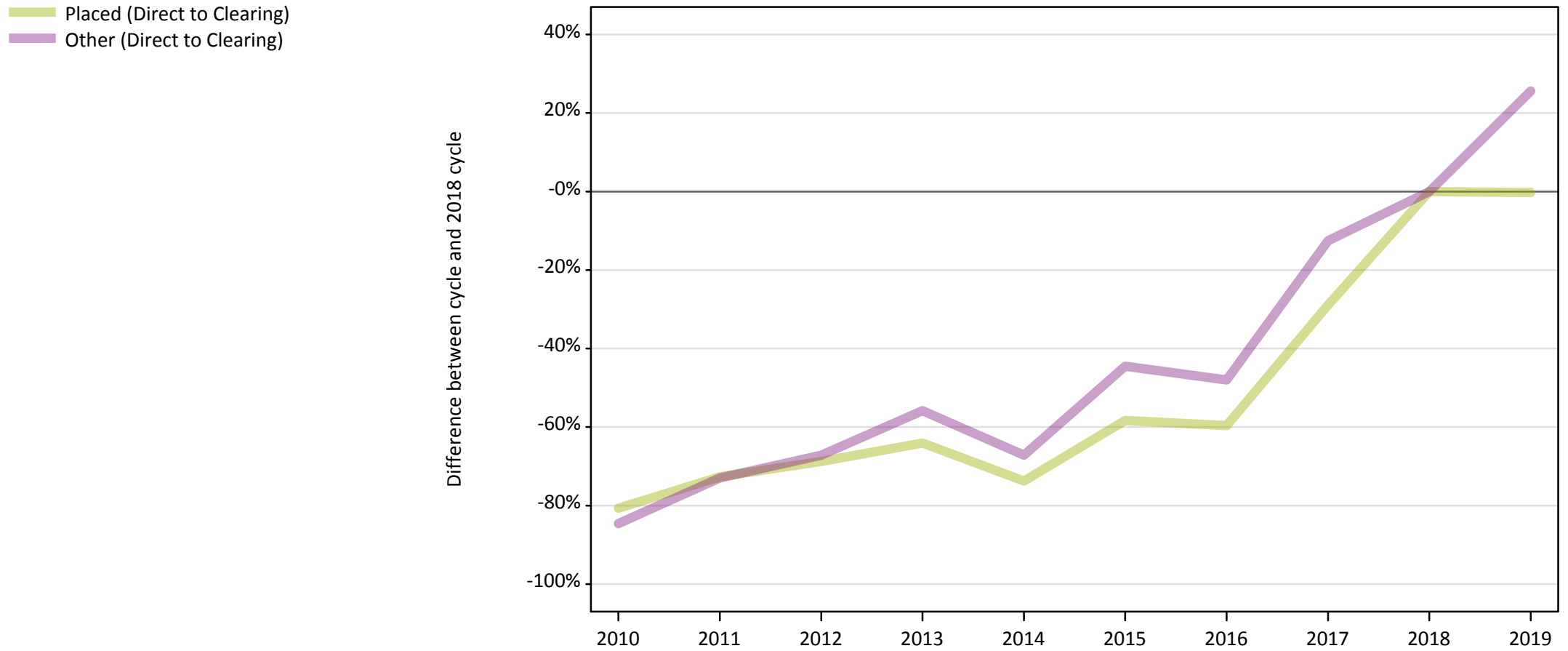
Applicants in unplaced states: difference between cycle and 2018 cycle

Applicant type	Status	2010	2011	2012	2013	2014	2015	2016	2017	2018	2019
Main scheme	Holding offer	-66%	-64%	-82%	-58%	-54%	-40%	-61%	-42%	0%	18%
	Free to be placed in Clearing	119%	138%	122%	118%	125%	110%	104%	33%	0%	2%

Note: The percentage change is not recorded in the above table for groups with fewer than 10 unplaced applicants in that cycle or in the 2018 cycle.

AB.15 Direct to Clearing applicants from the UK: 28 days after A level results day

Direct to Clearing: difference between cycle and 2018 cycle



Note: The percentage change is not plotted in the above chart for groups with fewer than 30 placed applicants in any one cycle.

AB.16 Direct to Clearing applicants from the UK: 28 days after A level results day

Direct to Clearing 28 days after A level results day

Applicant type	Status	2010	2011	2012	2013	2014	2015	2016	2017	2018	2019
Direct to Clearing	Placed (Direct to Clearing)	150	210	240	280	200	320	310	540	770	760
	Other (Direct to Clearing)	50	90	110	150	110	190	180	300	340	430

AB.17 Direct to Clearing applicants from the UK: 28 days after A level results day

Direct to Clearing: difference between cycle and 2018 cycle

Applicant type	Status	2010	2011	2012	2013	2014	2015	2016	2017	2018	2019
Direct to Clearing	Placed (Direct to Clearing)	-81%	-73%	-69%	-64%	-74%	-58%	-60%	-29%	0%	-0%
	Other (Direct to Clearing)	-85%	-73%	-67%	-56%	-67%	-44%	-48%	-13%	0%	26%

Note: The percentage change is not recorded in the above table for groups with fewer than 10 placed applicants in that cycle or in the 2018 cycle.