

Analysis at 00:05 on Thursday 12 September 2019 (28 days after A level results day)

## S.1 Placed applicants from all domiciles by sex: 28 days after A level results day

Placed applicants: change relative to 2018 cycle totals

Men  
Women



Note: The percentage change is not plotted in the above chart for groups with fewer than 30 placed applicants in any one cycle.

### S.2 Placed applicants from all domiciles by sex: 28 days after A level results day

Applicant Status	Sex	2010	2011	2012	2013	2014	2015	2016	2017	2018	2019
Placed	Men	207,530	213,860	197,600	210,490	215,680	220,060	222,160	218,670	211,990	211,330
	Women	255,290	261,370	247,050	261,390	272,930	284,890	289,830	287,010	283,420	284,290
	All	462,820	475,230	444,640	471,880	488,610	504,950	511,980	505,680	495,410	495,620

### S.3 Placed applicants from all domiciles by sex: 28 days after A level results day

Placed applicants: change relative to 2018 cycle totals

Applicant Status	Sex	2010	2011	2012	2013	2014	2015	2016	2017	2018	2019
Placed	Men	-2%	1%	-7%	-1%	2%	4%	5%	3%	0%	-0%
	Women	-10%	-8%	-13%	-8%	-4%	1%	2%	1%	0%	0%
	All	-7%	-4%	-10%	-5%	-1%	2%	3%	2%	0%	0%

Note: The percentage change is not recorded in the above table for groups with fewer than 10 placed applicants in that cycle or in the 2018 cycle.

### S.4 Placed applicants from all domiciles by sex: 28 days after A level results day

Placed applicants: absolute change relative to 2018 cycle totals

Applicant Status	Sex	2010	2011	2012	2013	2014	2015	2016	2017	2018	2019
Placed	Men	-4,460	1,870	-14,390	-1,490	3,690	8,070	10,170	6,680	0	-650
	Women	-28,130	-22,060	-36,380	-22,040	-10,490	1,470	6,400	3,590	0	870
	All	-32,590	-20,180	-50,770	-23,530	-6,800	9,540	16,570	10,270	0	220

### S.5 Placed applicants from the UK by sex: 28 days after A level results day

Placed applicants: change relative to 2018 cycle totals

Men  
Women



Note: The percentage change is not plotted in the above chart for groups with fewer than 30 placed applicants in any one cycle.

### S.6 Placed applicants from the UK by sex: 28 days after A level results day

Applicant Status	Sex	2010	2011	2012	2013	2014	2015	2016	2017	2018	2019
Placed	Men	181,730	187,630	172,500	184,090	188,240	191,540	192,760	188,870	181,850	179,990
	Women	227,620	231,890	218,410	230,820	239,880	249,230	253,180	250,110	244,880	244,570
	All	409,350	419,520	390,910	414,920	428,120	440,770	445,940	438,980	426,730	424,550

### S.7 Placed applicants from the UK by sex: 28 days after A level results day

Placed applicants: change relative to 2018 cycle totals

Applicant Status	Sex	2010	2011	2012	2013	2014	2015	2016	2017	2018	2019
Placed	Men	-0%	3%	-5%	1%	4%	5%	6%	4%	0%	-1%
	Women	-7%	-5%	-11%	-6%	-2%	2%	3%	2%	0%	-0%
	All	-4%	-2%	-8%	-3%	0%	3%	5%	3%	0%	-1%

Note: The percentage change is not recorded in the above table for groups with fewer than 10 placed applicants in that cycle or in the 2018 cycle.

### S.8 Placed applicants from the UK by sex: 28 days after A level results day

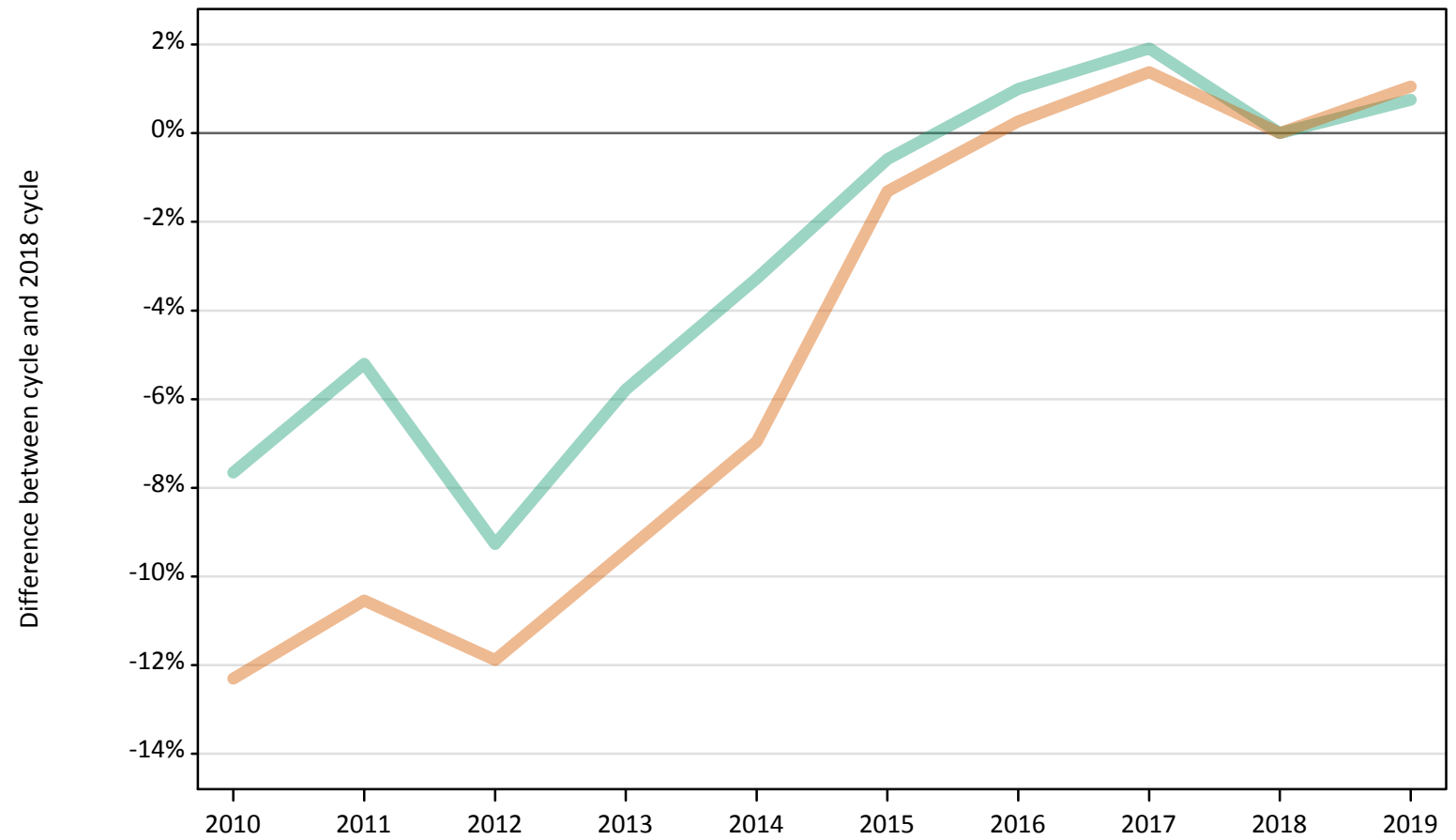
Placed applicants: absolute change relative to 2018 cycle totals

Applicant Status	Sex	2010	2011	2012	2013	2014	2015	2016	2017	2018	2019
Placed	Men	-120	5,780	-9,350	2,250	6,400	9,690	10,910	7,020	0	-1,860
	Women	-17,260	-12,980	-26,470	-14,050	-5,000	4,360	8,300	5,240	0	-310
	All	-17,380	-7,200	-35,820	-11,810	1,400	14,040	19,210	12,260	0	-2,170

### S.9 Placed 18 year old applicants from the UK by sex: 28 days after A level results day

Placed 18 year old applicants: change relative to 2018 cycle totals

Men  
Women



Note: The percentage change is not plotted in the above chart for groups with fewer than 30 placed applicants in any one cycle.

### S.10 Placed 18 year old applicants from the UK by sex: 28 days after A level results day

Applicant Status	Sex	2010	2011	2012	2013	2014	2015	2016	2017	2018	2019
Placed	Men	95,270	97,810	93,610	97,200	99,790	102,570	104,200	105,150	103,170	103,960
	Women	117,590	119,950	118,150	121,440	124,760	132,330	134,450	135,940	134,090	135,500
	All	212,870	217,760	211,760	218,650	224,560	234,900	238,650	241,090	237,270	239,460

### S.11 Placed 18 year old applicants from the UK by sex: 28 days after A level results day

Placed 18 year old applicants: change relative to 2018 cycle totals

Applicant Status	Sex	2010	2011	2012	2013	2014	2015	2016	2017	2018	2019
Placed	Men	-8%	-5%	-9%	-6%	-3%	-1%	1%	2%	0%	1%
	Women	-12%	-11%	-12%	-9%	-7%	-1%	0%	1%	0%	1%
	All	-10%	-8%	-11%	-8%	-5%	-1%	1%	2%	0%	1%

Note: The percentage change is not recorded in the above table for groups with fewer than 10 placed applicants in that cycle or in the 2018 cycle.

### S.12 Placed 18 year old applicants from the UK by sex: 28 days after A level results day

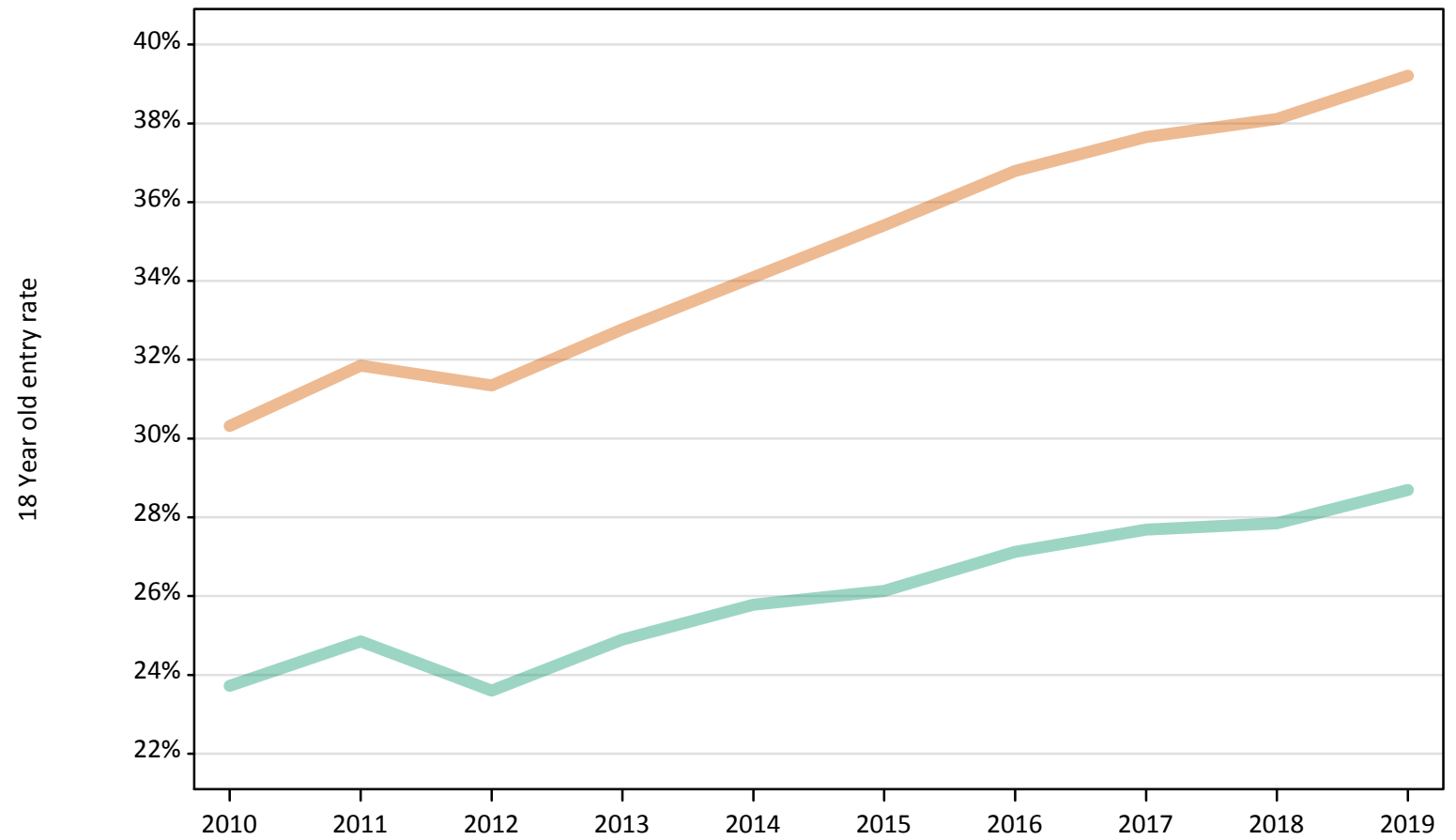
Placed 18 year old applicants: absolute change relative to 2018 cycle totals

Applicant Status	Sex	2010	2011	2012	2013	2014	2015	2016	2017	2018	2019
Placed	Men	-7,900	-5,370	-9,570	-5,970	-3,380	-610	1,030	1,980	0	780
	Women	-16,500	-14,140	-15,940	-12,650	-9,330	-1,760	350	1,850	0	1,410
	All	-24,400	-19,510	-25,510	-18,620	-12,710	-2,370	1,380	3,830	0	2,190

### S.13 Placed 18 year old applicants from the UK by sex: 28 days after A level results day

Placed 18 year old applicants: entry rate

Men  
Women



### S.14 Placed 18 year old applicants from the UK by sex: 28 days after A level results day

Placed 18 year old applicants: entry rate

Applicant Status	Sex	2010	2011	2012	2013	2014	2015	2016	2017	2018	2019
Placed	Men	23.7%	24.9%	23.6%	24.9%	25.8%	26.1%	27.1%	27.7%	27.8%	28.7%
	Women	30.3%	31.9%	31.3%	32.8%	34.1%	35.4%	36.8%	37.7%	38.1%	39.2%
	All	27.0%	28.3%	27.4%	28.7%	29.8%	30.7%	31.8%	32.5%	32.8%	33.8%

### S.15 Placed 18 year old applicants from the UK by sex: 28 days after A level results day

Placed 18 year old applicants: entry rate (indexed to 100 = Men)

Applicant Status	Sex	2010	2011	2012	2013	2014	2015	2016	2017	2018	2019
Placed	Men	100	100	100	100	100	100	100	100	100	100
	Women	128	128	133	132	132	135	136	136	137	137



### S.16 Placed applicants from England by sex: 28 days after A level results day

Placed applicants: change relative to 2018 cycle totals

Men  
Women



Note: The percentage change is not plotted in the above chart for groups with fewer than 30 placed applicants in any one cycle.

### S.17 Placed applicants from England by sex: 28 days after A level results day

Applicant Status	Sex	2010	2011	2012	2013	2014	2015	2016	2017	2018	2019
Placed	Men	155,410	161,530	146,420	157,090	161,060	163,910	164,280	161,160	154,350	153,620
	Women	193,340	197,890	184,160	195,710	203,560	210,530	213,200	209,500	204,370	204,590
	All	348,750	359,420	330,580	352,810	364,620	374,440	377,480	370,650	358,730	358,200

### S.18 Placed applicants from England by sex: 28 days after A level results day

Placed applicants: change relative to 2018 cycle totals

Applicant Status	Sex	2010	2011	2012	2013	2014	2015	2016	2017	2018	2019
Placed	Men	1%	5%	-5%	2%	4%	6%	6%	4%	0%	-0%
	Women	-5%	-3%	-10%	-4%	-0%	3%	4%	3%	0%	0%
	All	-3%	0%	-8%	-2%	2%	4%	5%	3%	0%	-0%

Note: The percentage change is not recorded in the above table for groups with fewer than 10 placed applicants in that cycle or in the 2018 cycle.

### S.19 Placed applicants from England by sex: 28 days after A level results day

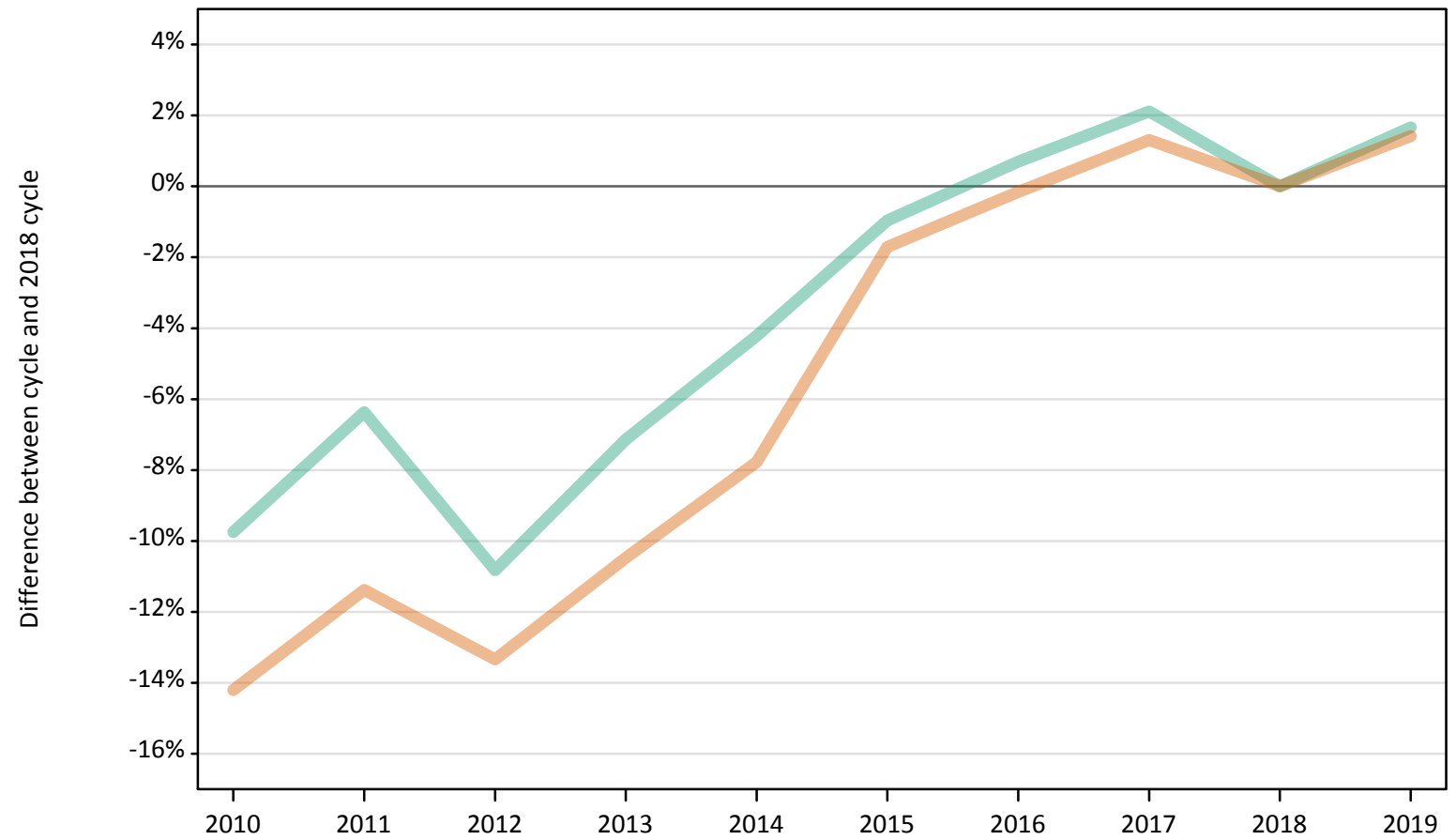
Placed applicants: absolute change relative to 2018 cycle totals

Applicant Status	Sex	2010	2011	2012	2013	2014	2015	2016	2017	2018	2019
Placed	Men	1,060	7,180	-7,930	2,740	6,710	9,560	9,930	6,810	0	-740
	Women	-11,030	-6,480	-20,220	-8,660	-810	6,160	8,830	5,120	0	210
	All	-9,970	700	-28,150	-5,920	5,900	15,720	18,760	11,930	0	-530

## S.20 Placed 18 year old applicants from England by sex: 28 days after A level results day

Placed 18 year old applicants: change relative to 2018 cycle totals

Men  
Women



Note: The percentage change is not plotted in the above chart for groups with fewer than 30 placed applicants in any one cycle.

### S.21 Placed 18 year old applicants from England by sex: 28 days after A level results day

Applicant Status	Sex	2010	2011	2012	2013	2014	2015	2016	2017	2018	2019
Placed	Men	80,700	83,720	79,730	83,030	85,650	88,550	90,040	91,300	89,410	90,900
	Women	98,590	101,840	99,580	102,880	105,980	112,950	114,740	116,420	114,920	116,550
	All	179,290	185,560	179,320	185,910	191,630	201,510	204,780	207,720	204,330	207,450

### S.22 Placed 18 year old applicants from England by sex: 28 days after A level results day

Placed 18 year old applicants: change relative to 2018 cycle totals

Applicant Status	Sex	2010	2011	2012	2013	2014	2015	2016	2017	2018	2019
Placed	Men	-10%	-6%	-11%	-7%	-4%	-1%	1%	2%	0%	2%
	Women	-14%	-11%	-13%	-10%	-8%	-2%	-0%	1%	0%	1%
	All	-12%	-9%	-12%	-9%	-6%	-1%	0%	2%	0%	2%

Note: The percentage change is not recorded in the above table for groups with fewer than 10 placed applicants in that cycle or in the 2018 cycle.

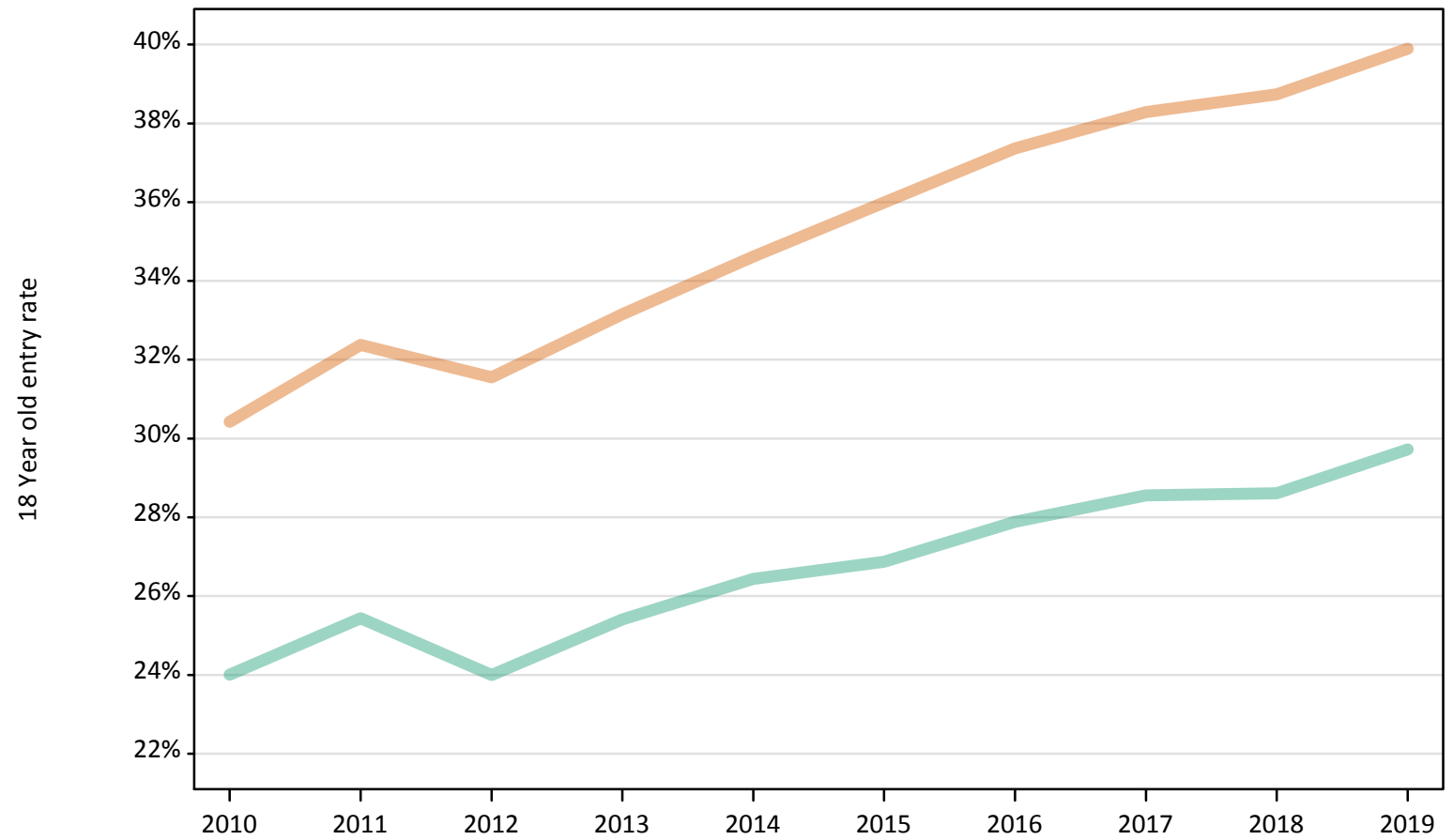
### S.23 Placed 18 year old applicants from England by sex: 28 days after A level results day

Placed 18 year old applicants: absolute change relative to 2018 cycle totals

Applicant Status	Sex	2010	2011	2012	2013	2014	2015	2016	2017	2018	2019
Placed	Men	-8,720	-5,690	-9,680	-6,380	-3,770	-860	620	1,890	0	1,490
	Women	-16,320	-13,080	-15,330	-12,040	-8,940	-1,960	-180	1,510	0	1,630
	All	-25,040	-18,770	-25,010	-18,420	-12,700	-2,820	450	3,390	0	3,120

**S.24 Placed 18 year old applicants from England by sex: 28 days after A level results day**  
Placed 18 year old applicants: entry rate

Men  
Women



### S.25 Placed 18 year old applicants from England by sex: 28 days after A level results day

Placed 18 year old applicants: entry rate

Applicant Status	Sex	2010	2011	2012	2013	2014	2015	2016	2017	2018	2019
Placed	Men	24.0%	25.4%	24.0%	25.4%	26.4%	26.9%	27.9%	28.6%	28.6%	29.7%
	Women	30.4%	32.4%	31.6%	33.2%	34.6%	36.0%	37.4%	38.3%	38.7%	39.9%
	All	27.2%	28.8%	27.7%	29.2%	30.4%	31.3%	32.5%	33.3%	33.5%	34.7%

### S.26 Placed 18 year old applicants from England by sex: 28 days after A level results day

Placed 18 year old applicants: entry rate (indexed to 100 = Men)

Applicant Status	Sex	2010	2011	2012	2013	2014	2015	2016	2017	2018	2019
Placed	Men	100	100	100	100	100	100	100	100	100	100
	Women	127	127	131	130	131	134	134	134	135	134

**S.27 Placed applicants from Northern Ireland by sex: 28 days after A level results day**  
Placed applicants: change relative to 2018 cycle totals

Men  
Women



Note: The percentage change is not plotted in the above chart for groups with fewer than 30 placed applicants in any one cycle.

### S.28 Placed applicants from Northern Ireland by sex: 28 days after A level results day

Applicant Status	Sex	2010	2011	2012	2013	2014	2015	2016	2017	2018	2019
Placed	Men	6,110	6,320	6,010	6,630	6,600	6,280	6,590	6,210	6,120	5,860
	Women	7,420	7,490	7,280	7,890	7,830	7,830	8,280	8,190	7,950	7,990
	All	13,540	13,810	13,290	14,520	14,430	14,110	14,860	14,400	14,070	13,850

### S.29 Placed applicants from Northern Ireland by sex: 28 days after A level results day

Placed applicants: change relative to 2018 cycle totals

Applicant Status	Sex	2010	2011	2012	2013	2014	2015	2016	2017	2018	2019
Placed	Men	-0%	3%	-2%	8%	8%	3%	8%	2%	0%	-4%
	Women	-7%	-6%	-8%	-1%	-2%	-2%	4%	3%	0%	0%
	All	-4%	-2%	-6%	3%	3%	0%	6%	2%	0%	-2%

Note: The percentage change is not recorded in the above table for groups with fewer than 10 placed applicants in that cycle or in the 2018 cycle.

### S.30 Placed applicants from Northern Ireland by sex: 28 days after A level results day

Placed applicants: absolute change relative to 2018 cycle totals

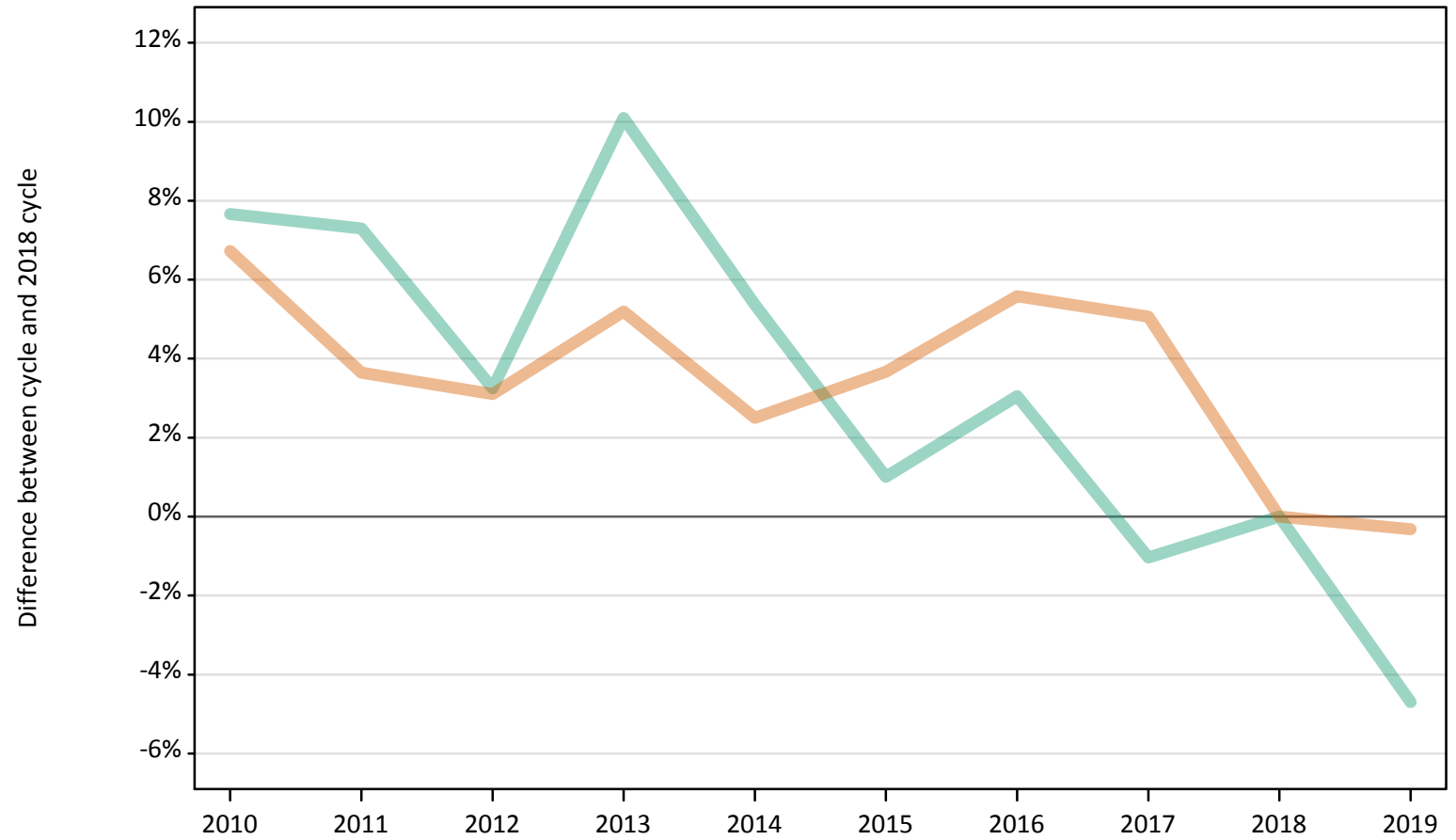
Applicant Status	Sex	2010	2011	2012	2013	2014	2015	2016	2017	2018	2019
Placed	Men	0	210	-110	510	480	160	470	90	0	-260
	Women	-530	-470	-670	-70	-120	-130	320	230	0	40
	All	-540	-260	-780	450	360	40	790	330	0	-220



### S.31 Placed 18 year old applicants from Northern Ireland by sex: 28 days after A level results day

Placed 18 year old applicants: change relative to 2018 cycle totals

Men  
Women



Note: The percentage change is not plotted in the above chart for groups with fewer than 30 placed applicants in any one cycle.

### S.32 Placed 18 year old applicants from Northern Ireland by sex: 28 days after A level results day

Applicant Status	Sex	2010	2011	2012	2013	2014	2015	2016	2017	2018	2019
Placed	Men	3,850	3,840	3,690	3,940	3,770	3,610	3,680	3,540	3,580	3,410
	Women	4,950	4,810	4,780	4,880	4,750	4,810	4,900	4,870	4,640	4,620
	All	8,800	8,640	8,470	8,820	8,520	8,420	8,580	8,410	8,210	8,030

### S.33 Placed 18 year old applicants from Northern Ireland by sex: 28 days after A level results day

Placed 18 year old applicants: change relative to 2018 cycle totals

Applicant Status	Sex	2010	2011	2012	2013	2014	2015	2016	2017	2018	2019
Placed	Men	8%	7%	3%	10%	5%	1%	3%	-1%	0%	-5%
	Women	7%	4%	3%	5%	3%	4%	6%	5%	0%	-0%
	All	7%	5%	3%	7%	4%	3%	4%	2%	0%	-2%

Note: The percentage change is not recorded in the above table for groups with fewer than 10 placed applicants in that cycle or in the 2018 cycle.

### S.34 Placed 18 year old applicants from Northern Ireland by sex: 28 days after A level results day

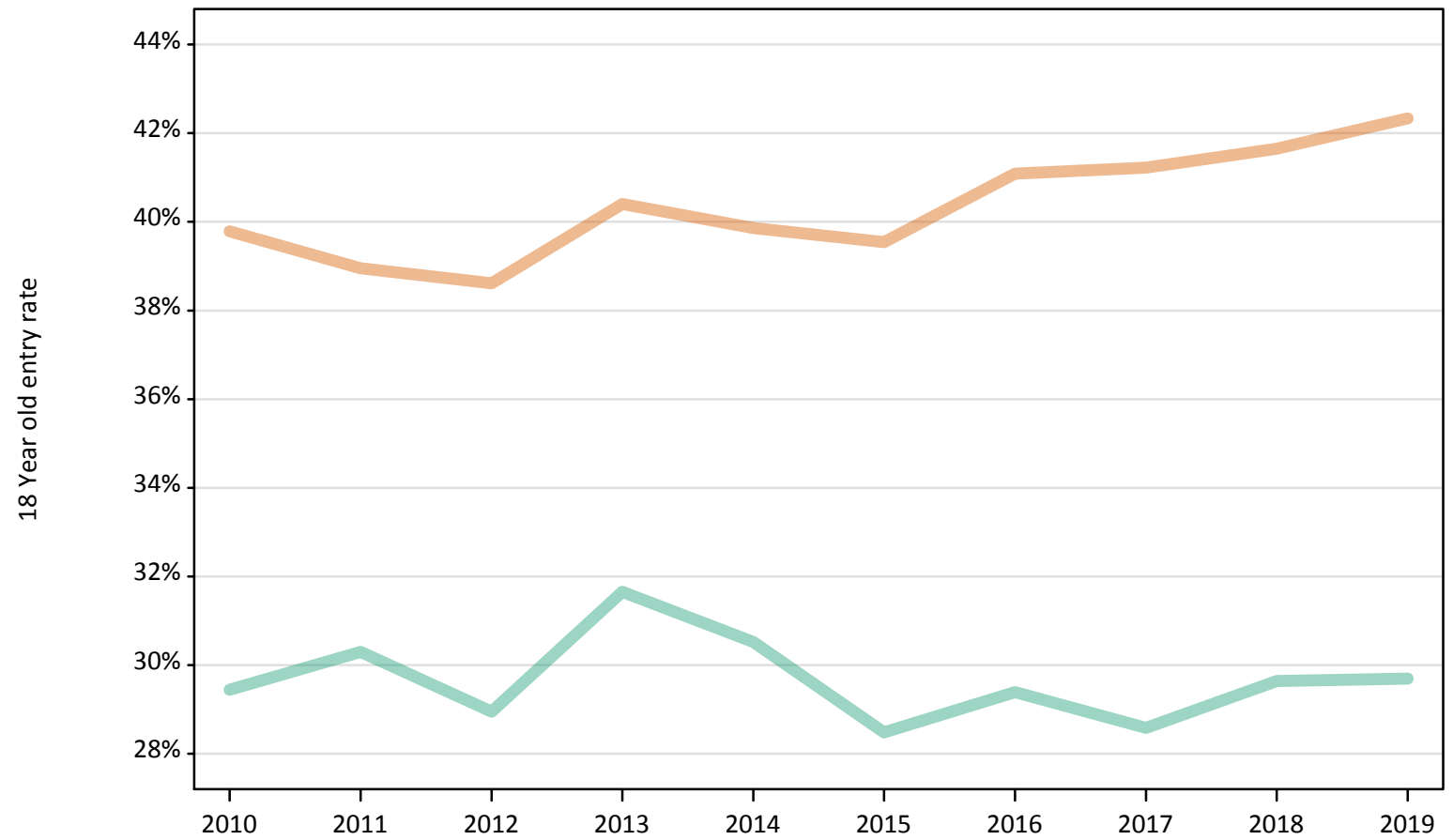
Placed 18 year old applicants: absolute change relative to 2018 cycle totals

Applicant Status	Sex	2010	2011	2012	2013	2014	2015	2016	2017	2018	2019
Placed	Men	270	260	120	360	190	40	110	-40	0	-170
	Women	310	170	140	240	120	170	260	240	0	-20
	All	590	430	260	600	310	210	370	200	0	-180

### S.35 Placed 18 year old applicants from Northern Ireland by sex: 28 days after A level results day

Placed 18 year old applicants: entry rate

Men  
Women



**S.36 Placed 18 year old applicants from Northern Ireland by sex: 28 days after A level results day**

Placed 18 year old applicants: entry rate

Applicant Status	Sex	2010	2011	2012	2013	2014	2015	2016	2017	2018	2019
Placed	Men	29.4%	30.3%	28.9%	31.7%	30.5%	28.5%	29.4%	28.6%	29.6%	29.7%
	Women	39.8%	38.9%	38.6%	40.4%	39.9%	39.5%	41.1%	41.2%	41.7%	42.3%
	All	34.5%	34.6%	33.7%	36.0%	35.1%	33.9%	35.1%	34.8%	35.4%	35.9%

**S.37 Placed 18 year old applicants from Northern Ireland by sex: 28 days after A level results day**

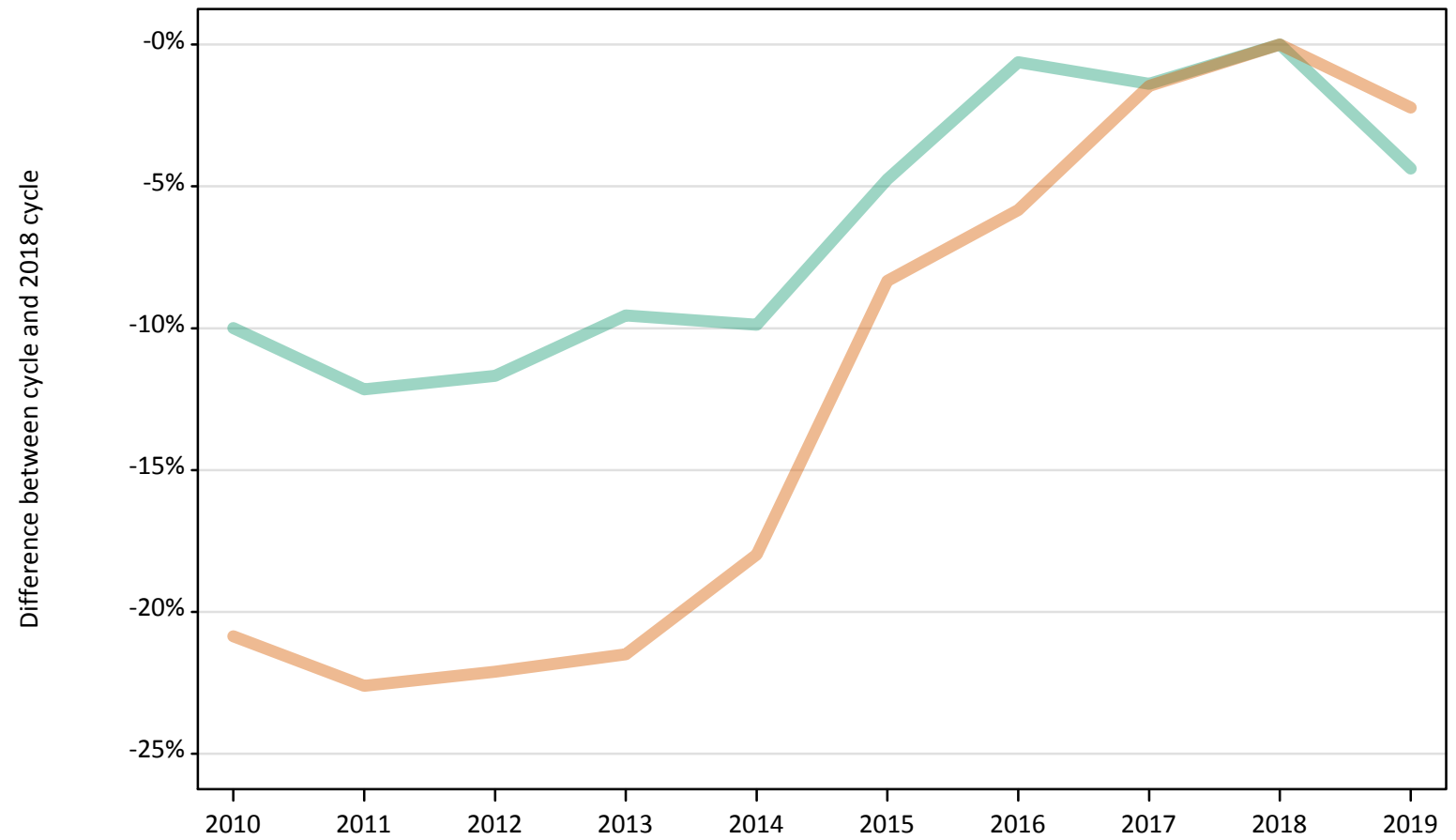
Placed 18 year old applicants: entry rate (indexed to 100 = Men)

Applicant Status	Sex	2010	2011	2012	2013	2014	2015	2016	2017	2018	2019
Placed	Men	100	100	100	100	100	100	100	100	100	100
	Women	135	129	133	128	131	139	140	144	141	143

### S.38 Placed applicants from Scotland by sex: 28 days after A level results day

Placed applicants: change relative to 2018 cycle totals

Men  
Women



Note: The percentage change is not plotted in the above chart for groups with fewer than 30 placed applicants in any one cycle.

### S.39 Placed applicants from Scotland by sex: 28 days after A level results day

Applicant Status	Sex	2010	2011	2012	2013	2014	2015	2016	2017	2018	2019
Placed	Men	12,450	12,150	12,220	12,510	12,470	13,180	13,750	13,640	13,830	13,230
	Women	16,820	16,450	16,550	16,680	17,430	19,480	20,010	20,940	21,250	20,780
	All	29,270	28,600	28,770	29,200	29,900	32,660	33,760	34,580	35,080	34,010

### S.40 Placed applicants from Scotland by sex: 28 days after A level results day

Placed applicants: change relative to 2018 cycle totals

Applicant Status	Sex	2010	2011	2012	2013	2014	2015	2016	2017	2018	2019
Placed	Men	-10%	-12%	-12%	-10%	-10%	-5%	-1%	-1%	0%	-4%
	Women	-21%	-23%	-22%	-21%	-18%	-8%	-6%	-1%	0%	-2%
	All	-17%	-18%	-18%	-17%	-15%	-7%	-4%	-1%	0%	-3%

Note: The percentage change is not recorded in the above table for groups with fewer than 10 placed applicants in that cycle or in the 2018 cycle.

### S.41 Placed applicants from Scotland by sex: 28 days after A level results day

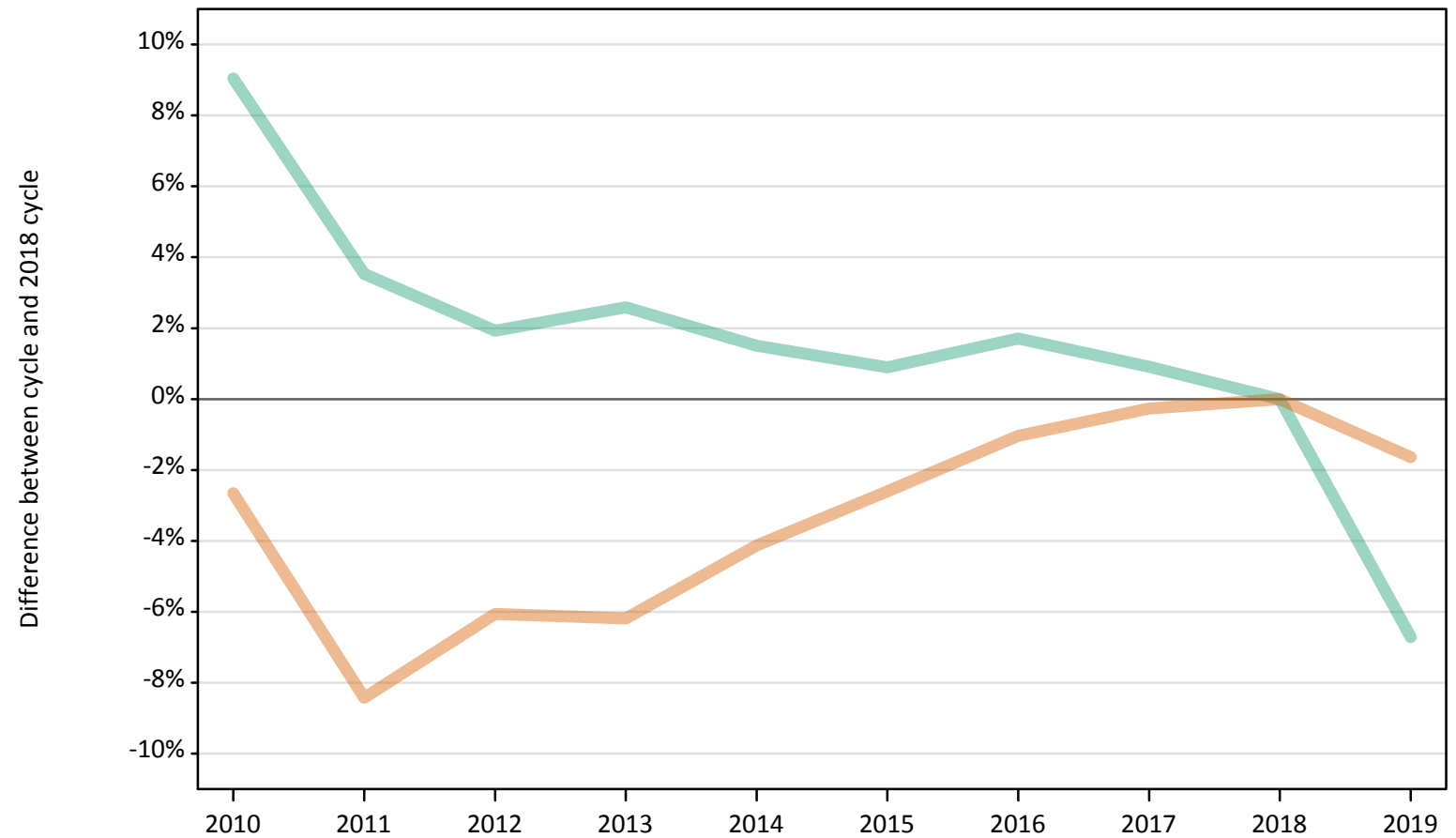
Placed applicants: absolute change relative to 2018 cycle totals

Applicant Status	Sex	2010	2011	2012	2013	2014	2015	2016	2017	2018	2019
Placed	Men	-1,380	-1,680	-1,620	-1,320	-1,370	-660	-90	-190	0	-610
	Women	-4,430	-4,810	-4,700	-4,570	-3,820	-1,770	-1,240	-310	0	-470
	All	-5,810	-6,490	-6,310	-5,890	-5,190	-2,430	-1,330	-500	0	-1,080

### S.42 Placed 18 year old applicants from Scotland by sex: 28 days after A level results day

Placed 18 year old applicants: change relative to 2018 cycle totals

Men  
Women



Note: The percentage change is not plotted in the above chart for groups with fewer than 30 placed applicants in any one cycle.

### S.43 Placed 18 year old applicants from Scotland by sex: 28 days after A level results day

Applicant Status	Sex	2010	2011	2012	2013	2014	2015	2016	2017	2018	2019
Placed	Men	6,450	6,130	6,030	6,070	6,010	5,970	6,020	5,970	5,920	5,520
	Women	8,430	7,930	8,140	8,130	8,310	8,440	8,570	8,640	8,660	8,520
	All	14,890	14,060	14,170	14,200	14,310	14,410	14,590	14,610	14,580	14,040

### S.44 Placed 18 year old applicants from Scotland by sex: 28 days after A level results day

Placed 18 year old applicants: change relative to 2018 cycle totals

Applicant Status	Sex	2010	2011	2012	2013	2014	2015	2016	2017	2018	2019
Placed	Men	9%	4%	2%	3%	2%	1%	2%	1%	0%	-7%
	Women	-3%	-8%	-6%	-6%	-4%	-3%	-1%	-0%	0%	-2%
	All	2%	-4%	-3%	-3%	-2%	-1%	0%	0%	0%	-4%

Note: The percentage change is not recorded in the above table for groups with fewer than 10 placed applicants in that cycle or in the 2018 cycle.

### S.45 Placed 18 year old applicants from Scotland by sex: 28 days after A level results day

Placed 18 year old applicants: absolute change relative to 2018 cycle totals

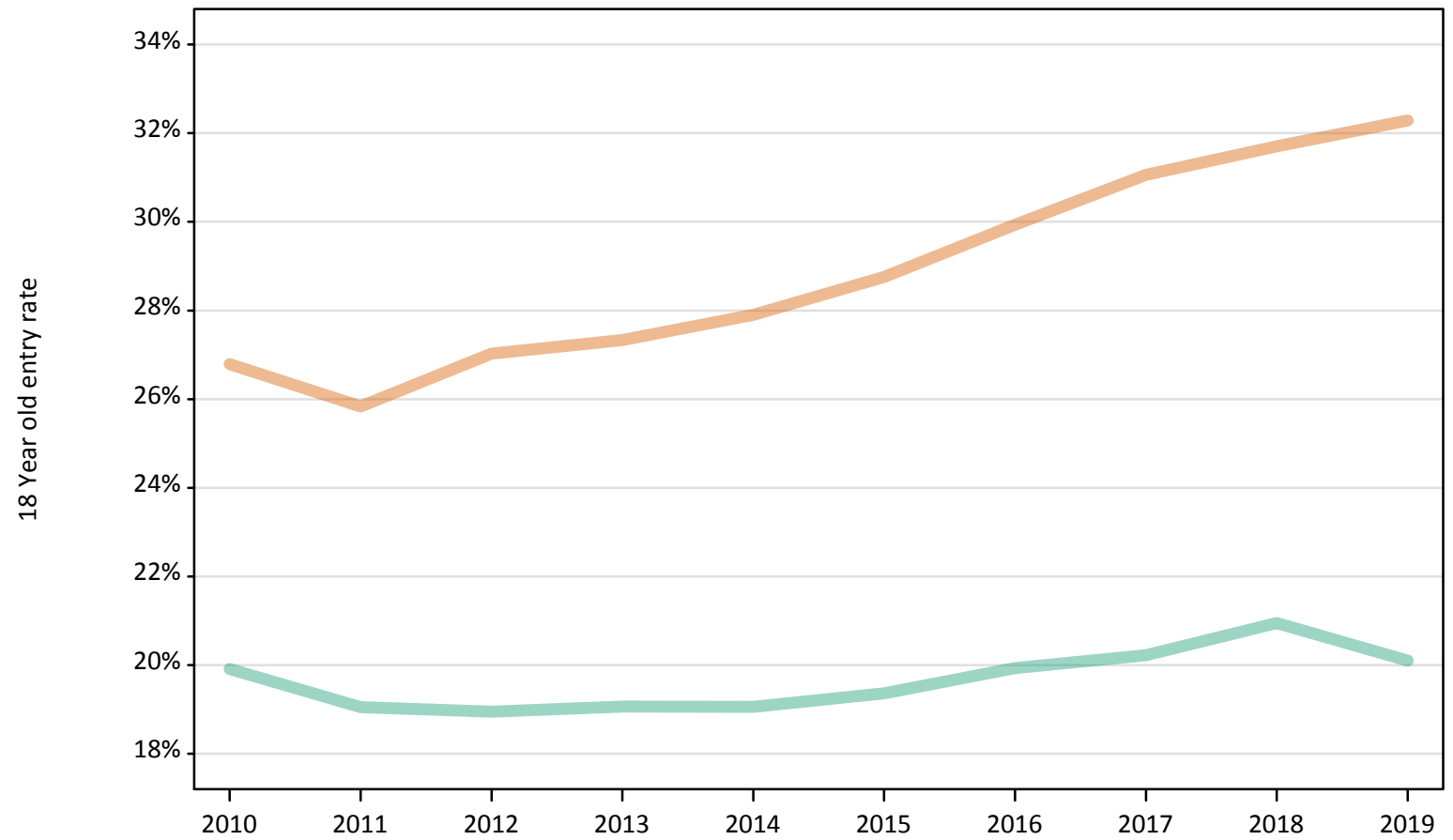
Applicant Status	Sex	2010	2011	2012	2013	2014	2015	2016	2017	2018	2019
Placed	Men	540	210	110	150	90	50	100	50	0	-400
	Women	-230	-730	-530	-540	-360	-230	-90	-20	0	-140
	All	310	-520	-410	-380	-270	-170	10	30	0	-540



### S.46 Placed 18 year old applicants from Scotland by sex: 28 days after A level results day

Placed 18 year old applicants: entry rate

Men  
Women



**S.47 Placed 18 year old applicants from Scotland by sex: 28 days after A level results day**

Placed 18 year old applicants: entry rate

Applicant Status	Sex	2010	2011	2012	2013	2014	2015	2016	2017	2018	2019
Placed	Men	19.9%	19.1%	18.9%	19.1%	19.1%	19.4%	19.9%	20.2%	20.9%	20.1%
	Women	26.8%	25.8%	27.0%	27.3%	27.9%	28.8%	29.9%	31.1%	31.7%	32.3%
	All	23.3%	22.4%	22.9%	23.1%	23.4%	23.9%	24.8%	25.5%	26.2%	26.1%

**S.48 Placed 18 year old applicants from Scotland by sex: 28 days after A level results day**

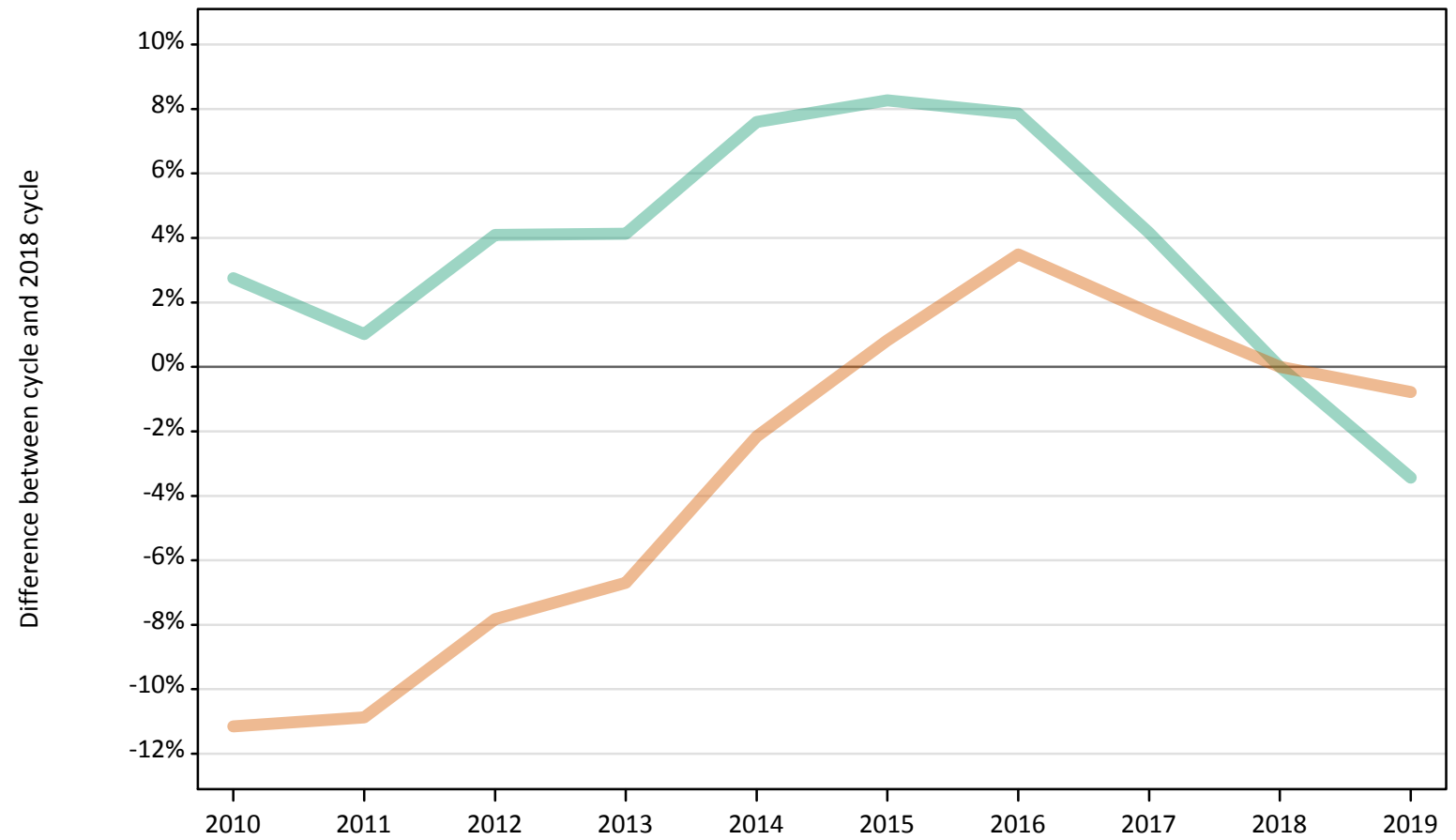
Placed 18 year old applicants: entry rate (indexed to 100 = Men)

Applicant Status	Sex	2010	2011	2012	2013	2014	2015	2016	2017	2018	2019
Placed	Men	100	100	100	100	100	100	100	100	100	100
	Women	135	136	143	143	146	149	150	154	151	161

### S.49 Placed applicants from Wales by sex: 28 days after A level results day

Placed applicants: change relative to 2018 cycle totals

Men  
Women



Note: The percentage change is not plotted in the above chart for groups with fewer than 30 placed applicants in any one cycle.

### S.50 Placed applicants from Wales by sex: 28 days after A level results day

Applicant Status	Sex	2010	2011	2012	2013	2014	2015	2016	2017	2018	2019
Placed	Men	7,750	7,620	7,860	7,860	8,120	8,170	8,140	7,860	7,550	7,290
	Women	10,040	10,070	10,420	10,540	11,060	11,390	11,690	11,490	11,300	11,210
	All	17,790	17,690	18,270	18,400	19,180	19,560	19,830	19,350	18,850	18,500

### S.51 Placed applicants from Wales by sex: 28 days after A level results day

Placed applicants: change relative to 2018 cycle totals

Applicant Status	Sex	2010	2011	2012	2013	2014	2015	2016	2017	2018	2019
Placed	Men	3%	1%	4%	4%	8%	8%	8%	4%	0%	-3%
	Women	-11%	-11%	-8%	-7%	-2%	1%	3%	2%	0%	-1%
	All	-6%	-6%	-3%	-2%	2%	4%	5%	3%	0%	-2%

Note: The percentage change is not recorded in the above table for groups with fewer than 10 placed applicants in that cycle or in the 2018 cycle.

### S.52 Placed applicants from Wales by sex: 28 days after A level results day

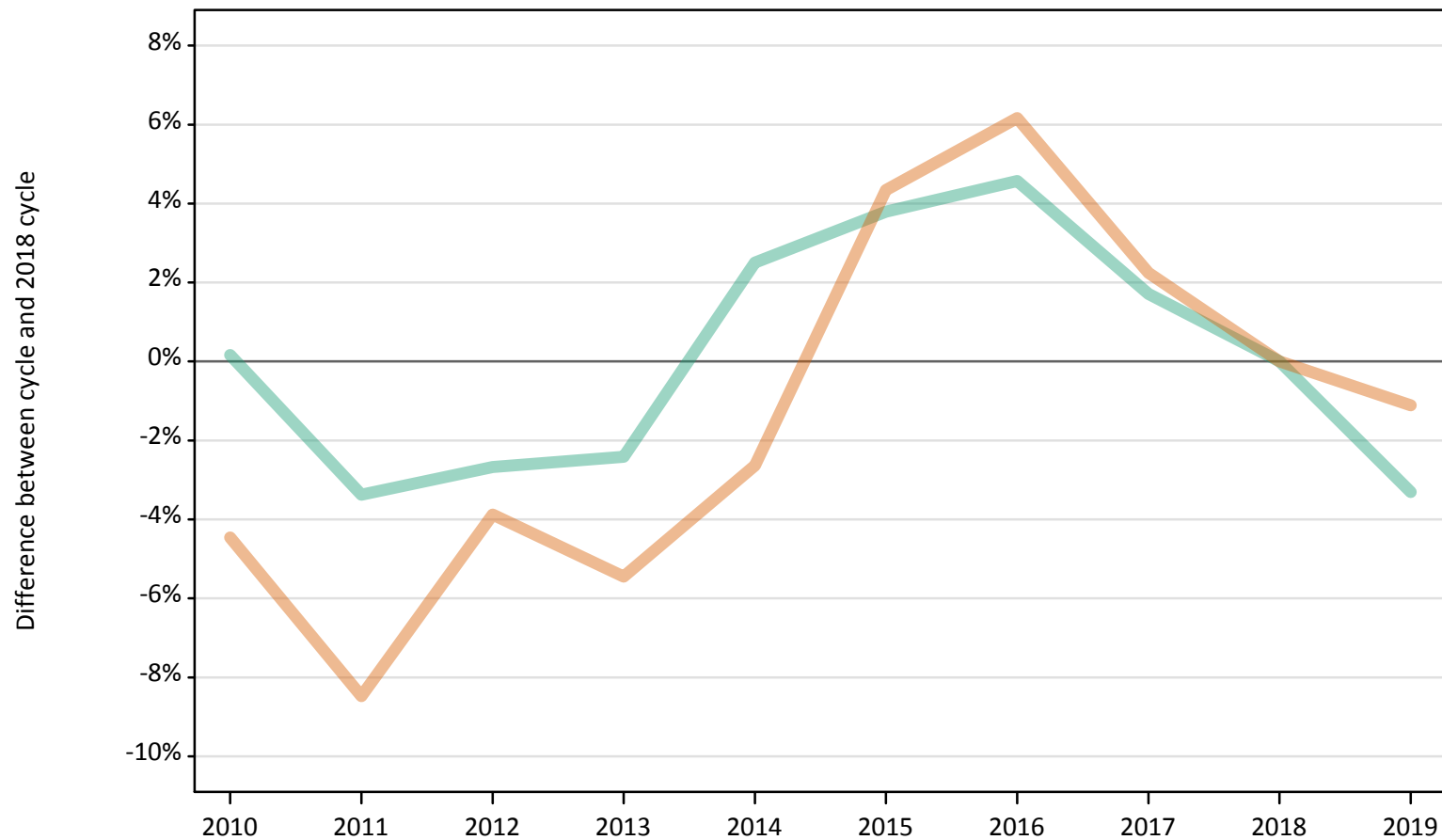
Placed applicants: absolute change relative to 2018 cycle totals

Applicant Status	Sex	2010	2011	2012	2013	2014	2015	2016	2017	2018	2019
Placed	Men	210	80	310	310	570	620	590	310	0	-260
	Women	-1,260	-1,230	-880	-760	-240	90	390	190	0	-90
	All	-1,050	-1,150	-580	-450	330	720	990	510	0	-350

### S.53 Placed 18 year old applicants from Wales by sex: 28 days after A level results day

Placed 18 year old applicants: change relative to 2018 cycle totals

Men  
Women



Note: The percentage change is not plotted in the above chart for groups with fewer than 30 placed applicants in any one cycle.

### S.54 Placed 18 year old applicants from Wales by sex: 28 days after A level results day

Applicant Status	Sex	2010	2011	2012	2013	2014	2015	2016	2017	2018	2019
Placed	Men	4,280	4,130	4,160	4,170	4,380	4,430	4,460	4,340	4,270	4,130
	Women	5,610	5,380	5,650	5,560	5,720	6,130	6,240	6,010	5,880	5,810
	All	9,890	9,500	9,800	9,720	10,100	10,560	10,700	10,350	10,140	9,940

### S.55 Placed 18 year old applicants from Wales by sex: 28 days after A level results day

Placed 18 year old applicants: change relative to 2018 cycle totals

Applicant Status	Sex	2010	2011	2012	2013	2014	2015	2016	2017	2018	2019
Placed	Men	0%	-3%	-3%	-2%	3%	4%	5%	2%	0%	-3%
	Women	-4%	-8%	-4%	-5%	-3%	4%	6%	2%	0%	-1%
	All	-3%	-6%	-3%	-4%	-0%	4%	5%	2%	0%	-2%

Note: The percentage change is not recorded in the above table for groups with fewer than 10 placed applicants in that cycle or in the 2018 cycle.

### S.56 Placed 18 year old applicants from Wales by sex: 28 days after A level results day

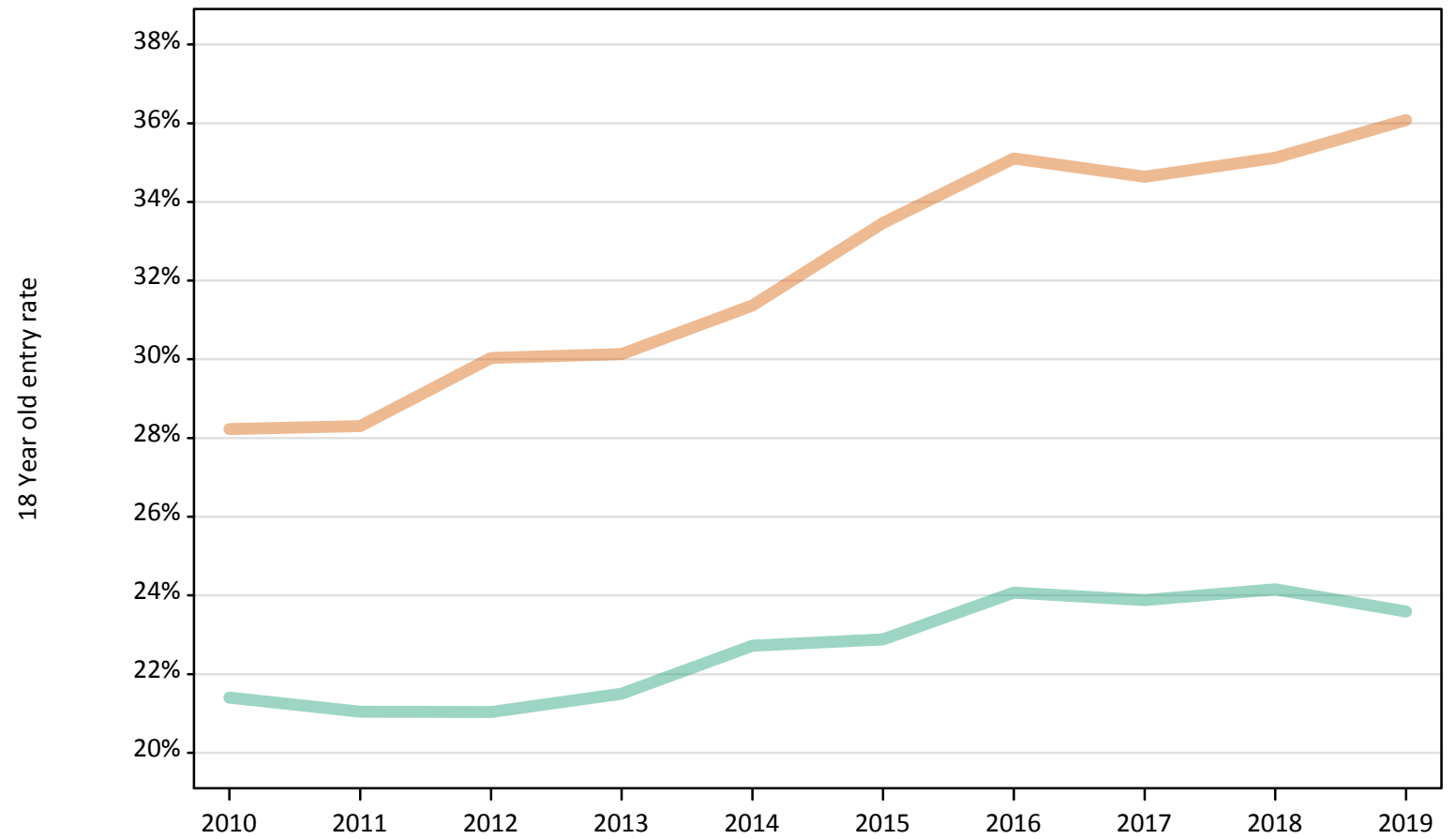
Placed 18 year old applicants: absolute change relative to 2018 cycle totals

Applicant Status	Sex	2010	2011	2012	2013	2014	2015	2016	2017	2018	2019
Placed	Men	10	-140	-110	-100	110	160	200	70	0	-140
	Women	-260	-500	-230	-320	-160	260	360	130	0	-70
	All	-260	-640	-340	-420	-50	420	560	210	0	-210

## S.57 Placed 18 year old applicants from Wales by sex: 28 days after A level results day

Placed 18 year old applicants: entry rate

Men  
Women



**S.58 Placed 18 year old applicants from Wales by sex: 28 days after A level results day**

Placed 18 year old applicants: entry rate

Applicant Status	Sex	2010	2011	2012	2013	2014	2015	2016	2017	2018	2019
Placed	Men	21.4%	21.0%	21.0%	21.5%	22.7%	22.9%	24.1%	23.9%	24.2%	23.6%
	Women	28.2%	28.3%	30.0%	30.1%	31.4%	33.5%	35.1%	34.6%	35.1%	36.1%
	All	24.8%	24.6%	25.4%	25.7%	26.9%	28.0%	29.5%	29.1%	29.5%	29.6%

**S.59 Placed 18 year old applicants from Wales by sex: 28 days after A level results day**

Placed 18 year old applicants: entry rate (indexed to 100 = Men)

Applicant Status	Sex	2010	2011	2012	2013	2014	2015	2016	2017	2018	2019
Placed	Men	100	100	100	100	100	100	100	100	100	100
	Women	132	134	143	140	138	146	146	145	145	153



### S.60 Placed applicants from the EU (excluding the UK) by sex: 28 days after A level results day

Placed applicants: change relative to 2018 cycle totals

Men  
Women



Note: The percentage change is not plotted in the above chart for groups with fewer than 30 placed applicants in any one cycle.

### S.61 Placed applicants from the EU (excluding the UK) by sex: 28 days after A level results day

Applicant Status	Sex	2010	2011	2012	2013	2014	2015	2016	2017	2018	2019
Placed	Men	11,010	11,660	10,020	10,480	11,070	12,020	12,810	12,650	12,510	12,420
	Women	13,210	14,250	12,500	13,310	14,600	16,330	17,730	17,200	17,840	17,930
	All	24,230	25,920	22,510	23,780	25,670	28,350	30,540	29,850	30,350	30,350

### S.62 Placed applicants from the EU (excluding the UK) by sex: 28 days after A level results day

Placed applicants: change relative to 2018 cycle totals

Applicant Status	Sex	2010	2011	2012	2013	2014	2015	2016	2017	2018	2019
Placed	Men	-12%	-7%	-20%	-16%	-12%	-4%	2%	1%	0%	-1%
	Women	-26%	-20%	-30%	-25%	-18%	-8%	-1%	-4%	0%	1%
	All	-20%	-15%	-26%	-22%	-15%	-7%	1%	-2%	0%	-0%

Note: The percentage change is not recorded in the above table for groups with fewer than 10 placed applicants in that cycle or in the 2018 cycle.

### S.63 Placed applicants from the EU (excluding the UK) by sex: 28 days after A level results day

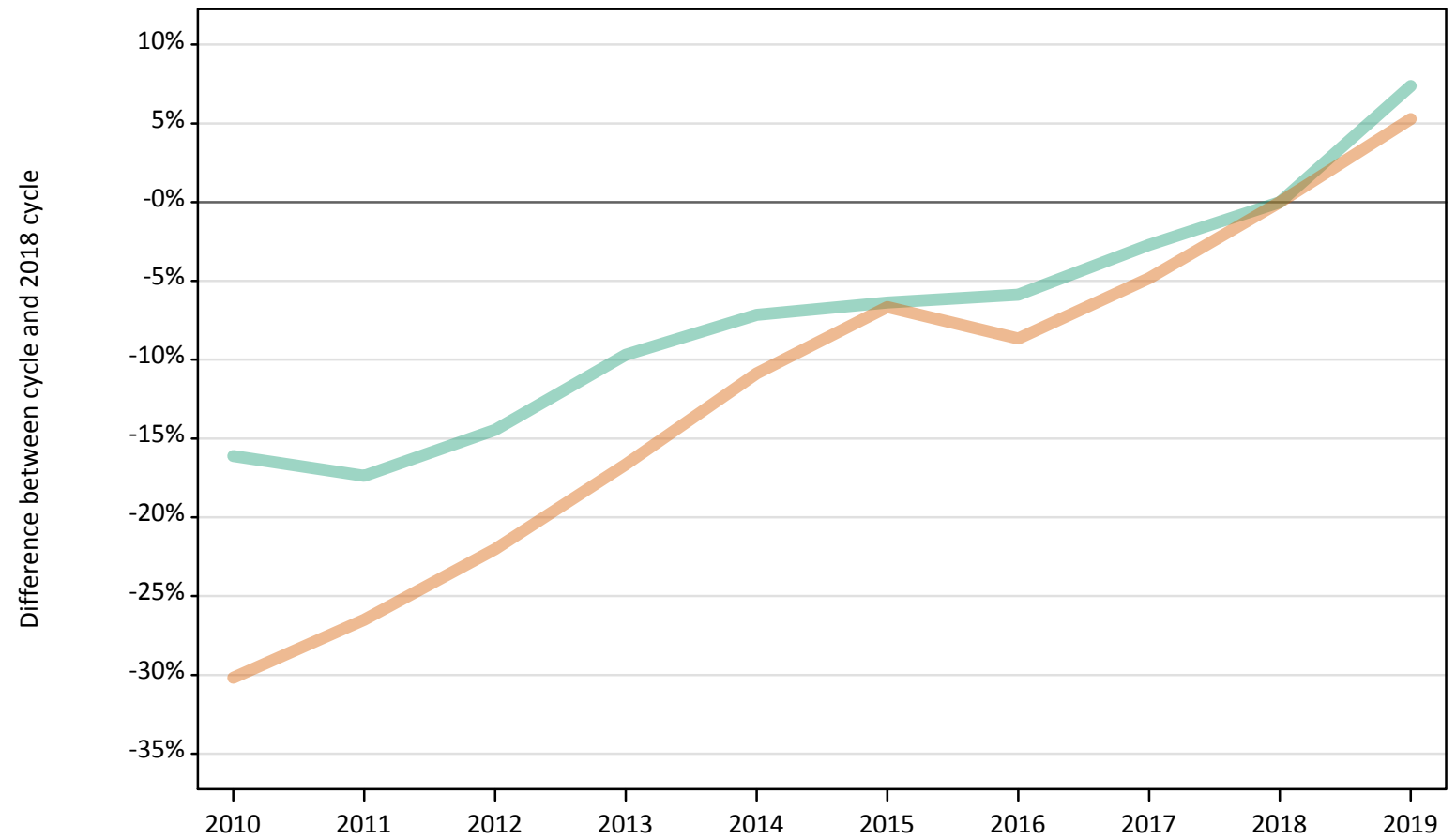
Placed applicants: absolute change relative to 2018 cycle totals

Applicant Status	Sex	2010	2011	2012	2013	2014	2015	2016	2017	2018	2019
Placed	Men	-1,500	-850	-2,500	-2,030	-1,440	-490	300	140	0	-90
	Women	-4,630	-3,590	-5,350	-4,540	-3,240	-1,510	-110	-640	0	90
	All	-6,130	-4,440	-7,840	-6,570	-4,680	-2,000	190	-500	0	0

### S.64 Placed applicants from overseas (not EU) by sex: 28 days after A level results day

Placed applicants: change relative to 2018 cycle totals

Men  
Women



Note: The percentage change is not plotted in the above chart for groups with fewer than 30 placed applicants in any one cycle.

### S.65 Placed applicants from overseas (not EU) by sex: 28 days after A level results day

Applicant Status	Sex	2010	2011	2012	2013	2014	2015	2016	2017	2018	2019
Placed	Men	14,790	14,570	15,080	15,920	16,370	16,500	16,590	17,150	17,630	18,930
	Women	14,460	15,220	16,150	17,260	18,450	19,330	18,910	19,700	20,700	21,800
	All	29,240	29,780	31,230	33,180	34,820	35,830	35,500	36,850	38,330	40,720

### S.66 Placed applicants from overseas (not EU) by sex: 28 days after A level results day

Placed applicants: change relative to 2018 cycle totals

Applicant Status	Sex	2010	2011	2012	2013	2014	2015	2016	2017	2018	2019
Placed	Men	-16%	-17%	-14%	-10%	-7%	-6%	-6%	-3%	0%	7%
	Women	-30%	-26%	-22%	-17%	-11%	-7%	-9%	-5%	0%	5%
	All	-24%	-22%	-19%	-13%	-9%	-7%	-7%	-4%	0%	6%

Note: The percentage change is not recorded in the above table for groups with fewer than 10 placed applicants in that cycle or in the 2018 cycle.

### S.67 Placed applicants from overseas (not EU) by sex: 28 days after A level results day

Placed applicants: absolute change relative to 2018 cycle totals

Applicant Status	Sex	2010	2011	2012	2013	2014	2015	2016	2017	2018	2019
Placed	Men	-2,840	-3,060	-2,550	-1,710	-1,260	-1,120	-1,040	-480	0	1,300
	Women	-6,250	-5,490	-4,560	-3,450	-2,250	-1,380	-1,790	-1,000	0	1,090
	All	-9,090	-8,550	-7,110	-5,150	-3,510	-2,500	-2,830	-1,480	0	2,390