

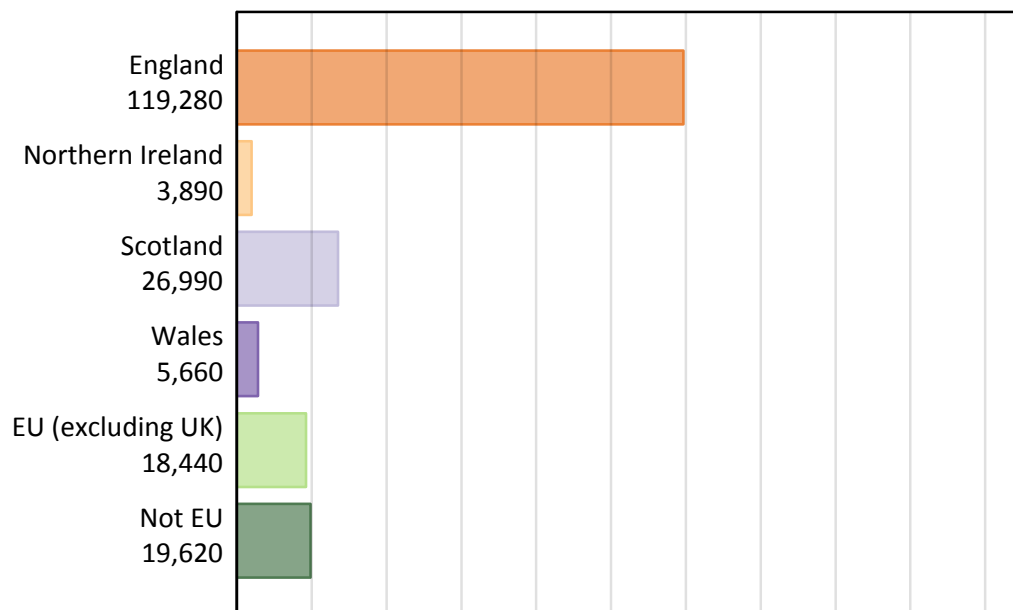
Daily Clearing Analysis: Country

Analysis at 00:05 on Tuesday 4 August 2015 (SQA results day)

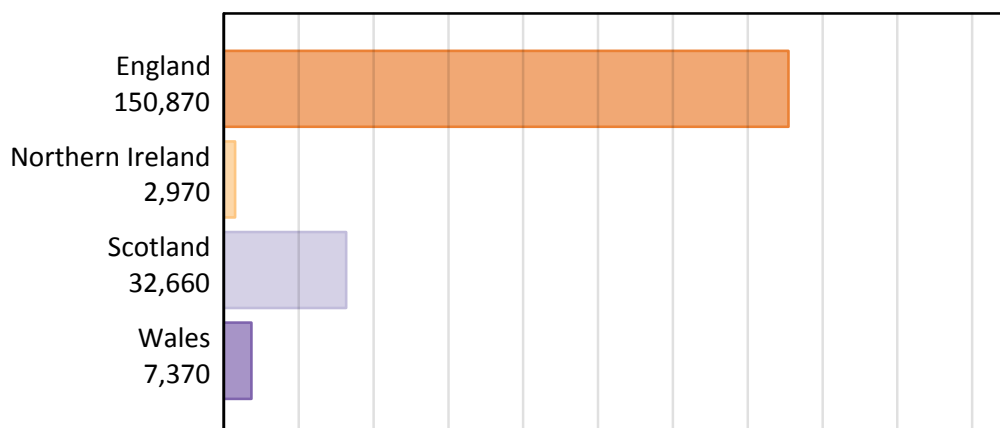
B.1 Placed applicants by country of provider and domicile, 2015 cycle

Domicile of applicant	Country of provider				
	England	Northern Ireland	Scotland	Wales	UK
England	115,300	350	1,150	2,480	119,280
Northern Ireland	1,220	2,400	230	40	3,890
Scotland	780	10	26,180	20	26,990
Wales	2,220	0	30	3,400	5,660
EU (excluding UK)	14,300	110	3,240	790	18,440
Not EU	17,060	90	1,830	630	19,620
All	150,870	2,970	32,660	7,370	193,860

B.2 Placed applicants by domicile group

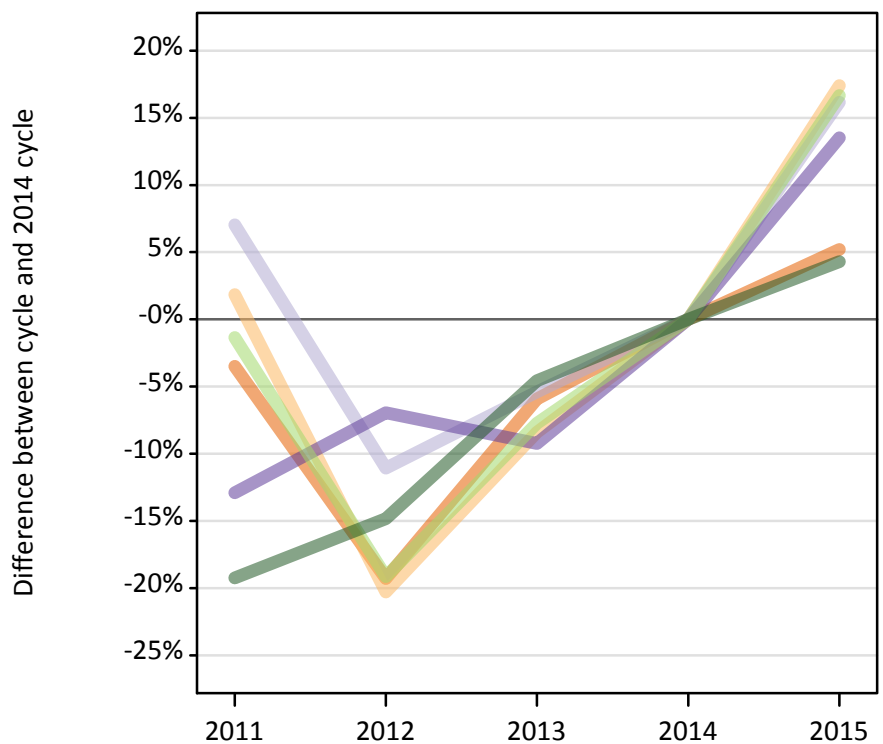


B.3 Placed applicants by country of provider



B.4 Placed applicants at SQA results day: providers in England

Selected applicant domiciles: difference between cycle and 2014 cycle (at SQA results day)



B.5 Placed applicants at SQA results day: providers in England

Placed applicants by domicile (at SQA results day)

Domicile of applicant	2011	2012	2013	2014	2015
England	105,760	88,450	103,110	109,600	115,300
Northern Ireland	1,050	830	950	1,040	1,220
Scotland	720	590	630	670	780
Wales	1,710	1,820	1,780	1,960	2,220
EU (excluding UK)	12,090	9,910	11,310	12,250	14,300
Not EU	13,210	13,930	15,610	16,360	17,060

B.6 Placed applicants at SQA results day: providers in England

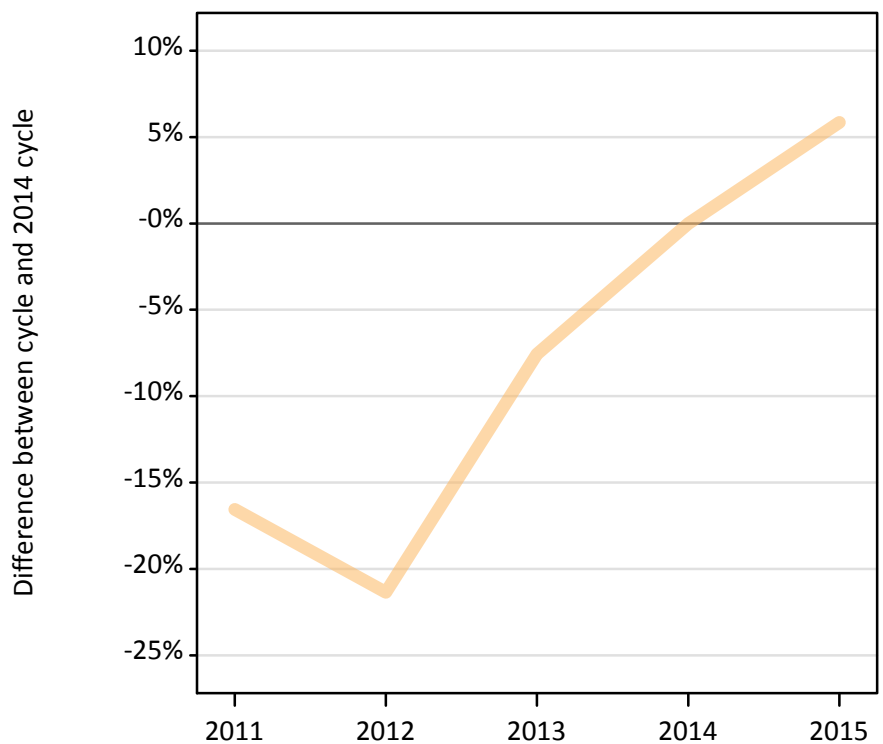
Selected applicant domiciles: difference between cycle and 2014 cycle (at SQA results day)

Domicile of applicant	2011	2012	2013	2014	2015
England	-3%	-19%	-6%	0%	5%
Northern Ireland	2%	-20%	-8%	0%	17%
Scotland	7%	-11%	-5%	0%	16%
Wales	-13%	-7%	-9%	0%	14%
EU (excluding UK)	-1%	-19%	-8%	0%	17%
Not EU	-19%	-15%	-5%	0%	4%

B.7 Placed applicants at SQA results day: providers in Northern Ireland

Selected applicant domiciles: difference between cycle and 2014 cycle (at SQA results day)

— Northern Ireland



B.8 Placed applicants at SQA results day: providers in Northern Ireland

Placed applicants by domicile (at SQA results day)

Domicile of applicant	2011	2012	2013	2014	2015
England	50	40	80	90	350
Northern Ireland	1,900	1,790	2,100	2,270	2,400
Scotland	10	20	10	10	10
Wales	0	0	0	0	0
EU (excluding UK)	140	130	150	140	110
Not EU	70	100	120	130	90

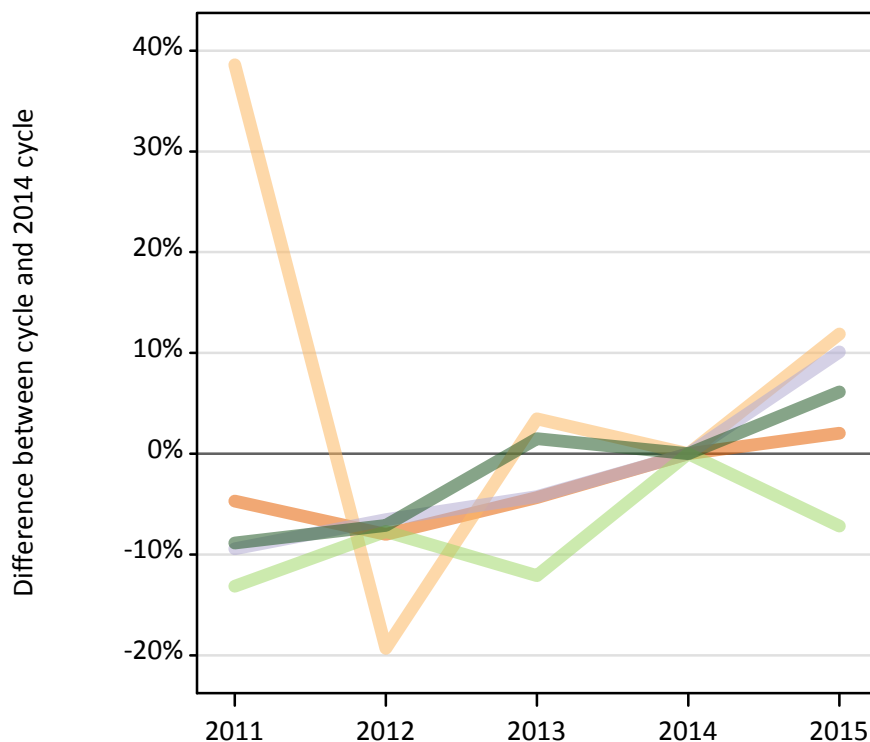
B.9 Placed applicants at SQA results day: providers in Northern Ireland

Selected applicant domiciles: difference between cycle and 2014 cycle (at SQA results day)

Domicile of applicant	2011	2012	2013	2014	2015
Northern Ireland	-17%	-21%	-8%	0%	6%

B.10 Placed applicants at SQA results day: providers in Scotland

Selected applicant domiciles: difference between cycle and 2014 cycle (at SQA results day)



B.11 Placed applicants at SQA results day: providers in Scotland

Placed applicants by domicile (at SQA results day)

Domicile of applicant	2011	2012	2013	2014	2015
England	1,070	1,040	1,080	1,130	1,150
Northern Ireland	280	160	210	200	230
Scotland	21,540	22,220	22,770	23,780	26,180
Wales	30	30	30	30	30
EU (excluding UK)	3,030	3,220	3,070	3,490	3,240
Not EU	1,580	1,610	1,750	1,730	1,830

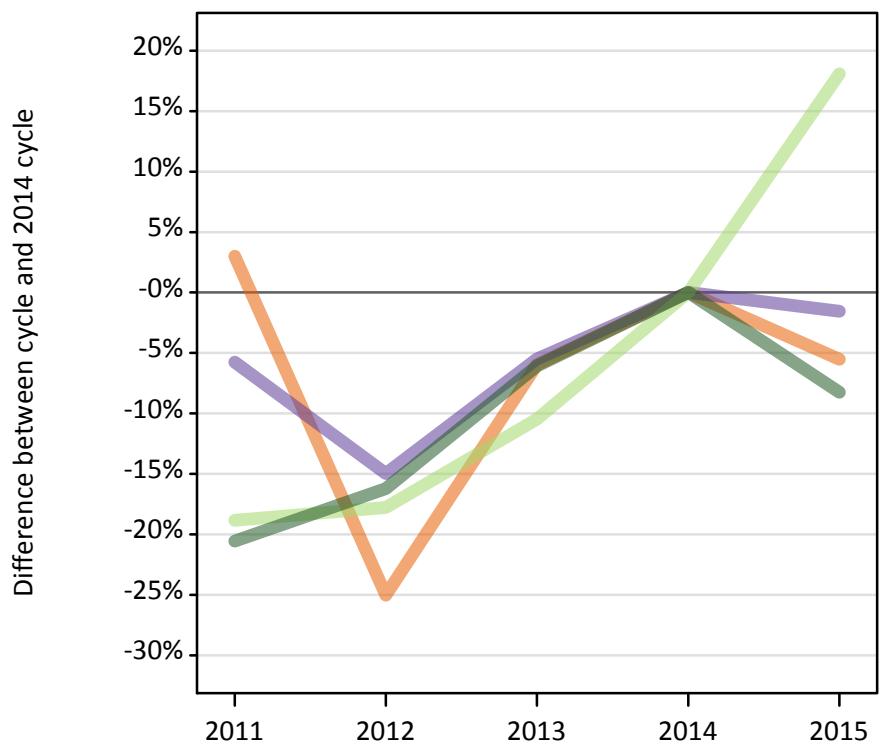
B.12 Placed applicants at SQA results day: providers in Scotland

Selected applicant domiciles: difference between cycle and 2014 cycle (at SQA results day)

Domicile of applicant	2011	2012	2013	2014	2015
England	-5%	-8%	-4%	0%	2%
Northern Ireland	39%	-19%	3%	0%	12%
Scotland	-9%	-7%	-4%	0%	10%
EU (excluding UK)	-13%	-8%	-12%	0%	-7%
Not EU	-9%	-7%	2%	0%	6%

B.13 Placed applicants at SQA results day: providers in Wales

Selected applicant domiciles: difference between cycle and 2014 cycle (at SQA results day)



B.14 Placed applicants at SQA results day: providers in Wales

Placed applicants by domicile (at SQA results day)

Domicile of applicant	2011	2012	2013	2014	2015
England	2,700	1,970	2,470	2,630	2,480
Northern Ireland	60	40	50	40	40
Scotland	30	20	30	30	20
Wales	3,260	2,940	3,270	3,460	3,400
EU (excluding UK)	540	550	600	670	790
Not EU	550	580	650	690	630

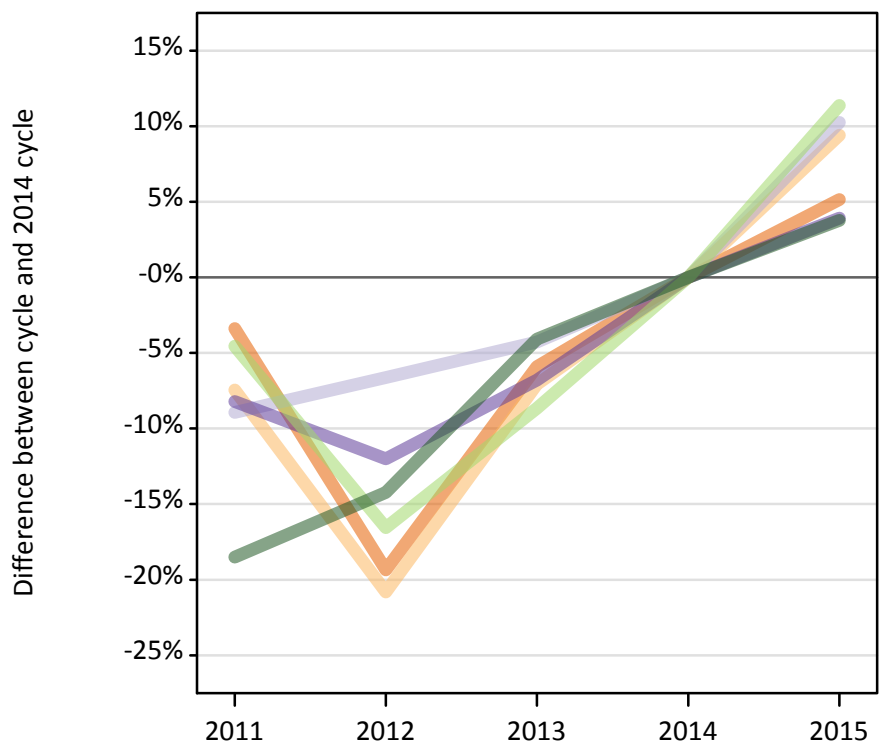
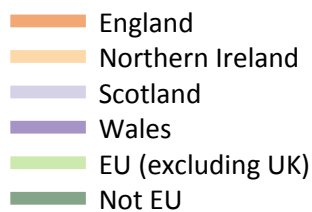
B.15 Placed applicants at SQA results day: providers in Wales

Selected applicant domiciles: difference between cycle and 2014 cycle (at SQA results day)

Domicile of applicant	2011	2012	2013	2014	2015
England	3%	-25%	-6%	0%	-6%
Wales	-6%	-15%	-5%	0%	-2%
EU (excluding UK)	-19%	-18%	-10%	0%	18%
Not EU	-21%	-16%	-6%	0%	-8%

B.16 Placed applicants at SQA results day: providers in the UK

Selected applicant domiciles: difference between cycle and 2014 cycle (at SQA results day)



B.17 Placed applicants at SQA results day: providers in the UK

Placed applicants by domicile (at SQA results day)

Domicile of applicant	2011	2012	2013	2014	2015
England	109,590	91,490	106,730	113,440	119,280
Northern Ireland	3,290	2,810	3,300	3,550	3,890
Scotland	22,290	22,860	23,430	24,480	26,990
Wales	5,000	4,790	5,070	5,440	5,660
EU (excluding UK)	15,800	13,820	15,120	16,560	18,440
Not EU	15,410	16,220	18,140	18,910	19,620

B.18 Placed applicants at SQA results day: providers in the UK

Selected applicant domiciles: difference between cycle and 2014 cycle (at SQA results day)

Domicile of applicant	2011	2012	2013	2014	2015
England	-3%	-19%	-6%	0%	5%
Northern Ireland	-7%	-21%	-7%	0%	9%
Scotland	-9%	-7%	-4%	0%	10%
Wales	-8%	-12%	-7%	0%	4%
EU (excluding UK)	-5%	-17%	-9%	0%	11%
Not EU	-19%	-14%	-4%	0%	4%