

Daily Clearing Analysis: Region

Analysis at 00:05 on Thursday 13 August 2015 (A level results day - No Scot.X1)

RX.1 Placed applicants by region of domicile: A level results day

Placed applicants: change relative to 2014 cycle totals

- North East
- North West
- Yorkshire and The Humber
- East Midlands
- West Midlands
- East of England
- London
- South East
- South West



RX.2 Placed applicants by region of domicile: A level results day

| Applicant Status | Domicile | 2011 | 2012 | 2013 | 2014 | 2015 |
|------------------|--------------------------|---------|---------|---------|---------|---------|
| Placed | North East | 13,020 | 11,700 | 13,190 | 12,790 | 13,440 |
| | North West | 39,930 | 36,540 | 39,250 | 39,890 | 40,120 |
| | Yorkshire and The Humber | 26,940 | 24,730 | 27,050 | 27,620 | 28,320 |
| | East Midlands | 22,490 | 20,690 | 22,880 | 23,630 | 23,230 |
| | West Midlands | 29,130 | 27,700 | 30,810 | 31,720 | 32,480 |
| | East of England | 30,530 | 27,950 | 30,600 | 31,040 | 31,610 |
| | London | 46,430 | 43,230 | 47,910 | 49,510 | 53,110 |
| | South East | 47,830 | 43,570 | 46,920 | 48,210 | 49,710 |
| | South West | 27,660 | 24,450 | 27,470 | 28,240 | 28,590 |
| | (England total) | 283,960 | 260,570 | 286,070 | 292,640 | 300,600 |
| | Scotland | 25,740 | 25,550 | 26,290 | 27,340 | 28,130 |
| | Northern Ireland | 10,780 | 9,670 | 11,260 | 11,100 | 11,210 |
| | Wales | 14,180 | 14,910 | 15,240 | 15,980 | 16,220 |
| | UK | 334,660 | 310,700 | 338,850 | 347,070 | 356,160 |

RX.3 Placed applicants by region of domicile: A level results day

Placed applicants: change relative to 2014 cycle totals

| Applicant Status | Domicile | 2011 | 2012 | 2013 | 2014 | 2015 |
|------------------|--------------------------|------|------|------|------|------|
| Placed | North East | 2% | -9% | 3% | 0% | 5% |
| | North West | 0% | -8% | -2% | 0% | 1% |
| | Yorkshire and The Humber | -2% | -10% | -2% | 0% | 3% |
| | East Midlands | -5% | -12% | -3% | 0% | -2% |
| | West Midlands | -8% | -13% | -3% | 0% | 2% |
| | East of England | -2% | -10% | -1% | 0% | 2% |
| | London | -6% | -13% | -3% | 0% | 7% |
| | South East | -1% | -10% | -3% | 0% | 3% |
| | South West | -2% | -13% | -3% | 0% | 1% |
| | (England total) | -3% | -11% | -2% | 0% | 3% |
| | Scotland | -6% | -7% | -4% | 0% | 3% |
| | Northern Ireland | -3% | -13% | 1% | 0% | 1% |
| | Wales | -11% | -7% | -5% | 0% | 1% |
| | UK | -4% | -10% | -2% | 0% | 3% |

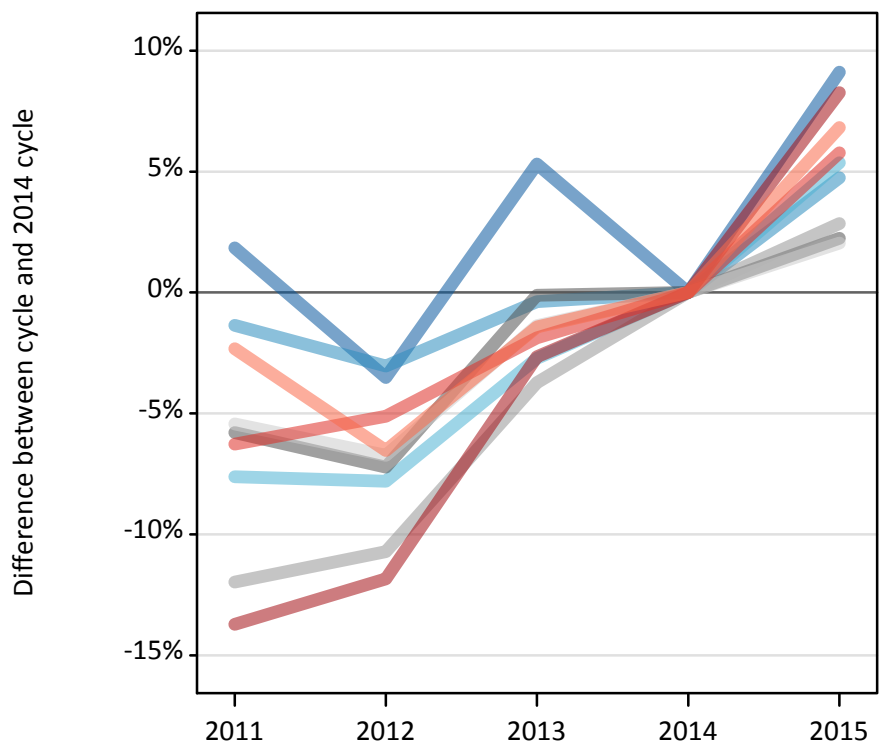
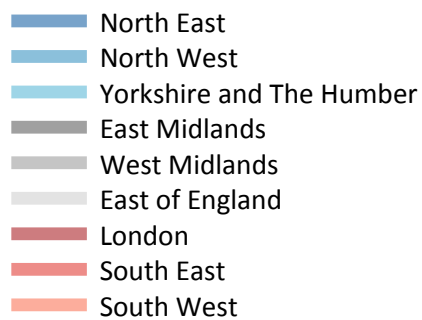
RX.4 Placed applicants by region of domicile: A level results day

Placed applicants: absolute change relative to 2014 cycle totals

| Applicant Status | Domicile | 2011 | 2012 | 2013 | 2014 | 2015 |
|------------------|--------------------------|---------|---------|--------|------|-------|
| Placed | North East | 220 | -1,100 | 400 | 0 | 650 |
| | North West | 40 | -3,350 | -640 | 0 | 230 |
| | Yorkshire and The Humber | -690 | -2,890 | -570 | 0 | 700 |
| | East Midlands | -1,140 | -2,940 | -750 | 0 | -400 |
| | West Midlands | -2,580 | -4,020 | -910 | 0 | 770 |
| | East of England | -510 | -3,090 | -440 | 0 | 570 |
| | London | -3,080 | -6,280 | -1,600 | 0 | 3,600 |
| | South East | -370 | -4,630 | -1,290 | 0 | 1,500 |
| | South West | -580 | -3,790 | -770 | 0 | 350 |
| | (England total) | -8,680 | -32,070 | -6,570 | 0 | 7,960 |
| | Scotland | -1,600 | -1,790 | -1,050 | 0 | 790 |
| | Northern Ireland | -320 | -1,430 | 160 | 0 | 110 |
| | Wales | -1,810 | -1,080 | -750 | 0 | 240 |
| | UK | -12,410 | -36,370 | -8,220 | 0 | 9,090 |

RX.5 Placed 18 year old applicants by region of domicile: A level results day

Placed 18 year old applicants: change relative to 2014 cycle totals



RX.6 Placed 18 year old applicants by region of domicile: A level results day

| Applicant Status | Domicile | 2011 | 2012 | 2013 | 2014 | 2015 |
|------------------|--------------------------|---------|---------|---------|---------|---------|
| Placed | North East | 6,690 | 6,330 | 6,910 | 6,570 | 7,160 |
| | North West | 21,620 | 21,250 | 21,840 | 21,920 | 22,960 |
| | Yorkshire and The Humber | 14,160 | 14,130 | 14,910 | 15,330 | 16,150 |
| | East Midlands | 12,170 | 11,980 | 12,900 | 12,920 | 13,210 |
| | West Midlands | 15,260 | 15,480 | 16,690 | 17,340 | 17,830 |
| | East of England | 17,340 | 17,100 | 18,090 | 18,340 | 18,710 |
| | London | 21,860 | 22,330 | 24,660 | 25,330 | 27,420 |
| | South East | 25,610 | 25,920 | 26,810 | 27,320 | 28,900 |
| | South West | 13,750 | 13,160 | 13,880 | 14,080 | 15,040 |
| | (England total) | 148,450 | 147,690 | 156,680 | 159,130 | 167,380 |
| | Scotland | 13,160 | 13,220 | 13,340 | 13,700 | 13,760 |
| | Northern Ireland | 6,640 | 6,020 | 6,910 | 6,620 | 6,730 |
| | Wales | 7,680 | 8,280 | 8,310 | 8,640 | 8,980 |
| | UK | 175,930 | 175,210 | 185,250 | 188,080 | 196,850 |

RX.7 Placed 18 year old applicants by region of domicile: A level results day

Placed 18 year old applicants: change relative to 2014 cycle totals

| Applicant Status | Domicile | 2011 | 2012 | 2013 | 2014 | 2015 |
|------------------|--------------------------|------|------|------|------|------|
| Placed | North East | 2% | -4% | 5% | 0% | 9% |
| | North West | -1% | -3% | -0% | 0% | 5% |
| | Yorkshire and The Humber | -8% | -8% | -3% | 0% | 5% |
| | East Midlands | -6% | -7% | -0% | 0% | 2% |
| | West Midlands | -12% | -11% | -4% | 0% | 3% |
| | East of England | -5% | -7% | -1% | 0% | 2% |
| | London | -14% | -12% | -3% | 0% | 8% |
| | South East | -6% | -5% | -2% | 0% | 6% |
| | South West | -2% | -7% | -1% | 0% | 7% |
| | (England total) | -7% | -7% | -2% | 0% | 5% |
| | Scotland | -4% | -3% | -3% | 0% | 0% |
| | Northern Ireland | 0% | -9% | 5% | 0% | 2% |
| | Wales | -11% | -4% | -4% | 0% | 4% |
| | UK | -6% | -7% | -2% | 0% | 5% |

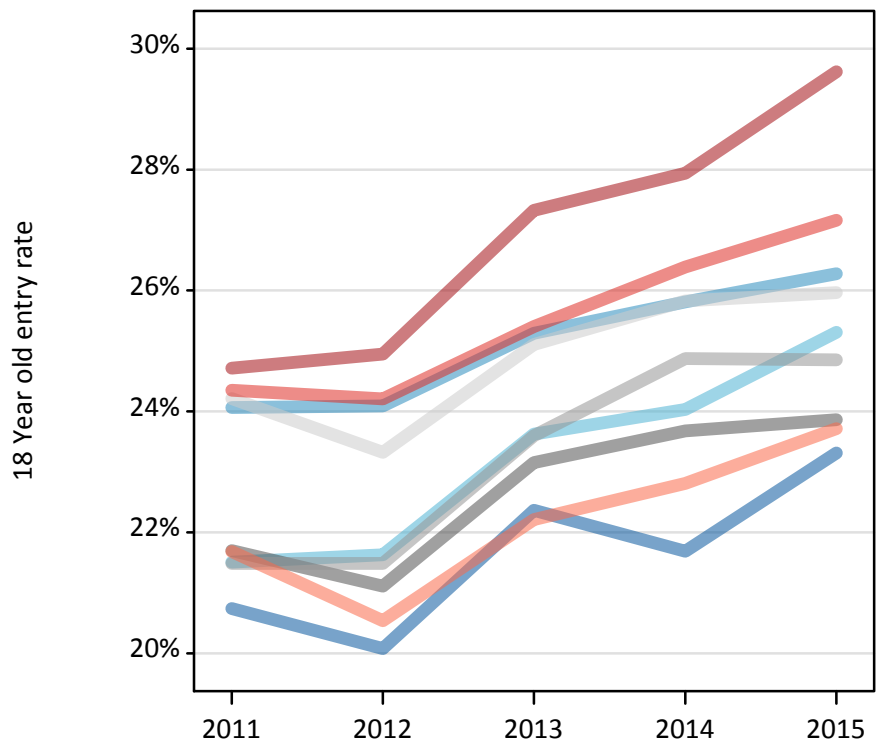
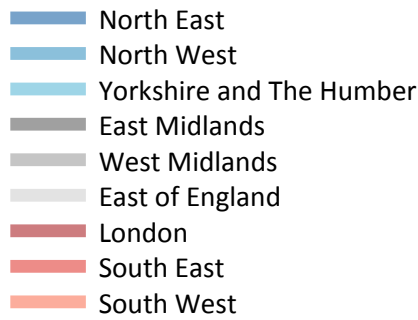
RX.8 Placed 18 year old applicants by region of domicile: A level results day

Placed 18 year old applicants: absolute change relative to 2014 cycle totals

| Applicant Status | Domicile | 2011 | 2012 | 2013 | 2014 | 2015 |
|------------------|--------------------------|---------|---------|--------|------|-------|
| Placed | North East | 120 | -230 | 350 | 0 | 600 |
| | North West | -300 | -670 | -80 | 0 | 1,040 |
| | Yorkshire and The Humber | -1,170 | -1,200 | -420 | 0 | 820 |
| | East Midlands | -750 | -930 | -10 | 0 | 290 |
| | West Midlands | -2,080 | -1,860 | -650 | 0 | 490 |
| | East of England | -1,000 | -1,240 | -250 | 0 | 380 |
| | London | -3,480 | -3,000 | -670 | 0 | 2,090 |
| | South East | -1,710 | -1,400 | -510 | 0 | 1,580 |
| | South West | -330 | -920 | -200 | 0 | 960 |
| | (England total) | -10,680 | -11,440 | -2,450 | 0 | 8,250 |
| | Scotland | -540 | -480 | -360 | 0 | 60 |
| | Northern Ireland | 20 | -600 | 300 | 0 | 110 |
| | Wales | -960 | -360 | -330 | 0 | 340 |
| | UK | -12,160 | -12,870 | -2,840 | 0 | 8,770 |

RX.9 Placed 18 year old applicants by region of domicile: A level results day

Placed 18 year old applicants: entry rate



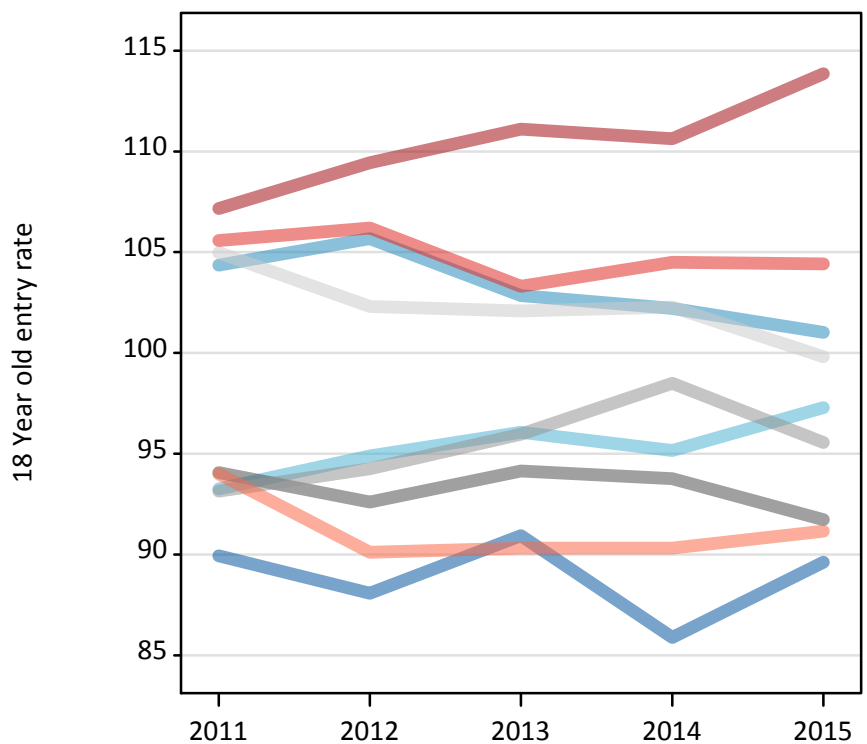
RX.10 Placed 18 year old applicants by region of domicile: A level results day

Placed 18 year old applicants: entry rate

| Applicant Status | Domicile | 2011 | 2012 | 2013 | 2014 | 2015 |
|------------------|--------------------------|-------|-------|-------|-------|-------|
| Placed | North East | 20.7% | 20.1% | 22.4% | 21.7% | 23.3% |
| | North West | 24.1% | 24.1% | 25.3% | 25.8% | 26.3% |
| | Yorkshire and The Humber | 21.5% | 21.6% | 23.6% | 24.0% | 25.3% |
| | East Midlands | 21.7% | 21.1% | 23.2% | 23.7% | 23.9% |
| | West Midlands | 21.5% | 21.5% | 23.6% | 24.9% | 24.9% |
| | East of England | 24.2% | 23.3% | 25.1% | 25.8% | 26.0% |
| | London | 24.7% | 24.9% | 27.3% | 27.9% | 29.6% |
| | South East | 24.4% | 24.2% | 25.4% | 26.4% | 27.2% |
| | South West | 21.7% | 20.5% | 22.2% | 22.8% | 23.7% |
| | (England total) | 23.1% | 22.8% | 24.6% | 25.3% | 26.0% |
| | Scotland | 20.9% | 21.3% | 21.7% | 22.4% | 22.9% |
| | Northern Ireland | 26.5% | 23.9% | 28.2% | 27.3% | 27.1% |
| | Wales | 19.9% | 21.5% | 22.0% | 23.0% | 23.8% |
| | UK | 22.8% | 22.7% | 24.3% | 25.0% | 25.7% |

RX.11 Placed 18 year old applicants by region of domicile: A level results day

Placed 18 year old applicants: entry rates (indexed to 100 = England)



RX.12 Placed 18 year old applicants by region of domicile: A level results day

Placed 18 year old applicants: entry rate (indexed to 100 = England)

| Applicant Status | Domicile | 2011 | 2012 | 2013 | 2014 | 2015 |
|------------------|--------------------------|------|------|------|------|------|
| Placed | North East | 90 | 88 | 91 | 86 | 90 |
| | North West | 104 | 106 | 103 | 102 | 101 |
| | Yorkshire and The Humber | 93 | 95 | 96 | 95 | 97 |
| | East Midlands | 94 | 93 | 94 | 94 | 92 |
| | West Midlands | 93 | 94 | 96 | 98 | 96 |
| | East of England | 105 | 102 | 102 | 102 | 100 |
| | London | 107 | 109 | 111 | 111 | 114 |
| | South East | 106 | 106 | 103 | 104 | 104 |
| | South West | 94 | 90 | 90 | 90 | 91 |
| | (England total) | 100 | 100 | 100 | 100 | 100 |