

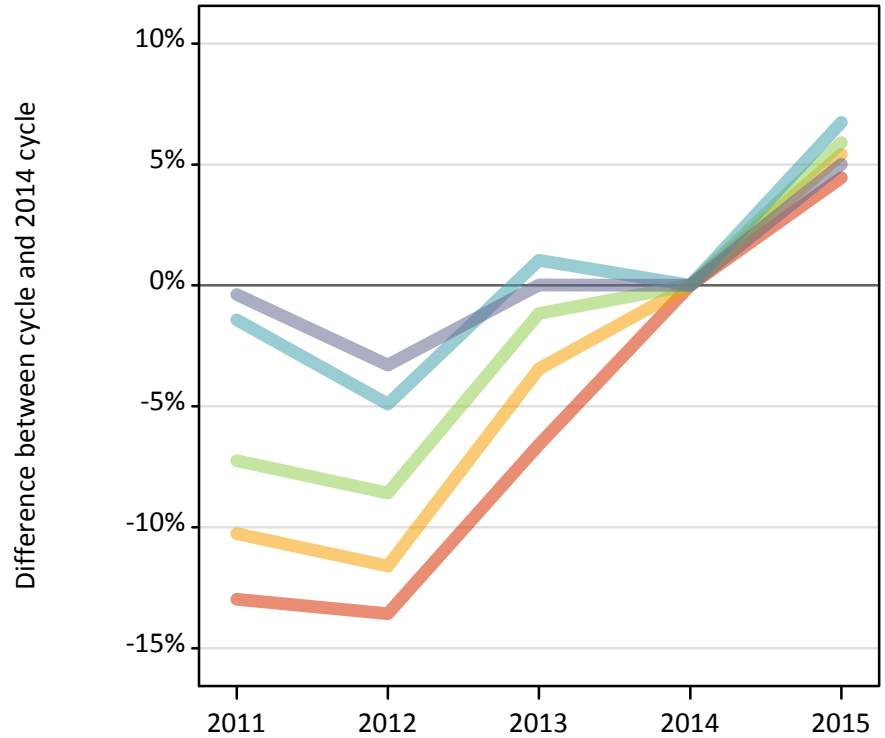
Daily Clearing Analysis: POLAR3

Analysis at 00:05 on Friday 14 August 2015 (1 day after A level results day)

P.1 Placed 18 year old applicants from England by POLAR3 quintile: 1 day after A level results day

Placed 18 year old applicants: change relative to 2014 cycle totals

- Quintile 1
- Quintile 2
- Quintile 3
- Quintile 4
- Quintile 5



P.2 Placed 18 year old applicants from England by POLAR3 quintile: 1 day after A level results day

Applicant Status	POLAR3	2011	2012	2013	2014	2015
Placed	Quintile 1	16,170	16,060	17,360	18,580	19,410
	Quintile 2	23,430	23,070	25,200	26,100	27,520
	Quintile 3	30,240	29,810	32,220	32,600	34,530
	Quintile 4	37,770	36,440	38,720	38,320	40,910
	Quintile 5	51,060	49,570	51,260	51,250	53,820

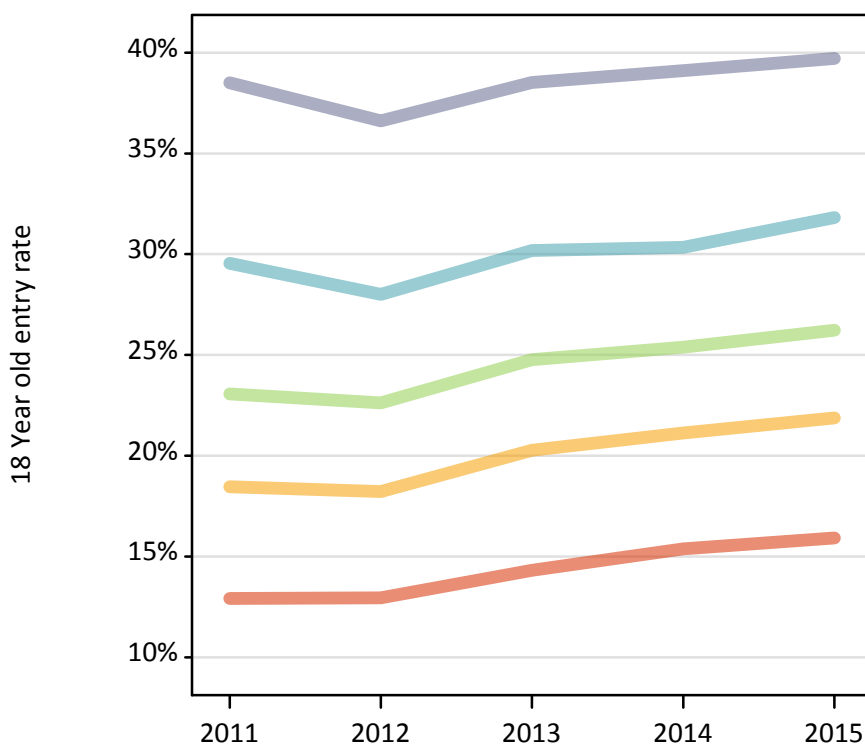
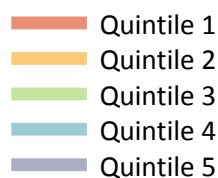
P.3 Placed 18 year old applicants from England by POLAR3 quintile: 1 day after A level results day

Placed 18 year old applicants: change relative to 2014 cycle totals

Applicant Status	POLAR3	2011	2012	2013	2014	2015
Placed	Quintile 1	-13%	-14%	-7%	0%	4%
	Quintile 2	-10%	-12%	-3%	0%	5%
	Quintile 3	-7%	-9%	-1%	0%	6%
	Quintile 4	-1%	-5%	1%	0%	7%
	Quintile 5	-0%	-3%	0%	0%	5%

P.4 Placed 18 year old applicants from England by POLAR3 quintile: 1 day after A level results day

Placed 18 year old applicants: entry rate



P.5 Placed 18 year old applicants from England by POLAR3 quintile: 1 day after A level results day

Placed 18 year old applicants: entry rate

Applicant Status	POLAR3	2011	2012	2013	2014	2015
Placed	Quintile 1	12.9%	12.9%	14.3%	15.4%	15.9%
	Quintile 2	18.5%	18.2%	20.3%	21.1%	21.9%
	Quintile 3	23.1%	22.6%	24.8%	25.4%	26.2%
	Quintile 4	29.5%	28.0%	30.2%	30.3%	31.8%
	Quintile 5	38.5%	36.6%	38.5%	39.1%	39.7%

P.6 Placed 18 year old applicants from England by POLAR3 quintile: 1 day after A level results day

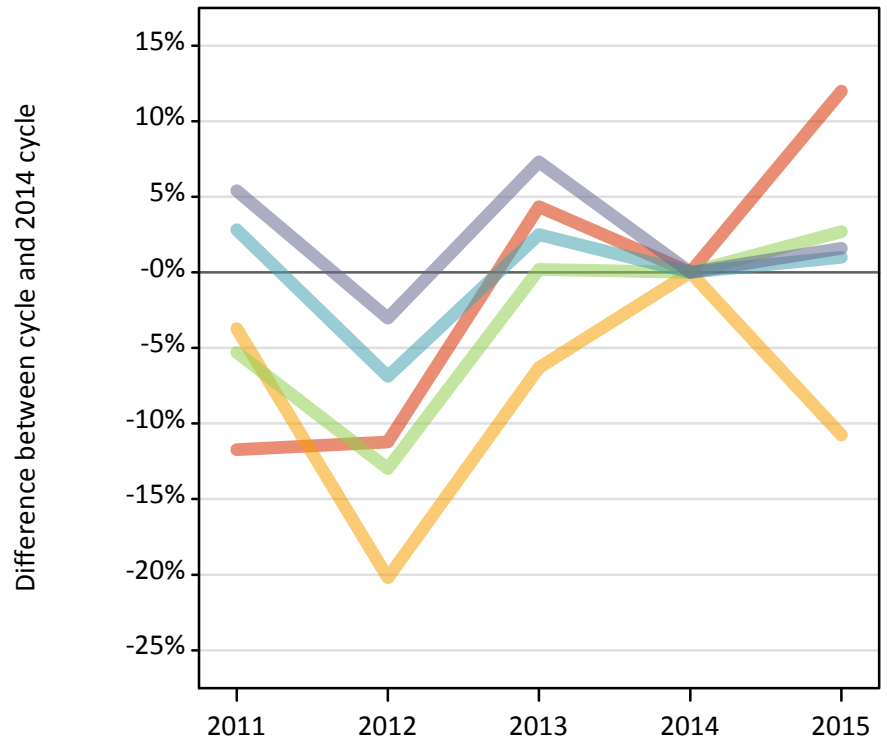
Placed 18 year old applicants: entry rate (indexed to 100 = Quintile 1)

Applicant Status	POLAR3	2011	2012	2013	2014	2015
Placed	Quintile 1	100	100	100	100	100
	Quintile 2	143	141	142	137	137
	Quintile 3	179	175	173	165	165
	Quintile 4	229	216	211	197	200
	Quintile 5	298	283	269	254	249

P.7 Placed 18 year old applicants from Northern Ireland by POLAR3 quintile: 1 day after A level results day

Placed 18 year old applicants: change relative to 2014 cycle totals

- Quintile 1
- Quintile 2
- Quintile 3
- Quintile 4
- Quintile 5



P.8 Placed 18 year old applicants from Northern Ireland by POLAR3 quintile: 1 day after A level results day

Applicant Status	POLAR3	2011	2012	2013	2014	2015
Placed	Quintile 1	350	350	410	390	440
	Quintile 2	670	560	650	700	620
	Quintile 3	1,020	940	1,080	1,080	1,110
	Quintile 4	2,180	1,980	2,170	2,120	2,140
	Quintile 5	2,930	2,700	2,980	2,780	2,820

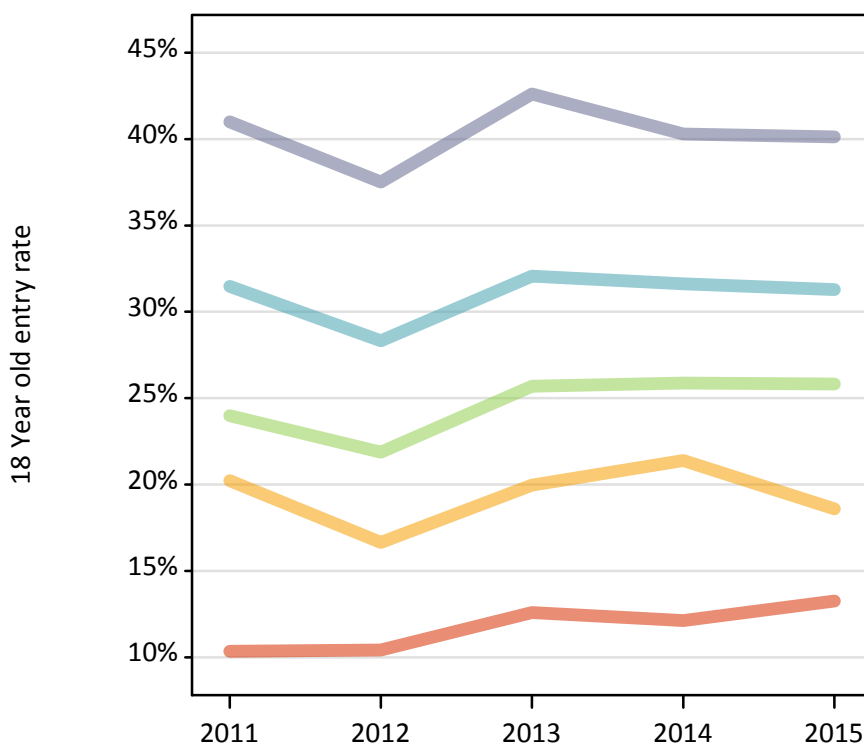
P.9 Placed 18 year old applicants from Northern Ireland by POLAR3 quintile: 1 day after A level results day

Placed 18 year old applicants: change relative to 2014 cycle totals

Applicant Status	POLAR3	2011	2012	2013	2014	2015
Placed	Quintile 1	-12%	-11%	4%	0%	12%
	Quintile 2	-4%	-20%	-6%	0%	-11%
	Quintile 3	-5%	-13%	0%	0%	3%
	Quintile 4	3%	-7%	2%	0%	1%
	Quintile 5	5%	-3%	7%	0%	2%

P.10 Placed 18 year old applicants from Northern Ireland by POLAR3 quintile: 1 day after A level results day

Placed 18 year old applicants: entry rate



P.11 Placed 18 year old applicants from Northern Ireland by POLAR3 quintile: 1 day after A level results day

Placed 18 year old applicants: entry rate

Applicant Status	POLAR3	2011	2012	2013	2014	2015
Placed	Quintile 1	10.3%	10.4%	12.6%	12.1%	13.2%
	Quintile 2	20.2%	16.6%	20.0%	21.4%	18.6%
	Quintile 3	24.0%	21.9%	25.7%	25.9%	25.8%
	Quintile 4	31.5%	28.3%	32.1%	31.6%	31.3%
	Quintile 5	41.0%	37.5%	42.6%	40.3%	40.1%

P.12 Placed 18 year old applicants from Northern Ireland by POLAR3 quintile: 1 day after A level results day

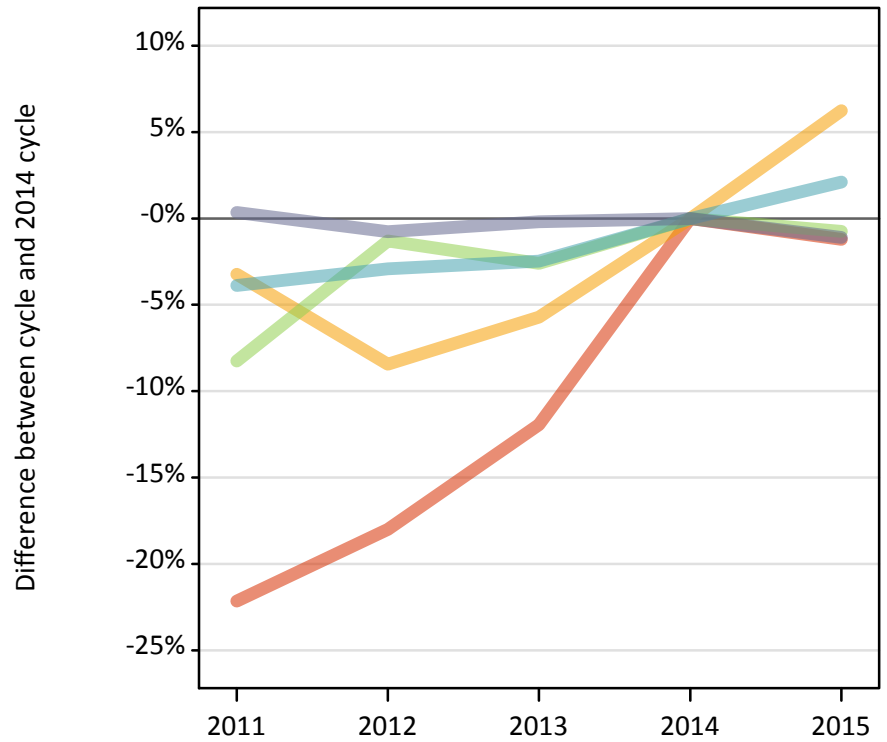
Placed 18 year old applicants: entry rate (indexed to 100 = Quintile 1)

Applicant Status	POLAR3	2011	2012	2013	2014	2015
Placed	Quintile 1	100	100	100	100	100
	Quintile 2	196	160	159	176	140
	Quintile 3	232	210	204	213	195
	Quintile 4	304	272	255	261	236
	Quintile 5	396	360	339	332	303

P.13 Placed 18 year old applicants from Scotland by POLAR3 quintile: 1 day after A level results day

Placed 18 year old applicants: change relative to 2014 cycle totals

- Quintile 1
- Quintile 2
- Quintile 3
- Quintile 4
- Quintile 5



P.14 Placed 18 year old applicants from Scotland by POLAR3 quintile: 1 day after A level results day

Applicant Status	POLAR3	2011	2012	2013	2014	2015
Placed	Quintile 1	450	470	510	580	570
	Quintile 2	1,320	1,250	1,290	1,360	1,450
	Quintile 3	1,980	2,130	2,100	2,160	2,140
	Quintile 4	3,190	3,220	3,240	3,320	3,390
	Quintile 5	6,690	6,620	6,650	6,670	6,590

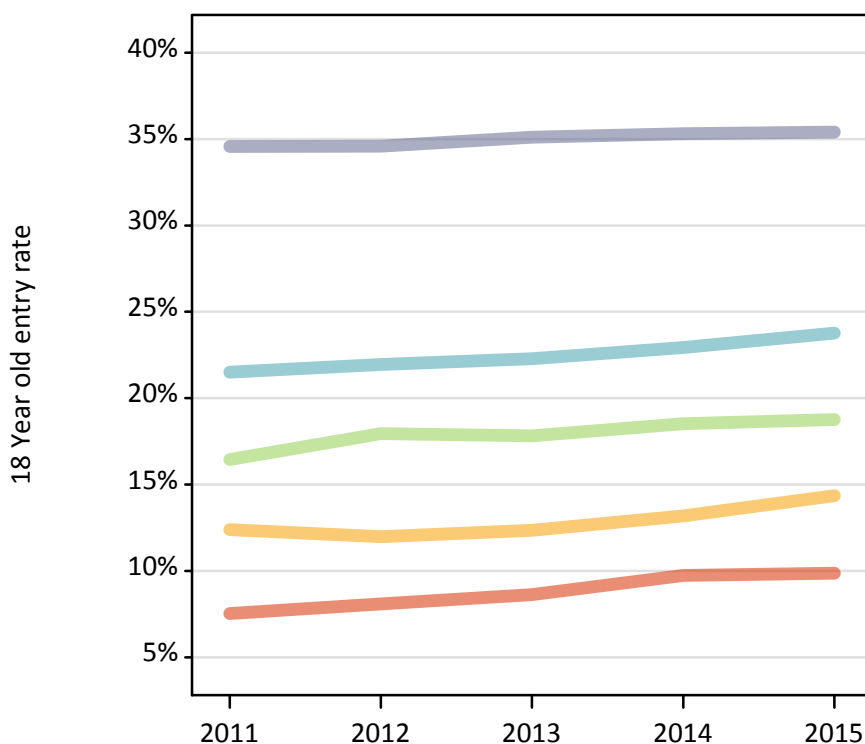
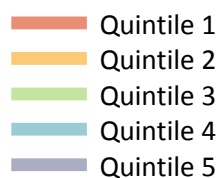
P.15 Placed 18 year old applicants from Scotland by POLAR3 quintile: 1 day after A level results day

Placed 18 year old applicants: change relative to 2014 cycle totals

Applicant Status	POLAR3	2011	2012	2013	2014	2015
Placed	Quintile 1	-22%	-18%	-12%	0%	-1%
	Quintile 2	-3%	-8%	-6%	0%	6%
	Quintile 3	-8%	-1%	-3%	0%	-1%
	Quintile 4	-4%	-3%	-2%	0%	2%
	Quintile 5	0%	-1%	-0%	0%	-1%

P.16 Placed 18 year old applicants from Scotland by POLAR3 quintile: 1 day after A level results day

Placed 18 year old applicants: entry rate



P.17 Placed 18 year old applicants from Scotland by POLAR3 quintile: 1 day after A level results day

Placed 18 year old applicants: entry rate

Applicant Status	POLAR3	2011	2012	2013	2014	2015
Placed	Quintile 1	7.5%	8.1%	8.6%	9.7%	9.9%
	Quintile 2	12.4%	12.0%	12.3%	13.2%	14.4%
	Quintile 3	16.4%	17.9%	17.8%	18.5%	18.8%
	Quintile 4	21.5%	22.0%	22.3%	22.9%	23.8%
	Quintile 5	34.6%	34.6%	35.1%	35.3%	35.4%

P.18 Placed 18 year old applicants from Scotland by POLAR3 quintile: 1 day after A level results day

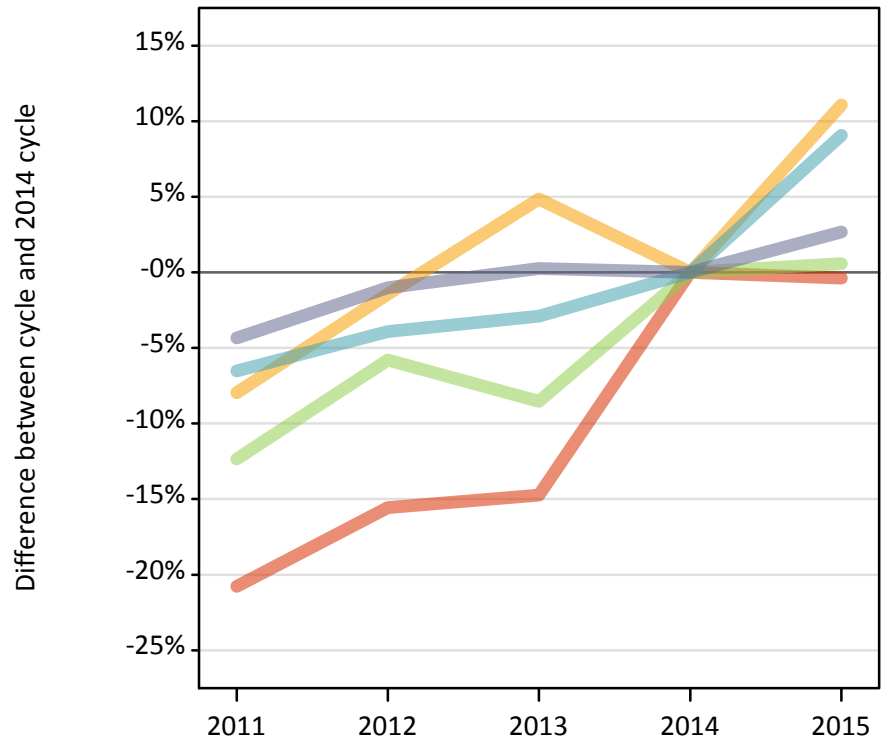
Placed 18 year old applicants: entry rate (indexed to 100 = Quintile 1)

Applicant Status	POLAR3	2011	2012	2013	2014	2015
Placed	Quintile 1	100	100	100	100	100
	Quintile 2	164	148	143	135	145
	Quintile 3	218	222	207	190	190
	Quintile 4	285	271	258	235	241
	Quintile 5	459	427	407	363	359

P.19 Placed 18 year old applicants from Wales by POLAR3 quintile: 1 day after A level results day

Placed 18 year old applicants: change relative to 2014 cycle totals

- Quintile 1
- Quintile 2
- Quintile 3
- Quintile 4
- Quintile 5



P.20 Placed 18 year old applicants from Wales by POLAR3 quintile: 1 day after A level results day

Applicant Status	POLAR3	2011	2012	2013	2014	2015
Placed	Quintile 1	1,050	1,120	1,130	1,320	1,320
	Quintile 2	1,600	1,710	1,820	1,730	1,930
	Quintile 3	1,380	1,480	1,440	1,570	1,580
	Quintile 4	1,870	1,920	1,940	2,000	2,180
	Quintile 5	2,290	2,370	2,400	2,400	2,460

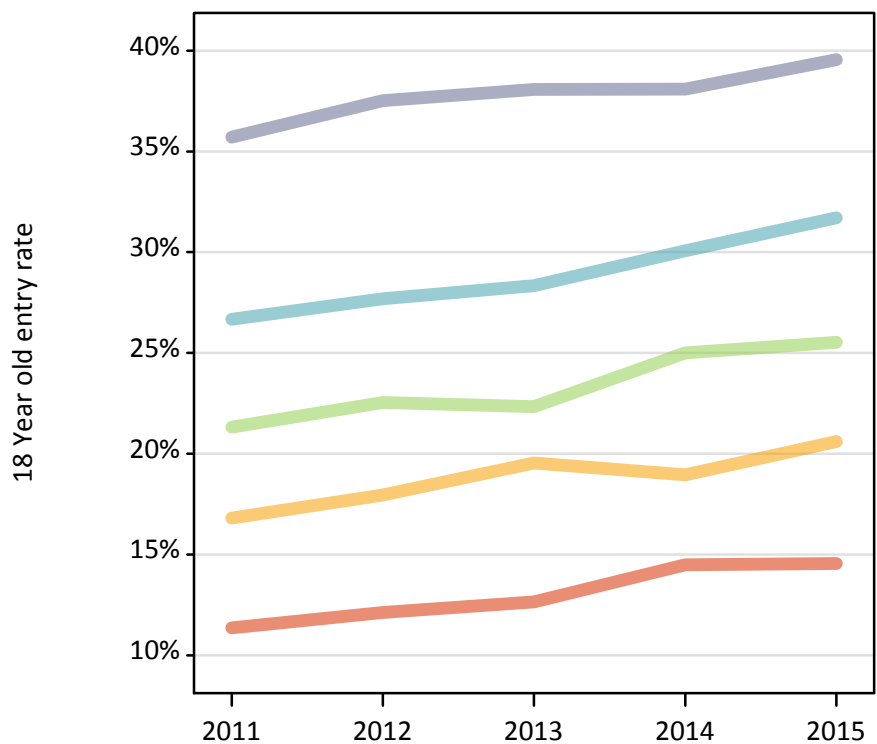
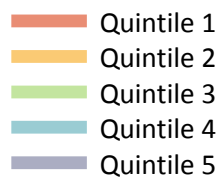
P.21 Placed 18 year old applicants from Wales by POLAR3 quintile: 1 day after A level results day

Placed 18 year old applicants: change relative to 2014 cycle totals

Applicant Status	POLAR3	2011	2012	2013	2014	2015
Placed	Quintile 1	-21%	-16%	-15%	0%	-0%
	Quintile 2	-8%	-1%	5%	0%	11%
	Quintile 3	-12%	-6%	-9%	0%	1%
	Quintile 4	-7%	-4%	-3%	0%	9%
	Quintile 5	-4%	-1%	0%	0%	3%

P.22 Placed 18 year old applicants from Wales by POLAR3 quintile: 1 day after A level results day

Placed 18 year old applicants: entry rate



P.23 Placed 18 year old applicants from Wales by POLAR3 quintile: 1 day after A level results day

Placed 18 year old applicants: entry rate

Applicant Status	POLAR3	2011	2012	2013	2014	2015
Placed	Quintile 1	11.4%	12.1%	12.6%	14.5%	14.5%
	Quintile 2	16.8%	18.0%	19.5%	19.0%	20.6%
	Quintile 3	21.3%	22.5%	22.3%	25.0%	25.5%
	Quintile 4	26.7%	27.7%	28.3%	30.1%	31.7%
	Quintile 5	35.7%	37.5%	38.1%	38.1%	39.6%

P.24 Placed 18 year old applicants from Wales by POLAR3 quintile: 1 day after A level results day

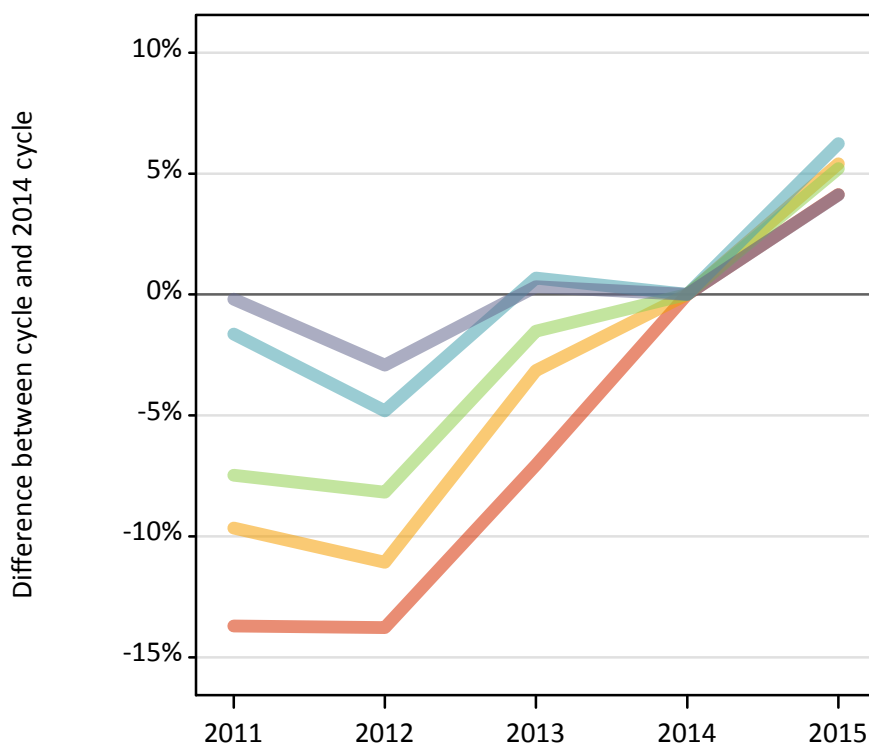
Placed 18 year old applicants: entry rate (indexed to 100 = Quintile 1)

Applicant Status	POLAR3	2011	2012	2013	2014	2015
Placed	Quintile 1	100	100	100	100	100
	Quintile 2	148	148	155	131	142
	Quintile 3	188	186	177	173	175
	Quintile 4	235	228	224	208	218
	Quintile 5	314	310	301	263	272

P.25 Placed 18 year old applicants from the UK by POLAR3 quintile: 1 day after A level results day

Placed 18 year old applicants: change relative to 2014 cycle totals

- Quintile 1
- Quintile 2
- Quintile 3
- Quintile 4
- Quintile 5



P.26 Placed 18 year old applicants from the UK by POLAR3 quintile: 1 day after A level results day

Applicant Status	POLAR3	2011	2012	2013	2014	2015
Placed	Quintile 1	18,020	18,000	19,410	20,880	21,740
	Quintile 2	27,010	26,590	28,960	29,900	31,510
	Quintile 3	34,620	34,350	36,840	37,410	39,360
	Quintile 4	45,010	43,560	46,070	45,760	48,620
	Quintile 5	62,970	61,250	63,300	63,100	65,700

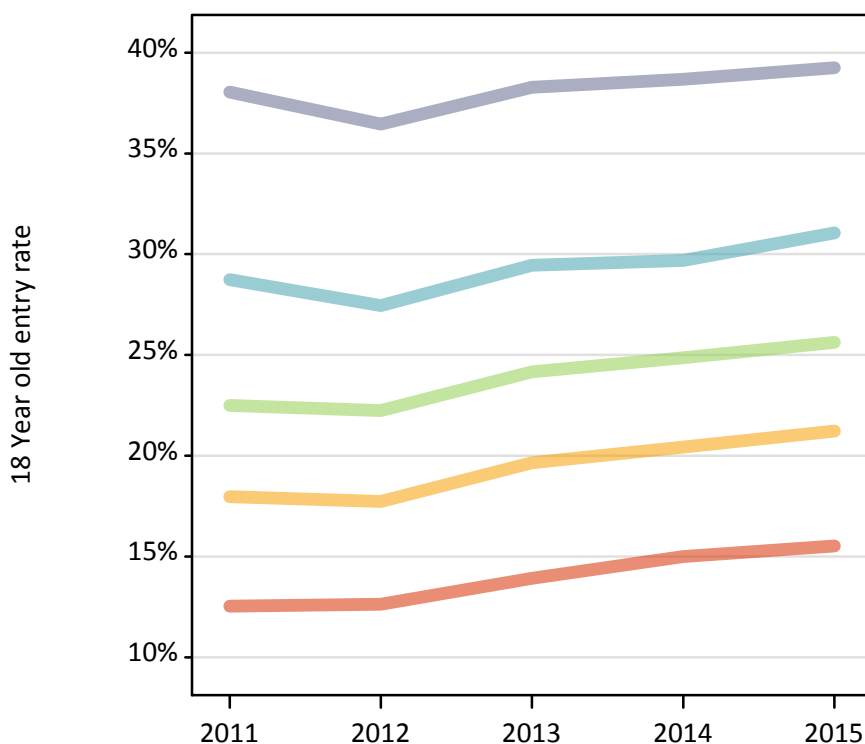
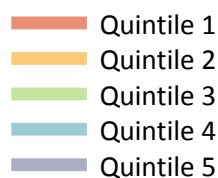
P.27 Placed 18 year old applicants from the UK by POLAR3 quintile: 1 day after A level results day

Placed 18 year old applicants: change relative to 2014 cycle totals

Applicant Status	POLAR3	2011	2012	2013	2014	2015
Placed	Quintile 1	-14%	-14%	-7%	0%	4%
	Quintile 2	-10%	-11%	-3%	0%	5%
	Quintile 3	-7%	-8%	-2%	0%	5%
	Quintile 4	-2%	-5%	1%	0%	6%
	Quintile 5	-0%	-3%	0%	0%	4%

P.28 Placed 18 year old applicants from the UK by POLAR3 quintile: 1 day after A level results day

Placed 18 year old applicants: entry rate



P.29 Placed 18 year old applicants from the UK by POLAR3 quintile: 1 day after A level results day

Placed 18 year old applicants: entry rate

Applicant Status	POLAR3	2011	2012	2013	2014	2015
Placed	Quintile 1	12.5%	12.6%	13.9%	15.0%	15.5%
	Quintile 2	18.0%	17.7%	19.7%	20.4%	21.2%
	Quintile 3	22.5%	22.2%	24.2%	24.9%	25.6%
	Quintile 4	28.7%	27.4%	29.5%	29.7%	31.1%
	Quintile 5	38.0%	36.5%	38.3%	38.7%	39.2%

P.30 Placed 18 year old applicants from the UK by POLAR3 quintile: 1 day after A level results day

Placed 18 year old applicants: entry rate (indexed to 100 = Quintile 1)

Applicant Status	POLAR3	2011	2012	2013	2014	2015
Placed	Quintile 1	100	100	100	100	100
	Quintile 2	143	140	141	136	137
	Quintile 3	179	176	173	166	165
	Quintile 4	229	217	212	198	200
	Quintile 5	304	289	275	258	253