

## N39 Norwich University of the Arts

**Cycle years:** 2014 - 2019

**Cycle Reference Point:** End of Cycle

**Applicant coverage:** UK domiciled

**Reporting groups:** Sex, POLAR4, ethnic group

**Applicant statistics:** June deadline applicants, placed June deadline applicants, all placed applicants, June deadline applicants per 10,000 population, placed June deadline applicants per 10,000 population, all placed applicants per 10,000 population

**Application statistics:** June deadline applications, offers, offer rate, average offer rate, percentage point difference between offer rate and average offer rate, contribution of group to the average offer rate

**Non-disclosure controls:** To avoid the disclosure of information about any individual the following measures are taken

- Applicants, placed applicants, applications and offers are rounded to the nearest 5.
- Applicants/placed applicants per 10,000 population figures are reported as 0 if the applicant/placed applicant figures are rounded to 0.
- All statistics related to the offer rate are not reported when the number of applications for a group is less than 10. The percentage point difference between the offer rate and the average offer rate is not reported when the number of applications for a group is less than 50.
- Offer rates are reported as 0% if there are fewer than 5 offers, and 100% if the number of offers is within 5 of the number of applications. When the offer rate is reported as 0% or 100%, it is reported in italics.

### Contents:

18 year old applicants:	P.1
18 year old applications:	P.2
18 year old applicants by sex:	P.3
18 year old applications by sex:	P.4
18 year old applicants by POLAR4 quintile:	P.7
18 year old applications by POLAR4 quintile:	P.8
18 year old applicants by ethnic group:	P.11
18 year old applications by ethnic group:	P.12
Applicants (all ages):	P.15
Applications (all ages):	P.16
Applicants (all ages) by sex:	P.17
Applications (all ages) by sex:	P.18
Applicants (all ages) by POLAR4 quintile:	P.19
Applications (all ages) by POLAR4 quintile:	P.20
Applicants (all ages) by ethnic group:	P.21
Applications (all ages) by ethnic group:	P.22

## P.1 18 year old applicants

Statistic	2014	2015	2016	2017	2018	2019
June deadline applicants	1,210	1,320	1,435	1,350	1,300	1,365
Placed June deadline applicants	300	300	335	355	380	400
All placed applicants	315	310	340	370	390	410
June deadline applicants per 10,000 population	16.1	17.2	19.2	18.2	18.0	19.3
Placed June deadline applicants per 10,000	4.0	3.9	4.4	4.8	5.2	5.7
All placed applicants per 10,000 population	4.2	4.1	4.5	5.0	5.4	5.8

## P.2 18 year old applications

Statistic	2014	2015	2016	2017	2018	2019
June deadline applications	1,255	1,375	1,495	1,410	1,350	1,455
Offers	745	795	920	930	950	990
Offer rate	59.5%	57.8%	61.4%	66.1%	70.6%	68.2%

### P.3 18 year old applicants by sex

Statistic	Sex	2014	2015	2016	2017	2018	2019
June deadline applicants	Men	440	445	480	475	445	475
	Women	770	875	960	875	855	890
Placed June deadline applicants	Men	105	95	130	130	150	140
	Women	195	205	205	225	230	260
All placed applicants	Men	110	100	130	135	155	145
	Women	200	210	210	235	235	270
June deadline applicants per 10,000 population	Men	11.4	11.4	12.4	12.6	12.0	13.1
	Women	21.0	23.4	26.2	24.2	24.2	25.8
Placed June deadline applicants per 10,000 population	Men	2.7	2.4	3.3	3.4	4.0	3.9
	Women	5.4	5.5	5.6	6.3	6.5	7.6
All placed applicants per 10,000 population	Men	2.9	2.5	3.3	3.5	4.2	4.0
	Women	5.5	5.7	5.8	6.6	6.7	7.8

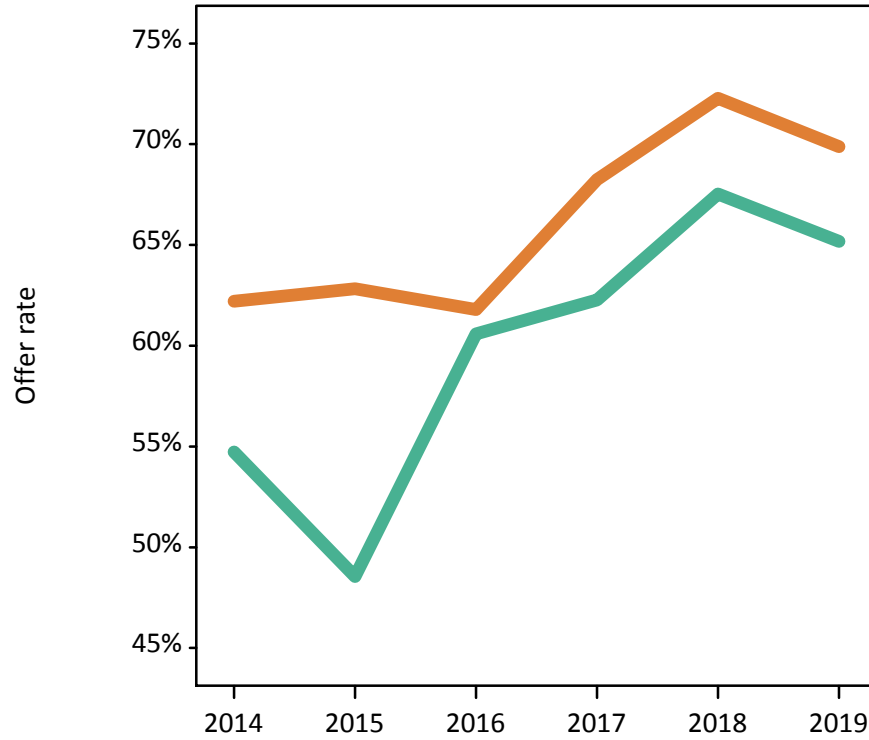
### P.4 18 year old applications by sex

Statistic	Sex	2014	2015	2016	2017	2018	2019
June deadline applications	Men	455	480	505	500	470	515
	Women	800	895	990	905	880	935
Offers	Men	250	235	305	310	315	335
	Women	495	560	615	620	635	655
Offer rate	Men	54.7%	48.5%	60.6%	62.3%	67.5%	65.2%
	Women	62.2%	62.8%	61.8%	68.2%	72.3%	69.9%
Average offer rate	Men	56.7%	53.7%	60.4%	64.4%	69.2%	66.3%
	Women	61.1%	60.0%	61.9%	67.1%	71.4%	69.3%
Percentage point difference between offer rate and average offer rate	Men	-2.0	-5.2	0.2	-2.1	-1.6	-1.1
	Women	1.1	2.8	-0.1	1.2	0.9	0.6
Contribution of group to the average offer rate	Men	0.475	0.472	0.473	0.477	0.507	0.509
	Women	0.701	0.716	0.732	0.711	0.738	0.729

### P.5 18 year old offer rate by sex

Note: The line for a group is not plotted when that group made fewer than 10 applications in any of the years from 2014-2019.

Men  
Women



### P.6 Percentage point difference between 18 year old offer rate and average offer rate by sex

Note: The line for a group is not plotted when that group made fewer than 50 applications in any of the years from 2014-2019.

Men  
Women



## P.7 18 year old applicants by POLAR4 quintile

Statistic	POLAR4 quintile	2014	2015	2016	2017	2018	2019
June deadline applicants	Quintile 1	175	170	190	195	190	170
	Quintile 2	240	255	305	260	235	230
	Quintile 3	240	285	305	280	270	300
	Quintile 4	265	315	335	290	295	320
	Quintile 5	285	290	300	315	310	340
Placed June deadline applicants	Quintile 1	55	35	35	60	75	60
	Quintile 2	70	60	85	85	75	75
	Quintile 3	65	65	75	70	85	85
	Quintile 4	60	70	80	75	75	85
	Quintile 5	55	65	55	65	65	90
All placed applicants	Quintile 1	55	35	35	65	75	65
	Quintile 2	70	65	85	85	80	75
	Quintile 3	65	70	75	75	85	90
	Quintile 4	65	75	80	80	80	85
	Quintile 5	55	65	60	70	70	95
June deadline applicants per 10,000 population	Quintile 1	12.5	12.1	14.0	14.6	14.5	13.3
	Quintile 2	16.6	17.5	21.6	18.7	17.2	17.3
	Quintile 3	16.5	19.0	20.7	19.3	19.1	21.6
	Quintile 4	17.4	20.5	21.8	19.3	19.9	22.1
	Quintile 5	16.9	16.6	17.5	18.4	18.4	20.4
Placed June deadline applicants per 10,000 population	Quintile 1	3.8	2.5	2.6	4.6	5.8	4.8
	Quintile 2	4.9	4.2	6.0	6.0	5.6	5.5
	Quintile 3	4.4	4.4	5.0	4.8	6.0	6.2
	Quintile 4	4.0	4.6	5.3	4.8	5.1	6.0
	Quintile 5	3.1	3.7	3.2	3.9	4.0	5.4
All placed applicants per 10,000 population	Quintile 1	4.0	2.6	2.7	4.8	5.9	5.0
	Quintile 2	4.9	4.4	6.1	6.2	6.0	5.7
	Quintile 3	4.6	4.5	5.1	5.0	6.0	6.4
	Quintile 4	4.3	5.0	5.4	5.2	5.3	6.0
	Quintile 5	3.2	3.8	3.4	4.0	4.0	5.6

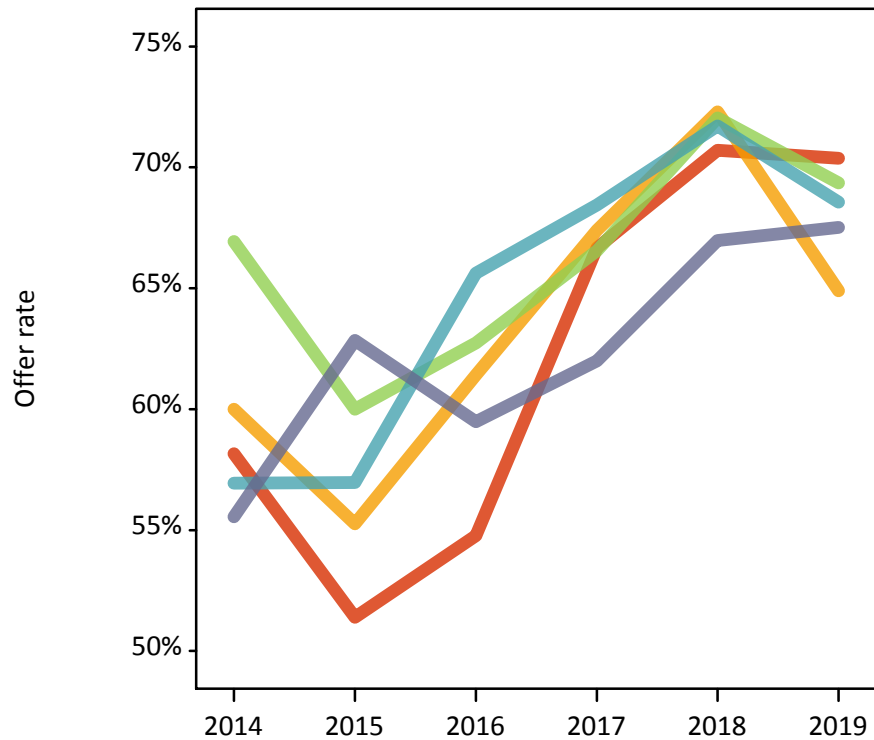
## P.8 18 year old applications by POLAR4 quintile

Statistic	POLAR4 quintile	2014	2015	2016	2017	2018	2019
June deadline applications	Quintile 1	185	180	200	210	200	190
	Quintile 2	255	265	325	275	250	245
	Quintile 3	250	300	315	295	280	325
	Quintile 4	275	330	350	300	295	335
	Quintile 5	290	295	305	320	320	350
Offers	Quintile 1	105	90	110	140	140	135
	Quintile 2	155	145	200	185	180	160
	Quintile 3	170	180	195	195	200	225
	Quintile 4	155	190	230	205	215	230
	Quintile 5	160	185	180	200	215	235
Offer rate	Quintile 1	58.2%	51.4%	54.8%	66.7%	70.7%	70.4%
	Quintile 2	60.0%	55.3%	61.4%	67.4%	72.3%	64.9%
	Quintile 3	66.9%	60.0%	62.7%	66.6%	72.0%	69.3%
	Quintile 4	56.9%	57.0%	65.6%	68.4%	71.7%	68.6%
	Quintile 5	55.6%	62.8%	59.5%	62.0%	67.0%	67.5%
Average offer rate	Quintile 1	60.3%	55.6%	61.7%	65.8%	70.6%	67.9%
	Quintile 2	59.2%	55.9%	60.4%	66.4%	70.3%	66.4%
	Quintile 3	59.8%	57.8%	60.9%	65.8%	70.1%	69.5%
	Quintile 4	59.0%	58.1%	63.3%	65.9%	71.2%	68.2%
	Quintile 5	59.1%	60.6%	60.6%	66.4%	70.7%	68.1%
Percentage point difference between offer rate and average offer rate	Quintile 1	-2.1	-4.2	-6.9	0.8	0.1	2.5
	Quintile 2	0.8	-0.7	1.0	1.0	2.0	-1.5
	Quintile 3	7.1	2.2	1.8	0.8	2.0	-0.1
	Quintile 4	-2.1	-1.1	2.3	2.5	0.5	0.4
	Quintile 5	-3.6	2.2	-1.1	-4.5	-3.8	-0.5
Contribution of group to the average offer rate	Quintile 1	0.208	0.198	0.187	0.210	0.208	0.216
	Quintile 2	0.262	0.245	0.273	0.245	0.246	0.244
	Quintile 3	0.256	0.270	0.257	0.268	0.263	0.279
	Quintile 4	0.275	0.292	0.292	0.260	0.280	0.289
	Quintile 5	0.288	0.285	0.266	0.302	0.309	0.299

### P.9 18 year old offer rate by POLAR4 quintile

Note: The line for a group is not plotted when that group made fewer than 10 applications in any of the years from 2014-2019.

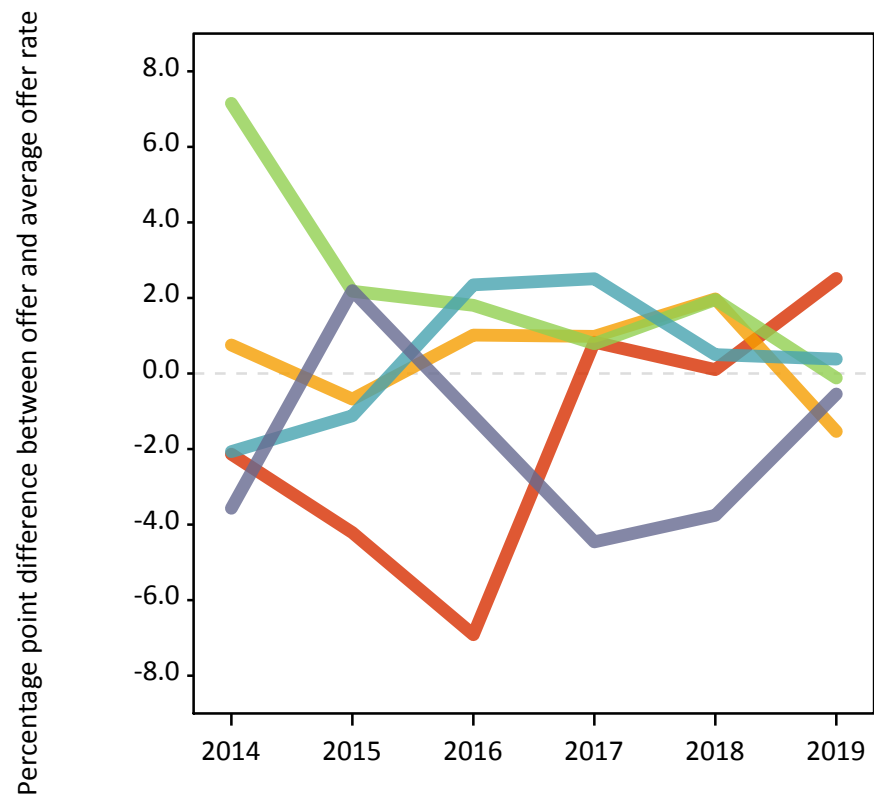
- Quintile 1
- Quintile 2
- Quintile 3
- Quintile 4
- Quintile 5



### P.10 Percentage point difference between 18 year old offer rate and average offer rate by POLAR4 quintile

Note: The line for a group is not plotted when that group made fewer than 50 applications in any of the years from 2014-2019.

- Quintile 1
- Quintile 2
- Quintile 3
- Quintile 4
- Quintile 5



## P.11 18 year old applicants by ethnic group

Statistic	Ethnic group	2014	2015	2016	2017	2018	2019
June deadline applicants	White	1,075	1,170	1,275	1,215	1,130	1,160
	Black	30	35	40	25	35	50
	Asian	30	40	35	35	50	65
	Mixed	60	60	70	55	70	65
	Other	10	15	10	15	15	15
Placed June deadline applicants	White	270	265	300	325	330	365
	Black	5	10	10	10	15	5
	Asian	10	10	5	10	15	10
	Mixed	15	15	15	15	15	15
	Other	0	0	5	0	5	5
All placed applicants	White	280	275	305	335	340	370
	Black	5	10	10	10	15	5
	Asian	10	10	5	10	20	15
	Mixed	15	15	15	15	15	15
	Other	0	0	5	0	5	5
June deadline applicants per 10,000 population	White	17.5	18.8	21.1	20.5	19.7	21.0
	Black	10.2	10.4	12.8	8.6	10.6	14.5
	Asian	4.6	5.8	4.9	4.8	6.4	8.2
	Mixed	20.2	19.1	22.6	17.8	21.6	19.5
	Other	9.7	14.5	8.0	13.6	12.1	14.3
Placed June deadline applicants per 10,000 population	White	4.4	4.2	4.9	5.5	5.8	6.6
	Black	2.0	3.1	2.9	2.5	4.0	1.5
	Asian	1.3	1.1	0.7	1.1	2.1	1.4
	Mixed	5.2	5.2	5.4	4.0	4.6	4.3
	Other	0.0	0.0	3.0	0.0	3.7	2.7
All placed applicants per 10,000 population	White	4.5	4.4	5.1	5.7	5.9	6.7
	Black	2.0	3.1	2.9	2.9	4.0	1.8
	Asian	1.5	1.1	0.7	1.2	2.5	1.7
	Mixed	5.6	5.2	5.4	4.4	4.6	4.6
	Other	0.0	0.0	3.0	0.0	4.7	2.7



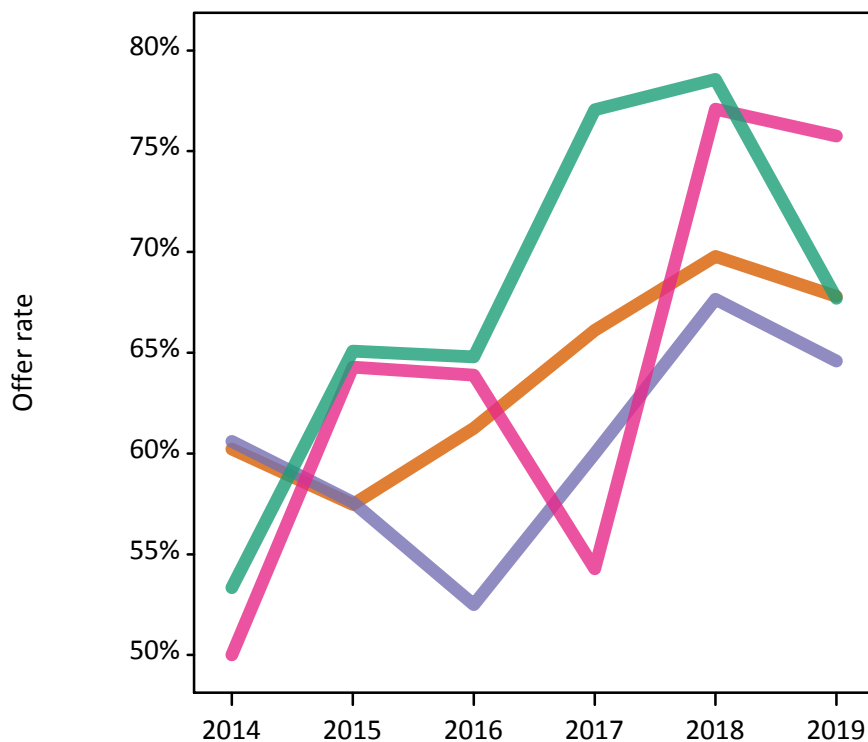
## P.12 18 year old applications by ethnic group

Statistic	Ethnic group	2014	2015	2016	2017	2018	2019
June deadline applications	White	1,115	1,220	1,335	1,265	1,180	1,245
	Black	35	35	40	30	35	50
	Asian	30	40	35	35	50	65
	Mixed	60	65	70	60	70	65
	Other	10	15	10	15	15	15
Offers	White	670	700	820	835	820	845
	Black	20	20	20	20	25	30
	Asian	15	25	25	20	35	50
	Mixed	30	40	45	45	55	45
	Other	5	5	5	10	10	10
Offer rate	White	60.2%	57.5%	61.3%	66.1%	69.8%	67.8%
	Black	60.6%	57.6%	52.5%	60.0%	67.6%	64.6%
	Asian	50.0%	64.3%	63.9%	54.3%	77.1%	75.8%
	Mixed	53.3%	65.1%	64.8%	77.0%	78.6%	67.7%
	Other	N/A	35.7%	N/A	57.1%	100.0%	68.8%
Average offer rate	White	59.5%	57.9%	61.4%	66.1%	70.6%	68.0%
	Black	61.3%	54.2%	56.7%	63.3%	68.5%	67.9%
	Asian	58.6%	56.1%	61.8%	65.8%	74.4%	70.2%
	Mixed	58.3%	59.2%	63.5%	66.2%	69.5%	69.3%
	Other	N/A	54.9%	N/A	71.8%	71.1%	68.4%
Percentage point difference between offer rate and average offer rate	White	0.7	-0.4	-0.1	-0.0	-0.8	-0.3
	Black	N/A	N/A	N/A	N/A	N/A	N/A
	Asian	N/A	N/A	N/A	N/A	N/A	5.6
	Mixed	-5.0	5.8	1.3	10.8	9.1	-1.6
	Other	N/A	N/A	N/A	N/A	N/A	N/A
Contribution of group to the average offer rate	White	0.900	0.894	0.902	0.906	0.886	0.873
	Black	0.109	0.102	0.108	0.082	0.100	0.153
	Asian	0.102	0.091	0.111	0.085	0.137	0.163
	Mixed	0.155	0.094	0.124	0.125	0.150	0.110
	Other	N/A	0.121	N/A	0.089	0.184	0.061

### P.13 18 year old offer rate by ethnic group

Note: The line for a group is not plotted when that group made fewer than 10 applications in any of the years from 2014-2019.

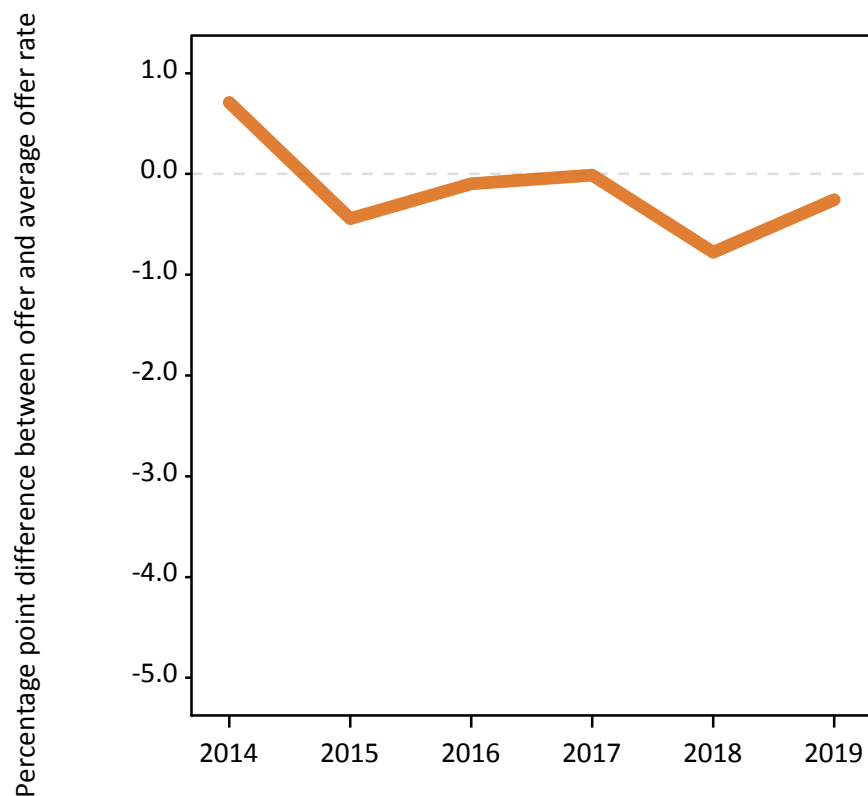
- White
- Black
- Asian
- Mixed
- Other



### P.14 Percentage point difference between 18 year old offer rate and average offer rate by ethnic group

Note: The line for a group is not plotted when that group made fewer than 50 applications in any of the years from 2014-2019.

- White
- Black
- Asian
- Mixed
- Other



### P.15 Applicants (all ages)

Statistic	2014	2015	2016	2017	2018	2019
June deadline applicants	2,465	2,605	2,810	2,530	2,430	2,475
Placed June deadline applicants	655	660	725	700	750	770
All placed applicants	685	700	745	740	790	820

### P.16 Applications (all ages)

Statistic	2014	2015	2016	2017	2018	2019
June deadline applications	2,565	2,725	2,955	2,680	2,540	2,640
Offers	1,575	1,645	1,830	1,815	1,810	1,820
Offer rate	61.4%	60.4%	62.0%	67.7%	71.4%	68.9%

### P.17 Applicants (all ages) by sex

Statistic	Sex	2014	2015	2016	2017	2018	2019
June deadline applicants	Men	980	935	975	925	860	935
	Women	1,480	1,670	1,835	1,605	1,570	1,540
Placed June deadline applicants	Men	265	255	280	265	285	310
	Women	390	405	445	435	470	465
All placed applicants	Men	280	270	285	280	295	335
	Women	405	425	460	460	490	490

### P.18 Applications (all ages) by sex

Statistic	Sex	2014	2015	2016	2017	2018	2019
June deadline applications	Men	1,035	995	1,040	990	905	1,020
	Women	1,530	1,730	1,920	1,690	1,635	1,625
Offers	Men	580	525	610	600	595	660
	Women	995	1,120	1,225	1,215	1,220	1,160
Offer rate	Men	56.1%	52.9%	58.7%	60.8%	65.6%	64.8%
	Women	65.0%	64.6%	63.7%	71.7%	74.5%	71.5%

### P.19 Applicants (all ages) by POLAR4 quintile

Statistic	POLAR4 quintile	2014	2015	2016	2017	2018	2019
June deadline applicants	Quintile 1	415	365	415	395	385	355
	Quintile 2	465	495	550	480	460	445
	Quintile 3	475	535	580	490	480	510
	Quintile 4	530	625	610	560	555	545
	Quintile 5	565	585	650	590	545	605
Placed June deadline applicants	Quintile 1	120	90	110	135	140	140
	Quintile 2	145	140	155	160	155	160
	Quintile 3	125	140	170	135	160	155
	Quintile 4	135	150	150	140	165	150
	Quintile 5	130	135	140	125	130	160
All placed applicants	Quintile 1	130	95	110	145	145	150
	Quintile 2	145	150	165	160	160	165
	Quintile 3	130	150	170	150	165	170
	Quintile 4	145	160	155	150	175	155
	Quintile 5	135	145	140	135	135	170

### P.20 Applications (all ages) by POLAR4 quintile

Statistic	POLAR4 quintile	2014	2015	2016	2017	2018	2019
June deadline applications	Quintile 1	440	385	450	440	410	390
	Quintile 2	490	525	585	510	485	490
	Quintile 3	495	555	610	520	500	545
	Quintile 4	560	655	640	585	570	565
	Quintile 5	570	600	670	610	560	630
Offers	Quintile 1	250	205	250	285	270	280
	Quintile 2	295	305	350	345	350	330
	Quintile 3	315	350	395	350	365	380
	Quintile 4	350	390	430	410	435	375
	Quintile 5	365	385	405	410	390	440
Offer rate	Quintile 1	56.8%	53.2%	55.3%	64.6%	65.5%	71.3%
	Quintile 2	59.9%	58.3%	60.0%	67.9%	72.4%	67.6%
	Quintile 3	63.2%	63.3%	64.8%	67.1%	72.5%	70.1%
	Quintile 4	62.4%	59.9%	67.5%	70.4%	76.0%	66.4%
	Quintile 5	63.6%	64.4%	60.2%	67.3%	69.0%	69.6%

## P.21 Applicants (all ages) by ethnic group

Statistic	Ethnic group	2014	2015	2016	2017	2018	2019
June deadline applicants	White	2,165	2,275	2,435	2,215	2,115	2,105
	Black	70	70	80	70	60	75
	Asian	75	95	90	95	95	105
	Mixed	115	125	155	115	125	140
	Other	15	25	30	30	20	30
Placed June deadline applicants	White	590	565	640	625	665	685
	Black	10	15	20	15	20	10
	Asian	20	25	15	20	25	20
	Mixed	30	40	40	30	30	40
	Other	5	5	5	5	5	10
All placed applicants	White	615	605	655	660	695	730
	Black	10	20	25	15	20	10
	Asian	20	25	15	25	30	25
	Mixed	30	40	40	35	35	40
	Other	5	5	5	5	5	10

## P.22 Applications (all ages) by ethnic group

Statistic	Ethnic group	2014	2015	2016	2017	2018	2019
June deadline applications	White	2,260	2,385	2,580	2,350	2,215	2,255
	Black	75	75	80	75	65	80
	Asian	80	95	95	95	95	105
	Mixed	120	130	160	120	125	150
	Other	20	25	30	30	20	30
Offers	White	1,400	1,450	1,605	1,600	1,575	1,560
	Black	45	30	45	45	45	50
	Asian	40	60	55	55	65	75
	Mixed	70	80	100	90	95	95
	Other	10	10	20	15	20	25
Offer rate	White	62.0%	60.8%	62.2%	68.1%	71.0%	69.3%
	Black	60.0%	43.8%	56.1%	58.9%	69.2%	64.1%
	Asian	53.8%	64.6%	58.1%	58.1%	70.5%	70.8%
	Mixed	57.6%	61.1%	64.6%	75.8%	76.4%	63.5%
	Other	50.0%	43.5%	64.5%	53.3%	100.0%	75.0%

## Technical Notes and Definitions

### UCAS undergraduate scheme

#### Adjustment

Adjustment allows applicants who have met and exceeded the terms of their conditional firm offer to seek and find a place at another provider whilst keeping their place at their original firm choice provider.

#### Clearing

Clearing is a route for applicants that are not placed and holding no offers to find a place on courses with vacancies.

#### Cycle year

The UCAS application cycle which runs from September to October the following year. For example the 2019 cycle runs from September 2018 through to October 2019.

#### End of cycle

The point in the cycle to which the numbers in this report refer, and the point at which the cycle is closed such that no more applications or offers can be made, and no more applicants can be placed. Numbers reported at the end of cycle exclude information on a small number of applicants who cancelled during the cycle.

#### Extra

Applicants who are unsuccessful in obtaining an offer or decline all offers may be eligible to apply through Extra, where they can apply to one further course at a time. Extra operates from 25 February until early July. It provides applicants who are eligible the possibility of obtaining an offer before exam results are published and Clearing starts.

#### June 30 deadline

The deadline for main scheme applications. Applicants who apply after this date will go directly into Clearing.

#### Record of Prior Acceptance (RPA)

RPA is an acceptance route used when a provider informs UCAS of applicants it has accepted outside of the normal application process (e.g. individuals who have applied directly to the provider).

### Reporting groups

#### Ethnic group

High level grouping of ethnic origin as declared by the applicant: 'White', 'Black', 'Asian', 'Mixed', 'Other', 'Unknown'. Applicants who declare themselves as 'Unknown' ethnic origin are not reported in these tables, but are included in the associated csv data file.

#### POLAR4 quintile

Developed by OfS, POLAR4 classifies small areas across the UK into five groups according to their level of young participation in Higher Education. Each of these groups represents around 20 per cent of young people and is ranked from Quintile 1 (areas with the lowest young participation rates, considered as the most disadvantaged) to Quintile 5 (highest young participation rates, considered most advantaged). POLAR4 is based on the participation rates of young people between between 2009-10 and 2013-14 if they entered higher education aged 18, or between 2010-11 and 2014-15 if they entered aged 19, therefore is most suitable for applicants aged 19 and under. These groups are assigned using the postcode declared by the applicant at the time of their application. If a UK postcode is invalid, considered unsafe for measurement or there is no link to Census geography possible then the applicant is not assigned to a quintile. Applicants with no POLAR4 quintile are not reported.

#### Sex

Sex as declared by the applicant.

### **SIMD 2016 quintile**

Scottish index of multiple deprivation (SIMD) identifies small area concentrations of multiple deprivation across all of Scotland, providing a relative measure of deprivation amongst 6505 small areas (data zones) based on 7 socio-economic domains. These small areas are classified into five groups ranked from Quintile 1 (considered the most deprived) to Quintile 5 (considered least deprived), with equal populations in each quintile. Quintiles are assigned using the postcode declared by the applicant, applicants declaring invalid postcodes are classified as 'Not assigned' and are not reported.

SIMD is only defined for applicants domiciled in Scotland, therefore any applicants domiciled outside of Scotland cannot be assigned to an SIMD quintile and so are not reported for this measure.

SIMD is only reported for providers in Scotland. Application and entry rates by SIMD are reported in the 2019 End of Cycle Report and the 2019 cycle January deadline application rate report.

### **Statistics reported in the tables**

#### **All placed applicants**

The number of applicants placed for entry into higher education at the provider through one of their choices, including any choices made through Extra, or via Adjustment, Clearing or RPA.

#### **All placed applicants per 10,000 population**

The number of total UK domiciled 18 year old placed applicants for entry into higher education at the provider divided by the number of UK 18 year olds in the population, multiplied by 10,000. This gives the number of 18 year olds, for every 10,000 in the population, that were placed at the provider through one of their choices, including any choices made through Extra, or via Adjustment, Clearing or RPA. It is an alternative way of expressing the entry rate to a provider. By referencing the underlying population this statistic shows how the number of placed applicants is changing in relation to the available pool of potential applicants and so gives the chance that somebody from the group will be placed at a provider.

This statistic is only reported for 18 year olds.

#### **Average offer rate**

The offer rate that you might expect if the predicted grades and subject choice of applicants were the only factors that influenced whether an applicant was made an offer by the provider. The average offer rate is calculated by dividing applicants according to their specific combination of grades (for A levels the best three predicted grades are used, for BTECs, International Baccalaureate and Scottish Highers and Advanced Highers, predicted grades along with any grades already achieved upon applying are used) and subject choice. For each combination the number of main scheme offers is divided by the number of main scheme applications, to give an overall offer rate. This is then multiplied by the number of applications made by the group for which the average offer rate is being calculated (for example POLAR4 quintile 1), to give an average number of offers for that group. These average number of offers are then added together across all combinations of predicted grade and subject and divided by the number of main scheme applications from the group to give the average offer rate.

The average offer rate does not attempt to control for any other factors that may play a part in the decision to make an offer, such as the subject of the qualifications studied, their relevance to a course, or the grade in each subject; higher numbers of A levels being studied; the exact profile of grades predicted; personal statements; teacher references; interviews; or any other criteria (such as work experience or portfolios) that may be part of the admissions decision.

This statistic is only reported for 18 year olds.



### Contribution of group to the average offer rate

The way in which the average offer rate is defined means that the pattern of application and offers of a group (for example POLAR4 quintile 1) will always contribute, in part, to the average offer rate for that group. When this contribution is large, the average offer rate will mainly reflect the patterns for the group, meaning that the value of the average offer rate will be similar to the offer rate, the percentage point difference statistic will be small, and any real difference between the offer rate and what might be expected given the predicted grades and subject choices of the applicants will be difficult to detect.

Values of the contribution of group to the average offer rate range between 0 and 1. The closer the value is to 1 the greater the contribution a group makes to its own average offer rate.

This statistic is only reported for 18 year olds.

### Placed June deadline applicants

An applicant who has been placed for entry into higher education at the provider through a June deadline application.

### Placed June deadline applicants per 10,000 population

The number of UK domiciled 18 year old placed June deadline applicants at the provider divided by the number of UK 18 year olds in the population, multiplied by 10,000. This gives the number of 18 year olds, for every 10,000 in the population, that were placed at the provider through one of their June deadline applications. It is an alternative way of expressing the entry rate to a provider, but for placed June deadline applicants only. By referencing the underlying population this statistic shows how the number of placed June deadline applicants is changing in relation to the available pool of potential 18 year old applicants and so gives the chance that somebody from the group will be placed at a provider through a June deadline application.

This statistic is only reported for 18 year olds.

### June deadline applications

An application (or choice) to a course in higher education to the provider that is made by the June 30 deadline. Each applicant can make up to five choices this way. The number of June deadline applications does not include choices made through the following routes: Clearing, Extra, Adjustment and RPAs. Applications made to October deadline courses received after the October deadline are not included in these statistics.

### June deadline applicants

The number of applicants that made at least one application to the provider by the June 30 deadline.

### June deadline applicants per 10,000 population

The number of UK domiciled 18 year old June deadline applicants to the provider divided by the number of UK 18 year olds in the population, multiplied by 10,000. This gives the number of 18 year olds, for every 10,000 in the population, who applied by the June 30 deadline. It is equivalent to the application rate. By referencing the underlying population this statistic shows how the number of June deadline applicants is changing in relation to the available pool of potential 18 year old applicants and so gives the chance that somebody from the group will apply to a provider by the June 30 deadline.

This statistic is only reported for 18 year olds.

### Offers

An offer is defined as a provider's decision in response to an application to offer a place to an applicant, often subject to the applicant satisfying academic and/or other criteria, via a June deadline application (i.e. does not cover choices made through the following routes: Clearing, Extra, Adjustment and RPAs).

### Offer rate

The number of offers made divided by the number of June deadline applications. This gives the proportion of all June deadline applications to the provider that received an offer.

### Percentage point difference between offer rate and average offer rate

The offer rate minus the average offer rate.

The percentage point difference can be compared to the expected range of statistical variation resulting from the calculation of the average offer rate using the Average Offer Rate Lookup Table. Where the value of the percentage point difference lies outside of this range, the percentage point difference may be considered to represent a real difference between the offer rate and the average offer rate.

### Other definitions

#### Age

This analysis uses country-specific age definitions that align with the cut off points for school and college cohorts within the different administrations of the UK. For England and Wales, ages are defined on the 31 August, for Northern Ireland on the 1 July and for Scotland on the 28 February the following year. Defining ages in this way matches the assignment of children to school cohorts. For applicants outside of the UK a cohort cut off of 31 August has been used. Numbers for applicants aged 17 and under are included in the tables that report numbers for all age groups. Providers in Scotland typically receive a higher proportion of applicants aged 17 and under compared to providers elsewhere in the UK.

#### Provider

A higher education provider - a university or college.

#### UK domiciled

Declared area of permanent residence within England, Northern Ireland, Scotland and Wales. Applicants from the Channel Islands and Isle of Man are not included.