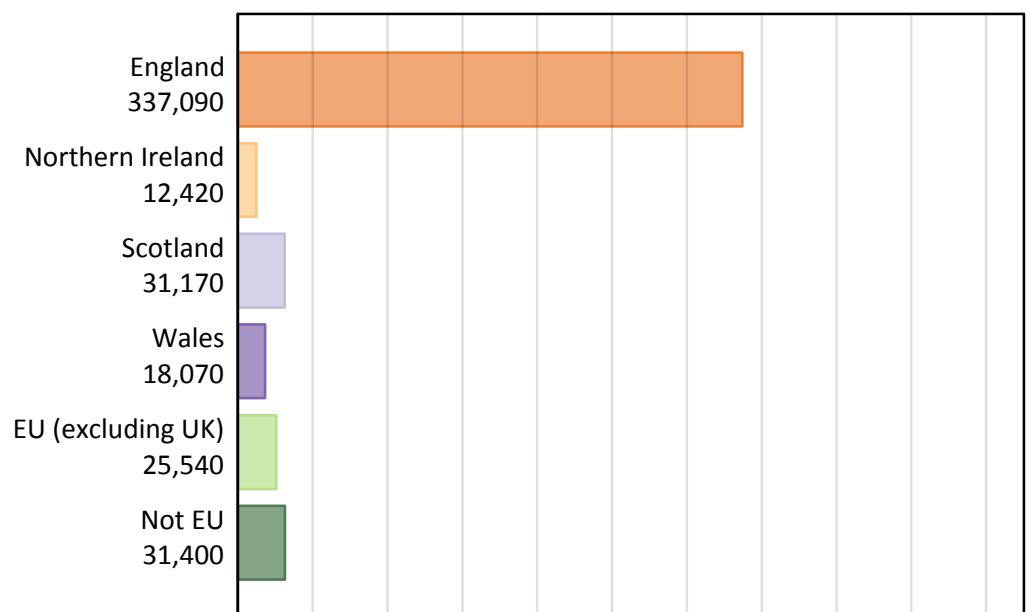


Analysis at 00:05 on Monday 17 August 2015 (4 days after A level results day)

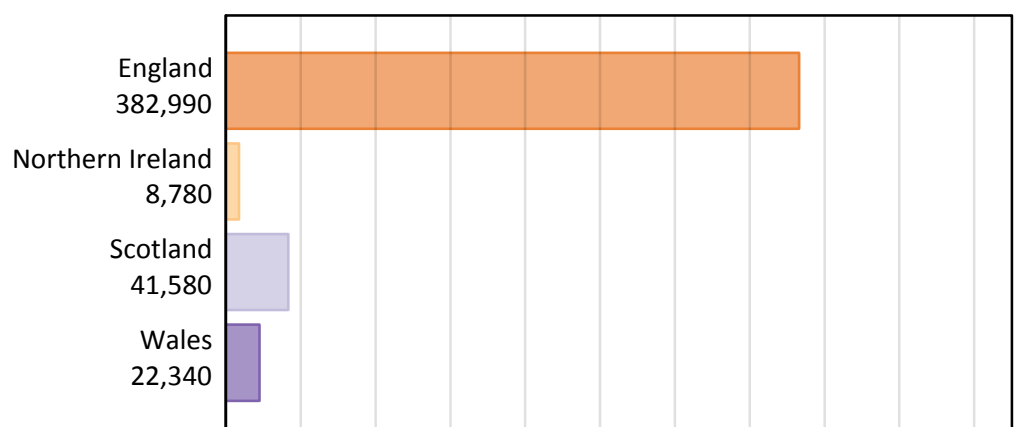
B.1 Placed applicants by country of provider and domicile, 2015 cycle

Domicile of applicant	Country of provider				
	England	Northern Ireland	Scotland	Wales	UK
England	322,270	540	4,400	9,880	337,090
Northern Ireland	3,570	7,690	1,010	150	12,420
Scotland	1,520	20	29,590	40	31,170
Wales	7,830	10	110	10,120	18,070
EU (excluding UK)	20,040	380	4,010	1,110	25,540
Not EU	27,760	140	2,460	1,040	31,400
All	382,990	8,780	41,580	22,340	455,700

B.2 Placed applicants by domicile group

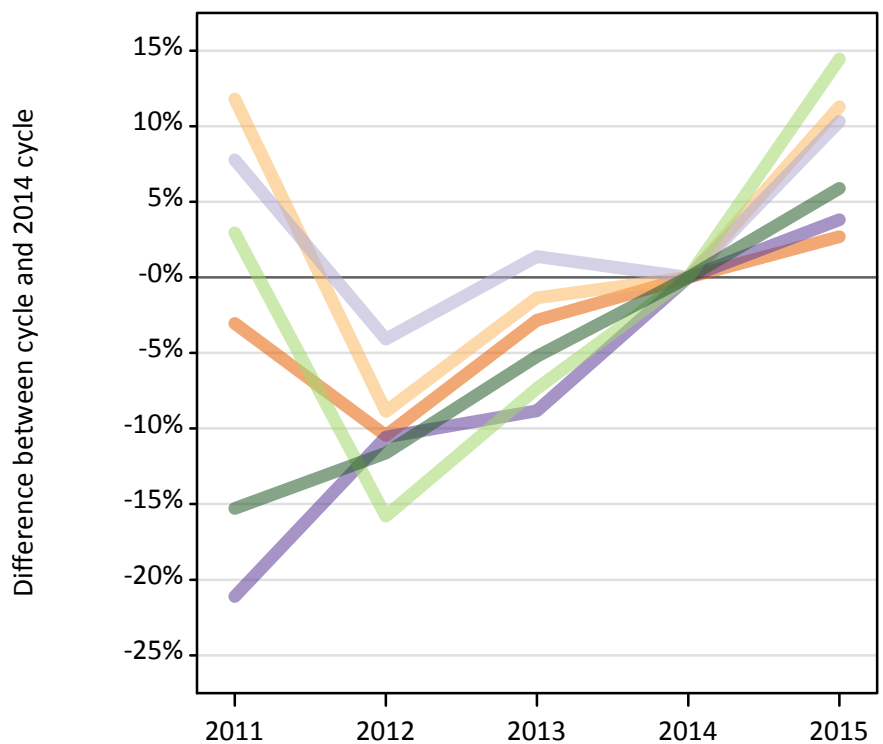
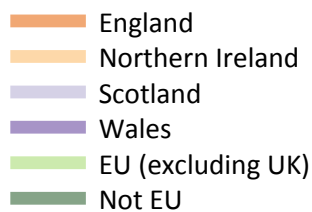


B.3 Placed applicants by country of provider



B.4 Placed applicants at 4 days after A level results day: providers in England

Selected applicant domiciles: difference between cycle and 2014 cycle (at 4 days after A level results day)



B.5 Placed applicants at 4 days after A level results day: providers in England

Placed applicants by domicile (at 4 days after A level results day)

Domicile of applicant	2011	2012	2013	2014	2015
England	304,300	281,020	304,950	313,840	322,270
Northern Ireland	3,580	2,920	3,160	3,200	3,570
Scotland	1,480	1,320	1,390	1,380	1,520
Wales	5,950	6,740	6,880	7,540	7,830
EU (excluding UK)	18,030	14,750	16,230	17,510	20,040
Not EU	22,210	23,170	24,850	26,220	27,760

B.6 Placed applicants at 4 days after A level results day: providers in England

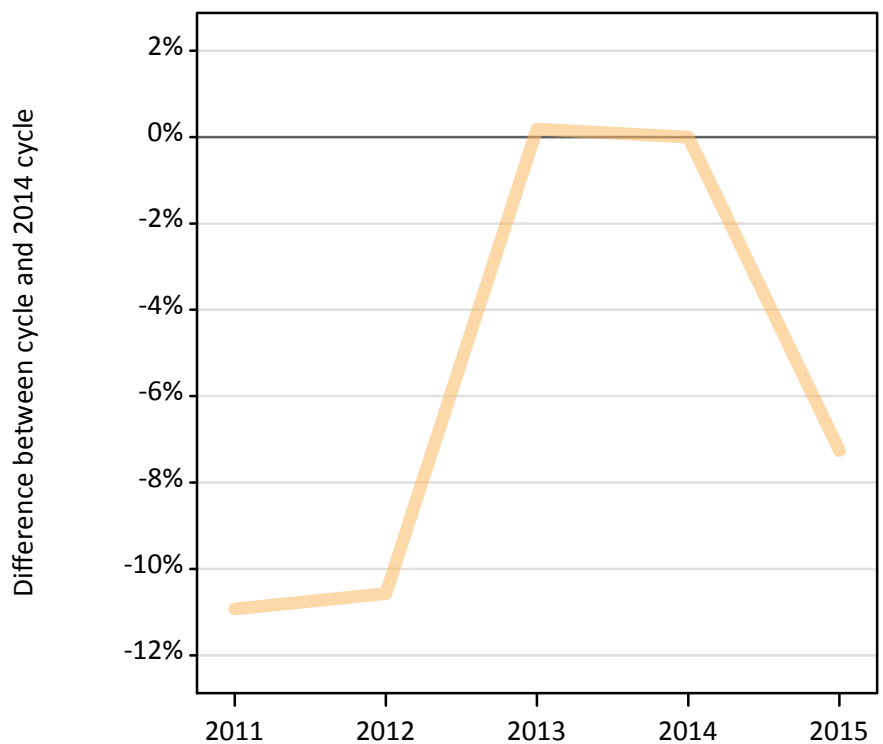
Selected applicant domiciles: difference between cycle and 2014 cycle (at 4 days after A level results day)

Domicile of applicant	2011	2012	2013	2014	2015
England	-3%	-10%	-3%	0%	3%
Northern Ireland	12%	-9%	-1%	0%	11%
Scotland	8%	-4%	1%	0%	10%
Wales	-21%	-11%	-9%	0%	4%
EU (excluding UK)	3%	-16%	-7%	0%	14%
Not EU	-15%	-12%	-5%	0%	6%

B.7 Placed applicants at 4 days after A level results day: providers in Northern Ireland

Selected applicant domiciles: difference between cycle and 2014 cycle (at 4 days after A level results day)

— Northern Ireland



B.8 Placed applicants at 4 days after A level results day: providers in Northern Ireland

Placed applicants by domicile (at 4 days after A level results day)

Domicile of applicant	2011	2012	2013	2014	2015
England	220	220	230	330	540
Northern Ireland	7,390	7,420	8,310	8,290	7,690
Scotland	20	30	10	20	20
Wales	10	0	0	10	10
EU (excluding UK)	420	410	430	460	380
Not EU	110	150	170	170	140

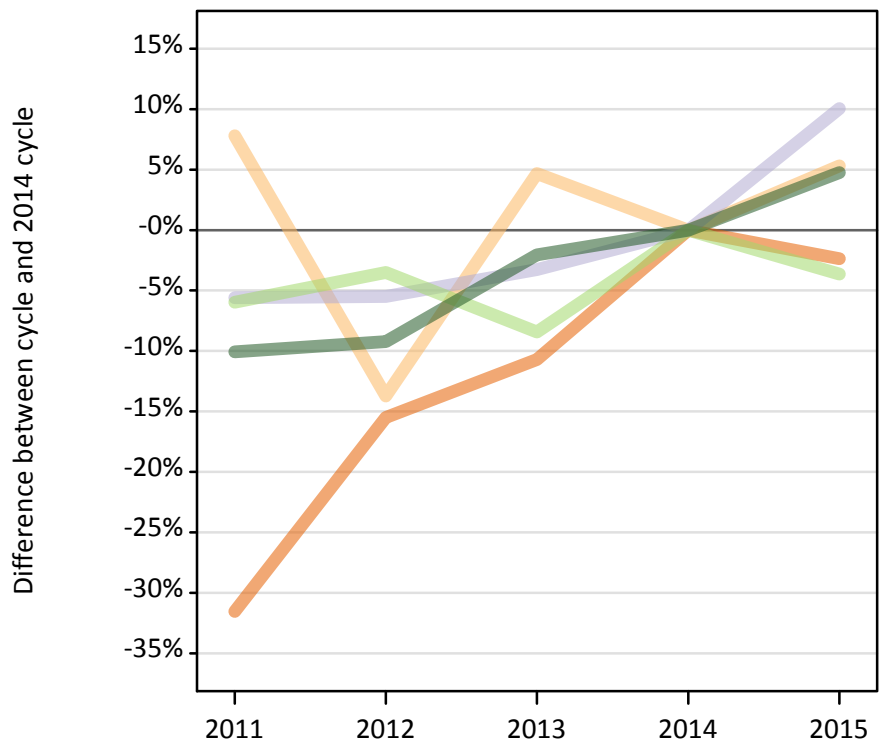
B.9 Placed applicants at 4 days after A level results day: providers in Northern Ireland

Selected applicant domiciles: difference between cycle and 2014 cycle (at 4 days after A level results day)

Domicile of applicant	2011	2012	2013	2014	2015
Northern Ireland	-11%	-11%	0%	0%	-7%

B.10 Placed applicants at 4 days after A level results day: providers in Scotland

Selected applicant domiciles: difference between cycle and 2014 cycle (at 4 days after A level results day)



B.11 Placed applicants at 4 days after A level results day: providers in Scotland

Placed applicants by domicile (at 4 days after A level results day)

Domicile of applicant	2011	2012	2013	2014	2015
England	3,090	3,810	4,020	4,510	4,400
Northern Ireland	1,040	830	1,010	960	1,010
Scotland	25,390	25,420	26,010	26,890	29,590
Wales	80	110	100	100	110
EU (excluding UK)	3,920	4,020	3,810	4,170	4,010
Not EU	2,110	2,130	2,300	2,350	2,460

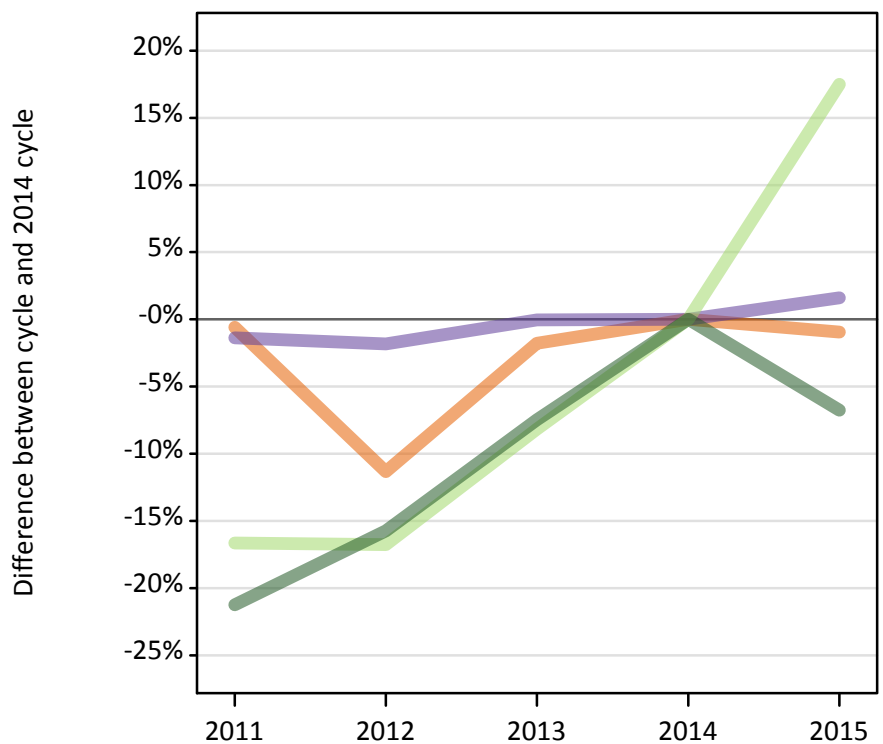
B.12 Placed applicants at 4 days after A level results day: providers in Scotland

Selected applicant domiciles: difference between cycle and 2014 cycle (at 4 days after A level results day)

Domicile of applicant	2011	2012	2013	2014	2015
England	-32%	-15%	-11%	0%	-2%
Northern Ireland	8%	-14%	5%	0%	5%
Scotland	-6%	-5%	-3%	0%	10%
EU (excluding UK)	-6%	-4%	-8%	0%	-4%
Not EU	-10%	-9%	-2%	0%	5%

B.13 Placed applicants at 4 days after A level results day: providers in Wales

Selected applicant domiciles: difference between cycle and 2014 cycle (at 4 days after A level results day)



B.14 Placed applicants at 4 days after A level results day: providers in Wales

Placed applicants by domicile (at 4 days after A level results day)

Domicile of applicant	2011	2012	2013	2014	2015
England	9,920	8,840	9,800	9,970	9,880
Northern Ireland	170	130	150	150	150
Scotland	60	40	60	60	40
Wales	9,820	9,780	9,960	9,960	10,120
EU (excluding UK)	790	790	870	940	1,110
Not EU	880	940	1,030	1,110	1,040

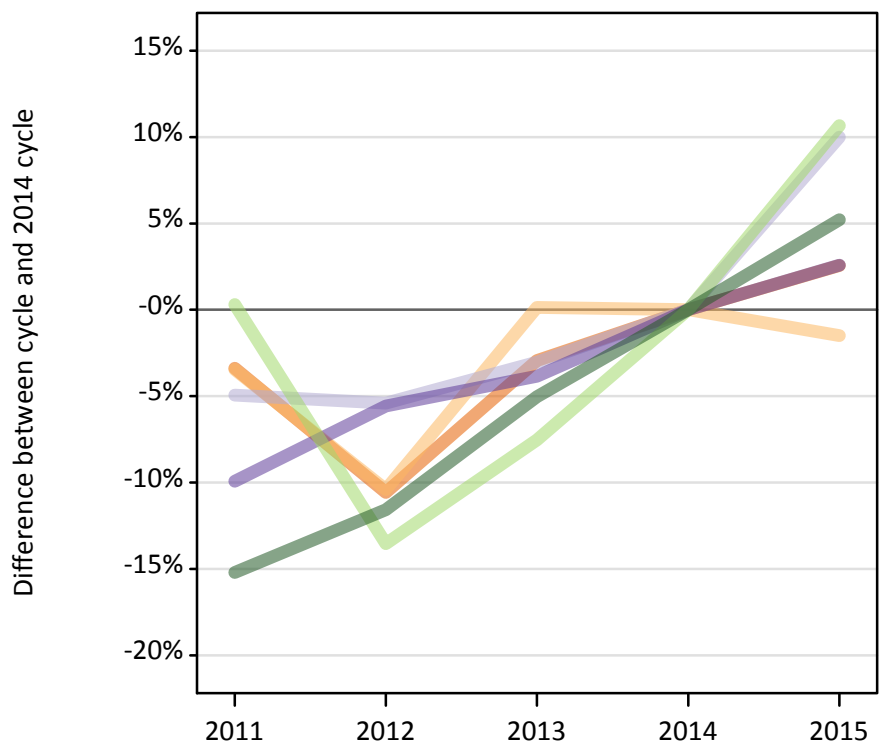
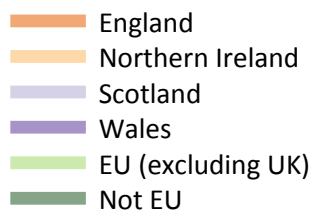
B.15 Placed applicants at 4 days after A level results day: providers in Wales

Selected applicant domiciles: difference between cycle and 2014 cycle (at 4 days after A level results day)

Domicile of applicant	2011	2012	2013	2014	2015
England	-1%	-11%	-2%	0%	-1%
Wales	-1%	-2%	-0%	0%	2%
EU (excluding UK)	-17%	-17%	-8%	0%	17%
Not EU	-21%	-16%	-7%	0%	-7%

B.16 Placed applicants at 4 days after A level results day: providers in the UK

Selected applicant domiciles: difference between cycle and 2014 cycle (at 4 days after A level results day)



B.17 Placed applicants at 4 days after A level results day: providers in the UK

Placed applicants by domicile (at 4 days after A level results day)

Domicile of applicant	2011	2012	2013	2014	2015
England	317,520	293,890	319,000	328,640	337,090
Northern Ireland	12,180	11,300	12,630	12,610	12,420
Scotland	26,940	26,810	27,480	28,340	31,170
Wales	15,860	16,630	16,930	17,610	18,070
EU (excluding UK)	23,150	19,960	21,340	23,080	25,540
Not EU	25,310	26,390	28,350	29,850	31,400

B.18 Placed applicants at 4 days after A level results day: providers in the UK

Selected applicant domiciles: difference between cycle and 2014 cycle (at 4 days after A level results day)

Domicile of applicant	2011	2012	2013	2014	2015
England	-3%	-11%	-3%	0%	3%
Northern Ireland	-3%	-10%	0%	0%	-1%
Scotland	-5%	-5%	-3%	0%	10%
Wales	-10%	-6%	-4%	0%	3%
EU (excluding UK)	0%	-14%	-8%	0%	11%
Not EU	-15%	-12%	-5%	0%	5%