

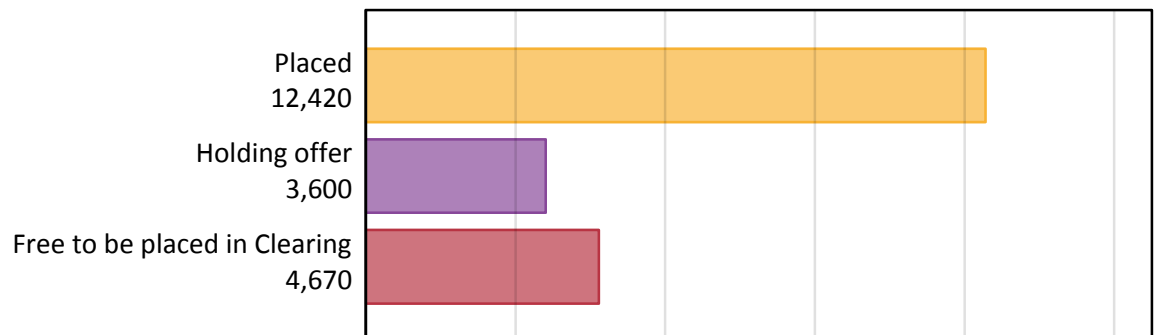
Daily Clearing Analysis: Overview

Analysis at 00:05 on Monday 17 August 2015 (4 days after A level results day)

A.1 Applicants by type and status from Northern Ireland, 2015 cycle

Applicant type	Status	2015
Main scheme	Placed (Clearing)	270
	Placed (Adjustment)	30
	Placed (Firm)	11,030
	Placed (Insurance)	970
	Placed (Other)	100
	Holding offer	3,600
	Free to be placed in Clearing	4,670
Direct to Clearing	Placed (Direct to Clearing)	20
	Other (Direct to Clearing)	80
All applicants	Placed	12,420

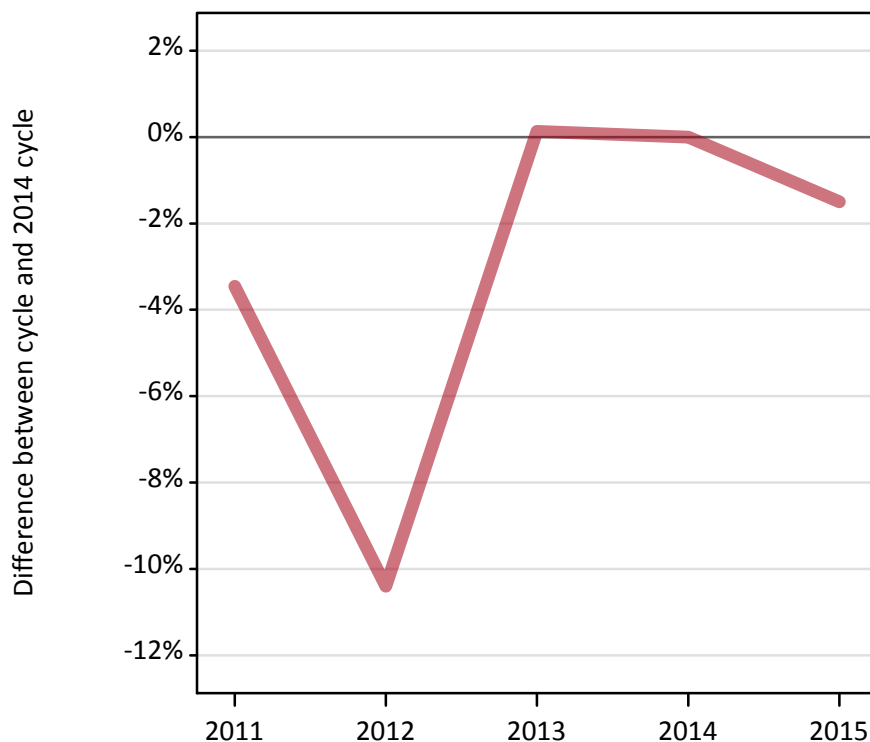
A.2 Summary of applicants who are placed, holding offers or free to be placed in Clearing (Northern Ireland)



A.3 All placed applicants from Northern Ireland: 4 days after A level results day

All placed applicants: difference between cycle and 2014 cycle

Placed



A.4 All placed applicants from Northern Ireland: 4 days after A level results day

All placed applicants: applicants at 4 days after A level results day

Applicant type	Status	2011	2012	2013	2014	2015
All applicants	Placed	12,180	11,300	12,630	12,610	12,420

A.5 All placed applicants from Northern Ireland: 4 days after A level results day

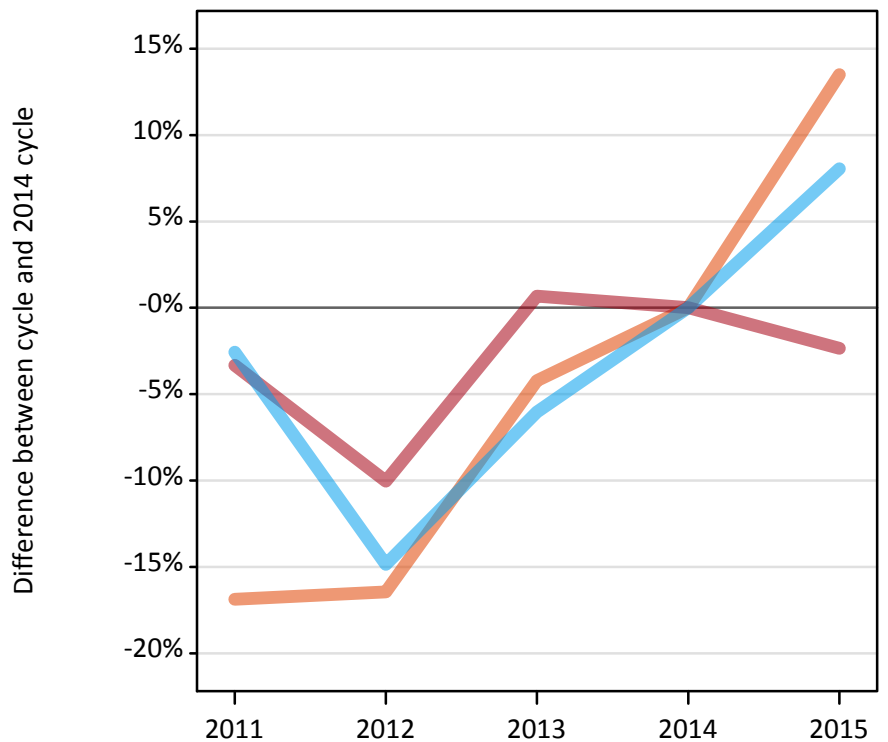
All placed applicants: difference between cycle and 2014 cycle

Applicant type	Status	2011	2012	2013	2014	2015
All applicants	Placed	-3%	-10%	0%	0%	-1%

A.6 Placed main scheme applicants from Northern Ireland: 4 days after A level results day

Selected placed routes: difference between cycle and 2014 cycle

- Placed (Clearing)
- Placed (Firm)
- Placed (Insurance)



A.7 Placed main scheme applicants from Northern Ireland: 4 days after A level results day

All Main scheme placed routes (excluding Adjustment): applicants at 4 days after A level results day

Applicant type	Status	2011	2012	2013	2014	2015
Main scheme	Placed (Clearing)	200	200	230	240	270
	Placed (Firm)	10,920	10,170	11,380	11,300	11,030
	Placed (Insurance)	870	760	840	900	970
	Placed (Other)	160	140	140	130	100

A.8 Placed main scheme applicants from Northern Ireland: 4 days after A level results day

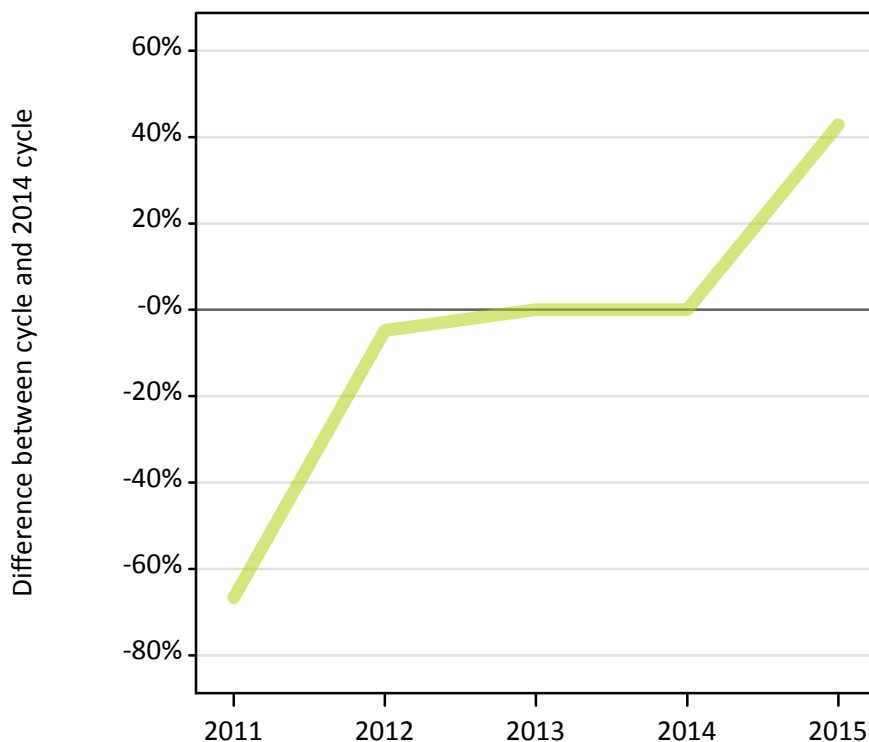
Selected placed routes: difference between cycle and 2014 cycle

Applicant type	Status	2011	2012	2013	2014	2015
Main scheme	Placed (Clearing)	-17%	-16%	-4%	0%	14%
	Placed (Firm)	-3%	-10%	1%	0%	-2%
	Placed (Insurance)	-3%	-15%	-6%	0%	8%

A.9 Main scheme applicants placed through adjustment: 4 days after A level results day

Placed through adjustment: difference between cycle and 2014 cycle

Placed (Adjustment)



A.10 Main scheme applicants placed through adjustment: 4 days after A level results day

Placed through adjustment: applicants at 4 days after A level results day

Applicant type	Status	2011	2012	2013	2014	2015
Main scheme	Placed (Adjustment)	10	20	20	20	30

A.11 Main scheme applicants placed through adjustment: 4 days after A level results day

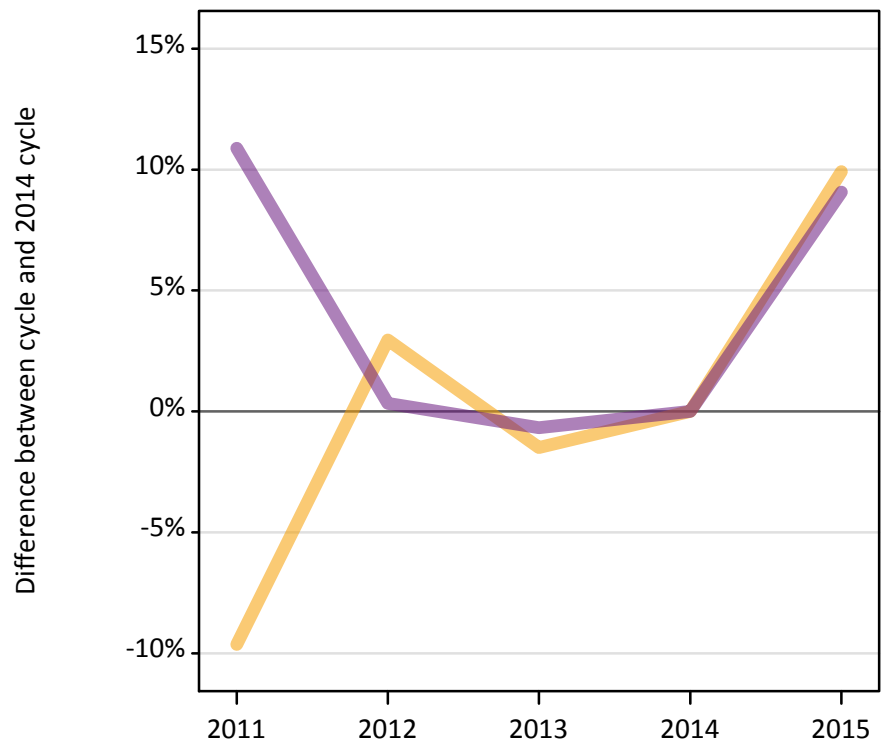
Placed through adjustment: difference between cycle and 2014 cycle

Applicant type	Status	2011	2012	2013	2014	2015
Main scheme	Placed (Adjustment)	-67%	-5%	0%	0%	43%

A.12 Main scheme applicants not currently placed from Northern Ireland: 4 days after A level results day

Applicants in unplaced states: difference between cycle and 2014 cycle

— Holding offer
— Free to be placed in Clearing



A.13 Main scheme applicants not currently placed from Northern Ireland: 4 days after A level results day

Applicants in unplaced states: applicants at 4 days after A level results day

Applicant type	Status	2011	2012	2013	2014	2015
Main scheme	Holding offer	2,960	3,380	3,230	3,280	3,600
	Free to be placed in Clearing	4,750	4,290	4,250	4,280	4,670

A.14 Main scheme applicants not currently placed from Northern Ireland: 4 days after A level results day

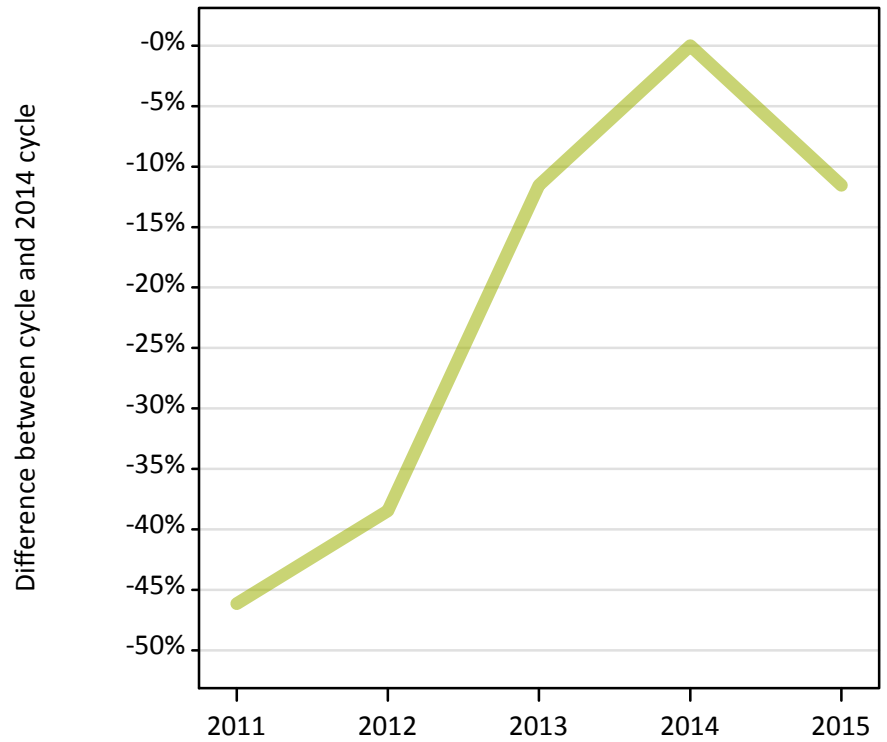
Applicants in unplaced states: difference between cycle and 2014 cycle

Applicant type	Status	2011	2012	2013	2014	2015
Main scheme	Holding offer	-10%	3%	-1%	0%	10%
	Free to be placed in Clearing	11%	0%	-1%	0%	9%

A.15 Direct to Clearing applicants from Northern Ireland: 4 days after A level results day

Placed (Direct to Clearing): difference between cycle and 2014 cycle

Placed (Direct to Clearing)



A.16 Direct to Clearing applicants from Northern Ireland: 4 days after A level results day

Direct to Clearing 4 days after A level results day

Applicant type	Status	2011	2012	2013	2014	2015
Direct to Clearing	Placed (Direct to Clearing)	10	20	20	30	20
	Other (Direct to Clearing)	90	90	80	90	80

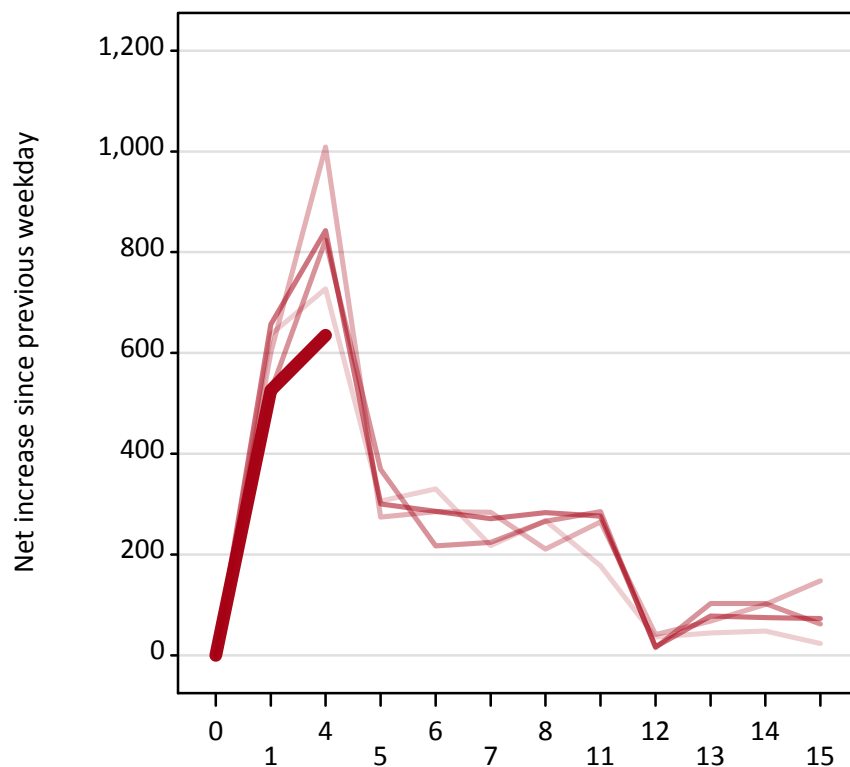
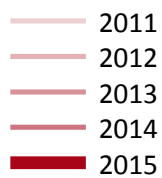
A.17 Direct to Clearing applicants from Northern Ireland: 4 days after A level results day

Placed (Direct to Clearing): difference between cycle and 2014 cycle

Applicant type	Status	2011	2012	2013	2014	2015
Direct to Clearing	Placed (Direct to Clearing)	-46%	-38%	-12%	0%	-12%

A.18 All Placed: Daily net change (from Northern Ireland)

Net increase since previous weekday (2015 cycle up to 4 days after A level results day)



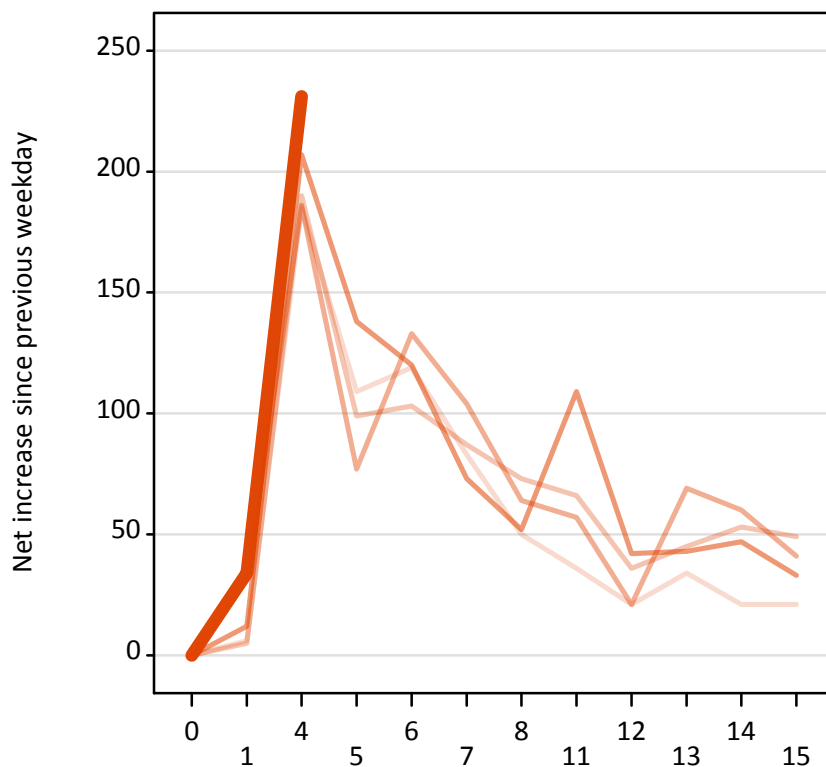
A.19 All Placed: Daily net change (from Northern Ireland)

Net increase since previous weekday (2015 cycle up to 4 days after A level results day)

Applicant status, days since A level results day		2011	2012	2013	2014	2015
All Placed	0	0	0	0	0	0
	1	640	600	520	660	530
	4	730	1,010	820	840	640
	5	310	270	370	300	
	6	330	290	220	290	
	7	220	280	220	270	
	8	270	210	270	280	
	11	180	270	290	280	
	12	40	40	20	20	
	13	40	70	100	80	
	14	50	100	100	80	
	15	20	150	60	70	

A.20 Placed through Clearing only: Daily net change (from Northern Ireland)

Net increase since previous weekday (2015 cycle up to 4 days after A level results day)



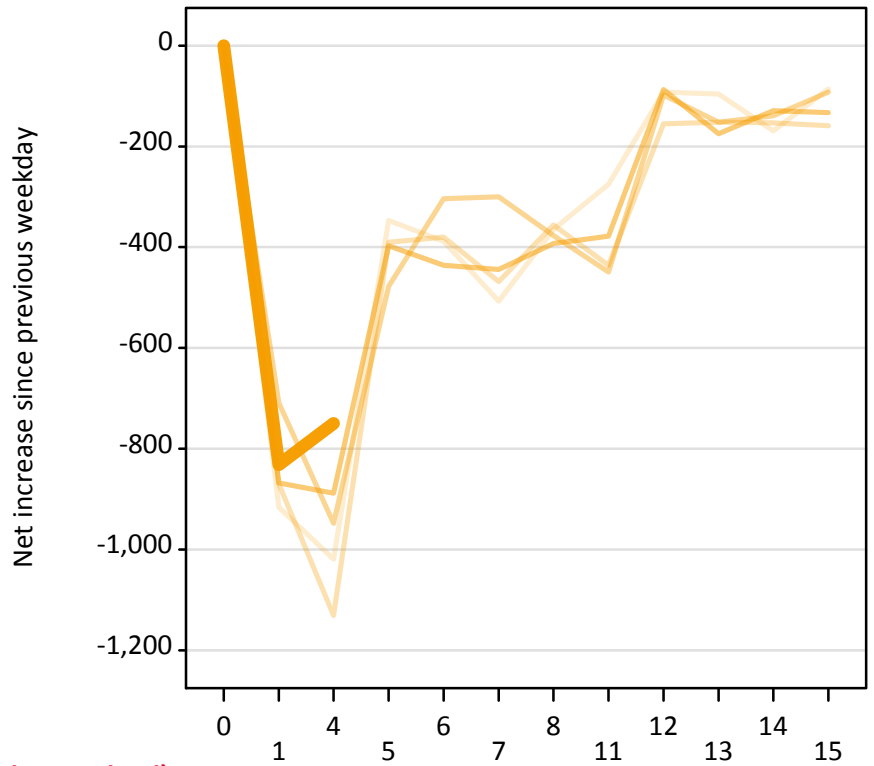
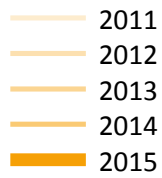
A.21 Placed through Clearing only: Daily net change (from Northern Ireland)

Net increase since previous weekday (2015 cycle up to 4 days after A level results day)

Applicant status, days since A level results day		2011	2012	2013	2014	2015
Placed through Clearing only	0	0	0	0	0	0
	1	10	10	30	10	30
	4	190	190	190	210	230
	5	110	100	80	140	
	6	120	100	130	120	
	7	80	90	100	70	
	8	50	70	60	50	
	11	40	70	60	110	
	12	20	40	20	40	
	13	30	50	70	40	
	14	20	50	60	50	
	15	20	50	40	30	

A.22 Holding Offer: Daily net change (from Northern Ireland)

Net increase since previous weekday (2015 cycle up to 4 days after A level results day)



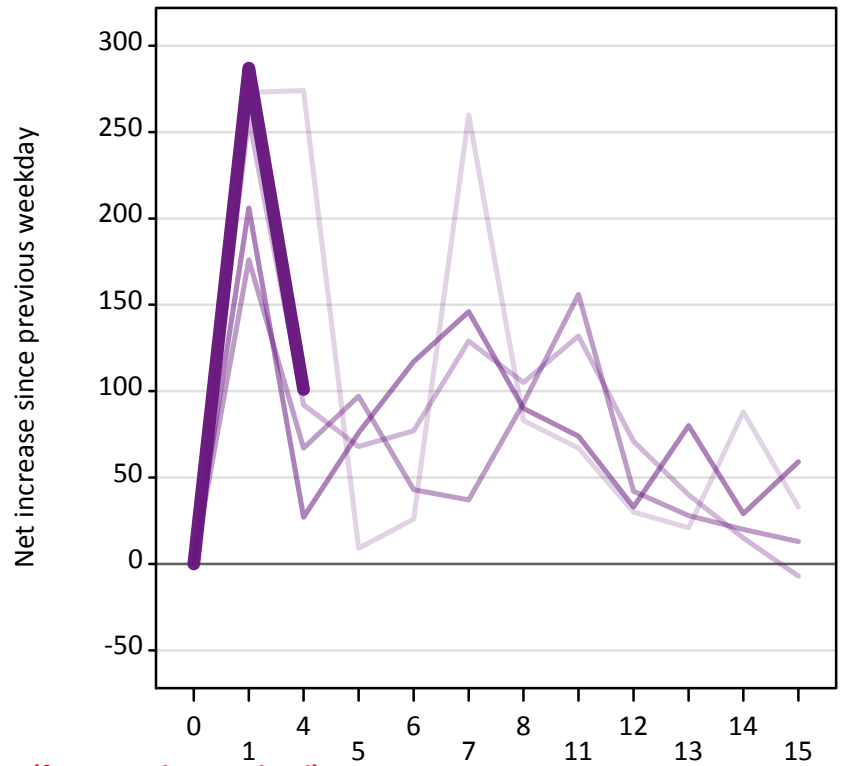
A.23 Holding Offer: Daily net change (from Northern Ireland)

Net increase since previous weekday (2015 cycle up to 4 days after A level results day)

Applicant status, days since A level results day		2011	2012	2013	2014	2015
Holding Offer	0	0	0	0	0	0
	1	-920	-870	-710	-870	-830
	4	-1,020	-1,130	-950	-890	-750
	5	-350	-390	-480	-400	
	6	-390	-380	-300	-440	
	7	-510	-470	-300	-440	
	8	-370	-360	-380	-390	
	11	-280	-440	-450	-380	
	12	-90	-160	-100	-90	
	13	-100	-150	-150	-180	
	14	-170	-150	-140	-130	
	15	-90	-160	-90	-130	

A.24 Free to be placed in Clearing: Daily net change (from Northern Ireland)

Net increase since previous weekday (2015 cycle up to 4 days after A level results day)



A.25 Free to be placed in Clearing: Daily net change (from Northern Ireland)

Net increase since previous weekday (2015 cycle up to 4 days after A level results day)

Applicant status, days since A level results day		2011	2012	2013	2014	2015
Free to be placed in Clearing	0	0	0	0	0	0
	1	270	260	180	210	290
	4	270	90	70	30	100
	5	10	70	100	80	
	6	30	80	40	120	
	7	260	130	40	150	
	8	80	110	90	90	
	11	70	130	160	70	
	12	30	70	40	30	
	13	20	40	30	80	
	14	90	20	20	30	
	15	30	-10	10	60	