

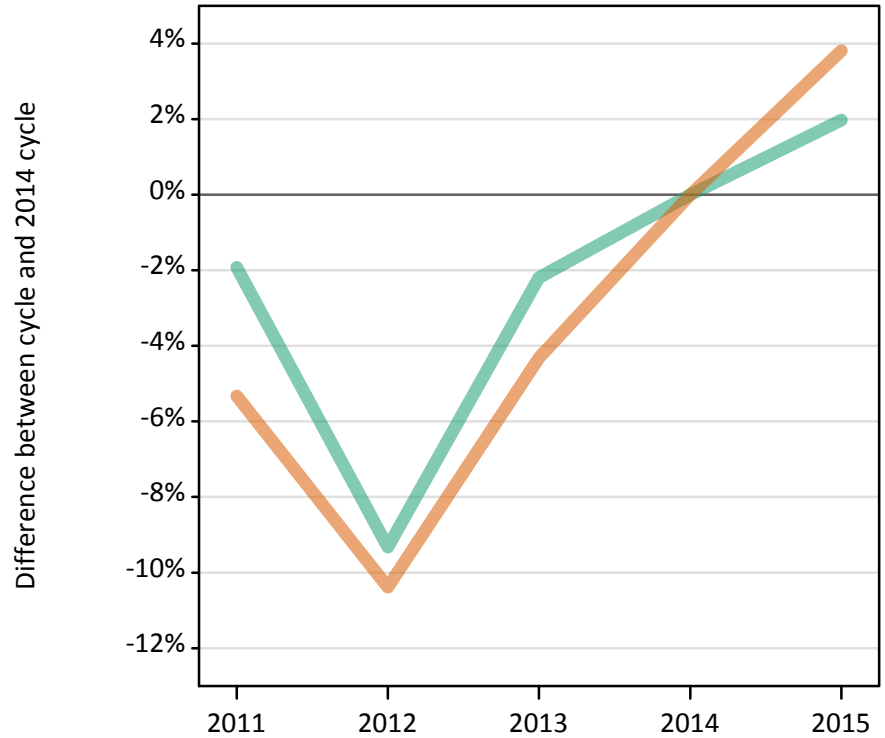
Daily Clearing Analysis: Sex

Analysis at 00:05 on Tuesday 18 August 2015 (5 days after A level results day - No Scot.X1)

SX.1 Placed applicants from all domiciles by sex: 5 days after A level results day

Placed applicants: change relative to 2014 cycle totals

Men
Women



SX.2 Placed applicants from all domiciles by sex: 5 days after A level results day

Applicant Status	Sex	2011	2012	2013	2014	2015
Placed	Men	193,570	178,960	193,040	197,370	201,270
	Women	236,960	224,310	239,500	250,300	259,850
	All	430,530	403,280	432,540	447,670	461,120

SX.3 Placed applicants from all domiciles by sex: 5 days after A level results day

Placed applicants: change relative to 2014 cycle totals

Applicant Status	Sex	2011	2012	2013	2014	2015
Placed	Men	-2%	-9%	-2%	0%	2%
	Women	-5%	-10%	-4%	0%	4%
	All	-4%	-10%	-3%	0%	3%

SX.4 Placed applicants from all domiciles by sex: 5 days after A level results day

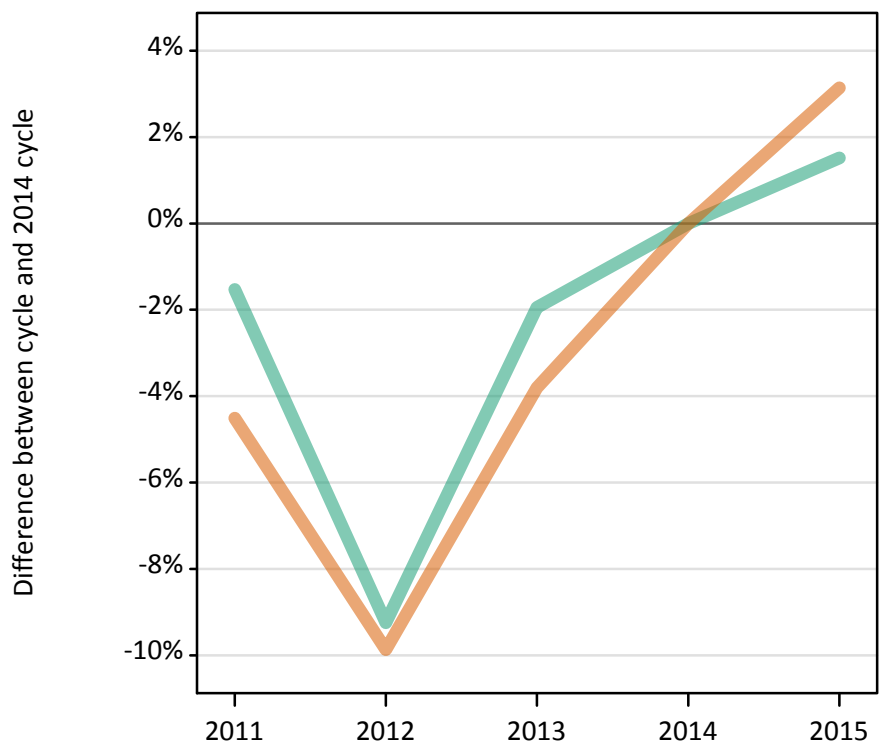
Placed applicants: absolute change relative to 2014 cycle totals

Applicant Status	Sex	2011	2012	2013	2014	2015
Placed	Men	-3,800	-18,400	-4,320	0	3,900
	Women	-13,340	-25,990	-10,810	0	9,550
	All	-17,140	-44,390	-15,130	0	13,450

SX.5 Placed applicants from the UK by sex: 5 days after A level results day

Placed applicants: change relative to 2014 cycle totals

Men
Women



SX.6 Placed applicants from the UK by sex: 5 days after A level results day

Applicant Status	Sex	2011	2012	2013	2014	2015
Placed	Men	170,500	157,140	169,780	173,150	175,770
	Women	210,540	198,720	212,090	220,490	227,410
	All	381,040	355,860	381,870	393,640	403,180

SX.7 Placed applicants from the UK by sex: 5 days after A level results day

Placed applicants: change relative to 2014 cycle totals

Applicant Status	Sex	2011	2012	2013	2014	2015
Placed	Men	-2%	-9%	-2%	0%	2%
	Women	-5%	-10%	-4%	0%	3%
	All	-3%	-10%	-3%	0%	2%

SX.8 Placed applicants from the UK by sex: 5 days after A level results day

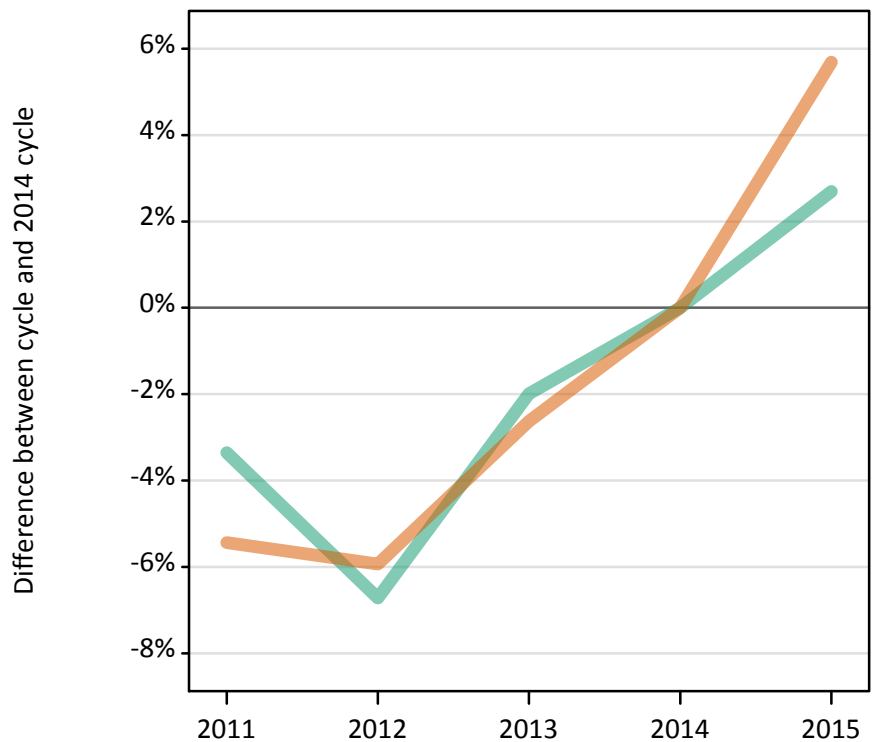
Placed applicants: absolute change relative to 2014 cycle totals

Applicant Status	Sex	2011	2012	2013	2014	2015
Placed	Men	-2,650	-16,020	-3,370	0	2,620
	Women	-9,940	-21,760	-8,400	0	6,920
	All	-12,600	-37,780	-11,770	0	9,540

SX.9 Placed 18 year old applicants from the UK by sex: 5 days after A level results day

Placed 18 year old applicants: change relative to 2014 cycle totals

Men
Women



SX.10 Placed 18 year old applicants from the UK by sex: 5 days after A level results day

Applicant Status	Sex	2011	2012	2013	2014	2015
Placed	Men	92,610	89,390	93,920	95,830	98,410
	Women	113,560	112,970	116,940	120,090	126,920
	All	206,170	202,360	210,860	215,920	225,330

SX.11 Placed 18 year old applicants from the UK by sex: 5 days after A level results day

Placed 18 year old applicants: change relative to 2014 cycle totals

Applicant Status	Sex	2011	2012	2013	2014	2015
Placed	Men	-3%	-7%	-2%	0%	3%
	Women	-5%	-6%	-3%	0%	6%
	All	-5%	-6%	-2%	0%	4%

SX.12 Placed 18 year old applicants from the UK by sex: 5 days after A level results day

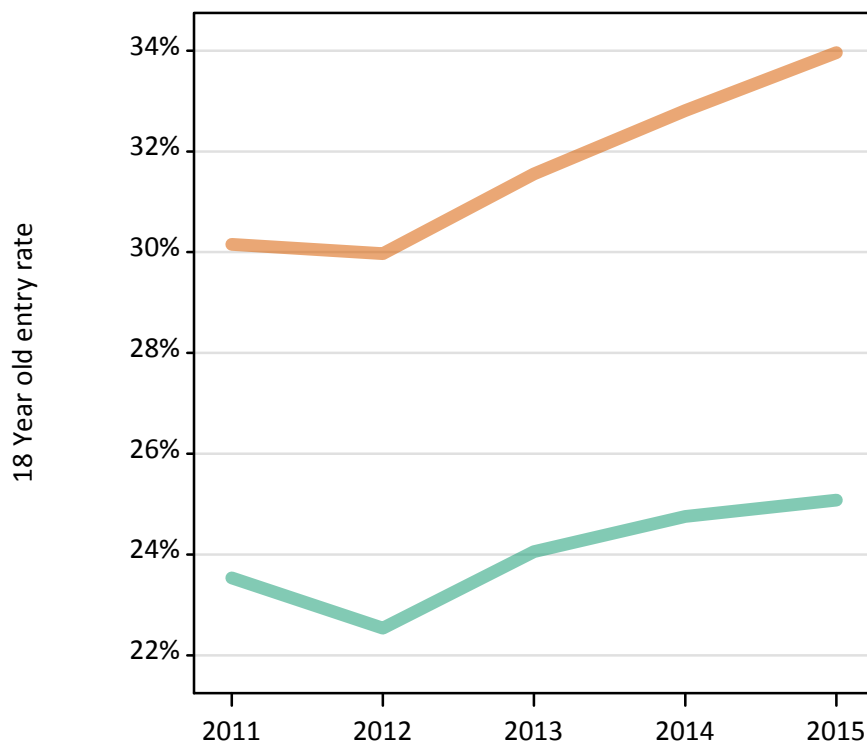
Placed 18 year old applicants: absolute change relative to 2014 cycle totals

Applicant Status	Sex	2011	2012	2013	2014	2015
Placed	Men	-3,220	-6,440	-1,910	0	2,580
	Women	-6,530	-7,130	-3,160	0	6,830
	All	-9,750	-13,570	-5,070	0	9,410

SX.13 Placed 18 year old applicants from the UK by sex: 5 days after A level results day

Placed 18 year old applicants: entry rate

Men
Women



SX.14 Placed 18 year old applicants from the UK by sex: 5 days after A level results day

Placed 18 year old applicants: entry rate

Applicant Status	Sex	2011	2012	2013	2014	2015
Placed	Men	23.5%	22.5%	24.1%	24.8%	25.1%
	Women	30.2%	30.0%	31.6%	32.8%	34.0%
	All	26.8%	26.2%	27.7%	28.7%	29.4%

SX.15 Placed 18 year old applicants from the UK by sex: 5 days after A level results day

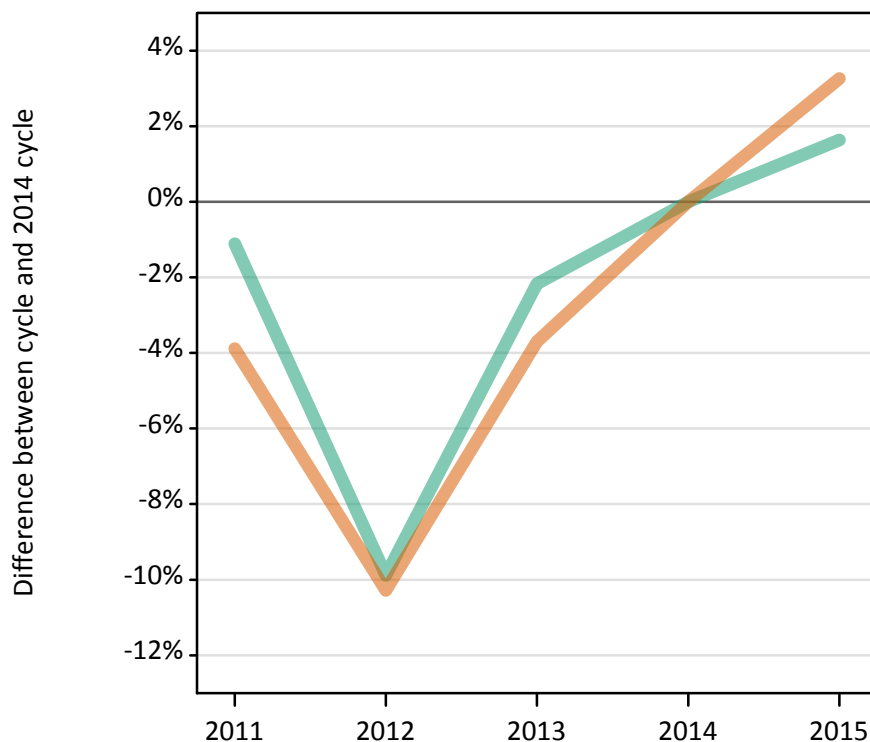
Placed 18 year old applicants: entry rate (indexed to 100 = Men)

Applicant Status	Sex	2011	2012	2013	2014	2015
Placed	Men	100	100	100	100	100
	Women	128	133	131	133	135

SX.16 Placed applicants from England by sex: 5 days after A level results day

Placed applicants: change relative to 2014 cycle totals

Men
Women



SX.17 Placed applicants from England by sex: 5 days after A level results day

Applicant Status	Sex	2011	2012	2013	2014	2015
Placed	Men	146,410	133,420	144,850	148,060	150,470
	Women	179,530	167,580	179,890	186,800	192,880
	All	325,950	301,000	324,740	334,850	343,360

SX.18 Placed applicants from England by sex: 5 days after A level results day

Placed applicants: change relative to 2014 cycle totals

Applicant Status	Sex	2011	2012	2013	2014	2015
Placed	Men	-1%	-10%	-2%	0%	2%
	Women	-4%	-10%	-4%	0%	3%
	All	-3%	-10%	-3%	0%	3%

SX.19 Placed applicants from England by sex: 5 days after A level results day

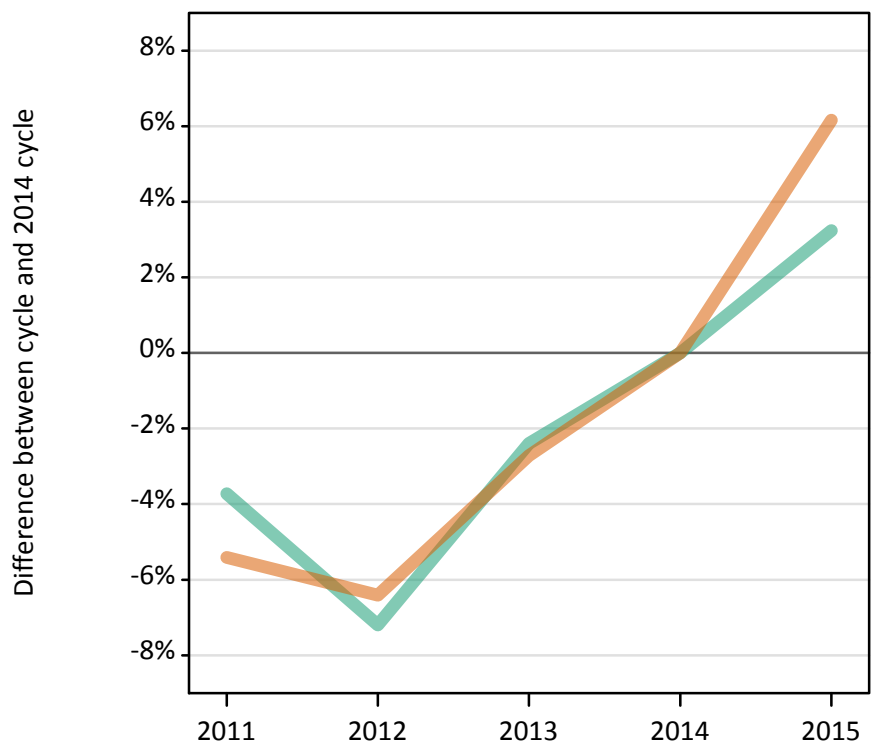
Placed applicants: absolute change relative to 2014 cycle totals

Applicant Status	Sex	2011	2012	2013	2014	2015
Placed	Men	-1,640	-14,640	-3,200	0	2,420
	Women	-7,260	-19,220	-6,910	0	6,090
	All	-8,910	-33,850	-10,110	0	8,500

SX.20 Placed 18 year old applicants from England by sex: 5 days after A level results day

Placed 18 year old applicants: change relative to 2014 cycle totals

Men
Women



SX.21 Placed 18 year old applicants from England by sex: 5 days after A level results day

Applicant Status	Sex	2011	2012	2013	2014	2015
Placed	Men	79,260	76,400	80,360	82,330	84,990
	Women	96,620	95,590	99,360	102,140	108,430
	All	175,880	171,990	179,720	184,460	193,420

SX.22 Placed 18 year old applicants from England by sex: 5 days after A level results day

Placed 18 year old applicants: change relative to 2014 cycle totals

Applicant Status	Sex	2011	2012	2013	2014	2015
Placed	Men	-4%	-7%	-2%	0%	3%
	Women	-5%	-6%	-3%	0%	6%
	All	-5%	-7%	-3%	0%	5%

SX.23 Placed 18 year old applicants from England by sex: 5 days after A level results day

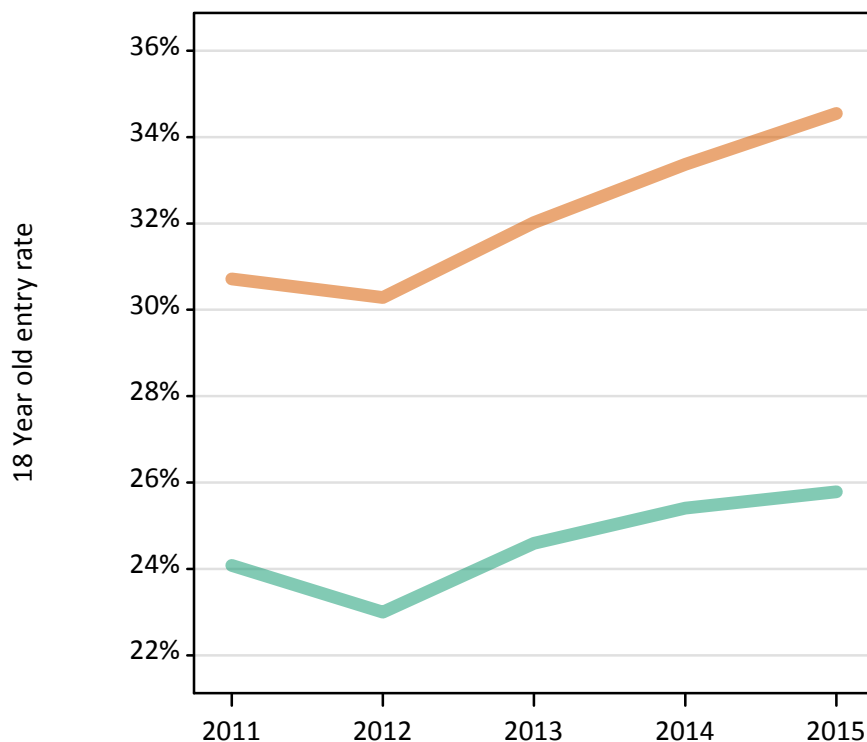
Placed 18 year old applicants: absolute change relative to 2014 cycle totals

Applicant Status	Sex	2011	2012	2013	2014	2015
Placed	Men	-3,070	-5,930	-1,970	0	2,660
	Women	-5,520	-6,550	-2,780	0	6,290
	All	-8,590	-12,470	-4,750	0	8,960

SX.24 Placed 18 year old applicants from England by sex: 5 days after A level results day

Placed 18 year old applicants: entry rate

Men
Women



SX.25 Placed 18 year old applicants from England by sex: 5 days after A level results day

Placed 18 year old applicants: entry rate

Applicant Status	Sex	2011	2012	2013	2014	2015
Placed	Men	24.1%	23.0%	24.6%	25.4%	25.8%
	Women	30.7%	30.3%	32.0%	33.4%	34.5%
	All	27.3%	26.5%	28.2%	29.3%	30.1%

SX.26 Placed 18 year old applicants from England by sex: 5 days after A level results day

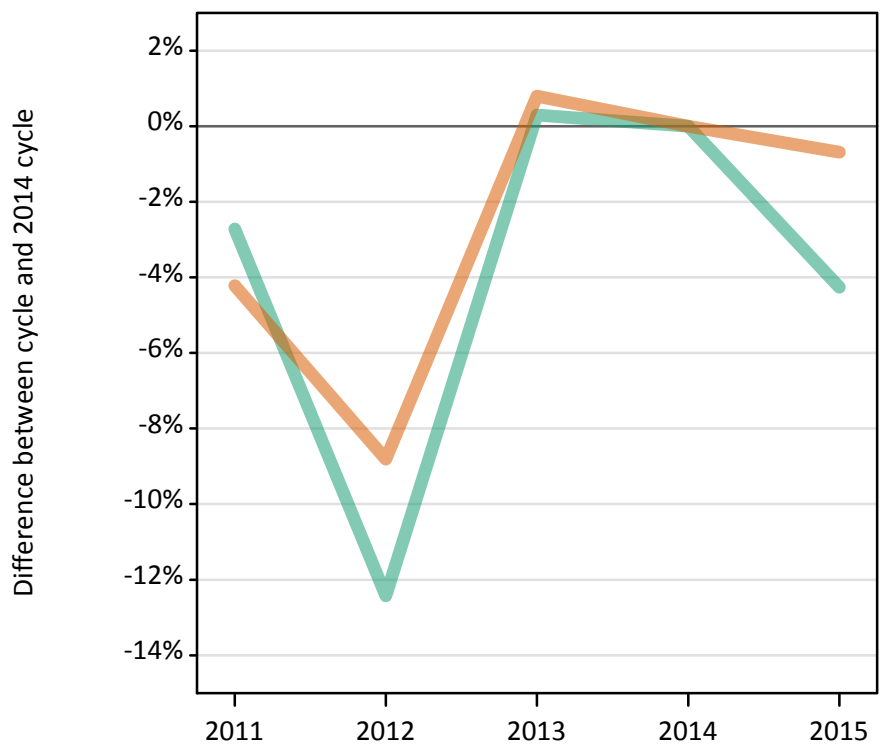
Placed 18 year old applicants: entry rate (indexed to 100 = Men)

Applicant Status	Sex	2011	2012	2013	2014	2015
Placed	Men	100	100	100	100	100
	Women	128	132	130	131	134

SX.27 Placed applicants from Northern Ireland by sex: 5 days after A level results day

Placed applicants: change relative to 2014 cycle totals

Men
Women



SX.28 Placed applicants from Northern Ireland by sex: 5 days after A level results day

Applicant Status	Sex	2011	2012	2013	2014	2015
Placed	Men	5,610	5,050	5,790	5,770	5,520
	Women	6,830	6,500	7,190	7,130	7,080
	All	12,440	11,560	12,980	12,900	12,610

SX.29 Placed applicants from Northern Ireland by sex: 5 days after A level results day

Placed applicants: change relative to 2014 cycle totals

Applicant Status	Sex	2011	2012	2013	2014	2015
Placed	Men	-3%	-12%	0%	0%	-4%
	Women	-4%	-9%	1%	0%	-1%
	All	-4%	-10%	1%	0%	-2%

SX.30 Placed applicants from Northern Ireland by sex: 5 days after A level results day

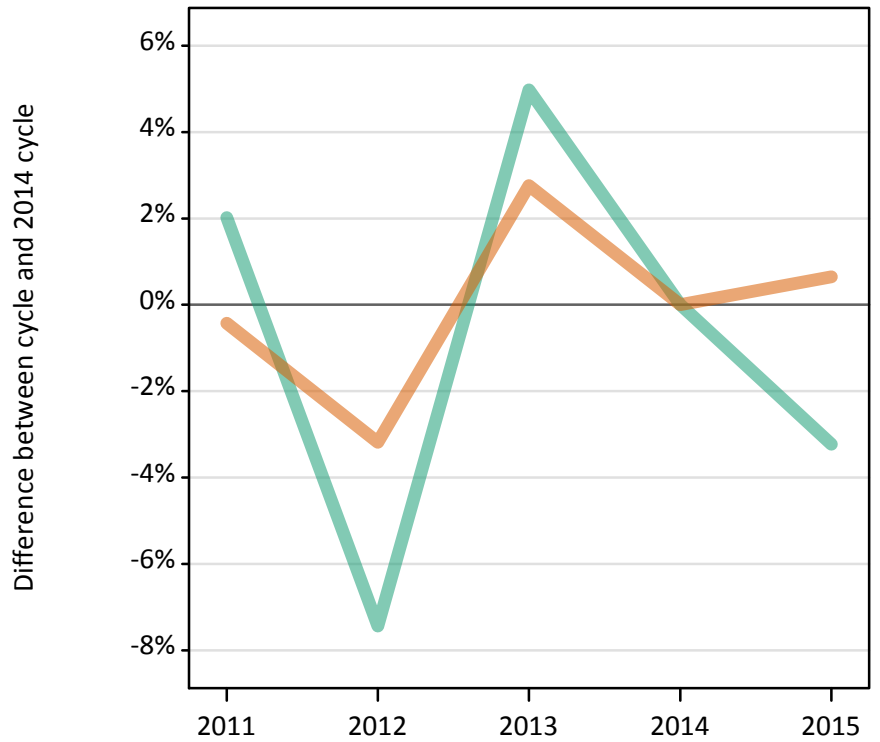
Placed applicants: absolute change relative to 2014 cycle totals

Applicant Status	Sex	2011	2012	2013	2014	2015
Placed	Men	-160	-720	20	0	-250
	Women	-300	-630	60	0	-50
	All	-460	-1,350	70	0	-300

SX.31 Placed 18 year old applicants from Northern Ireland by sex: 5 days after A level results day

Placed 18 year old applicants: change relative to 2014 cycle totals

Men
Women



SX.32 Placed 18 year old applicants from Northern Ireland by sex: 5 days after A level results day

Applicant Status	Sex	2011	2012	2013	2014	2015
Placed	Men	3,440	3,120	3,540	3,370	3,270
	Women	4,440	4,320	4,580	4,460	4,490
	All	7,880	7,440	8,130	7,830	7,750

SX.33 Placed 18 year old applicants from Northern Ireland by sex: 5 days after A level results day

Placed 18 year old applicants: change relative to 2014 cycle totals

Applicant Status	Sex	2011	2012	2013	2014	2015
Placed	Men	2%	-7%	5%	0%	-3%
	Women	-0%	-3%	3%	0%	1%
	All	1%	-5%	4%	0%	-1%

SX.34 Placed 18 year old applicants from Northern Ireland by sex: 5 days after A level results day

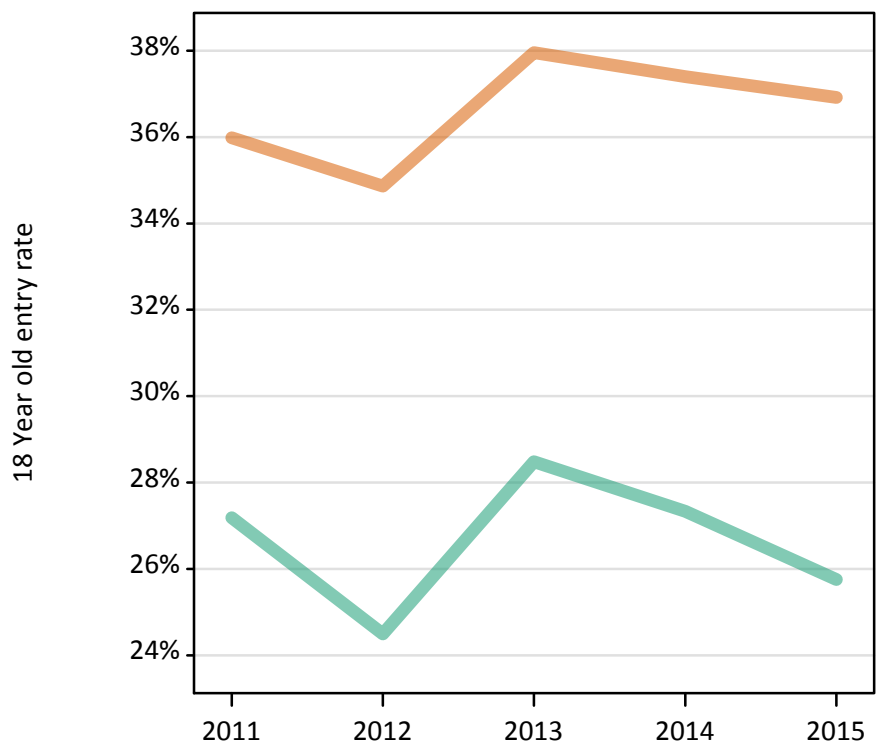
Placed 18 year old applicants: absolute change relative to 2014 cycle totals

Applicant Status	Sex	2011	2012	2013	2014	2015
Placed	Men	70	-250	170	0	-110
	Women	-20	-140	120	0	30
	All	50	-390	290	0	-80

SX.35 Placed 18 year old applicants from Northern Ireland by sex: 5 days after A level results day

Placed 18 year old applicants: entry rate

Men
Women



SX.36 Placed 18 year old applicants from Northern Ireland by sex: 5 days after A level results day

Placed 18 year old applicants: entry rate

Applicant Status	Sex	2011	2012	2013	2014	2015
Placed	Men	27.2%	24.5%	28.5%	27.3%	25.8%
	Women	36.0%	34.9%	38.0%	37.4%	36.9%
	All	31.5%	29.6%	33.1%	32.3%	31.2%

SX.37 Placed 18 year old applicants from Northern Ireland by sex: 5 days after A level results day

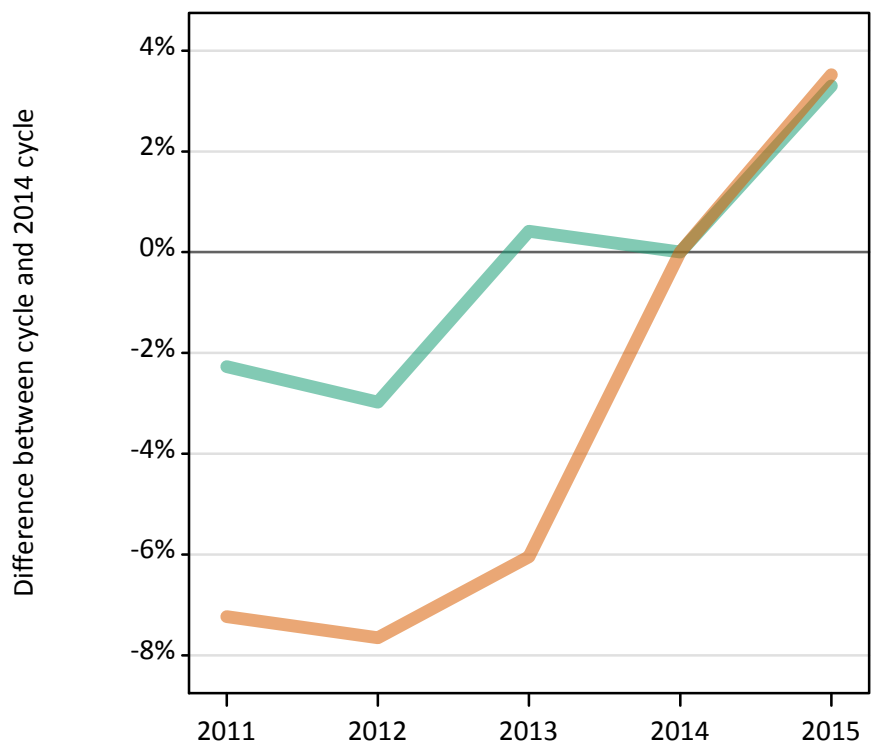
Placed 18 year old applicants: entry rate (indexed to 100 = Men)

Applicant Status	Sex	2011	2012	2013	2014	2015
Placed	Men	100	100	100	100	100
	Women	132	142	133	137	143

SX.38 Placed applicants from Scotland by sex: 5 days after A level results day

Placed applicants: change relative to 2014 cycle totals

Men
Women



SX.39 Placed applicants from Scotland by sex: 5 days after A level results day

Applicant Status	Sex	2011	2012	2013	2014	2015
Placed	Men	11,460	11,370	11,770	11,720	12,110
	Women	15,040	14,970	15,230	16,210	16,780
	All	26,500	26,340	27,000	27,930	28,890

SX.40 Placed applicants from Scotland by sex: 5 days after A level results day

Placed applicants: change relative to 2014 cycle totals

Applicant Status	Sex	2011	2012	2013	2014	2015
Placed	Men	-2%	-3%	0%	0%	3%
	Women	-7%	-8%	-6%	0%	4%
	All	-5%	-6%	-3%	0%	3%

SX.41 Placed applicants from Scotland by sex: 5 days after A level results day

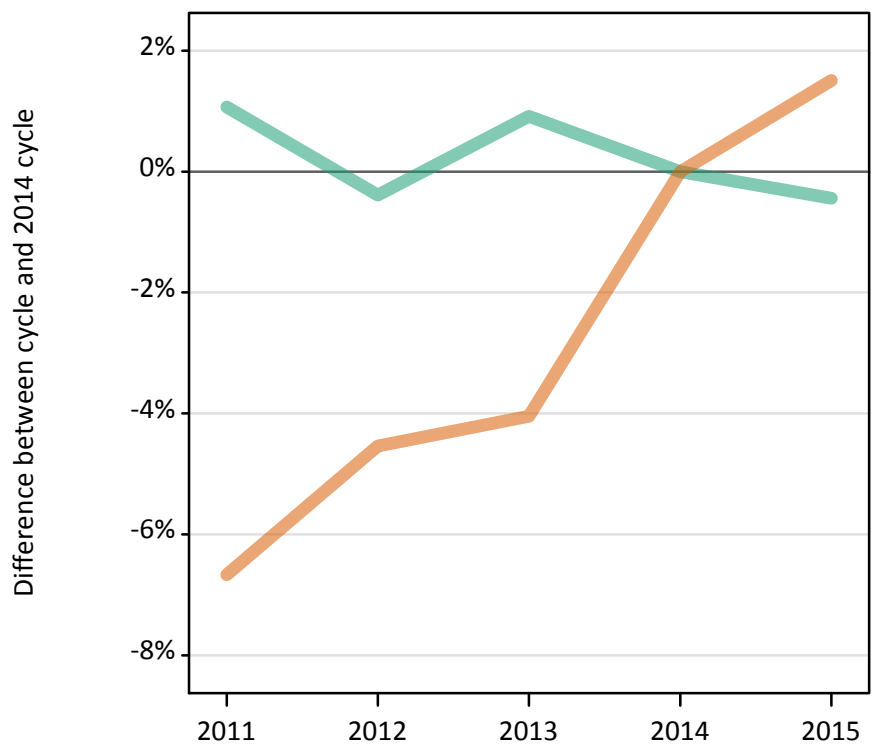
Placed applicants: absolute change relative to 2014 cycle totals

Applicant Status	Sex	2011	2012	2013	2014	2015
Placed	Men	-270	-350	50	0	390
	Women	-1,170	-1,240	-980	0	570
	All	-1,440	-1,590	-930	0	960

SX.42 Placed 18 year old applicants from Scotland by sex: 5 days after A level results day

Placed 18 year old applicants: change relative to 2014 cycle totals

Men
Women



SX.43 Placed 18 year old applicants from Scotland by sex: 5 days after A level results day

Applicant Status	Sex	2011	2012	2013	2014	2015
Placed	Men	5,980	5,890	5,970	5,920	5,890
	Women	7,420	7,590	7,630	7,950	8,070
	All	13,400	13,480	13,600	13,870	13,960

SX.44 Placed 18 year old applicants from Scotland by sex: 5 days after A level results day

Placed 18 year old applicants: change relative to 2014 cycle totals

Applicant Status	Sex	2011	2012	2013	2014	2015
Placed	Men	1%	-0%	1%	0%	-0%
	Women	-7%	-5%	-4%	0%	2%
	All	-3%	-3%	-2%	0%	1%

SX.45 Placed 18 year old applicants from Scotland by sex: 5 days after A level results day

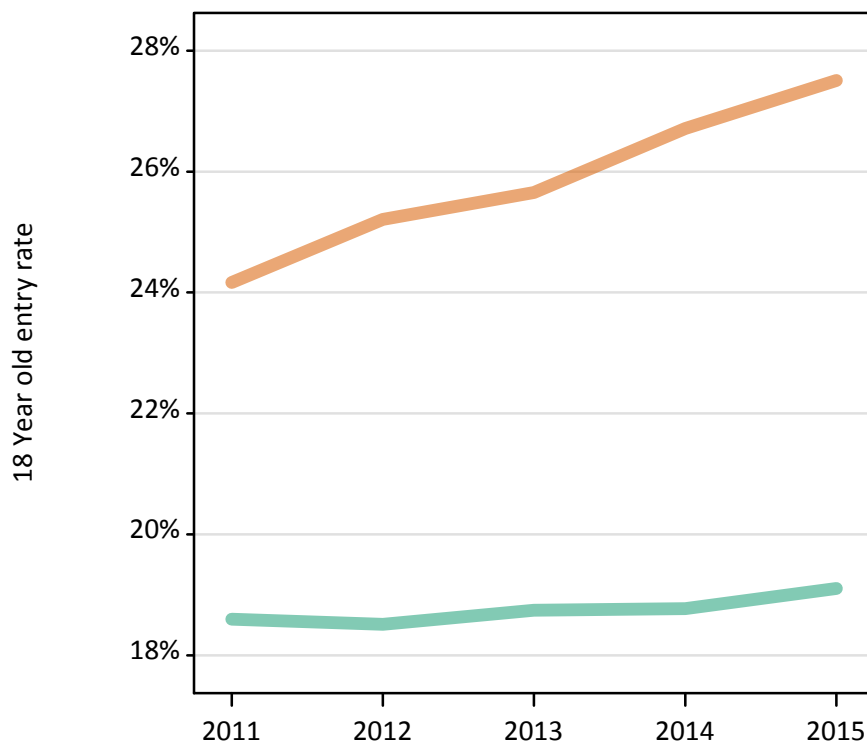
Placed 18 year old applicants: absolute change relative to 2014 cycle totals

Applicant Status	Sex	2011	2012	2013	2014	2015
Placed	Men	60	-20	50	0	-30
	Women	-530	-360	-320	0	120
	All	-470	-380	-270	0	90

SX.46 Placed 18 year old applicants from Scotland by sex: 5 days after A level results day

Placed 18 year old applicants: entry rate

Men
Women



SX.47 Placed 18 year old applicants from Scotland by sex: 5 days after A level results day

Placed 18 year old applicants: entry rate

Applicant Status	Sex	2011	2012	2013	2014	2015
Placed	Men	18.6%	18.5%	18.7%	18.8%	19.1%
	Women	24.2%	25.2%	25.7%	26.7%	27.5%
	All	21.3%	21.8%	22.1%	22.6%	23.2%

SX.48 Placed 18 year old applicants from Scotland by sex: 5 days after A level results day

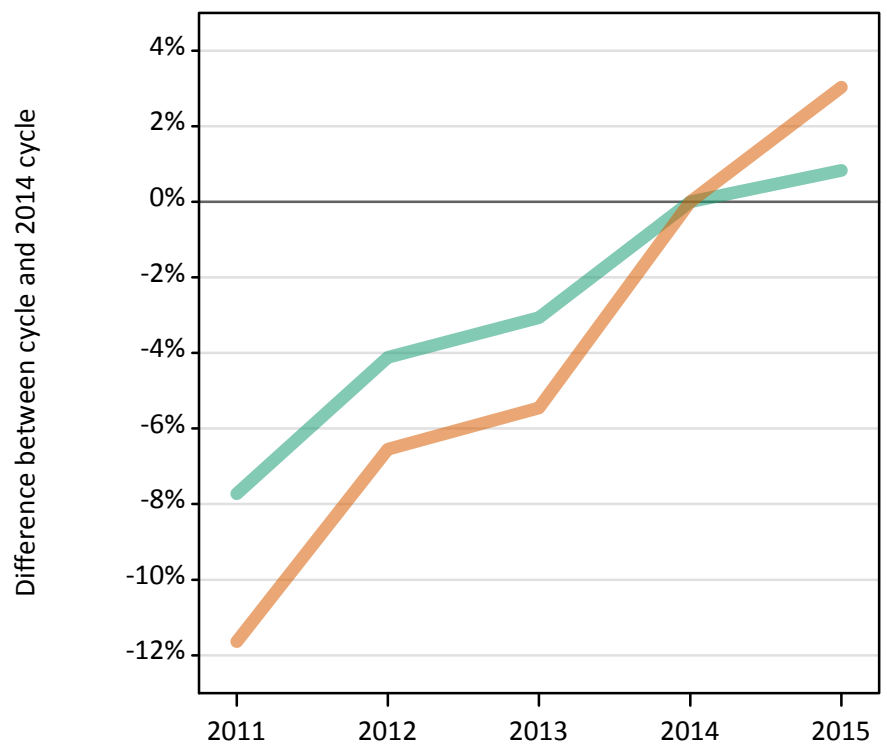
Placed 18 year old applicants: entry rate (indexed to 100 = Men)

Applicant Status	Sex	2011	2012	2013	2014	2015
Placed	Men	100	100	100	100	100
	Women	130	136	137	142	144

SX.49 Placed applicants from Wales by sex: 5 days after A level results day

Placed applicants: change relative to 2014 cycle totals

Men
Women



SX.50 Placed applicants from Wales by sex: 5 days after A level results day

Applicant Status	Sex	2011	2012	2013	2014	2015
Placed	Men	7,020	7,290	7,370	7,600	7,670
	Women	9,140	9,670	9,780	10,340	10,660
	All	16,160	16,960	17,150	17,950	18,320

SX.51 Placed applicants from Wales by sex: 5 days after A level results day

Placed applicants: change relative to 2014 cycle totals

Applicant Status	Sex	2011	2012	2013	2014	2015
Placed	Men	-8%	-4%	-3%	0%	1%
	Women	-12%	-7%	-5%	0%	3%
	All	-10%	-6%	-4%	0%	2%

SX.52 Placed applicants from Wales by sex: 5 days after A level results day

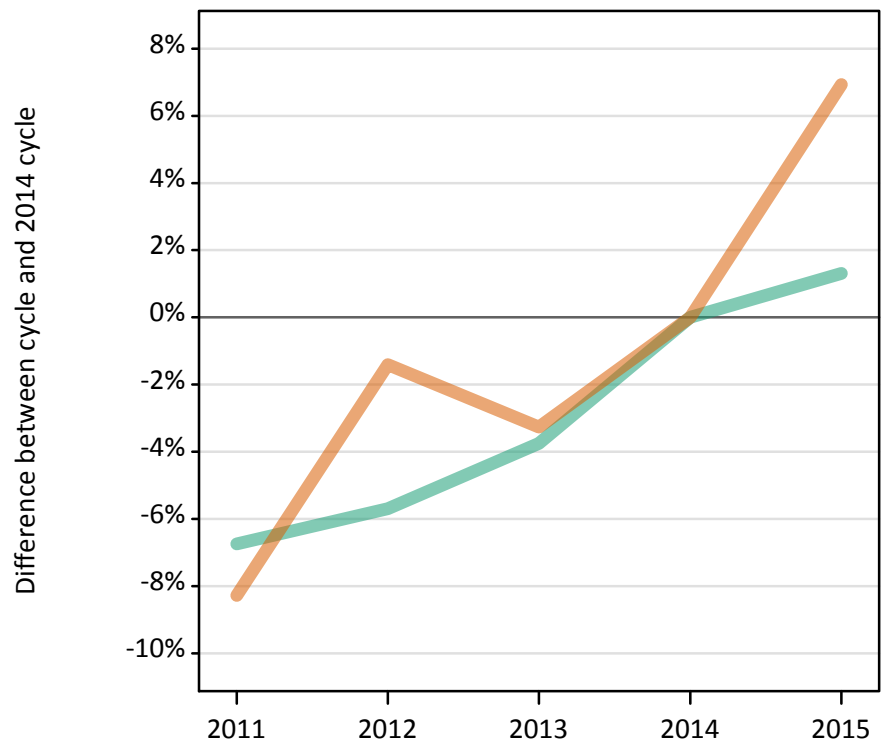
Placed applicants: absolute change relative to 2014 cycle totals

Applicant Status	Sex	2011	2012	2013	2014	2015
Placed	Men	-590	-310	-230	0	60
	Women	-1,200	-680	-560	0	310
	All	-1,790	-990	-800	0	380

SX.53 Placed 18 year old applicants from Wales by sex: 5 days after A level results day

Placed 18 year old applicants: change relative to 2014 cycle totals

Men
Women



SX.54 Placed 18 year old applicants from Wales by sex: 5 days after A level results day

Applicant Status	Sex	2011	2012	2013	2014	2015
Placed	Men	3,930	3,970	4,060	4,210	4,270
	Women	5,080	5,470	5,360	5,540	5,930
	All	9,010	9,440	9,420	9,760	10,200

SX.55 Placed 18 year old applicants from Wales by sex: 5 days after A level results day

Placed 18 year old applicants: change relative to 2014 cycle totals

Applicant Status	Sex	2011	2012	2013	2014	2015
Placed	Men	-7%	-6%	-4%	0%	1%
	Women	-8%	-1%	-3%	0%	7%
	All	-8%	-3%	-3%	0%	4%

SX.56 Placed 18 year old applicants from Wales by sex: 5 days after A level results day

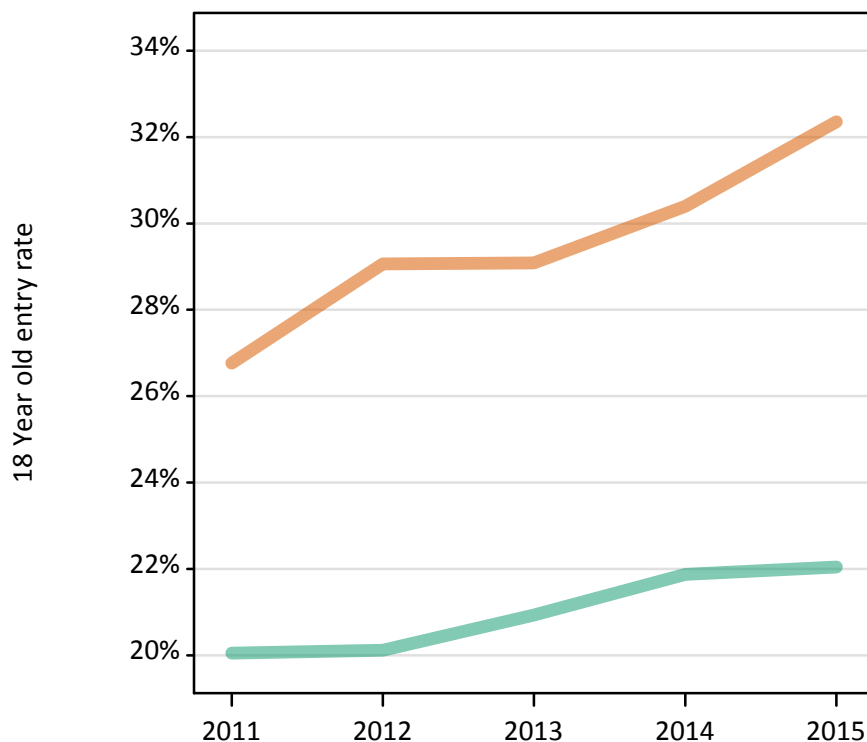
Placed 18 year old applicants: absolute change relative to 2014 cycle totals

Applicant Status	Sex	2011	2012	2013	2014	2015
Placed	Men	-280	-240	-160	0	60
	Women	-460	-80	-180	0	380
	All	-740	-320	-340	0	440

SX.57 Placed 18 year old applicants from Wales by sex: 5 days after A level results day

Placed 18 year old applicants: entry rate

Men
Women



SX.58 Placed 18 year old applicants from Wales by sex: 5 days after A level results day

Placed 18 year old applicants: entry rate

Applicant Status	Sex	2011	2012	2013	2014	2015
Placed	Men	20.0%	20.1%	20.9%	21.9%	22.0%
	Women	26.8%	29.1%	29.1%	30.4%	32.4%
	All	23.4%	24.5%	24.9%	26.0%	27.1%

SX.59 Placed 18 year old applicants from Wales by sex: 5 days after A level results day

Placed 18 year old applicants: entry rate (indexed to 100 = Men)

Applicant Status	Sex	2011	2012	2013	2014	2015
Placed	Men	100	100	100	100	100
	Women	133	145	139	139	147

SX.60 Placed applicants from the EU (excluding the UK) by sex: 5 days after A level results day

Placed applicants: change relative to 2014 cycle totals

Men
Women



SX.61 Placed applicants from the EU (excluding the UK) by sex: 5 days after A level results day

Applicant Status	Sex	2011	2012	2013	2014	2015
Placed	Men	10,570	8,970	9,540	10,050	10,930
	Women	13,010	11,360	12,120	13,420	14,940
	All	23,580	20,330	21,660	23,470	25,870

SX.62 Placed applicants from the EU (excluding the UK) by sex: 5 days after A level results day

Placed applicants: change relative to 2014 cycle totals

Applicant Status	Sex	2011	2012	2013	2014	2015
Placed	Men	5%	-11%	-5%	0%	9%
	Women	-3%	-15%	-10%	0%	11%
	All	0%	-13%	-8%	0%	10%

SX.63 Placed applicants from the EU (excluding the UK) by sex: 5 days after A level results day

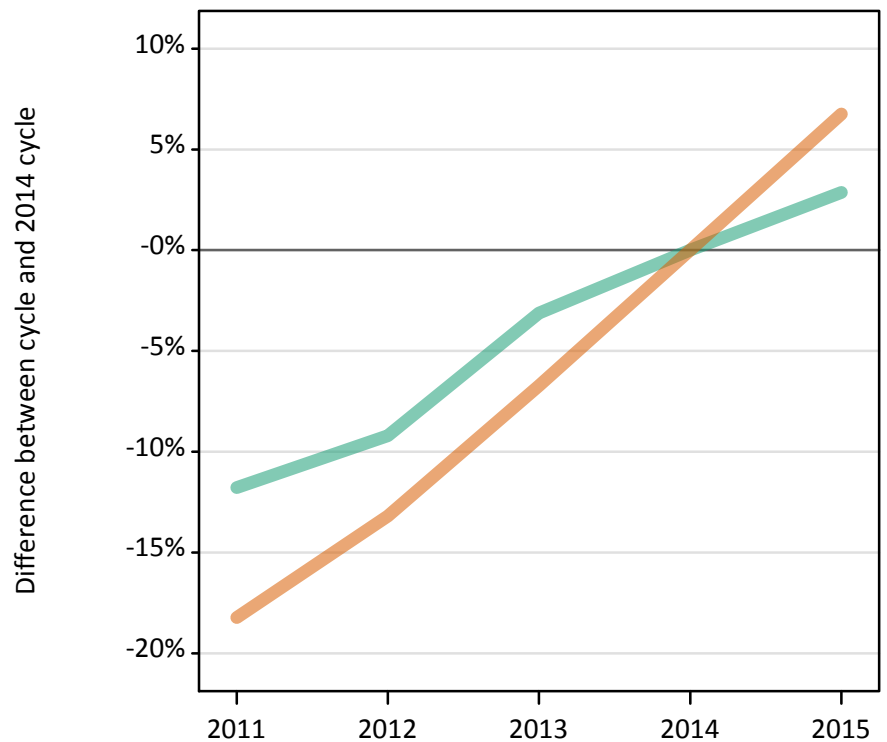
Placed applicants: absolute change relative to 2014 cycle totals

Applicant Status	Sex	2011	2012	2013	2014	2015
Placed	Men	520	-1,080	-510	0	880
	Women	-410	-2,070	-1,310	0	1,520
	All	110	-3,150	-1,820	0	2,400

SX.64 Placed applicants from overseas (not EU) by sex: 5 days after A level results day

Placed applicants: change relative to 2014 cycle totals

Men
Women



SX.65 Placed applicants from overseas (not EU) by sex: 5 days after A level results day

Applicant Status	Sex	2011	2012	2013	2014	2015
Placed	Men	12,500	12,860	13,720	14,170	14,570
	Women	13,410	14,230	15,290	16,400	17,500
	All	25,910	27,090	29,010	30,560	32,080

SX.66 Placed applicants from overseas (not EU) by sex: 5 days after A level results day

Placed applicants: change relative to 2014 cycle totals

Applicant Status	Sex	2011	2012	2013	2014	2015
Placed	Men	-12%	-9%	-3%	0%	3%
	Women	-18%	-13%	-7%	0%	7%
	All	-15%	-11%	-5%	0%	5%

SX.67 Placed applicants from overseas (not EU) by sex: 5 days after A level results day

Placed applicants: absolute change relative to 2014 cycle totals

Applicant Status	Sex	2011	2012	2013	2014	2015
Placed	Men	-1,670	-1,310	-440	0	410
	Women	-2,990	-2,160	-1,100	0	1,110
	All	-4,660	-3,470	-1,550	0	1,520