

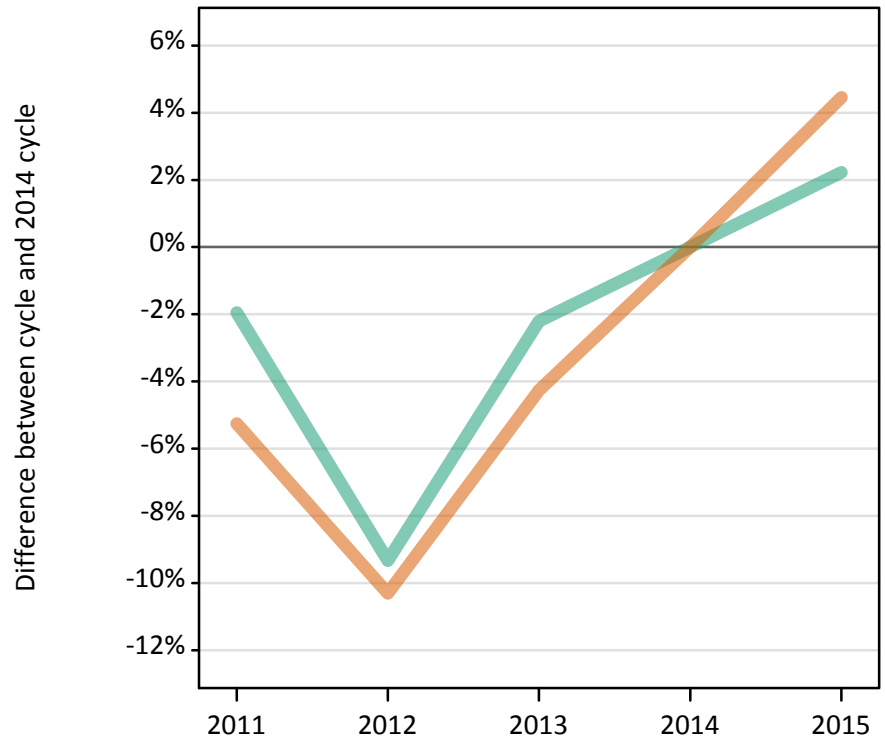
# Daily Clearing Analysis: Sex

## Analysis at 00:05 on Tuesday 18 August 2015 (5 days after A level results day)

### S.1 Placed applicants from all domiciles by sex: 5 days after A level results day

Placed applicants: change relative to 2014 cycle totals

Men  
Women



### S.2 Placed applicants from all domiciles by sex: 5 days after A level results day

Applicant Status	Sex	2011	2012	2013	2014	2015
Placed	Men	193,640	179,050	193,120	197,480	201,890
	Women	237,610	224,950	240,100	250,790	261,970
	All	431,250	404,000	433,220	448,280	463,850

### S.3 Placed applicants from all domiciles by sex: 5 days after A level results day

Placed applicants: change relative to 2014 cycle totals

Applicant Status	Sex	2011	2012	2013	2014	2015
Placed	Men	-2%	-9%	-2%	0%	2%
	Women	-5%	-10%	-4%	0%	4%
	All	-4%	-10%	-3%	0%	3%

### S.4 Placed applicants from all domiciles by sex: 5 days after A level results day

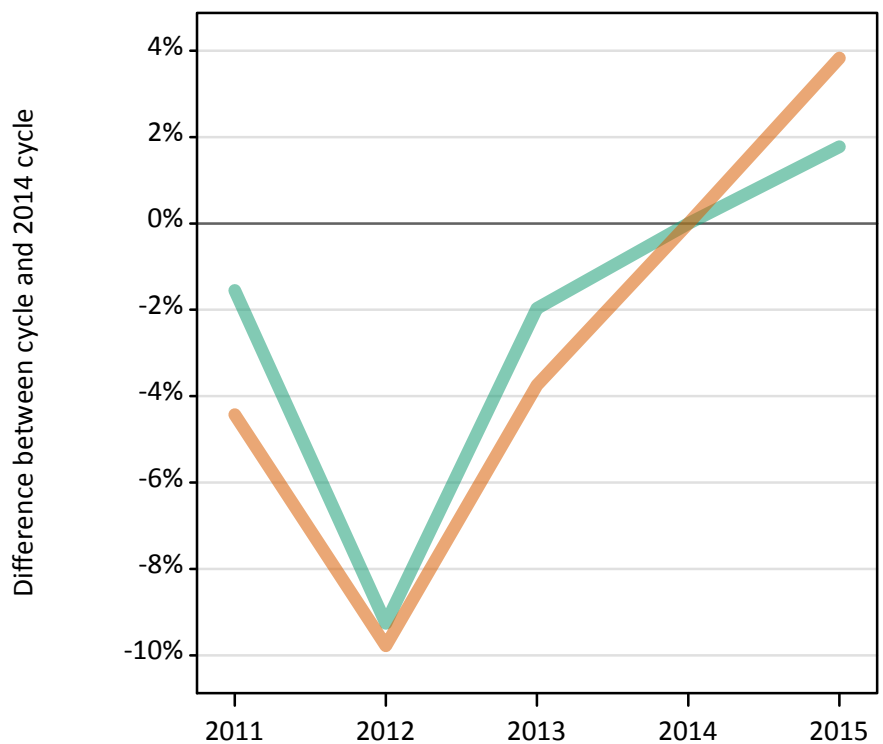
Placed applicants: absolute change relative to 2014 cycle totals

Applicant Status	Sex	2011	2012	2013	2014	2015
Placed	Men	-3,840	-18,440	-4,370	0	4,400
	Women	-13,180	-25,840	-10,690	0	11,170
	All	-17,020	-44,280	-15,060	0	15,580

### S.5 Placed applicants from the UK by sex: 5 days after A level results day

Placed applicants: change relative to 2014 cycle totals

Men  
Women



### S.6 Placed applicants from the UK by sex: 5 days after A level results day

Applicant Status	Sex	2011	2012	2013	2014	2015
Placed	Men	170,570	157,220	169,850	173,260	176,340
	Women	211,180	199,340	212,680	220,960	229,420
	All	381,740	356,560	382,540	394,220	405,760

### S.7 Placed applicants from the UK by sex: 5 days after A level results day

Placed applicants: change relative to 2014 cycle totals

Applicant Status	Sex	2011	2012	2013	2014	2015
Placed	Men	-2%	-9%	-2%	0%	2%
	Women	-4%	-10%	-4%	0%	4%
	All	-3%	-10%	-3%	0%	3%

### S.8 Placed applicants from the UK by sex: 5 days after A level results day

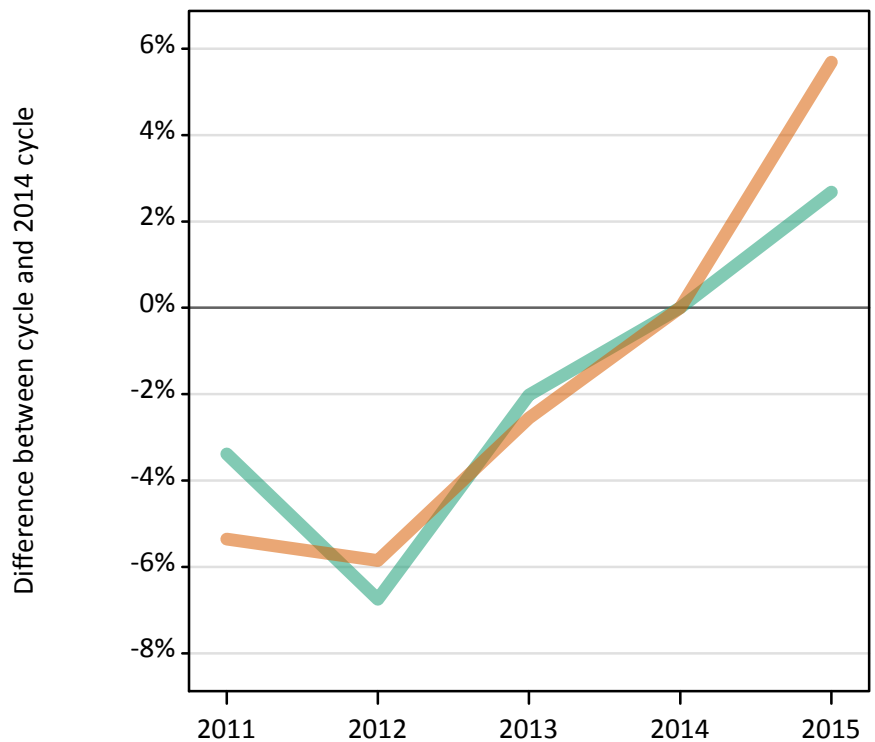
Placed applicants: absolute change relative to 2014 cycle totals

Applicant Status	Sex	2011	2012	2013	2014	2015
Placed	Men	-2,700	-16,050	-3,410	0	3,080
	Women	-9,790	-21,620	-8,280	0	8,460
	All	-12,480	-37,660	-11,690	0	11,540

### S.9 Placed 18 year old applicants from the UK by sex: 5 days after A level results day

Placed 18 year old applicants: change relative to 2014 cycle totals

Men  
Women



### S.10 Placed 18 year old applicants from the UK by sex: 5 days after A level results day

Applicant Status	Sex	2011	2012	2013	2014	2015
Placed	Men	92,650	89,430	93,960	95,900	98,470
	Women	113,960	113,360	117,330	120,410	127,260
	All	206,610	202,790	211,290	216,300	225,730

### S.11 Placed 18 year old applicants from the UK by sex: 5 days after A level results day

Placed 18 year old applicants: change relative to 2014 cycle totals

Applicant Status	Sex	2011	2012	2013	2014	2015
Placed	Men	-3%	-7%	-2%	0%	3%
	Women	-5%	-6%	-3%	0%	6%
	All	-4%	-6%	-2%	0%	4%

### S.12 Placed 18 year old applicants from the UK by sex: 5 days after A level results day

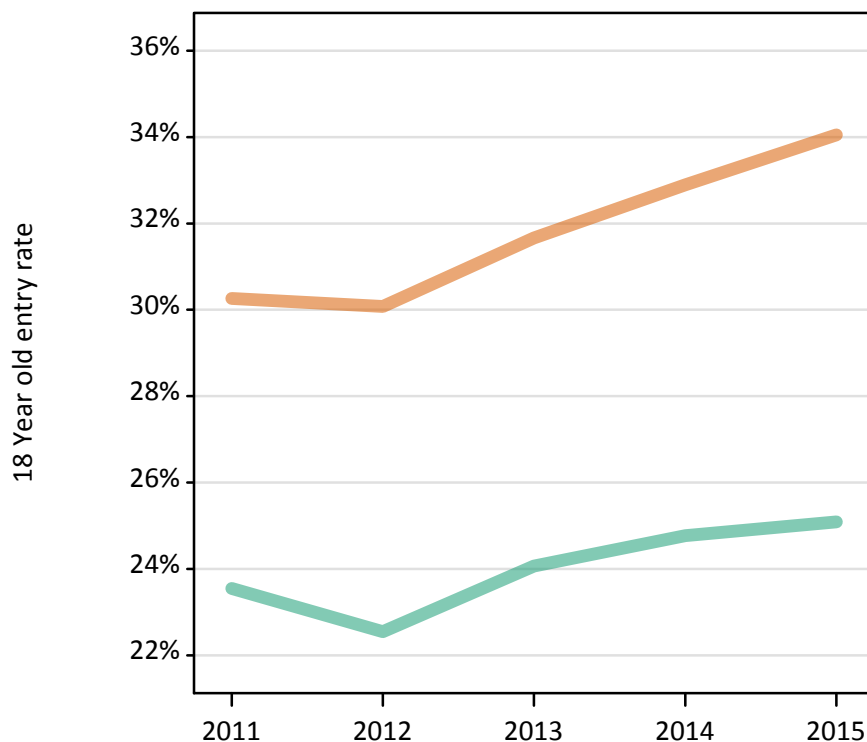
Placed 18 year old applicants: absolute change relative to 2014 cycle totals

Applicant Status	Sex	2011	2012	2013	2014	2015
Placed	Men	-3,250	-6,470	-1,940	0	2,570
	Women	-6,450	-7,050	-3,080	0	6,850
	All	-9,690	-13,520	-5,020	0	9,420

### S.13 Placed 18 year old applicants from the UK by sex: 5 days after A level results day

Placed 18 year old applicants: entry rate

Men  
Women



### S.14 Placed 18 year old applicants from the UK by sex: 5 days after A level results day

Placed 18 year old applicants: entry rate

Applicant Status	Sex	2011	2012	2013	2014	2015
Placed	Men	23.5%	22.5%	24.1%	24.8%	25.1%
	Women	30.3%	30.1%	31.7%	32.9%	34.1%
	All	26.8%	26.2%	27.8%	28.7%	29.5%

### S.15 Placed 18 year old applicants from the UK by sex: 5 days after A level results day

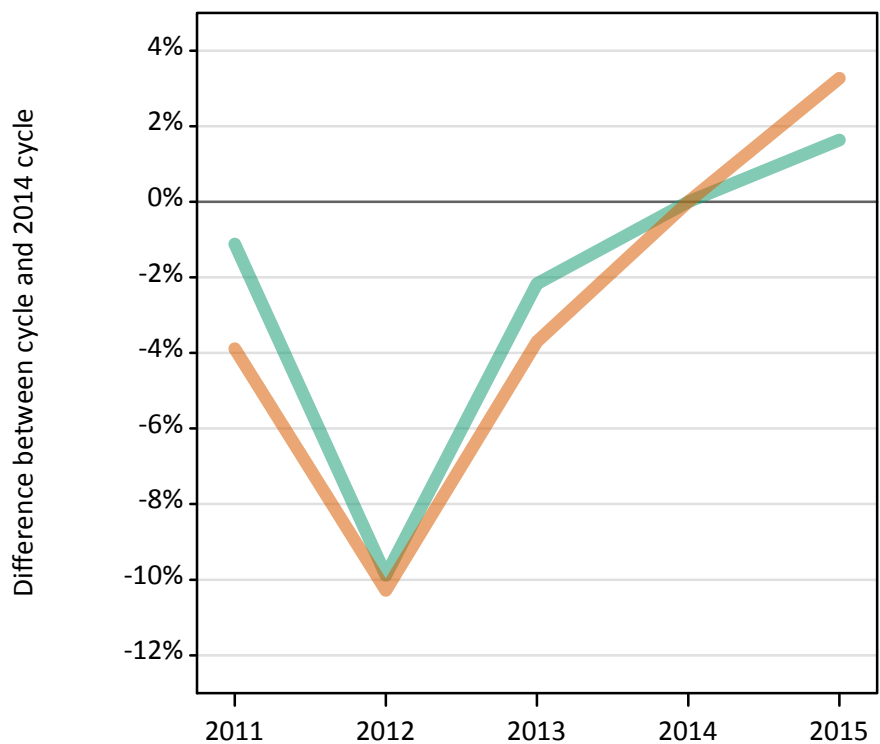
Placed 18 year old applicants: entry rate (indexed to 100 = Men)

Applicant Status	Sex	2011	2012	2013	2014	2015
Placed	Men	100	100	100	100	100
	Women	129	133	132	133	136

### S.16 Placed applicants from England by sex: 5 days after A level results day

Placed applicants: change relative to 2014 cycle totals

Men  
Women



### S.17 Placed applicants from England by sex: 5 days after A level results day

Applicant Status	Sex	2011	2012	2013	2014	2015
Placed	Men	146,410	133,420	144,860	148,060	150,480
	Women	179,540	167,590	179,890	186,800	192,910
	All	325,950	301,010	324,750	334,870	343,390

### S.18 Placed applicants from England by sex: 5 days after A level results day

Placed applicants: change relative to 2014 cycle totals

Applicant Status	Sex	2011	2012	2013	2014	2015
Placed	Men	-1%	-10%	-2%	0%	2%
	Women	-4%	-10%	-4%	0%	3%
	All	-3%	-10%	-3%	0%	3%

### S.19 Placed applicants from England by sex: 5 days after A level results day

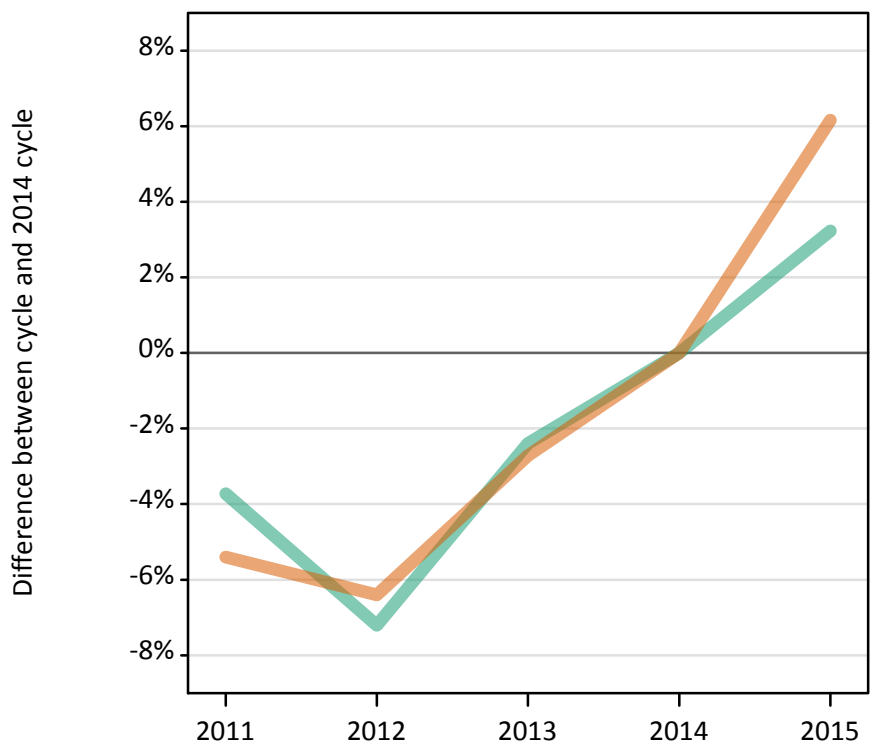
Placed applicants: absolute change relative to 2014 cycle totals

Applicant Status	Sex	2011	2012	2013	2014	2015
Placed	Men	-1,650	-14,640	-3,210	0	2,420
	Women	-7,260	-19,210	-6,910	0	6,100
	All	-8,910	-33,860	-10,120	0	8,520

### S.20 Placed 18 year old applicants from England by sex: 5 days after A level results day

Placed 18 year old applicants: change relative to 2014 cycle totals

Men  
Women



### S.21 Placed 18 year old applicants from England by sex: 5 days after A level results day

Applicant Status	Sex	2011	2012	2013	2014	2015
Placed	Men	79,260	76,400	80,360	82,330	84,990
	Women	96,620	95,600	99,360	102,140	108,440
	All	175,880	172,000	179,720	184,470	193,430

### S.22 Placed 18 year old applicants from England by sex: 5 days after A level results day

Placed 18 year old applicants: change relative to 2014 cycle totals

Applicant Status	Sex	2011	2012	2013	2014	2015
Placed	Men	-4%	-7%	-2%	0%	3%
	Women	-5%	-6%	-3%	0%	6%
	All	-5%	-7%	-3%	0%	5%

### S.23 Placed 18 year old applicants from England by sex: 5 days after A level results day

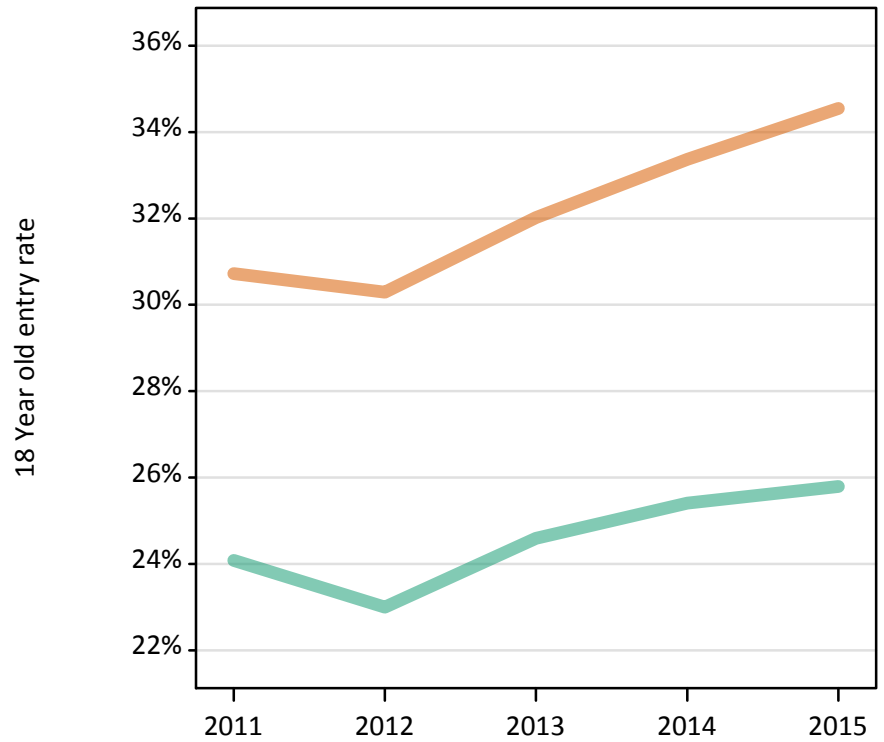
Placed 18 year old applicants: absolute change relative to 2014 cycle totals

Applicant Status	Sex	2011	2012	2013	2014	2015
Placed	Men	-3,070	-5,930	-1,970	0	2,660
	Women	-5,520	-6,540	-2,780	0	6,300
	All	-8,590	-12,470	-4,750	0	8,960

### S.24 Placed 18 year old applicants from England by sex: 5 days after A level results day

Placed 18 year old applicants: entry rate

Men  
Women



### S.25 Placed 18 year old applicants from England by sex: 5 days after A level results day

Placed 18 year old applicants: entry rate

Applicant Status	Sex	2011	2012	2013	2014	2015
Placed	Men	24.1%	23.0%	24.6%	25.4%	25.8%
	Women	30.7%	30.3%	32.0%	33.4%	34.5%
	All	27.3%	26.5%	28.2%	29.3%	30.1%

### S.26 Placed 18 year old applicants from England by sex: 5 days after A level results day

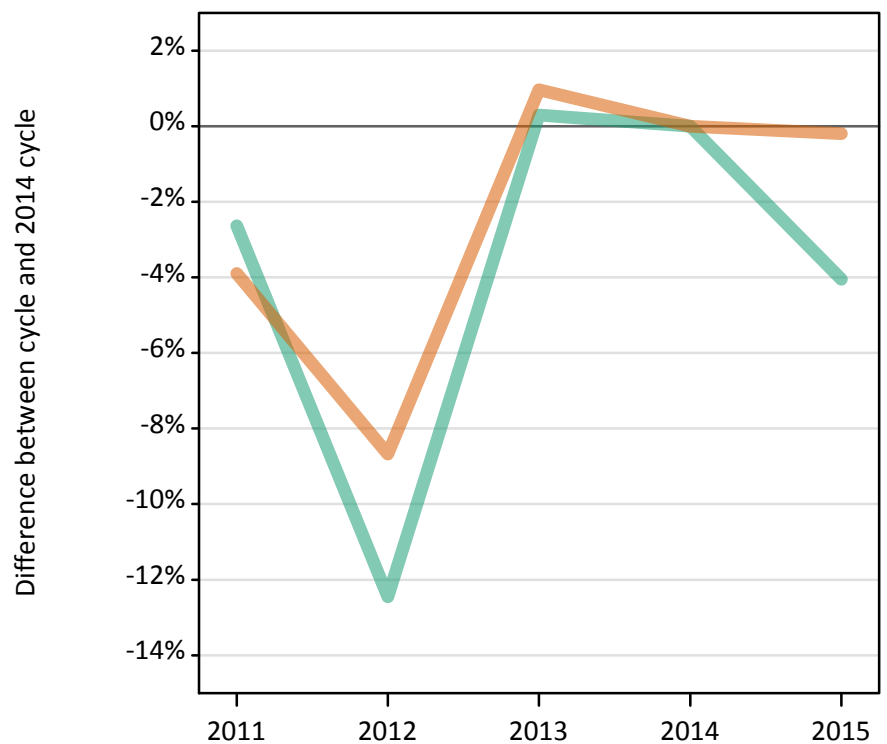
Placed 18 year old applicants: entry rate (indexed to 100 = Men)

Applicant Status	Sex	2011	2012	2013	2014	2015
Placed	Men	100	100	100	100	100
	Women	128	132	130	131	134

### S.27 Placed applicants from Northern Ireland by sex: 5 days after A level results day

Placed applicants: change relative to 2014 cycle totals

Men  
Women



### S.28 Placed applicants from Northern Ireland by sex: 5 days after A level results day

Applicant Status	Sex	2011	2012	2013	2014	2015
Placed	Men	5,620	5,050	5,790	5,770	5,540
	Women	6,860	6,520	7,210	7,140	7,120
	All	12,480	11,570	13,000	12,910	12,660

### S.29 Placed applicants from Northern Ireland by sex: 5 days after A level results day

Placed applicants: change relative to 2014 cycle totals

Applicant Status	Sex	2011	2012	2013	2014	2015
Placed	Men	-3%	-12%	0%	0%	-4%
	Women	-4%	-9%	1%	0%	-0%
	All	-3%	-10%	1%	0%	-2%

### S.30 Placed applicants from Northern Ireland by sex: 5 days after A level results day

Placed applicants: absolute change relative to 2014 cycle totals

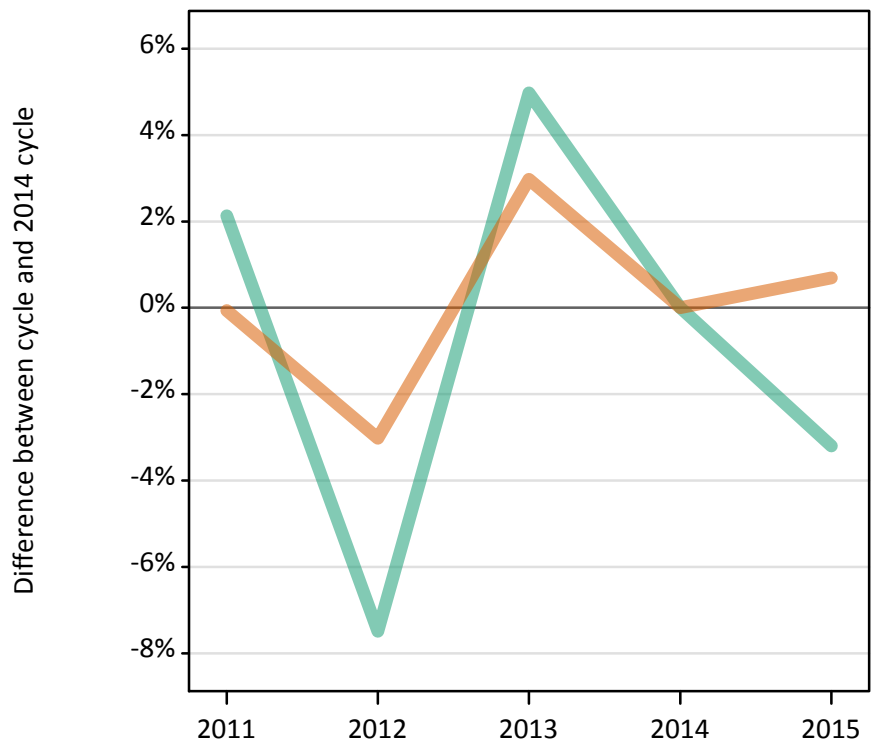
Applicant Status	Sex	2011	2012	2013	2014	2015
Placed	Men	-150	-720	20	0	-230
	Women	-280	-620	70	0	-10
	All	-430	-1,340	90	0	-250



### S.31 Placed 18 year old applicants from Northern Ireland by sex: 5 days after A level results day

Placed 18 year old applicants: change relative to 2014 cycle totals

Men  
Women



### S.32 Placed 18 year old applicants from Northern Ireland by sex: 5 days after A level results day

Applicant Status	Sex	2011	2012	2013	2014	2015
Placed	Men	3,450	3,120	3,550	3,380	3,270
	Women	4,460	4,330	4,600	4,470	4,500
	All	7,910	7,460	8,140	7,840	7,770

### S.33 Placed 18 year old applicants from Northern Ireland by sex: 5 days after A level results day

Placed 18 year old applicants: change relative to 2014 cycle totals

Applicant Status	Sex	2011	2012	2013	2014	2015
Placed	Men	2%	-7%	5%	0%	-3%
	Women	-0%	-3%	3%	0%	1%
	All	1%	-5%	4%	0%	-1%

### S.34 Placed 18 year old applicants from Northern Ireland by sex: 5 days after A level results day

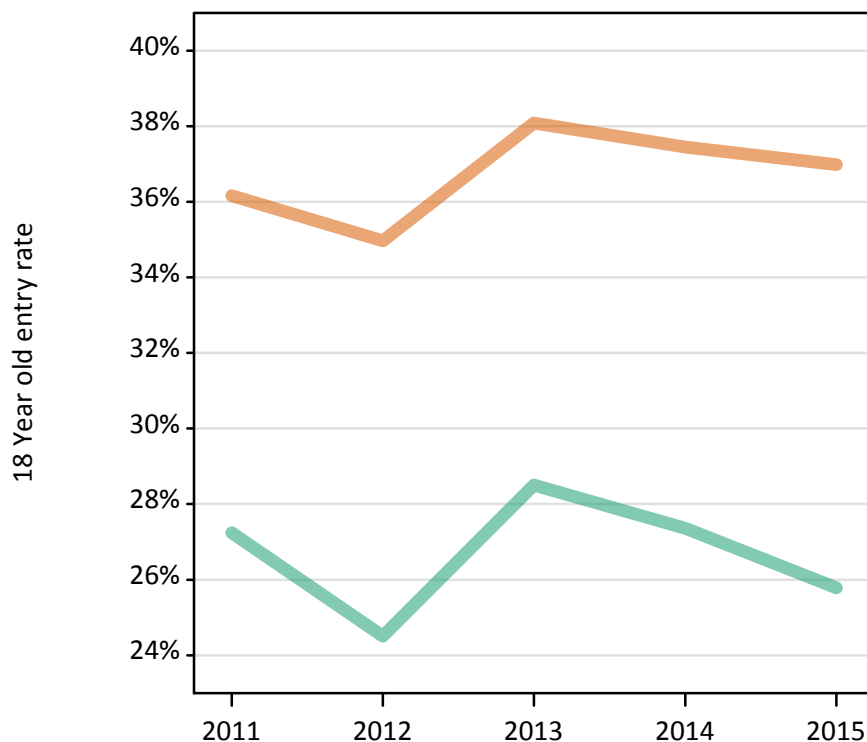
Placed 18 year old applicants: absolute change relative to 2014 cycle totals

Applicant Status	Sex	2011	2012	2013	2014	2015
Placed	Men	70	-250	170	0	-110
	Women	0	-140	130	0	30
	All	70	-390	300	0	-80

### S.35 Placed 18 year old applicants from Northern Ireland by sex: 5 days after A level results day

Placed 18 year old applicants: entry rate

Men  
Women



### S.36 Placed 18 year old applicants from Northern Ireland by sex: 5 days after A level results day

Placed 18 year old applicants: entry rate

Applicant Status	Sex	2011	2012	2013	2014	2015
Placed	Men	27.2%	24.5%	28.5%	27.4%	25.8%
	Women	36.2%	35.0%	38.1%	37.4%	37.0%
	All	31.6%	29.7%	33.2%	32.3%	31.3%

### S.37 Placed 18 year old applicants from Northern Ireland by sex: 5 days after A level results day

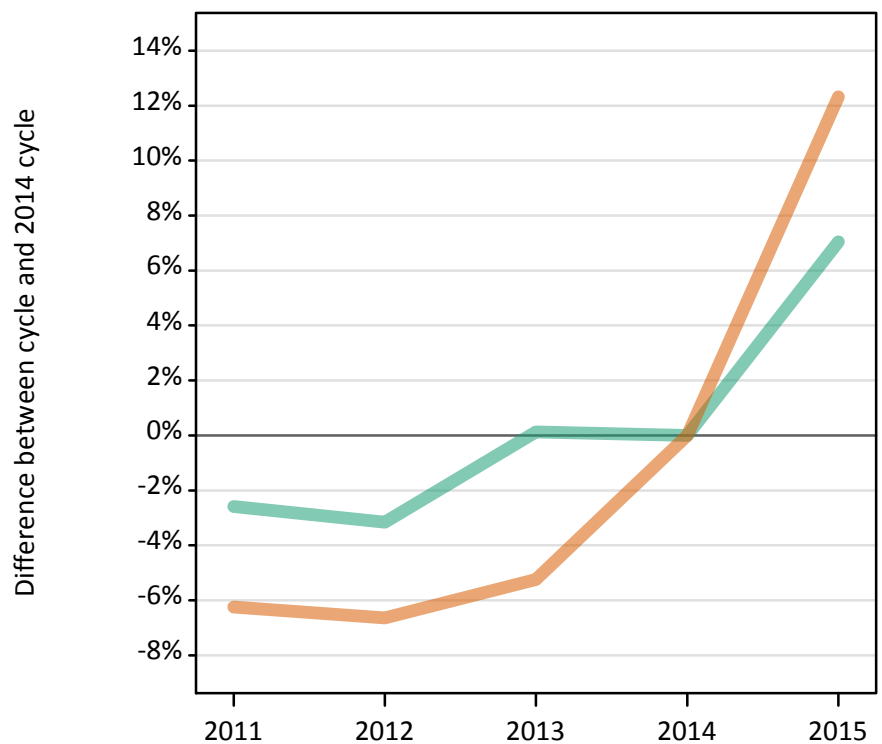
Placed 18 year old applicants: entry rate (indexed to 100 = Men)

Applicant Status	Sex	2011	2012	2013	2014	2015
Placed	Men	100	100	100	100	100
	Women	133	143	134	137	143

### S.38 Placed applicants from Scotland by sex: 5 days after A level results day

Placed applicants: change relative to 2014 cycle totals

Men  
Women



### S.39 Placed applicants from Scotland by sex: 5 days after A level results day

Applicant Status	Sex	2011	2012	2013	2014	2015
Placed	Men	11,520	11,450	11,840	11,820	12,660
	Women	15,640	15,570	15,800	16,680	18,730
	All	27,150	27,020	27,640	28,500	31,390

### S.40 Placed applicants from Scotland by sex: 5 days after A level results day

Placed applicants: change relative to 2014 cycle totals

Applicant Status	Sex	2011	2012	2013	2014	2015
Placed	Men	-3%	-3%	0%	0%	7%
	Women	-6%	-7%	-5%	0%	12%
	All	-5%	-5%	-3%	0%	10%

### S.41 Placed applicants from Scotland by sex: 5 days after A level results day

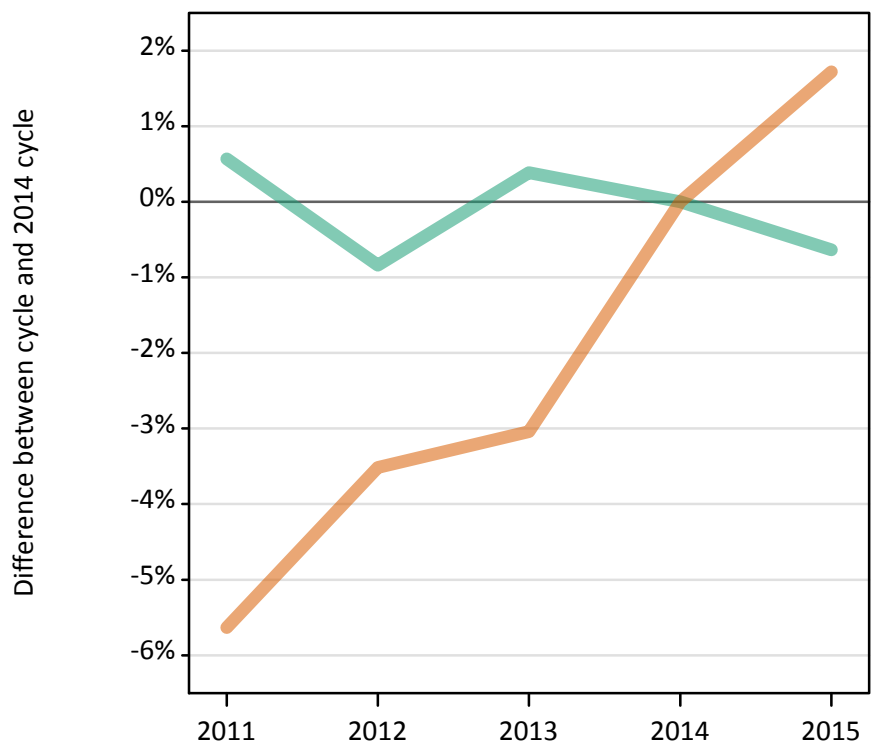
Placed applicants: absolute change relative to 2014 cycle totals

Applicant Status	Sex	2011	2012	2013	2014	2015
Placed	Men	-310	-370	20	0	830
	Women	-1,040	-1,110	-880	0	2,060
	All	-1,350	-1,480	-860	0	2,890

### S.42 Placed 18 year old applicants from Scotland by sex: 5 days after A level results day

Placed 18 year old applicants: change relative to 2014 cycle totals

Men  
Women



### S.43 Placed 18 year old applicants from Scotland by sex: 5 days after A level results day

Applicant Status	Sex	2011	2012	2013	2014	2015
Placed	Men	6,010	5,930	6,000	5,980	5,940
	Women	7,790	7,970	8,000	8,260	8,400
	All	13,800	13,890	14,010	14,230	14,340

### S.44 Placed 18 year old applicants from Scotland by sex: 5 days after A level results day

Placed 18 year old applicants: change relative to 2014 cycle totals

Applicant Status	Sex	2011	2012	2013	2014	2015
Placed	Men	1%	-1%	0%	0%	-1%
	Women	-6%	-4%	-3%	0%	2%
	All	-3%	-2%	-2%	0%	1%

### S.45 Placed 18 year old applicants from Scotland by sex: 5 days after A level results day

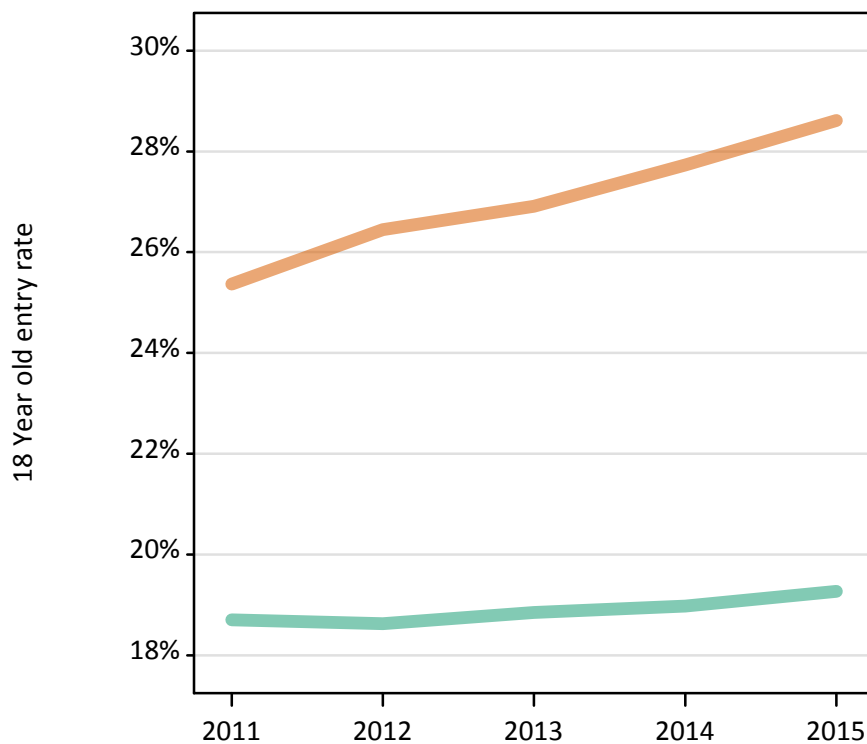
Placed 18 year old applicants: absolute change relative to 2014 cycle totals

Applicant Status	Sex	2011	2012	2013	2014	2015
Placed	Men	30	-50	20	0	-40
	Women	-470	-290	-250	0	140
	All	-430	-340	-230	0	100

### S.46 Placed 18 year old applicants from Scotland by sex: 5 days after A level results day

Placed 18 year old applicants: entry rate

Men  
Women



### S.47 Placed 18 year old applicants from Scotland by sex: 5 days after A level results day

Placed 18 year old applicants: entry rate

Applicant Status	Sex	2011	2012	2013	2014	2015
Placed	Men	18.7%	18.6%	18.9%	19.0%	19.3%
	Women	25.4%	26.4%	26.9%	27.7%	28.6%
	All	22.0%	22.4%	22.7%	23.2%	23.8%

### S.48 Placed 18 year old applicants from Scotland by sex: 5 days after A level results day

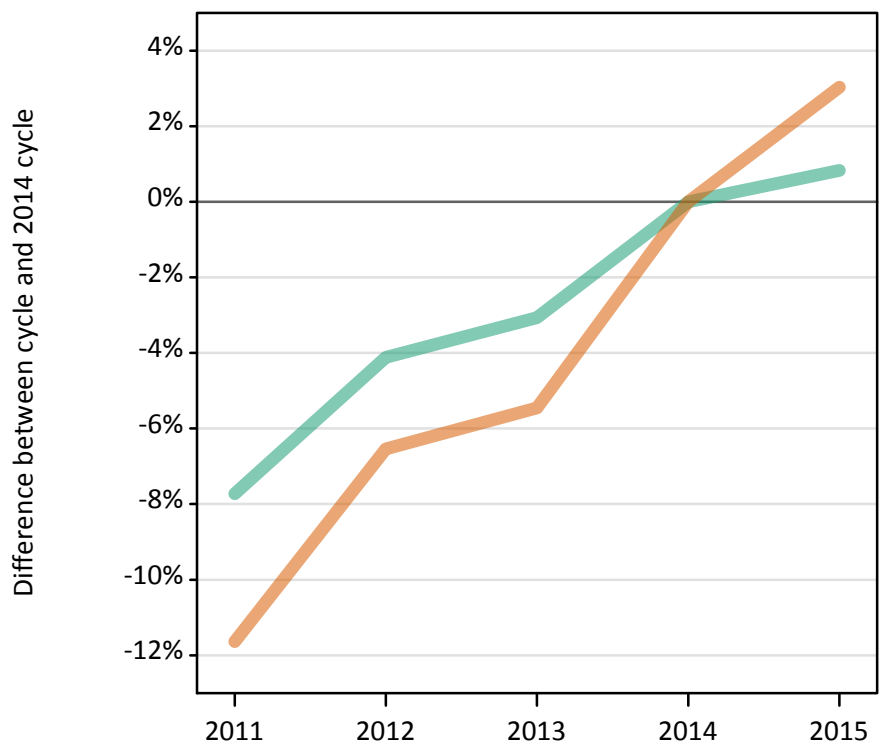
Placed 18 year old applicants: entry rate (indexed to 100 = Men)

Applicant Status	Sex	2011	2012	2013	2014	2015
Placed	Men	100	100	100	100	100
	Women	136	142	143	146	148

### S.49 Placed applicants from Wales by sex: 5 days after A level results day

Placed applicants: change relative to 2014 cycle totals

Men  
Women



### S.50 Placed applicants from Wales by sex: 5 days after A level results day

Applicant Status	Sex	2011	2012	2013	2014	2015
Placed	Men	7,020	7,290	7,370	7,600	7,670
	Women	9,140	9,670	9,780	10,340	10,660
	All	16,160	16,960	17,150	17,950	18,320

### S.51 Placed applicants from Wales by sex: 5 days after A level results day

Placed applicants: change relative to 2014 cycle totals

Applicant Status	Sex	2011	2012	2013	2014	2015
Placed	Men	-8%	-4%	-3%	0%	1%
	Women	-12%	-7%	-5%	0%	3%
	All	-10%	-6%	-4%	0%	2%

### S.52 Placed applicants from Wales by sex: 5 days after A level results day

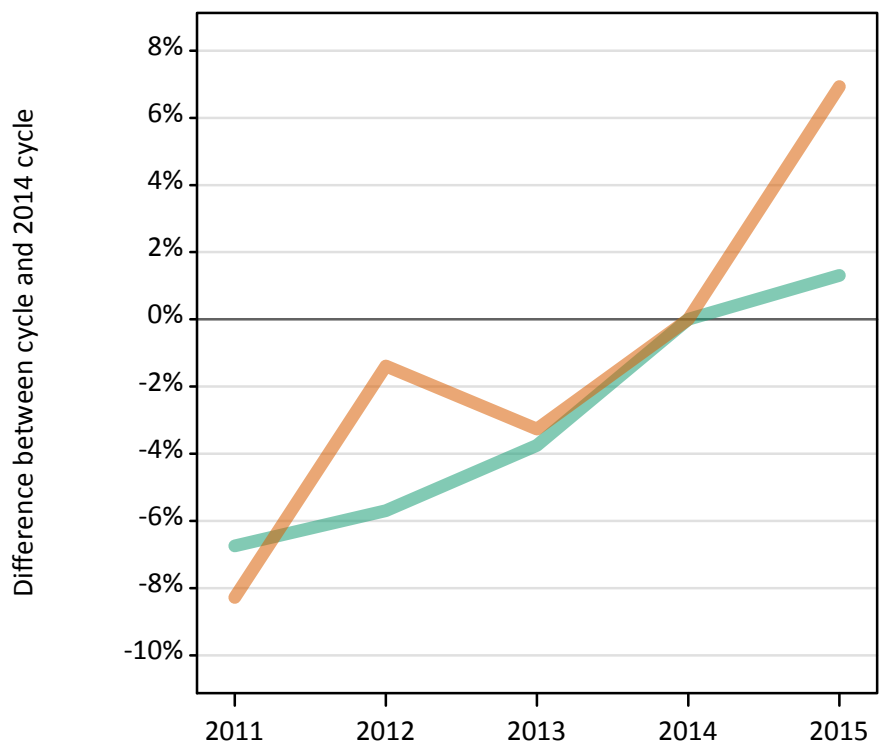
Placed applicants: absolute change relative to 2014 cycle totals

Applicant Status	Sex	2011	2012	2013	2014	2015
Placed	Men	-590	-310	-230	0	60
	Women	-1,200	-680	-560	0	310
	All	-1,790	-990	-800	0	380

### S.53 Placed 18 year old applicants from Wales by sex: 5 days after A level results day

Placed 18 year old applicants: change relative to 2014 cycle totals

Men  
Women



### S.54 Placed 18 year old applicants from Wales by sex: 5 days after A level results day

Applicant Status	Sex	2011	2012	2013	2014	2015
Placed	Men	3,930	3,970	4,060	4,210	4,270
	Women	5,080	5,470	5,360	5,540	5,930
	All	9,010	9,440	9,420	9,760	10,200

### S.55 Placed 18 year old applicants from Wales by sex: 5 days after A level results day

Placed 18 year old applicants: change relative to 2014 cycle totals

Applicant Status	Sex	2011	2012	2013	2014	2015
Placed	Men	-7%	-6%	-4%	0%	1%
	Women	-8%	-1%	-3%	0%	7%
	All	-8%	-3%	-3%	0%	4%

### S.56 Placed 18 year old applicants from Wales by sex: 5 days after A level results day

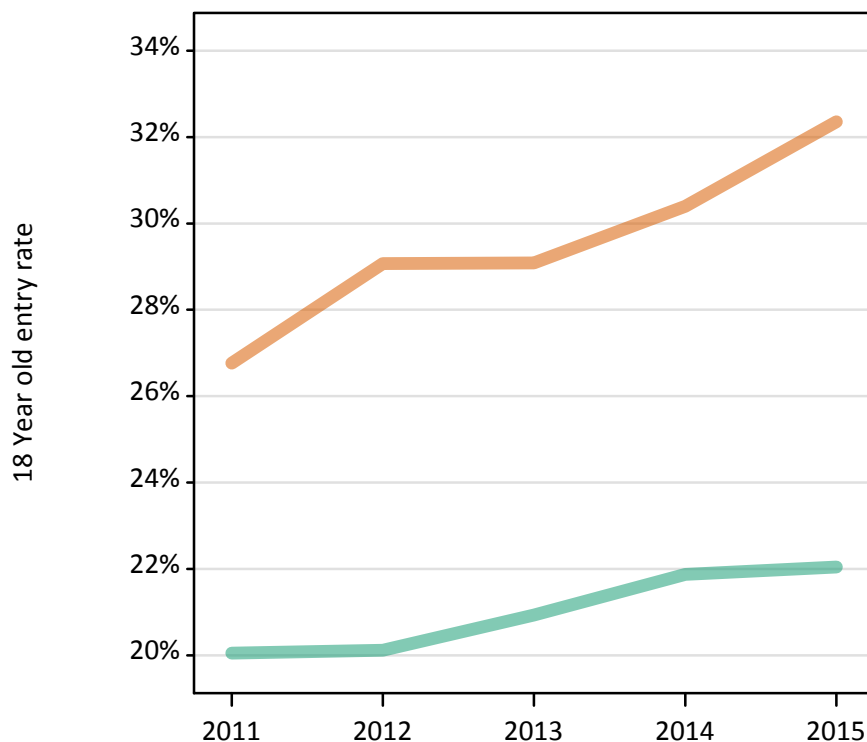
Placed 18 year old applicants: absolute change relative to 2014 cycle totals

Applicant Status	Sex	2011	2012	2013	2014	2015
Placed	Men	-280	-240	-160	0	60
	Women	-460	-80	-180	0	380
	All	-740	-320	-340	0	440

### S.57 Placed 18 year old applicants from Wales by sex: 5 days after A level results day

Placed 18 year old applicants: entry rate

Men  
Women



### S.58 Placed 18 year old applicants from Wales by sex: 5 days after A level results day

Placed 18 year old applicants: entry rate

Applicant Status	Sex	2011	2012	2013	2014	2015
Placed	Men	20.0%	20.1%	20.9%	21.9%	22.0%
	Women	26.8%	29.1%	29.1%	30.4%	32.4%
	All	23.4%	24.5%	24.9%	26.0%	27.1%

### S.59 Placed 18 year old applicants from Wales by sex: 5 days after A level results day

Placed 18 year old applicants: entry rate (indexed to 100 = Men)

Applicant Status	Sex	2011	2012	2013	2014	2015
Placed	Men	100	100	100	100	100
	Women	133	145	139	139	147



### S.60 Placed applicants from the EU (excluding the UK) by sex: 5 days after A level results day

Placed applicants: change relative to 2014 cycle totals

Men  
Women



### S.61 Placed applicants from the EU (excluding the UK) by sex: 5 days after A level results day

Applicant Status	Sex	2011	2012	2013	2014	2015
Placed	Men	10,580	8,970	9,540	10,050	10,960
	Women	13,020	11,380	12,130	13,440	15,030
	All	23,600	20,350	21,670	23,490	25,990

### S.62 Placed applicants from the EU (excluding the UK) by sex: 5 days after A level results day

Placed applicants: change relative to 2014 cycle totals

Applicant Status	Sex	2011	2012	2013	2014	2015
Placed	Men	5%	-11%	-5%	0%	9%
	Women	-3%	-15%	-10%	0%	12%
	All	0%	-13%	-8%	0%	11%

### S.63 Placed applicants from the EU (excluding the UK) by sex: 5 days after A level results day

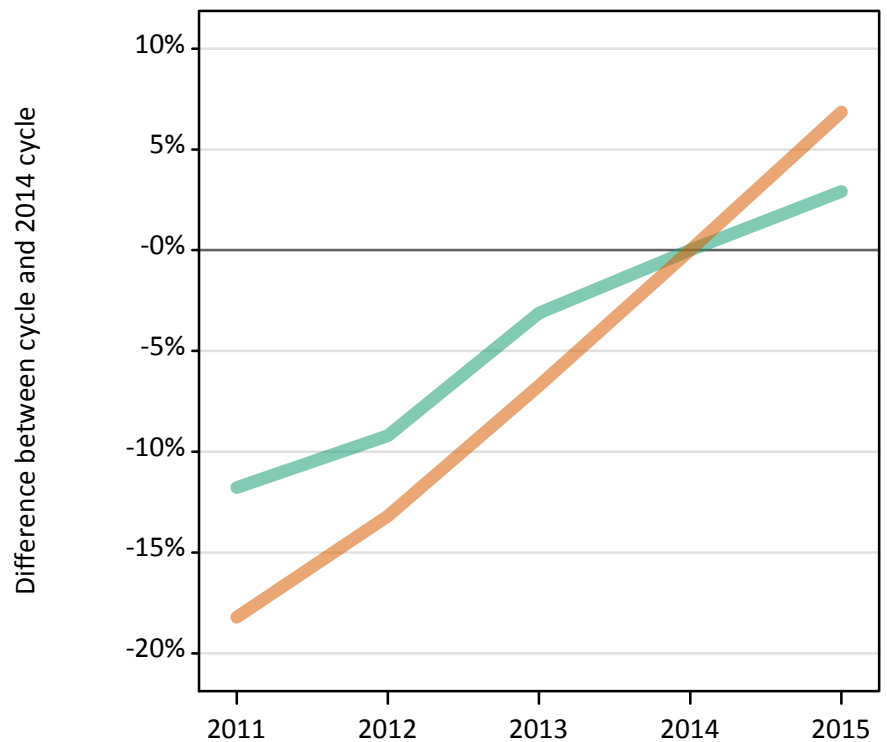
Placed applicants: absolute change relative to 2014 cycle totals

Applicant Status	Sex	2011	2012	2013	2014	2015
Placed	Men	520	-1,090	-510	0	910
	Women	-410	-2,060	-1,310	0	1,590
	All	110	-3,140	-1,820	0	2,500

### S.64 Placed applicants from overseas (not EU) by sex: 5 days after A level results day

Placed applicants: change relative to 2014 cycle totals

Men  
Women



### S.65 Placed applicants from overseas (not EU) by sex: 5 days after A level results day

Applicant Status	Sex	2011	2012	2013	2014	2015
Placed	Men	12,500	12,860	13,720	14,170	14,580
	Women	13,410	14,230	15,290	16,400	17,520
	All	25,910	27,100	29,020	30,560	32,100

### S.66 Placed applicants from overseas (not EU) by sex: 5 days after A level results day

Placed applicants: change relative to 2014 cycle totals

Applicant Status	Sex	2011	2012	2013	2014	2015
Placed	Men	-12%	-9%	-3%	0%	3%
	Women	-18%	-13%	-7%	0%	7%
	All	-15%	-11%	-5%	0%	5%

### S.67 Placed applicants from overseas (not EU) by sex: 5 days after A level results day

Placed applicants: absolute change relative to 2014 cycle totals

Applicant Status	Sex	2011	2012	2013	2014	2015
Placed	Men	-1,670	-1,310	-440	0	410
	Women	-2,990	-2,160	-1,100	0	1,120
	All	-4,650	-3,470	-1,550	0	1,540