

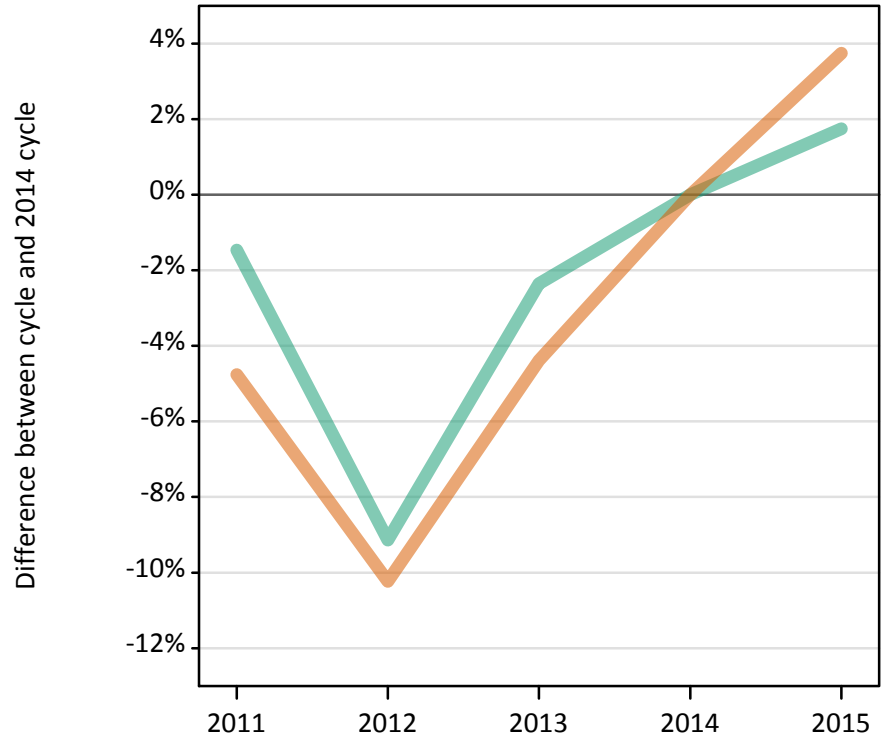
Daily Clearing Analysis: Sex

Analysis at 00:05 on Wednesday 19 August 2015 (6 days after A level results day - No Scot.X1)

SX.1 Placed applicants from all domiciles by sex: 6 days after A level results day

Placed applicants: change relative to 2014 cycle totals

Men
Women



SX.2 Placed applicants from all domiciles by sex: 6 days after A level results day

Applicant Status	Sex	2011	2012	2013	2014	2015
Placed	Men	197,570	182,200	195,790	200,520	204,020
	Women	241,540	227,640	242,480	253,600	263,100
	All	439,110	409,840	438,270	454,120	467,110

SX.3 Placed applicants from all domiciles by sex: 6 days after A level results day

Placed applicants: change relative to 2014 cycle totals

Applicant Status	Sex	2011	2012	2013	2014	2015
Placed	Men	-1%	-9%	-2%	0%	2%
	Women	-5%	-10%	-4%	0%	4%
	All	-3%	-10%	-3%	0%	3%

SX.4 Placed applicants from all domiciles by sex: 6 days after A level results day

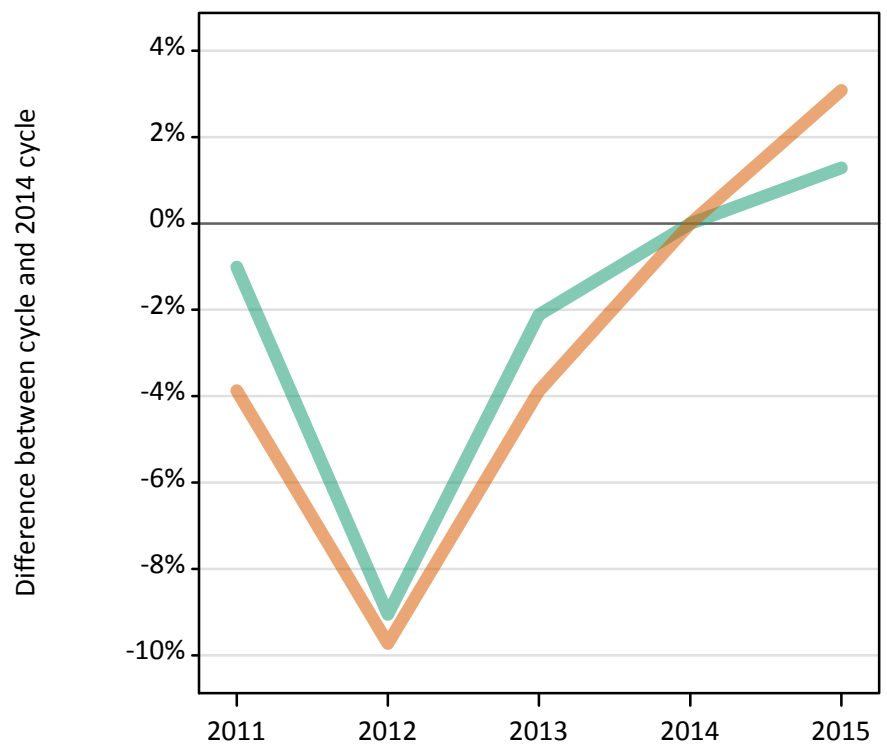
Placed applicants: absolute change relative to 2014 cycle totals

Applicant Status	Sex	2011	2012	2013	2014	2015
Placed	Men	-2,950	-18,320	-4,730	0	3,500
	Women	-12,060	-25,960	-11,130	0	9,500
	All	-15,010	-44,280	-15,850	0	13,000

SX.5 Placed applicants from the UK by sex: 6 days after A level results day

Placed applicants: change relative to 2014 cycle totals

Men
Women



SX.6 Placed applicants from the UK by sex: 6 days after A level results day

Applicant Status	Sex	2011	2012	2013	2014	2015
Placed	Men	174,030	159,890	172,090	175,810	178,070
	Women	214,650	201,580	214,640	223,310	230,180
	All	388,690	361,470	386,730	399,110	408,240

SX.7 Placed applicants from the UK by sex: 6 days after A level results day

Placed applicants: change relative to 2014 cycle totals

Applicant Status	Sex	2011	2012	2013	2014	2015
Placed	Men	-1%	-9%	-2%	0%	1%
	Women	-4%	-10%	-4%	0%	3%
	All	-3%	-9%	-3%	0%	2%

SX.8 Placed applicants from the UK by sex: 6 days after A level results day

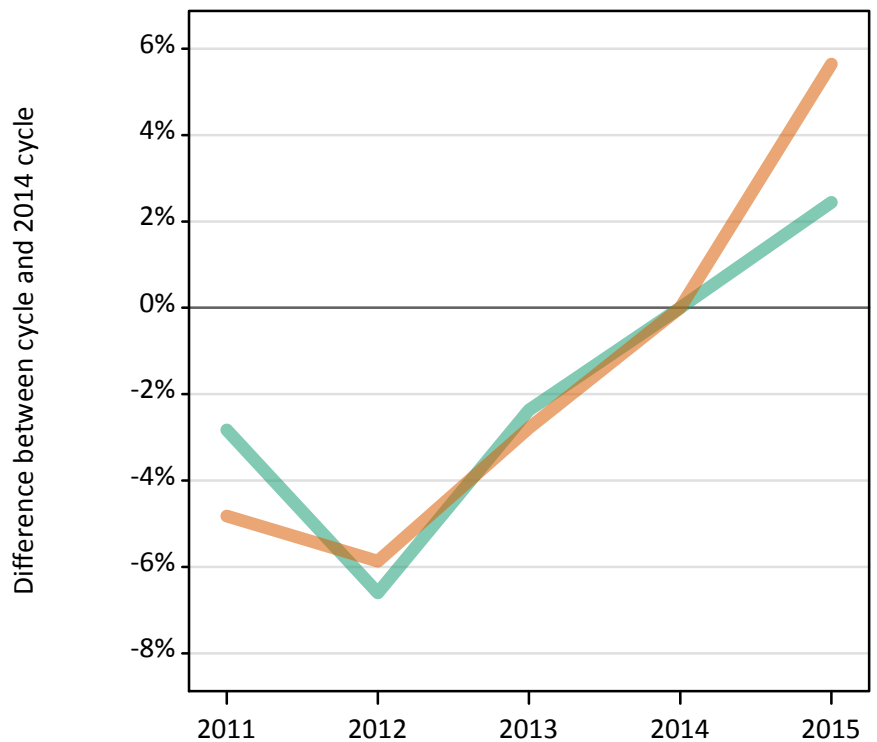
Placed applicants: absolute change relative to 2014 cycle totals

Applicant Status	Sex	2011	2012	2013	2014	2015
Placed	Men	-1,780	-15,920	-3,710	0	2,260
	Women	-8,650	-21,730	-8,660	0	6,870
	All	-10,430	-37,640	-12,380	0	9,130

SX.9 Placed 18 year old applicants from the UK by sex: 6 days after A level results day

Placed 18 year old applicants: change relative to 2014 cycle totals

Men
Women



SX.10 Placed 18 year old applicants from the UK by sex: 6 days after A level results day

Applicant Status	Sex	2011	2012	2013	2014	2015
Placed	Men	94,300	90,640	94,750	97,040	99,420
	Women	115,410	114,140	117,880	121,260	128,100
	All	209,710	204,780	212,630	218,300	227,520

SX.11 Placed 18 year old applicants from the UK by sex: 6 days after A level results day

Placed 18 year old applicants: change relative to 2014 cycle totals

Applicant Status	Sex	2011	2012	2013	2014	2015
Placed	Men	-3%	-7%	-2%	0%	2%
	Women	-5%	-6%	-3%	0%	6%
	All	-4%	-6%	-3%	0%	4%

SX.12 Placed 18 year old applicants from the UK by sex: 6 days after A level results day

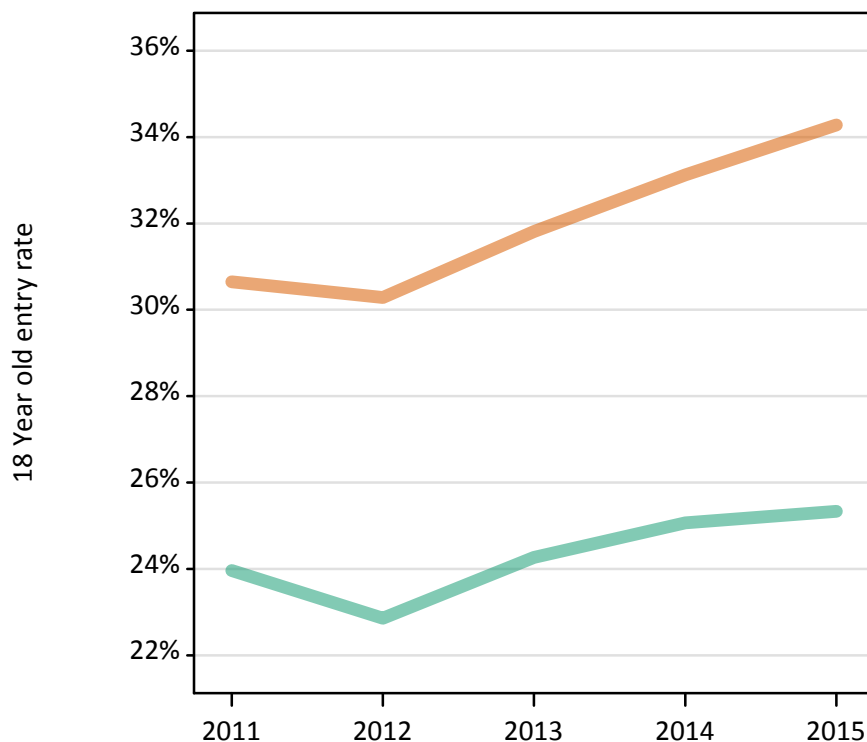
Placed 18 year old applicants: absolute change relative to 2014 cycle totals

Applicant Status	Sex	2011	2012	2013	2014	2015
Placed	Men	-2,750	-6,410	-2,300	0	2,370
	Women	-5,850	-7,120	-3,380	0	6,850
	All	-8,590	-13,520	-5,670	0	9,220

SX.13 Placed 18 year old applicants from the UK by sex: 6 days after A level results day

Placed 18 year old applicants: entry rate

Men
Women



SX.14 Placed 18 year old applicants from the UK by sex: 6 days after A level results day

Placed 18 year old applicants: entry rate

Applicant Status	Sex	2011	2012	2013	2014	2015
Placed	Men	24.0%	22.9%	24.3%	25.1%	25.3%
	Women	30.6%	30.3%	31.8%	33.1%	34.3%
	All	27.2%	26.5%	27.9%	29.0%	29.7%

SX.15 Placed 18 year old applicants from the UK by sex: 6 days after A level results day

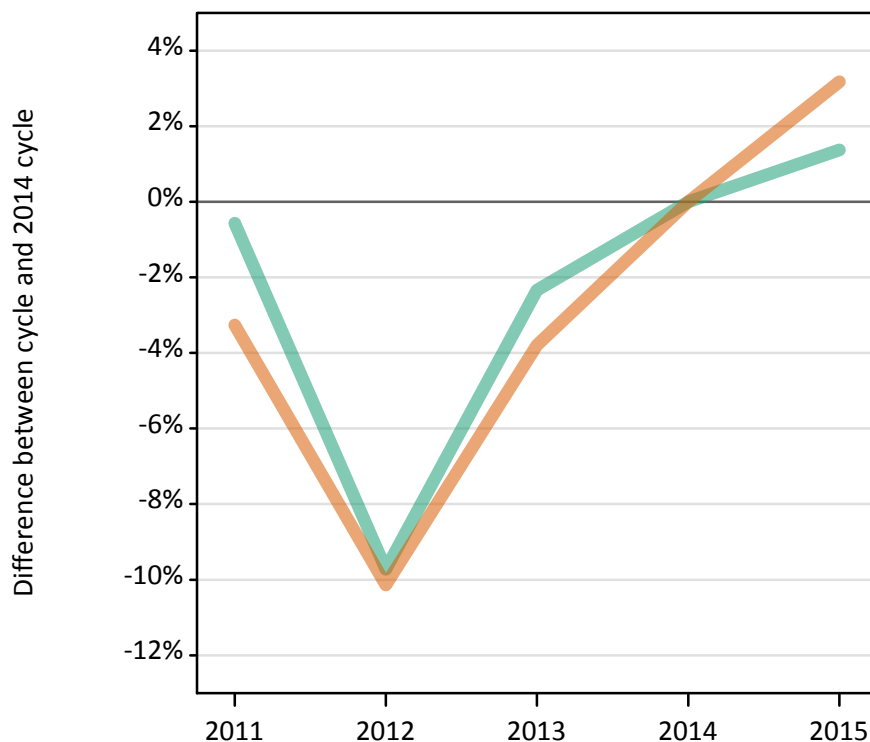
Placed 18 year old applicants: entry rate (indexed to 100 = Men)

Applicant Status	Sex	2011	2012	2013	2014	2015
Placed	Men	100	100	100	100	100
	Women	128	132	131	132	135

SX.16 Placed applicants from England by sex: 6 days after A level results day

Placed applicants: change relative to 2014 cycle totals

Men
Women



SX.17 Placed applicants from England by sex: 6 days after A level results day

Applicant Status	Sex	2011	2012	2013	2014	2015
Placed	Men	149,570	135,790	146,890	150,410	152,480
	Women	183,110	170,080	182,090	189,270	195,290
	All	332,670	305,860	328,980	339,680	347,770

SX.18 Placed applicants from England by sex: 6 days after A level results day

Placed applicants: change relative to 2014 cycle totals

Applicant Status	Sex	2011	2012	2013	2014	2015
Placed	Men	-1%	-10%	-2%	0%	1%
	Women	-3%	-10%	-4%	0%	3%
	All	-2%	-10%	-3%	0%	2%

SX.19 Placed applicants from England by sex: 6 days after A level results day

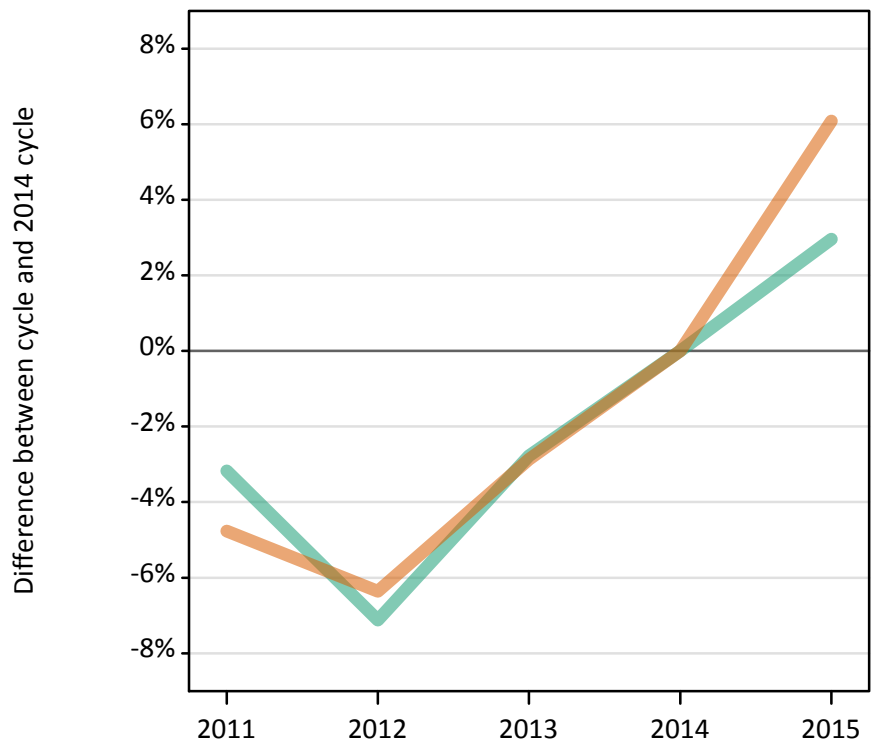
Placed applicants: absolute change relative to 2014 cycle totals

Applicant Status	Sex	2011	2012	2013	2014	2015
Placed	Men	-850	-14,630	-3,520	0	2,070
	Women	-6,170	-19,200	-7,180	0	6,020
	All	-7,010	-33,820	-10,700	0	8,090

SX.20 Placed 18 year old applicants from England by sex: 6 days after A level results day

Placed 18 year old applicants: change relative to 2014 cycle totals

Men
Women



SX.21 Placed 18 year old applicants from England by sex: 6 days after A level results day

Applicant Status	Sex	2011	2012	2013	2014	2015
Placed	Men	80,750	77,450	81,080	83,400	85,860
	Women	98,250	96,600	100,210	103,170	109,450
	All	178,990	174,060	181,290	186,560	195,310

SX.22 Placed 18 year old applicants from England by sex: 6 days after A level results day

Placed 18 year old applicants: change relative to 2014 cycle totals

Applicant Status	Sex	2011	2012	2013	2014	2015
Placed	Men	-3%	-7%	-3%	0%	3%
	Women	-5%	-6%	-3%	0%	6%
	All	-4%	-7%	-3%	0%	5%

SX.23 Placed 18 year old applicants from England by sex: 6 days after A level results day

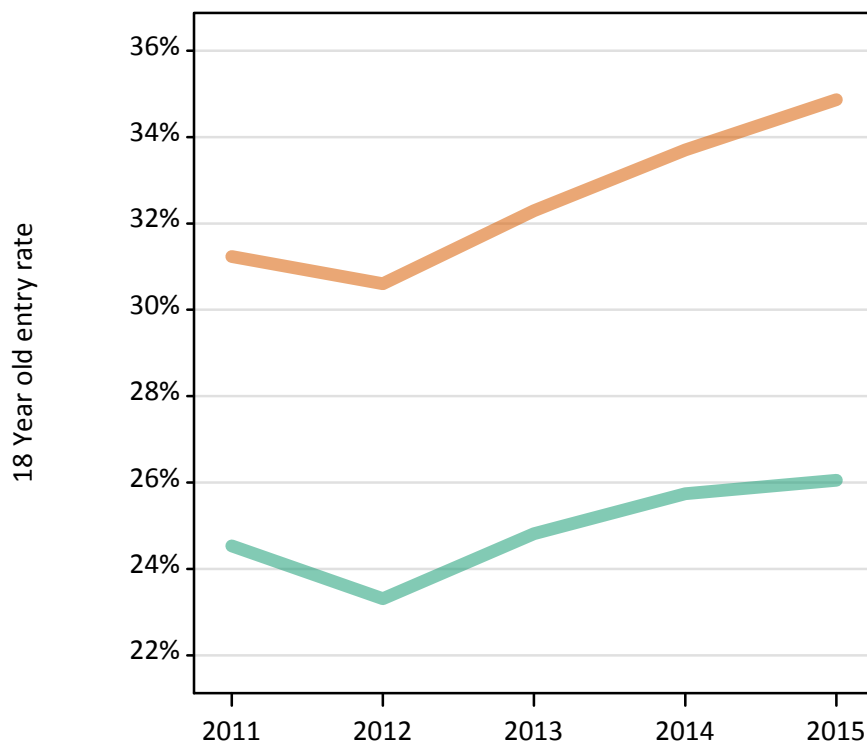
Placed 18 year old applicants: absolute change relative to 2014 cycle totals

Applicant Status	Sex	2011	2012	2013	2014	2015
Placed	Men	-2,650	-5,940	-2,310	0	2,470
	Women	-4,920	-6,570	-2,960	0	6,280
	All	-7,570	-12,510	-5,270	0	8,750

SX.24 Placed 18 year old applicants from England by sex: 6 days after A level results day

Placed 18 year old applicants: entry rate

Men
Women



SX.25 Placed 18 year old applicants from England by sex: 6 days after A level results day

Placed 18 year old applicants: entry rate

Applicant Status	Sex	2011	2012	2013	2014	2015
Placed	Men	24.5%	23.3%	24.8%	25.7%	26.1%
	Women	31.2%	30.6%	32.3%	33.7%	34.9%
	All	27.8%	26.9%	28.5%	29.6%	30.4%

SX.26 Placed 18 year old applicants from England by sex: 6 days after A level results day

Placed 18 year old applicants: entry rate (indexed to 100 = Men)

Applicant Status	Sex	2011	2012	2013	2014	2015
Placed	Men	100	100	100	100	100
	Women	127	131	130	131	134

SX.27 Placed applicants from Northern Ireland by sex: 6 days after A level results day

Placed applicants: change relative to 2014 cycle totals

Men
Women



SX.28 Placed applicants from Northern Ireland by sex: 6 days after A level results day

Applicant Status	Sex	2011	2012	2013	2014	2015
Placed	Men	5,780	5,230	5,910	5,920	5,670
	Women	6,990	6,610	7,280	7,270	7,230
	All	12,770	11,840	13,190	13,190	12,900

SX.29 Placed applicants from Northern Ireland by sex: 6 days after A level results day

Placed applicants: change relative to 2014 cycle totals

Applicant Status	Sex	2011	2012	2013	2014	2015
Placed	Men	-2%	-12%	-0%	0%	-4%
	Women	-4%	-9%	0%	0%	-0%
	All	-3%	-10%	0%	0%	-2%

SX.30 Placed applicants from Northern Ireland by sex: 6 days after A level results day

Placed applicants: absolute change relative to 2014 cycle totals

Applicant Status	Sex	2011	2012	2013	2014	2015
Placed	Men	-140	-690	-10	0	-260
	Women	-280	-650	20	0	-40
	All	-410	-1,340	10	0	-290

SX.31 Placed 18 year old applicants from Northern Ireland by sex: 6 days after A level results day

Placed 18 year old applicants: change relative to 2014 cycle totals

Men
Women



SX.32 Placed 18 year old applicants from Northern Ireland by sex: 6 days after A level results day

Applicant Status	Sex	2011	2012	2013	2014	2015
Placed	Men	3,560	3,240	3,610	3,470	3,350
	Women	4,540	4,390	4,620	4,540	4,590
	All	8,100	7,630	8,230	8,010	7,940

SX.33 Placed 18 year old applicants from Northern Ireland by sex: 6 days after A level results day

Placed 18 year old applicants: change relative to 2014 cycle totals

Applicant Status	Sex	2011	2012	2013	2014	2015
Placed	Men	2%	-7%	4%	0%	-4%
	Women	0%	-3%	2%	0%	1%
	All	1%	-5%	3%	0%	-1%

SX.34 Placed 18 year old applicants from Northern Ireland by sex: 6 days after A level results day

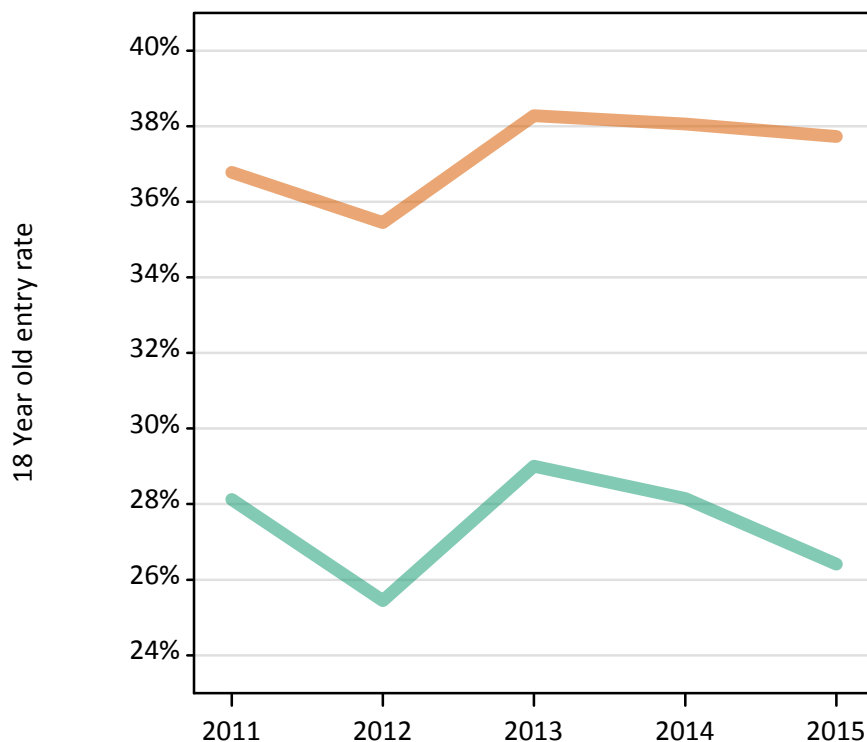
Placed 18 year old applicants: absolute change relative to 2014 cycle totals

Applicant Status	Sex	2011	2012	2013	2014	2015
Placed	Men	90	-230	130	0	-130
	Women	0	-150	80	0	50
	All	90	-380	220	0	-80

SX.35 Placed 18 year old applicants from Northern Ireland by sex: 6 days after A level results day

Placed 18 year old applicants: entry rate

Men
Women



SX.36 Placed 18 year old applicants from Northern Ireland by sex: 6 days after A level results day

Placed 18 year old applicants: entry rate

Applicant Status	Sex	2011	2012	2013	2014	2015
Placed	Men	28.1%	25.4%	29.0%	28.1%	26.4%
	Women	36.8%	35.4%	38.3%	38.1%	37.7%
	All	32.4%	30.4%	33.6%	33.0%	31.9%

SX.37 Placed 18 year old applicants from Northern Ireland by sex: 6 days after A level results day

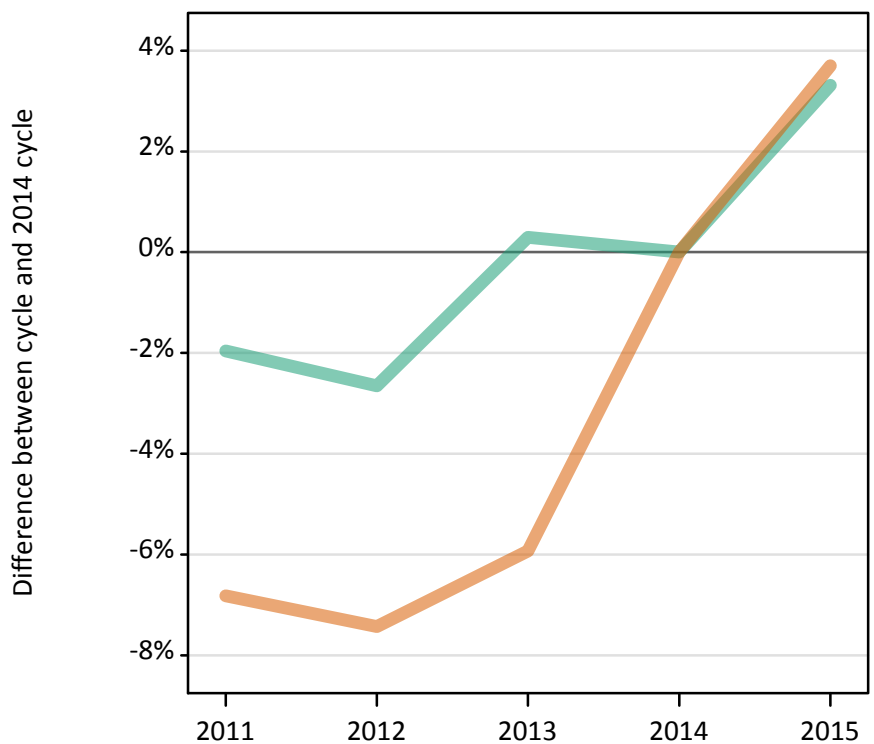
Placed 18 year old applicants: entry rate (indexed to 100 = Men)

Applicant Status	Sex	2011	2012	2013	2014	2015
Placed	Men	100	100	100	100	100
	Women	131	139	132	135	143

SX.38 Placed applicants from Scotland by sex: 6 days after A level results day

Placed applicants: change relative to 2014 cycle totals

Men
Women



SX.39 Placed applicants from Scotland by sex: 6 days after A level results day

Applicant Status	Sex	2011	2012	2013	2014	2015
Placed	Men	11,560	11,480	11,830	11,790	12,180
	Women	15,190	15,090	15,330	16,300	16,900
	All	26,750	26,570	27,160	28,090	29,090

SX.40 Placed applicants from Scotland by sex: 6 days after A level results day

Placed applicants: change relative to 2014 cycle totals

Applicant Status	Sex	2011	2012	2013	2014	2015
Placed	Men	-2%	-3%	0%	0%	3%
	Women	-7%	-7%	-6%	0%	4%
	All	-5%	-5%	-3%	0%	4%

SX.41 Placed applicants from Scotland by sex: 6 days after A level results day

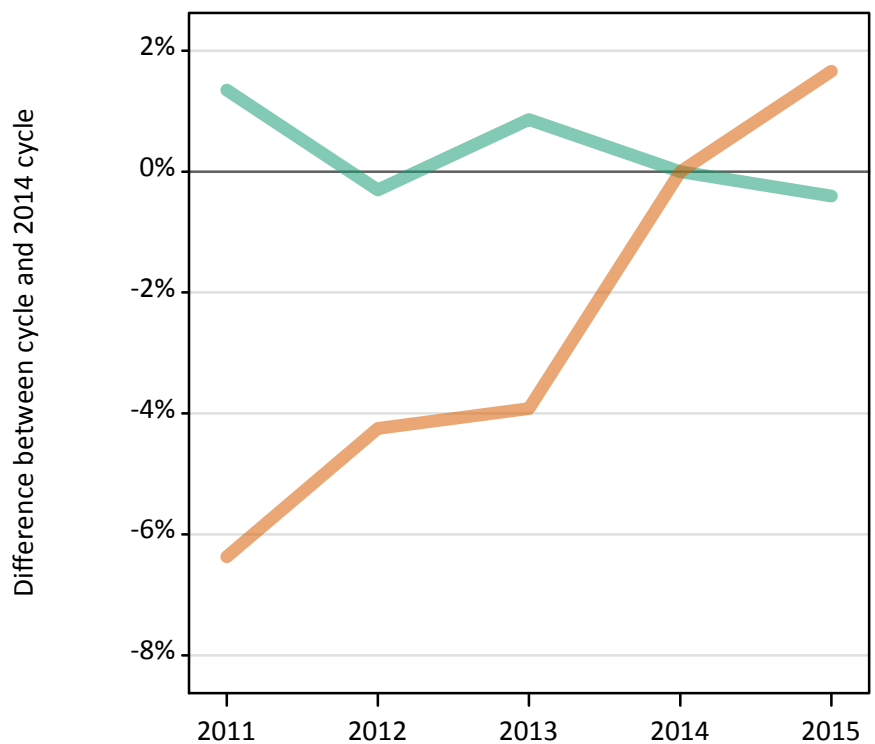
Placed applicants: absolute change relative to 2014 cycle totals

Applicant Status	Sex	2011	2012	2013	2014	2015
Placed	Men	-230	-310	40	0	390
	Women	-1,110	-1,210	-970	0	600
	All	-1,340	-1,520	-930	0	990

SX.42 Placed 18 year old applicants from Scotland by sex: 6 days after A level results day

Placed 18 year old applicants: change relative to 2014 cycle totals

Men
Women



SX.43 Placed 18 year old applicants from Scotland by sex: 6 days after A level results day

Applicant Status	Sex	2011	2012	2013	2014	2015
Placed	Men	6,010	5,910	5,980	5,930	5,910
	Women	7,450	7,620	7,650	7,960	8,090
	All	13,460	13,530	13,630	13,890	14,000

SX.44 Placed 18 year old applicants from Scotland by sex: 6 days after A level results day

Placed 18 year old applicants: change relative to 2014 cycle totals

Applicant Status	Sex	2011	2012	2013	2014	2015
Placed	Men	1%	-0%	1%	0%	-0%
	Women	-6%	-4%	-4%	0%	2%
	All	-3%	-3%	-2%	0%	1%

SX.45 Placed 18 year old applicants from Scotland by sex: 6 days after A level results day

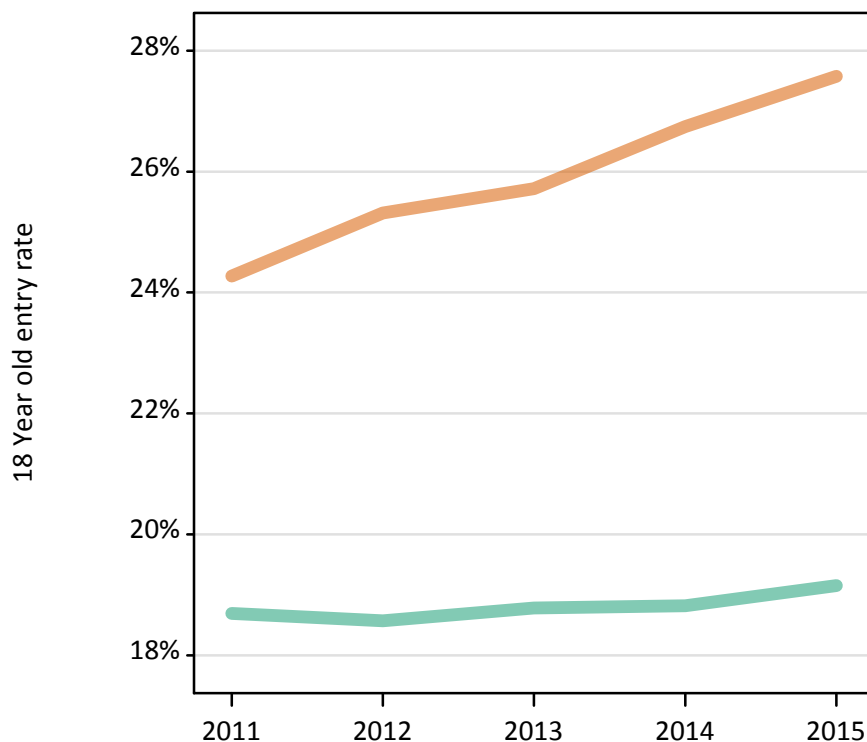
Placed 18 year old applicants: absolute change relative to 2014 cycle totals

Applicant Status	Sex	2011	2012	2013	2014	2015
Placed	Men	80	-20	50	0	-20
	Women	-510	-340	-310	0	130
	All	-430	-360	-260	0	110

SX.46 Placed 18 year old applicants from Scotland by sex: 6 days after A level results day

Placed 18 year old applicants: entry rate

Men
Women



SX.47 Placed 18 year old applicants from Scotland by sex: 6 days after A level results day

Placed 18 year old applicants: entry rate

Applicant Status	Sex	2011	2012	2013	2014	2015
Placed	Men	18.7%	18.6%	18.8%	18.8%	19.2%
	Women	24.3%	25.3%	25.7%	26.7%	27.6%
	All	21.4%	21.8%	22.1%	22.7%	23.3%

SX.48 Placed 18 year old applicants from Scotland by sex: 6 days after A level results day

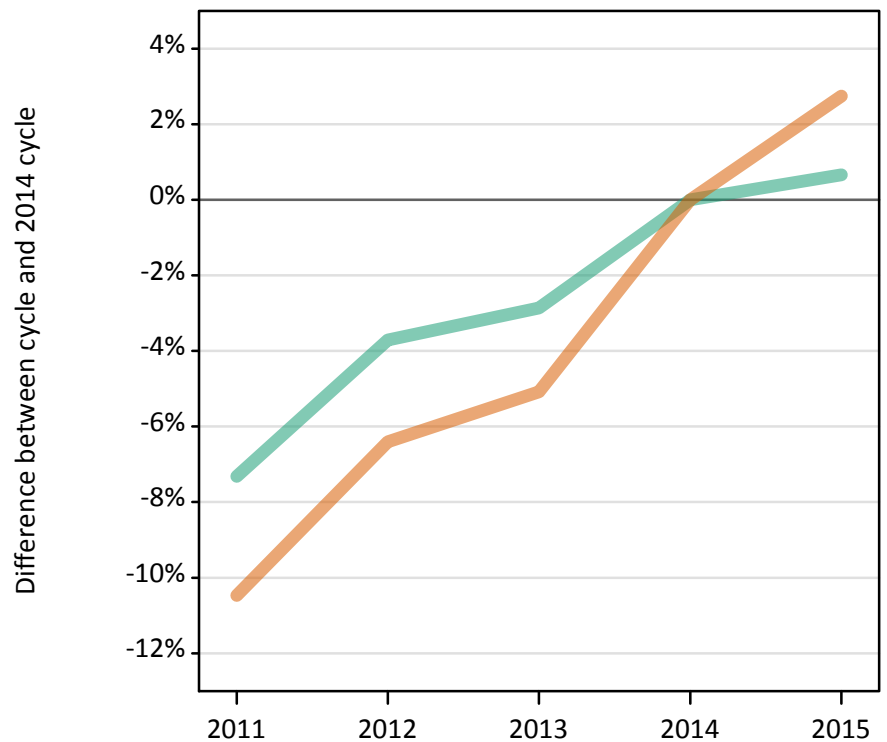
Placed 18 year old applicants: entry rate (indexed to 100 = Men)

Applicant Status	Sex	2011	2012	2013	2014	2015
Placed	Men	100	100	100	100	100
	Women	130	136	137	142	144

SX.49 Placed applicants from Wales by sex: 6 days after A level results day

Placed applicants: change relative to 2014 cycle totals

Men
Women



SX.50 Placed applicants from Wales by sex: 6 days after A level results day

Applicant Status	Sex	2011	2012	2013	2014	2015
Placed	Men	7,120	7,400	7,460	7,680	7,730
	Women	9,370	9,800	9,940	10,470	10,760
	All	16,490	17,190	17,400	18,150	18,490

SX.51 Placed applicants from Wales by sex: 6 days after A level results day

Placed applicants: change relative to 2014 cycle totals

Applicant Status	Sex	2011	2012	2013	2014	2015
Placed	Men	-7%	-4%	-3%	0%	1%
	Women	-10%	-6%	-5%	0%	3%
	All	-9%	-5%	-4%	0%	2%

SX.52 Placed applicants from Wales by sex: 6 days after A level results day

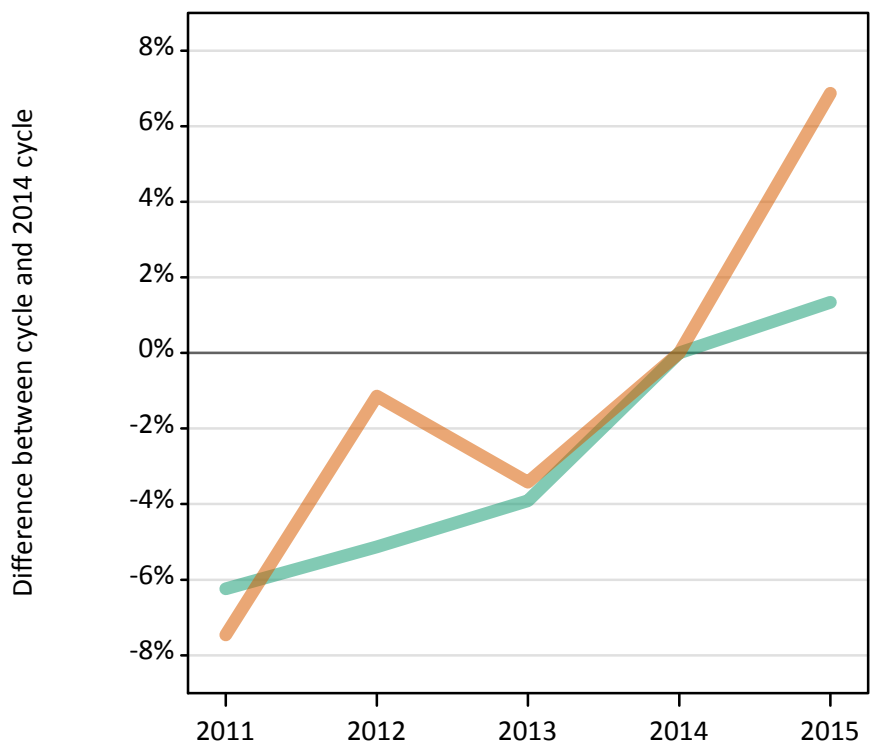
Placed applicants: absolute change relative to 2014 cycle totals

Applicant Status	Sex	2011	2012	2013	2014	2015
Placed	Men	-560	-290	-220	0	50
	Women	-1,100	-670	-530	0	290
	All	-1,660	-960	-750	0	340

SX.53 Placed 18 year old applicants from Wales by sex: 6 days after A level results day

Placed 18 year old applicants: change relative to 2014 cycle totals

Men
Women



SX.54 Placed 18 year old applicants from Wales by sex: 6 days after A level results day

Applicant Status	Sex	2011	2012	2013	2014	2015
Placed	Men	3,980	4,030	4,080	4,250	4,300
	Women	5,170	5,530	5,400	5,590	5,970
	All	9,150	9,550	9,480	9,840	10,280

SX.55 Placed 18 year old applicants from Wales by sex: 6 days after A level results day

Placed 18 year old applicants: change relative to 2014 cycle totals

Applicant Status	Sex	2011	2012	2013	2014	2015
Placed	Men	-6%	-5%	-4%	0%	1%
	Women	-7%	-1%	-3%	0%	7%
	All	-7%	-3%	-4%	0%	4%

SX.56 Placed 18 year old applicants from Wales by sex: 6 days after A level results day

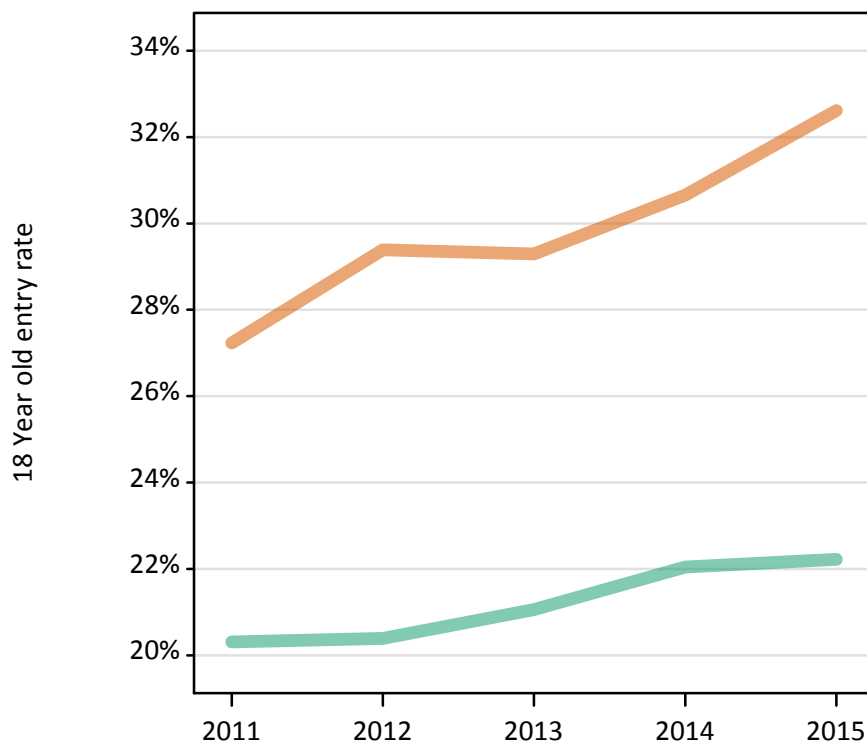
Placed 18 year old applicants: absolute change relative to 2014 cycle totals

Applicant Status	Sex	2011	2012	2013	2014	2015
Placed	Men	-270	-220	-170	0	60
	Women	-420	-60	-190	0	380
	All	-680	-280	-360	0	440

SX.57 Placed 18 year old applicants from Wales by sex: 6 days after A level results day

Placed 18 year old applicants: entry rate

Men
Women



SX.58 Placed 18 year old applicants from Wales by sex: 6 days after A level results day

Placed 18 year old applicants: entry rate

Applicant Status	Sex	2011	2012	2013	2014	2015
Placed	Men	20.3%	20.4%	21.1%	22.0%	22.2%
	Women	27.2%	29.4%	29.3%	30.7%	32.6%
	All	23.7%	24.8%	25.1%	26.2%	27.3%

SX.59 Placed 18 year old applicants from Wales by sex: 6 days after A level results day

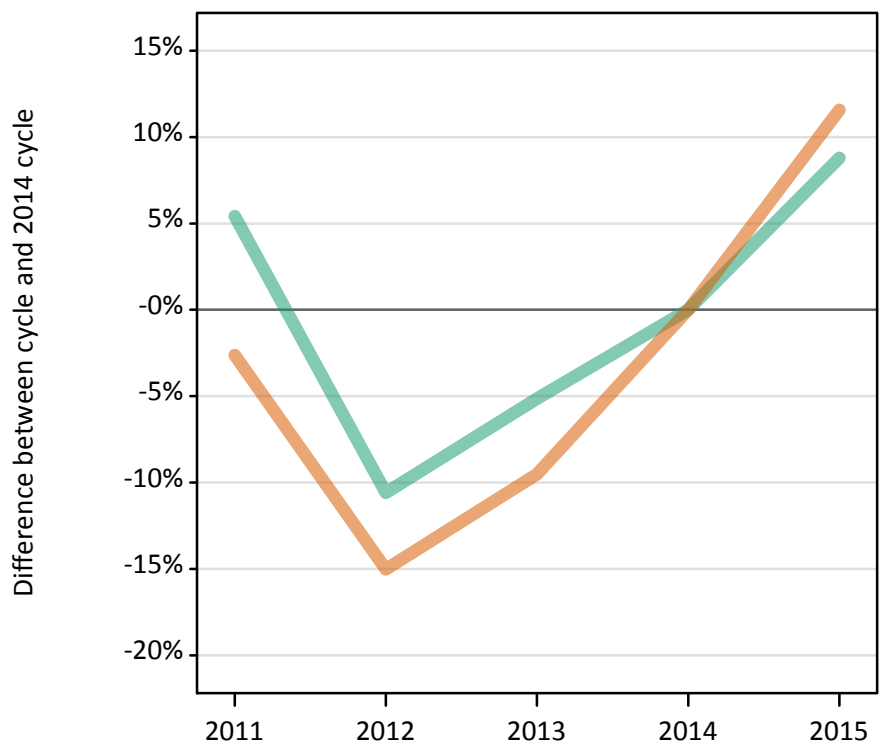
Placed 18 year old applicants: entry rate (indexed to 100 = Men)

Applicant Status	Sex	2011	2012	2013	2014	2015
Placed	Men	100	100	100	100	100
	Women	134	144	139	139	147

SX.60 Placed applicants from the EU (excluding the UK) by sex: 6 days after A level results day

Placed applicants: change relative to 2014 cycle totals

Men
Women



SX.61 Placed applicants from the EU (excluding the UK) by sex: 6 days after A level results day

Applicant Status	Sex	2011	2012	2013	2014	2015
Placed	Men	10,740	9,110	9,660	10,190	11,080
	Women	13,230	11,540	12,290	13,580	15,160
	All	23,960	20,650	21,950	23,770	26,240

SX.62 Placed applicants from the EU (excluding the UK) by sex: 6 days after A level results day

Placed applicants: change relative to 2014 cycle totals

Applicant Status	Sex	2011	2012	2013	2014	2015
Placed	Men	5%	-11%	-5%	0%	9%
	Women	-3%	-15%	-10%	0%	12%
	All	1%	-13%	-8%	0%	10%

SX.63 Placed applicants from the EU (excluding the UK) by sex: 6 days after A level results day

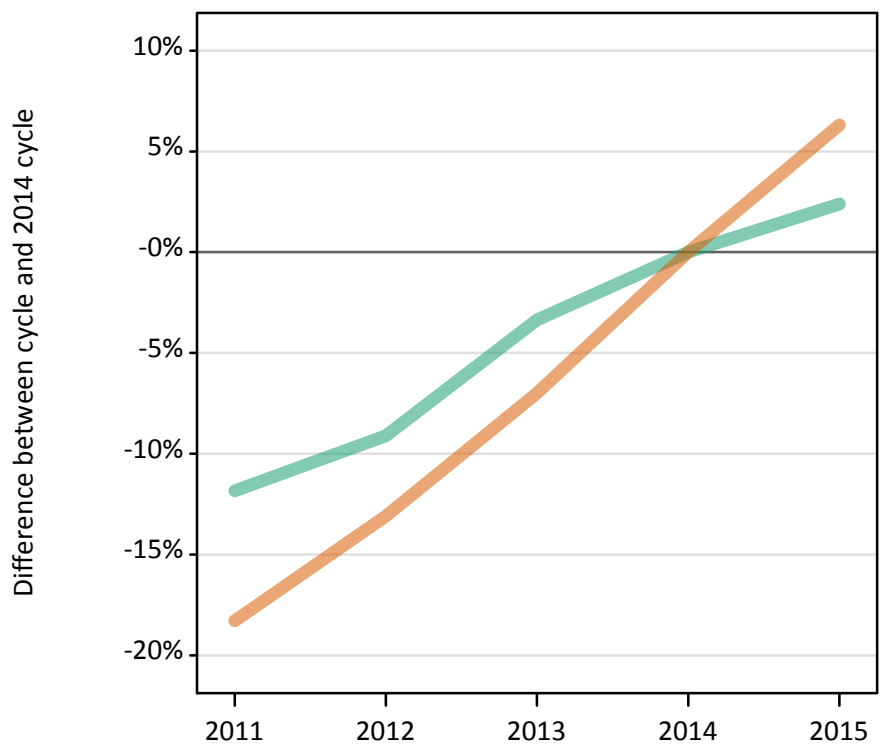
Placed applicants: absolute change relative to 2014 cycle totals

Applicant Status	Sex	2011	2012	2013	2014	2015
Placed	Men	550	-1,080	-520	0	900
	Women	-360	-2,040	-1,290	0	1,570
	All	190	-3,120	-1,820	0	2,470

SX.64 Placed applicants from overseas (not EU) by sex: 6 days after A level results day

Placed applicants: change relative to 2014 cycle totals

Men
Women



SX.65 Placed applicants from overseas (not EU) by sex: 6 days after A level results day

Applicant Status	Sex	2011	2012	2013	2014	2015
Placed	Men	12,800	13,200	14,040	14,520	14,870
	Women	13,660	14,530	15,540	16,710	17,770
	All	26,460	27,720	29,580	31,240	32,640

SX.66 Placed applicants from overseas (not EU) by sex: 6 days after A level results day

Placed applicants: change relative to 2014 cycle totals

Applicant Status	Sex	2011	2012	2013	2014	2015
Placed	Men	-12%	-9%	-3%	0%	2%
	Women	-18%	-13%	-7%	0%	6%
	All	-15%	-11%	-5%	0%	4%

SX.67 Placed applicants from overseas (not EU) by sex: 6 days after A level results day

Placed applicants: absolute change relative to 2014 cycle totals

Applicant Status	Sex	2011	2012	2013	2014	2015
Placed	Men	-1,720	-1,320	-490	0	350
	Women	-3,060	-2,190	-1,170	0	1,060
	All	-4,780	-3,510	-1,660	0	1,400