

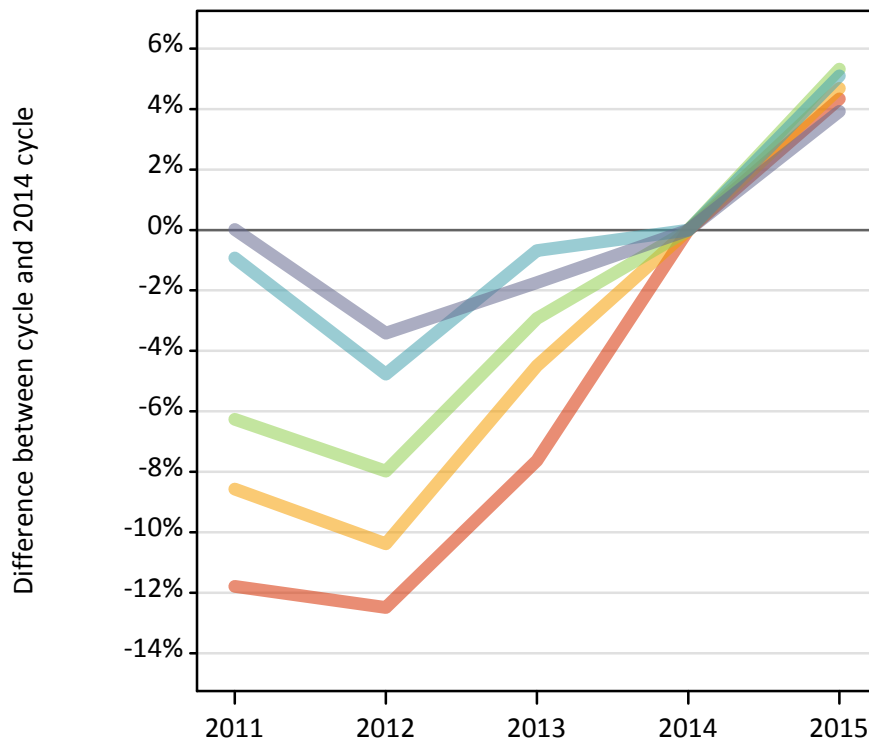
Daily Clearing Analysis: POLAR3

Analysis at 00:05 on Wednesday 19 August 2015 (6 days after A level results day - No Scot.X1)

PX.1 Placed 18 year old applicants from England by POLAR3 quintile: 6 days after A level results day

Placed 18 year old applicants: change relative to 2014 cycle totals

- Quintile 1
- Quintile 2
- Quintile 3
- Quintile 4
- Quintile 5



PX.2 Placed 18 year old applicants from England by POLAR3 quintile: 6 days after A level results day

Applicant Status	POLAR3	2011	2012	2013	2014	2015
Placed	Quintile 1	18,050	17,910	18,900	20,460	21,350
	Quintile 2	26,410	25,890	27,590	28,890	30,250
	Quintile 3	34,250	33,630	35,470	36,540	38,490
	Quintile 4	42,490	40,840	42,600	42,890	45,070
	Quintile 5	57,460	55,480	56,450	57,450	59,700

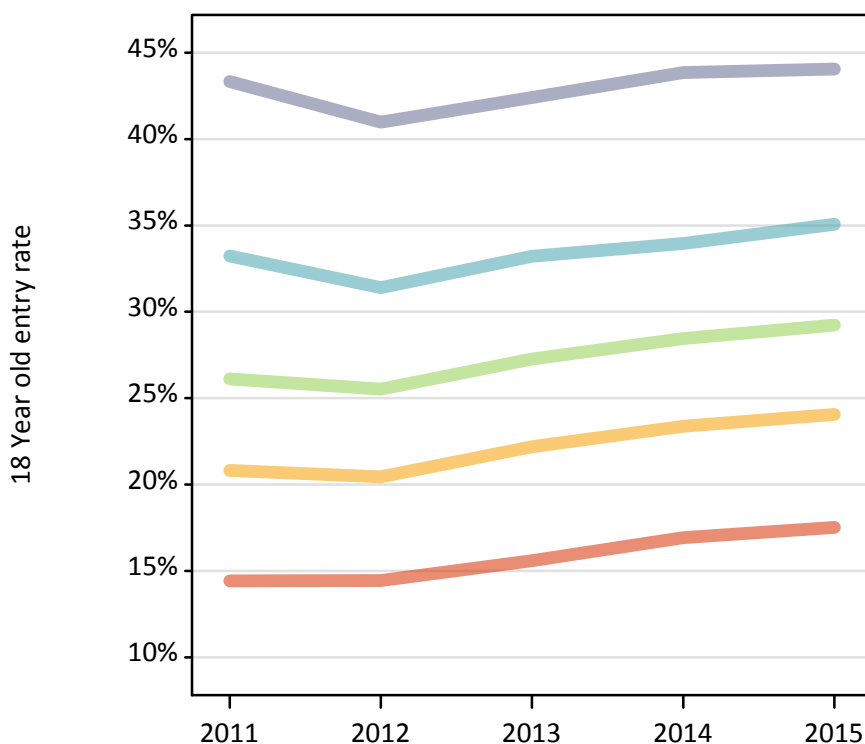
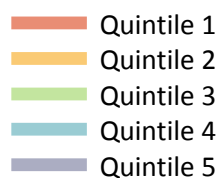
PX.3 Placed 18 year old applicants from England by POLAR3 quintile: 6 days after A level results day

Placed 18 year old applicants: change relative to 2014 cycle totals

Applicant Status	POLAR3	2011	2012	2013	2014	2015
Placed	Quintile 1	-12%	-12%	-8%	0%	4%
	Quintile 2	-9%	-10%	-4%	0%	5%
	Quintile 3	-6%	-8%	-3%	0%	5%
	Quintile 4	-1%	-5%	-1%	0%	5%
	Quintile 5	0%	-3%	-2%	0%	4%

PX.4 Placed 18 year old applicants from England by POLAR3 quintile: 6 days after A level results day

Placed 18 year old applicants: entry rate



PX.5 Placed 18 year old applicants from England by POLAR3 quintile: 6 days after A level results day

Placed 18 year old applicants: entry rate

Applicant Status	POLAR3	2011	2012	2013	2014	2015
Placed	Quintile 1	14.4%	14.4%	15.6%	16.9%	17.5%
	Quintile 2	20.8%	20.4%	22.2%	23.4%	24.1%
	Quintile 3	26.1%	25.5%	27.3%	28.5%	29.2%
	Quintile 4	33.2%	31.4%	33.2%	34.0%	35.1%
	Quintile 5	43.3%	41.0%	42.4%	43.8%	44.0%

PX.6 Placed 18 year old applicants from England by POLAR3 quintile: 6 days after A level results day

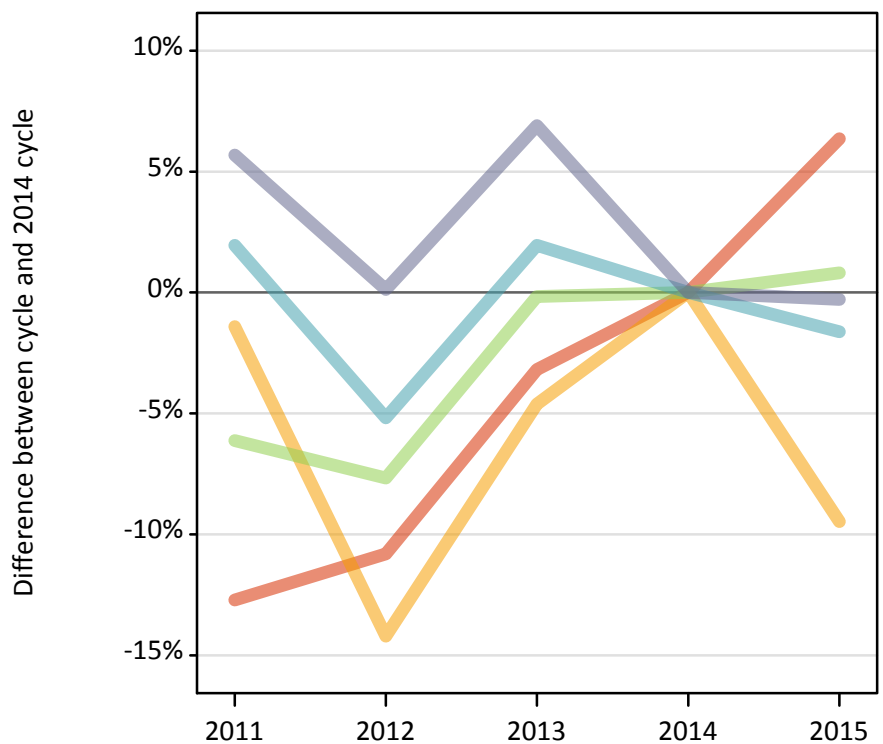
Placed 18 year old applicants: entry rate (indexed to 100 = Quintile 1)

Applicant Status	POLAR3	2011	2012	2013	2014	2015
Placed	Quintile 1	100	100	100	100	100
	Quintile 2	144	142	142	138	137
	Quintile 3	181	177	175	168	167
	Quintile 4	230	217	213	201	200
	Quintile 5	301	284	272	259	252

PX.7 Placed 18 year old applicants from Northern Ireland by POLAR3 quintile: 6 days after A level results day

Placed 18 year old applicants: change relative to 2014 cycle totals

- Quintile 1
- Quintile 2
- Quintile 3
- Quintile 4
- Quintile 5



PX.8 Placed 18 year old applicants from Northern Ireland by POLAR3 quintile: 6 days after A level results day

Applicant Status	POLAR3	2011	2012	2013	2014	2015
Placed	Quintile 1	410	420	460	470	500
	Quintile 2	770	670	750	780	710
	Quintile 3	1,150	1,130	1,220	1,230	1,240
	Quintile 4	2,460	2,290	2,460	2,410	2,370
	Quintile 5	3,290	3,120	3,330	3,110	3,110

PX.9 Placed 18 year old applicants from Northern Ireland by POLAR3 quintile: 6 days after A level results day

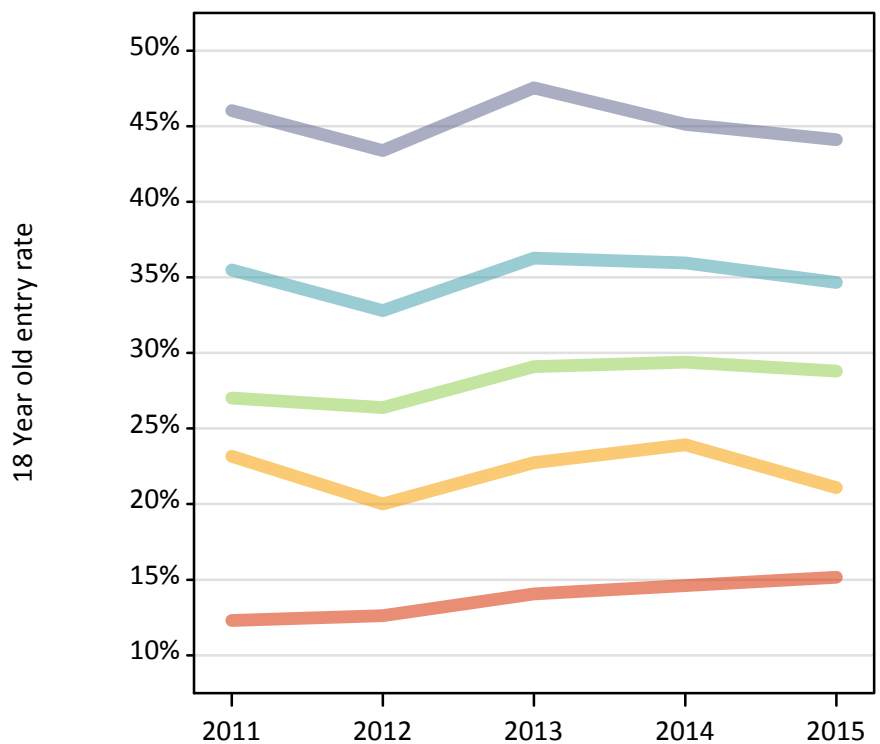
Placed 18 year old applicants: change relative to 2014 cycle totals

Applicant Status	POLAR3	2011	2012	2013	2014	2015
Placed	Quintile 1	-13%	-11%	-3%	0%	6%
	Quintile 2	-1%	-14%	-5%	0%	-9%
	Quintile 3	-6%	-8%	-0%	0%	1%
	Quintile 4	2%	-5%	2%	0%	-2%
	Quintile 5	6%	0%	7%	0%	-0%

PX.10 Placed 18 year old applicants from Northern Ireland by POLAR3 quintile: 6 days after A level results day

Placed 18 year old applicants: entry rate

- Quintile 1
- Quintile 2
- Quintile 3
- Quintile 4
- Quintile 5



PX.11 Placed 18 year old applicants from Northern Ireland by POLAR3 quintile: 6 days after A level results day

Placed 18 year old applicants: entry rate

Applicant Status	POLAR3	2011	2012	2013	2014	2015
Placed	Quintile 1	12.3%	12.6%	14.1%	14.6%	15.1%
	Quintile 2	23.2%	20.0%	22.7%	23.9%	21.1%
	Quintile 3	27.0%	26.4%	29.1%	29.4%	28.8%
	Quintile 4	35.5%	32.8%	36.3%	36.0%	34.7%
	Quintile 5	46.0%	43.4%	47.5%	45.1%	44.1%

PX.12 Placed 18 year old applicants from Northern Ireland by POLAR3 quintile: 6 days after A level results day

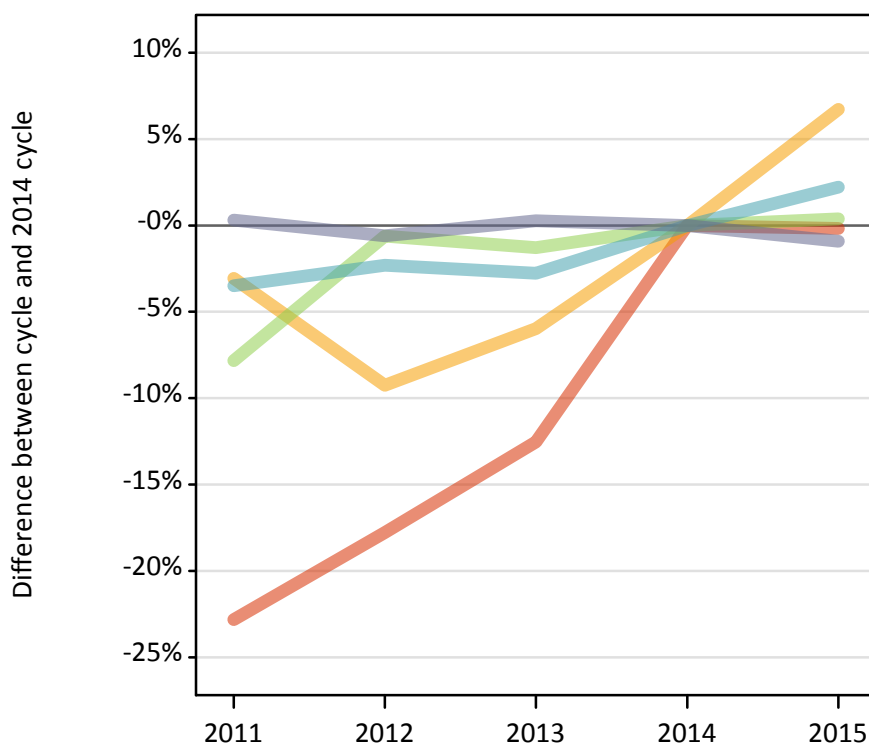
Placed 18 year old applicants: entry rate (indexed to 100 = Quintile 1)

Applicant Status	POLAR3	2011	2012	2013	2014	2015
Placed	Quintile 1	100	100	100	100	100
	Quintile 2	188	159	162	164	139
	Quintile 3	219	209	207	201	190
	Quintile 4	288	260	258	246	229
	Quintile 5	374	344	338	309	291

PX.13 Placed 18 year old applicants from Scotland by POLAR3 quintile: 6 days after A level results day

Placed 18 year old applicants: change relative to 2014 cycle totals

- Quintile 1
- Quintile 2
- Quintile 3
- Quintile 4
- Quintile 5



PX.14 Placed 18 year old applicants from Scotland by POLAR3 quintile: 6 days after A level results day

Applicant Status	POLAR3	2011	2012	2013	2014	2015
Placed	Quintile 1	440	470	500	570	570
	Quintile 2	1,300	1,220	1,260	1,340	1,430
	Quintile 3	1,940	2,100	2,080	2,110	2,120
	Quintile 4	3,150	3,190	3,170	3,260	3,330
	Quintile 5	6,590	6,530	6,590	6,570	6,510

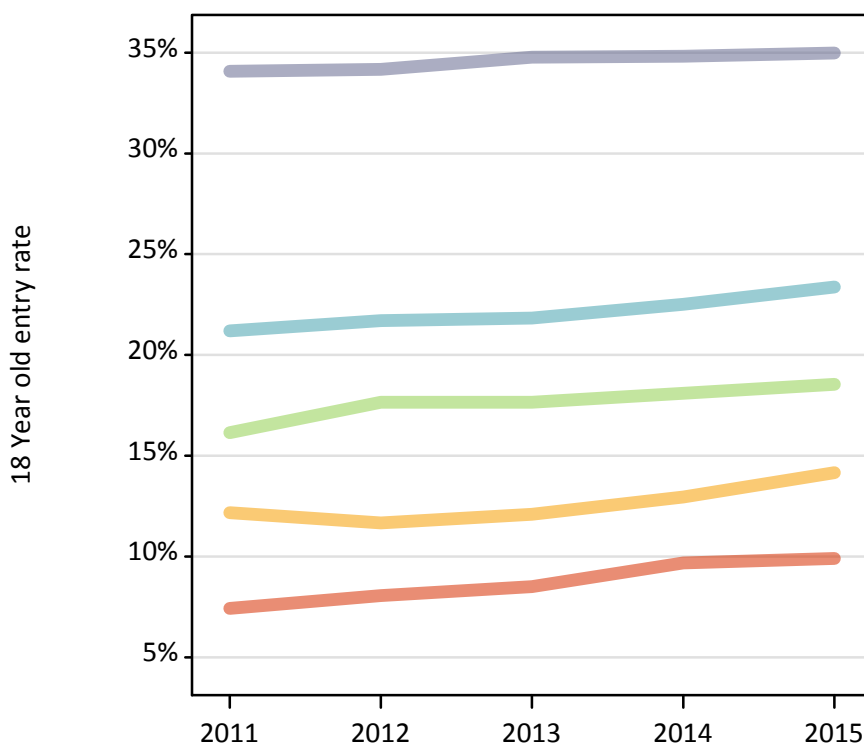
PX.15 Placed 18 year old applicants from Scotland by POLAR3 quintile: 6 days after A level results day

Placed 18 year old applicants: change relative to 2014 cycle totals

Applicant Status	POLAR3	2011	2012	2013	2014	2015
Placed	Quintile 1	-23%	-18%	-13%	0%	-0%
	Quintile 2	-3%	-9%	-6%	0%	7%
	Quintile 3	-8%	-1%	-1%	0%	0%
	Quintile 4	-3%	-2%	-3%	0%	2%
	Quintile 5	0%	-1%	0%	0%	-1%

PX.16 Placed 18 year old applicants from Scotland by POLAR3 quintile: 6 days after A level results day

Placed 18 year old applicants: entry rate



PX.17 Placed 18 year old applicants from Scotland by POLAR3 quintile: 6 days after A level results day

Placed 18 year old applicants: entry rate

Applicant Status	POLAR3	2011	2012	2013	2014	2015
Placed	Quintile 1	7.4%	8.1%	8.5%	9.7%	9.9%
	Quintile 2	12.2%	11.7%	12.1%	13.0%	14.2%
	Quintile 3	16.1%	17.7%	17.7%	18.1%	18.5%
	Quintile 4	21.2%	21.7%	21.8%	22.5%	23.4%
	Quintile 5	34.1%	34.2%	34.8%	34.8%	35.0%

PX.18 Placed 18 year old applicants from Scotland by POLAR3 quintile: 6 days after A level results day

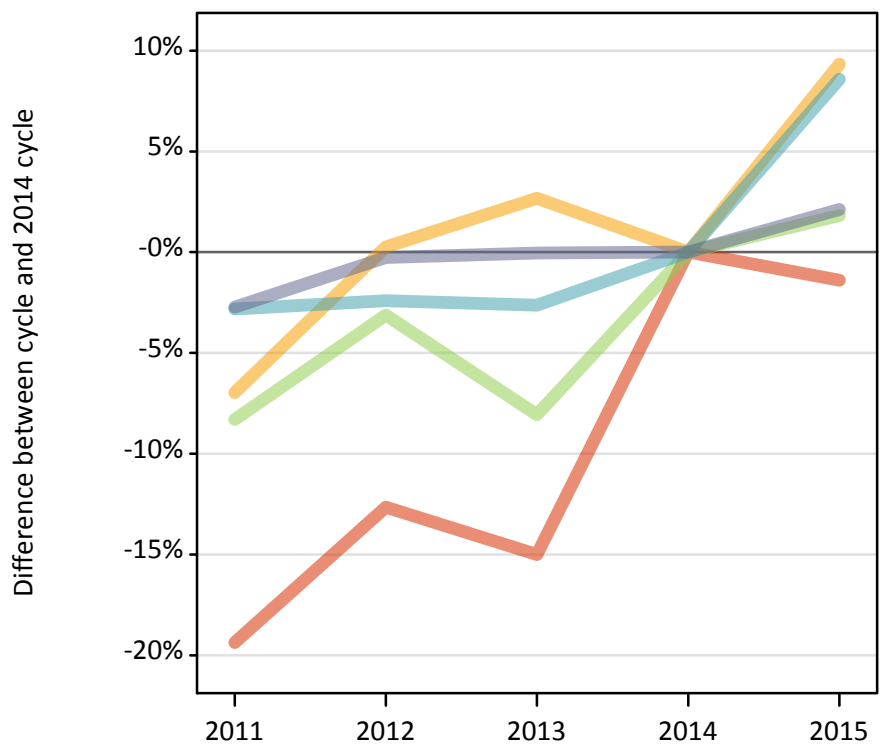
Placed 18 year old applicants: entry rate (indexed to 100 = Quintile 1)

Applicant Status	POLAR3	2011	2012	2013	2014	2015
Placed	Quintile 1	100	100	100	100	100
	Quintile 2	164	145	142	134	143
	Quintile 3	218	219	207	187	187
	Quintile 4	286	269	257	233	236
	Quintile 5	459	424	409	360	353

PX.19 Placed 18 year old applicants from Wales by POLAR3 quintile: 6 days after A level results day

Placed 18 year old applicants: change relative to 2014 cycle totals

- Quintile 1
- Quintile 2
- Quintile 3
- Quintile 4
- Quintile 5



PX.20 Placed 18 year old applicants from Wales by POLAR3 quintile: 6 days after A level results day

Applicant Status	POLAR3	2011	2012	2013	2014	2015
Placed	Quintile 1	1,170	1,260	1,230	1,450	1,430
	Quintile 2	1,780	1,910	1,960	1,910	2,090
	Quintile 3	1,560	1,650	1,560	1,700	1,730
	Quintile 4	2,110	2,120	2,110	2,170	2,350
	Quintile 5	2,530	2,590	2,600	2,600	2,660

PX.21 Placed 18 year old applicants from Wales by POLAR3 quintile: 6 days after A level results day

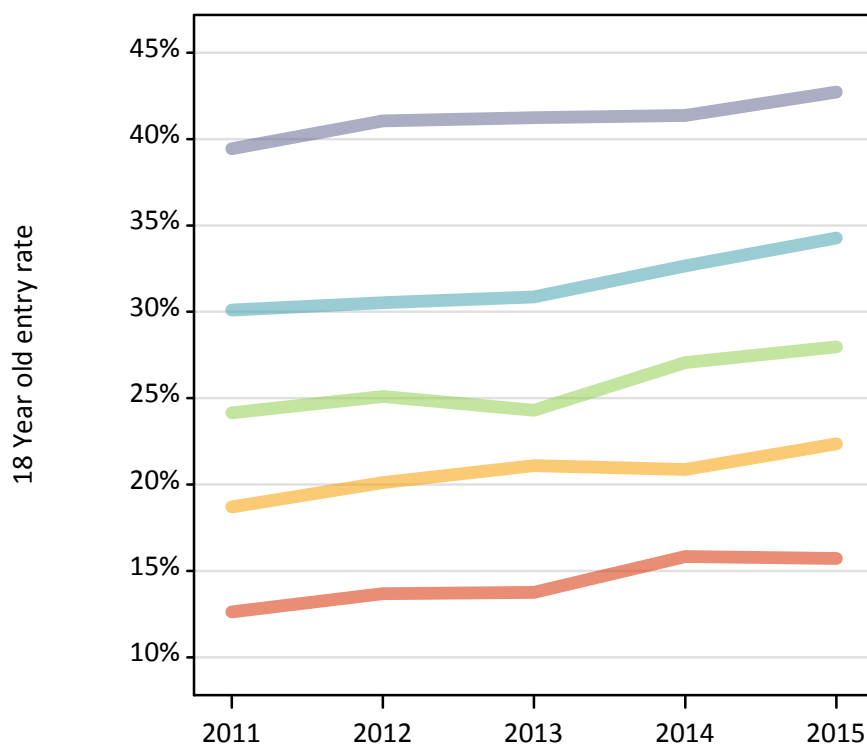
Placed 18 year old applicants: change relative to 2014 cycle totals

Applicant Status	POLAR3	2011	2012	2013	2014	2015
Placed	Quintile 1	-19%	-13%	-15%	0%	-1%
	Quintile 2	-7%	0%	3%	0%	9%
	Quintile 3	-8%	-3%	-8%	0%	2%
	Quintile 4	-3%	-2%	-3%	0%	9%
	Quintile 5	-3%	-0%	-0%	0%	2%

PX.22 Placed 18 year old applicants from Wales by POLAR3 quintile: 6 days after A level results day

Placed 18 year old applicants: entry rate

- Quintile 1
- Quintile 2
- Quintile 3
- Quintile 4
- Quintile 5



PX.23 Placed 18 year old applicants from Wales by POLAR3 quintile: 6 days after A level results day

Placed 18 year old applicants: entry rate

Applicant Status	POLAR3	2011	2012	2013	2014	2015
Placed	Quintile 1	12.6%	13.7%	13.8%	15.8%	15.7%
	Quintile 2	18.7%	20.1%	21.1%	20.9%	22.3%
	Quintile 3	24.1%	25.1%	24.3%	27.1%	28.0%
	Quintile 4	30.1%	30.5%	30.9%	32.6%	34.3%
	Quintile 5	39.4%	41.1%	41.2%	41.4%	42.7%

PX.24 Placed 18 year old applicants from Wales by POLAR3 quintile: 6 days after A level results day

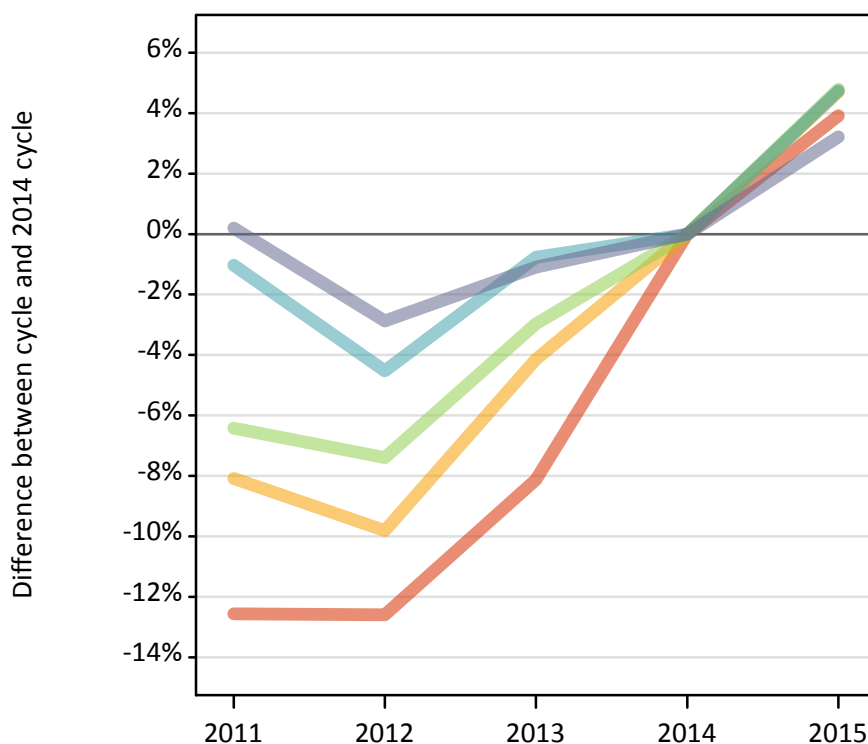
Placed 18 year old applicants: entry rate (indexed to 100 = Quintile 1)

Applicant Status	POLAR3	2011	2012	2013	2014	2015
Placed	Quintile 1	100	100	100	100	100
	Quintile 2	148	147	153	132	142
	Quintile 3	191	183	177	171	178
	Quintile 4	238	223	224	206	218
	Quintile 5	312	300	300	261	272

PX.25 Placed 18 year old applicants from the UK by POLAR3 quintile: 6 days after A level results day

Placed 18 year old applicants: change relative to 2014 cycle totals

- Quintile 1
- Quintile 2
- Quintile 3
- Quintile 4
- Quintile 5



PX.26 Placed 18 year old applicants from the UK by POLAR3 quintile: 6 days after A level results day

Applicant Status	POLAR3	2011	2012	2013	2014	2015
Placed	Quintile 1	20,070	20,060	21,090	22,950	23,850
	Quintile 2	30,260	29,690	31,560	32,920	34,470
	Quintile 3	38,900	38,500	40,340	41,580	43,570
	Quintile 4	50,200	48,430	50,340	50,730	53,130
	Quintile 5	69,870	67,730	68,970	69,730	71,980

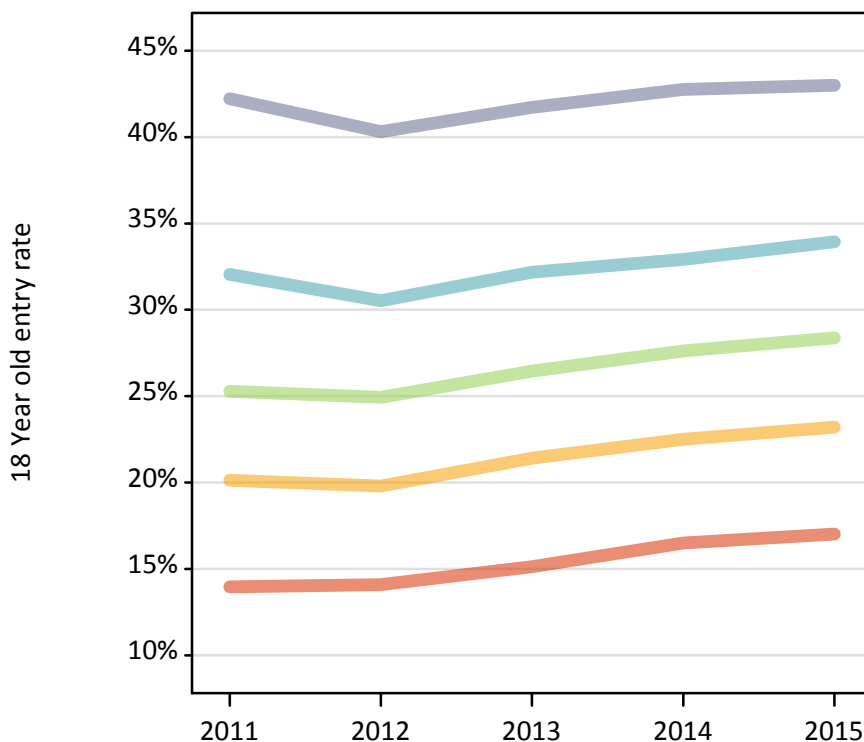
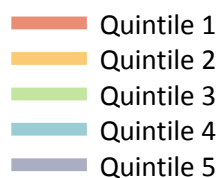
PX.27 Placed 18 year old applicants from the UK by POLAR3 quintile: 6 days after A level results day

Placed 18 year old applicants: change relative to 2014 cycle totals

Applicant Status	POLAR3	2011	2012	2013	2014	2015
Placed	Quintile 1	-13%	-13%	-8%	0%	4%
	Quintile 2	-8%	-10%	-4%	0%	5%
	Quintile 3	-6%	-7%	-3%	0%	5%
	Quintile 4	-1%	-5%	-1%	0%	5%
	Quintile 5	0%	-3%	-1%	0%	3%

PX.28 Placed 18 year old applicants from the UK by POLAR3 quintile: 6 days after A level results day

Placed 18 year old applicants: entry rate



PX.29 Placed 18 year old applicants from the UK by POLAR3 quintile: 6 days after A level results day

Placed 18 year old applicants: entry rate

Applicant Status	POLAR3	2011	2012	2013	2014	2015
Placed	Quintile 1	14.0%	14.1%	15.1%	16.5%	17.0%
	Quintile 2	20.1%	19.8%	21.4%	22.5%	23.2%
	Quintile 3	25.3%	24.9%	26.5%	27.6%	28.4%
	Quintile 4	32.1%	30.5%	32.2%	32.9%	33.9%
	Quintile 5	42.2%	40.3%	41.7%	42.8%	43.0%

PX.30 Placed 18 year old applicants from the UK by POLAR3 quintile: 6 days after A level results day

Placed 18 year old applicants: entry rate (indexed to 100 = Quintile 1)

Applicant Status	POLAR3	2011	2012	2013	2014	2015
Placed	Quintile 1	100	100	100	100	100
	Quintile 2	144	141	142	136	136
	Quintile 3	181	177	175	167	167
	Quintile 4	230	217	213	200	199
	Quintile 5	302	286	276	259	253