

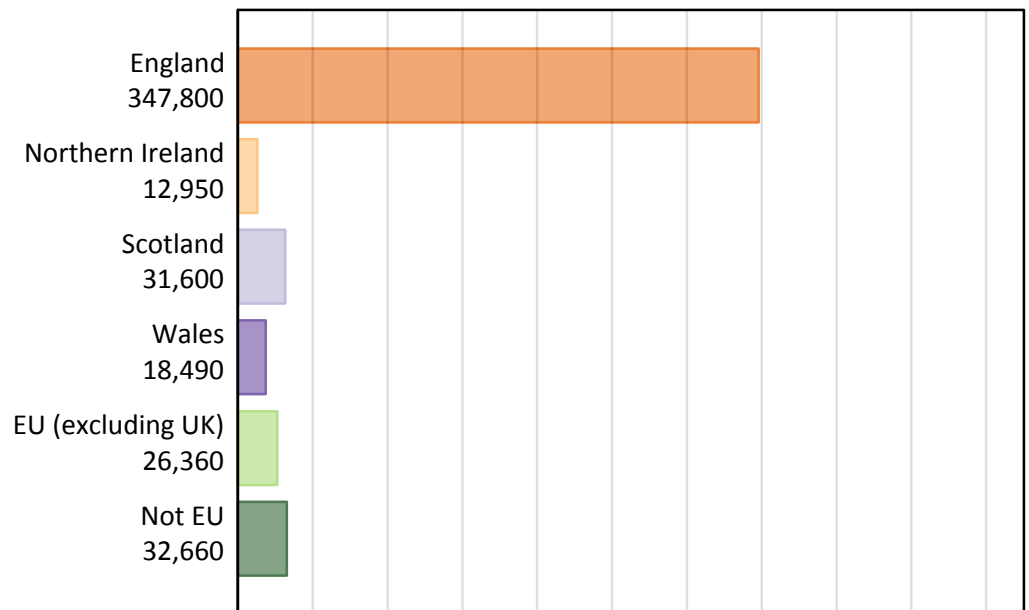
# Daily Clearing Analysis: Country

Analysis at 00:05 on Wednesday 19 August 2015 (6 days after A level results day)

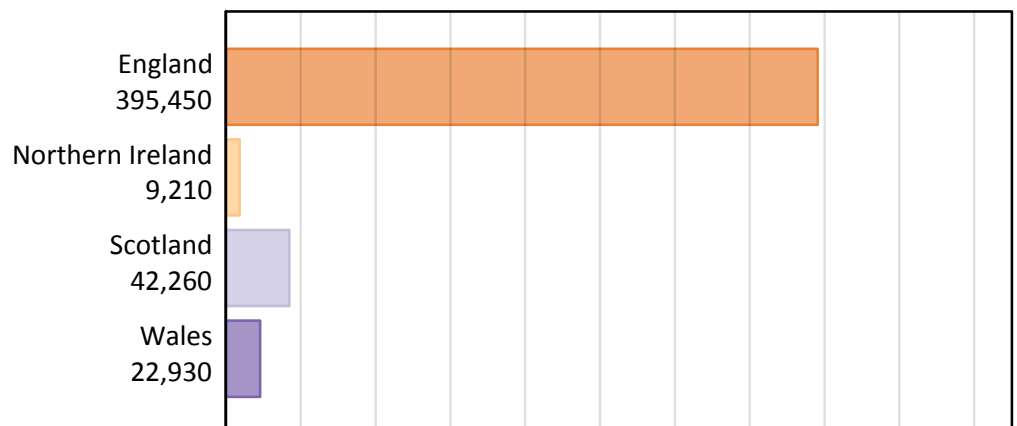
## B.1 Placed applicants by country of provider and domicile, 2015 cycle

Domicile of applicant	Country of provider				
	England	Northern Ireland	Scotland	Wales	UK
England	332,610	550	4,510	10,130	347,800
Northern Ireland	3,690	8,060	1,040	160	12,950
Scotland	1,570	20	29,970	50	31,600
Wales	7,990	10	110	10,370	18,490
EU (excluding UK)	20,740	410	4,050	1,160	26,360
Not EU	28,860	150	2,580	1,070	32,660
All	395,450	9,210	42,260	22,930	469,850

## B.2 Placed applicants by domicile group

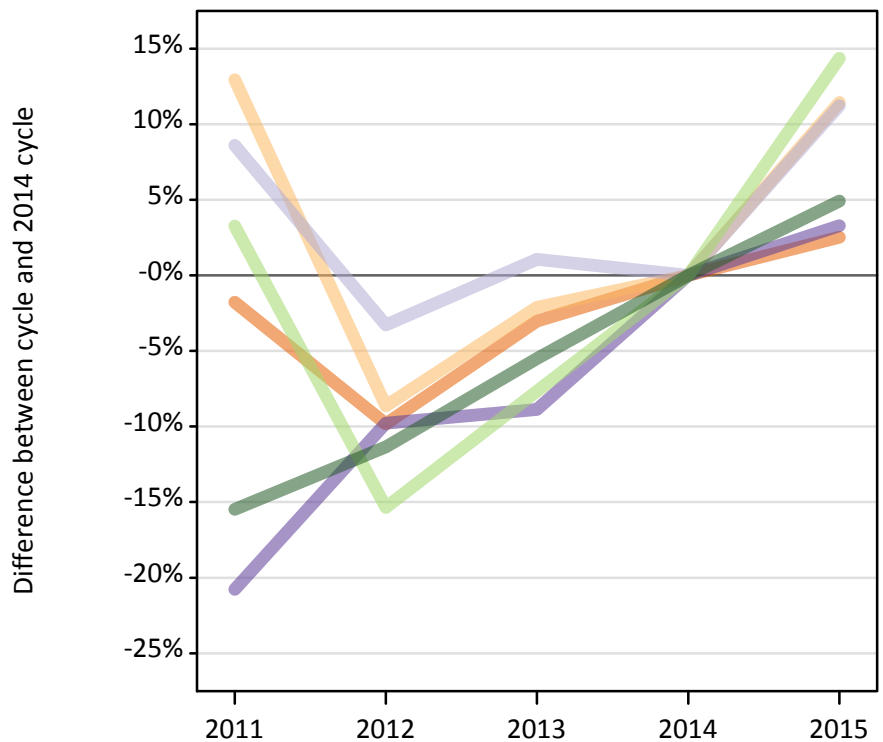
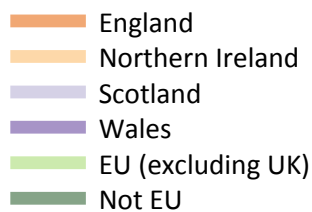


## B.3 Placed applicants by country of provider



#### B.4 Placed applicants at 6 days after A level results day: providers in England

Selected applicant domiciles: difference between cycle and 2014 cycle (at 6 days after A level results day)



#### B.5 Placed applicants at 6 days after A level results day: providers in England

Placed applicants by domicile (at 6 days after A level results day)

Domicile of applicant	2011	2012	2013	2014	2015
England	318,660	292,540	314,640	324,420	332,610
Northern Ireland	3,740	3,030	3,240	3,310	3,690
Scotland	1,530	1,360	1,420	1,410	1,570
Wales	6,130	6,980	7,050	7,740	7,990
EU (excluding UK)	18,730	15,350	16,750	18,140	20,740
Not EU	23,240	24,380	25,990	27,500	28,860

#### B.6 Placed applicants at 6 days after A level results day: providers in England

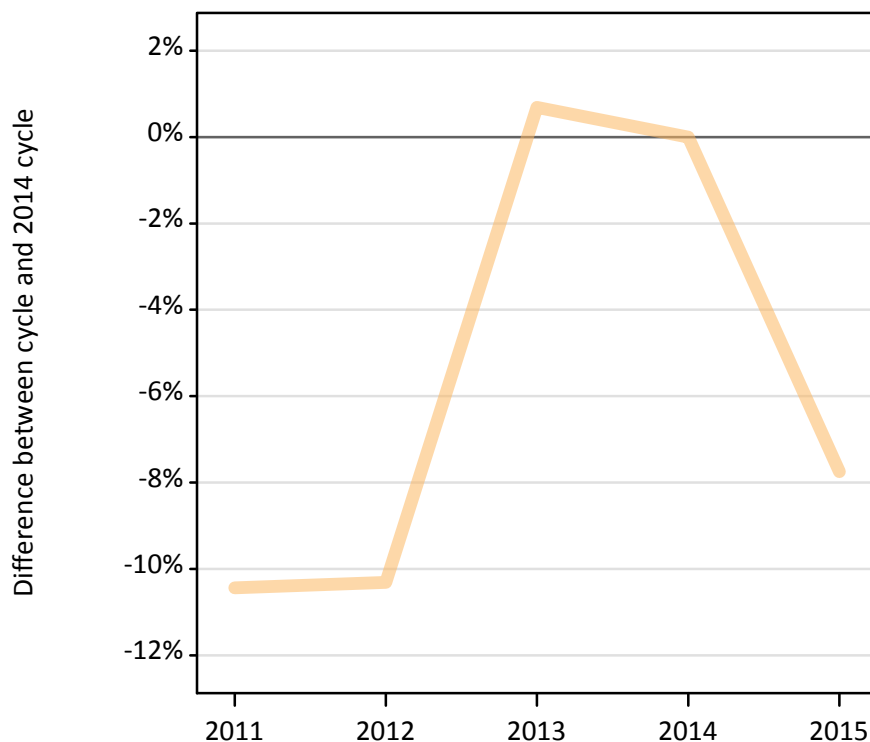
Selected applicant domiciles: difference between cycle and 2014 cycle (at 6 days after A level results day)

Domicile of applicant	2011	2012	2013	2014	2015
England	-2%	-10%	-3%	0%	3%
Northern Ireland	13%	-9%	-2%	0%	11%
Scotland	9%	-3%	1%	0%	11%
Wales	-21%	-10%	-9%	0%	3%
EU (excluding UK)	3%	-15%	-8%	0%	14%
Not EU	-15%	-11%	-6%	0%	5%

### B.7 Placed applicants at 6 days after A level results day: providers in Northern Ireland

Selected applicant domiciles: difference between cycle and 2014 cycle (at 6 days after A level results day)

— Northern Ireland



### B.8 Placed applicants at 6 days after A level results day: providers in Northern Ireland

Placed applicants by domicile (at 6 days after A level results day)

Domicile of applicant	2011	2012	2013	2014	2015
England	230	240	240	350	550
Northern Ireland	7,820	7,840	8,800	8,740	8,060
Scotland	20	30	10	20	20
Wales	10	0	0	10	10
EU (excluding UK)	450	420	450	490	410
Not EU	110	160	170	170	150

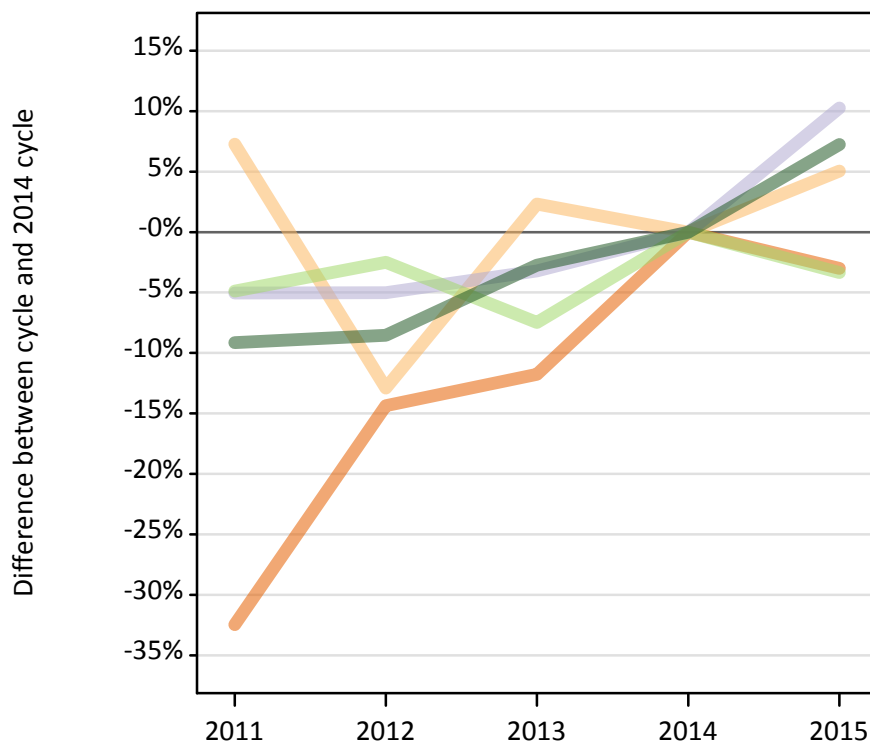
### B.9 Placed applicants at 6 days after A level results day: providers in Northern Ireland

Selected applicant domiciles: difference between cycle and 2014 cycle (at 6 days after A level results day)

Domicile of applicant	2011	2012	2013	2014	2015
Northern Ireland	-10%	-10%	1%	0%	-8%

### B.10 Placed applicants at 6 days after A level results day: providers in Scotland

Selected applicant domiciles: difference between cycle and 2014 cycle (at 6 days after A level results day)



### B.11 Placed applicants at 6 days after A level results day: providers in Scotland

Placed applicants by domicile (at 6 days after A level results day)

Domicile of applicant	2011	2012	2013	2014	2015
England	3,140	3,980	4,100	4,650	4,510
Northern Ireland	1,060	860	1,010	990	1,040
Scotland	25,810	25,810	26,310	27,180	29,970
Wales	90	110	100	100	110
EU (excluding UK)	3,980	4,080	3,870	4,190	4,050
Not EU	2,180	2,200	2,340	2,400	2,580

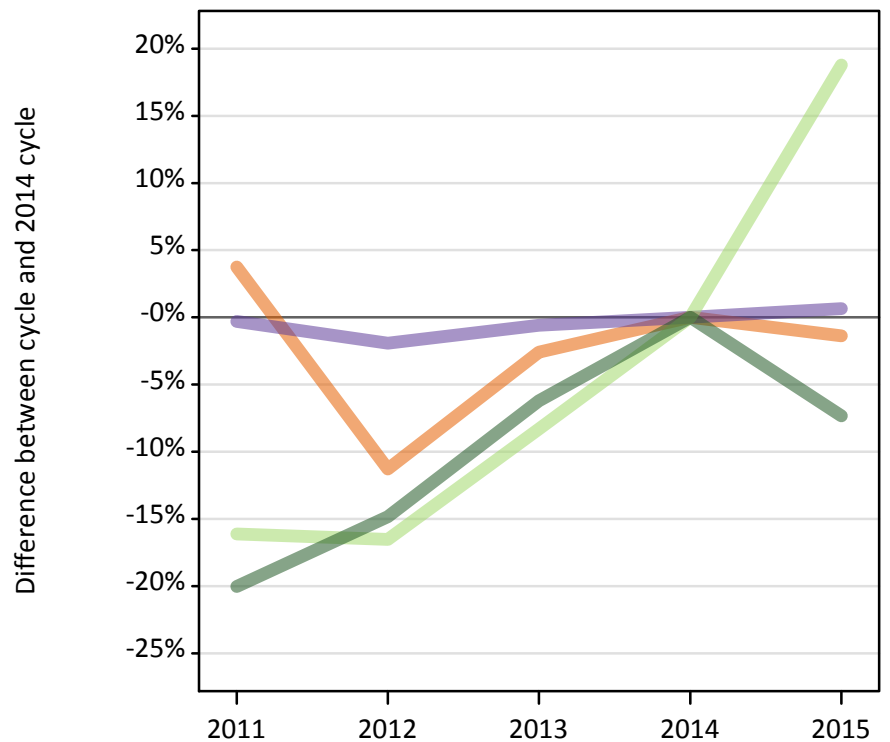
### B.12 Placed applicants at 6 days after A level results day: providers in Scotland

Selected applicant domiciles: difference between cycle and 2014 cycle (at 6 days after A level results day)

Domicile of applicant	2011	2012	2013	2014	2015
England	-32%	-14%	-12%	0%	-3%
Northern Ireland	7%	-13%	2%	0%	5%
Scotland	-5%	-5%	-3%	0%	10%
EU (excluding UK)	-5%	-3%	-7%	0%	-3%
Not EU	-9%	-9%	-3%	0%	7%

### B.13 Placed applicants at 6 days after A level results day: providers in Wales

Selected applicant domiciles: difference between cycle and 2014 cycle (at 6 days after A level results day)



### B.14 Placed applicants at 6 days after A level results day: providers in Wales

Placed applicants by domicile (at 6 days after A level results day)

Domicile of applicant	2011	2012	2013	2014	2015
England	10,650	9,110	10,000	10,270	10,130
Northern Ireland	180	130	160	160	160
Scotland	60	50	60	60	50
Wales	10,270	10,100	10,240	10,300	10,370
EU (excluding UK)	820	810	890	970	1,160
Not EU	930	990	1,090	1,160	1,070

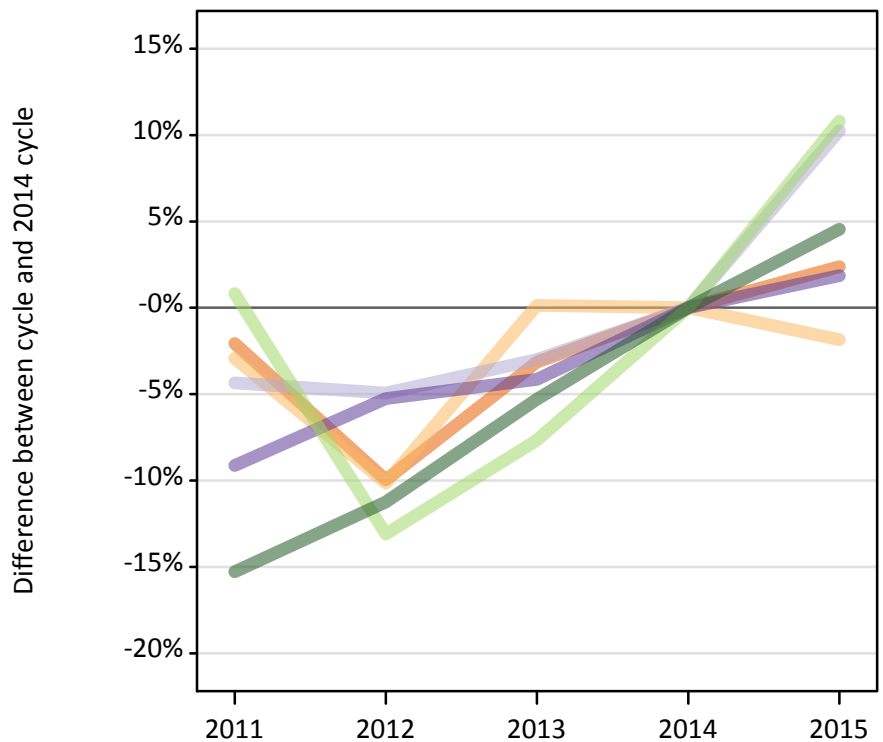
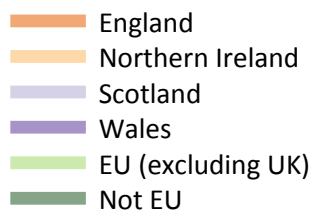
### B.15 Placed applicants at 6 days after A level results day: providers in Wales

Selected applicant domiciles: difference between cycle and 2014 cycle (at 6 days after A level results day)

Domicile of applicant	2011	2012	2013	2014	2015
England	4%	-11%	-3%	0%	-1%
Wales	-0%	-2%	-1%	0%	1%
EU (excluding UK)	-16%	-17%	-8%	0%	19%
Not EU	-20%	-15%	-6%	0%	-7%

### B.16 Placed applicants at 6 days after A level results day: providers in the UK

Selected applicant domiciles: difference between cycle and 2014 cycle (at 6 days after A level results day)



### B.17 Placed applicants at 6 days after A level results day: providers in the UK

Placed applicants by domicile (at 6 days after A level results day)

Domicile of applicant	2011	2012	2013	2014	2015
England	332,680	305,870	328,990	339,690	347,800
Northern Ireland	12,810	11,860	13,210	13,200	12,950
Scotland	27,410	27,250	27,800	28,660	31,600
Wales	16,490	17,200	17,400	18,150	18,490
EU (excluding UK)	23,980	20,670	21,960	23,790	26,360
Not EU	26,460	27,730	29,580	31,240	32,660

### B.18 Placed applicants at 6 days after A level results day: providers in the UK

Selected applicant domiciles: difference between cycle and 2014 cycle (at 6 days after A level results day)

Domicile of applicant	2011	2012	2013	2014	2015
England	-2%	-10%	-3%	0%	2%
Northern Ireland	-3%	-10%	0%	0%	-2%
Scotland	-4%	-5%	-3%	0%	10%
Wales	-9%	-5%	-4%	0%	2%
EU (excluding UK)	1%	-13%	-8%	0%	11%
Not EU	-15%	-11%	-5%	0%	5%