

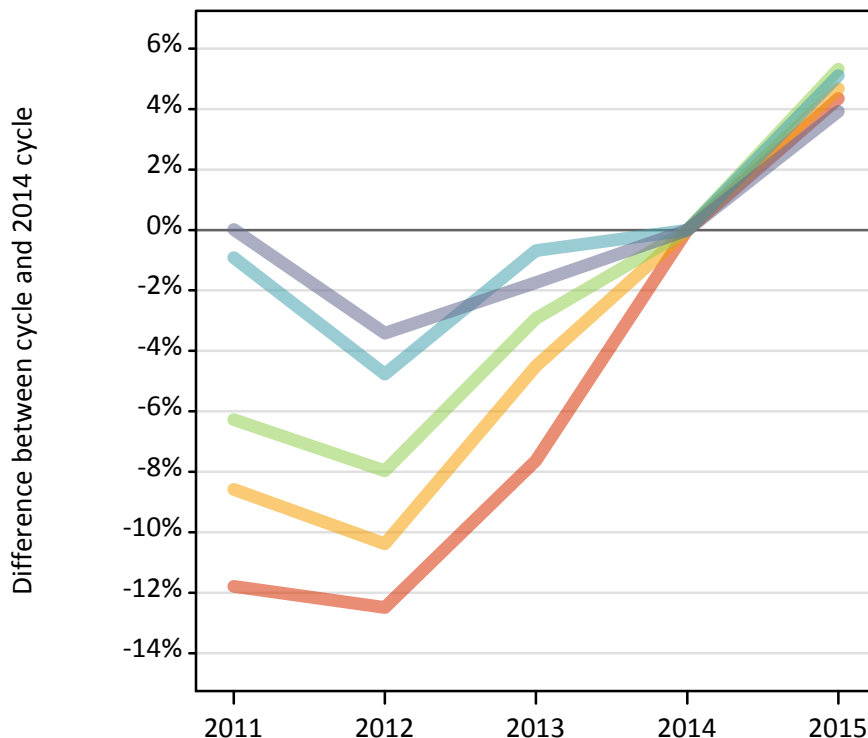
Daily Clearing Analysis: POLAR3

Analysis at 00:05 on Wednesday 19 August 2015 (6 days after A level results day)

P.1 Placed 18 year old applicants from England by POLAR3 quintile: 6 days after A level results day

Placed 18 year old applicants: change relative to 2014 cycle totals

- Quintile 1
- Quintile 2
- Quintile 3
- Quintile 4
- Quintile 5



P.2 Placed 18 year old applicants from England by POLAR3 quintile: 6 days after A level results day

Applicant Status	POLAR3	2011	2012	2013	2014	2015
Placed	Quintile 1	18,050	17,910	18,900	20,460	21,350
	Quintile 2	26,410	25,890	27,590	28,890	30,250
	Quintile 3	34,250	33,630	35,470	36,540	38,490
	Quintile 4	42,490	40,840	42,600	42,890	45,080
	Quintile 5	57,460	55,490	56,450	57,450	59,700

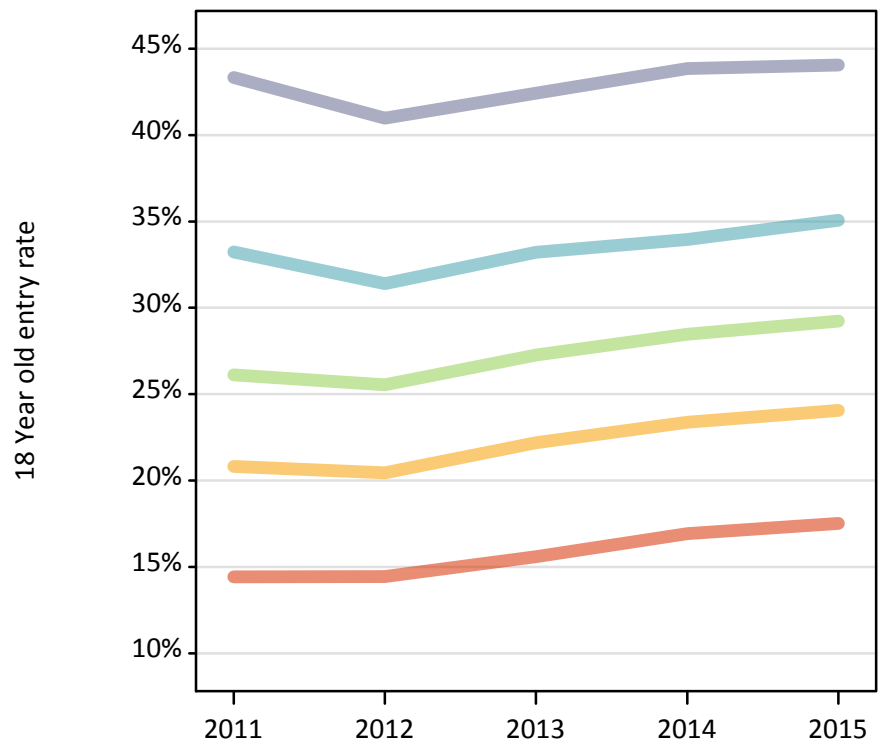
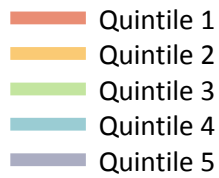
P.3 Placed 18 year old applicants from England by POLAR3 quintile: 6 days after A level results day

Placed 18 year old applicants: change relative to 2014 cycle totals

Applicant Status	POLAR3	2011	2012	2013	2014	2015
Placed	Quintile 1	-12%	-12%	-8%	0%	4%
	Quintile 2	-9%	-10%	-5%	0%	5%
	Quintile 3	-6%	-8%	-3%	0%	5%
	Quintile 4	-1%	-5%	-1%	0%	5%
	Quintile 5	0%	-3%	-2%	0%	4%

P.4 Placed 18 year old applicants from England by POLAR3 quintile: 6 days after A level results day

Placed 18 year old applicants: entry rate



P.5 Placed 18 year old applicants from England by POLAR3 quintile: 6 days after A level results day

Placed 18 year old applicants: entry rate

Applicant Status	POLAR3	2011	2012	2013	2014	2015
Placed	Quintile 1	14.4%	14.4%	15.6%	16.9%	17.5%
	Quintile 2	20.8%	20.4%	22.2%	23.4%	24.1%
	Quintile 3	26.1%	25.5%	27.3%	28.5%	29.2%
	Quintile 4	33.2%	31.4%	33.2%	34.0%	35.1%
	Quintile 5	43.3%	41.0%	42.4%	43.8%	44.1%

P.6 Placed 18 year old applicants from England by POLAR3 quintile: 6 days after A level results day

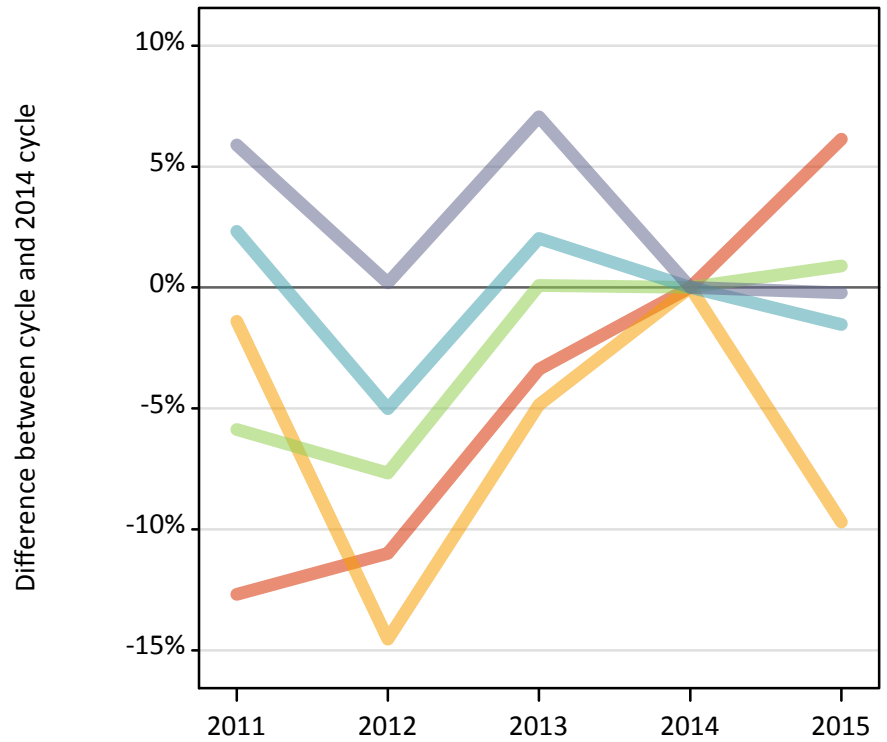
Placed 18 year old applicants: entry rate (indexed to 100 = Quintile 1)

Applicant Status	POLAR3	2011	2012	2013	2014	2015
Placed	Quintile 1	100	100	100	100	100
	Quintile 2	144	142	142	138	137
	Quintile 3	181	177	175	168	167
	Quintile 4	230	217	213	201	200
	Quintile 5	301	284	272	259	252

P.7 Placed 18 year old applicants from Northern Ireland by POLAR3 quintile: 6 days after A level results day

Placed 18 year old applicants: change relative to 2014 cycle totals

- Quintile 1
- Quintile 2
- Quintile 3
- Quintile 4
- Quintile 5



P.8 Placed 18 year old applicants from Northern Ireland by POLAR3 quintile: 6 days after A level results day

Applicant Status	POLAR3	2011	2012	2013	2014	2015
Placed	Quintile 1	410	420	460	470	500
	Quintile 2	770	670	750	780	710
	Quintile 3	1,150	1,130	1,230	1,230	1,240
	Quintile 4	2,470	2,290	2,460	2,410	2,380
	Quintile 5	3,300	3,120	3,340	3,120	3,110

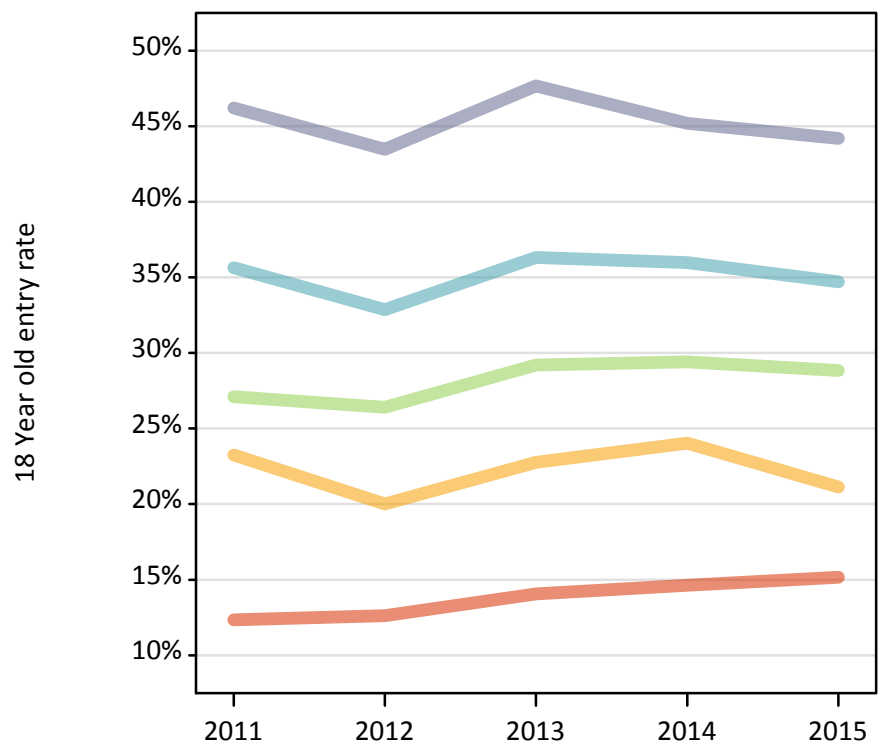
P.9 Placed 18 year old applicants from Northern Ireland by POLAR3 quintile: 6 days after A level results day

Placed 18 year old applicants: change relative to 2014 cycle totals

Applicant Status	POLAR3	2011	2012	2013	2014	2015
Placed	Quintile 1	-13%	-11%	-3%	0%	6%
	Quintile 2	-1%	-15%	-5%	0%	-10%
	Quintile 3	-6%	-8%	0%	0%	1%
	Quintile 4	2%	-5%	2%	0%	-2%
	Quintile 5	6%	0%	7%	0%	-0%

P.10 Placed 18 year old applicants from Northern Ireland by POLAR3 quintile: 6 days after A level results day

Placed 18 year old applicants: entry rate



P.11 Placed 18 year old applicants from Northern Ireland by POLAR3 quintile: 6 days after A level results day

Placed 18 year old applicants: entry rate

Applicant Status	POLAR3	2011	2012	2013	2014	2015
Placed	Quintile 1	12.3%	12.6%	14.1%	14.6%	15.1%
	Quintile 2	23.3%	20.0%	22.8%	24.0%	21.1%
	Quintile 3	27.1%	26.4%	29.2%	29.4%	28.8%
	Quintile 4	35.6%	32.9%	36.3%	36.0%	34.7%
	Quintile 5	46.2%	43.5%	47.7%	45.2%	44.2%

P.12 Placed 18 year old applicants from Northern Ireland by POLAR3 quintile: 6 days after A level results day

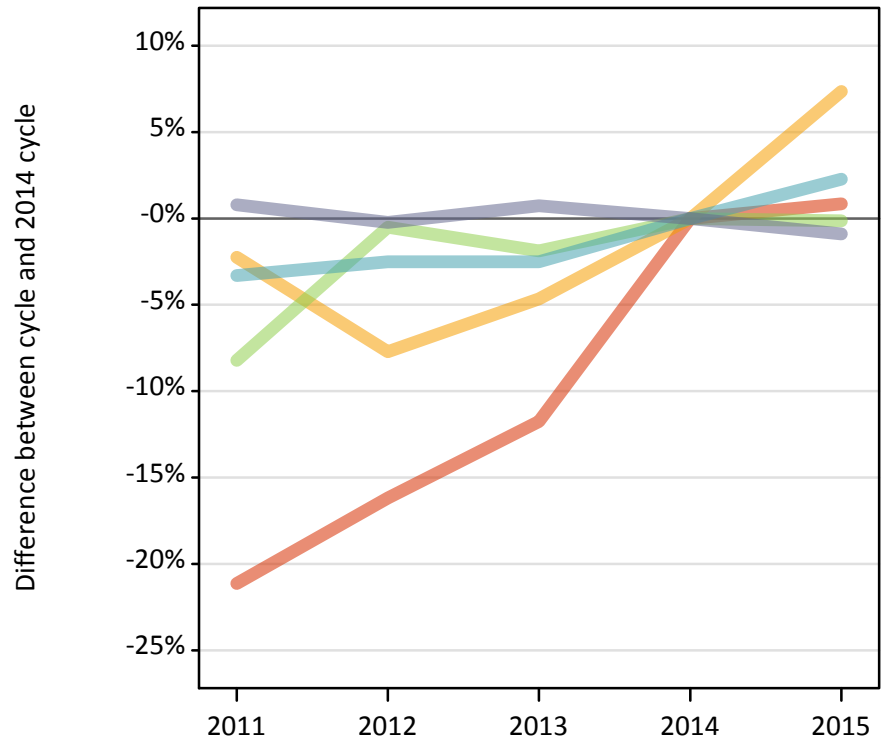
Placed 18 year old applicants: entry rate (indexed to 100 = Quintile 1)

Applicant Status	POLAR3	2011	2012	2013	2014	2015
Placed	Quintile 1	100	100	100	100	100
	Quintile 2	188	159	162	164	139
	Quintile 3	220	209	208	201	190
	Quintile 4	289	261	258	246	229
	Quintile 5	374	345	339	309	292

P.13 Placed 18 year old applicants from Scotland by POLAR3 quintile: 6 days after A level results day

Placed 18 year old applicants: change relative to 2014 cycle totals

- Quintile 1
- Quintile 2
- Quintile 3
- Quintile 4
- Quintile 5



P.14 Placed 18 year old applicants from Scotland by POLAR3 quintile: 6 days after A level results day

Applicant Status	POLAR3	2011	2012	2013	2014	2015
Placed	Quintile 1	460	490	520	590	590
	Quintile 2	1,340	1,270	1,310	1,380	1,480
	Quintile 3	2,000	2,170	2,140	2,180	2,180
	Quintile 4	3,250	3,270	3,270	3,360	3,430
	Quintile 5	6,780	6,710	6,770	6,720	6,660

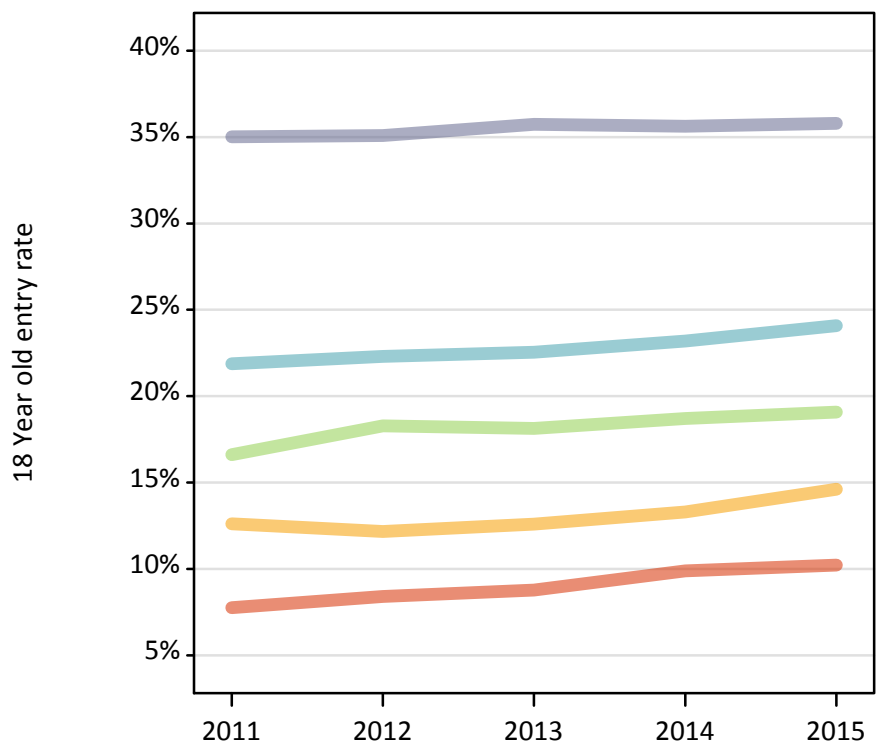
P.15 Placed 18 year old applicants from Scotland by POLAR3 quintile: 6 days after A level results day

Placed 18 year old applicants: change relative to 2014 cycle totals

Applicant Status	POLAR3	2011	2012	2013	2014	2015
Placed	Quintile 1	-21%	-16%	-12%	0%	1%
	Quintile 2	-2%	-8%	-5%	0%	7%
	Quintile 3	-8%	-1%	-2%	0%	-0%
	Quintile 4	-3%	-3%	-3%	0%	2%
	Quintile 5	1%	-0%	1%	0%	-1%

P.16 Placed 18 year old applicants from Scotland by POLAR3 quintile: 6 days after A level results day

Placed 18 year old applicants: entry rate



P.17 Placed 18 year old applicants from Scotland by POLAR3 quintile: 6 days after A level results day

Placed 18 year old applicants: entry rate

Applicant Status	POLAR3	2011	2012	2013	2014	2015
Placed	Quintile 1	7.8%	8.4%	8.8%	9.9%	10.2%
	Quintile 2	12.6%	12.2%	12.6%	13.3%	14.6%
	Quintile 3	16.6%	18.3%	18.1%	18.7%	19.1%
	Quintile 4	21.9%	22.3%	22.5%	23.2%	24.1%
	Quintile 5	35.0%	35.1%	35.7%	35.6%	35.8%

P.18 Placed 18 year old applicants from Scotland by POLAR3 quintile: 6 days after A level results day

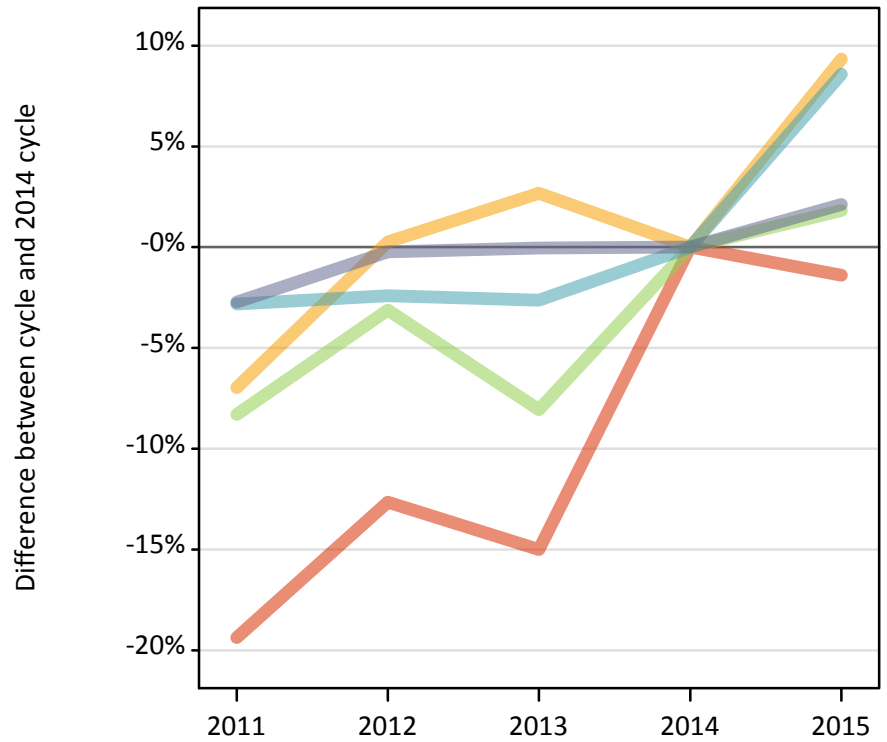
Placed 18 year old applicants: entry rate (indexed to 100 = Quintile 1)

Applicant Status	POLAR3	2011	2012	2013	2014	2015
Placed	Quintile 1	100	100	100	100	100
	Quintile 2	162	145	143	134	143
	Quintile 3	214	218	207	189	186
	Quintile 4	282	265	257	234	235
	Quintile 5	452	418	407	360	350

P.19 Placed 18 year old applicants from Wales by POLAR3 quintile: 6 days after A level results day

Placed 18 year old applicants: change relative to 2014 cycle totals

- Quintile 1
- Quintile 2
- Quintile 3
- Quintile 4
- Quintile 5



P.20 Placed 18 year old applicants from Wales by POLAR3 quintile: 6 days after A level results day

Applicant Status	POLAR3	2011	2012	2013	2014	2015
Placed	Quintile 1	1,170	1,260	1,230	1,450	1,430
	Quintile 2	1,780	1,910	1,960	1,910	2,090
	Quintile 3	1,560	1,650	1,560	1,700	1,730
	Quintile 4	2,110	2,120	2,110	2,170	2,350
	Quintile 5	2,530	2,600	2,600	2,600	2,660

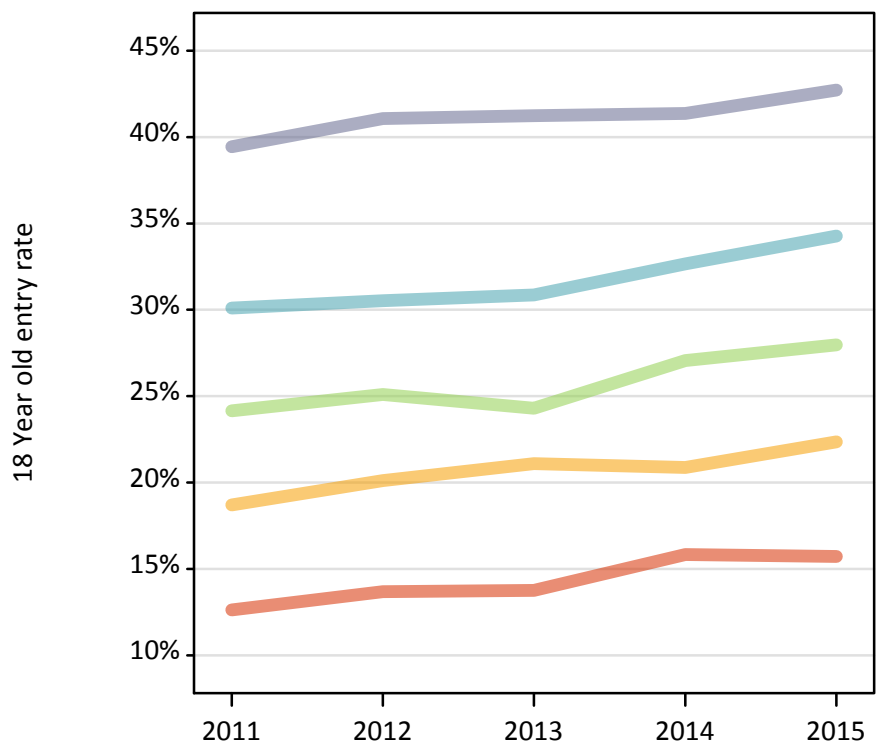
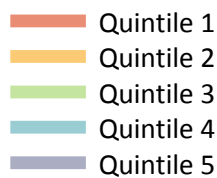
P.21 Placed 18 year old applicants from Wales by POLAR3 quintile: 6 days after A level results day

Placed 18 year old applicants: change relative to 2014 cycle totals

Applicant Status	POLAR3	2011	2012	2013	2014	2015
Placed	Quintile 1	-19%	-13%	-15%	0%	-1%
	Quintile 2	-7%	0%	3%	0%	9%
	Quintile 3	-8%	-3%	-8%	0%	2%
	Quintile 4	-3%	-2%	-3%	0%	9%
	Quintile 5	-3%	-0%	-0%	0%	2%

P.22 Placed 18 year old applicants from Wales by POLAR3 quintile: 6 days after A level results day

Placed 18 year old applicants: entry rate



P.23 Placed 18 year old applicants from Wales by POLAR3 quintile: 6 days after A level results day

Placed 18 year old applicants: entry rate

Applicant Status	POLAR3	2011	2012	2013	2014	2015
Placed	Quintile 1	12.6%	13.7%	13.8%	15.8%	15.7%
	Quintile 2	18.7%	20.1%	21.1%	20.9%	22.3%
	Quintile 3	24.1%	25.1%	24.3%	27.1%	28.0%
	Quintile 4	30.1%	30.5%	30.9%	32.6%	34.3%
	Quintile 5	39.4%	41.1%	41.2%	41.4%	42.7%

P.24 Placed 18 year old applicants from Wales by POLAR3 quintile: 6 days after A level results day

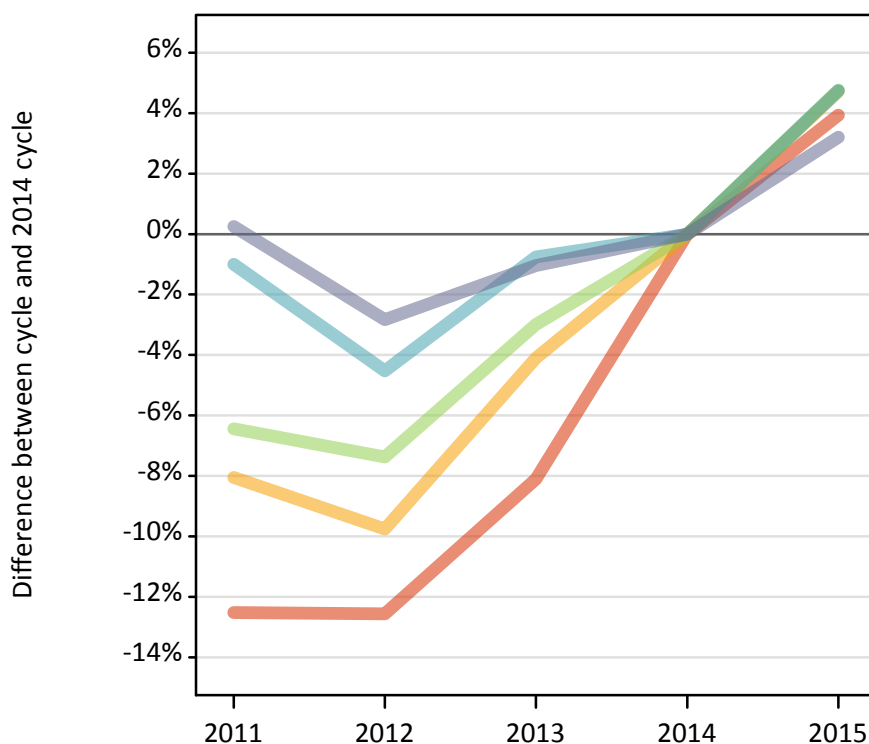
Placed 18 year old applicants: entry rate (indexed to 100 = Quintile 1)

Applicant Status	POLAR3	2011	2012	2013	2014	2015
Placed	Quintile 1	100	100	100	100	100
	Quintile 2	148	147	153	132	142
	Quintile 3	191	183	177	171	178
	Quintile 4	238	223	224	206	218
	Quintile 5	312	300	300	261	272

P.25 Placed 18 year old applicants from the UK by POLAR3 quintile: 6 days after A level results day

Placed 18 year old applicants: change relative to 2014 cycle totals

- Quintile 1
- Quintile 2
- Quintile 3
- Quintile 4
- Quintile 5



P.26 Placed 18 year old applicants from the UK by POLAR3 quintile: 6 days after A level results day

Applicant Status	POLAR3	2011	2012	2013	2014	2015
Placed	Quintile 1	20,090	20,080	21,110	22,970	23,870
	Quintile 2	30,310	29,750	31,610	32,960	34,520
	Quintile 3	38,970	38,580	40,400	41,650	43,630
	Quintile 4	50,320	48,520	50,440	50,830	53,240
	Quintile 5	70,070	67,910	69,160	69,890	72,130

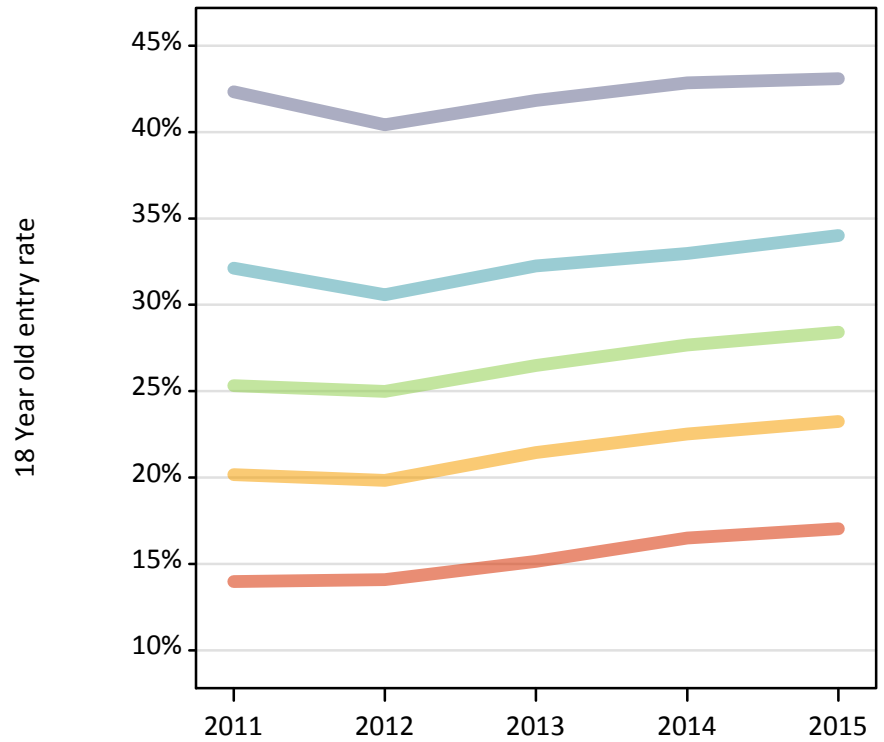
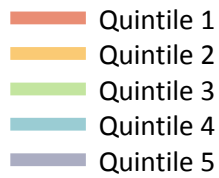
P.27 Placed 18 year old applicants from the UK by POLAR3 quintile: 6 days after A level results day

Placed 18 year old applicants: change relative to 2014 cycle totals

Applicant Status	POLAR3	2011	2012	2013	2014	2015
Placed	Quintile 1	-13%	-13%	-8%	0%	4%
	Quintile 2	-8%	-10%	-4%	0%	5%
	Quintile 3	-6%	-7%	-3%	0%	5%
	Quintile 4	-1%	-5%	-1%	0%	5%
	Quintile 5	0%	-3%	-1%	0%	3%

P.28 Placed 18 year old applicants from the UK by POLAR3 quintile: 6 days after A level results day

Placed 18 year old applicants: entry rate



P.29 Placed 18 year old applicants from the UK by POLAR3 quintile: 6 days after A level results day

Placed 18 year old applicants: entry rate

Applicant Status	POLAR3	2011	2012	2013	2014	2015
Placed	Quintile 1	14.0%	14.1%	15.1%	16.5%	17.0%
	Quintile 2	20.2%	19.8%	21.5%	22.5%	23.2%
	Quintile 3	25.3%	25.0%	26.5%	27.7%	28.4%
	Quintile 4	32.1%	30.6%	32.3%	33.0%	34.0%
	Quintile 5	42.3%	40.4%	41.8%	42.9%	43.1%

P.30 Placed 18 year old applicants from the UK by POLAR3 quintile: 6 days after A level results day

Placed 18 year old applicants: entry rate (indexed to 100 = Quintile 1)

Applicant Status	POLAR3	2011	2012	2013	2014	2015
Placed	Quintile 1	100	100	100	100	100
	Quintile 2	144	141	142	136	136
	Quintile 3	181	177	175	168	167
	Quintile 4	230	217	213	200	200
	Quintile 5	303	287	276	260	253