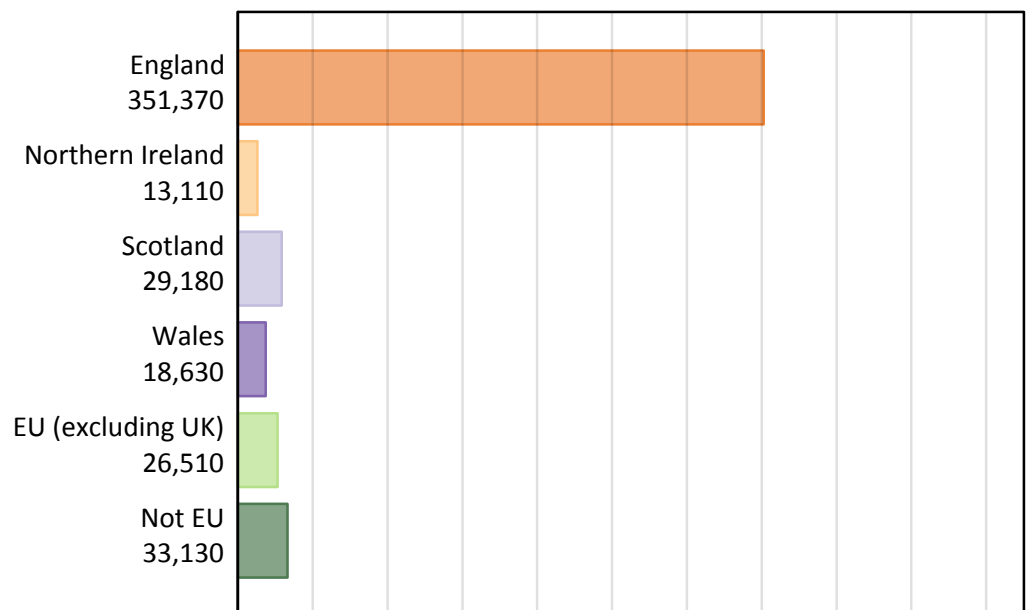


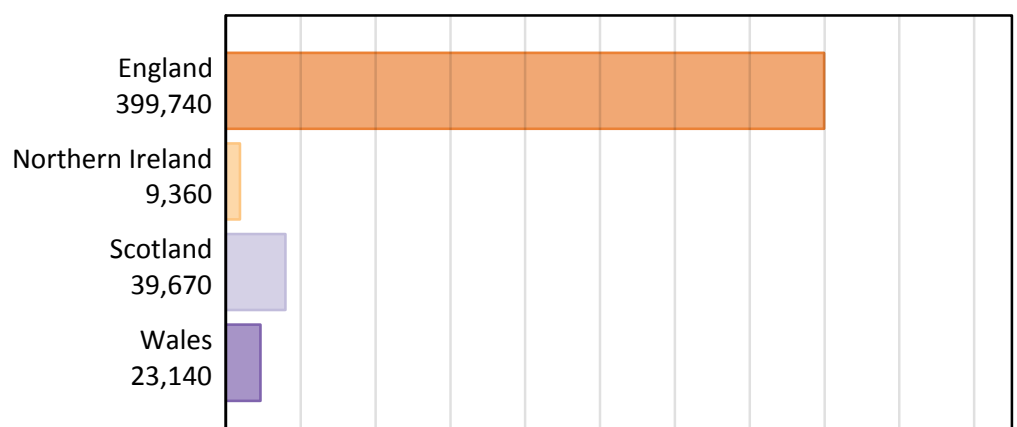
Analysis at 00:05 on Thursday 20 August 2015 (7 days after A level results day - No Scot.X1)
BX.1 Placed applicants by country of provider and domicile, 2015 cycle

Domicile of applicant	Country of provider				
	England	Northern Ireland	Scotland	Wales	UK
England	336,120	560	4,500	10,190	351,370
Northern Ireland	3,740	8,210	1,000	160	13,110
Scotland	1,580	20	27,530	50	29,180
Wales	8,030	10	120	10,470	18,630
EU (excluding UK)	21,000	410	3,940	1,170	26,510
Not EU	29,280	160	2,590	1,100	33,130
All	399,740	9,360	39,670	23,140	471,920

BX.2 Placed applicants by domicile group

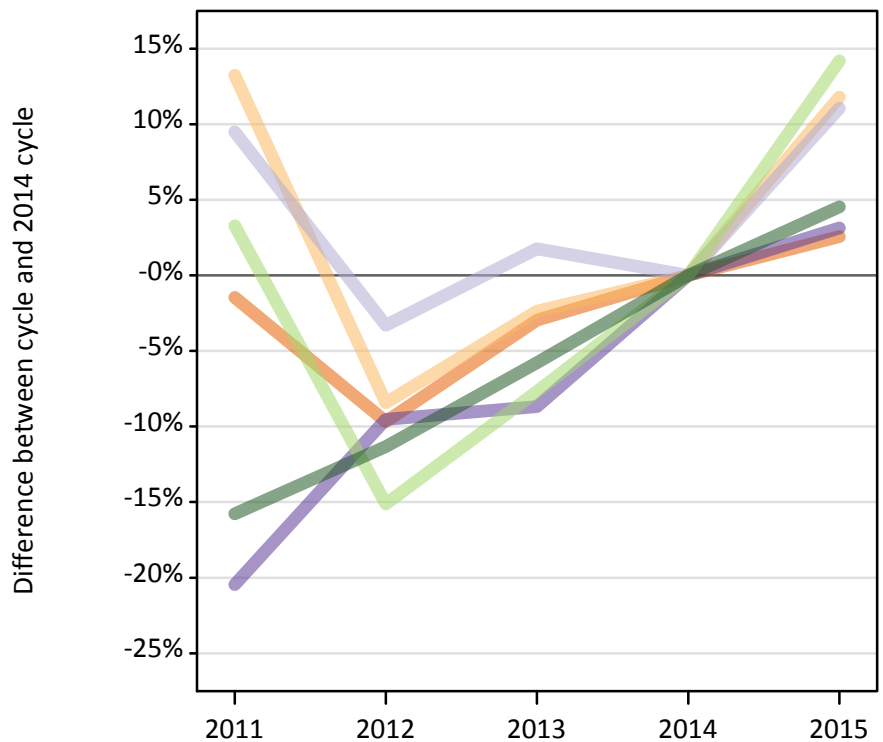


BX.3 Placed applicants by country of provider



BX.4 Placed applicants at 7 days after A level results day: providers in England

Selected applicant domiciles: difference between cycle and 2014 cycle (at 7 days after A level results day)



BX.5 Placed applicants at 7 days after A level results day: providers in England

Placed applicants by domicile (at 7 days after A level results day)

Domicile of applicant	2011	2012	2013	2014	2015
England	322,930	296,020	318,010	327,740	336,120
Northern Ireland	3,790	3,060	3,270	3,350	3,740
Scotland	1,560	1,370	1,450	1,420	1,580
Wales	6,190	7,050	7,110	7,790	8,030
EU (excluding UK)	18,990	15,610	16,980	18,390	21,000
Not EU	23,590	24,840	26,390	28,010	29,280

BX.6 Placed applicants at 7 days after A level results day: providers in England

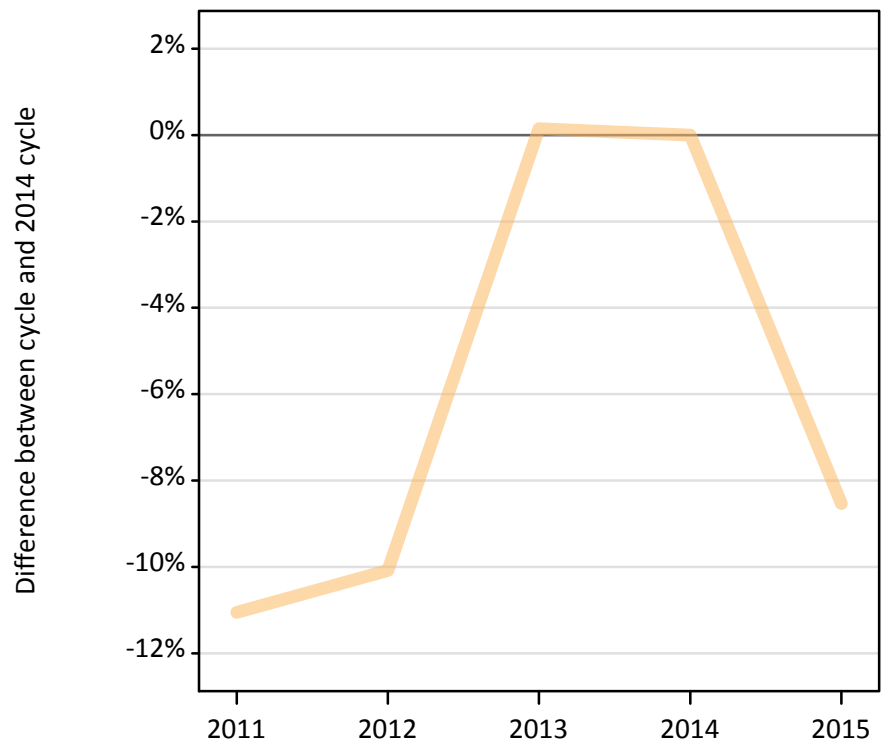
Selected applicant domiciles: difference between cycle and 2014 cycle (at 7 days after A level results day)

Domicile of applicant	2011	2012	2013	2014	2015
England	-1%	-10%	-3%	0%	3%
Northern Ireland	13%	-8%	-2%	0%	12%
Scotland	10%	-3%	2%	0%	11%
Wales	-20%	-10%	-9%	0%	3%
EU (excluding UK)	3%	-15%	-8%	0%	14%
Not EU	-16%	-11%	-6%	0%	5%

BX.7 Placed applicants at 7 days after A level results day: providers in Northern Ireland

Selected applicant domiciles: difference between cycle and 2014 cycle (at 7 days after A level results day)

— Northern Ireland



BX.8 Placed applicants at 7 days after A level results day: providers in Northern Ireland

Placed applicants by domicile (at 7 days after A level results day)

Domicile of applicant	2011	2012	2013	2014	2015
England	230	240	240	350	560
Northern Ireland	7,980	8,070	8,990	8,970	8,210
Scotland	20	30	10	20	20
Wales	10	0	0	10	10
EU (excluding UK)	450	430	440	500	410
Not EU	110	160	170	180	160

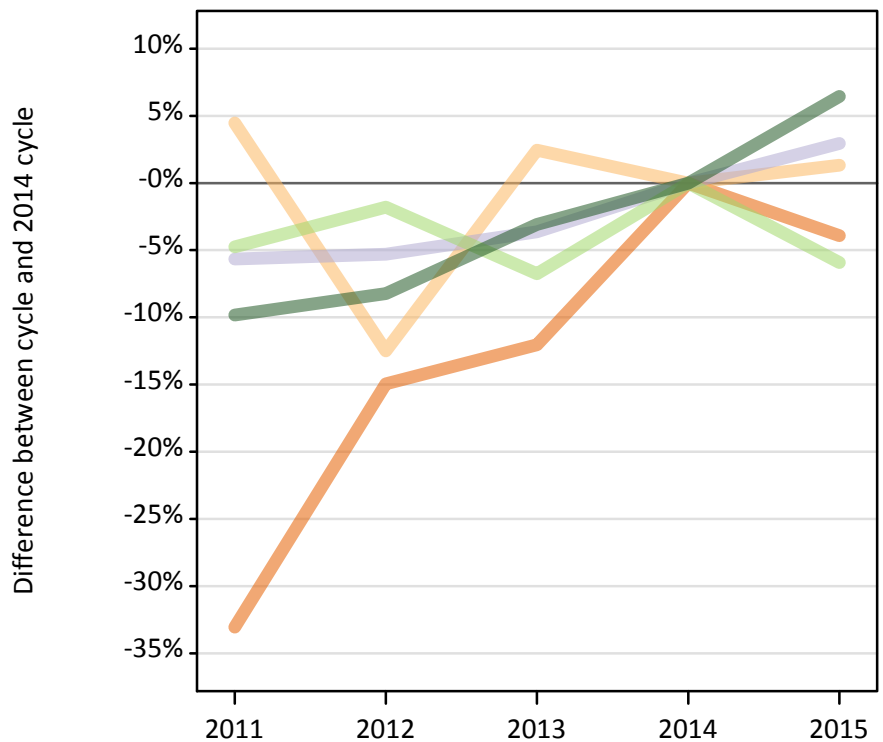
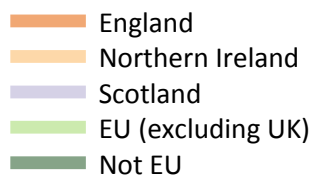
BX.9 Placed applicants at 7 days after A level results day: providers in Northern Ireland

Selected applicant domiciles: difference between cycle and 2014 cycle (at 7 days after A level results day)

Domicile of applicant	2011	2012	2013	2014	2015
Northern Ireland	-11%	-10%	0%	0%	-9%

BX.10 Placed applicants at 7 days after A level results day: providers in Scotland

Selected applicant domiciles: difference between cycle and 2014 cycle (at 7 days after A level results day)



BX.11 Placed applicants at 7 days after A level results day: providers in Scotland

Placed applicants by domicile (at 7 days after A level results day)

Domicile of applicant	2011	2012	2013	2014	2015
England	3,140	3,990	4,120	4,690	4,500
Northern Ireland	1,030	860	1,010	980	1,000
Scotland	25,230	25,330	25,770	26,750	27,530
Wales	90	110	100	110	120
EU (excluding UK)	3,990	4,110	3,900	4,180	3,940
Not EU	2,190	2,230	2,360	2,430	2,590

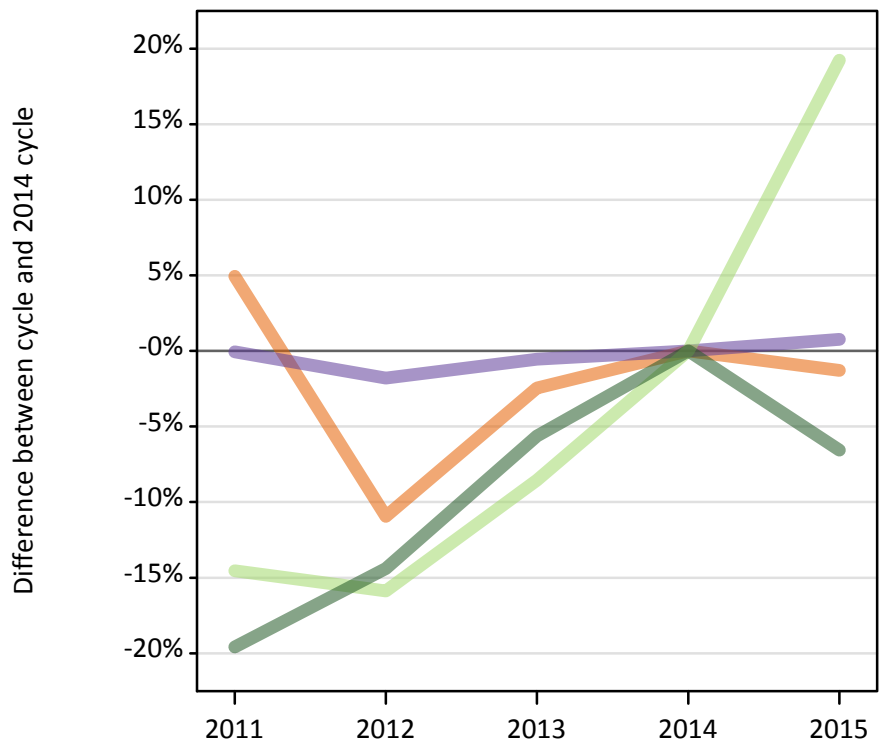
BX.12 Placed applicants at 7 days after A level results day: providers in Scotland

Selected applicant domiciles: difference between cycle and 2014 cycle (at 7 days after A level results day)

Domicile of applicant	2011	2012	2013	2014	2015
England	-33%	-15%	-12%	0%	-4%
Northern Ireland	4%	-13%	2%	0%	1%
Scotland	-6%	-5%	-4%	0%	3%
EU (excluding UK)	-5%	-2%	-7%	0%	-6%
Not EU	-10%	-8%	-3%	0%	6%

BX.13 Placed applicants at 7 days after A level results day: providers in Wales

Selected applicant domiciles: difference between cycle and 2014 cycle (at 7 days after A level results day)



BX.14 Placed applicants at 7 days after A level results day: providers in Wales

Placed applicants by domicile (at 7 days after A level results day)

Domicile of applicant	2011	2012	2013	2014	2015
England	10,840	9,200	10,070	10,330	10,190
Northern Ireland	190	140	160	160	160
Scotland	60	50	60	60	50
Wales	10,390	10,210	10,340	10,390	10,470
EU (excluding UK)	840	830	900	980	1,170
Not EU	940	1,010	1,110	1,170	1,100

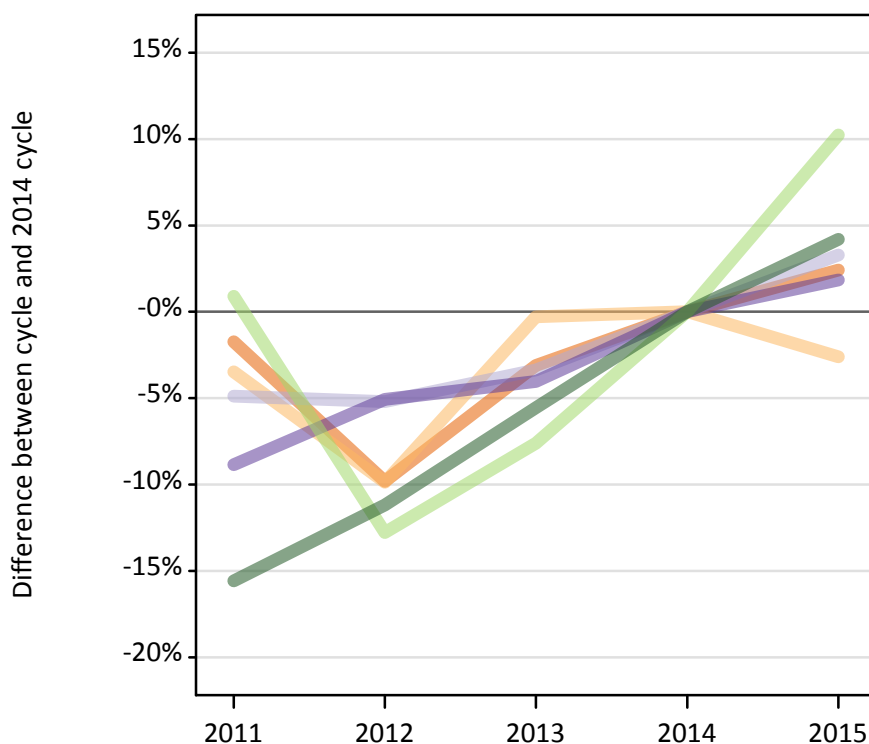
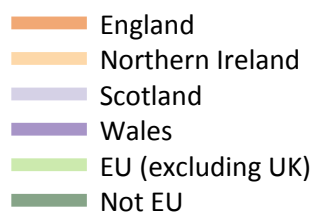
BX.15 Placed applicants at 7 days after A level results day: providers in Wales

Selected applicant domiciles: difference between cycle and 2014 cycle (at 7 days after A level results day)

Domicile of applicant	2011	2012	2013	2014	2015
England	5%	-11%	-2%	0%	-1%
Wales	-0%	-2%	-1%	0%	1%
EU (excluding UK)	-15%	-16%	-9%	0%	19%
Not EU	-20%	-14%	-6%	0%	-7%

BX.16 Placed applicants at 7 days after A level results day: providers in the UK

Selected applicant domiciles: difference between cycle and 2014 cycle (at 7 days after A level results day)



BX.17 Placed applicants at 7 days after A level results day: providers in the UK

Placed applicants by domicile (at 7 days after A level results day)

Domicile of applicant	2011	2012	2013	2014	2015
England	337,130	309,450	332,450	343,100	351,370
Northern Ireland	12,990	12,130	13,420	13,460	13,110
Scotland	26,870	26,780	27,300	28,250	29,180
Wales	16,670	17,360	17,550	18,290	18,630
EU (excluding UK)	24,270	20,980	22,220	24,050	26,510
Not EU	26,850	28,240	30,030	31,800	33,130

BX.18 Placed applicants at 7 days after A level results day: providers in the UK

Selected applicant domiciles: difference between cycle and 2014 cycle (at 7 days after A level results day)

Domicile of applicant	2011	2012	2013	2014	2015
England	-2%	-10%	-3%	0%	2%
Northern Ireland	-3%	-10%	-0%	0%	-3%
Scotland	-5%	-5%	-3%	0%	3%
Wales	-9%	-5%	-4%	0%	2%
EU (excluding UK)	1%	-13%	-8%	0%	10%
Not EU	-16%	-11%	-6%	0%	4%