

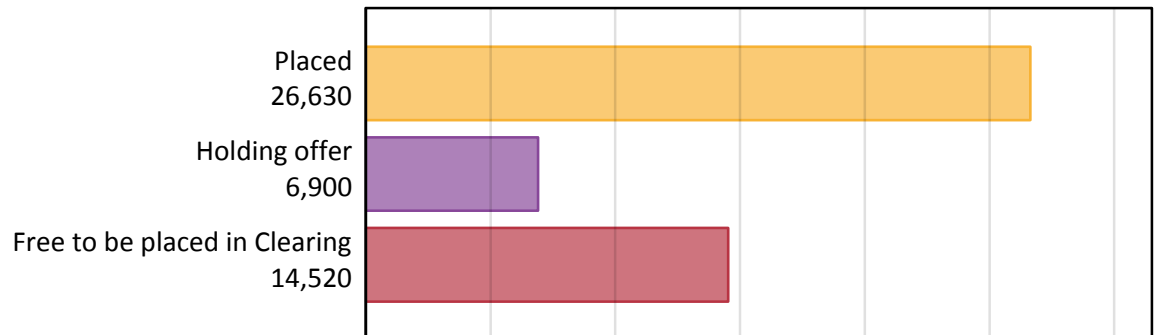
# Daily Clearing Analysis: Overview

Analysis at 00:05 on Thursday 20 August 2015 (7 days after A level results day)

## A.1 Applicants by type and status from the EU - excluding UK, 2015 cycle

Applicant type	Status	2015
Main scheme	Placed (Clearing)	1,010
	Placed (Adjustment)	40
	Placed (Firm)	22,380
	Placed (Insurance)	1,960
	Placed (Other)	1,000
	Holding offer	6,900
	Free to be placed in Clearing	14,520
Direct to Clearing	Placed (Direct to Clearing)	260
	Other (Direct to Clearing)	370
All applicants	Placed	26,630

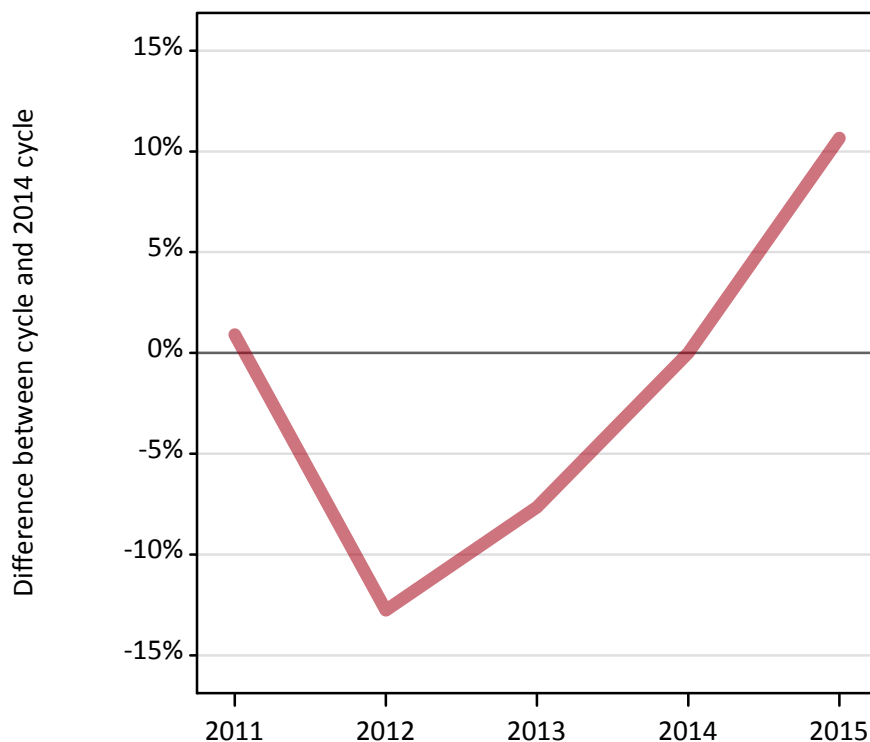
## A.2 Summary of applicants who are placed, holding offers or free to be placed in Clearing ( the EU - excluding UK )



### A.3 All placed applicants from the EU - excluding UK: 7 days after A level results day

All placed applicants: difference between cycle and 2014 cycle

Placed



### A.4 All placed applicants from the EU - excluding UK: 7 days after A level results day

All placed applicants: applicants at 7 days after A level results day

Applicant type	Status	2011	2012	2013	2014	2015
All applicants	Placed	24,290	20,990	22,230	24,070	26,630

### A.5 All placed applicants from the EU - excluding UK: 7 days after A level results day

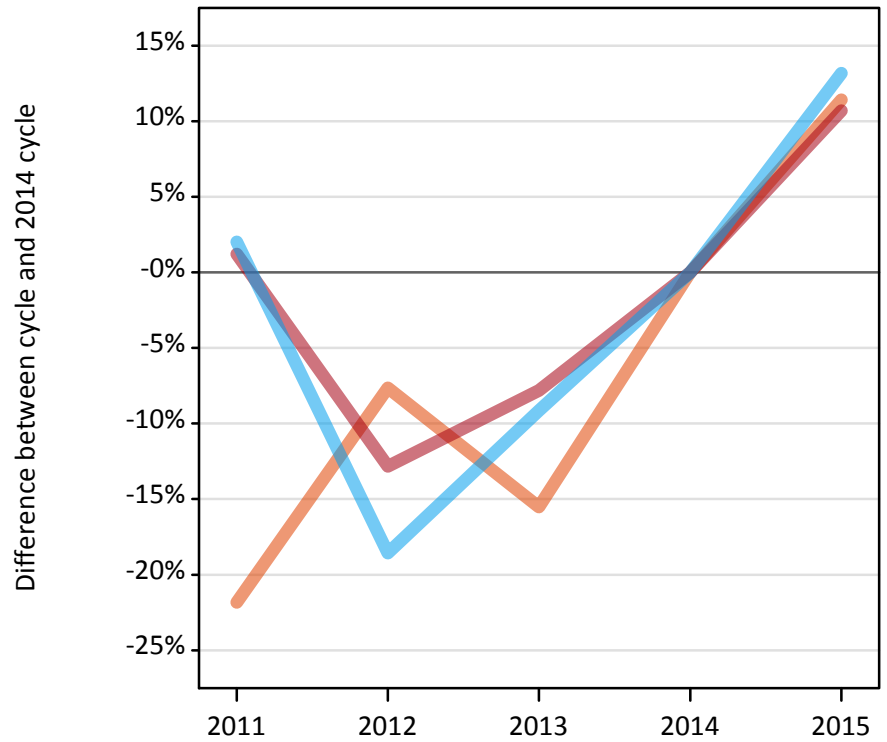
All placed applicants: difference between cycle and 2014 cycle

Applicant type	Status	2011	2012	2013	2014	2015
All applicants	Placed	1%	-13%	-8%	0%	11%

### A.6 Placed main scheme applicants from the EU - excluding UK: 7 days after A level results day

Selected placed routes: difference between cycle and 2014 cycle

- Placed (Clearing)
- Placed (Firm)
- Placed (Insurance)



### A.7 Placed main scheme applicants from the EU - excluding UK: 7 days after A level results day

All Main scheme placed routes (excluding Adjustment): applicants at 7 days after A level results day

Applicant type	Status	2011	2012	2013	2014	2015
Main scheme	Placed (Clearing)	710	830	760	900	1,010
	Placed (Firm)	20,460	17,620	18,640	20,220	22,380
	Placed (Insurance)	1,760	1,410	1,570	1,730	1,960
	Placed (Other)	1,200	890	990	980	1,000

### A.8 Placed main scheme applicants from the EU - excluding UK: 7 days after A level results day

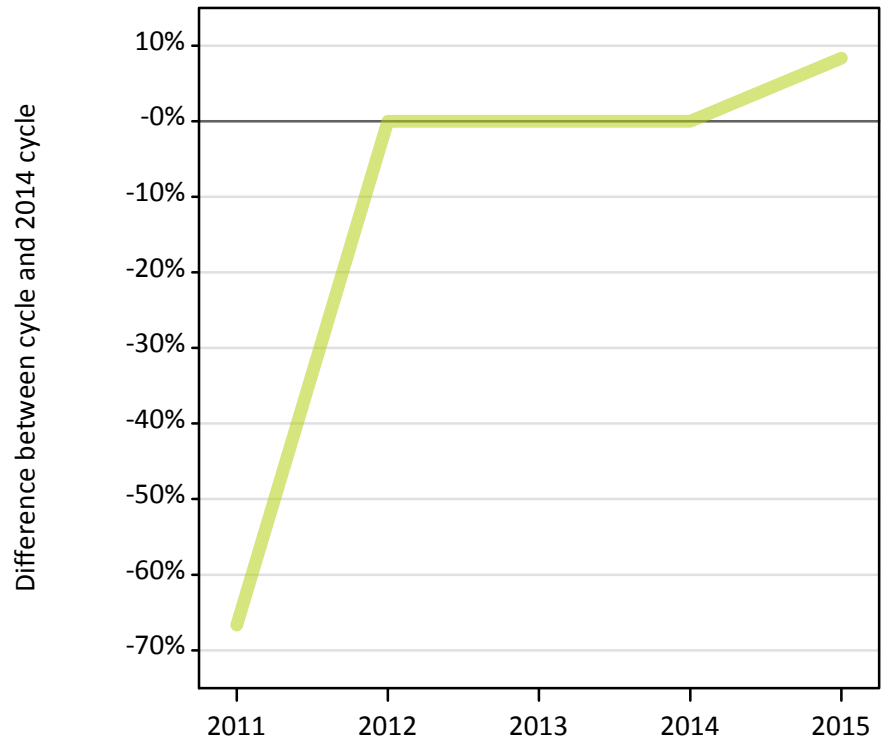
Selected placed routes: difference between cycle and 2014 cycle

Applicant type	Status	2011	2012	2013	2014	2015
Main scheme	Placed (Clearing)	-22%	-8%	-16%	0%	11%
	Placed (Firm)	1%	-13%	-8%	0%	11%
	Placed (Insurance)	2%	-19%	-9%	0%	13%

### A.9 Main scheme applicants placed through adjustment: 7 days after A level results day

Placed through adjustment: difference between cycle and 2014 cycle

Placed (Adjustment)



### A.10 Main scheme applicants placed through adjustment: 7 days after A level results day

Placed through adjustment: applicants at 7 days after A level results day

Applicant type	Status	2011	2012	2013	2014	2015
Main scheme	Placed (Adjustment)	10	40	40	40	40

### A.11 Main scheme applicants placed through adjustment: 7 days after A level results day

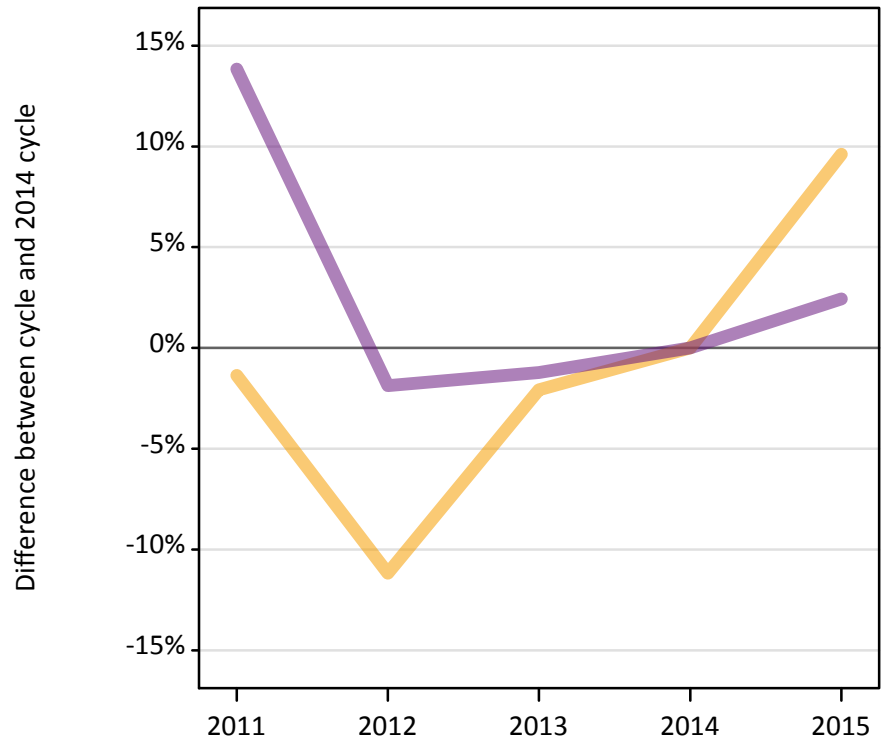
Placed through adjustment: difference between cycle and 2014 cycle

Applicant type	Status	2011	2012	2013	2014	2015
Main scheme	Placed (Adjustment)	-67%	0%	0%	0%	8%

### A.12 Main scheme applicants not currently placed from the EU - excluding UK: 7 days after A level results day

Applicants in unplaced states: difference between cycle and 2014 cycle

— Holding offer  
— Free to be placed in Clearing



### A.13 Main scheme applicants not currently placed from the EU - excluding UK: 7 days after A level results day

Applicants in unplaced states: applicants at 7 days after A level results day

Applicant type	Status	2011	2012	2013	2014	2015
Main scheme	Holding offer	6,210	5,590	6,170	6,300	6,900
	Free to be placed in Clearing	16,140	13,910	14,010	14,180	14,520

### A.14 Main scheme applicants not currently placed from the EU - excluding UK: 7 days after A level results day

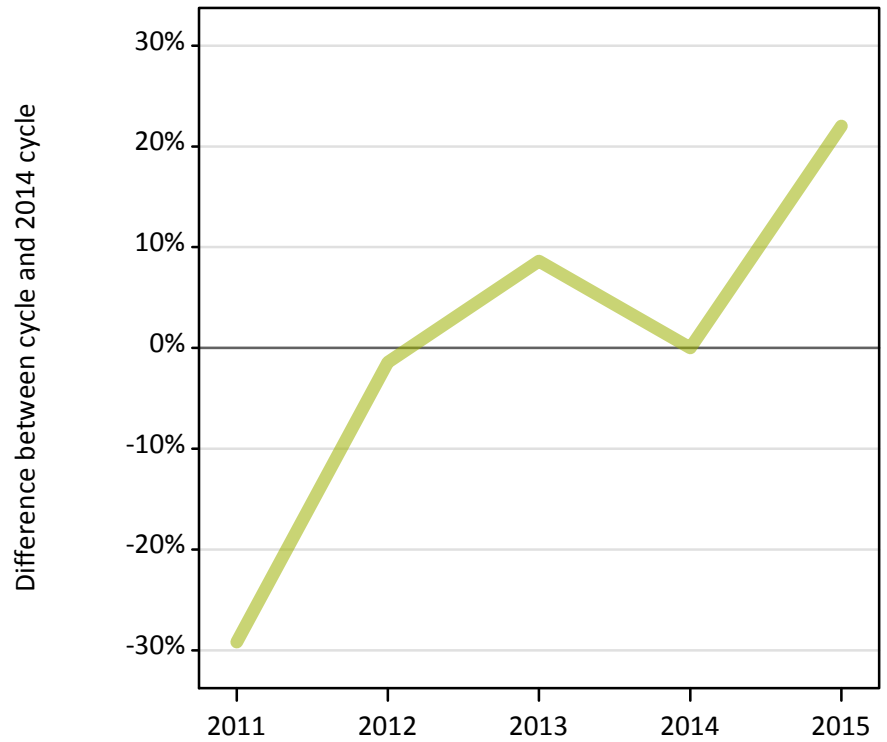
Applicants in unplaced states: difference between cycle and 2014 cycle

Applicant type	Status	2011	2012	2013	2014	2015
Main scheme	Holding offer	-1%	-11%	-2%	0%	10%
	Free to be placed in Clearing	14%	-2%	-1%	0%	2%

**A.15 Direct to Clearing applicants from the EU - excluding UK: 7 days after A level results day**

Placed (Direct to Clearing): difference between cycle and 2014 cycle

Placed (Direct to Clearing)



**A.16 Direct to Clearing applicants from the EU - excluding UK: 7 days after A level results day**

Direct to Clearing 7 days after A level results day

Applicant type	Status	2011	2012	2013	2014	2015
Direct to Clearing	Placed (Direct to Clearing)	150	210	230	210	260
	Other (Direct to Clearing)	520	370	370	360	370

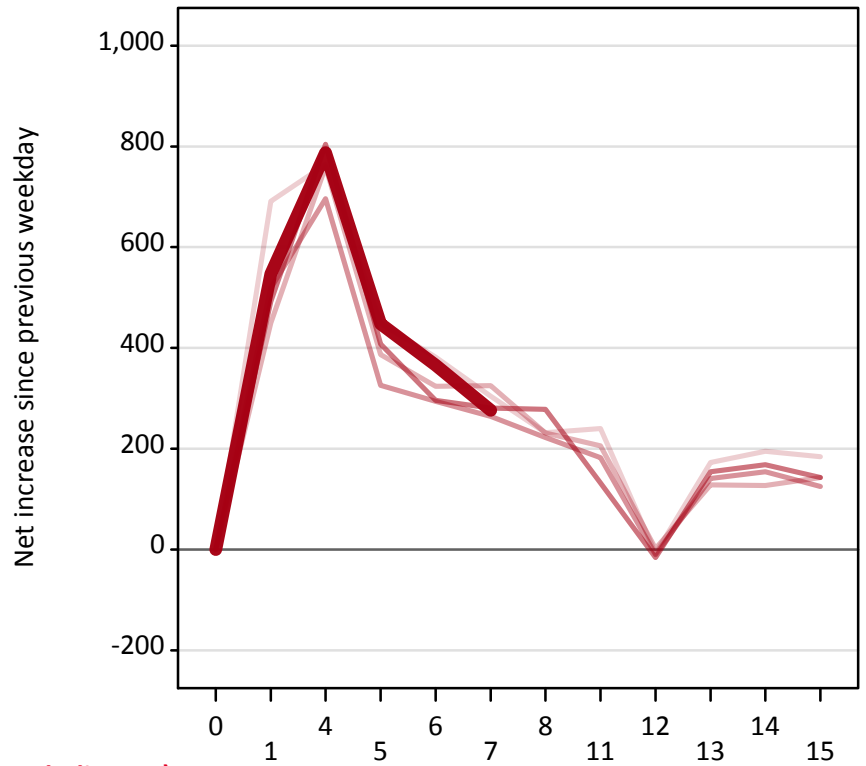
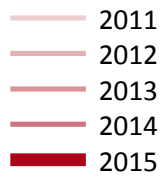
**A.17 Direct to Clearing applicants from the EU - excluding UK: 7 days after A level results day**

Placed (Direct to Clearing): difference between cycle and 2014 cycle

Applicant type	Status	2011	2012	2013	2014	2015
Direct to Clearing	Placed (Direct to Clearing)	-29%	-1%	9%	0%	22%

### A.18 All Placed: Daily net change (from the EU - excluding UK)

Net increase since previous weekday (2015 cycle up to 7 days after A level results day)



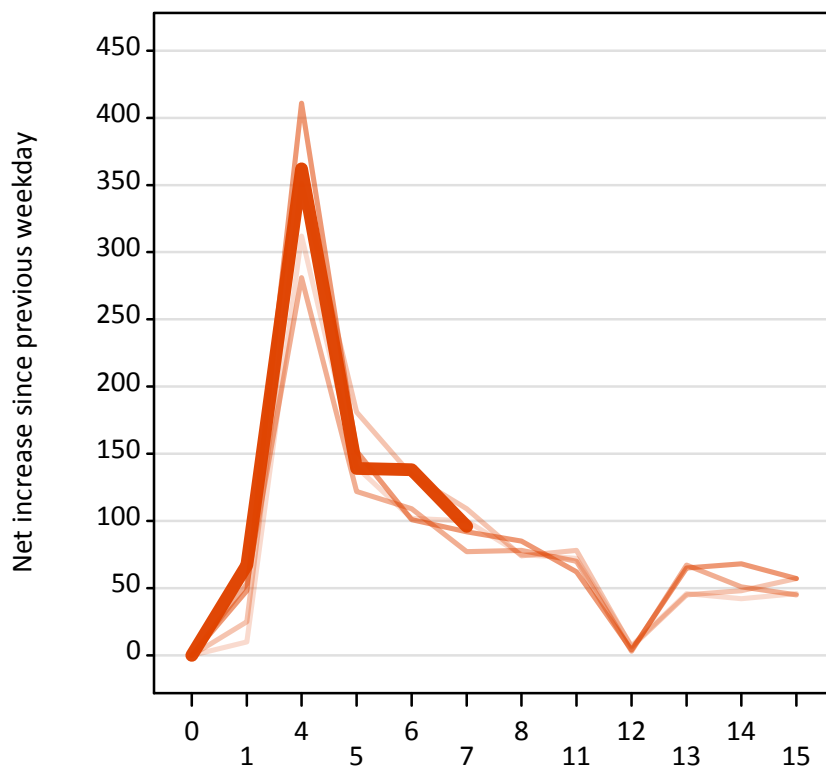
### A.19 All Placed: Daily net change (from the EU - excluding UK)

Net increase since previous weekday (2015 cycle up to 7 days after A level results day)

Applicant status, days since A level results day		2011	2012	2013	2014	2015
All Placed	0	0	0	0	0	0
	1	690	450	520	490	550
	4	760	760	700	800	790
	5	450	390	330	410	450
	6	380	320	290	300	370
	7	300	330	260	280	280
	8	230	230	220	280	
	11	240	210	180	130	
	12	-10	0	-10	-20	
	13	170	130	140	150	
	14	200	130	150	170	
	15	180	140	130	140	

### A.20 Placed through Clearing only: Daily net change (from the EU - excluding UK)

Net increase since previous weekday (2015 cycle up to 7 days after A level results day)



### A.21 Placed through Clearing only: Daily net change (from the EU - excluding UK)

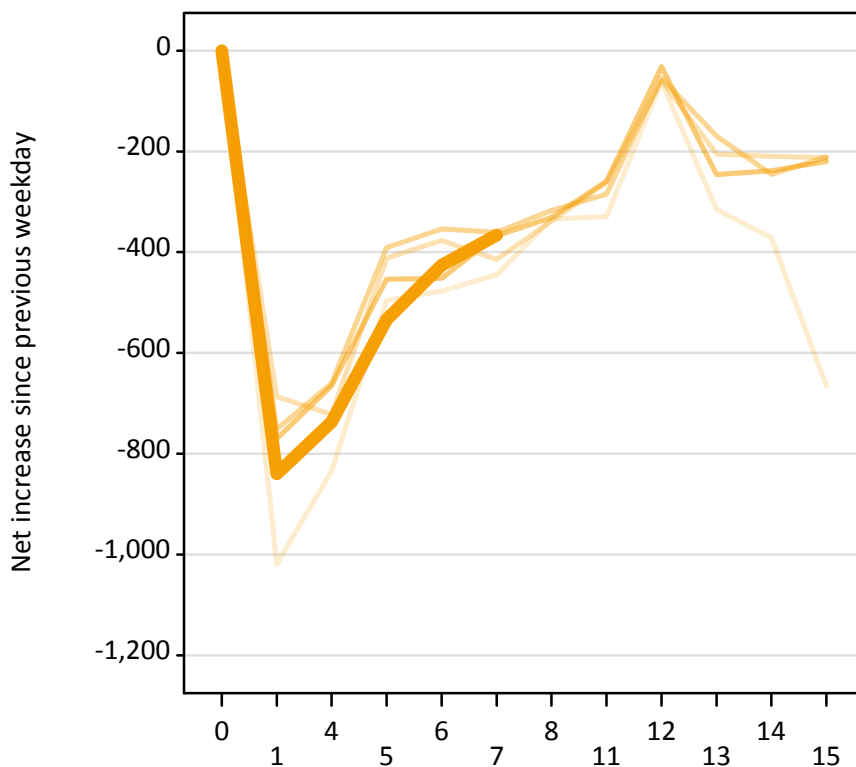
Net increase since previous weekday (2015 cycle up to 7 days after A level results day)

Applicant status, days since A level results day		2011	2012	2013	2014	2015
Placed through Clearing only	0	0	0	0	0	0
	1	10	30	50	50	70
	4	310	350	280	410	360
	5	140	180	120	150	140
	6	100	130	110	100	140
	7	100	110	80	90	100
	8	80	70	80	90	
	11	70	80	70	60	
	12	10	10	0	0	
	13	50	50	70	70	
	14	40	50	50	70	
	15	50	60	50	60	



### A.22 Holding Offer: Daily net change (from the EU - excluding UK)

Net increase since previous weekday (2015 cycle up to 7 days after A level results day)



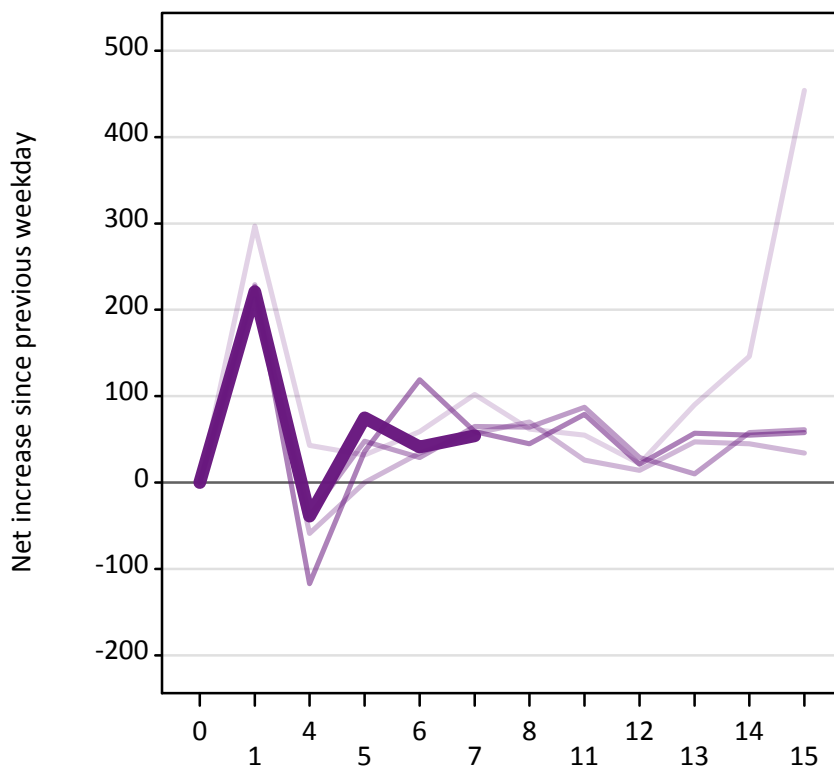
### A.23 Holding Offer: Daily net change (from the EU - excluding UK)

Net increase since previous weekday (2015 cycle up to 7 days after A level results day)

Applicant status, days since A level results day		2011	2012	2013	2014	2015
Holding Offer	0	0	0	0	0	0
	1	-1,020	-690	-750	-770	-840
	4	-830	-720	-660	-670	-740
	5	-500	-410	-390	-450	-530
	6	-480	-380	-350	-450	-430
	7	-450	-410	-360	-370	-370
	8	-330	-340	-320	-330	
	11	-330	-260	-290	-260	
	12	-60	-60	-50	-30	
	13	-320	-210	-170	-250	
	14	-370	-210	-250	-240	
	15	-670	-210	-210	-220	

### A.24 Free to be placed in Clearing: Daily net change (from the EU - excluding UK)

Net increase since previous weekday (2015 cycle up to 7 days after A level results day)



### A.25 Free to be placed in Clearing: Daily net change (from the EU - excluding UK)

Net increase since previous weekday (2015 cycle up to 7 days after A level results day)

Applicant status, days since A level results day		2011	2012	2013	2014	2015
Free to be placed in Clearing	0	0	0	0	0	0
	1	300	230	210	230	220
	4	40	-60	-40	-120	-40
	5	30	0	50	40	80
	6	60	30	30	120	40
	7	100	60	70	60	50
	8	60	70	60	50	
	11	60	30	90	80	
	12	20	10	30	20	
	13	90	50	10	60	
	14	150	50	60	60	
	15	450	30	60	60	