

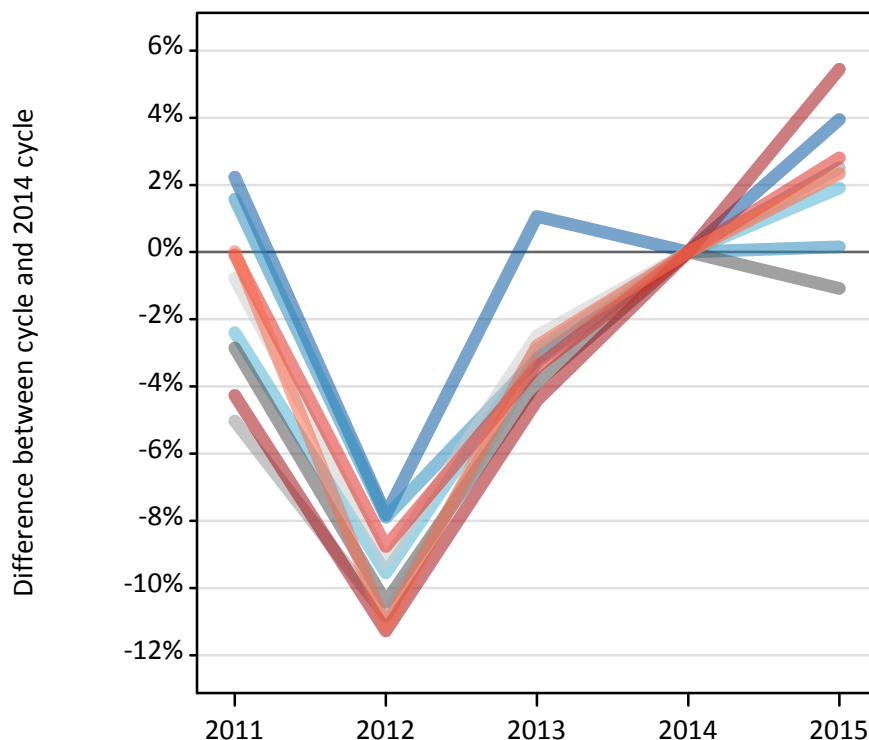
Daily Clearing Analysis: Region

Analysis at 00:05 on Friday 21 August 2015 (8 days after A level results day - No Scot.X1)

RX.1 Placed applicants by region of domicile: 8 days after A level results day

Placed applicants: change relative to 2014 cycle totals

- North East
- North West
- Yorkshire and The Humber
- East Midlands
- West Midlands
- East of England
- London
- South East
- South West



RX.2 Placed applicants by region of domicile: 8 days after A level results day

Applicant Status	Domicile	2011	2012	2013	2014	2015
Placed	North East	15,300	13,800	15,130	14,970	15,560
	North West	47,850	43,380	45,610	47,100	47,180
	Yorkshire and The Humber	31,440	29,140	31,280	32,210	32,830
	East Midlands	26,580	24,510	26,300	27,360	27,060
	West Midlands	35,300	33,140	35,950	37,170	38,100
	East of England	35,750	32,700	35,130	36,030	36,880
	London	61,180	56,700	61,080	63,900	67,380
	South East	56,040	51,170	54,170	56,080	57,660
	South West	32,110	28,530	31,220	32,110	32,860
	(England total)	341,540	313,050	335,850	346,930	355,510
	Scotland	26,940	26,910	27,450	28,340	29,290
	Northern Ireland	13,260	12,340	13,680	13,740	13,410
	Wales	16,870	17,520	17,700	18,440	18,780
	UK	398,600	369,820	394,680	407,450	416,990

RX.3 Placed applicants by region of domicile: 8 days after A level results day

Placed applicants: change relative to 2014 cycle totals

Applicant Status	Domicile	2011	2012	2013	2014	2015
Placed	North East	2%	-8%	1%	0%	4%
	North West	2%	-8%	-3%	0%	0%
	Yorkshire and The Humber	-2%	-10%	-3%	0%	2%
	East Midlands	-3%	-10%	-4%	0%	-1%
	West Midlands	-5%	-11%	-3%	0%	3%
	East of England	-1%	-9%	-2%	0%	2%
	London	-4%	-11%	-4%	0%	5%
	South East	-0%	-9%	-3%	0%	3%
	South West	0%	-11%	-3%	0%	2%
	(England total)	-2%	-10%	-3%	0%	2%
	Scotland	-5%	-5%	-3%	0%	3%
	Northern Ireland	-4%	-10%	-0%	0%	-2%
	Wales	-8%	-5%	-4%	0%	2%
	UK	-2%	-9%	-3%	0%	2%

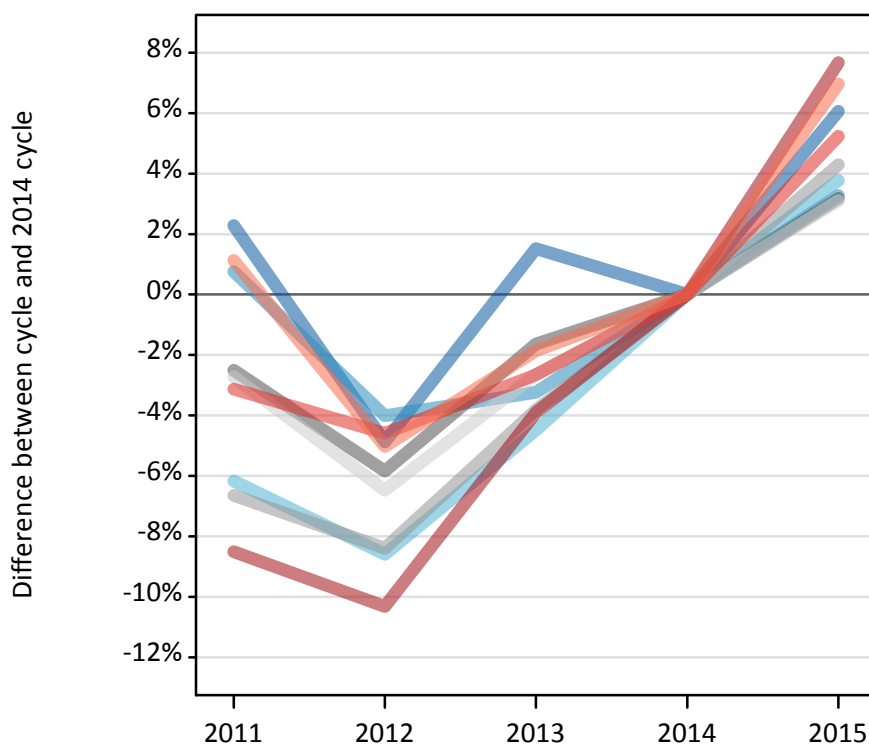
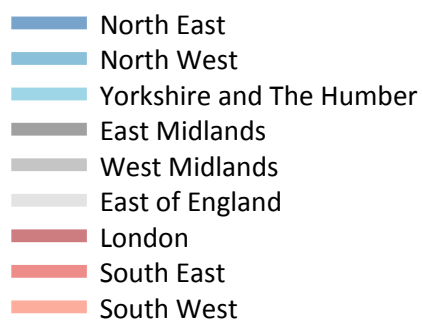
RX.4 Placed applicants by region of domicile: 8 days after A level results day

Placed applicants: absolute change relative to 2014 cycle totals

Applicant Status	Domicile	2011	2012	2013	2014	2015
Placed	North East	330	-1,170	160	0	590
	North West	740	-3,720	-1,500	0	70
	Yorkshire and The Humber	-770	-3,080	-930	0	620
	East Midlands	-780	-2,850	-1,060	0	-300
	West Midlands	-1,870	-4,030	-1,210	0	930
	East of England	-280	-3,330	-900	0	850
	London	-2,730	-7,210	-2,820	0	3,480
	South East	-50	-4,910	-1,920	0	1,570
	South West	10	-3,580	-890	0	750
	(England total)	-5,390	-33,880	-11,080	0	8,580
	Scotland	-1,410	-1,440	-890	0	950
	Northern Ireland	-480	-1,400	-60	0	-330
	Wales	-1,560	-920	-740	0	350
	UK	-8,840	-37,630	-12,770	0	9,550

RX.5 Placed 18 year old applicants by region of domicile: 8 days after A level results day

Placed 18 year old applicants: change relative to 2014 cycle totals



RX.6 Placed 18 year old applicants by region of domicile: 8 days after A level results day

Applicant Status	Domicile	2011	2012	2013	2014	2015
Placed	North East	8,060	7,500	8,000	7,880	8,360
	North West	26,250	25,010	25,210	26,050	26,900
	Yorkshire and The Humber	16,850	16,420	17,150	17,960	18,640
	East Midlands	14,630	14,130	14,760	15,000	15,480
	West Midlands	18,790	18,440	19,360	20,130	21,000
	East of England	20,760	19,960	20,780	21,350	22,010
	London	29,560	28,970	31,040	32,310	34,780
	South East	30,970	30,500	31,120	31,970	33,640
	South West	16,360	15,370	15,880	16,180	17,310
	(England total)	182,230	176,290	183,310	188,820	198,110
	Scotland	13,490	13,590	13,670	13,920	14,020
	Northern Ireland	8,440	7,980	8,530	8,330	8,230
	Wales	9,320	9,650	9,570	9,950	10,380
	UK	213,480	207,500	215,080	221,030	230,740

RX.7 Placed 18 year old applicants by region of domicile: 8 days after A level results day

Placed 18 year old applicants: change relative to 2014 cycle totals

Applicant Status	Domicile	2011	2012	2013	2014	2015
Placed	North East	2%	-5%	2%	0%	6%
	North West	1%	-4%	-3%	0%	3%
	Yorkshire and The Humber	-6%	-9%	-4%	0%	4%
	East Midlands	-3%	-6%	-2%	0%	3%
	West Midlands	-7%	-8%	-4%	0%	4%
	East of England	-3%	-6%	-3%	0%	3%
	London	-9%	-10%	-4%	0%	8%
	South East	-3%	-5%	-3%	0%	5%
	South West	1%	-5%	-2%	0%	7%
	(England total)	-3%	-7%	-3%	0%	5%
	Scotland	-3%	-2%	-2%	0%	1%
	Northern Ireland	1%	-4%	2%	0%	-1%
	Wales	-6%	-3%	-4%	0%	4%
	UK	-3%	-6%	-3%	0%	4%

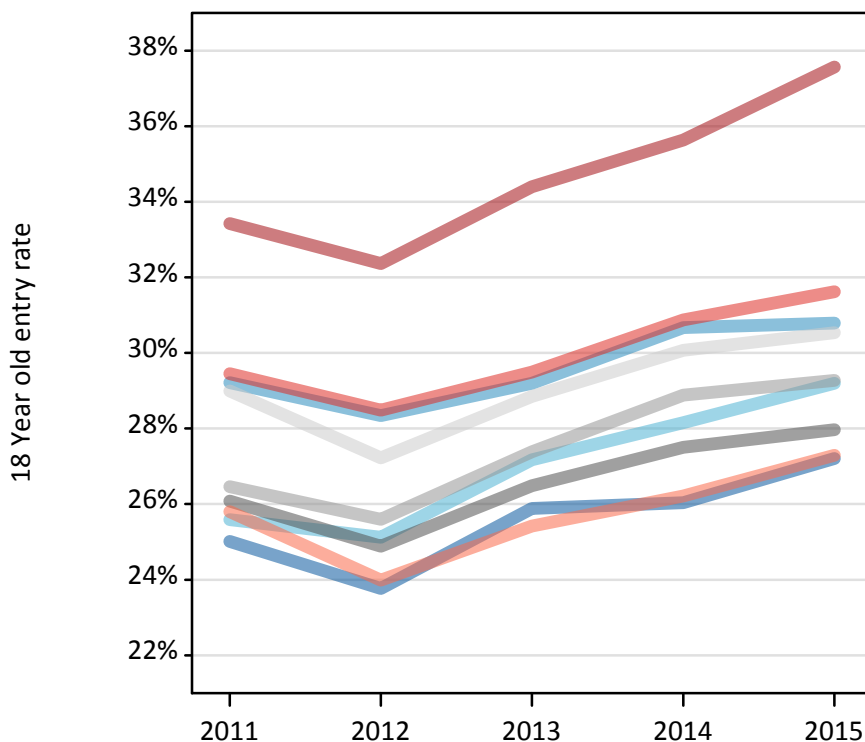
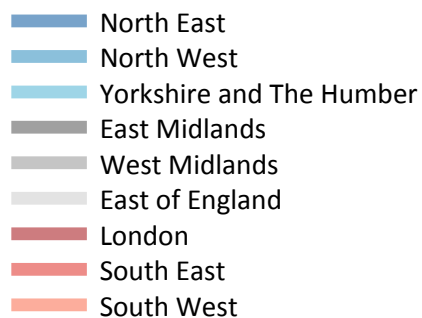
RX.8 Placed 18 year old applicants by region of domicile: 8 days after A level results day

Placed 18 year old applicants: absolute change relative to 2014 cycle totals

Applicant Status	Domicile	2011	2012	2013	2014	2015
Placed	North East	180	-380	120	0	480
	North West	200	-1,040	-840	0	850
	Yorkshire and The Humber	-1,110	-1,540	-810	0	680
	East Midlands	-380	-880	-250	0	480
	West Midlands	-1,340	-1,690	-770	0	870
	East of England	-580	-1,380	-560	0	660
	London	-2,750	-3,330	-1,260	0	2,480
	South East	-1,000	-1,470	-850	0	1,670
	South West	180	-810	-300	0	1,130
	(England total)	-6,590	-12,530	-5,510	0	9,290
	Scotland	-430	-340	-250	0	90
	Northern Ireland	110	-350	200	0	-100
	Wales	-630	-310	-380	0	430
	UK	-7,550	-13,530	-5,950	0	9,710

RX.9 Placed 18 year old applicants by region of domicile: 8 days after A level results day

Placed 18 year old applicants: entry rate



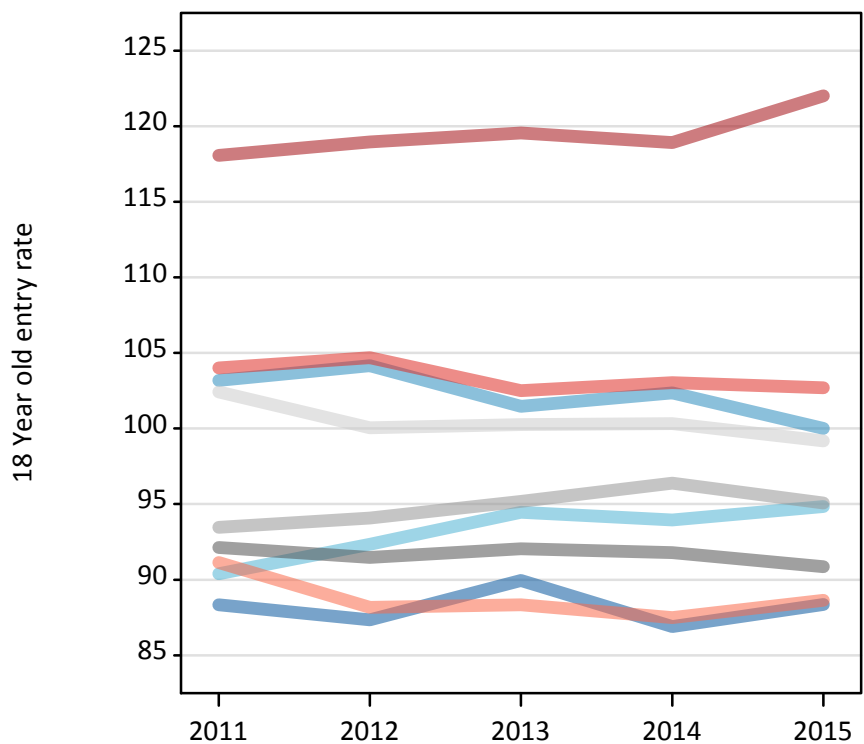
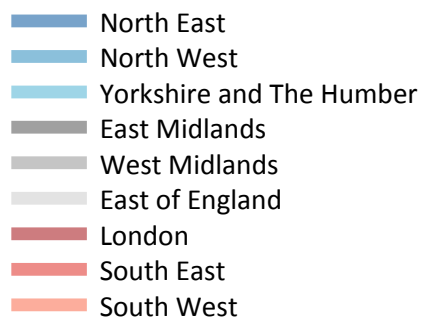
RX.10 Placed 18 year old applicants by region of domicile: 8 days after A level results day

Placed 18 year old applicants: entry rate

Applicant Status	Domicile	2011	2012	2013	2014	2015
Placed	North East	25.0%	23.8%	25.9%	26.0%	27.2%
	North West	29.2%	28.3%	29.2%	30.7%	30.8%
	Yorkshire and The Humber	25.6%	25.1%	27.2%	28.2%	29.2%
	East Midlands	26.1%	24.9%	26.5%	27.5%	28.0%
	West Midlands	26.5%	25.6%	27.4%	28.9%	29.3%
	East of England	29.0%	27.2%	28.8%	30.1%	30.5%
	London	33.4%	32.4%	34.4%	35.6%	37.6%
	South East	29.4%	28.5%	29.5%	30.9%	31.6%
	South West	25.8%	24.0%	25.4%	26.2%	27.3%
	(England total)	28.3%	27.2%	28.8%	30.0%	30.8%
	Scotland	21.5%	21.9%	22.2%	22.7%	23.3%
	Northern Ireland	33.7%	31.7%	34.8%	34.3%	33.1%
	Wales	24.2%	25.0%	25.3%	26.5%	27.6%
	UK	27.7%	26.8%	28.3%	29.3%	30.1%

RX.11 Placed 18 year old applicants by region of domicile: 8 days after A level results day

Placed 18 year old applicants: entry rates (indexed to 100 = England)



RX.12 Placed 18 year old applicants by region of domicile: 8 days after A level results day

Placed 18 year old applicants: entry rate (indexed to 100 = England)

Applicant Status	Domicile	2011	2012	2013	2014	2015
Placed	North East	88	87	90	87	88
	North West	103	104	101	102	100
	Yorkshire and The Humber	90	92	94	94	95
	East Midlands	92	91	92	92	91
	West Midlands	93	94	95	96	95
	East of England	102	100	100	100	99
	London	118	119	120	119	122
	South East	104	105	103	103	103
	South West	91	88	88	87	89
	(England total)	100	100	100	100	100