

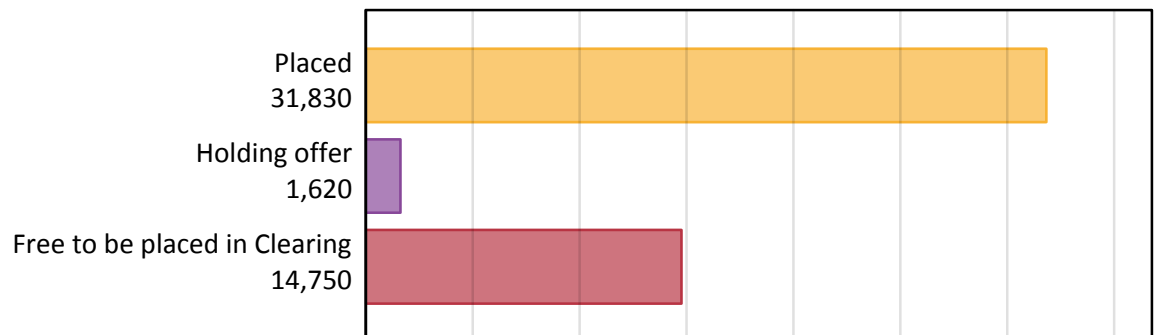
Daily Clearing Analysis: Overview

Analysis at 00:05 on Friday 21 August 2015 (8 days after A level results day)

A.1 Applicants by type and status from Scotland, 2015 cycle

Applicant type	Status	2015
Main scheme	Placed (Clearing)	1,060
	Placed (Adjustment)	10
	Placed (Firm)	28,550
	Placed (Insurance)	1,500
	Placed (Other)	540
	Holding offer	1,620
	Free to be placed in Clearing	14,750
Direct to Clearing	Placed (Direct to Clearing)	170
	Other (Direct to Clearing)	360
All applicants	Placed	31,830

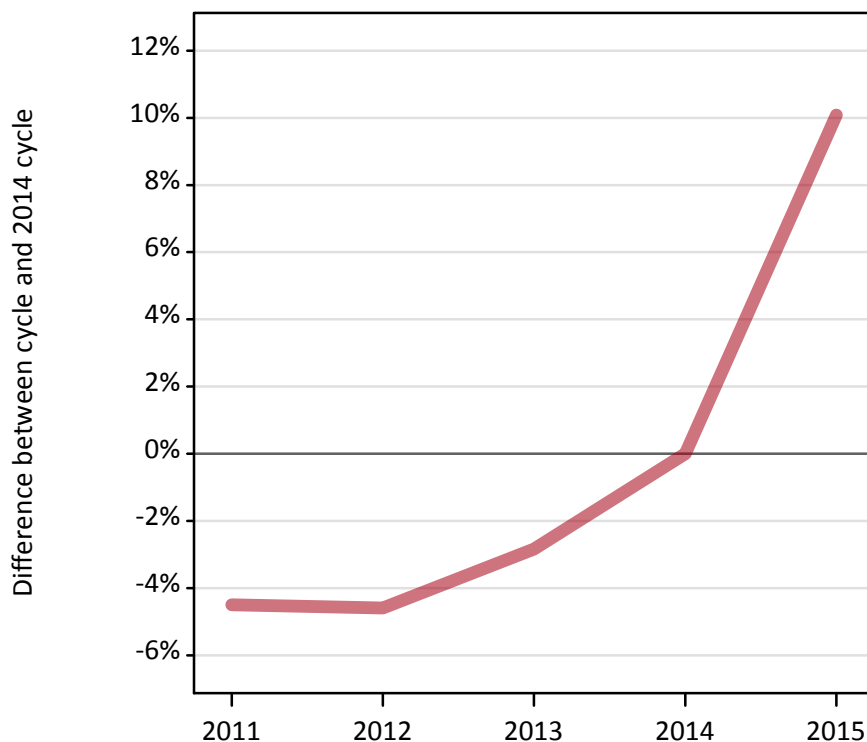
A.2 Summary of applicants who are placed, holding offers or free to be placed in Clearing (Scotland)



A.3 All placed applicants from Scotland: 8 days after A level results day

All placed applicants: difference between cycle and 2014 cycle

Placed



A.4 All placed applicants from Scotland: 8 days after A level results day

All placed applicants: applicants at 8 days after A level results day

Applicant type	Status	2011	2012	2013	2014	2015
All applicants	Placed	27,610	27,580	28,090	28,910	31,830

A.5 All placed applicants from Scotland: 8 days after A level results day

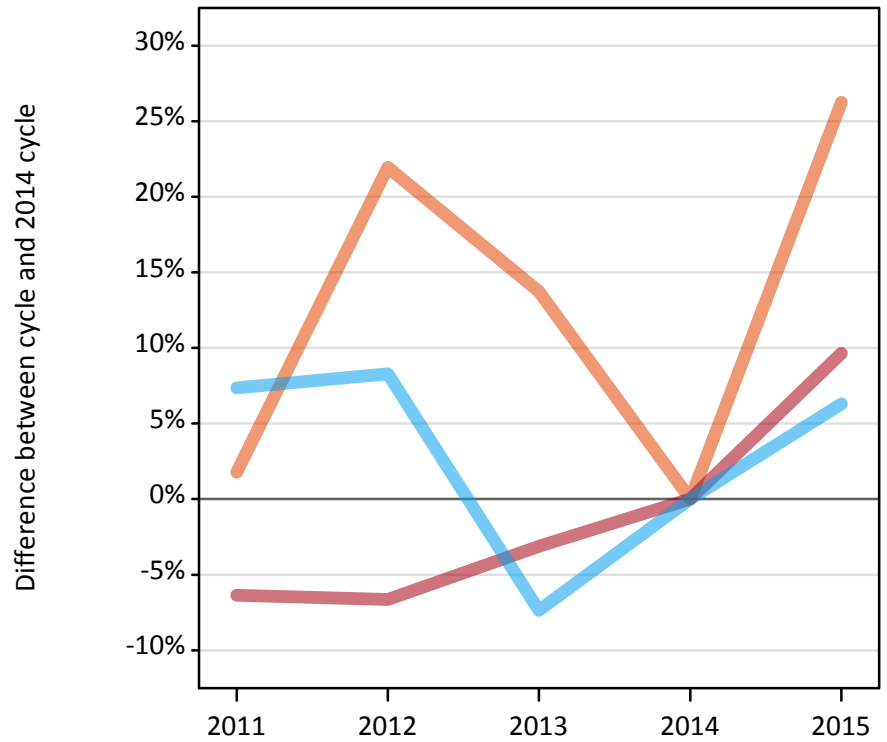
All placed applicants: difference between cycle and 2014 cycle

Applicant type	Status	2011	2012	2013	2014	2015
All applicants	Placed	-5%	-5%	-3%	0%	10%

A.6 Placed main scheme applicants from Scotland: 8 days after A level results day

Selected placed routes: difference between cycle and 2014 cycle

- Placed (Clearing)
- Placed (Firm)
- Placed (Insurance)



A.7 Placed main scheme applicants from Scotland: 8 days after A level results day

All Main scheme placed routes (excluding Adjustment): applicants at 8 days after A level results day

Applicant type	Status	2011	2012	2013	2014	2015
Main scheme	Placed (Clearing)	850	1,020	950	840	1,060
	Placed (Firm)	24,380	24,310	25,230	26,040	28,550
	Placed (Insurance)	1,520	1,530	1,310	1,410	1,500
	Placed (Other)	750	580	470	500	540

A.8 Placed main scheme applicants from Scotland: 8 days after A level results day

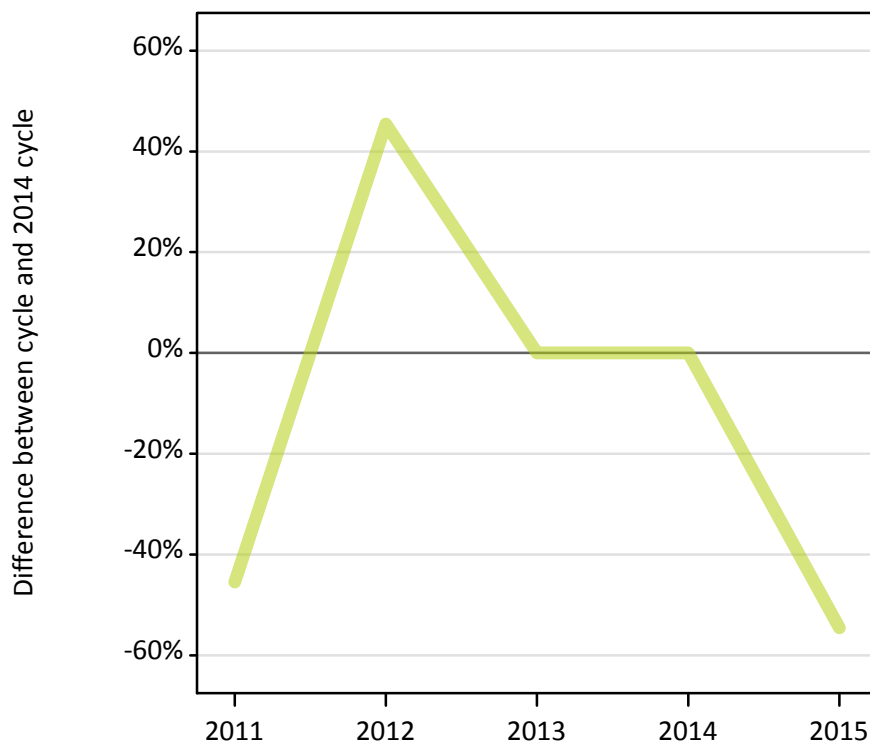
Selected placed routes: difference between cycle and 2014 cycle

Applicant type	Status	2011	2012	2013	2014	2015
Main scheme	Placed (Clearing)	2%	22%	14%	0%	26%
	Placed (Firm)	-6%	-7%	-3%	0%	10%
	Placed (Insurance)	7%	8%	-7%	0%	6%

A.9 Main scheme applicants placed through adjustment: 8 days after A level results day

Placed through adjustment: difference between cycle and 2014 cycle

Placed (Adjustment)



A.10 Main scheme applicants placed through adjustment: 8 days after A level results day

Placed through adjustment: applicants at 8 days after A level results day

Applicant type	Status	2011	2012	2013	2014	2015
Main scheme	Placed (Adjustment)	10	20	10	10	10

A.11 Main scheme applicants placed through adjustment: 8 days after A level results day

Placed through adjustment: difference between cycle and 2014 cycle

Applicant type	Status	2011	2012	2013	2014	2015
Main scheme	Placed (Adjustment)	-45%	45%	0%	0%	-55%

A.12 Main scheme applicants not currently placed from Scotland: 8 days after A level results day

Applicants in unplaced states: difference between cycle and 2014 cycle

— Holding offer
— Free to be placed in Clearing



A.13 Main scheme applicants not currently placed from Scotland: 8 days after A level results day

Applicants in unplaced states: applicants at 8 days after A level results day

Applicant type	Status	2011	2012	2013	2014	2015
Main scheme	Holding offer	1,700	1,910	2,040	1,890	1,620
	Free to be placed in Clearing	13,610	12,620	12,430	12,790	14,750

A.14 Main scheme applicants not currently placed from Scotland: 8 days after A level results day

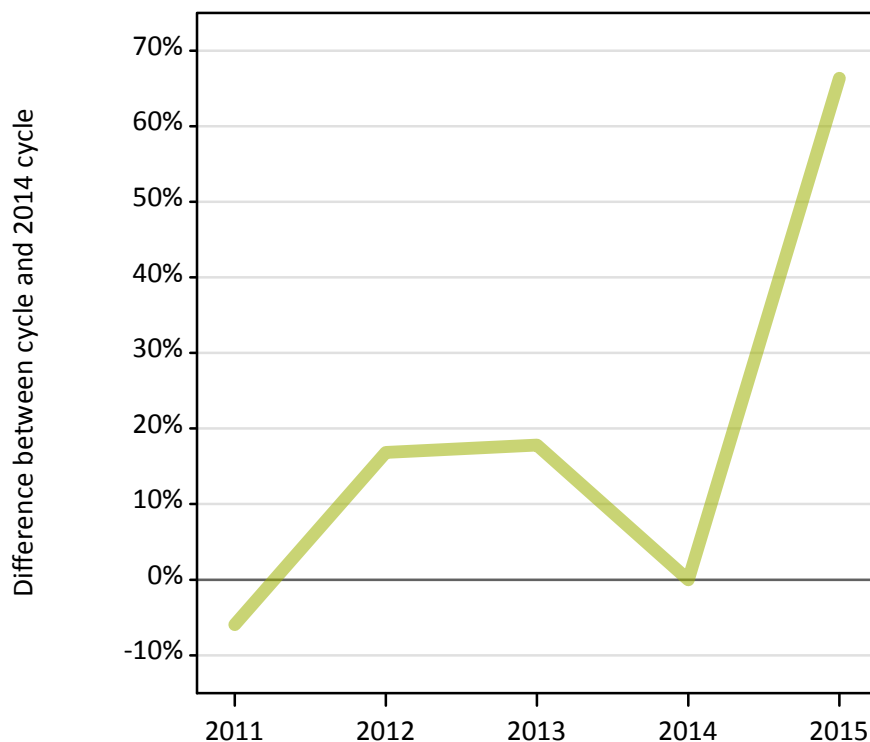
Applicants in unplaced states: difference between cycle and 2014 cycle

Applicant type	Status	2011	2012	2013	2014	2015
Main scheme	Holding offer	-10%	1%	8%	0%	-14%
	Free to be placed in Clearing	6%	-1%	-3%	0%	15%

A.15 Direct to Clearing applicants from Scotland: 8 days after A level results day

Placed (Direct to Clearing): difference between cycle and 2014 cycle

Placed (Direct to Clearing)



A.16 Direct to Clearing applicants from Scotland: 8 days after A level results day

Direct to Clearing 8 days after A level results day

Applicant type	Status	2011	2012	2013	2014	2015
Direct to Clearing	Placed (Direct to Clearing)	100	120	120	100	170
	Other (Direct to Clearing)	260	280	280	250	360

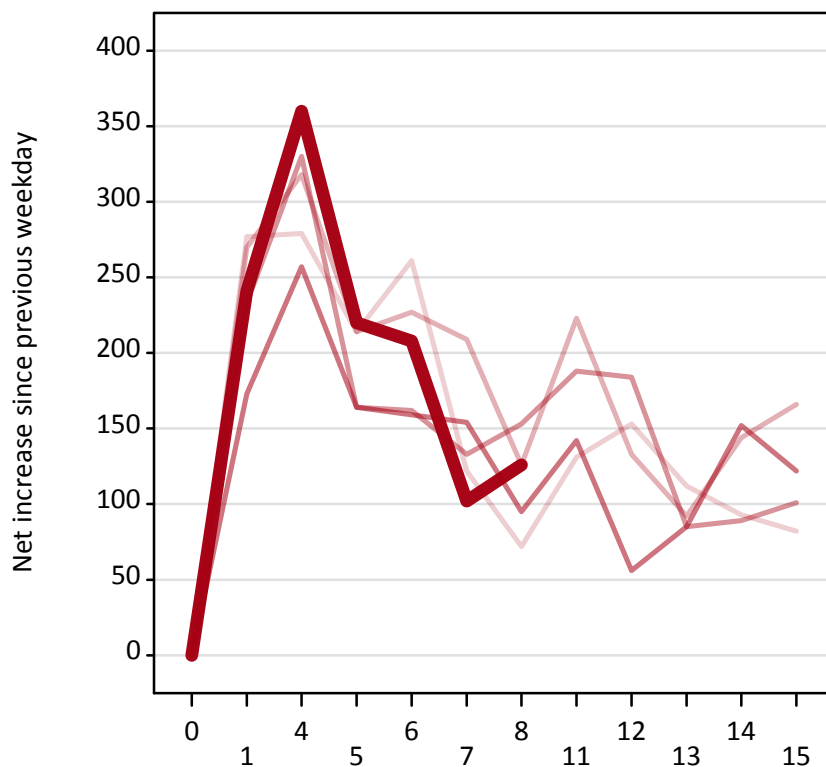
A.17 Direct to Clearing applicants from Scotland: 8 days after A level results day

Placed (Direct to Clearing): difference between cycle and 2014 cycle

Applicant type	Status	2011	2012	2013	2014	2015
Direct to Clearing	Placed (Direct to Clearing)	-6%	17%	18%	0%	66%

A.18 All Placed: Daily net change (from Scotland)

Net increase since previous weekday (2015 cycle up to 8 days after A level results day)



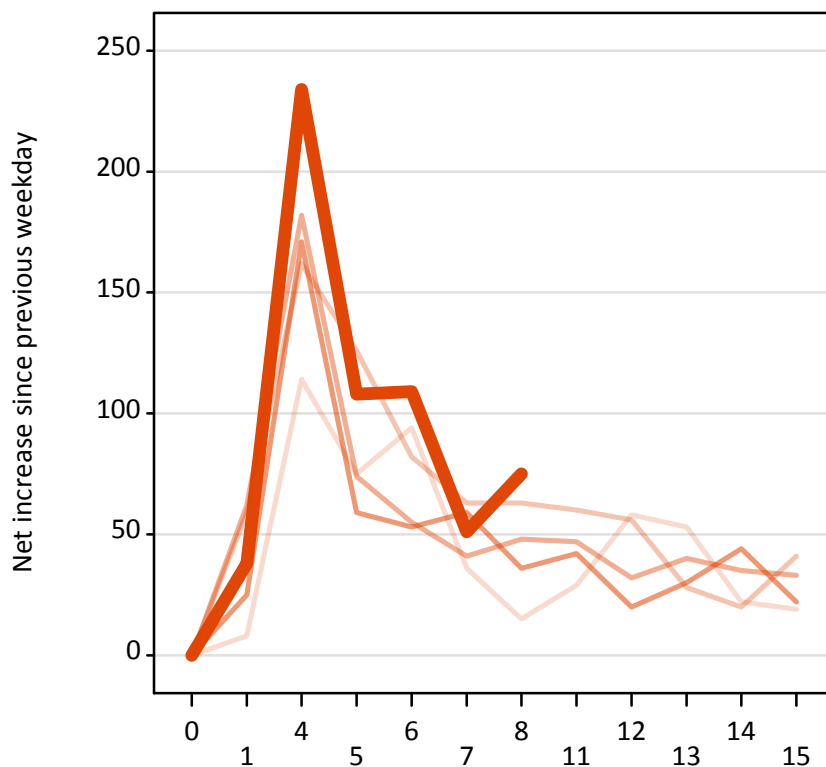
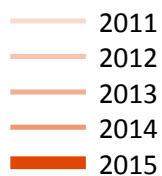
A.19 All Placed: Daily net change (from Scotland)

Net increase since previous weekday (2015 cycle up to 8 days after A level results day)

Applicant status, days since A level results day		2011	2012	2013	2014	2015
All Placed	0	0	0	0	0	0
	1	280	270	230	170	240
	4	280	320	330	260	360
	5	210	210	160	160	220
	6	260	230	160	160	210
	7	120	210	130	150	100
	8	70	130	150	100	130
	11	130	220	190	140	
	12	150	130	180	60	
	13	110	90	90	90	
	14	90	140	90	150	
	15	80	170	100	120	

A.20 Placed through Clearing only: Daily net change (from Scotland)

Net increase since previous weekday (2015 cycle up to 8 days after A level results day)



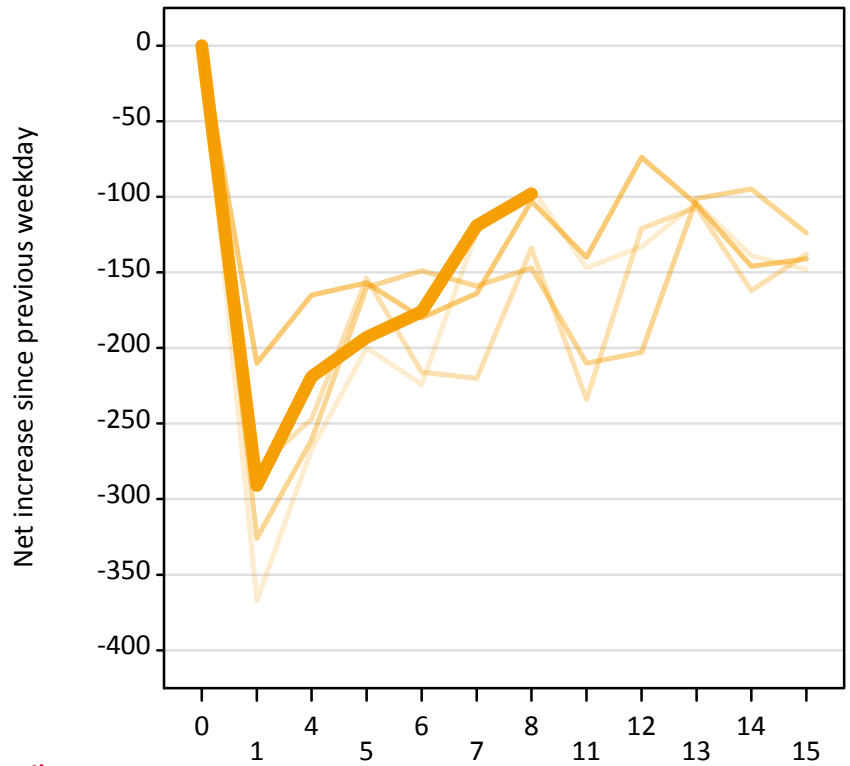
A.21 Placed through Clearing only: Daily net change (from Scotland)

Net increase since previous weekday (2015 cycle up to 8 days after A level results day)

Applicant status, days since A level results day		2011	2012	2013	2014	2015
Placed through Clearing only	0	0	0	0	0	0
	1	10	60	60	30	40
	4	110	160	180	170	230
	5	80	130	70	60	110
	6	90	80	60	50	110
	7	40	60	40	60	50
	8	20	60	50	40	80
	11	30	60	50	40	
	12	60	60	30	20	
	13	50	30	40	30	
	14	20	20	40	40	
	15	20	40	30	20	

A.22 Holding Offer: Daily net change (from Scotland)

Net increase since previous weekday (2015 cycle up to 8 days after A level results day)



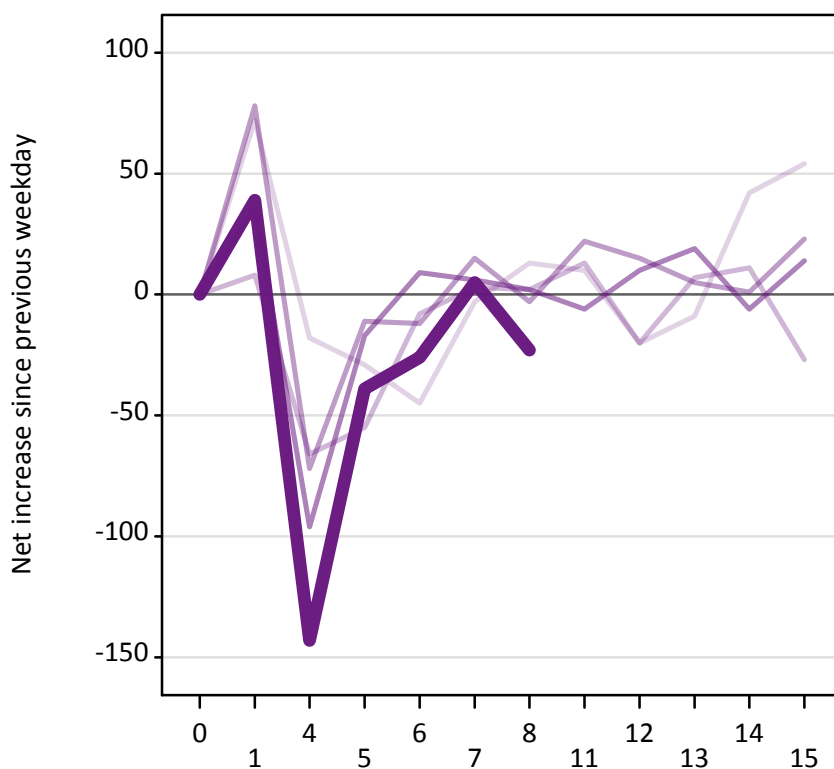
A.23 Holding Offer: Daily net change (from Scotland)

Net increase since previous weekday (2015 cycle up to 8 days after A level results day)

Applicant status, days since A level results day		2011	2012	2013	2014	2015
Holding Offer	0	0	0	0	0	0
	1	-370	-280	-330	-210	-290
	4	-270	-250	-260	-170	-220
	5	-200	-150	-160	-160	-190
	6	-220	-220	-150	-180	-180
	7	-120	-220	-160	-160	-120
	8	-90	-130	-150	-100	-100
	11	-150	-230	-210	-140	
	12	-130	-120	-200	-70	
	13	-100	-110	-100	-110	
	14	-140	-160	-100	-150	
	15	-150	-140	-120	-140	

A.24 Free to be placed in Clearing: Daily net change (from Scotland)

Net increase since previous weekday (2015 cycle up to 8 days after A level results day)



A.25 Free to be placed in Clearing: Daily net change (from Scotland)

Net increase since previous weekday (2015 cycle up to 8 days after A level results day)

Applicant status, days since A level results day		2011	2012	2013	2014	2015
Free to be placed in Clearing	0	0	0	0	0	0
	1	70	10	80	40	40
	4	-20	-70	-70	-100	-140
	5	-30	-60	-10	-20	-40
	6	-50	-10	-10	10	-30
	7	0	0	20	10	10
	8	10	0	0	0	-20
	11	10	10	20	-10	
	12	-20	-20	20	10	
	13	-10	10	10	20	
	14	40	10	0	-10	
	15	50	-30	20	10	