

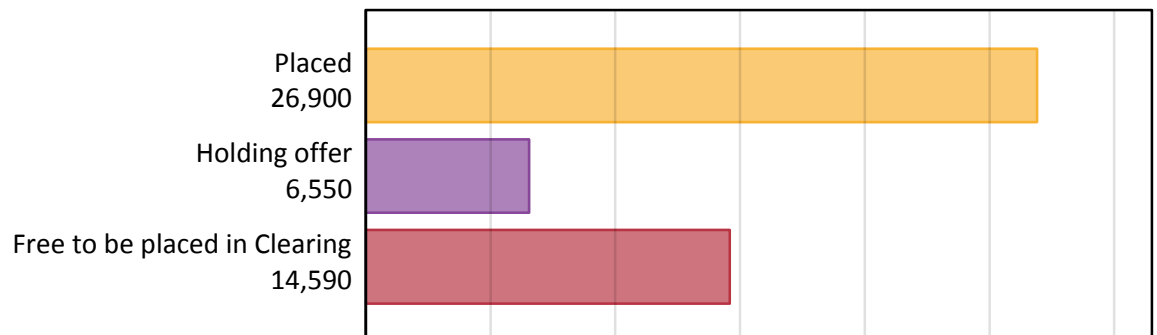
Daily Clearing Analysis: Overview

Analysis at 00:05 on Friday 21 August 2015 (8 days after A level results day)

A.1 Applicants by type and status from the EU - excluding UK, 2015 cycle

Applicant type	Status	2015
Main scheme	Placed (Clearing)	1,070
	Placed (Adjustment)	40
	Placed (Firm)	22,510
	Placed (Insurance)	1,990
	Placed (Other)	1,020
	Holding offer	6,550
	Free to be placed in Clearing	14,590
Direct to Clearing	Placed (Direct to Clearing)	270
	Other (Direct to Clearing)	370
All applicants	Placed	26,900

A.2 Summary of applicants who are placed, holding offers or free to be placed in Clearing (the EU - excluding UK)



A.3 All placed applicants from the EU - excluding UK: 8 days after A level results day

All placed applicants: difference between cycle and 2014 cycle

Placed



A.4 All placed applicants from the EU - excluding UK: 8 days after A level results day

All placed applicants: applicants at 8 days after A level results day

Applicant type	Status	2011	2012	2013	2014	2015
All applicants	Placed	24,520	21,230	22,450	24,340	26,900

A.5 All placed applicants from the EU - excluding UK: 8 days after A level results day

All placed applicants: difference between cycle and 2014 cycle

Applicant type	Status	2011	2012	2013	2014	2015
All applicants	Placed	1%	-13%	-8%	0%	10%

A.6 Placed main scheme applicants from the EU - excluding UK: 8 days after A level results day

Selected placed routes: difference between cycle and 2014 cycle

- Placed (Clearing)
- Placed (Firm)
- Placed (Insurance)



A.7 Placed main scheme applicants from the EU - excluding UK: 8 days after A level results day

All Main scheme placed routes (excluding Adjustment): applicants at 8 days after A level results day

Applicant type	Status	2011	2012	2013	2014	2015
Main scheme	Placed (Clearing)	760	890	820	970	1,070
	Placed (Firm)	20,550	17,740	18,730	20,350	22,510
	Placed (Insurance)	1,820	1,430	1,600	1,760	1,990
	Placed (Other)	1,210	900	1,020	1,000	1,020

A.8 Placed main scheme applicants from the EU - excluding UK: 8 days after A level results day

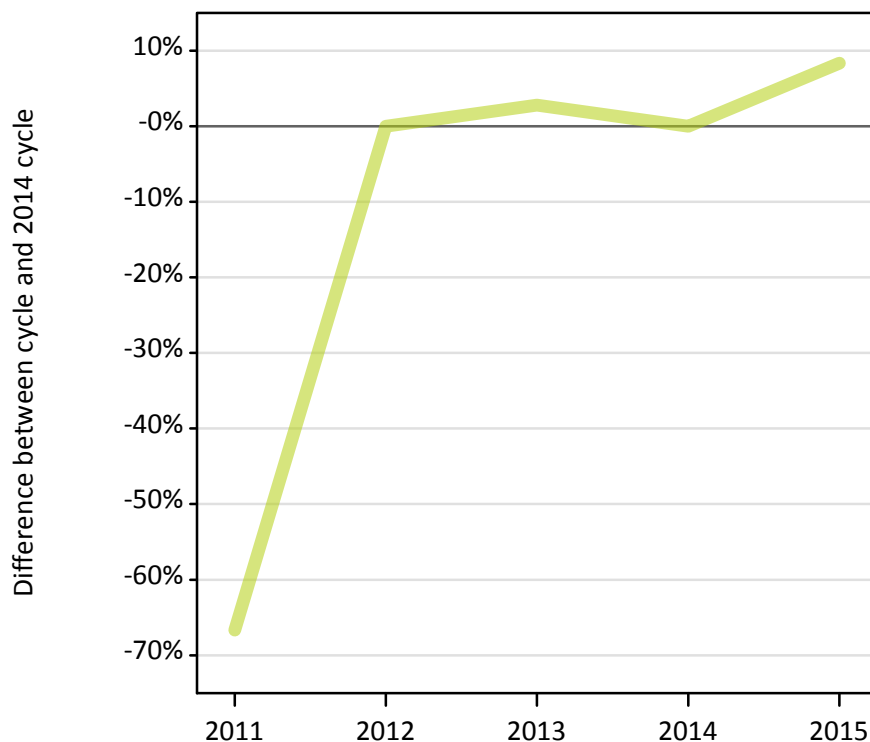
Selected placed routes: difference between cycle and 2014 cycle

Applicant type	Status	2011	2012	2013	2014	2015
Main scheme	Placed (Clearing)	-21%	-8%	-15%	0%	11%
	Placed (Firm)	1%	-13%	-8%	0%	11%
	Placed (Insurance)	3%	-19%	-9%	0%	13%

A.9 Main scheme applicants placed through adjustment: 8 days after A level results day

Placed through adjustment: difference between cycle and 2014 cycle

Placed (Adjustment)



A.10 Main scheme applicants placed through adjustment: 8 days after A level results day

Placed through adjustment: applicants at 8 days after A level results day

Applicant type	Status	2011	2012	2013	2014	2015
Main scheme	Placed (Adjustment)	10	40	40	40	40

A.11 Main scheme applicants placed through adjustment: 8 days after A level results day

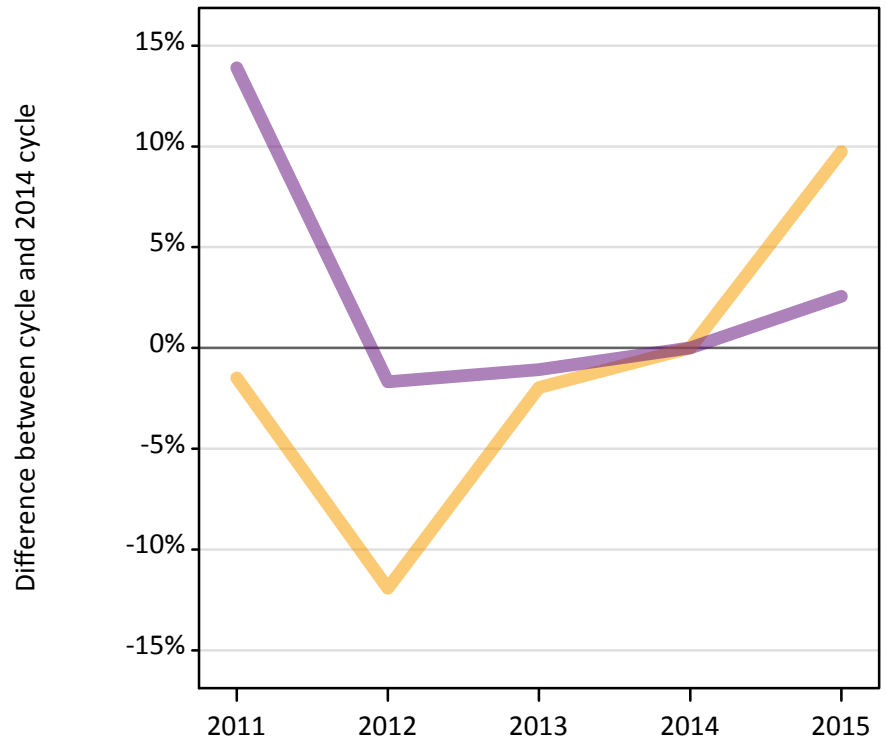
Placed through adjustment: difference between cycle and 2014 cycle

Applicant type	Status	2011	2012	2013	2014	2015
Main scheme	Placed (Adjustment)	-67%	0%	3%	0%	8%

A.12 Main scheme applicants not currently placed from the EU - excluding UK: 8 days after A level results day

Applicants in unplaced states: difference between cycle and 2014 cycle

— Holding offer
— Free to be placed in Clearing



A.13 Main scheme applicants not currently placed from the EU - excluding UK: 8 days after A level results day

Applicants in unplaced states: applicants at 8 days after A level results day

Applicant type	Status	2011	2012	2013	2014	2015
Main scheme	Holding offer	5,880	5,260	5,850	5,970	6,550
	Free to be placed in Clearing	16,200	13,980	14,070	14,220	14,590

A.14 Main scheme applicants not currently placed from the EU - excluding UK: 8 days after A level results day

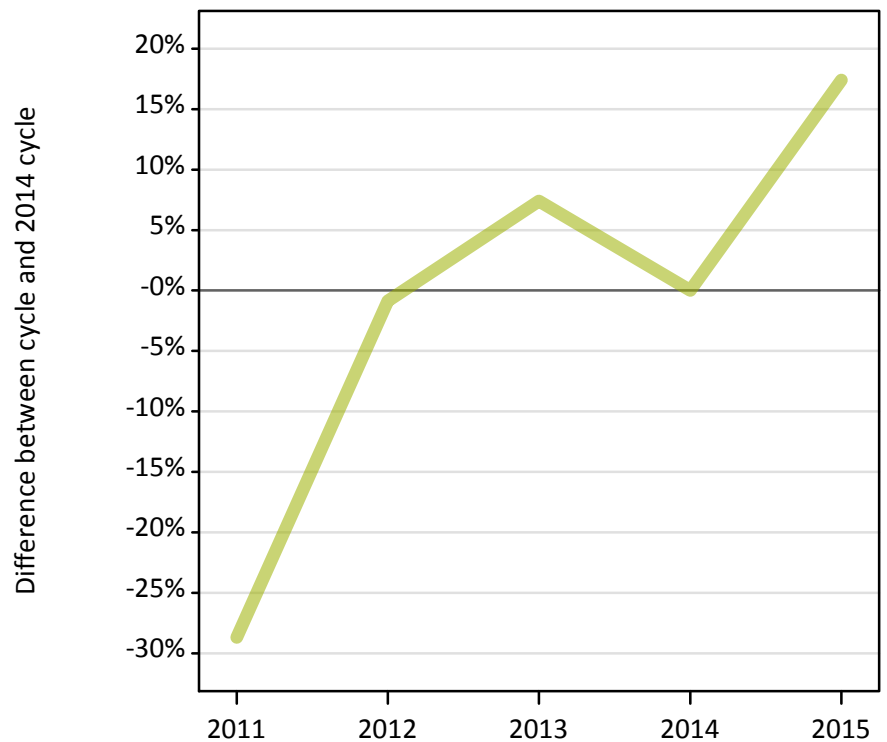
Applicants in unplaced states: difference between cycle and 2014 cycle

Applicant type	Status	2011	2012	2013	2014	2015
Main scheme	Holding offer	-1%	-12%	-2%	0%	10%
	Free to be placed in Clearing	14%	-2%	-1%	0%	3%

A.15 Direct to Clearing applicants from the EU - excluding UK: 8 days after A level results day

Placed (Direct to Clearing): difference between cycle and 2014 cycle

Placed (Direct to Clearing)



A.16 Direct to Clearing applicants from the EU - excluding UK: 8 days after A level results day

Direct to Clearing 8 days after A level results day

Applicant type	Status	2011	2012	2013	2014	2015
Direct to Clearing	Placed (Direct to Clearing)	160	230	250	230	270
	Other (Direct to Clearing)	510	370	360	360	370

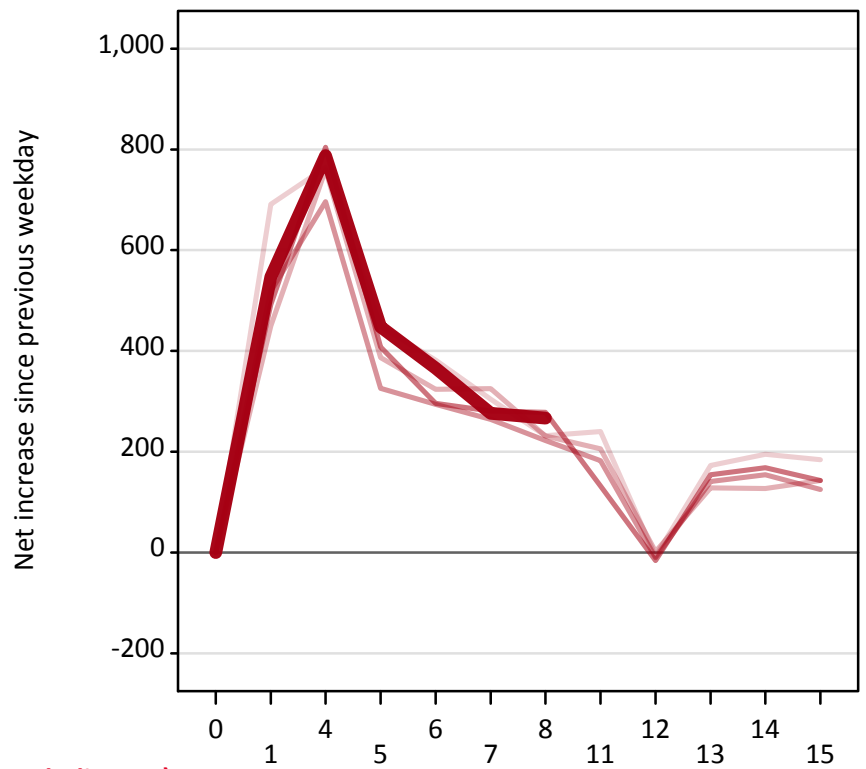
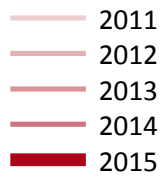
A.17 Direct to Clearing applicants from the EU - excluding UK: 8 days after A level results day

Placed (Direct to Clearing): difference between cycle and 2014 cycle

Applicant type	Status	2011	2012	2013	2014	2015
Direct to Clearing	Placed (Direct to Clearing)	-29%	-1%	7%	0%	17%

A.18 All Placed: Daily net change (from the EU - excluding UK)

Net increase since previous weekday (2015 cycle up to 8 days after A level results day)



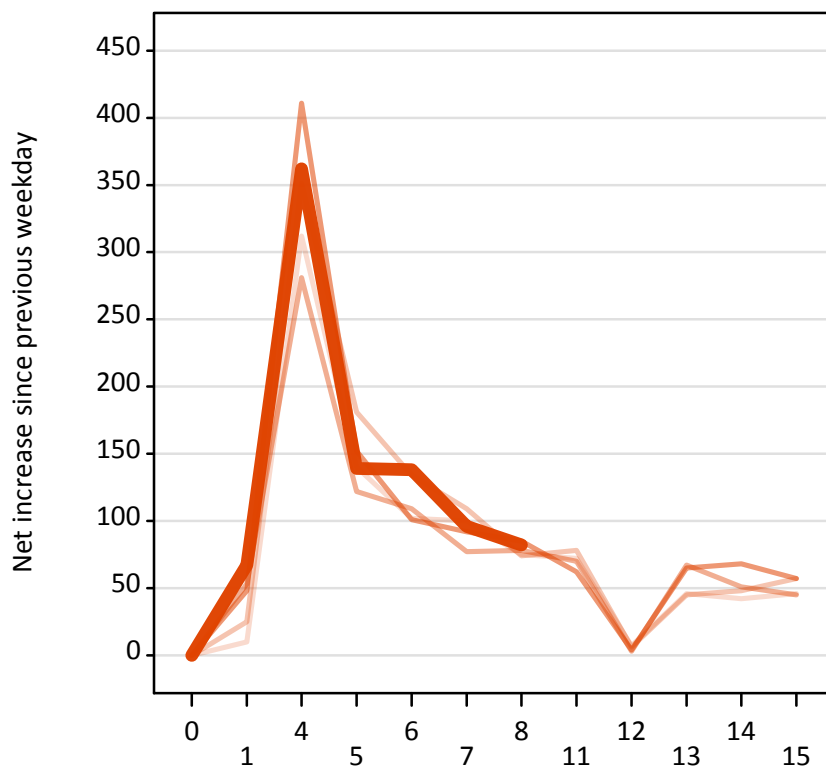
A.19 All Placed: Daily net change (from the EU - excluding UK)

Net increase since previous weekday (2015 cycle up to 8 days after A level results day)

Applicant status, days since A level results day		2011	2012	2013	2014	2015
All Placed	0	0	0	0	0	0
	1	690	450	520	490	550
	4	760	760	700	800	790
	5	450	390	330	410	450
	6	380	320	290	300	370
	7	300	330	260	280	280
	8	230	230	220	280	270
	11	240	210	180	130	
	12	-10	0	-10	-20	
	13	170	130	140	150	
	14	200	130	150	170	
	15	180	140	130	140	

A.20 Placed through Clearing only: Daily net change (from the EU - excluding UK)

Net increase since previous weekday (2015 cycle up to 8 days after A level results day)



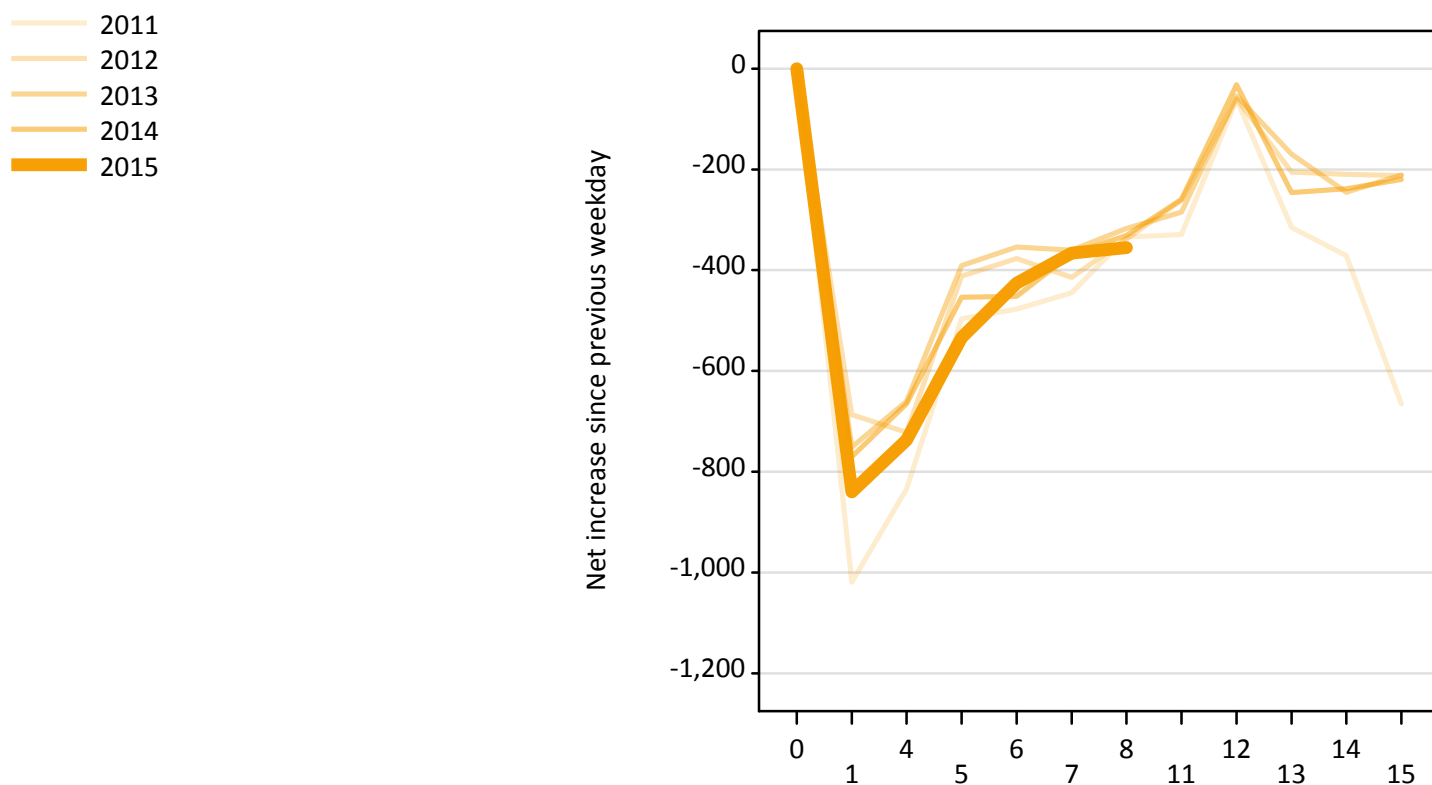
A.21 Placed through Clearing only: Daily net change (from the EU - excluding UK)

Net increase since previous weekday (2015 cycle up to 8 days after A level results day)

Applicant status, days since A level results day		2011	2012	2013	2014	2015
Placed through Clearing only	0	0	0	0	0	0
	1	10	30	50	50	70
	4	310	350	280	410	360
	5	140	180	120	150	140
	6	100	130	110	100	140
	7	100	110	80	90	100
	8	80	70	80	90	80
	11	70	80	70	60	
	12	10	10	0	0	
	13	50	50	70	70	
	14	40	50	50	70	
	15	50	60	50	60	

A.22 Holding Offer: Daily net change (from the EU - excluding UK)

Net increase since previous weekday (2015 cycle up to 8 days after A level results day)



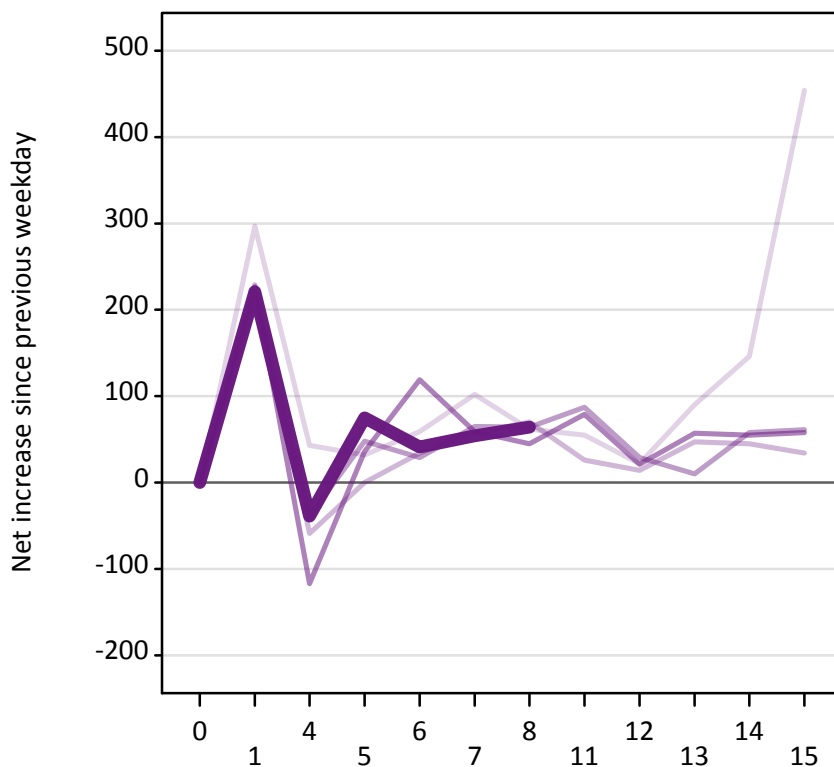
A.23 Holding Offer: Daily net change (from the EU - excluding UK)

Net increase since previous weekday (2015 cycle up to 8 days after A level results day)

Applicant status, days since A level results day		2011	2012	2013	2014	2015
Holding Offer	0	0	0	0	0	0
	1	-1,020	-690	-750	-770	-840
	4	-830	-720	-660	-670	-740
	5	-500	-410	-390	-450	-530
	6	-480	-380	-350	-450	-430
	7	-450	-410	-360	-370	-370
	8	-330	-340	-320	-330	-360
	11	-330	-260	-290	-260	
	12	-60	-60	-50	-30	
	13	-320	-210	-170	-250	
	14	-370	-210	-250	-240	
	15	-670	-210	-210	-220	

A.24 Free to be placed in Clearing: Daily net change (from the EU - excluding UK)

Net increase since previous weekday (2015 cycle up to 8 days after A level results day)



A.25 Free to be placed in Clearing: Daily net change (from the EU - excluding UK)

Net increase since previous weekday (2015 cycle up to 8 days after A level results day)

Applicant status, days since A level results day		2011	2012	2013	2014	2015
Free to be placed in Clearing	0	0	0	0	0	0
	1	300	230	210	230	220
	4	40	-60	-40	-120	-40
	5	30	0	50	40	80
	6	60	30	30	120	40
	7	100	60	70	60	50
	8	60	70	60	50	60
	11	60	30	90	80	
	12	20	10	30	20	
	13	90	50	10	60	
	14	150	50	60	60	
	15	450	30	60	60	